

INDEX OF SHEETS

SHEET NO. 1	TITLE
SHEET NO. 2	TYPICAL CROSS SECTIONS
SHEET NO. 2	ESTIMATE OF QUANTITIES
SHEET NO. 2	MISCELLANEOUS QUANTITIES
SHEET NO. —	RIGHT OF WAY PLAT
SHEET NO. 3-6	PLAN AND PROFILE STA. 20+00 TO STA. 123+35
SHEET NO. —	STANDARD DETAILS
SHEET NO. —	DRAINAGE STRUCTURES
SHEET NO. —	CROSS SECTIONS



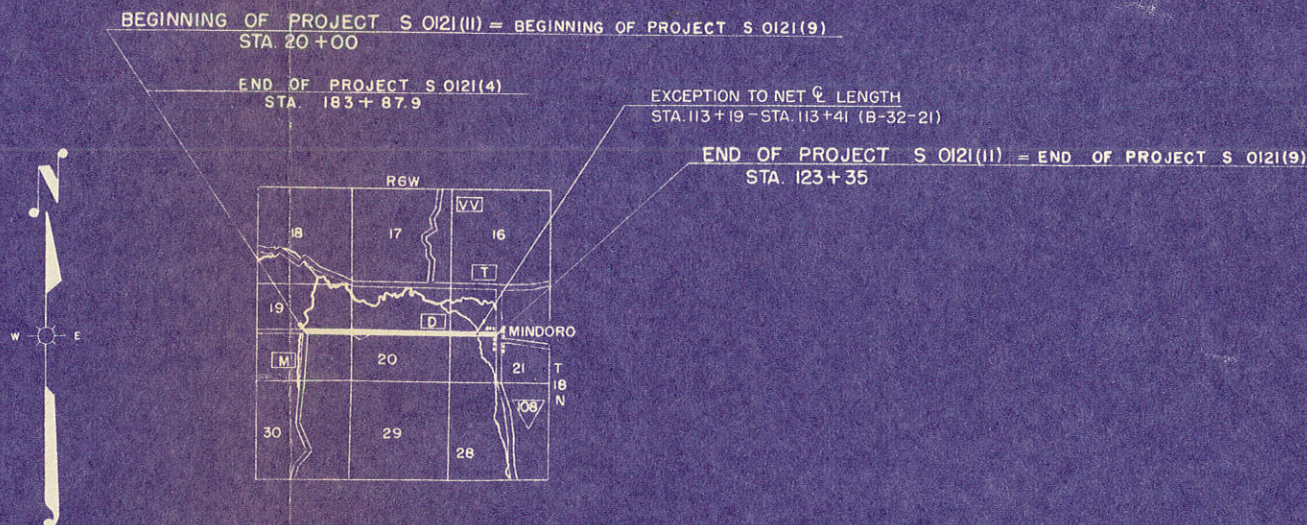
STATE OF WISCONSIN
STATE HIGHWAY COMMISSION OF WISCONSIN

COUNTY AND HIGHWAY	ROUTE AND SECTION	CLASS AND AGREEMENT		FEDERAL DIVISION OFFICE	SHEET NUMBER	TOTAL SHEETS
32.6	121.0	STATE	FEDERAL	WIS. 5N	1	6

PLAN AND PROFILE OF PROPOSED
C.T.H. "M" - MINDORO ROAD
LA CROSSE COUNTY
PROJECT S 0121(II)
C.T.H. "D"

BEGINNING AT A POINT NEAR THE CENTER OF SEC. 19,
T18N - R6W AND EXTENDING EASTERLY TO A POINT APPROX.
10' WEST OF CENTER OF SEC. 21 T18N, R6W

PLAN 1 IN. = 100 FT.
PROFILE HOR. 1 IN. = 100 FT. VERT. 1 IN. = 10 FT.
CROSS SECTIONS HOR. 1 IN. = 5 FT. VERT. 1 IN. = 5 FT.
1 IN. = 10 FT. 1 IN. = 10 FT.
1 IN. = 5 FT. 1 IN. = 2 FT.



LAYOUT
SCALE 1 MILE
TOTAL NET LENGTH OF CENTERLINE = 1.953 MI.

CONVENTIONAL SIGNS

STATE LINE.....	CULVERTS IN PLACE.....
COUNTY LINE.....	CULVERTS REQUIRED.....
TOWNSHIP OR RANGE LINE.....	DROP INLET.....
SECTION LINE.....	POWER POLE.....
NEW RIGHT OF WAY LINE.....	TELEPHONE OR TELEGRAPH POLE.....
PRESENT RIGHT OF WAY LINE.....	RIGHT OF WAY MARKERS.....
WIRE FENCE { WOVEN.....	REFERENCE STAKE FOR HUBS ONLY.....
{ BARBED.....	MARSH.....
LOT LINE.....	HEDGE.....
CORPORATE OR CITY LIMITS.....	TREES.....
PROPERTY LINE.....	GROUND ELEVATION..... DATUM LINE 73.9
TRAVELED WAY OR P.E.....	GRADE ELEVATION..... DATUM LINE 73.9
RAILROADS.....	
BASE OR SURVEY LINE.....	

APPROVED FOR LA CROSSE COUNTY BY:
4-23-59
DATE
[Signature]
COMMISSIONER

STATE HIGHWAY COMMISSION OF WISCONSIN MADISON, WIS.	DEPARTMENT OF COMMERCE BUREAU OF PUBLIC ROADS
SURVEYOR... D.E.K. NOTE BOOK 9039-LL DIVISION COMPUTER J.W.J. M.O. CHECKER DIVISION CHECKER R.C.J. CORRECT	RECOMMENDED FOR APPROVAL:
CORRECT: DATE 4-15-59 ACTING DISTRICT ENGINEER	DISTRICT ENGINEER DATE
RECOMMENDED FOR APPROVAL: DATE 4-22-59 ENGINEER OF DESIGN	APPROVED:
APPROVED: DATE 4/23/59 STATE HIGHWAY ENGINEER	DIVISION ENGINEER DATE

S 0121(II)

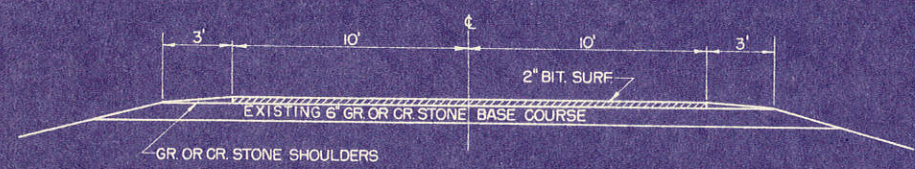
ESTIMATE OF QUANTITIES

CONTRACT NO. 182

THIS PROJECT IS TO BE EXECUTED UNDER THE STANDARD SPECIFICATIONS FOR ROAD AND BRIDGE CONSTRUCTION OF THE STATE HIGHWAY COMMISSION OF WISCONSIN — EDITION OF 1957, APPROVED AUGUST 9, 1957, AND SPECIAL PROVISIONS AS ATTACHED TO PROPOSALS

PROJECT	SHEET NUMBER	TOTAL SHEETS
S 0121(11)	2	6

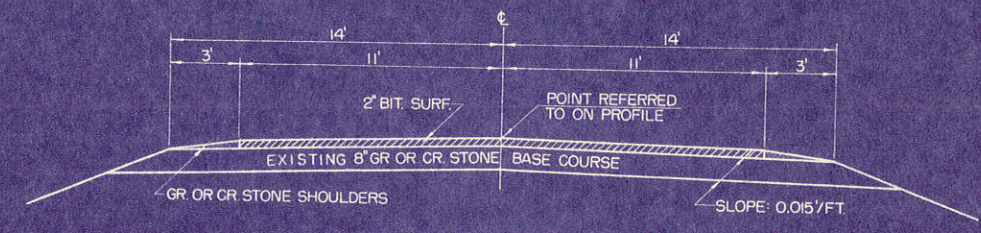
CONTRACT	STATION TO STATION	NET LENGTH OF CENTER LINE	CLEARING	GRUBBING	EXCAVATION			SAND GRAVEL FILL	FINISHING ROADWAY	OBLITERATING OLD ROAD	GRAVEL OR CRUSHED STONE		CULVERT PIPE					GUARD FENCE		MARKER POSTS FOR R/W	PREP OF ROADBED FOR BIT SURF	BIT ROAD MIX SURF	AGG FOR B.R.M. SURF	BIT MAT FOR SURF COURSE	TOPSOIL		FER-TILIZER	SEEDING	
					210-1	210-2	210-3				2203-1	23	2512-1	2523	2523-3	2523-4	2528-1	2528-2	2531-1						2532-1				
UNIT	LIN. FT.				C.Y.	C.Y.	C.Y.	C.Y.	STA.	STA.	C.Y.	C.Y.	LIN. FT.	LIN. FT.	LIN. FT.	LIN. FT.	LIN. FT.	C.Y.	LIN. FT.	EACH	EACH	STA.	S.Y.	C.Y.	GAL.	SQ. YD.	SQ. YD.	CWT.	SQ. YD.
2	20+00 - 123+35	10,313.0									340											105	28,800		41,600				
1	20+00 - 123+35										340																		



TYPICAL SIDE ROAD SECTION

MISCELLANEOUS QUANTITIES

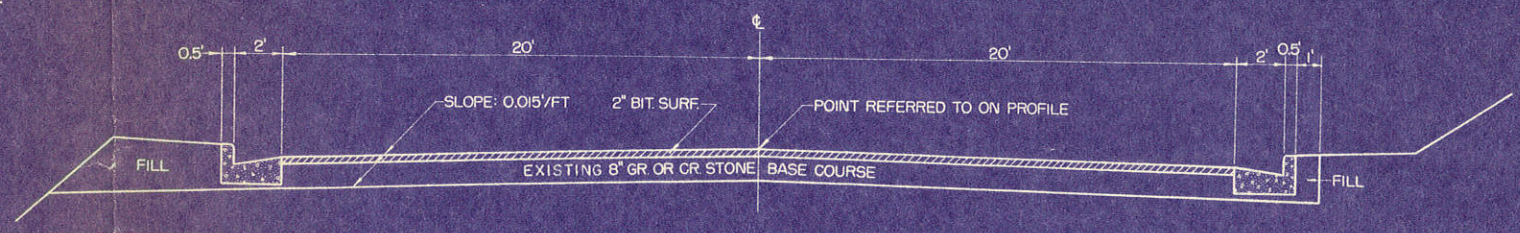
STA. - STA.	LOC.	PREP OF ROADBED FOR B.R.M. SURF	BIT MAT FOR SURF COURSE	BIT ROAD MIX SURF	AGG FOR B.R.M. SURF	GR OR CR STONE BASE COURSE (SHLDRS)
		STA.	GAL.	S.Y.	C.Y.	C.Y.
18+42.3 - 20+00	APPROACH	1.6	500	360	25	6
20+00 - 112+80	CL	92.8	32,800	22,680	1638	332
112+80 - 123+35	CL	10.6	6780	4700	340	-
69+16 - 72+20 (PARKING AREA AT CEM.)	RT.	-	1180	820	60	-
20+00	S.R. RT.	-	340	240	17	2



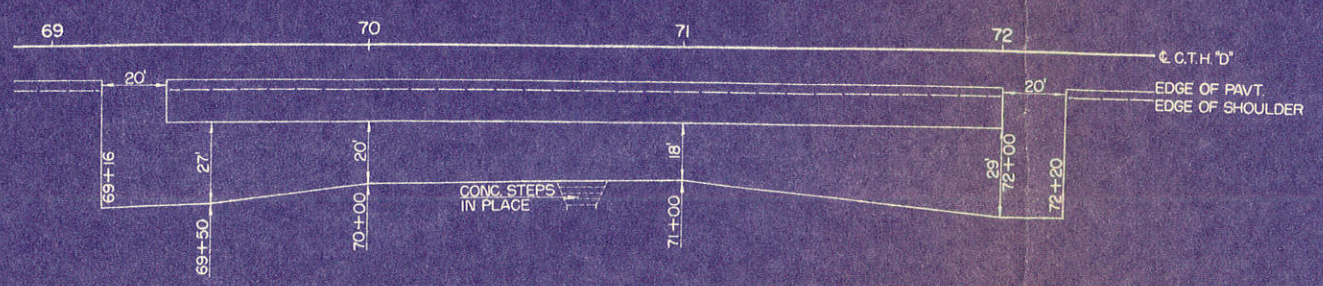
TYPICAL SECTION
STA. 20+00 - STA. 112+80

NOTE: SHEETS 3 TO 6 INCLUDED TO SHOW PROFILE & ALIGNMENT ONLY. OTHER INFORMATION IS NOT PERTINENT TO THIS CONTRACT.

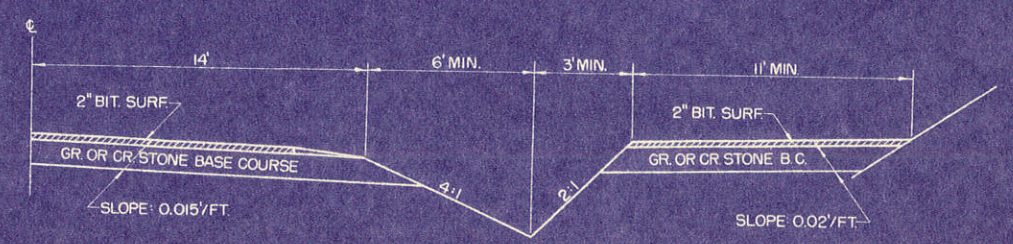
NOTE: BASE COURSE, OTHER THAN THAT ITEMIZED IN MISC. QUAN., IN PLACE.



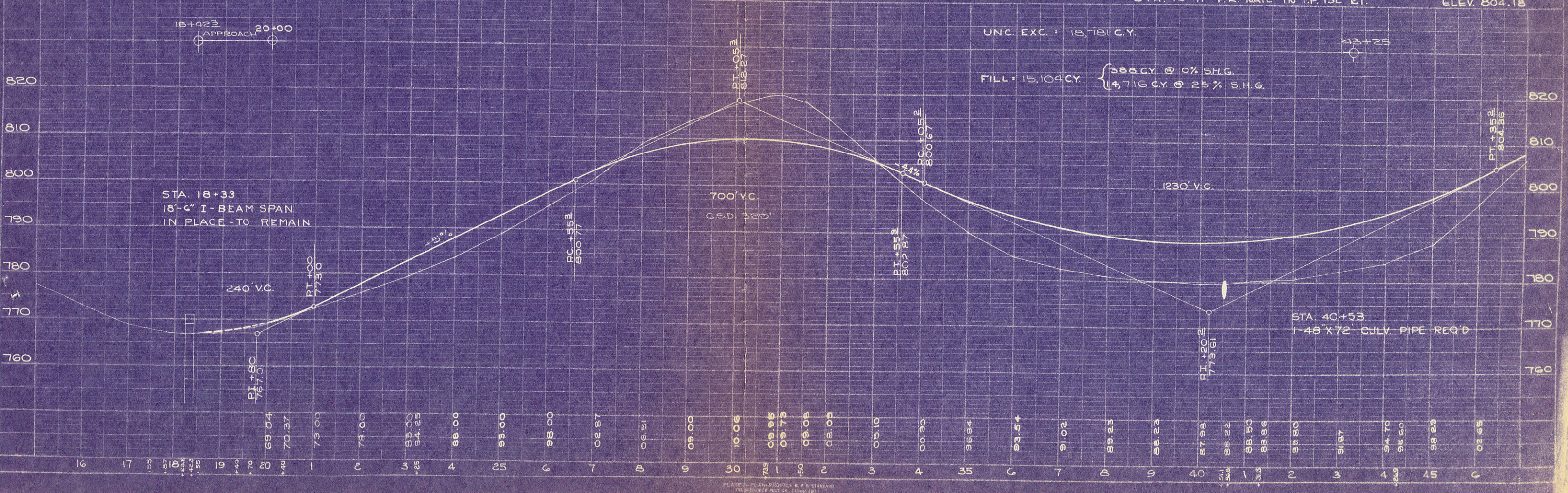
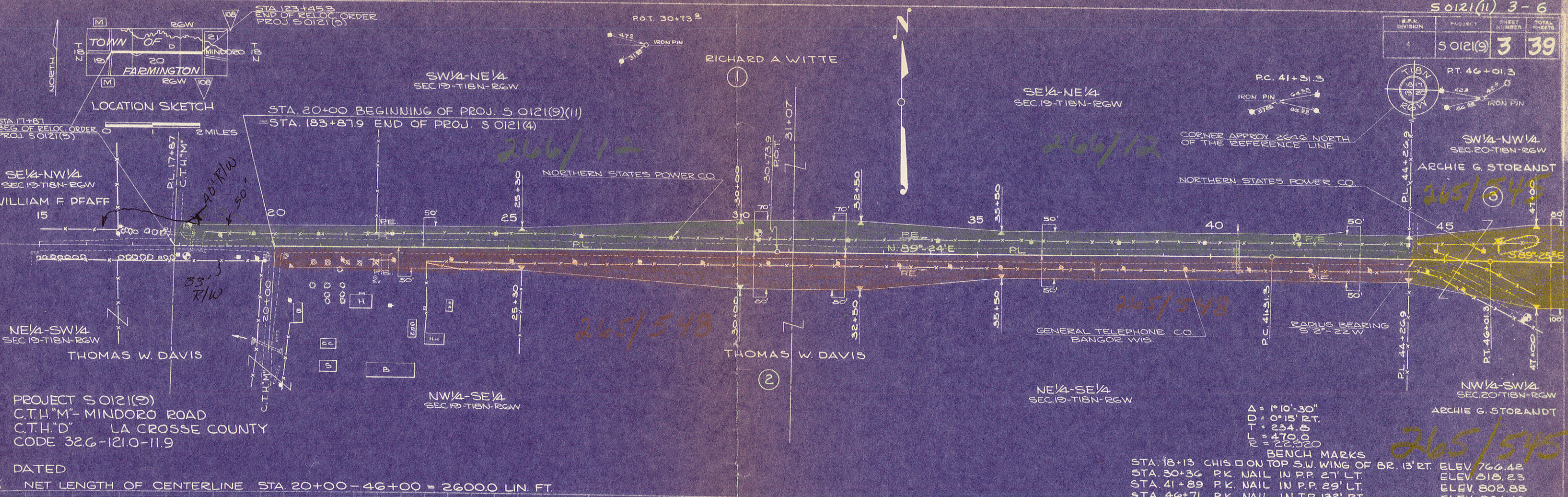
TYPICAL SECTION
STA. 112+80 - STA. 123+35



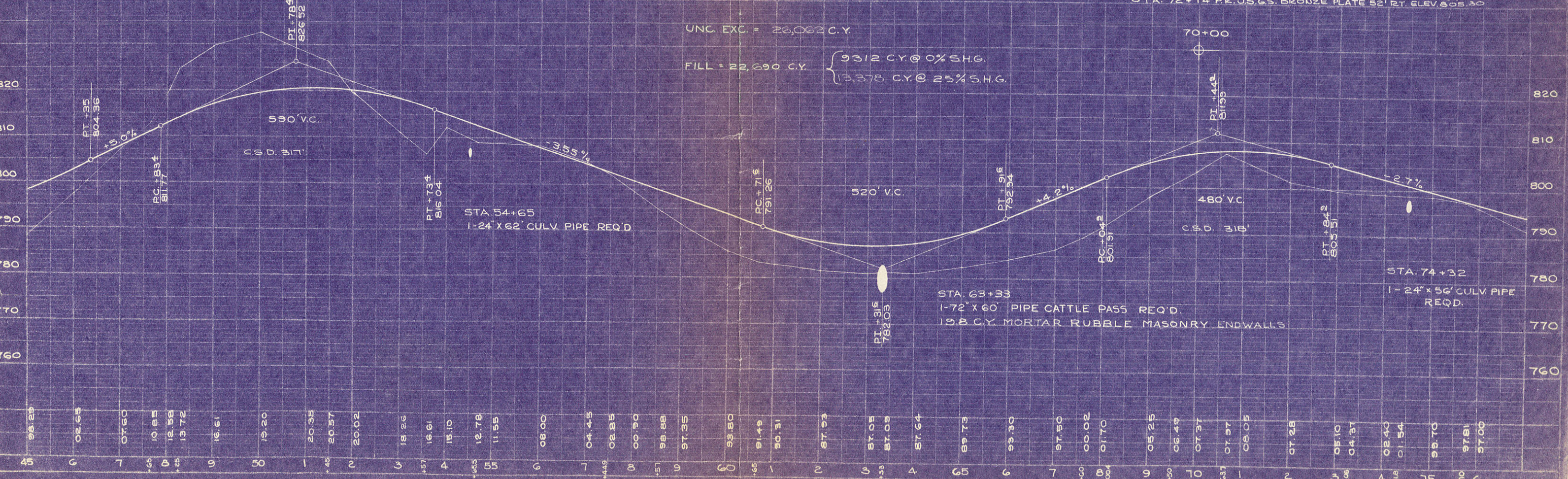
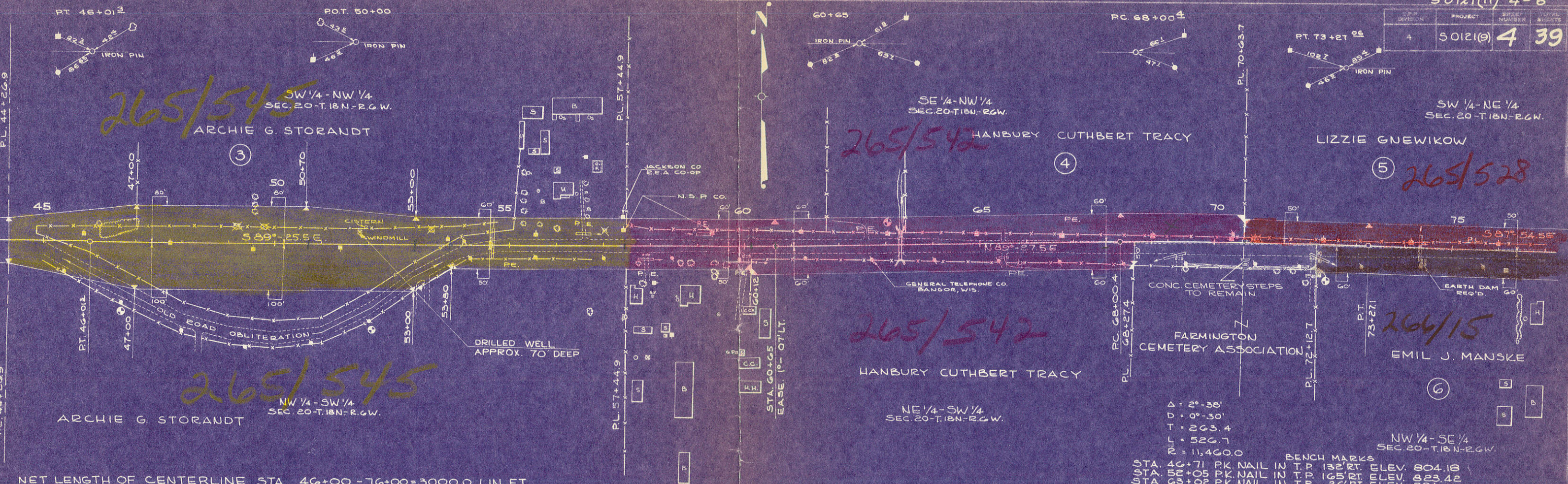
PLAN OF PARKING AREA AT CEMETERY
STA. 69+16 - 72+20



TYPICAL PARKING AREA SECTION AT CEMETERY



PROJECT	SECTION	NO.	SHEET
50121(9)	4	39	



SHEET NUMBER	TOTAL SHEETS
5	39

NORTHEAST CORNER OF SW 1/4 - NE 1/4, SEC. 20-T18N-R6W

NE COR. OF THE SE 1/4 - NE 1/4 SEC. 20-T18N R6W.

SW 1/4 - NE 1/4 SEC. 20-T18N-R6W

SE 1/4 - NE 1/4 SEC. 20-T18N-R6W

SW 1/4 - NW 1/4 SEC. 21-T18N-R6W

LIZZIE GNEWIKOW

JOHN GLENNIE ETAL.

WALTER PFAFF

265/528

268/321

266/17

266/15

268/301

265/532

STA. 80+63.1 EASE. 1'-35.5' LT.

STA. 100+68.3 EASE. 0'-09' LT.

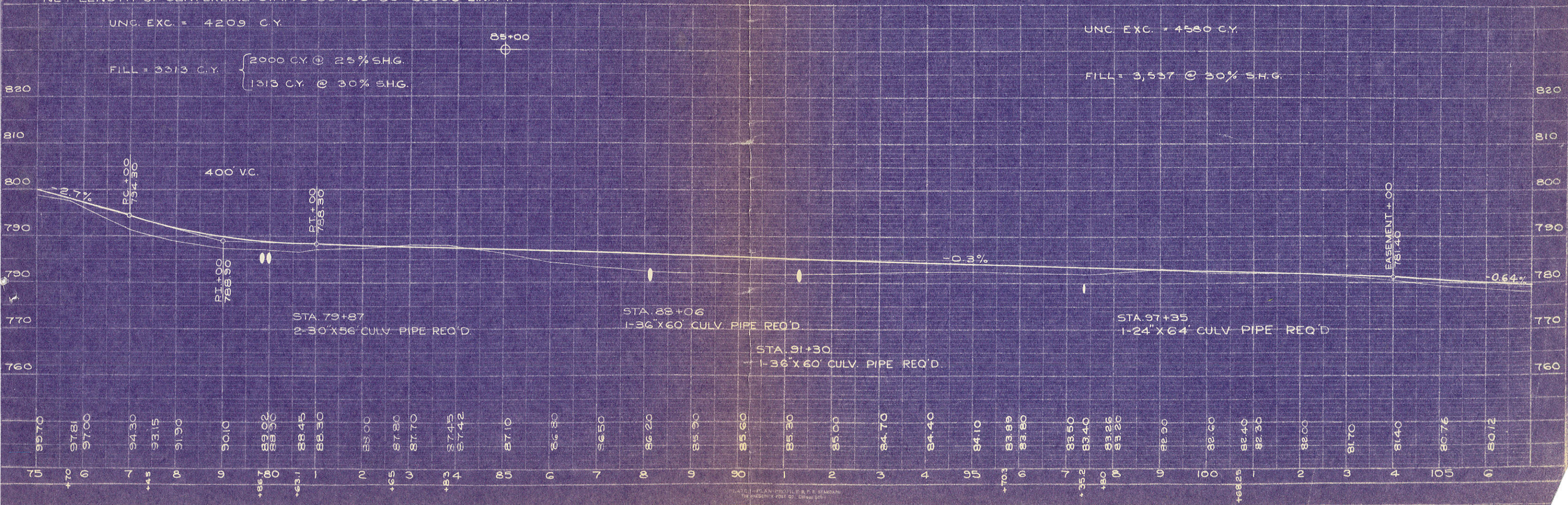
NET LENGTH OF CENTERLINE STA. 76+00-106+00= 30000 LIN. FT.

UNC. EXC. = 4209 C.Y.

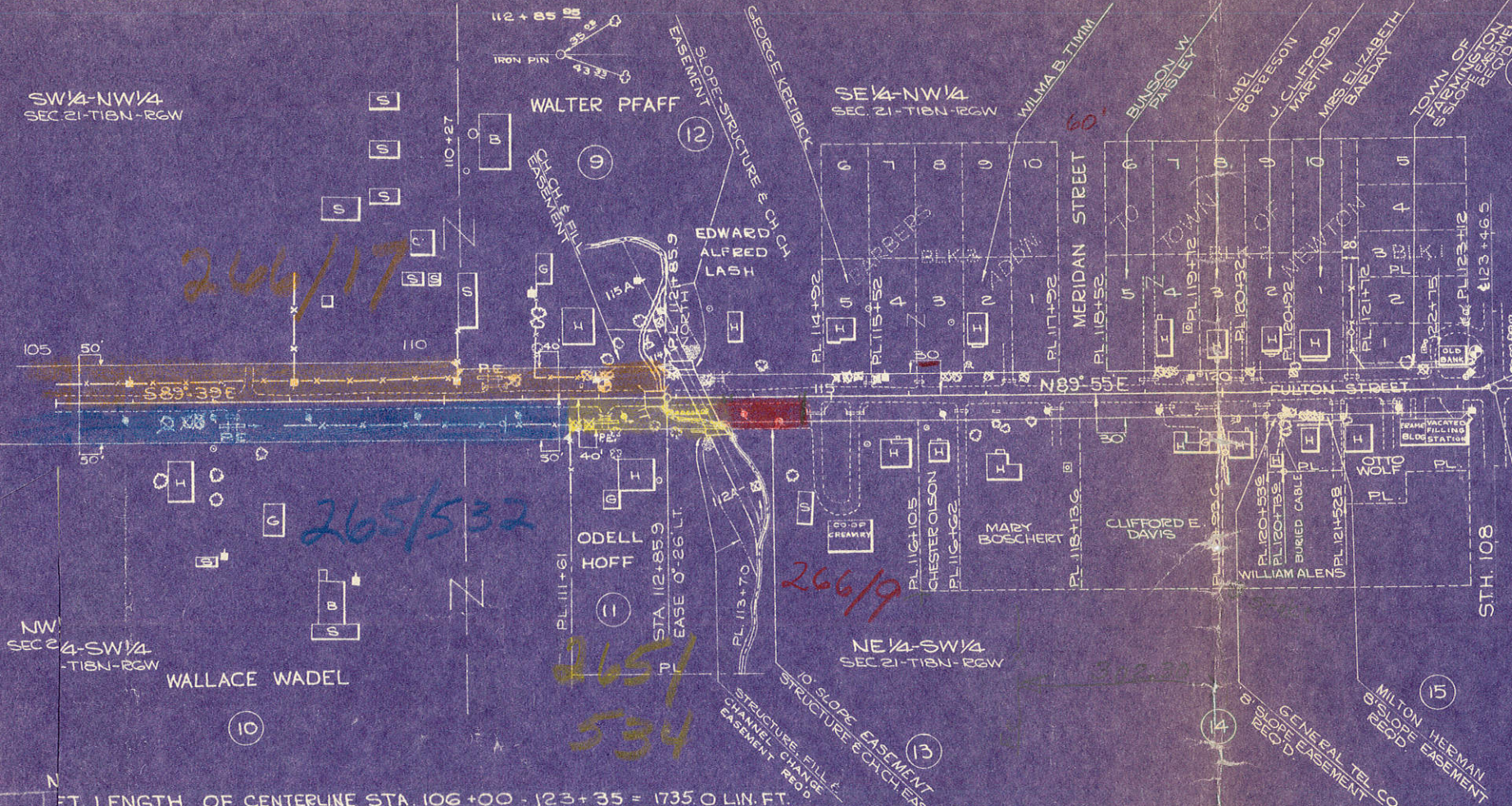
UNC. EXC. = 4580 C.Y.

FILL = 3313 C.Y. { 2000 C.Y. @ 25% SHG. 1313 C.Y. @ 30% SHG.

FILL = 3,537 @ 30% SHG.



D.P.R. DIVISION	PROJECT	SHEET NUMBER	TOTAL SHEETS
4	S 0121(9)	6	39



NOTE
FOR PLAN DETAILS OF CURB AND GUTTER SEE ENLARGED LAYOUT, SHEET # 2.

END OF PROJ. S 0121(9)(11)
STA. 123+35

STA. 123+45.3
CENTER OF SEC. 21-T18N-R6W
END OF RELOC. ORDER
PROJ. S 0121(9).

BENCH MARKS
STA. 111+92 SPIKE IN PP. 24' LT. ELEV. 777.29
STA. 123+12.5 USGS. CHIS □ ON STEP 30' LT. ELEV. 786.68

NET LENGTH OF CENTERLINE STA. 106+00 - 123+35 = 1735.0 LIN. FT.

