

INDEX OF SHEETS

SHEET NO. 1	TITLE
SHEET NO. 2	TYPICAL CROSS SECTIONS
SHEET NO. 2	ESTIMATE OF QUANTITIES
SHEET NO. 2	MISCELLANEOUS QUANTITIES
SHEET NO. -	RIGHT OF WAY PLAT
SHEET NO. 3-8	PLAN AND PROFILE STA. 0+00 TO STA. 172+44
SHEET NO. -	STANDARD DETAILS
SHEET NO. -	DRAINAGE STRUCTURES
SHEET NO. -	CROSS SECTIONS

COUNTY AND HIGHWAY	ROUTE AND SECTION	CLASS AND AGREEMENT		FEDERAL DIVISION OFFICE	SHEET NUMBER	TOTAL SHEETS
		STATE	FEDERAL			
32.6	124.0		13.1	4	1	8

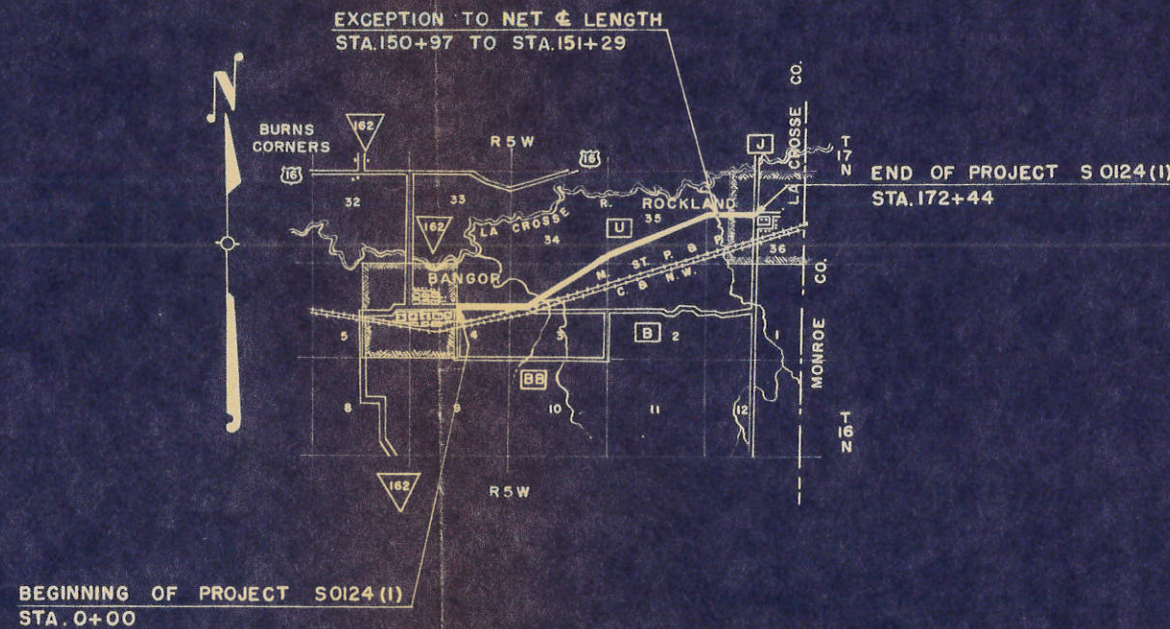
STATE OF WISCONSIN
STATE HIGHWAY COMMISSION OF WISCONSIN

PLAN AND PROFILE OF PROPOSED
BANGOR — ROCKLAND
LA CROSSE COUNTY
PROJECT S 0124 (1)

BEGINNING AT A POINT NEAR THE CENTER OF SECTION 4, T. 16 N., R. 5 W. AND EXTENDING NORTHEASTERLY TO A POINT NEAR THE CENTER OF SECTION 36, T. 17 N., R. 5 W.



SCALES { PLAN 1 IN. = 100 FT.
PROFILE HOR. 1 IN. = 100 FT. VERT. 1 IN. = 10 FT.
CROSS SECTIONS HOR. 1 IN. = 5 FT. VERT. 1 IN. = 5 FT.



CONVENTIONAL SIGNS

STATE LINE	-----	CULVERTS IN PLACE	-----
COUNTY LINE	-----	CULVERTS REQUIRED	-----
TOWNSHIP OR RANGE LINE	-----	DROP INLET	-----
SECTION LINE	-----	POWER POLE	-----
NEW RIGHT OF WAY LINE	-----	TELEPHONE OR TELEGRAPH POLE	-----
PRESENT RIGHT OF WAY LINE	-----	RIGHT OF WAY MARKERS	-----
WIRE FENCE { WOVEN	-----	REFERENCE STAKE FOR HUBS ONLY	-----
{ BARBED	-----	MARSH	-----
LOT LINE	-----	HEDGE	-----
CORPORATE OR CITY LIMITS	-----	TREES	-----
PROPERTY LINE	-----	GROUND ELEVATION	DATUM LINE
TRAVELED WAY OR P.E.	-----	GRADE ELEVATION	DATUM LINE
RAILROADS	-----		
BASE OR SURVEY LINE	-----		

LAYOUT

SCALE 1 MILE

TOTAL NET LENGTH OF CENTERLINE = 3.260 MI.



STATE HIGHWAY COMMISSION OF WISCONSIN MADISON, WIS.	DEPARTMENT OF COMMERCE BUREAU OF PUBLIC ROADS
SURVEYOR J. S. M. DIVISION COMPUTER A. R. D. DIVISION CHECKER R. C. J.	NOTE BOOK 56 (COUNTY) M. O. CHECKER CORRECT
CORRECT: DATE 6-3-55 W. L. Fessler DIVISION ENGINEER	RECOMMENDED FOR APPROVAL: DISTRICT ENGINEER
RECOMMENDED FOR APPROVAL: DATE 4/1/55 J. A. Pelt ENGINEER OF DESIGN	APPROVED: DIVISION ENGINEER
APPROVED: DATE 6/7/55 E. G. Ruppel STATE HIGHWAY ENGINEER	DATE

S 0124 (1)

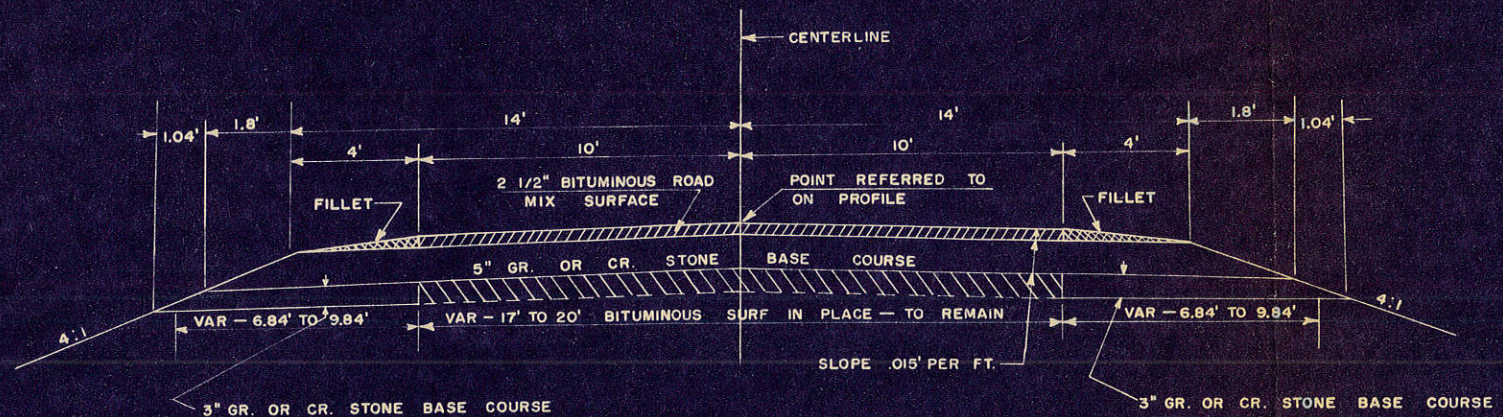
ESTIMATE OF QUANTITIES

CONTRACT NO. 1 & 2

PROJECT	SHEET NUMBER	TOTAL SHEETS
S 0124 (1)	2	8

THIS PROJECT IS TO BE EXECUTED UNDER THE STANDARD SPECIFICATIONS FOR ROAD AND BRIDGE CONSTRUCTION OF THE STATE HIGHWAY COMMISSION OF WISCONSIN — EDITION OF 1951, APPROVED JANUARY 23, 1952; FEDERAL AID REQUIRED
 CONTRACT PROVISIONS APPROVED JANUARY 31, 1955 AND SPECIAL PROVISIONS AS ATTACHED TO PROPOSALS

STATION TO STATION	NET LENGTH OF CENTER LINE	CLEARING	GRUBBING	EXCAVATION			SAND GRAVEL FILL	FINISHING ROADWAY	OBLITERATING OLD ROAD	GRAVEL OR CRUSHED STONE BASE		CULVERT PIPE					RIP-RAP	GUARD FENCE			MARKER POSTS FOR R/W	MARKER POSTS FOR R/W	PREPARATION OF ROAD-BED FOR BIT. SURF.	BITUMINOUS ROAD MIX SURFACE	BIT. MAT. FOR SURF. CRSE.	PLACING SHOULDER AGGREGATE	TOPSOIL	FER-TILIZER	SEEDING				
ITEM NO.		2101-	2101-	210-	210-	210-	2110-1	2114-1	2116-1	2203-1	2313-2						2512-1	2523-	2523-	2523-3	2523-4		2310-1	2313-1	2313-3	S. P.			2528-1	2528-2	2531-1	2532-1	
UNIT	LIN. FT.			C.Y.	C.Y.	C.Y.	C.Y.	STA.	STA.	C.Y.	C.Y.	LIN. FT.	LIN. FT.	LIN. FT.	LIN. FT.	LIN. FT.	C.Y.	LIN. FT.	EACH	EACH		STA.	SQ. YD.	GAL.	C.Y.			SQ. YD.	SQ. YD.	CWT.	SQ. YD.		
RURAL																																	
I	0 + 00 TO 172 + 44	17,212.0																					173	38,600	70,000	1040							
TOTAL																																	
		17,212.0								11,120	4630												173	38,600	70,000	1040							
CONTRACT NO.																																	
										1	1												2	2	2								

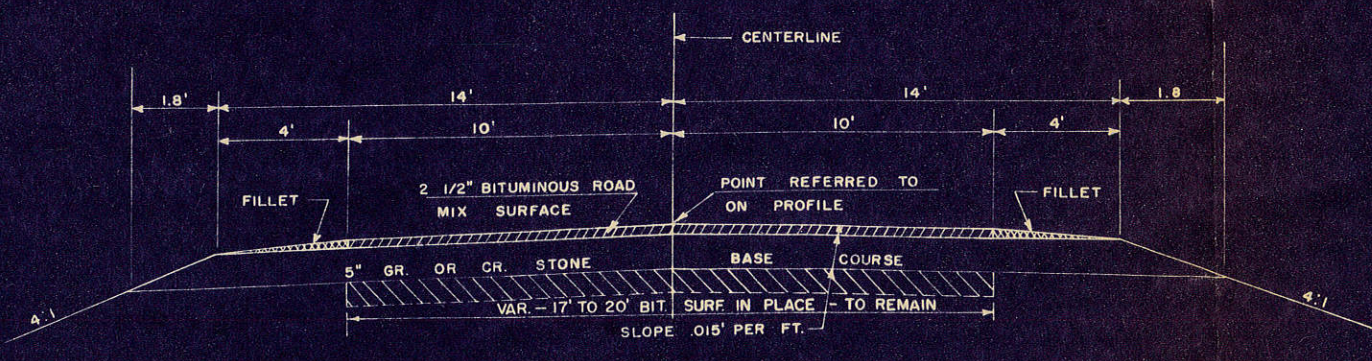


GR. OR CR. STONE BASE COURSE

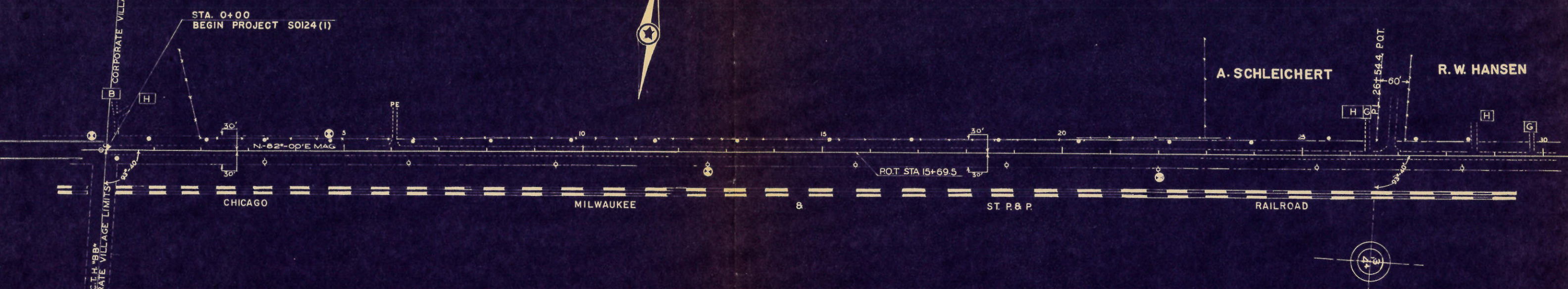
SEC. NO.	STATION	LOCATION		CU. YD.
		☒	RT.	
1	0 + 00 — 40 + 00	☒		3,000
1	40 + 00 — 159 + 29	☒		7,110
1	PRIVATE ENTRANCES			150
1	SIDE RD. — 39 + 60		☒	30
2	159 + 29 — 172 + 44	☒		790
2	PRIVATE ENTRANCES			10
2	OAK STREET — 168 + 95.5		☒	30

AGGREGATE FOR BITUMINOUS SURFACING

SEC. NO.	STATION	LOCATION		CU. YD.
		☒	RT.	
1	0 + 00 — 159 + 29	☒		3,186
1	SIDE ROAD — 39 + 60		☒	14
1	0 + 00 — 159 + 29 FILLETS	☒		1,060
2	159 + 29 — 172 + 44	☒		266
2	OAK STREET — 168 + 95.5		☒	14
2	159 + 29 — 172 + 44 FILLETS	☒		90



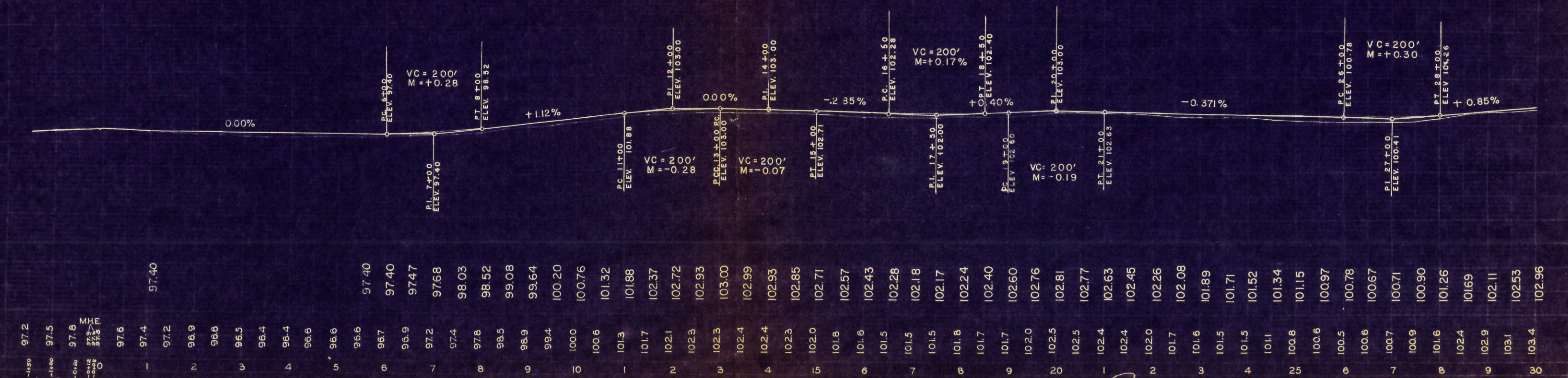
H. H. MEYER



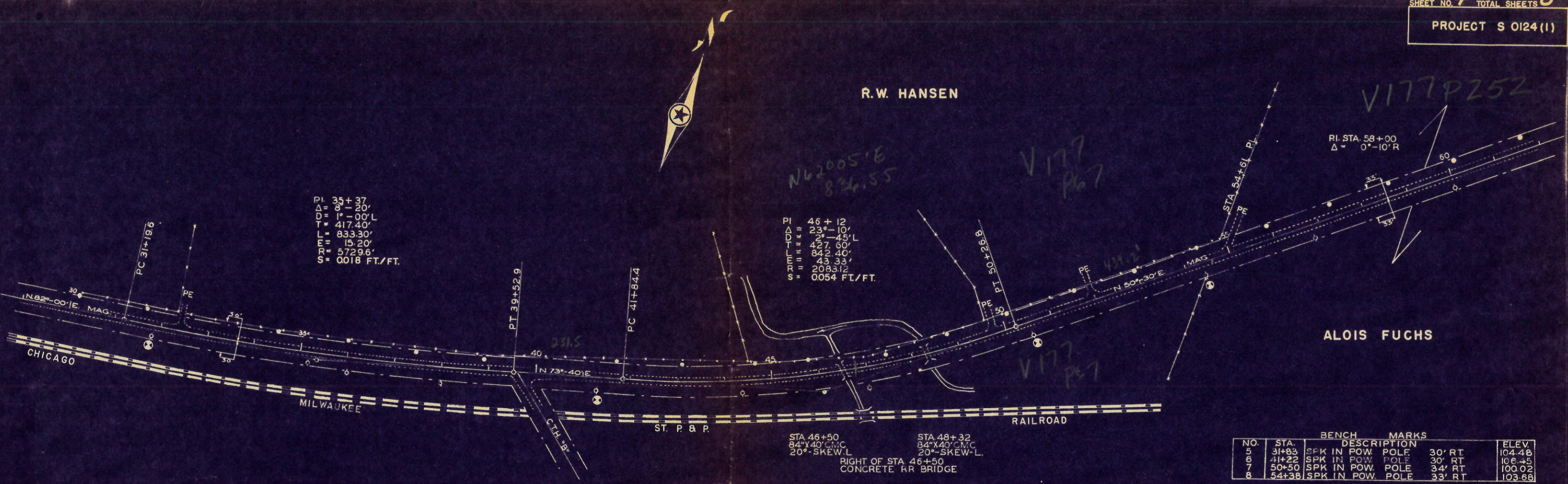
BENCH MARKS

NO.	STA.	DESCRIPTION	ELEV.
1	0+10	TOP NUT FIRE HYDR. 21' LT	100.00
2	4+75	SPK IN TELE POLE 25' LT	95.73
3	12+60	SPK IN POW. POLE 28' RT	101.77
4	21+98	SPK IN POW. POLE 30' RT	102.82

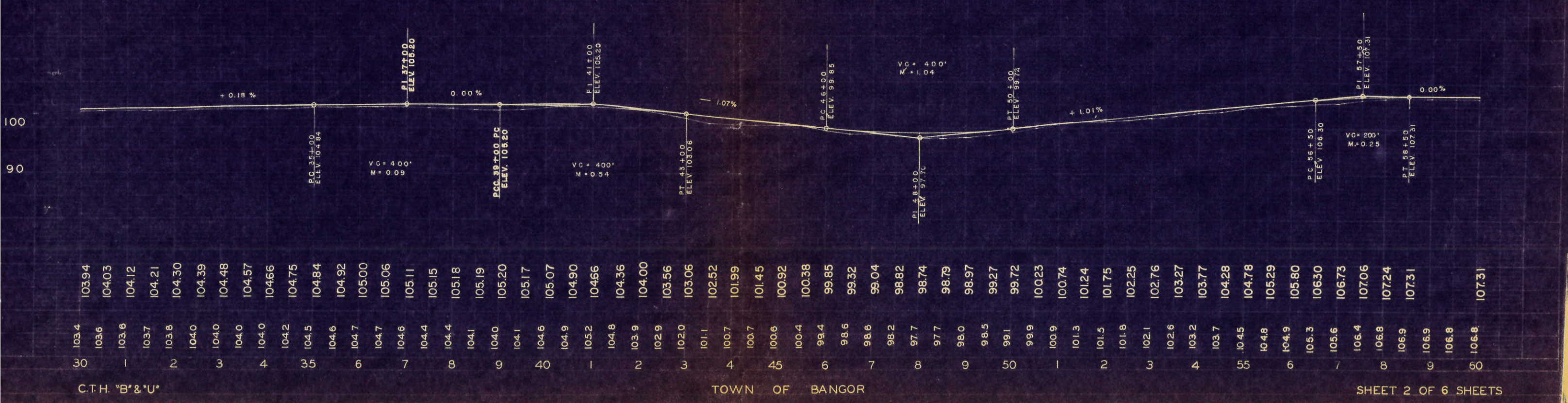
NET LENGTH OF CENTERLINE — STA. 0+00 TO STA. 30+00 = 3,000.0 L.F.



97.2	97.5	97.8	97.6	97.4	97.2	96.9	96.6	96.5	96.4	96.4	96.6	96.6	96.6	96.6	96.6	96.7	96.9	97.2	97.4	97.8	98.5	98.9	99.4	100.0	100.6	101.3	101.7	102.1	102.3	102.3	102.4	102.3	102.0	101.8	101.6	101.5	101.5	101.5	101.7	102.0	102.5	102.5	102.4	102.4	102.0	101.7	101.6	101.5	101.5	101.1	100.8	100.6	100.5	100.6	100.7	100.9	101.6	102.4	102.9	103.1	103.4								
1	2	3	4	5	6	7	8	9	10	1	2	3	4	5	6	7	8	9	10	11	12	13	14	15	16	17	18	19	20	1	2	3	4	5	6	7	8	9	10	11	12	13	14	15	16	17	18	19	20	1	2	3	4	5	6	7	8	9	10	11	12	13	14	15	16	17	18	19	20



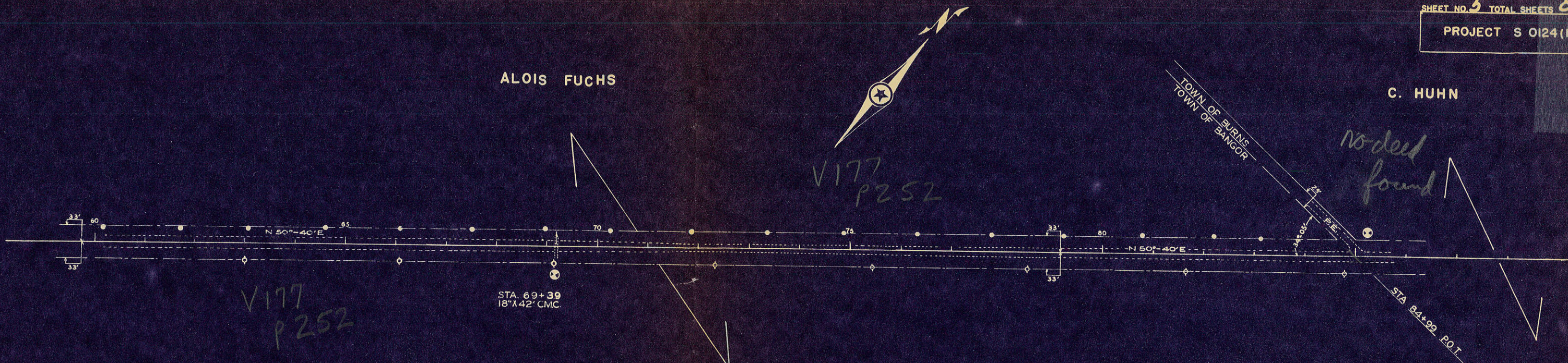
NET LENGTH OF CENTERLINE — STA. 30+00 TO STA. 60+00 = 3,000.0 L.F.



C.T.H. "B" & "U"

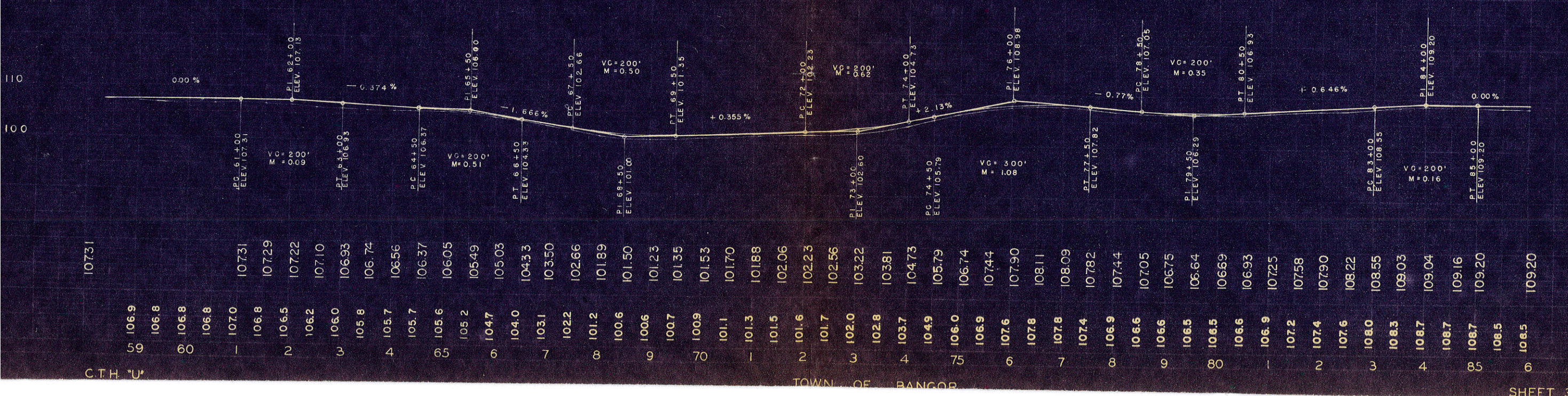
TOWN OF BANGOR

SHEET 2 OF 6 SHEETS



NET LENGTH OF CENTERLINE — STA. 60+00 TO STA. 85+00 = 2,500.0 L.F.

BENCH MARKS		ELEV.	
NO	STA	DESCRIPTION	
9	59+16	SPK. IN P.P. 33' RT.	100.39
10	85+25	SPK. IN P.P. 33' LT.	107.85



CTH. 'U'	STATION	ELEVATION
59	106.9	107.31
60	106.8	107.29
1	107.0	107.22
2	106.5	107.10
3	106.0	106.93
4	105.8	106.74
5	105.7	106.56
6	105.6	106.37
7	105.2	106.05
8	104.7	105.49
9	104.0	105.03
10	103.1	104.33
11	102.2	103.50
12	101.2	102.66
13	100.6	101.89
14	100.6	101.50
15	100.6	101.23
16	100.7	101.35
17	100.9	101.53
18	101.1	101.70
19	101.3	101.88
20	101.5	102.06
21	101.6	102.23
22	101.7	102.56
23	102.0	103.22
24	102.8	103.81
25	103.7	104.73
26	104.9	105.79
27	106.0	106.74
28	106.9	107.44
29	107.6	107.90
30	107.8	108.11
31	107.8	108.09
32	107.4	107.82
33	106.9	107.44
34	106.6	107.05
35	106.6	106.75
36	106.5	106.64
37	106.5	106.69
38	106.6	106.93
39	106.9	107.25
40	107.2	107.58
41	107.4	107.90
42	107.6	108.22
43	108.0	108.55
44	108.3	109.03
45	108.7	109.04
46	108.7	109.16
47	108.7	109.20
48	108.5	109.20
49	106.5	109.20

CTH. 'U'

TOWN OF BANGOR

C. HUHN

FLOYD JONES

NE. COR. SW 1/4 OF SW 1/4
SEC. 35 TN. 17 N R. 5. W.

ERNEST BERG

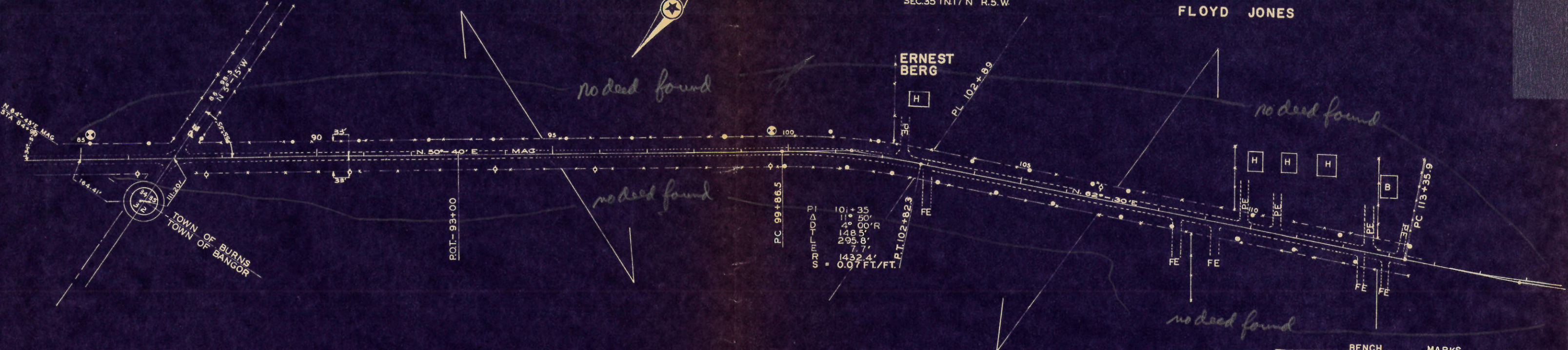
no deed found

no deed found

no deed found

no deed found

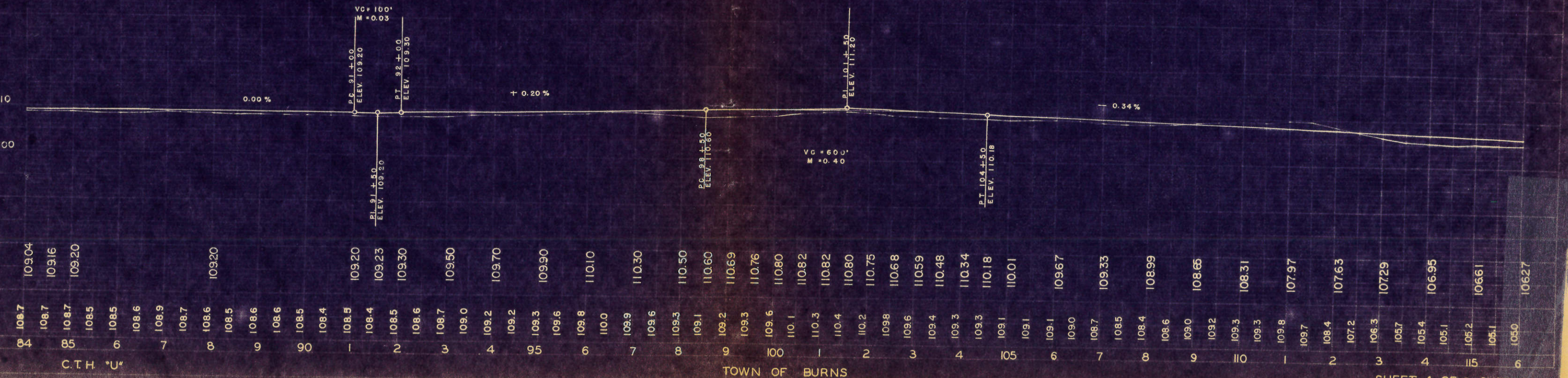
N 64° 45' E MAG
STA 04+00



PT 101+35
11° 50' R
4° 00' R
148.5'
295.8'
7.7'
143.24'
= 0.07 FT./FT.

NO.	STA.	DESCRIPTION	MARKS	ELEV.
10	85+25	SPK. IN P.P.	33' LT.	107.85
11	99+95	SPK. IN P.P.	30' LT.	108.45

NET LENGTH OF CENTERLINE — STA. 85+00 TO STA. 115+00 = 3,000.0 L.F.



STA.	ELEV.	STA.	ELEV.	STA.	ELEV.
84	108.7	90	108.4	96	109.8
85	108.7	91	108.5	97	110.0
86	108.5	92	108.6	98	109.9
87	108.5	93	108.7	99	109.6
88	108.5	94	108.7	100	109.6
89	108.5	95	108.7	101	109.3
90	108.4	96	108.5	102	110.2
91	108.5	97	108.6	103	109.8
92	109.2	98	108.6	104	110.4
93	109.3	99	108.6	105	110.0
94	109.6	100	108.6	106	109.6
95	109.6	101	108.6	107	108.7
96	110.0	102	108.6	108	108.4
97	110.3	103	108.6	109	108.6
98	110.4	104	108.6	110	108.3
99	110.4	105	108.6	111	107.9
100	110.8	106	108.6	112	107.6
101	110.8	107	108.6	113	107.2
102	110.8	108	108.6	114	106.9
103	110.8	109	108.6	115	106.6
104	110.8	110	108.6	116	106.2
105	110.75	111	108.6	117	105.7
106	110.68	112	108.6	118	105.4
107	110.59	113	108.6	119	105.1
108	110.48	114	108.6	120	105.2
109	110.34	115	108.6	121	105.1
110	110.18	116	108.6	122	105.0
111	110.01	117	108.6		
112	109.67	118	108.6		
113	109.33	119	108.6		
114	108.99	120	108.6		
115	108.65				
116	108.31				
117	107.97				
118	107.63				
119	107.29				
120	106.95				
121	106.61				
122	106.27				

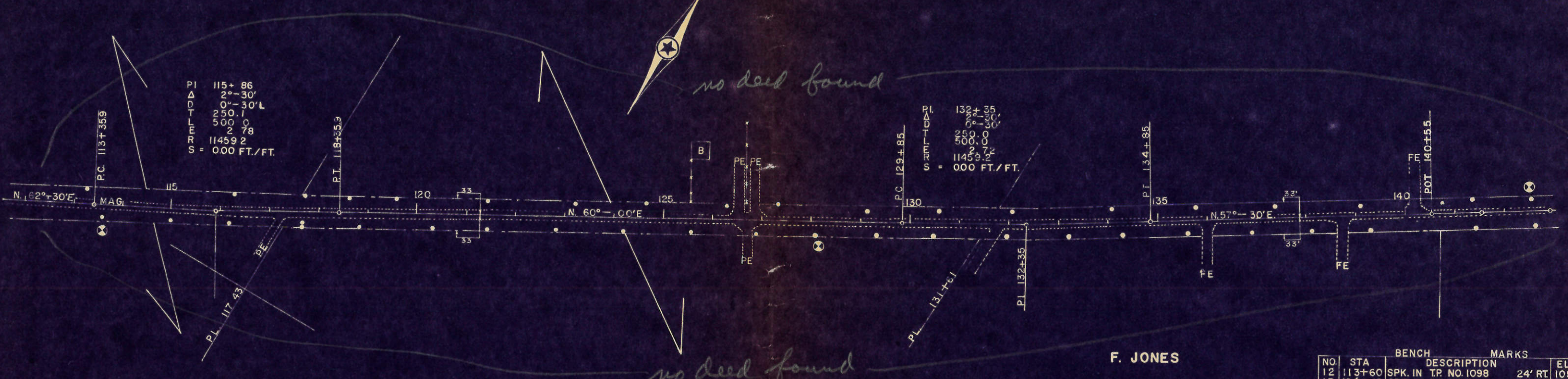
C.T.H. "U"

TOWN OF BURNS

FLOYD JONES

F. CASPER

O. OLSON

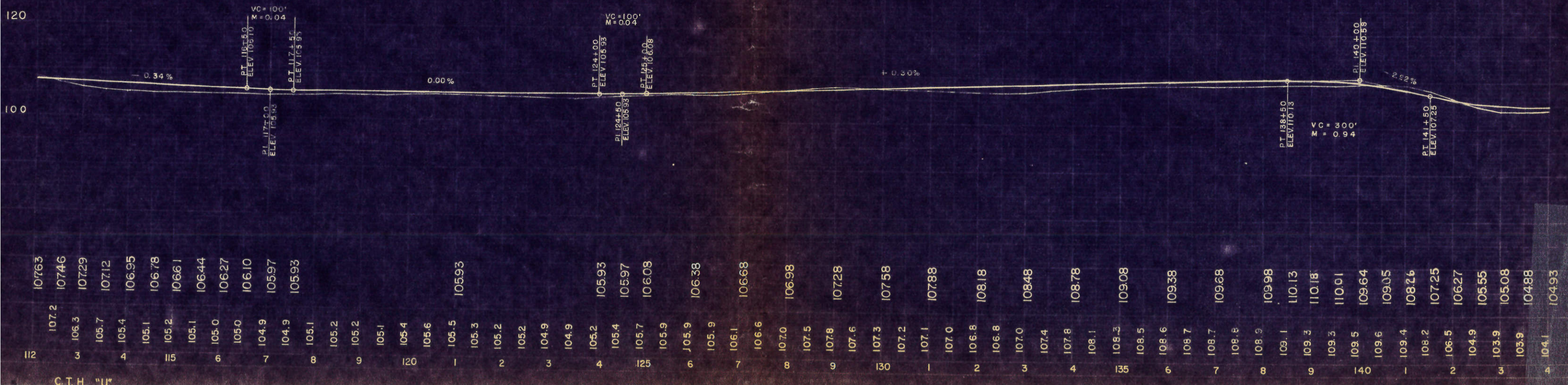


PI 115+86
Δ 2°-30'
L 250.1
LE 500.0
R 2 78
S = 11459.2
S = 0.00 FT./FT.

PI 132+35
Δ 2°-30'
L 250.0
LE 500.0
R 2 78
S = 11459.2
S = 0.00 FT./FT.

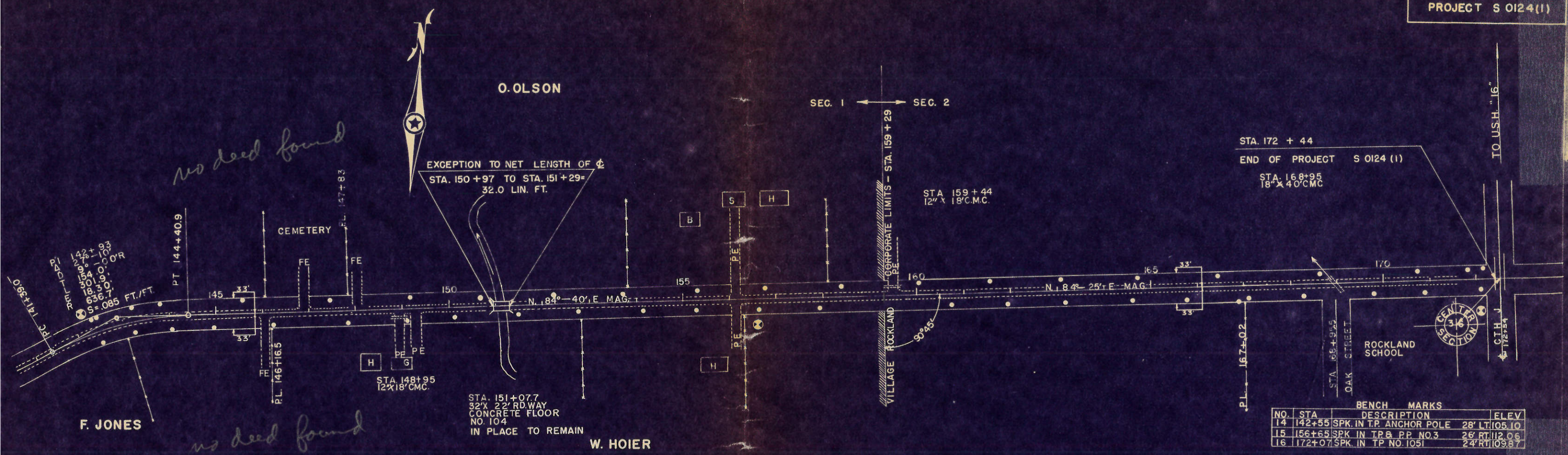
NET LENGTH OF CENTERLINE—STA. 115+00 TO STA. 142+00 = 2,700.0 L.F.

NO.	STA	BENCH	DESCRIPTION	MARKS	ELEV.
12	113+60	SPK. IN	TP NO. 1098	24' RT.	105.84
13	128+10	SPK. IN	TP NO. 7	3' RT.	108.30
14	142+55	SPK. IN	TP ANCHOR POLE	28' LT.	105.10



C.T.H. "U"

TOWN OF BURNS



BENCH MARKS

NO.	STA.	DESCRIPTION	ELEV.
14	142+55	SPK. IN T.P. ANCHOR POLE	28' LT 105.10
15	156+65	SPK. IN T.P. P.P. NO.3	26' RT 112.06
16	172+07	SPK. IN T.P. NO. 1051	24' RT 109.95

NET LENGTH CENTER LINE — SEC. 1 — STA. 142+00 TO STA. 159+29 = 1697.0 L.F.
 SEC. 2 — STA. 159+29 TO STA. 172+44 = 1315.0 L.F.
 SHEET TOTAL = 3012.0 L.F.

