

COUNTY AND HIGHWAY	ROUTE AND SECTION	CLASS AND AGREEMENT		FEDERAL DIVISION OFFICE	SHEET NUMBER
		STATE	FEDERAL		
32.6	121.0		11.8	4	1

INDEX OF SHEETS

- SHEET NO. 1 TITLE
- SHEET NO. 2 TYPICAL CROSS SECTIONS
- SHEET NO. 2 ESTIMATE OF QUANTITIES
- SHEET NO. 2 MISCELLANEOUS QUANTITIES
- SHEET NO. — RIGHT OF WAY PLAT
- SHEET NO. 3-8 PLAN AND PROFILE STA. 0+00 TO STA. 69+23
- SHEET NO. — STANDARD DETAILS
- SHEET NO. — DRAINAGE STRUCTURES
- SHEET NO. — CROSS SECTIONS

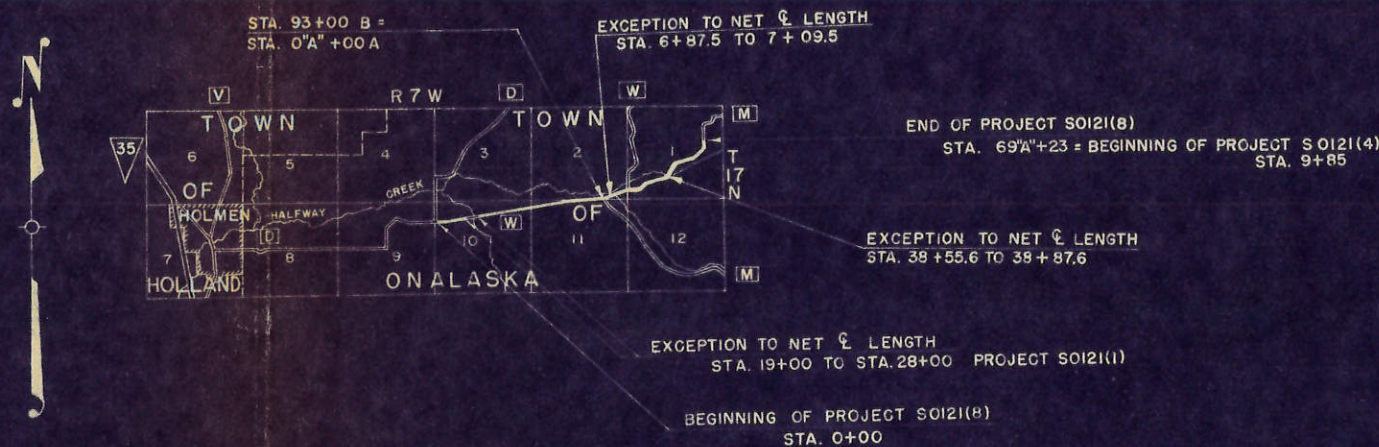


STATE OF WISCONSIN  
STATE HIGHWAY COMMISSION OF WISCONSIN

PLAN AND PROFILE OF PROPOSED  
**HOLMEN-MINDORO ROAD**  
LA CROSSE COUNTY  
PROJECT S 0121(8)  
C.T.H. "W" & "M"

BEGINNING AT A POINT NEAR THE SOUTHWEST CORNER OF THE N.W.1/4-N.W.1/4 OF SECTION 10, T17N-R7W AND EXTENDING NORTHEASTERLY TO A POINT APPROXIMATELY 1985' SOUTH AND 1090' WEST OF THE NORTHEAST CORNER OF SECTION 11, T17N-R7W.

SCALES PLAN 1 IN. = 100 FT.  
PROFILE HOR. 1IN. = 100 FT VERT 1 IN. = 10 FT.



CONVENTIONAL SIGNS			
STATE LINE	-----	CULVERTS IN PLACE	-----
COUNTY LINE	-----	CULVERTS REQUIRED	-----
TOWNSHIP OR RANGE LINE	-----	DROP INLET	-----
SECTION LINE	-----	POWER POLE	-----
NEW RIGHT OF WAY LINE	-----	TELEPHONE OR TELEGRAPH POLE	-----
PRESENT RIGHT OF WAY LINE	-----	RIGHT OF WAY MARKERS	-----
WIRE FENCE	WOVEN	REFERENCE STAKE FOR HUBS ONLY	-----
	BARBED	MARSH	-----
LOT LINE	-----	HEDGE	-----
CORPORATE OR CITY LIMITS	-----	TREES	-----
PROPERTY LINE	-----		
TRAVELED WAY OR P.E.	-----	GROUND ELEVATION	DATUM LINE
RAILROADS	-----	GRADE ELEVATION	DATUM LINE
BASE OR SURVEY LINE	-----		



STATE HIGHWAY COMMISSION OF WISCONSIN MADISON, WIS.		APPROVED FOR LA CROSSE COUNTY COMMISSION
SUPERVISOR: F.N.D. DISTRICT ENGINEER: R.C.J.		DATE: 7-30-56
CORRECTED: V.L. Fredler DISTRICT ENGINEER		RECOMMENDED FOR APPROVAL:
DATE: 8/8/56 J.P. Pelt ENGINEER & DESIGN		APPROVED:
DATE: 8/8/56 E.C. Rottgen STATE HIGHWAY ENGINEER		DIVISION ENGINEER

S 0121(8)

# ESTIMATE OF QUANTITIES

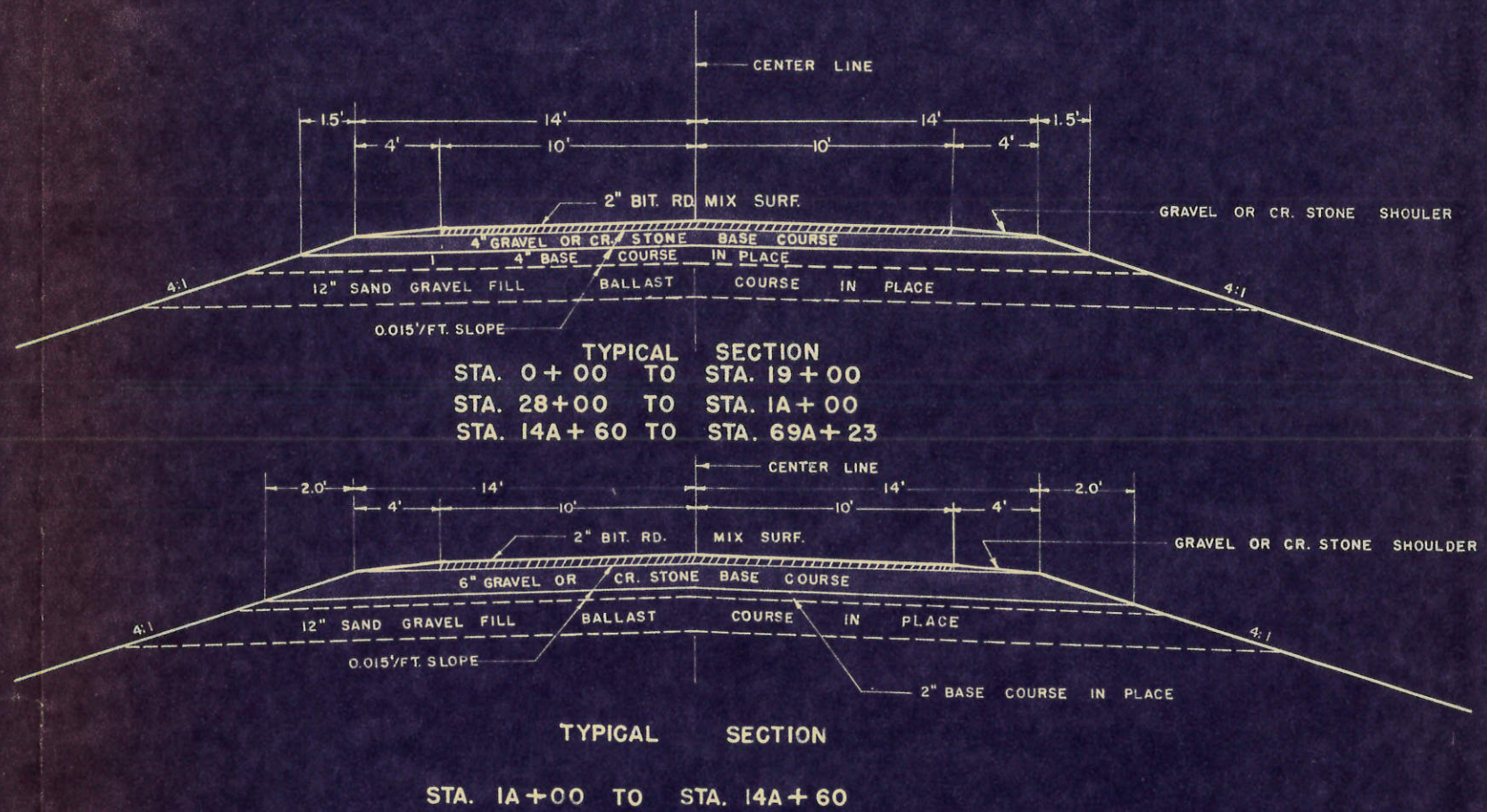
CONTRACT NO. 182

PROJECT	SHEET NUMBER	PAGE
S 0121(8)	2	8

THIS PROJECT IS TO BE EXECUTED UNDER THE STANDARD SPECIFICATIONS FOR ROAD AND BRIDGE CONSTRUCTION OF THE STATE HIGHWAY COMMISSION OF WISCONSIN — EDITION OF 1951. APPROVED JANUARY, 23, 1952; FEDERAL AID REQUIRED CONTRACT PROVISIONS APPROVED JANUARY 31, 1955. AND SPECIAL PROVISIONS AS ATTACHED TO PROPOSALS.

CONTRACT	STATION TO STATION	NET LENGTH OF CENTER LINE	CLEARING	GRUBBING	EXCAVATION			SAND GRAVEL FILL	FINISHING ROADWAY	OBLITERATING OLD ROAD	GRAVEL OR CRUSHED STONE		CULVERT PIPE					GUARD FENCE		MARKER POSTS FOR R/W	MARKER POSTS FOR R/W	PREPARATION OF ROAD BED FOR BIT. SURF.	BITUMINOUS ROAD MIX SURFACE	BIT. MAT. FOR SURF. CRSE	PLACING SHOULDER AGGREGATE	GRAVEL OR CRUSHED STONE BASE COURSE	TOPSOIL		FERTILIZER	SEEDING
					BASE COURSE	AGG. FOR BIT. RD. MIX SURF.	2512-1				2523-1	2523-2	2523-3	2523-4	2310-1	2313-1	2313-3	2528-1	2528-2								2531-1	2532-1		
UNIT	LIN. FT.				C.Y.	C.Y.	C.Y.	C.Y.	STA.	STA.	C.Y.	C.Y.	LIN. FT.	LIN. FT.	LIN. FT.	LIN. FT.	LIN. FT.	C.Y.	LIN. FT.	EACH	EACH	STA.	SQ. YD.	GAL.	C.Y.	C.Y.	SQ. YD.	SQ. YD.	CWT.	SQ. YD.
1	0+00 TO 69A+23	15,284.21									7600	3300																		
2	0+00 TO 69A+23	15,284.21																				153	34,000	49,100		740				

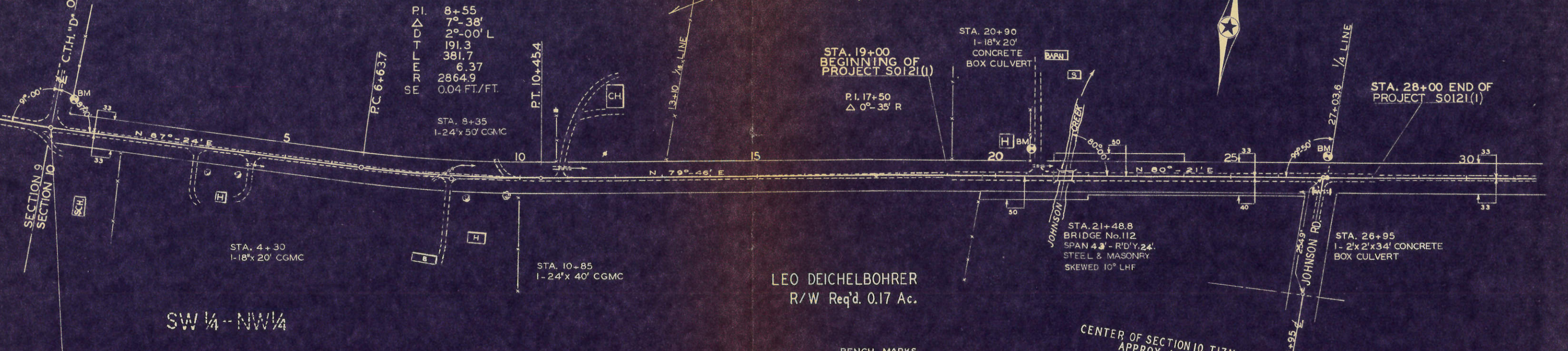
CONTRACT NO.



NW 1/4 - NW 1/4  
SECTION 10, T17N.-R7W

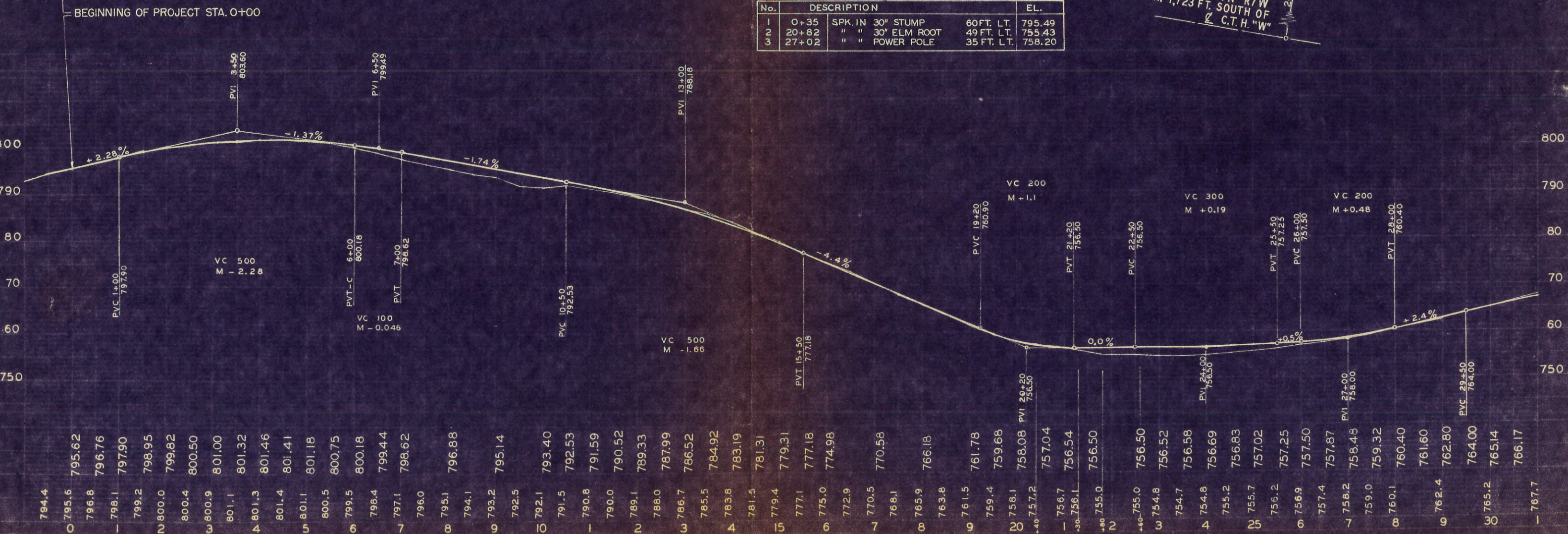
OSCAR S. LEE  
R/W Req'd. 0.11 Ac.

NE 1/4 - NW 1/4



BENCH MARKS

No.	DESCRIPTION	EL.
1	0+35 SPK. IN 30" STUMP	60 FT. LT. 795.49
2	20+82 " " 30" ELM ROOT	49 FT. LT. 755.43
3	27+02 " " POWER POLE	35 FT. LT. 758.20

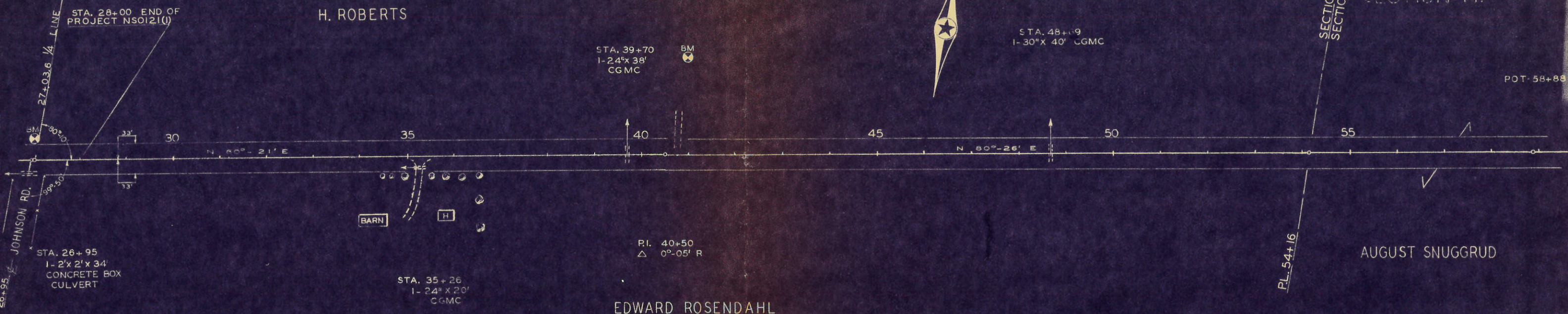


PROJECT	SHEET NO.	TOTAL SHEETS
SO121(B)	4	8

NW 1/4 - NE 1/4 SECTION 10, T.17N-R.7W

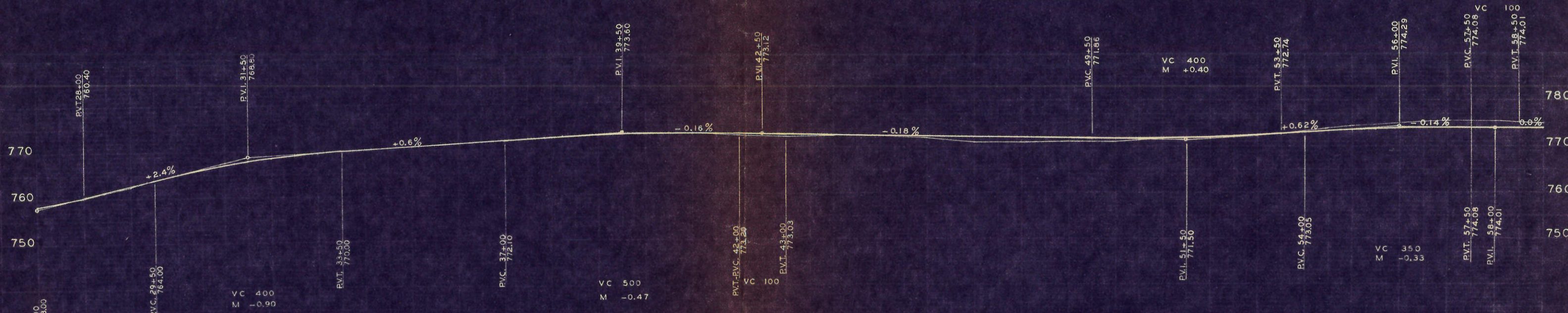
NE 1/4 - NE 1/4

NW 1/4 - NW 1/4 SECTION 11.



BENCH MARKS

No.	STA.	DESCRIPTION	ELEV.
3	27+02	POWER POLE No.K2-7 35'L	758.20
4	41+00	TELEPHONE POLE 200'L	767.50



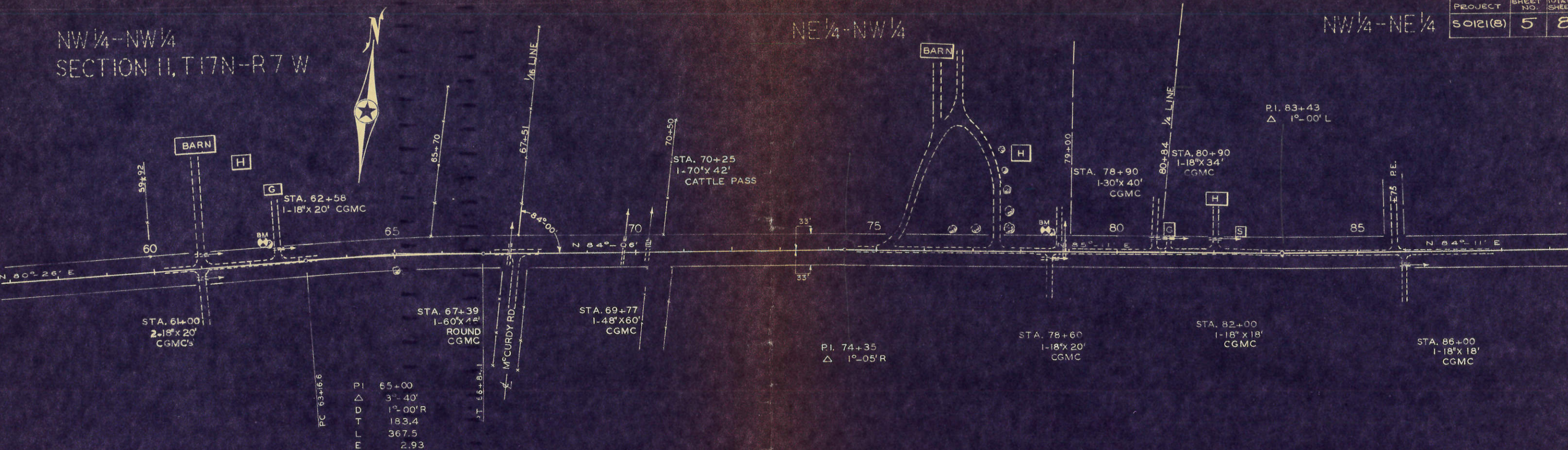
27	758.4	758.48	758.00	P.V.I. 27+00	758.00
28	760.4	759.32	764.00	P.V.C. 29+50	764.00
29	762.4	762.80	767.09	P.V.I. 31+50	768.50
30	765.2	764.00	770.00	P.V.T. 33+50	770.00
31	767.7	766.17	772.10	P.V.C. 37+00	772.10
32	768.7	768.59	773.13	P.V.I. 39+50	773.60
33	769.3	769.64	773.22	P.V.T. 42+00	773.20
34	770.0	770.00	773.27	P.V.I. 43+00	773.03
35	770.9	770.90	773.28	P.V.T. 44+00	773.03
36	771.2	771.50	773.26	P.V.C. 49+50	771.86
37	772.3	772.10	773.12	P.V.I. 53+50	772.74
38	772.8	772.38	773.12	P.V.T. 56+00	774.29
39	772.8	772.62	773.03	P.V.I. 57+50	774.08
40	773.0	772.83	773.03	P.V.T. 58+00	774.01
41	773.0	773.00	772.85	P.V.C. 54+00	773.03
42	773.3	773.22	772.85	P.V.I. 56+00	774.08
43	773.0	773.27	772.85	P.V.T. 57+50	774.08
44	773.0	773.28	772.85	P.V.I. 58+00	774.01
45	773.0	773.26	772.85	P.V.T. 58+50	774.01
46	773.3	773.13	772.85		
47	773.0	773.27	772.85		
48	773.0	773.28	772.85		
49	773.0	773.26	772.85		
50	773.3	773.13	772.85		
51	773.0	773.27	772.85		
52	773.0	773.28	772.85		
53	773.0	773.26	772.85		
54	773.3	773.13	772.85		
55	773.0	773.27	772.85		
56	773.0	773.28	772.85		
57	773.0	773.26	772.85		
58	773.3	773.13	772.85		
59	773.0	773.27	772.85		
60	773.0	773.28	772.85		

NW 1/4 - NW 1/4  
SECTION 11, T17N-R7W

NE 1/4 - NW 1/4

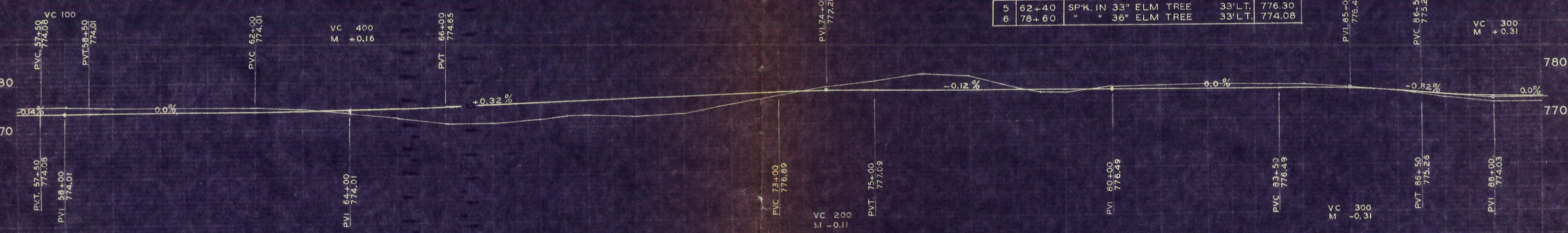
NW 1/4 - NE 1/4

PROJECT	SHEET NO.	TOTAL SHEETS
50121(8)	5	8



PC 63+16.6  
 PI 65+00  
 PD 3'-40'  
 DT 1°-00'R  
 LT 183.4  
 ET 367.5  
 MR 2.93  
 RR 5729.7  
 SE 0.02 FT/FT.

BENCH MARKS			
No.	STA.	DESCRIPTION	ELEV
5	62+40	SP'K. IN 33" ELM TREE	33'LT. 776.30
6	78+60	" " 36" ELM TREE	33'LT. 774.08

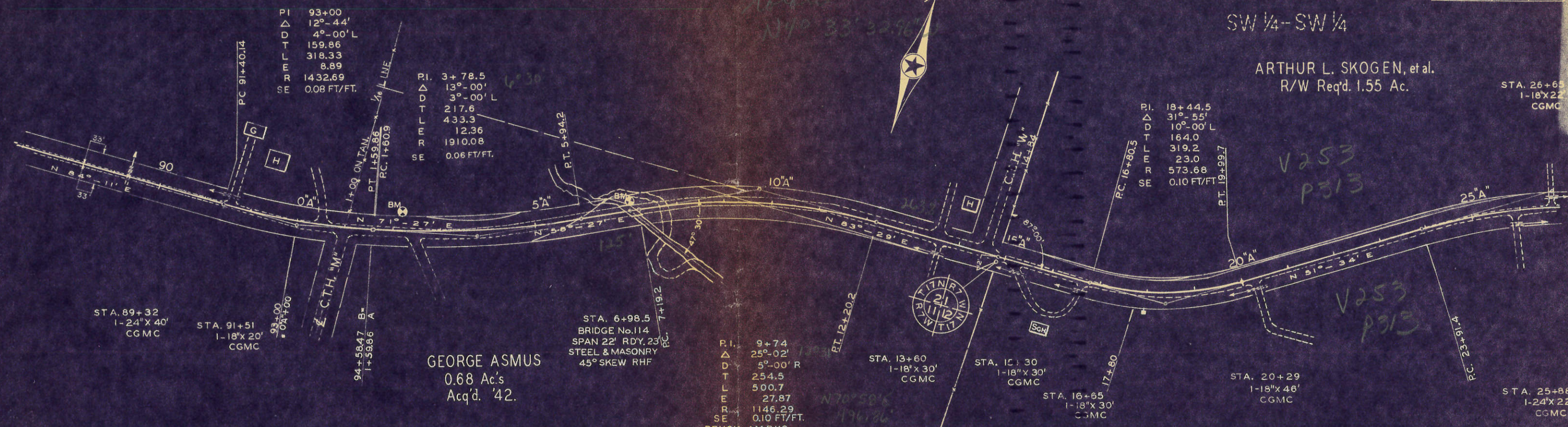


775.5	774.11	775.4	774.08	775.1	774.03	775.0	774.01	774.9	774.01	774.4	774.02	774.6	774.17	774.26	774.37	774.50	774.65	771.1	774.65	771.1	774.97	771.7	775.29	772.3	772.4	775.61	772.1	775.93	772.6	776.25	774.3	776.57	776.1	776.89	777.02	777.10	777.12	777.09	780.2	776.97	779.8	776.85	777.0	776.73	776.1	775.9	776.61	776.56	777.0	776.52	776.50	776.49	777.3	776.49	777.5	776.49	777.2	776.49	776.49	777.2	776.46	776.4	776.35	776.18	775.94	775.64	775.26	775.88	774.58	773.1	774.34	774.17	773.1	773.1																																																																					
57	58	59	60	61	62	63	64	65	66	67	68	69	70	71	72	73	74	75	76	77	78	79	80	81	82	83	84	85	86	87	88	89	90	91	92	93	94	95	96	97	98	99	100	101	102	103	104	105	106	107	108	109	110	111	112	113	114	115	116	117	118	119	120	121	122	123	124	125	126	127	128	129	130	131	132	133	134	135	136	137	138	139	140	141	142	143	144	145	146	147	148	149	150	151	152	153	154	155	156	157	158	159	160	161	162	163	164	165	166	167	168	169	170	171	172	173	174	175	176	177	178	179	180	181	182	183	184	185	186	187	188	189	190	191	192	193	194	195	196	197	198	199	200

SW 1/4 - SW 1/4

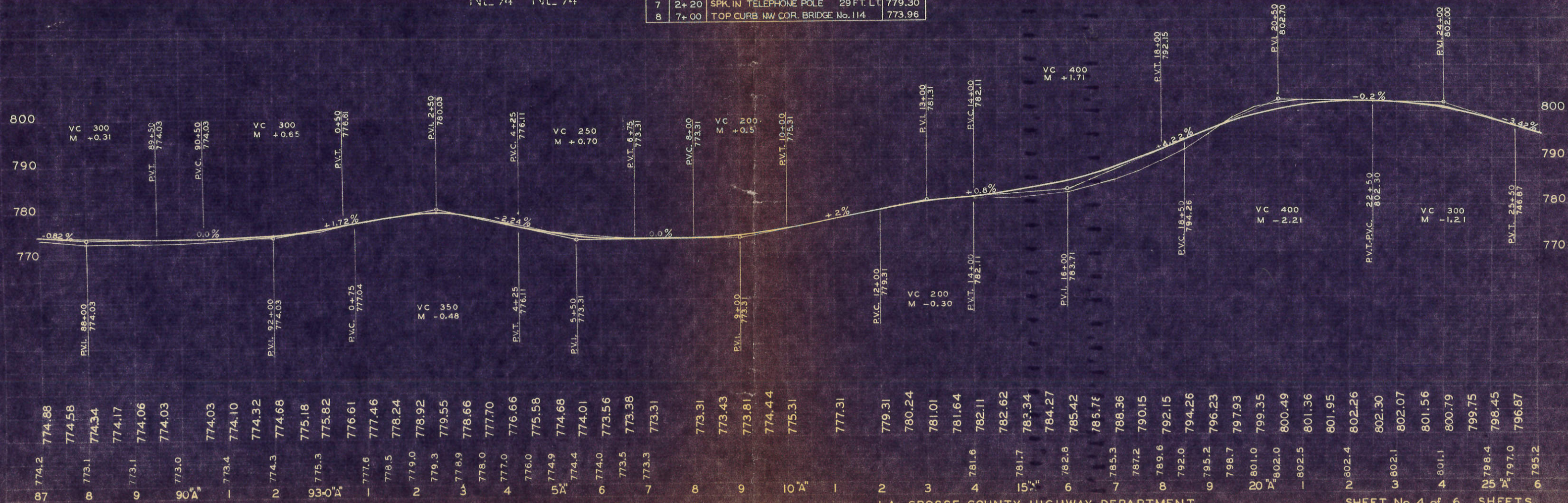
ARTHUR L. SKOGEN, et al.  
R/W Req'd. 1.55 Ac.

STA. 26+65  
1-18"X22"  
CGMC



GEORGE ASMUS  
0.68 Ac's  
Acq'd. '42.  
NE 1/4 - NE 1/4

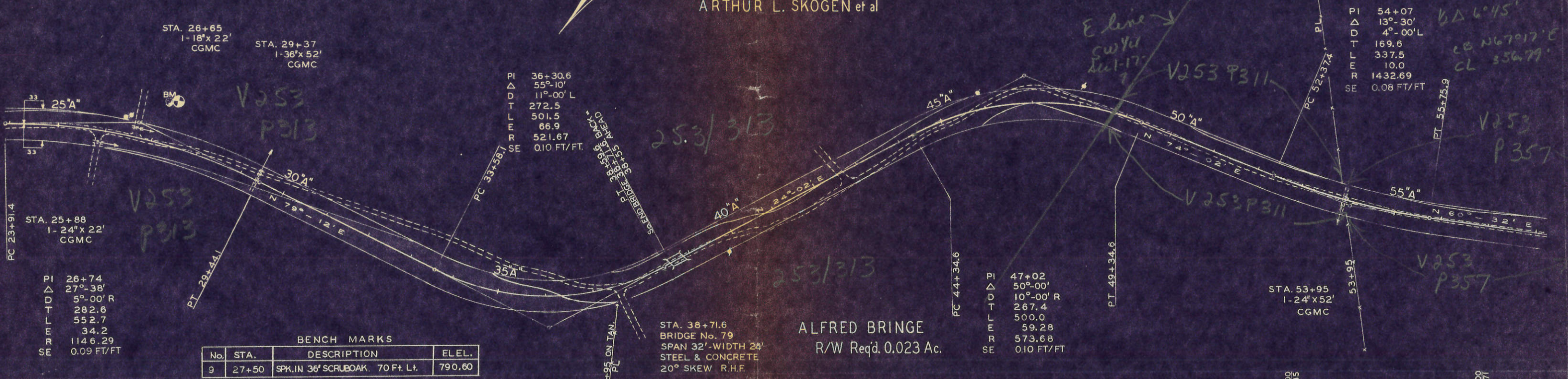
No.	STA.	DESCRIPTION	ELEV.
7	2+20	SPK. IN TELEPHONE POLE 29 FT. LT.	779.30
8	7+00	TOP CURB NW COR. BRIDGE No. 114	773.96



SE 1/4 - SW 1/4  
SEC. 1, T17N - R7W

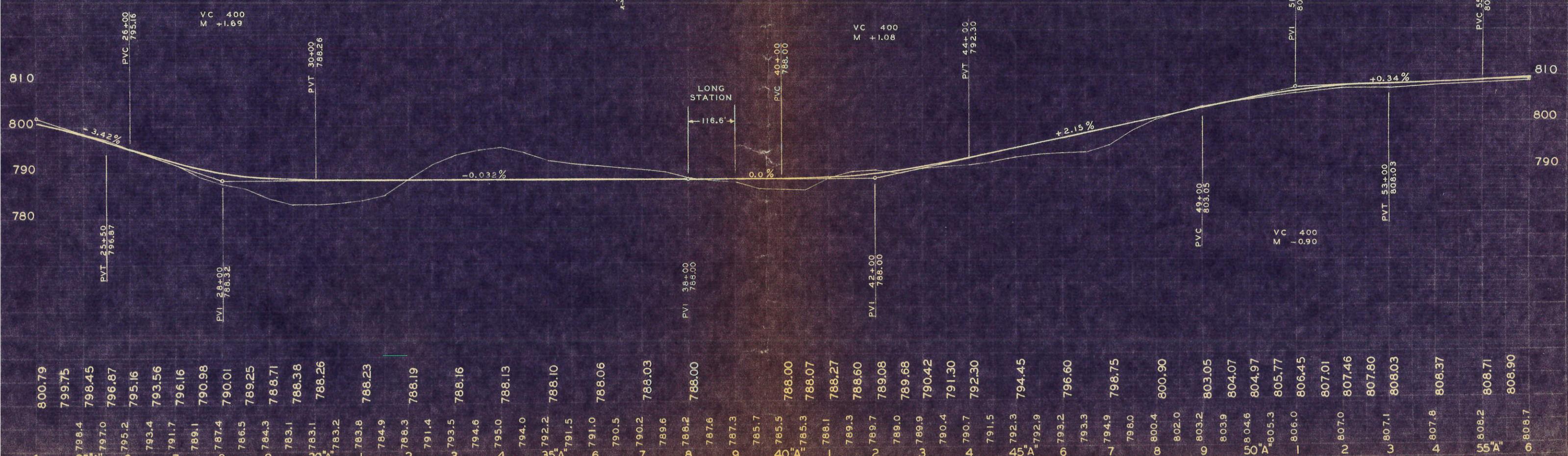
NE 1/4 - SW 1/4

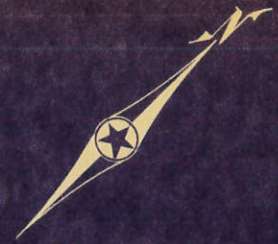
ARTHUR L. SGOGEN et al



BENCH MARKS

No.	STA.	DESCRIPTION	ELEL.
9	27+50	SPK. IN 36' SCRUBOAK, 70 Ft. Lt.	790.60





see plan # 17

