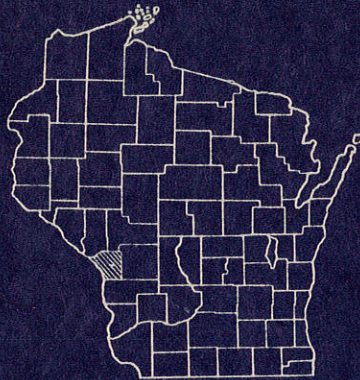


INDEX OF SHEETS

SHEET NO. 1	TITLE
SHEET NO. 2	TYPICAL CROSS SECTIONS
SHEET NO. 2	ESTIMATE OF QUANTITIES
SHEET NO. —	MISCELLANEOUS QUANTITIES
SHEET NO. —	RIGHT OF WAY PLAT
SHEET NO. 2	PLAN AND PROFILE STA. 152+58.76 TO STA. 152+91.24
SHEET NO. —	STANDARD DETAILS
SHEET NO. 3-4	DRAINAGE STRUCTURES
SHEET NO. —	CROSS SECTIONS



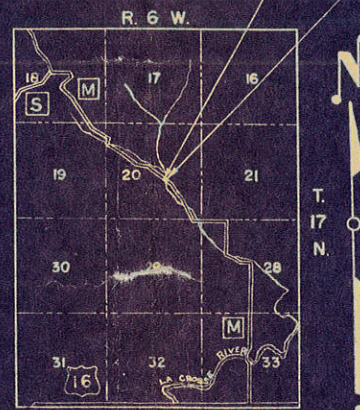
STATE OF WISCONSIN  
STATE HIGHWAY COMMISSION OF WISCONSIN

PLAN AND PROFILE OF PROPOSED  
WEST SALEM - HOLMEN ROAD

LA CROSSE COUNTY  
PROJECT S 0865(2)  
C.T.H. "M"

BEGINNING AT A POINT 508 FEET EAST AND 132 FEET SOUTH OF  
THE CENTER OF SECTION 20, R6W, T17N; THENCE EASTERLY TO A  
POINT 478 FEET EAST AND 118 FEET SOUTH OF THE CENTER OF SECTION 20, R6W, T17N.

SCALES { PLAN 1 IN. = 100 FT.  
PROFILE HOR. 1 IN. = 100 FT. VERT. 1 IN. = 10 FT.



BEGINNING OF PROJECT S 0865(2)  
STA. 152+58.76

END OF PROJECT S 0865(2)  
STA. 152+91.24

LAYOUT

SCALE 1 MILE

TOTAL NET LENGTH OF CENTERLINE = 0.006 MI.

WATSON COLLIER BR

COUNTY AND HIGHWAY	ROUTE AND SECTION	CLASS AND AGREEMENT		FEDERAL DIVISION OFFICE	SHEET NUMBER	TOTAL SHEETS
32.6	865.0	STATE	FEDERAL	WIS. 4	1	4

CONVENTIONAL SIGNS

STATE LINE	-----	CULVERTS IN PLACE	-----
COUNTY LINE	-----	CULVERTS REQUIRED	-----
TOWNSHIP OR RANGE LINE	-----	DROP INLET	-----
SECTION LINE	-----	POWER POLE	-----
NEW RIGHT OF WAY LINE	-----	TELEPHONE OR TELEGRAPH POLE	-----
PRESENT RIGHT OF WAY LINE	-----	RIGHT OF WAY MARKERS	-----
WIRE FENCE { WOVEN	-----	REFERENCE STAKE FOR HUBS ONLY	-----
{ BARBED	-----	MARSH	-----
LOT LINE	-----	HEDGE	-----
CORPORATE OR CITY LIMITS	-----	TREES	-----
PROPERTY LINE	-----		
TRAVELED WAY OR P.E.	-----		
RAILROADS	-----		
BASE OR SURVEY LINE	-----		

APPROVED FOR LA CROSSE COUNTY BY:

8-14-56 DATE *P. J. ...* COMMISSIONER

STATE HIGHWAY COMMISSION OF WISCONSIN MADISON, WIS.

SURVEYOR F. D. NOTE BOOK L.A.X. CO. L.L.  
DIVISION COMPUTER J. W. J. M. O. CHECKER  
DISTRICT CHECKER R. C. J. CORRECT

CORRECT:  
DATE 8-15-56 *V. L. ...* DISTRICT ENGINEER

RECOMMENDED FOR APPROVAL:  
DATE 8-23-56 *J. S. ...* ENGINEER OF DESIGN

APPROVED:  
DATE 8/23/56 *E. C. ...* STATE HIGHWAY ENGINEER

DEPARTMENT OF COMMERCE BUREAU OF PUBLIC ROADS

APPROVED: \_\_\_\_\_ DATE \_\_\_\_\_  
DISTRICT ENGINEER

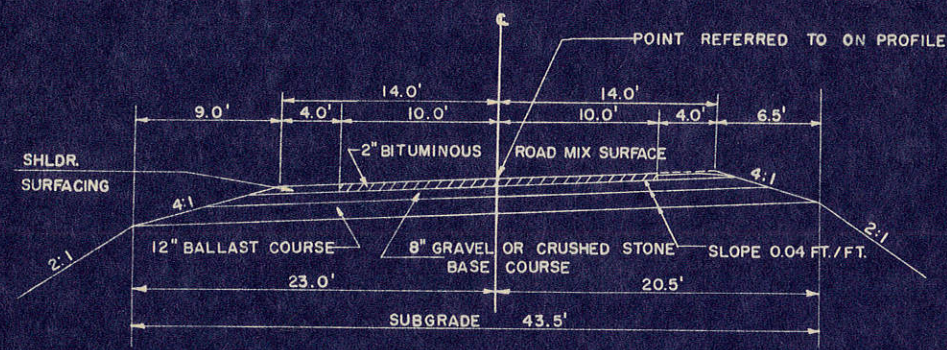
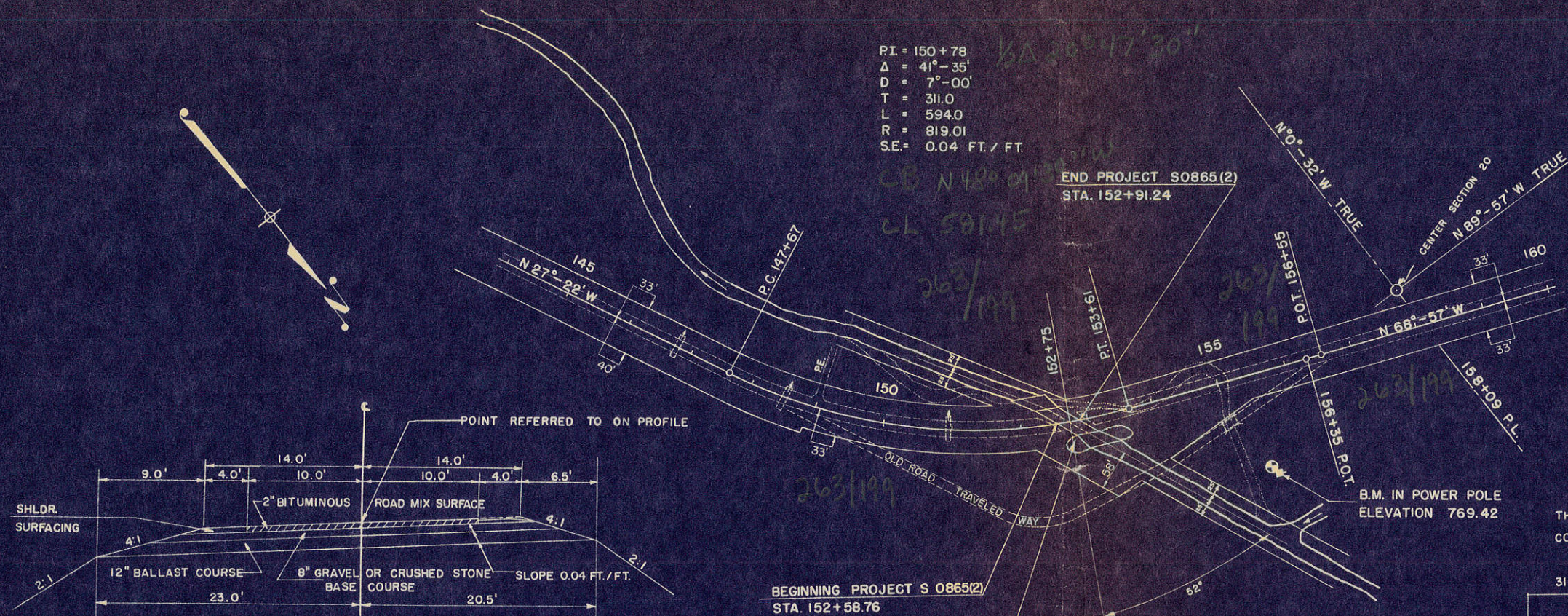
S 0865(2)



PI = 150+78  
 Δ = 41°-35'  
 D = 7°-00'  
 T = 311.0  
 L = 594.0  
 R = 819.01  
 S.E. = 0.04 FT./FT.

END PROJECT S0865(2)  
 STA. 152+91.24

BEGINNING PROJECT S 0865(2)  
 STA. 152+58.76

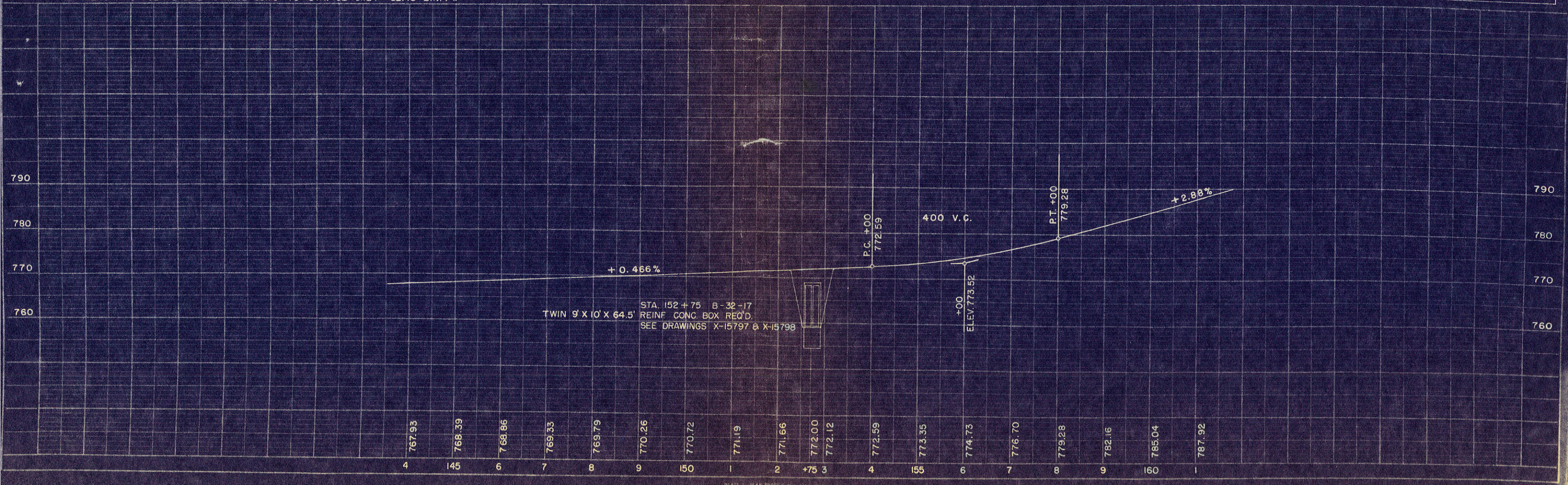


### ESTIMATE OF QUANTITIES

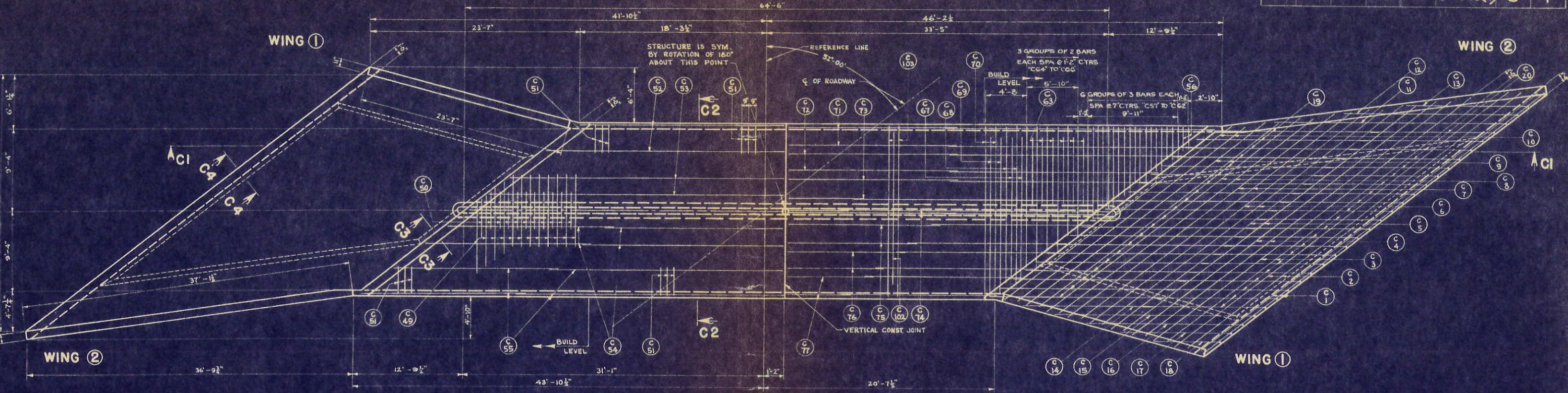
THIS PROJECT IS TO BE EXECUTED UNDER THE STANDARD SPECIFICATIONS FOR ROAD AND BRIDGE CONSTRUCTION OF THE STATE HIGHWAY COMMISSION OF WISCONSIN—EDITION OF 1951, APPROVED JANUARY 23, 1952, FEDERAL AID REQUIRED CONTRACT PROVISIONS APPROVED JANUARY 31, 1955, AND SPECIAL PROVISIONS AS ATTACHED TO PROPOSALS.

STATION TO STATION	NET LENGTH OF CENTERLINE	EXCAVATION FOR STRUCTURES BRIDGES	SAND-GRAVEL FILL	CONCRETE MASONRY BRIDGES	BAR STEEL REINFORCEMENT BRIDGES
		UNIT	UNIT	UNIT	UNIT
		2107-1	2110-1	2401-1	2406-2
	LIN. FT.	C.Y.	C.Y.	C.Y.	L.B.
152+58.76 - 152+91.24	32.48	170	150	208.2	26,550

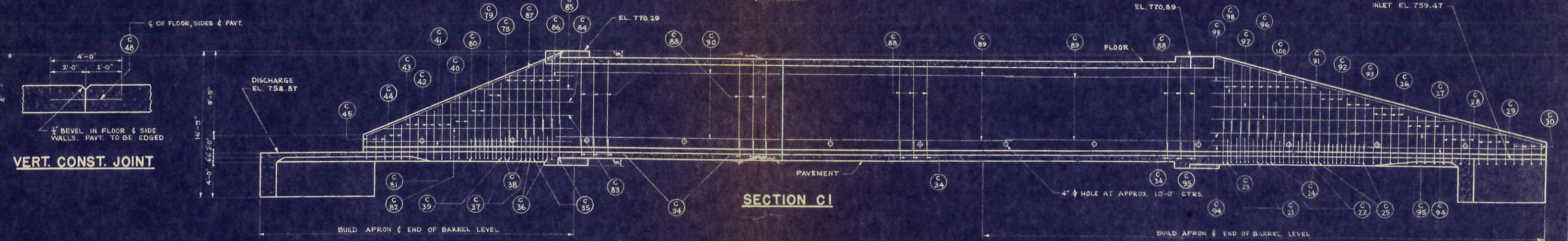
NET LENGTH OF CENTERLINE STA. 152+58.76 TO STA. 152+91.24 = 32.48 LIN. FT.



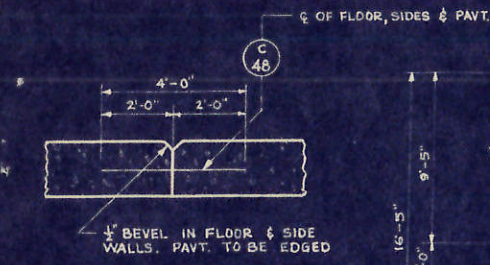




PLAN



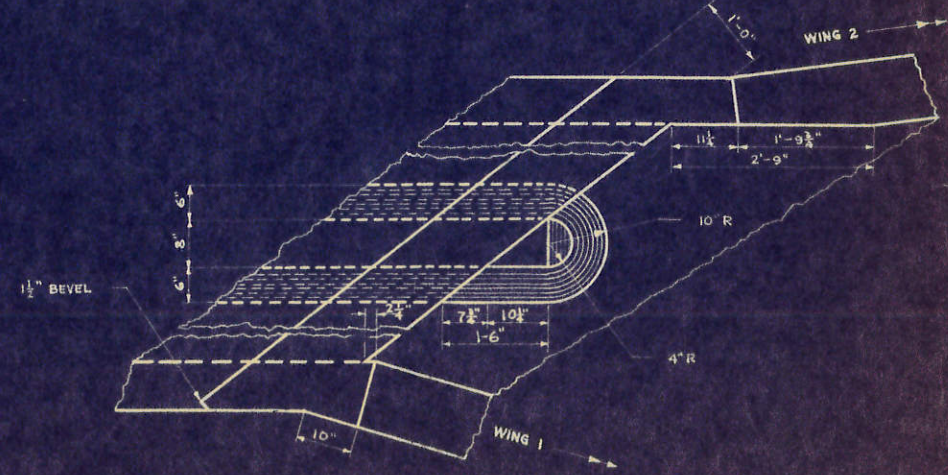
SECTION C1



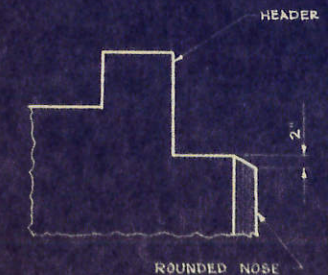
VERT. CONST. JOINT

**GENERAL NOTES**

DRAWINGS SHALL NOT BE SCALED.  
 ALL CONCRETE MASONRY SHALL BE GRADE "AA".  
 BEVEL EXPOSED EDGES OF CONCRETE 1", UNLESS OTHERWISE SPECIFIED.  
 BAR STEEL REINFORCEMENT SHALL BE IMBEDDED 2" CLEAR UNLESS OTHERWISE SHOWN OR NOTED.  
 THE USE OF STRUCTURAL GRADE BAR STEEL REINFORCEMENT IS PROHIBITED.



PART PLAN



DETAIL OF CENTER WALL

**TOTAL ESTIMATED QUANTITIES**

BID ITEMS	QUANTITY
EXCAVATION FOR STRUCTURE	170 CY
CONCRETE MASONRY	208.10 Y
BAR STEEL REINFORCEMENT	26,550 LBS

**LIST OF DRAWINGS**

1-DETAILS	X15797
2-DETAILS	X15798

STATE HIGHWAY COMMISSION OF WISCONSIN			
<b>DETAILS</b>			
CON. LA CROSSE	TOWN HAMILTON	STA. 152	STA. 78.00
SECTION 20	TOWN 17 N	RANGE 6 W	
DATE 7-25-56	DESIGNED J.F.F.	REVISION 1951	LOAD H 15
DRAWN BY <i>H.B. Schultz</i>		BRIDGE ENGINEER	
APPROVED BY <i>E.L. Rettig</i>		STATE HIGHWAY ENGINEER	

STRUCTURE B-32-17 SHEET 1 OF 2

X 15797



**BILL OF BARS**

DIMENSIONS IN BENDING DETAILS ARE OUT TO OUT.

26,550 #

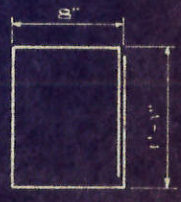
B. F. O. DIVISION	PROJECT	SHEET NO.	TOTAL SHEETS
4	50865(3)	4	4

POUR	MARK	NO.	SIZE	LENGTH	SPACING	LOCATION	DET.
C	1	24	4	24-9	1-0	CUTOFF & APRON	
C	2	8	4	24-6	1-0	APRON	
C	3	8	4	23-3	1-0	"	
C	4	8	4	22-3	1-0	"	
C	5	8	4	21-6	1-0	"	
C	6	8	4	20-6	1-0	"	
C	7	8	4	19-6	1-0	"	
C	8	8	4	18-9	1-0	"	
C	9	8	4	17-9	1-0	"	
C	10	8	4	16-9	1-0	"	
C	11	2	4	30-6	1-0	"	A
C	12	2	4	24-0	1-0	"	A
C	13	2	4	18-0	1-0	"	A
C	14	2	4	15-0	1-0	"	A
C	15	2	4	27-0	1-0	"	A
C	16	2	4	22-6	1-0	"	A
C	17	2	4	16-6	1-0	"	A
C	18	2	4	12-0	1-0	"	A
C	19	4	4	19-0	1-0	"	
C	20	4	4	19-0	1-0	"	A
C	21	10	6	9-3	1-0	WING 2	A
C	22	12	5	8-0	1-0	" 2	A
C	23	10	6	7-3	1-0	" 2	A
C	24	12	5	7-0	1-0	" 2	A
C	25	22	4	6-9	6	" 2	A
C	26	8	4	11-3	1-0	" 2	A
C	27	8	4	10-3	1-0	" 2	A
C	28	8	4	9-3	1-0	" 2	A
C	29	8	4	8-3	1-0	" 2	A
C	30	8	4	7-3	1-0	" 2	A
C	31	16	8	16-9	SHOWN	HEADER	
C	32	16	8	16-9	"	"	
C	33	10	4	4-6	7-6	" STIRRUPS	B
C	34	172	5	2-0	1-6	SIDES	A
C	35	8	6	9-3	1-0	WING 1	A
C	36	6	6	7-0	1-0	" 1	A
C	37	6	5	8-0	1-0	" 1	A
C	38	6	5	7-0	1-0	" 1	A
C	39	16	4	6-9	6	" 1	A
C	40	4	4	11-9	1-0	" 1	A
C	41	4	4	11-0	1-0	" 1	A
C	42	4	4	10-3	1-0	" 1	A
C	43	4	4	9-6	1-0	" 1	A
C	44	4	4	8-9	1-0	" 1	A
C	45	6	4	7-6	1-0	" 1	A
C	46	4	4	23-6	SHOWN	" 1	
C	47	8	4	19-0	"	" 2	
C	48	20	5	4-0	1-0	CONST. JOINT	
C	49	61	6	8-3	1-0	PAVEMENT BOT.	
C	50	60	6	4-3	1-0	"	
C	51	158	6	9-3	9	"	A
C	52	4	4	18-6	SHOWN	"	
C	53	4	4	25-3	"	"	
C	54	8	4	16-6	"	"	
C	55	8	4	21-6	"	"	
C	56	4	4	2-3	7	" BOT.	
C	57	6	4	3-0	7	"	
C	58	6	4	4-3	7	"	
C	59	6	5	5-6	7	"	
C	60	6	5	7-0	7	"	
C	61	6	6	8-6	7	"	
C	62	6	6	9-6	7	"	
C	63	12	6	7-6	1-2	"	
C	64	4	6	11-6	1-2	"	
C	65	4	6	13-3	1-2	"	
C	66	4	6	15-0	1-2	"	
C	67	4	6	15-0	1-2	"	
C	68	4	6	15-0	1-2	"	
C	69	4	6	16-9	1-2	"	
C	70	4	6	18-6	1-2	"	
C	71	12	4	22-3	SHOWN	"	
C	72	12	4	20-6	"	"	
C	73	12	4	18-6	"	"	
C	74	8	4	16-9	"	"	
C	75	8	4	27-9	"	"	
C	76	6	4	23-0	"	"	
C	77	6	4	19-9	"	"	
C	102	3	2	17-0	1-2	"	
C	103	3	4	19-6	1-2	"	

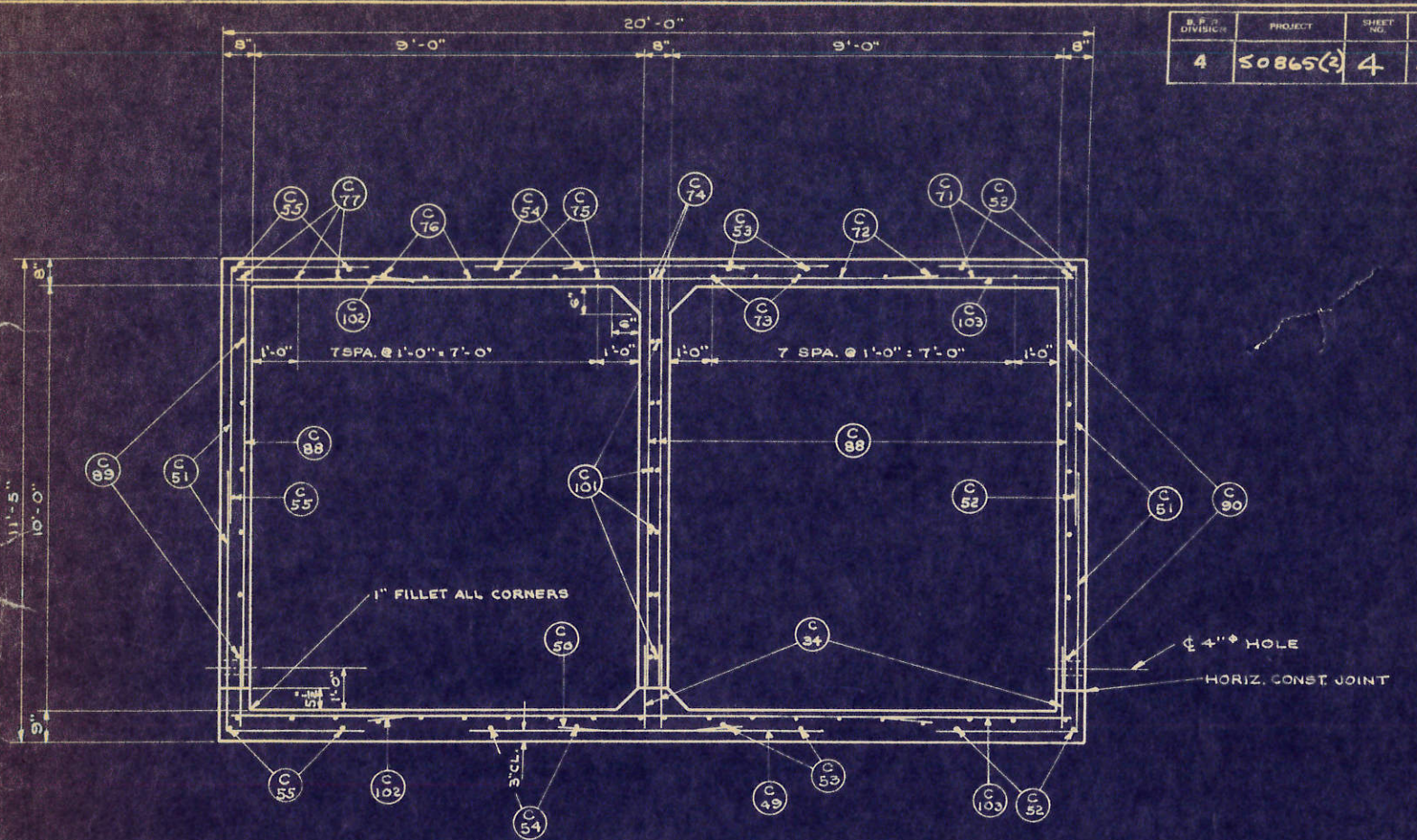
POUR	MARK	NO.	SIZE	LENGTH	SPACING	LOCATION	DET.
C	76	6	4	23-0	SHOWN	PAVEMENT TOP	
C	77	6	4	19-9	"	"	
C	102	3	2	17-0	1-2	"	
C	103	3	4	19-6	1-2	"	
C	78	14	4	8-0	1-0	WING 1	
C	79	4	4	7-9	1-0	" 1	
C	80	4	4	6-9	1-0	" 1	
C	81	2	4	25-3	1-0	" 1	
C	82	2	4	23-0	1-0	" 1	
C	83	2	4	19-0	1-0	" 1	
C	84	2	4	15-3	1-0	" 1	
C	85	2	4	11-6	1-0	" 1	
C	86	2	4	7-9	1-0	" 1	
C	87	4	4	25-0	SHOWN	" 1	
C	88	172	5	10-0	1-6	SIDES	
C	89	24	4	24-0	1-6	"	
C	90	12	4	20-0	1-6	"	
C	91	22	4	8-0	1-0	WING 2	
C	92	6	4	7-9	1-0	" 2	
C	93	6	4	7-0	1-0	" 2	
C	94	4	4	20-0	1-6	" 2	
C	95	4	4	18-3	1-6	" 2	
C	96	2	4	29-3	1-6	" 2	
C	97	2	4	23-3	1-6	" 2	
C	98	2	4	17-6	1-6	" 2	
C	99	2	4	11-6	1-6	" 2	
C	100	4	4	19-6	SHOWN	" 2	
C	101	4	4	17-0	1-6	CENTER WALL	
C	91	16	8	16-9	SHOWN	HEADER	
C	32	16	8	16-9	"	"	
C	33	10	4	4-6	7-6	" STIRRUPS	B
C	48	50	5	4-0	1-0	CONST. JOINT	
C	49	61	6	8-3	1-0	FLOOR TOP	
C	50	60	6	4-3	1-0	"	
C	51	158	6	9-3	9	"	A
C	52	6	4	18-6	SHOWN	"	
C	53	4	4	25-3	"	"	
C	54	8	4	16-6	"	"	
C	55	12	4	21-6	"	"	
C	56	4	4	2-3	7	" BOT.	
C	57	6	4	3-0	7	"	
C	58	6	4	4-3	7	"	
C	59	6	5	5-6	7	"	
C	60	6	5	7-0	7	"	
C	61	6	6	8-6	7	"	
C	62	6	6	9-6	7	"	
C	63	12	6	7-6	1-2	"	
C	64	4	6	11-6	1-2	"	
C	65	4	6	13-3	1-2	"	
C	66	4	6	15-0	1-2	"	
C	67	4	6	15-0	1-2	"	
C	68	4	6	16-6	1-2	"	
C	69	4	6	16-9	1-2	"	
C	70	4	6	18-6	1-2	"	
C	71	12	4	22-3	SHOWN	"	
C	72	12	4	20-6	"	"	
C	73	12	4	18-6	"	"	
C	74	8	4	16-9	"	"	
C	75	8	4	27-9	"	"	
C	76	6	4	23-0	"	"	
C	77	6	4	19-9	"	"	
C	102	3	2	17-0	1-2	"	
C	103	3	4	19-6	1-2	"	

4'-2"	"C11" TO "C18" INCL.
4'-6"	"C20" TO "C30" INCL.
4'-6"	"C35" TO "C45" INCL.
3'-3"	"C51"

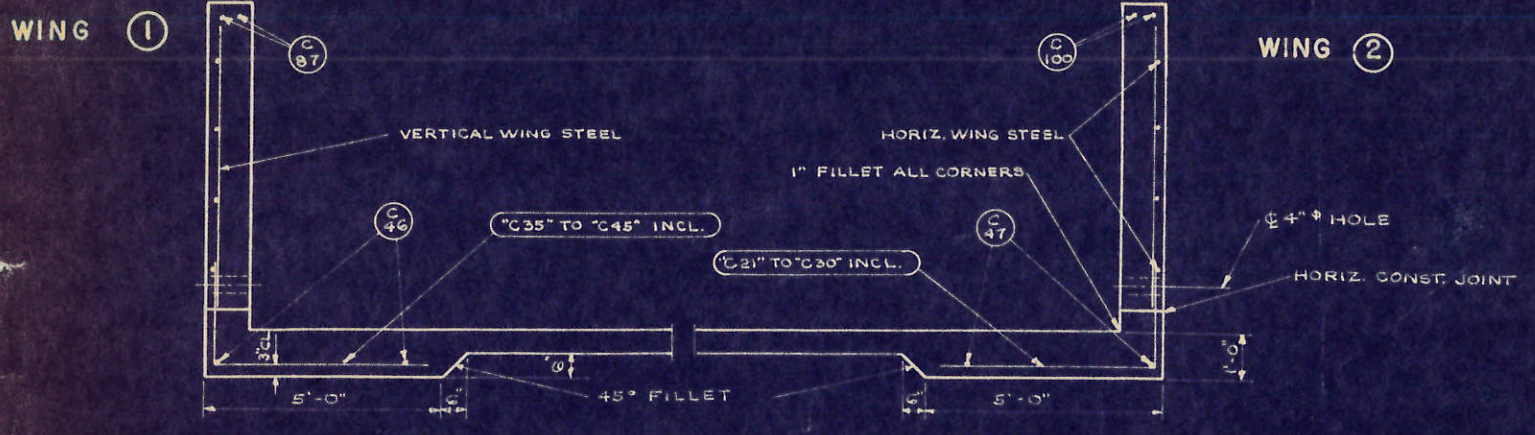
DETAIL A



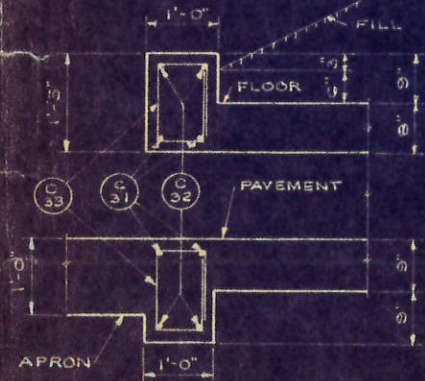
DETAIL B



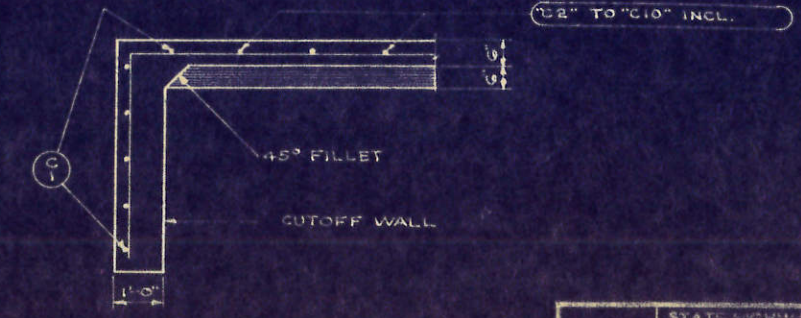
SECTION C2



SECTION THRU WINGS



SECTION C3



SECTION C4

STATE HIGHWAY COMMISSION OF WISCONSIN

**DETAILS**

DATE: 7/25/56 DRAWN: E.D. CHECKED: J.F.F. REV. 1951 SCALE: H16

STRUCTURE: **B-32-17** SHEET: **2 OF 2**

**X15798**