

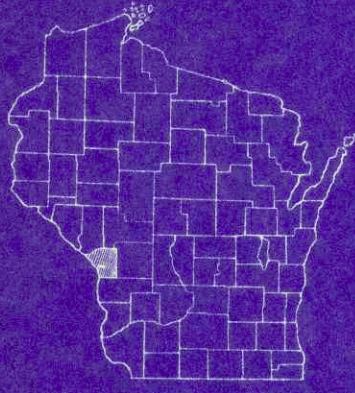
COUNTY AND HIGHWAY	ROUTE AND SECTION	CLASS AND AGREEMENT		FEDERAL DIVISION OFFICE	SHEET NUMBER	TOTAL SHEETS
		STATE	FEDERAL			
32.6	123.0		11.13	WIS 4	1	4

**INDEX OF SHEETS**

SHEET NO.	TITLE
1	TITLE
2	TYPICAL CROSS SECTIONS
2	ESTIMATE OF QUANTITIES
—	MISCELLANEOUS QUANTITIES
—	RIGHT OF WAY PLAT
3	PLAN AND PROFILE STA. -2+00 TO STA. 21+71.8
4	STANDARD DETAILS
—	DRAINAGE STRUCTURES
—	CROSS SECTIONS

**STATE OF WISCONSIN**  
**STATE HIGHWAY COMMISSION OF WISCONSIN**

PLAN AND PROFILE OF PROPOSED  
**U.S.H. 16 - WEST SALEM ROAD**  
 C.T.H. "B"  
 LA CROSSE COUNTY  
 PROJECT S 0123 (13)

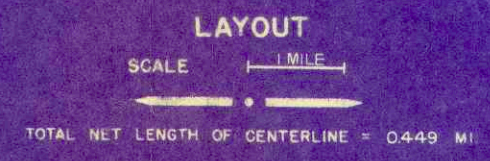


**SCALES** PLAN 1 IN. = 100 FT.  
 PROFILE HOR. 1 IN. = 100 FT. VERT. 1 IN. = 10 FT.  
 CROSS SECTIONS HOR. 1 IN. = 100 FT. VERT. 1 IN. = 10 FT.



**CONVENTIONAL SIGNS**

STATE LINE	— — — — —	CULVERTS IN PLACE	— — — — —
COUNTY LINE	— — — — —	CULVERTS REQUIRED	— — — — —
TOWNSHIP OR RANGE LINE	— — — — —	DROP INLET	— — — — —
SECTION LINE	— — — — —	POWER POLE	— — — — —
NEW RIGHT OF WAY LINE	— — — — —	TELEPHONE OR TELEGRAPH POLE	— — — — —
PRESENT RIGHT OF WAY LINE	— — — — —	RIGHT OF WAY MARKERS	— — — — —
WIRE FENCE	— — — — —	REFERENCE STAKE FOR HUBS ONLY	— — — — —
WOVEN	— — — — —	MARSH	— — — — —
BARBED	— — — — —	HEDGE	— — — — —
LOT LINE	— — — — —	TREES	— — — — —
CORPORATE OR CITY LIMITS	— — — — —	GROUND ELEVATION	DATUM LINE 7516 75.9
PROPERTY LINE	— — — — —	GRADE ELEVATION	DATUM LINE 7516 75.9
TRAVELED WAY OR P.E.	— — — — —		
RAILROADS	— — — — —		
BASE OR SURVEY LINE	— — — — —		



APPROVED FOR LA CROSSE COUNTY BY  
 DATE 4-8-59  
 COMMISSIONER

STATE HIGHWAY  
 COMMISSION OF WISCONSIN  
 MADISON, WIS.

SURVEYOR LA CROSSE CO. DIST. BOOK 186  
 DIVISION COMPUTER J.W.C. M.G. CHECKER  
 DISTRICT CHECKER R.C.J. CORRECT

CORRECT  
 DATE 4-15-59  
 ACTING DISTRICT ENGINEER

RECOMMENDED FOR APPROVAL  
 DATE 4-22-59  
 ENGINEER OF DESIGN

APPROVED  
 DATE 4/24/59  
 STATE HIGHWAY ENGINEER

DEPARTMENT OF COMMERCE  
 BUREAU OF PUBLIC ROADS

APPROVED \_\_\_\_\_ DATE \_\_\_\_\_  
 DIVISION ENGINEER

S 0123 (13)





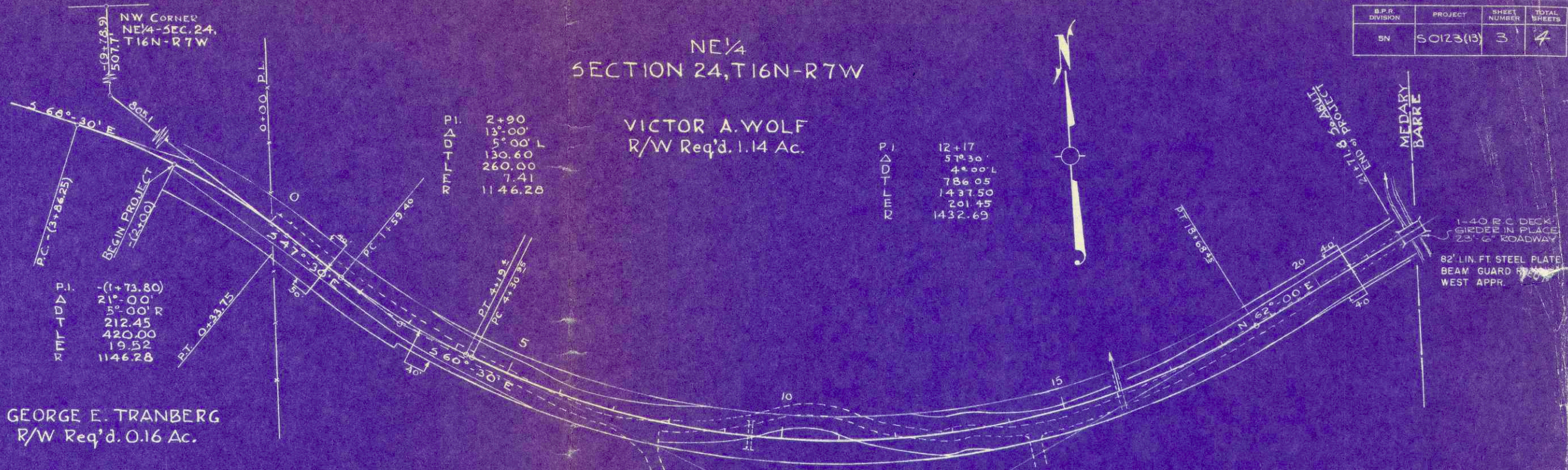


B.P.R. DIVISION	PROJECT	SHEET NUMBER	TOTAL SHEETS
5N	50123(13)	3	4

NE 1/4  
SECTION 24, T16N-R7W

VICTOR A. WOLF  
R/W Req'd. 1.14 Ac.

GEORGE E. TRANBERG  
R/W Req'd. 0.16 Ac.

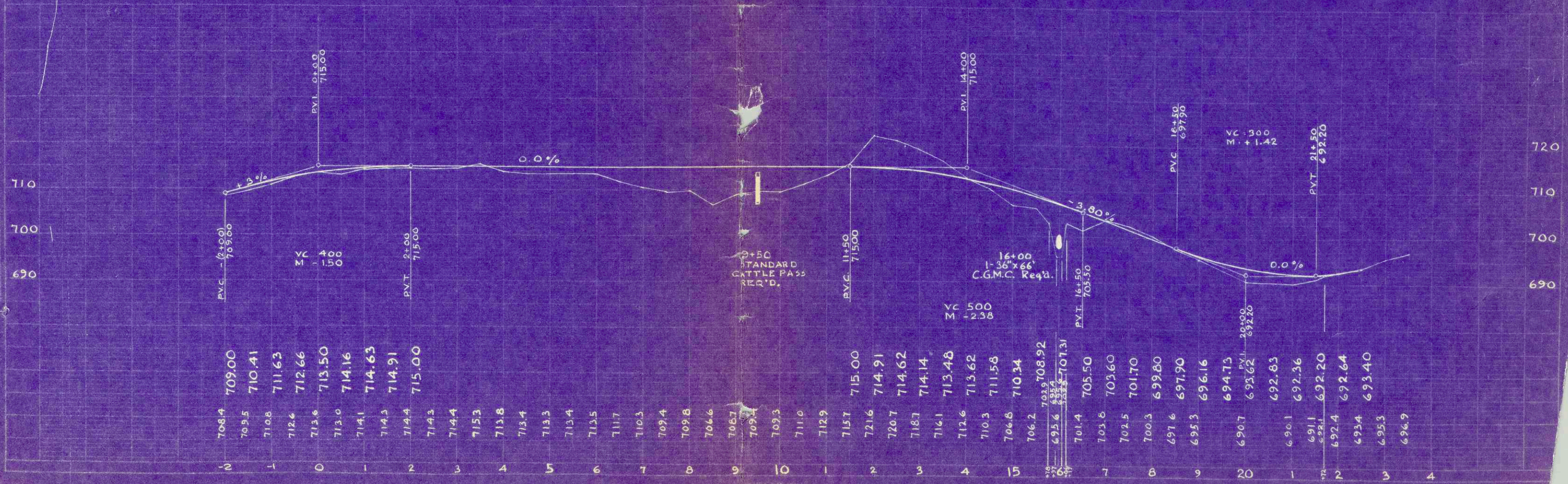


P.I. 2+90  
13° 00' L  
5° 00' L  
130.60  
260.00  
7.41  
1146.28

P.I. 12+17  
57° 30' L  
4° 00' L  
786.05  
1437.50  
201.45  
1432.69

P.I. -1+73.80  
21° 00' R  
5° 00' R  
212.45  
420.00  
19.52  
1146.28

J.S. MADARY  
3-2158  
544-58  
186



10+50  
STANDARD  
CATTLE PASS  
REQ'D.

16+00  
1-36"x66"  
C.G.M.C. Req'd.

VC 300  
M +1.42

VC 500  
M +2.38