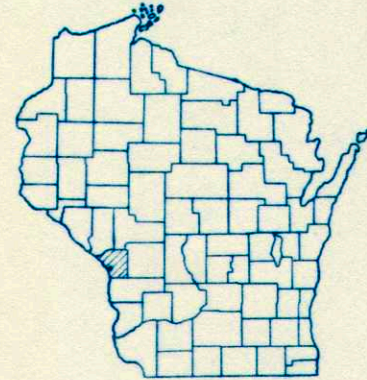


COUNTY AND HIGHWAY	ROUTE AND SECTION	CLASS AND AGREEMENT		FEDERAL DIVISION OFFICE	SHEET NUMBER	TOTAL SHEETS
		STATE	FEDERAL			
32.1	8-3		12.33	WIS. 5N	1	22

INDEX OF SHEETS

- SHEET NO. 1 TITLE
- SHEET NO. 2 TYPICAL CROSS SECTIONS
- SHEET NO. 2 ESTIMATE OF QUANTITIES
- SHEET NO. 3 MISCELLANEOUS QUANTITIES
- SHEET NO. 4 RIGHT OF WAY PLAT
- SHEET NO. 5 & 6 PLAN AND PROFILE STA. 1+00 TO STA. 12+20.5
- SHEET NO. 7-13 STANDARD DETAILS
- SHEET NO. - DRAINAGE STRUCTURES
- SHEET NO. 14-22 CROSS SECTIONS



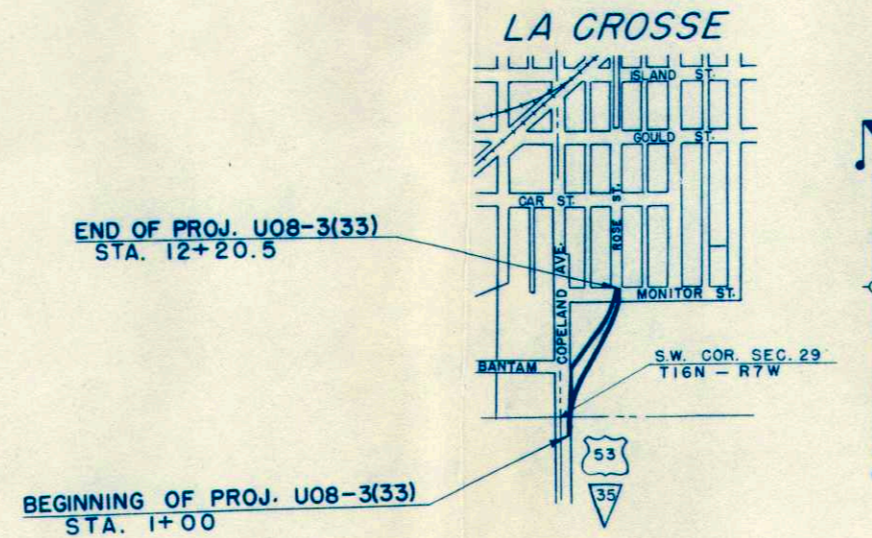
STATE OF WISCONSIN
STATE HIGHWAY COMMISSION OF WISCONSIN

PLAN AND PROFILE OF PROPOSED
COPELAND AVENUE RELOCATION

CITY OF LA CROSSE
LA CROSSE COUNTY
PROJECT U 08-3(33)
U.S.H. 53 & S.T.H. 35

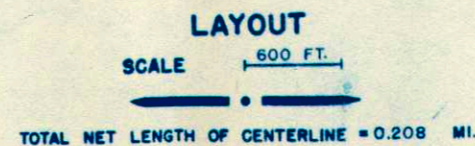
BEGINNING AT A POINT ON COPELAND AVENUE 200 FEET SOUTH OF THE SW CORNER OF SEC 29, T 16 N - R 7 W AND EXTENDING NORTHEASTERLY TO THE INTERSECTION OF ROSE STREET WITH THE NORTH LINE OF MONITOR STREET.

PLAN 1 IN. = 20 FT.
PROFILE HOR. 1 IN. = 20 FT. VERT. 1 IN. = 5 FT.
CROSS SECTIONS HOR. 1 IN. = 5 FT. VERT. 1 IN. = 2 FT.



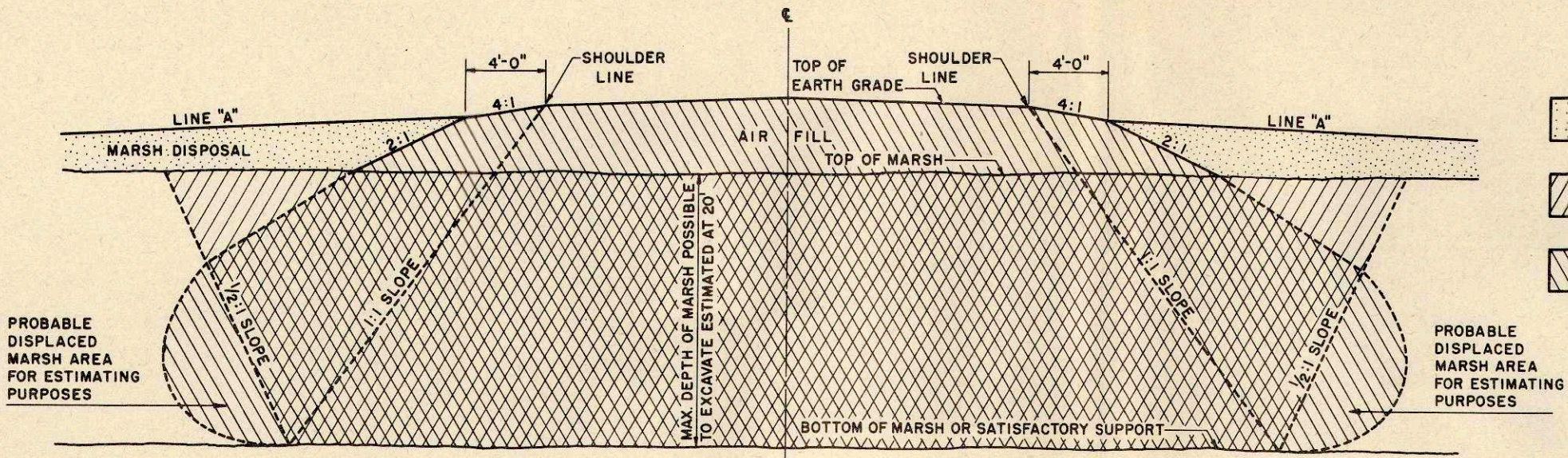
CONVENTIONAL SIGNS

- | | | | |
|---------------------------|-------|-------------------------------|-------|
| STATE LINE | ----- | CULVERTS IN PLACE | ----- |
| COUNTY LINE | ----- | CULVERTS REQUIRED | ----- |
| TOWNSHIP OR RANGE LINE | ----- | DROP INLET | ----- |
| SECTION LINE | ----- | POWER POLE | ----- |
| NEW RIGHT OF WAY LINE | ----- | TELEPHONE OR TELEGRAPH POLE | ----- |
| PRESENT RIGHT OF WAY LINE | ----- | RIGHT OF WAY MARKERS | ----- |
| WIRE FENCE | ----- | REFERENCE STAKE FOR HUBS ONLY | ----- |
| WOVEN | ----- | MARSH | ----- |
| BARBED | ----- | HEDGE | ----- |
| LOT LINE | ----- | TREES | ----- |
| CORPORATE OR CITY LIMITS | ----- | | |
| PROPERTY LINE | ----- | | |
| TRAVELED WAY OR R.E. | ----- | | |
| RAILROADS | ----- | | |
| BASE OR SURVEY LINE | ----- | | |






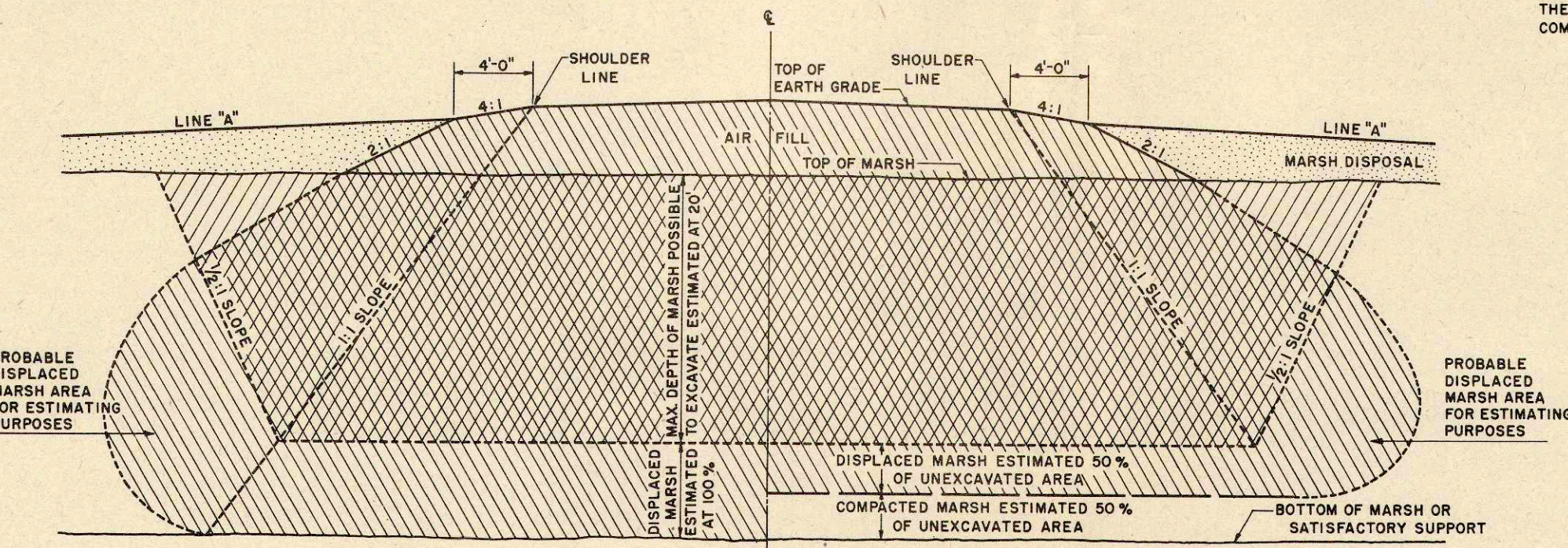
STATE HIGHWAY COMMISSION OF WISCONSIN MADISON, WIS.		DEPARTMENT OF COMMERCE BUREAU OF PUBLIC ROADS	
SURVEYOR: F.K.	NOTE BOOK: LL	RECOMMENDED FOR APPROVAL:	
DIVISION COMPUTER: J.W.J.	M. O. CHECKER	DISTRICT ENGINEER DATE	
DIVISION CHECKER: R.G.J.	CORRECT	APPROVED:	
CORRECT:		DIVISION ENGINEER DATE	
DATE: 7/8/52	T.M. Reynolds		
	REGIONAL ENGINEER		
DATE: 7/15/52	E.C. Rostig		
	STATE HIGHWAY ENGINEER		

U08-3(33)



COMPLETE MARSH EXCAVATION

-  MARSH DISPOSAL PERMITTED IN THIS AREA UNLESS OTHERWISE PROVIDED IN THE CONTRACT
-  EXCAVATION
-  BACKFILL





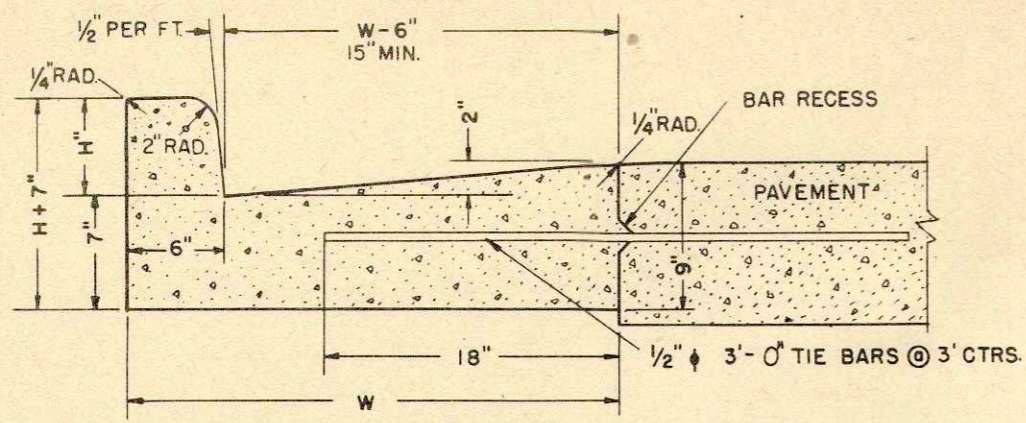
PARTIAL EXCAVATION PLUS 100% DISPLACEMENT

PARTIAL EXCAVATION PLUS 50% DISPLACEMENT

GENERAL NOTES

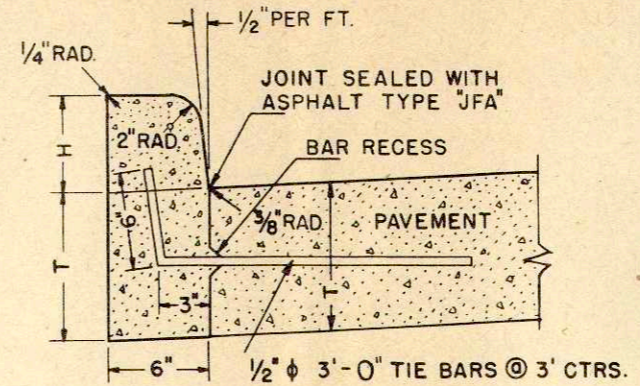
DETAILS OF CONSTRUCTION NOT SHOWN SHALL CONFORM TO THE PERTINENT REQUIREMENTS OF THE STANDARD SPECIFICATIONS AND THE APPLICABLE SPECIAL PROVISIONS.
 ANY MATERIAL TEMPORARILY PLACED ABOVE THE LINE MARKED "LINE A" IS TO BE REMOVED UPON COMPLETION OF THE AIR FILL.

MARSH EXCAVATION	
STATE HIGHWAY COMMISSION OF WISCONSIN	
RECOMMENDED FOR APPROVAL:	
DATE <u>2/11/52</u>	 CONSTRUCTION ENGINEER
APPROVED:	
DATE <u>2/11/52</u>	 STATE HIGHWAY ENGINEER
DRAWN LJD	CHECKED



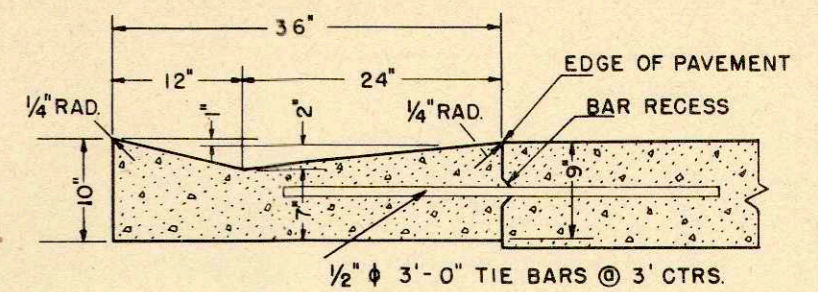
NOTE - "H" SHALL BE 6" UNLESS OTHERWISE INDICATED ON PLAN OR PROFILES.
MAX. VALUE OF "H" = 9" - MIN. VALUE OF "H" = 3 1/2"

TYPE A
COMBINATION CURB AND GUTTER



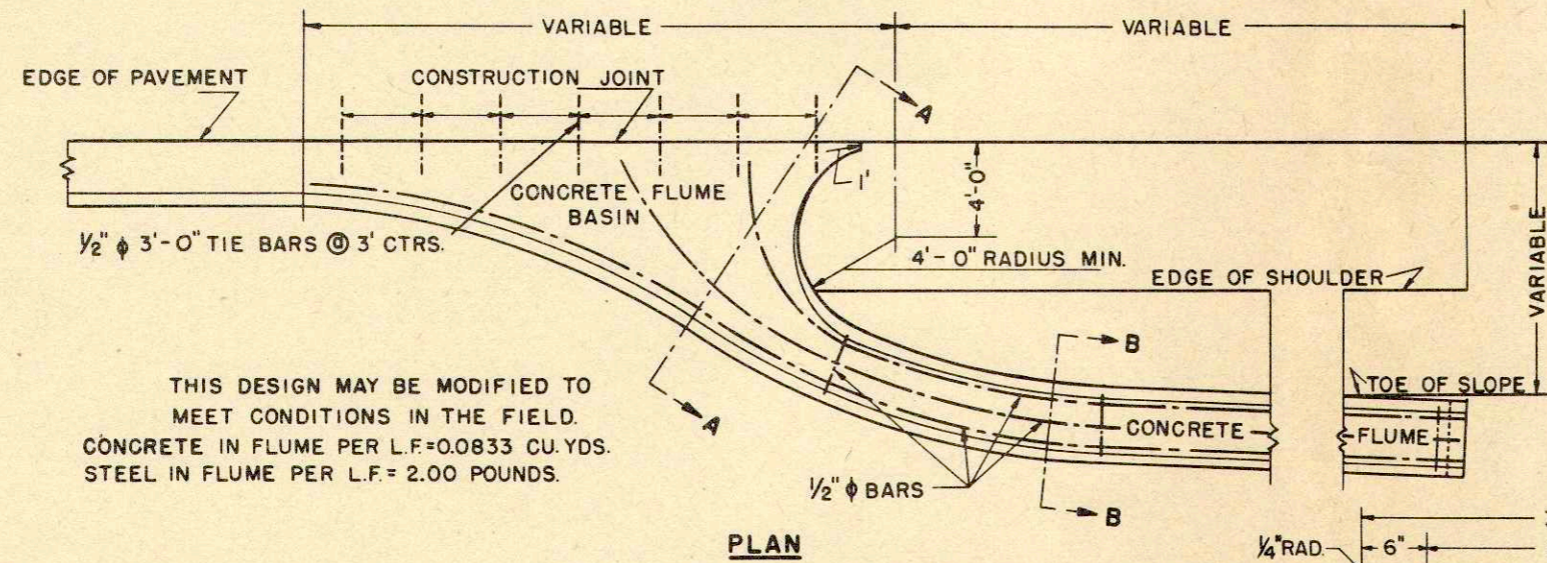
NOTE - "H" SHALL BE 6" UNLESS OTHERWISE INDICATED ON PLAN OR PROFILES.
MAX. VALUE OF "H" = 9" - MIN. VALUE OF "H" = 3 1/2"

TYPE B
CONCRETE CURB



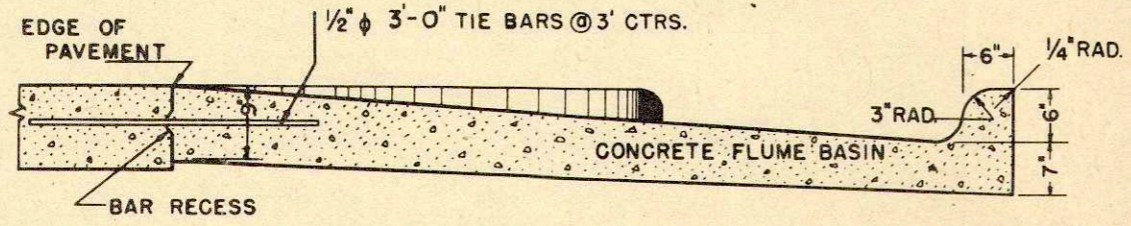
CONCRETE PER L.F. = 0.0756 CU. YDS.

TYPE C
CONCRETE GUTTER

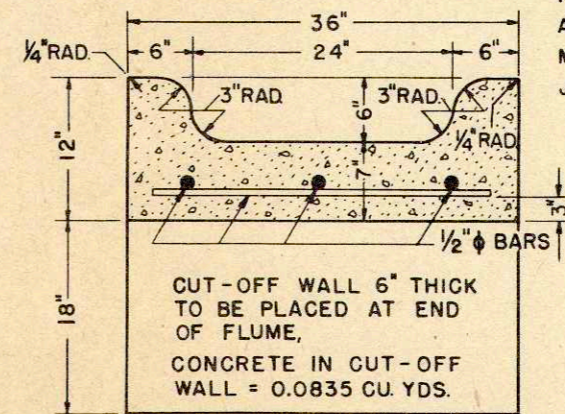


THIS DESIGN MAY BE MODIFIED TO MEET CONDITIONS IN THE FIELD.
CONCRETE IN FLUME PER L.F. = 0.0833 CU. YDS.
STEEL IN FLUME PER L.F. = 2.00 POUNDS.

PLAN

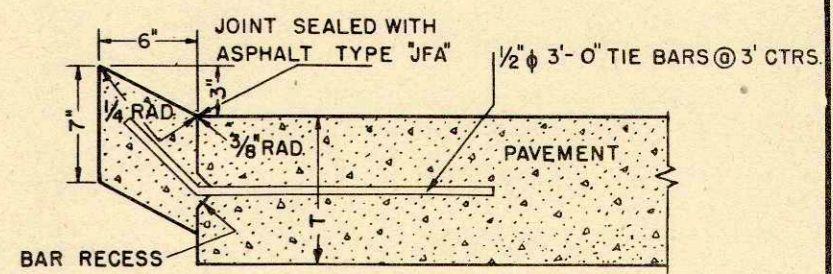


SECTION A-A



CUT-OFF WALL 6" THICK TO BE PLACED AT END OF FLUME,
CONCRETE IN CUT-OFF WALL = 0.0835 CU. YDS.

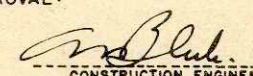

SECTION B-B



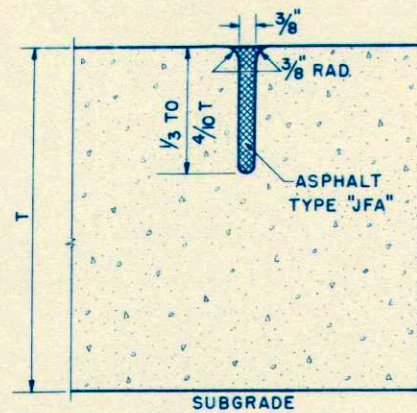
TYPE D
CONCRETE CURB (RURAL)

GENERAL CONSTRUCTION NOTES

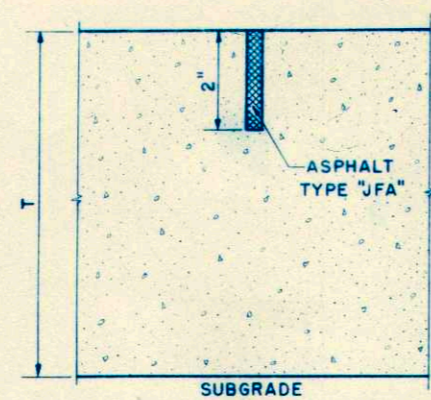
DETAILS OF CONSTRUCTION NOT SHOWN SHALL BE IN ACCORDANCE WITH THE PERTINENT REQUIREMENTS OF THE STANDARD AND THE PERTINENT SPECIFICATIONS.
CURB AND CURB AND GUTTER TO HAVE SEPARATOR PLATE JOINTS NOT LESS THAN 6' NOR MORE THAN 10' APART, WITH A JOINT IN LINE WITH EACH ADJACENT PAVEMENT CONTRACTION JOINT IN ADDITION TO EXPANSION JOINTS AS REQUIRED BY THE STANDARD SPECIFICATIONS.

STANDARD DESIGN	
CONCRETE CURB, GUTTER, COMBINATION CURB & GUTTER, SURFACE DRAIN	
STATE HIGHWAY COMMISSION OF WISCONSIN	
RECOMMENDED FOR APPROVAL:	
 CONSTRUCTION ENGINEER	
APPROVED :	
DATE :	
DRAWN BY : D.V.D.	
CHECKED BY :	
 STATE HIGHWAY ENGINEER	

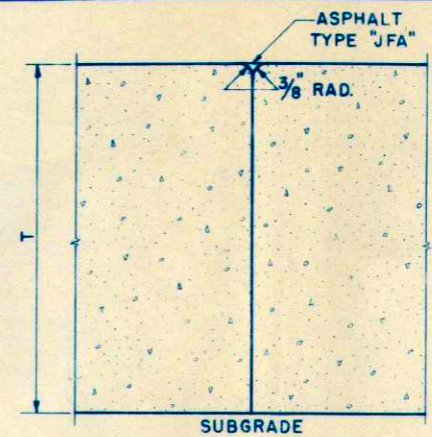
INLET OR DISCHARGE FOR STANDARD CURB AND GUTTER SURFACE DRAIN.



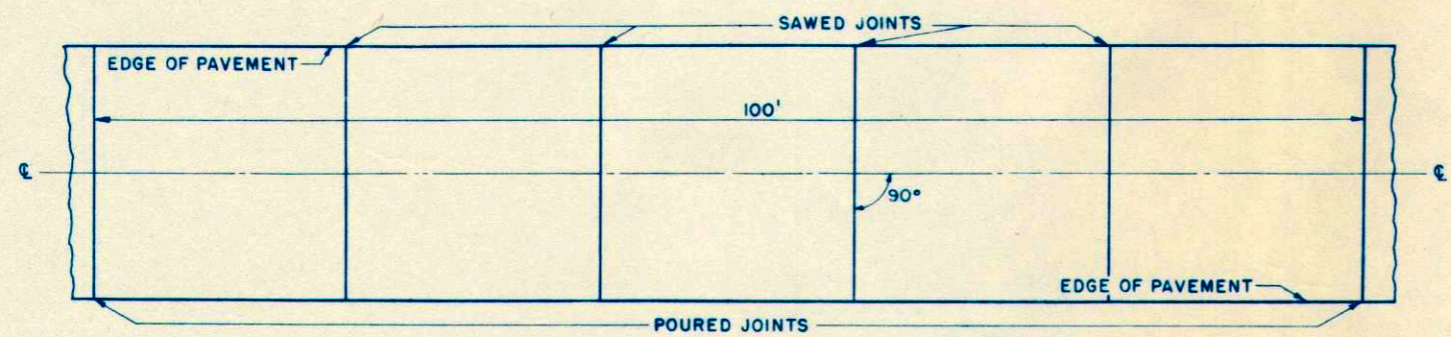
POURED JOINT



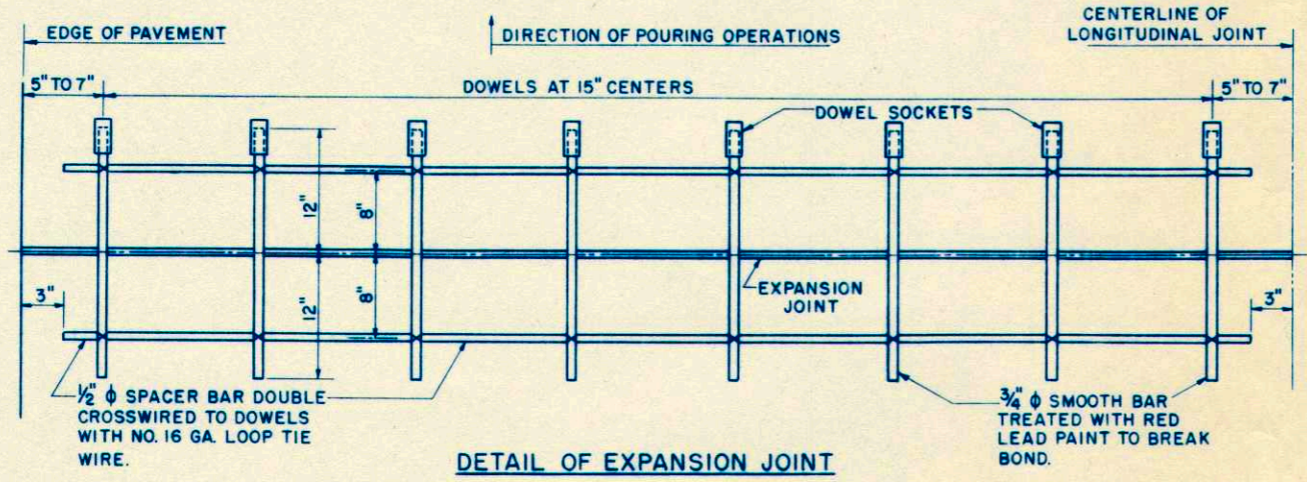
SAWED JOINT



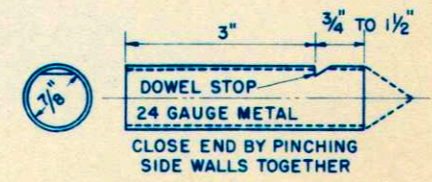
CONSTRUCTION JOINT



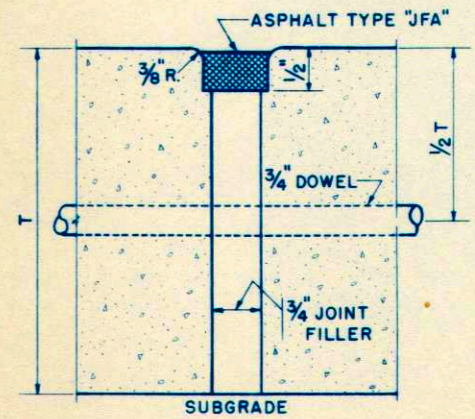
DETAIL SHOWING LAYOUT OF TRANSVERSE CONTRACTION JOINTS



DETAIL OF EXPANSION JOINT



DOWEL SOCKET DETAIL



**EXPANSION JOINT
PREFABRICATED**

GENERAL NOTES

DETAILS OF CONSTRUCTION NOT SHOWN SHALL CONFORM TO THE PERTINENT REQUIREMENTS OF THE STANDARD SPECIFICATIONS AND THE APPLICABLE SPECIAL PROVISIONS.

CONSTRUCTION NOTES-CONTRACTION JOINTS

TRANSVERSE CONTRACTION JOINTS, EXCEPT WHERE COINCIDENT WITH TRANSVERSE CONSTRUCTION OR EXPANSION JOINTS, SHALL BE INSTALLED AT NOT TO EXCEED TWENTY (20) FOOT INTERVALS.

IN SAWING JOINTS WATER SHALL BE SPRAYED ON THE SAW BLADES AT ALL TIMES DURING CUTTING. A SUITABLE STATIONARY GUIDE SHALL BE USED TO PREVENT SIDE SWAY AND INSURE CUTTING ON A STRAIGHT LINE. JOINTS SHALL BE SAWED NOT EARLIER THAN TWELVE (12) HOURS NOR LATER THAN SEVEN (7) DAYS AFTER THE CONCRETE HAS BEEN PLACED. IN THE EVENT TRANSVERSE CRACKS SHOULD DEVELOP PRIOR TO THE INSTALLATION OF SAWED TRANSVERSE CONTRACTION JOINTS, OR AT STREET INTERSECTIONS OR OTHER DESIGNATED LOCATION OF TRANSVERSE EXPANSION JOINTS, THE NORMAL TWENTY (20) FOOT SPACING OF CONTRACTION JOINTS SHALL BE VARIED SO AS TO AVOID FORMATION OF INDIVIDUAL SLABS HAVING INITIAL LENGTHS OF LESS THAN ABOUT TWELVE (12) FEET.

"POURED TRANSVERSE CONTRACTION JOINTS" AND "SAWED TRANSVERSE CONTRACTION JOINTS" SHALL EACH BE MEASURED FOR PAYMENT BY THE JOINT UNIT COMPLETE IN PLACE, AND THE QUANTITIES TO BE PAID FOR SHALL BE THE SUMMATION OF UNITS COMPLETED AND ACCEPTED.

"POURED TRANSVERSE CONTRACTION JOINTS" AND "SAWED TRANSVERSE CONTRACTION JOINTS," MEASURED AS PROVIDED ABOVE, SHALL EACH BE PAID FOR AT THE RESPECTIVE CONTRACT UNIT PRICE PER JOINT, WHICH PRICE SHALL BE FULL COMPENSATION FOR FURNISHING ALL MATERIALS, LABOR, EQUIPMENT, TOOLS AND INCIDENTALS NECESSARY TO COMPLETE THE WORK, INCLUDING THE SEALING OF THE JOINTS.

CONSTRUCTION NOTES-EXPANSION JOINTS

EXPANSION JOINTS REQUIRED ONLY AT BRIDGE APPROACHES AND WHERE SPECIFICALLY REQUIRED BY PLANS. USE ONLY PREFORMED RESILIENT JOINTS. SELF EXPANDING CORK, FIBER OR CORK TYPE.

**TRANSVERSE JOINTS
CONCRETE PAVEMENT**

STATE HIGHWAY COMMISSION OF WISCONSIN

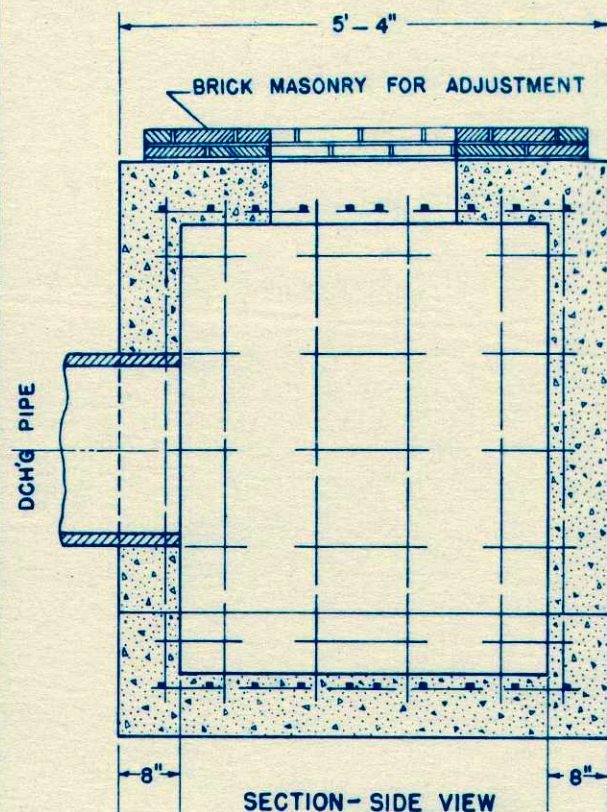
RECOMMENDED FOR APPROVAL:

DATE 3/14/52 *W. Bluk*
CONSTRUCTION ENGINEER

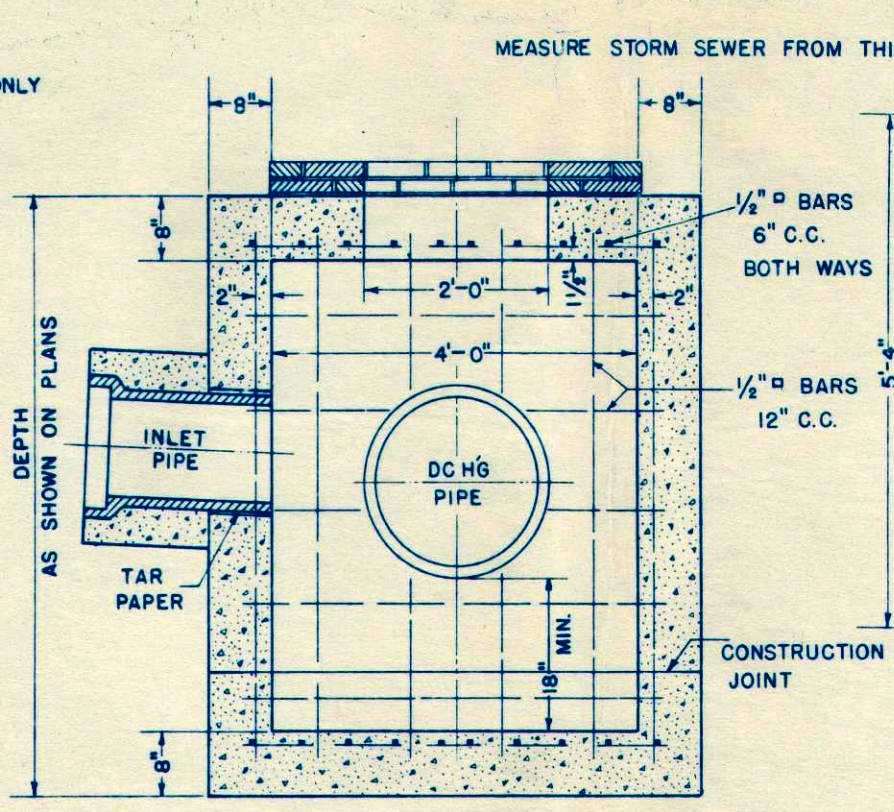
APPROVED:

DATE 3/14/52 *E. L. Rosty*
STATE HIGHWAY ENGINEER

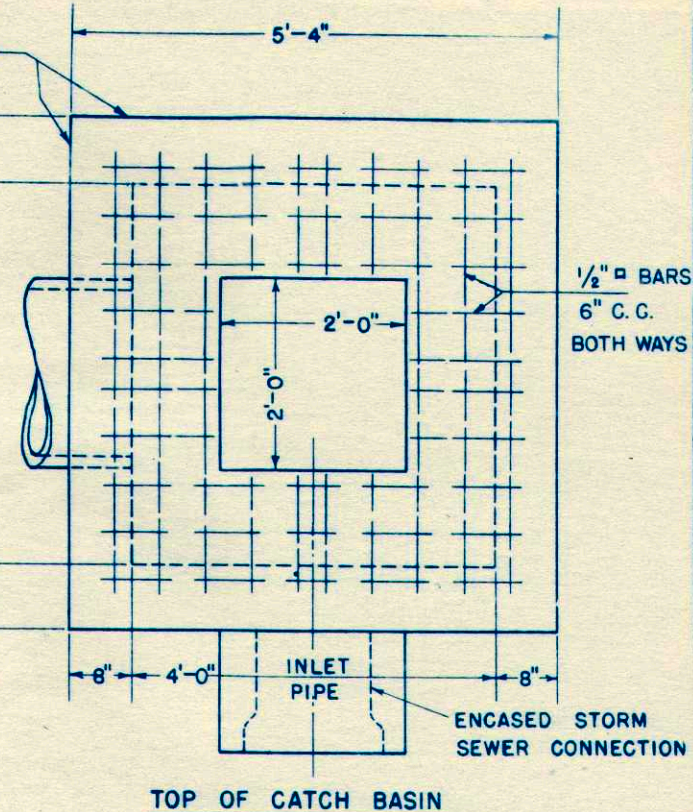
DRAWN LJD
CHECKED



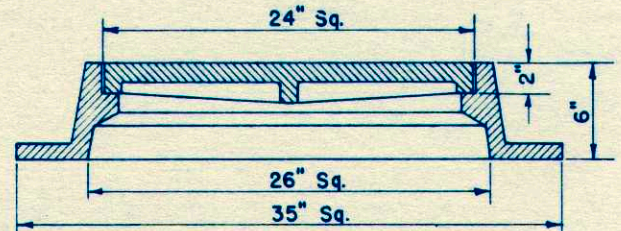
SECTION - SIDE VIEW



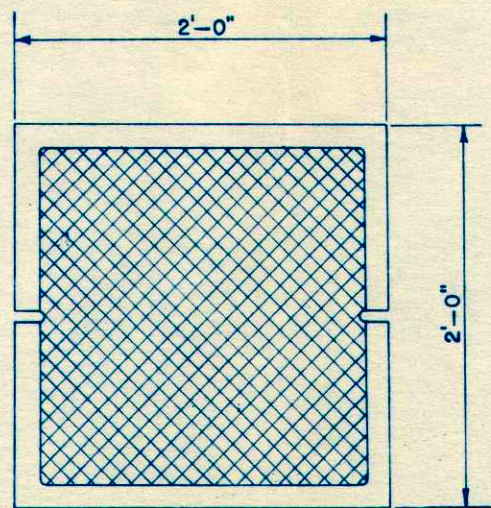
SECTION - END VIEW



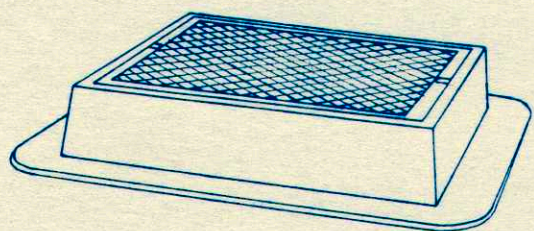
TOP OF CATCH BASIN



TRANSVERSE SECTION



LID



ASSEMBLY VIEW

CONSTRUCTION NOTES

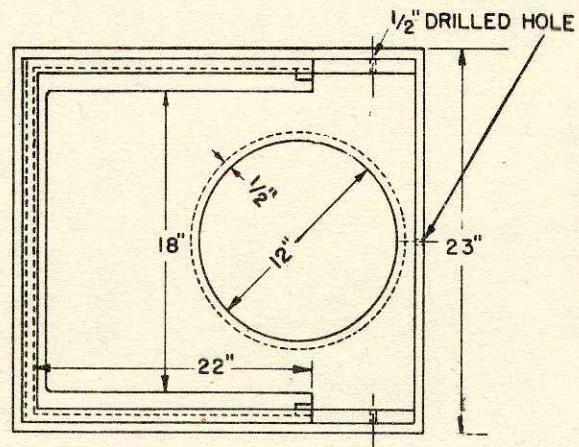
DETAILS OF CONSTRUCTION NOT SHOWN SHALL CONFORM TO THE PERTINENT REQUIREMENTS OF THE STANDARD SPECIFICATIONS AND THE APPLICABLE SPECIAL PROVISIONS.

TYPE E CATCH BASIN SHALL INCLUDE FRAME, LIDS, CONCRETE, PIPES AND BRICK MASONRY.

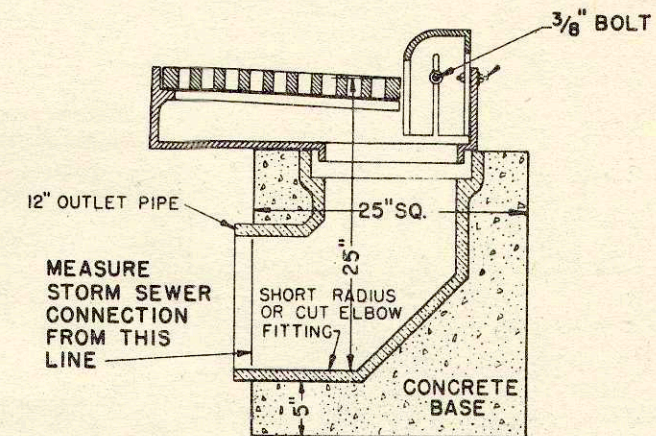
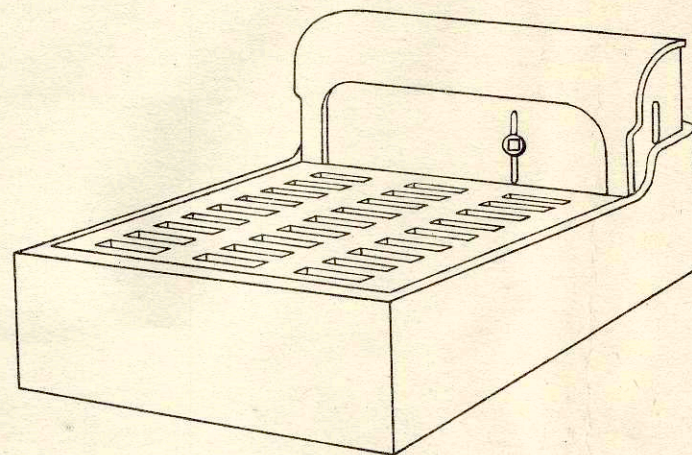
VARIATIONS IN DIMENSIONS AND DESIGN WILL BE PERMISSIBLE PROVIDING EQUIVALENT CAPACITY AND STRENGTH ARE ATTAINED.

ARRANGEMENT AND NUMBER OF INLETS AND DISCHARGE PIPES SHALL CONFORM TO THE NEEDS OF THE PERTINENT LOCATION.

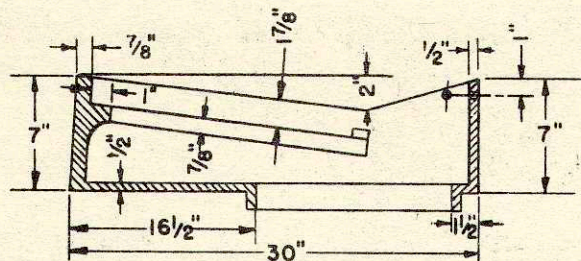
CATCH BASIN TYPE "E"	
STATE HIGHWAY COMMISSION OF WISC.	
RECOMMENDED FOR APPROVAL:	
<i>Frank Crav</i> DESIGN ENGINEER	
<i>M. J. ...</i> CONSTRUCTION ENGINEER	
APPROVED OCT. 1, 1945	
DRAWN	<i>Z. B. ...</i>
CHECKED BY	STA. ...



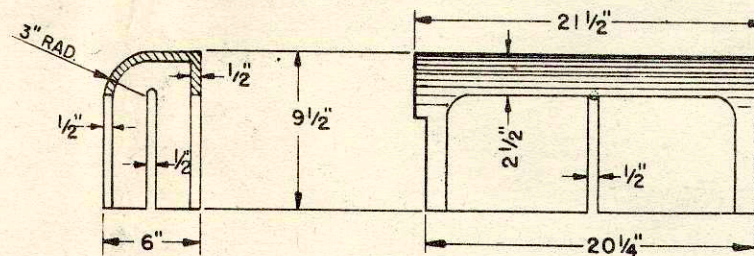
TOP VIEW OF
TYPE "A" FRAME



ASSEMBLY SECTION OF
GRATE, FRAME, & BOX
TYPE "A"



SIDE SECTION OF
TYPE "A" FRAME
WEIGHT 260 LBS. MIN.



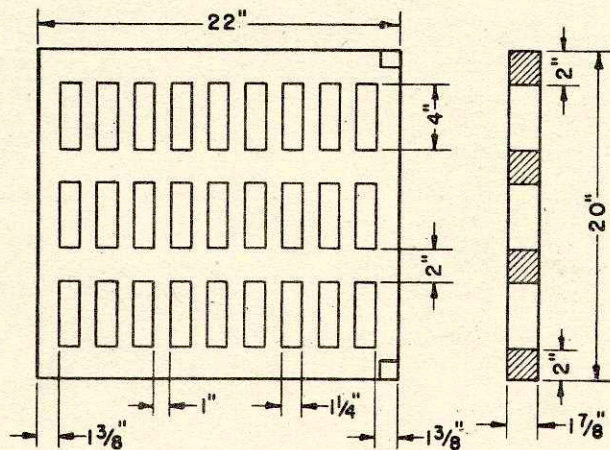
SIDE SECTION
OF BOX

ELEVATION OF BOX

ADJUSTABLE 5" TO FIT
4" TO 9" CURBS

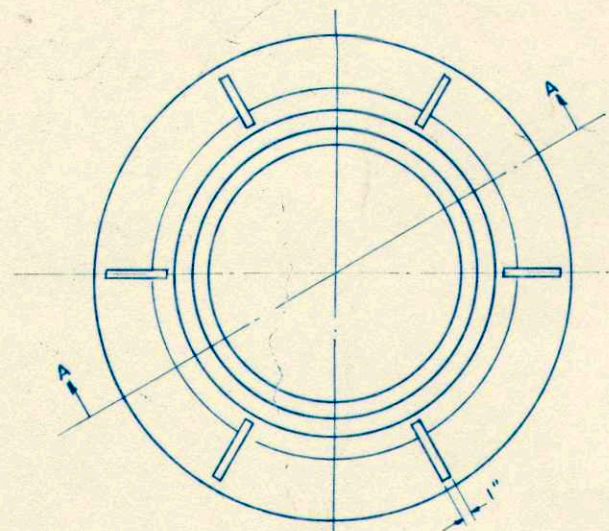
CONSTRUCTION NOTES

DETAILS OF CONSTRUCTION NOT SHOWN SHALL CONFORM TO THE PERTINENT REQUIREMENTS OF THE STANDARD SPECIFICATIONS AND THE APPLICABLE SPECIAL PROVISIONS. VARIATIONS IN DIMENSIONS AND DESIGN WILL BE PERMISSABLE PROVIDING EQUIVALENT CAPACITY AND STRENGTH ARE ATTAINED. TYPE A INLET SHALL INCLUDE FRAME, GRATE, CURB BOX, OUTLET PIPE & CONCRETE BASE. ADJUST CURB BOX FOR HEIGHT AFTER CURB FORM IS IN PLACE.

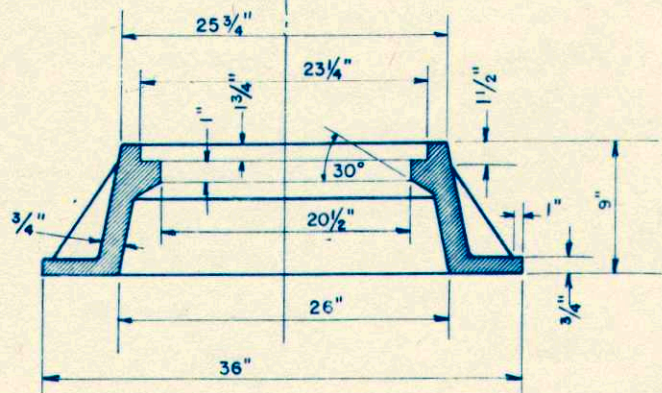


TYPE "A" GRATE
WEIGHT 150 LBS. MIN.

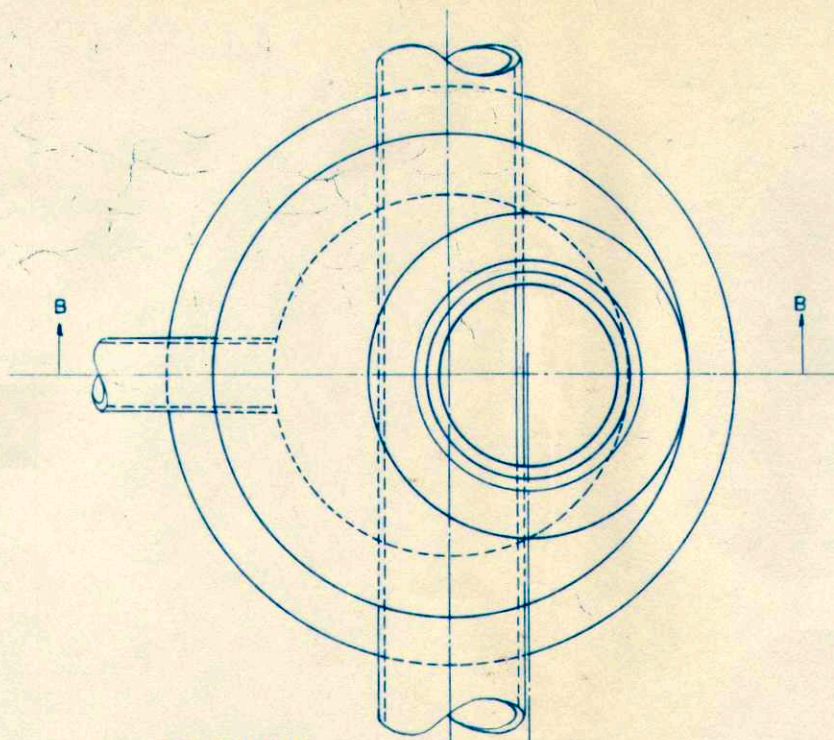
INLET TYPE "A"	
STATE HIGHWAY COMMISSION OF WISC.	
RECOMMENDED FOR APPROVAL:	
<i>Frank Craves</i> DESIGN ENGINEER	
<i>W. Blakely</i> CONSTRUCTION ENGINEER	
APPROVED: OCT. 1, 1945	
DRAWN _____	DATE _____
CHECKED <i>D.F.C.</i>	STATE HIGHWAY ENGINEER



FRAME

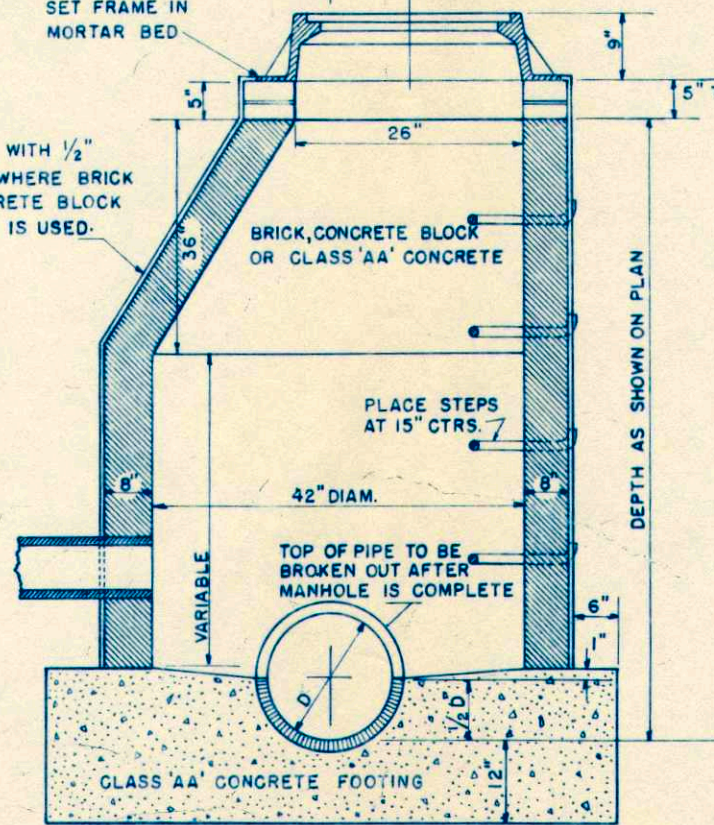


SEC. AA

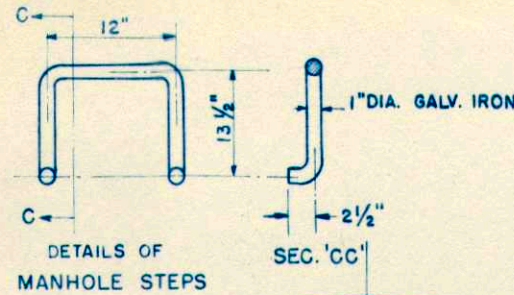


SET FRAME IN MORTAR BED

PLASTER WITH 1/2" MORTAR WHERE BRICK OR CONCRETE BLOCK MASONRY IS USED.

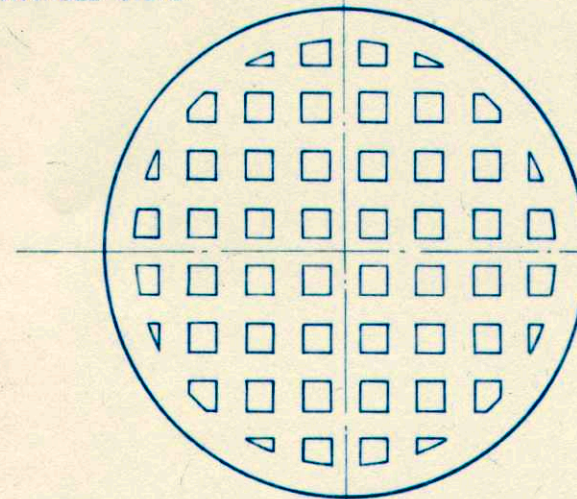


SEC. 'BB' OF MANHOLE

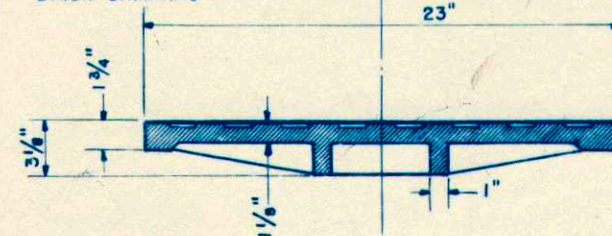


DETAILS OF MANHOLE STEPS

SEC. 'CC'



LID



CONSTRUCTION NOTES

DETAILS OF CONSTRUCTION NOT SHOWN SHALL CONFORM TO THE PERTINENT REQUIREMENTS OF THE STANDARD SPECIFICATIONS AND THE APPLICABLE SPECIAL PROVISIONS.

VARIATIONS IN DIMENSIONS AND DESIGN WILL BE PERMISSIBLE PROVIDING EQUIVALENT CAPACITY AND STRENGTH ARE ATTAINED.

MANHOLE SHALL INCLUDE FRAME, LID, CONCRETE BASIN, PIPE AND STEPS ARRANGEMENT AND NUMBER OF INLET AND DISCHARGE PIPES SHALL CONFORM TO THE NEEDS OF THE PERTINENT LOCATION.

MANHOLE

STATE HIGHWAY COMMISSION OF WISCONSIN

RECOMMENDED FOR APPROVAL

Frank Crane
DESIGN ENGINEER

Carl Bluh
CONSTRUCTION ENGINEER

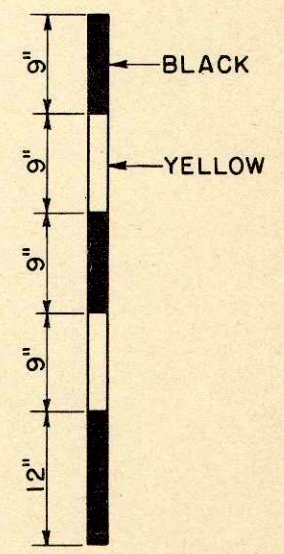
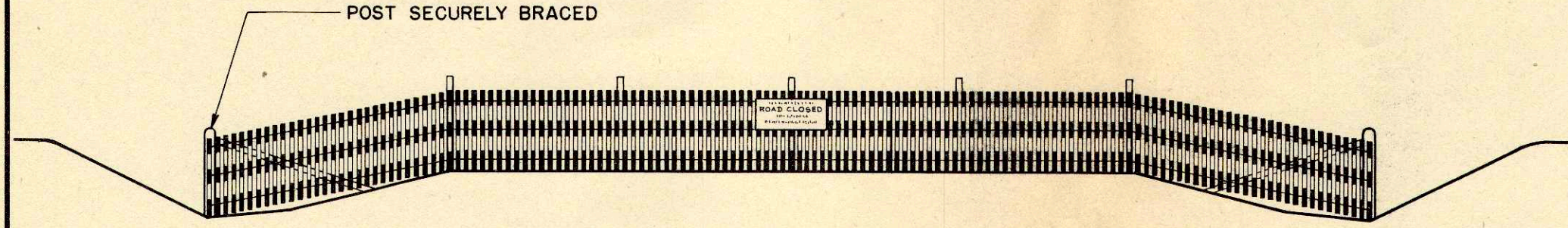
APPROVAL 2/20/46

DRAWN DIV. 2
CHECKED A/C

E. B. Rostons
STATE HIGHWAY ENGINEER

SECTION OF SNOW FENCE TO BE PAINTED ALTERNATELY BLACK AND YELLOW AS SHOWN BELOW.
 LENGTH TO BE SUFFICIENT TO REACH FROM TOE OF THE BACKSLOPE TO TOE OF THE BACKSLOPE.
 PROVIDE SUFFICIENT NUMBER OF INTERMEDIATE POSTS TO ADEQUATELY SUPPORT THE FENCE.

STANDARD "ROAD CLOSED" SIGN (W.H.C.- NO. R-15) TO BE ERECTED ON FENCE AT THE TOP ON
 THE CENTERLINE OF ROAD. SIGN WILL BE FURNISHED BY COMMISSION.



DETAIL SHOWING METHOD OF STRIPING
 FOR 4' SNOW FENCE.

STATE HIGHWAY COMMISSION OF WISCONSIN	
CONSTRUCTION BARRICADE	
RECOMMENDED FOR APPROVAL:	
<i>Frank Grace</i> DESIGN ENGINEER	
<i>W. Bluh</i> CONSTRUCTION ENGINEER	
APPROVED:	
DRAWN HM	OCT. 1, 1945 <i>E. G. F. Rettig</i>
CHECKED WHG	DATE STATE HIGHWAY ENGINEER

ESTIMATE OF QUANTITIES

CONTRACT NO. 1

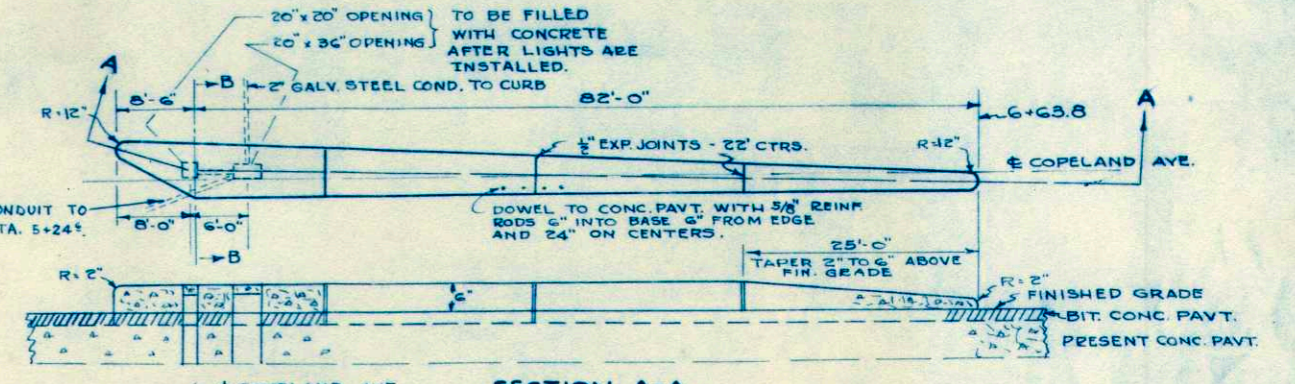
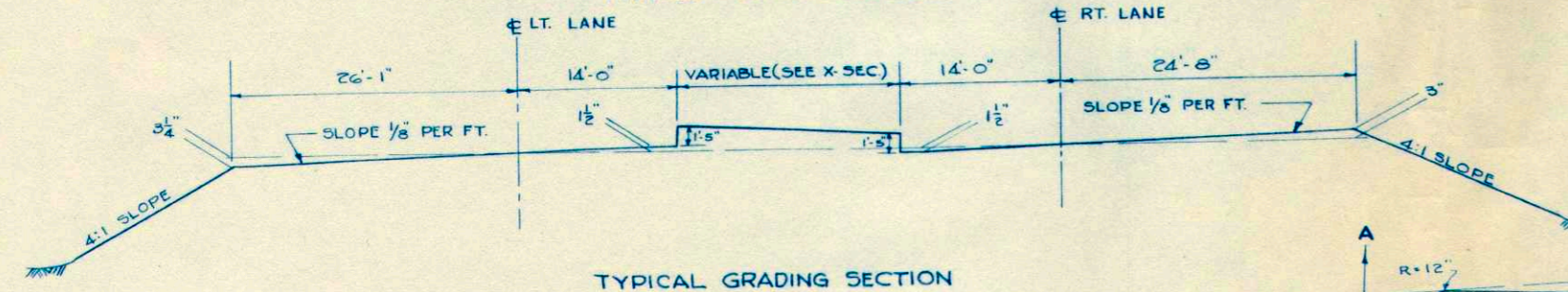
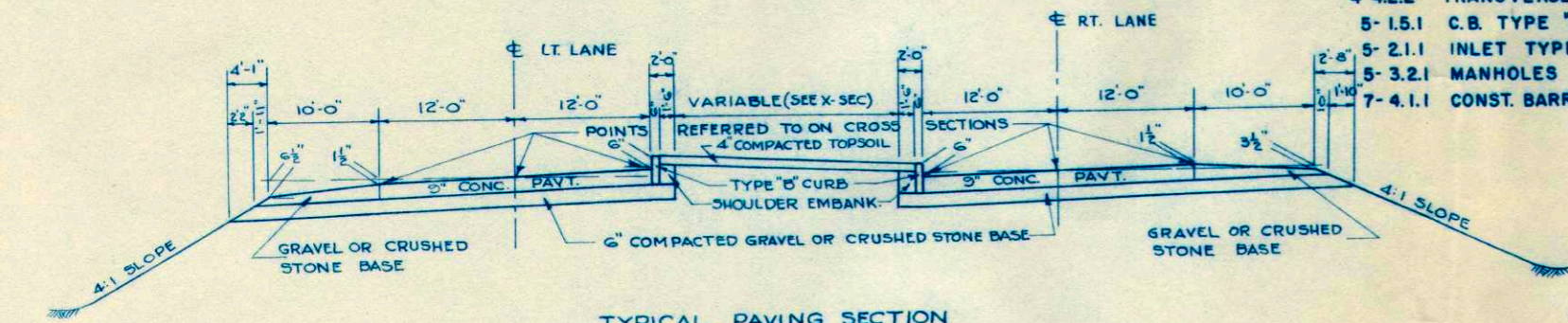
PROJECT	SHEET NO.	TOTAL SHEETS
U08-3(33)	2	22

THIS PROJECT IS TO BE EXECUTED UNDER THE STANDARD SPECIFICATIONS FOR ROAD AND BRIDGE CONSTRUCTION OF THE STATE HIGHWAY COMMISSION OF WISCONSIN - EDITION OF 1951. APPROVED JANUARY 23, 1952; FEDERAL AID REQUIRED

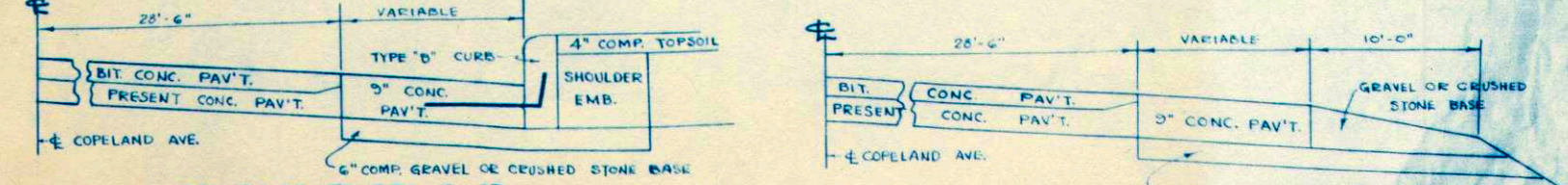
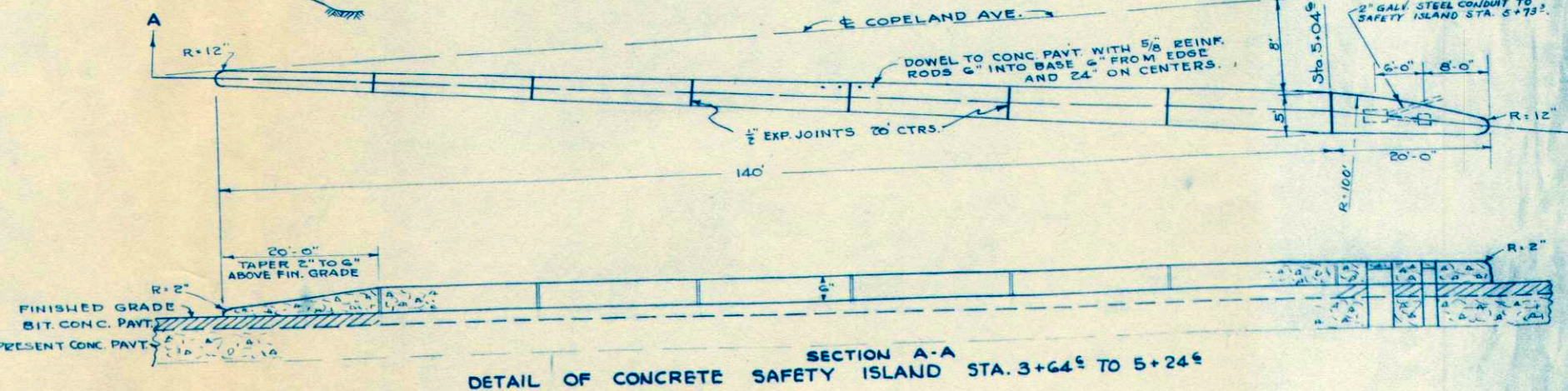
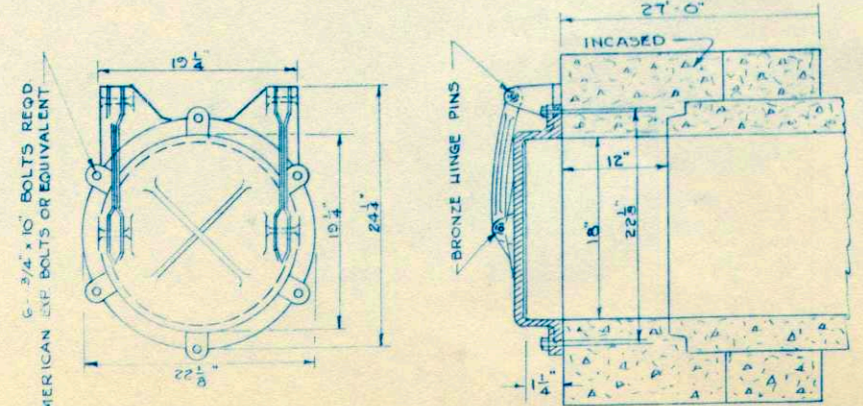
CONTRACT PROVISIONS APPROVED NOVEMBER 8, 1948, AND SPECIAL PROVISIONS AS ATTACHED TO PROPOSALS.

STATION TO STATION	NET LENGTH OF CENTER LINE	CLEAR-GRUBBING		EXCAVATION			SHOULDER EMBANKMENT	FINISHING ROADWAY	OBLITERATING OLD ROAD	GRAVEL OR CRUSHED STONE COURSE	BASE CONC. PAVEMENT	NON REINF. CONC. SEWER PIPE				DRAINAGE GATE	SAWED TRANS. CON. JOINTS	POURED TRANS. CON. JOINTS	MARKER POSTS FOR R/W	REMOVING PAVE-MENT	REMOVING CONC. SIDE-WALK	ABANDONING INLETS	GALV. STEEL CONDUIT 2"	BIT. MAT. FOR SURF. CSE.	BIT. CONC. PAVE-MENT	CATCH BASIN TYPE "E"	MANHOLE 42" DIA.	INLET TYPE "A"	CONC. CURB TYPE "B"	CONCRETE CURB & GUTTER TYPE "A" 30"	CONCRETE SIDEWALK 4"	CONC. SAFETY ISLAND	ADJ. MANHOLE COVERS	AGRIC. LIME TREAT.	TOPSOIL			FER-TIL-IZER	SEEDING					
		MARSH	UNCLASSIFIED	BORROW	12"	15"						18"	INCASED STORM SEWER	12"	15"																				18"	12"	15"			18"	SALVAGED	SQ. YD.	SQ. YD.	SQ. YD.
ITEM NO.		2101-1	2101-4	2106-4	2106-5	2109-1	2113-1	2114-1	2116-1	2203-1	2301-1	2519-11	2519-12	2519-13	2519-51	S.P.	S.P.	S.P.	2523-34	2523-36	2105-1	2105-2	2105-8	2105-19	2506-1	2314-3	2317-1	2520-1	2520-11	2520-21	2521-1	2521-3	2522-11	2522-31	2520-71	2531-2	2528-4	2603-1	2605-1	2532-1				
UNIT	LIN. FT.	STA.	STA.	C.Y.	C.Y.	C.Y.	C.Y.	STA.	STA.	C.Y.	SQ. YD.	LIN. FT.	LIN. FT.	LIN. FT.	LIN. FT.	L.S.	EACH	EACH	EACH	EACH	SQ. YD.	SQ. YD.	SQ. YD.	EACH	LIN. FT.	TONS	TONS	EACH	EACH	EACH	LIN. FT.	LIN. FT.	SQ. FT.	SQ. FT.	SQ. FT.	EACH	SQ. YD.	SQ. YD.	SQ. YD.	CWT.	SQ. YD.			
1+00 - 12+20 ⁵	1098.3	3	3	7085	606	32064	975	11		2065	4568	181					80	20			628	2350	37	2		47	739	1		4	1523	156		900	1	4600	3740			60		8340		
ACCESSORY										35										132		28			340	3	54		4		50	603												
CITY OF LACROSSE										100		228	380	373	27										1																			
TOTAL		3	3	7085	606	32064	975	11		2200	4568	409	380	373	27	1	80	20			760	2350	65	2	340	50	793	1	4	4	1523	252	603	900	1	4600	3800			60		8400		

- APPLICABLE STANDARD DETAILS:
- 1-1.1.2 MARSH EXCAVATION
 - 3-1.1.3 CONC. CURB & GUTTER
 - 4-4.2.2 TRANSVERSE JOINTS
 - 5-1.5.1 C.B. TYPE "E"
 - 5-2.1.1 INLET TYPE "A"
 - 5-3.2.1 MANHOLES
 - 7-4.1.1 CONST. BARRICADE



AUTOMATIC DRAINAGE GATE
STA. 2+60 RT.
NEENAH FOUNDRY CO. CAT. NO. R-5050 OR EQUIVALENT



STA. 3+88 TO STA. 6+03
STA. 1+00 TO 3+88 & STA. 6A+63.8 TO 7A+43.8
DETAIL OF PAV'T. WIDENING ALONG COPELAND AVENUE

DETAIL SUMMARY SHEET OF MISCELLANEOUS QUANTITIES

CLEARING & GRUBBING

STATION TO STATION	STATIONS
9+00 - 12+00	3

GRAVEL OR CR. STONE BASE COURSE

STA.	STA.	LOC'N	QUANT. C.Y.	REMARKS
1+50	12+20.5	E	1630	BASE CRSE
12+20.5	12+50	E	35	ACCESSORY
		E. MON.	30*	BASE CRSE
		W. MON.	10*	

CONC. CURB & GUTTER H=6", W=30"

STA.	STA.	LOC'N	QUANT. LIN. FT.	REMARKS
11+08	11+53	RT.	60	
11+53	11+60		31*	E. MONITOR
11+44	11+61	LT.	34	
11+61			7*	W. MONITOR
12+09	12+20.5	LT.	42	
			12*	W. MONITOR
			22	ACCESSORY
12+20.5	12+46		20	
12+09	12+20.5	RT.	20	
12+20.5	12+44.5		24	ACCESSORY

REMOVING PAVEMENT

STA.	STA.	LOC'N	QUANT. SQ. YD.	REMARKS
11+61.5	12+20.5		333	
			178	WEST ON MONITOR ST.
11+61.5	12+20.5		117	
12+20.5	12+46.5		125	ACCESSORY
12+20.5	12+46.5		7	ACCESSORY

CONCRETE PAVEMENT

STA.	STA.	LOC'N	QUANT. SQ. YD.	REMARKS
6+00	11+44	LT. E	165	SHOULDER
1+00	11+08	RT. E	260	"
	6+30	LT. E	10	SH. OF RAD.

ABANDONING INLETS

STA.	LOCATION	QUANTITY
12+13	12' RT. OF RT. LANE E	1
12+20	22' LT. OF LT. LANE E	1

AUTOMATIC DRAINAGE GATE

STA.	LOC'N	QUANT.	REMARKS
2+60	RT.	1*	

CONCRETE CURB TYPE "B"-6"

STA.	STA.	LOC'N	QUANT. LIN. FT.	REMARKS
3+90	11+51		751	RT. SIDE IS.
3+90	11+51		772	LT. SIDE IS.

REMOVING BIT. SURF.

STA.	STA.	QUANT. SQ. YD.	LOCATION
1+00	2+85	298	RT. 1/2 OF RT. LANE
2+85	4A+35	475	RT. LANE
4A+35	5A+00	331	RT. LANE & RT. 1/2 LT. L.
5A+00	6A+50	929	FULL WIDTH
6A+50	7A+50	317	RT. LANE

MANHOLES (42" DIAM.)

STA.	DISTANCE FROM T	INVERT ELEV.	COVER ELEV.	DEPTH
2+60	40' RT.	636.23	642.20	4.80*
5+46	31' LT.	636.80	642.90	4.93*
9+25	10' LT.	637.57	642.90	4.16*
11+70	3' LT.	638.03	642.63	3.43*

CONCRETE SIDEWALK "4"

STA.	STA.	LOC'N	QUANT. SQ. FT.	REMARKS
12+10	12+20.5	LT.	56.6*	
			180*	W. MONITOR
12+20.5	12+46	LT.	153*	
12+10	12+20.5	RT.	634*	
			30*	E. MONITOR
12+20.5	12+40.5	RT.	120*	

BITUMINOUS SURFACE

STA.	STA.	AVE. WIDTH	LENGTH	SQ. YD.	AVE. DEPTH	BIT. MAT'L FOR PRIME COAT RC-01 GAL.	BIT. MAT'L FOR SURF. COURSE SURF. BIT. TONS	WEDGING TONS	BIT. CONCRETE PAVEMENT 3" SURF. TONS	WEDGING TONS
1+00	2+50	15	150	249	3 1/2"	---	2.61	0.44	41.1	6.9
2+50	2+85	15	35	58	4 1/4"	---	0.61	0.28	9.6	4.5
2+85	3+12	22	27	66	5 1/2"	---	0.69	0.57	10.9	9.1
3+12	3+67	29 3/8	55	180	6"	---	1.87	1.87	29.7	29.7
3A+67	4A+00	31 3/8	33	116	6"	---	1.20	1.20	19.1	19.1
4A+00	4A+50	39	50	217	6"	---	2.26	2.26	35.8	35.8
4A+50	5A+00	52 3/8	50	292	6"	---	3.03	3.03	48.1	48.1
5A+00	5A+40	62	40	276	6"	---	2.87	2.87	45.8	45.7
5A+40	5A+62	62	22	152	5 1/2"	---	1.58	1.32	25.1	20.9
5A+62	5A+75	62	13	90	6"	---	0.94	0.94	14.9	14.9
5A+75	6A+00	64	25	178	6 1/2"	---	1.85	2.16	29.4	34.2
6A+00	6A+50	15	57	95	4 1/2"	---	0.99	0.49	15.7	7.8
6A+50	7A+00	28 3/8	50	158	3"	---	1.64	---	26.1	---
7A+00	7A+50	28 3/8	50	158	2 1/2"	---	1.37	---	21.7	---
						---	0.50*	---	8.0*	---
						---	1.08	---	17.1	---
						---	1.61*	---	25.5*	---
						---	1.27*	---	20.1*	---
						---	0.78	---	12.4	---
						---	1.42	---	22.6	---
						---	2.38	---	37.6	---

PIPE CULVERTS

MILE NO.	STATION	DIAMETER INCHES	LENGTH LIN. FT.	TYPE	ROW	P. & S. R. L. R.	REP. RAP	MARK. ERS.
----------	---------	-----------------	-----------------	------	-----	------------------	----------	------------

REMOVING CONC. SIDEWALK

STA.	STA.	QUANT. SQ. YD.	LOCATION
12+10.5	12+20.5	11.0	RT.
		22.7	WEST ON MONITOR
		33	EAST "
12+20.5	12+46.5	28.0	ACCESSORY, RT, LT.

INLETS TYPE "A"

STA.	DISTANCE FROM T	INVERT ELEV.	GRATE ELEV.
5+40	60' LT.	640.09	642.17
9+25	0	640.04	642.12
11+63	58' LT.	638.73	640.81
11+99	61' LT.	638.80	640.88

CONCRETE SAFETY ISLANDS

STA.	STA.	LOC'N	QUANT. SQ. FT.	REMARKS
3+64.6	5A+24.6	RT. E	558.0	COPEL'D AVE
5A+73.3	6A+63.8	E	342.0	" "

SHOULDER EMBANKMENT

STA.	STA.	LOC'N	QUANT. CU. YDS.	REMARKS
3+90	11+31.5	E	959	BACK OF ISLAND CURBS
11+07	12+45	LT. & RT.	16	BACK OF CURBS

SEEDING

STA.	STA.	LOC'N	QUANT. SQ. YDS.	REMARKS
1+90	11+08	RT.	3200	
6+50	11+44	LT.	2216	
3+91	11+35	E	2468	ISLAND
11+08	11+60	RT.	376	
11+44	11+60	LT.	80	
12+20.5	12+46	LT. & RT.	60	ACCESSORY

ADJUSTING MANHOLE COVERS

STA.	LOC'N	QUANT.	REMARKS
11+88.5	E	1	

***CITY OF LACROSSE PORTION**

NON-REINFORCED CONCRETE SEWER PIPE STORM SEWER

STA. - STA.	DIAM. INCHES			REMARKS
	12	15	18" INCASED	
2+60 - 5+46			284*	MAIN LINE
2+60			17*	DISCH. PIPE RT. (WITH DRAINAGE GATE)
2+60			72*	STUB LT.
5+46 - 9+25			380*	MAIN LINE
5+46		8'		INLET TO MANHOLE
9+25 - 9+58		52		CATCH BASIN TO MANHOLE
9+58		6		INLET PIPE TO MANHOLE
9+25 - 11+70		228*		MAIN LINE
11+63 - 11+70		49		INLET TO MANHOLE
11+70 - 11+99		66		" "

TOPSOIL

STA.	STA.	LOC'N	QUANT. SQ. YDS.	REMARKS
1+90	4+50	RT.	646	
6+50	8+00	LT.	170	
11+08	11+60	RT.	376*	
11+44	11+60	LT.	80*	
12+20.5	12+46	LT. & RT.	60*	ACCESSORY
3+91	11+35	E	2468	ISLAND

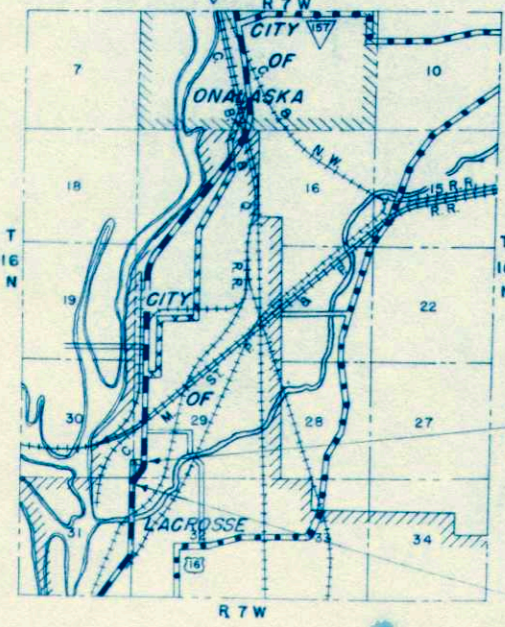
AGRICULTURAL LIME TREATMENT

STA.	STA.	LOC'N	QUANT. SQ. YDS.	REMARKS
4+50	11+08	RT.	2555	
8+00	11+44	LT.	2045	

COUNTY AND HIGHWAY	ROUTE AND SECTION	CLASS AND AGREEMENT		FEDERAL DIVISION OFFICE	SHEET NUMBER	TOTAL SHEETS
		STATE	FEDERAL			
32.1	8.3		12.33	WIS. 5N	4	22

SCALE: 1" = 10'

SCHEDULE OF LANDS AND INTERESTS REQUIRED			
PAR.	OWNER	ACRES	INTEREST REQUIRED
1	NORBERT J. SCHAEFER	.03	FEE SIMPLE
2	NORTHERN STATES POWER CO.	.08	"
3	NORTHERN STATES POWER CO.	—	SLOPE EASEMENT & STORM SEWER OUTLET
4	JOHN EDWIN MORRISON	.61	FEE SIMPLE
5	JOHN EDWIN MORRISON	—	SLOPE EASEMENT
6	BENJAMIN S. STARCH	.37	FEE SIMPLE
7	BENJAMIN S. STARCH	—	SLOPE EASEMENT
8	LLOYD E. GUDGEON	.45	FEE SIMPLE
17	NORTHERN STATES POWER CO.	—	POLE EASEMENT RELEASE
9	LLOYD E. GUDGEON	—	SLOPE EASEMENT
10	BENJAMIN S. STARCH	.01	FEE SIMPLE
11	BENJAMIN S. STARCH	—	SLOPE EASEMENT
12	JOHN EDWIN MORRISON	.73	FEE SIMPLE
13	JOHN EDWIN MORRISON	—	SLOPE EASEMENT
14	SAM WAKEEN	.01	FEE SIMPLE
15	SAM WAKEEN	—	SLOPE EASEMENT
16	SOCONY-VACUUM OIL CO.	—	"

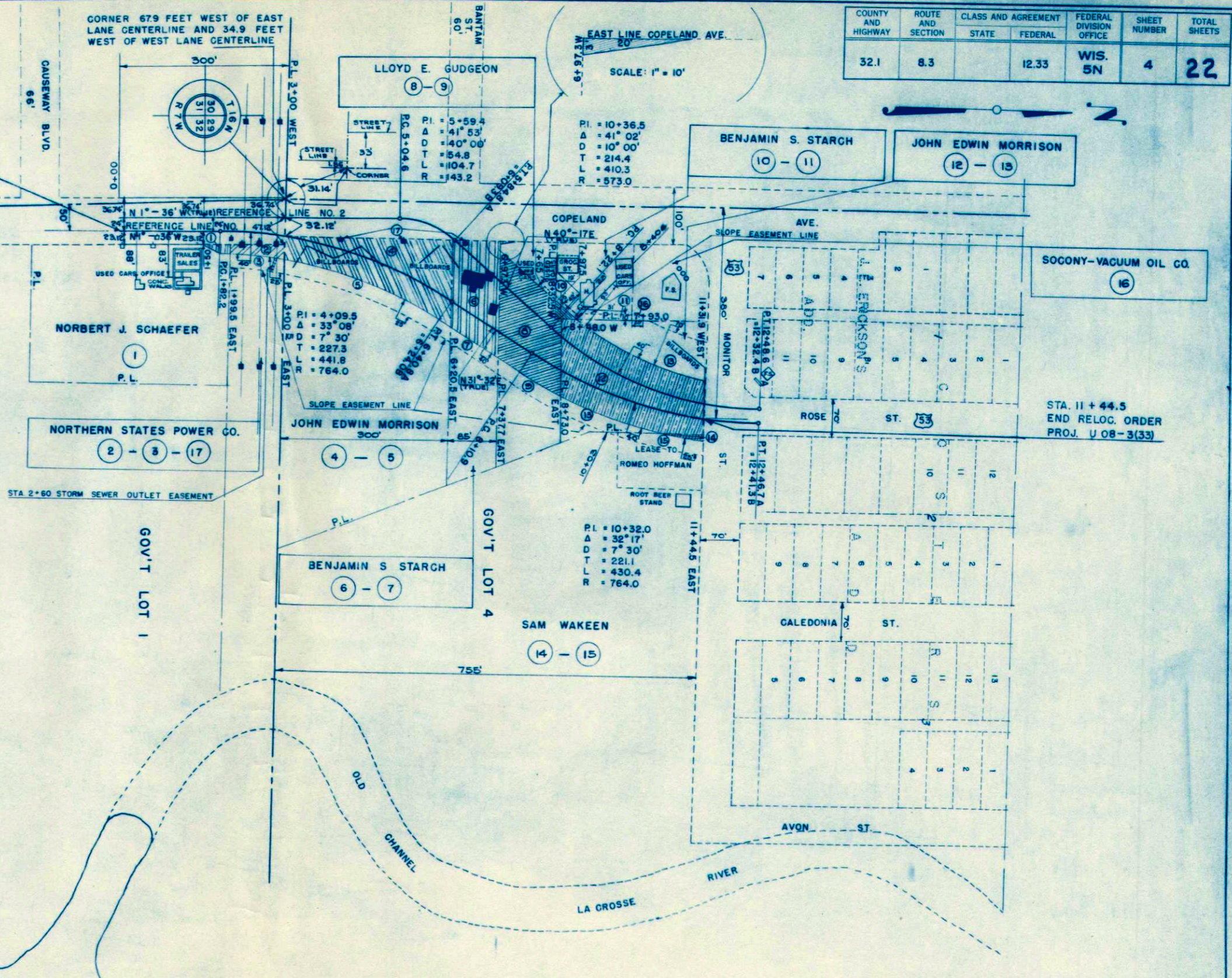


LOCATION SKETCH

SCALE
0 1/2 1
MILES

STA. 11+44.5
END RELOC. ORDER
PROJ. U08-3(33)

STA. 0+00
BEG. RELOC. ORDER
PROJ. U08-3(33)



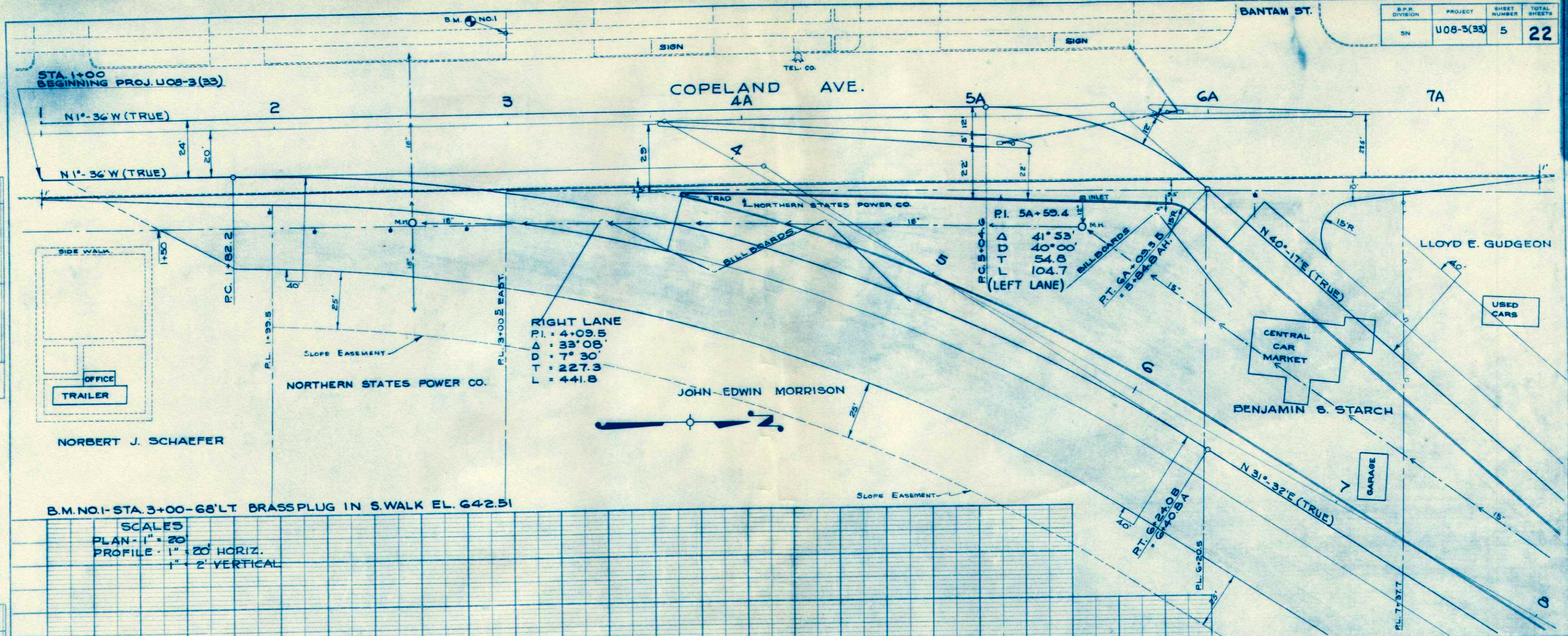
STATE HIGHWAY COMMISSION OF WISCONSIN
PLAT OF RIGHT OF WAY REQUIRED
PROJECT U08-3(33)
 COPELAND AVENUE RELOCATION
 U.S.H. 53 LACROSSE COUNTY

SCALE
0 50 100 200 FT.

LENGTH = 0.232 MILES DATED JUNE 23, 1952

PLAN
 SURVEYED
 PLOTTED
 NOTE BOOK ALIGNED CHECKED
 NO. L.L.

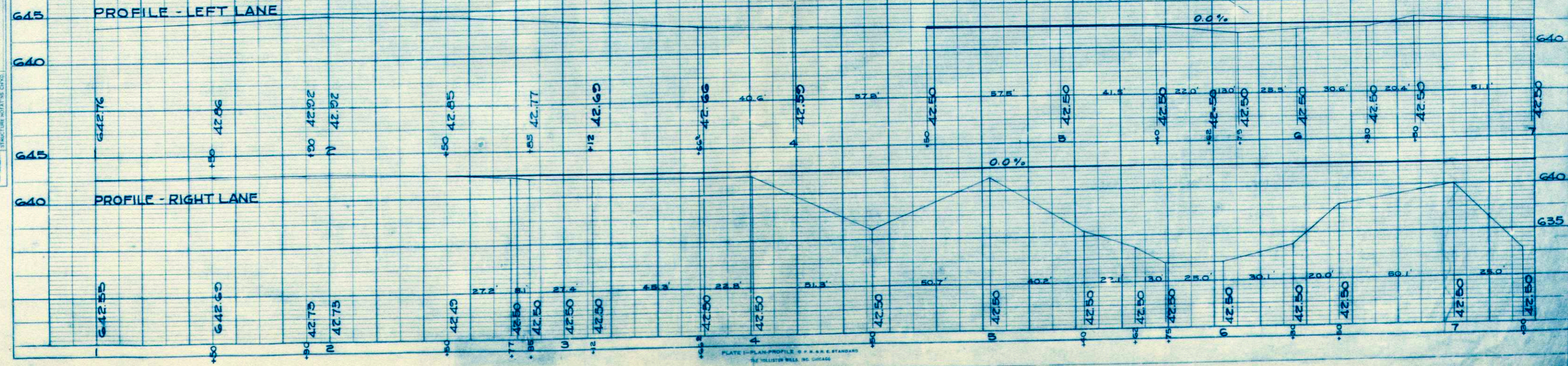
PROFILE
 SURVEYED
 PLOTTED
 NOTE BOOK CHECKED
 B.M. MONED.
 STRUCTURE NOTATIONS CHYD.
 NO. L.L.



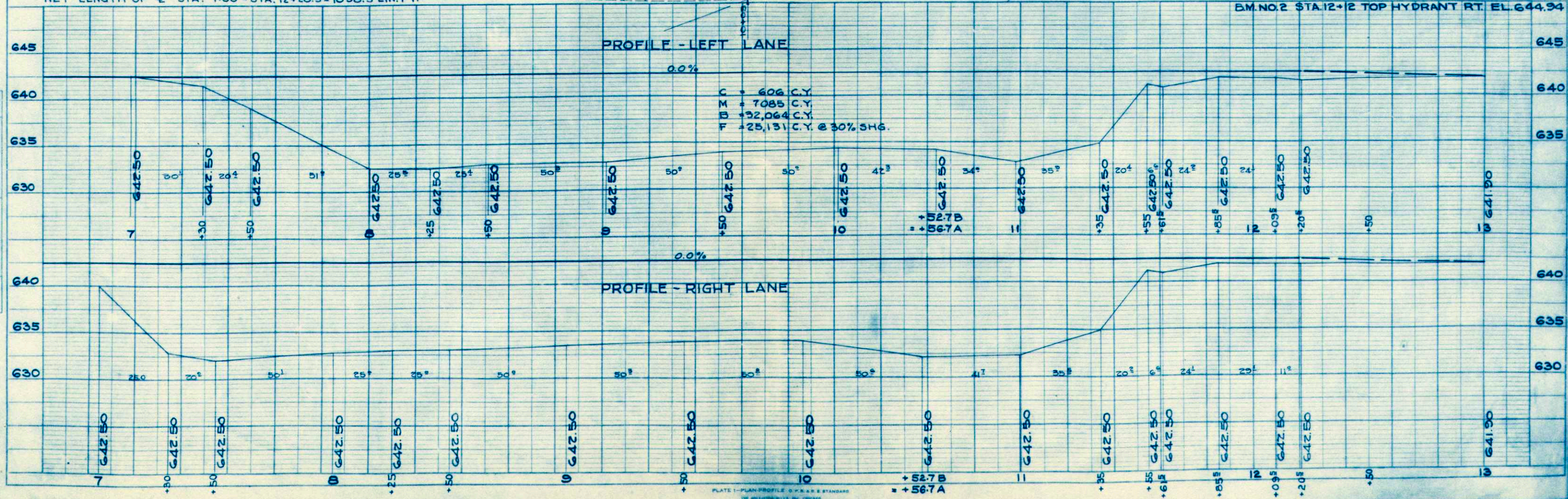
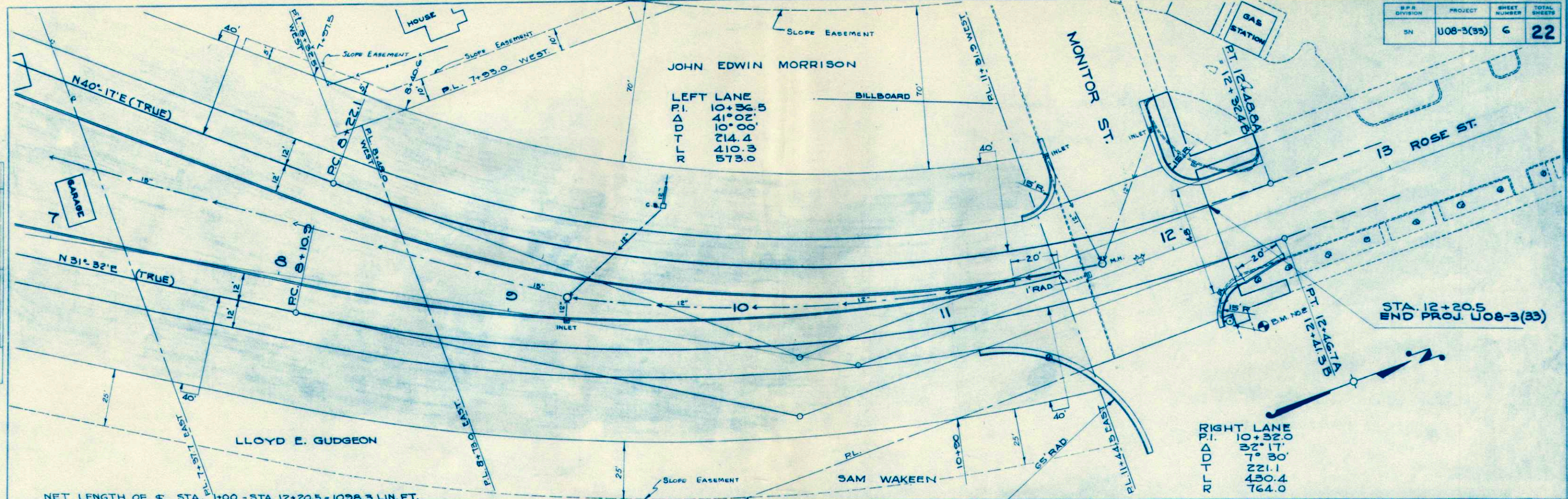
RIGHT LANE
 P.I. = 4+09.5
 Δ = 33° 08'
 D = 7° 30'
 T = 227.3
 L = 441.8

B.M. NO. 1 - STA. 3+00 - 68' LT. BRASS PLUG IN S. WALK EL. 642.51

SCALES
 PLAN - 1" = 20'
 PROFILE - 1" = 20' HORIZ.
 1" = 2' VERTICAL



D.P. DIVISION	PROJECT	SHEET NUMBER	TOTAL SHEETS
SN	U08-3(33)	6	22



DATE 2-52
 BY F.J.K. (CITY)
 CHECKED J.N.J.
 PLANNED BY J.N.J.
 SURVEYED BY J.N.J.
 NOTE BOOK NO. 111
 P.L. 111

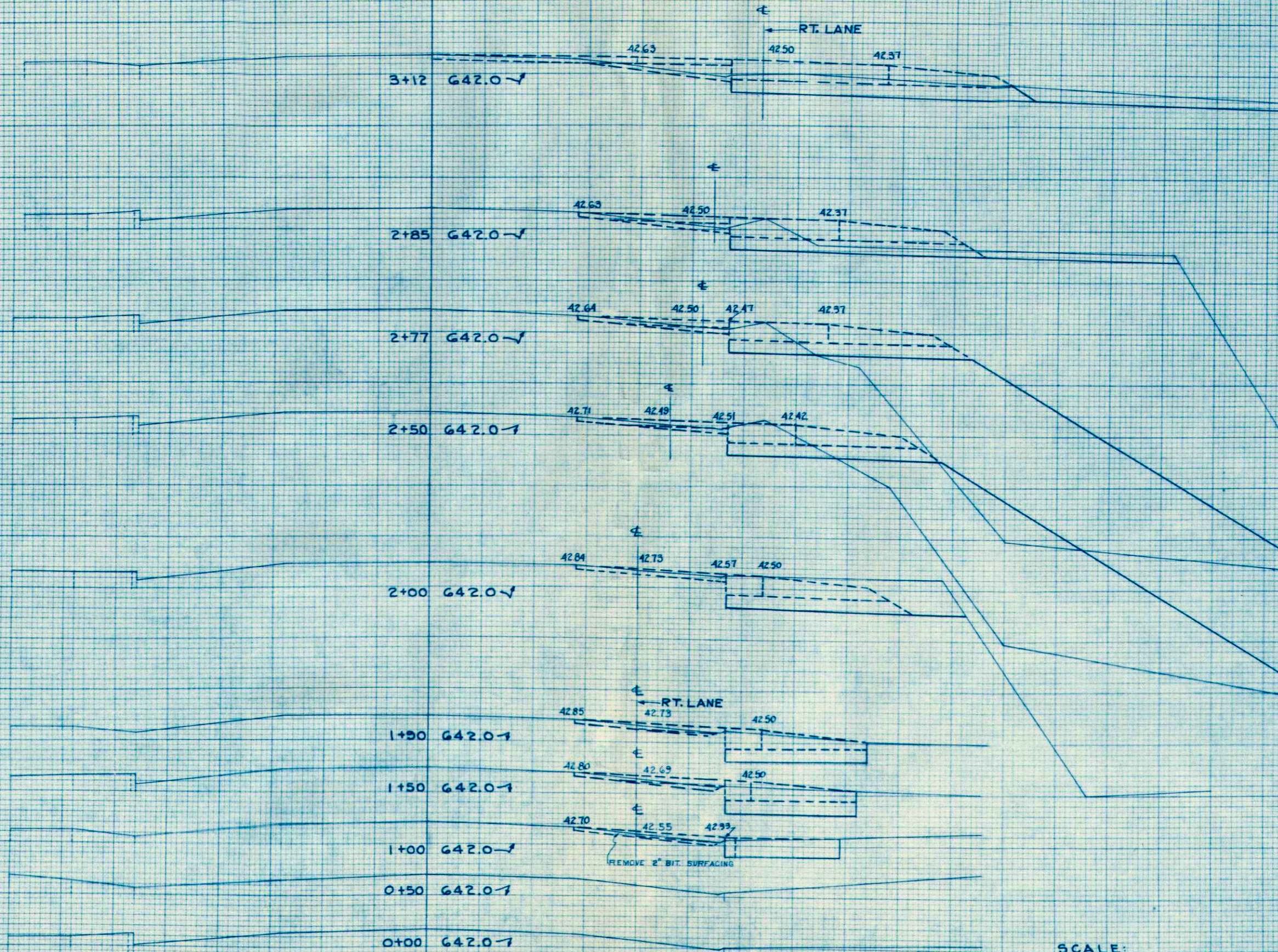
DATE 2-52
 BY F.J.K. (CITY)
 CHECKED J.N.J.
 PLANNED BY J.N.J.
 SURVEYED BY J.N.J.
 NOTE BOOK NO. 111
 P.L. 111

☐ & ☐ OF COPELAND AVE.

P.R.A. DISTRICT OFFICE	PROJECT	SHEET NUMBER	TOTAL SHEETS
WIS. SN	U 08-3(33)	14	22

FINAL SURVEY
 SURVEYED
 PLOTTED
 NOTE BOOK
 NO. 4, 1st

ORIGINAL SURVEY
 SURVEYED
 PLOTTED
 NOTE BOOK
 NO. 4, 1st

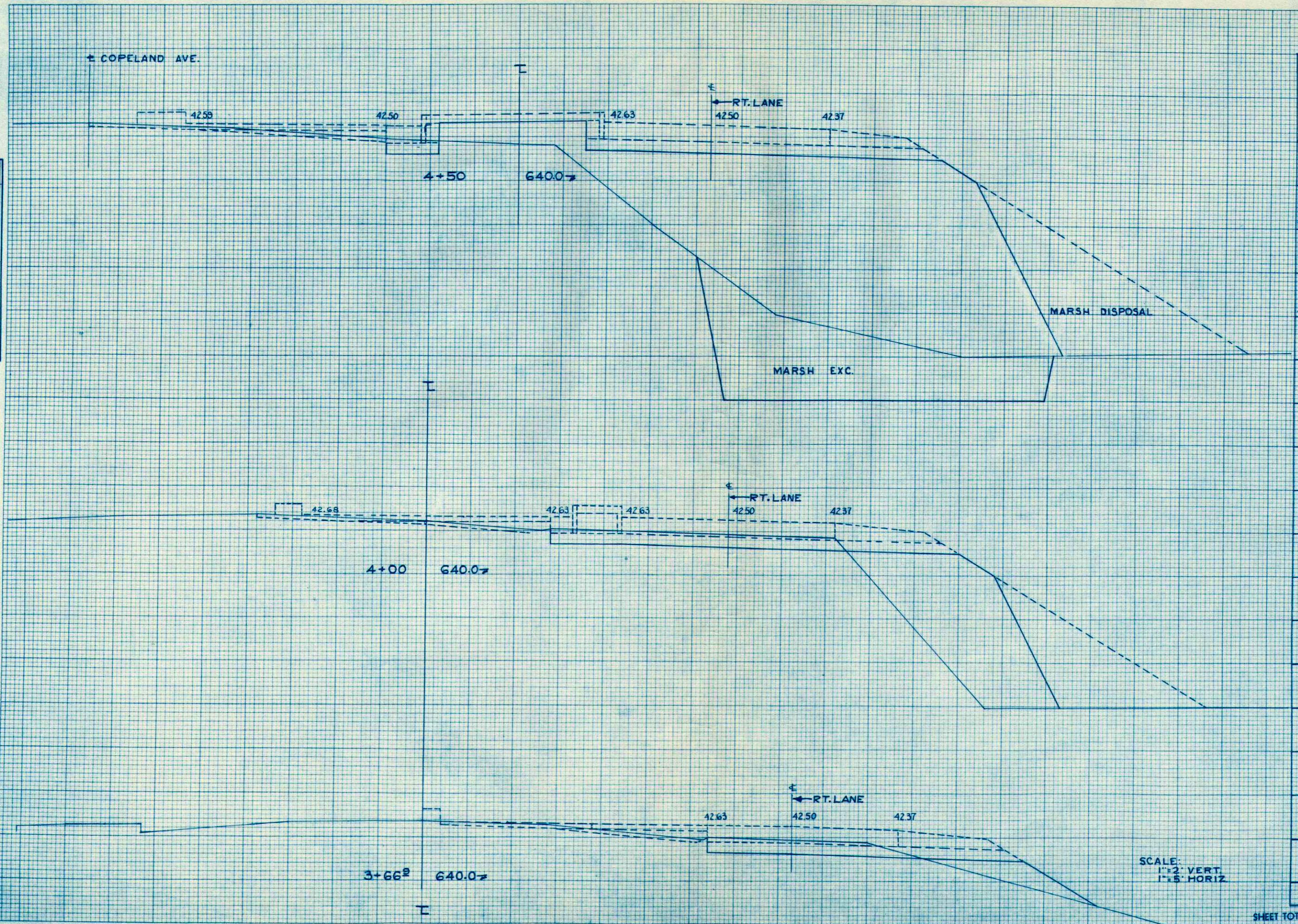


STATION	DISTANCE	YARDAGE	
		COMMON	FILL
0		UNCL	
+50	7		
1	19		
+50	19		
+90	7		0
2	33		117
+50	7		133
+77	4		20
+85	24		0
3			
12			
SHEET TOTAL		120	270

SCALE:
 1" = 2' VERT.
 1" = 5' HORIZ.

FINAL SURVEY
 SURVEYED _____
 PLOTTED _____
 NOTE BOOK NO. _____
 AREAS CHECKED _____

ORIGINAL SURVEY
 SURVEYED _____
 PLOTTED _____
 NOTE BOOK NO. _____
 AREAS CHECKED _____

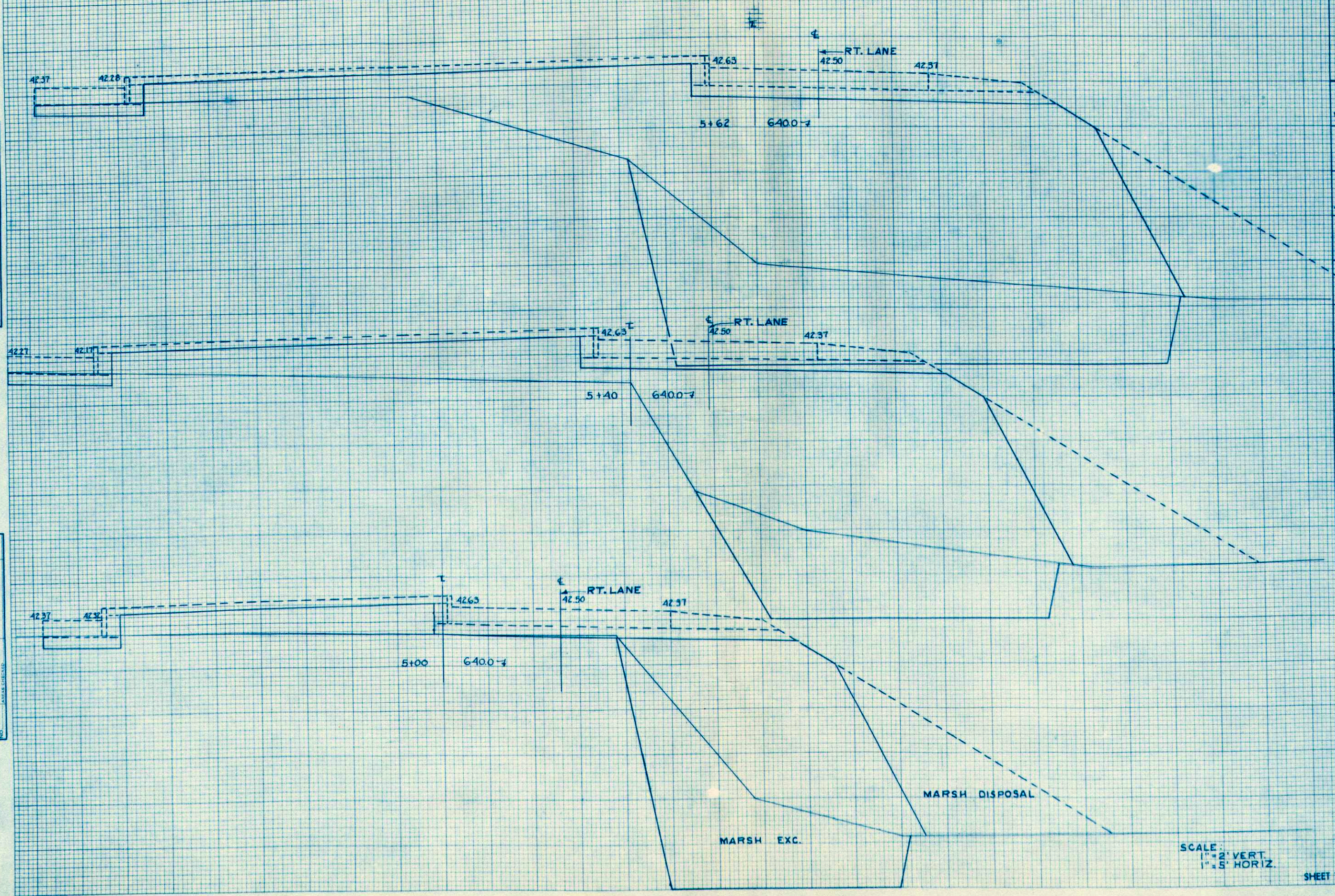


STATION	DISTANCE	YARDAGE		
		COMMON UNCL.	MARSH	FILL
3+66 ^B				
4+00		37		9
4+50		13		43
		22	111	493
SHEET TOTAL				
		72	111	545

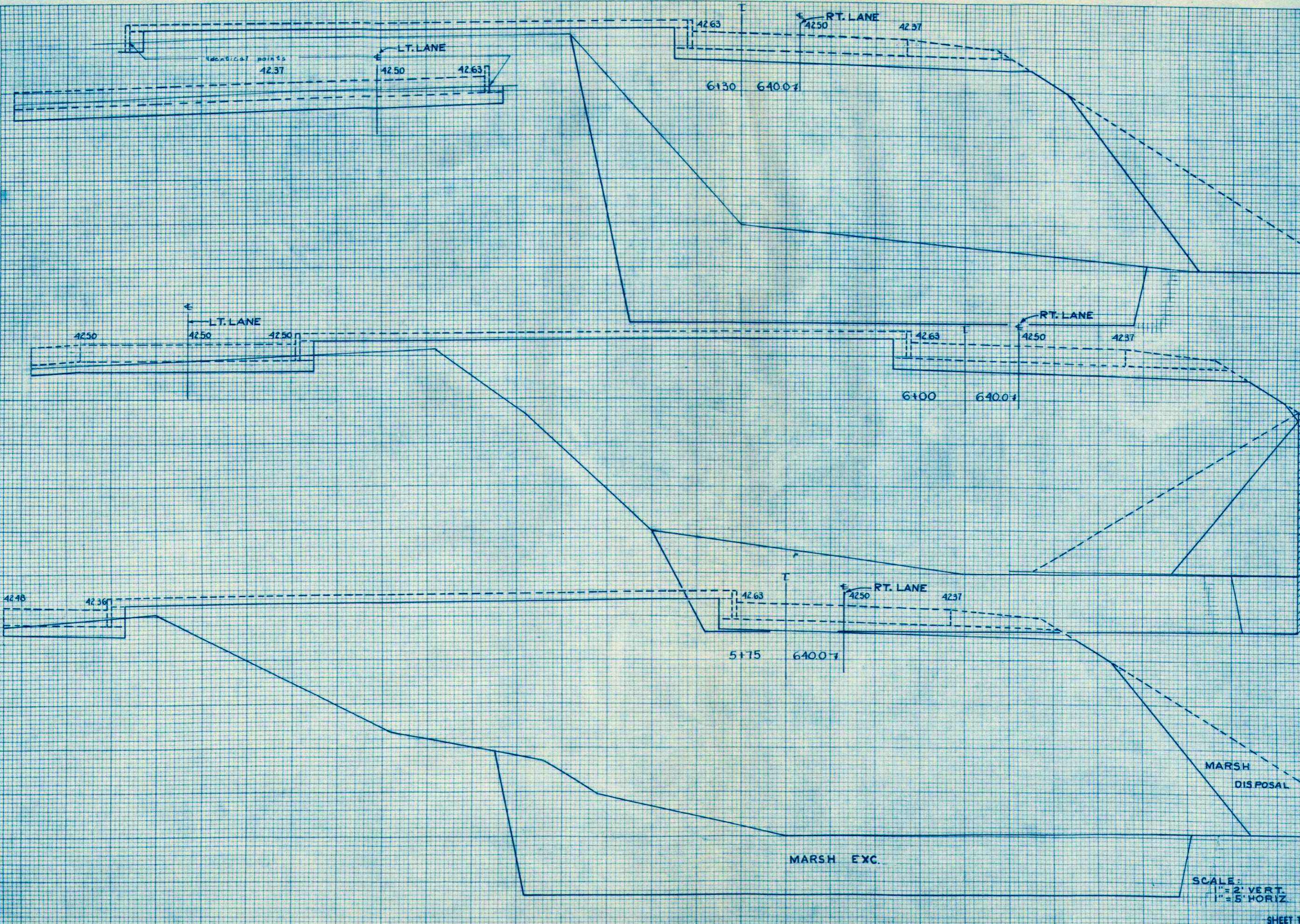
SCALE:
 1" = 2' VERT.
 1" = 5' HORIZ.

DATE _____ BY _____
 SURVEYED _____
 PLOTTED _____
 NOTE BOOK _____
 NO. _____ AREA CHECKED _____

DATE _____ BY _____
 SURVEYED _____
 PLOTTED _____
 NOTE BOOK _____
 NO. _____ AREA CHECKED _____



STATION	DISTANCE	YARDAGE		
		EXCAVATION	MARSH	FILL
4 + 50	9		231 702	
5 + 40	9		185 593	
+ 62	6		150 457	
SHEET TOTAL		24	566 752	



STATION	DISTANCE	YARDAGE		
		COMMON UNCL.	MARSH	FILL
5				
+ 62		4	119	413
+ 75		11		222
+ 91				989
+ 30				
SHEET TOTAL		46		2398

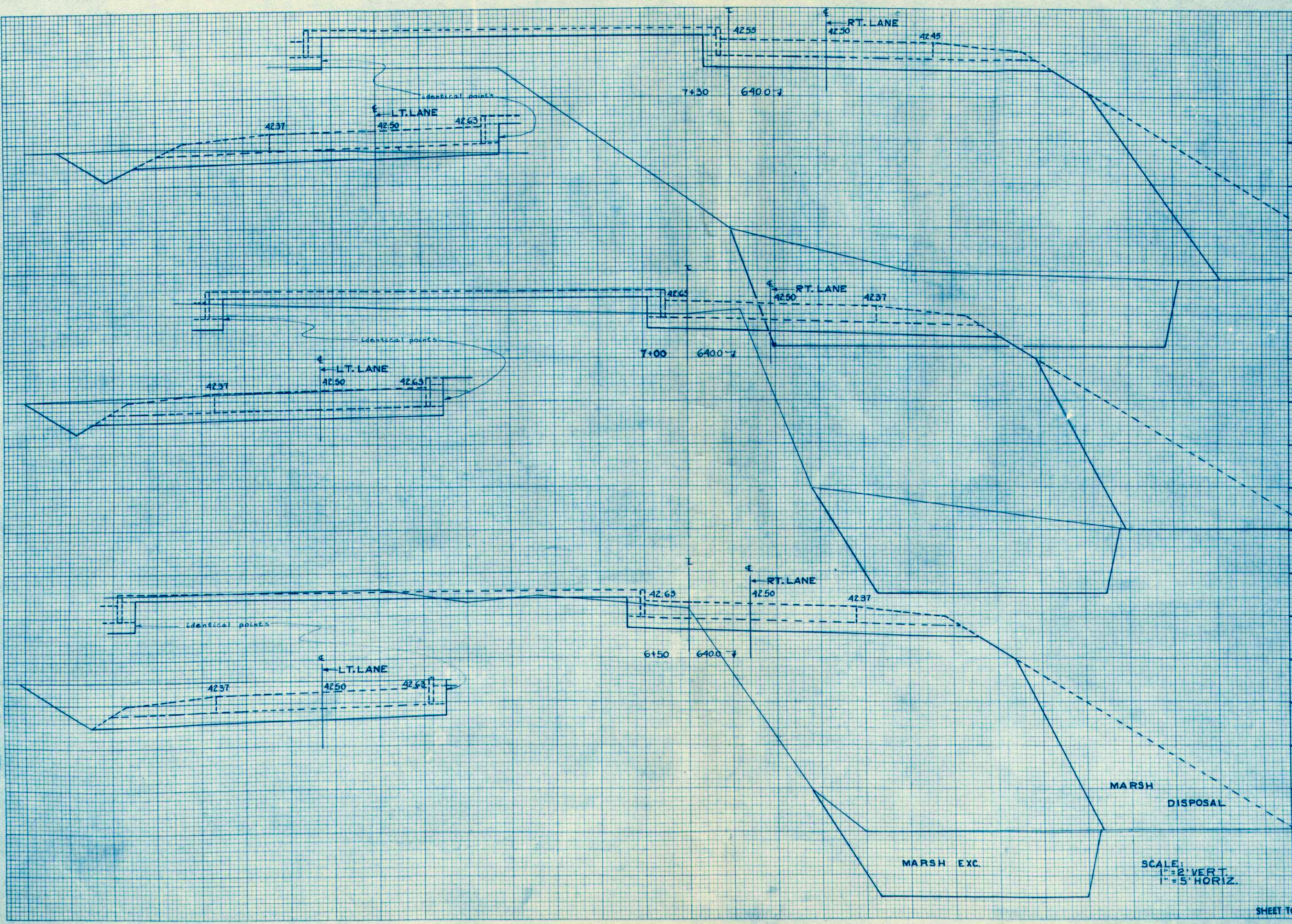
FINAL SURVEY SURVEYED, PLOTTED, NOTE BOOK, TEMPLATE NO. BY DATE AREAS CHECKED

ORIGINAL SURVEY SURVEYED, PLOTTED, NOTE BOOK, TEMPLATE NO. BY DATE AREAS CHECKED

SCALE:
1" = 2' VERT.
1" = 5' HORIZ.

FINAL SURVEY
 SURVEYED, PLOTTED, CHECKED, AND RECHECKED BY: _____
 DATE: _____
 NOTE BOOK NO. _____
 AREA CHECKED: _____

ORIGINAL SURVEY
 SURVEYED, PLOTTED, CHECKED, AND RECHECKED BY: _____
 DATE: _____
 NOTE BOOK NO. _____
 AREA CHECKED: _____

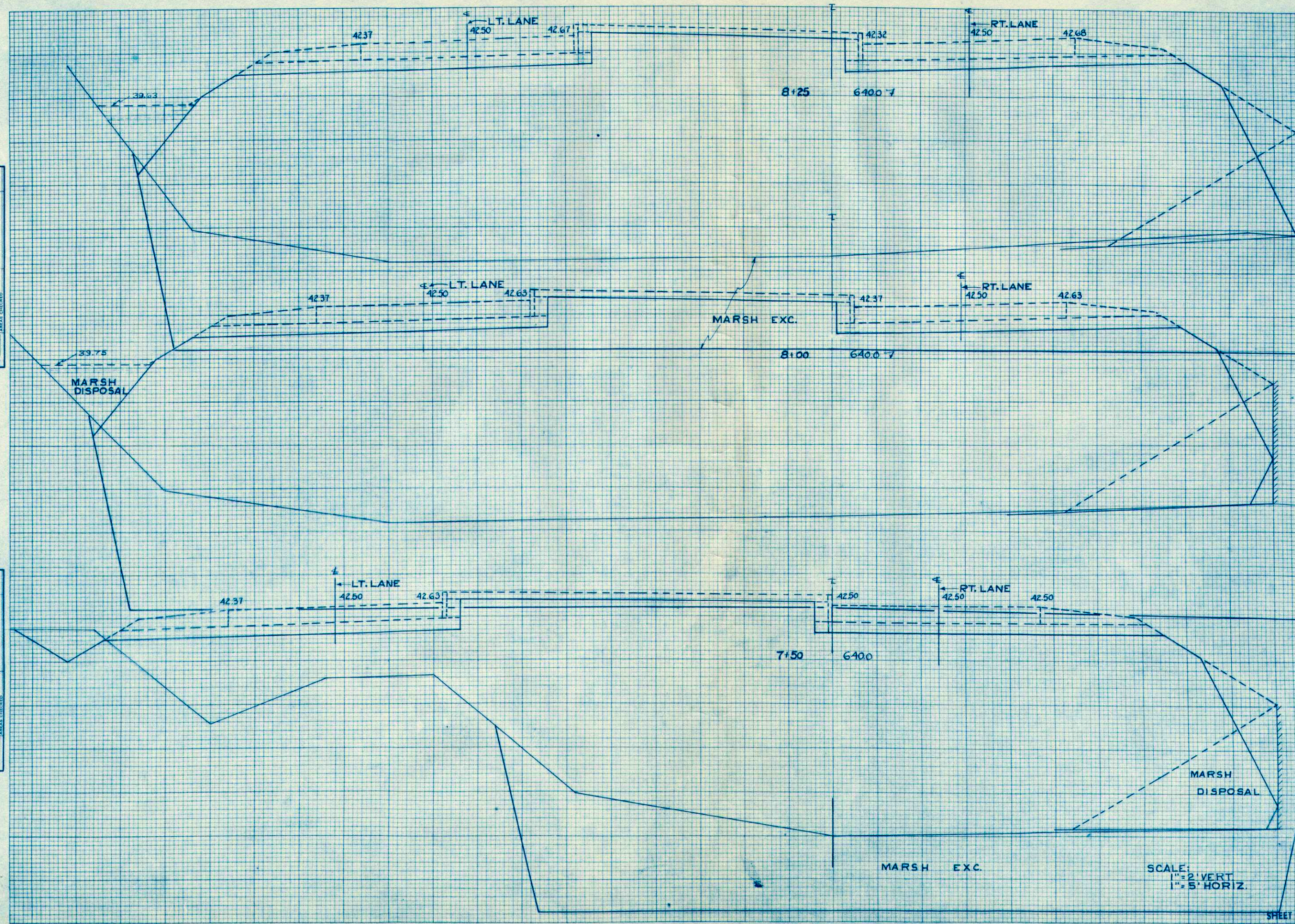


STATION	DISTANCE	YARDAGE		
		EXCAVATION	MARSH	FILL
6+30	50		131	396
+50	144		185	715
7+30	48		163	644

SCALE:
 1" = 2' VERT.
 1" = 5' HORIZ.

FINAL SURVEY
 SURVEYED, PLOTTED, NOTE BOOK, AREA CHECKED

ORIGINAL SURVEY
 SURVEYED, PLOTTED, NOTE BOOK, AREA CHECKED

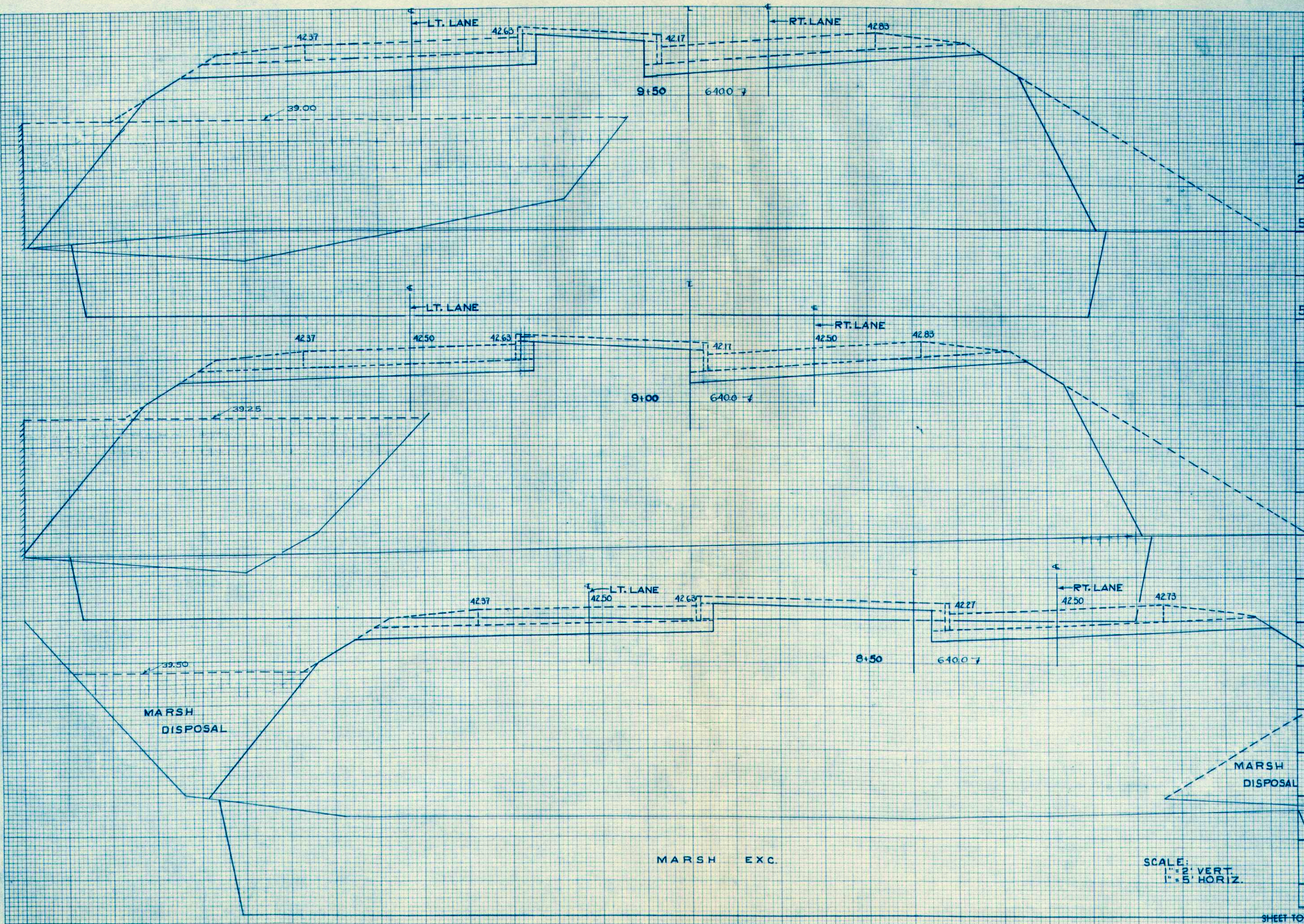


STATION	DISTANCE	YARDAGE		
		COMMON UNCL.	MARSH	FILL
7+30		13		180 715
+50		9		830 267
8				535 1539
+25				

SCALE:
 1" = 2' VERT.
 1" = 5' HORIZ.

FINAL SURVEY
 REVISED
 PLOTTED
 TEMPLATE
 NOTE BOOK
 AREA
 AREA CHECKED
 NO.

ORIGINAL SURVEY
 REVISED
 PLOTTED
 TEMPLATE
 NOTE BOOK
 AREA
 AREA CHECKED
 NO.



STATION	DISTANCE	YARDAGE		
		COMMON UNCL.	MARSH	FILL
8+25			550	1506
+50			941	2728
9+50			787	2376
+50				
SHEET TOTAL				22786610

SCALE:
 1" = 2' VERT.
 1" = 5' HORIZ.

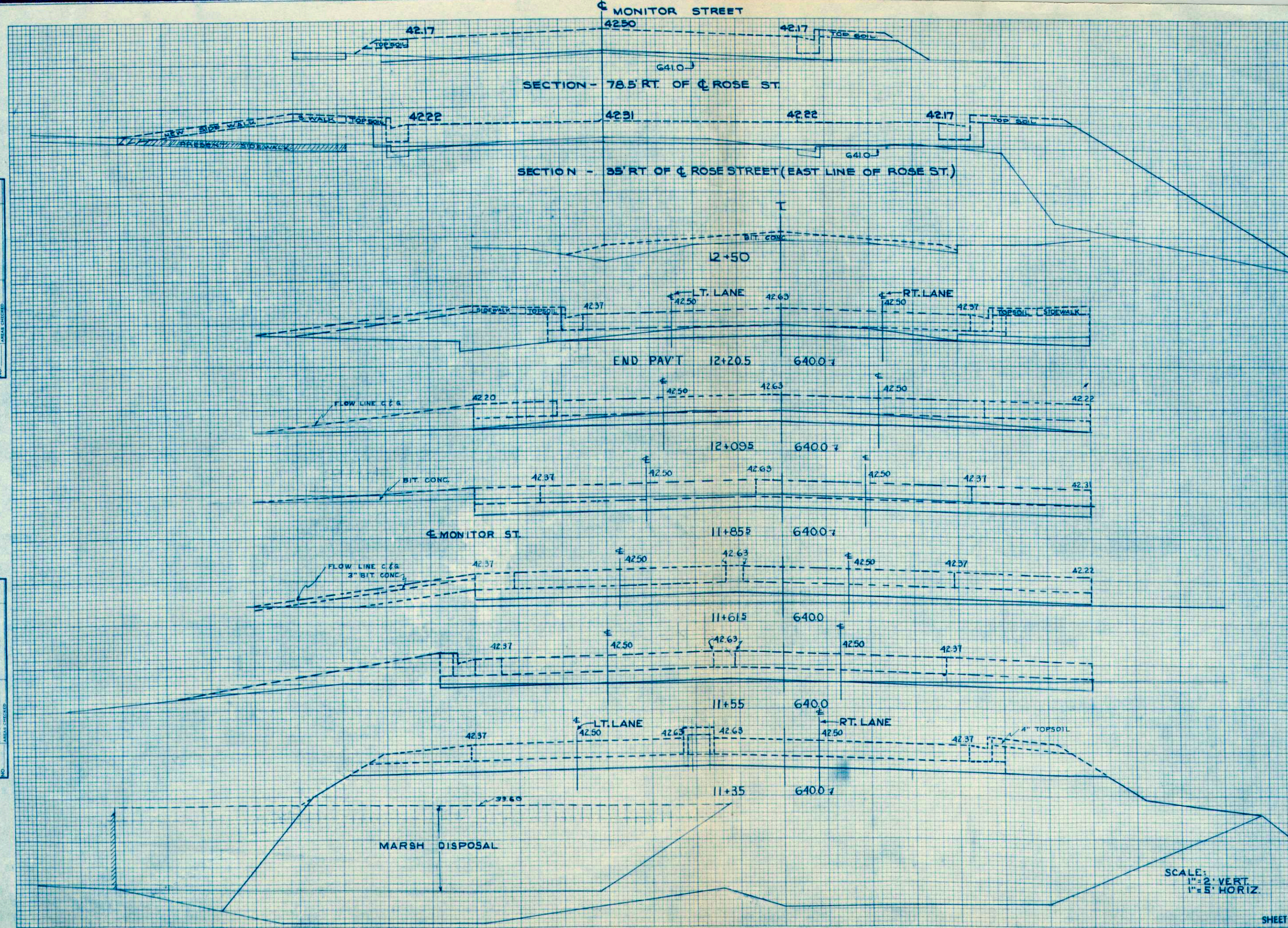
MARSH EXC.

MARSH DISPOSAL

MARSH DISPOSAL

FINAL SURVEY
 BY: _____
 DATE: _____
 REVISIONS:
 1. _____
 2. _____
 3. _____
 4. _____
 5. _____

ORIGINAL SURVEY
 BY: _____
 DATE: _____
 REVISIONS:
 1. _____
 2. _____
 3. _____
 4. _____
 5. _____



STATION	DISTANCE	YARDAGE		
		COMMON UNCL.	MARSH	FILL
11				
				54 950
+ 35				235
+ 55				4
+ 61.5		19		11
+ 85.5		30		
+ 12				
+ 09.5		7		6
+ 20.5				
+ 50				15
EAST-MONITOR ST.				
35 RT. OF C. ROSE ST.		7		120
78.5 RT. OF C. ROSE ST.		2		6
SHEET TOTAL				
				80
				54 1347

SCALE:
 1" = 2' VERT.
 1" = 5' HORIZ.