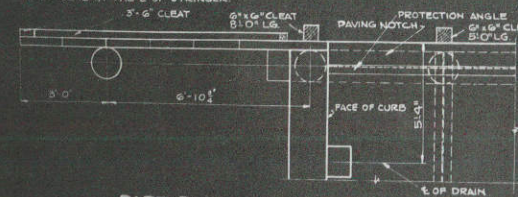


CROSS SECTION OF ROADWAY AND ELEVATION OF NORTH ABUTMENT SOUTH ABUTMENT IS OPPOSITE.



PART PLAN AT ABUTMENT RAILING NOT SHOWN.

BILL OF BARS

NO.	MARK	SIZE	LENGTH	SPACING	LOCATION & DIAGRAM
185	51	20'S	10' CTRS		LONGITUDINAL IN FLOOR AND CURB.
420	52	17'-0"	10' CTRS		TRANSVERSE IN FLOOR.
206	53	15'-0"	10' CTRS		TRANSVERSE IN FLOOR.
110	54	5'-0"	10' CTRS		IN CURB.
28	55	4'-3"	SHOWN		LONGITUDINAL IN PAVEMENT SUPPORT.

BILL OF MATERIAL
TREATED LUMBER

NOMINAL SIZE	NO. OF PIECES	LENGTH	SURFACE	LOCATION
5x6	4	6'-0"	NONE	WING CLEAT
5x6	4	3'-0"	NONE	WING CLEAT
6x6	4	8'-0"	NONE	WING CLEAT
6x6	12	5'-0"	NONE	BODY CLEAT AT PILES
5x6	8	12'-6"	NONE	BENT BRACING
5x6	8	15'-0"	NONE	BENT BRACING
5x6	4	3'-0"	52E	WING BACKING
5x6	4	4'-6"	52E	WING BACKING
5x6	4	6'-0"	52E	WING BACKING
5x10	2	37'-6"	51B	BODY & WING BACKING
5x10	2	46'-6"	NONE	BODY & WING BACKING
5x10	2	48'-6"	NONE	BODY & WING BACKING
5x10	12	8'-0"	NONE	BODY & WING BACKING
5x10	2	13'-0"	51E	BODY & WING BACKING
12x14	2	34'-0"	51E	ABUTMENT CAP
12x14	4	3'-0"	52S1E	BENT CAP

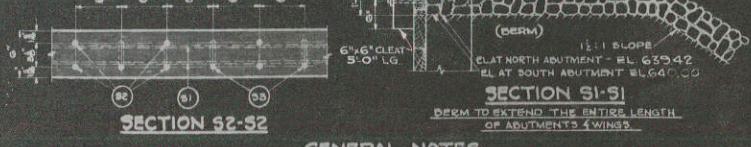
1'-6" x 1'-6" NO. 12 ZINC GAGE ZINC PLATE. PLACE ONE BETWEEN EACH PILE AND BENT CAP AND ABUTMENT CAP. BEND AS SHOWN BY DOTTED LINES.



PILE COVER 18 RQD.

LIST OF DRAWINGS

- 1 ABUTMENT DETAILS
- 2 BENT DETAILS
- 3 RAILING, DRAIN AND PROTECTION ANGLE DETAILS



SECTION S2-S2

SECTION S1-S1

GENERAL NOTES

DRAWINGS SHALL NOT BE SCALED. LEVEL EXPOSED EDGES OF CONCRETE UNLESS OTHERWISE SPECIFIED. ALL TIMBER AND PILING SHALL BE CREOSOTE TREATED BY THE EMPTY CELL PROCESS. SEE SPECIFICATIONS FOR GRADE OF LUMBER. SEE SECTION 500.00 OF THE STANDARD SPECIFICATIONS. TRANSVERSE FLOOR BARS SHALL BE BENT AROUND DRAINS. USE TYPE 'D' RAILING. FOR DETAILS OF RAILING, FLOOR DRAINS AND PROTECTION ANGLE SEE DRAWING G-2. REINFORCING STEEL DIMENSIONS ARE TO FACE OF BAR. ALL HARDWARE SHALL BE HOT GALVANIZED OR CADMIUM PLATED. ALL NAILS AND SPIKES SHALL BE OVAL HEADED AND BARBED. ALL NAILS, SPIKES, BOLTS, NUTS, WASHERS, LAG SCREWS AND DRIFT BOLTS SHALL BE CLASSIFIED AS HARDWARE AND SHALL BE INCLUDED IN THE PRICE BID FOR "TREATED LUMBER AND TIMBER". PILES SHALL BE DRIVEN TO A MINIMUM BEARING VALUE OF 15 TONS PER PILE. PILES SHALL BE 45'-0" LONG. THE NUMBER, LOCATION AND SIZE OF NAILS AND SPIKES NOT SHOWN SHALL BE DETERMINED BY THE ENGINEER. SURFACE WATERPROOFING SHALL BE APPLIED TO THE BACK FACE OF THE CURTAIN WALL. JOINT WATERPROOFING SHALL BE APPLIED AT THE JOINT BETWEEN THE BACK FACE OF THE CURTAIN WALL AND THE TIMBER DACKING. ALL FIELD AND SHOP CONNECTIONS SHALL BE MADE WITH 3/4" RIVETS UNLESS OTHERWISE SPECIFIED. STRUCTURAL STEEL BEARING PLATES SHALL BE FLAT ROLLED STEEL PLATES. CUTS SHALL BE PLANE CUT OR MACHINE CUT. ALL SURFACES SHALL BE SMOOTH AND FREE FROM WARP AND ALL EDGES SHALL BE SMOOTH, STRAIGHT AND VERTICAL.

TOTAL ESTIMATED QUANTITIES

BID ITEMS	QTY
EXCAVATION FOR STRUCTURES	25 C.Y.
CONCRETE MASONRY	75 C.Y.
BAR STEEL REINFORCEMENT	1560 LB.
STRUCTURAL STEEL	65710 LB.
ZINC PLATES	114 LB.
TREATED TIMBER PILING - DELIVERED	1300 LF.
TREATED LUMBER AND TIMBER	652 MBM
FLOOR DRAINS	20 RQD.
WATERPROOFING	125 SF.
RIPRAP	60 C.Y.

APPROXIMATE LENGTH OF TEST PILE 60'-0" LG. - 3 RQD.

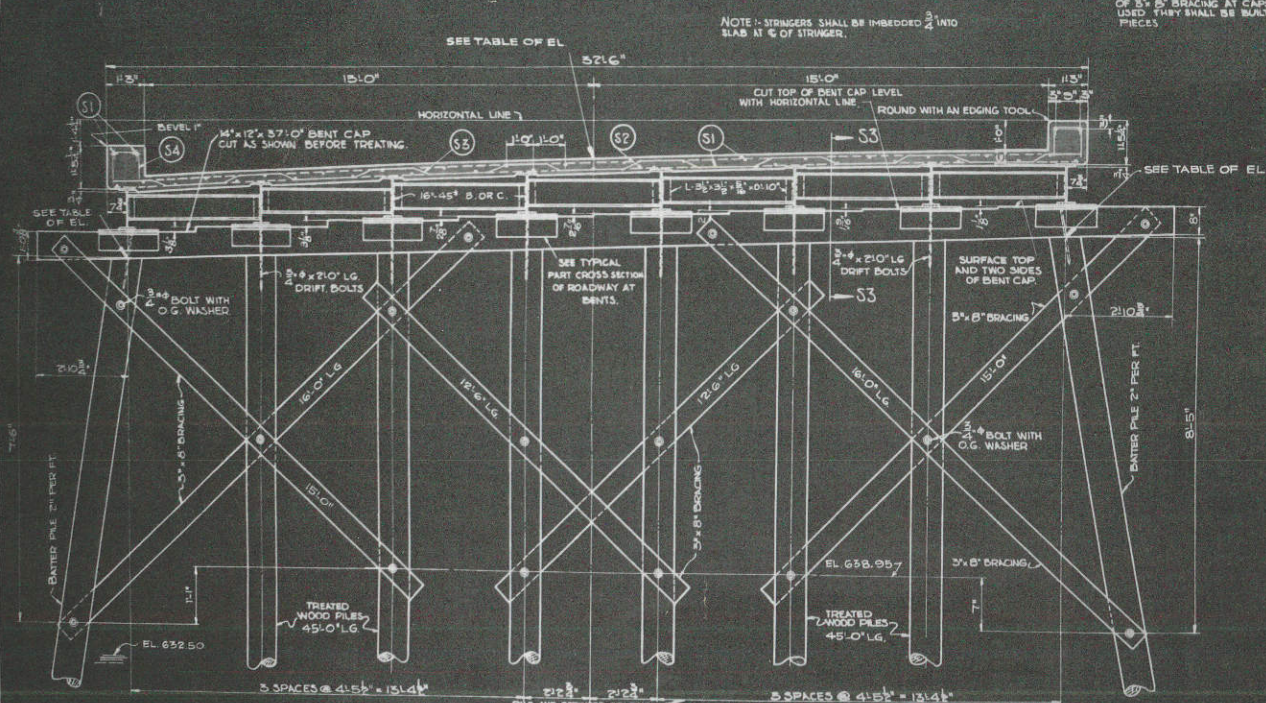
STRUCTURE JOB NO. 5170

WISCONSIN HIGHWAY COMMISSION
DETAILS
FOR
BRIDGE NO. 290
STA. 225+62.34
TOWN OF BERGEN - VERNON COUNTY

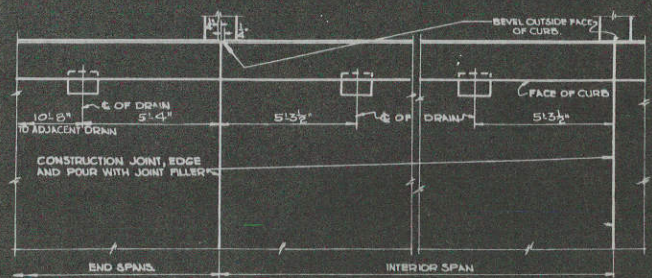
CORRECT: *E. J. [Signature]*
BRIDGE ENGINEER

APPROVED: *P. B. [Signature]*
STATE HIGHWAY ENGINEER

X-7801



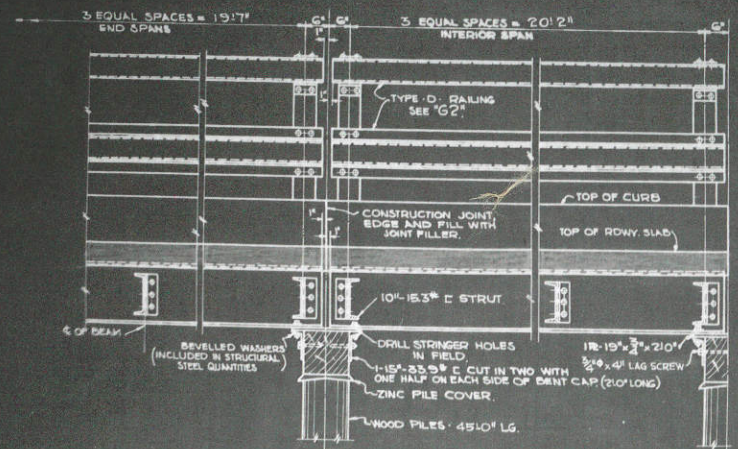
CROSS SECTION OF ROADWAY AND ELEVATION OF BENTS.
LOOKING NORTH



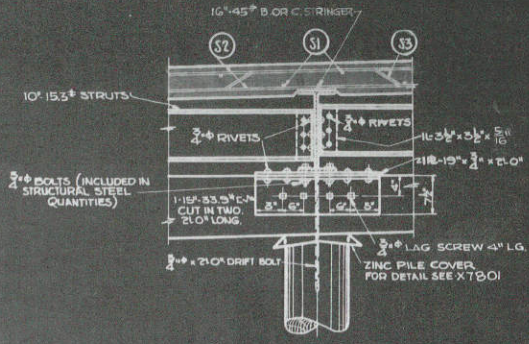
PART PLAN OF ROADWAY.
RAILINGS NOT SHOWN - PLACE DRAINS ON LOW SIDE ONLY. DRAINS HEAD TO.

TABLE OF ELEVATIONS.

LOCATION	STATION	EL. OR GRADE AT C. OF RDWAY	EL. TOP OF PILES AT WEST END	EL. TOP OF PILES AT EAST END
☐ SOUTH ABUT.	225+10.00	647.64	644.04	645.48
☐ BENT 1	225+30.58	647.53	643.93	645.37
☐ BENT 2	225+51.75	647.41	643.81	645.25
☐ BENT 3	225+72.92	647.29	643.69	645.13
☐ BENT 4	225+94.08	647.18	643.58	645.02
☐ NORTH ABUT.	226+14.67	647.06	643.46	644.90



SECTION S3-S3.
REINFORCING STEEL NOT SHOWN.



TYPICAL PART CROSS SECTION OF ROADWAY AT BENT.
SHOWING DETAIL TO BE USED AT EACH PILE AND STRINGER.

NOTE: FOR GENERAL NOTES AND ESTIMATED QUANTITIES SEE X7801

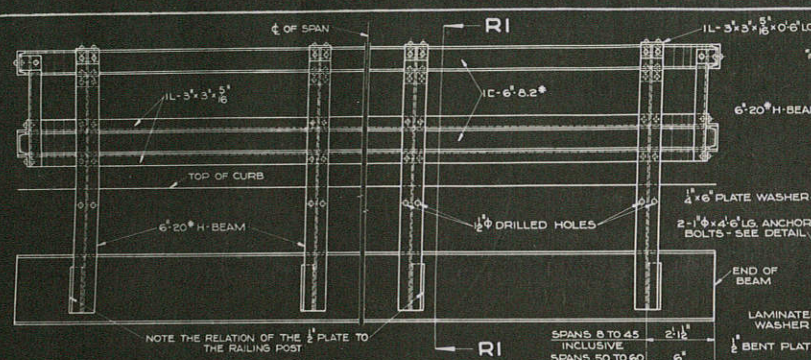
STRUCTURE JOB NO. 5170

WISCONSIN HIGHWAY COMMISSION
FOR
BENT DETAILS
FOR
BRIDGE NO. 290
STA. 225+62.34
TOWN OF BERGEN - VERNO COUNTY

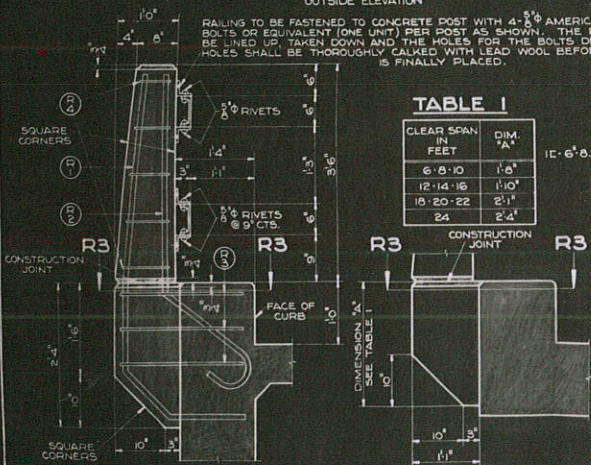
CORRECT: *G. H. Kasper*
BRIDGE ENGINEER

G. H. Kasper
STATE HIGHWAY ENGINEER

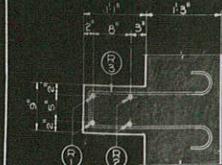
DATE: 11/27/39
DRAWN: *W. H. Kasper*
CHECKED: *G. H. Kasper*



PART ELEVATION OF TYPE "D" RAILING
OUTSIDE ELEVATION



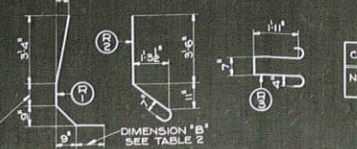
SECTION R2-R2
TYPE "E" RAILING
INSIDE ELEVATION



SECTION R3-R3
TYPE "E" RAILING

TABLE 2

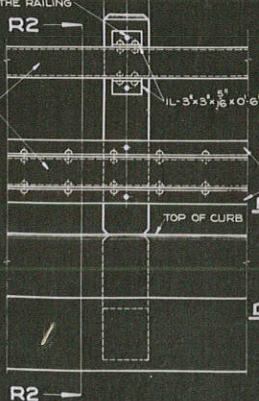
TYPE	DIMENSION 'A'	DIMENSION 'B'
6-8-10	9"	14"
12-14-16	11"	12"
18-20-22	12"	12"
24	15"	12"
ALL DECK GIRTERS	15"	12"



BAR DETAILS
REINFORCING STEEL DIMENSIONS ARE TO ϕ OF BAR

TABLE 1

CLEAR SPAN IN FEET	DIM. 'A'
6-8-10	1'-8"
12-14-16	1'-10"
18-20-22	2'-1"
24	2'-4"



DETAIL OF ANCHOR BOLT
INCLUDED IN STRUCTURAL STEEL



DETAIL OF LAMINATED WASHER

TABLE OF DRAIN SPACING

ROADWAY WIDTH IN FEET	CLEAR SPAN IN FEET											
	6 TO 24 INCLUSIVE	25	30	35	40	45	50	55	60			
20	NONE	2	2	2	2	2	2	2	2	2	2	2
24	NONE	2	2	2	2	2	2	2	2	2	2	2
30	NONE	2	2	2	2	2	2	2	2	2	2	2
36	NONE	2	2	2	2	2	2	2	2	2	2	2
40	NONE	2	2	2	2	2	2	2	2	2	2	2

BILL OF BARS
FOR TYPE "E" RAILING

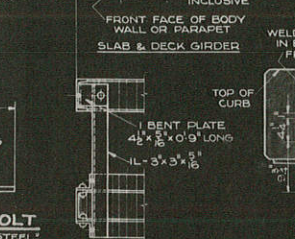
MARK	SIZE	SPACING	LOCATION	CLEAR SPAN IN FEET																							
				SLAB SPANS				DECK GIRDER SPANS																			
				6-8-10	12-14-16	18-20-22	24	20	25-30	35	40	45	50	55	60												
R1	7/8"	SHOWN	VERTICAL IN POSTS - SEE BAR DETAIL	NO.	LENGTH	NO.	LENGTH	NO.	LENGTH	NO.	LENGTH	NO.	LENGTH	NO.	LENGTH	NO.	LENGTH	NO.	LENGTH	NO.	LENGTH	NO.	LENGTH				
R2	7/8"	SHOWN	VERTICAL IN POSTS - SEE BAR DETAIL	6	6'-6"	12	6'-6"	18	6'-9"	20	7'-0"	16	7'-0"	20	7'-0"	24	7'-0"	28	7'-0"	32	7'-0"	36	7'-0"	40	7'-0"	44	7'-0"
R3	1/2"	SHOWN	HORIZONTAL IN POST SUPPORT - SEE BAR DETAIL	8	6'-3"	12	6'-3"	16	6'-3"	20	6'-3"	16	6'-3"	20	6'-3"	24	6'-3"	28	6'-3"	32	6'-3"	36	6'-3"	40	6'-3"	44	6'-3"
R4	1/4"	9'CTS.	STIRRUPS IN POSTS - BEND IN FIELD	12	5'-9"	18	5'-9"	24	5'-9"	30	5'-9"	24	5'-9"	30	5'-9"	36	5'-9"	42	5'-9"	48	5'-9"	54	5'-9"	60	5'-9"	66	5'-9"
				20	3'-0"	30	3'-0"	40	3'-0"	50	3'-0"	40	3'-0"	50	3'-0"	60	3'-0"	70	3'-0"	80	3'-0"	90	3'-0"	100	3'-0"	110	3'-0"

TABLE OF INTERMEDIATE POST SPACING
FOR TYPE "D" AND "E" RAILING

CLEAR SPAN IN FEET	6	8	10	12	14	16	18	20	22	24	25	30	35	40	45	50	55	60
NUMBER OF INTERMEDIATE POSTS (ONE SIDE ONLY)	NONE	NONE	NONE	1	1	2	2	2	2	3	3	3	4	5	6	7	8	9

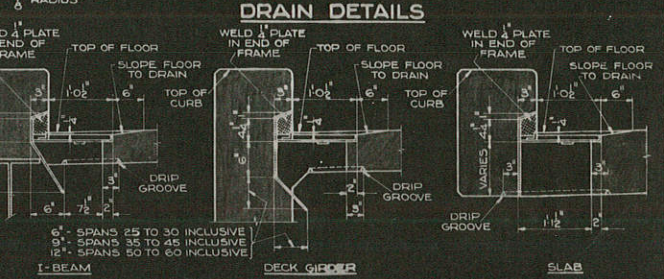
NOTE: POSTS SHALL BE EQUALLY SPACED.

SECTION R1-R1
TYPE "D" RAILING



DETAIL SHOWING END OF RAILING

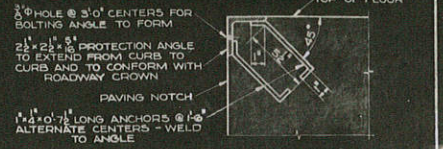
TABLE OF DRAIN SPACING



SECTIONS THRU DRAIN FRAMES

DRAIN DETAILS

NUMBER OF DRAINS AS GIVEN IN TABLE IS FOR COMPLETE SPAN. SPACING FOR DRAINS AS GIVEN IN TABLE IS TO ϕ OF DRAINS. DRAINS SHALL BE SYMMETRICAL ABOUT ϕ OF SPAN. IF STRUTS OR RAILING ANCHOR BOLTS INTERFERE WITH THE DRAINS, THE LATTER SHALL BE MOVED TO CLEAR THE FORMER.



DETAIL OF PROTECTION ANGLE

GENERAL NOTES

ALL SHOP AND FIELD CONNECTIONS SHALL BE 3/4" RIVETS UNLESS OTHERWISE SPECIFIED. RAILING FOR STRUCTURES ON A GRADE SHALL BE BUILT TO VERTICAL LINES. SEE "SPECIAL PROVISIONS" FOR CONCRETE PROPORTIONS.

REVISIONS
L.W.P. 2-7-74
5.19.77

WISCONSIN HIGHWAY COMMISSION
RAILING - DRAIN PROTECTION ANGLE DETAILS

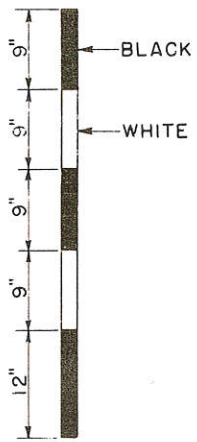
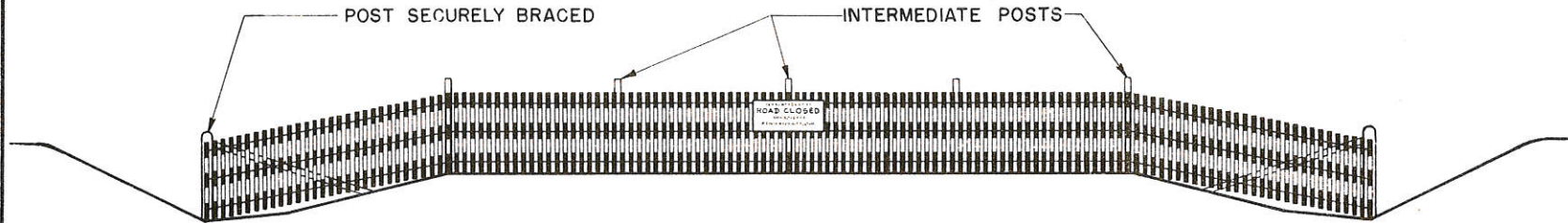
CORRECT
G. H. Fisher
BRIDGE ENGINEER

APPROVED
Z. A. Rettig
STATE HIGHWAY ENGINEER

3-14-35-C.F.E.
3-11-35

SECTION OF SNOW FENCE TO BE PAINTED ALTERNATELY BLACK AND WHITE AS SHOWN BELOW.
 LENGTH TO BE SUFFICIENT TO REACH FROM TOE OF THE BACKSLOPE TO TOE OF THE BACKSLOPE.
 PROVIDE SUFFICIENT NUMBER OF INTERMEDIATE POSTS TO ADEQUATELY SUPPORT THE FENCE.

STANDARD "ROAD CLOSED" SIGN (W.H.C.- NO. R-6) TO BE ERECTED ON FENCE AT THE TOP ON
 THE CENTERLINE OF ROAD.



DETAIL SHOWING METHOD OF STRIPING
 FOR 4' SNOW FENCE.

STATE HIGHWAY COMMISSION OF WISCONSIN	
CONSTRUCTION BARRICADE	
RECOMMENDED FOR APPROVAL:	
<i>Frank Grace</i> DESIGN ENGINEER	
<i>M. Bluk</i> 6/13/35 CONSTRUCTION ENGINEER	
APPROVED:	
DRAWN H M	6/15/35 <i>E.G. Rottgen</i>
CHECKED WHG	DATE STATE HIGHWAY ENGINEER

INDEX OF SHEETS

- SHEET NO. 1 TITLE
- SHEET NO. 2 TYPICAL CROSS SECTIONS
- SHEET NO. 3 ESTIMATE OF QUANTITIES
- SHEET NO. 3-A MISCELLANEOUS QUANTITIES
- SHEET NO. 4-5 RIGHT OF WAY PLAT
- SHEET NO. 6-7 PLAN AND PROFILE STA. 201+00 TO STA. 235+31
- SHEET NO. 8-13 DRAINAGE STRUCTURES AND STANDARD DETAILS
- SHEET NO. 14-23 CROSS SECTIONS

FED. ROAD DIST. NO.	STATE	STATE PROJ. NO.	SHEET NO.	TOTAL SHEETS
4	WISC.	5420	1	23

DIVISION JOB NO. 5420

STATE OF WISCONSIN
WISCONSIN HIGHWAY COMMISSION
 PLAN AND PROFILE OF PROPOSED
STODDARD — LA CROSSE ROAD
 VERNON COUNTY
 5420 STATE PROJECT 5420

BEGINNING AT A POINT NEAR THE S. W. CORNER OF THE SE 1/4 - NW 1/4 OF SECTION 5, T14N, R7W, THENCE NORTHEASTERLY TO A POINT NEAR THE N 1/4 CORNER OF SEC. 5, T14N, R7W

PLAN 1 IN. = 100 FT.
 PROFILE HOR. 1 IN. = 100 FT. VERT. 1 IN. = 10 FT.
 CROSS SECTIONS HOR. 1 IN. = 5 FT. VERT. 1 IN. = 5 FT.

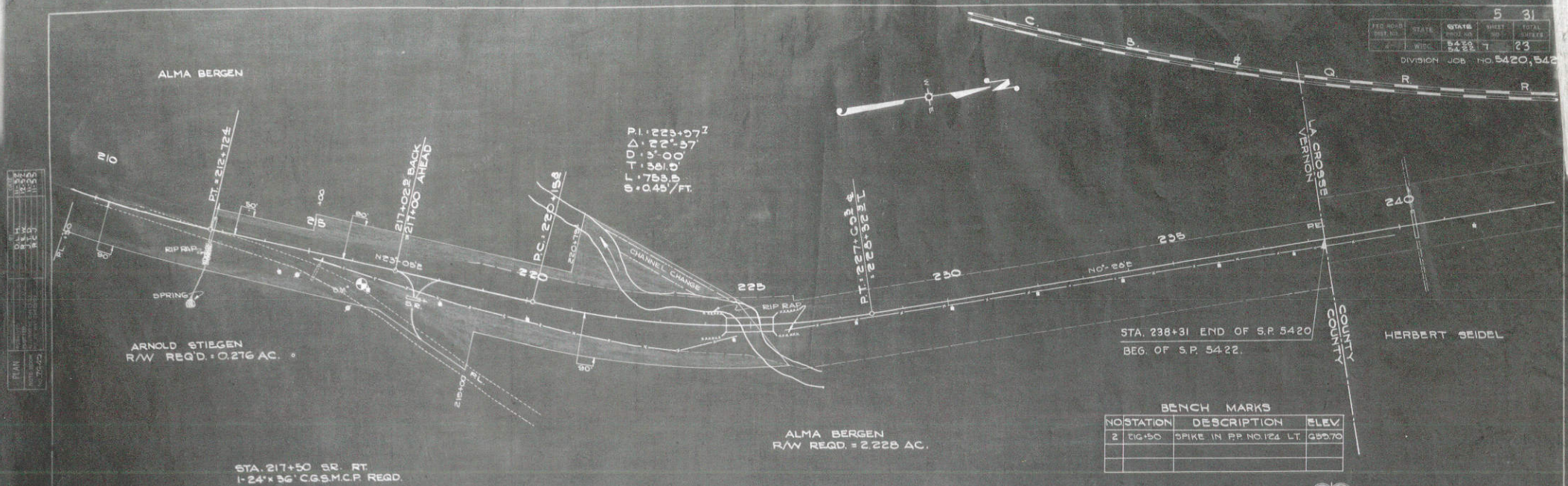


SCALE
 0 1MI 2MI
 TOTAL NET LENGTH OF CENTERLINE - 0.605 MI.

CONVENTIONAL SIGNS

- | | | | |
|---------------------------|---------|-------------------------------|------------|
| STATE LINE | ----- | CULVERTS IN PLACE | ----- |
| COUNTY LINE | ----- | CULVERTS REQUIRED | ----- |
| TOWNSHIP OR RANGE LINE | ----- | DROP INLET | ----- |
| SECTION LINE | ----- | POWER POLE | ----- |
| NEW RIGHT OF WAY LINE | ----- | TELEPHONE OR TELEGRAPH POLE | ----- |
| PRESENT RIGHT OF WAY LINE | ----- | RIGHT OF WAY MARKERS | ----- |
| WIRE FENCE | } WOVEN | REFERENCE STAKE FOR HUBS ONLY | ----- |
| | | MARSH | ----- |
| LOT LINE | ----- | HEDGE | ----- |
| CORPORATE OR CITY LIMITS | ----- | TREES | ----- |
| PROPERTY LINE | ----- | GROUND ELEVATION | DATUM LINE |
| TRAVELED WAY OR P.E. | ----- | GRADE ELEVATION | DATUM LINE |
| RAILROADS | ----- | | |
| BASE OR SURVEY LINE | ----- | | |

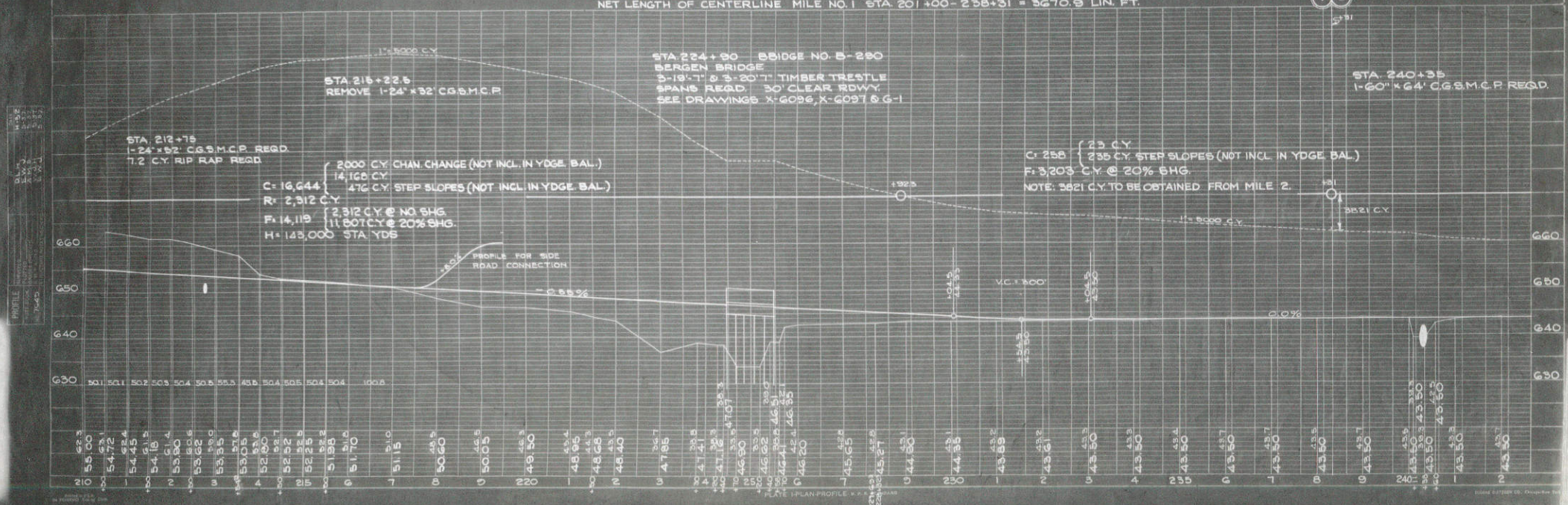
WISCONSIN HIGHWAY COMMISSION MADISON, WIS.		U.S. DEPARTMENT OF AGRICULTURE BUREAU OF PUBLIC ROADS	
Surveyor: D. L. H.	City Engineer: A. M. S.	State Engineer: T. M. Reynolds	Chief Engineer: [Signature]
Dist. Engineer: R. C. J.	State Engineer: [Signature]	Construction Engineer: [Signature]	District Engineer: [Signature]
CORRECTED: T. M. Reynolds		APPROVED: [Signature]	
RECOMMENDED FOR APPROVAL: Frank Brown		DATE: 6/18/37	
APPROVED: E. C. Reilly		PLAN CHECKED IN FIELD BY: R. C. Blank	



PI. 212+07.7
 0.110 Δ
 1.57 Δ
 0.78 Δ
 0.45 Δ
 0.00 / FT.

BENCH MARKS

NO. STATION	DESCRIPTION	ELEV.
2	616+50 SPIKE IN R.P. NO. 124 LT.	650.70



PLAN

DATE	BY	CHECKED
11/11/54	J. H. ...	J. H. ...

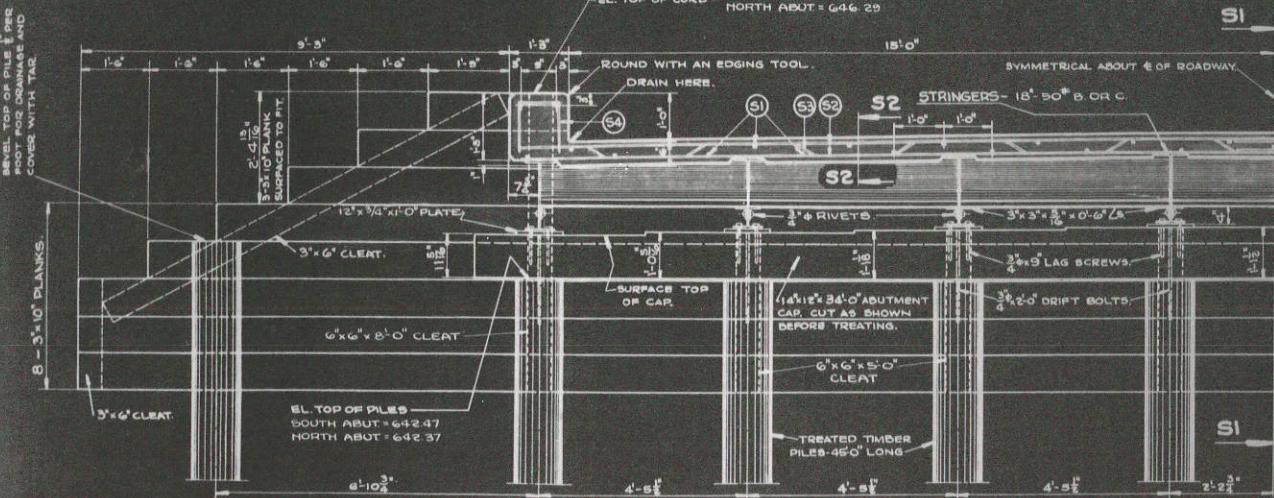
PROFILE

DATE	BY	CHECKED
11/11/54	J. H. ...	J. H. ...

NOTE: - 3x10" BULKHEAD PLANK IN BODY OF ABUTMENT MAY BE SPLICED. SPLICES MUST BE AT $\frac{1}{2}$ OF PILE AND SPLICES MUST BE STAGGERED IN ADJACENT PILES.

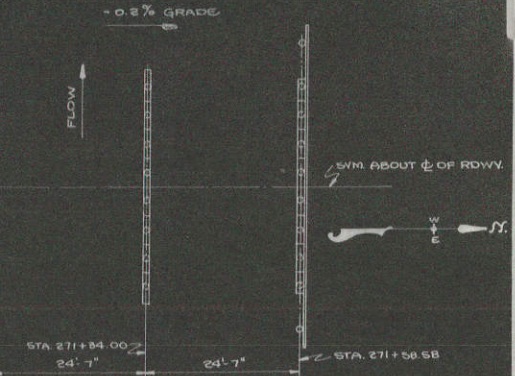
NOTE: - STRINGERS SHALL BE IMBEDDED 1" INTO SLAB AT $\frac{1}{2}$ OF STRINGERS.

BEVEL TOP OF PILE 1" OR PROOF FOR DRAINAGE AND COVER WITH TAR.



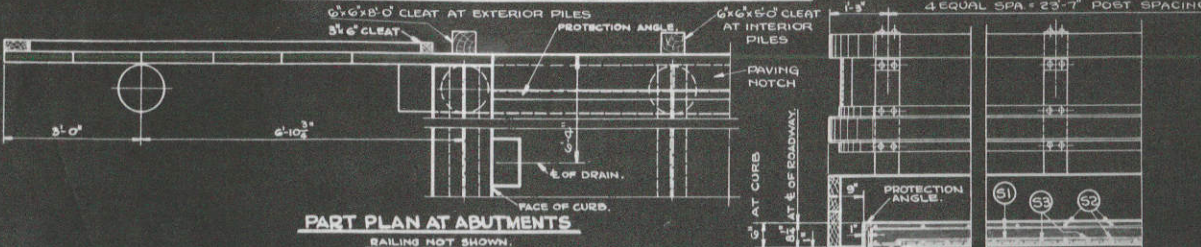
SYMMETRICAL ABOUT $\frac{1}{2}$ OF ROADWAY.

BL. OF GRADE - SOUTH ABUT = 646.53
 NORTH ABUT = 646.48



LOCATION DIAGRAM

HALF CROSS SECTION OF ROADWAY AT ABUTMENTS



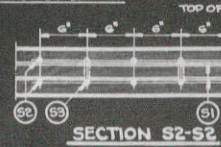
PART PLAN AT ABUTMENTS

BILL OF MATERIAL

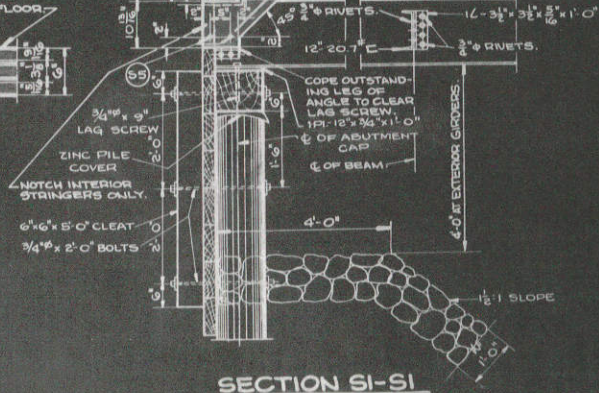
TREATED LUMBER

NOMINAL SIZE	NO OF PIECES	LENGTH	SURFACE	LOCATION
3"x6"	4	5'-0"	NONE	WING CLEAT
3"x6"	4	5'-0"	NONE	WING CLEAT
6"x6"	4	8'-0"	NONE	BODY CLEAT
3"x8"	2	18'-0"	NONE	BENT BRACING
3"x8"	2	14'-0"	NONE	BENT BRACING
3"x10"	4	8'-0"	S2S	WING BRACING
3"x10"	4	4'-0"	S2S	WING BRACING
3"x10"	4	6'-0"	S2S	WING BRACING
3"x10"	2	48'-0"	NONE	BODY & WING BRACING
3"x10"	12	8'-0"	NONE	BODY & WING BRACING
6"x6"	12	5'-0"	NONE	BODY CLEAT
12"x14"	2	34'-0"	S1E	ABUTMENT CAR
	1	37'-0"	S2S1E	BENT CAR

* - MAY BE SPLICED - SEE NOTE ABOVE.



SECTION S2-S2



SECTION S1-S1

BILL OF BARS

NO.	MARK	SIZE	LENGTH	SPACING	LOCATION AND DETAIL
74	S1	1/2"	24'	6" SHOWN	LONGITUDINAL IN FLOOR AND CURB
200	S2	5/8"	17'-0"	10" CTS	TRANSVERSE IN FLOOR
96	S3	3/8"	18'-0"	8" CTS	TRANSVERSE IN FLOOR
52	S4	1/4"	2'-0"	20" CTS	IN CURB
28	S5	3/4"	4'-3"	SHOWN	LONGITUDINAL IN PAVEMENT SUPPORT

LIST OF DRAWINGS

- 1. ABUTMENT DETAILS: X 7799
- 2. BENT DETAILS: X 7800
- 3. RAILING, DRAIN AND PROTECTION ANGLE DETAILS: 62

TOTAL ESTIMATED QUANTITIES

BID ITEMS

EXCAVATION FOR STRUCTURES:	25 CY
CONCRETE MASONRY:	35.7 CY
BAR STEEL REINFORCEMENT:	7510 LB.
STRUCTURAL STEEL:	32300 LB.
ZINC PLATES:	87 LB.
TREATED TIMBER PILING DELIVERED:	1260 LF.
TREATED TIMBER PILING DRIVEN:	1100 LF.
TREATED LUMBER AND TIMBER:	4,160 RBM
FLOOR DRAINS:	8 RQD
WATERPROOFING:	150 SF
RIPRAP:	85 CY

NOTE: APPROXIMATE LENGTH OF TEST PILES = 60' 0" - 2 REQUIRED

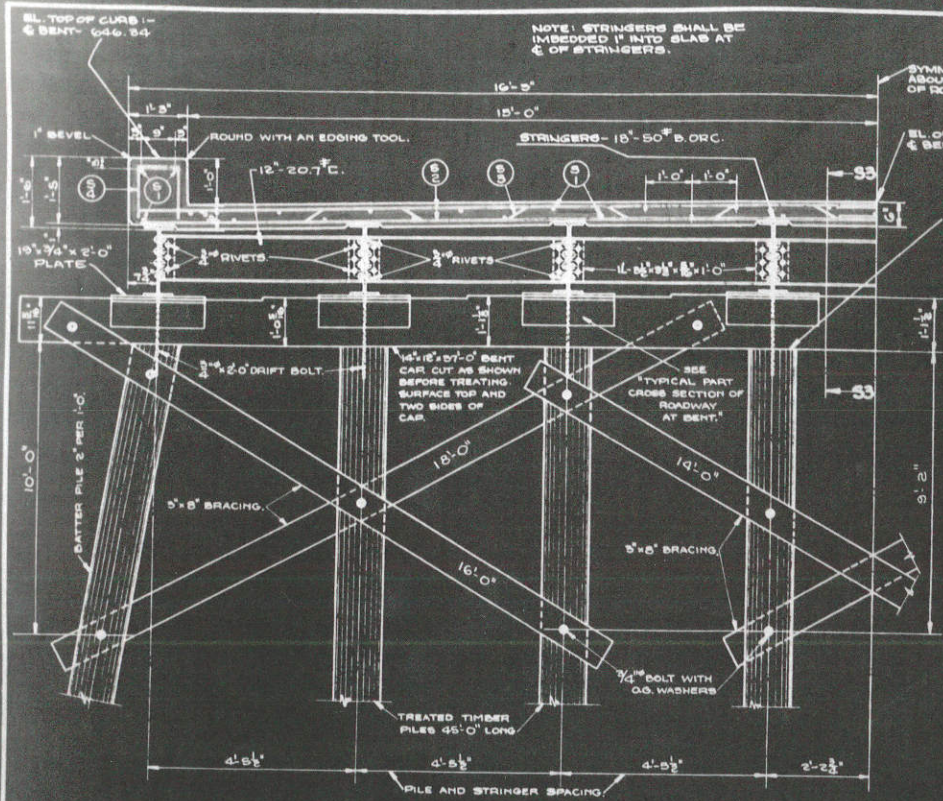
WISCONSIN HIGHWAY COMMISSION
 ABUTMENT DETAILS
 FOR
BRIDGE NO. 291
 STA 271+34.00
 TOWN OF SHELBY - LA CROSSE CO

CORRECTED BY: *C. N. Kaut*
 BRIDGE ENGINEER

APPROVED BY: *R. L. Reardon*
 STRUCTURAL ENGINEER

X 7799

PROJ. NO.	STATE	D. A. PROJ. NO.	SHEET NO.	TOTAL SHEETS
5422	WIS.	5422	3	31
DIVISION JOB NO. 5422				



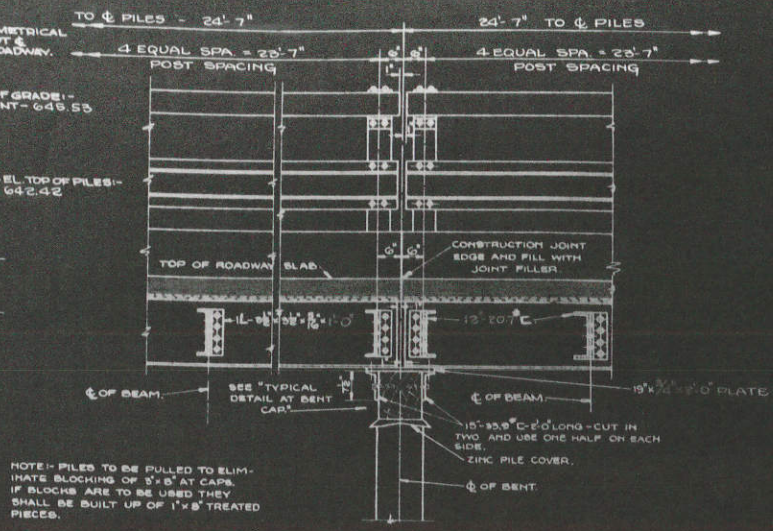
HALF CROSS SECTION OF ROADWAY AT BENTS

RAILING NOT SHOWN - SEE 'G2'
ELEVATIONS ARE AT C/O OF PILES -

GENERAL NOTES

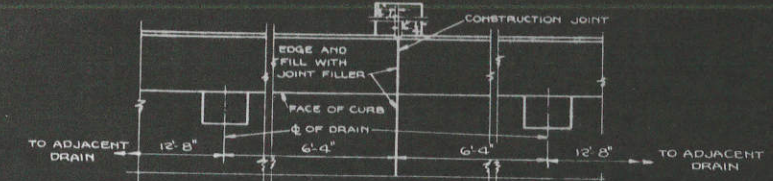
DO NOT SCALE DRAWINGS.
BEVEL EXPOSED EDGES OF CONCRETE 1" UNLESS OTHERWISE SPECIFIED.
THE STRUCTURAL STEEL QUANTITIES ARE BASED ON THE SECTIONS AS SHOWN OR CALLED FOR. IF EQUIVALENT SECTIONS ARE USED OF GREATER WEIGHT THAN THE SECTIONS SHOWN OR CALLED FOR, THE CONTRACTOR MUST BEAR THE ADDITIONAL COST.
TRANSVERSE FLOOR BARS SHALL BE BENT AROUND DRAINS.
USE TYPE 'D' RAILING. FOR DETAILS OF RAILING, FLOOR DRAINS AND PROTECTION ANGLE SEE DRAWING 'G2'.
REINFORCING STEEL DIMENSIONS ARE TO C/O OF BAR.
ALL TIMBER AND PILING SHALL BE CREOSOTE TREATED BY THE EMPTY CELL PROCESS. SEE 'SPECIFICATIONS' FOR GRADE OF LUMBER SEE SECTION 503.02(C) OF THE STANDARD SPECIFICATIONS.
ALL PILES SHALL BE SHOD WITH AN APPROVED STEEL SHOE AND THE PRICE SHALL BE INCLUDED IN THE PRICE BID FOR 'TREATED TIMBER PILING DELIVERED'.
ALL HARDWARE SHALL BE HOT GALVANIZED OR CADMIUM PLATED. ALL NAILS AND SPIKES SHALL BE OVAL HEADED AND BARBED.
ALL NAILS, SPIKES, BOLTS, NUTS, WASHERS, LAG SCREWS, AND DRIFT BOLTS SHALL BE CLASSIFIED AS HARDWARE AND SHALL BE INCLUDED IN THE PRICE BID FOR 'TREATED LUMBER AND TIMBER'.

PILES SHALL BE DRIVEN TO A MINIMUM BEARING VALUE OF 15 TONS PER PILE. PILES SHALL BE 45 FEET LONG.
THE NUMBER, LOCATION AND SIZE OF NAILS AND SPIKES NOT SHOWN SHALL BE DETERMINED BY THE ENGINEER.
SURFACE WATERPROOFING SHALL BE APPLIED TO THE BACK FACE OF THE CURTAIN WALL AND TO THE DRAINING NOTCH. JOINT WATERPROOFING SHALL BE APPLIED AT THE JOINT BETWEEN THE BACK FACE OF THE CURTAIN WALL AND THE TIMBER BACKING.
THE ENDS OF THE STRINGERS SHALL BE CUT SO THAT THE ENDS ARE VERTICAL WHEN THE STRINGERS ARE IN PLACE.
ALL FIELD CONNECTIONS SHALL BE 3/4" RIVETS UNLESS OTHERWISE SPECIFIED.



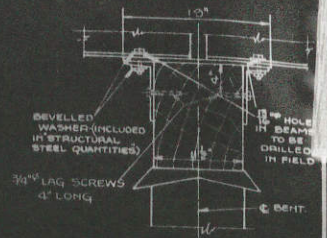
SECTION 33-33

REINFORCING STEEL NOT SHOWN -

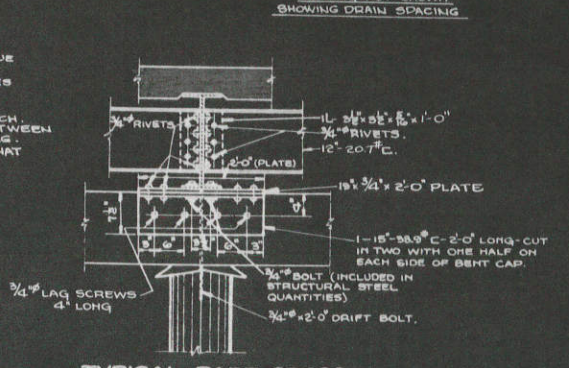


PART PLAN AT BENT

RAILING NOT SHOWN
SHOWING DRAIN SPACING



TYPICAL DETAIL AT BENT CAP



TYPICAL PART CROSS SECTION OF ROADWAY AT BENT

16'-0" x 10'-18 ZINC GAGE PLATE BETWEEN EACH PILE AND BENT CAP. BEND AS SHOWN BY DOTTED LINES.



PILE COVER DETAIL

STRUCTURE JOB NO. 5174

WISCONSIN HIGHWAY COMMISSION
BENT DETAILS
FOR
BRIDGE NO. 291
STA. 271+24.00
TOWN OF SHELBY - LA CROSSE CO.

CORRECTED BY: *G. W. Kish*
BRIDGE ENGINEER

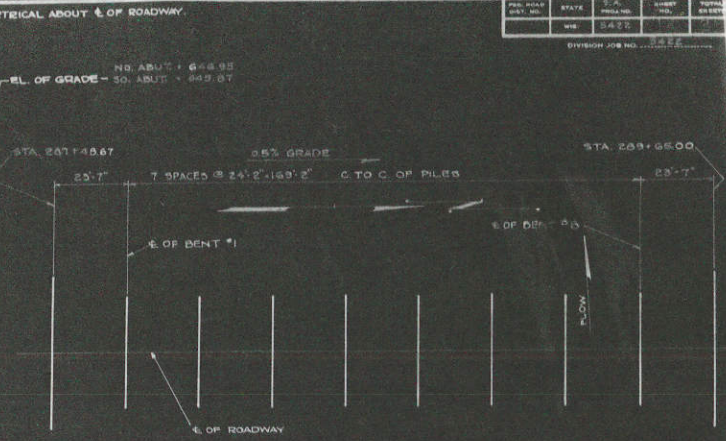
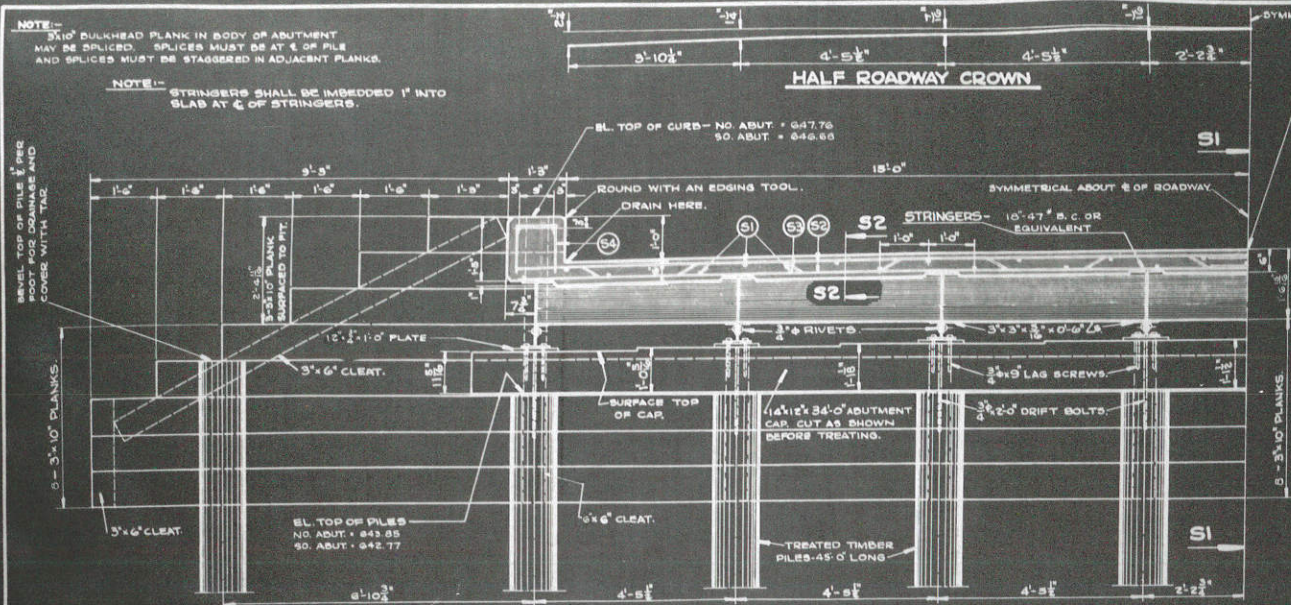
APPROVED BY: *P. L. Rostetter*
STATE HIGHWAY ENGINEER

X 7800

PROJ. DIST. NO.	STATE	F. D. PROJECT NO.	SHEET NO.	TOTAL SHEETS
	5422		17	17

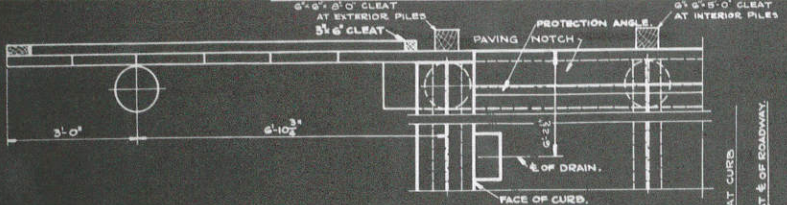
NOTE:
3x10" BULKHEAD PLANK IN BODY OF ABUTMENT MAY BE SPICED. SPLICES MUST BE AT $\frac{1}{2}$ OF PILE AND SPLICES MUST BE STAGGERED IN ADJACENT PLANKS.

NOTE:
STRINGERS SHALL BE IMBEDDED 1" INTO SLAB AT $\frac{1}{2}$ OF STRINGERS.



LAYOUT DIAGRAM

HALF CROSS SECTION OF ROADWAY AT ABUTMENTS



PART PLAN AT ABUTMENTS

BILL OF BARS

NO.	MARK	SIZE	LENGTH	SPACING	LOCATION AND DETAIL
333	S1	1/2"	23'-9"	SHOWN LONGITUDINAL IN FLOOR AND CURB.	
420	S2	5/8"	17'-6"	10' CTS.	TRANSVERSE IN FLOOR.
216	S4	1/2"	3'-0"	2' CTS.	IN CURB.
28	S5	3/4"	4'-3"	SHOWN LONGITUDINAL IN PAVEMENT SUPPORT.	

LIST OF DRAWINGS

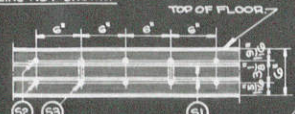
1. ABUTMENT DETAILS: X-7797
 2. BENT DETAILS: X-7750
 3. RAILING, DRAIN AND PROTECTION ANGLE DETAILS: 02

BILL OF MATERIAL

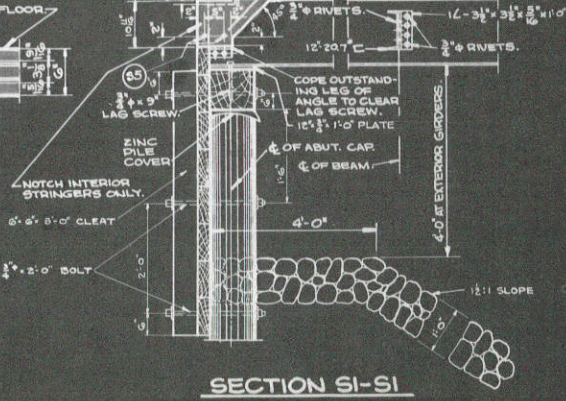
NOMINAL SIZE	NO. OF PIECES	LENGTH	SURFACE	LOCATION
3x6"	4	5'-0"	NONE	WING CLEAT
3x6"	4	9'-6"	NONE	WING CLEAT
6x6"	4	8'-0"	NONE	BODY CLEAT
3x2"	16	11'-0"	NONE	BENT BRACING
3x2"	16	13'-6"	NONE	BENT BRACING
3x2"	16	14'-6"	NONE	BENT BRACING
3x10"	4	3'-0"	S2E	WING BACKING
3x10"	4	4'-6"	S2E	WING BACKING
3x10"	4	6'-0"	S1E	BODY & WING BACKING
3x10"	2	45'-0"	NONE	BODY & WING BACKING
3x10"	2	46'-0"	NONE	BODY & WING BACKING
6x6"	12	5'-0"	NONE	BODY CLEAT
12x10"	2	5'-0"	S1E	ABUTMENT CAP
12x10"	0	37'-0"	S2S1E	BENT CAP

* - MAY BE SPICED - SEE NOTE ABOVE.

SECTION S2-S2



SECTION S1-S1



TOTAL ESTIMATED QUANTITIES

BID ITEMS	QUANTITIES
EXCAVATION FOR STRUCTURES:	25 C.Y.
CONCRETE MASONRY:	149.9 C.Y.
BAR STEEL REINFORCEMENT:	71,460 LB.
STRUCTURAL STEEL:	143,280 LB.
ZINC PLATES:	109 LB.
TREATED TIMBER PILING-DELIVERED:	3700 L.F.
TREATED TIMBER PILING-DRIVEN:	2200 L.F.
TREATED LUMBER AND TIMBER:	5,039 M.D.M.
FLOOR DRAINS:	36 R.Q.D.
WATERPROOFING:	150 S.F.
RIPRAP:	50 C.Y.
APPROXIMATE LENGTH OF TEST PILES:	40'-0" - 5 R.Q.D.

STRUCTURE JOB NO. 5171

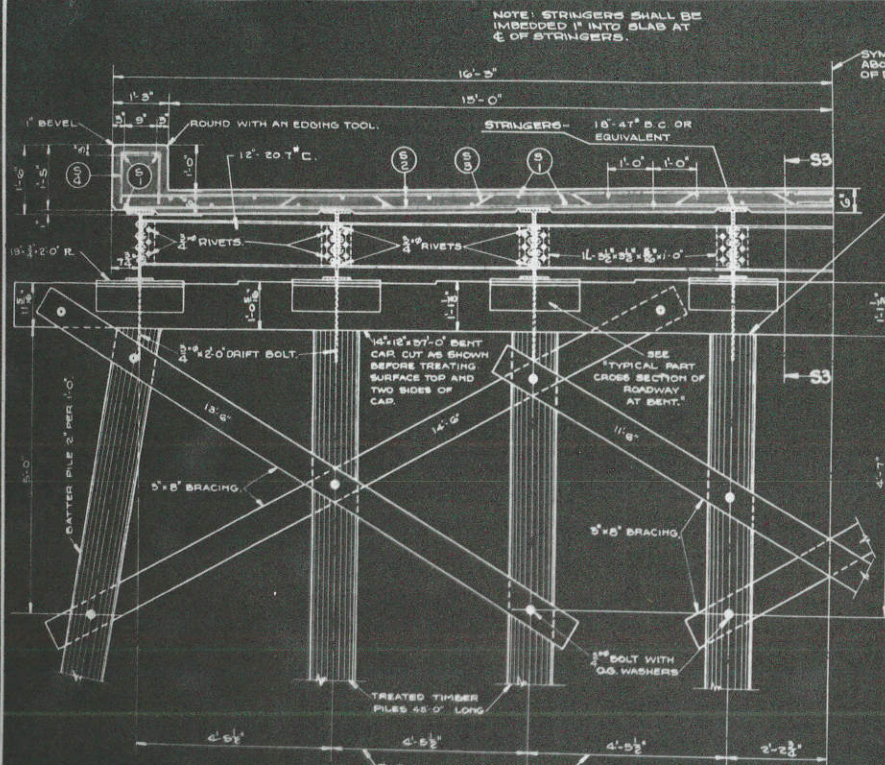
WISCONSIN HIGHWAY COMMISSION
ABUTMENT DETAILS
 FOR
BRIDGE NO. 292
 STA. 259+50.04
 TOWN OF SHELBY - LA CROSSE CO.

CORRECT: *G. J. Kuehl*
 ENGINEER

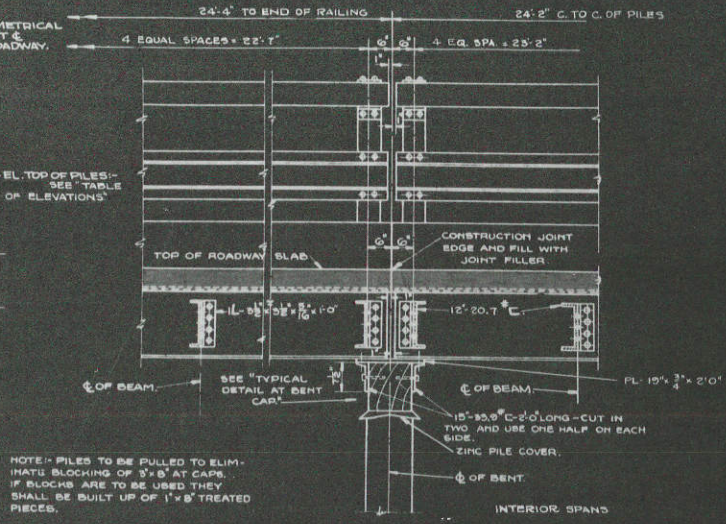
APPROVED: *G. J. Kuehl*
 ENGINEER

STA'S HIGHWAY SUPERVISOR

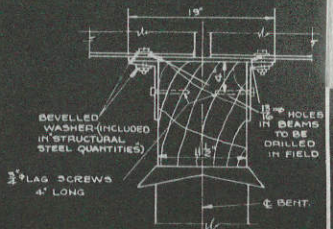
X-7797



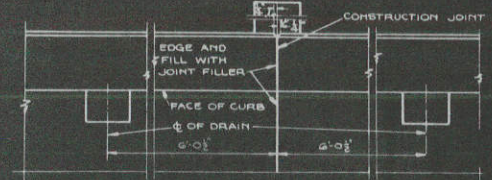
HALF CROSS SECTION OF ROADWAY AT BENTS
RAILING NOT SHOWN - SEE 'G2'
ELEVATIONS ARE AT C. OF PILES



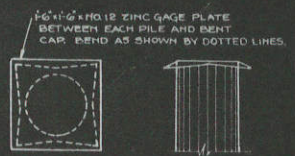
SECTION S3-S3



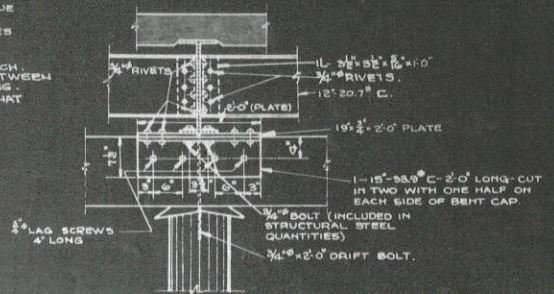
TYPICAL DETAIL AT BENT CAP



PART PLAN AT BENT
RAILING NOT SHOWN
SHOWING DRAIN SPACING



PILE COVER DETAIL
30 - REQUIRED



TYPICAL PART CROSS SECTION OF ROADWAY AT BENT

GENERAL NOTES

DO NOT SCALE DRAWINGS
LEVEL EXPOSED EDGES OF CONCRETE 1" UNLESS OTHERWISE SPECIFIED.

THE STRUCTURAL STEEL QUANTITIES ARE BASED ON THE SECTIONS AS SHOWN OR CALLED FOR. IF EQUIVALENT SECTIONS ARE USED OF GREATER WEIGHT THAN THE SECTIONS SHOWN OR CALLED FOR, THE CONTRACTOR MUST BEAR THE ADDITIONAL COST.

TRANSVERSE FLOOR BARS SHALL BE BENT AROUND DRAINS.

USE TYPE 'D' RAILING. FOR DETAILS OF RAILING, FLOOR DRAINS AND PROTECTION ANGLE SEE DRAWING 'G2'.

REINFORCING STEEL DIMENSIONS ARE TO C. OF BAR. ALL TIMBER AND PILING SHALL BE CREOSOTE TREATED FOR GRADE OF LUMBER SEE SPECIFICATION 'B' STANDARD SPECIFICATIONS.

ALL PILES SHALL BE SHOD WITH AN APPROVED STEEL SHOE AND THE PRICE SHALL BE INCLUDED IN THE PRICE BID FOR 'TREATED TIMBER PILING DELIVERED'.

ALL HARDWARE SHALL BE HOT GALVANIZED OR CADMIUM PLATED. ALL NAILS AND SPIKES SHALL BE OVAL HEADED AND BARBED.

ALL NAILS, SPIKES, BOLTS, NUTS, WASHERS, LAG SCREWS, AND DRIFT BOLTS SHALL BE CLASSIFIED AS HARDWARE AND SHALL BE INCLUDED IN THE PRICE BID FOR 'TREATED LUMBER AND TIMBER'.

PILES SHALL BE DRIVEN TO A MINIMUM BEARING VALUE OF 15 TONS PER PILE. PILES SHALL BE 45 FEET LONG. THE NUMBER, LOCATION AND SIZE OF NAILS AND SPIKES NOT SHOWN SHALL BE DETERMINED BY THE ENGINEER.

SURFACE WATERPROOFING SHALL BE APPLIED TO THE BACK FACE OF THE CURTAIN WALL AND TO THE DRIVING NOTCH. THE ENDS OF THE STRINGERS SHALL BE CUT SO THAT THE ENDS ARE VERTICAL WHEN THE STRINGERS ARE IN PLACE.

ALL FIELD CONNECTIONS SHALL BE 3/4" RIVETS UNLESS OTHERWISE SPECIFIED.

TABLE OF ELEVATIONS

BENT NO.	TOP OF CURB	C. OF ROADWAY	TOP OF PILES
1	646.50	645.99	642.09
2	646.92	646.11	649.01
3	647.04	646.25	643.15
4	647.16	646.35	643.25
5	647.28	646.47	643.37
6	647.40	646.59	643.49
7	647.52	646.71	643.61
8	647.64	646.83	643.73

STRUCTURE JOB NO. 511

WISCONSIN HIGHWAY COMMISSION
BENT DETAILS
FOR
BRIDGE NO. 292
STA. 258+56.84
TOWN OF SHELBY LA CROSSE CO.

CORRECT *G. W. Kish*
BRIDGE ENGINEER

APPROVED *E. J. ...*
STATE HIGHWAY ENGINEER

INDEX OF SHEETS

SHEET NO. 1	TITLE
SHEET NO. 2	TYPICAL CROSS SECTIONS
SHEET NO. 3	ESTIMATE OF QUANTITIES
SHEET NO. 3-A	MISCELLANEOUS QUANTITIES
SHEET NO. 4	RIGHT OF WAY PLAT
SHEET NO. 5-8	PLAN AND PROFILE STA. 25B+31 TO STA. 300+00
SHEET NO. 9-15	DRAINAGE STRUCTURES AND STANDARD DETAILS
SHEET NO. 16-31	CROSS SECTIONS

FED. ROAD DIST. NO.	STATE	STATE PROJ. NO.	SHEET NO.	TOTAL SHEETS
4	WISC.	5422	1	31

DIVISION JOB NO. 5422

STATE OF WISCONSIN
WISCONSIN HIGHWAY COMMISSION

PLAN AND PROFILE OF PROPOSED
STODDARD-LACROSSE ROAD
 LACROSSE COUNTY
 5422 STATE PROJECT 5422

BEGINNING AT A POINT NEAR THE SOUTH 1/4 CORNER OF SEC. 34, T15N. R7W;
 THENCE NORTHERLY TO A POINT NEAR THE NORTH 1/4 CORNER OF SEC.
 34, T15N, R 7W

SCALES | PLAN 1 IN. = 100 FT.
 | PROFILE HOR. 1 IN. = 100 FT. VERT. 1 IN. = 10 FT.
 | CROSS SECTIONS HOR. 1 IN. = 5 FT. VERT. 1 IN. = 5 FT.



SCALE 0 1 RTW 2 MILES
 TOTAL NET LENGTH OF CENTERLINE 1.162 MI.

CONVENTIONAL SIGNS

STATE LINE	---	CULVERTS IN PLACE	—
COUNTY LINE	---	CULVERTS REQUIRED	—
TOWNSHIP OR RANGE LINE	---	DROP INLET	—
SECTION LINE	---	POWER POLE	—
NEW RIGHT OF WAY LINE	---	TELEPHONE OR TELEGRAPH POLE	—
PRESENT RIGHT OF WAY LINE	---	RIGHT OF WAY MARKERS	—
WIRE FENCE	{ WOVEN BARBED	REFERENCE STAKE FOR HUBS ONLY	—
LOT LINE	---	MARSH	—
CORPORATE OR CITY LIMITS	---	HEDGE	—
PROPERTY LINE	PL 1459	TREES	—
TRAVELED WAY OR P.E.	---	GROUND ELEVATION	DATUM LINE
RAILROADS	---	GRADE ELEVATION	DATUM LINE
BASE OR SURVEY LINE	---		

WISCONSIN HIGHWAY COMMISSION MADISON, WIS.		U.S. DEPARTMENT OF AGRICULTURE BUREAU OF PUBLIC ROADS	
Surveyor: R. A. H.	Note Book 76-31-45-56	RECOMMENDED FOR APPROVAL:	
Dist. Computer: Y. A. S.	M. O. Checkler, N. F. C.	DISTRICT ENGINEER	
Dist. Checker: R. C. J.	Correct: 6-4-37	CHIEF ENGINEER	
CORRECT:	<i>T. M. Reynolds</i> DIVISION ENGINEER	APPROVED:	
RECOMMENDED FOR APPROVAL:	<i>Frank Coan</i> DISTRICT ENGINEER	DIRECTOR	
APPROVED:	DATE 4.8.1937	DATE	
	<i>E. G. Reilly</i> STATE HIGHWAY ENGINEER		
CHECKED IN FIELD BY: <i>D. C. Gilman</i>			

ESTIMATE OF QUANTITIES

THIS PROJECT IS TO BE EXECUTED UNDER THE STANDARD SPECIFICATIONS FOR ROAD & BRIDGE CONSTRUCTION OF THE STATE HIGHWAY COMMISSION OF WISCONSIN - EDITION OF 1935.

FED. ROAD DIST. NO.	STATE	STATE PROJ. NO.	SHEET NO.	TOTAL SHEETS
4	WISC.	5422	3	3

MILE NO.	STATION TO STATION	NET LENGTH OF CENTER LINE	EARTH WORK											BASE COURSE	SURFACE COURSES										
			CLEARING	GRUBBING				EXCAVATION				SAND GRAVEL FILL	FINISHING RDWAY		CONCRETE PAVEMENT	CONCRETE HEADERS	LIP CURB			CONC. SURF-ACE DRAIN	CONC. PAVT. REINF.	GRAVEL	CR'D STONE		
				202-1	202-2	203-1	203-2	206-1	206-2	206-3	209-1						210-1	214-1	2"					3"	4"
	ITEM NO.		ACRE	IN DIA.	ACRE	IN DIA.	C.Y.	C.Y.	C.Y.	C.Y.	C.Y.	C.Y.	STA.	SQ. YD.		SQ. YD.	LN. FT.	LN. FT.	LN. FT.	C.Y.	SQ. YD.		C.Y.	C.Y.	
2	238+31-300+00	6135.5	0.27		0.27		34.65	59.24					61.4												4267

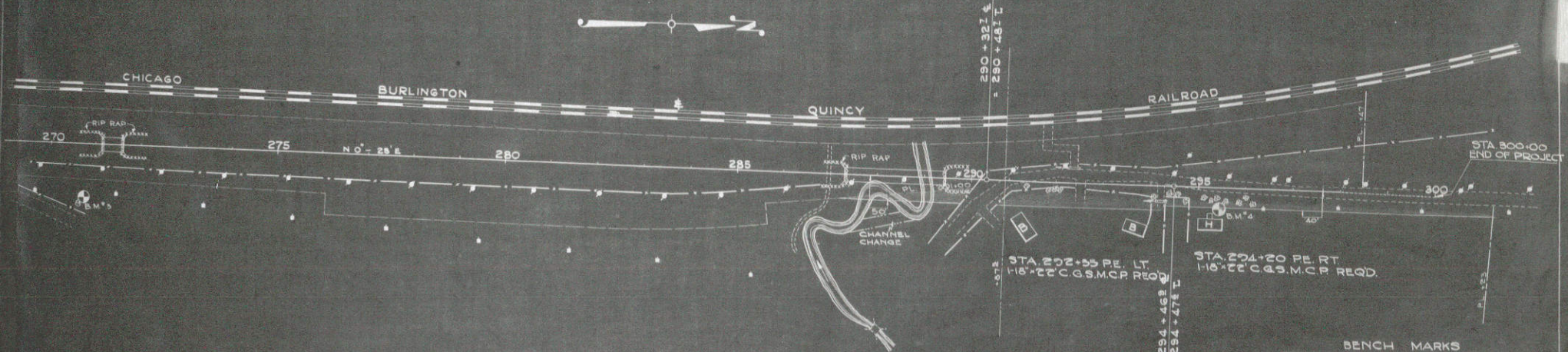
OVERHAUL 418,500 STA. YDS (NOT A BID ITEM)

MILE NO.	BRIDGES (OVER 20' SPAN)														CULVERTS (20' SPAN & UNDER)														
	COM-MON EXCA-VATION	CONC-RETE MAS-ONRY	BAR STEEL REINF.	STRUC-TURAL STEEL	CAST SHEET LEAD	ZINC PLATES	UNTR'D DELIV'D	UNTR'D DRIVEN	TR'T'D DELIV'D	TR'T'D DRIVEN	FLOOR DRAINS	WATER PROOF-ING	RIP RAP	LUMBER & TEST PILING	COM-MON EXCA-VATION	EXCA-VATION	CONC-RETE MAS-ONRY	BAR STEEL REINF.	STRUC-TURAL STEEL	CAST SHEET LEAD	ZINC PLATES	UNTR'D DELIV'D	UNTR'D DRIVEN	TR'T'D DELIV'D	TR'T'D DRIVEN	FLOOR DRAINS	WATER PROOF-ING	RIP RAP	
																													C.Y.
	BRIDGE NO. B-291																												
	25	357	7310	32300			57		1260	1100	8	150		4.16	120														
	BRIDGE NO. B-292																												
	25	148.8	31,260	142,250			189		3780	3280	36	150		8.85	300														
50	184.5	38,570	174,550			246		5040	4380	44	300		13.01	420															

MILE NO.	CULVERT PIPE				INCIDENTAL CONSTRUCTION																												
	18" C.C.P. M.C.P.	24" C.C.P. M.C.P.	36" C.C.P. M.C.P.	60" C.C.P. M.C.P.	PIPE UNDER DRAIN	STORM SEWER		STORM SEWER				CATCH BASINS		MANHOLES		INLETS		CONCRETE CURB		CONC. GUTTER		CONCRETE CURB & GUTTER		SIDEWALK		CABLE TIE GUARD RAIL FENCE FOR POSTS		PROT. MARKER POSTS					
						611-1	614-1	616"	616"	616"	616"	616"	616"	617"(a)	617-2(a)	617-3(a)	618-11	618-21	618-31	619-11	620	1620	51620	61625-1									
2	44	82	116	56	401.4																									4412	20	7	23180

FEED ROAD DIST. NO.	STATE	SECTION	SHEET NO.	TOTAL SHEETS
A	WIS.	5422	8	31

DIVISION JOB NO. 5422

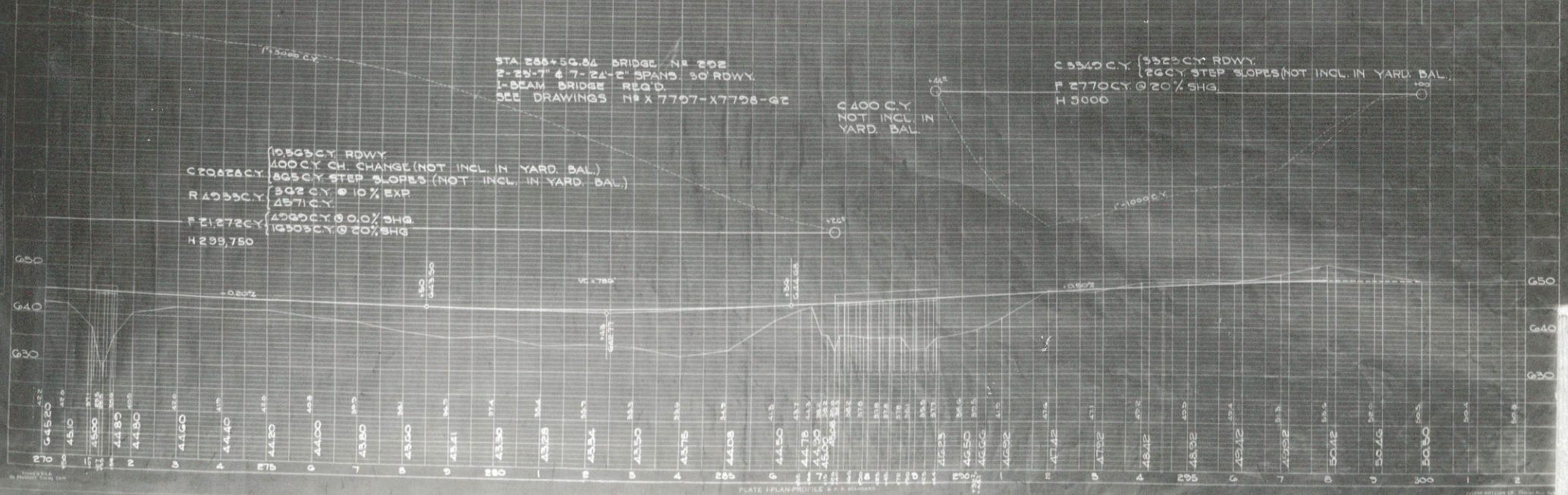


BENCH MARKS

NOTATION	DESCRIPTION	ELEV.
B	270+28 BRK IN ROCT 24'ASH RT 541.93	
H	275+20 CHS U IN FIELD LOWEST STEP IN 452.05	

EDWIN YOUNG ET AL
R/W REQ'D - 0.867AC.

NET LENGTH OF CENTERLINE MILE NO 2 STA 238+31 - 300+00 = 6166.5 LIN. FT



STA 288+50.04 BRIDGE # 202
 P-28-7' 4' 7' 24" SPANS 30' ROWY.
 I-BEAM BRIDGE REQ'D.
 SEE DRAWINGS # X 7707-X7708-02

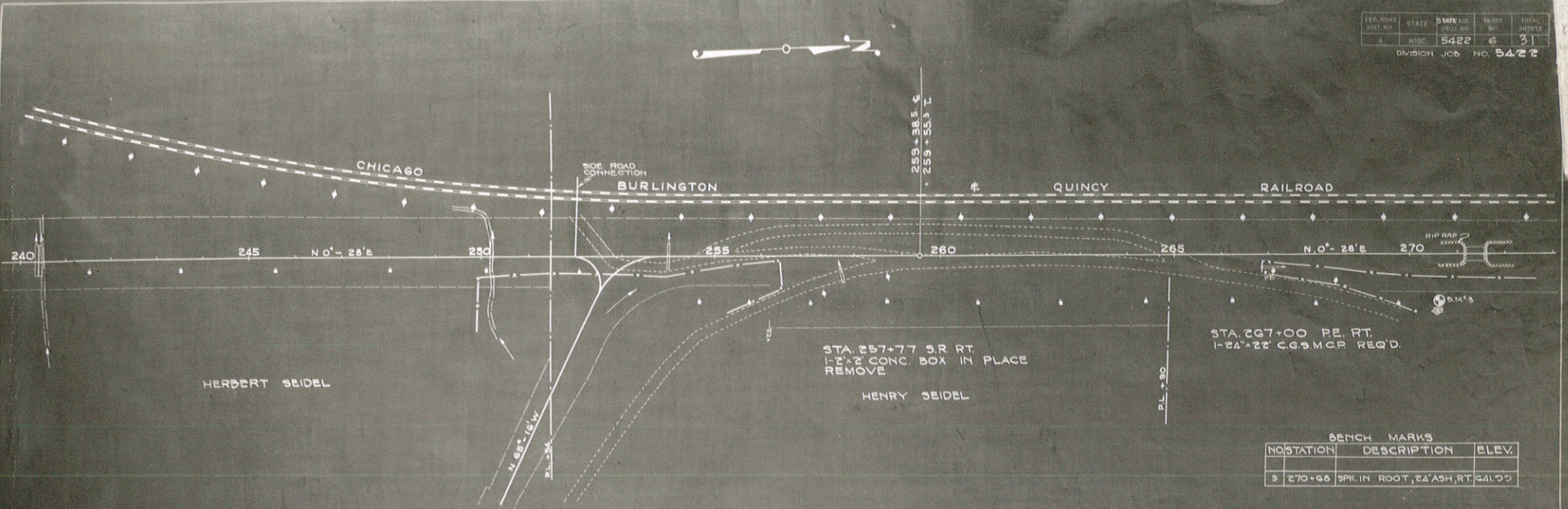
C 5340 C.Y. (5323 C.Y. ROWY.
 166 C.Y. STEP SLOPES (NOT INCL. IN YARD. BAL.)
 F 2770 C.Y. @ 20% SHG.
 H 3000

0 400 C.Y.
 NOT INCL. IN
 YARD. BAL.

1950 C.Y. ROWY.
 400 C.Y. CH. CHANGE (NOT INCL. IN YARD. BAL.)
 C 2062 C.Y.
 805 C.Y. STEP SLOPES (NOT INCL. IN YARD. BAL.)
 R 1935 C.Y. @ 10% EXP.
 457 C.Y.
 F 21,272 C.Y.
 4283 C.Y. @ 0.0% SHG.
 1930 C.Y. @ 20% SHG.
 H 299,750

1" = 50' HORIZ.
 1" = 10' VERT.

PROFILE
 5422



BENCH MARKS

NO.	STATION	DESCRIPTION	ELEV.
3	270+68	SPK. IN ROOT, 24' ASH, RT.	441.75

