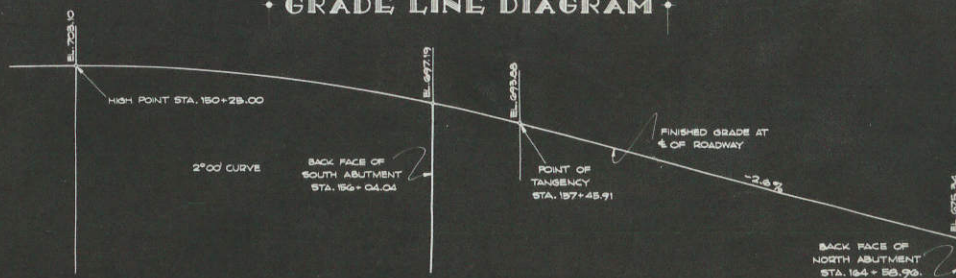


GRADE LINE DIAGRAM



LIST OF DRAWINGS

- 1. GENERAL PLAN - X-7108
- 2. GENERAL LAYOUT - X-7108
- 3. CROSS SECTION - SPANS 1, 2, 3, 4, 5, 6, & 11 - X-7107
- 4. CROSS SECTION - SPANS 7, 8, 9, & 10 - X-7108
- 5. GROSS DETAILS - X-7107
- 6. GROSS DETAILS - X-7110
- 7. TRUSS MAKEUP - X-7111
- 8. TRUSS DETAILS - X-7112
- 9. CURB OFFSETS AND BRACKET DIMENSIONS - X-7113
- 10. DRAINS, RAILINGS, AND EXPANSION DETAILS - X-7114
- 11. BEARINGS DETAILS - X-7115
- 12. BEARINGS DETAILS - X-7116
- 13. DETAILS OF SOUTH ABUTMENT - X-7117
- 14. DETAILS OF NORTH ABUTMENT - X-7118
- 15. DETAILS OF PIER 1 - X-7119
- 16. DETAILS OF PIERS 2 AND 3 - X-7120
- 17. DETAILS OF PIERS 4 AND 5 - X-7121
- 18. DETAILS OF PIERS 6, 7, 8, & 9 - X-7122
- 19. DETAILS OF PIER 10 - X-7123
- 20. BILL OF BILLS - X-7124

PLAN

VERTICAL CLEARANCE AT A = 28'-6"

VERTICAL CLEARANCE AT B = 23'-3"

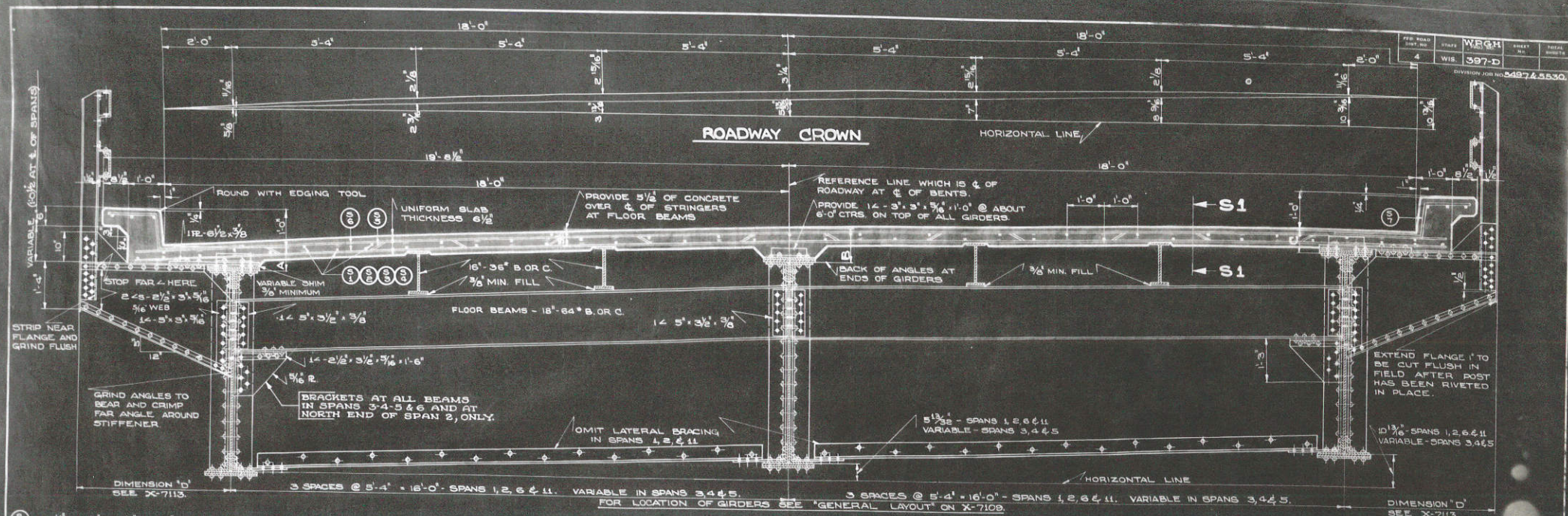
DESIGN DATA

DESIGN DATA IN ACCORDANCE WITH 1935 A.A.H.O. STANDARD SPECIFICATIONS. CONSTRUCTION TO BE IN ACCORDANCE WITH REQUIREMENTS OF 1935 STANDARD SPECIFICATIONS FOR ROAD AND BRIDGE CONSTRUCTION OF THE STATE HIGHWAY COMMISSION OF WISCONSIN.

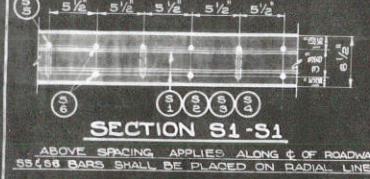
TOTAL ESTIMATE

BID ITEMS	UNIT	SUP
EXCAVATION FOR STRUCTURES	C.Y.	13.75
CONCRETE MASONRY	C.Y.	4.00
BAR STEEL REINFORCEMENT	LB.	85.00
STRUCTURAL STEEL	LB.	579.00
CAST STEEL	LB.	18.00
STEEL FORGINGS	LB.	1.00
SHEET LEAD	LB.	1.00
SHEET COPPER	LB.	1.00
ZINC PLATES	LB.	1.00
UNTREATED TIMBER PILING, DRIVEN	LB.	1.00
STEEL PILING, DELIVERED	LB.	1.00
STEEL PILING, DRIVEN	LB.	1.00
FLOOR DRAINS	ROD	1.00
WATERPROOFING	S.F.	1.00
SP RAP	C.Y.	1.00
NON-BID ITEMS		
EXPANSION JOINT PILING	INCH	1.00

NOTE: THE STRUCTURAL STEEL QUANTITIES CALLED FOR OR SHOWN ON THE DRAWINGS, IN THE SECTIONS AS SHOWN OR CALLED FOR ON THE DRAWINGS.

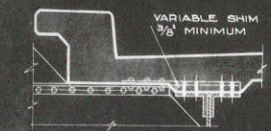
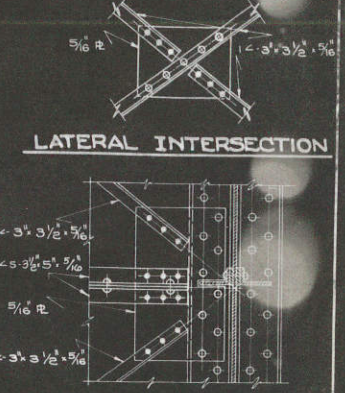
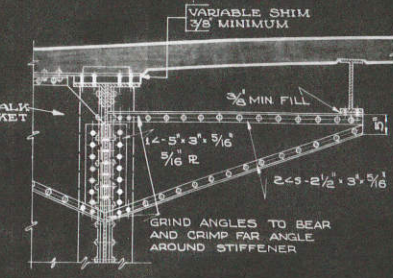
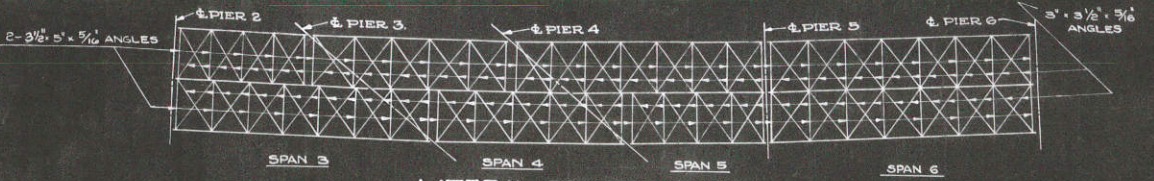


CROSS SECTION OF ROADWAY - SPANS 1, 2, 3, 4, 5, 6 & 11



DIMENSIONS	SPAN NUMBERS										
	1	2	3	4	5	6	11				
A	9 1/8"	9 1/8"	9 1/8"	9 1/8"	9 1/8"	9 1/8"	8 1/2"				
B	1'-0 1/8"	1'-0 1/8"	1'-0 1/8"	1'-0 1/8"	1'-0 1/8"	1'-0 1/8"	11 1/2"				
C	9 1/8"	9 1/8"	9 1/8"	9 1/8"	9 1/8"	9 1/8"	8 1/2"				

ABOVE DIMENSIONS APPLY AT END OF GIRDERS



BID-ITEMS	UNIT	SUPERSTRUCTURE ESTIMATED QUANTITIES											
		GIRDER SPAN NUMBERS						TRUSS SPAN NUMBERS					TOTALS
		1	2	3	4	5	6	11	7	8	9	10	
CONCRETE MASONRY	CY	51.6	42.9	57.2	56.5	57.1	78.7	51.8	88.8	69.4	89.4	88.7	758.1
BAR STEEL REINFORCEMENT	LB	10,740	10,510	12,330	12,190	12,330	12,870	10,890	19,490	19,630	19,630	19,490	164,100
STRUCTURAL STEEL	LB	72,330	75,440	103,490	93,860	103,860	158,190	71,120	194,900	184,400	184,400	189,270	1,428,860
CAST STEEL	LB	2,500	2,520	2,820	2,800	2,820	3,230	2,550	4,130	4,060	4,060	4,130	34,720
STEEL FORGINGS	LB	180	200	200	180	200	280	200	20	20	20	20	1,520
SHEET LEAD	LB	90	99	99	90	99	60	84	175	162	162	175	1,265
SHEET COPPER	LB								30			30	60
ZINC PLATES	LB	300											600
FLOOR DRAINS	NO.	1	2	1		3	2	2	5	5	5	5	31
NON-BID ITEM													
EXPANSION JOINT FILLER	1'								1'			1'	1'

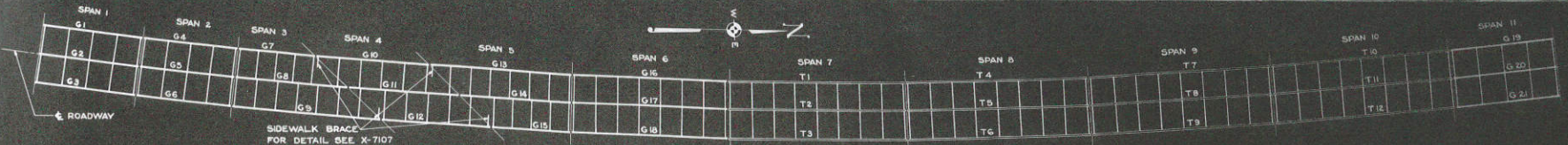
3 OF 20 STRUCTURE 430 NO. 5307

STATE HIGHWAY COMMISSION OF WISCONSIN

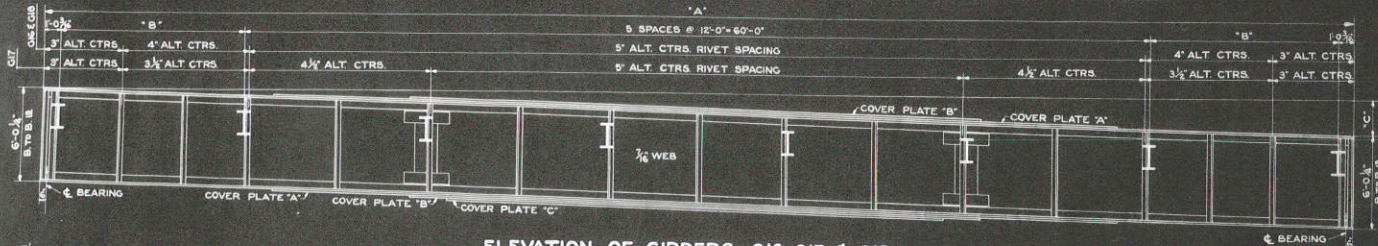
CROSS SECTION SPANS 1, 2, 3, 4, 5, 6, & 11 FOR BRIDGE NO. 115 TOWN OF CAMPBELL - LA CROSSE COUNTY

APPROVED: [Signature]

APPROVED: [Signature]



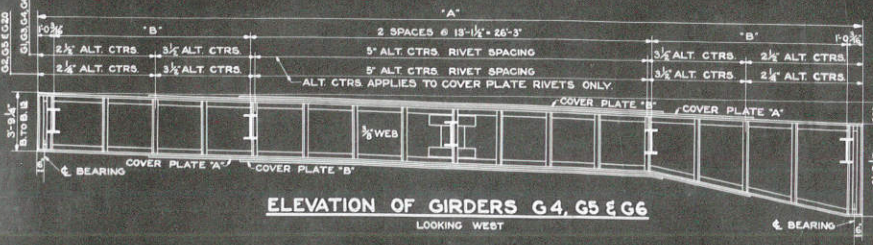
LAYOUT OF FLOOR BEAMS, GIRDERS AND TRUSSES



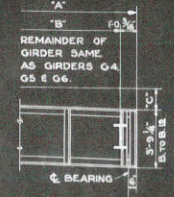
ELEVATION OF GIRDERS G16, G17 & G18
 LOOKING WEST. BOTTOM COVER PLATES SHOWN ARE FOR GIRDER G16. FOR LOCATION OF BOTTOM COVER PLATES ON GIRDERS G17 & G18 SEE DETAIL.



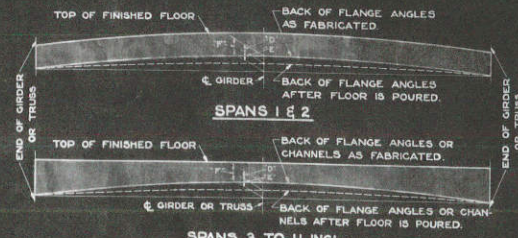
LOCATION OF BOTTOM COVER PLATES ON G17 & G18



ELEVATION OF GIRDERS G4, G5 & G6
 LOOKING WEST



END DETAIL FOR GIRDERS G1, G2, G3, G19, G20 & G21



LONGITUDINAL SECTION THRU FLOOR

CAMBER

GIRDER NUMBER	DIMENSION		
	"D"	"E"	"F"
G1 TO G6 INCL. G19 TO G21 INCL.	1/2"	1/2"	1"
G7 & G15	1/8"	3/8"	1/2"
G8, G10, G11 G12 & G14	3/8"	3/8"	1 1/8"
G9, G13, G16, G17 & G18	3/8"	1"	1 3/8"
TRUSS NUMBER			
T1 TO T12 INCL.	3/8"	1/2"	1 1/8"

DIMENSIONS AND MAKE-UP

ITEM	GIRDER NUMBER																				
	G1	G2	G3	G4	G5	G6	G7	G8	G9	G10	G11	G12	G13	G14	G15	G16	G17	G18	G19	G20	G21
FLANGE ANGLES	218-4x6x1/16	218-4x6x1/16	218-4x6x1/16	218-4x6x1/16	218-4x6x1/16	218-4x6x1/16	218-4x6x3/8	218-4x6x1/16	218-4x6x3/8	218-4x6x1/16	218-4x6x1/16	218-4x6x1/16	218-4x6x3/8	218-4x6x1/16	218-4x6x1/16	218-6x8x1/16	218-6x8x1/16	218-6x8x1/16	218-4x6x1/16	218-4x6x1/16	218-4x6x1/16
COVER PLATE 'A'	14x3/8x38'-0"	14x3/8x40'-0"	14x3/8x38'-0"	14x3/8x38'-0"	14x3/8x40'-0"	14x3/8x35'-0"	14x3/8x42'-0"	14x3/8x44'-0"	14x3/8x60'-0"	14x3/8x38'-0"	14x3/8x44'-0"	14x3/8x38'-0"	14x3/8x60'-0"	14x3/8x44'-0"	14x3/8x40'-0"	18x3/8x56'-0"	18x3/8x58'-0"	18x3/8x56'-0"	14x3/8x38'-0"	14x3/8x40'-0"	14x3/8x38'-0"
COVER PLATE 'B'	14x3/8x25'-0"	14x3/8x25'-0"	14x3/8x25'-0"	14x3/8x25'-0"	14x3/8x25'-0"	14x3/8x25'-0"	14x3/8x30'-0"	14x3/8x30'-0"	14x3/8x40'-0"	14x3/8x31'-0"	14x3/8x31'-0"	14x3/8x31'-0"	14x3/8x40'-0"	14x3/8x30'-0"	14x3/8x40'-0"	18x3/8x35'-0"	18x3/8x38'-0"	18x3/8x38'-0"	14x3/8x25'-0"	14x3/8x25'-0"	14x3/8x25'-0"
COVER PLATE 'C'																10x3/8x33'-0"					
DIMENSION 'A'	54'-1 1/2"	54'-6"	54'-10 3/8"	54'-1 3/8"	54'-6"	54'-10 3/8"	42'-8 5/8"	SHOWN	84'-0 3/8"	65'-5 1/4"	SHOWN	61'-7 3/8"	82'-0 3/8"	SHOWN	43'-2 1/4"	86'-9"	87'-4 3/8"	86'-9"	54'-1 3/8"	54'-6"	54'-10 3/8"
DIMENSION 'B'	12'-10 3/8"	13'-1 3/8"	13'-5 1/8"	12'-11"	13'-1 3/8"	13'-5 3/8"	10'-2 3/8"		11'-8 3/8"	12'-8 1/8"		11'-10 3/8"	11'-5 3/8"		10'-9 3/8"	12'-0 3/8"	12'-4 3/8"	12'-8"	12'-10 3/8"	13'-1 3/8"	13'-8 3/8"
DIMENSION 'C'	1'-2 3/8"	1'-2 3/8"	1'-2 3/8"	1'-3 3/8"	1'-3 3/8"	1'-3 3/8"	1'-3 3/8"	2'-2"		1'-7 3/8"		1'-7 3/8"	2'-1 3/8"		1'-2 3/8"	2'-2 3/8"	2'-3 3/8"	2'-3 3/8"	1'-4 3/8"	1'-5"	1'-5 1/8"
END STIFFENERS	48-3x5x3/8 1/2 FILL	48-3x5x3/8 1/2 FILL	48-3x5x3/8 1/2 FILL	48-3x5x3/8 1/2 FILL	48-3x5x3/8 1/2 FILL	48-3x5x3/8 1/2 FILL	48-3x5x3/8 1/2 FILL	48-3x5x3/8 1/2 FILL	48-3x5x3/8 1/2 FILL	48-3x5x3/8 1/2 FILL	48-3x5x3/8 1/2 FILL	48-3x5x3/8 1/2 FILL	48-3x5x3/8 1/2 FILL	48-3x5x3/8 1/2 FILL	48-3x5x3/8 1/2 FILL	48-3x5x3/8 1/2 FILL	48-3x5x3/8 1/2 FILL	48-3x5x3/8 1/2 FILL	48-3x5x3/8 1/2 FILL	48-3x5x3/8 1/2 FILL	48-3x5x3/8 1/2 FILL
INTERMEDIATE STIFFENERS	28-3x5x3/8 1/2 FILL	28-3x5x3/8 1/2 FILL	28-3x5x3/8 1/2 FILL	28-3x5x3/8 1/2 FILL	28-3x5x3/8 1/2 FILL	28-3x5x3/8 1/2 FILL	28-3x5x3/8 1/2 FILL	28-3x5x3/8 1/2 FILL	28-3x5x3/8 1/2 FILL	28-3x5x3/8 1/2 FILL	28-3x5x3/8 1/2 FILL	28-3x5x3/8 1/2 FILL	28-3x5x3/8 1/2 FILL	28-3x5x3/8 1/2 FILL	28-3x5x3/8 1/2 FILL	28-3x5x3/8 1/2 FILL	28-3x5x3/8 1/2 FILL	28-3x5x3/8 1/2 FILL	28-3x5x3/8 1/2 FILL	28-3x5x3/8 1/2 FILL	28-3x5x3/8 1/2 FILL
WEB SPLICE	PLATE 'A' 8x3/8x3'-0"	8x3/8x3'-0"	8x3/8x3'-0"	8x3/8x3'-0"	8x3/8x3'-0"	8x3/8x3'-0"	8x3/8x3'-0"	8x3/8x3'-0"	8x3/8x3'-0"	8x3/8x3'-0"	8x3/8x3'-0"	8x3/8x3'-0"	8x3/8x3'-0"	8x3/8x3'-0"	8x3/8x3'-0"	8x3/8x3'-0"	8x3/8x3'-0"	8x3/8x3'-0"	8x3/8x3'-0"	8x3/8x3'-0"	8x3/8x3'-0"
PLATE 'B'	15x3/8	15x3/8	15x3/8	15x3/8	15x3/8	15x3/8	15x3/8	15x3/8	15x3/8	15x3/8	15x3/8	15x3/8	15x3/8	15x3/8	15x3/8	15x3/8	15x3/8	15x3/8	15x3/8	15x3/8	15x3/8
RIVETS	PLATE 'A' 34	34	34	34	34	34	34	34	34	34	34	34	34	34	34	34	34	34	34	34	34
PLATE 'B'	36	36	36	36	36	36	36	36	36	36	36	36	36	36	36	36	36	36	36	36	36

FOR DETAILS SEE X-710

5 OF 20

STRUCTURE JOB NO. 5307

STATE HIGHWAY COMMISSION OF WISCONSIN

GIRDER DETAILS FOR BRIDGE NO. 115 TOWN OF CAMPBELL-- LA CROSSE COUNTY

CONTRACTOR: E. J. Kull

APPROVED: E. J. Kull

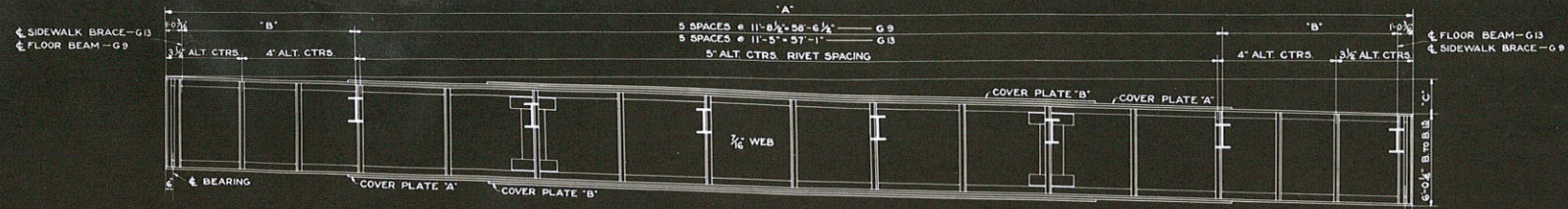
DATE: 11-20-38

DRAWN: BHW

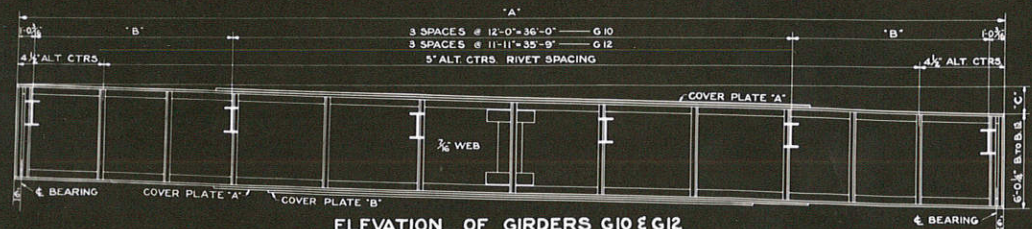
CHECKED: RES

STATE HIGHWAY COMMISSION

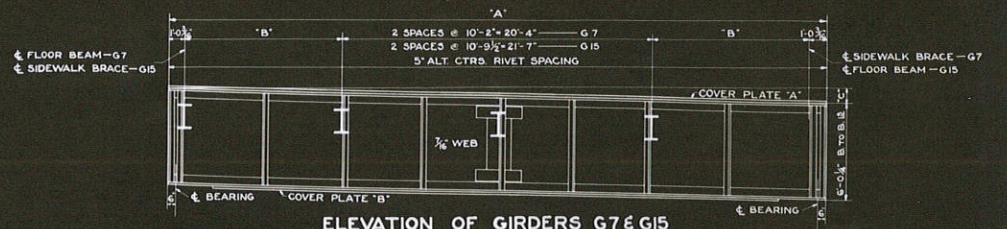
X7109



ELEVATION OF GIRDERS G9 & G13
LOOKING WEST



ELEVATION OF GIRDERS G10 & G12
LOOKING WEST



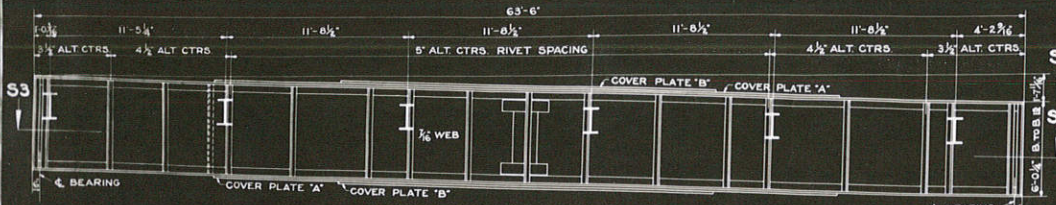
ELEVATION OF GIRDERS G7 & G15
LOOKING WEST



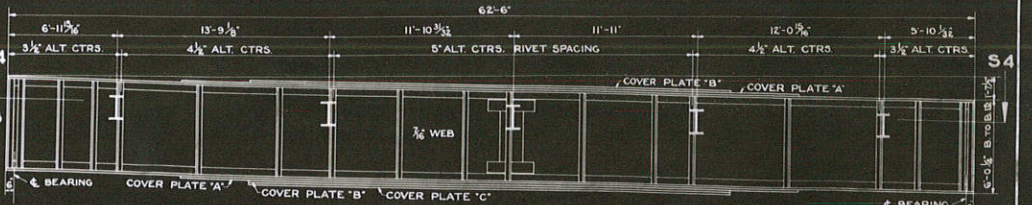
SECTION S3-S3



SECTION S4-S4



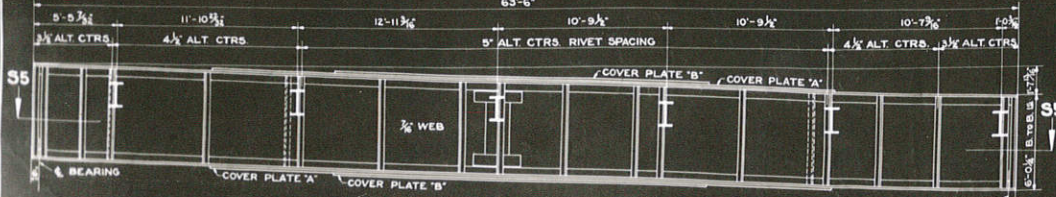
ELEVATION OF GIRDER G8
LOOKING WEST



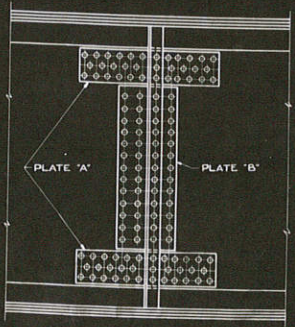
ELEVATION OF GIRDER G11
LOOKING WEST



SECTION S5-S5



ELEVATION OF GIRDER G14
LOOKING WEST



TYPICAL WEB SPLICE
FLOOR BEAM NOT SHOWN

NOTE

- ALL RIVETS SHALL BE 3/4\"/>
- RIVETS IN ALL END AND INTERMEDIATE STIFFENERS SHALL BE SPACED AT 5\"/>
- ALL STIFFENERS AND WEB SPLICES SHALL BE BUILT TO VERTICAL LINES
- ALL COVER PLATES SHALL BE SYMMETRICAL ABOUT GIRDER UNLESS OTHERWISE SPECIFIED
- COVER PLATE RIVETS SHALL BE STAGGERED WITH WEB RIVETS.

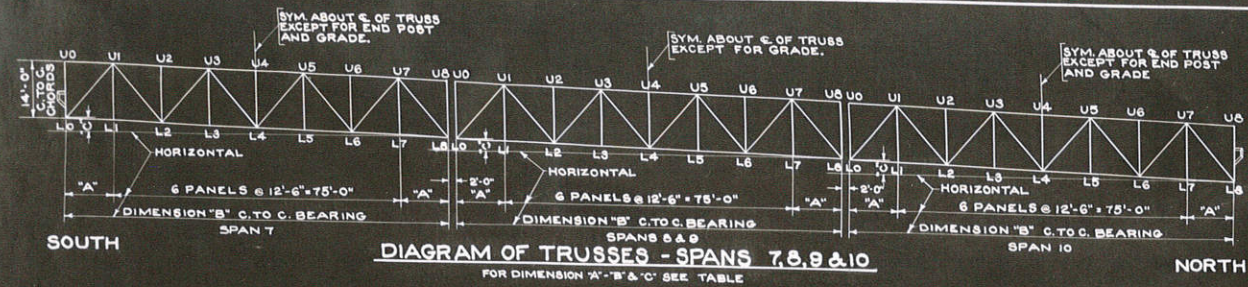


DIAGRAM OF TRUSSES - SPANS 7, 8, 9 & 10
 FOR DIMENSION "A" "B" & "C" SEE TABLE

STRESS AND MAKEUP OF EXTERIOR TRUSSES
 SPANS 7, 8, 9 & 10

MEMBER	STRESS IN KIPS					TOTAL STRESS DIRECT BENDING IN KIPS IN FT. KIPS	MAKEUP
	DEAD LOAD	LIVE LOAD	IMPACT	FUTURE SW/LIVE LOAD	TOTAL		
U0 - U1	0	0	0	0	0	46.5	2ES-12" .30" - 1R-16" x 3/8"
U1 - U3	-128.5	-85.9	-12.4	-14.6	-211.4	36.8	2ES-12" .30" - 1R-16" x 3/8"
U3 - U5	-171.5	-74.4	-16.5	-19.5	-281.9	36.8	2ES-12" .30" - 1R-16" x 3/8"
L0 - L2	+74.9	+32.5	+7.2	+8.5	+123.1	—	2ES-12" .30" #
L2 - L4	+191.0	+69.8	+16.5	+18.3	+275.6	—	2ES-12" .35" #
L0 - U1	-112.5	-56.7	-12.6	-12.8	-194.6	—	4L-16" x 3 1/2" x 1/2" - 1R-10" x 5/8" 10% B.T.O.B.
U1 - L2	+80.4	+45.3	+11.0	+9.6	+146.3	—	10" .41" B. OR C.
L2 - U3	-48.2	-35.0	-9.0	-6.9	-99.1	—	10" .37" B. OR C.
U3 - L4	+16.1	-17.6	+5.2	-2.7	-9.4	—	10" .33" B. OR C.
U0 - L0 SPAN 7	—	—	—	—	—	—	SEE DETAIL ON X7112
U0 - L0 SPANS 8, 9, 10	-12.0	-25.1	-7.5	-1.4	-46.0	—	4L-3 1/2" x 4" x 3/4" 2R-12" x 1" - 1R-10 1/2" x 1"
U8 - L8 SPANS 7, 8, 9	-12.0	-25.1	-7.5	-1.4	-46.0	—	10" .33" B. OR C.
U8 - L8 SPAN 10	—	—	—	—	—	—	SEE DETAIL ON X7112
L1 - U1	0	0	0	0	0	—	4L-3" x 3" x 1/2" 2R-12" x 1/2" - 1R-10" x 1/2"
L2 - U2	-24.0	-26.4	-8.5	-2.7	-63.6	—	10" .33" B. OR C.
L3 - U3	0	0	0	0	0	—	10" .33" B. OR C.
L4 - U4	-24.0	-26.4	-8.5	-2.7	-63.6	—	10" .33" B. OR C.

STRESS AND MAKEUP OF INTERIOR TRUSSES
 SPANS 7, 8, 9 & 10

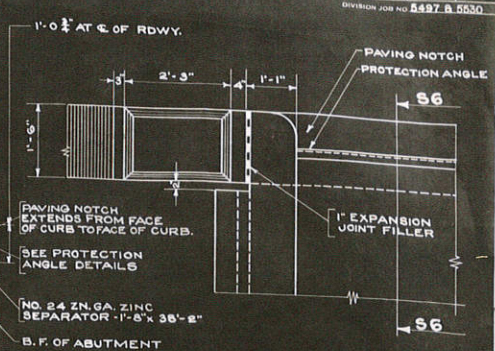
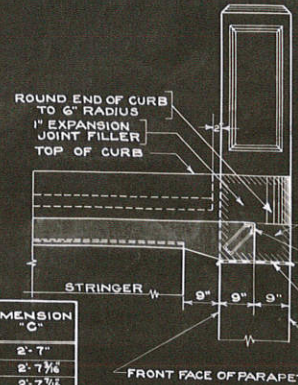
MEMBER	STRESS IN KIPS					TOTAL STRESS DIRECT BENDING IN KIPS IN FT. KIPS	MAKEUP
	DEAD LOAD	LIVE LOAD	IMPACT	FUTURE SW/LIVE LOAD	TOTAL		
U0 - U1	0	0	0	0	0	40.5	2ES-12" .30" - 1R-16" x 3/8"
U1 - U3	-139.5	-79.4	-17.6	-23.5	-239.5	34.1	2ES-12" .30" - 1R-16" x 3/8"
U3 - U5	-185.5	-105.5	-23.8	-31.4	-314.5	34.1	2ES-12" .30" - 1R-16" x 3/8"
L0 - L2	+81.2	+46.2	+10.3	+13.7	+151.9	—	2ES-12" .20" #
L2 - L4	+174.0	+99.2	+22.1	+29.3	+324.6	—	2ES-12" .40" #
L0 - U1	-122.0	-60.6	-17.9	-22.5	-223.0	—	4L-6" x 3 1/2" x 1/2" - 1R-10 1/2" x 5/8" 10% B.T.O.B.
U1 - L2	+87.1	+64.4	+15.6	+19.7	+126.8	—	10" .45" B. OR C.
L2 - U3	-52.2	-42.6	-12.6	-11.4	-118.8	—	10" .41" B. OR C.
U3 - L4	+17.4	-25.0	+7.5	-15.1	-15.1	—	10" .33" B. OR C.
U0 - L0 SPAN 7	—	—	—	—	—	—	SEE DETAIL ON X7112
U0 - L0 SPANS 8, 9, 10	-13.0	-35.8	-10.7	-5.2	-64.7	—	4L-3 1/2" x 4" x 3/4" 2R-12" x 1" - 1R-10 1/2" x 1"
U8 - L8 SPANS 7, 8, 9	-13.0	-35.8	-10.7	-5.2	-64.7	—	10" .33" B. OR C.
U8 - L8 SPAN 10	—	—	—	—	—	—	SEE DETAIL ON X7112
L1 - U1	0	0	0	0	0	—	4L-3" x 3" x 1/2" 2R-12" x 1/2" - 1R-10" x 1/2"
L2 - U2	-26.0	-40.3	-12.1	-7.4	-86.4	—	10" .33" B. OR C.
L3 - U3	0	0	0	0	0	—	10" .33" B. OR C.
L4 - U4	-26.0	-40.3	-12.1	-7.4	-86.4	—	10" .33" B. OR C.

END PANEL DIMENSIONS
 FOR TRUSS LOCATION SEE "LAYOUT OF FLOOR BEAMS, GIRDERS, AND TRUSSES" ON X7109.

TRUSS NUMBER	DIMENSION "A"	DIMENSION "B"	DIMENSION "C"
T 1	12' - 1 1/2"	99' - 3 3/8"	2' - 7"
T 2	12' - 6"	100' - 0"	2' - 7 1/2"
T 3	12' - 10 1/2"	100' - 8 1/8"	2' - 7 1/8"
T 4	12' - 15 3/8"	99' - 3 7/8"	2' - 7"
T 5	12' - 8"	100' - 0"	2' - 7 1/2"
T 6	12' - 10 1/2"	100' - 8 1/8"	2' - 7 1/8"
T 7	12' - 15 3/8"	99' - 3 7/8"	2' - 7"
T 8	12' - 6"	100' - 0"	2' - 7 1/2"
T 9	12' - 10 1/2"	100' - 8 1/8"	2' - 7 1/8"
T 10	12' - 15 3/8"	99' - 3 7/8"	2' - 7"
T 11	12' - 6"	100' - 0"	2' - 7 1/2"
T 12	12' - 10 1/2"	100' - 8 1/8"	2' - 7 1/8"

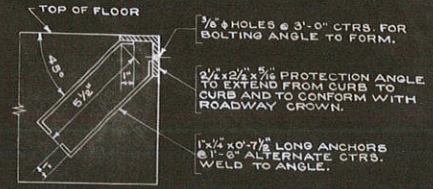
GENERAL NOTES

FOR CONCRETE PROPORTIONS, SEE "SPECIAL PROVISIONS".
 DRAWINGS SHALL NOT BE SCALED.
 BEVEL EXPOSED EDGES OF CONCRETE 1" UNLESS OTHERWISE SPECIFIED.
 STEEL BAR DIMENSIONS APPLY ALONG CENTER LINE OF BAR.
 ALL BRIDGE SEATS SHALL BE FINISHED WITH A METAL TROWEL AND BRUSHED.
 REINFORCEMENT IN FLOOR SHALL BE BENT AROUND DRAINS WHERE NECESSARY.
 ALL RIVETS SHALL BE 3/4" UNLESS OTHERWISE SPECIFIED.
 INDIVIDUAL TRUSSES SHALL BE ASSEMBLED IN THE SHOP WITH THE PROPER CAMBER, AND ALL MAIN CONNECTIONS SHALL BE SUBPUNCHED AND REAMED.
 FABRICATOR SHALL STRAIGHTEN MEMBERS WHERE THEY ENGAGE GUSSET PLATES, OR USE BEVELED SHIMS.
 ALL GIRDERS, TRUSSES AND RAILINGS SHALL BE BUILT TO VERTICAL LINES. (SEE NOTE ON X7110.)
 ENDS OF HORIZONTAL MEMBERS OF RAILINGS SHALL BE CUT IN A TRUE VERTICAL PLANE.
 LENGTH OF STEEL PILING SHALL BE 20'-0".
 STEEL PILING SHALL BE DRIVEN TO THE FULL LENGTH AS CALLED FOR, OR TO REFUSAL.
 LENGTH OF UNTREATED TIMBER PILING SHALL BE 30'-0".
 UNTREATED TIMBER PILING SHALL BE DRIVEN TO A MINIMUM BEARING VALUE OF 10 TONS PER PILE.
 FOOTINGS FOR PIER ONE AND SOUTH ABUTMENT SHALL BE KEYED AT LEAST 1'-0" INTO SOLID ROCK.
 SUBPUNCH ALL SIDEWALK BRACKET AND ALL SIDEWALK BRACE CONNECTIONS THROUGH THE STRUCTURE AND REAM IN THE FIELD.
 DRILL HOLES IN WEB PLATE IN FIELD FOR ALL FIELD CONNECTIONS OF ALL RAILING POSTS TO ALL SIDEWALK BRACKETS. ONE 9/16" HOLE PERMITTED FOR ERECTION PURPOSES.
 CONCRETE MASONRY IN SUPERSTRUCTURE OF SPANS 3, 4, & 5 SHALL BE POURED MONOLITHICALLY.
 RAILING QUANTITIES ARE INCLUDED IN "STRUCTURAL STEEL".
 THE SOUTH BANK OF THE RIVER SHALL BE RIPRAPPED, AS DIRECTED BY THE ENGINEER, FROM ELEVATION 643 TO ELEVATION 655, AND FROM A POINT 200 FEET WEST OF THE C. OF ROADWAY TO A POINT 200 FEET EAST OF THE C. OF ROADWAY. THE MINIMUM THICKNESS OF RIPRAP SHALL BE 1'-6".



PART PLAN AT ABUTMENT

SECTION 56-56



DETAIL OF PROTECTION ANGLE

7 OF 20

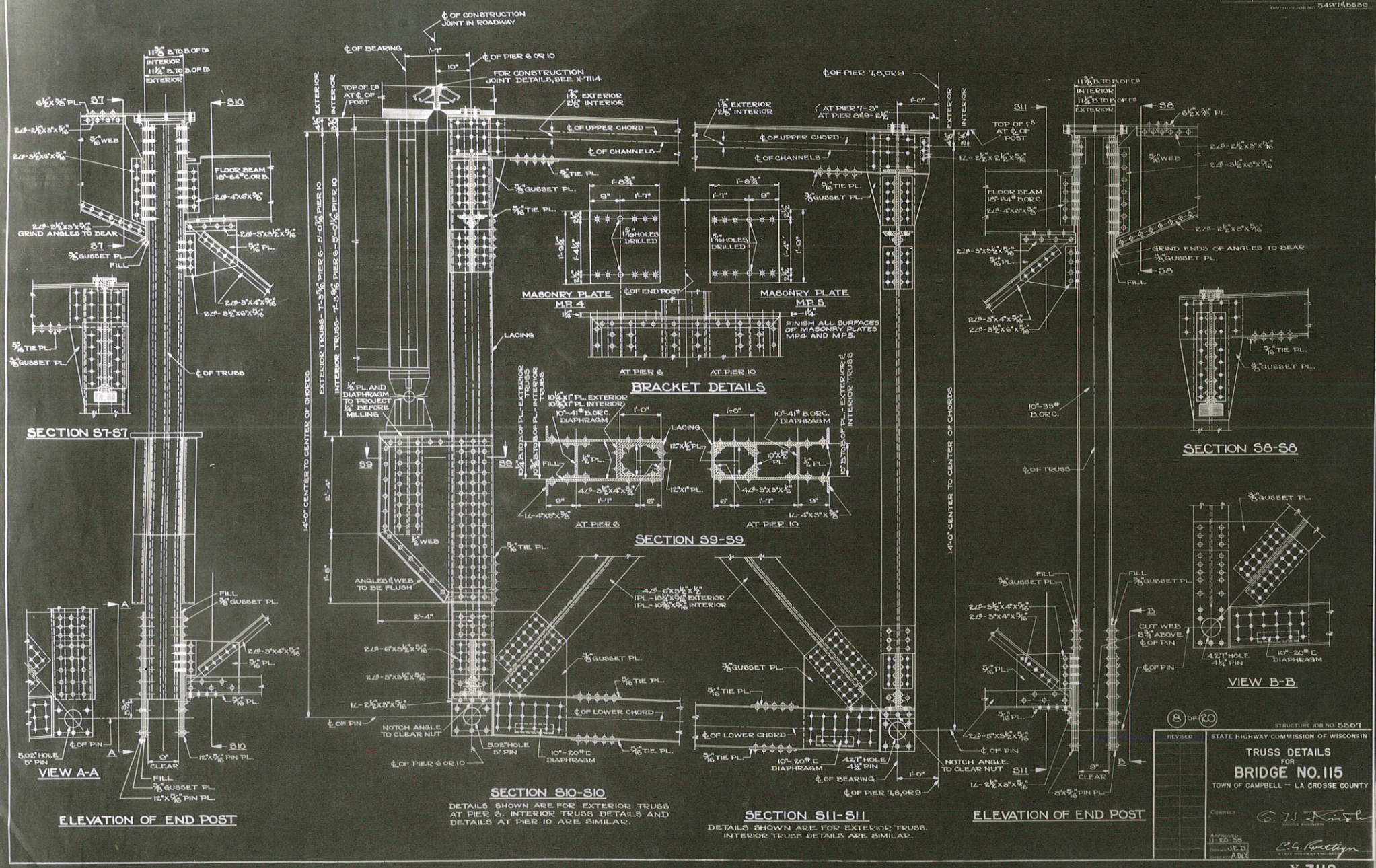
STRUCTURE JOB NO. 5307

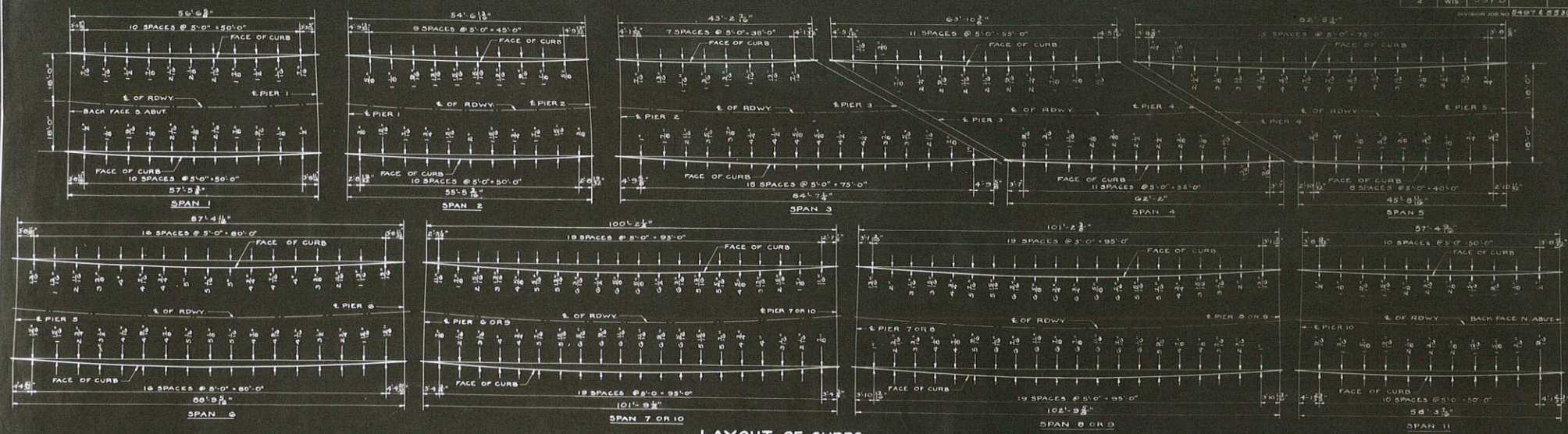
STATE HIGHWAY COMMISSION OF WISCONSIN

TRUSS MAKEUP FOR BRIDGE NO. 115 TOWN OF CAMPBELL - LA CROSSE COUNTY

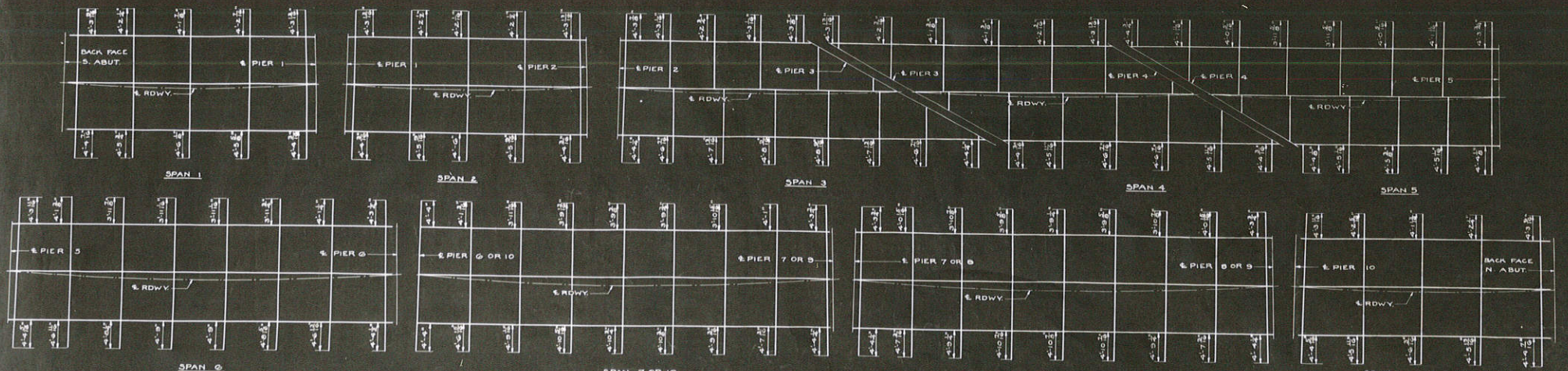
CORRECT: *G. H. ...*

APPROVED: *E. B. ...*





LAYOUT OF CURBS.



LAYOUT OF CURB BRACKETS

LENGTH OF CURB BRACKETS DIMENSIONED ABOVE CORRESPONDS TO DIMENSION "D" OF SHEET X7107 AND X7108

SPAN 7 OR 10
 LAYOUT SHOWN FOR SPAN 7
 SPAN 10 IS OPPOSITE HAND

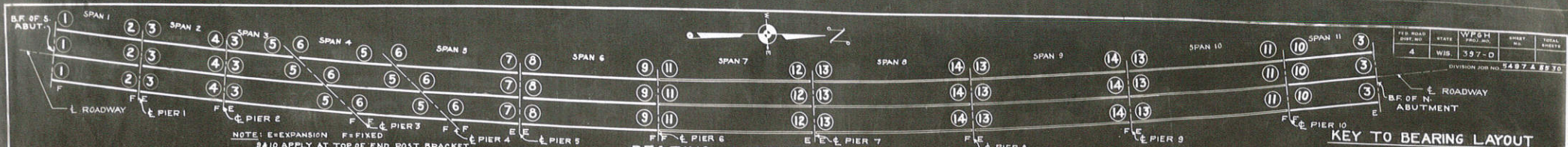
STRUCTURE JOB NO. 5307

STATE HIGHWAY COMMISSION OF WISCONSIN
 CURB OFFSETS
 AND BRACKET DIMENSIONS
 FOR
BRIDGE NO. 115
 TOWN OF CAMPBELL - LA CROSSE COUNTY

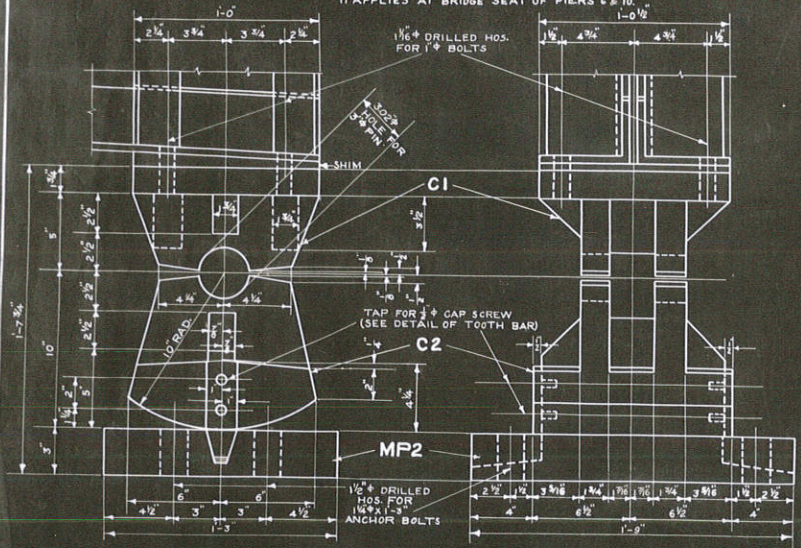
CONTRACT: *G. H. Fisher*
 BRIDGE ENGINEER

APPROVED: *G. H. Fisher*
 DISTRICT ENGINEER
 STATE HIGHWAY DEPARTMENT

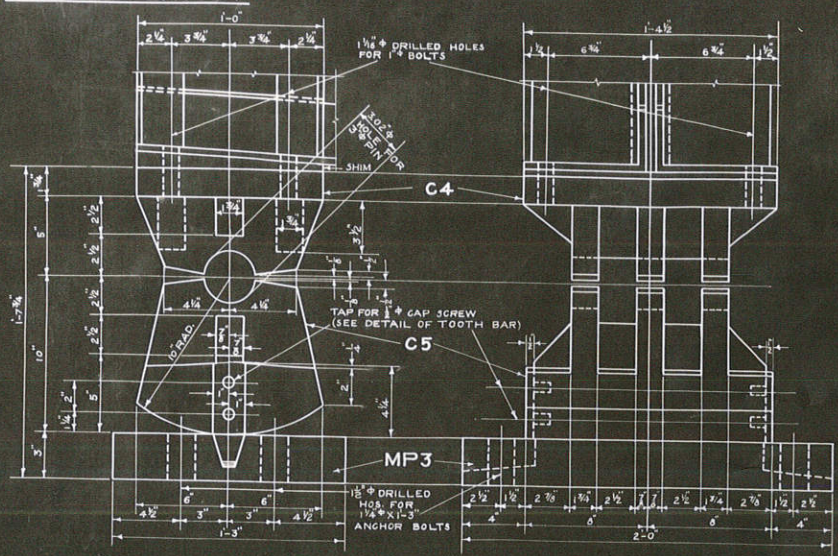
REVISIONS:



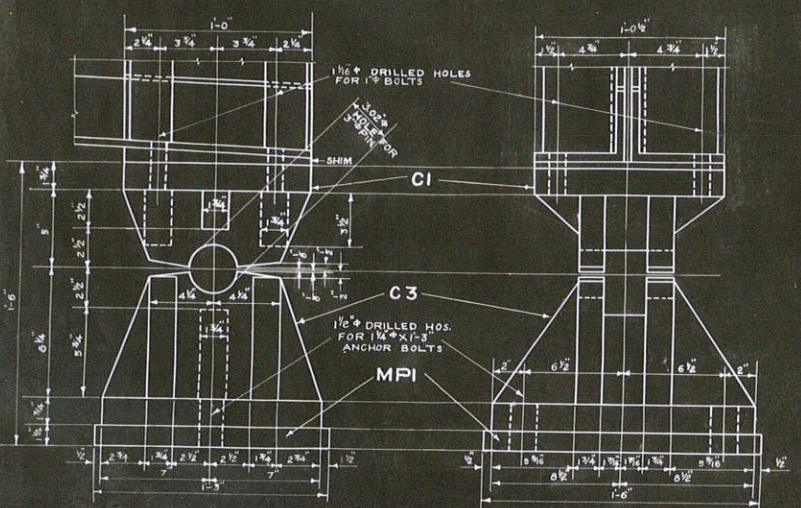
BEARING LAYOUT



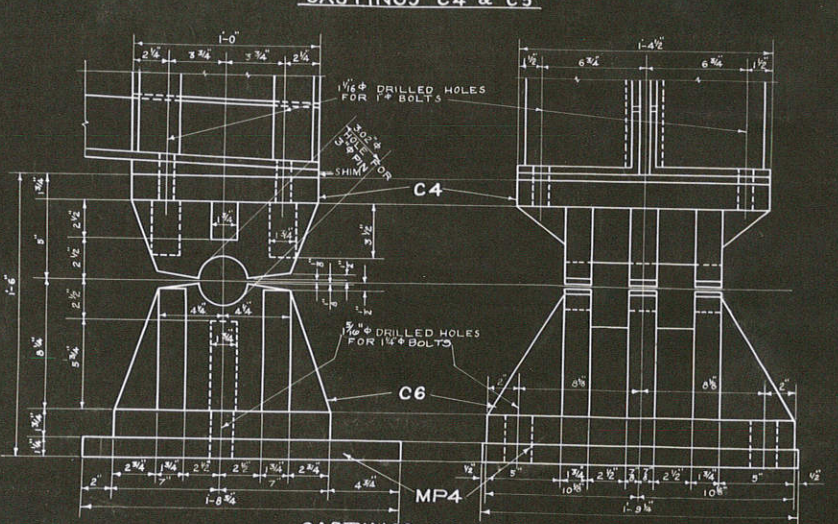
CASTINGS C1 & C2



CASTINGS C4 & C5



CASTINGS C1 & C3



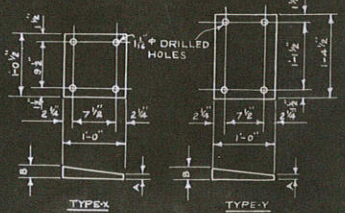
CASTINGS C4 & C6

KEY TO BEARING LAYOUT

LOCATION	CASTING NO.		MASONRY PLATE NO.	SHIM NO.	PIN NO.
	UPPER	LOWER			
1	C1	C3	MP1	S1	P1
2	C1	C3	MP1	S2	P1
3	C1	C2	MP2	S3	P1
4	C1	C3	MP1	S4	P1
5	C1	C3	MP1	S5	P1
6	C1	C3	MP1	S3	P1
7	C1	C2	MP2	S5	P1
8	C4	C5	MP3	S6	P2
9	C4	C5	MP3	S6	P2
10	C1	C7	MP5	S3	P1
11		C8	MP6		
12		C10	MP7		
13		C10	MP8		
14		C9	MP9		

SHIM DIMENSIONS

SHIM NO.	TYPE	DIMENSION		NO. REQUIRED
		A	B	
S1	X	1/2"	3/8"	3
S2	X	2 1/16"	2 9/16"	3
S3	X	1/2"	1 3/16"	16
S4	X	2 1/4"	3"	3
S5	X	1 5/16"	1 1/4"	9
S6	Y	1/2"	1 5/16"	6



SHIM DETAILS

NOTE: FOR DETAILS OF MASONRY PLATES MP1, MP2 & MP3 SEE X-7116 AND FOR MASONRY PLATES MP4 & MP5 SEE X-7112.

11 OF 20

STRUCTURE JOB NO. 5307
 STATE HIGHWAY COMMISSION OF WISCONSIN
BEARING DETAILS FOR BRIDGE NO. 115
 TOWN OF CAMPBELL - LA CROSSE COUNTY

REVISIONS: []
 CORRECTED BY: [Signature]
 APPROVED BY: [Signature]
 DATE: 11-20-32
 DRAWN BY: [Signature]
 CHECKED BY: [Signature]

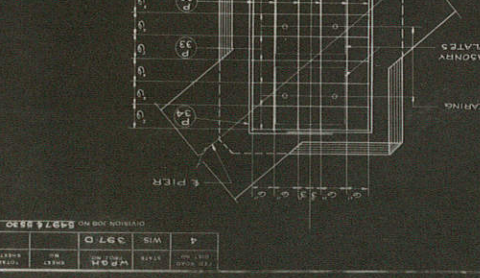
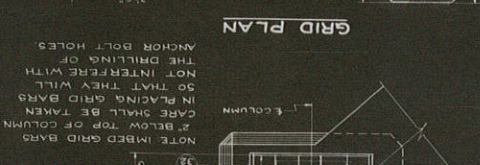
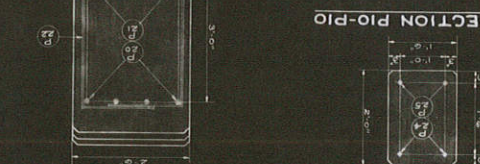
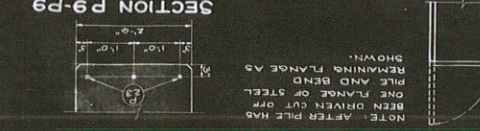
STATE HIGHWAY COMMISSION OF WISCONSIN
 STRUCTURE JOB NO. 8597
 DETAILS OF PIERS 3 AND 4
 FOR
 BRIDGE NO. 115
 TOWN OF CAMPBELL-- LA CROIXE COUNTY

Contract: *W. J. ...*
 Drawn by: *W. J. ...*
 Checked by: *W. J. ...*
 Date: 11-22-33

ESTIMATED QUANTITIES

BID ITEMS	UNIT	PIER 3	PIER 4	TOTAL
EXCAVATION FOR STRUCTURE	C.Y.	1.95	2.05	4.00
CONCRETE MASONRY	C.Y.	13.2	14.5	27.7
BAR STEEL REINFORCEMENT	L.B.	1,900	1,900	3,800
STEEL PILING DELIVERED	L.B.	1,474.0	1,474.0	2,948.0
STEEL PILING DRIVEN	L.F.	24.0	24.0	48.0
WATERPROOFING	S.F.	22.5	37.5	60.0

17 OF 20



NO.	DATE	BY	REVISION
4	3-7-34	W.S.	REVISED

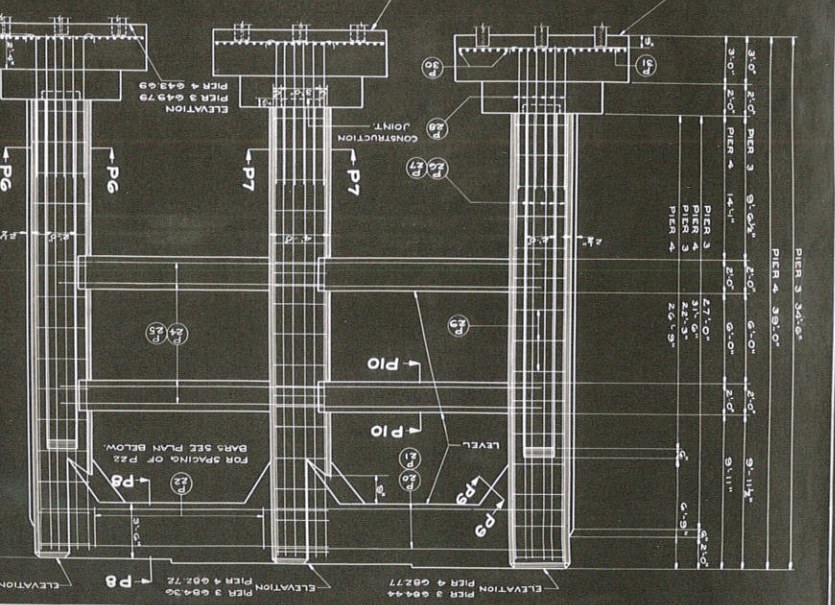
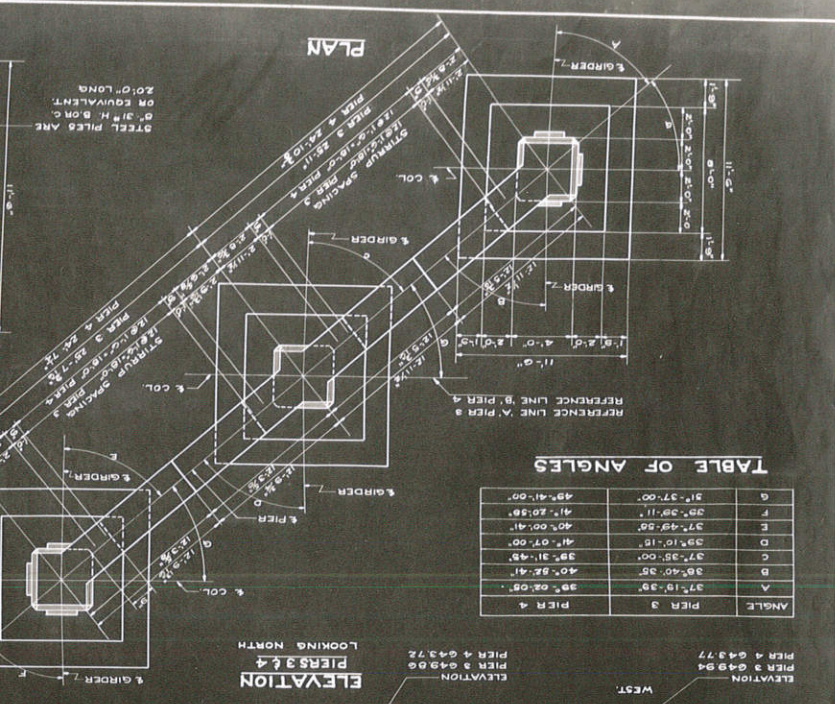
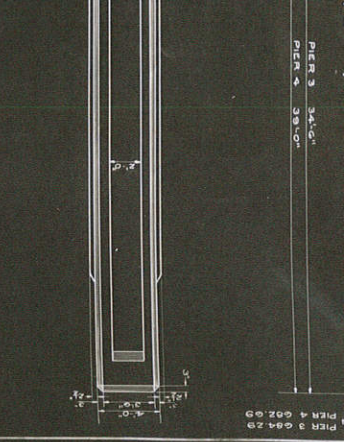
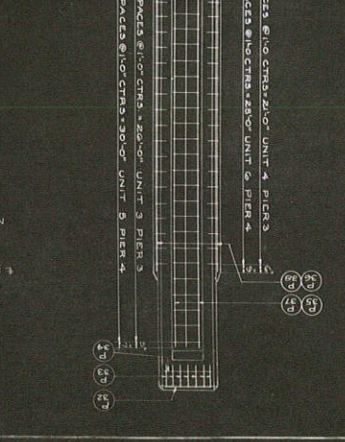
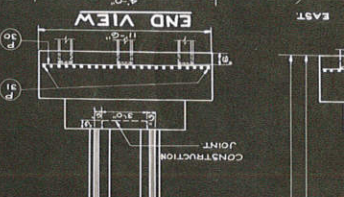
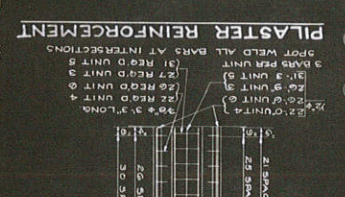
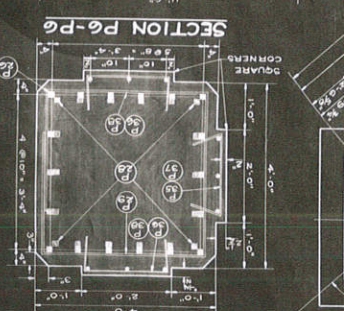
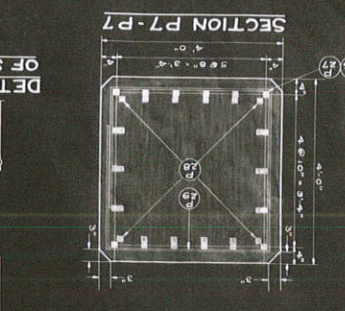
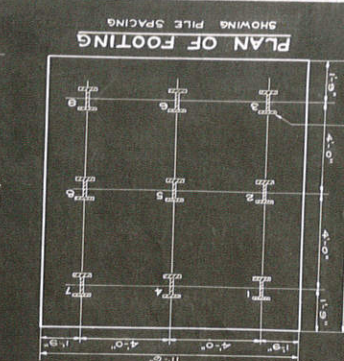
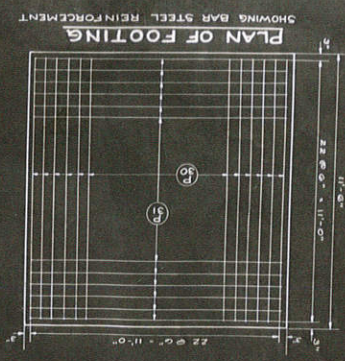


TABLE OF ANGLES

ANGLE	PIER 3	PIER 4
A	37° 18' .35"	38° 02' .08"
B	38° 40' .35"	40° 32' .41"
C	37° 38' .00"	39° 31' .43"
D	39° 10' .18"	41° 07' .00"
E	37° 45' .50"	40° 00' .41"
F	39° 30' .11"	41° 20' .38"
G	31° 37' .00"	43° 41' .00"

PIER 3 34'-0" x 34'-0"

LEVEL	PIER 3	PIER 4
LEVEL	47'-0"	47'-0"
LEVEL	42'-3"	42'-3"
LEVEL	31'-11"	31'-11"
LEVEL	9'-11"	9'-11"

STATE HIGHWAY COMMISSION OF WISCONSIN
 STRUCTURE JOB NO. 5307
 DETAILS OF PIERS 6, 7, 8, & 9
 FOR
 BRIDGE NO. 115
 TOWN OF CAMPBELL - LA CROSSE COUNTY
 DRAWN BY
 CHECKED BY
 DATE

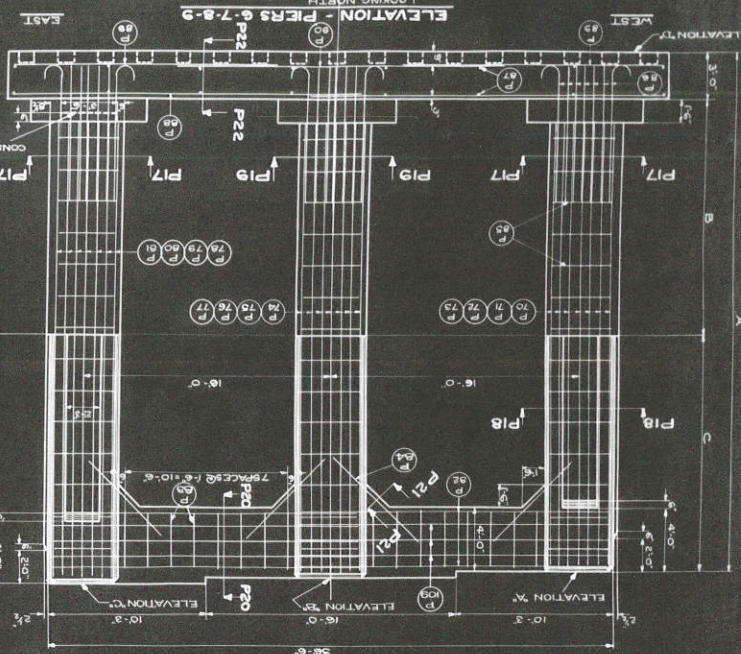
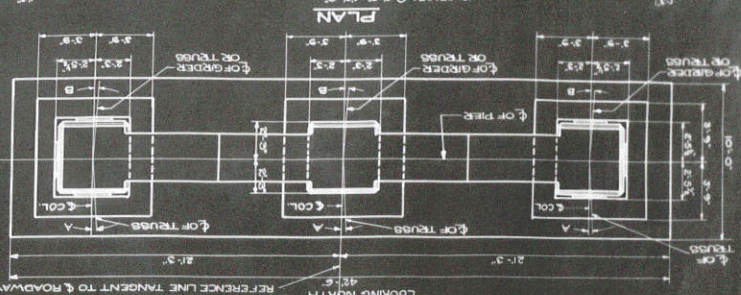
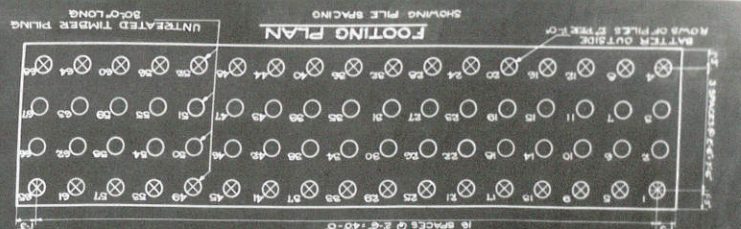
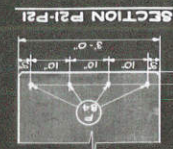
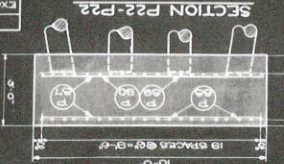
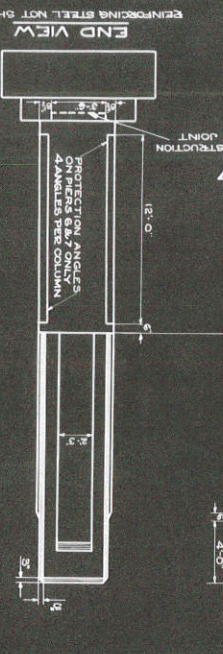


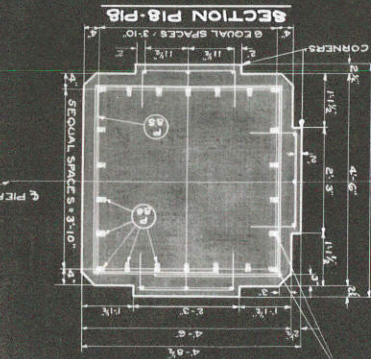
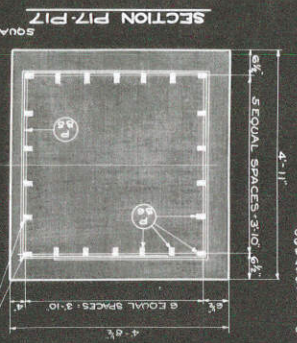
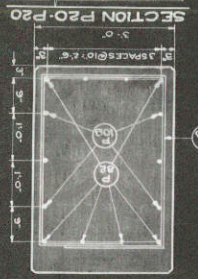
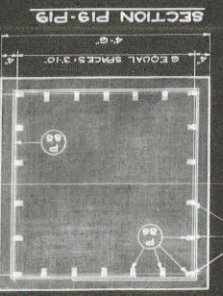
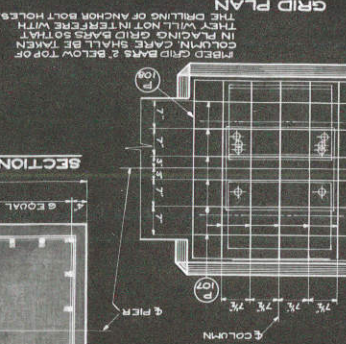
TABLE OF DIMENSIONS, ELEVATIONS & ANGLES

PIER NO.	A	B	C	D
6	33'-0"	15'-0"	15'-0"	67'-04"
7	30'-0"	15'-3"	12'-3"	66'-15"
8	27'-0"	5'-0"	15'-0"	66'-07"
9	25'-0"	5'-0"	17'-0"	66'-11"



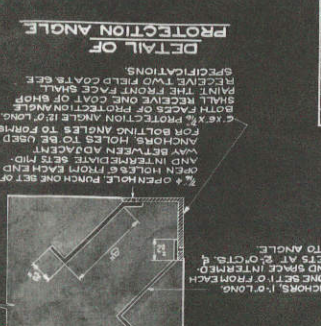
ESTIMATED QUANTITIES

ITEM	UNIT	PIER 6	PIER 7	PIER 8	PIER 9	TOTAL
EXCAVATION FOR STRUCTURES	CY	31.0	31.0	30.0	36.0	128.0
CONCRETE REINFORCEMENT	CY	127.9	125.1	118.0	511.6	882.6
BAR STEEL REINFORCEMENT	LB.	15,545	14,990	14,205	59,550	104,290
STRUCTURAL STEEL	LB.	2,660	2,660	2,040	2,040	9,400
UNTREATED TIMBER PILING, DET.	LF.	2,040	2,040	2,040	2,040	8,160
UNTREATED TIMBER PILING, DRIVEN	LF.	2,040	2,040	2,040	2,040	8,160
WATERPROOFING	SF.	625	625	600	750	2,600



PLASTER REINFORCEMENT

NO.	DESCRIPTION	UNIT	QUANTITY
1	1/2" DIA. @ 12" ON CENTER	W/COL. PIERS	11.3
2	1/2" DIA. @ 12" ON CENTER	W/COL. PIERS	11.3
3	1/2" DIA. @ 12" ON CENTER	W/COL. PIERS	11.3
4	1/2" DIA. @ 12" ON CENTER	W/COL. PIERS	11.3
5	1/2" DIA. @ 12" ON CENTER	W/COL. PIERS	11.3
6	1/2" DIA. @ 12" ON CENTER	W/COL. PIERS	11.3
7	1/2" DIA. @ 12" ON CENTER	W/COL. PIERS	11.3
8	1/2" DIA. @ 12" ON CENTER	W/COL. PIERS	11.3
9	1/2" DIA. @ 12" ON CENTER	W/COL. PIERS	11.3
10	1/2" DIA. @ 12" ON CENTER	W/COL. PIERS	11.3
11	1/2" DIA. @ 12" ON CENTER	W/COL. PIERS	11.3
12	1/2" DIA. @ 12" ON CENTER	W/COL. PIERS	11.3
13	1/2" DIA. @ 12" ON CENTER	W/COL. PIERS	11.3
14	1/2" DIA. @ 12" ON CENTER	W/COL. PIERS	11.3
15	1/2" DIA. @ 12" ON CENTER	W/COL. PIERS	11.3
16	1/2" DIA. @ 12" ON CENTER	W/COL. PIERS	11.3
17	1/2" DIA. @ 12" ON CENTER	W/COL. PIERS	11.3
18	1/2" DIA. @ 12" ON CENTER	W/COL. PIERS	11.3
19	1/2" DIA. @ 12" ON CENTER	W/COL. PIERS	11.3
20	1/2" DIA. @ 12" ON CENTER	W/COL. PIERS	11.3
21	1/2" DIA. @ 12" ON CENTER	W/COL. PIERS	11.3
22	1/2" DIA. @ 12" ON CENTER	W/COL. PIERS	11.3
23	1/2" DIA. @ 12" ON CENTER	W/COL. PIERS	11.3
24	1/2" DIA. @ 12" ON CENTER	W/COL. PIERS	11.3
25	1/2" DIA. @ 12" ON CENTER	W/COL. PIERS	11.3
26	1/2" DIA. @ 12" ON CENTER	W/COL. PIERS	11.3
27	1/2" DIA. @ 12" ON CENTER	W/COL. PIERS	11.3
28	1/2" DIA. @ 12" ON CENTER	W/COL. PIERS	11.3
29	1/2" DIA. @ 12" ON CENTER	W/COL. PIERS	11.3
30	1/2" DIA. @ 12" ON CENTER	W/COL. PIERS	11.3
31	1/2" DIA. @ 12" ON CENTER	W/COL. PIERS	11.3
32	1/2" DIA. @ 12" ON CENTER	W/COL. PIERS	11.3
33	1/2" DIA. @ 12" ON CENTER	W/COL. PIERS	11.3
34	1/2" DIA. @ 12" ON CENTER	W/COL. PIERS	11.3
35	1/2" DIA. @ 12" ON CENTER	W/COL. PIERS	11.3
36	1/2" DIA. @ 12" ON CENTER	W/COL. PIERS	11.3
37	1/2" DIA. @ 12" ON CENTER	W/COL. PIERS	11.3
38	1/2" DIA. @ 12" ON CENTER	W/COL. PIERS	11.3
39	1/2" DIA. @ 12" ON CENTER	W/COL. PIERS	11.3
40	1/2" DIA. @ 12" ON CENTER	W/COL. PIERS	11.3
41	1/2" DIA. @ 12" ON CENTER	W/COL. PIERS	11.3
42	1/2" DIA. @ 12" ON CENTER	W/COL. PIERS	11.3
43	1/2" DIA. @ 12" ON CENTER	W/COL. PIERS	11.3
44	1/2" DIA. @ 12" ON CENTER	W/COL. PIERS	11.3
45	1/2" DIA. @ 12" ON CENTER	W/COL. PIERS	11.3
46	1/2" DIA. @ 12" ON CENTER	W/COL. PIERS	11.3
47	1/2" DIA. @ 12" ON CENTER	W/COL. PIERS	11.3
48	1/2" DIA. @ 12" ON CENTER	W/COL. PIERS	11.3
49	1/2" DIA. @ 12" ON CENTER	W/COL. PIERS	11.3
50	1/2" DIA. @ 12" ON CENTER	W/COL. PIERS	11.3
51	1/2" DIA. @ 12" ON CENTER	W/COL. PIERS	11.3
52	1/2" DIA. @ 12" ON CENTER	W/COL. PIERS	11.3
53	1/2" DIA. @ 12" ON CENTER	W/COL. PIERS	11.3
54	1/2" DIA. @ 12" ON CENTER	W/COL. PIERS	11.3
55	1/2" DIA. @ 12" ON CENTER	W/COL. PIERS	11.3
56	1/2" DIA. @ 12" ON CENTER	W/COL. PIERS	11.3
57	1/2" DIA. @ 12" ON CENTER	W/COL. PIERS	11.3
58	1/2" DIA. @ 12" ON CENTER	W/COL. PIERS	11.3
59	1/2" DIA. @ 12" ON CENTER	W/COL. PIERS	11.3
60	1/2" DIA. @ 12" ON CENTER	W/COL. PIERS	11.3
61	1/2" DIA. @ 12" ON CENTER	W/COL. PIERS	11.3
62	1/2" DIA. @ 12" ON CENTER	W/COL. PIERS	11.3
63	1/2" DIA. @ 12" ON CENTER	W/COL. PIERS	11.3
64	1/2" DIA. @ 12" ON CENTER	W/COL. PIERS	11.3
65	1/2" DIA. @ 12" ON CENTER	W/COL. PIERS	11.3
66	1/2" DIA. @ 12" ON CENTER	W/COL. PIERS	11.3
67	1/2" DIA. @ 12" ON CENTER	W/COL. PIERS	11.3
68	1/2" DIA. @ 12" ON CENTER	W/COL. PIERS	11.3
69	1/2" DIA. @ 12" ON CENTER	W/COL. PIERS	11.3
70	1/2" DIA. @ 12" ON CENTER	W/COL. PIERS	11.3
71	1/2" DIA. @ 12" ON CENTER	W/COL. PIERS	11.3
72	1/2" DIA. @ 12" ON CENTER	W/COL. PIERS	11.3
73	1/2" DIA. @ 12" ON CENTER	W/COL. PIERS	11.3
74	1/2" DIA. @ 12" ON CENTER	W/COL. PIERS	11.3
75	1/2" DIA. @ 12" ON CENTER	W/COL. PIERS	11.3
76	1/2" DIA. @ 12" ON CENTER	W/COL. PIERS	11.3
77	1/2" DIA. @ 12" ON CENTER	W/COL. PIERS	11.3
78	1/2" DIA. @ 12" ON CENTER	W/COL. PIERS	11.3
79	1/2" DIA. @ 12" ON CENTER	W/COL. PIERS	11.3
80	1/2" DIA. @ 12" ON CENTER	W/COL. PIERS	11.3
81	1/2" DIA. @ 12" ON CENTER	W/COL. PIERS	11.3



DIVISION JOB NO. 5307
 SHEET NO. 11
 DATE

SUPERSTRUCTURE 164.00'

R.R.	NO.	MARK	SIZE	LENGTH	SPACING	LOCATION	SPAN	TYPE
	226	B1	1/2"	25'-6"	6'-0"	LONGITUDINAL IN FLOOR & CURB	1&11	
	481	B2	1/2"	19'-9"	"	"	2	
	483	B3	1/2"	23'-6"	"	"	3,4,5	
	188	B4	1/2"	23'-6"	"	"	6	
	189	B5	1/2"	21'-0"	6'-0"	TRANSVERSE IN FLOOR	ALL	MM
	2678	B6	1/2"	20'-6"	6'-0"	"	ALL	
	1708	B7	1/2"	5'-0"	6'-0"	"	ALL	EE
	1840	B8	1/2"	22'-6"	6'-0"	LONGITUDINAL IN FLOOR & CURB	7&8,10	

SOUTH ABUTMENT 7.150'

NO.	MARK	SIZE	LENGTH	SPACING	LOCATION	TYPE
12	A1	3/8"	19'-9"	6'-0"	HORIZONTAL IN BOTTOM OF GIRDER	
8	A2	1/2"	18'-6"	6'-0"	SHOWN HOR. IN FRONT & BACK FACE OF GIRDER	
10	A3	1/2"	9'-0"	6'-0"	6' CTRES. IN HAUNCHES	
4	A4	1/2"	12'-0"	6'-0"	6' CTRES. HORIZONTAL IN BOTTOM OF WINGS	
4	A5	1/2"	11'-0"	6'-0"	6' CTRES. HORIZONTAL IN FRONT FACE OF WINGS	
4	A6	1/2"	9'-0"	6'-0"	6' CTRES. VERTICAL	
4	A7	1/2"	8'-0"	6'-0"	6' CTRES. VERTICAL	
6	A8	1/2"	3'-6"	6'-0"	6' CTRES. VERTICAL	
6	A9	1/2"	2'-0"	6'-0"	6' CTRES. VERTICAL	
16	A10	1/2"	19'-9"	6'-0"	6' CTRES. HORIZONTAL IN TOP OF GIRDER	
6	A11	1/2"	18'-6"	6'-0"	6' CTRES. SHOWN HOR. IN BACK FACE OF PARAPET	
2	A12	1/2"	10'-0"	6'-0"	6' CTRES. SHOWN HOR. IN UPPER WINGS	
4	A13	1/2"	11'-0"	6'-0"	6' CTRES. SHOWN HOR. IN LOWER WINGS	
4	A14	1/2"	9'-0"	6'-0"	6' CTRES. SHOWN HOR. IN WINGS	
6	A15	1/2"	10'-9"	6'-0"	6' CTRES. SHOWN HOR. IN WINGS & PARAPET	
6	A16	1/2"	8'-9"	6'-0"	6' CTRES. SHOWN HOR. IN WINGS & PARAPET	
40	A17	1/2"	6'-9"	6'-0"	6' CTRES. SHOWN HOR. IN WINGS & PARAPET	
6	A18	1/2"	14'-9"	6'-0"	6' CTRES. SHOWN HOR. IN WINGS & PARAPET	
4	A19	1/2"	16'-3"	6'-0"	6' CTRES. SHOWN HOR. IN WINGS & PARAPET	
18	A20	1/2"	18'-6"	6'-0"	6' CTRES. SHOWN HOR. IN FRONT FACE OF PARAPET	
8	A21	1/2"	7'-0"	6'-0"	6' CTRES. SHOWN GRID BARS	AA
18	A22	1/2"	8'-0"	6'-0"	6' CTRES. SHOWN GRID BARS	AA
24	A23	1/2"	22'-6"	6'-0"	6' CTRES. SHOWN GRID BARS	AA
24	A24	1/2"	22'-6"	6'-0"	6' CTRES. SHOWN GRID BARS	AA
24	A25	1/2"	22'-6"	6'-0"	6' CTRES. SHOWN GRID BARS	AA
10	A26	1/2"	3'-6"	6'-0"	6' CTRES. SHOWN DOWELS FOR A24 BARS	GG
10	A27	1/2"	3'-6"	6'-0"	6' CTRES. SHOWN DOWELS FOR A24 BARS	GG
18	A28	1/2"	6'-0"	6'-0"	6' CTRES. SHOWN HOOPS IN RAILING POST	GG
10	A29	1/2"	6'-0"	6'-0"	6' CTRES. SHOWN HOOPS IN RAILING POST	GG
96	A30	1/2"	4'-0"	6'-0"	6' CTRES. TRANSVERSE IN FOOTINGS	
96	A31	1/2"	18'-6"	6'-0"	6' CTRES. LONGITUDINAL IN FOOTINGS	
78	A32	1/2"	4'-0"	6'-0"	6' CTRES. SHOWN DOWELS IN FOOTINGS	
3	A33	1/2"	14'-3"	6'-0"	6' CTRES. SHOWN HOOPS IN COLUMNS	FF
3	A34	1/2"	19'-3"	6'-0"	6' CTRES. SHOWN HOOPS IN COLUMNS	FF
3	A35	1/2"	19'-6"	6'-0"	6' CTRES. SHOWN HOOPS IN COLUMNS	FF
3	A36	1/2"	24'-0"	6'-0"	6' CTRES. SHOWN HOOPS IN COLUMNS	FF
3	A37	1/2"	24'-0"	6'-0"	6' CTRES. SHOWN HOOPS IN COLUMNS	FF
3	A38	1/2"	24'-0"	6'-0"	6' CTRES. SHOWN HOOPS IN COLUMNS	FF
3	A39	1/2"	24'-0"	6'-0"	6' CTRES. SHOWN HOOPS IN COLUMNS	FF
3	A40	1/2"	24'-0"	6'-0"	6' CTRES. SHOWN HOOPS IN COLUMNS	FF
3	A41	1/2"	24'-0"	6'-0"	6' CTRES. SHOWN HOOPS IN COLUMNS	FF
3	A42	1/2"	24'-0"	6'-0"	6' CTRES. SHOWN HOOPS IN COLUMNS	FF
3	A43	1/2"	24'-0"	6'-0"	6' CTRES. SHOWN HOOPS IN COLUMNS	FF
3	A44	1/2"	24'-0"	6'-0"	6' CTRES. SHOWN HOOPS IN COLUMNS	FF
3	A45	1/2"	24'-0"	6'-0"	6' CTRES. SHOWN HOOPS IN COLUMNS	FF
3	A46	1/2"	24'-0"	6'-0"	6' CTRES. SHOWN HOOPS IN COLUMNS	FF
3	A47	1/2"	24'-0"	6'-0"	6' CTRES. SHOWN HOOPS IN COLUMNS	FF
3	A48	1/2"	24'-0"	6'-0"	6' CTRES. SHOWN HOOPS IN COLUMNS	FF
3	A49	1/2"	24'-0"	6'-0"	6' CTRES. SHOWN HOOPS IN COLUMNS	FF
3	A50	1/2"	24'-0"	6'-0"	6' CTRES. SHOWN HOOPS IN COLUMNS	FF
3	A51	1/2"	24'-0"	6'-0"	6' CTRES. SHOWN HOOPS IN COLUMNS	FF
3	A52	1/2"	24'-0"	6'-0"	6' CTRES. SHOWN HOOPS IN COLUMNS	FF
3	A53	1/2"	24'-0"	6'-0"	6' CTRES. SHOWN HOOPS IN COLUMNS	FF
3	A54	1/2"	24'-0"	6'-0"	6' CTRES. SHOWN HOOPS IN COLUMNS	FF
3	A55	1/2"	24'-0"	6'-0"	6' CTRES. SHOWN HOOPS IN COLUMNS	FF
3	A56	1/2"	24'-0"	6'-0"	6' CTRES. SHOWN HOOPS IN COLUMNS	FF

NORTH ABUTMENT 6.400'

NO.	MARK	SIZE	LENGTH	SPACING	LOCATION	TYPE
12	A51	3/8"	19'-9"	6'-0"	6' CTRES. HORIZONTAL IN BOTTOM OF GIRDER	
6	A52	1/2"	18'-6"	6'-0"	6' CTRES. SHOWN HOR. IN FRONT & BACK FACE OF GIRDER	
20	A53	1/2"	9'-0"	6'-0"	6' CTRES. IN HAUNCHES	
10	A54	1/2"	12'-0"	6'-0"	6' CTRES. HORIZONTAL IN BOTTOM OF WINGS	
4	A55	1/2"	11'-0"	6'-0"	6' CTRES. HORIZONTAL IN FRONT FACE OF WINGS	
4	A56	1/2"	9'-0"	6'-0"	6' CTRES. VERTICAL	
4	A57	1/2"	8'-0"	6'-0"	6' CTRES. VERTICAL	
6	A58	1/2"	3'-6"	6'-0"	6' CTRES. VERTICAL	
6	A59	1/2"	2'-0"	6'-0"	6' CTRES. VERTICAL	
18	A70	1/2"	19'-9"	6'-0"	6' CTRES. HORIZONTAL IN TOP OF GIRDER	
6	A71	1/2"	18'-6"	6'-0"	6' CTRES. SHOWN HOR. IN BACK FACE OF PARAPET	
2	A72	1/2"	10'-0"	6'-0"	6' CTRES. SHOWN HOR. IN UPPER WINGS	
4	A73	1/2"	11'-0"	6'-0"	6' CTRES. SHOWN HOR. IN LOWER WINGS	
4	A74	1/2"	9'-0"	6'-0"	6' CTRES. SHOWN HOR. IN WINGS	
6	A75	1/2"	10'-9"	6'-0"	6' CTRES. SHOWN HOR. IN WINGS & PARAPET	
6	A76	1/2"	8'-9"	6'-0"	6' CTRES. SHOWN HOR. IN WINGS & PARAPET	
40	A77	1/2"	6'-9"	6'-0"	6' CTRES. SHOWN HOR. IN WINGS & PARAPET	
6	A78	1/2"	14'-9"	6'-0"	6' CTRES. SHOWN HOR. IN WINGS & PARAPET	
4	A79	1/2"	16'-3"	6'-0"	6' CTRES. SHOWN HOR. IN WINGS & PARAPET	
18	A80	1/2"	18'-6"	6'-0"	6' CTRES. SHOWN HOR. IN FRONT FACE OF PARAPET	
8	A81	1/2"	7'-0"	6'-0"	6' CTRES. SHOWN GRID BARS	AA
24	A82	1/2"	8'-0"	6'-0"	6' CTRES. SHOWN GRID BARS	AA
24	A83	1/2"	22'-6"	6'-0"	6' CTRES. SHOWN GRID BARS	AA
24	A84	1/2"	22'-6"	6'-0"	6' CTRES. SHOWN GRID BARS	AA
24	A85	1/2"	22'-6"	6'-0"	6' CTRES. SHOWN GRID BARS	AA
10	A86	1/2"	3'-6"	6'-0"	6' CTRES. SHOWN DOWELS FOR A84 BARS	GG
10	A87	1/2"	3'-6"	6'-0"	6' CTRES. SHOWN DOWELS FOR A84 BARS	GG
18	A88	1/2"	6'-0"	6'-0"	6' CTRES. SHOWN HOOPS IN RAILING POST	GG
10	A89	1/2"	6'-0"	6'-0"	6' CTRES. SHOWN HOOPS IN RAILING POST	GG
48	A90	1/2"	4'-0"	6'-0"	6' CTRES. TRANSVERSE IN FOOTINGS	
48	A91	1/2"	18'-6"	6'-0"	6' CTRES. LONGITUDINAL IN FOOTINGS	
36	A92	1/2"	4'-0"	6'-0"	6' CTRES. SHOWN DOWELS IN FOOTINGS	
3	A93	1/2"	14'-3"	6'-0"	6' CTRES. SHOWN HOOPS IN COLUMNS	FF
3	A94	1/2"	19'-3"	6'-0"	6' CTRES. SHOWN HOOPS IN COLUMNS	FF
3	A95	1/2"	19'-6"	6'-0"	6' CTRES. SHOWN HOOPS IN COLUMNS	FF
3	A96	1/2"	24'-0"	6'-0"	6' CTRES. SHOWN HOOPS IN COLUMNS	FF
3	A97	1/2"	24'-0"	6'-0"	6' CTRES. SHOWN HOOPS IN COLUMNS	FF
3	A98	1/2"	24'-0"	6'-0"	6' CTRES. SHOWN HOOPS IN COLUMNS	FF
3	A99	1/2"	24'-0"	6'-0"	6' CTRES. SHOWN HOOPS IN COLUMNS	FF
3	A100	1/2"	24'-0"	6'-0"	6' CTRES. SHOWN HOOPS IN COLUMNS	FF
3	A101	1/2"	24'-0"	6'-0"	6' CTRES. SHOWN HOOPS IN COLUMNS	FF
3	A102	1/2"	24'-0"	6'-0"	6' CTRES. SHOWN HOOPS IN COLUMNS	FF
3	A103	1/2"	24'-0"	6'-0"	6' CTRES. SHOWN HOOPS IN COLUMNS	FF
3	A104	1/2"	24'-0"	6'-0"	6' CTRES. SHOWN HOOPS IN COLUMNS	FF

PIER I 11.450'

NO.	MARK	SIZE	LENGTH	SPACING	LOCATION	TYPE
24	P1	1/2"	36'-3"	6'-0"	6' CTRES. SHOWN VERTICAL IN COLUMNS	
16	P2	1/2"	19'-9"	6'-0"	6' CTRES. SHOWN HORIZONTAL IN GIRDER	
16	P3	1/2"	18'-6"	6'-0"	6' CTRES. SHOWN HOR. IN FRONT & BACK FACE OF GIRDER	FF
12	P4	1/2"	9'-0"	6'-0"	6' CTRES. SHOWN STIRRUPS IN GIRDER	
16	P5	1/2"	6'-0"	6'-0"	6' CTRES. SHOWN IN FILLETS	
24	P6	1/2"	19'-9"	6'-0"	6' CTRES. SHOWN HORIZONTAL IN TRANSVERSE STRUTS	
24	P7	1/2"	18'-6"	6'-0"	6' CTRES. SHOWN HOOPS IN COLUMNS	FF
96	P8	1/2"	7'-6"	6'-0"	6' CTRES. SHOWN DOWELS IN FOOTINGS	GG
4	P9	1/2"	UNIT NO. 1	6'-0"	SEE DETAIL ON SHEET X719	
2	P10	1/2"	UNIT NO. 2	6'-0"	SEE DETAIL ON SHEET X719	
3	P11	1/2"	15'-3"	6'-0"	6' CTRES. SHOWN HOOPS FOR GRIDS	FF
30	P12	1/2"	6'-6"	6'-0"	6' CTRES. SHOWN GRID BARS	LL

PIERS 3&4 24.000'

NO.	MARK	SIZE	LENGTH	SPACING	LOCATION	PIER	TYPE
16	P20	1/2"	29'-9"	6'-0"	6' CTRES. HORIZONTAL IN GIRDER	3	
16	P21	1/2"	28'-3"	6'-0"	6' CTRES. HORIZONTAL IN GIRDER	4	
60	P22	1/2"	12'-0"	6'-0"	6' CTRES. SHOWN STIRRUPS IN GIRDER	3&4	FF
24	P23	1/2"	6'-0"	6'-0"	6' CTRES. IN FILLETS	3&4	
16	P24	1/2"	28'-3"	6'-0"	6' CTRES. IN CROSS TIES	3	
16	P25	1/2"	27'-3"	6'-0"	6' CTRES. IN CROSS TIES	4	
54	P26	1/2"	29'-3"	6'-0"	6' CTRES. VERTICAL IN COLUMNS	3	
54	P27	1/2"	35'-9"	6'-0"	6' CTRES. VERTICAL IN COLUMNS	4	
108	P28	1/2"	10'-6"	6'-0"	6' CTRES. DOWELS FOR P26 & P27 BARS	3&4	GG
96	P29	1/2"	15'-0"	6'-0"	6' CTRES. HOOPS IN COLUMNS	3&4	FF
128	P30	1/2"	11'-0"	6'-0"	6' CTRES. LONGITUDINAL IN FOOTINGS	3&4	
128	P31	1/2"	11'-0"	6'-0"	6' CTRES. TRANSVERSE IN FOOTINGS	3&4	
36	P32	1/2"	6'-6"	6'-0"	6' CTRES. LONGITUDINAL IN GRID	3&4	LL
42	P33	1/2"	6'-6"	6'-0"	6' CTRES. TRANSVERSE IN GRID	3&4	LL
6	P34	1/2"	15'-0"	6'-0"	6' CTRES. SHOWN HOOPS FOR GRID	3&4	FF
2	P35	1/2"	UNIT NO. 3	6'-0"	SEE DETAIL ON SHEET X7121	3	
2	P36	1/2"	UNIT NO. 4	6'-0"	SEE DETAIL ON SHEET X7121	4	
4	P37	1/2"	UNIT NO. 5	6'-0"	SEE DETAIL ON SHEET X7121	4	
4	P38	1/2"	UNIT NO. 6	6'-0"	SEE DETAIL ON SHEET X7121	4	

PIERS 2&5 26.000'

NO.	MARK	SIZE	LENGTH	SPACING	LOCATION	PIER	TYPE
16	P40	1/2"	27'-3"	6'-0"	6' CTRES. SHOWN VERTICAL IN WEST COLUMN	2	
16	P41	1/2"	27'-3"	6'-0"	6' CTRES. SHOWN VERTICAL IN WEST COLUMN	2	
16	P42	1/2"	28'-3"	6'-0"	6' CTRES. SHOWN VERTICAL IN WEST COLUMN	2	
16	P43	1/2"	28'-3"	6'-0"	6' CTRES. SHOWN VERTICAL IN WEST COLUMN	2	
16	P44	1/2"	28'-3"	6'-0"	6' CTRES. SHOWN VERTICAL IN WEST COLUMN	2	
16	P45	1/2"	28'-3"	6'-0"	6' CTRES. SHOWN VERTICAL IN WEST COLUMN	2	
32	P46	1/2"	19'-9"	6'-0"	6' CTRES. HORIZONTAL IN GIRDER	2&5	
32	P47	1/2"	11'-3"	6'-0"	6' CTRES. STIRRUPS IN GIRDER	2&5	FF
24	P48	1/2"	6'-0"	6'-0"	6' CTRES. IN FILLETS	2&5	
24	P49	1/2"	19'-3"	6'-0"	6' CTRES. IN CROSS TIES	2&5	
24	P50	1/2"	15'-0"	6'-0"	6' CTRES. HOOPS IN COLUMNS	2&5	FF
108	P51	1/2"	6'-6"	6'-0"	6' CTRES. DOWELS IN FOOTINGS	2&5	GG
64	P5						

INDEX OF SHEETS

SHEET NO	1	TITLE
SHEET NO	2	TYPICAL CROSS SECTIONS
SHEET NO	3	ESTIMATE OF QUANTITIES
SHEET NO		RIGHT OF WAY PLAT
SHEET NO		PLAN AND PROFILE STA. TO STA.
SHEET NO		DRAINAGE STRUCTURES AND STANDARD DETAILS
SHEET NO		CROSS SECTIONS
SHEET NO		GRADE SHEET

FED. ROAD DIST. NO.	STATE	U.S. W.P. PROJ. NO.	SHEET NO.	TOTAL SHEETS
4	WISC.	397-D	1	5530

DIVISION JOB NO. 5530

STATE OF WISCONSIN
WISCONSIN HIGHWAY COMMISSION

PLAN AND PROFILE OF PROPOSED
SPARTA - LA CROSSE ROAD
LA CROSSE - WEST SALEM ROAD
LA CROSSE COUNTY

U.S. WORKS PROGRAM GRADE CROSSING PROJECT NO WPGH 397-D

BEGINNING AT A POINT NEAR THE CENTER OF THE SW 1/4 OF SEC. 15, T16N, R7W, THENCE NORTHEASTERLY A DISTANCE OF 854.56 FEET.

SCALES PLAN 1 IN. = 100 FT.
 PROFILE HOR. 1 IN. = 100 FT. VERT. 1 IN. = 10 FT.
 CROSS SECTIONS HOR. 1 IN. = 5 FT. VERT. 1 IN. = 5 FT.



CONVENTIONAL SIGNS

STATE AND NATIONAL LINE	CULVERTS
COUNTY LINE	DROP INLET
CITY, VILLAGE, OR TOWN	TROLLEY POLE
TOWNSHIP LINE	POWER POLE
SECTION LINE	TELEPHONE OR TELEGRAPH POLES
FENCE LINE	MAIL BOX
GUARD RAIL	REFERENCE STAKES
UNFENCED PROPERTY	MARSH
RIGHT OF WAY LINE	HEDGE
TRAVELED WAY	TREES
RAILROADS	GROUND ELEVATION
RETAINING WALL	GRADE ELEVATION
LEVEE	
BASE OR SURVEY LINE	

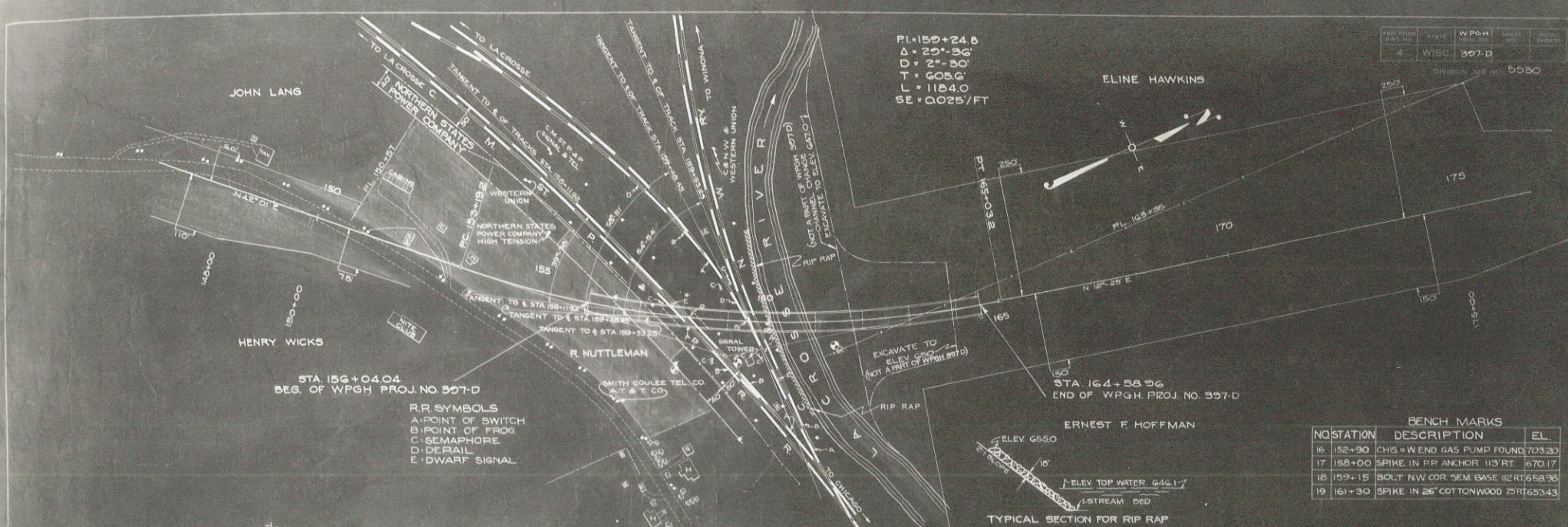
LAYOUT
 SCALE 0 1 2 MI.

TOTAL NET LENGTH OF CENTERLINE 0.161 MI.

WISCONSIN HIGHWAY COMMISSION MADISON, WIS.	U.S. DEPARTMENT OF AGRICULTURE BUREAU OF PUBLIC ROADS
Surveyor H. J. L. Note Book 7961 Div. Computer M. G. Gieseler Div. Checker Contact	RECOMMENDED FOR APPROVAL: _____ DISTRICT ENGINEER _____ CHIEF ENGINEER
CORRECT: T. M. Reynolds DIVISION ENGINEER	APPROVED: _____ DIRECTOR
RECOMMENDED FOR APPROVAL: Frank Beese DESIGN ENGINEER M. W. White CONSTRUCTION ENGINEER	DATE: 1/8/36
APPROVED: S. G. Kellie STATE HIGHWAY ENGINEER	DATE: _____

DATE	11/11/53
BY	J. W. W.
CHECKED	J. W. W.
SCALE	1" = 100'
PROJECT	WPGH PROJ. NO. 397-D
SHEET NO.	12241

SCALE	1" = 100'
PROJECT	WPGH PROJ. NO. 397-D
SHEET NO.	12241



FED. ROAD DIST. NO.	STATE	WPGH PROJ. NO.	SHEET NO.	TOTAL SHEETS
4	WISC.	397-D		5580

BENCH MARKS		
NOTATION	DESCRIPTION	EL.
16	152+90 CHIS. W END GAS PUMP FOUND	703.30
17	186+00 SPIKE IN RR ANCHOR 113 RT.	670.17
18	159+15 BOLT N.W. COR. SEM. BASE 112 RT.	658.98
19	161+30 SPIKE IN 26" COTTONWOOD 75 RT.	653.43

