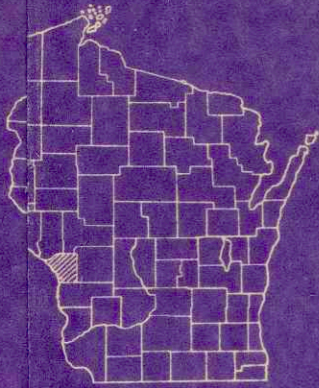


INDEX OF SHEETS

- SHEET 1 TITLE
- SHEET 2 TYPICAL CROSS SECTIONS
- SHEET 3 ESTIMATE OF QUANTITIES
- SHEET 5A-3B MISCELLANEOUS QUANTITIES
- SHEET — RIGHT OF WAY PLAT
- SHEET 1-11 PLAN AND PROFILE STA. 0+32 TO STA. 30+07.7
- SHEET 2-22 STANDARD DETAILS
- SHEET — DRAINAGE STRUCTURES
- SHEET 23-31 CROSS SECTIONS

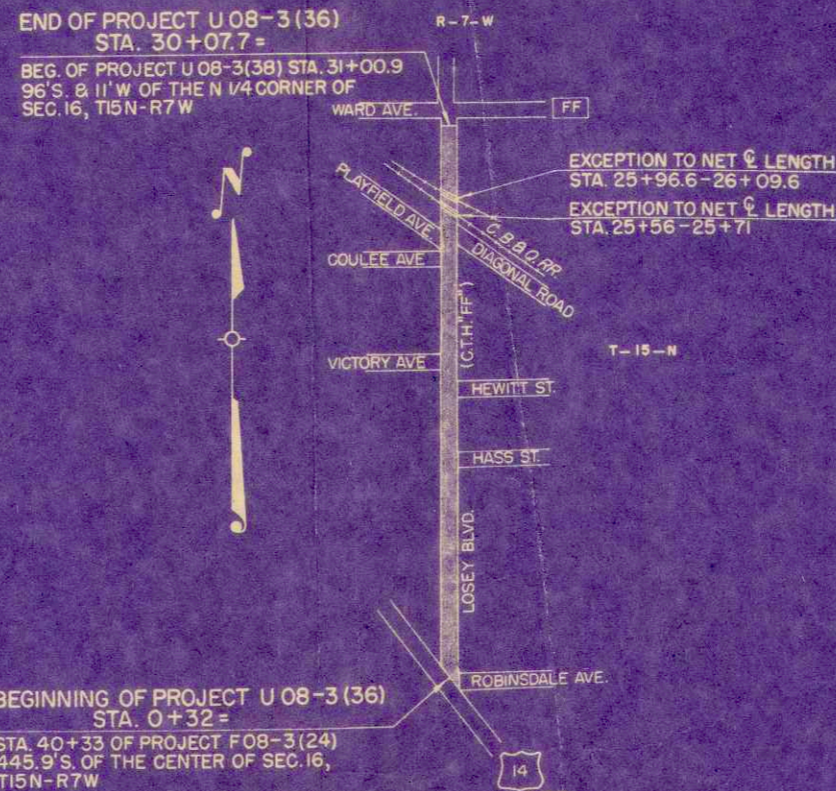


STATE OF WISCONSIN  
STATE HIGHWAY COMMISSION OF WISCONSIN

COUNTY AND HIGHWAY	ROUTE AND SECTION	CLASS AND AGREEMENT		S. P. R. REGION DIVISION
		STATE	FEDERAL	
32.6	8.3		11.36	4 WIS.

PLAN AND PROFILE OF PROPOSED  
LOSEY BOULEVARD, TOWN OF SHELBY  
C. T. H. "FF"  
LA CROSSE COUNTY  
PROJECT U 08-3(36)

SCALES PLAN 1 IN. = 100 FT.  
PROFILE HOR. 1 IN. = 20 FT. VERT. 1 IN. = 2 FT.  
CROSS SECTIONS HOR. 1 IN. = 5 FT. VERT. 1 IN. = 2 FT.



BEGINNING OF PROJECT U 08-3(36)  
STA. 0+32 =  
STA. 40+33 OF PROJECT F 08-3(24)  
445.9'S. OF THE CENTER OF SEC. 16,  
T15N-R7W

LAYOUT

SCALE 0 100 500 1000 FT.

TOTAL NET LENGTH OF CENTERLINE = 0.558 MI.

CONVENTIONAL SIGNS

STATE LINE	-----	CULVERTS IN PLACE	-----
COUNTY LINE	-----	CULVERTS REQUIRED	-----
TOWNSHIP RANGE LINE	-----	DROP INLET	-----
SECTION LINE	-----	POWER POLE	-----
NEW RIGHT OF WAY LINE	-----	TELEPHONE OR TELEGRAPH POLE	-----
PRESENT RIGHT OF WAY LINE	-----	RIGHT OF WAY MARKERS	-----
WIRE FENCE	-----	REFERENCE STAKE FOR HUBS ONLY	-----
WOVEN	-----	MARSH	-----
BARBED	-----	HEDGE	-----
LOT LINE	-----	TREES	-----
CORPORATE OR CITY LIMITS	-----		
PROPERTY LINE	-----		
TRAVELWAY OR P.E.	-----		
RAILROADS	-----		
BASE OR SURVEY LINE	-----		

APPROVED FOR LA CROSSE COUNTY HIGHWAY COMMISSION

DATE \_\_\_\_\_ COUNTY HIGHWAY COMMISSIONER

STATE HIGHWAY COMMISSION OF WISCONSIN  
MADISON, WIS.

SURVEYOR: W.H.T.      HOTEL BOOK: 90  
DIVISION COMPUTER: D.O.B.      M.O. CHECKER:  
DISTRICT CHECKER: R.C.J.      CORRECT

CORRECT

DATE: 5-16-57      J. S. Peltz      DISTRICT ENGINEER

RECOMMENDED FOR APPROVAL:

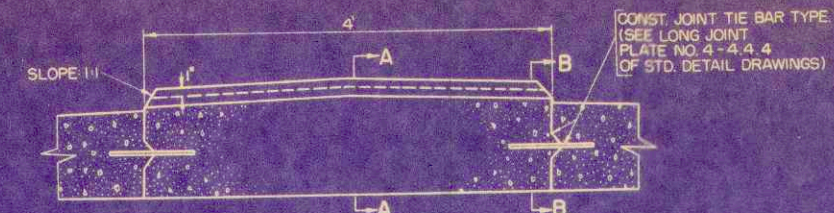
DATE: 5-29-57      J. S. Peltz      STATE HIGHWAY ENGINEER

DEPARTMENT OF COMMERCE  
BUREAU OF PUBLIC ROADS

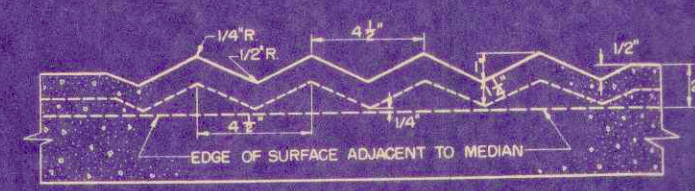
APPROVED: \_\_\_\_\_

DIVISION ENGINEER

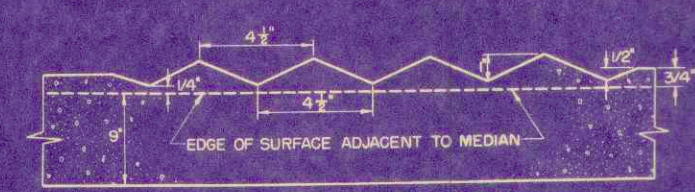
**CORRUGATED MEDIAN**



TRANSVERSE SECTION



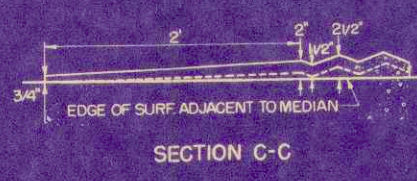
LONGITUDINAL SECTION A-A



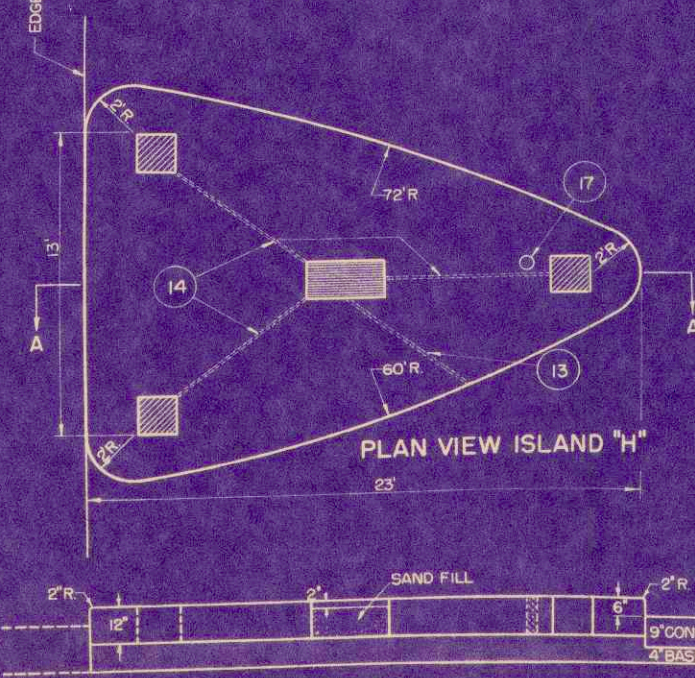
LONGITUDINAL SECTION B-B



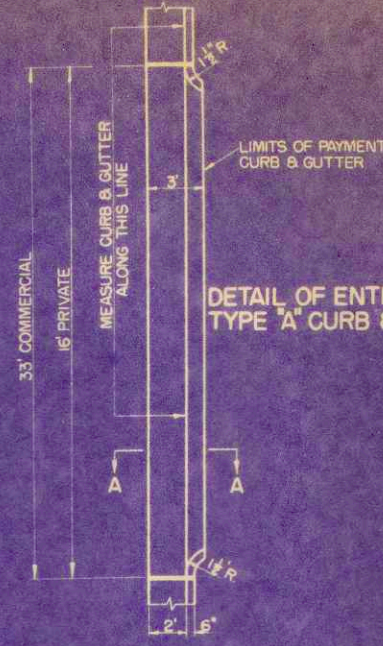
PROFILE ALONG TOP OF PROPOSED MEDIAN



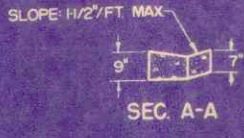
PLAN VIEW ISLAND "H"



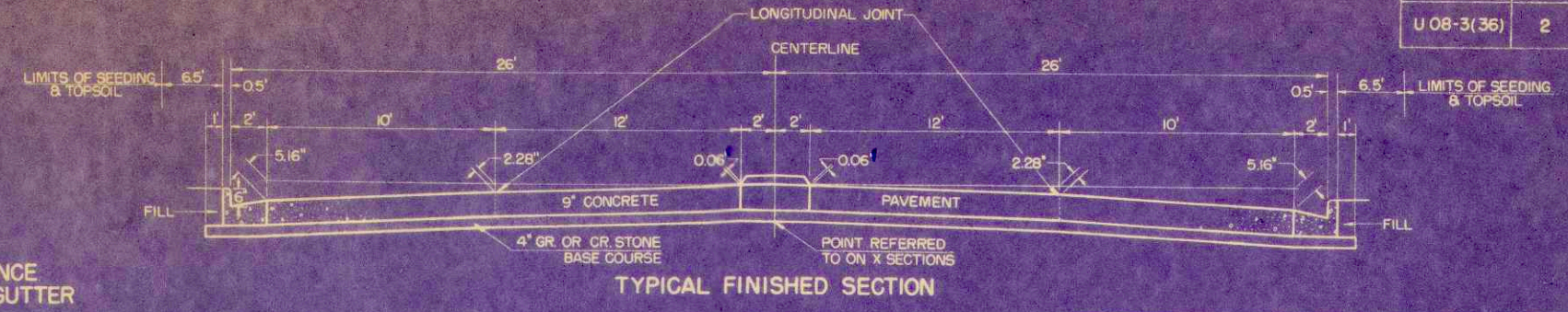
SECTION A-A



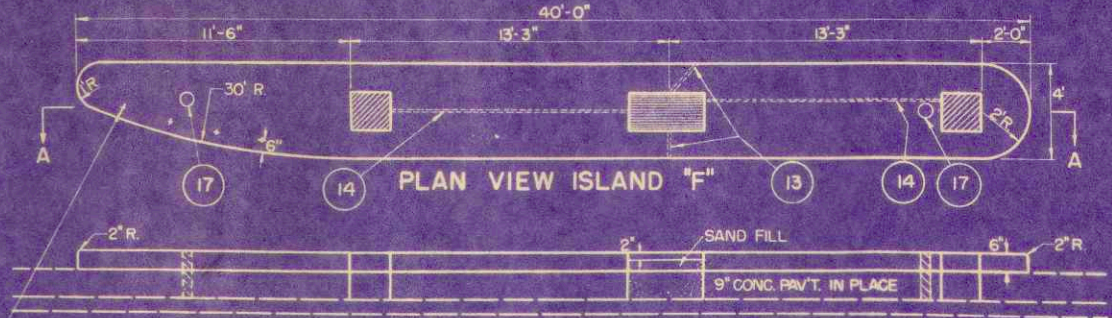
DETAIL OF ENTRANCE TYPE "A" CURB & GUTTER



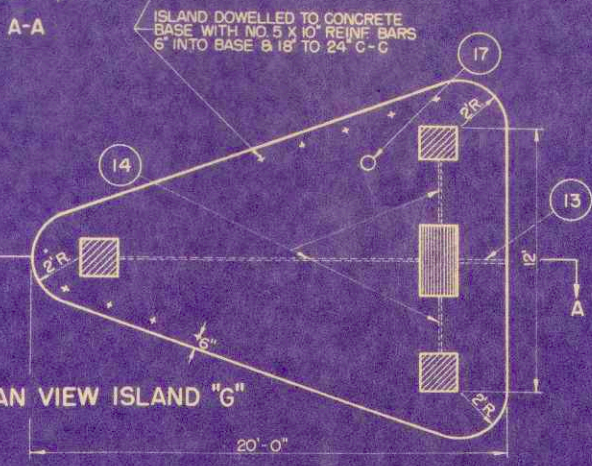
SLOPE 1/2"/FT. MAX



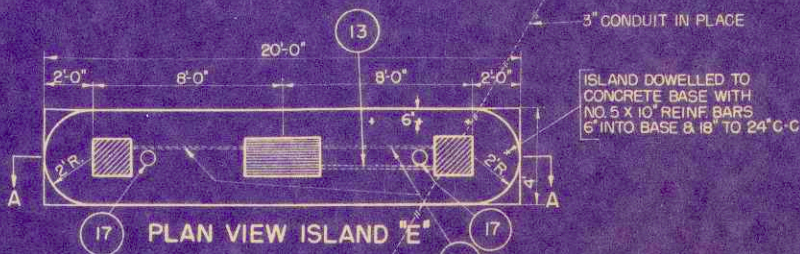
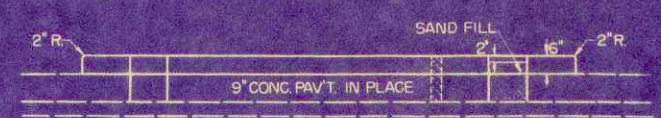
TYPICAL FINISHED SECTION



SECTION A-A



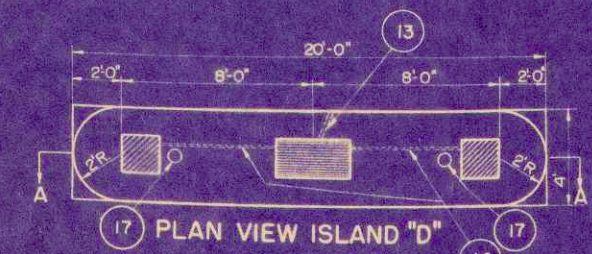
SECTION A-A



PLAN VIEW ISLAND "E"



SECTION A-A



PLAN VIEW ISLAND "D"



SECTION A-A

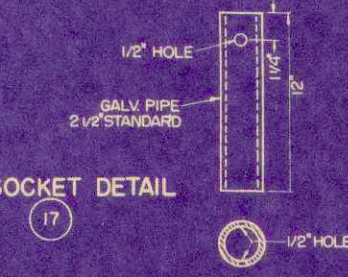
**LEGEND**

- 20' x 20" OPENING
- 20' x 36" OPENING

NOTE: OPENINGS ARE TO BE FILLED WITH CONCRETE AFTER LIGHTS ARE INSTALLED.

GENERAL NOTE: DETAILS OF CONSTRUCTION NOT SHOWN ON THIS DRAWING SHALL CONFORM TO THE PERTINENT REQUIREMENTS OF THE STANDARD SPECIFICATIONS, SEC. 2522 & THE APPLICABLE DETAILS & PROVISIONS ON APPLICABLE DETAIL DRAWING - PLATE 8-4.1.3

**PIPE SOCKET DETAIL**



**ESTIMATE OF QUANTITIES**

TO BE FURNISHED BY OTHERS TO CONTRACTOR, & TO BE PLACED BY CONTRACTOR

ITEM NO.	QUANTITY					NAME OF ITEM
	ISLAND	TYPE	TYPE	TYPE	TYPE	
1	8	2	2	3	3	ISLAND LIGHT HEAD - A.S.T.M. DESIGNATION A-48.36 CLASS 35
2	8	2	2	3	3	ISLAND LIGHT BASE
3	8	2	2	3	3	ISLAND LIGHT SUB-BASE
4	24	6	6	7	7	5 3/8" DIA. X 3 1/2" FOCUS - AMBER OPTICAL LENS SLIGHTLY SANDBLASTED ON INSIDE SURFACE
5	8	2	2	5	5	LENS BLANKS
6	8	2	2	3	3	60 WATT (110-115-120 VOLTS) A-21 CLEAR BULB MED. BASE T.S. LAMPS
7	8	2	2	3	3	B.E.S. MULTIPLE SOCKET ASSEMBLY INCLUDING FUSE & FUSE SOCKET
8	4	1	1	1	1	2" DIA. X 4'-6" PIPE SIGN STANDARD WITH CAP ORNAMENT
9	-	-	-	1	-	2" DIA. X 8' PIPE SIGN STANDARD WITH CAP ORNAMENT
10	4	1	1	1	1	YELLOW REFLECTOR BUTTON SQ. DIAMOND MOUNTED REFLECTOR SIGN
11	32	8	8	12	12	LENS RINGS WITH BRASS SCREWS
12	228	70	80	70	95	12 CONDUCTOR ISLAND LIGHT CABLE

**ESTIMATE OF QUANTITIES**

TO BE FURNISHED AND PLACED BY THE CONTRACTOR

13	144	7	60	50	75	3" GALV. STEEL PIPE CONDUIT FROM ISLAND TO CURB OR POWER POLE
14	44	11	21	21	21	1 1/4" GALV. STEEL PIPE CONDUIT
15	-	22	40	28	-	NO. 5 X 10' REINF. DOWEL BARS
16	308	77	149	198	264	CONCRETE MASONRY (GRADE A-A) MEASURED IN SQ. FT.
17	8	2	2	1	1	2 1/2" SIGN STANDARD (PIPE SOCKET)

**TYPICAL CROSS SECTION FOR 52' F-F ROADWAY P.C. CONCRETE PAVEMENT**

TYPE "D", "E", "F", "G", "H" TRAFFIC (SAFETY) ISLANDS

# ESTIMATE OF QUANTITIES

CONTRACT NO. 1

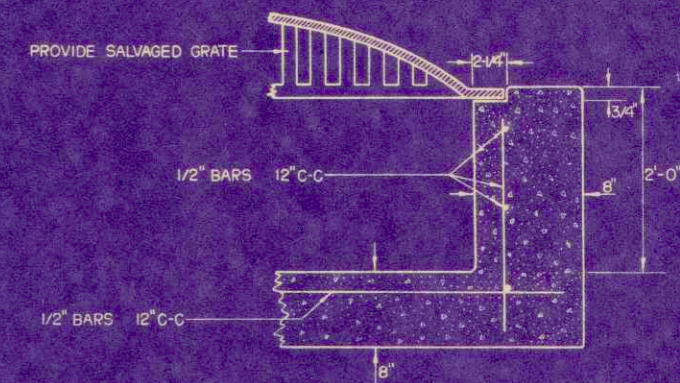
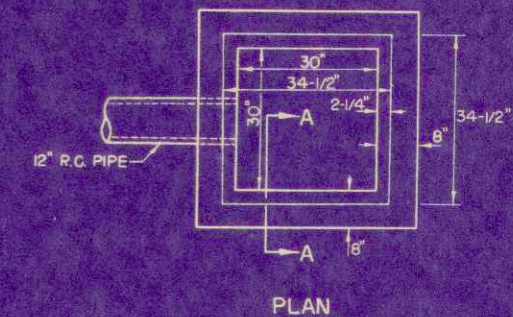
PROJECT	SHEET NUMBER	TOTAL SHEETS
U 08-3(36)	3	31

THIS PROJECT IS TO BE EXECUTED UNDER THE STANDARD SPECIFICATIONS FOR ROAD AND BRIDGE CONSTRUCTION OF THE STATE HIGHWAY COMMISSION OF WISCONSIN — EDITION OF 1957, APPROVED AUGUST 9, 1957; FEDERAL AID REQUIRED CONTRACT PROVISIONS APPROVED DECEMBER 4, 1957, AND SPECIAL PROVISIONS AS ATTACHED TO PROPOSALS.

STATION TO STATION	NET LENGTH OF CENTER LINE	CLEAR-GRUBBING		EXCAVATION				SAND GRAVEL FILL	FINISHING ROADWAY	OBLITERATING OLD ROAD	GRAVEL OR CRUSHED STONE BASE		R.C.C. PIPE STORM SEWER					CENTER OF STREET TRAFFIC (SAFETY) ISLANDS					REMOVE PAV'T.	REMOVE CURB AND GUTTER	ABANDON INLETS	CONC. PAV'T. 9"	CONC. PAV'T. REINF.	CATCH BASIN TYPE 1-A	CATCH BASIN TYPE 1-B	MAN-HOLES TYPE 3-J	INLET TYPE "Z"	CATCH BASIN COVERS TYPE "A"	MAN-HOLE COVERS TYPE "J"	ADJUST. MANHOLE COVERS	CONC. CURB & GUTTER 30" TYPE "A"	CORRUGATED MEDIAN	TOPSOIL		FER-TILIZER	SEEDING														
		ING	ING	UNCLASS.							12"	18"	24"	30"	CLASS III 36"	TYPE D	TYPE E	TYPE F	TYPE G	TYPE H																																		
		UNIT	LIN. FT.	IN. DIA.	IN. DIA.	C.Y.	C.Y.				C.Y.	C.Y.	LS.	STA.	C.Y.	C.Y.	LIN. FT.	LIN. FT.	LIN. FT.	LIN. FT.	LIN. FT.	EACH															EACH	EACH			EACH	EACH	SO. YD.	LIN. FT.	EACH	SO. YD.	SQ. YD.	EACH	EACH	EACH	EACH	EACH	EACH	EACH
0+32 - 30+07.7	2947.7	300	300	4910					1			2875	640	302			4	1	1	1	1	130	213	2	15100	15100	23	1																										
NO FEDERAL PARTICIPATION												600		718	553	2139	224																																					
<b>TOTAL</b>		300	300	4910					1			3475	640	1020	553	2139	224	4	1	1	1	1	130	213	2	15100	15100	23	1																									

### APPLICABLE DETAIL DRAWINGS

- 2-1.1.9 CONCRETE PAVEMENT REINFORCEMENT
- 2-2.1.9 BRIDGE APPROACH & RAILROAD GRADE CROSSING DETAIL
- 3-1.1.6 CONCRETE CURB, CONCRETE GUTTER, CONCRETE CURB & GUTTER AND CONCRETE SURFACE DRAINS
- 4-4.5.6 TRANSVERSE JOINTS CONCRETE PAVEMENT
- 4-4.4.4 LONGITUDINAL JOINTS CONCRETE PAVEMENT
- 5-3.3.1 CATCH BASINS
- 5-3.4.4 CATCH BASIN & INLET COVERS
- 5-3.7.1 MANHOLES
- 5-3.8.2 MANHOLE COVERS
- 7-4.1.2 CONSTRUCTION BARRICADE
- 8-4.1.3 TRAFFIC ISLAND, CENTER OF STREET TYPE



DETAILS OF TYPE "Z" INLET  
STA. 1+32 LT.

ESTIMATED QUANTITIES  
CONCRETE MASONRY = 0.70 C.Y.  
BAR STEEL = 80 LB.

DETAIL SUMMARY OF MISCELLANEOUS QUANTITIES

CLEARING & GRUBBING

Sta.	Side	Clearing I.D.	Grubbing I.D.
13+04	Rt.	12	12
14+99	Rt.	30	30
15+70	Rt.	44	44
17+11	Rt.	44	44
17+48	Rt.	14	14
17+83	Rt.	14	14
18+06	Rt.	6	6
18+17	Rt.	6	6
18+34	Rt.	12	12
22+42	Rt.	8	8
22+83	Rt.	12	12
23+04	Rt.	16	16
23+25	Rt.	14	14
23+46	Rt.	12	12
23+46	Rt.	56	56

REMOVING PAVEMENT

Sta. to Sta.	Side	S.V.
0+11 - 1+20	Rt.	130

REMOVING CURB & GUTTER

Sta. to Sta.	Side	L.F.
4+16 - 4+99	Rt.	83
0+70 - 1+20	Rt.	50
6+42 - 1+20	Lt.	80

CORRUGATED MEDIAN

Sta. to Sta.	L.F.
1+20 - 2+90	170
3+10 - 12+25	915
13+22 - 16+36	314
18+27 - 21+04	277
21+80 - 23+02	122
26+31 - 30+07.7	376

Undistributed

GRAVEL OR CRUSHED STONE BASE COURSE

Sta. to Sta.	Location	C.Y.
4+17 - 1+20	Rt.	74
6+40 - 1+20	Lt.	18
1+20 - 4+00	C.L.	266
4+00 - 25+56	C.L.	2,050
12+45.7 - 13+21.7	Rt.	8
16+37.4 - 17+13.4	Rt.	8
17+51.8 - 18+27.8	Lt.	8
21+04.1 - 21+80.1	Rt.	8
23+22.0 - 23+98.0	Lt.	8
23+98.0 - 24+73.6	Lt.	8
24+00.8 - 24+90.6	Rt.	9
25+71 - 25+96.6	C.L.	24
26+09.6 - 30+07.7	C.L.	386
0+33 - 1+68	Hass St.	600

9" CONCRETE PAVEMENT (REINFORCED)

Sta. to Sta.	Location	S.V.
4+56 - 1+20	Rt.	393.3
6+40 - 1+20	Lt.	77.0
1+20 - 4+00	C.L.	1,378.9
4+00 - 25+56	C.L.	10,791.9
12+45.7 - 13+21.7	Rt.	50.4
16+37.4 - 17+13.4	Rt.	50.4
17+51.8 - 18+27.8	Lt.	50.4
21+04.1 - 21+74.1	Rt.	48.7
23+22.0 - 23+98.0	Lt.	49.9
23+98.0 - 24+73.6	Lt.	44.8
24+00.8 - 24+90.6	Rt.	61.5
25+71 - 25+96.6	C.L.	148.0
26+09.6 - 30+07.7	C.L.	1,954.8

CURB & GUTTER

Sta. to Sta.	Location	L.F.
4+16 - 0+57	Rt.	80.0
0+57 - 0+85	Rt.	32.0
0+85 - 4+00	Rt.	315.0
6+42 - 1+50	Lt.	70.0
1+50 - 4+00	Lt.	250.0
4+00 - 17+51.8	Lt.	1,351.8
4+00 - 12+45.7	Rt.	845.7
12+45.7 - 0+46.0 (P.C.)	Rt.	31.4
0+46.0 - 13+21.7 (P.T.)	Rt.	31.4
13+21.7 - 16+37.4	Rt.	315.7
16+37.4 - 0+46.0 (P.C.)	Rt.	31.4
0+46.0 - 17+13.4 (P.T.)	Rt.	31.4
17+13.4 - 21+04.1	Rt.	390.7
17+51.8 - 4+54	Lt.	31.4
4+54 - 18+27.8	Lt.	31.4
18+27.8 - 23+22.0	Lt.	494.2
21+04.1 - 0+46.0 (P.C.)	Rt.	31.4
0+46.0 - 21+74.1 (P.T.)	Rt.	31.4
21+74.1 - 24+00.8	Rt.	226.1
23+22.0 - 4+54	Lt.	31.9
4+54 - 4+42	Lt.	70.0
4+42 - 2+55.0	Lt.	24.0
0+30.4 - 2+49.0	Rt.	42.7
2+49.0 - 25+40.7	Rt.	20.1
26+05.4 - 30+12.2	Rt.	50.1
24+55.0 - 25+71.1	Rt.	406.8
26+14.4 - 30+07.7	Lt.	116.1
26+14.4 - 30+07.7	Lt.	392.9

TRAFFIC SAFETY ISLANDS

Sta. to Sta.	Type	Location
30+23 - 30+43	E	C.L.
23+02 - 23+23	D	C.L.
17+20 - 17+40	D	C.L.
12+25 - 12+45	D	C.L.
0+73 - 1+13	F	Lt.
0+81 - 1+04	G	Rt.
0+3+32 - 0+3+57	H	C.L.
2+90 - 3+10	D	C.L.

PROJECT  
U 08-3(36)

SHEET NO.  
**3A**

TOTAL SHEETS  
**31**

## DETAIL SUMMARY OF MISCELLANEOUS QUANTITIES

### CATCH BASINS, TYPE 1-A AND CONNECTIONS

Station	Location	Number	Grate Elev.	Disch. F/L	Depth	Reinf. Conc. Culv. Pipe Storm Sewer
1+22	43' Lt.	1	661.81	658.30	5.33	18" 12"
5+20	25.5' Lt.	1	661.05	657.25	5.33	20 L.F.
5+20	25.5' Rt.	1	661.05	657.15	5.33	2 "
7+50	25.5' Lt.	1	660.12	656.22	5.33	38 "
7+50	25.5' Rt.	1	660.12	656.22	5.33	2 "
12+73.5	25.5' Lt.	1	660.42	656.53	5.33	38 "
12+60	31' Rt.	1	660.20	656.30	5.33	2 "
16+65	25.5' Lt.	1	659.40	655.50	5.33	44 "
16+51	31' Rt.	1	659.18	655.28	5.33	2 "
17+81	25.5' Rt.	1	659.10	655.20	5.33	44 "
17+65	31.5' Lt.	1	658.88	654.98	5.33	38 "
18+18.5	31.5' Lt.	1	658.82	654.93	5.33	28 "
21+32	25.5' Lt.	1	658.19	654.29	5.33	42 "
21+18	30' Rt.	1	658.06	654.16	5.23	2 "
22+90	25.5' Lt.	1	657.83	654.83	5.33	46 "
22+87	25.5' Rt.	1	657.83	654.83	5.33	2 "
23+36	31' Lt.	1	657.60	653.90	5.33	38 "
23+92	28.5' Lt.	1	658.10	653.90	5.62	12 "
24+16	32.5' Rt.	1	658.34	654.44	5.33	12 "
24+45	31' Lt.	1	658.47	654.57	5.33	60 "
24+64.5	50' Rt.	1	658.70	654.80	5.33	60 "
28+30	25.5' Rt.	1	658.18	652.99	6.61	46 "
28+30	25.5' Lt.	1	658.18	653.59	6.61	46 "

### REINFORCED CONCRETE CULVERT PIPE STORM SEWER

Sta. to Sta.	Location	18" Lt. C.L.	24" Lt. C.L.	30" Lt. C.L.	ASTM C-76-57, Class IV
5+20 - 7+50	Lesey Blvd.	223	517	30"	36"
7+50 - 12+73.5	"				
12+73.5 - 16+65	"				
16+65 - 17+81	"				
17+81 - Stub	"				
17+81 - 21+32	"				
21+32 - 22+90	"				
0-18 - 2+56	Hess St. 12.5' Rt. C.L.	344	36		
2+56 - 3+94	"	151			
3+94 - 6+62	"				
6+62 - 10+05	"				
10+05 - 13+31.5	"				
13+31.5 - 16+68.5	"				
16+68.5 - 18+95	"				
18+95 - 19+05	"				

### MANHOLES, TYPE 2-J

Sta.	Location	Cover Elev.	Disc. Flow Elev.	Depth	No.	Station	Location	Utility	No.
5+20	18' Lt.	661.39	655.04	5.3	1	1+47	C.L.	San. Sewer	1
7+50	18' Lt.	660.46	654.35	5.0	1	4+91	"	"	1
12+73.5	18' Lt.	660.77	652.78	6.9	1	8+98	"	"	1
16+65	18' Lt.	659.74	653.17	5.5	1	12+84	"	"	1
17+81	18' Lt.	659.44	653.29	5.1	1	16+74	"	"	1
21+32	18' Lt.	658.53	653.64	3.8	1	17+92	"	"	1
24+90	18' Lt.	658.17	653.80	3.3	1	21+35	"	"	1
						23+99	"	"	1
						0" J+28	"	"	1
						27+76	"	"	1
2+56	12.5' Rt.	660.5	652.52	6.9	1				
3+94	12.5' Rt.	660.0	652.41	6.5	1				
6+62	10' Rt.	659.3	652.20	6.0	1				
10+05	10' Rt.	660.0	649.86	10.1	1				
13+31.5	10' Rt.	665.0	648.79	15.1	1				
16+69	10' Rt.	662.0	647.71	13.2	1				
18+95	10' Rt.	652.0	638.75	12.2	1				

### CATCH BASIN COVERS, TYPE "A"

Station	Location	No.
4" A+56	21' Rt.	1

### INLETS, TYPE "Z" AND CONNECTION

Station	Location	Grate Elev.	Discharge Flow Line
1+32	47' Lt.	660.50	658.70

### ADJUSTING MANHOLE COVERS

Station	Location	Utility	No.
1+47	C.L.	San. Sewer	1
4+91	"	"	1
8+98	"	"	1
12+84	"	"	1
16+74	"	"	1
17+92	"	"	1
21+35	"	"	1
23+99	"	"	1
0" J+28	"	"	1
27+76	"	"	1

### CATCH BASIN, TYPE 1-B AND CONNECTION

Sta.	Location	Grate Elev.	Disc. Flow Elev.	Depth	No.
1+12	25.5' Rt.	661.81	660.35	5.33	1

### ABANDONING INLETS

Station	Location	No.
1+06	53' Lt.	1
1+27	38' Lt.	1

Station	Location	No.
1+08	24' Lt.	1

Station	Location	Elev.
	24' Lt.	662.22

PROJECT	SHEET NO.	TOTAL SHEETS
U 08-3(36)	3B	31

S.P.R. DIVISION	PROJECT	SHEET NUMBER	TOTAL SHEETS
4	U 08-3(36)	4	31

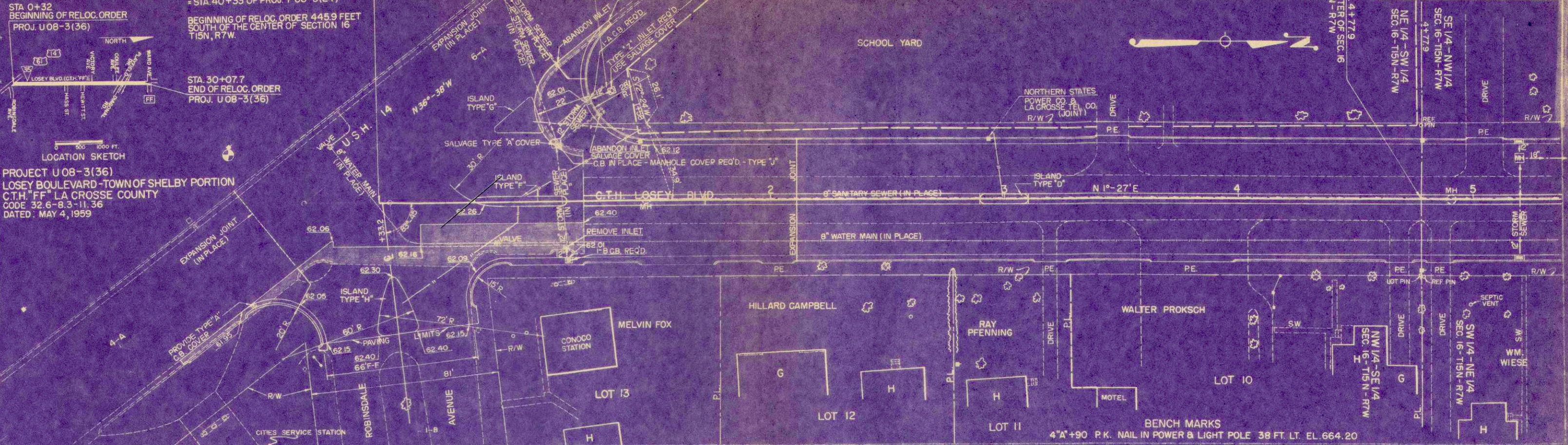
CITY OF LA CROSSE  
BOARD OF EDUCATION

STA. 0+32  
BEGINNING OF PROJECT U 08-3(36)  
= STA. 40+33 OF PROJ. F 08-3(24)

STA. 30+07.7  
END OF RELOC. ORDER  
PROJ. U 08-3(36)

STATION 4+779  
CENTER OF SEC. 16  
T15N - R7W

PROJECT U 08-3(36)  
LOSEY BOULEVARD - TOWN OF SHELBY PORTION  
C.T.H. "FF" LA CROSSE COUNTY  
CODE 32.6-8.3-11.36  
DATED: MAY 4, 1959



NET LENGTH OF CENTERLINE STA. 0+32-5+00-468 LIN. FT.

STA. 0+32  
BEGINNING OF PROJECT U 08-3(36)

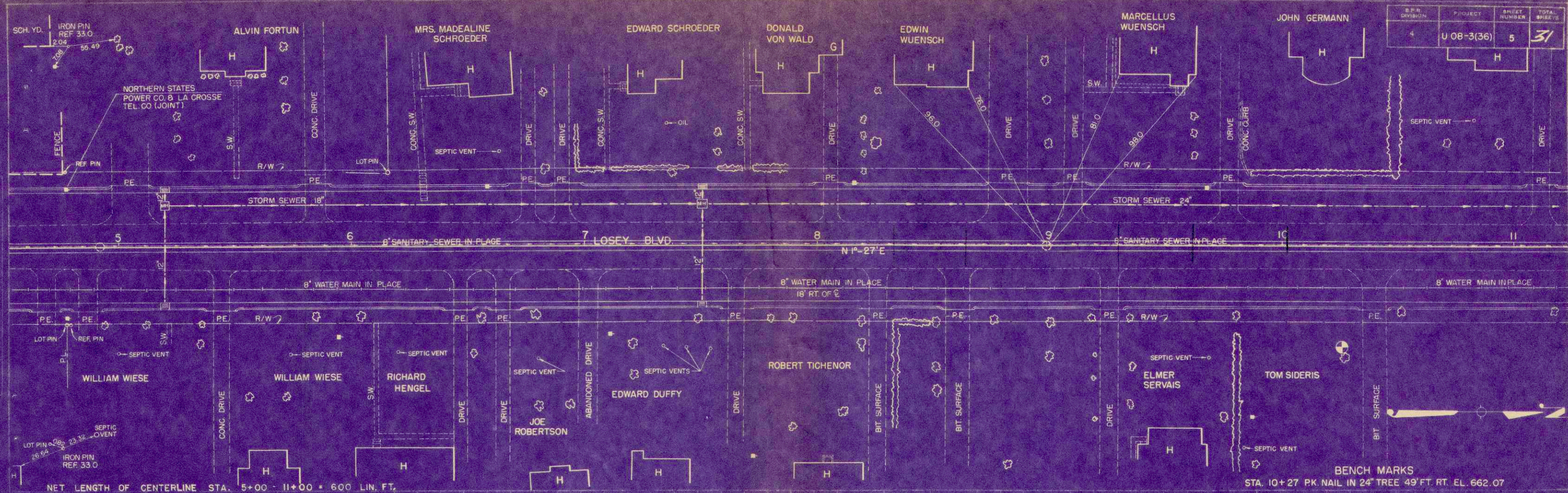
	PRESENT	PROPOSED
SANITARY SEWER	—	—
WATER MAIN	—	—
STORM SEWER	—	—
MAN HOLES	○	○
CATCH BASINS	□	□
INLETS	○	○
GUTTER LINE	—	—
CURB LINE	—	—
TELEPHONE DUCT	—	—
HYDRANT	⊕	⊕
TREES	⊕	⊕
TREES TO BE REMOVED	⊕	⊕
POWER POLE	⊕	⊕
TELEPHONE POLE	⊕	⊕
3" CONDUIT	—	—
REMOVAL	—	—
WATER VALVE	⊕	⊕

	STA. 0+32 BEGINNING OF PROJECT U 08-3(36)																				
664	+ 0.30%																				
662	- 0.60%																				
660	PL 3+00 663.00																				
T.C. LT.	62.68	62.35	62.45	62.53	62.60	62.66	62.75	62.80	67.79	62.72	62.60	62.45	62.30	62.15	62.00	61.85	61.70	T.C. LT.			
RADIUS APRON LT.	62.35	62.02	62.12	62.12	62.20	62.27	62.35	62.42	62.47	62.46	62.39	62.27	62.12	61.97	61.82	61.67	61.52	61.37	APRON LT.		
APRON LT.	62.12	62.20	62.27	62.35	62.42	62.47	62.46	62.39	62.27	62.12	61.97	61.82	61.67	61.52	61.37	61.22	61.07	60.92	APRON LT.		
14' LT.	62.35	62.40	62.46	62.57	62.59	62.66	62.71	62.70	62.63	62.51	62.36	62.21	62.06	61.91	61.76	61.61	61.46	61.31	14' LT.		
6	62.31	62.21	62.40	62.46	62.55	62.63	62.70	62.78	62.85	62.90	62.89	62.82	62.70	62.55	62.40	62.25	62.10	61.95	61.80		
14' RT.		62.22	62.30	62.36	62.44	62.51	62.59	62.66	62.71	62.70	62.63	62.51	62.36	62.21	62.06	61.91	61.76	61.61	61.46	14' RT.	
APRON RT.		62.07	62.04	62.01	62.12	62.20	62.27	62.35	62.42	62.47	62.46	62.39	62.27	62.12	61.97	61.82	61.67	61.52	61.37	APRON RT.	
T.C. RT.		62.40	62.37	62.34	62.45	62.53	62.60	62.68	62.75	62.80	62.79	62.72	62.60	62.45	62.30	62.15	62.00	61.85	61.70	T.C. RT.	
	0	1	2	3	4	5	6	7	8	9	10	11	12	13	14	15	16	17	18	19	20

DATE: 1-5-59  
 DESIGNED BY: W.F.T.  
 DRAWN BY: W.F.T.  
 CHECKED BY: W.F.T.  
 NO. 9032

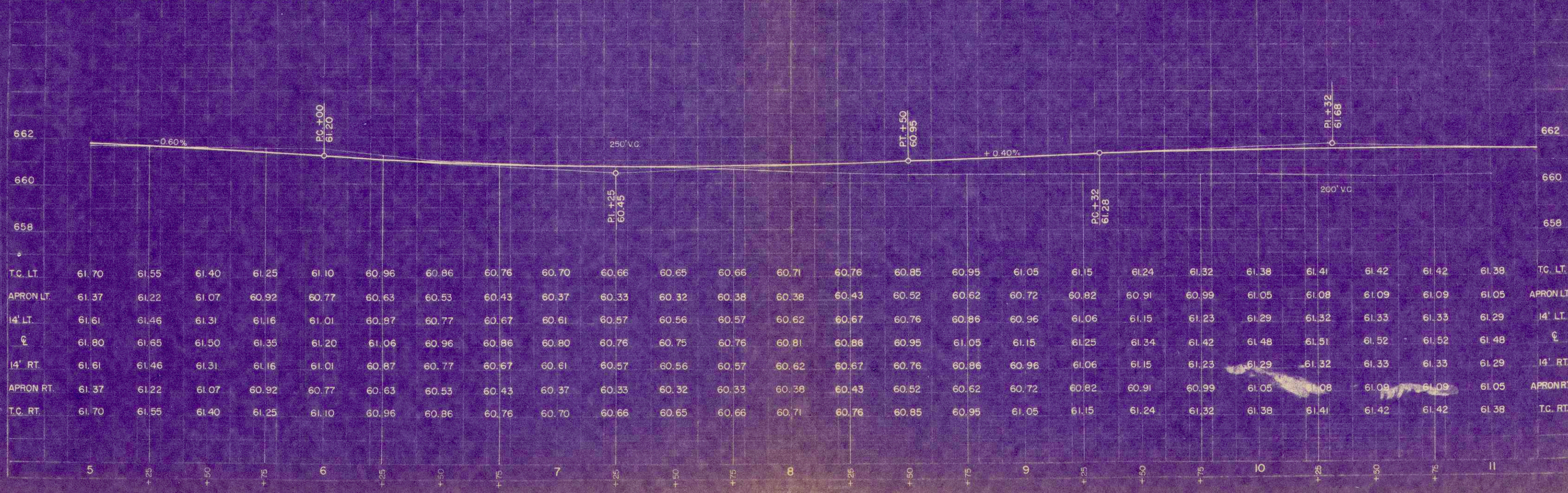
DATE: 1-5-59  
 DESIGNED BY: W.F.T.  
 DRAWN BY: W.F.T.  
 CHECKED BY: W.F.T.  
 NO. 9032

S.P. SHEET NUMBER	PROJECT	SHEET NUMBER	TOTAL SHEETS
4	U 08-3(36)	5	31

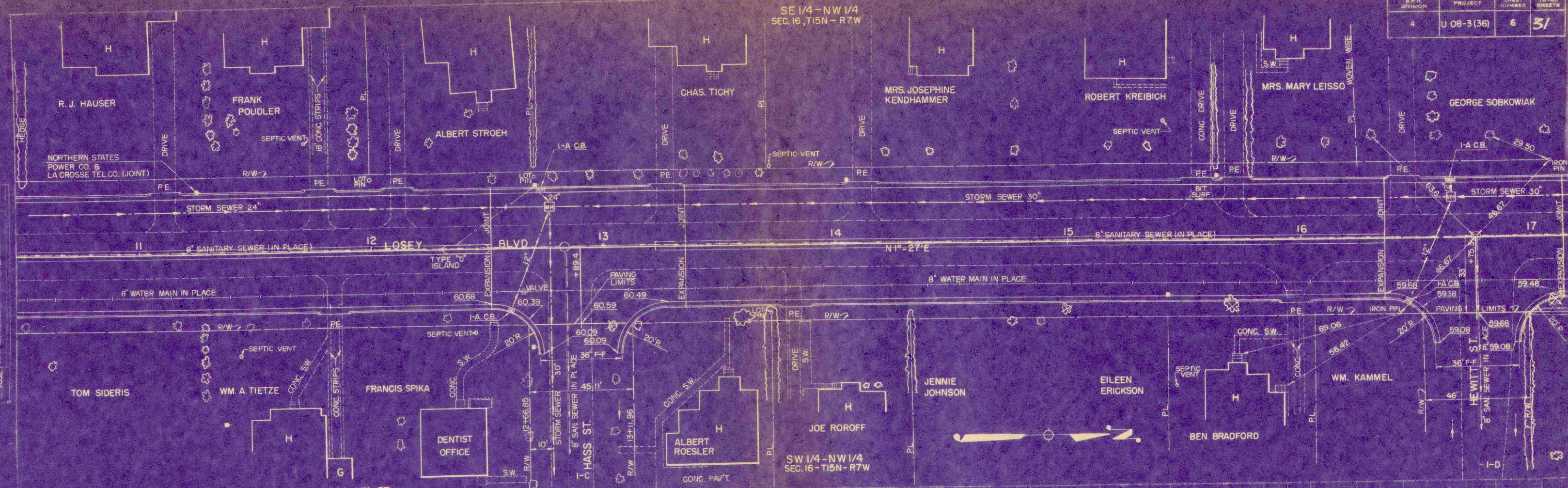


NET LENGTH OF CENTERLINE STA. 5+00 - 11+00 = 600 LIN. FT.

BENCH MARKS  
STA. 10+27 PK. NAIL IN 24" TREE 49' FT. RT. EL. 662.07



Station	5	5+25	5+50	5+75	6	6+25	6+50	6+75	7	7+25	7+50	7+75	8	8+25	8+50	8+75	9	9+25	9+50	9+75	10	10+25	10+50	10+75	11	
T.C. LT.	61.70	61.55	61.40	61.25	61.10	60.96	60.86	60.76	60.70	60.66	60.65	60.66	60.71	60.76	60.85	60.95	61.05	61.15	61.24	61.32	61.38	61.41	61.42	61.42	61.38	T.C. LT.
APRON LT.	61.37	61.22	61.07	60.92	60.77	60.63	60.53	60.43	60.37	60.33	60.32	60.38	60.38	60.43	60.52	60.62	60.72	60.82	60.91	60.99	61.05	61.08	61.09	61.09	61.05	APRON LT.
14' LT.	61.61	61.46	61.31	61.16	61.01	60.87	60.77	60.67	60.61	60.57	60.56	60.57	60.62	60.67	60.76	60.86	60.96	61.06	61.15	61.23	61.29	61.32	61.33	61.33	61.29	14' LT.
℄	61.80	61.65	61.50	61.35	61.20	61.06	60.96	60.86	60.80	60.76	60.75	60.76	60.81	60.86	60.95	61.05	61.15	61.25	61.34	61.42	61.48	61.51	61.52	61.52	61.48	℄
14' RT.	61.61	61.46	61.31	61.16	61.01	60.87	60.77	60.67	60.61	60.57	60.56	60.57	60.62	60.67	60.76	60.86	60.96	61.06	61.15	61.23	61.29	61.32	61.33	61.33	61.29	14' RT.
APRON RT.	61.37	61.22	61.07	60.92	60.77	60.63	60.53	60.43	60.37	60.33	60.32	60.38	60.38	60.43	60.52	60.62	60.72	60.82	60.91	60.99	61.05	61.08	61.09	61.09	61.05	APRON RT.
T.C. RT.	61.70	61.55	61.40	61.25	61.10	60.96	60.86	60.76	60.70	60.66	60.65	60.66	60.71	60.76	60.85	60.95	61.05	61.15	61.24	61.32	61.38	61.41	61.42	61.42	61.38	T.C. RT.



662																										662			
660																										660			
658																										658			
TC LT.	61.38	61.34	61.27	61.21	61.14	61.08	61.02	60.98	60.93	60.88	60.83	60.75	60.69	60.62	60.56	60.49	60.43	60.36	60.30	60.23	60.17	60.10	60.04	60.01	59.95	59.91	59.86	59.81	T.C. LT.
APRON LT.	61.05	61.01	60.94	60.88	60.81	60.75	60.69	60.65	60.60	60.55	60.50	60.42	60.36	60.29	60.23	60.16	60.10	60.03	59.97	59.90	59.84	59.77	59.71	59.68	59.62	59.58	59.53	59.48	APRON LT.
14' LT.	61.29	61.25	61.18	61.12	61.05	60.99	60.93	60.89	60.84	60.79	60.74	60.66	60.60	60.53	60.47	60.40	60.34	60.27	60.21	60.14	60.08	60.01	59.95	59.92	59.86	59.82	59.77	59.72	14' LT.
14' RT.	61.48	61.44	61.37	61.31	61.24	61.18	61.12	61.08	61.03	60.98	60.93	60.85	60.79	60.72	60.66	60.59	60.53	60.46	60.40	60.33	60.27	60.20	60.14	60.11	60.05	60.01	59.96	59.91	14' RT.
APRON RT.	61.05	61.01	60.94	60.88	60.81	60.75	60.69	60.65	60.60	60.55	60.50	60.42	60.36	60.29	60.23	60.16	60.10	60.03	59.97	59.90	59.84	59.77	59.71	59.68	59.62	59.58	59.53	59.48	APRON RT.
T.C. RT.	61.38	61.34	61.27	61.21	61.14	61.08	61.02	60.98	60.93	60.88	60.83	60.75	60.69	60.62	60.56	60.49	60.43	60.36	60.30	60.23	60.17	60.10	60.04	60.01	59.95	59.91	59.86	59.81	T.C. RT.
	11	25	50	75	100	125	150	175	200	225	250	275	300	325	350	375	400	425	450	475	500	525	550	575	600	625	650	675	700

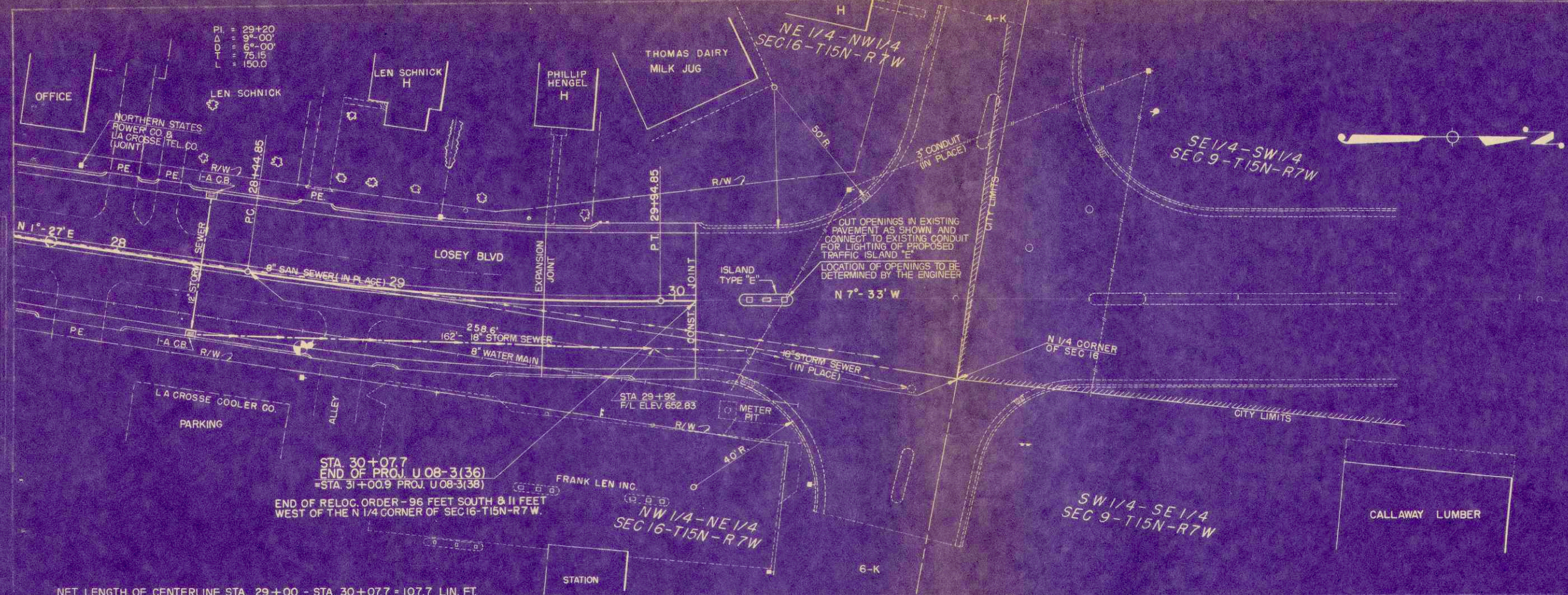
DATE: 1-27-69  
 W.T. LI  
 W.T. LI  
 PLAN: 9032  
 SCALE: 1" = 40'

DATE: 1-27-69  
 W.T. LI  
 W.T. LI  
 PLAN: 9032  
 SCALE: 1" = 40'



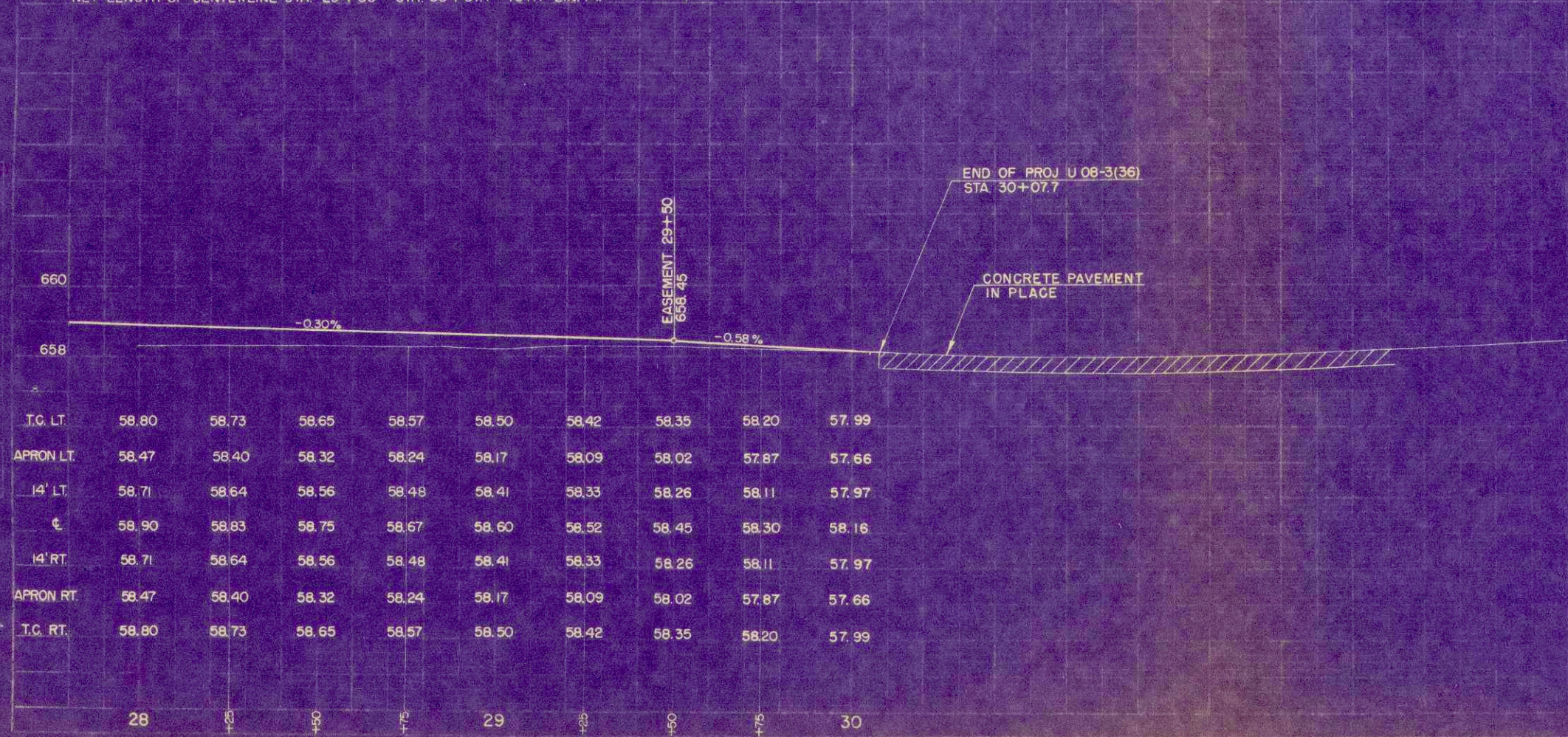






STA 30+07.7  
 END OF PROJ. U 08-3(36)  
 = STA 31+00.9 PROJ. U 08-3(36)  
 END OF RELOC. ORDER - 96 FEET SOUTH & 11 FEET WEST OF THE N 1/4 CORNER OF SEC 16-T15N-R7W.

NET LENGTH OF CENTERLINE STA. 29+00 - STA. 30+07.7 = 107.7 LIN. FT.



T.C. LT.	58.80	58.73	58.65	58.57	58.50	58.42	58.35	58.20	57.99
APRON LT.	58.47	58.40	58.32	58.24	58.17	58.09	58.02	57.87	57.66
14' LT.	58.71	58.64	58.56	58.48	58.41	58.33	58.26	58.11	57.97
℄	58.90	58.83	58.75	58.67	58.60	58.52	58.45	58.30	58.16
14' RT.	58.71	58.64	58.56	58.48	58.41	58.33	58.26	58.11	57.97
APRON RT.	58.47	58.40	58.32	58.24	58.17	58.09	58.02	57.87	57.66
T.C. RT.	58.80	58.73	58.65	58.57	58.50	58.42	58.35	58.20	57.99
	28	30	40	50	60	70	80	90	30

PLAN  
 DRAWN BY  
 CHECKED BY  
 DATE  
 9032

PROFILE  
 DRAWN BY  
 CHECKED BY  
 DATE  
 9032

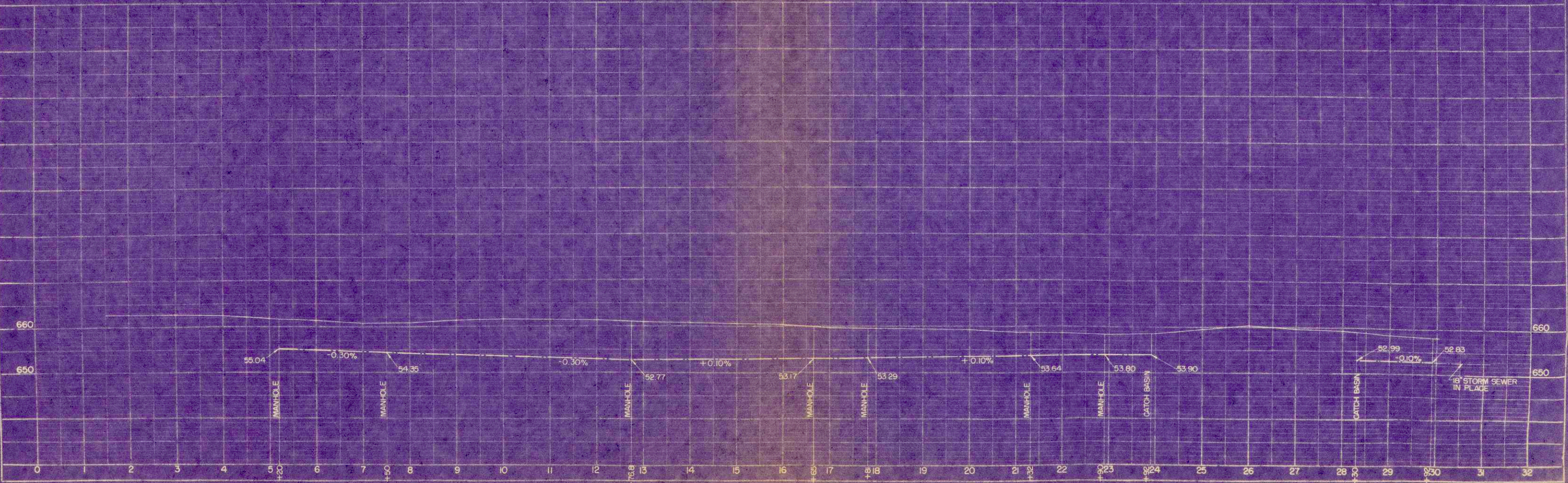
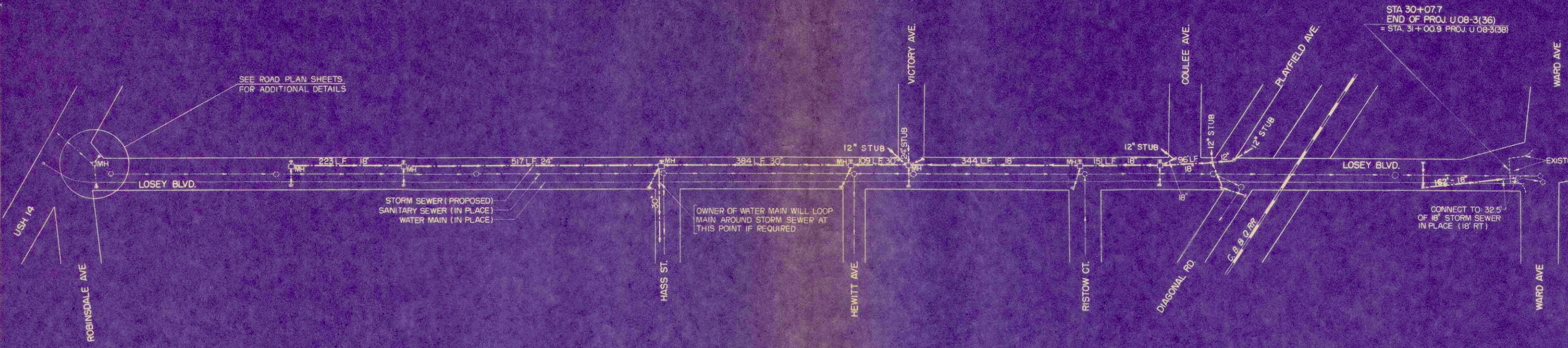
S.P.R. NUMBER	PROJECT	SHEET NUMBER	TOTAL SHEETS
4	U 08-3(36)	10	31

PROPOSED STORM SEWER LAYOUT  
LOSEY BOULEVARD



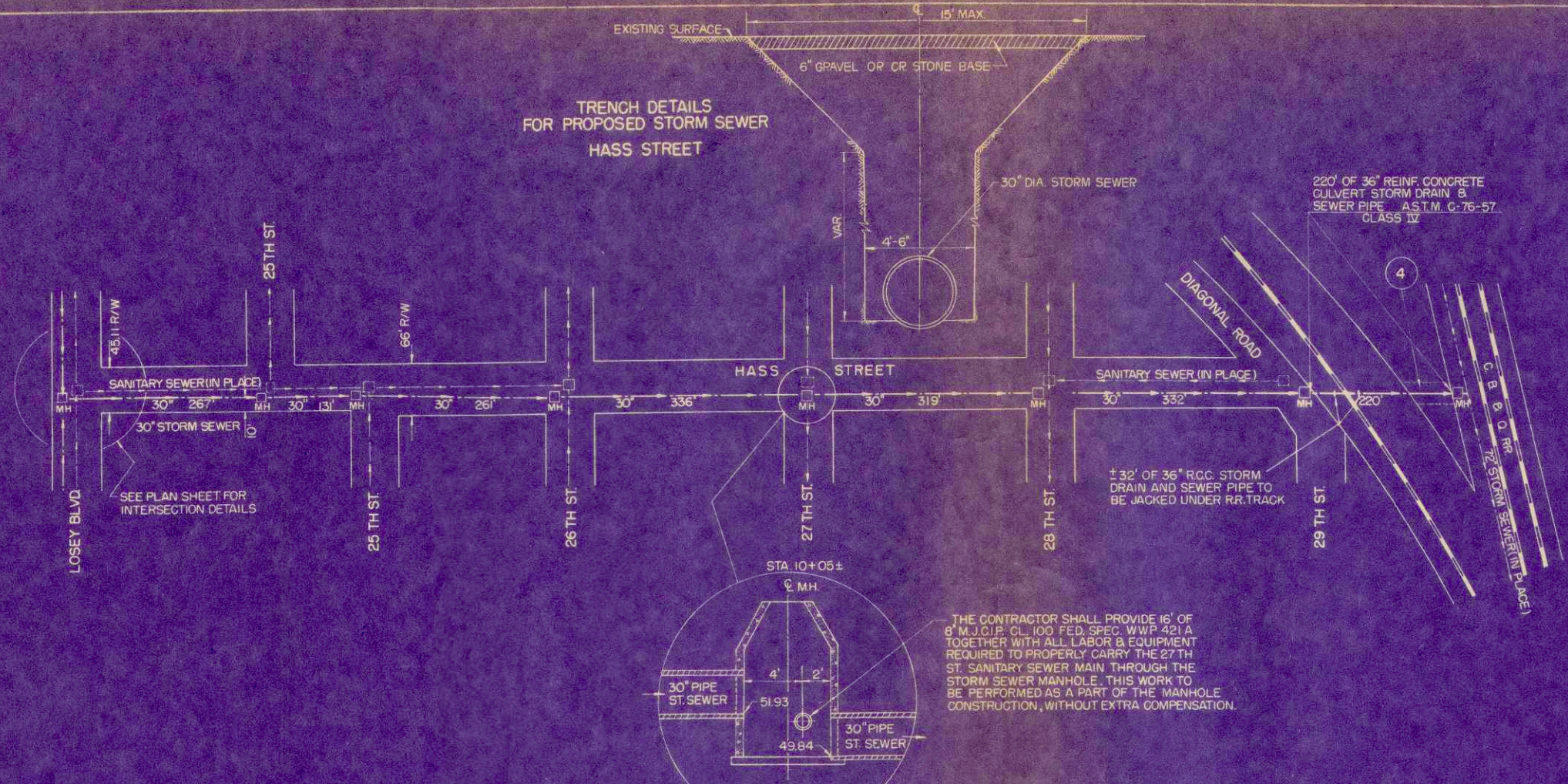
DATE: 1-57  
BY: W.H.T.  
O.O.B.  
CHECKED: [Signature]  
NO. 9032

DATE: 1-57  
BY: W.H.T.  
O.O.B.  
CHECKED: [Signature]  
NO. 9032

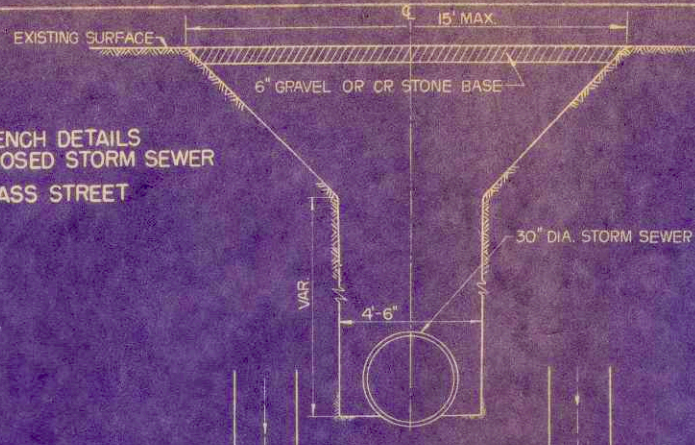


S.P.R. DIVISION	PROJECT	SHEET NUMBER	TOTAL SHEETS
4	U 08-3(36)	11	31

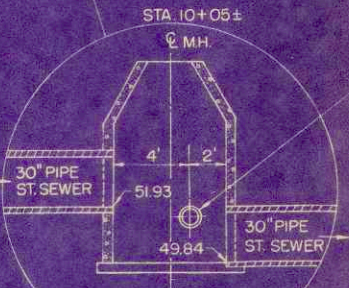
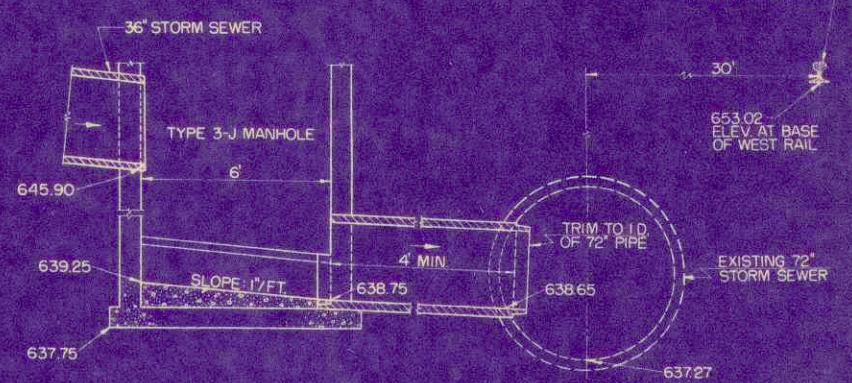
PROPOSED STORM SEWER LAYOUT  
HASS STREET



TRENCH DETAILS  
FOR PROPOSED STORM SEWER  
HASS STREET

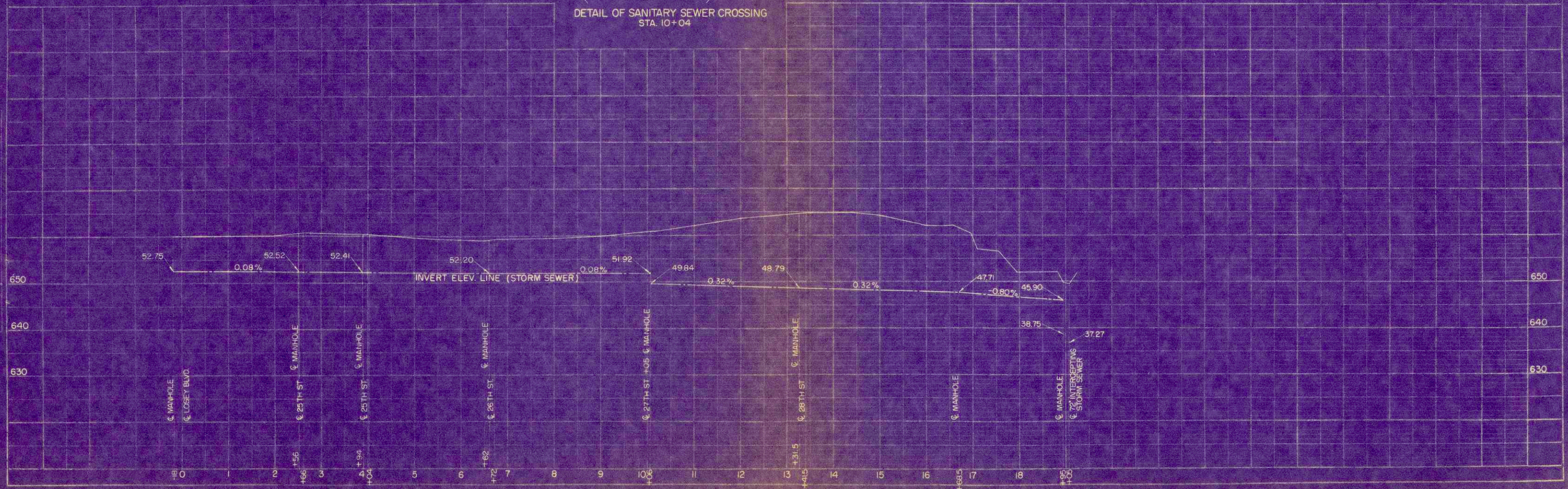


DETAIL OF INTERCEPTING SEWER CONNECTION  
STA. 10+95



THE CONTRACTOR SHALL PROVIDE 16' OF 8" M.J.C.P. CL. 100 FED. SPEC. WWP 421 A TOGETHER WITH ALL LABOR & EQUIPMENT REQUIRED TO PROPERLY CARRY THE 27 TH ST. SANITARY SEWER MAIN THROUGH THE STORM SEWER MANHOLE. THIS WORK TO BE PERFORMED AS A PART OF THE MANHOLE CONSTRUCTION, WITHOUT EXTRA COMPENSATION.

DETAIL OF SANITARY SEWER CROSSING  
STA. 10+04



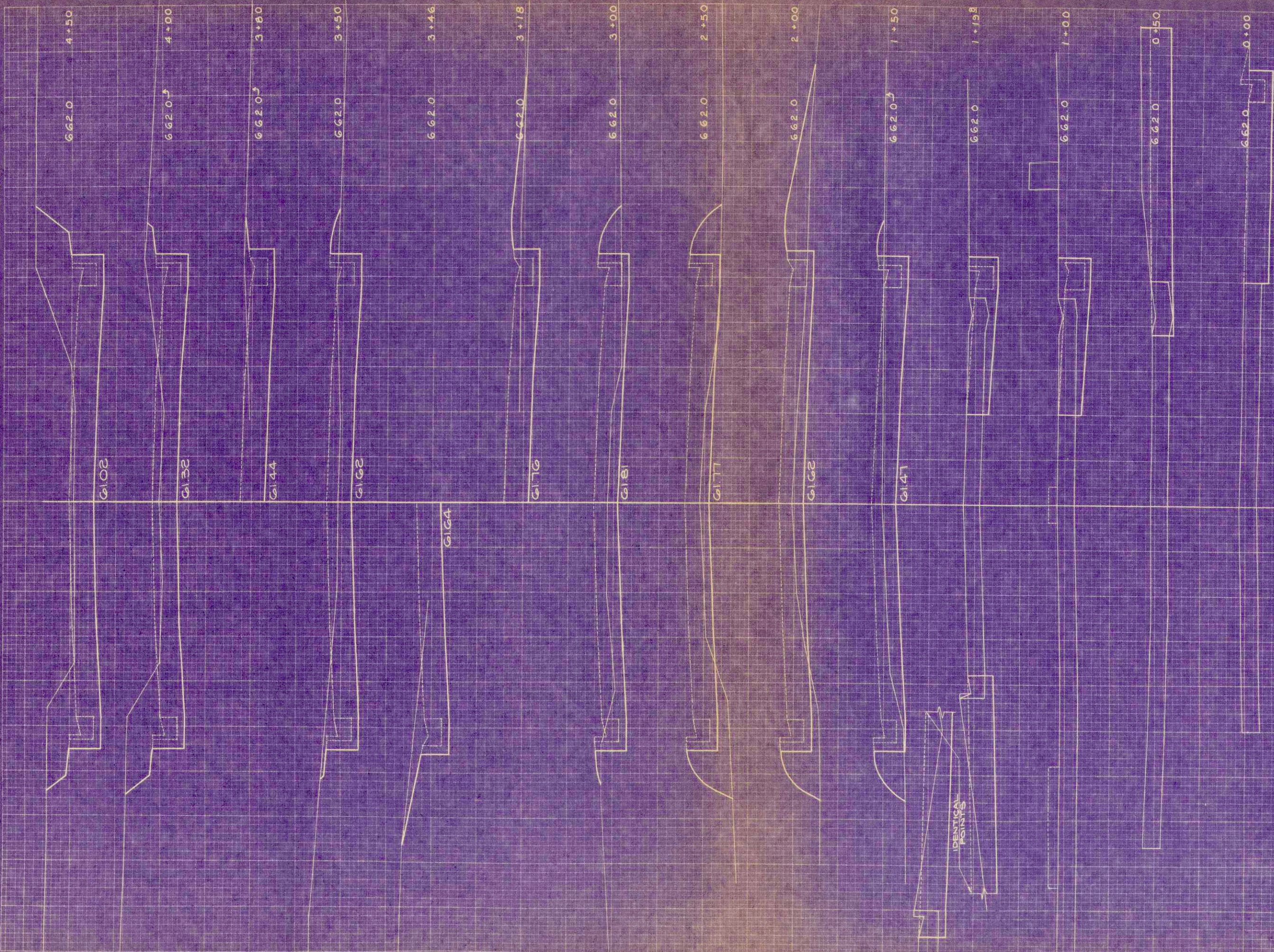
DATE: 1-57  
4-59  
W.H.T.  
O.C.B.  
PLUM  
CHECKED BY: L.L.  
DATE: 1-57  
4-59

DATE: 1-57  
4-59  
W.H.T.  
O.C.B.  
PROFILE  
CHECKED BY: L.L.  
DATE: 1-57  
4-59

FINAL SURVEY  
 QUANTITY  
 PLACING  
 ROUTE NUMBER  
 PROJECT NO.

DATE  
 1-5-7  
 BY  
 L. W. H. F.  
 L. W. F.  
 W. O. W.

ORIGINAL SURVEY  
 FACILITY  
 LOT 10  
 NO. 502



1" = 5' HOR.  
 1" = 2' VERT.

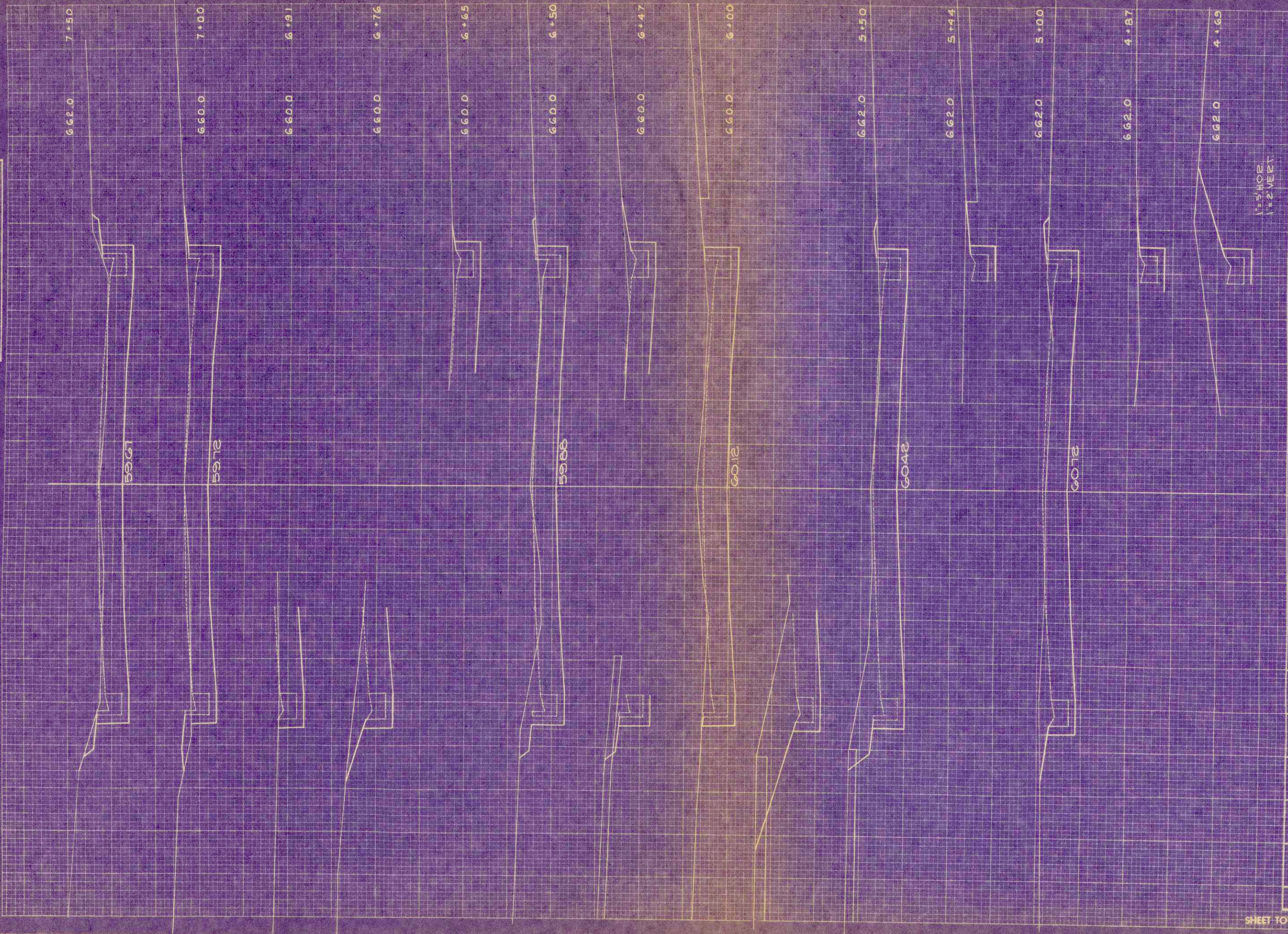
B.P.R. DISTRICT OFFICE		PROJECT	SHEET NUMBER	TOTAL SHEETS
WIS. 4		U08-360	23	31

STATION	DISTANCE	YARDAGE	
		EXCAVATION	
		UNCL	FILL
22			
0		0	0
+08		0	0
+50	65		0
+73	44		0
+93	28		0
+100	6		0
1			
+108	33		0
+50	59		4
2			
+50	52		20
3			
+50	30		30
4			
+50	35		20
5			
+50	72		7
6			
+50	113		2
7			
+50	146		0
8			
+50	142		2
SHEET TOTAL		843	85

ORIGINAL SURVEY PLANS BY  
 W.H.T. P.E.E. 6-17  
 L.L.J. P.E.E. 6-17  
 L.O.F.W.  
 W.F.W.  
 NO. 5092

FINAL SURVEY PLANS BY  
 INWARDED PLANNING  
 SURVEY PLANNING  
 ROSE BOOKS, TWIN LAKES  
 WISCONSIN



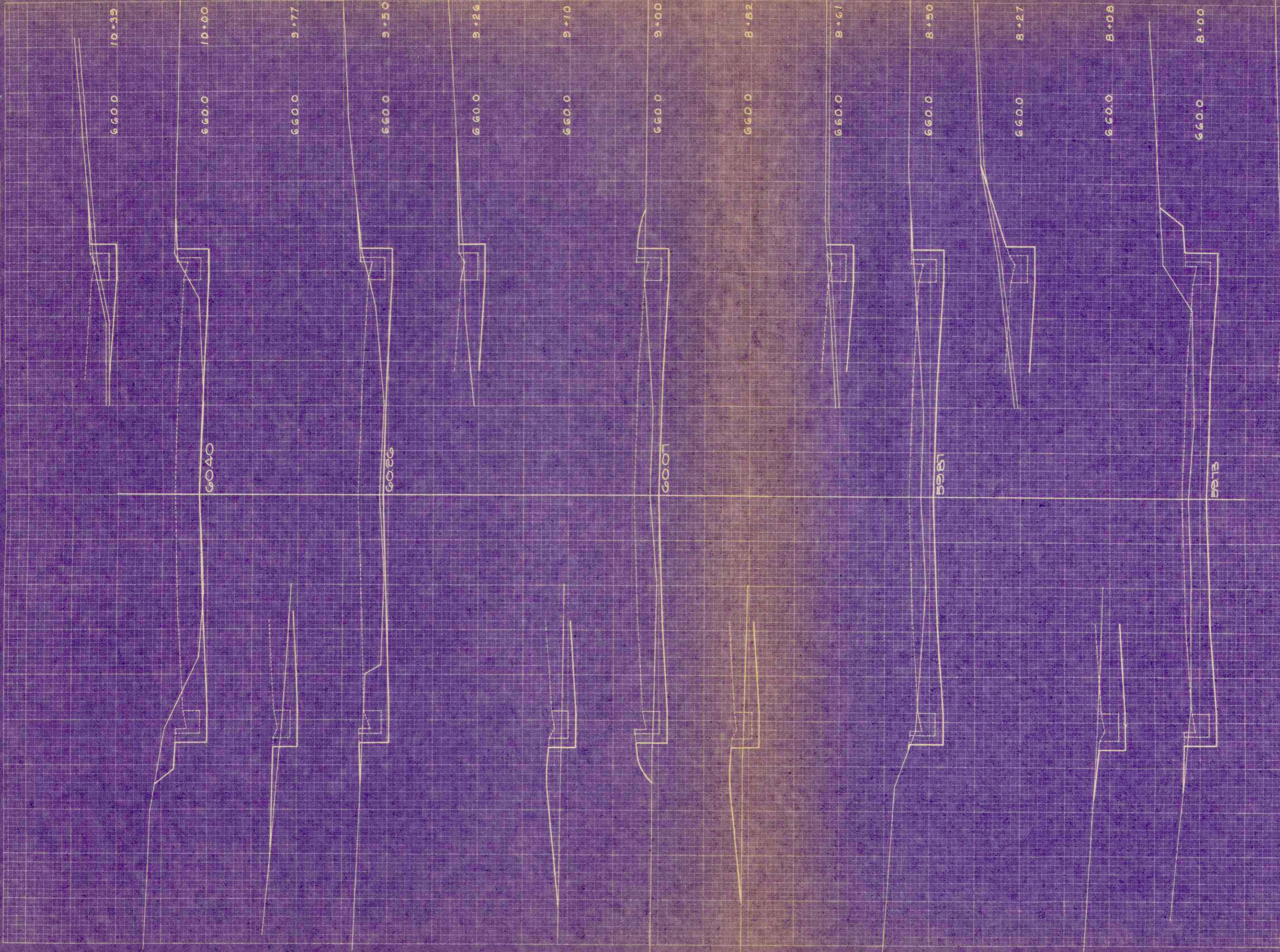
V=5402  
 V=2 VEGET.

R.P.R. DISTRICT OFFICE	PROJECT	SHEET NUMBER	TOTAL SHEETS
WIS. 4	U083(2)	24	31

STATION	DISTANCE	YARDAGE	
		EXCAVATION	
		UNCL	FILL
5961	100		0
5972	100		2
5988	100		2
6012	110		2
6042	110		2
6072	111		2
SHEET TOTAL		740	12

FINAL SURVEY  
 DATE: \_\_\_\_\_  
 BY: \_\_\_\_\_  
 CHECKED: \_\_\_\_\_  
 NO. \_\_\_\_\_

ORIGINAL SURVEY  
 DATE: \_\_\_\_\_  
 BY: \_\_\_\_\_  
 CHECKED: \_\_\_\_\_  
 NO. 9032



1" = 5' HOR. 660.0  
 1" = 2' VERT.

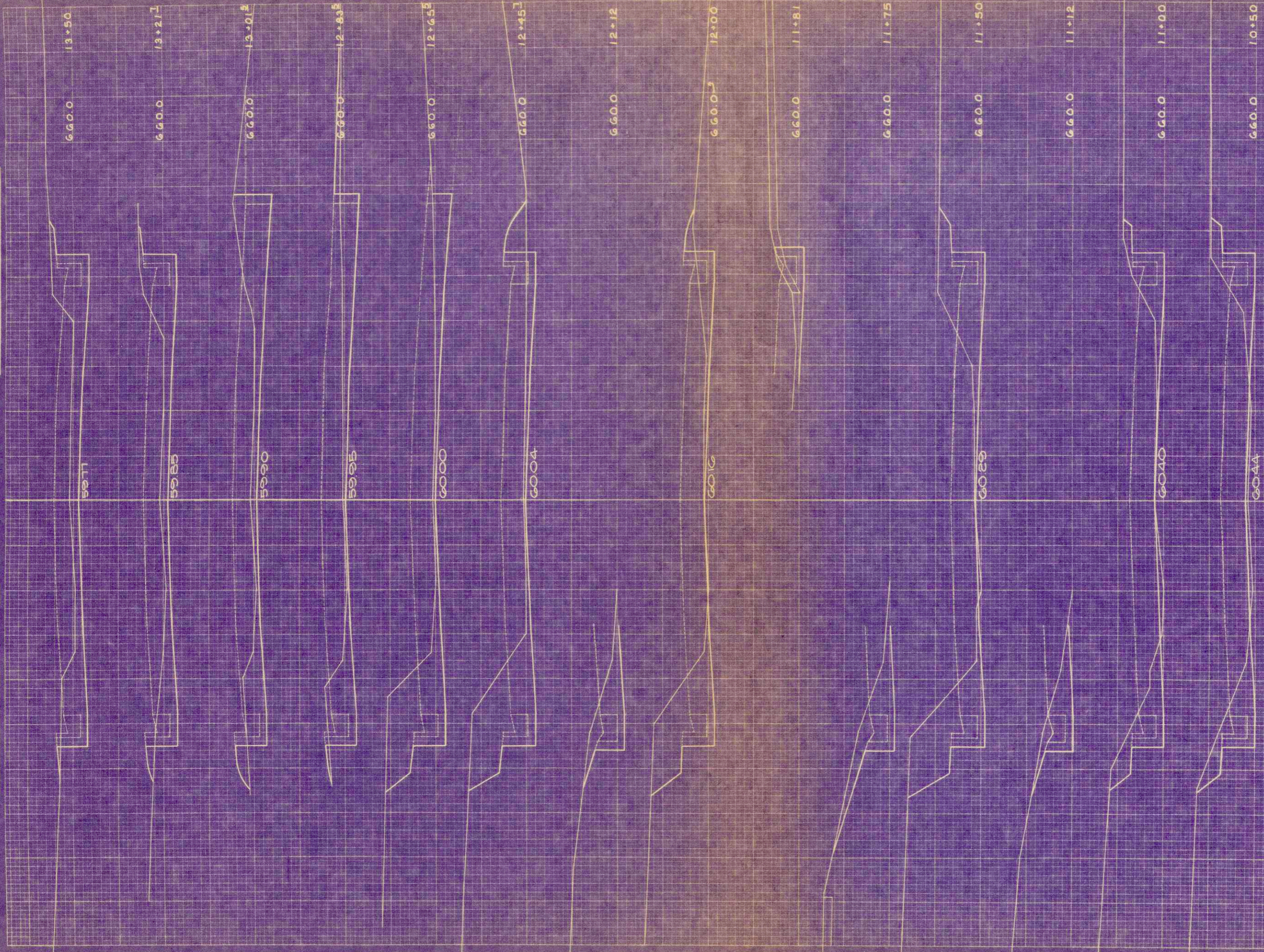
STATION	DISTANCE	YARDAGE	
		EXCAVATION	
		UNCL	FILL
0			
+50	96		2
0	67		4
+50	52		4
0	48		2
+50	46		4
SHEET TOTAL		309	16

B.P.R. DISTRICT OFFICE	PROJECT	SHEET NUMBER	TOTAL SHEETS
WIS. 4	JOB-38G	25	31



FINAL SURVEY BY DATE  
 SUPPORTED BY  
 PLANNED BY  
 NOTE BOOK NO.  
 AREA CALCULATED

ORIGINAL SURVEY BY DATE  
 DRAWN BY  
 CHECKED BY  
 DATE  
 W.H.F.F.  
 L.I.V.  
 W.O.V.



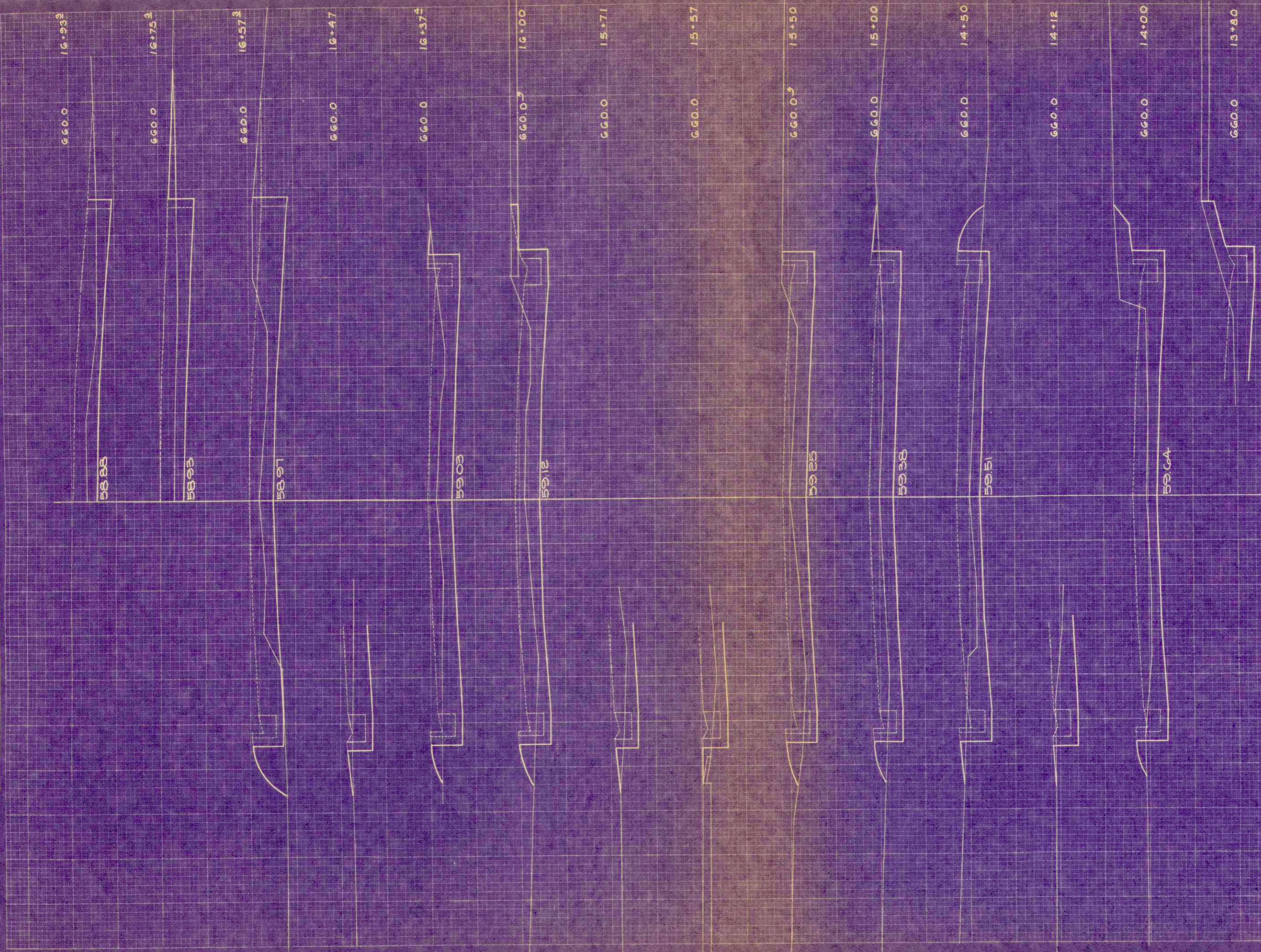
1" = 5' HOR.  
 1" = 2' VERT.

R.F.R. DISTRICT OFFICE		PROJECT	SHEET NUMBER	TOTAL SHEETS
WIS. 4		U 08-3(86)	26	31
STATION	DISTANCE	YARDAGE		FILL
		UNCL.	EXCAVATION	
	+30			
	11	46		6
	150	68		2
	12	80		4
	+45	81		6
	+65	30		2
	+83	24		2
	+130	22		2
	+21	26		2
SHEET TOTAL		357		26

FINAL SURVEY  
 DATE: 1-27-58  
 BY: W.H.F.F.  
 CHECKED: L.L.O.B.  
 DRAWN: W.E.W.

ORIGINAL SURVEY  
 DATE: 1-27-58  
 BY: W.H.F.F.  
 CHECKED: L.L.O.B.  
 DRAWN: W.E.W.

R.P.D. DISTRICT OFFICE  
 WIS. 4  
 PROJECT: U08-3(86)  
 SHEET NUMBER: 27  
 TOTAL SHEETS: 31



1" = 5' HORZ  
 1" = 2' VERT

STATION	DISTANCE	YARDAGE			
		EXCAVATION			
		UNCL			FILL
10					
+20					
+50	97			2	
14	76			2	
+50	97			6	
15	59			6	
+50	10		6	6	
16	74			6	
+50	57			2	
+70	30			4	
+70	26			4	
+90	24			6	
+110	17			6	
SHEET TOTAL					
		557		50	

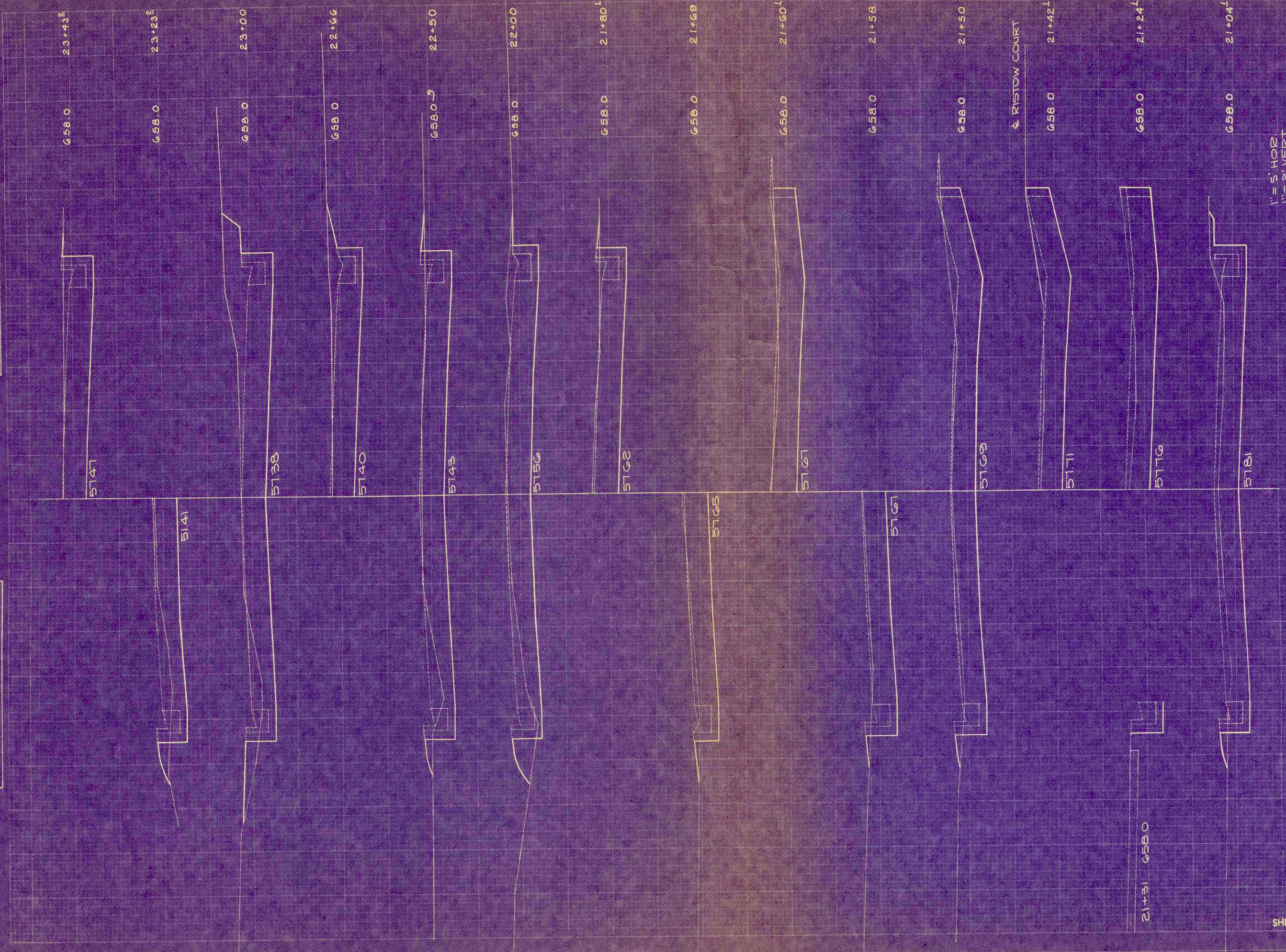


FINAL SURVEY  
 DISTRICT OFFICE  
 PROJECT NUMBER  
 SHEET NUMBER  
 TOTAL SHEETS

ORIGINAL SURVEY  
 DATE  
 9032

W.J.H.F.F.  
 L.L.O.  
 W.F.W.

E.P.R. DISTRICT OFFICE  
 WIS. 4  
 PROJECT 1008-3(30)  
 SHEET NUMBER 29  
 TOTAL SHEETS 31

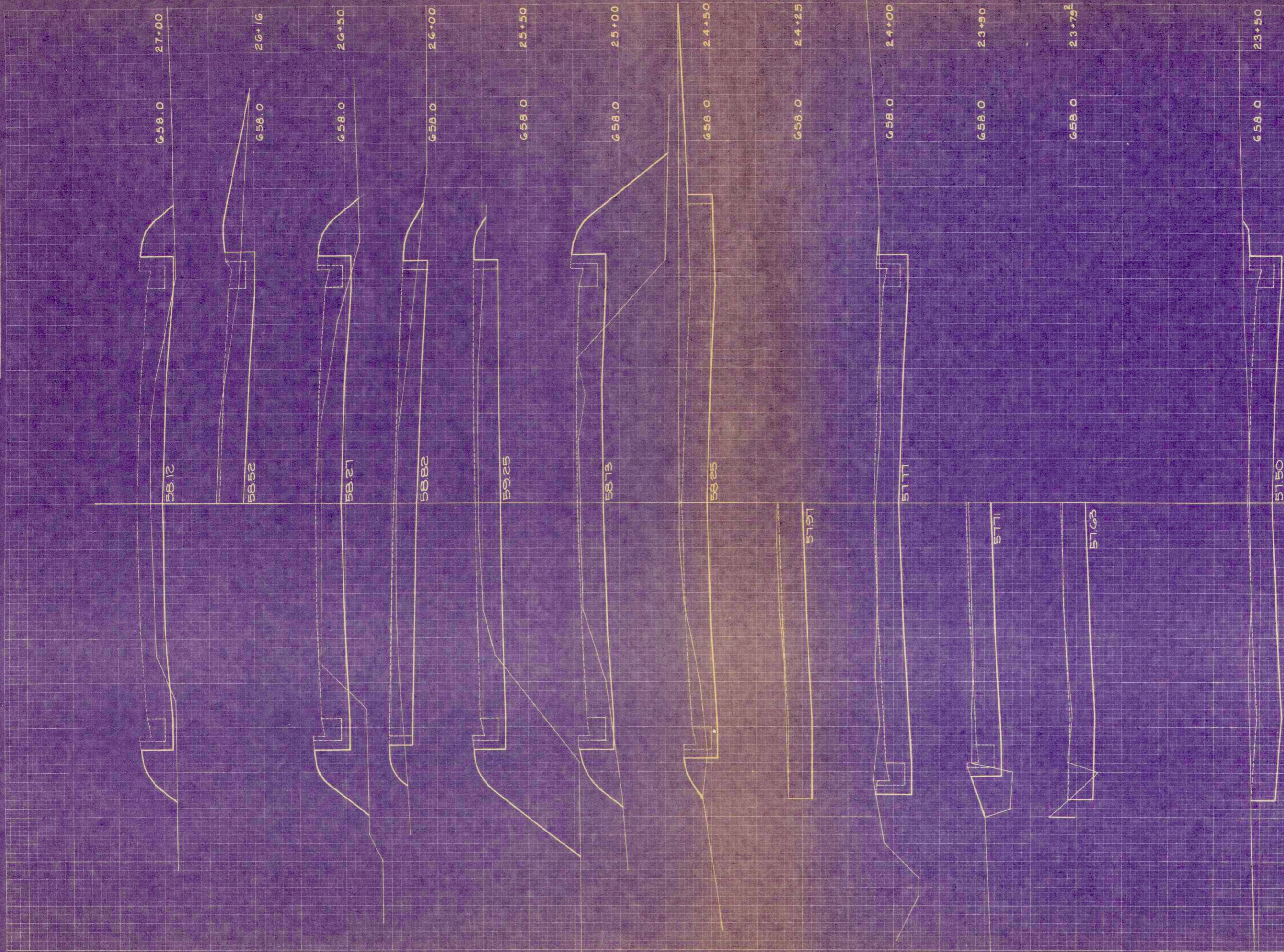


1" = 5' HOR.  
 1" = 2' VERT.

STATION	DISTANCE	YARDAGE		
		EXCAVATION		
		UNCL.		FILL
21+31	658.0			
21+30	658.0			
21+29	658.0			
21+28	658.0			
21+27	658.0			
21+26	658.0			
21+25	658.0			
21+24	658.0			
21+23	658.0			
21+22	658.0			
21+21	658.0			
21+20	658.0			
21+19	658.0			
21+18	658.0			
21+17	658.0			
21+16	658.0			
21+15	658.0			
21+14	658.0			
21+13	658.0			
21+12	658.0			
21+11	658.0			
21+10	658.0			
21+09	658.0			
21+08	658.0			
21+07	658.0			
21+06	658.0			
21+05	658.0			
21+04	658.0			
SHEET TOTAL		601		18

ORIGINAL SURVEY  
 DATE: 5/1/57  
 BY: W.H.F.F.  
 L.L.O.S.  
 W.F.W.

ORIGINAL SURVEY  
 DATE: 5/1/57  
 BY: W.H.F.F.  
 L.L.O.S.  
 W.F.W.



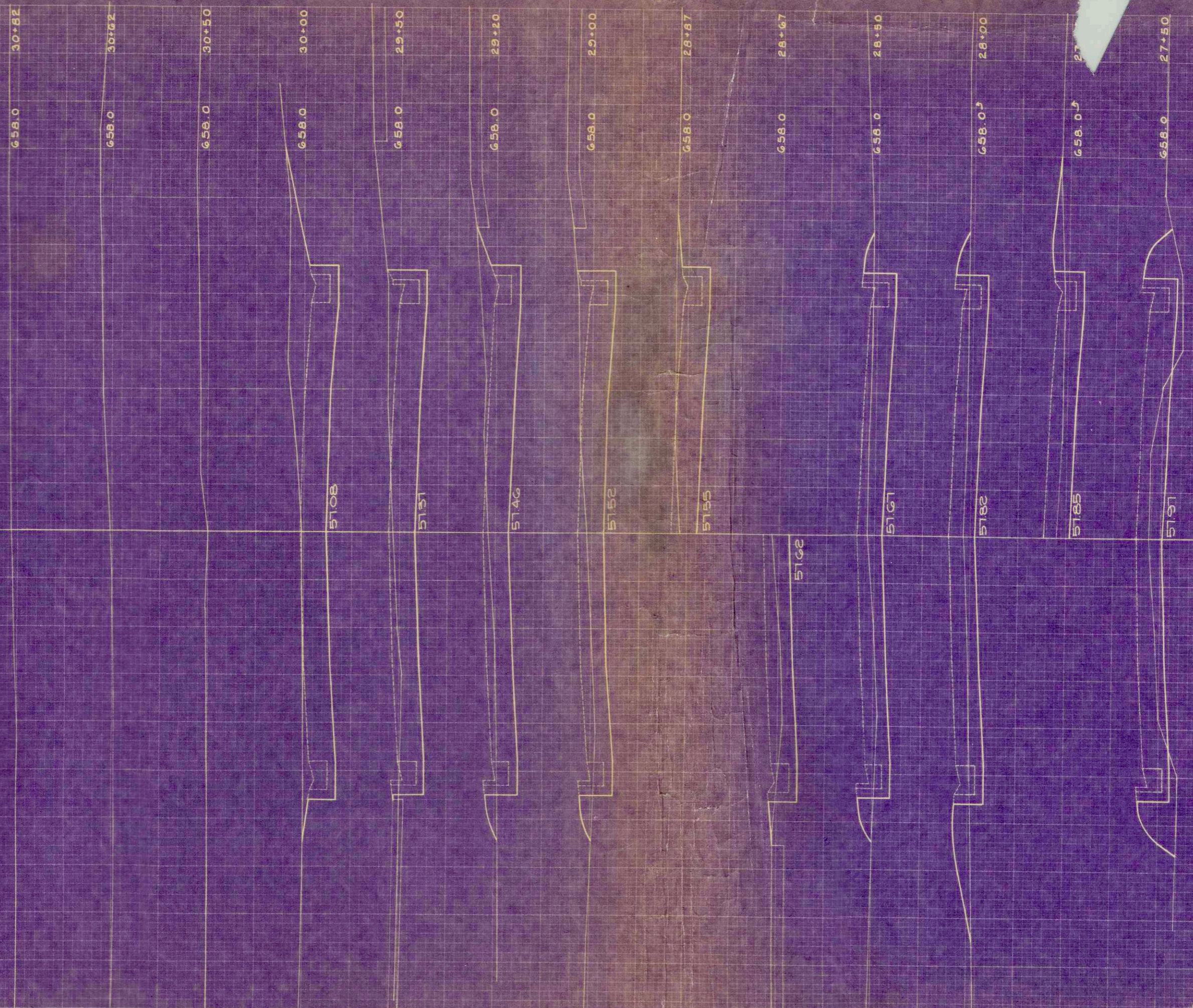
1" = 5' HOR.  
 1" = 2' VERT.

R.P.R. DISTRICT OFFICE		PROJECT	SHEET NUMBER	TOTAL SHEETS
WIS. 4		U08-350	30	31
STATION	DISTANCE	YARDAGE		
		EXCAVATION	FILL	
27+00	0			
+10	52		0	
+08	41		0	
24	10		0	
+18	52		0	
+50	94		2	
+51	20		2	
25	87		41	
+50	68		87	
+56	9		11	
25				
+11				
+06	37		24	
26				
+09	57		20	
+50				
25	52		33	
27	35		30	
+50				
<b>SHEET TOTAL</b>	<b>619</b>		<b>250</b>	

2015

2015

C.T.H. FF" Losey Blvd.



1" = 5' HOR  
1" = 2' VERT.

R.P.A. DISTRICT OFFICE		PROJECT	SHEET NUMBER	TOTAL SHEETS
WIS.		U08-3(30)	31	31

STATION	YARDAGE		
	EXCAVATION		FILL
	UNCL		
27+50			
28+00	AG		22
28+50	61		7
29+00	81		4
29+50	39		2
30+00	63		6
30+50	128		2
31+00	22		0
<b>SHEET TOTAL</b>	<b>440</b>		<b>39</b>