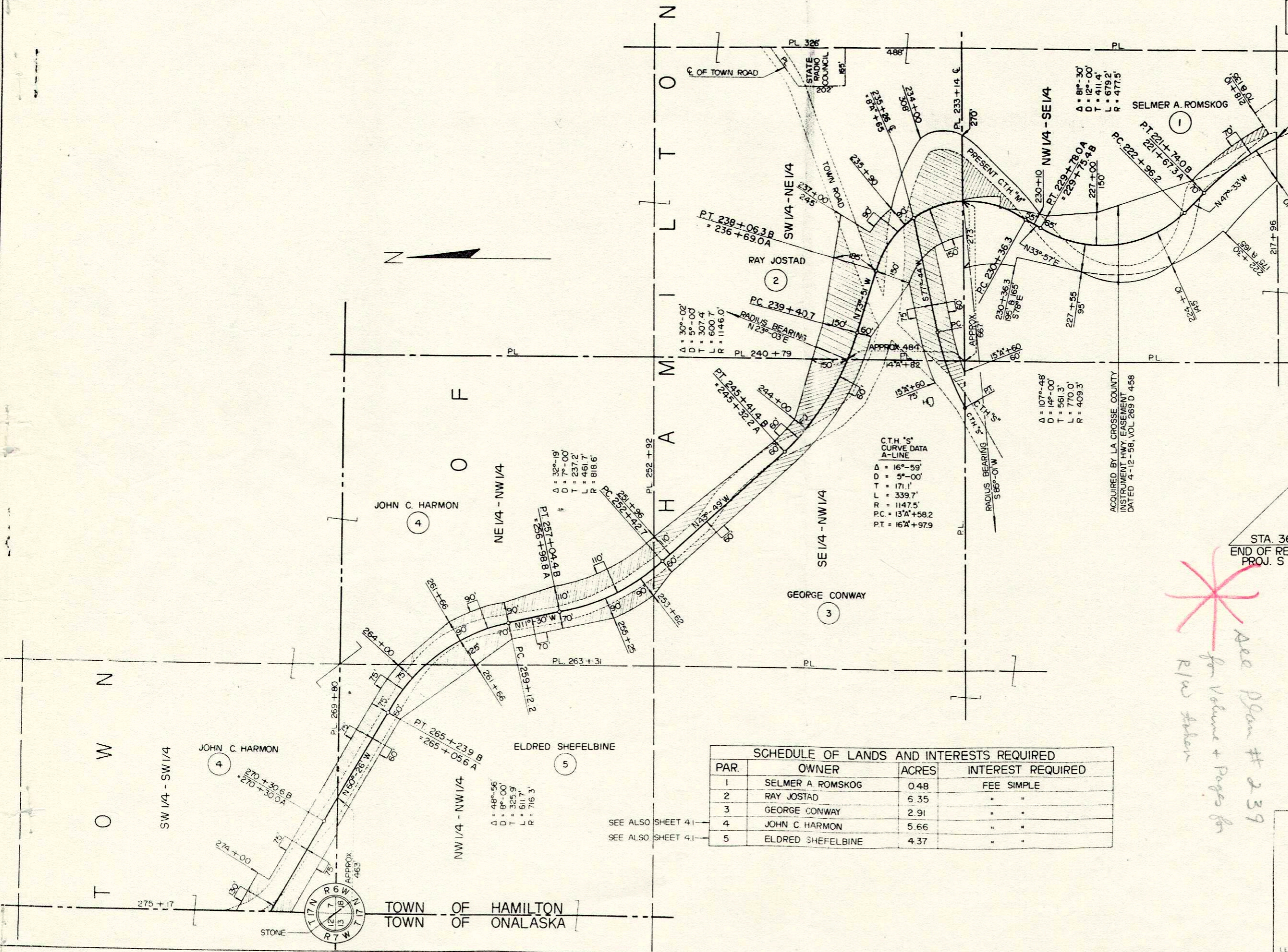


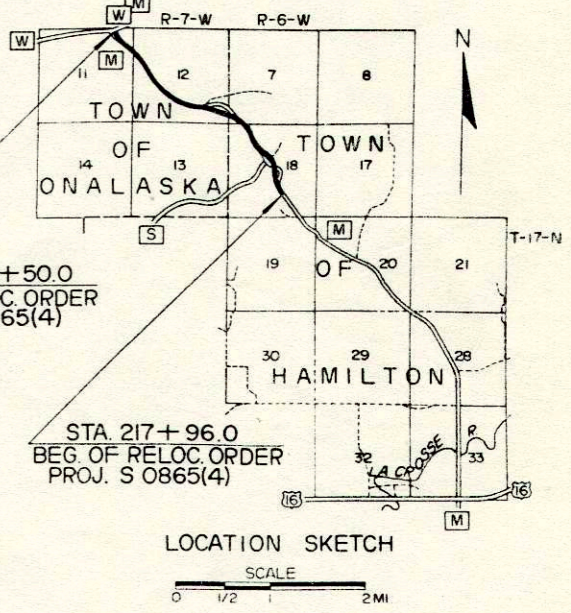
COUNTY AND HIGHWAY	ROUTE AND SECTION	CLASS AND AGREEMENT		FEDERAL DIVISION OFFICE	SHEET NUMBER	TOTAL SHEETS
		STATE	FEDERAL			
32.6	865.0		11.4	4	4.0	66



STA. 217+96.0
 BEG. OF RELOC. ORDER
 PROJ. S 0865(4)
 (LOCATED 1320 FEET SOUTH AND 950 FEET EAST OF
 THE CENTER OF SEC. 18 - T 17 N - R 6 W)

C.T.H. 'S'
 CURVE DATA
 A-LINE
 Δ = 16°-59'
 D = 5°-00'
 T = 171.1'
 L = 339.7'
 R = 1147.5'
 P.C. = 13'A+58.2
 P.T. = 16'A+97.9

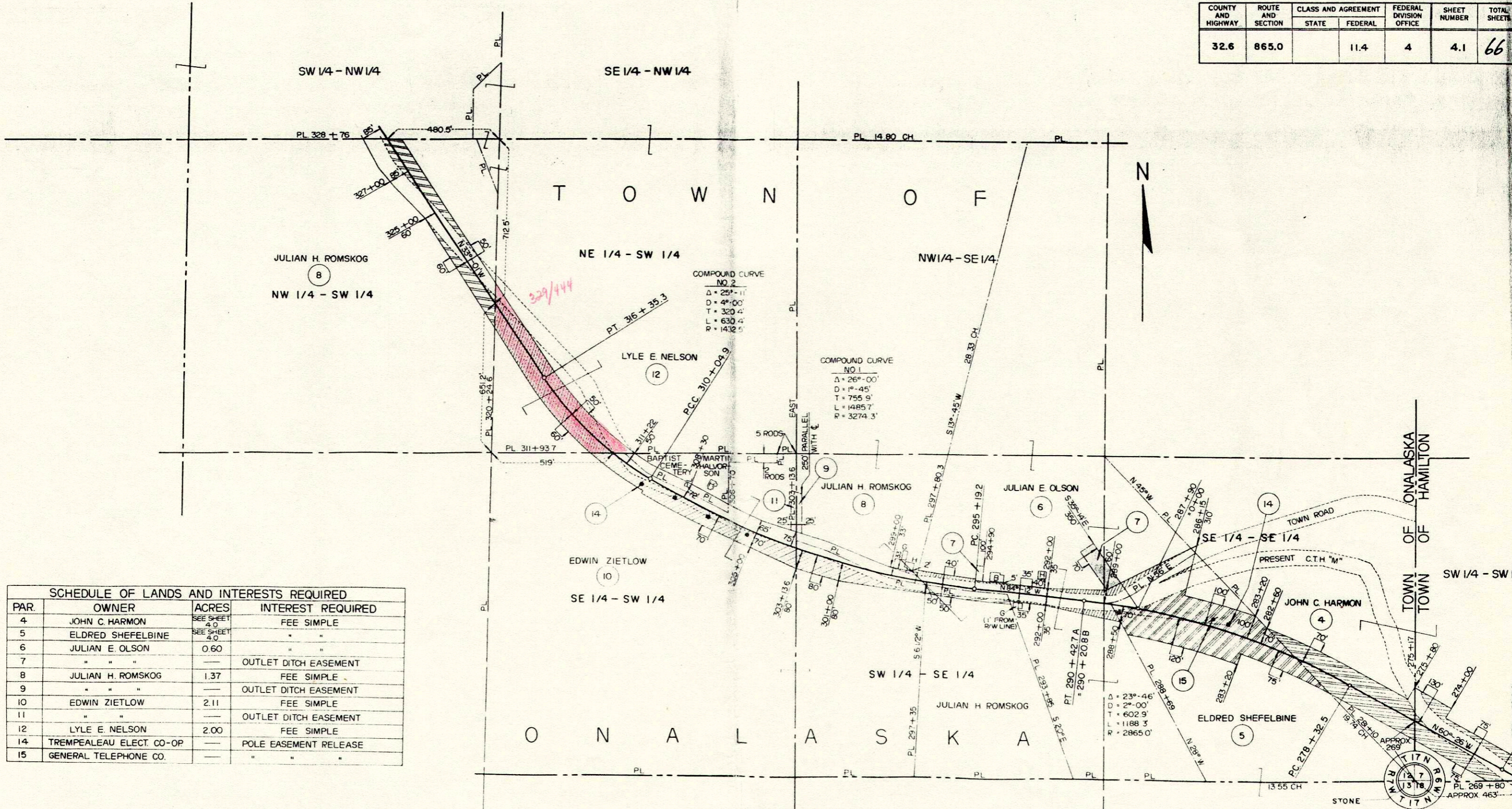
PAR.	OWNER	ACRES	INTEREST REQUIRED
1	SELMER A ROMSKOG	0.48	FEE SIMPLE
2	RAY JOSTAD	6.35	" "
3	GEORGE CONWAY	2.91	" "
4	JOHN C. HARMON	5.66	" "
5	ELDRD SHEFELBINE	4.37	" "



See Plan # 239 for Volume + Pages for R/W Station

STATE HIGHWAY COMMISSION OF WISCONSIN
 PLAT OF RIGHT OF WAY REQUIRED
 PROJECT S 0865(4)
 U.S.H. 16 - C.T.H. "W" ROAD
 C.T.H. "M" LA CROSSE COUNTY
 SCALE 0 100 200 400 FEET
 LENGTH = 2.729 MILES
 OCTOBER 26, 1966

COUNTY AND HIGHWAY	ROUTE AND SECTION	CLASS AND AGREEMENT		FEDERAL DIVISION OFFICE	SHEET NUMBER	TOTAL SHEETS
		STATE	FEDERAL			
32.6	865.0		11.4	4	4.1	66



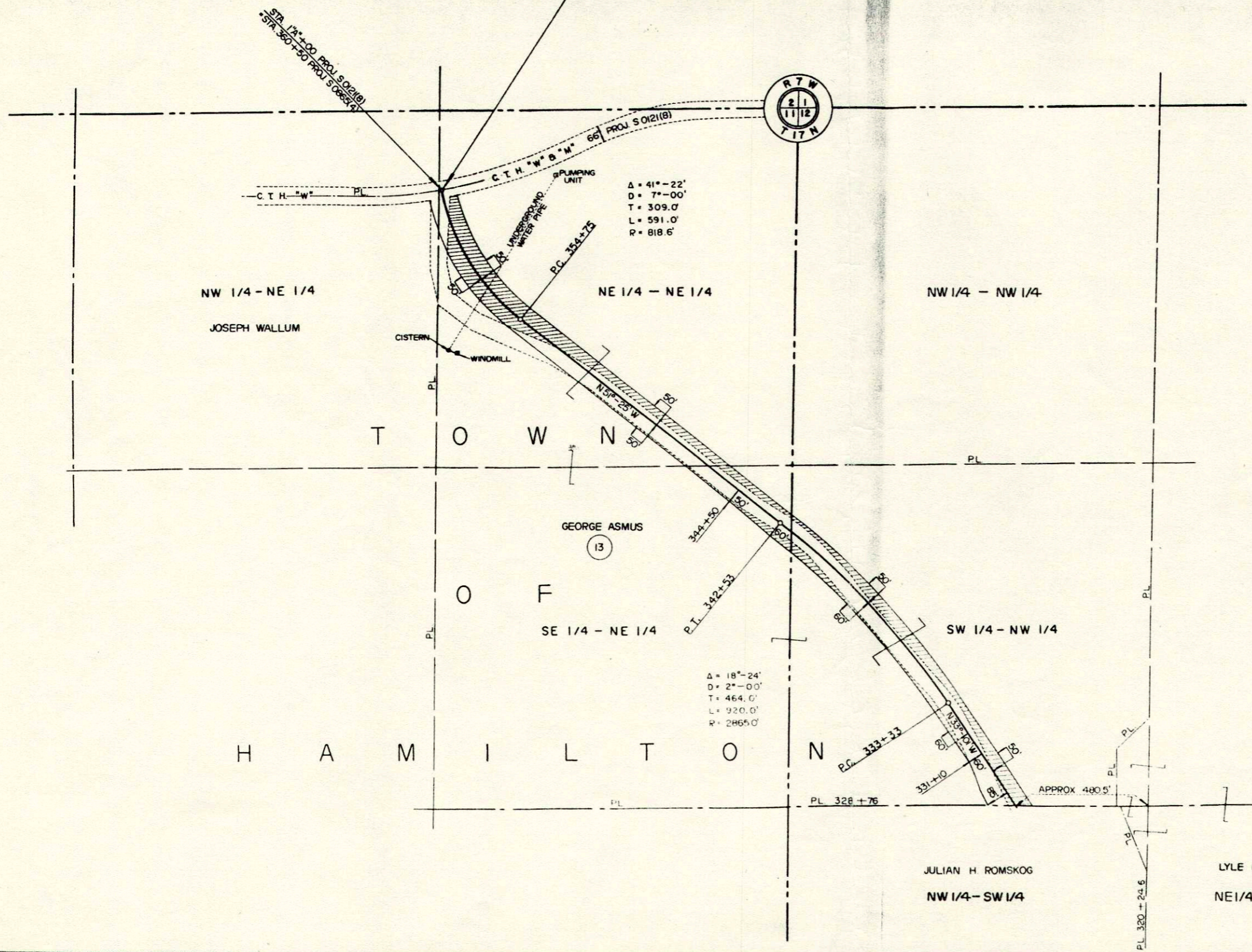
SCHEDULE OF LANDS AND INTERESTS REQUIRED			
PAR.	OWNER	ACRES	INTEREST REQUIRED
4	JOHN C. HARMON	SEE SHEET 4.0	FEE SIMPLE
5	ELDRED SHEFELBINE	SEE SHEET 4.0	" "
6	JULIAN E. OLSON	0.60	" "
7	" "	"	OUTLET DITCH EASEMENT
8	JULIAN H. ROMSKOG	1.37	FEE SIMPLE
9	" "	"	OUTLET DITCH EASEMENT
10	EDWIN ZIETLOW	2.11	FEE SIMPLE
11	" "	"	OUTLET DITCH EASEMENT
12	LYLE E. NELSON	2.00	FEE SIMPLE
14	TREMPEALEAU ELECT. CO-OP	"	POLE EASEMENT RELEASE
15	GENERAL TELEPHONE CO.	"	" " "

STATE HIGHWAY COMMISSION OF WISCONSIN
 PLAT OF RIGHT OF WAY REQUIRED
PROJECT S 0865(4)
 U.S.H. 16 - C.T.H. "W" ROAD
 C.T.H. "M" LA CROSSE COUNTY

SCALE
 0 100 200 400 FEET
 LENGTH = 2.729 MILES
 DATED OCTOBER 26, 19

COUNTY AND HIGHWAY	ROUTE AND SECTION	CLASS AND AGREEMENT		FEDERAL DIVISION OFFICE	SHEET NUMBER	TOTAL SHEETS
		STATE	FEDERAL			
32.6	865.0		11.4	4	4.2	66

STA. 360+50
 END OF RELOC. ORDER
 PROJ. S 0865(4)
 (LOCATED 300 FEET SOUTH AND 1320 FEET WEST
 OF THE NORTHEAST CORNER OF SEC. 11-T17N-R7W)



SCHEDULE OF LANDS AND INTERESTS REQUIRED			
PAR	OWNER	ACRE	INTEREST REQUIRED
13	GEORGE ASMUS	3.61	FEE SIMPLE

STATE HIGHWAY COMMISSION OF WISCONSIN
 PLAT OF RIGHT OF WAY REQUIRED
 PROJECT S 0865(4)
 U.S.H. 16 — C.T.H. "W" ROAD
 C.T.H. "M" LA CROSSE COUNTY

SCALE
 0 100 200 400 FEET
 LENGTH - 2.729 MILES
 DATED OCTOBER 26, 1966

NW 1/4 - NE 1/4
 JOSEPH WALLUM

NE 1/4 - NE 1/4

NW 1/4 - NW 1/4

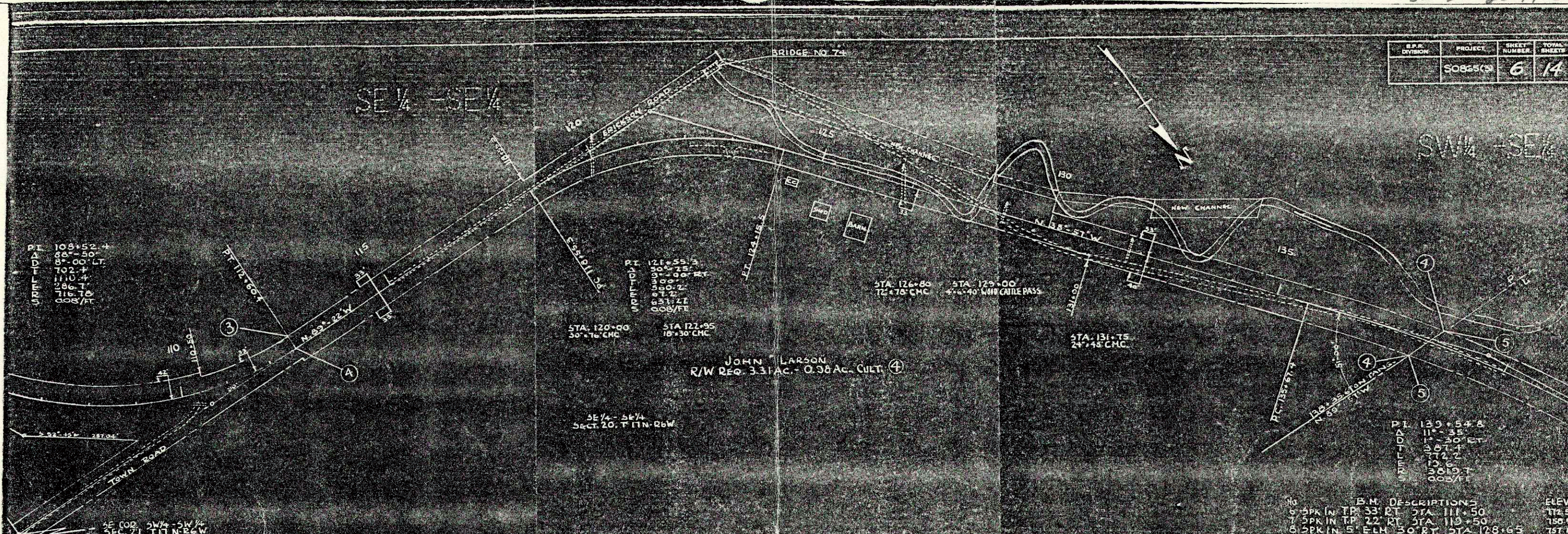
GEORGE ASMUS
 (13)
 SE 1/4 - NE 1/4

SW 1/4 - NW 1/4

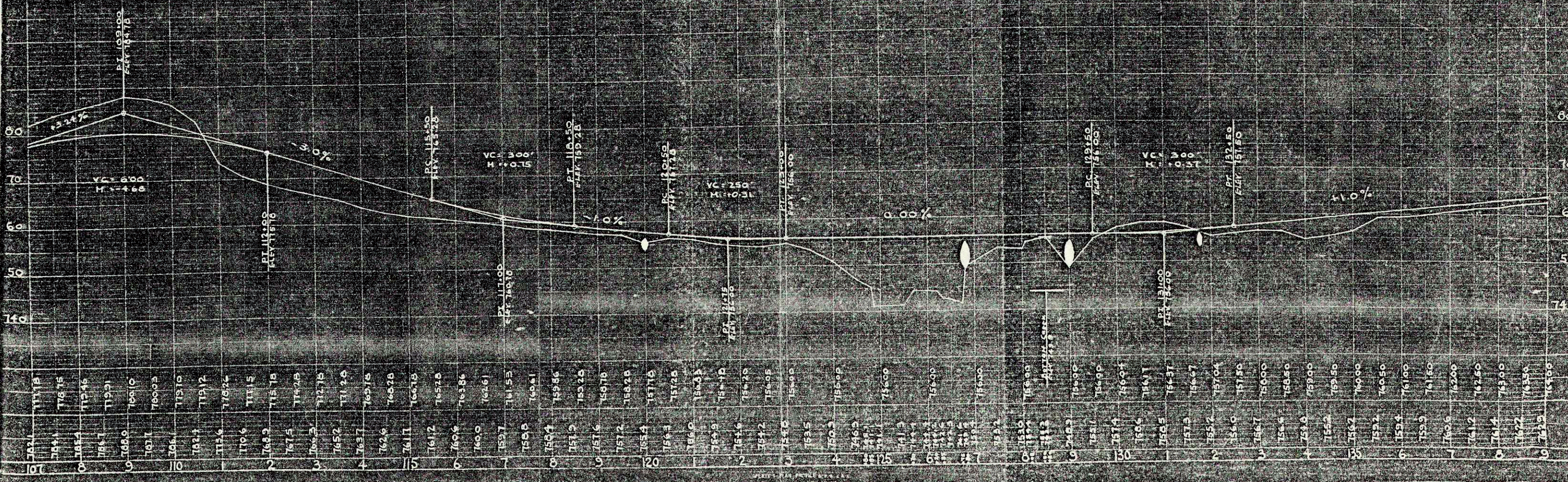
JULIAN H ROMSKOG
 NW 1/4 - SW 1/4

LYLE E NELSON
 NE 1/4 - SW 1/4

S.P.R. DIVISION	PROJECT	SHEET NUMBER	TOTAL SHEETS
	S0865(3)	6	14



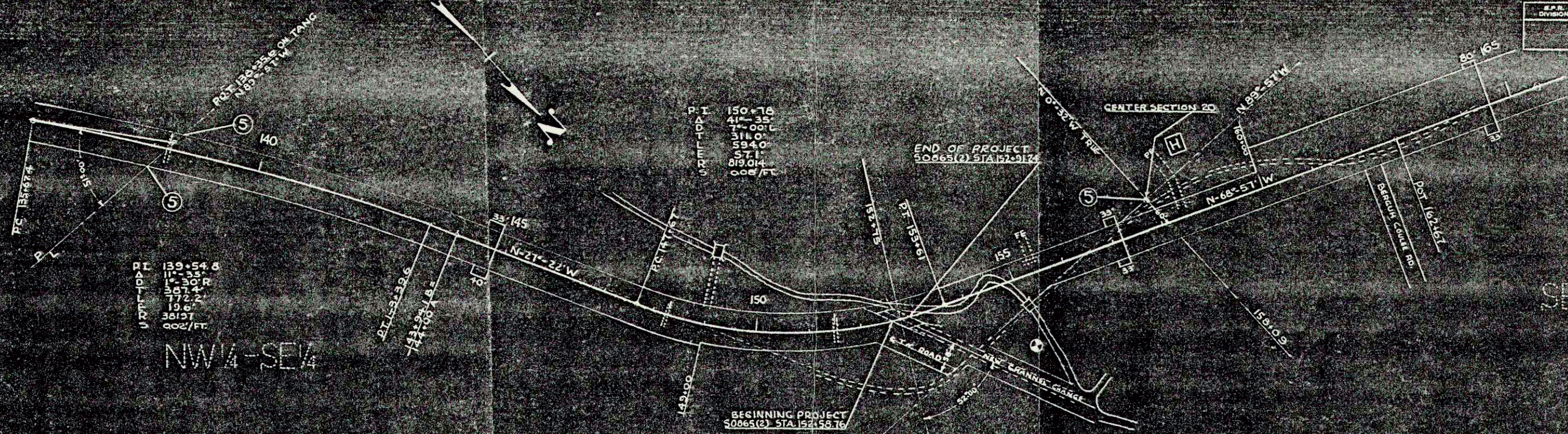
NET LENGTH OF CENTERLINE STA 108+00 TO 138+00 = 3000.6 LIN. FT.



B.M. DESCRIPTIONS

DESCRIPTION	ELEV.
4' SPR IN TP 33 RT STA 111+50	74.56
4' SPR IN TP 22 RT STA 119+50	75.90
4' SPR IN S. ELM 50 RT STA 128+65	75.70
4' SPR IN RR (3404 6635) 50' LT STA 136+90	75.99

D.P. DIVISION	PROJECT	SHEET NUMBER	TOTAL SHEETS
	S0865(3)	7	14



P.T. 139+54.8
11.7
11.0
10.3
9.6
8.9
381.37
0.02/FT

P.T. 150+78
41-35
7-00 L
314.0
594.0
5.1
810.04
0.02/FT

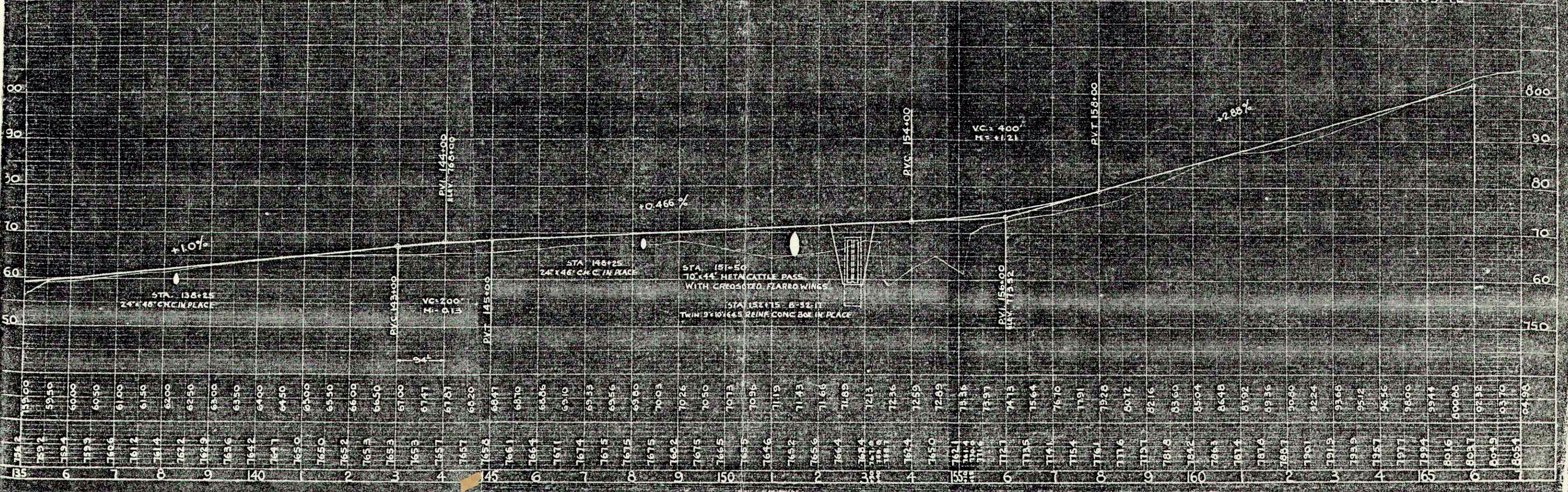
NW 1/4-SE 1/4

SE 1/4-NW 1/4

C. B. HULBERG
R/W REQ. 2.05 AC

NET LENGTH OF CENTERLINE STA. 135+00 TO 165+00 = 2661.6 LIN. FT.

B.M. IN P.P. ELEV. 769.42



STA. 148+25
24'x48' CONC IN PLACE

STA. 151+50
10'x44' METAL CATTLE PASS
WITH CREOSOTED FLARROWINGS

STA. 152+15 B-32 IT
TWIN 9'x10'6.5 REINF CONC BOX IN PLACE

PVI 144+00
ELEV. 763.00

VC=200
PVI 144+00

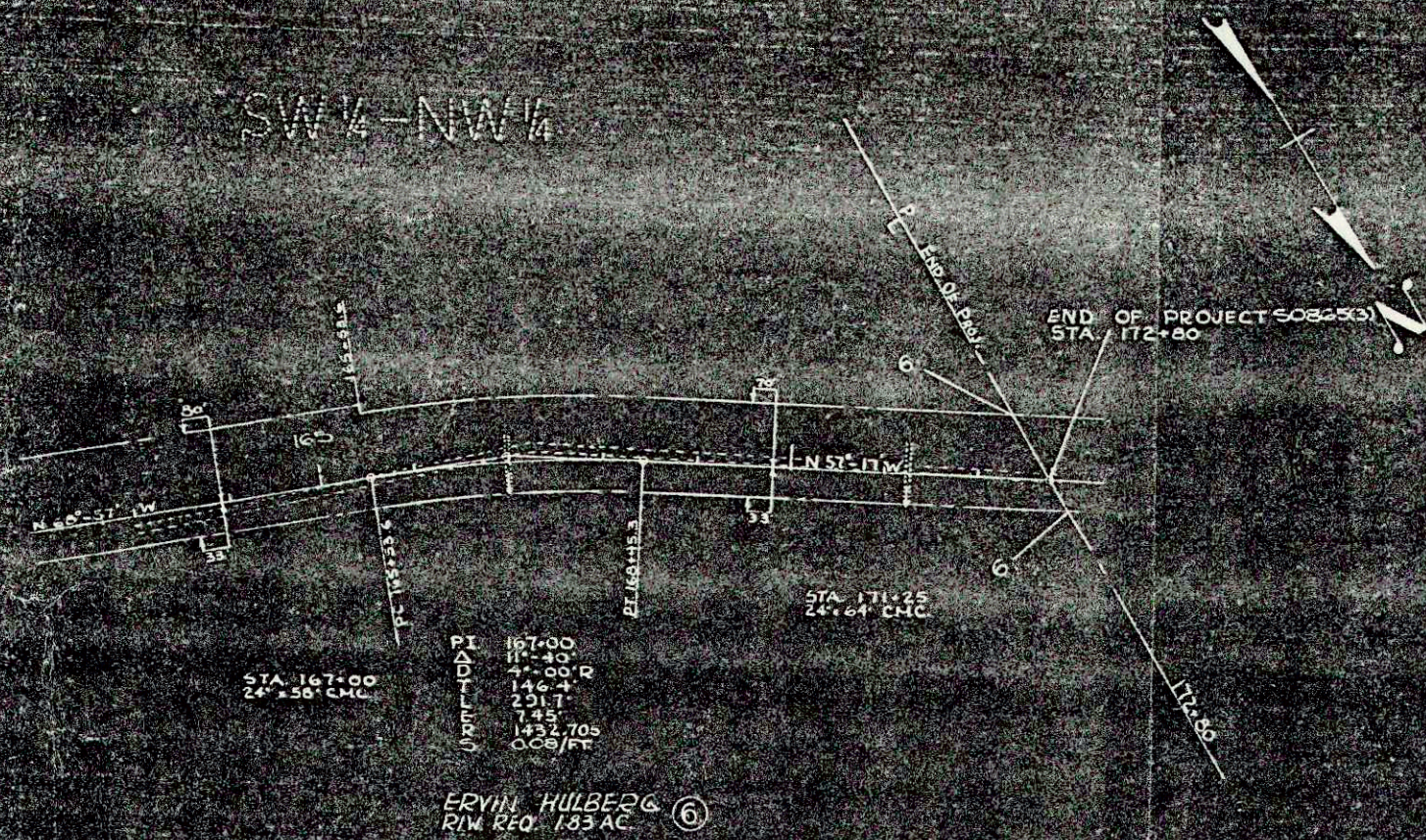
VC=400
PVI 156+00

PVI 156+00
ELEV. 775.52

PVI 158+00

SW-NW 20-17-6

SW 1/4 - NW 1/4

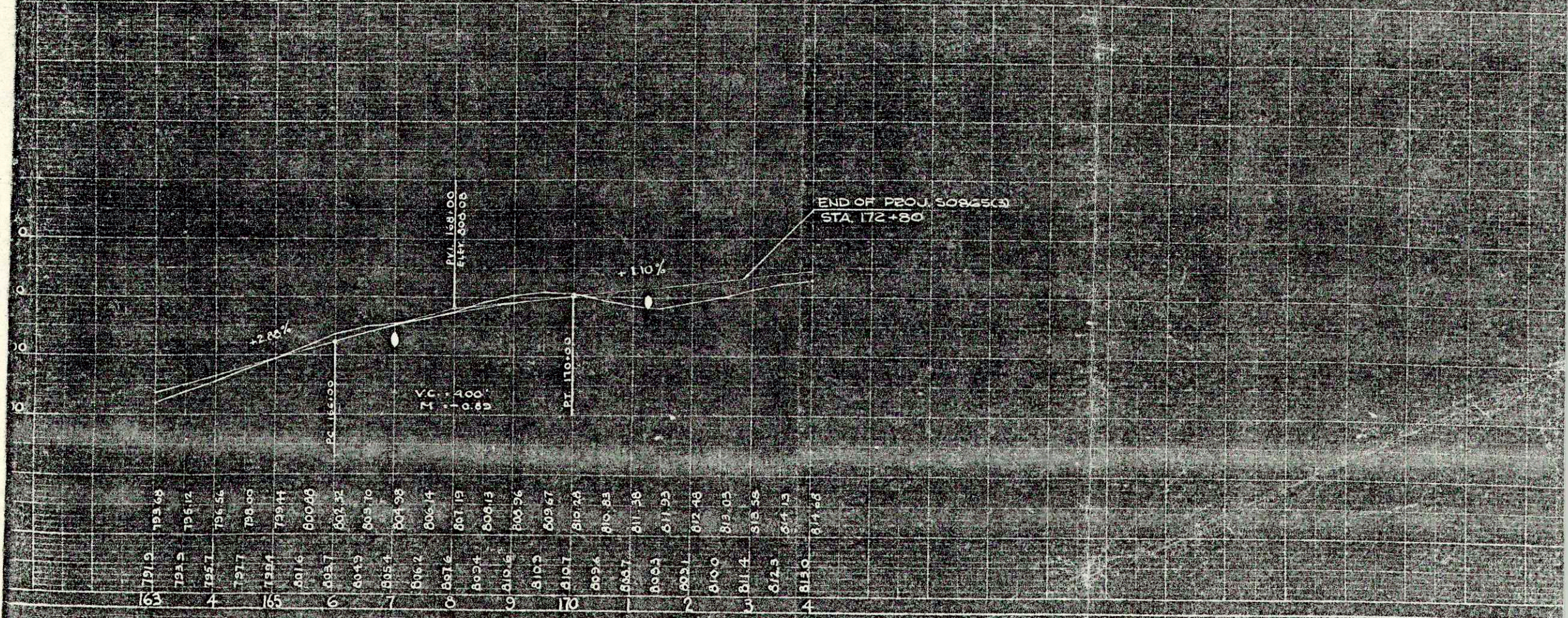


PI 167+00
11'-40"
7'-00" R
146'-4"
231.7
7.35
1432.705
0.09/FT

PI 171+25
24'-64" CMC

ERVIN HULBERG & (6)
RIM REQ. 183 AC.

NET LENGTH OF CENTERLINE STA 165+00 TO 172+80 = 780 LIN. FT.



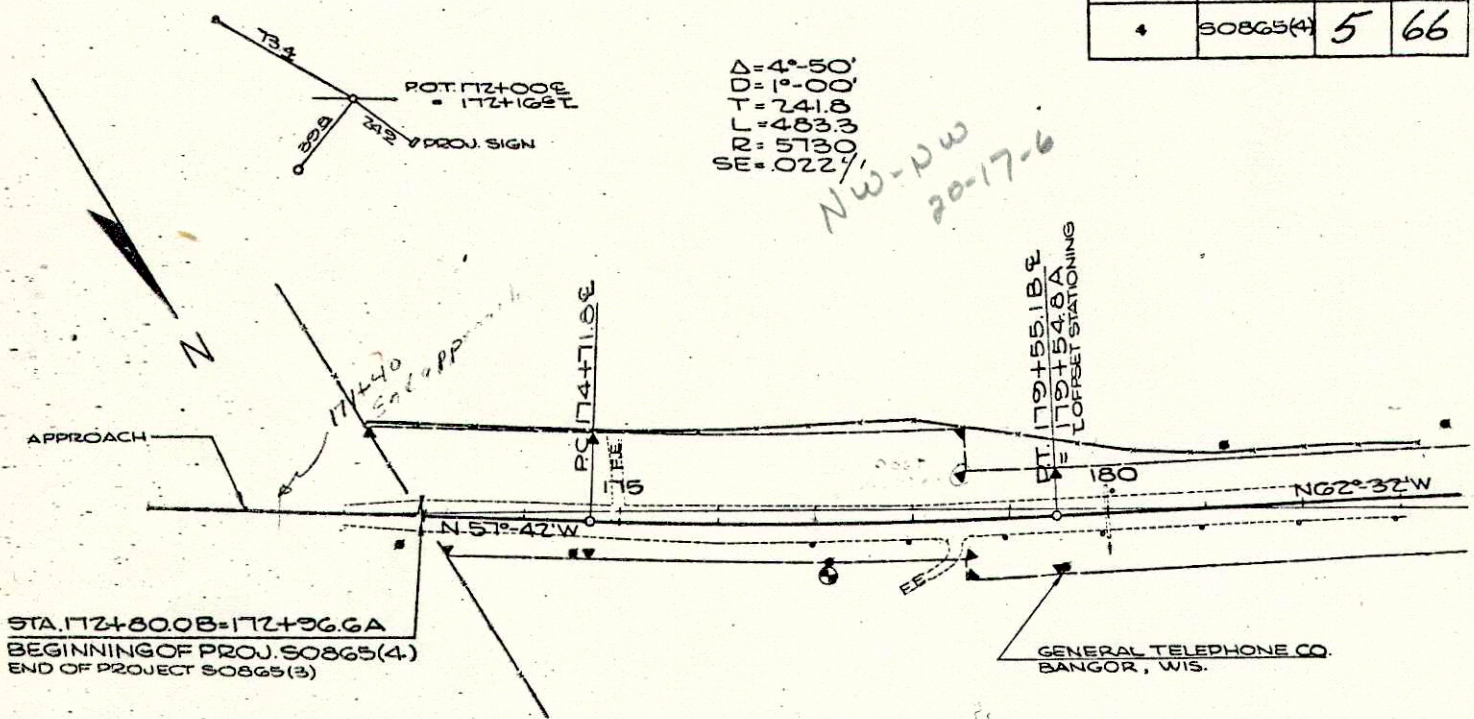
END OF PROJ. 308253
STA 172+80

163	164	165	166	167	168	169	170	171	172	173	174	175	176	177	178	179	180	181	182	183	184	185	186	187	188	189	190	191	192	193	194	195	196	197	198	199	200																																																																																																																											
791.9	793.2	794.5	795.8	797.1	798.4	799.7	801.0	802.3	803.6	804.9	806.2	807.5	808.8	810.1	811.4	812.7	814.0	815.3	816.6	817.9	819.2	820.5	821.8	823.1	824.4	825.7	827.0	828.3	829.6	830.9	832.2	833.5	834.8	836.1	837.4	838.7	840.0	841.3	842.6	843.9	845.2	846.5	847.8	849.1	850.4	851.7	853.0	854.3	855.6	856.9	858.2	859.5	860.8	862.1	863.4	864.7	866.0	867.3	868.6	869.9	871.2	872.5	873.8	875.1	876.4	877.7	879.0	880.3	881.6	882.9	884.2	885.5	886.8	888.1	889.4	890.7	892.0	893.3	894.6	895.9	897.2	898.5	899.8	901.1	902.4	903.7	905.0	906.3	907.6	908.9	910.2	911.5	912.8	914.1	915.4	916.7	918.0	919.3	920.6	921.9	923.2	924.5	925.8	927.1	928.4	929.7	931.0	932.3	933.6	934.9	936.2	937.5	938.8	940.1	941.4	942.7	944.0	945.3	946.6	947.9	949.2	950.5	951.8	953.1	954.4	955.7	957.0	958.3	959.6	960.9	962.2	963.5	964.8	966.1	967.4	968.7	970.0	971.3	972.6	973.9	975.2	976.5	977.8	979.1	980.4	981.7	983.0	984.3	985.6	986.9	988.2	989.5	990.8	992.1	993.4	994.7	996.0	997.3	998.6	1000.0

S.P.R. DIVISION	PROJECT	SHEET NUMBER	TOTAL SHEETS
4	SO865(4)	5	66

$\Delta = 4^{\circ}50'$
 $D = 1^{\circ}00'$
 $T = 241.8$
 $L = 483.3$
 $RR = 5730$
 $SE = .022\%$

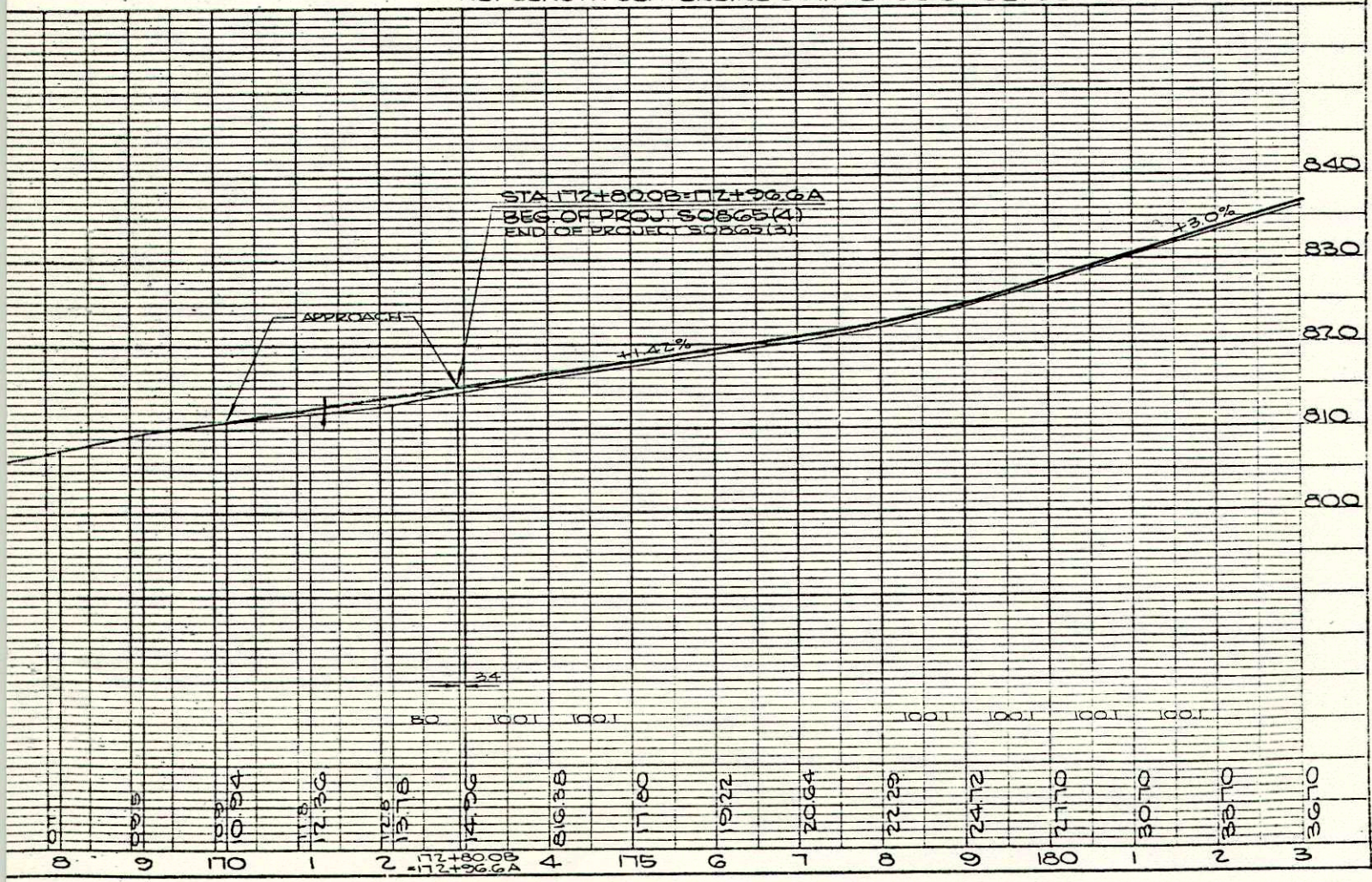
NW-DW
20-17-6



STA. 172+80.08 = 172+96.6A
 BEGINNING OF PROJ. SO865(4)
 END OF PROJECT SO865(3)

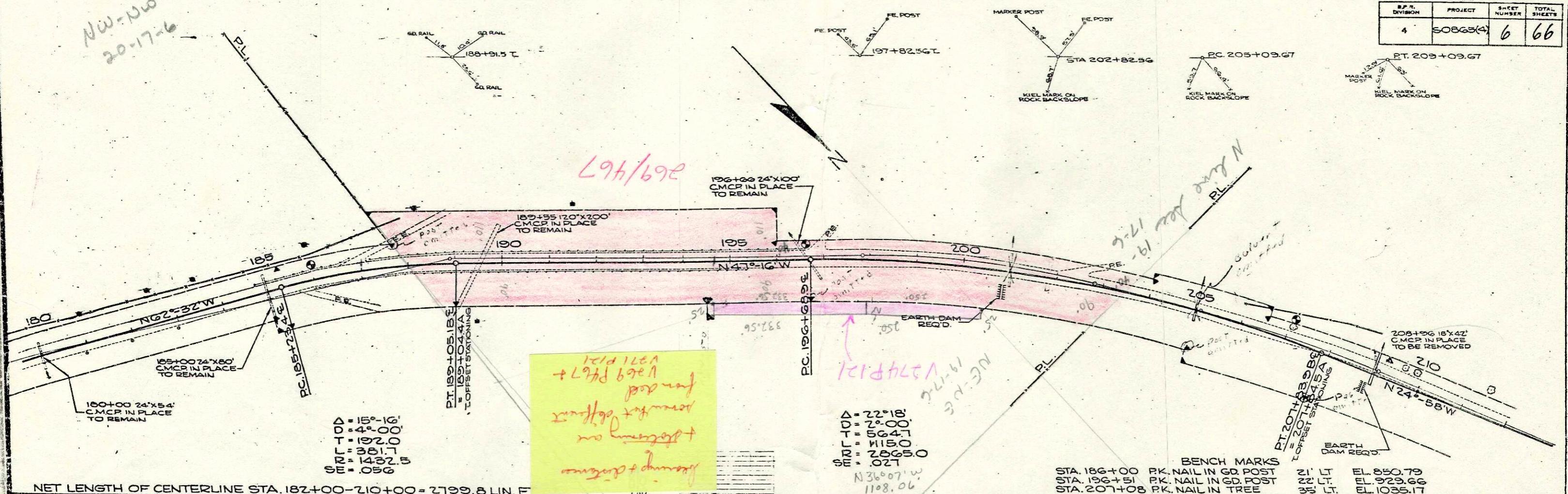
BENCH MARKS
 STA. 177+07 SPK. IN TEL. POLE RT. 37' EL. 814.99

NET LENGTH CENTERLINE STA. 172+96.6-182+00 = 904.0 LIN. FT.



N1°2'27.76"W

S.P. DIVISION	PROJECT	SHEET NUMBER	TOTAL SHEETS
4	S0865(4)	6	66

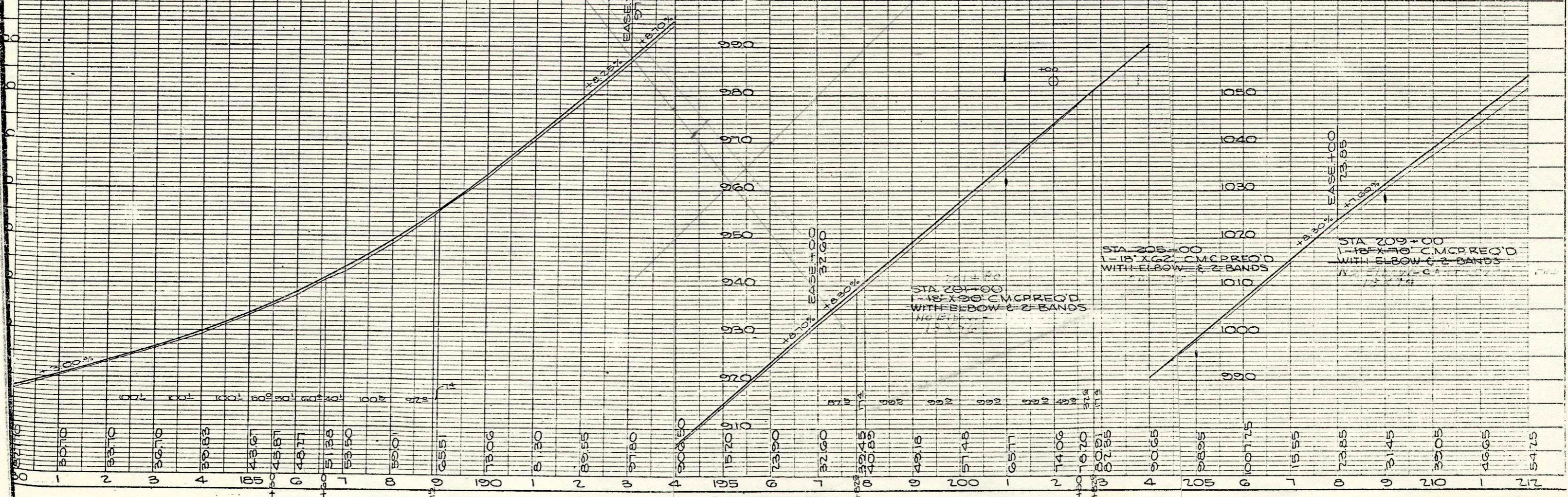


NET LENGTH OF CENTERLINE STA. 182+00-210+00 = 2799.8 LIN. F

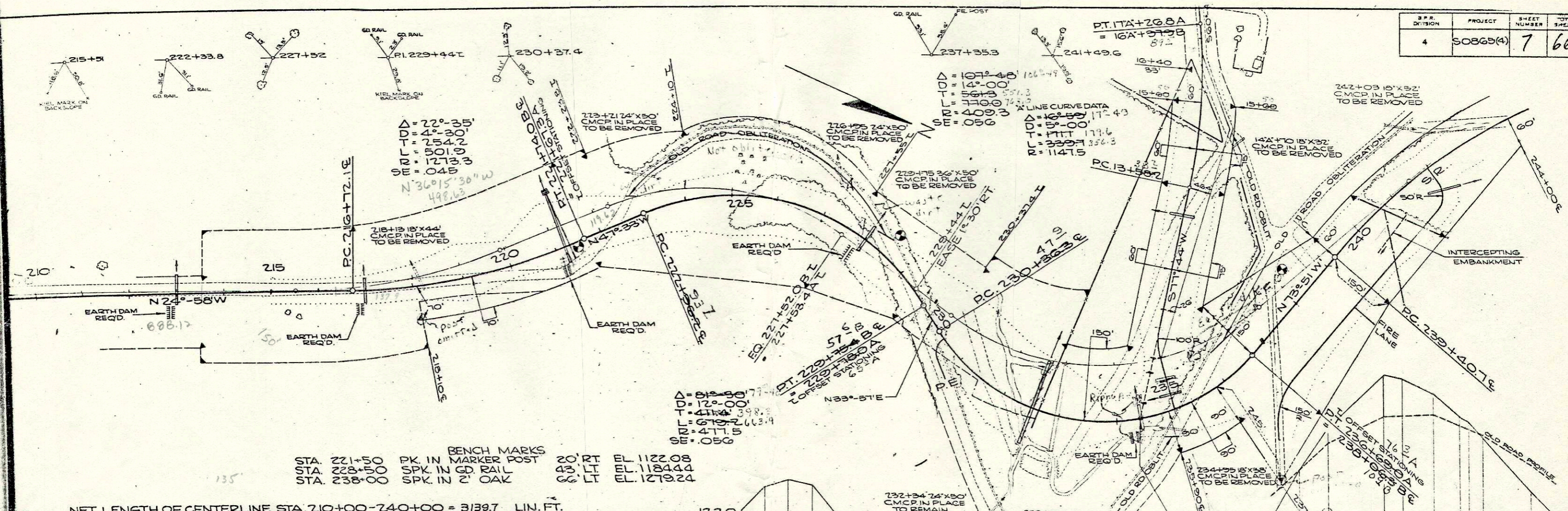
Δ = 15°-16'
 D = 4°-00'
 T = 192.0'
 L = 381.7'
 SR = 1432.5'
 SE = 082.6'

Δ = 22°-18'
 D = 2°-00'
 T = 564.7'
 L = 1150'
 SR = 2865.0'
 SE = 027'
 N 36°07'W
 1108.06'

BENCH MARKS
 STA. 186+00 R.K. NAIL IN GD. POST 21' LT. EL. 850.79
 STA. 196+51 R.K. NAIL IN GD. POST 22' LT. EL. 929.66
 STA. 207+08 R.K. NAIL IN TREE 38' LT. EL. 1035.17



S.P.R. DIVISION	PROJECT	SHEET NUMBER	TOTAL SHEETS
4	S0865(4)	7	66



STA. 221+50 PK IN MARKER POST 20' RT EL. 1122.08
 STA. 228+50 SPK IN GD RAIL 43' LT EL. 1184.44
 STA. 238+00 SPK IN 2' OAK 66' LT EL. 1279.24

NET LENGTH OF CENTERLINE STA. 210+00-240+00 = 3139.7 LIN. FT.

