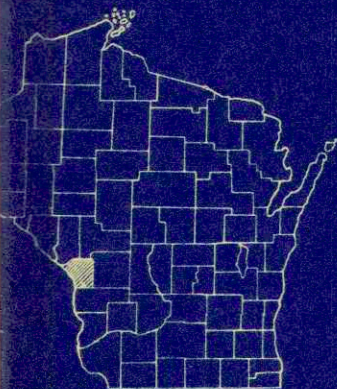


C.T.H. "K" Shelby Office Copy

INDEX OF SHEETS

SHEET NO. 1	TITLE
SHEET NO. 2	TYPICAL CROSS SECTIONS
SHEET NO. 2	ESTIMATE OF QUANTITIES
SHEET NO. 2	MISCELLANEOUS QUANTITIES
SHEET NO. —	RIGHT OF WAY PLAT
SHEET NO. 3 & 4	PLAN AND PROFILE STA. 1+00 TO STA. 40+65
SHEET NO. —	STANDARD DETAILS
SHEET NO. —	DRAINAGE STRUCTURES
SHEET NO. —	CROSS SECTIONS



STATE OF WISCONSIN
STATE HIGHWAY COMMISSION OF WISCONSIN

PLAN AND PROFILE OF PROPOSED
S.T.H. 35 — SOUTH COUNTY LINE
LACROSSE COUNTY
PROJECT S 0612 (I)

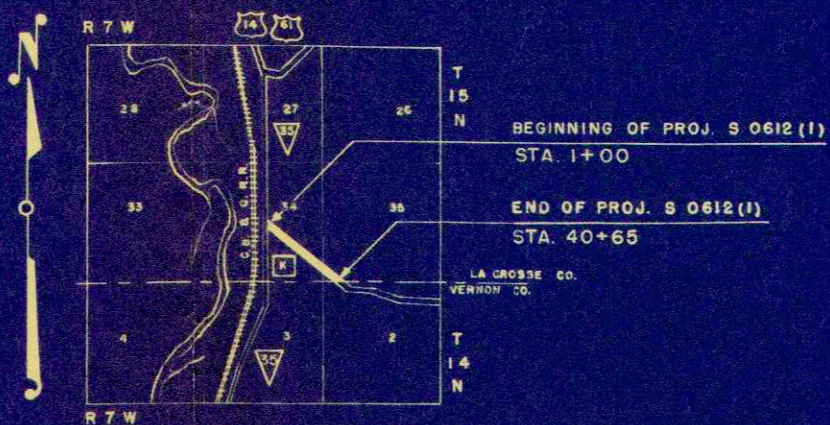
BEGINNING AT A POINT APPROXIMATELY 1200 FEET SOUTH OF THE
NORTH CORNER OF SECTION 34, T15 N, R7 W, AND EXTENDING SOUTHEAST
TO A POINT APPROX. 1110 FT. EAST OF THE S.E. COR. SEC. 34; T15 N,

SCALES | PLAN 1 IN. = 100 FT.
| PROFILE HOR. 1 IN. = 100 FT. VERT. 1 IN. = 10 FT.

★ Caution !!

See Plan # 231H
(large plan) in the
Shelby drawer
for changes,
etc.

COUNTY	FEDERAL DIVISION OFFICE	SHEET NUMBER	TOTAL SHEETS
LACROSSE		4	4



LAYOUT
SCALE 1 MILE
TOTAL NET LENGTH OF CENTERLINE = 0.751 MI

CONVENTIONAL SIGNS

PROPERTY LINE	-----	CULVERTS IN PLACE	-----
SHIP OR RANGE LINE	-----	CULVERTS REQUIRED	-----
SECTION LINE	-----	DROP INLET	□
RIGHT OF WAY LINE	-----	POWER POLE	—○—
OUTRIGHT RIGHT OF WAY LINE	-----	TELEPHONE OR TELEGRAPH POLE	—○—
FENCE { WOVEN	-----	RIGHT OF WAY MARKERS	—○—
BARBED	-----	REFERENCE STAKE FOR HUBS ONLY	—○—
RAILROAD	-----	MARSH	—○—
RAILROAD OR CITY LIMITS	-----	HEDGE	—○—
PROPERTY LINE	-----	TREES	—○—
PAVED WAY OR P.E.	-----	GROUND ELEVATION	DATUM LINE 73.9
ROADS	-----	GRADE ELEVATION	DATUM LINE 75.16
OR SURVEY LINE	-----		



APPROVED FOR LACROSSE COUNTY
HIGHWAY COMMITTEE

Carl Brubaker Chairman
Henry J. Johnson
Date 3-1-55

STATE HIGHWAY COMMISSION OF WISCONSIN MADISON, WIS.	DEPARTMENT OF COMMERCE BUREAU OF PUBLIC ROADS
SURVEYOR F. N. D. COUNTY 165	RECOMMENDED FOR APPROVAL:
DISTRICT COMPUTER D. C. M. O. CHECKER	
DISTRICT CHECKER R. C. J. CORRECT	
CORRECT	
DATE 2-11-55 V.L. Fiedler DISTRICT ENGINEER	
RECOMMENDED FOR APPROVAL:	
DATE 2-15-55 J. S. Pitt ENGINEER OF DESIGN	
APPROVED:	
DATE 2/16/55 E.C. Bettgen STATE HIGHWAY ENGINEER	

ESTIMATE OF QUANTITIES

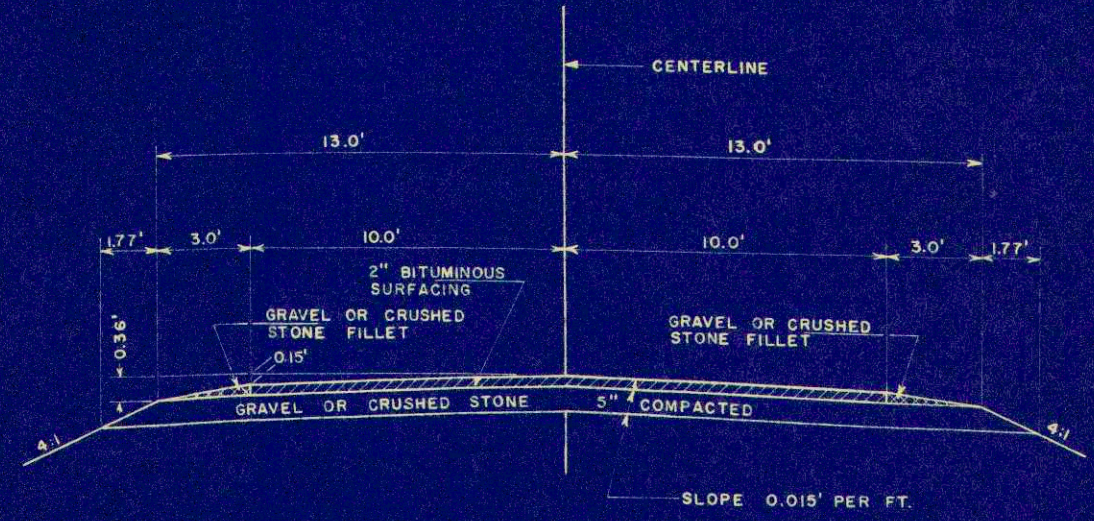
CONTRACT NO. 1

PROJECT	SHEET NUMBER	TOTAL SHEETS
S 0612 (1)	2	4

THIS PROJECT IS TO BE EXECUTED UNDER THE STANDARD SPECIFICATIONS FOR ROAD AND BRIDGE CONSTRUCTION OF THE STATE HIGHWAY COMMISSION OF WISCONSIN — EDITION OF 1951. APPROVED JANUARY 23, 1952; FEDERAL AID REQUIRED
 CONTRACT PROVISIONS APPROVED JANUARY 31, 1955, AND SPECIAL PROVISIONS AS ATTACHED TO PROPOSALS.

STATION TO STATION	NET LENGTH OF CENTER LINE	CLEARING	GRUBBING	EXCAVATION			SAND GRAVEL FILL	FINISHING ROADWAY	OBLITERATING OLD ROAD	GRAVEL OR CRUSHED STONE		CULVERT PIPE				RIP-RAP	GUARD FENCE		MARKER POSTS FOR R/W	MARKER POSTS FOR R/W	PREP. OF ROAD-BED FOR BIT. SURF.	BIT. MAT. FOR PRIME COAT	BIT. MAT. FOR SURF. CRSE.	SINGLE AGG. BIT. SURF. (MODIFIED)	TOPSOIL				FERTILIZER	SEEDING
				210 -	210 -	210 -				2110-1	2114-1	2116-1	2203-1	23	2512-1		2523	2523							2523-3	2523-4	2310-1	2311-1		
ITEM NO.	UNIT	2101-	2101-	210 -	210 -	210 -	2110-1	2114-1	2116-1	2203-1	23	2512-1	2523	2523	2523-3	2523-4	2310-1	2311-1	2314-1	2315-1	2528-1	2528-2	2531-1	2532-1						
	LIN. FT.			C.Y.	C.Y.	C.Y.	C.Y.	STA.	STA.	C.Y.	C.Y.	LIN. FT.	LIN. FT.	LIN. FT.	LIN. FT.	LIN. FT.	C.Y.	LIN. FT.	EACH	EACH	STA.	GAL.	TON	TON	SQ. YD.	SQ. YD.	CWT.	SQ. YD.		
1+00 - 40 + 65	3,965.0									2,500							40	2,950	66	1,036										
TOTAL	3,965.0									2,500							40	2,950	66	1,036										

STATION	LOC.	GRAVEL OR CRUSHED STONE BASE COURSE C.Y.	PREP. OF ROADBED FOR BITUMINOUS SURFACING STA.	BIT. MAT. FOR PRIME COAT GAL.	BIT. MAT. FOR SURFACE COURSE TON	SINGLE AGGREGATE BITUMINOUS SURFACE (MODIFIED) TON	GRAVEL OR CR. STONE BASE COURSE (FILLET) C.Y.
1+00 - 40 + 65	C.	2,210	40	2,910	65.0	1,022	150
S.R. 7 + 50	RT.	20		20	0.5	7	
S.R. 37 + 50	RT.	20		20	0.5	7	
PRIVATE ENTRANCES		100					
TOTAL		2,350	40	2,950	66.0	1,036	150

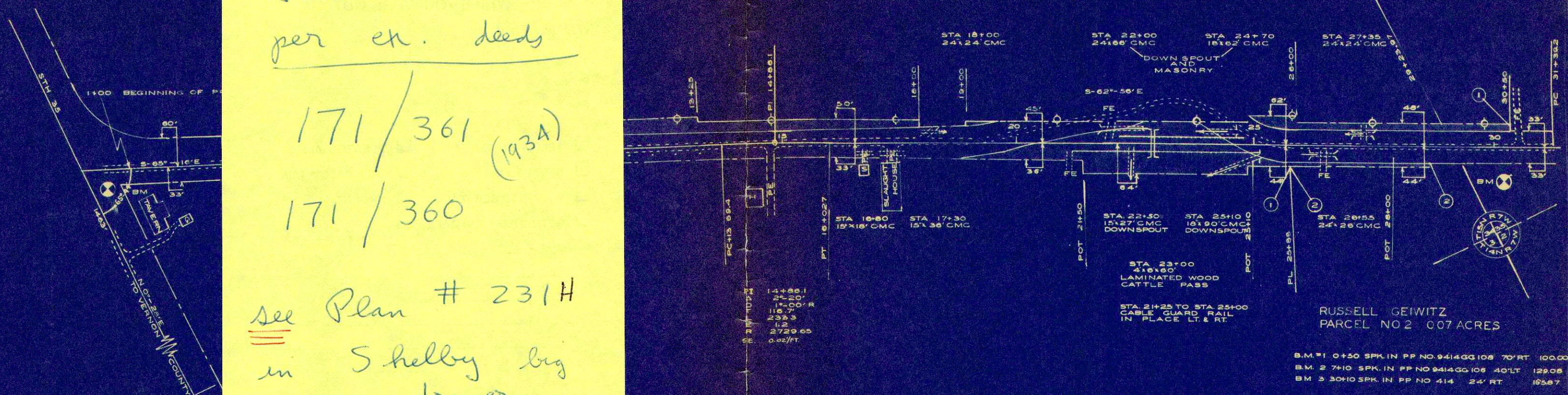


B.R. DIVISION	PROJECT	SHEET NUMBER	TOTAL SHEETS
5N	S 0612(1)	3	4

1/3/03
 Incorrect as
 per en. deeds

171 / 361 (193A)
 171 / 360

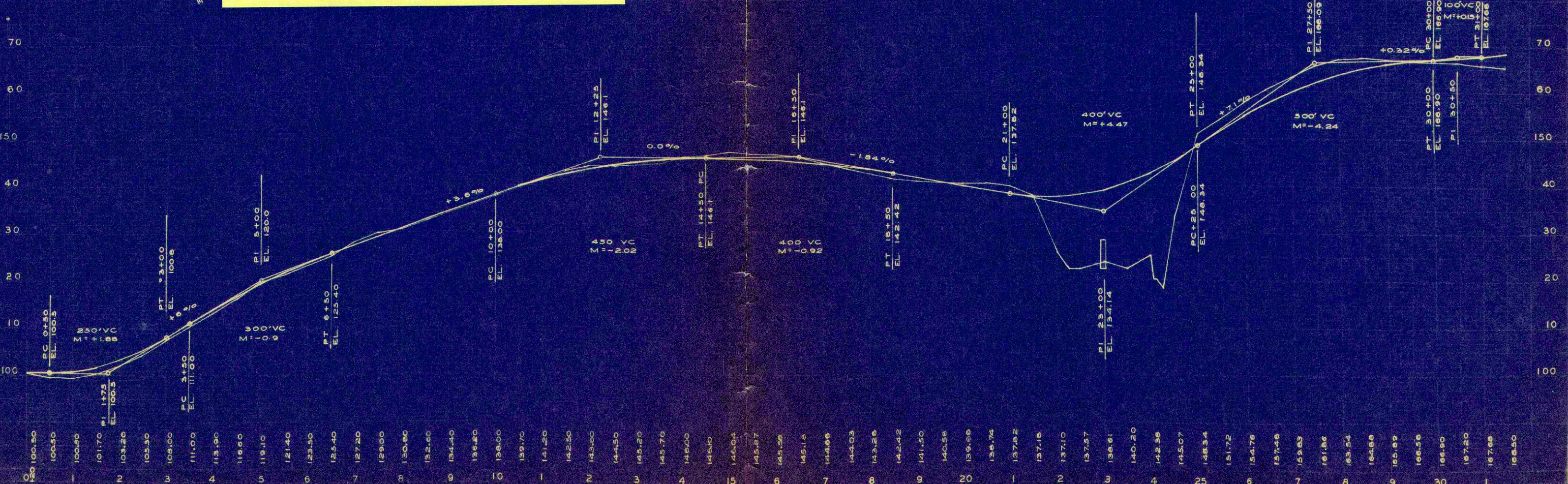
see Plan # 231H
 in Shelby big
 drawer



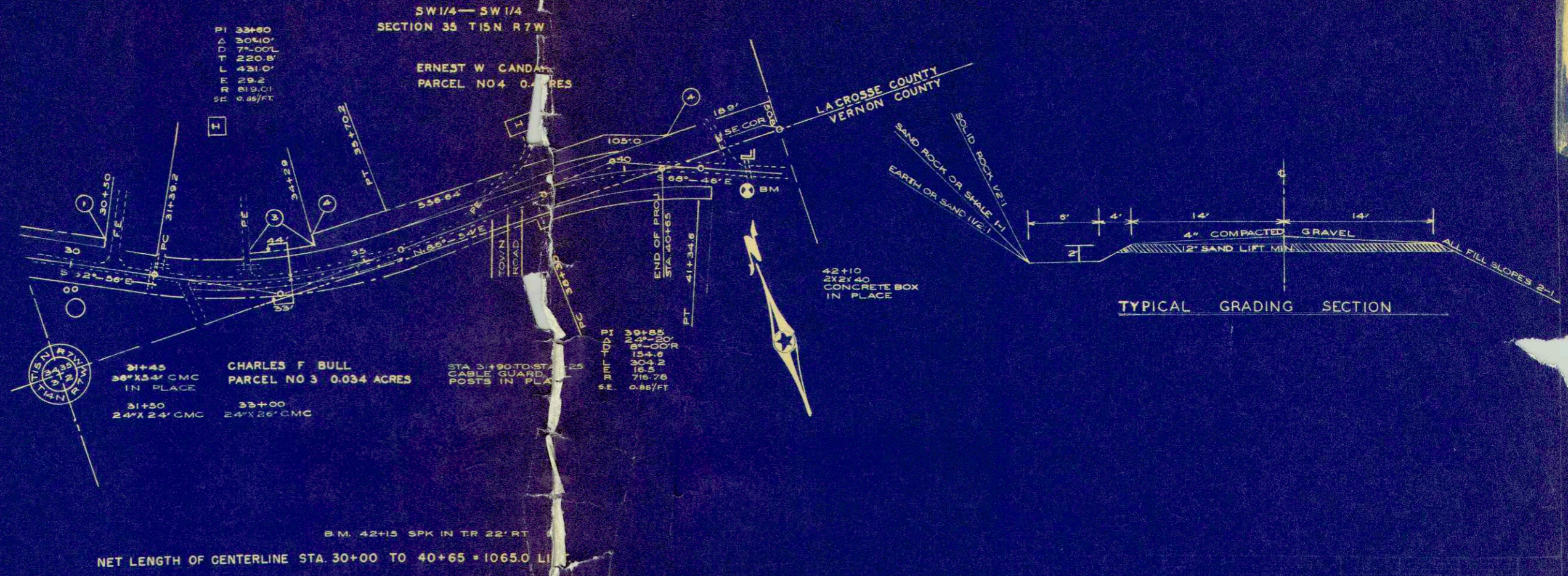
1+00 TO 30+00 = 2900.0 LIN. FT.

SE 1/4 - SE 1/4

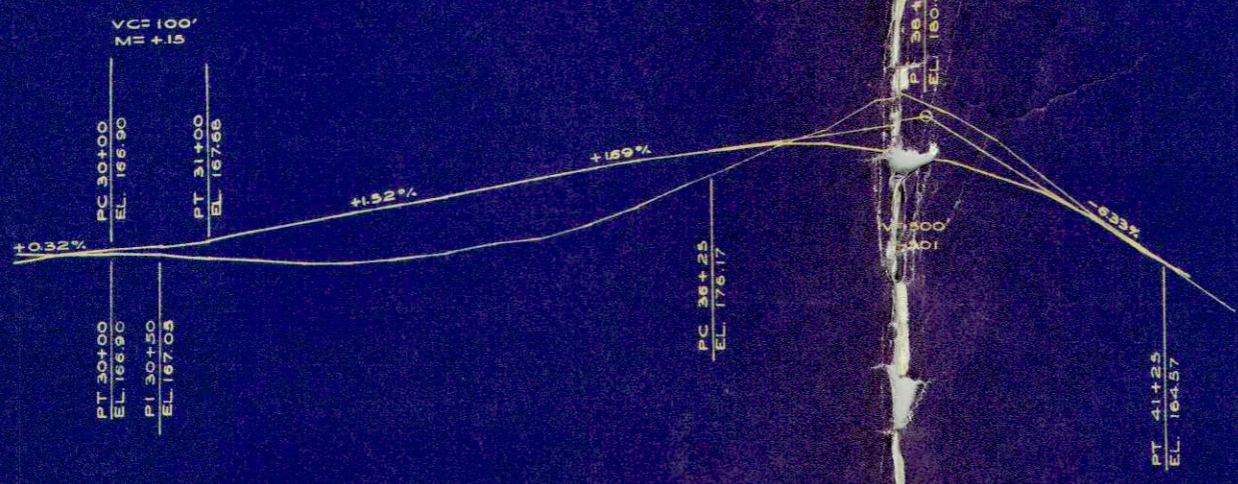
B.M. #1 0+50 SPK. IN PP NO. 9414GG 108 70' RT. 100.00
 B.M. #2 7+10 SPK. IN PP NO. 9414GG 106 40' LT. 129.05
 B.M. #3 30+00 SPK. IN PP NO. 414 24' RT. 155.67



B.P.R. DIVISION	PROJECT	SHEET NUMBER	TOTAL SHEETS
5N	S 0612 (1)	4	4



TYPICAL GRADING SECTION



165.69	29
166.56	30
166.90	1
167.20	2
167.66	3
166.50	4
169.32	5
170.14	6
170.96	7
171.78	8
172.60	9
173.42	40
174.24	1
175.06	2
175.88	
176.46	
177.02	
177.24	
176.72	
175.28	
173.71	
171.59	
169.33	
165.93	
162.91	