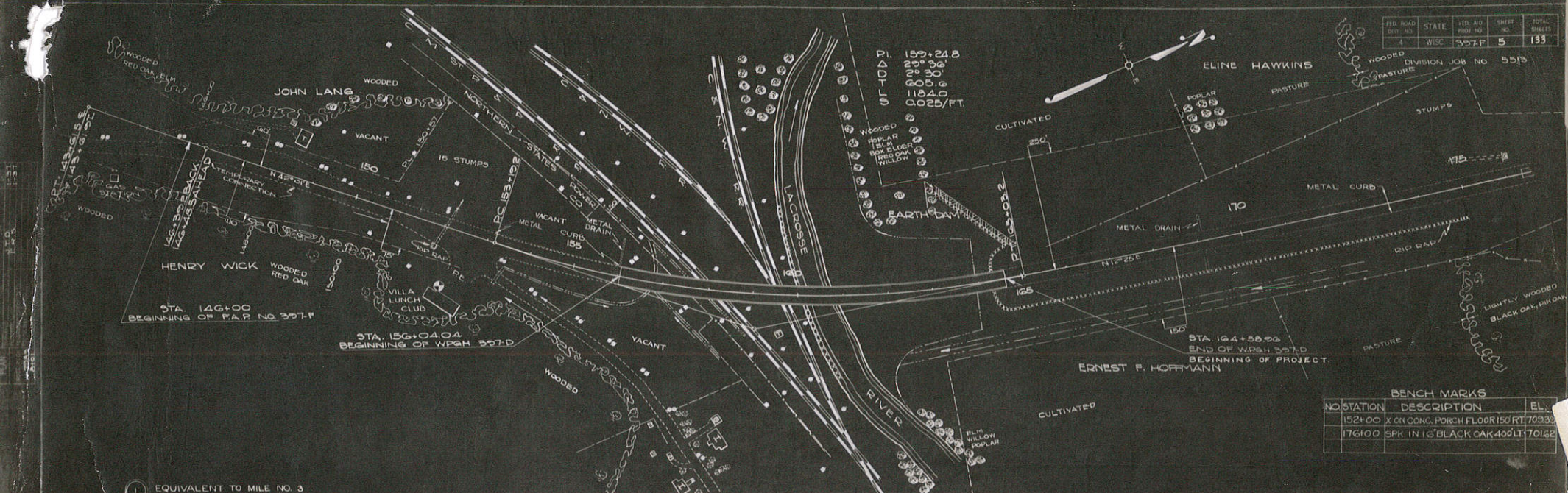


FED. ROAD DIST. NO.	STATE	FED. AID PROJ. NO.	SHEET NO.	TOTAL SHEETS
4	WISC	397 F	5	133



BENCH MARKS

NO.	STATION	DESCRIPTION	EL.
	152+00	X ON CONC. PORCH FLOOR	150 FT 70.93
	176+00	SPK. IN 1" BLACK CAR	400 FT 70.62

1 EQUIVALENT TO MILE NO. 3 OF F.A.P. 397 F
100.0

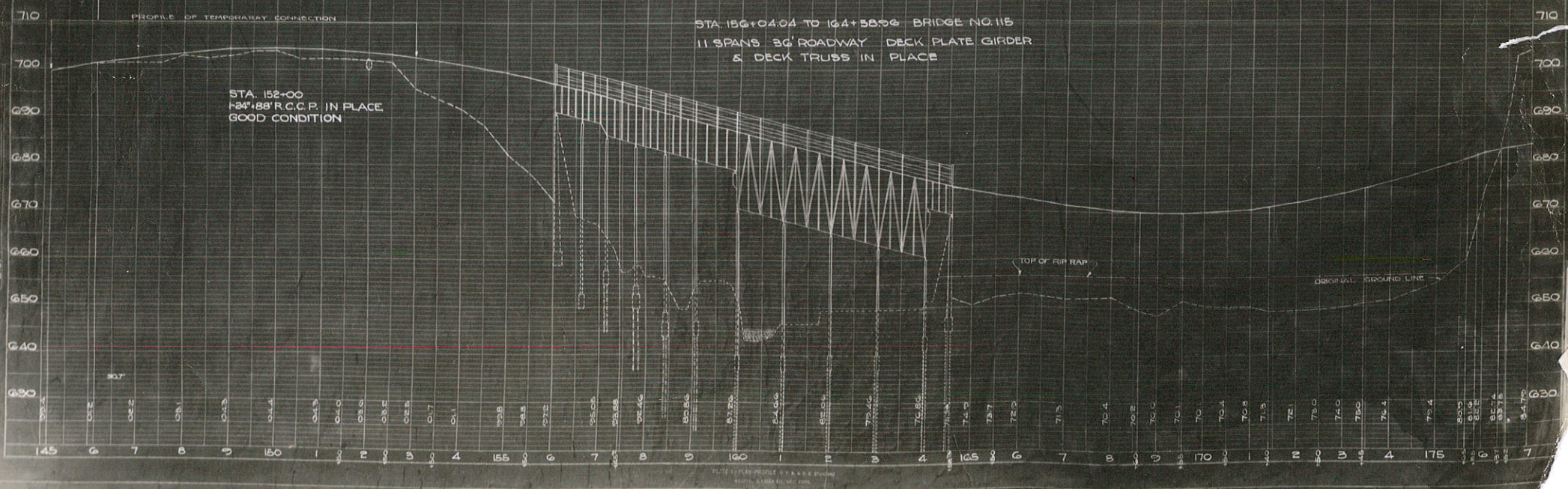
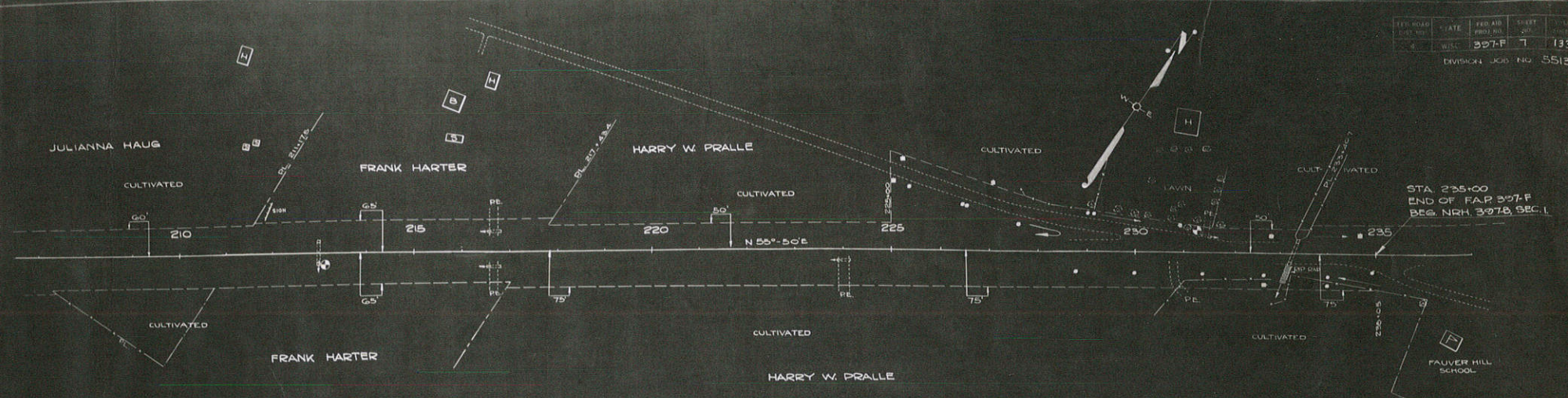


PLATE 1 - PLAN PROFILE OF R.C.C.P. BRIDGE
SCALE: 1" = 100' HORIZ. 1" = 10' VERT.



BENCH MARKS

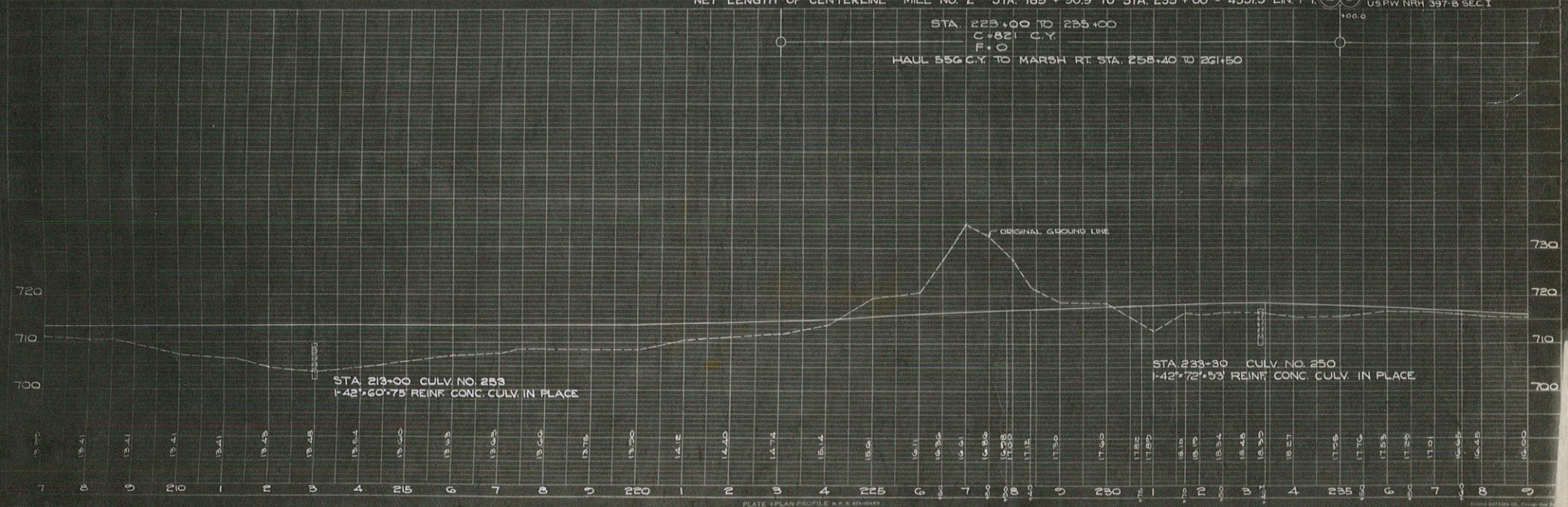
NO.	STATION	DESCRIPTION	EL.
	213+00	RT END WALL CATTLE PASS	109.71
	231+00	SPK. IN ROOT OF 47' MAPLE LT	111.94

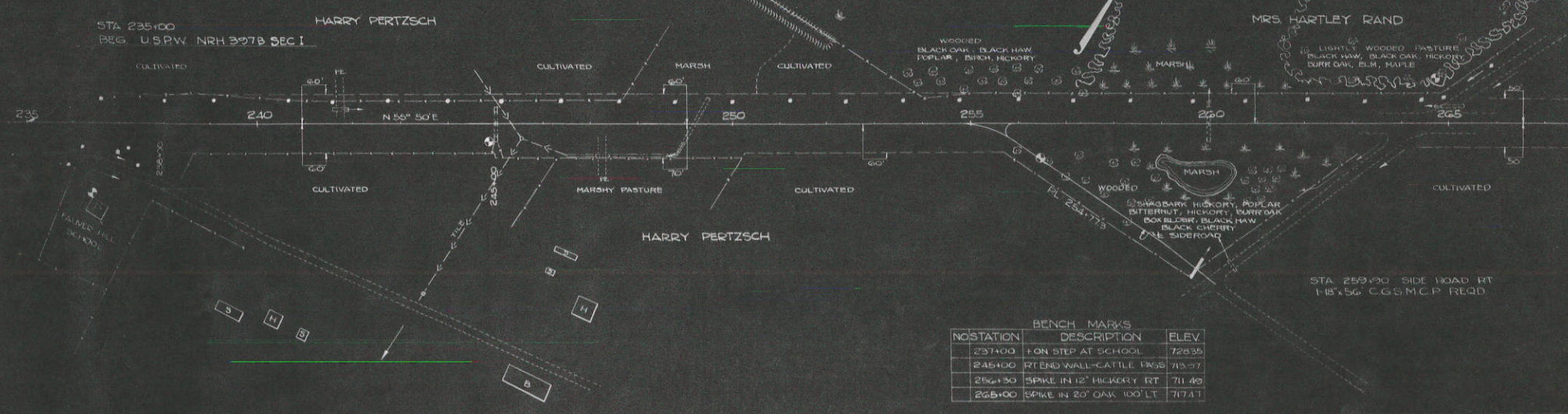
NET LENGTH OF CENTERLINE MILE NO. 2 STA. 185 + 00.9 TO STA. 235 + 00 = 4551.5 LIN. FT. ⁽²⁾/₍₃₎ EQUIVALENT TO MILE NO. 1 OF US PW NRH 397-B SEC. 1

STA. 223+00 TO 235+00
 C+821 C.Y.
 F+0
 HAUL 556 C.Y. TO MARSH RT. STA. 258+40 TO 261+50

JOB NO. 5513

5552





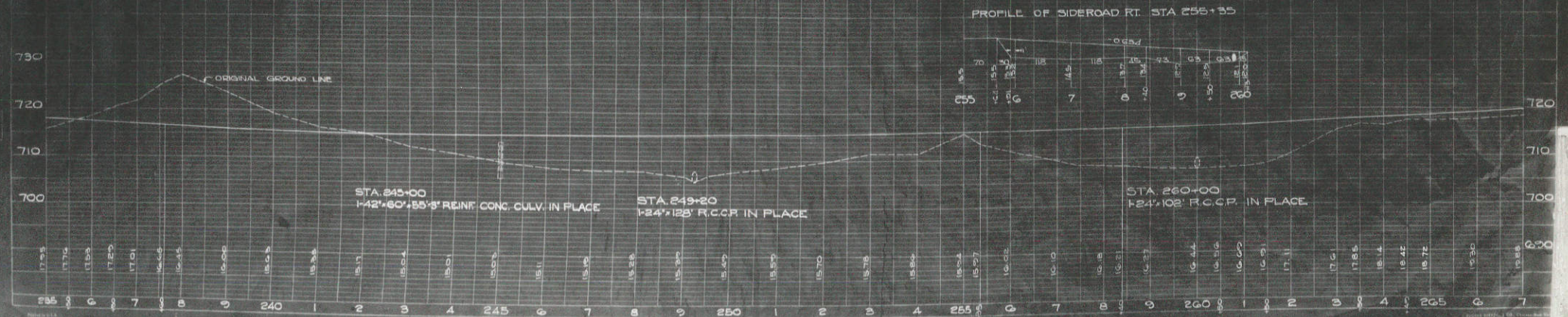
BENCH MARKS

NOTATION	DESCRIPTION	ELEV.
237+00	IRON STEP AT SCHOOL	725.35
245+00	RT END WALL - CATTLE PASS	713.57
256+50	SPIKE IN 12" HICKORY RT	711.42
265+00	SPIKE IN 20" OAK 100' LT	717.17

STA. 235+00 TO 249+00
 C = 625 C.Y.
 F = 0 C.Y.
 HAUL 415 C.Y. TO MARSH RT. STA. 256+40 TO 261+50

STA. 254+00 TO 262+00
 C = 40 C.Y.
 F = 1348 C.Y. @ 50% SHG. = 2019 C.Y. (MARSH)
 F = 2395 C.Y. @ 30% SHG. = 3114 C.Y. (SIDE RD)
 B = 237 C.Y.
 HAUL IN 1519 C.Y. FROM STA. 181+00 TO 194+00
 " " 896 C.Y. " " 197+00 " 207+00
 " " 558 C.Y. " " 223+80 " 234+00
 " " 415 C.Y. " " 235+00 " 245+00
 " " 1998 C.Y. " " 268+00 " 283+08

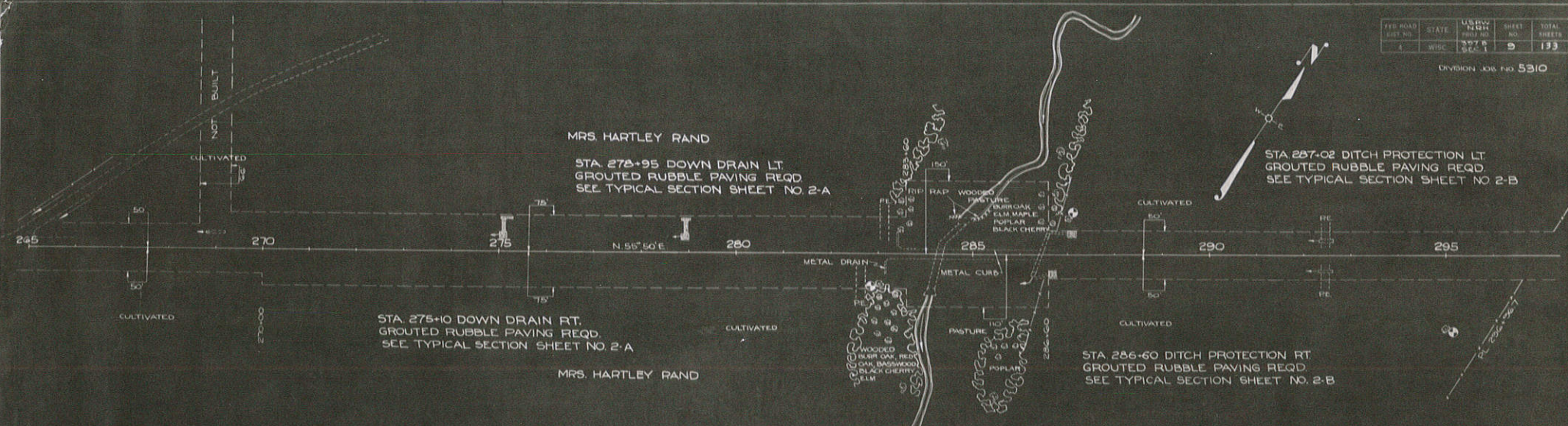
PROFILE OF SIDEROAD RT.



PROFILE OF SIDEROAD RT. STA. 255+35

FED. ROAD DIST. NO.	STATE	US HWY. NO.	SHEET NO.	TOTAL SHEETS
4	WV	397 B	9	133

DIVISION JOB NO. 5310



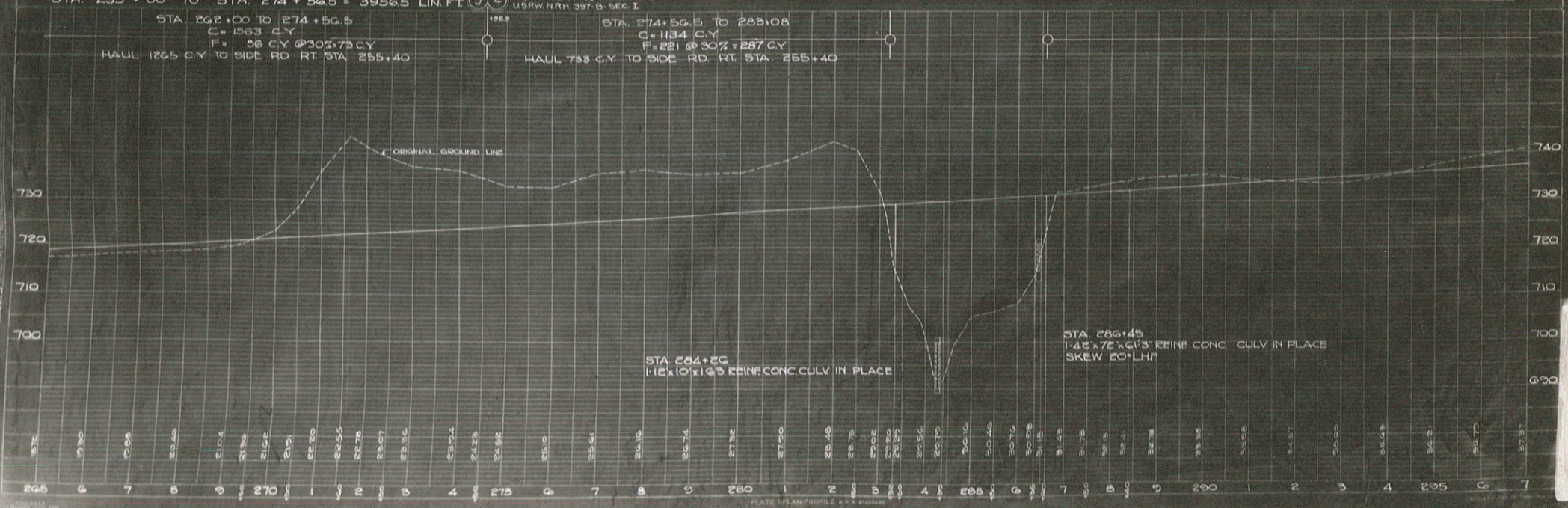
NET LENGTH OF CENTERLINE MILE NO. 3
 STA. 235 + 00 TO STA. 274 + 56.5 = 3956.5 LIN. FT. 3 4 EQUIVALENT TO MILE NO. 2 OF
 USPW, NRH 397 B, SEC. 1

STA. 262+00 TO 274+56.5
 C = 1563 C.Y.
 F = 56 C.Y. @ 30% = 168 C.Y.
 HAUL 1265 C.Y. TO SIDE RD. RT. STA. 255+40

STA. 274+56.5 TO 283+08
 C = 1134 C.Y.
 F = 221 @ 30% = 66 C.Y.
 HAUL 733 C.Y. TO SIDE RD. RT. STA. 255+40

BENCH MARKS

NO.	STATION	DESCRIPTION	EL.
	283+00	TOP SPIKE IN 30' OAK 6.5' RT.	726.22
	287+00	TOP SPIKE IN 10' BOX ELDER LT.	734.41
	295+00	SPIKE IN 24' ELM 150' RT.	739.60

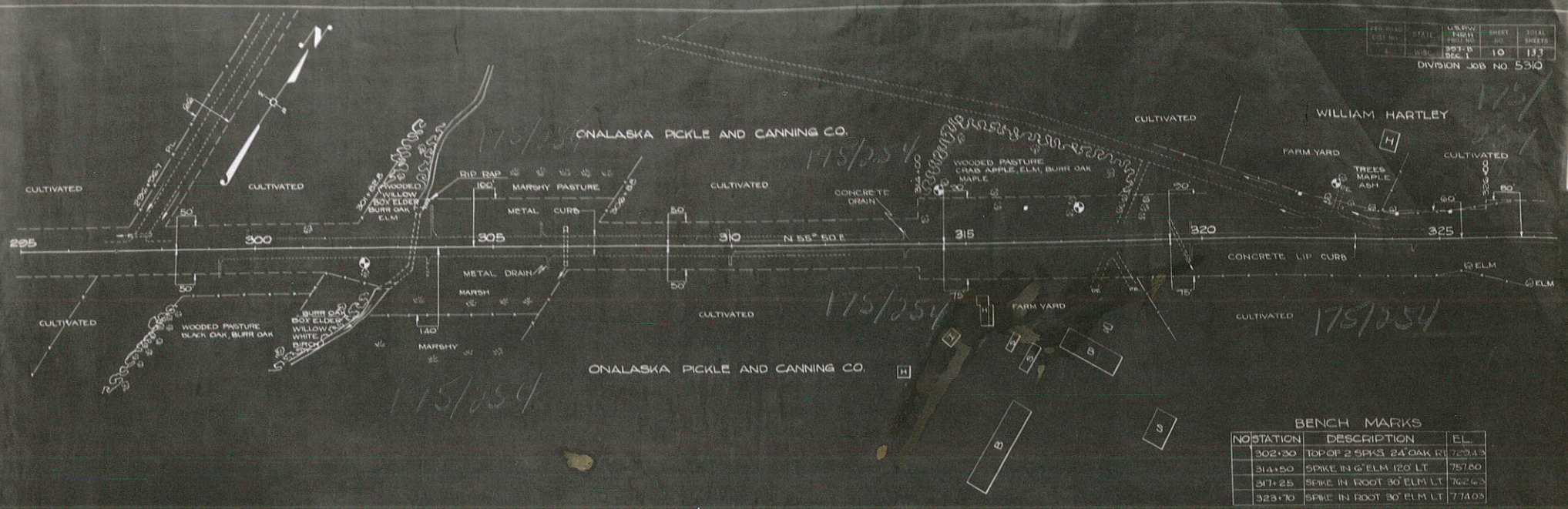


PLAN
 1:500
 1/2" = 100'

PROFILE
 1:500
 1" = 10'

PLATE 1-PLAN/PROFILE & C & S

PROJECT NO.	STATE	US HWY	SHEET	TOTAL SHEETS
4	MO.	397-B	10	133
DIVISION JOB NO. 5310				

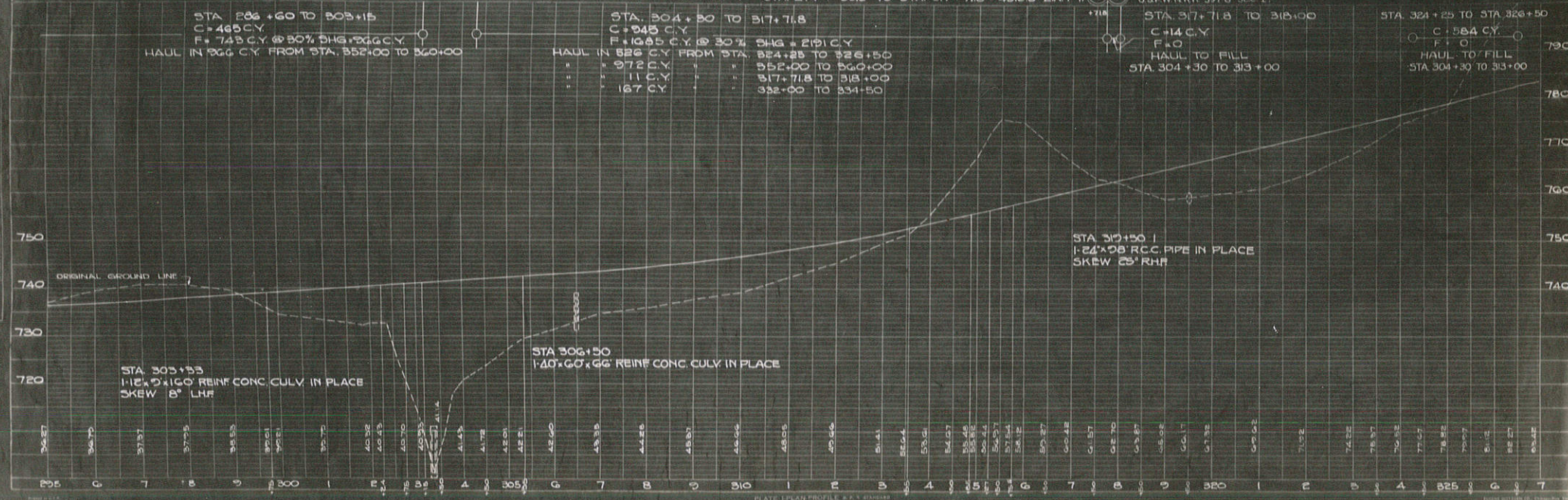


BENCH MARKS

NO STATION	DESCRIPTION	EL.
302+30	TOP OF 2 SPKS 24' OAK RT	729.13
314+50	SPIKE IN G' ELM 120' LT	757.80
317+25	SPIKE IN ROOT 30' ELM LT	762.63
323+70	SPIKE IN ROOT 30' ELM LT	774.03

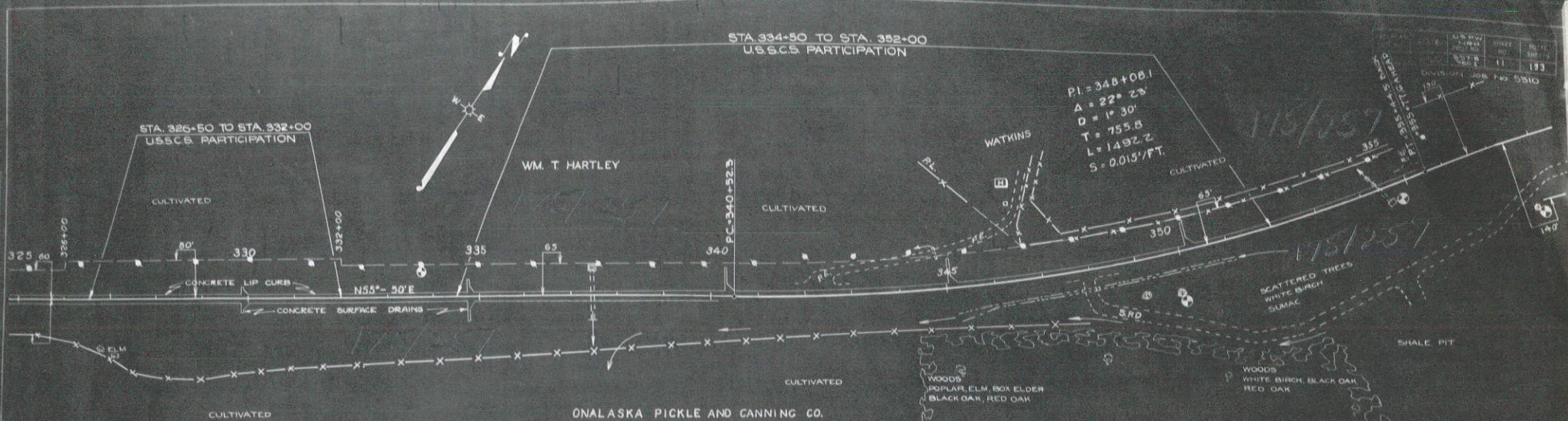
NET LENGTH OF CENTERLINE MILE NO. 4 STA. 274 + 56.5 TO STA. 317 + 71.8 = 4315.3 LIN. FT.

④ ⑤ EQUIVALENT TO MILE NO. 3 OF US HWY. 397-B SEC. 1.



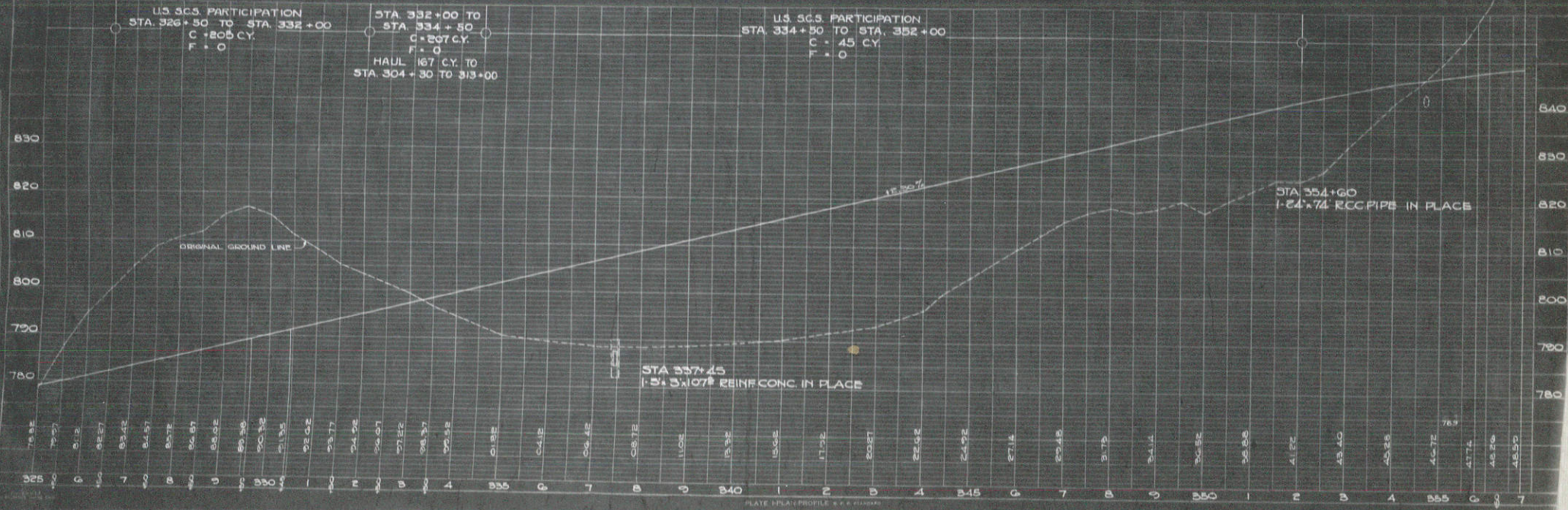
PLAN
1" = 40'
DATE: 11-1-57
BY: [Signature]

PROFILE
1" = 10'
DATE: 11-1-57
BY: [Signature]



BENCH MARKS

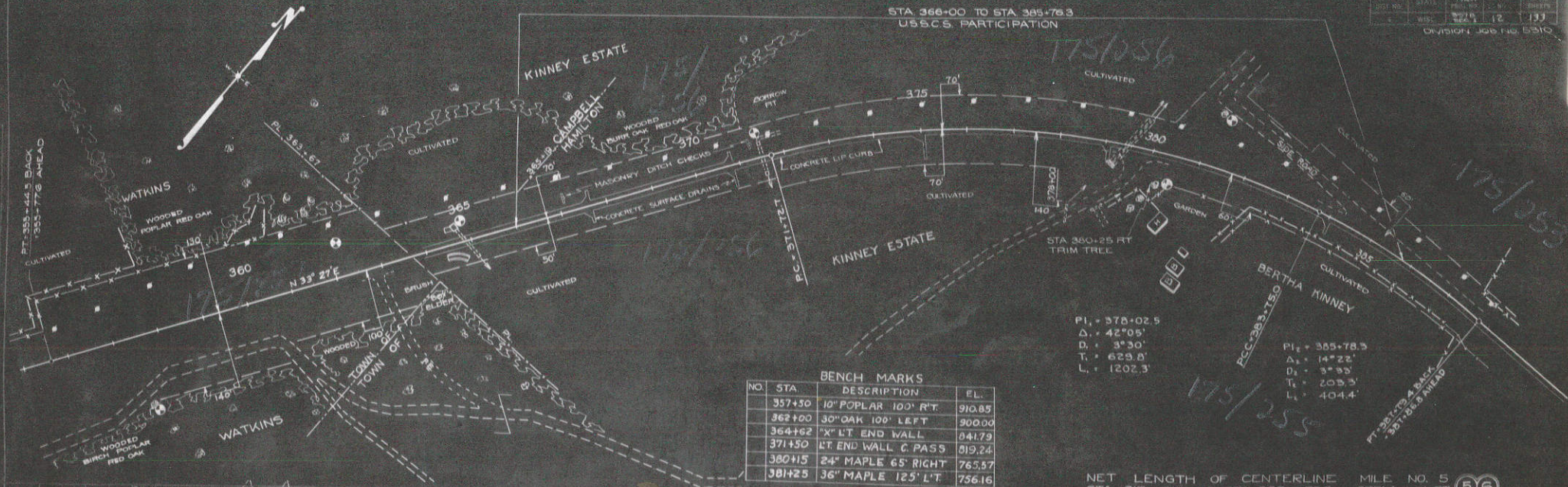
NO.	STATION	DESCRIPTIONS	ELEV.
	338+82	LAG SCREW IN T.P. LT	800.46
	350+00	ROOT OF 30" OAK 40' LT	833.44
	354+70	N.E. COR. DROP INLET RT	845.94
	337+50	10" POPLAR 100' R.T	910.85



11/15/25
 11/15/25
 11/15/25

11/15/25
 11/15/25
 11/15/25

REV.	DATE	BY	CHKD.	TOTAL
1	10/24/56	W.S.	W.S.	137



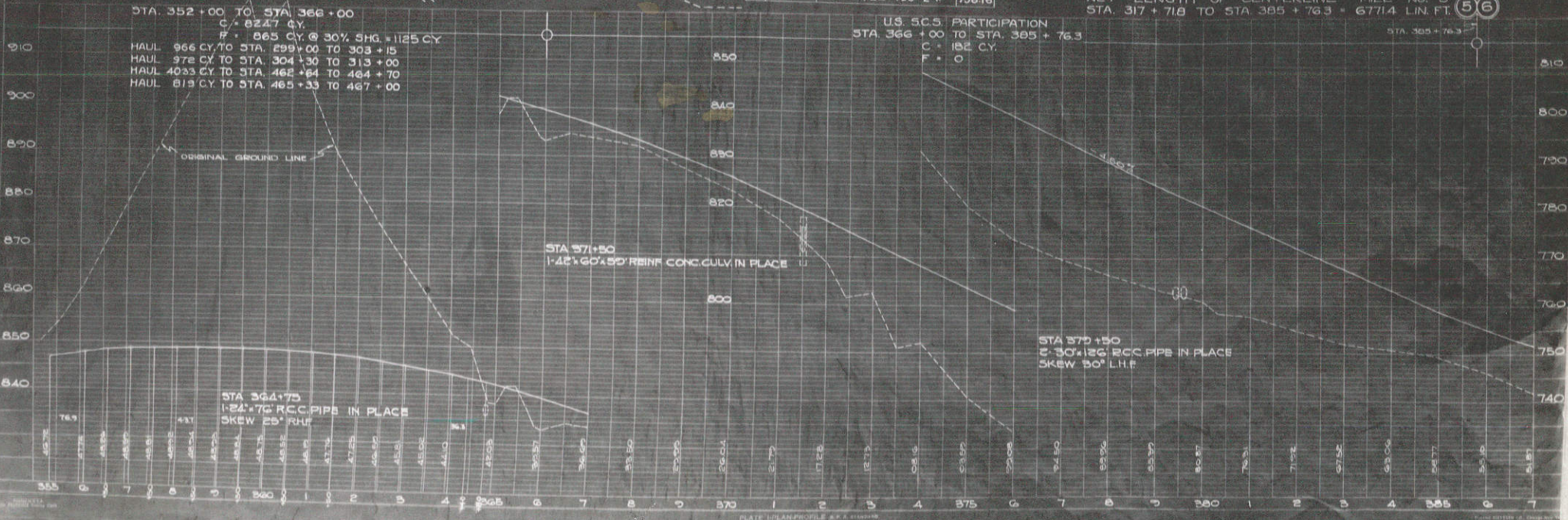
BENCH MARKS

NO.	STA.	DESCRIPTION	EL.
357+50		10" POPLAR 100' R.T.	910.85
362+00		30" OAK 100' LEFT	900.00
364+62		X" LT END WALL	841.79
371+50		LT END WALL C. PASS	819.24
380+15		24" MAPLE 65' RIGHT	765.57
381+25		36" MAPLE 125' LT	756.16

PI = 370+02.5
 Δ = 42°05'
 D = 3°30'
 T = 629.8'
 L = 1202.3'

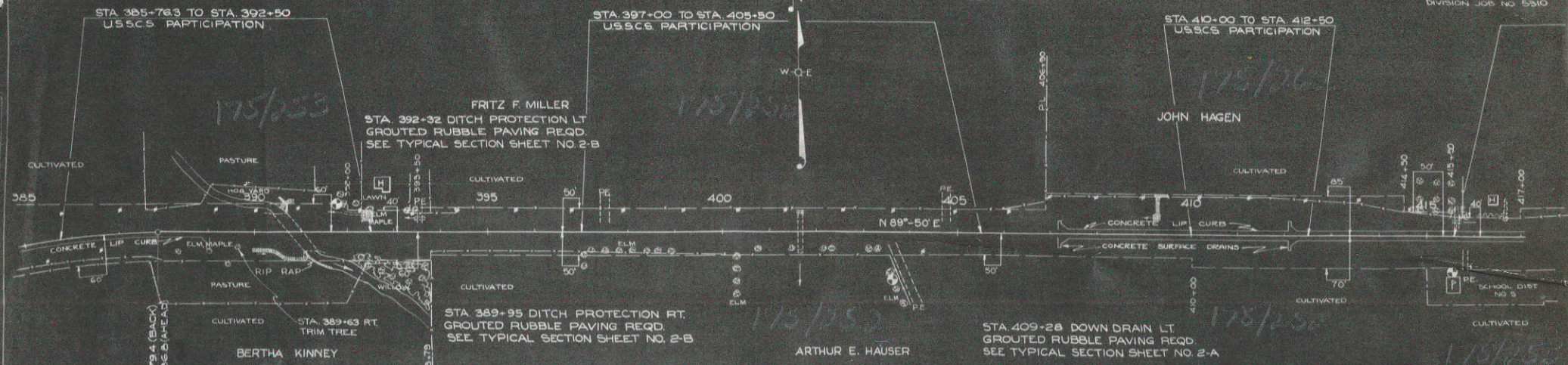
PI = 385+78.3
 Δ = 14°22'
 D = 3°35'
 T = 203.3'
 L = 404.4'

NET LENGTH OF CENTERLINE MILE NO. 5
 STA. 317+718 TO STA. 385+76.3 = 6771.4 LIN. FT. (56)



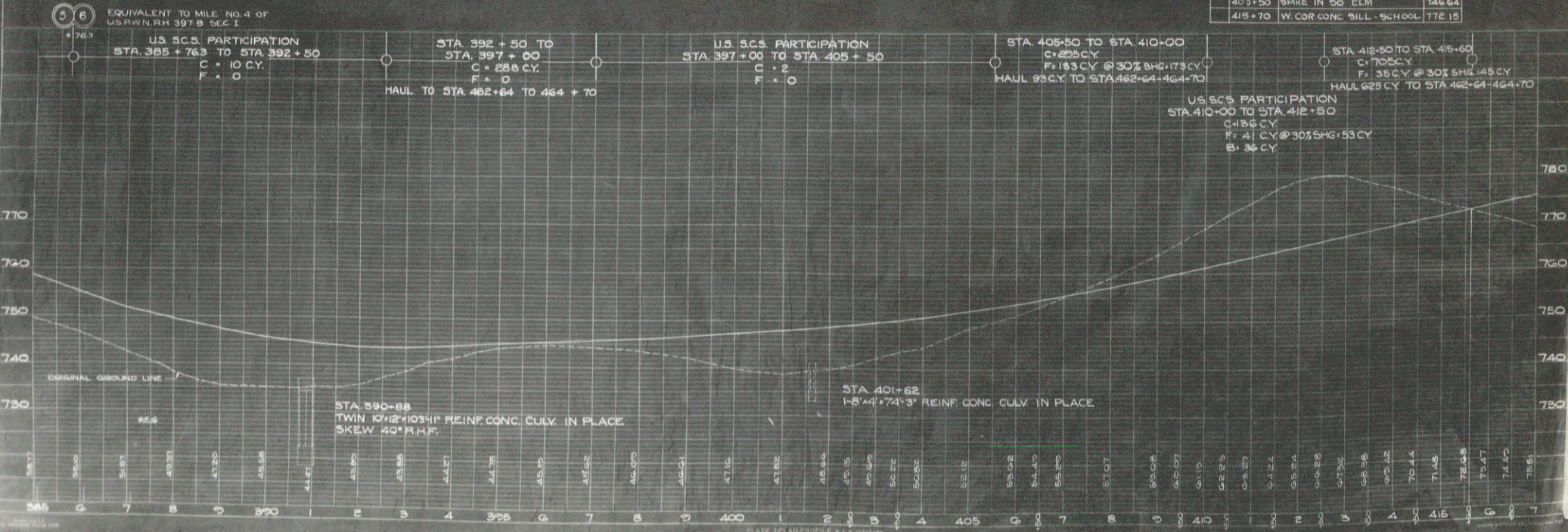
PROFILE
 1" = 10'
 1" = 100'

PLATE IN PLAN PROFILE S.P. 6 11/10/56



BENCH MARKS

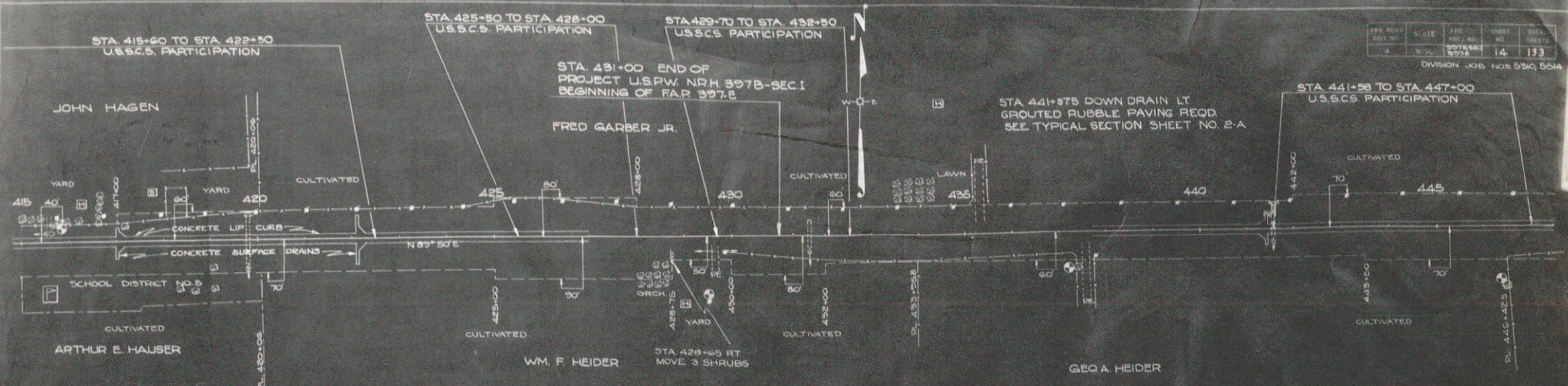
NO.	STA.	DESCRIPTION	EL.
391+50		SPK. IN 36" MAPLE 60' LT.	738.52
403+50		SPIKE IN 50' ELM.	746.64
415+70		W. COR CONC. BILL - SCHOOL	772.15



PLAN
 1" = 40'
 11/15/53

PROFILE
 1" = 40'
 11/15/53

PLATE HP AN PROFILE 2-A 2 (continued)

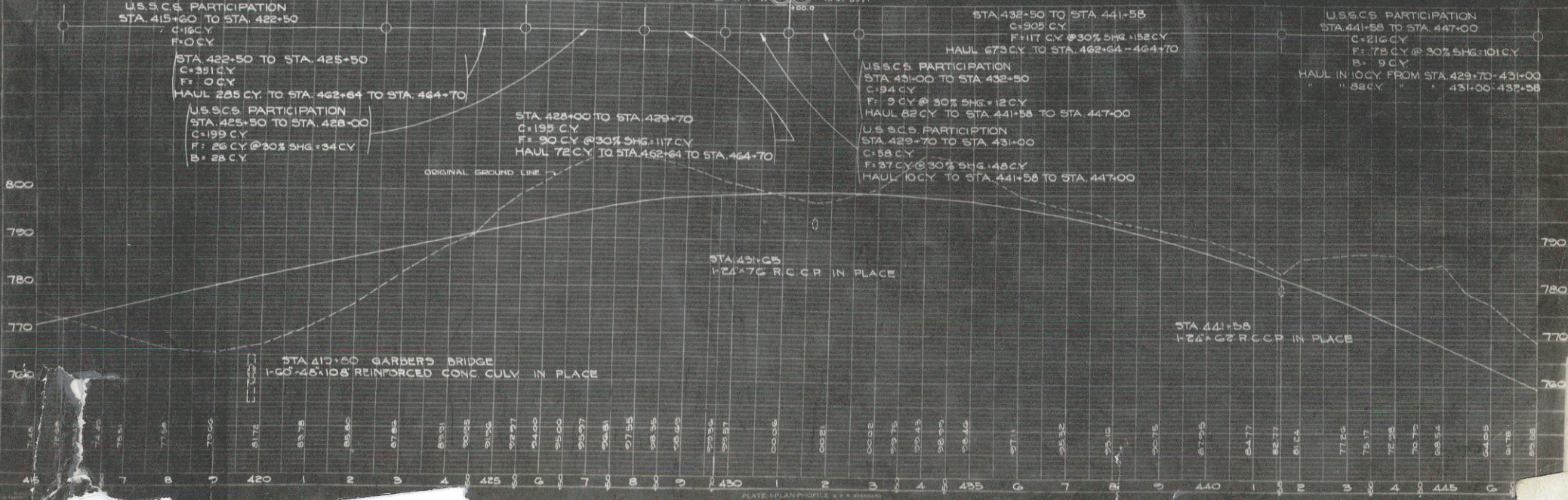


PLAN
SCALE 1" = 40'
DATE 11/1/53
BY [Signature]

BENCH MARKS

NO	STATION	DESCRIPTION	EL.
1	415+70	SPIKE IN 24' ELM. 40' LT	774.77
2	429+50	SPIKE IN TEL. POLE 15' RT	800.24
3	437+40	SPIKE IN 30' ELM. 80' RT	797.23
4	442+40	SPIKE & WASHER TOP 30' ST. FE	780.73

NET LENGTH OF CENTERLINE MILE NO. 6 STA. 385 + 76.3 TO STA. 431 + 00 = 4516.3 LIN. FT. (6) (7) EQUIVALENT TO MILE NO. 1 OF FAR 397F



PROFILE
SCALE 1" = 20'
DATE 11/1/53
BY [Signature]