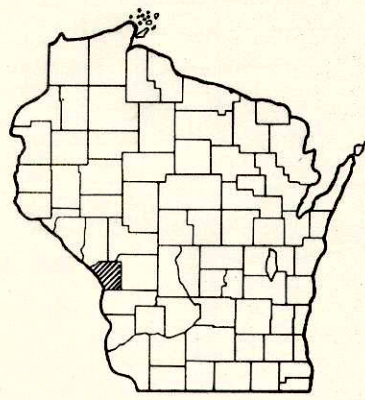


Index of Sheets

Sheet No. 1	Title
Sheet No. 2-2.1	Typical Cross Sections
Sheet No. 3	Estimate of Quantities
Sheet No. 3A-3C	Miscellaneous Quantities
Sheet No. —	Right of Way Plat
Sheet No. 4-7	Plan and Profile
Sheet No. 8-8.5	Standard Details
Sheet No. —	Structure Plans
Sheet No. 9-12	Cross Sections



Design Designation

A. D.T.	=	15,000 (1970)
A. D.T.	=	18,520 (1975)
D.H.V.	=	1,670
D.	=	60%
T.	=	8%
V.	=	25 M.P.H.

Conventional Signs

State Line	-----	Culverts in Place	-----
County Line	-----	Culverts Required	-----
Township or Range Line	-----	Drop Inlet	-----
Section Line	-----	Power Pole	-----
New Right of Way Line	-----	Telephone or Telegraph Pole	-----
Present Right of Way Line	-----	Right of Way Markers	-----
Wire Fence { Woven	-----	Reference Stake for Hubs Only	-----
Barbed	-----	Marsh	-----
Lot Line	-----	Hedge	-----
Corporate or City Limits	-----	Trees	-----
Property Line	-----	Ground Elevation	Datum Line PL 1
Traveled Way or P.E.	-----	Grade Elevation	Datum Line PL 16
Railroads	-----		
Base or Survey Line	-----		

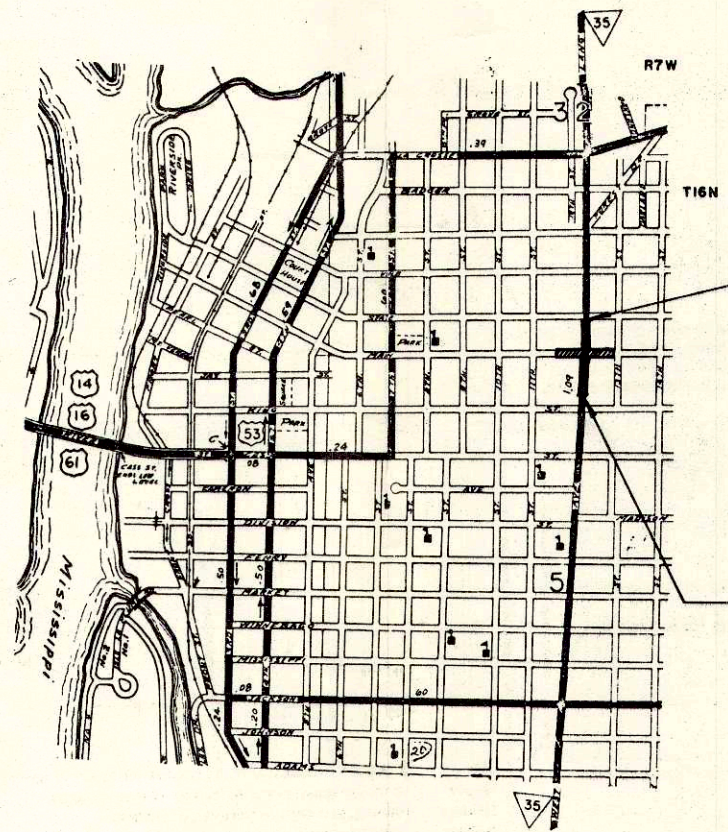
STATE OF WISCONSIN
DEPARTMENT OF TRANSPORTATION
DIVISION OF HIGHWAYS

PLAN AND PROFILE OF PROPOSED

WEST AVENUE, CITY OF LA CROSSE
S.T.H. 35
LA CROSSE COUNTY

PROJECT IDENTIFICATION NUMBER	FEDERAL PROJECT DESIGNATION
5991-1-02, 03	T 4140 (2)

Scales { Plan 1 in. = 20 ft.
Profile Hor. 1 in. = 20 ft. Vert. 1 in. = 1 ft.
Cross Sections Hor. 1 in. = 5 FT. Vert. 1 in. = 2 FT.



END OF PROJECT T 4140 (2) / 5991-1-02
STA. 9+32
N 663,123 (±200')
E 1,673,002 (±200')
379' NORTH AND 10' EAST OF SOUTH 1/4 CORNER, SECTION 32, T 16 N R 7 W

BEGINNING OF PROJECT T 4140 (2) / 5991-1-02
STA. 0+97
N 662,288 (±200')
E 1,672,962 (±200')
462' SOUTH AND 30' WEST OF NORTH 1/4 CORNER, SECTION 5, T 15 N R 7 W

Layout
Scale 1" = 1000'

Total Net Length of Centerline = 0.158 Mi. URBAN

SCALED FROM U.S.G.S. TOPOGRAPHIC MAP LA CROSSE WISCONSIN, QUADRANGLE FOR IDENTIFICATION ONLY.

Sheet Number	Total Sheets
1	12

APPROVED FOR

STATE OF WISCONSIN
DEPARTMENT OF TRANSPORTATION
DIVISION OF HIGHWAYS

Surveyor: CITY OF LACROSSE District Checker: R.V.R.
Designer: CITY OF LACROSSE C.O. Checker: J.L.J.

Correct:

Date: 4-13-70 *R.H. Siedler*
Recommended for Approval: District Engineer

Date: 5/8/70 *E.J. Byrkit*
Approved: Chief Design Engineer

Date: 5/8/70 *W.J. Burmeister*
State Highway Engineer

U.S. DEPARTMENT OF TRANSPORTATION
FEDERAL HIGHWAY ADMINISTRATION
BUREAU OF PUBLIC ROADS

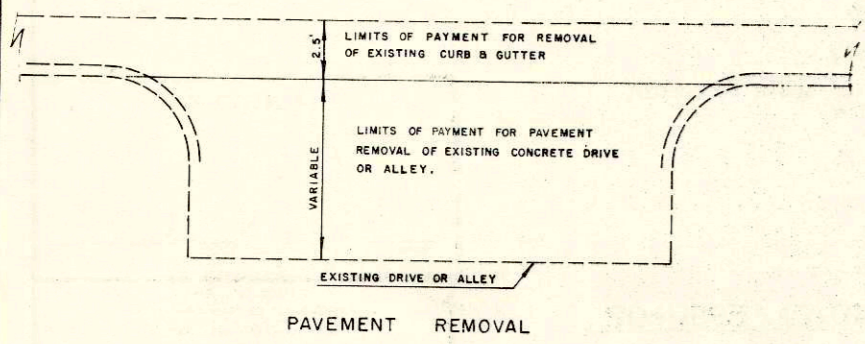
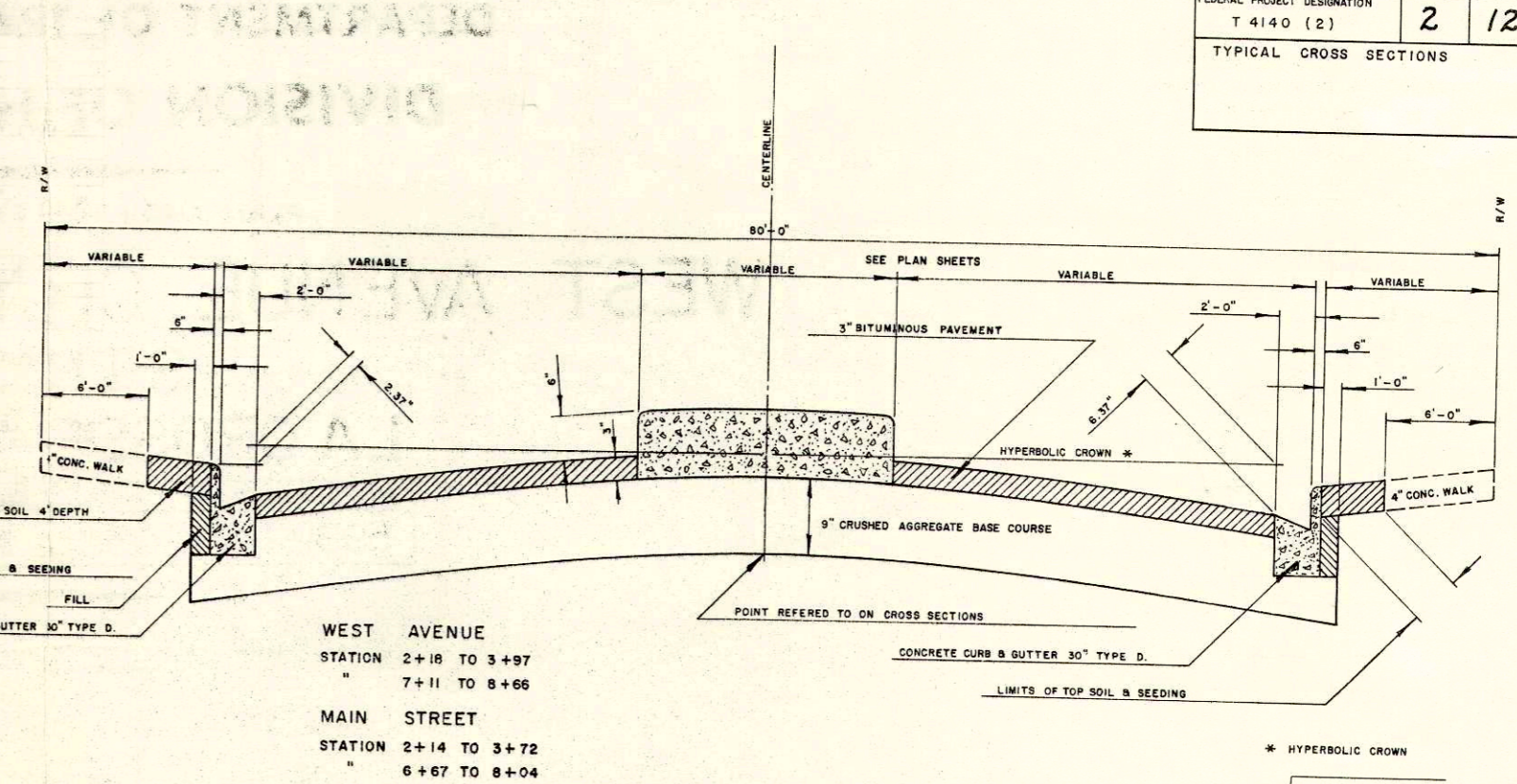
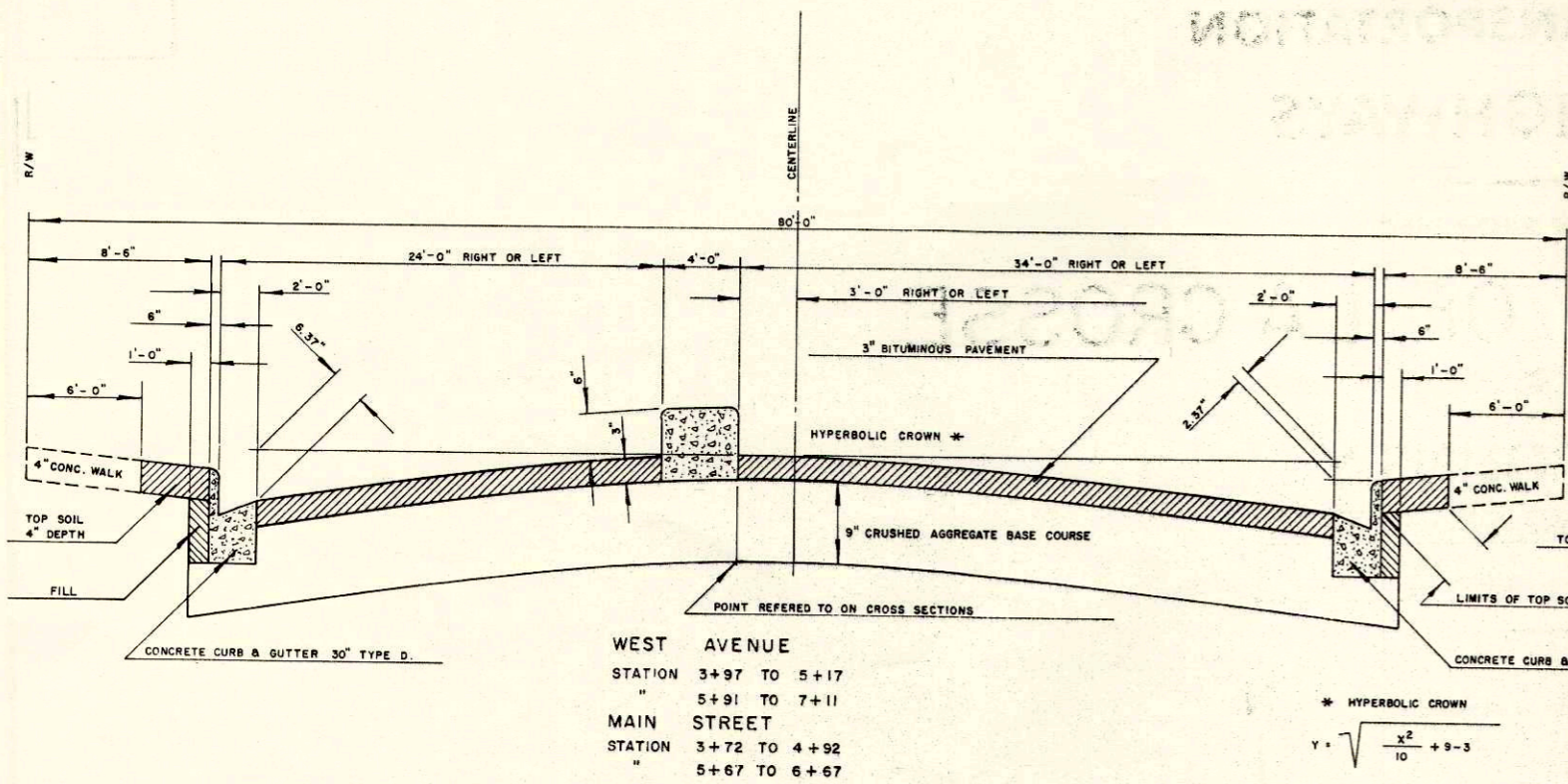
REGION 4 WISCONSIN DIVISION

Approved:

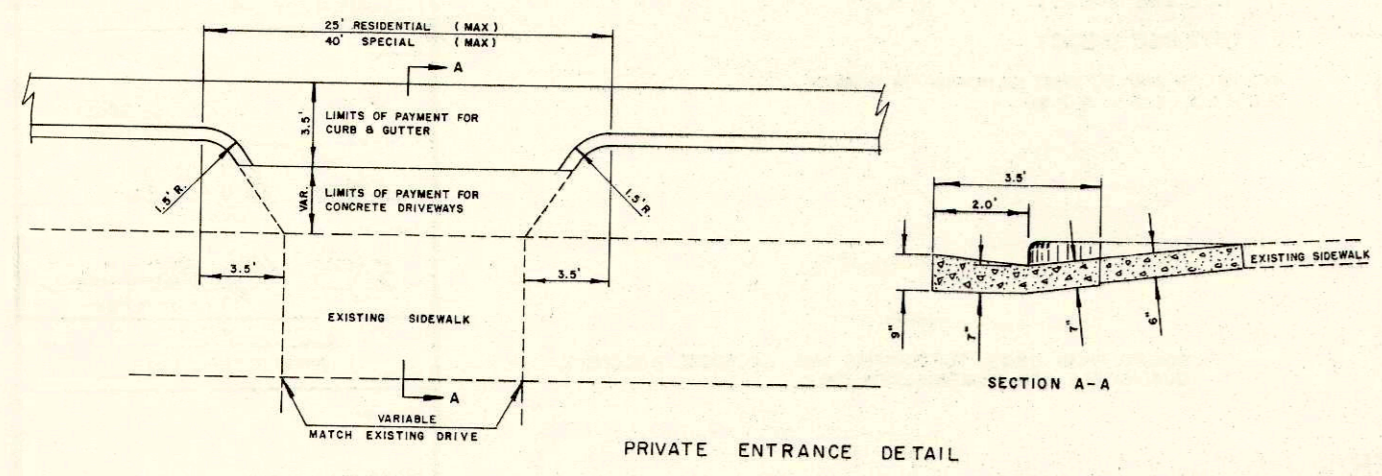
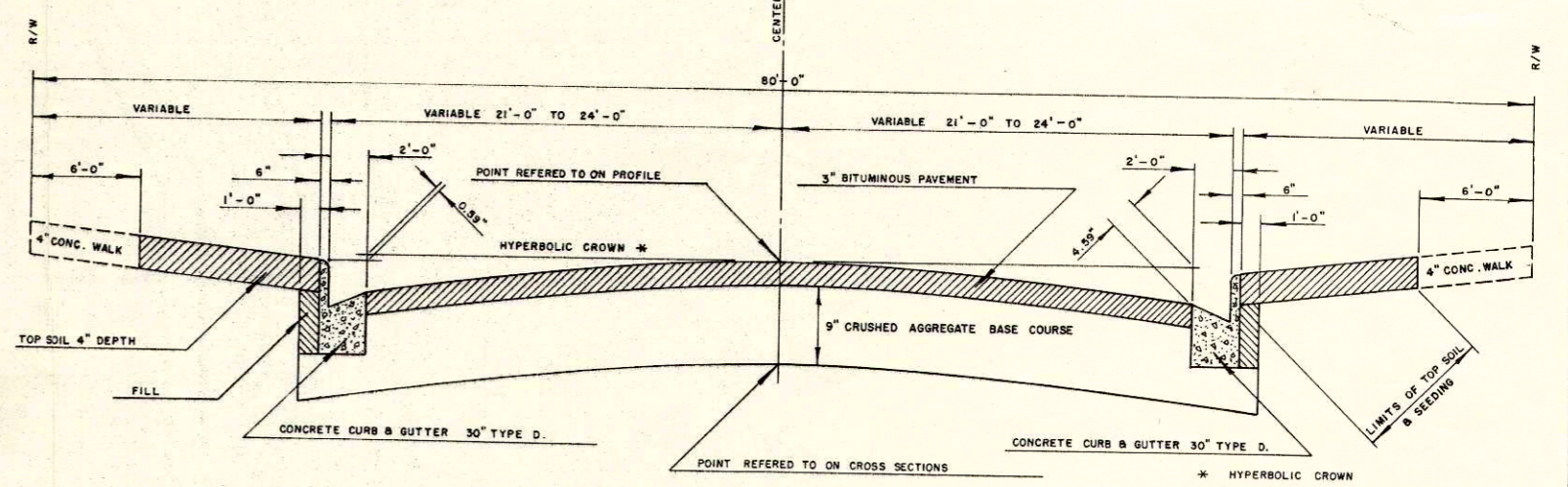
Date: _____
Division Engineer

T 4140 (2) R 25

PROJECT I.D. 5991-1-03	SHEET NUMBER 2	TOTAL SHEETS 12
FEDERAL PROJECT DESIGNATION T 4140 (2)		
TYPICAL CROSS SECTIONS		

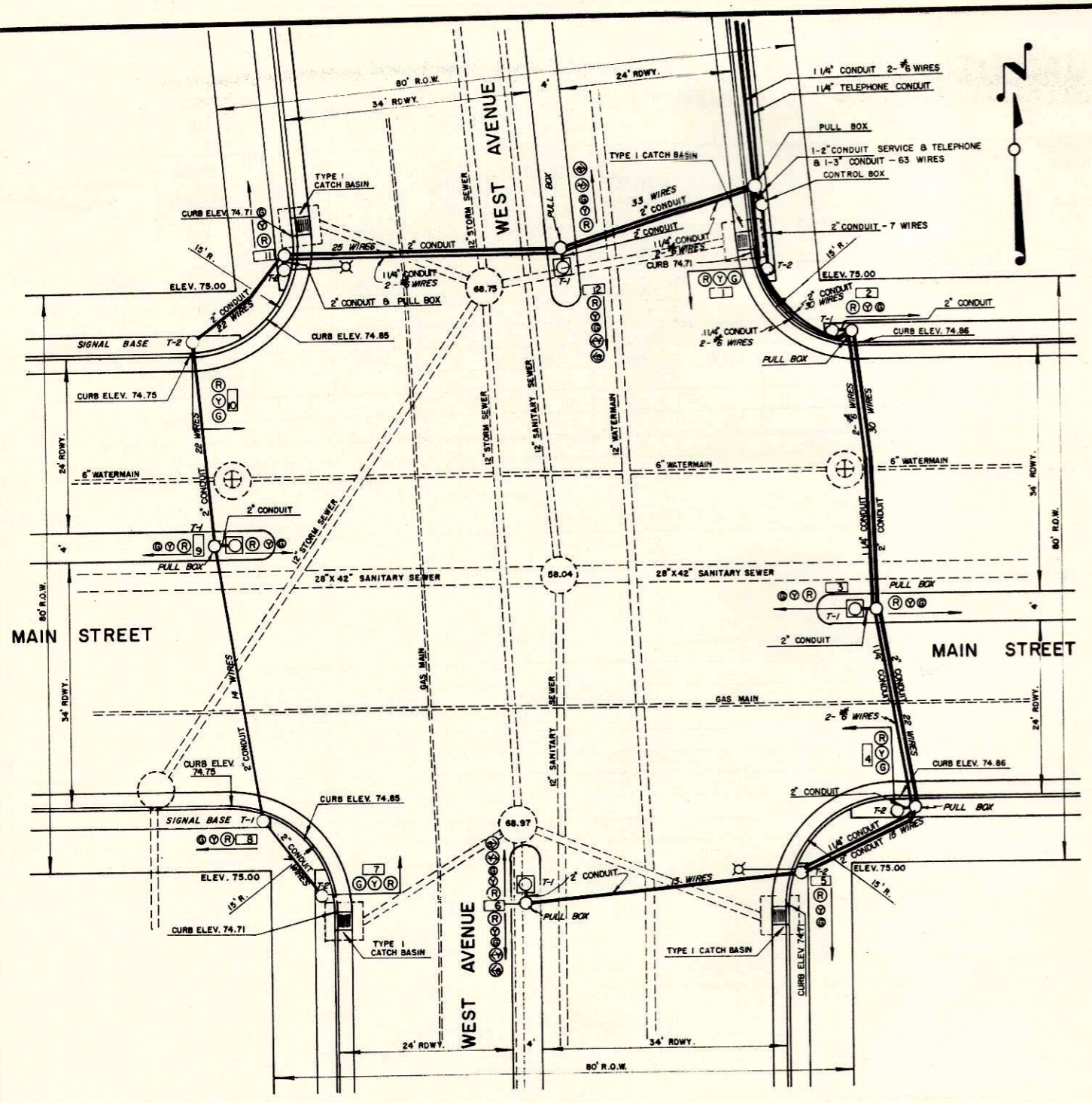


- GENERAL NOTES**
- WHEN THE QUANTITY OF THE ITEMS OF BASE OR SURFACE COURSE IS MEASURED FOR PAYMENT BY THE TON OR CUBIC YARD, THE DEPTH OR THICKNESS OF THE COURSE SHOWN ON THE PLAN IS APPROXIMATE AND THE ACTUAL THICKNESS WILL DEPEND ON THE DISTRIBUTION OF THE MATERIAL AS DIRECTED BY THE ENGINEER.
 - TOPSOIL SHALL BE PLACED AS SHOWN ON PLANS TO AN APPROXIMATE DEPTH OF 4 INCHES AT TIME OF PLACEMENT
 - UTILITIES INVOLVED IN PROJECT ARE:
 - CITY OF LA CROSSE SANITARY SEWER
 - " " STORM SEWER
 - " " WATERMAIN
 - NORTHERN STATES POWER COMPANY ELECTRIC DISTRIBUTION
 - " " GAS
 - LA CROSSE TELEPHONE COMPANY
 - ALL COORDINATES SHOWN ON THIS PLAN ARE REFERENCED TO THE WISCONSIN COORDINATE SYSTEM SOUTH ZONE.
 - THE EXACT LOCATION OF PRIVATE ENTRANCES TO BE DETERMINED IN THE FIELD BY THE ENGINEER.



- STANDARD DETAIL DRAWINGS**
- 3-1.1.7 CONCRETE CURB, GUTTER, COMBINATION CURB & GUTTER SURFACE DRAIN
 - 5-5.1.1.1 CATCH BASINS TYPE I & CATCH BASIN COVERS
 - 5-6.1.1.1 MANHOLES TYPE I & MANHOLE COVERS
 - 7-4.1.5 CONSTRUCTION BARRICADE
 - 8-5.1.6 METAL CONDUIT & FIBER CONDUIT
 - 8-6.1.1 TRAFFIC SIGNAL DETAILS

PROJECT I.D. 5991-1-02,03	SHEET NUMBER 2.1	TOTAL SHEETS 12
FEDERAL PROJECT DESIGNATION T 4140 (2)		
MARKING AND SIGNING MISC. DETAILS		



DETAIL OF INTERSECTION AT WEST AVENUE & MAIN STREET
SCALE 1" = 10'-0"

SEQUENCE OF OPERATION

PRETIMED - DIAL #1 5:00 A.M. - 3:00 P.M.
6:00 P.M. - MIDNIGHT

INTERVAL	WEST AVE. (1,5,7,11)	MAIN ST. (6,12)	PED-X-WALK (N-S)	E-W (E-W)	INTERVAL LENGTH-SEC.	% OF DIAL TIME
1	R	R	---	---	6	10
2	R	R	---	---	3	5
3	G	G	---	---	21	35
4	Y	Y	---	---	3	5
5	R	R	---	---	24	40
6	R	R	---	---	3	5

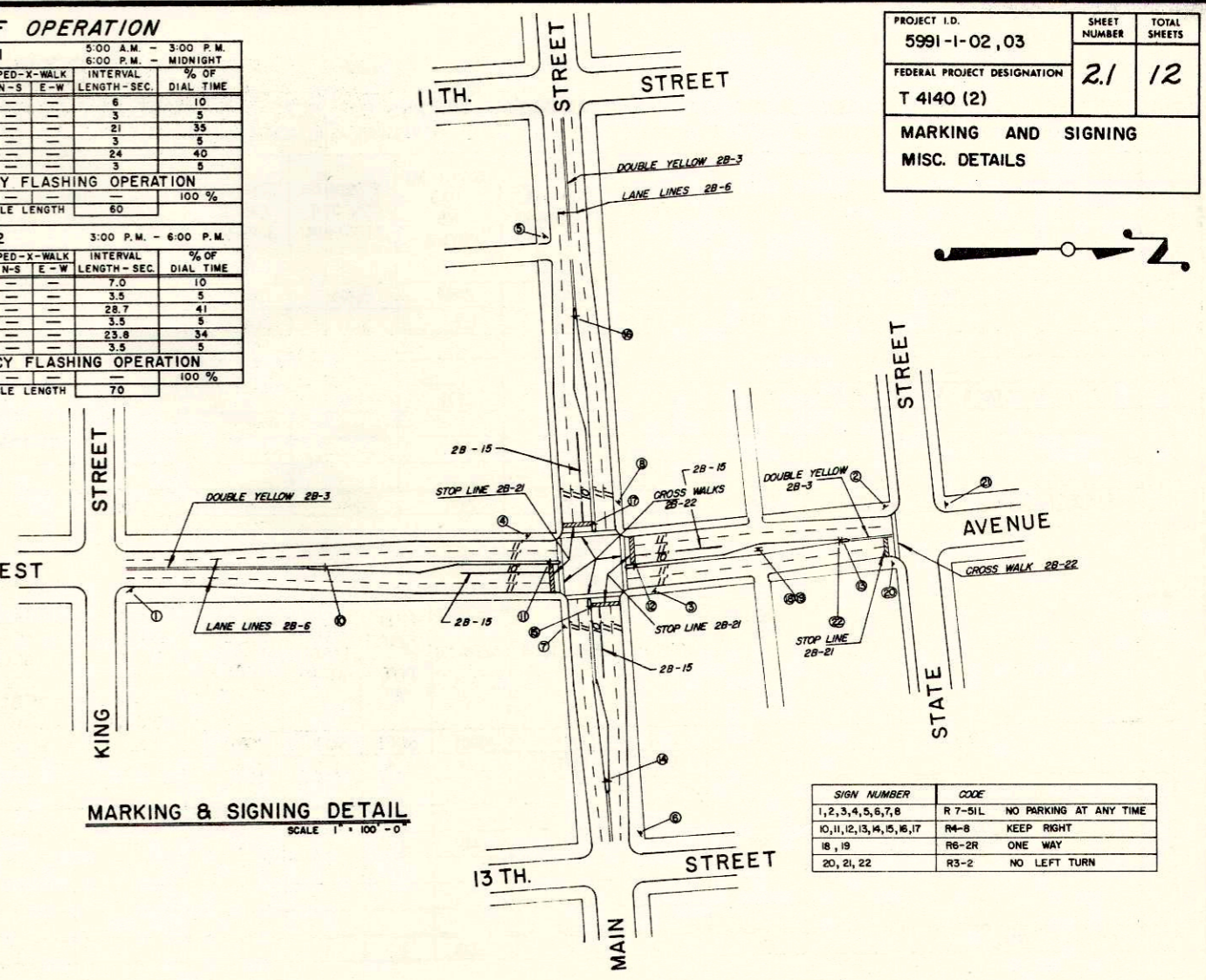
PROGRAMMED OR EMERGENCY FLASHING OPERATION
INDICATION: FY, FR, CYCLE LENGTH: 60, 100%

PRETIMED - DIAL #2 3:00 P.M. - 6:00 P.M.

INTERVAL	WEST AVE. (1,5,7,11)	MAIN ST. (2,3,4,8,9,10)	PED-X-WALK (N-S)	E-W (E-W)	INTERVAL LENGTH-SEC.	% OF DIAL TIME
1	R	R	---	---	7.0	10
2	R	R	---	---	3.5	5
3	G	G	---	---	28.7	41
4	Y	Y	---	---	3.5	5
5	R	R	---	---	23.8	34
6	R	R	---	---	3.5	5

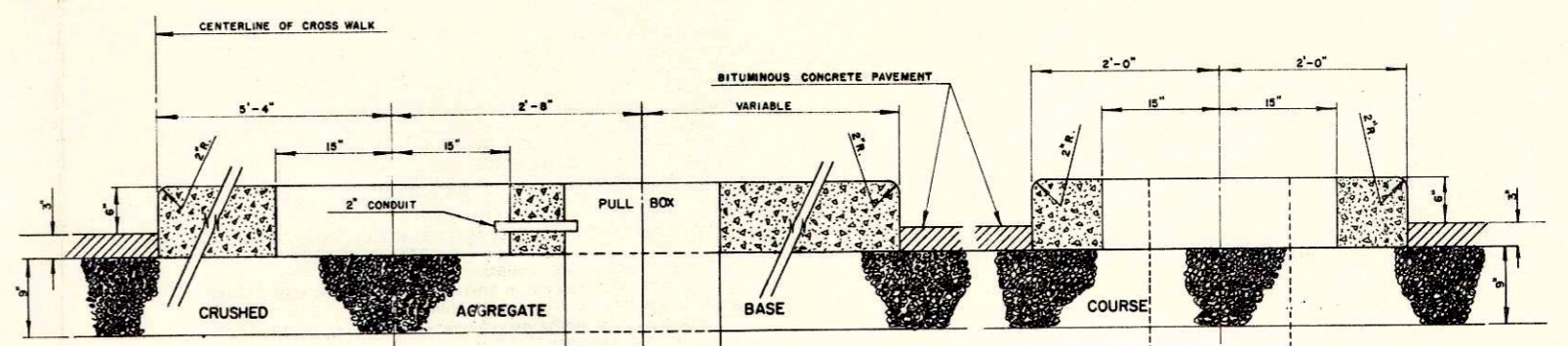
PROGRAMMED OR EMERGENCY FLASHING OPERATION
INDICATION: FY, FR, CYCLE LENGTH: 70, 100%

- STATE FURNISHED ITEMS**
- SIGNAL EQUIPMENT**
- SIGNAL HEADS, AND PEDESTALS
 - CONTROLLER AND PEDESTALS
 - MONITOR RESPONDER
- LIGHTING EQUIPMENT**
- 400 WATT, MERCURY VAPOR LUMINAIRES WITH PHOTO CELL
- REGULATORY SIGNS**
- 21 REGULATORY SIGN AND 15 WOOD SIGN POSTS



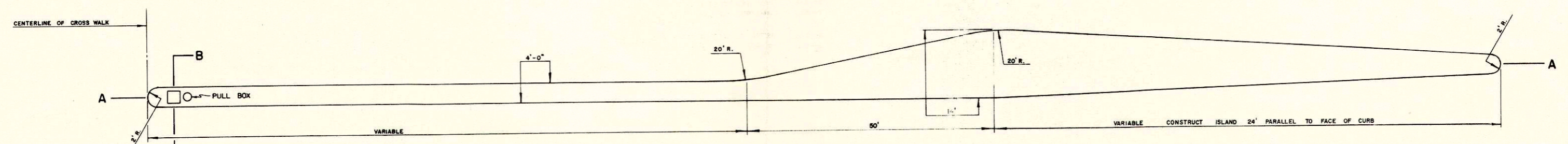
MARKING & SIGNING DETAIL
SCALE 1" = 100'-0"

SIGN NUMBER	CODE
1, 2, 3, 4, 5, 6, 7, 8	R 7-SIL NO PARKING AT ANY TIME
10, 11, 12, 13, 14, 15, 16, 17	R4-B KEEP RIGHT
18, 19	R6-2R ONE WAY
20, 21, 22	R3-2 NO LEFT TURN



SECTION A-A

SECTION B-B



120' ISLANDS A,B&C
100' ISLAND D

DETAILS OF TRAFFIC ISLANDS - A, B, C, D.
SCALE 1" = 10'-0"

ESTIMATE OF QUANTITIES

THIS PROJECT IS TO BE EXECUTED UNDER THE STANDARD SPECIFICATIONS FOR ROAD AND BRIDGE CONSTRUCTION OF THE WISCONSIN DIVISION OF HIGHWAYS - EDITION 1969, APPROVED MARCH 3, 1969, FEDERAL AID REQUIRED CONTRACT PROVISIONS APPROVED NOVEMBER 15, 1968, AND SPECIAL PROVISIONS AS ATTACHED TO PROPOSALS.

CONTRACT NO. 1
STATE FURNISHED MATERIALS

CONTRACT NO. 2
GRADING, BASE,
BITUMINOUS SURFACING
TRAFFIC SIGNALS

PROJECT ID	SHEET NUMBER	TOTAL SHEETS
5991 - 1 - 02, 03	3	12
FEDERAL PROJECT DESIGNATION		
T 4140 (2)		

SEC NO	STATION TO STATION	NET LENGTH OF CENTER LINE	CLEARING	GRUBBING	REMOVING PAVEMENT	REMOVING CURB AND GUTTER	REMOVING CONCRETE SIDEWALK	REMOVING CATCH BASINS	UNCLASSIFIED EXCAVATION	FINISHING ROADWAY	CRUSHED AGGREGATE BASE COURSE	BITUMINOUS CONCRETE PAVEMENT	BITUMINOUS MATERIAL FOR SURFACE COURSE	CONCRETE DRIVEWAY	CONCRETE ALLEY	CONCRETE CURB & GUTTER 30" TYPE "D"	CONCRETE SIDEWALK 4 - INCH	CONCRETE SIDEWALK 6 - INCH	REINFORCED CONCRETE PIPE CLASS III STORM SEWER 12"	CATCH BASINS TYPE 1	MANHOLES TYPE 1	MANHOLE COVERS TYPE "J"	CATCH BASIN COVERS TYPE "A"	ADJUSTING MANHOLE COVERS	METAL CONDUIT 1-1/4 INCH	
			ITEM NO	UNIT	IN DIA.	IN. DIA.	S. Y.	L. F.	S. Y.	EACH	C. Y.	L. S.	C. Y.	TON	TON	S. Y.	S. Y.	L. F.	SQ. FT.	SQ. FT.	L. F.	EACH	EACH	EACH	EACH	EACH
	STA. 0 + 97 - STA. 9 + 32	835.0	1339	1339	392	2891	1590	6	3370	1	4207	1480	89	112	40	2785	12,336	999	740	8	2	2	3	6	661	
PROJECT TOTAL			835.0	1339	1339	392	2891	1590	6	3370	1	4207	1480	89	112	40	2785	12,336	999	740	8	2	2	3	6	661

SEC NO	STATION TO STATION	NET LENGTH OF CENTER LINE	METAL CONDUIT 2 INCH	TOPSOIL	FERTILIZER	SEEDING	FIELD OFFICE TYPE "A"	FIELD LABORATORY	CONCRETE SAFETY ISLAND SPECIAL	MOVE EXISTING TRAFFIC SIGNALS AND CONTROLLER	INSTALLING TRAFFIC SIGNALS AND INTERSECTION LIGHTING	SALVAGE CATCH BASIN COVERS	ERECTING STATE OWNED SIGNS	METAL CONDUIT 3 INCH	TRAFFIC CONTROL LINES	STATE FURNISHED MATERIALS
			ITEM NO	UNIT	L. F.	S. Y.	CWT.	S. Y.	L. S.	L. S.	EACH	L. S.	L. S.	EACH	L. S.	L. F.
	STA. 0 + 97 - STA. 9 + 32		827	1440	2	1440	1	1	4	1	1	5	1	6	1	1
PROJECT TOTAL			827	1440	2	1440	1	1	4	1	1	5	1	6	1	1

* CONTRACT NO. 1

DETAIL SUMMARY OF MISCELLANEOUS QUANTITIES

REMOVING CONCRETE SIDEWALK

CONCRETE DRIVEWAY 6"

LOC.	STA.	SIDE	S.Y.	LOC.	STA.	SIDE	S.Y.
West Ave.	1+62	Lt.	4.16	West Ave.	1+03	Lt.	17.33
"	4+03	Lt.	3.00	"	4+49	Lt.	6.33
SW cor., West Ave. & Main St.			17.66	"	8+10	Lt.	9.77
NW cor., West Ave. & Main St.			16.33	"	3+19	Lt.	12.22
6+91		Lt.	3.83	"	4+16	Rt.	6.00
7+24		Lt.	3.05	"	8+18	Rt.	6.66
8+47		Lt.	3.33	Main St.	3+03	Lt.	4.44
SW cor., West Ave. & State St.			14.00	"	2+36	Rt.	16.72
2+50-4+40		Lt.	126.66	"	6+41	Rt.	4.00
4+59-5+14.5		Lt.	37.00	"	6+58	Rt.	4.00
5+92.5-7+43.9		Lt.	100.93	"	7+20	Rt.	6.66
7+63.7-8+02		Lt.	25.23	"	7+29	Lt.	17.87
8+18-9+15		Lt.	64.66				
1+50-3+15.5		Rt.	110.33				
3+22.5-3+60		Rt.	25.00				
3+68-4+07		Rt.	26.00				
4+25-5+16.4		Rt.	60.93				
SE cor., West Ave. & Main St.			18.33				
1+36		Rt.	4.88				
2+02		Rt.	4.88				
2+25		Rt.	1.22				
2+61		Rt.	3.66				
2+79		Rt.	2.44				
3+06		Rt.	3.66				
3+40		Rt.	2.44				
3+80		Rt.	3.83				
4+60		Rt.	9.53				
NE cor., West Ave. & Main St.			18.00				
5+93.3-7+43.9		Rt.	100.40				
7+63.7-8+13.5		Rt.	33.20				
8+22.5-9+14.2		Rt.	61.13				
SE cor., West Ave. & State St.			17.33				
6+87		Rt.	10.41				
7+82		Rt.	4.16				
8+10		Rt.	4.86				
8+40		Rt.	4.86				
8+69		Rt.	4.86				
8+94		Rt.	4.16				
1+73		Lt.	4.72				
2+13		Lt.	2.87				
2+34		Lt.	4.66				
2+72		Lt.	2.83				
3+34		Lt.	2.83				
2+82		Lt.	2.83				
4+06		Lt.	2.66				
4+57		Lt.	2.66				
2+60-2+99		Lt.	26.00				
3+07-4+94.2		Lt.	124.80				
5+70.9-7+19		Lt.	98.73				
7+39-7+45		Lt.	4.00				
6+53		Lt.	6.00				
8+14		Lt.	4.75				
1+96		Rt.	3.00				
2+44.8-4+89.5		Rt.	163.13				
6+07		Rt.	3.77				
7+98		Rt.	4.50				
5+71.3-8+18		Rt.	164.46				

ADJUSTING MANHOLE COVERS

LOC.	STA.	SIDE	NO.
West Ave.	5+54	C.L.	1
"	5+68	40' Lt.	1
"	5+68	40' Rt.	1
"	5+94	6' Lt.	1
"	7+60	6' Lt.	1
"	9+12	5' Lt.	1

REINF. CONC. PIPE, CLASS III STORM SEWER, 12 IN.

LOC.	STA.	SIDE	L.F.
West Ave.	0+97-1+50	6' Lt.	53
"	1+50-5+20	6' Lt.	370
"	5+20-5+94		74
"	1+50	C.B. Conn.	43
"	5+03-5+98	"	126
"	9+24	"	74

CATCH BASINS

LOC.	STA.	SIDE	CATCH BASIN TYPE	COVER TYPE
West Ave.	1+50	Lt.	I	A
"	1+50	Rt.	I	A
"	5+04	Lt.	I	Salv.
"	5+04	Rt.	I	A
"	6+04	Lt.	I	Salv.
"	6+04	Rt.	I	Salv.
"	9+05	Lt.	I	Salv.
"	9+20	Rt.	I	Salv.

METAL CONDUIT

LOC.	STA.-STA.	SIDE	CONDUIT L.F.	CONDUIT L.F.
West Ave.	6+07-7+64	43'R	336	
	Intersection West Ave. & Main		325	
"	"	"	702	
"	"	"	125	
6+01-6+07		44'Rt.		6

I.D. NO.	PROJECT	SHEET NO.	TOTAL SHEETS
5991-1-02 03	T4140(2)	3-A	12

DETAIL SUMMARY OF MISCELLANEOUS QUANTITIES

REMOVING CURB & GUTTER

LOC.	STA. - STA.	SIDE	L.F.	LOC.	STA.	SIDE	MANHOLE TYPE	MANHOLE COVER TYPE
West Ave.	0+97-5+15	Lt.	418	West Ave.	1+50	6' Lt.	1	J
"	0+97-5+15	Rt.	418	West Ave.	5+20	6' Lt.	1	J
Intersection West Ave. & Main St. 4 radius	5+93-9+12	Lt.	110					
West Ave.	5+93-9+15	Rt.	319					
Intersection West Ave. & State 2 radius	5+93-9+15	Rt.	322					
Main St.	1+70-4+95.9	Lt.	82					
"	1+70-4+95.9	Rt.	326					
"	5+73-8+58	Lt.	285					
"	5+73-8+58	Rt.	285					

BIT. MATERIAL FOR SURFACE COURSE

LOC.	STA.	TONS
West Ave.	0+97-9+32	48.5
Main St.	1+70-4+86, 5+78-8+58	32.1
	Undis.	8.4

REMOVING PAVEMENT

Sta.	SIDE	S.Y.	LOC.	STA. - STA.	TONS
1+03	P.E.	25	West Ave.	0+97-9+32	809
4+49	P.E.	39	West Ave.	1+70-4+86, 5+78-8+58	535
7+53	Alley	40	Main St.	Undis.	136
8+10	P.E.	32			
3+19	P.E.	14			
3+64	P.E.	16			
4+16	P.E.	36			
7+53	Alley	42			
8+18	P.E.	19			
3+03	P.E.	13			
2+30	P.E.	37			
6+41	P.E.	15			
6+58	P.E.	14			
7+20	P.E.	16			
7+29	P.E.	34			

CRUSHED AGGREGATE BASE COURSE

LOC.	STA. - STA.	C.Y.
West Ave.	0+97-3+46	588.37
"	3+46-5+08	452.40
"	5+08-6+00	339.04
"	6+00-7+57	438.43
"	7+57-9+07	373.77
"	9+07-9+32	71.23
Main St.	1+75-4+86	840.00
"	5+78-8+58	721.00
	Undis.	382.76

CONC. CURB & GUTTER 30 IN. TYPE "D"

LOC.	STA. - STA.	SIDE	L.F.	LOC.	STA. - STA.	ISLAND
West Ave.	0+97-5+08	Lt.	411	West Ave.	2+18-5+17	A
"	0+97-5+08	Rt.	411	West Ave.	5+91-8+66	B
West Ave. & Main St. 4-15' rad.	West Ave. & Main St.		94	Main St.	2+14-4+92	C
6+00-9+07		Lt.	307	Main St.	5+68.9-8+02	D
6+00-9+07		Rt.	307			
West Ave. & State St. 2-20' rad.			62			
S. Side of State St. - East of Radius			14			
1+70 - 4+81.9		Lt.	312			
1+70-4+77.3		Rt.	307			
5+77.9 - 8+58		Lt.	280			
5+77.9 - 8+58		Rt.	280			

CLEARING & GRUBBING

LOC.	STA. - STA.	SIDE	IN. DIA. CLEARING	IN. DIA. GRUBBING
West Ave.	2+66-4+94	Lt.	181	181
"	1+72-5+12	Rt.	291	291
"	6+16-9+08	Lt.	185	185
"	6+13-8+24	Rt.	104	104
Main St.	2+91-4+54	Lt.	174	174
"	5+93-8+25	Lt.	138	138
"	2+48-4+58	Rt.	109	109
"	6+82-8+04	Rt.	157	157

ED NO	PROJECT	SHEET NO.	TOTAL SHEETS
5991-1-02 03	T4140(2)	3-B	12

DETAIL SUMMARY OF MISCELLANEOUS QUANTITIES

CONC. SIDEWALK 4"

LOC.	STA. - STA.	SIDE	S.F.
Main St.	1+62	Lt.	30.0
"	4+03	Lt.	25.50
"	6+91	Lt.	9.00
"	7+24	Lt.	7.50
"	8+47	Lt.	21.00
	1+36	Rt.	36.00
	2+02	Rt.	32.00
	2+25	Rt.	7.00
	2+61	Rt.	18.00
	2+79	Rt.	10.00
	3+06	Rt.	12.00
	3+40	Rt.	6.00
	3+80	Rt.	9.00
	4+60	Rt.	43.50
	6+87	Rt.	22.50
	7+82	Rt.	10.50
	8+10	Rt.	17.50
	8+40	Rt.	22.75
	8+69	Rt.	28.00
	8+94	Rt.	27.00
	2+50-4+40	Lt.	1140.00
	4+59-5+16	Lt.	342.00
	5+91-7+43.9	Lt.	918.00
	7+63.7-8+02	Lt.	229.80
	8+18-9+15	Lt.	582.00
	81.00		
	SW cor. -West Ave. & State Street		
	1+50-3+14	Rt.	984.00
	3+24-4+07	Rt.	498.00
	4+25-5+21	Rt.	576.00
	5+88-7+43.9	Rt.	935.40
	7+63.7-8+13	Rt.	295.80
	81.40		
	SE cor. -West Ave. & State Street		
West Ave.	1+73-	Lt.	42.50
	2+13	Lt.	23.00
	2+34	Lt.	34.00
	2+72	Lt.	15.00
	3+34	Lt.	7.50
	3+82	Lt.	7.50
	4+06	Lt.	7.50
	4+57	Lt.	7.50
	6+53	Lt.	15.00
	8+14	Lt.	44.75
	1+96	Rt.	25.50
	6+07	Rt.	10.00
	7+98	Rt.	31.50
	2+60-3+08	Rt.	288.00
	3+18-4+91.9	Lt.	1043.40
	2+46-4+89.5	Rt.	1460.00
	5+71.9-7+19	Lt.	882.60
	7+39-7+45	Lt.	36.00
	5+71.9-6+36	Rt.	384.60
	6+46-6+58	Rt.	42.00
	6+63-7+15	Rt.	312.00
	7+25-8+18	Rt.	558.00

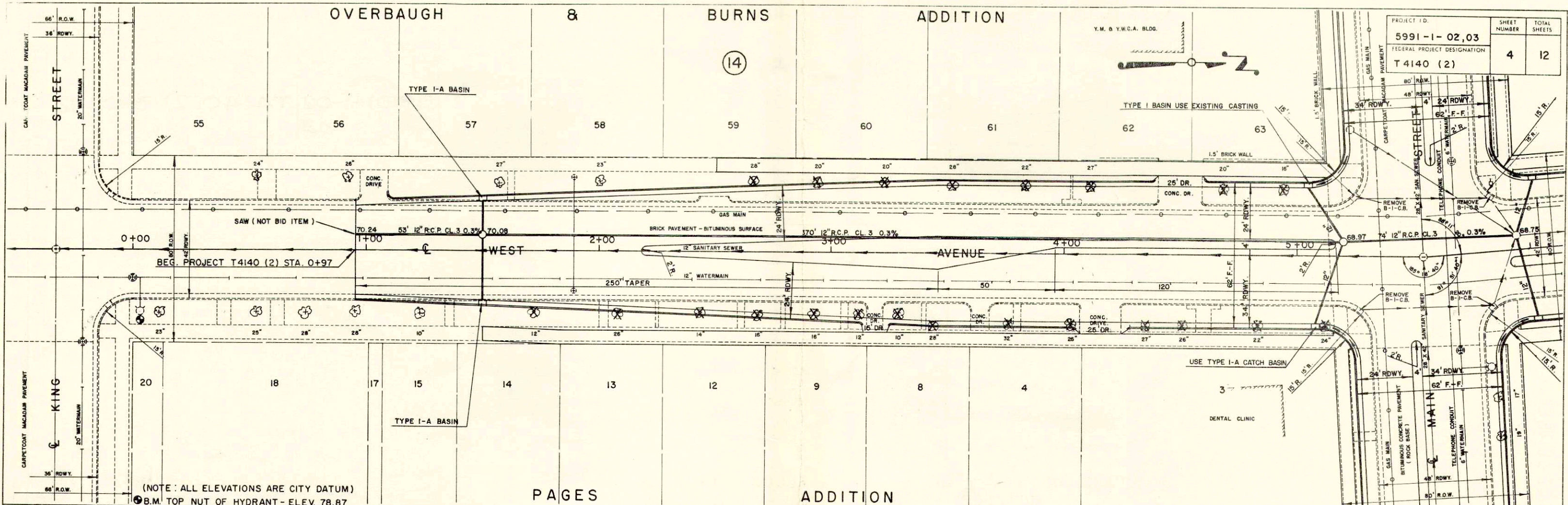
CONC. SIDEWALK 6"

LOC.	STA. - STA.	SIDE	S.F.
Main St.	0+97-1+09	Lt.	72.00
	4+40-4+59	Lt.	114.00
	3+14-3+24	Rt.	60.00
	4+07-4+25	Rt.	108.00
	8+02-8+18	Lt.	96.00
	8+13-8+26	Rt.	60.00
	3+08-3+18	Lt.	60.00
	2+25.25-2+46.75	Rt.	129.00
	6+36-6+46	Rt.	60.00
	6+53-6+63	Rt.	60.00
	7+15-7+25	Rt.	60.00
	7+19-7+39	Lt.	120.00
West Ave.			

ID. NO.	PROJECT	SHEET NO.	TOTAL SHEETS
5991-1-02 03	T4140(2)	3-C	12

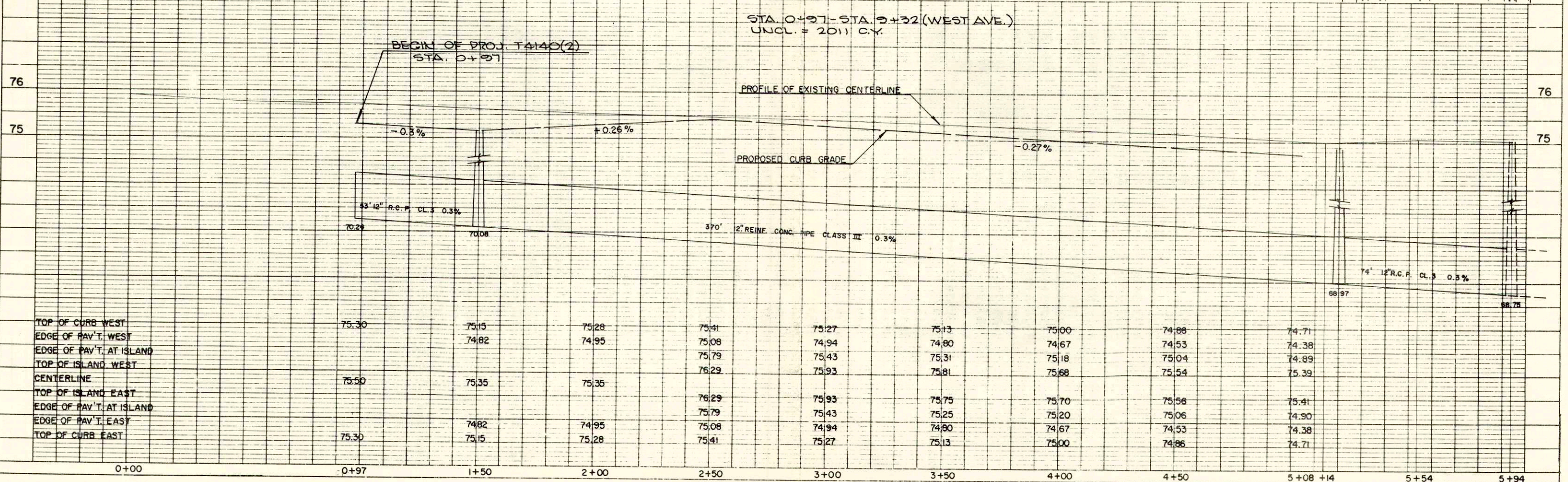
OVERBAUGH & BURNS ADDITION

PROJECT ID:	5991-1-02,03	SHEET NUMBER:	4	TOTAL SHEETS:	12
FEDERAL PROJECT DESIGNATION:	T 4140 (2)				

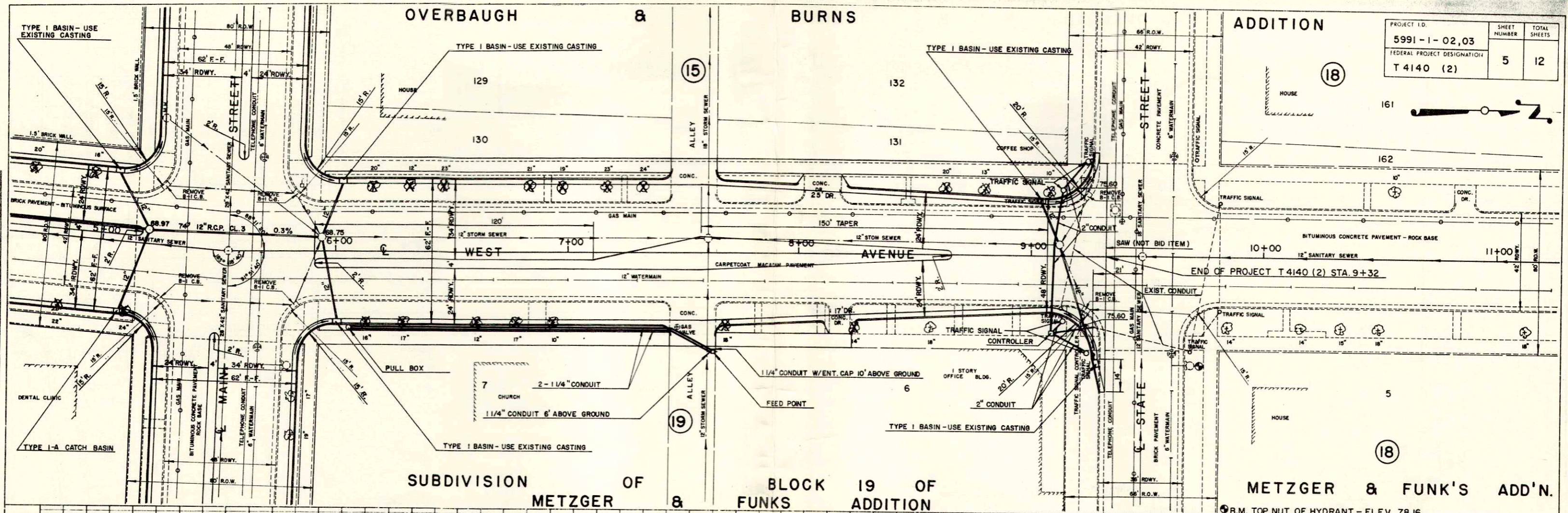


(NOTE: ALL ELEVATIONS ARE CITY DATUM)
 B.M. TOP NUT OF HYDRANT - ELEV. 78.87

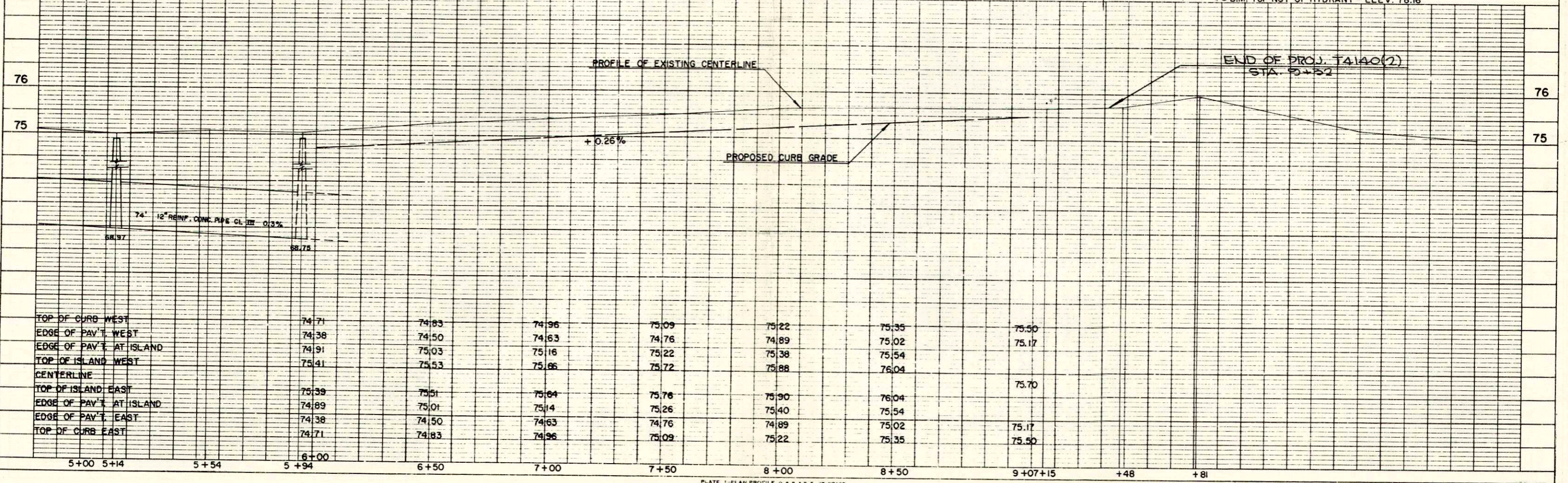
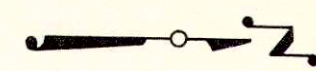
PAGES ADDITION



TOP OF CURB WEST	75.30	75.15	75.28	75.41	75.27	75.13	75.00	74.88	74.71
EDGE OF PAV'T. WEST		74.82	74.95	75.08	74.94	74.80	74.67	74.53	74.38
EDGE OF PAV'T. AT ISLAND				75.79	75.43	75.18	75.04	75.04	74.89
TOP OF ISLAND WEST				76.29	75.93	75.81	75.68	75.54	75.39
CENTERLINE	75.50	75.35	75.35						
TOP OF ISLAND EAST				76.29	75.93	75.75	75.70	75.56	75.41
EDGE OF PAV'T. AT ISLAND				75.79	75.43	75.25	75.20	75.06	74.90
EDGE OF PAV'T. EAST		74.82	74.95	75.08	74.94	74.80	74.67	74.53	74.38
TOP OF CURB EAST	75.30	75.15	75.28	75.41	75.27	75.13	75.00	74.86	74.71



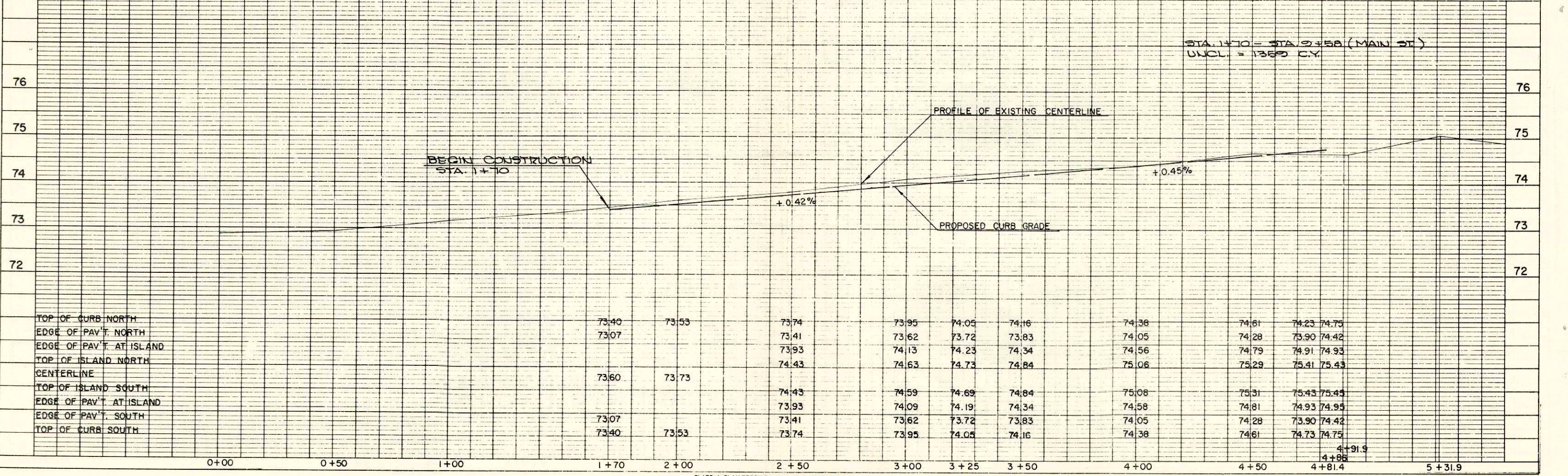
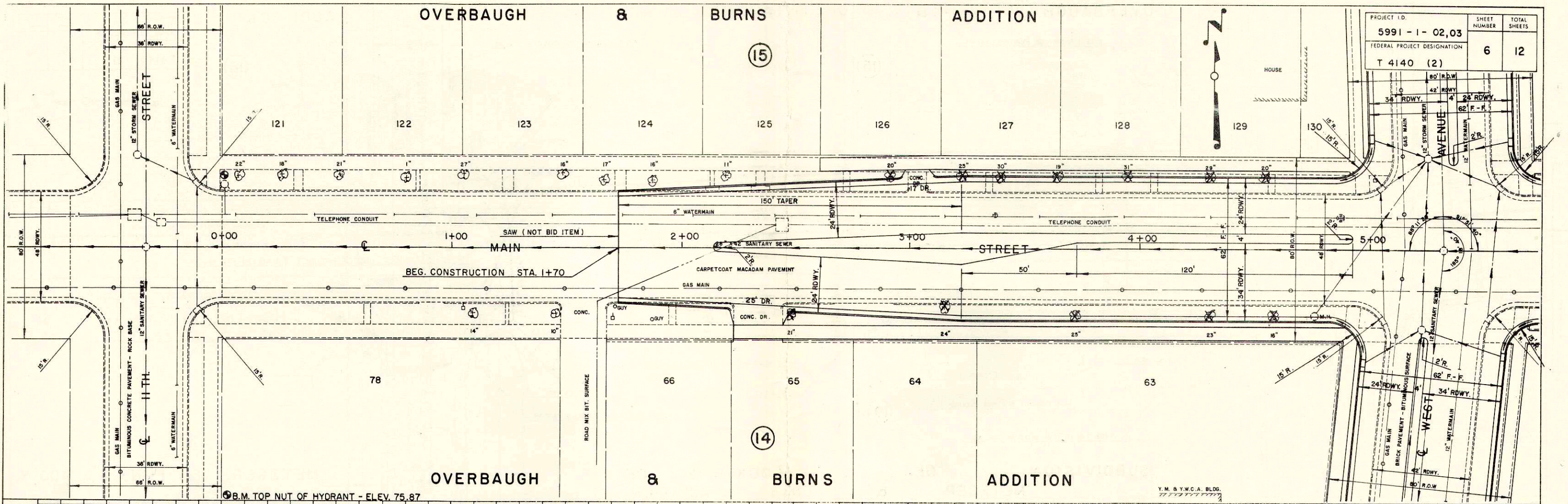
PROJECT I.D.	SHEET NUMBER	TOTAL SHEETS
5991-1-02,03	5	12
FEDERAL PROJECT DESIGNATION		
T 4140 (2)		



OVERBAUGH & BURNS ADDITION

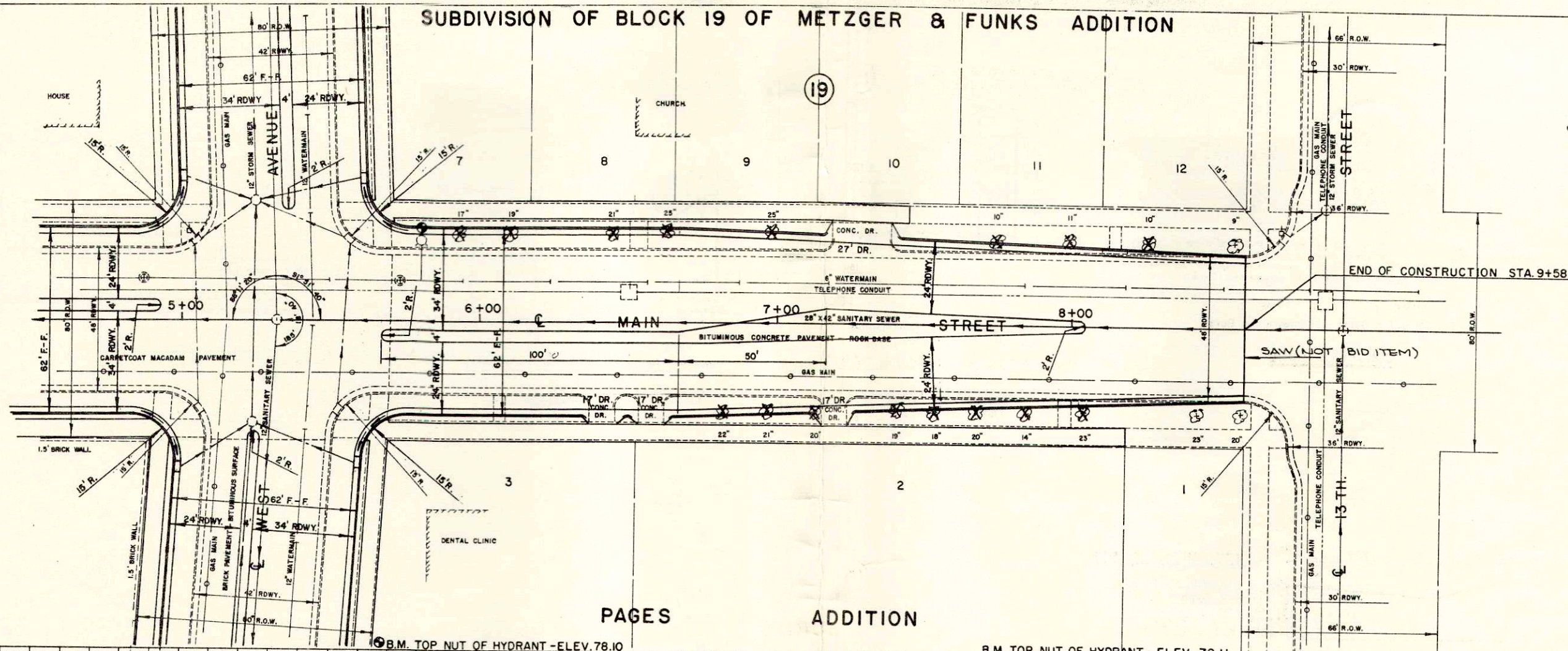
15

PROJECT I.D.	SHEET NUMBER	TOTAL SHEETS
5991 - 1 - 02,03	6	12
FEDERAL PROJECT DESIGNATION		
T 4140 (2)		

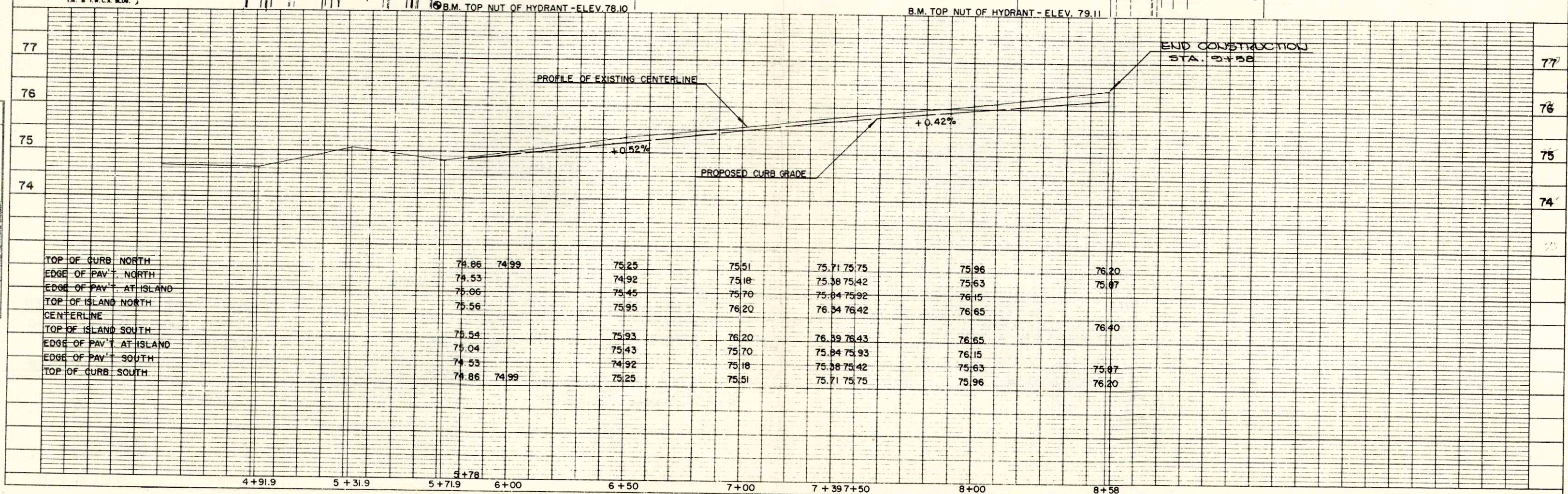


SUBDIVISION OF BLOCK 19 OF METZGER & FUNKS ADDITION

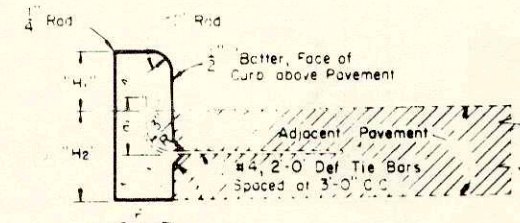
PROJECT I.D.	SHEET NUMBER	TOTAL SHEETS
5991-1-02,03	7	12
FEDERAL PROJECT DESIGNATION		
T 4140 (2)		



PAGES ADDITION



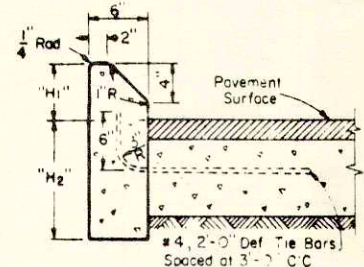
TOP OF CURB NORTH	74.86	74.99	75.25	75.51	75.71 75.75	75.96	76.20
EDGE OF PAV'T. NORTH	74.53		74.92	75.18	75.38 75.42	75.63	75.87
EDGE OF PAV'T. AT ISLAND	75.06		75.45	75.70	75.84 75.92	76.15	
TOP OF ISLAND NORTH	75.56		75.95	76.20	76.34 76.42	76.65	
CENTERLINE							
TOP OF ISLAND SOUTH	75.54		75.93	76.20	76.39 76.43	76.65	76.40
EDGE OF PAV'T. SOUTH	75.04		75.43	75.70	75.84 75.93	76.15	
EDGE OF PAV'T. SOUTH	74.53		74.92	75.18	75.38 75.42	75.63	75.87
TOP OF CURB SOUTH	74.86	74.99	75.25	75.51	75.71 75.75	75.96	76.20



Tie Bar recess positioned in reverse when Concrete Curb is constructed first
 H₁ = 9" max and 3 1/2" min, and shall be 6" unless otherwise shown on the plans
 H₂ = Same as adjacent pavement thickness for rigid pavement and 12" for other than rigid pavement (Tie Bars Omitted)

TYPE "A" (Including Tie Bars) TYPE "D" (Excluding Tie Bars)

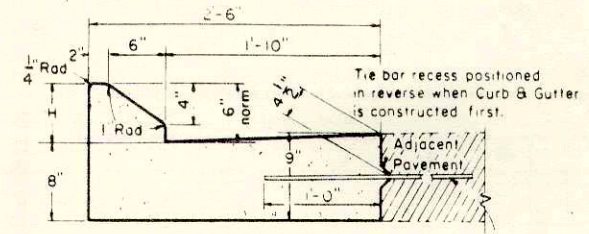
CONCRETE CURB



H₁ = 9" Max and 4" min and shall be 6" unless otherwise shown on plans
 H₂ = Same as adjacent pavement thickness for rigid pavement and 12" for other than rigid pavement (Tie Bars Omitted)

TYPE "G" (Including Tie Bars) TYPE "J" (Excluding Tie Bars)

CONCRETE CURB (Mountable Type)



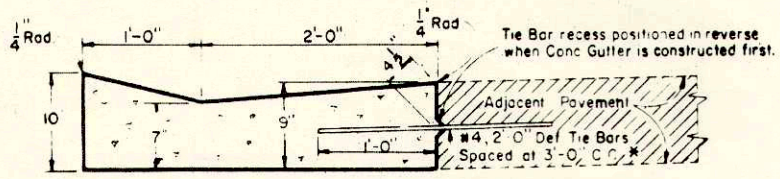
H₁ = 9" max and 4" min & shall be 6" unless otherwise shown on the plans
 #4, 2'-0" Def Tie Bars or alternate Bolt Type install, may be used, spaced at 3'-0" C.C.

TYPE "G" (Including Tie Bars) TYPE "J" (Excluding Tie Bars)

CONCRETE CURB AND GUTTER (Mountable Type)

GENERAL NOTES

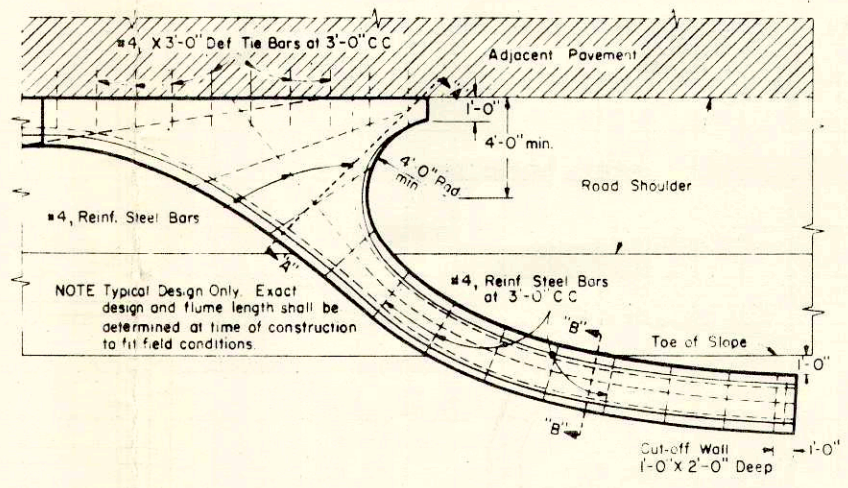
Details of construction and materials not shown on this drawing shall conform to the pertinent requirements of the Standard Specifications and the applicable Special Provisions.
JOINTS - Joints shall not be sealed in concrete curb, concrete gutter, concrete curb and gutter, or concrete surface drains.



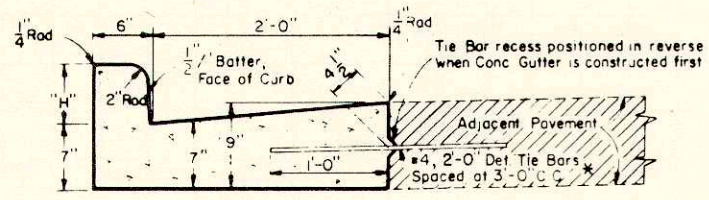
* Alternate Tie Bars or Bolt Type installations may be used as shown for Longitudinal Joints.
 Tie Bar recess positioned in reverse when Conc Gutter is constructed first.

TYPE "A" (Including Tie Bars) TYPE "D" (Excluding Tie Bars)

CONCRETE GUTTER



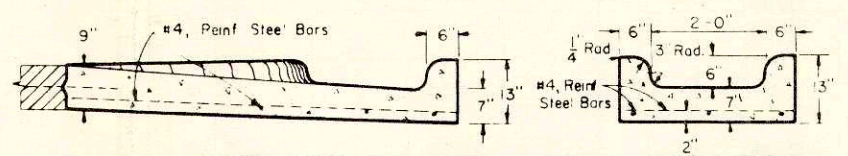
NOTE Typical Design Only. Exact design and flume length shall be determined at time of construction to fit field conditions.



H₁ = 9" Max, 3 1/2" Min, and shall be 6" unless otherwise shown on the plans
 * Alternate Tie Bars or Bolt Type installations may be used as shown for Longitudinal Joints

TYPE "A" (Including Tie Bars) TYPE "D" (Excluding Tie Bars)

CONCRETE CURB AND GUTTER (Barrier Type)



SECTION "A-A"

SECTION "B-B"

CONCRETE INLET OR DISCHARGE FOR CURB AND GUTTER SURFACE DRAIN

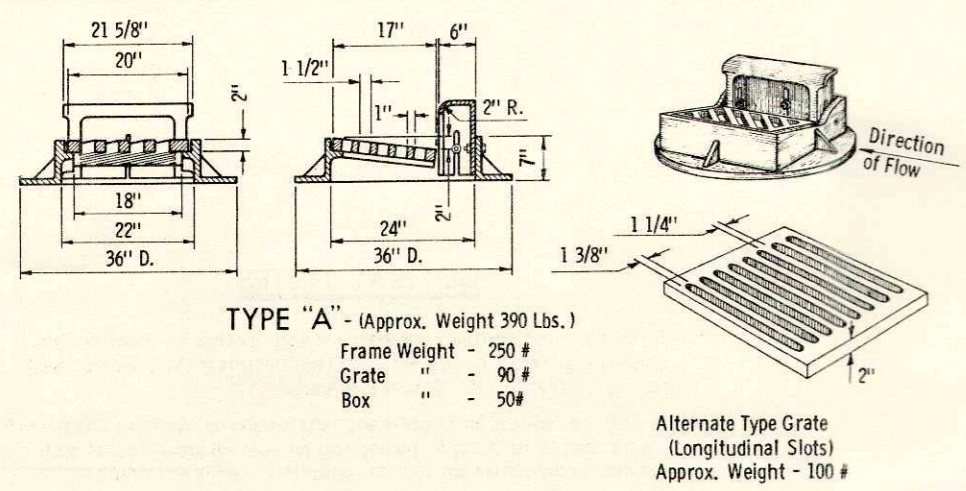
**CONCRETE CURB, CONCRETE GUTTER
 CONCRETE CURB AND GUTTER AND
 CONCRETE SURFACE DRAINS**

STATE HIGHWAY COMMISSION OF WISCONSIN

RECOMMENDED FOR APPROVAL
 DATE 2-5-63
 APPROVED: J. S. Palf ENGINEER OF DESIGN
 DATE 2/4/63
 E. C. Rottler STATE HIGHWAY ENGINEER

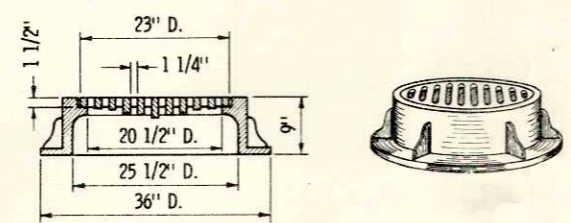
GENERAL NOTES

1. Details of construction, materials and workmanship not shown on this drawing shall conform to the pertinent requirements of the Standard Specifications and the applicable Special Provisions.
2. Detailed drawings for proposed alternate designs for Catch Basins or Catch Basin Covers shall be submitted to the Engineer for approval providing that such alternate designs make provision for equivalent capacity and strength.
3. All Catch Basins are designated on the Plans as "Catch Basins, 1-C", 1-G, etc. This designation is interpreted to mean that the number, or first digit designates the masonry portion of the structure, and the following letter designates the type of cover or iron casting to be used therewith to comprise the complete unit "Catch Basin" in place.
4. All bar steel reinforcement shall be embedded 2 inches clear.
5. Precast Reinforced Bases may be used in lieu of cast-in-place bases. When Precast Bases are used, they shall be placed on a bed of material at least 6 inches in depth, which meets the requirements for Granular Backfill. This bedding material shall be compacted and provide uniform support for the entire area of the base.
6. All Precast Reinforced Concrete Risers, Grade Rings, and Flat Slab Tops shall conform to AASHTO Designation M 199. Precast Reinforced Concrete Bases shall conform to the Flat Slab Top requirements of AASHTO Designation M 199.
7. Adjustment of the cover to grade may be accomplished by the use of mortar and brick, or by a Precast Reinforced Concrete Grade Ring. Maximum adjustment shall be 8 inches.
8. Alternate Precast Reinforced Concrete Cone Tops (Eccentric or Concentric) may be used on brick, concrete or concrete block Catch Basins. Attachment of the Precast Reinforced Concrete Cone Top shall be made on a bed of mortar.
9. Eccentric Cone Tops may be used on all Catch Basins, and Concentric Cone Tops shall be used only on Catch Basins 5 feet or less in depth, unless otherwise directed by the Engineer.
10. Precast Reinforced Concrete Risers may be placed with tongue or "D" joint ends either up or down.
11. Steps shall be installed in all Catch Basins over 5 feet in depth. Steps shall be installed 5 inches clear from wall at the center of the step. Steps shall conform to the requirements of the Standard Specifications for Gray Iron Castings, ASTM Designation A48. Steps shall have a minimum width of 9 inches out to out of casting.
12. All Catch Basin and Inlet frames and grates which are placed in vehicular traffic areas shall be "Non-Rocking" type, so as to prevent all cover noise under traffic.
13. Curb Box height to be adjustable 4 - 9 inches unless otherwise noted. Curb box height to be adjusted after curb form is in place.
14. Strike all joints for brick or block construction.



TYPE "A" - (Approx. Weight 390 Lbs.)
 Frame Weight - 250 #
 Grate " - 90 #
 Box " - 50 #

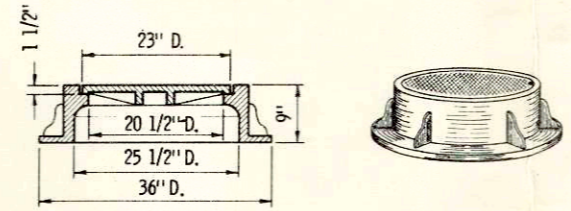
Alternate Type Grate
 (Longitudinal Slots)
 Approx. Weight - 100 #



TYPE "C" - (Approx. Weight 370 Lbs.)
 Frame Weight Type "C" & Type "D" - 255 #
 Slotted Grate Weight - 115 #
 Solid Cover Weight - 150 #
 (Note: Frame for Type "C" same as for Type "D")

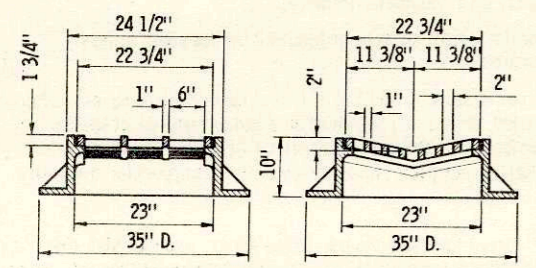
SPECIAL NOTE
 Diagonal Slots shall be oriented to the direction of flow as shown hereon. Hence RIGHT and LEFT Grates shall be furnished depending on direction of flow. (See Sketch Below)

Longitudinal slot type grates may be used ONLY where bicycles are prohibited.

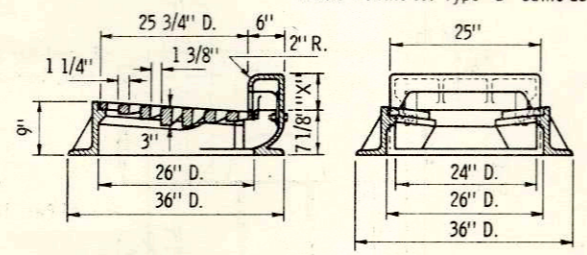
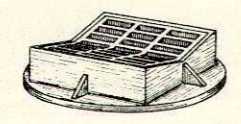


TYPE "D" - (Approx. Weight 405 Lbs.)
 (Note: Frame for Type "D" same as for Type "C")

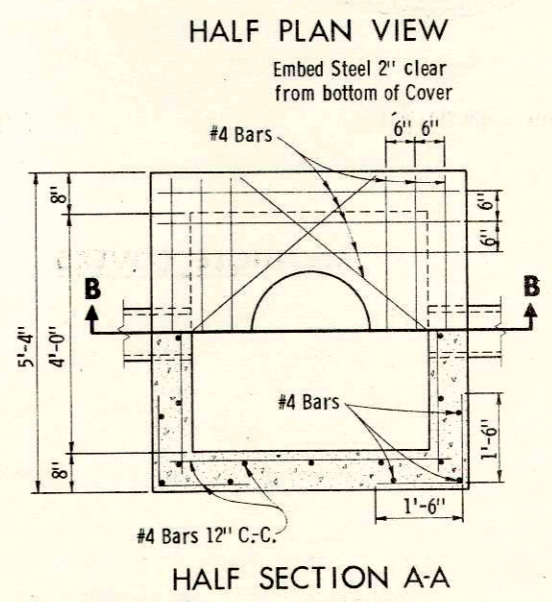
Curb Height	(X)	Weight
4"	4 1/4"	60 #
6"	6 1/4"	70 #
8"	8 1/4"	90 #
10"	10 1/4"	100 #



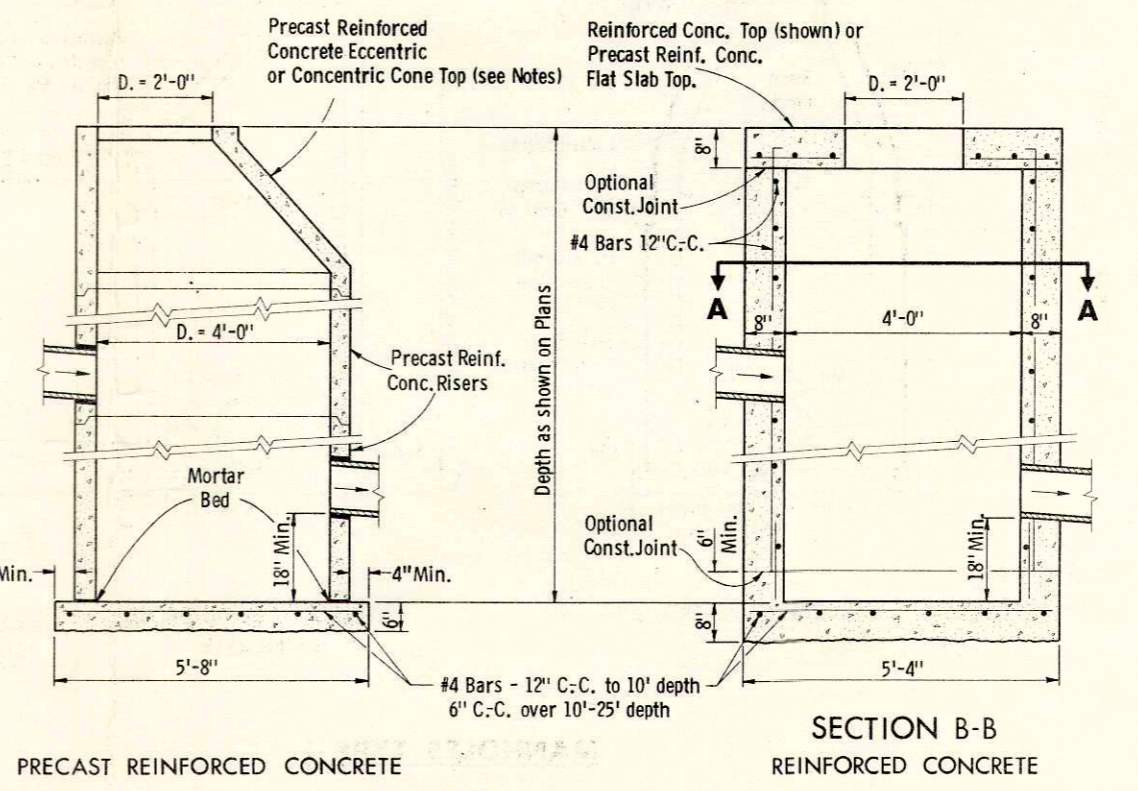
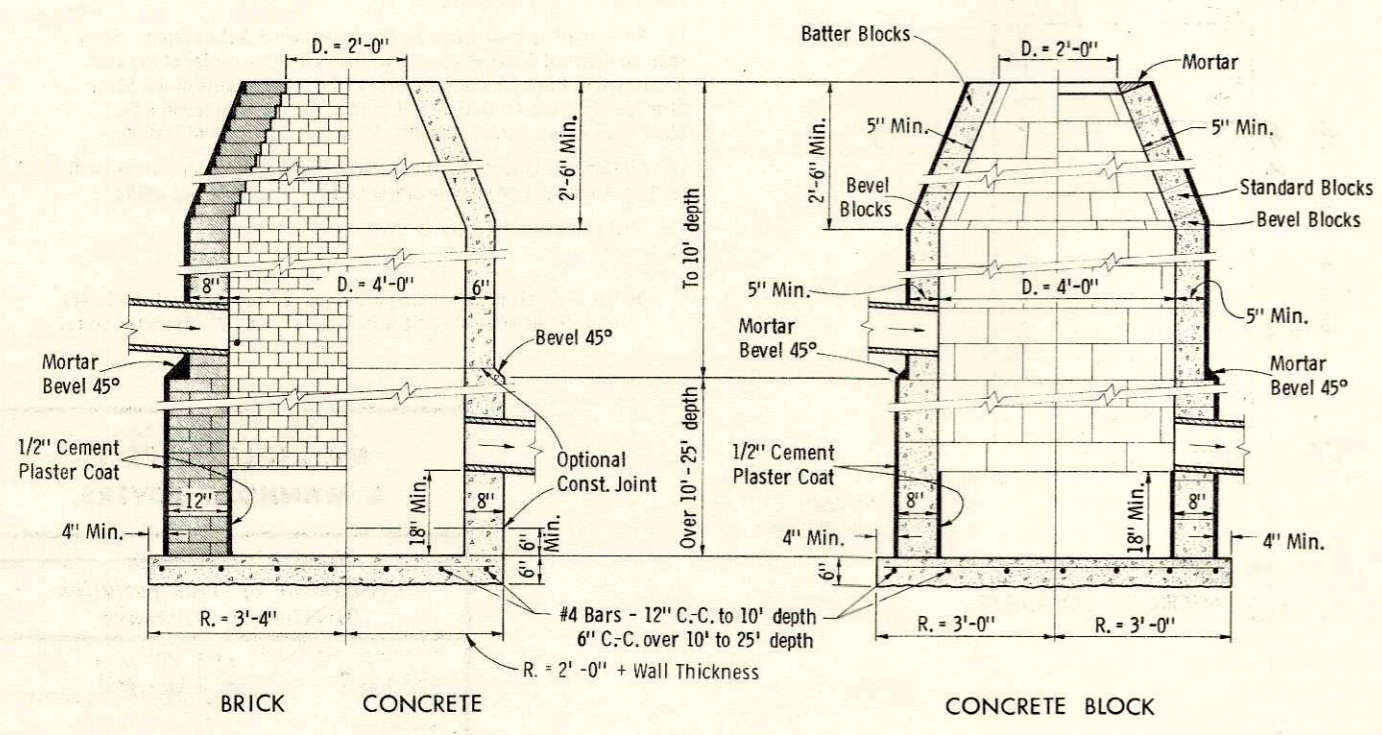
TYPE "B" - (Approx. Weight 414 Lbs.)
 Frame Weight - 275 #
 Grate " - 139 #



TYPE "G" - (Approx. Weight 425 - 465 Lbs.)
 Frame Weight - 235 #
 Grate " - 130 #
 Box - See Table



CATCH BASIN COVERS



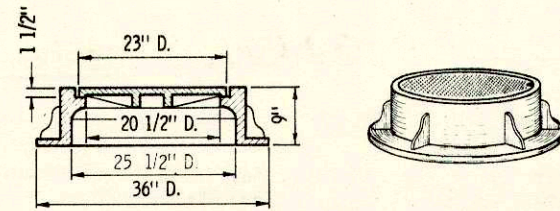
CATCH BASINS TYPE 1

**CATCH BASINS TYPE 1
 & CATCH BASIN COVERS**

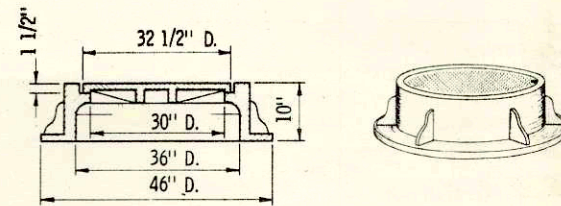
State of Wisconsin
 Department of Transportation
 Division of Highways

RECOMMENDED FOR APPROVAL:
 DATE 4/25/69
 APPROVED:
 DATE 4/25/69

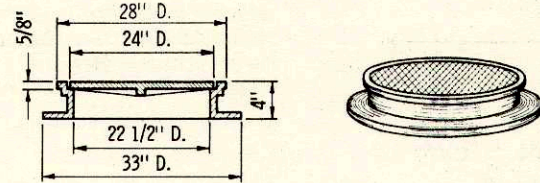
Plate No. 5-5.1.1



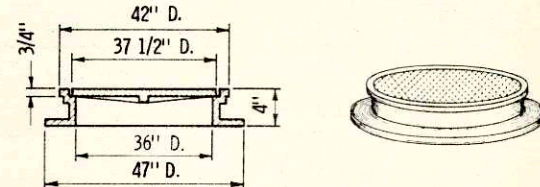
TYPE "J" (Approximate Weight 400 Lbs.)



TYPE "K" (Approximate Weight 750 Lbs.)

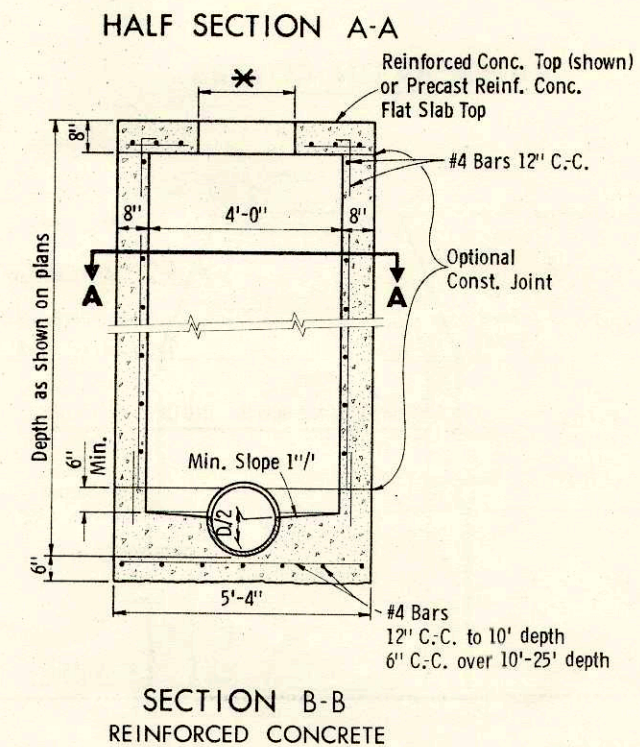
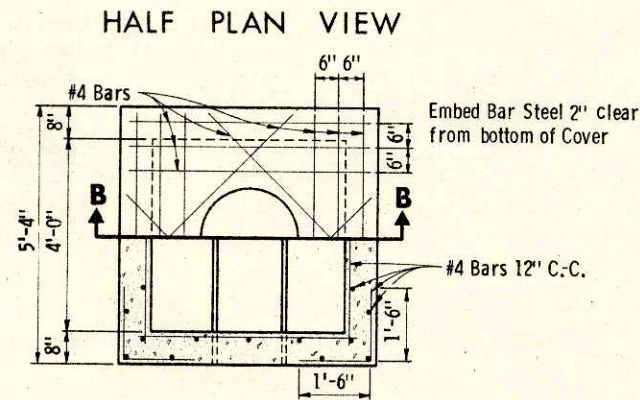
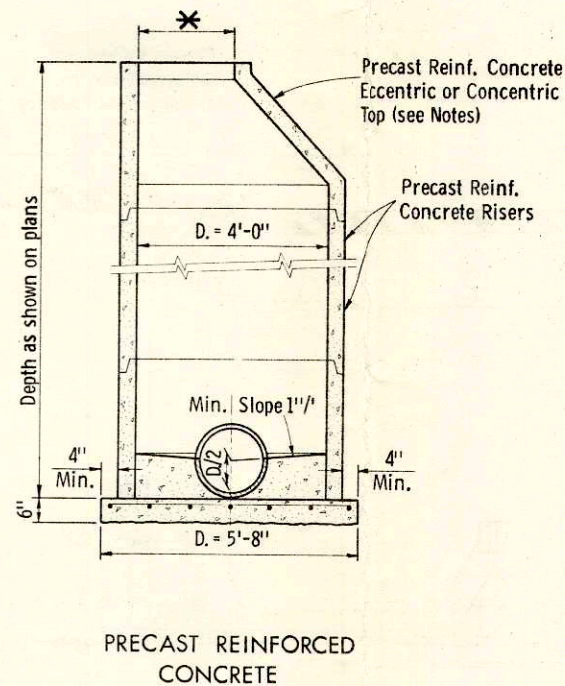
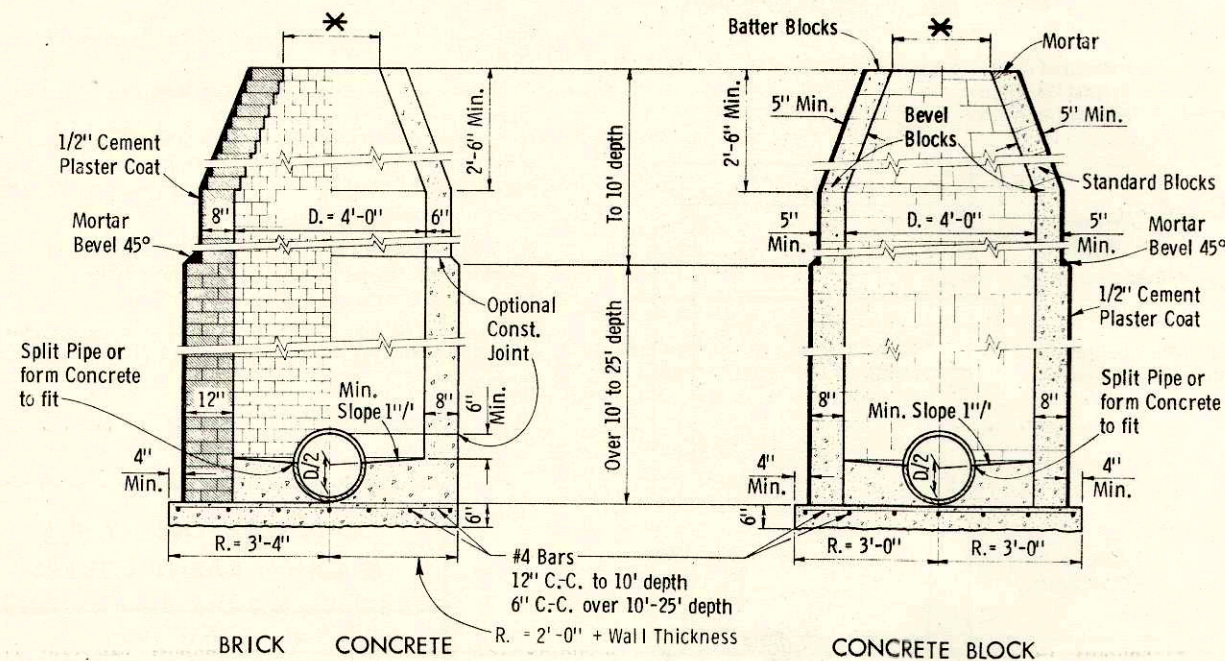


TYPE "L" (Approximate Weight 210 Lbs.)



TYPE "M" (Approximate Weight 475 Lbs.)

MANHOLE COVERS



MANHOLES TYPE 1

GENERAL NOTES

1. Details of construction, materials and workmanship not shown on this drawing shall conform to the pertinent requirements of the Standard Specifications and the applicable Special Provisions.
2. Detailed drawings for proposed alternate designs for Manholes and Manhole Covers shall be submitted to the Engineer for approval providing that such alternate designs make provision for equivalent capacity and strength.
3. All Manholes are designated on the Plans as "Manholes, 1-J", 1-L, etc. This designation is interpreted to mean that the number, or first digit, designates the masonry portion of the structure, and the following letter, designates the type of cover or iron casting to be used therewith to comprise the complete unit "Manhole" in place.
4. All bar steel reinforcement shall be embedded 2 inches clear unless otherwise shown or noted.
5. Precast Reinforced Bases may be used in lieu of cast-in-place bases. When Precast Bases are used, they shall be placed on a bed of material at least 6 inches in depth, which meets the requirements for Granular Backfill. This bedding material shall be compacted and provide uniform support for the entire area of the base.
6. All Precast Reinforced Concrete Risers, Grade Rings, and Flat Slab Tops shall conform to AASHTO Designation M 199. Precast Reinforced Concrete Bases shall conform to the Flat Slab Top requirements of AASHTO Designation M 199.
7. Adjustment of the cover to grade may be accomplished by the use of mortar and brick or by a Precast Reinforced Concrete Grade Ring. Maximum adjustment shall be 8 inches.
8. Alternate Precast Reinforced Concrete Cone Tops (Eccentric or Concentric) may be used on brick, concrete, or concrete block Manholes. Attachment of the Precast Reinforced Concrete Cone Top shall be made on a bed of mortar.
9. Eccentric Cone Tops may be used on all Manholes, and Concentric Cone Tops shall be used only on Manholes 5 feet or less in depth, unless otherwise directed by the Engineer.
10. Precast Reinforced Concrete Risers may be placed with tongue or "D" joint ends either up or down.
11. Steps shall be installed in all Manholes over 5 feet in depth. Steps shall be installed 5 inches clear from the wall at the center of the step. Steps used in the work shall conform to the requirements of the Standard Specifications for Gray Iron Castings, ASTM Designation A48. Steps shall have a minimum width of 9 inches out to out of casting.
12. All Manhole Covers which are placed in vehicular traffic areas shall be "Non-Rocking" type so as to prevent all cover noise under traffic.
13. Strike all joints for brick or block construction.

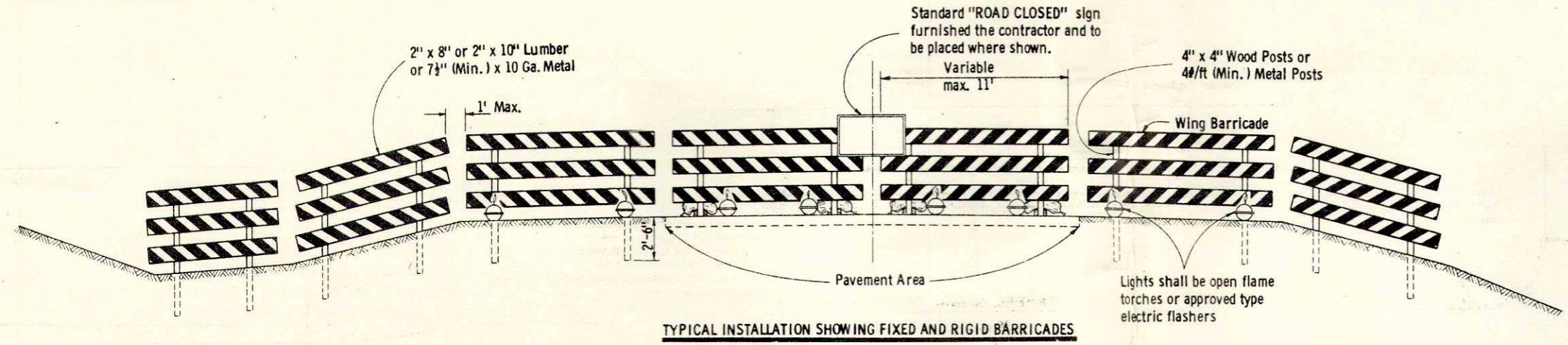
* Use 2'-0" diameter opening with Type "J" and "L" Manhole Covers, or 3'-0" diameter opening with Type "K" and "M" Manhole Covers.

MANHOLES TYPE 1 & MANHOLE COVERS

State of Wisconsin
Department of Transportation
Division of Highways

RECOMMENDED FOR APPROVAL:
DATE 4/25/69
APPROVED: DATE 4/25/69

GENERAL NOTES



TYPICAL INSTALLATION SHOWING FIXED AND RIGID BARRICADES

The contractor shall construct, place and maintain barricades as shown on the drawing and as required by the Standard Specifications or applicable Special Provisions.

CLASS 1 BARRICADE:

Class 1 Barricades shall be of variable length as indicated, and long barricades shall be assembled from these units. The Class 1 Barricade is the type normally required for major operations, where the barricade will remain in place for extended periods. Class 1 Barricades shall be used at points where the road is closed to traffic. Gates or movable sections of a barricade shall be provided when necessary, for access of equipment or other authorized vehicles. Wing Barricades are Class 1 Barricades erected on the shoulder on one or both sides of the pavement to give Traffic the perceptive effect of a narrowing or restricted roadway. The ends closest to traffic of all three members of a wing barricade shall be in a vertical line. If used in a series, they should start at the outer edge of the shoulder and be brought progressively closer to the pavement. Wing Barricades may be used as a mounting for the advance warning or guide signs or for flashers. When used on two-way roadways, the back of the wing barricade shall be painted reflectorized white.

CLASS 11 BARRICADE:

Class 11 Barricades may be used only where the hazard to traffic is relatively small, and for the more or less continuous delimiting of a restricted roadway, or for temporary daytime use.

MATERIAL & FABRICATION:

Lumber shall be of a grade structurally sound and sufficiently rigid to satisfactorily support and maintain the purpose and intent of a barricade facility. Metal shall be sufficiently rigid to satisfactorily support and maintain the purpose and intent of a barricade facility. The fabrication of the barricade shall be in accord with good pertinent woodworking and metalworking practices. All lumber or timber dimensions stated are nominal.

PAINTING:

All barricades shall be painted in alternate 4" or 6" black and white stripes at a 45° angle. The width of stripe shall be consistent for each complete barricade installation. Black stripes shall be painted with weather resistant and durable black paint. White stripes shall be primed, followed by two coats of white reflectorized paint or reflective wide angle sheeting.

DIRECTION OF DIAGONAL STRIPES:

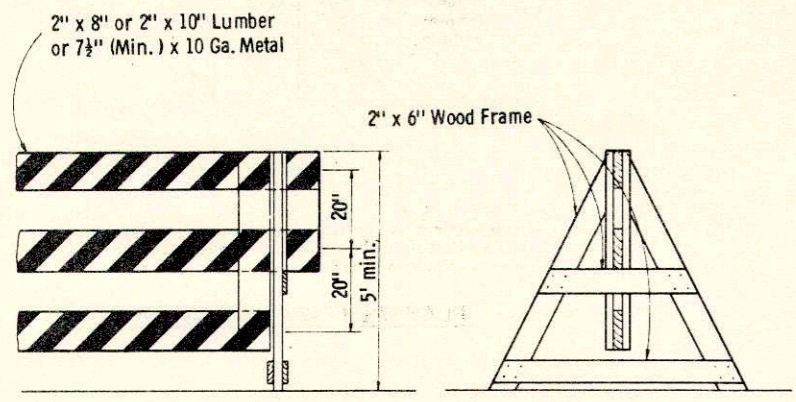
Where a barricade extends entirely across the roadway with no vehicle access provision, the stripes shall slope downward toward the highway centerline. Where vehicle access is permitted, the stripes shall slope downward in the direction toward which vehicles must turn in detouring. Where both right and left turns are provided for, the stripes shall slope downward in both directions from the center. The stripes on wing barricades shall point downward toward the roadway.

LIGHTING:

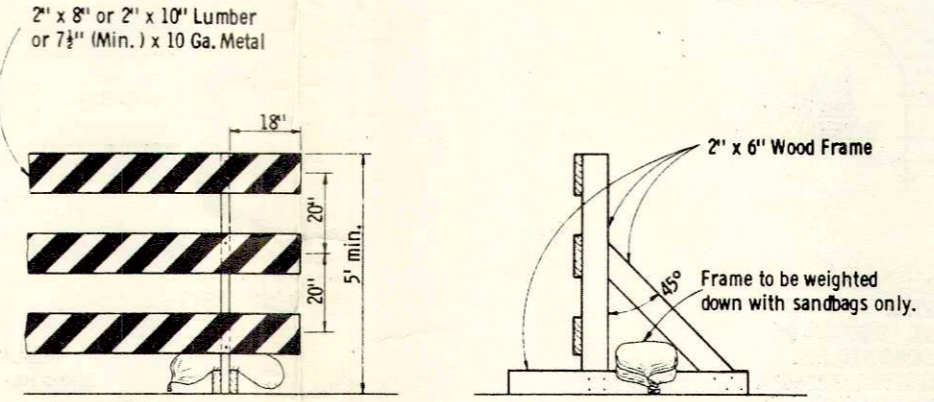
Lighting devices for barricades shall conform to the requirements of the Standard Specifications.

MEASUREMENT & PAYMENT:

All barricades, unless otherwise provided for in the plans and/or special provisions shall be furnished, placed, and maintained as noted above, and no additional compensation will be allowed but shall be construed to be included in the price bid for other items.

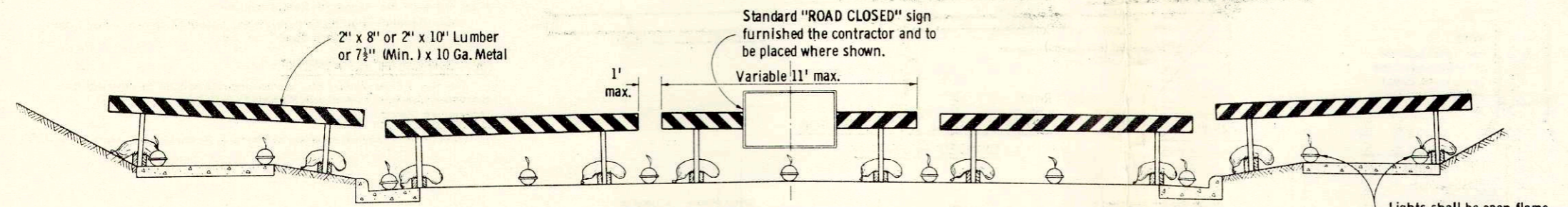


ALTERNATE TYPE INSTALLATION (DEMOUNTABLE)

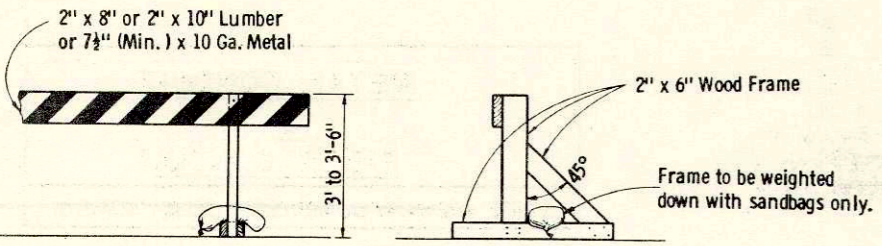


ALTERNATE TYPE INSTALLATION (RIGID)

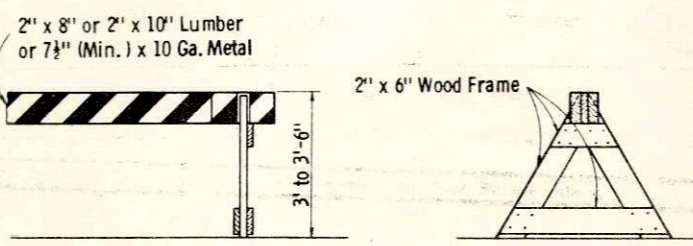
CLASS I BARRICADES



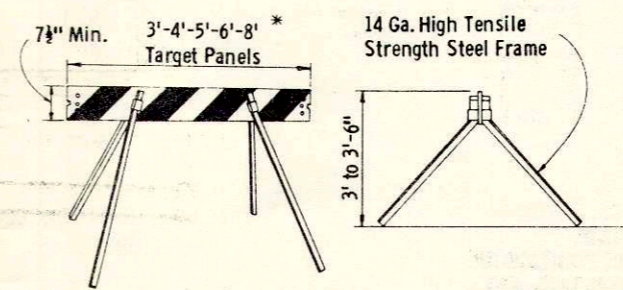
TYPICAL INSTALLATION SHOWING RIGID BARRICADES



ALTERNATE TYPE INSTALLATION (RIGID)

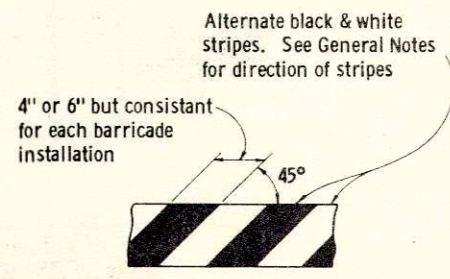


ALTERNATE TYPE INSTALLATION (DEMOUNTABLE)



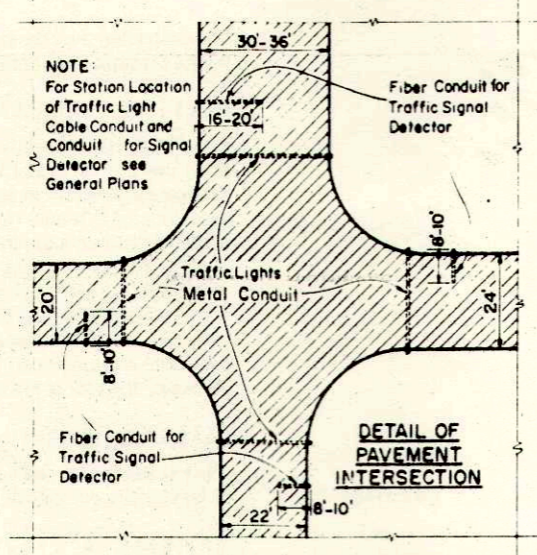
ALTERNATE TYPE INSTALLATION (DEMOUNTABLE)

CLASS II BARRICADES

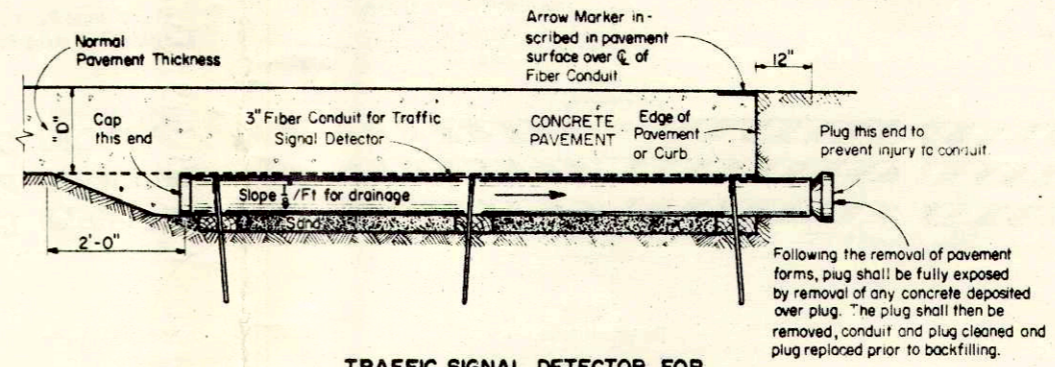


TYPICAL DIAGONAL STRIPES
Applies to all Classes & Types of Barricades

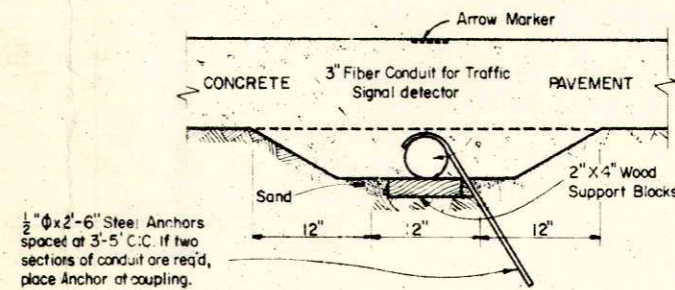
CONSTRUCTION BARRICADE	
State Highway Commission of Wisconsin	
RECOMMENDED FOR APPROVAL:	
DATE: 1/11/67	<i>E.J. Rydzek</i> CHIEF DESIGN ENGINEER
APPROVED:	
DATE: 1/13/67	<i>W.F. Dummitt</i> STATE HIGHWAY ENGINEER



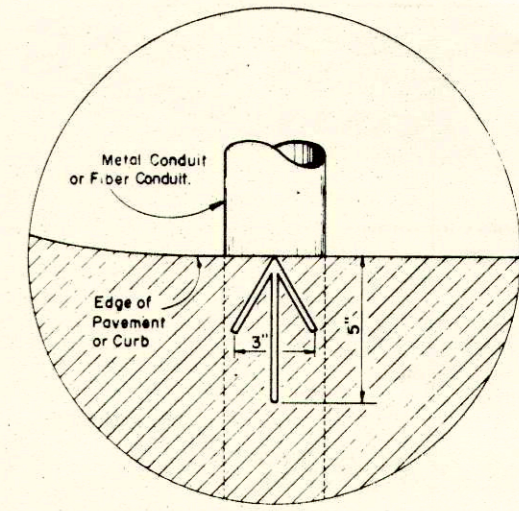
PLAN VIEW
SHOWING RELATIVE POSITION OF
TRAFFIC LIGHT CONDUITS AND
TRAFFIC SIGNAL DETECTOR CONDUITS
AT UNDIVIDED HIGHWAY INTERSECTIONS



TRAFFIC SIGNAL DETECTOR FOR UNDIVIDED HIGHWAYS

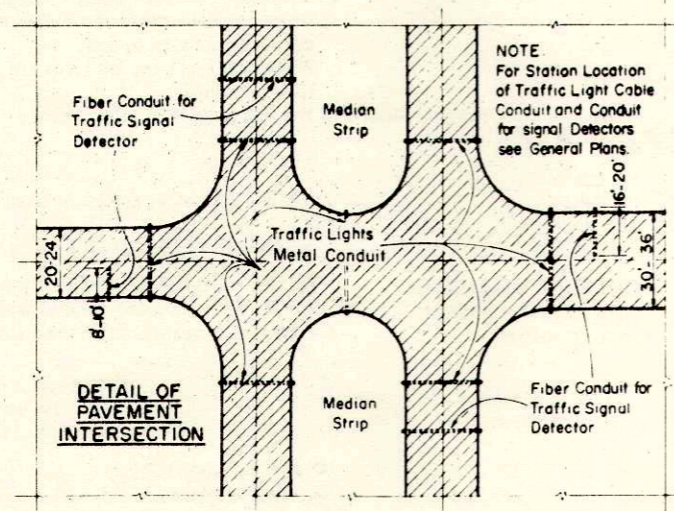


SIDE & END ELEVATIONS
SHOWING PLACEMENT DETAILS
FOR TRAFFIC SIGNAL DETECTOR CONDUIT

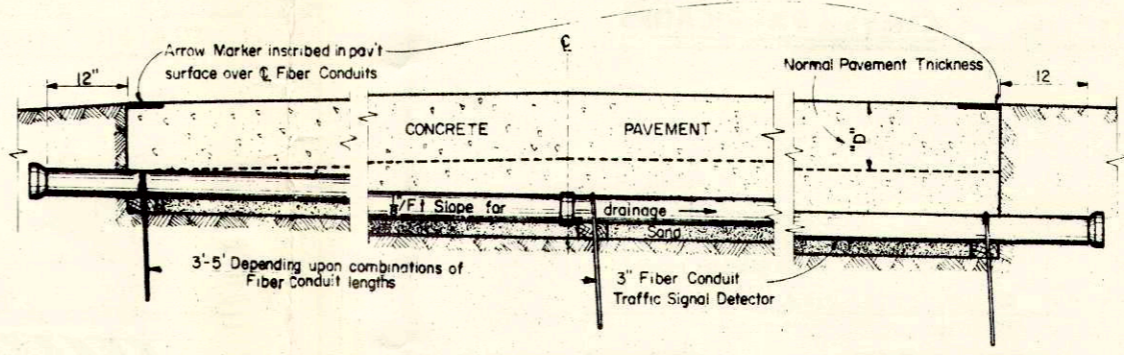


Arrow Marker to be inscribed in fresh concrete and/or bituminous surfacing 1/4 to 3/8 deep at each location where pipe conduit or fiber conduit are placed under rigid surfacing.

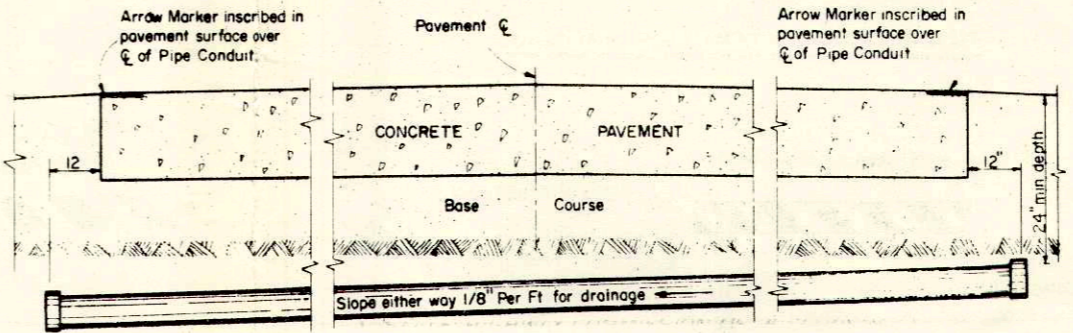
PLAN VIEW - ARROW MARKER



PLAN VIEW
SHOWING RELATIVE POSITION OF
TRAFFIC LIGHT CONDUITS AND
TRAFFIC SIGNAL DETECTOR CONDUITS
AT DIVIDED HIGHWAY INTERSECTIONS



TRAFFIC SIGNAL DETECTOR FOR DIVIDED HIGHWAYS



ELEVATION ON CENTERLINE
SHOWING PLACEMENT DETAILS
FOR TRAFFIC SIGNAL CONDUIT

GENERAL NOTES

Details of Construction not shown on this drawing shall conform to the pertinent requirements of the Standard Specifications, and the applicable Special Provisions.

MATERIALS

Metal Conduit shall be furnished and placed as shown hereon and in accord with the Standard Specifications.

Fiber Conduit shall be furnished and placed as shown hereon and in accord with the Standard Specifications.

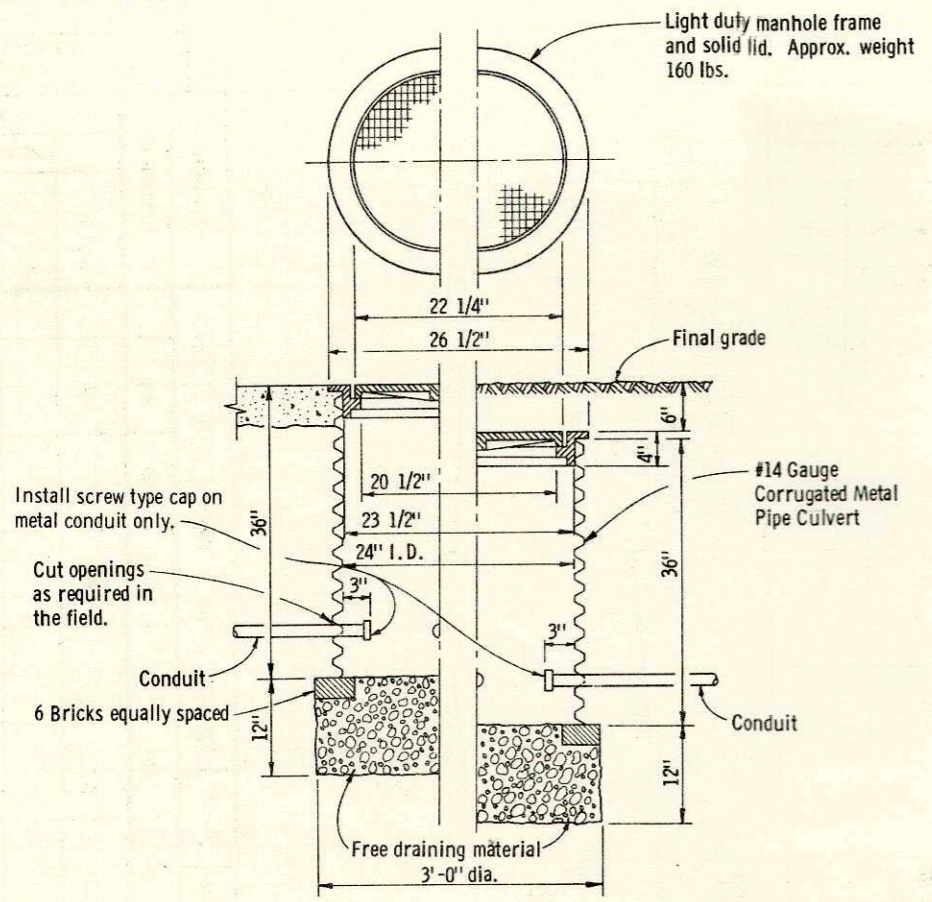
MEASUREMENT & PAYMENT

The item of Fiber Conduit shall be measured and paid for by the linear foot complete in place and in accord with Standard Specifications.

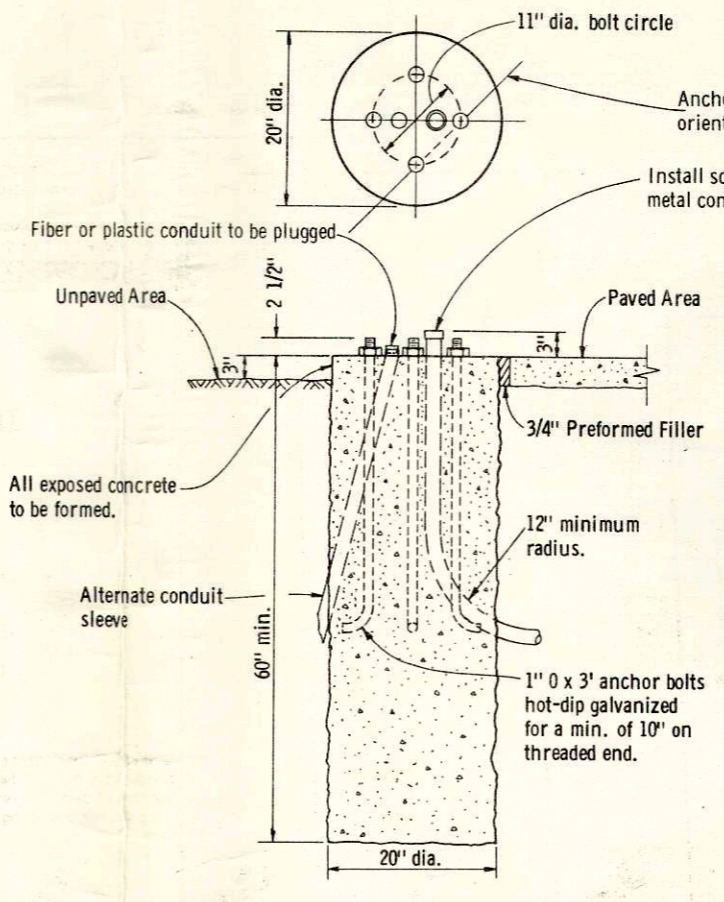
CONDUIT SIZE

Unless shown or required otherwise on the plans, Metal Conduit shall be 2" I. D.

METAL CONDUIT & FIBER CONDUIT	
STATE HIGHWAY COMMISSION OF WISCONSIN	
RECOMMENDED FOR APPROVAL:	
DATE: 4-3-63	<i>J. P. Pitt</i> ENGINEER OF DESIGN
APPROVED:	
DATE: 4/5/63	<i>E. C. Rostiger</i> STATE HIGHWAY ENGINEER
PLATE NO. 8-5.1.6	

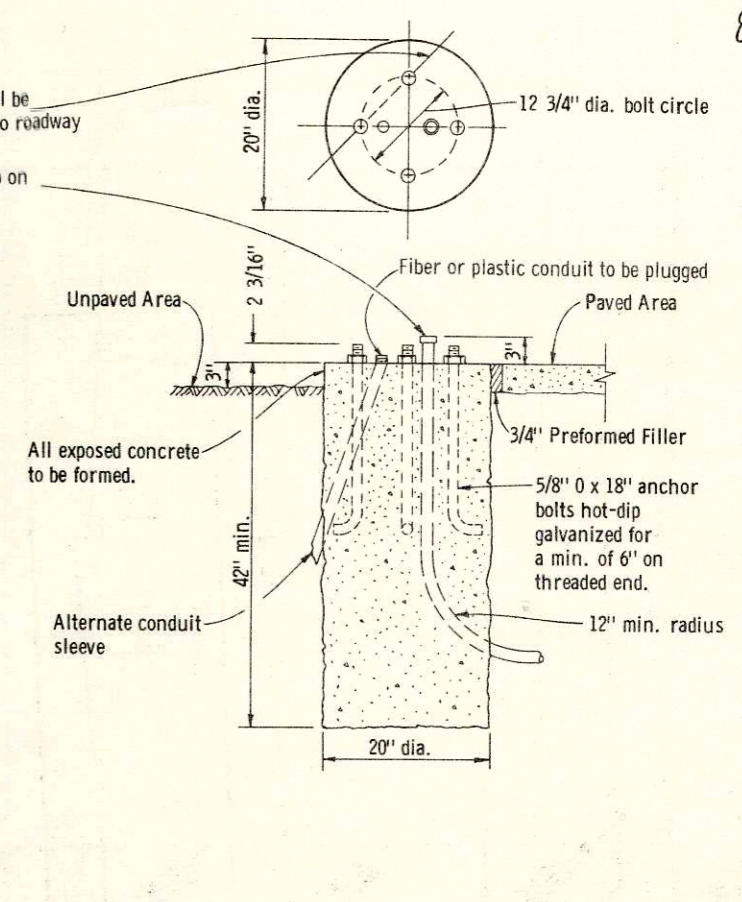


PULL BOX DETAIL **DETECTOR BOX DETAIL**



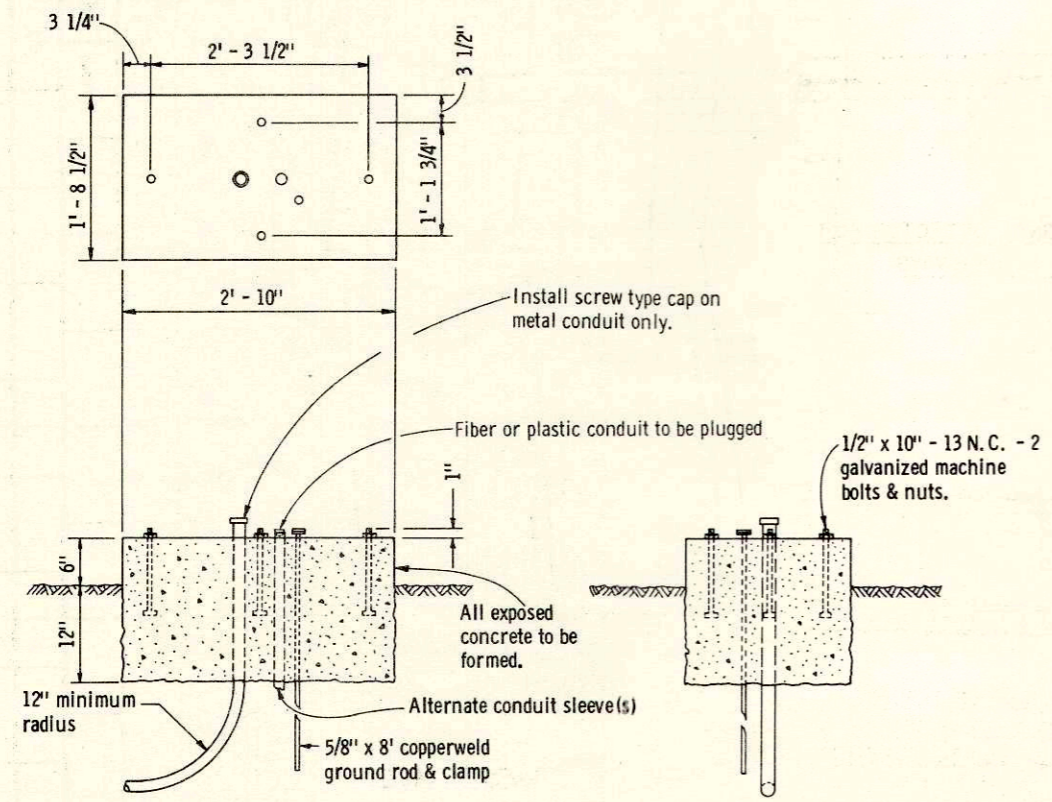
SHOWING INSTALLATION IN UNPAVED LOCATION SHOWING INSTALLATION IN PAVED LOCATION

TRAFFIC SIGNAL BASE
TYPE II

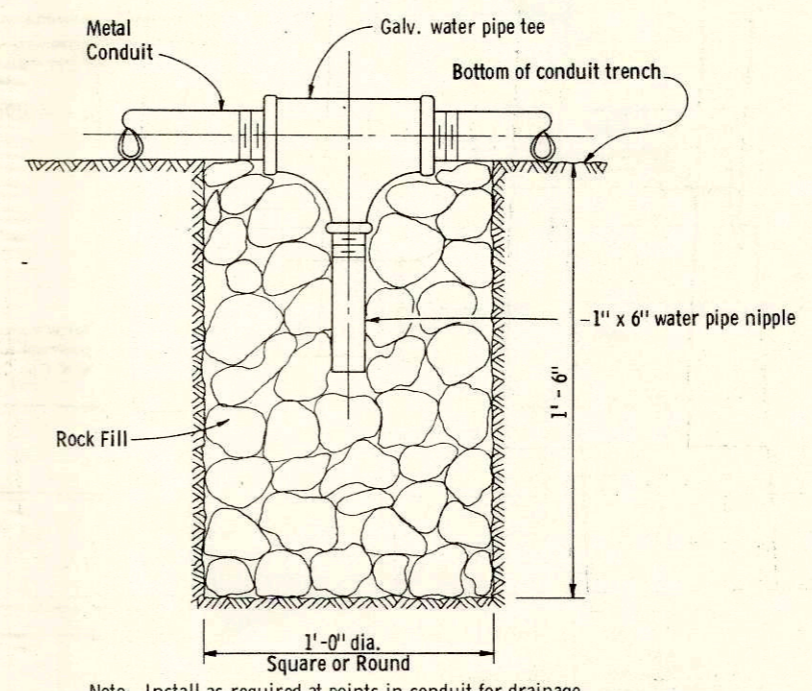


SHOWING INSTALLATION IN UNPAVED LOCATION SHOWING INSTALLATION IN PAVED LOCATION

TRAFFIC SIGNAL BASE
TYPE I



CONTROL CABINET BASE



Note: Install as required at points in conduit for drainage.

DRAIN SUMP FOR METAL CONDUIT

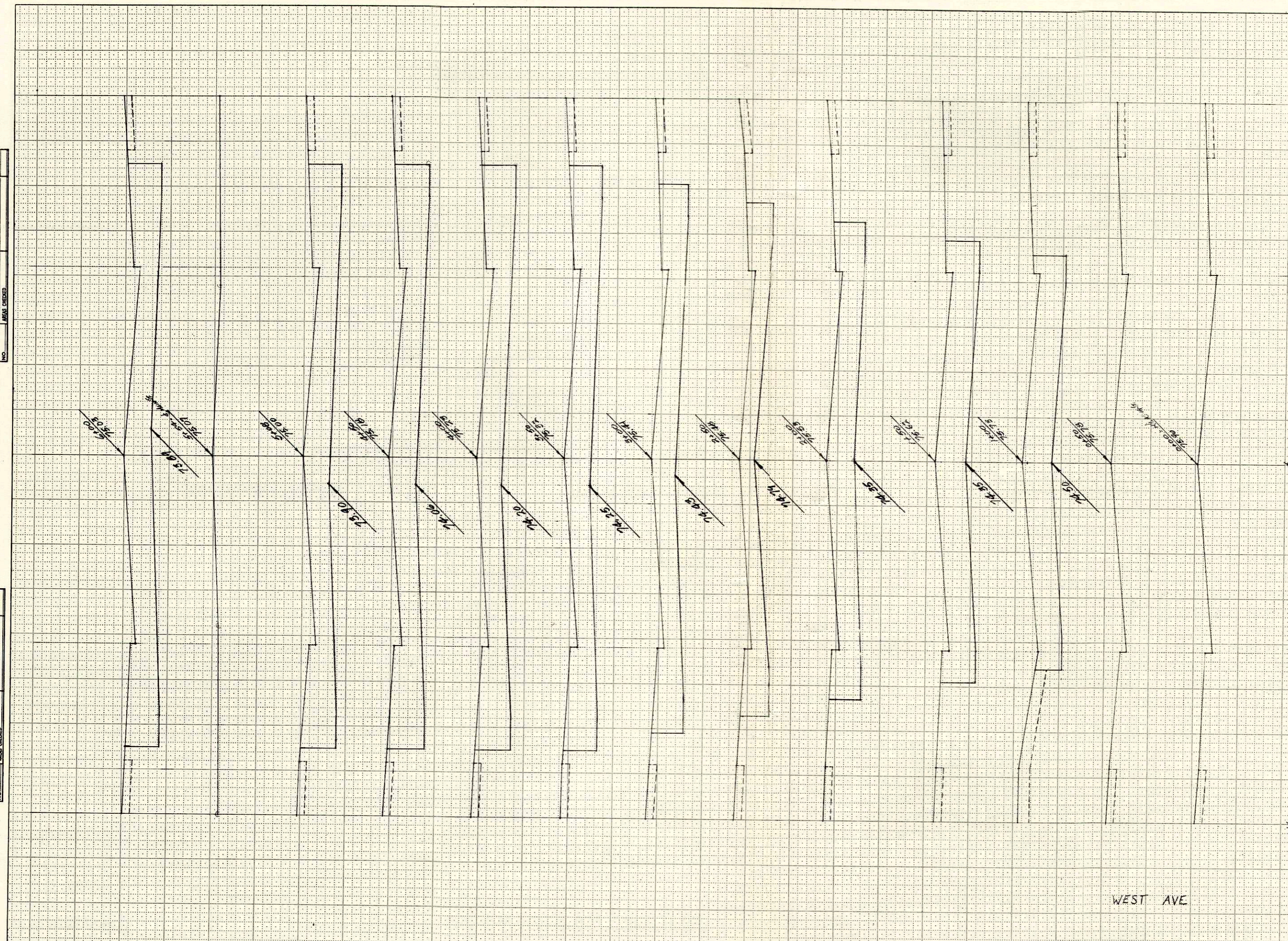
GENERAL NOTES
 Details of construction, materials and workmanship not shown on this drawing shall conform to the pertinent requirements of the Standard Specifications and applicable Special Provisions.
 Conduit may be metal, fiber or plastic. Locate as required. 12" min. radius applies to metal conduit only.
 Concrete masonry shall be grade "AA".

TRAFFIC SIGNAL DETAILS	
State of Wisconsin Department of Transportation Division of Highways	
RECOMMENDED FOR APPROVAL: DATE: 1/25/68	E. J. Rybit CHIEF DESIGN ENGINEER
APPROVED: DATE: 2/9/68	A. J. Linnister STATE HIGHWAY ENGINEER

B.P.R. REGION	PROJECT	SHEET NUMBER	TOTAL SHEETS
4 WIS.	5991-1-03 T.4140(2)	9	12

STATION	DISTANCE	YARDAGE	
		EXCAVATION	
		UNCL.	FILL
6000	92	244	
5108	53	156	
4150	30	134	
4100	50	130	
3150	50	122	
2100	50	94	
1450	50	109	
1100	50	104	

Scale = H.W. = 1" = 5' V.E.L. = 1" = 2'

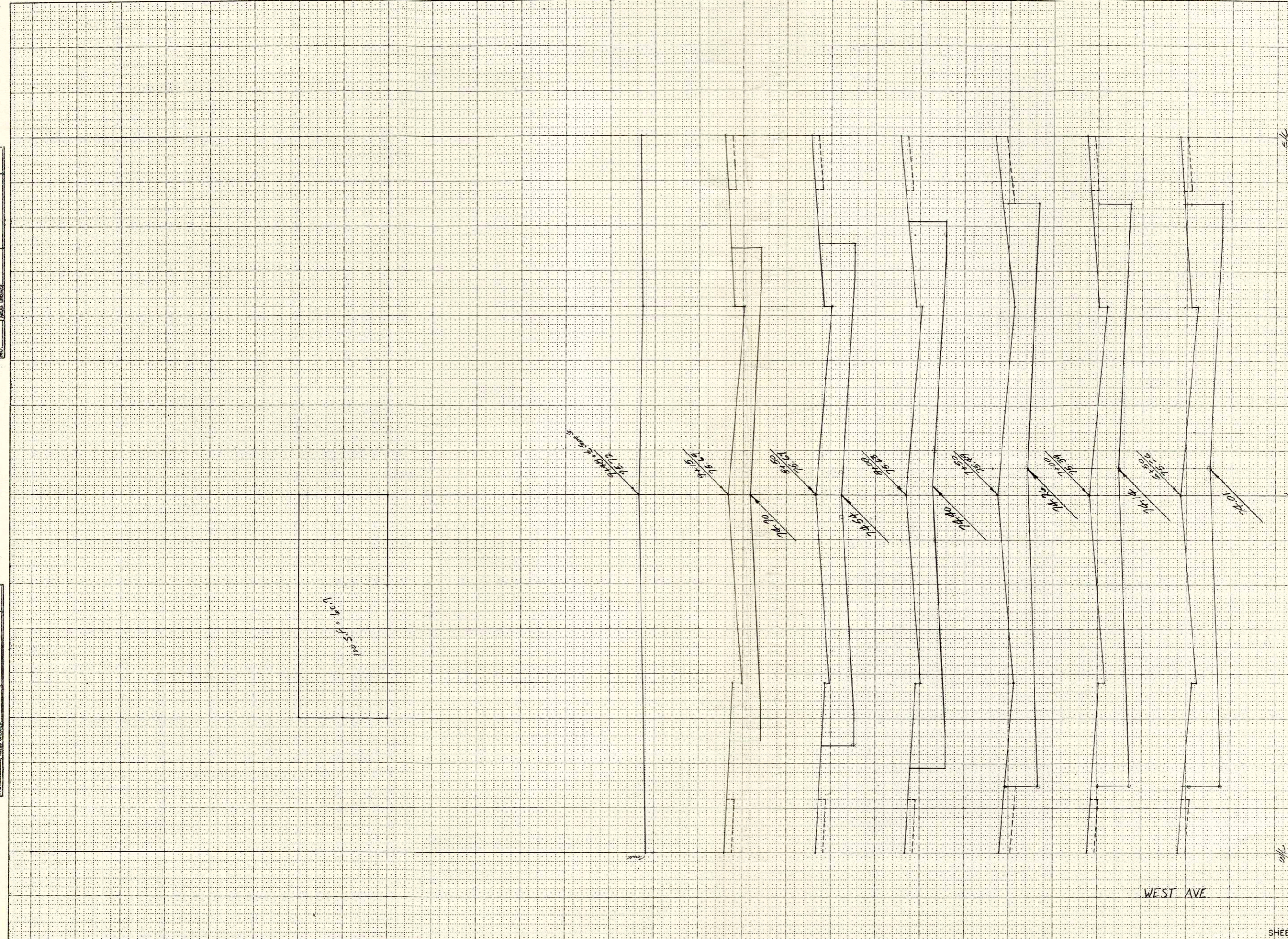


WEST AVE

SHEET TOTAL 11/90

BPR REGION	PROJECT	SHEET NUMBER	TOTAL SHEETS
DIVISION			
4	5991-1-08	10	12
WIS.	T4140(2)		

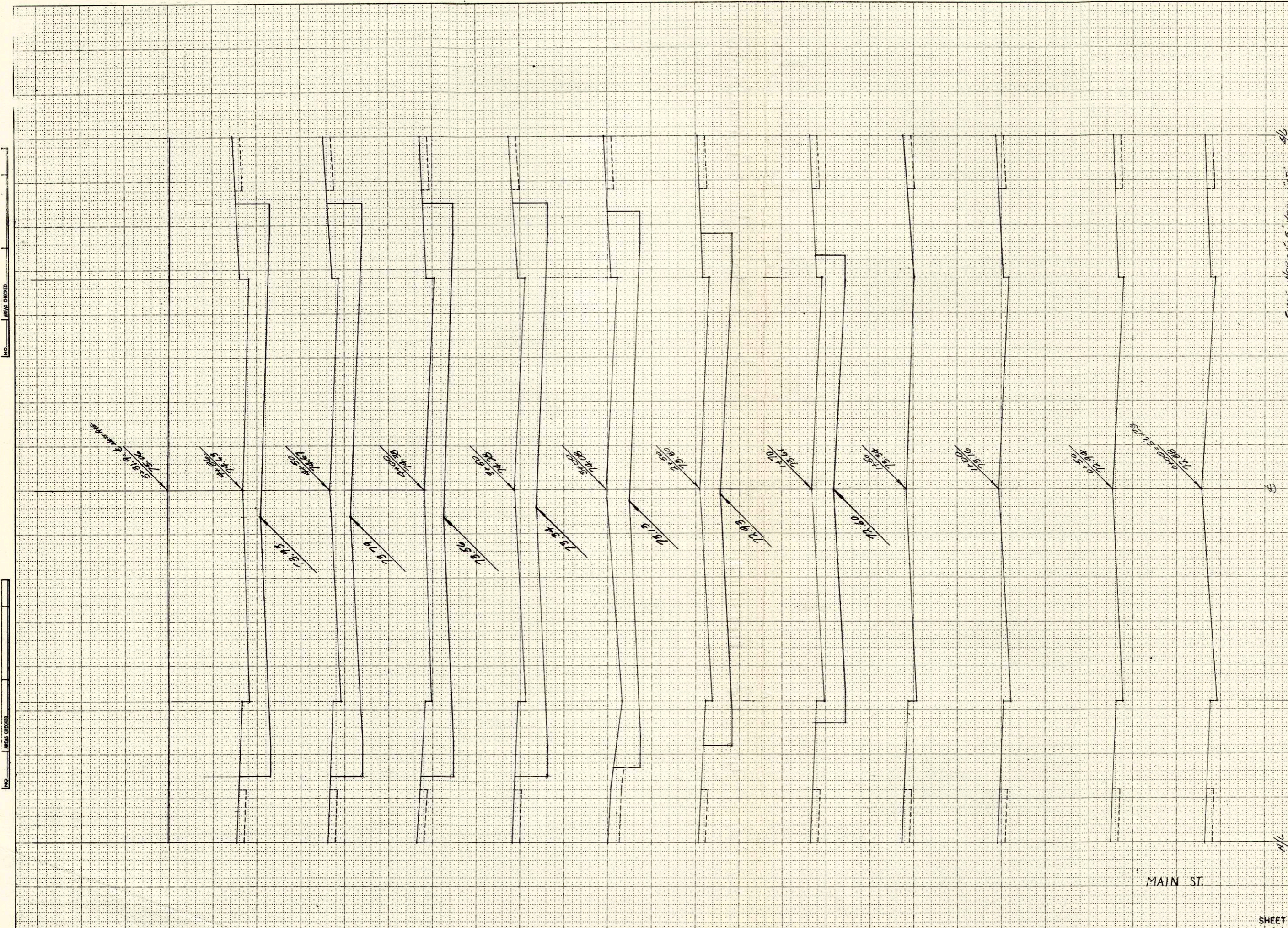
STATION	DISTANCE	YARDAGE	
		EXCAVATION	
		UNCL.	FILL
9132	82	176	
8150	50	120	
7400	50	128	
6750	50	141	
6100	50	136	
6+00			



NO. AREAS CHECKED

NO. AREAS CHECKED

BPR REGION DIVISION	PROJECT	SHEET NUMBER	TOTAL SHEETS
4 WIS.	5991-1-08 T 4140(2)	11	12

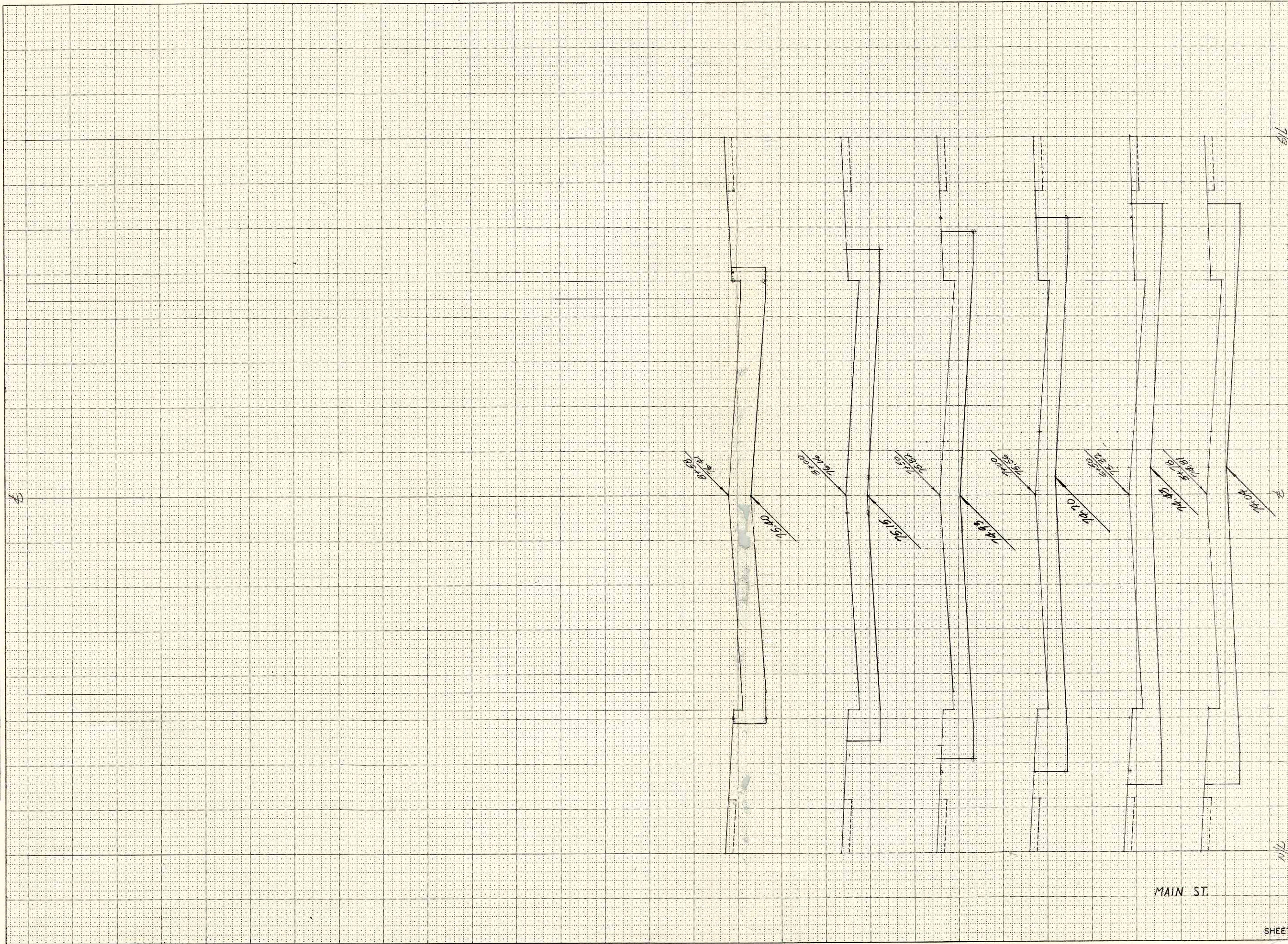


STATION	DISTANCE	YARDAGE	
		EXCAVATION	FILL
5+78	27	61	
4+86	36	85	
4+50	50	119	
4+00	50	170	
3+50	50	176	
3+00	50	104	
2+50	80	133	
1+70			

SHEET TOTAL 4 763

BPR REGION	PROJECT	SHEET	TOTAL
DIVISION	NUMBER	NUMBER	SHEETS
4	5991-1-08	12	12
WIS.	T 4140(2)		

NO. _____
 AREAS CHECKED _____
 AREAS CHECKED _____



SCALE - HOR. 1" = 5' VEC. 1" = 8'

N/D

STATION	DISTANCE	YARDAGE	
		EXCAVATION	
		UNCC	FILL
5+58	58		
6+00	60		
6+50	60		
7+00	70		
7+50	75		
8+00	80		
8+50	85		
9+00	90		
9+50	95		
10+00	100		
10+50	105		
11+00	110		
11+50	115		
12+00	120		
12+50	125		
13+00	130		
13+50	135		
14+00	140		
14+50	145		
15+00	150		
15+50	155		
16+00	160		
16+50	165		
17+00	170		
17+50	175		
18+00	180		
18+50	185		
19+00	190		
19+50	195		
20+00	200		
20+50	205		
21+00	210		
21+50	215		
22+00	220		
22+50	225		
23+00	230		
23+50	235		
24+00	240		
24+50	245		
25+00	250		
25+50	255		
26+00	260		
26+50	265		
27+00	270		
27+50	275		
28+00	280		
28+50	285		
29+00	290		
29+50	295		
30+00	300		
30+50	305		
31+00	310		
31+50	315		
32+00	320		
32+50	325		
33+00	330		
33+50	335		
34+00	340		
34+50	345		
35+00	350		
35+50	355		
36+00	360		
36+50	365		
37+00	370		
37+50	375		
38+00	380		
38+50	385		
39+00	390		
39+50	395		
40+00	400		
40+50	405		
41+00	410		
41+50	415		
42+00	420		
42+50	425		
43+00	430		
43+50	435		
44+00	440		
44+50	445		
45+00	450		
45+50	455		
46+00	460		
46+50	465		
47+00	470		
47+50	475		
48+00	480		
48+50	485		
49+00	490		
49+50	495		
50+00	500		
50+50	505		
51+00	510		
51+50	515		
52+00	520		
52+50	525		
53+00	530		
53+50	535		
54+00	540		
54+50	545		
55+00	550		
55+50	555		
56+00	560		
56+50	565		
57+00	570		
57+50	575		
58+00	580		
58+50	585		
59+00	590		
59+50	595		
60+00	600		
60+50	605		
61+00	610		
61+50	615		
62+00	620		
62+50	625		
63+00	630		
63+50	635		
64+00	640		
64+50	645		
65+00	650		
65+50	655		
66+00	660		
66+50	665		
67+00	670		
67+50	675		
68+00	680		
68+50	685		
69+00	690		
69+50	695		
70+00	700		
70+50	705		
71+00	710		
71+50	715		
72+00	720		
72+50	725		
73+00	730		
73+50	735		
74+00	740		
74+50	745		
75+00	750		
75+50	755		
76+00	760		
76+50	765		
77+00	770		
77+50	775		
78+00	780		
78+50	785		
79+00	790		
79+50	795		
80+00	800		
80+50	805		
81+00	810		
81+50	815		
82+00	820		
82+50	825		
83+00	830		
83+50	835		
84+00	840		
84+50	845		
85+00	850		
85+50	855		
86+00	860		
86+50	865		
87+00	870		
87+50	875		
88+00	880		
88+50	885		
89+00	890		
89+50	895		
90+00	900		
90+50	905		
91+00	910		
91+50	915		
92+00	920		
92+50	925		
93+00	930		
93+50	935		
94+00	940		
94+50	945		
95+00	950		
95+50	955		
96+00	960		
96+50	965		
97+00	970		
97+50	975		
98+00	980		
98+50	985		
99+00	990		
99+50	995		
100+00	1000		

MAIN ST.

SHEET TOTAL 596