

2

STATE OF WISCONSIN  
DEPARTMENT OF TRANSPORTATION  
DIVISION OF HIGHWAYS

STATE PROJECT	FEDERAL PROJECT	
	PROJECT	CONTRACT
0032-64-12		1
0061-64-10		1
0006-64-11		1
0027-64-12		1

Index of Sheets

Sheet No.	Title
1	1
-	Typical Cross Sections
3	Estimate of Quantities
-	Miscellaneous Quantities
-	Right of Way Plat
-	Plan and Profile
6	Standard Details
7-7.5	Structure Plans
-	Computer Earthwork Data
-	Cross Sections

TOTAL SHEETS = 9

PLAN AND PROFILE OF PROPOSED

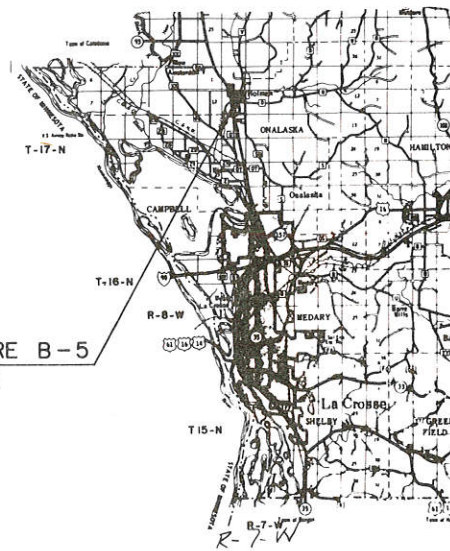
BRIDGE FLOOR REPAIR

S.T.H. 54 OVERHEAD  
S.T.H. 54  
JACKSON COUNTY



HALFWAY CREEK  
U.S.H. 53  
LA CROSSE COUNTY

STATE PROJECT NUMBER  
0032-64-12



Design Designation

A.D.T.	=
A.D.T.	=
D.H.V.	=
D.	=
T.	=
V.	=

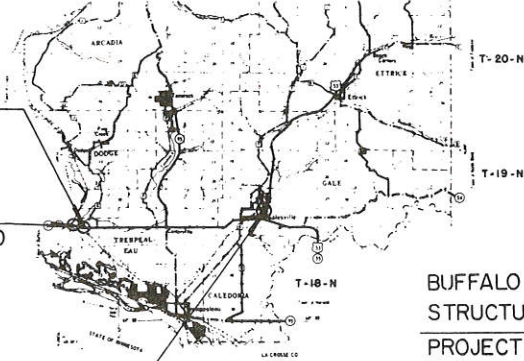
HALFWAY CREEK; STRUCTURE B-5  
PROJECT I.D. 0032-64-12

Conventional Signs

County Line	-----	Culverts in Place	-----
Township or Range Line	-----	Culverts Required	-----
Section Line	-----	Drop Inlet	-----
New Right of Way Line	-----	Power Pole	-----
Present Right of Way Line	-----	Telephone or Telegraph Pole	-----
Wire Fence	-----	Right of Way Markers	-----
Corporate or City Limits	-----	Reference Stake for Hubs Only	-----
Property Line	-----	Marsh	-----
Traveled Way or P.E.	-----	Hedge	-----
Railroads	-----	Trees	-----
Base or Survey Line	-----	Ground Elevation	-----
Caution Symbol (combustible fluids under pressure)	-----	Grade Elevation	-----

TREMP. RIVER, PINE CREEK  
GALESVILLE BRIDGE  
S.T.H. 35 & U.S. 53  
TREMPEALEAU COUNTY

STATE PROJECT NUMBER  
0061-64-10



TREMP. RIVER;  
STRUCTURE B-28  
PROJECT I.D. 0061-64-10

PINE CREEK;  
STRUCTURE B-29  
PROJECT I.D. 0061-64-10

GALESVILLE BRIDGE;  
STRUCTURE B-947  
PROJECT I.D. 0061-64-10

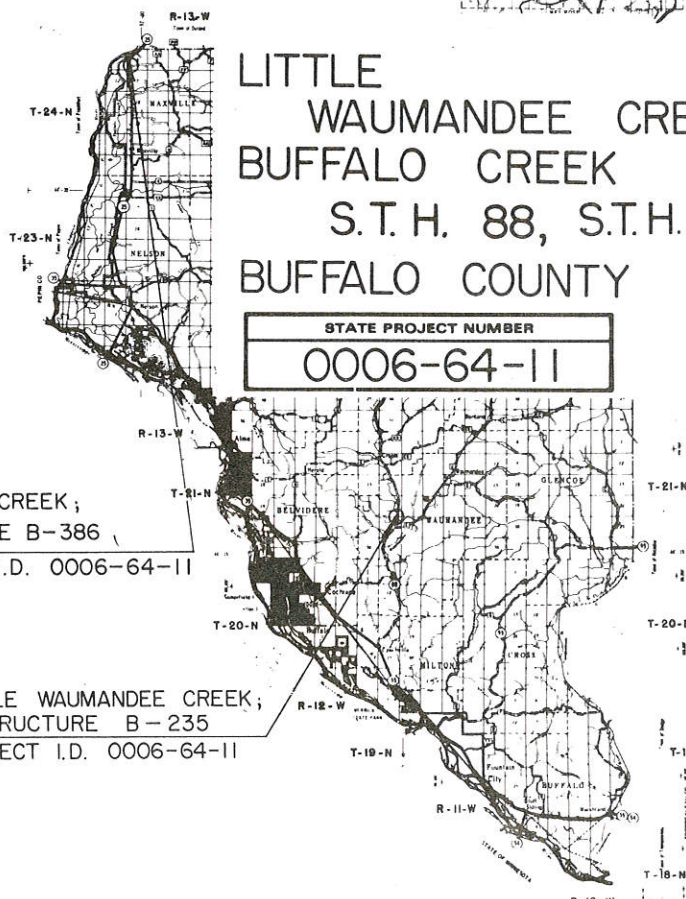
Layout



Total Net Length of Centerline = Mi.

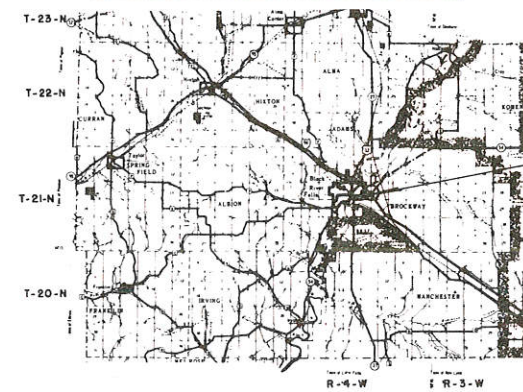
LITTLE  
WAUMANDEE CREEK  
BUFFALO CREEK  
S.T.H. 88, S.T.H. 25  
BUFFALO COUNTY

STATE PROJECT NUMBER  
0006-64-11



BUFFALO CREEK;  
STRUCTURE B-386  
PROJECT I.D. 0006-64-11

LITTLE WAUMANDEE CREEK;  
STRUCTURE B-235  
PROJECT I.D. 0006-64-11



S.T.H. 54 OVERHEAD;  
STRUCTURE B-45  
PROJECT I.D. 0027-64-12

STATE OF WISCONSIN  
DEPARTMENT OF TRANSPORTATION  
DIVISION OF HIGHWAYS

Surveyor \_\_\_\_\_ District Checker \_\_\_\_\_  
Designer \_\_\_\_\_ C.O. Checker J.L.S.

Correct: \_\_\_\_\_  
Date 1/29/76 \_\_\_\_\_ District Engineer

Recommended for Approval:  
Date 6/2/76 B.J. Sanderson CHIEF MAINTENANCE ENGINEER

Approved:  
Date 6/2/76 W.S. Fiedler State Highway Engineer

U.S. DEPARTMENT OF TRANSPORTATION  
FEDERAL HIGHWAY ADMINISTRATION  
REGION 5 WISCONSIN DIVISION

Approved: \_\_\_\_\_  
Date \_\_\_\_\_ Division Engineer

0027-64-12 Jackson  
0032-64-12 La Crosse  
0061-64-10 Trempealeau  
60 Sets  
July



**ESTIMATE OF QUANTITIES**

CONTRACT NO. 1 BRIDGE REPAIRS

STATE PROJECT NUMBER	0006-64-11 0032-64-12 0061-64-10
SHEET NO.	3

NET LENGTH OF CENTER LINE	STATION TO STATION	ITEM NO.	UNIT	LIN. FT.
---------------------------	--------------------	----------	------	----------


BRIDGES (STRUCTURES OVER 20 FT. SPAN)

BRIDGE NUMBER	PROJECT	ITEM NO.	UNIT	LB	EA.	S.Y.	S.Y.	S.Y.	S.Y.	S.Y.	S.Y.	S.Y.	L.F.	L.F.	L.F.	L.F.	L.F.	L.F.	L.F.	90009
B-235	0006-64-11	50504	BRIDGES	1590		321							55	106	27					90009
B-386	0006-64-11	950	BAR STEEL	950		140		25	33											
B-45	0027-64-12	B-45	STRENGTH			743								74						
B-5	0032-64-12	B-5	DRAINS	1530		115		45												
B-28	0061-64-10	B-28	TYPE "A"																	
B-29	0061-64-10	B-29	FLOOR OVER LAY			28														
B-947	0061-64-10	B-947	CONCRETE	1670		1216		8	53	74										
<b>TOTALS</b>				<b>5740</b>	<b>4</b>	<b>2420</b>	<b>149</b>	<b>8</b>	<b>178</b>	<b>329</b>	<b>105</b>	<b>27</b>	<b>1180</b>	<b>1</b>	<b>1</b>	<b>1</b>	<b>1</b>	<b>1</b>	<b>1</b>	<b>1</b>

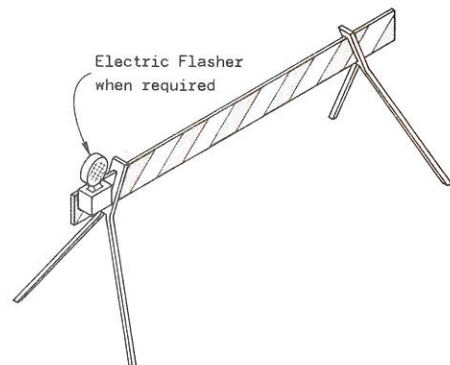
STANDARD DETAIL DRAWINGS  
15C1-4 CONSTRUCTION BARRICADE AND STANDARD SIGNS (RII-2 & W20-3)



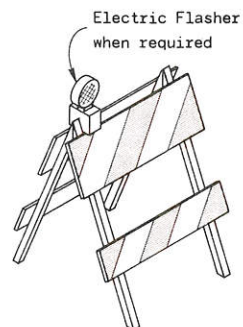
TABLE OF BARRICADE CHARACTERISTICS

BARRICADE TYPE	I	II	III
Height	3' (91.4 cm) Min.		5' (152.4 cm) Min.
* Rail Width	8" (20.3 cm) Min. to 12" (30.5 cm) Max.		
Rail Length	2' (61.0 cm) Min. to Variable Maximum		
** Stripe Width	6" (15.2 cm) at 45° Angle		
Stripe Colors	Reflectorized Orange & White		

\* Nominal dimensions when barricade is constructed of lumber.  
 \*\* May be 4" (10.2 cm) for rail lengths less than 3' (91.4 cm).



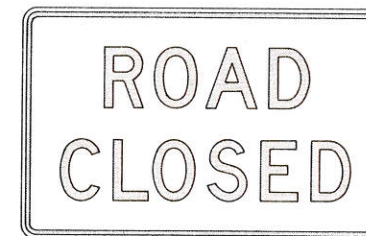
TYPICAL TYPE I BARRICADE



TYPICAL TYPE II BARRICADE

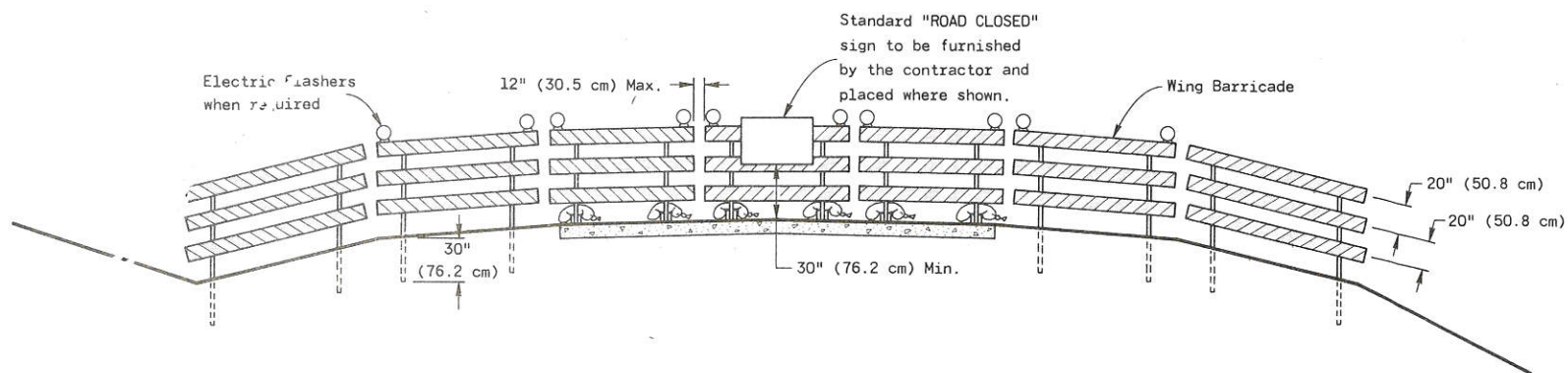


**W20-3**  
 48" (121.9 cm) x 48" (121.9 cm)  
 Black Lettering on Reflective Orange Background  
 Letter Series "D"  
 Letter height 7" (17.8 cm)



**R11-2**  
 48" (121.9 cm) x 30" (76.2 cm)  
 Black Lettering on Reflective White Background  
 Letter Series "D"  
 Letter height 8" (20.3 cm)

STANDARD SIGNS-TYPE II



TYPICAL INSTALLATION SHOWING TYPE III BARRICADE

CONSTRUCTION BARRICADES

**GENERAL NOTES**

The contractor shall furnish, erect and maintain Barricades and Signs. Details regarding location, spacing, dimensions, fabrication, material, sign lettering, lighting devices and color of Barricades and Signs shall conform to this drawing, the Wisconsin Manual on Uniform Traffic Control Devices, the Standard Specifications, Special Provisions and/or plans.

Type III Barricades and Signs shall be erected at the termini of projects and at other road or street locations where it is necessary to control or eliminate public access to the construction area.

Type I and II Barricades shall be used on projects when traffic is to be maintained through the construction area.

The actual field location of barricade installations and advance signs shall be as directed by the Engineer.

**CONSTRUCTION BARRICADES & STANDARD SIGNS**

State of Wisconsin  
 Department of Transportation  
 Division of Highways

RECOMMENDED FOR APPROVAL:

6-6-75  
 DATE

*J. C. Hennrich*  
 CHIEF OF FACILITIES DEVELOPMENT

APPROVED  
 6-6-75  
 DATE

*W. J. Sudler*  
 STATE HIGHWAY ENGINEER



PROJECT NO.	0006-64-11
FEDERAL PROJECT DESIGNATION	7
SHEET NUMBER	7
TOTAL SHEETS	

**DESIGN DATA**

B-6-386	H18	DESIGN RATING
B-6-235	H21	DESIGN RATING
B-6-235	H20	INVENTORY RATING
B-6-235	H20	OPERATIONAL RATING
B-6-235	HS28	OPERATIONAL RATING

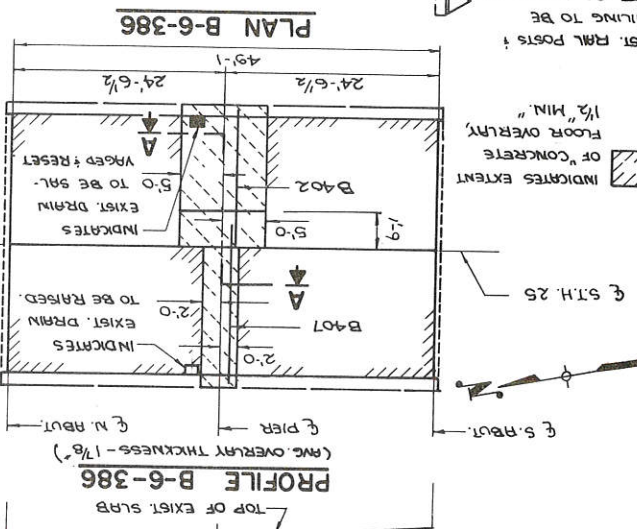
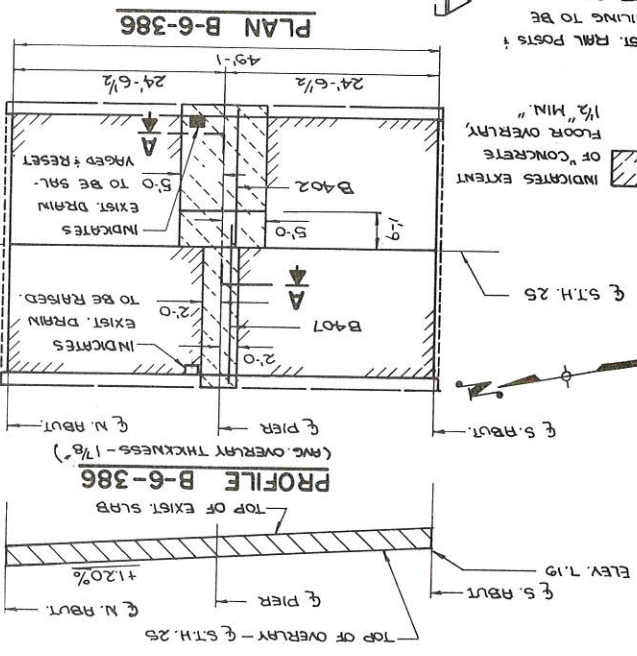
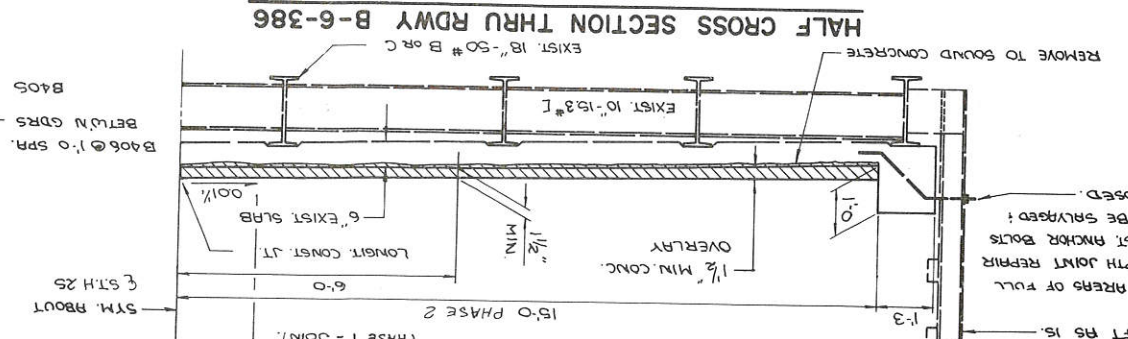
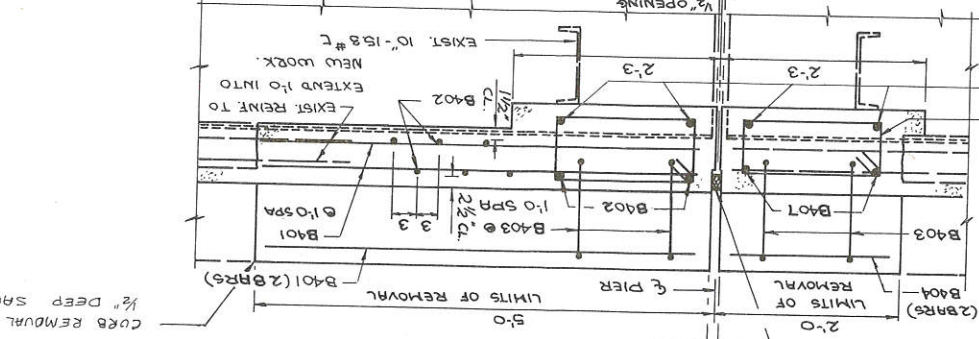
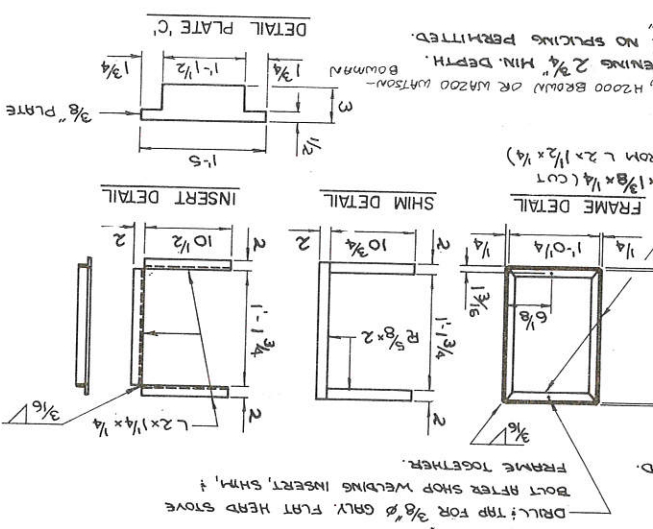
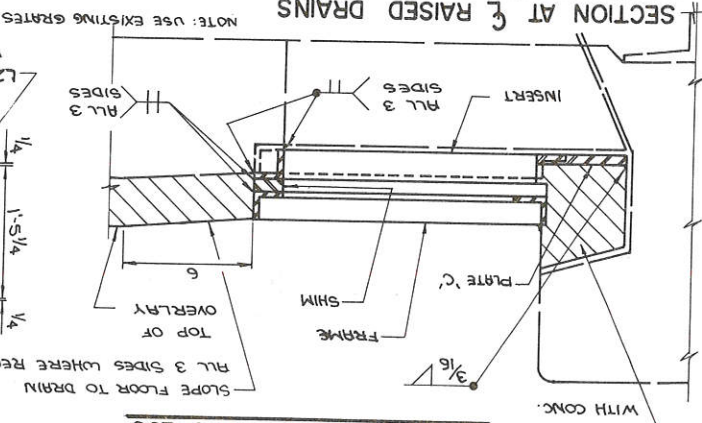
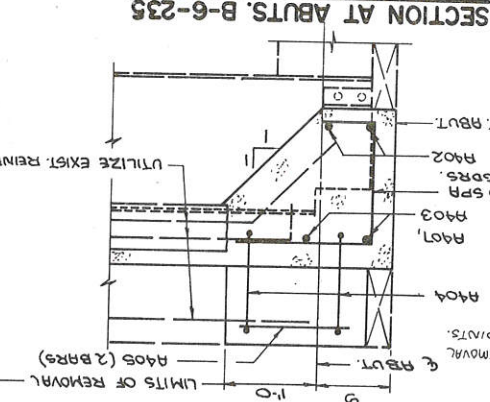
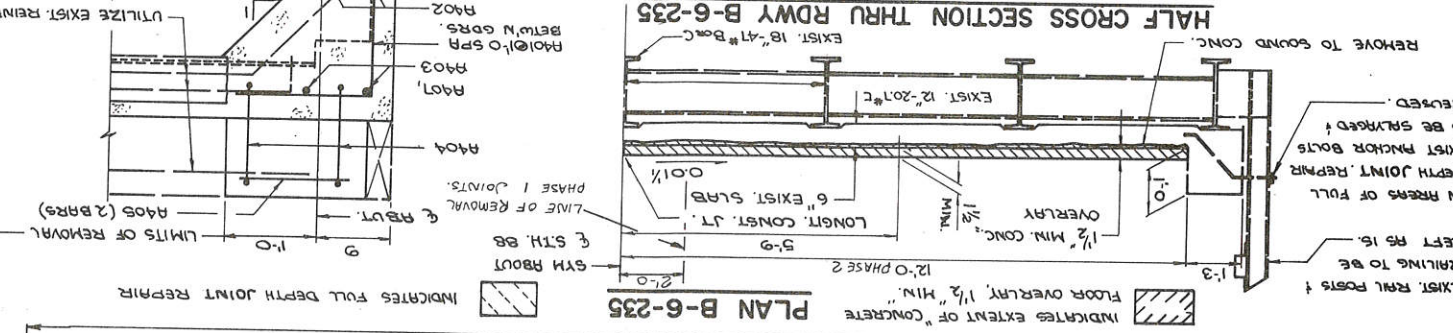
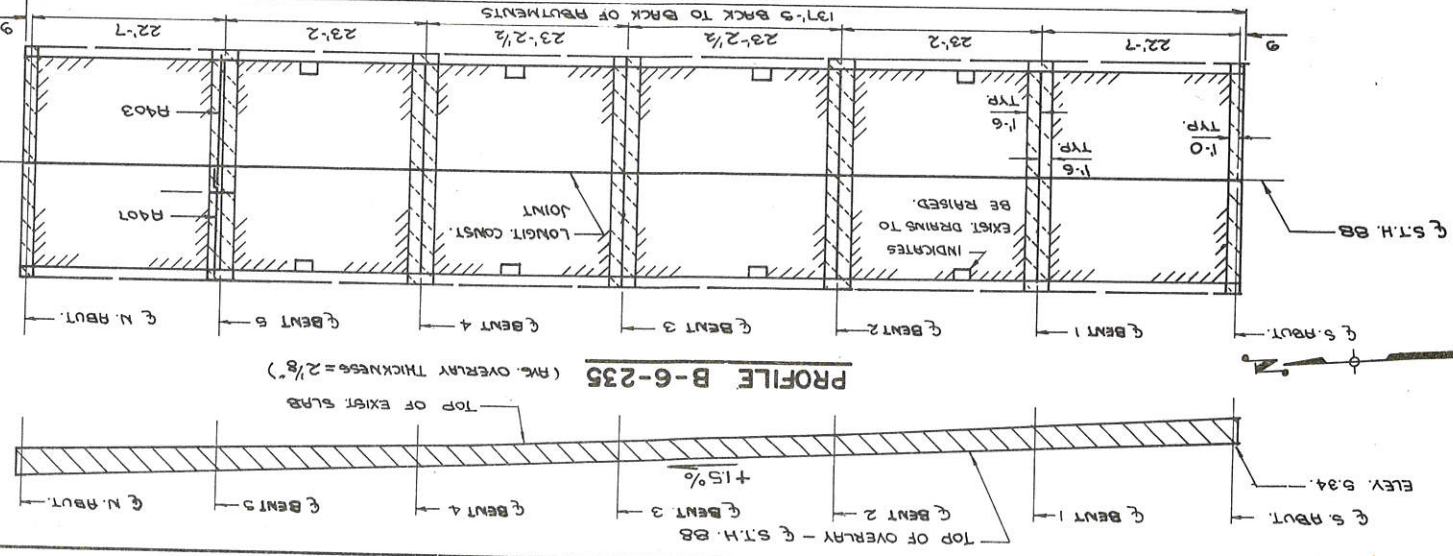
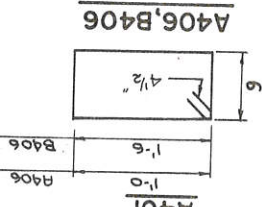
**TOTAL ESTIMATED QUANTITIES**

CONCRETE FLOOR OVERLAY, 1 1/2" MIN	321 S.Y.
FULL DEPTH JOINT REPAIR	23 S.Y.
HIGH STRENGTH BAR STEEL REINFORCEMENT	1590 LB.
STRUCTURAL CARBON STEEL	320 LB.
PREFORMED ELASTOMERIC COMPRESSION JOINT SEAL-2"	106 L.F.
PREFORMED ELASTOMERIC COMPRESSION JOINT SEAL-4"	27 L.F.

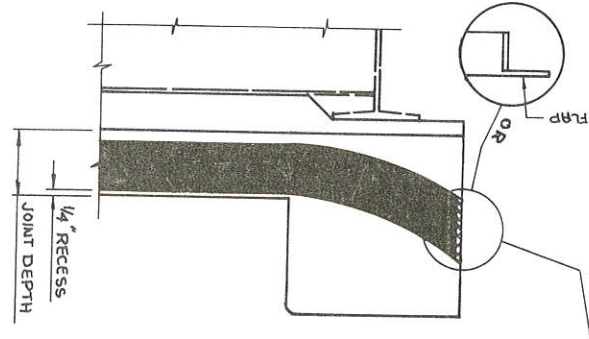
NOTE: ALL DIMENSIONS IN BENDING ARE OUT TO OUT OF BAR. THE FIRST DIGIT OF A BAR MARK SIGNIFIES THE BAR SIZE.

**BILL OF BARS**

MARK	NO.	LENGTH	BENT	LOCATION
A401	48	3'-1"	X	B-6-235 ROU
A402	144	3'-6"	"	± PIER JTS.
A403	24	14'-5"	"	"
A404	48	3'-10"	X	"
A405	48	1'-1"	"	"
A406	240	3'-6"	X	PIER JTS.
A407	24	13'-0"	"	ROU1 PIER JTS.
B401	64	4'-9"	"	B-6-386 PIER JOINT
B402	38	16'-0"	"	"
B403	14	3'-10"	X	"
B404	4	1'-6"	"	"
B405	28	3'-9"	"	"
B406	56	4'-6"	X	"
B407	4	17'-5"	"	"



**SECTION THRU CURB AT JOINTS**



CPJ END OF SEAL WITH A SEC-42B CLOSED CELL NEOPRENE SPONGE CONFORMING TO ASTM D1656-G1T, 1/2" THICK, CUT TO MATCH THE UNCOMPRESSED SEAL CROSS SECTION; CENTERED IN PLACE WITH THE LUBRICANT RESIN, OR A FLAP FORMED BY CUTTING AWAY ALL BUT THE TOP SURFACE OF THE SEAL, THEN BENT DOWN; CENTERED IN PLACE.

**CONCRETE DECK JOINT REPAIR AND OVERLAY**

SHEET 1 OF 1

X 56258

STATE OF WISCONSIN  
DEPARTMENT OF TRANSPORTATION

DIVISION OF HIGHWAYS

STRUCTURE B-6-235/386

STH 88/25 OVER LITTLE WAUMANDEE CREEK/CREEK

COUNTY BUFFALO

DESIGN SPEC. TN-WAUMANDEE/CREEK/NELSON

CONSTR. YEAR 1975

DESIGNED BY CRH

CHECKED BY B.W.

APPROVED BY W.B. Kline

DATE 5/25/76

CHIEF BRIDGE ENGINEER

No	Date	Revision



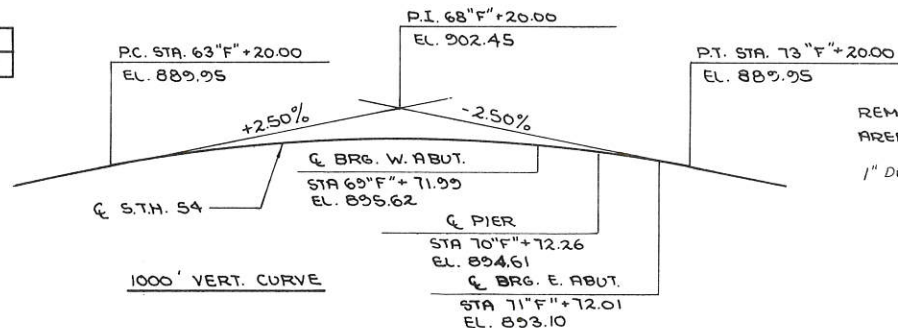
BENCH MARK	
LOCATION	ELEV.
N.W. CORNER - TOP OF CURB	895.63

**CURVE DATA**

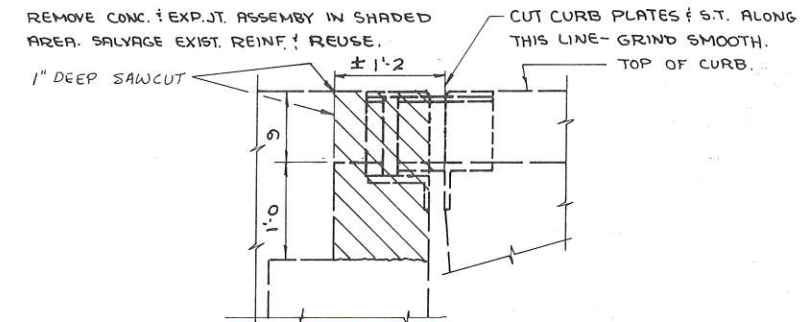
P.I. = 66+42.01  
 $\Delta$  = 48°-53'-15"  
D = 1°-30'  
T = 1736.22'  
L = 3259.17'  
R = 3819.72'  
G.E. = 0.035%

**PROFILE**

AVG. OVERLAY THICKNESS = 2"

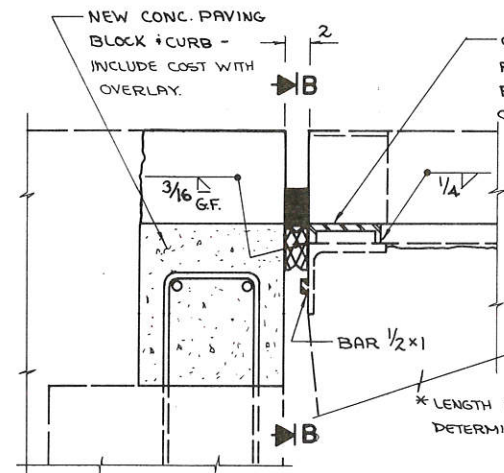


**PROFILE GRADE S.T.H. 54**



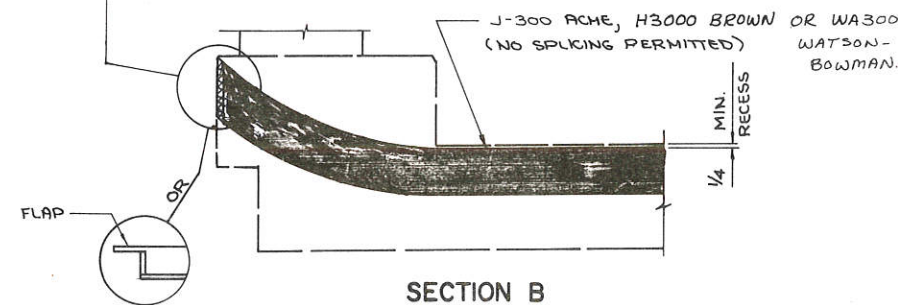
**SECTION THRU EXIST. JOINT AT ABUTS.**

NOTE: ALL STEEL USED IN EXPANSION JOINTS TO BE PAID FOR AS "STRUCTURAL CARBON STEEL".

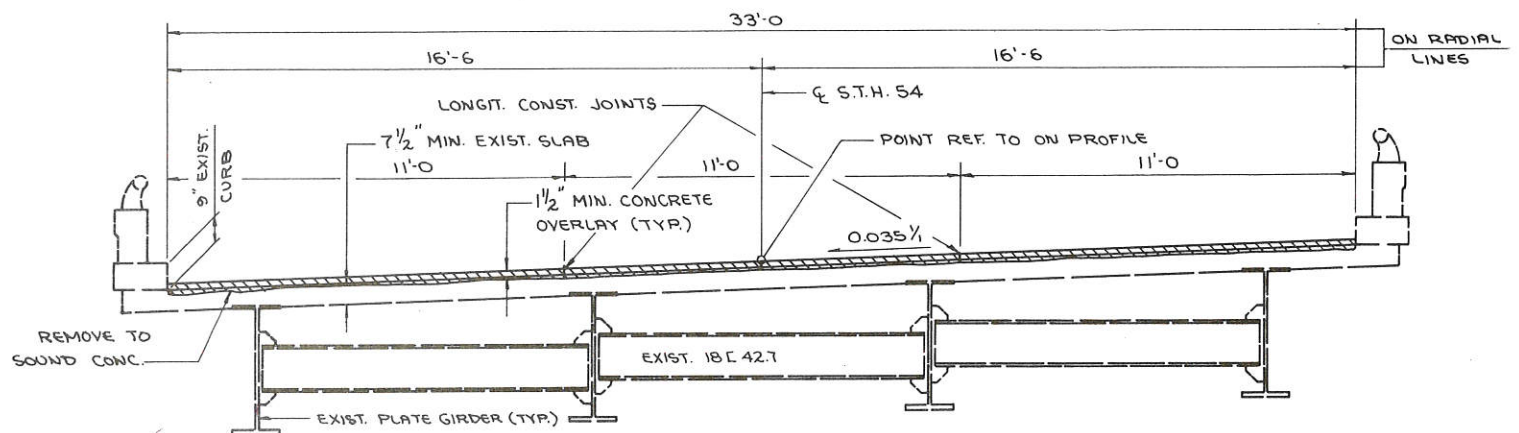
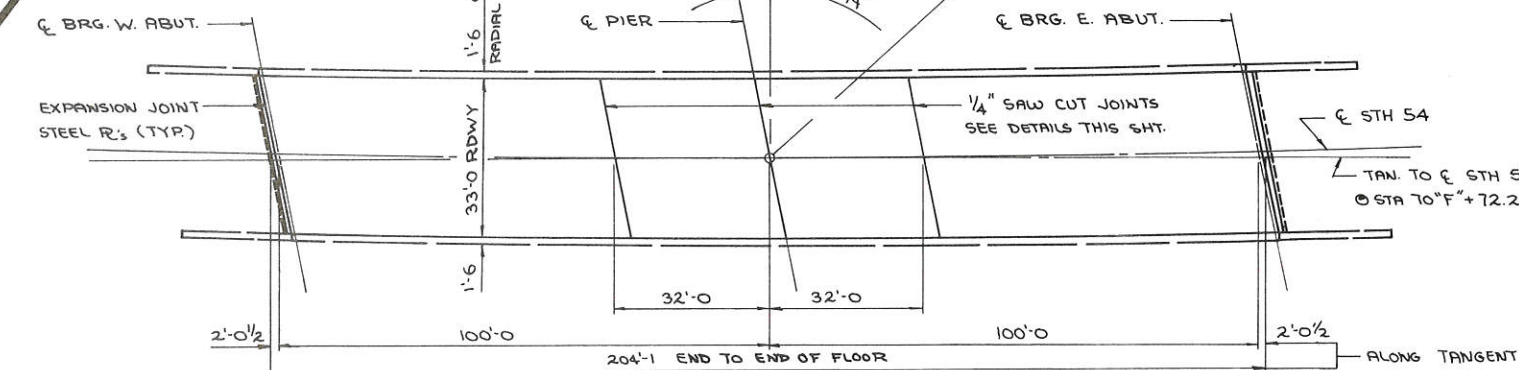


**SECTION THRU JT. AT ABUTS. (SHOWING NEW WORK)**

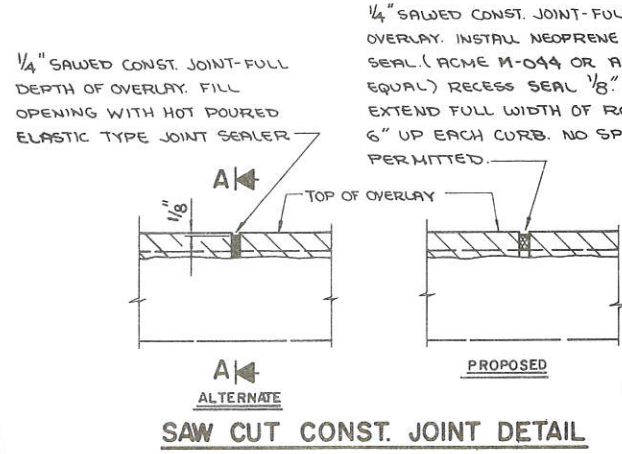
CAP END OF SEAL WITH A SCE-42B CLOSED CELL NEOPRENE SPONGE CONFORMING TO ASTM D1056-61T, 1/2" THICK, CUT TO MATCH THE UNCOMPRESSED SEAL CROSS SECTION & CEMENTED IN PLACE WITH THE LUBRICANT ADHESIVE, OR A FLAP FORMED BY CUTTING AWAY ALL BUT THE TOP SURFACE OF THE SEAL, THEN BENT DOWN & CEMENTED IN PLACE.



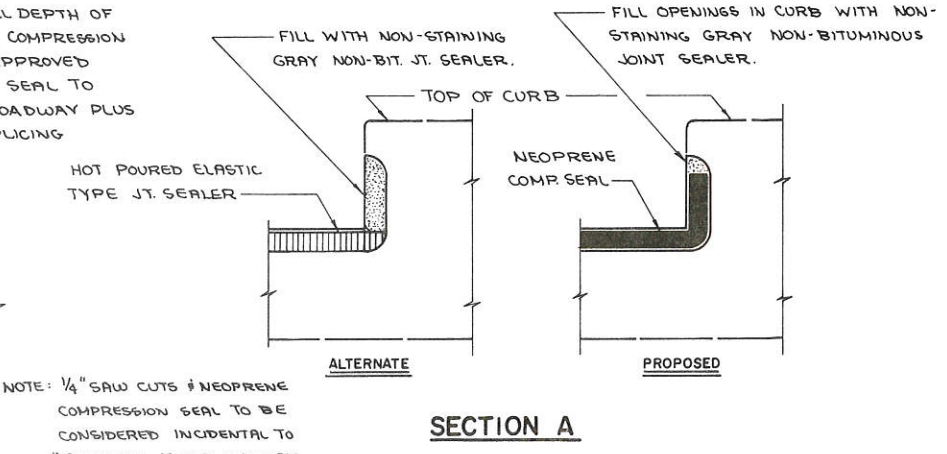
**SECTION B (SHOWING NEOPRENE SEAL)**



**CROSS SECTION THRU ROADWAY (LOOKING EAST)**



**SAW CUT CONST. JOINT DETAIL**



**SECTION A**

NOTE: 1/4" SAW CUTS & NEOPRENE COMPRESSION SEAL TO BE CONSIDERED INCIDENTAL TO "CONCRETE FLOOR OVERLAY, 1 1/2" MIN."

**DESIGN DATA**

DESIGN RATING \_\_\_\_\_ HS 19  
INVENTORY RATING \_\_\_\_\_ H 22  
OPERATIONAL RATING \_\_\_\_\_ HS 29

**TOTAL ESTIMATED QUANTITIES**

CONCRETE FLOOR OVERLAY, 1 1/2" MIN. \_\_\_\_\_ 743 S.Y.  
STRUCTURAL CARBON STEEL \_\_\_\_\_ 820 LB.  
PREFORMED ELASTOMERIC COMPRESSION JT. SEAL - 3" \_\_\_\_\_ 74 L.F.

NOTE: PRICE BID FOR "STRUCTURAL CARBON STEEL" TO INCLUDE COST OF FIELD WELDING CHANNEL & BAR TO EXISTING EXPANSION JOINTS.

No.	Date	Revision	By
STATE OF WISCONSIN DEPARTMENT OF TRANSPORTATION DIVISION OF HIGHWAYS			
<b>STRUCTURE B-27-45</b>			
S.T.H. 54 OVER I 94			
County	JACKSON	Town/City/Village	BROCKWAY
Design Spec.		Load	Const. Spec. 1975
Designed By	CRH	Design Checked	MSR
Drawn By	CRH	Plans Checked	B.W.
Approved	W.A. Kline Chief Bridge Engineer		5/25/76 Date
<b>CONCRETE OVERLAY &amp; JOINT DETAILS</b>			SHEET 1 OF 1 <b>X 56259</b>



PROJECT I.D.	0032-64-12
FEDERAL PROJECT DESIGNATION	7.2
SHEET NUMBER	
TOTAL SHEETS	

NOTE: ALL DIMENSIONS IN BENDS ARE OUT TO OUT OF BAR.  
 THE FIRST DIGIT OF A BAR MARK SIGNIFIES THE BAR SIZE.  
 THE BAR SIZE.

**BILL OF BARS**

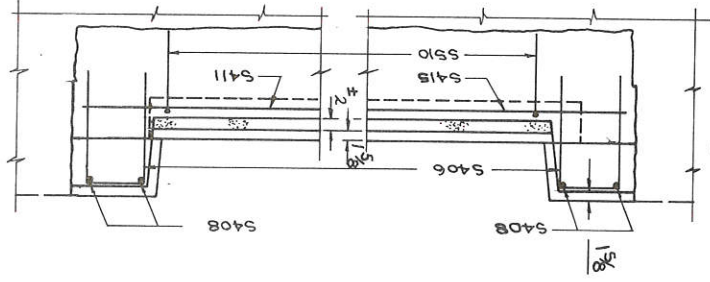
MARK	NO.	LENGTH	BENT	LOCATION
S401	56	4'-3"		SLAB - TOP LONGIT.
S402	44	4'-10"		" - BTM - " - " - "
S603	8	19'-6"		" - DIAPH. - HORIZ.
S604	16	6'-7"		" - " - " - " - "
S405	56	5'-6"	X	" - " - VERT.
S406	8	4'-0"	X	CURB - VERT.
S407	18	3'-0"		" - " - HORIZ. • ABUT.
S408	8	1'-2"		" - " - " - " - "
S409	4	3'-10"		" - " - " - " - "
S510	64	3'-4"	X	ABUTMENT - VERT.
S411	4	18'-7"		" - HORIZ.
S512	4	3'-0"		CURB • RAIL POST - HORIZ.
S413	4	4'-9"		CURB - HORIZ.
S614	8	16'-7"		SLAB - DIAPH. - HORIZ.
S415	4	11'-2"		ABUTMENT - HORIZ.

**DESIGN DATA**

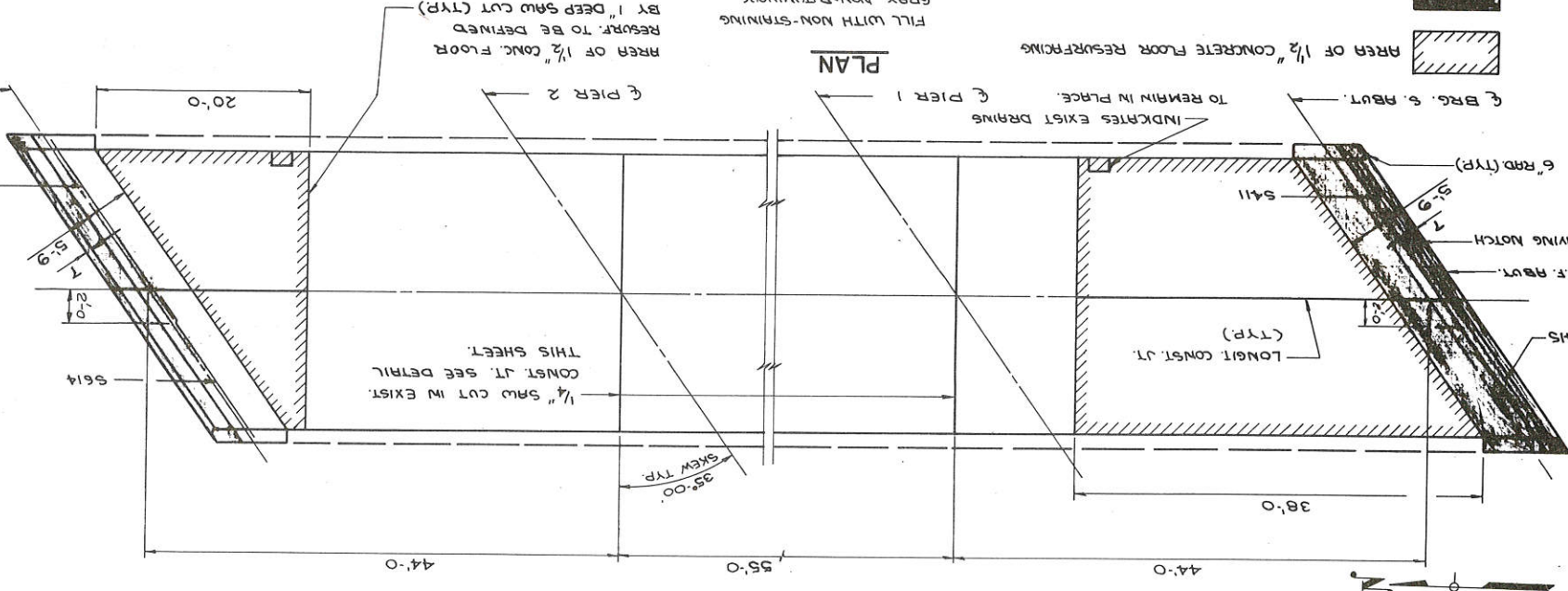
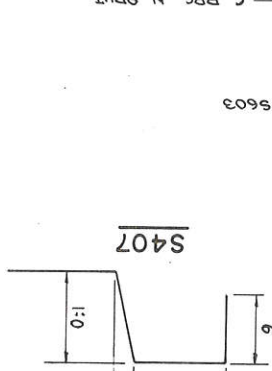
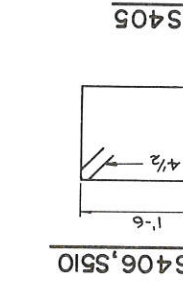
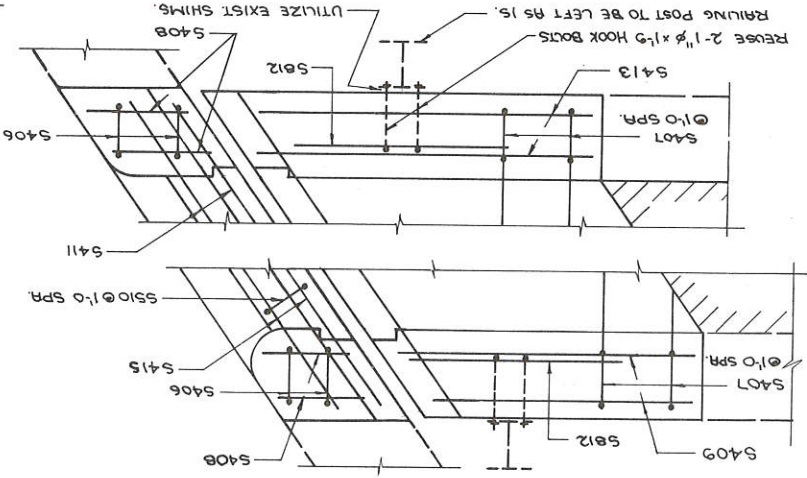
DESIGN RATING \_\_\_\_\_ H20  
 INVENTORY RATING \_\_\_\_\_ H20  
 OPERATIONAL RATING \_\_\_\_\_ HS43

**TOTAL ESTIMATED QUANTITIES**

115 SY CONCRETE FLOOR RESURFACING  
 45 SY FULL DEPTH JOINT REPAIR  
 1530 LB HIGH STRENGTH BAR STEEL REINFORCEMENT  
 1 L.S. EXPANSION DEVICE - FEL-SPAN T30



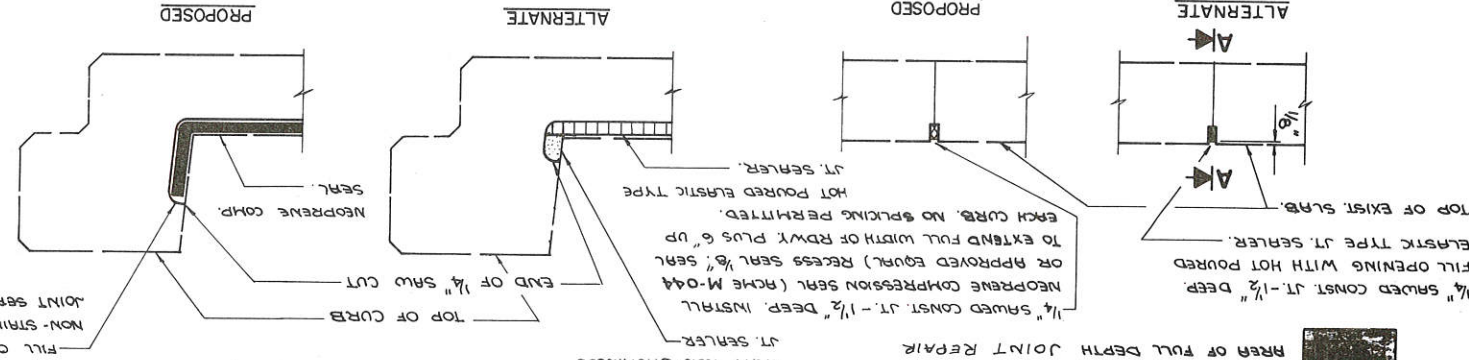
**PART PLAN AT ABUTMENTS**



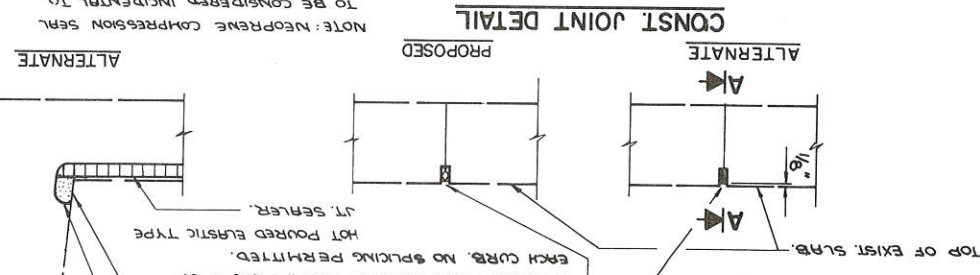
**PLAN**

1/4" SAW CUT IN EXIST. CONST. JT. SEE DETAIL THIS SHEET.  
 35'-00" SKEW TYP.  
 INDICATES EXIST. DRAINAGE TO REMAIN IN PLACE.  
 FILL WITH NON-STRAINING GRAY NON-BITUMINOUS JOINT SEALER.  
 AREA OF 1/2" CONCRETE FLOOR RESURFACING TO BE DEFINED BY 1" DEEP SAW CUT (TYP.)  
 AREA OF 1/2" CONCRETE FLOOR RESURFACING.  
 AREA OF FULL DEPTH JOINT REPAIR.  
 1/4" SAWS CONST. JT. - 1/2" DEEP. INSTALL NEOPRENE COMPRESSION SEAL (ACHE M-044 OR APPROVED EQUIV.) RECESS SEAL 1/8" SEAL TO EXTEND FULL WIDTH OF RWY. PLUS 6" UP EACH CURB. NO SPICING PERMITTED.  
 HOT Poured ELASTIC TYPE JOINT SEALER.  
 TOP OF EXIST. SLAB.  
 FILL OPENING WITH HOT Poured ELASTIC TYPE JOINT SEALER.  
 AREA OF FULL DEPTH JOINT REPAIR.

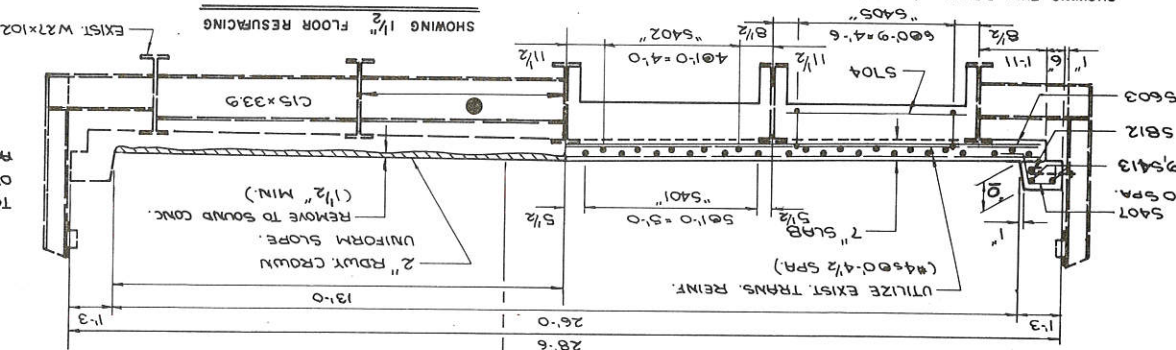
**SECTION A**



**CONST. JOINT DETAIL**

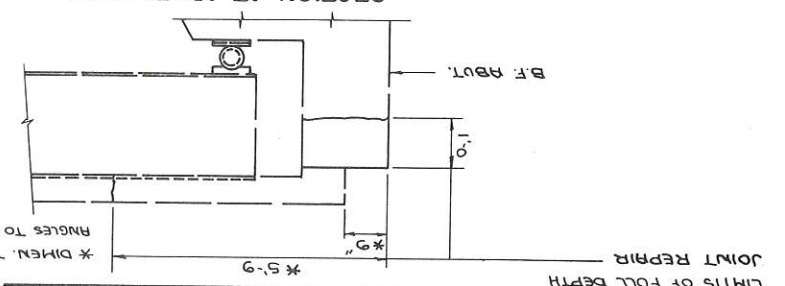


NOTE: NEOPRENE COMPRESSION SEAL TO BE CONSIDERED INCIDENTAL TO "CONCRETE FLOOR RESURFACING" PHASE 2.  
 LINE OF REMOVAL PHASE 1 JOINTS  
 28'-6"  
 26'-0"  
 13'-0"  
 1'-3"



**CROSS SECTION THRU ROADWAY**

**SECTION AT ABUTMENTS (EXISTING)**

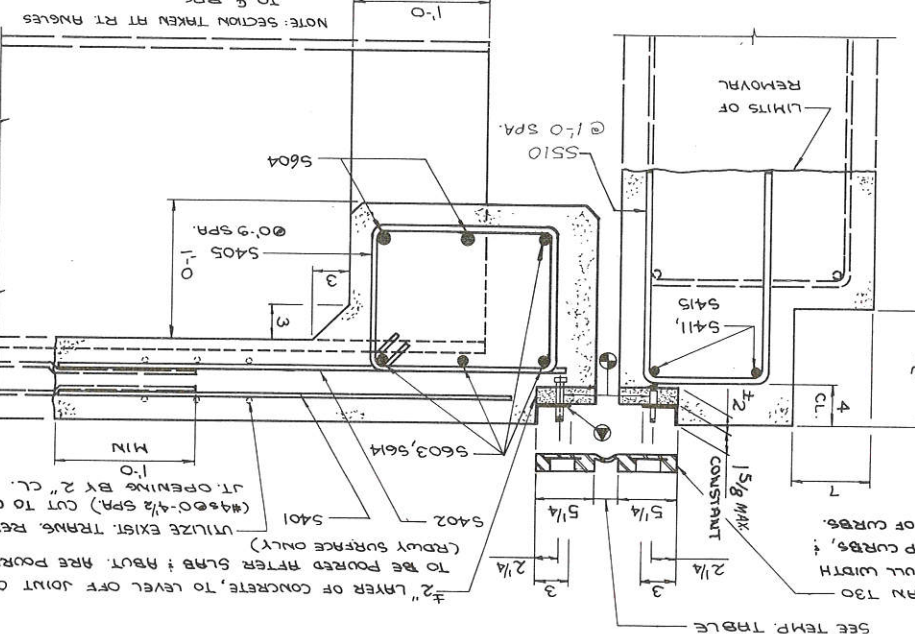


TEMP TABLE

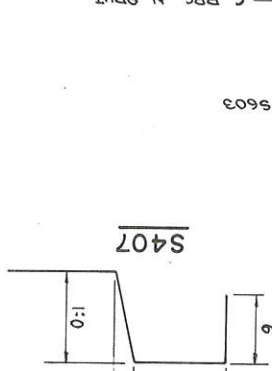
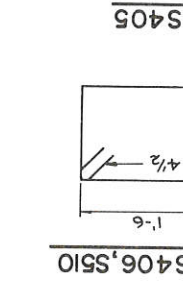
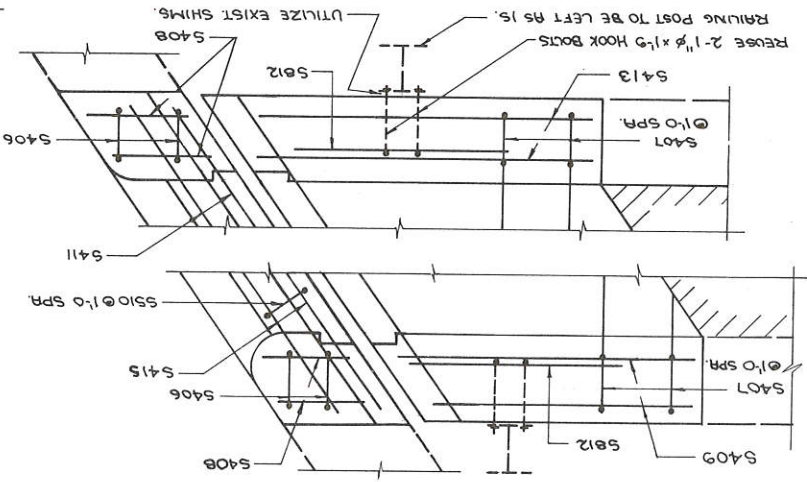
TEMP #	S. ABUT.	N. ABUT.	TEMP. (F°)
30	1 7/8	1 7/8	30
40	1 7/8	1 7/8	40
50	1 7/8	1 7/8	50
60	1 7/8	1 3/4	60
70	1 3/4	1 3/4	70
80	1 3/4	1 1/2	80
90	1 3/4	1 1/2	90
TEMP # S. ABUT. N. ABUT. TEMP. (F°)			

\* SHADED UNDERSIDE DECK  
 \* DIMEN. TAKEN AT RT. ANGLES TO ¶ BRG.  
 \* DIMEN. TAKEN AT RT. ANGLES TO ¶ BRG.  
 \* DIMEN. TAKEN AT RT. ANGLES TO ¶ BRG.  
 \* DIMEN. TAKEN AT RT. ANGLES TO ¶ BRG.

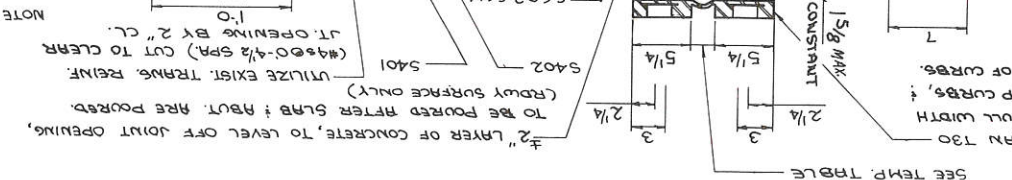
**SECTION THRU PROPOSED JOINT AT ABUTMENTS**



**PART PLAN AT ABUTMENTS**



NOTE: CLEAN BOLT HOLE CAVITY AND FILL CAVITY DEPTH WITH SEALANT AND/OR BOLT HOLE PLUG. CLEAN EXCESS SEALANT FROM SURFACE.



**APPLY SEALANT ALONG BOTTOM AND SIDES OF TROUGH AS RECOMM'D BY MANUFACTURER PRIOR TO PLACING EXPANSION DEVICE. CONCRETE MUST BE FREE OF ALL DEBRIS.**

THREADED ANCHORAGE DEVICES PROVIDED BY MANUF. SHALL BE EITHER EXPANSION TYPE ANCHOR BOLTS OR EPOXY GROUTED TYPE ANCHOR BOLTS. EACH ANCHORAGE DEVICE SHALL HAVE A WASHER AND HEX NUT OR TORQUE NUT. TIGHTEN ALL NUTS TO MANUF. RECOMM'D TORQUE.

(ELASTOMER JOINT RESEALANT TO BE PAID FOR AT BID PRICE FOR "EXPANSION DEVICE")

**FLOOR RESURFACING & JOINT REPAIR**

X 56234 SHEET 1 OF 1

Approved: *L.H. K. Lane* Chief Bridge Engineer  
 Date: 5/25/76

Designed by: CRH  
 Checked by: B.W.  
 Design Spec. \_\_\_\_\_  
 Load \_\_\_\_\_  
 Const. 1975

County: LA CROSSE  
 Village: HOLMEN

US 53 OVER HALFWAY CREEK

**STRUCTURE B-32-5**

DIVISION OF HIGHWAYS  
 DEPARTMENT OF TRANSPORTATION  
 STATE OF WISCONSIN



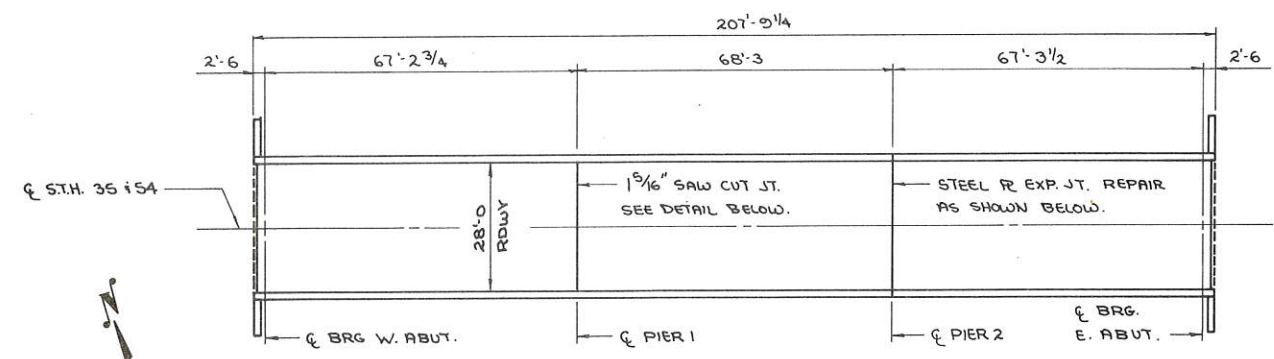
PROJECT ID	0061-64-10	SHEET NUMBER	7.3	TOTAL SHEETS	
FEDERAL PROJECT DESIGNATION					

**DESIGN DATA**

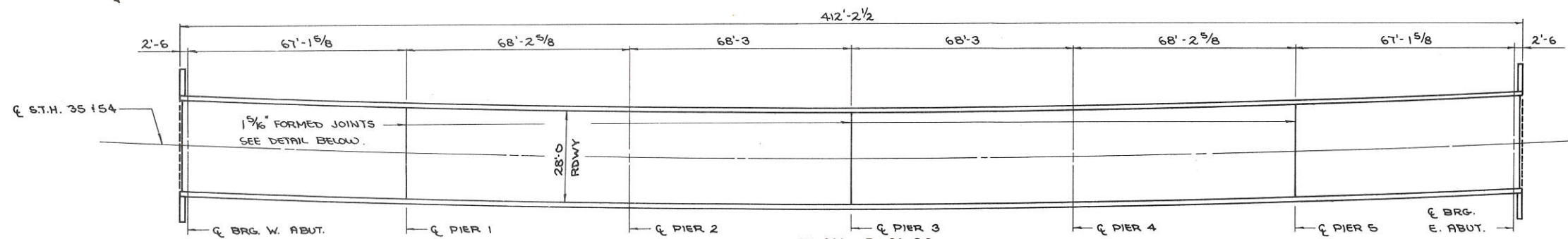
	<u>B-61-28</u>	<u>B-61-29</u>
DESIGN RATING	H20	H20
INVENTORY RATING	H20	H20
OPERATIONAL RATING	HS40	HS40

**TOTAL ESTIMATED QUANTITIES**

	<u>B-61-28</u>	<u>B-61-29</u>	
PREFORMED ELASTOMERIC COMPRESSION JOINT SEAL, 2"	29	87	L.F.
PREFORMED ELASTOMERIC COMPRESSION JOINT SEAL, 3"	31		L.F.
CONCRETE FLOOR RESURFACING	6	28	S.Y.



**PLAN B-61-28**



**PLAN B-61-29**

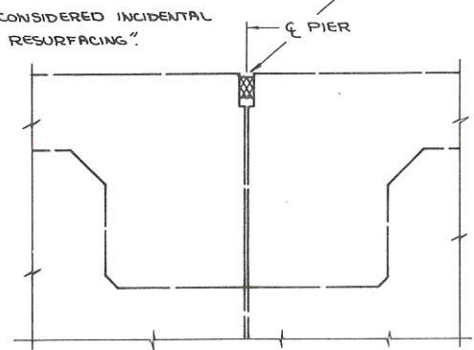
1 5/16" SAW CUT JOINT - 2 3/4" MIN. DEPTH. INSTALL NEOPRENE COMPRESSION SEAL. ACME J-200, H2000 BROWN OR WA 200 WATSON-BOWMAN. RECESS SEAL 1/4" SEAL TO EXTEND FULL WIDTH OF RDWY PLUS 6" UP EACH CURB. NO SPLICING PERMITTED.

SAW CUT TO BE CONSIDERED INCIDENTAL TO "CONC. FLOOR RESURFACING".

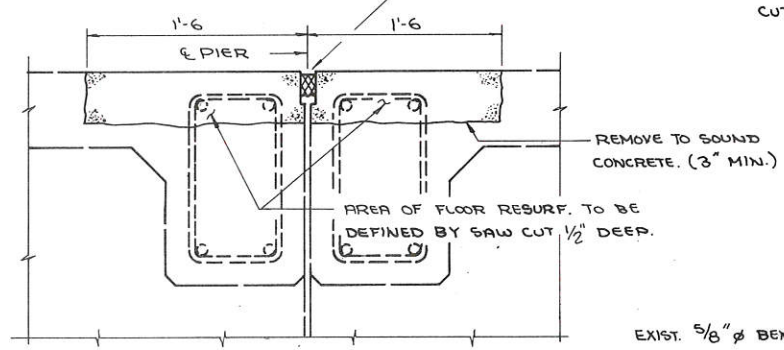
1 5/16" FORMED JOINT - 2 3/4" MIN. DEPTH. INSTALL NEOPRENE COMPRESSION SEAL. ACME J-200, H2000 BROWN OR WA 200 WATSON-BOWMAN. RECESS SEAL 1/4" SEAL TO EXTEND FULL WIDTH OF RDWY PLUS 6" UP EACH CURB. NO SPLICING PERMITTED.

LIMITS OF CONC. FLOOR RESURF. REMOVE EXP. JT. ASSEMBLY, SALVAGE EXIST. REINF. & REUSE. (TO BE DEFINED BY SAW CUT 1/2" DEEP.)

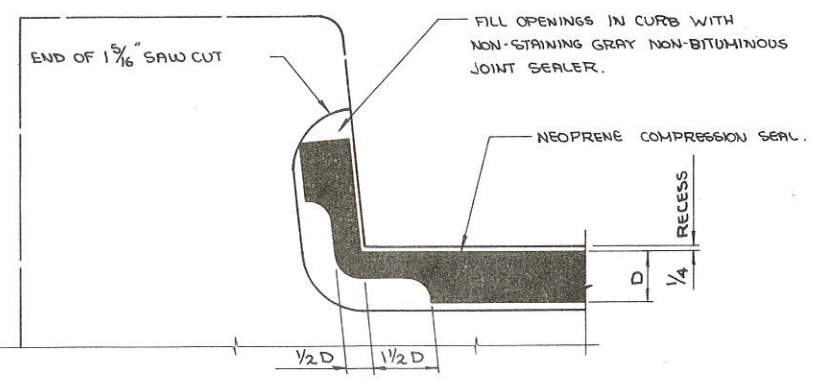
CAP END OF SEAL WITH A SCE-42B CLOSED CELL NEOPRENE SPONGE CONFORMING TO ASTM D1056-67T, 1/2" THICK, CUT TO MATCH THE UNCOMPRESSED SEAL CROSS SECTION; CEMENTED IN PLACE WITH THE LUBRICANT ADHESIVE, OR A FLAP FORMED BY CUTTING AWAY ALL BUT THE TOP SURFACE OF THE SEAL, THEN BENT DOWN; CEMENTED IN PLACE.



**SAW CUT JOINT-PIER I**  
B-61-28

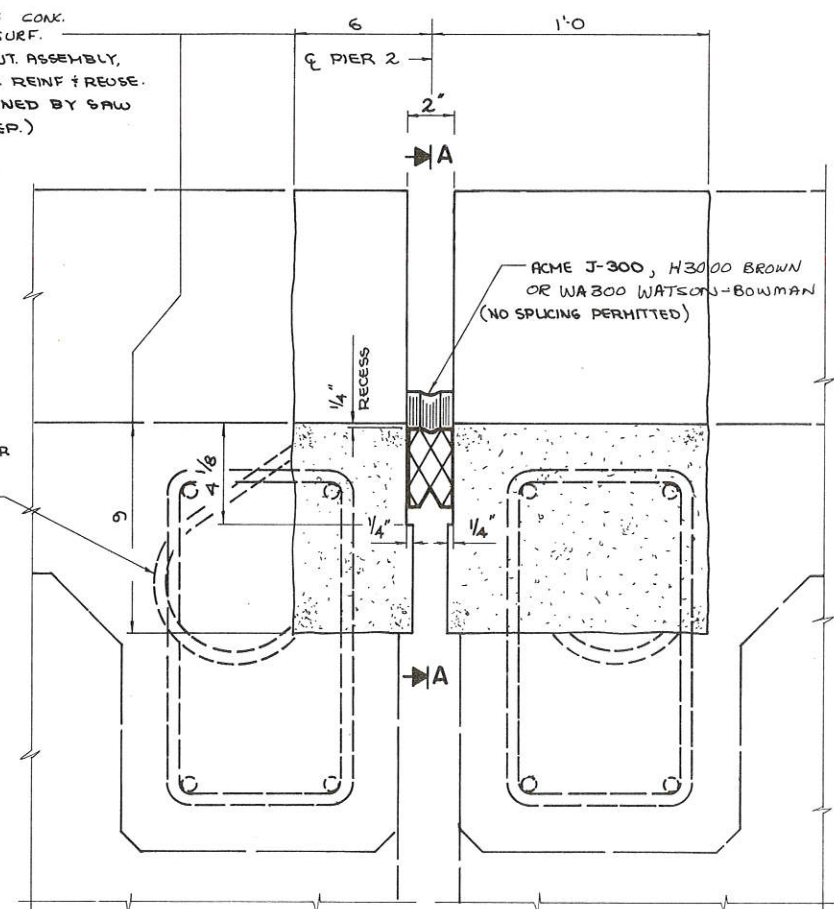


**FORMED JOINT-PIERS 1,3,&5**  
B-61-29

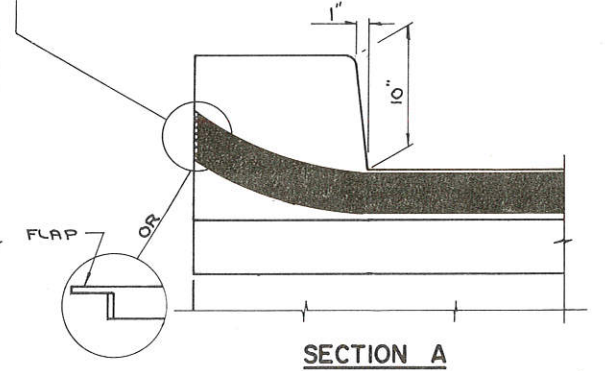


**SECTION THRU SAW CUT AND FORMED JOINT AT CURB**

EXIST. 5/8" Ø BENT ANCHOR BARS. BURN OFF AS REQUIRED.



**SECTION THRU JT. AT PIER 2**  
B-61-28



**SECTION A**

No.	Date	Revision	By
STATE OF WISCONSIN DEPARTMENT OF TRANSPORTATION DIVISION OF HIGHWAYS			
<b>STRUCTURE B-61-28/29</b>			
S.T.H. 35 & 54 OVER TREMPLEALEAU R./PINE CREEK			
County	TREMPLEALEAU	City/Township	TN: TREMPLEALEAU
Design Spec.		Load	Const. Spec. 1975
Designed By	CRH	Drawn By	CRH
Checked		Checked	B.W.
Approved	W. A. Keline		5/25/76
	Chief Bridge Engineer		Date
<b>JOINT REPAIR</b>			SHEET 1 OF 1
			X 56160



**CONCRETE OVERLAY**  
**8 JOINT DETAILS**  
 SHEET 1 OF 2  
 X 56235

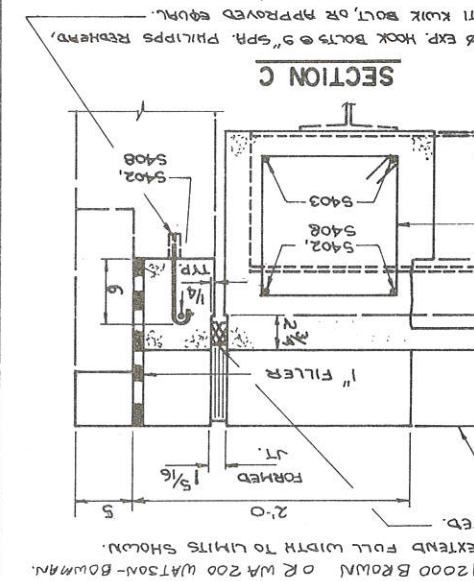
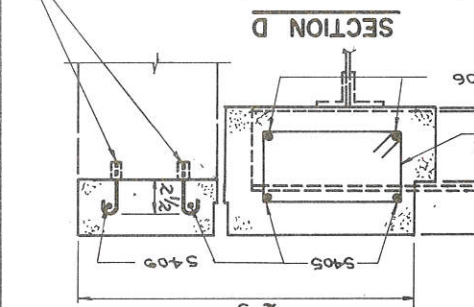
Approved: *U. H. Kline*  
 Chief Bridge Engineer  
 Date: 5/25/76

By: *B. W.*  
 Design CRH  
 Design MSR  
 Design Spec.  
 Date: 1976

City: TREMPALEAU  
 State: WISCONSIN  
 Division: DIVISION OF HIGHWAYS  
 Project: STRUCTURE B-61-947  
 Location: USH 53 OVER BEAVER CREEK

**LIST OF DRAWINGS**

1. CONCRETE OVERLAY & JOINT DETAILS - X56235  
 2. FLOOR DRAIN DETAILS - X56236



**BILL OF BARS**

MARK	NO.	LENGTH	BENT	LOCATION
S401	120	4'-6"	X	DIPHT. JOINTS SPAN 1+4
S402	18	14'-1"	-	-
S403	160	2'-3"	-	-
S404	64	3'-6"	X	-
S405	36	4'-0"	-	-
S406	64	1'-6"	-	-
S407	120	4'-10"	X	SPAN 2+3
S408	18	16'-0"	-	-
S409	4	3'-2"	-	ABUTS - BACKWALL

**DESIGN DATA**

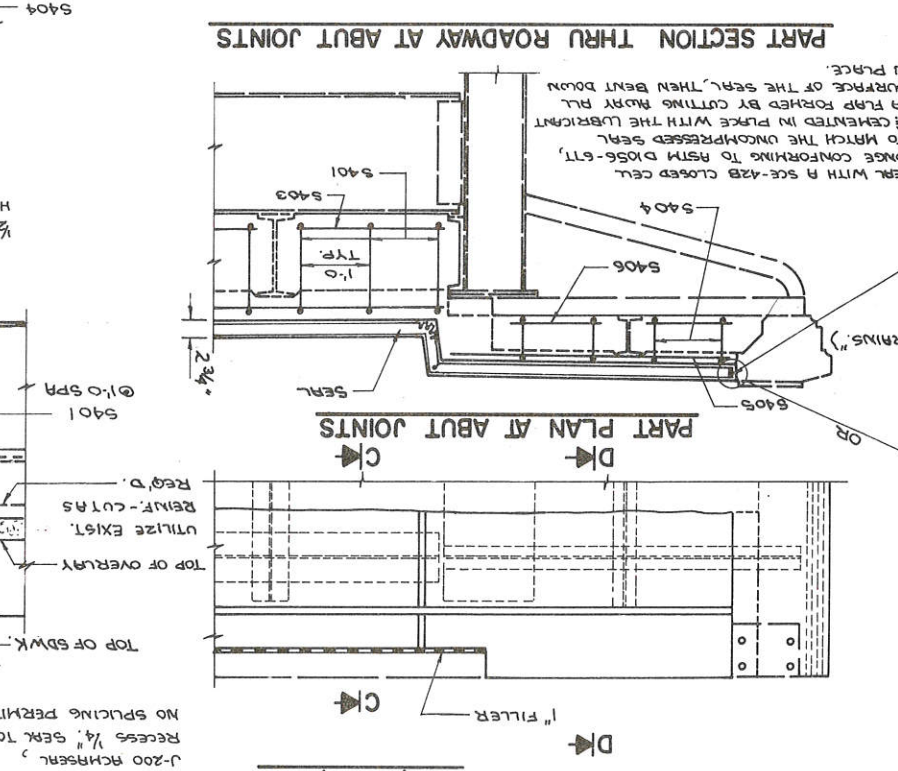
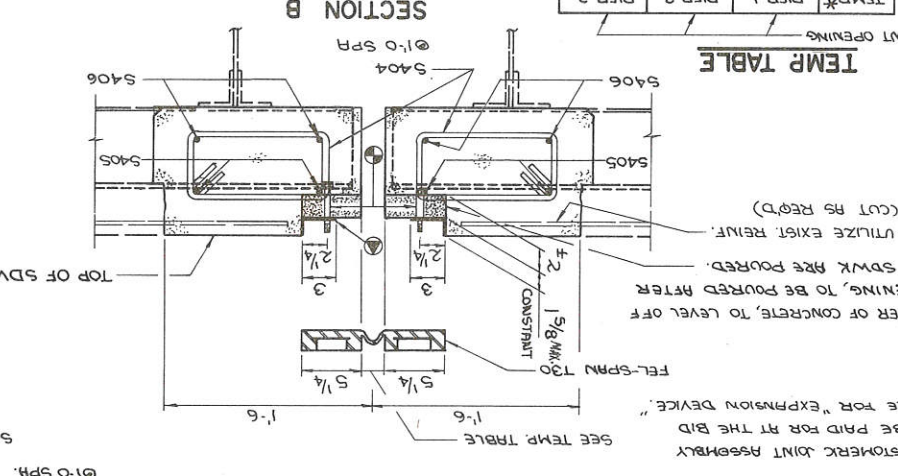
DESIGN RATING	H22
INVENTORY RATING	H21
OPERATIONAL RATING	H30

NOTE: ALL DIMENSIONS IN BENDING ARE CUT TO OUT OF BAR. THE FIRST DIGIT OF A BAR MARK SIGNIFIES THE BAR SIZE.

**TEMP TABLE**

TEMP*	PIER 1	PIER 2	PIER 3
30	1 1/8	1 3/8	1 5/8
40	1 1/8	1 3/4	1 5/8
50	1 1/8	1 3/4	1 5/8
60	1 1/8	1 3/4	1 5/8
70	1 1/2	1 3/4	1 5/8
80	1 1/2	1 3/4	1 5/8
90	1 1/2	1 3/4	1 5/8
100	1 1/2	1 3/4	1 5/8

\* SHADDED UNDERSIDE DECK TEMPERATURE (F)  
 HEX NUT OR TORQUE NUT, TIGHTEN BY NOTE TO MANUF. RECORD'S TORQUE.  
 ANCHORAGE DEVICE SHALL HAVE A WASHER AND OR EPOXY GRADED TYPE ANCHOR BOLTS. EACH SHALL BE EITHER EXPANSION TYPE ANCHOR BOLTS OR THREADED ANCHORAGE DEVICES PROVIDED BY MANUF. EXCESS SEALANT FROM SURFACE.  
 WITH SEALANT RND/OR BOLT HOLE PLUG. CLEAN NOTE: CLEAN BOLT HOLE CAVITY AND FILL CAVITY DEPTH



**TOTAL ESTIMATED QUANTITIES**

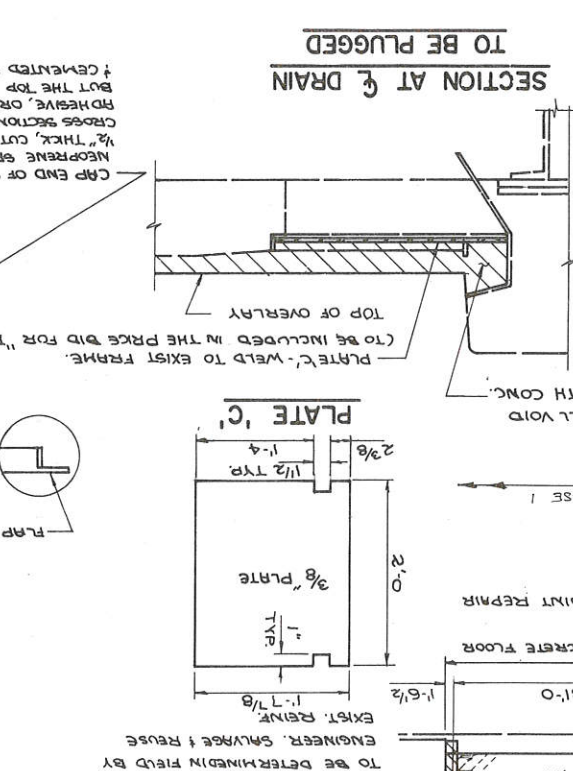
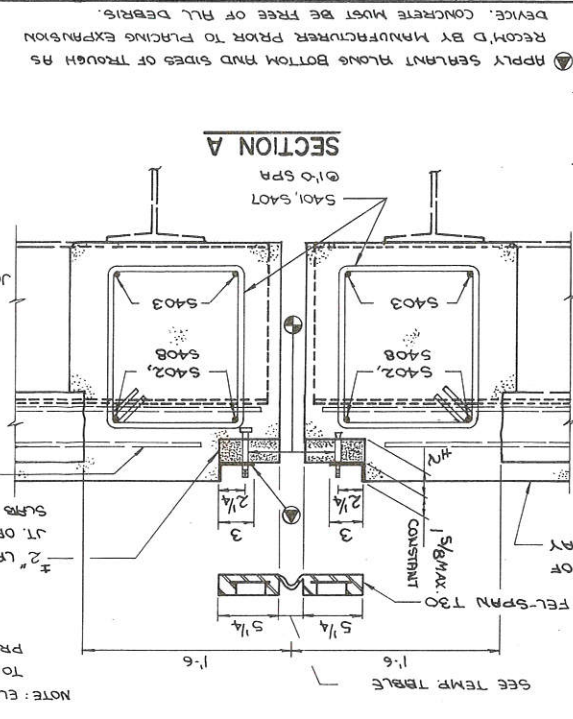
ITEMS	QUANTITY
CONCRETE FLOOR OVERLAY, 1 1/2" MIN.	1216 SY.
FULL DEPTH FLOOR REPAIR	8 SY.
FLOOR DRAINS, TYPE 'B'	4 EA.
EXPANSION DEVICE, FEL-SPAN T30	1 L.S.
HIGH STRENGTH BAR STEEL REINFORCEMENT	1670 LB.
FULL DEPTH JOINT REPAIR	53 SY.
PREFORMED ELASTOMERIC COMPRESSION JOINT SEAL, 2"	74 L.F.
1/2" EXPANSION HOOK BOLTS	98 EA.

**NON-BID ITEMS**

- REPAIR: AREA (APPROX 8 S.Y.) TO BE DETERMINED IN FIELD BY ENGINEER, SALVAGE & REUSE EXIST. REINF.

**BID ITEMS**

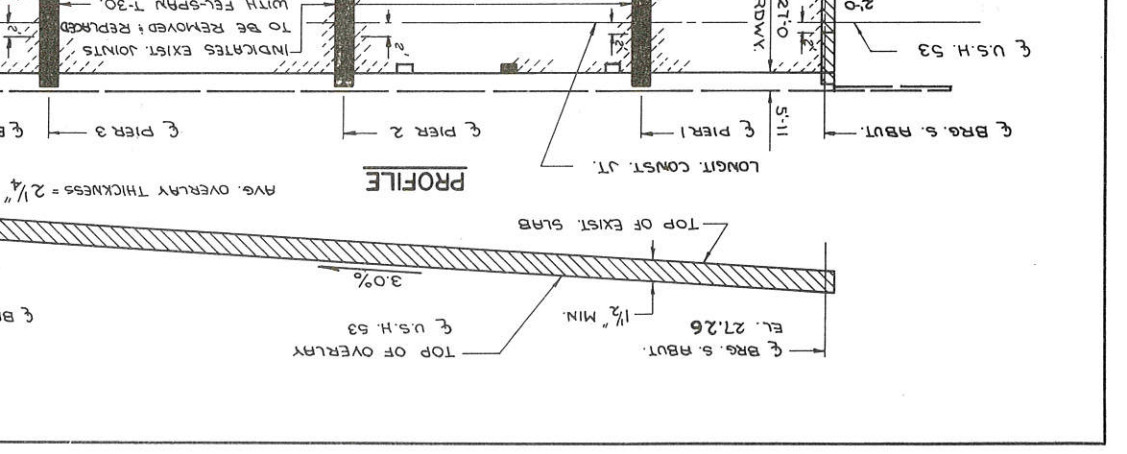
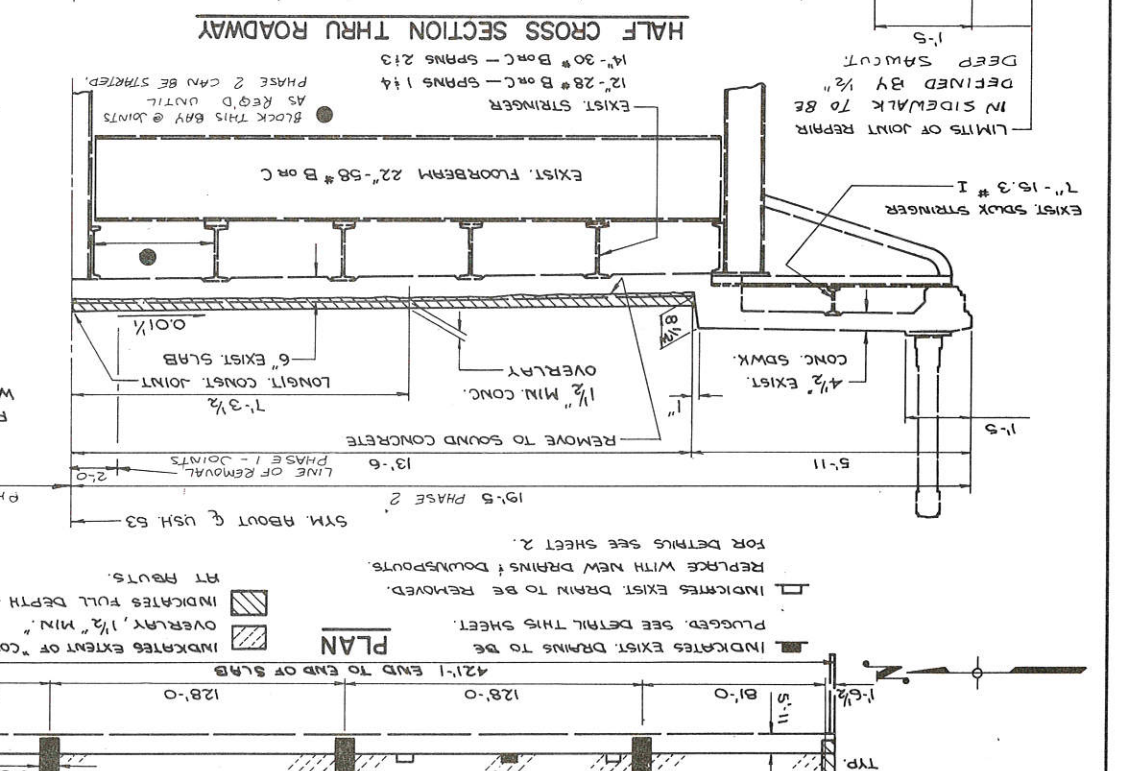
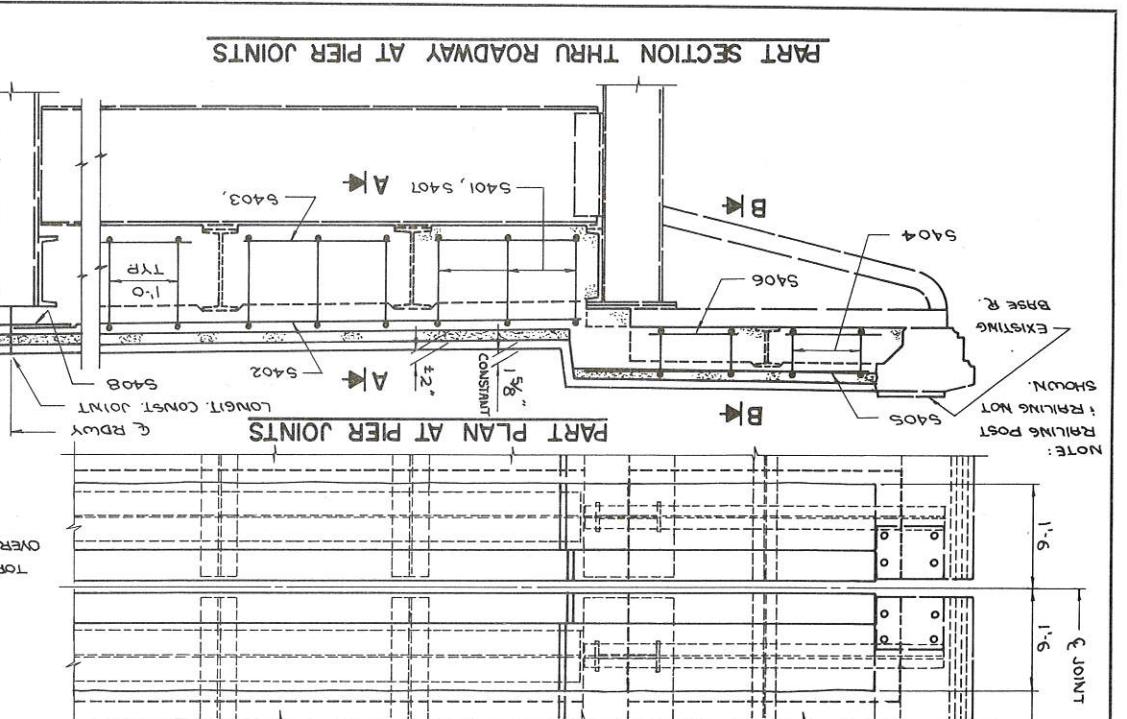
- CONCRETE FLOOR OVERLAY, 1 1/2" MIN.
- FULL DEPTH FLOOR REPAIR
- FLOOR DRAINS, TYPE 'B'
- EXPANSION DEVICE, FEL-SPAN T30
- HIGH STRENGTH BAR STEEL REINFORCEMENT
- FULL DEPTH JOINT REPAIR
- PREFORMED ELASTOMERIC COMPRESSION JOINT SEAL, 2"
- 1/2" EXPANSION HOOK BOLTS



**DESIGN DATA**

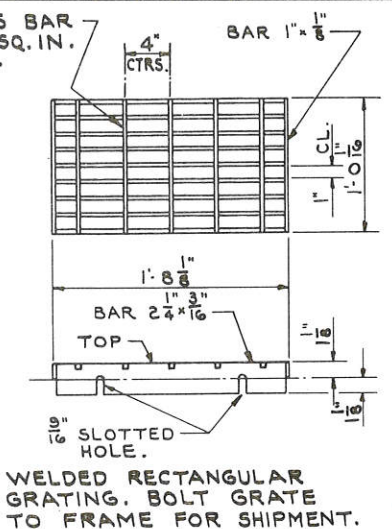
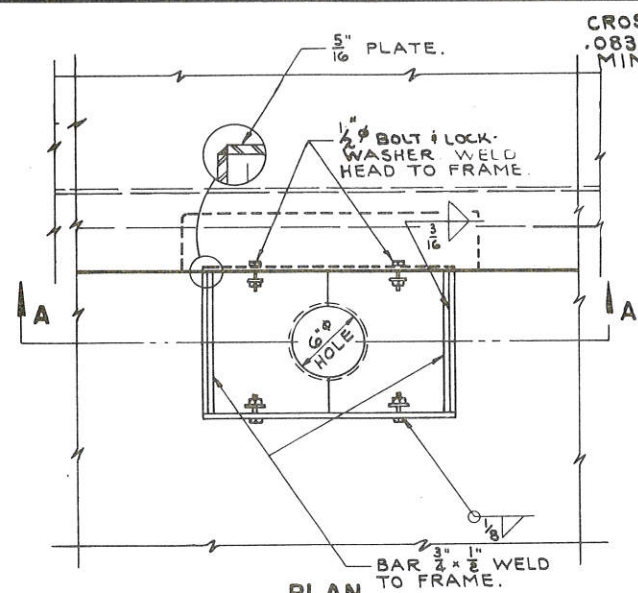
DESIGN RATING	H22
INVENTORY RATING	H21
OPERATIONAL RATING	H30

NOTE: ALL DIMENSIONS IN BENDING ARE CUT TO OUT OF BAR. THE FIRST DIGIT OF A BAR MARK SIGNIFIES THE BAR SIZE.



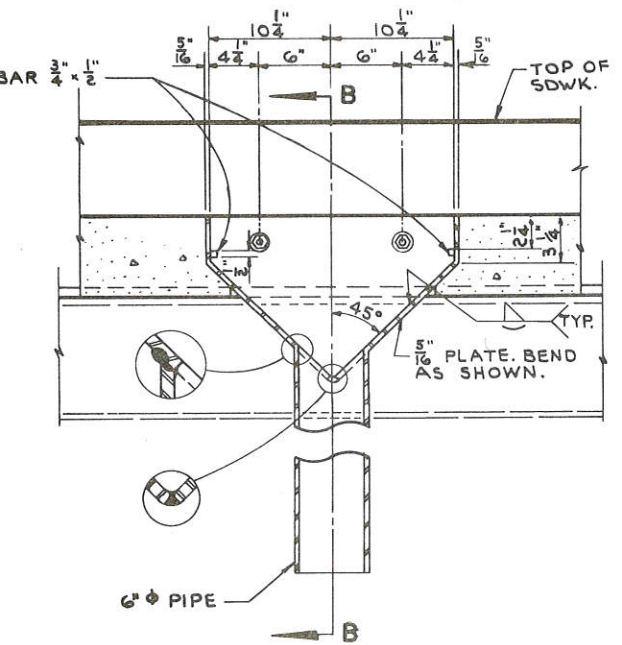


B. P. R. DIVISION	PROJECT	SHEET NO.	TOTAL SHEETS
4	0061-64-10	7.5	

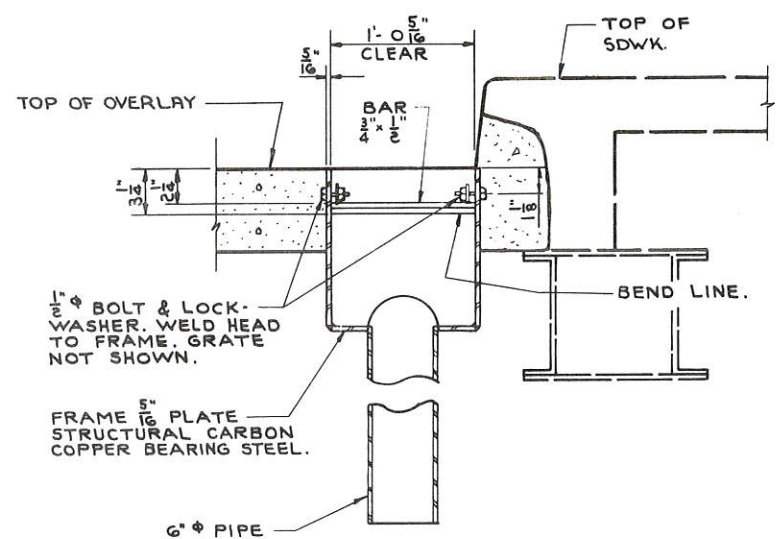


WELDED RECTANGULAR GRATING, BOLT GRATE TO FRAME FOR SHIPMENT.

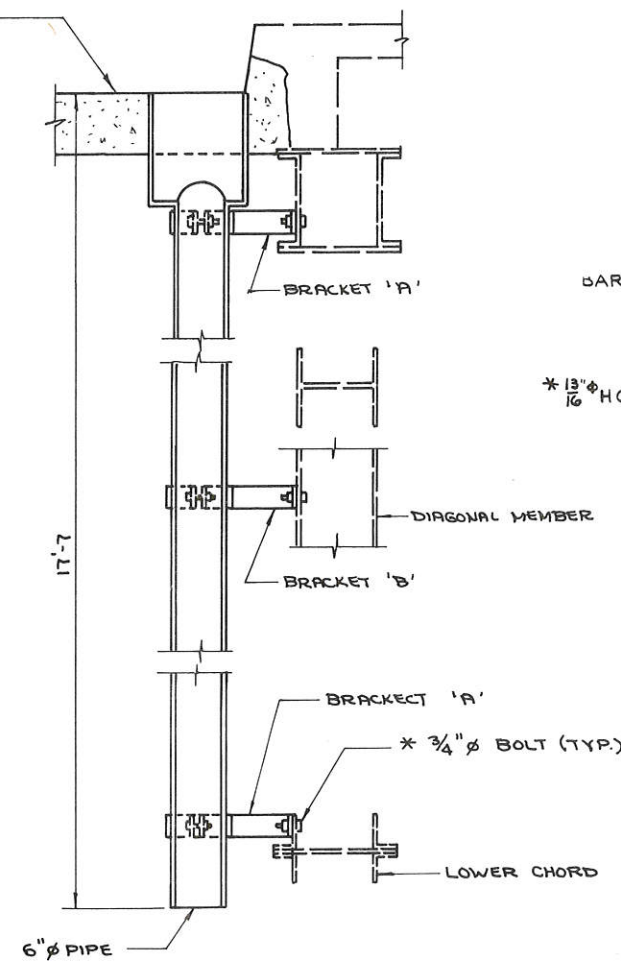
**GRATE**



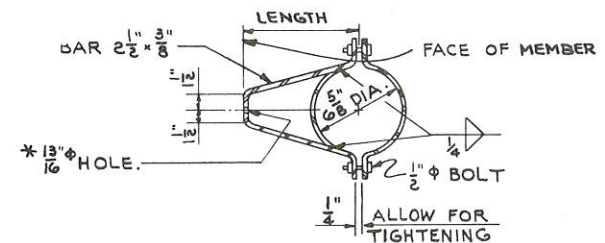
**SECTION A**



**SECTION B**



**SECTION THRU DOWNSPOUT**

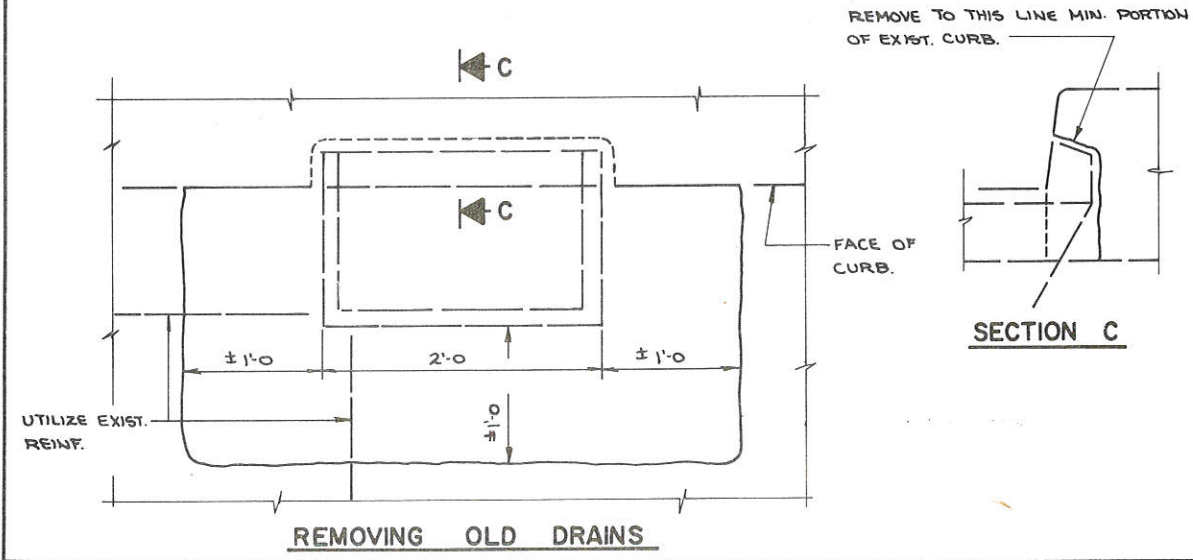


**SECTION THRU BRACKET 'A' & 'B'**

\* BRACKET MAY BE FIELD WELDED IN LIEU OF BOLTING.

BRACKET	LENGTH	NO. REQ'D
'A'	1'-0 3/4"	8
'B'	1'-1 1/4"	4

**FLOOR DRAIN TYPE "A"**



**SECTION C**

NOTE: WELDS ON COPPER BEARING STEEL SHALL BE MADE WITH LOW HYDROGEN ELECTRODES.

No.	Date	Revision	By
STATE OF WISCONSIN DEPARTMENT OF TRANSPORTATION DIVISION OF HIGHWAYS			
<b>STRUCTURE B-61-947</b>			
Const. Spec. 1975	Drawn By CRH	Plans Checked B.W.	
<b>FLOOR DRAIN DETAILS</b>		SHEET 2 OF 2 X 56236	



Plan 234