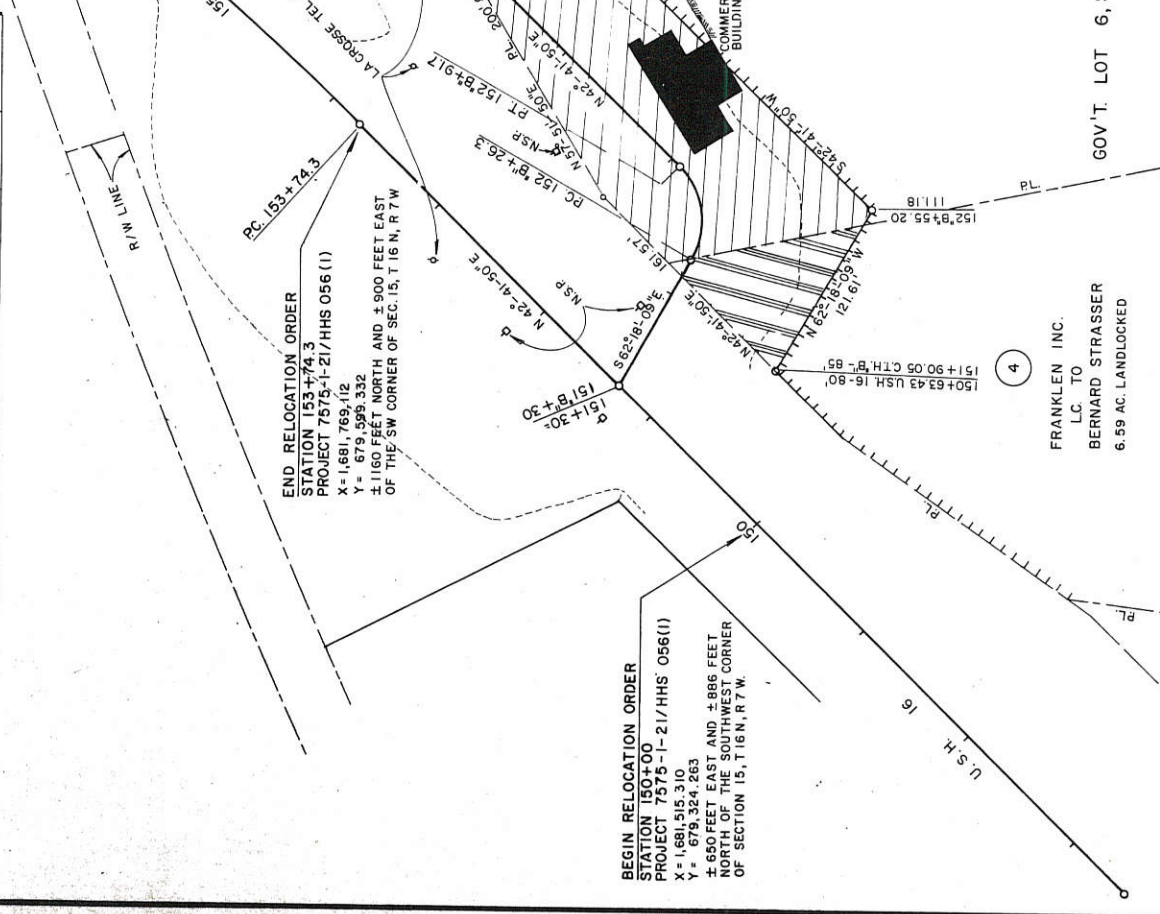


PARCEL NUMBER	SHEET NUMBER	OWNER	INTEREST	L.H.E. ACRES	ACRES REQUIRED	TOTAL REMAINING ACRES	OPERATIONS PROJECT I.D.
1	4.0	BERNARD STRASSER, ET AL.	FEE & ACCESS RIGHTS	0.93	0.93	8.87	7575-01-E1
2	"	WILLARD C. REUSCH	FEE SIMPLE	0.17	-0.17	1.45	"
3	"	EMMA REUSCH, ET AL.	"	0.03	0.39	0.42	"
4	"	BERNARD STRASSER, ET AL.	FEE & ACCESS RIGHTS	0.13	0.13	6.59	"



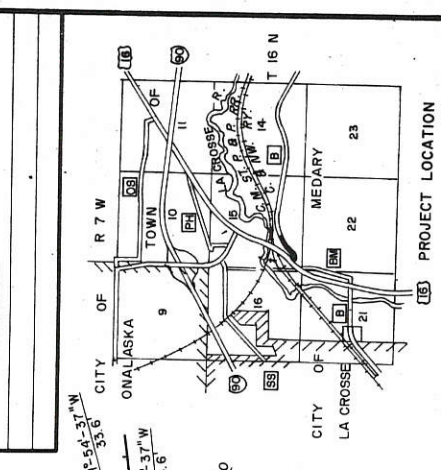
R/W PROJECT NUMBER
7575-1-21

FEDERAL PROJECT NUMBER
HHS 056 (I)

PLAT OF RIGHT OF WAY REQUIRED FOR
LA CROSSE - WEST SALEM ROAD
(INTERSECTION U.S.H. 16 AND C.T.H. "B")
U.S.H. 16
LA CROSSE COUNTY

SCALE 1" = 50'

CONSTRUCTION PROJECT NUMBER



PROJECT LENGTH:
U.S.H. 16 0.071
C.T.H. "B" 0.198
TOTAL 0.269 MILES

BEARING ORIENTATION AND GRID CONVERSION
COORDINATES AND RIGHT OF WAY PLAT BEARINGS ARE ORIENTED TO THE
NAD 83 COORDINATE SYSTEM WITH 0 DEGREES, 0 MINUTES, 0 SECONDS BEING
GRID NORTH. BEARINGS AND DISTANCES ON THIS PLAT ARE BEARINGS REPRESENT
PLANE ANGLES IN DEGREES, MINUTES AND SECONDS TO THE NEAREST SECOND.
R/W PLAT DISTANCES ARE GROUND LENGTHS UNLESS OTHERWISE NOTED AND MAY
BE CONVERTED TO GRID LENGTHS BY MULTIPLYING PLAT DISTANCES BY 0.99992270

STATE OF WISCONSIN
DEPARTMENT OF TRANSPORTATION
DIVISION OF HIGHWAYS

Correct

Date 11-7-77

Recommended for Approval:

Date 11/10/77

Approved:

Chief of Facilities Development

Director, Bureau of Right of Way

U.S. DEPARTMENT OF TRANSPORTATION
FEDERAL HIGHWAY ADMINISTRATION
REGION 5 WISCONSIN DIVISION

Approved:

END RELOCATION ORDER
STATION 153+74.3
PROJECT 7575-1-21/HHS 056 (I)
X = 1,681,769.112
Y = 679,599.332
± 1160 FEET NORTH AND ± 900 FEET EAST
OF THE SW CORNER OF SEC. 15, T 16 N, R 7 W

BEGIN RELOCATION ORDER
STATION 150+00
PROJECT 7575-1-21/HHS 056 (I)
X = 1,681,515.310
Y = 679,324.263
± 650 FEET EAST AND ± 886 FEET
NORTH OF THE SOUTHWEST CORNER
OF SECTION 15, T 16 N, R 7 W

EMMA REUSCH, ET AL.
1.48 (TOTAL)
(338 R 506)

C.T.H. "B"

EMMA REUSCH, ET AL.
0.69 AC. (TOTAL)

WILLARD C. REUSCH
1.62 AC. (TOTAL)
(234 R 610)

NORBERT J. SCHMIDT
L.C. TO
BERNARD STRASSER

FRANKLEN INC.
L.C. TO
BERNARD STRASSER
6.59 AC. LANDLOCKED

NO ACCESS (ACQUISITION)

SE CORNER GOV'T. LOT 6
X = 1,682,188.882
Y = 678,438.457 (3" IRON PIPE)

EMMA REUSCH, ET AL.
1.48 (TOTAL)
(338 R 506)

C.T.H. "B"

EMMA REUSCH, ET AL.
0.69 AC. (TOTAL)

WILLARD C. REUSCH
1.62 AC. (TOTAL)
(234 R 610)

NORBERT J. SCHMIDT
L.C. TO
BERNARD STRASSER

FRANKLEN INC.
L.C. TO
BERNARD STRASSER
6.59 AC. LANDLOCKED

NO ACCESS (ACQUISITION)

SE CORNER GOV'T. LOT 6
X = 1,682,188.882
Y = 678,438.457 (3" IRON PIPE)

GOV'T. LOT 6, SEC. 15, T 16 N, R 7 W.

GOV'T. LOT 7, SEC. 15, T 16 N, R 7 W