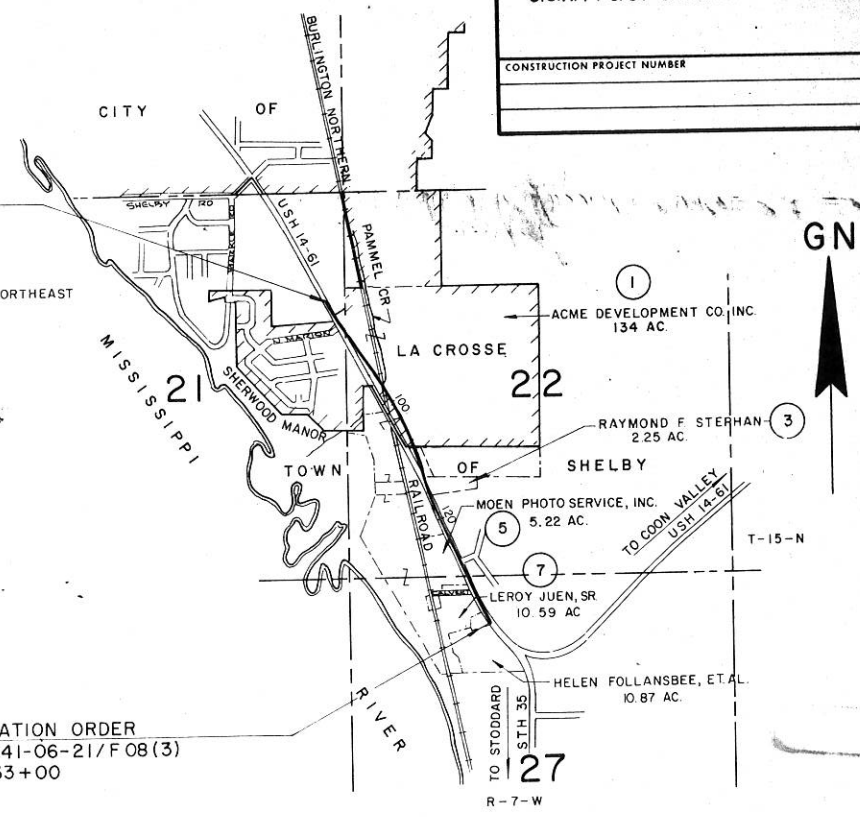


SCHEDULE OF LANDS AND INTERESTS REQUIRED									
PARCEL NUMBER	SHEET NUMBER	OWNER	INTEREST	L.H.E. ACRES	ACRES REQUIRED			TOTAL REMAINING ACRES	OPERATIONS PROJECT I.D.
					NEW	EXIST	TOTAL		
1	4,2,4,3	ACME DEVELOPMENT CO.	FEE SIMPLE		5.32	--	5.32	128.68	1641-06-21
2	4,3,4,4	WILLIAM J. SCHIECHE	FEE & L.H.E.	0.02	0.63	--	0.63	1.53	"
3	4,4	RAYMOND F. STEPHAN	FEE SIMPLE		0.01	--	0.01	2.24	"
4	"	CARL R. SCHLICHT	L.H.E.	0.09					"
5	4,4,4,5	MOEN PHOTO SERVICE	FEE SIMPLE		0.11	--	0.11	5.11	"
6	4,5	ROY E. JUEN	"		0.08		0.08	0.82	"
7	"	LE ROY JUEN, SR.	"		0.51	--	0.51	10.08	"
8	4,2	CITY OF LA CROSSE (WATER UTILITY)	RELEASE OF RIGHTS						1641-06-40
9	4,2,4,3	CITY OF LA CROSSE (SANITARY SEWAGE UTILITY)	RELEASE OF RIGHTS						1641-06-41
10	4,3,4,4	NORTHERN STATES POWER CO.	"						1641-06-42
11	4,3	LA CROSSE TEL. CO.	"						1641-06-43
12	4,2,4,3	CITY OF LA CROSSE (STORM SEWER)	RELEASE OF RIGHTS						1641-06-44
13	4,3	BURLINGTON NORTHERN RAILROAD	AGREEMENT						1641-06-21
14	4,3	NORTHERN STATES POWER CO.	RELEASE OF RIGHTS						1641-06-42
1-01	4,2	COLLINS-LA CROSSE SIGN CORP.	SIGN ACQUISITION						1641-06-21
1-02	"	HOESCHLER REALTY CORP.	"						"
1-03	4,3	COLLINS-LA CROSSE SIGN CORP.	"						"
2-01	4,4	COLLINS-LA CROSSE SIGN CORP.	"						"

R/W PROJECT NUMBER	1641-06-21	SHEET NUMBER	4.0	TOTAL SHEETS	
FEDERAL PROJECT NUMBER	F 08 (3)	PLAT OF RIGHT OF WAY REQUIRED FOR LA CROSSE - COON VALLEY ROAD U.S.H. 14 & 61 S.T.H. 35 LACROSSE CO.			
CONSTRUCTION PROJECT NUMBER					

BEGIN RELOCATION ORDER
PROJECT 1641-06-21/F 08(3)
STATION 85+00
X = 1,680,398.74
Y = 645,535.87
± 1470 FEET SOUTH AND ± 60 FEET WEST OF THE NORTHEAST CORNER OF SECTION 21, T 15 N, R 7 W.

END RELOCATION ORDER
PROJECT 1641-06-21/F 08(3)
STATION 133+00
X = 1,682,437.15
Y = 641,217.01
± 510 FEET SOUTH AND ± 530 FEET WEST OF THE NORTH ONE-QUARTER CORNER OF SECTION 27, T 15 N, R 7 W.



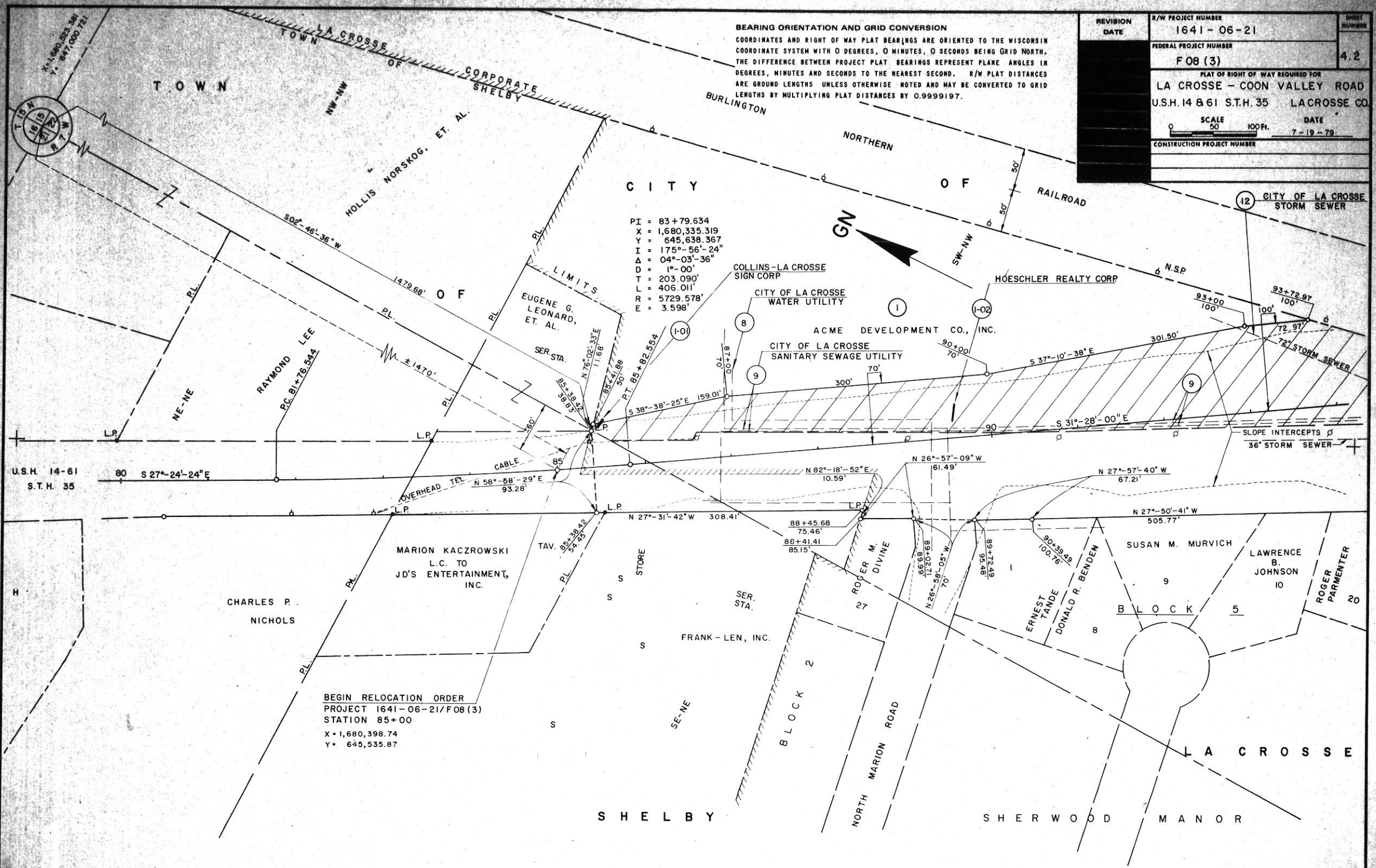
PROJECT LOCATION
PROPERTY BOUNDARIES AND ACREAGES
0 1/2 1 MILE
TOTAL NET CENTERLINE LENGTH = 0.910 MILES

REVISION DATE	STATE OF WISCONSIN DEPARTMENT OF TRANSPORTATION
Approved: Date 7-19-79	<i>T.R. Kueley</i> District Transportation Director
Approved: Date 7/23/79	<i>B.J. Muller</i> Director, Bureau of Real Estate
U.S. DEPARTMENT OF TRANSPORTATION FEDERAL HIGHWAY ADMINISTRATION REGION 5 WISCONSIN DIVISION	
Approved: Date	Division Administrator

ALL COORDINATES SHOWN ON THIS PLAN ARE REFERENCED TO THE WISCONSIN COORDINATE SYSTEM, SOUTH ZONE.

REVISION DATE	R/W PROJECT NUMBER	SHEET NUMBER
	1641-06-21	4.2
	FEDERAL PROJECT NUMBER	
	F08 (3)	
PLAT OF RIGHT OF WAY REQUIRED FOR LA CROSSE - COON VALLEY ROAD U.S.H. 14 & 61 S.T.H. 35 LACROSSE CO.		
	SCALE	DATE
	0 50 100 Ft.	7-19-79
CONSTRUCTION PROJECT NUMBER		

BEARING ORIENTATION AND GRID CONVERSION
 COORDINATES AND RIGHT OF WAY PLAT BEARINGS ARE ORIENTED TO THE WISCONSIN COORDINATE SYSTEM WITH 0 DEGREES, 0 MINUTES, 0 SECONDS BEING GRID NORTH. THE DIFFERENCE BETWEEN PROJECT PLAT BEARINGS REPRESENT PLANE ANGLES IN DEGREES, MINUTES AND SECONDS TO THE NEAREST SECOND. R/W PLAT DISTANCES ARE GROUND LENGTHS UNLESS OTHERWISE NOTED AND MAY BE CONVERTED TO GRID LENGTHS BY MULTIPLYING PLAT DISTANCES BY 0.9999197.



PI = 83+79.634
 X = 1,680,335.319
 Y = 645,638.367
 I = 175°-56'-24"
 Δ = 04°-03'-36"
 D = 1°-00"
 T = 203.090'
 L = 406.011'
 R = 5729.578'
 E = 3.598'

BEGIN RELOCATION ORDER
 PROJECT 1641-06-21/F08 (3)
 STATION 85+00
 X = 1,680,398.74
 Y = 645,535.87

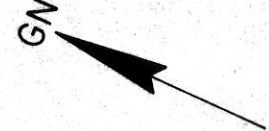
U.S.H. 14-61
 S.T.H. 35
 80 S 27°-24'-24" E

SCALE 0 50 100 Ft.
 DATE 7-19-79

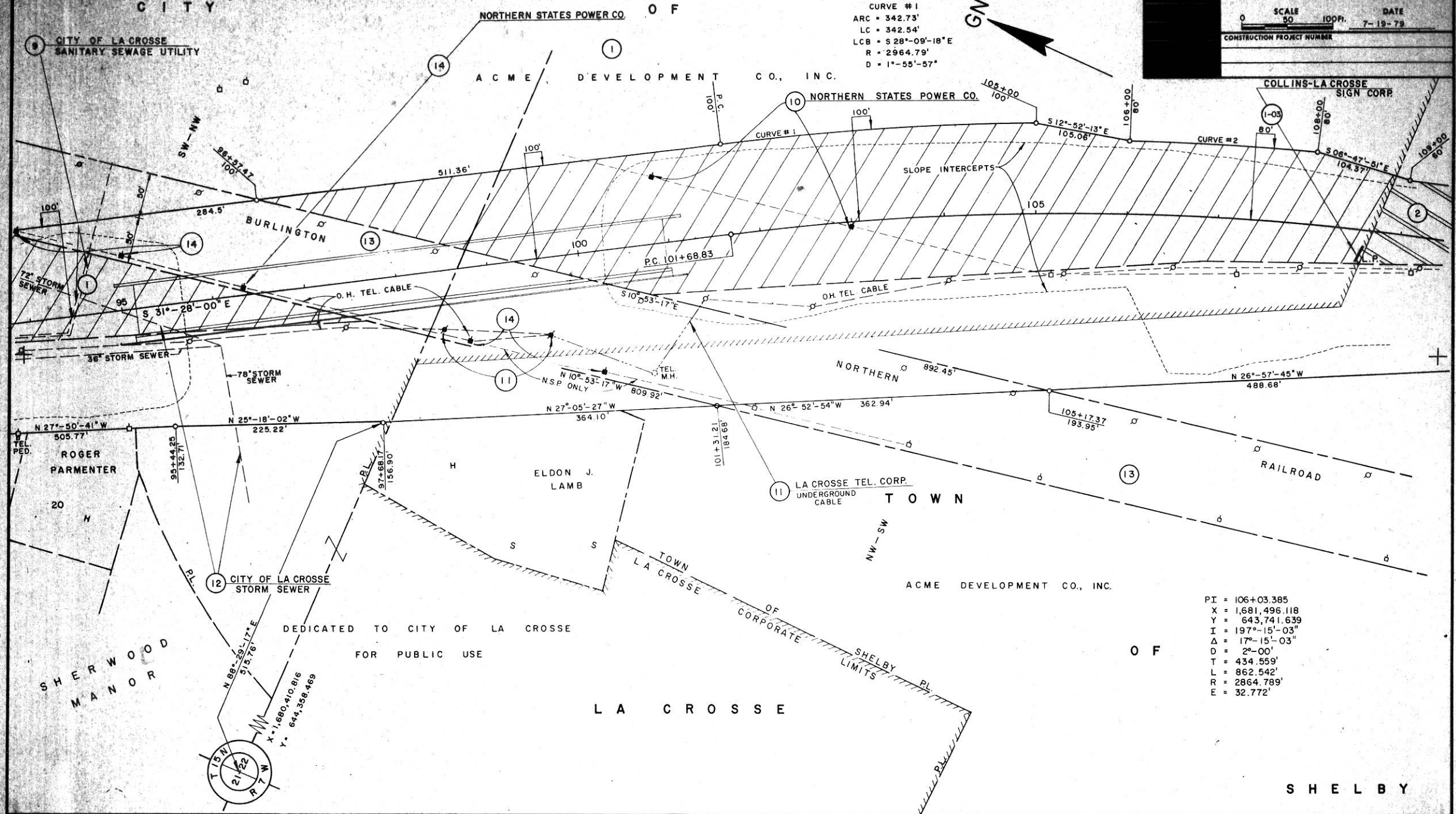
CURVE # 2
 ARC = 205.59'
 LC = 205.54'
 LCB = S 20°-50'-35"E
 R = 2944.79'
 D = 1°-56'-44"

BEARING ORIENTATION AND GRID CONVERSION
 COORDINATES AND RIGHT OF WAY PLAT BEARINGS ARE ORIENTED TO THE WISCONSIN COORDINATE SYSTEM WITH 0 DEGREES, 0 MINUTES, 0 SECONDS BEING GRID NORTH. THE DIFFERENCE BETWEEN PROJECT PLAT BEARINGS REPRESENT PLANE ANGLES IN DEGREES, MINUTES AND SECONDS TO THE NEAREST SECOND. R/W PLAT DISTANCES ARE GROUND LENGTHS UNLESS OTHERWISE NOTED AND MAY BE CONVERTED TO GRID LENGTHS BY MULTIPLYING PLAT DISTANCES BY 0.9999197.

CURVE # 1
 ARC = 342.73'
 LC = 342.54'
 LCB = S 28°-09'-18"E
 R = 2964.79'
 D = 1°-55'-57"



REVISION DATE	R/W PROJECT NUMBER 1641-06-21	PLAT NUMBER 4.3
FEDERAL PROJECT NUMBER F 08 (3)		
PLAT OF RIGHT OF WAY REQUIRED FOR LA CROSSE - COON VALLEY ROAD U.S.H. 14 & 61 S.T.H. 35 LA CROSSE CO.		
SCALE 0 50 100 FT.		DATE 7-19-79
CONSTRUCTION PROJECT NUMBER		



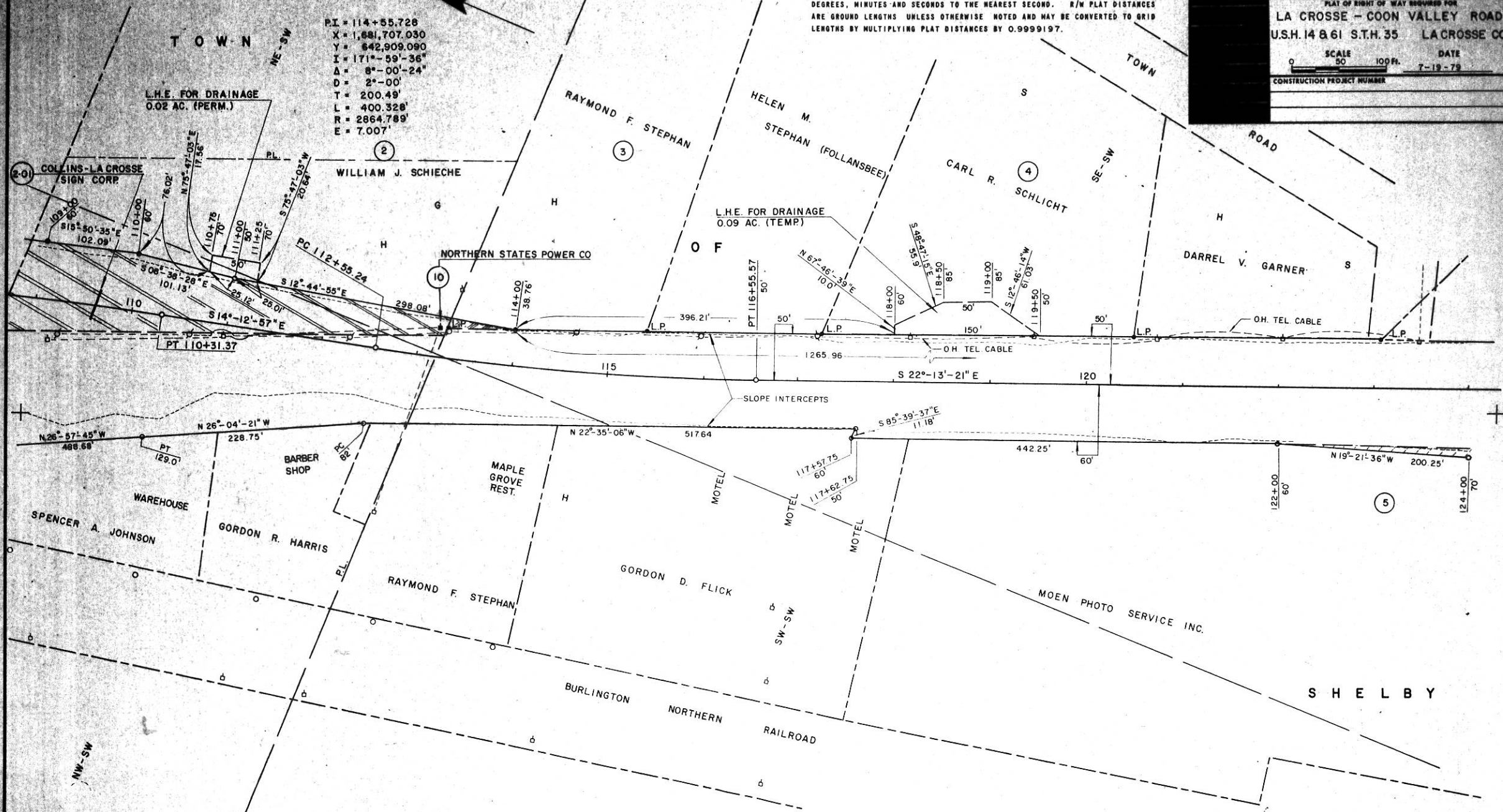
PI = 106+03.385
 X = 1,681,496.118
 Y = 643,741.639
 I = 197°-15'-03"
 Δ = 17°-15'-03"
 D = 2°-00"
 T = 434.559'
 L = 862.542'
 R = 2864.789'
 E = 32.772'



BEARING ORIENTATION AND GRID CONVERSION
 COORDINATES AND RIGHT OF WAY PLAT BEARINGS ARE ORIENTED TO THE WISCONSIN COORDINATE SYSTEM WITH 0 DEGREES, 0 MINUTES, 0 SECONDS BEING GRID NORTH. THE DIFFERENCE BETWEEN PROJECT PLAT BEARINGS REPRESENT PLANE ANGLES IN DEGREES, MINUTES AND SECONDS TO THE NEAREST SECOND. R/W PLAT DISTANCES ARE GROUND LENGTHS UNLESS OTHERWISE NOTED AND MAY BE CONVERTED TO GRID LENGTHS BY MULTIPLYING PLAT DISTANCES BY 0.9999197.

REVISION DATE	R/W PROJECT NUMBER 1641-06-21	SHEET NUMBER 4.4
	FEDERAL PROJECT NUMBER F 08 (3)	
PLAT OF RIGHT OF WAY REQUIRED FOR LA CROSSE - COON VALLEY ROAD U.S.H. 14 & 61 S.T.H. 35 LA CROSSE CO.		
SCALE 0 50 100 FT.		DATE 7-19-79
CONSTRUCTION PROJECT NUMBER		

PI = 114+55.728
 X = 1,681,707.030
 Y = 642,909.090
 I = 171°-59'-36"
 A = 8°-00'-24"
 D = 2°-00'
 T = 200.49'
 L = 400.328'
 R = 2864.789'
 E = 7.007'



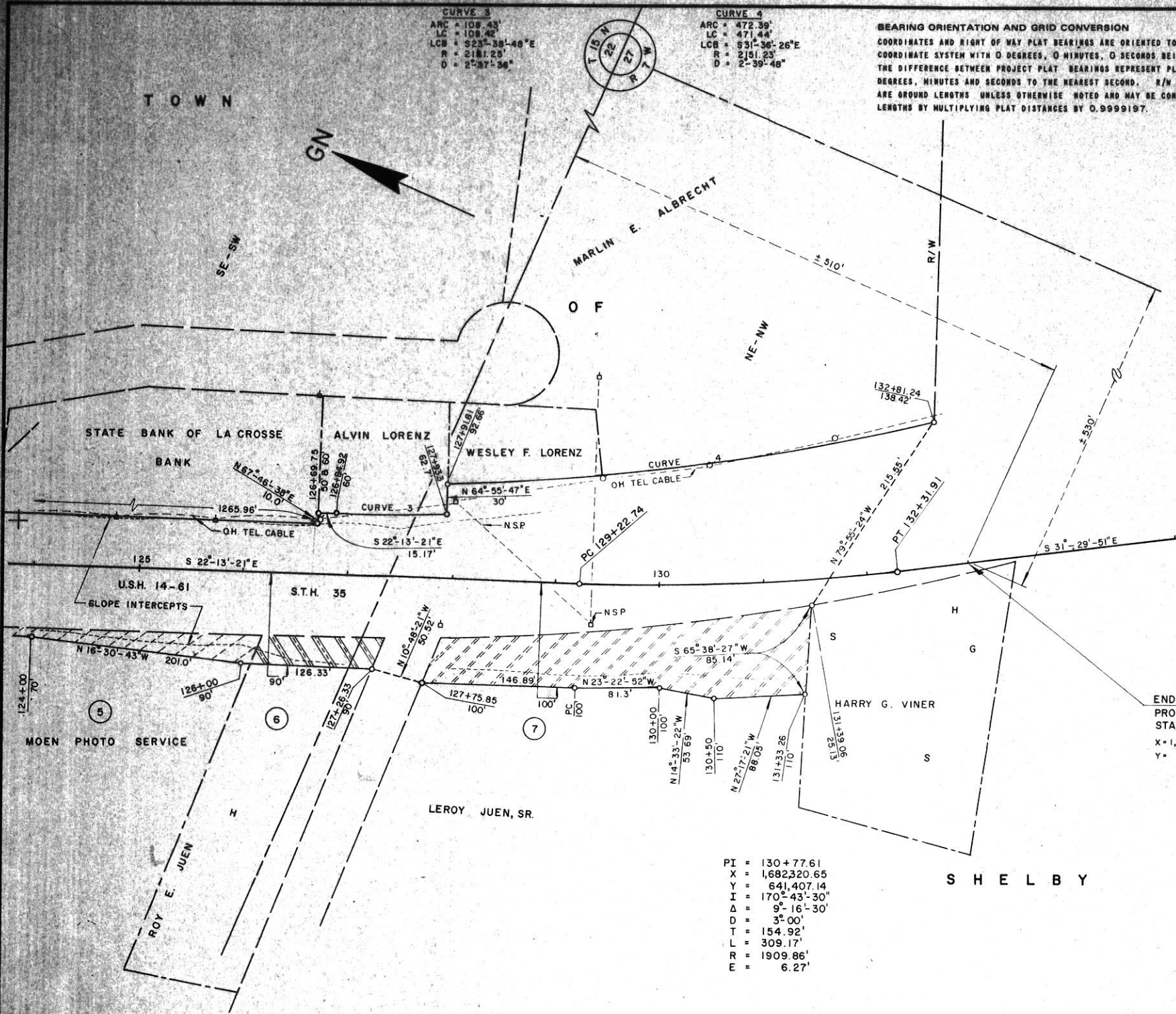
SEC 22, T 15 N, R 7 W

REVISION DATE	R/W PROJECT NUMBER	SHEET NUMBER
	1641-06-21	4.5
FEDERAL PROJECT NUMBER		
F 08 (3)		
PLAT OF RIGHT OF WAY REQUIRED FOR		
LA CROSSE - COON VALLEY ROAD		
U.S.H. 14 861 S.T.H. 35 LA CROSSE CO.		
SCALE	DATE	
0 50 100 FT.	7-19-79	
CONSTRUCTION PROJECT NUMBER		

BEARING ORIENTATION AND GRID CONVERSION
 COORDINATES AND RIGHT OF WAY PLAT BEARINGS ARE ORIENTED TO THE WISCONSIN COORDINATE SYSTEM WITH 0 DEGREES, 0 MINUTES, 0 SECONDS BEING GRID NORTH. THE DIFFERENCE BETWEEN PROJECT PLAT BEARINGS REPRESENT PLANE ANGLES IN DEGREES, MINUTES AND SECONDS TO THE NEAREST SECOND. R/W PLAT DISTANCES ARE GROUND LENGTHS UNLESS OTHERWISE NOTED AND MAY BE CONVERTED TO GRID LENGTHS BY MULTIPLYING PLAT DISTANCES BY 0.9999197.

CURVE 3
 ARC = 108.43'
 LC = 108.42'
 LCB = S23°-38'-48"E
 R = 2181.23'
 D = 2°-37'-36"

CURVE 4
 ARC = 472.39'
 LC = 471.44'
 LCB = S31°-36'-26"E
 R = 2151.23'
 D = 2°-39'-48"



END RELOCATION ORDER
 PROJECT 1641-06-21/ F08(3)
 STATION 133+00
 X = 1,682,437.15
 Y = 641,217.01

PI = 130+77.61
 X = 1,682,320.65
 Y = 641,407.14
 I = 170°-43'-30"
 Δ = 9°-16'-30"
 D = 3°-00"
 T = 154.92'
 L = 309.17'
 R = 1909.86'
 E = 6.27'