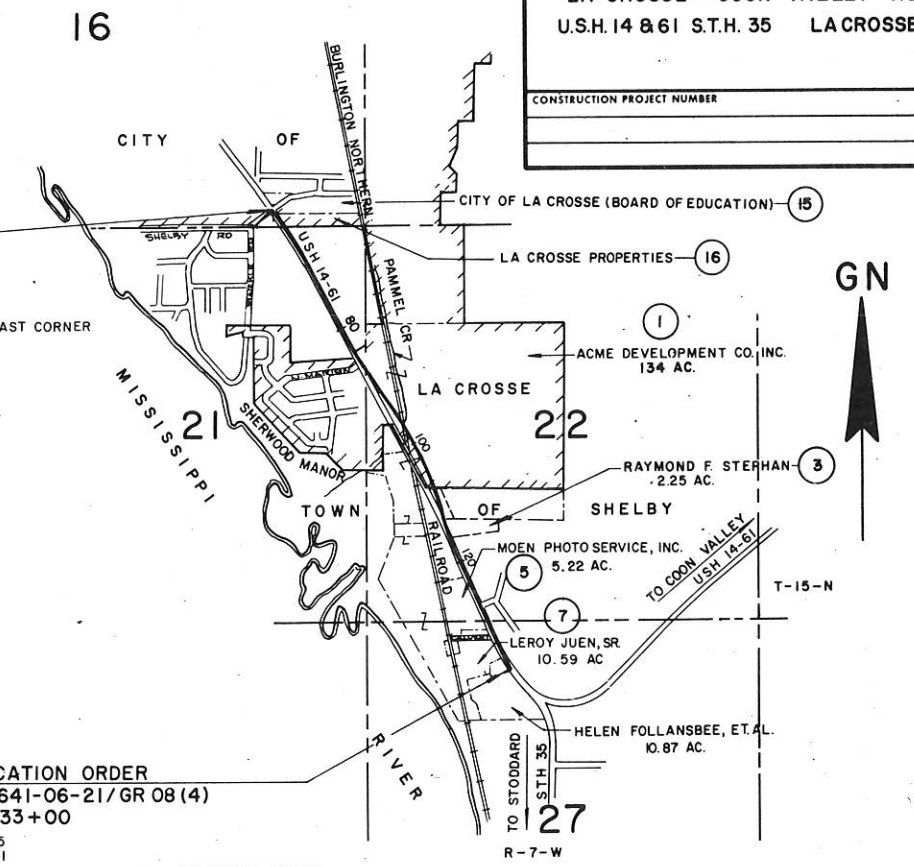


SCHEDULE OF LANDS AND INTERESTS REQUIRED									
PARCEL NUMBER	SHEET NUMBER	OWNER	INTEREST	L.H.E. ACRES	ACRES REQUIRED			TOTAL REMAINING ACRES	OPERATIONS PROJECT I.D.
					NEW	EXIST	TOTAL		
1	4.2,4.3	ACME DEVELOPMENT CO.	FEE SIMPLE		5.32	--	5.32	128.68	1641-06-21
2	4.3,4.4	WILLIAM J. SCHIECHE	FEE & L.H.E.	0.02	0.63	--	0.63	1.53	"
3	4.4	RAYMOND F. STEPHAN	FEE SIMPLE		0.01	--	0.01	2.24	"
4	"	CARL R. SCHLICHT	L.H.E.	0.09					"
5	4.4,4.5	MOEN PHOTO SERVICE	FEE SIMPLE & L.H.E.	0.19	0.11	--	0.11	5.11	"
6	4.5	ROY E. JUEN	"		0.14		0.14	0.76	"
7	"	LE ROY JUEN, SR.	"		0.54	--	0.54	10.05	"
8	4.1,4.2	CITY OF LA CROSSE (WATER UTILITY)	RELEASE OF RIGHTS						1641-06-40
9	4.2,4.3	CITY OF LA CROSSE (SANITARY SEWAGE UTILITY)	RELEASE OF RIGHTS						1641-06-41
10	4.3,4.4	NORTHERN STATES POWER CO.	"						1641-06-42
11	4.3	LA CROSSE TEL. CO.	"						1641-06-43
12	4.2,4.3	CITY OF LA CROSSE (STORM SEWER)	RELEASE OF RIGHTS						1641-06-44
13	4.3	BURLINGTON NORTHERN RAILROAD	AGREEMENT						1641-06-21
14	4.3	NORTHERN STATES POWER CO.	RELEASE OF RIGHTS						1641-06-42
1-01	4.2	COLLINS-LA CROSSE SIGN CORP.	SIGN ACQUISITION						1641-06-21
1-02	"	HOESCHLER REALTY CORP.	"						"
1-03	4.3	COLLINS-LA CROSSE SIGN CORP.	"						"
2-01	4.4	COLLINS-LA CROSSE SIGN CORP.	"						"
15	4.1	CITY OF LA CROSSE, BOARD OF EDUCATION	FEE & L.H.E.	0.01	0.01		0.01		"
16	"	LA CROSSE PROPERTIES	"	0.01	0.02		0.02		"
17	"	BOBBIE B. CHRISTIANSON	"	0.04	0.01		0.01		"
18	"	THELMA NEELAND	L.H.E.	0.01					"
19	"	LILLIAN SCHILLING	"	0.01					"
20	"	EDNA I. MONSKI, EST.	"	0.02					"
21	"	RUSSEL BRAUN	"	0.06					"
22	"	CHARLES C. COLLINS	"	0.04					"
23	"	DANIEL J. SCHROEDER	"	0.01					"
24	"	ELMER R. ARNOLD	"	0.01					"
25	4.1,4.2	CHARLES O. ZIELKE	"	0.02					"
26	4.2	CHARLES P. NICHOLS	"	0.01					"
27	"	RAYMOND LEE	FEE & L.H.E.	0.02	0.01		0.01		"
28	"	EUGENE G. LEONARD, ET. AL.	"	0.02	0.01		0.01		"

R/W PROJECT NUMBER <b>1641-06-21</b>	SHEET NUMBER <b>4.0</b>	TOTAL SHEETS
FEDERAL PROJECT NUMBER <b>GR 08(4)</b>		
PLAT OF RIGHT OF WAY REQUIRED FOR <b>LA CROSSE - COON VALLEY ROAD</b> <b>U.S.H. 14 &amp; 61 S.T.H. 35 LA CROSSE CO.</b>		
CONSTRUCTION PROJECT NUMBER		

**BEGIN RELOCATION ORDER**  
**PROJECT 1641-06-21/GR 08(4)**  
**STATION 65+00**  
 X = 1,679,388.68  
 Y = 647,257.55  
 N 77°14'-47"W - 1163.5 FEET FROM THE SOUTHEAST CORNER OF SECTION 16, T 15 N, R 7 W.

**END RELOCATION ORDER**  
**PROJECT 1641-06-21/GR 08(4)**  
**STATION 133+00**  
 X = 1,682,437.15  
 Y = 641,217.01  
 ± 510 FEET SOUTH AND ± 530 FEET WEST OF THE NORTH ONE-QUARTER CORNER OF SECTION 27, T 15 N, R 7 W.



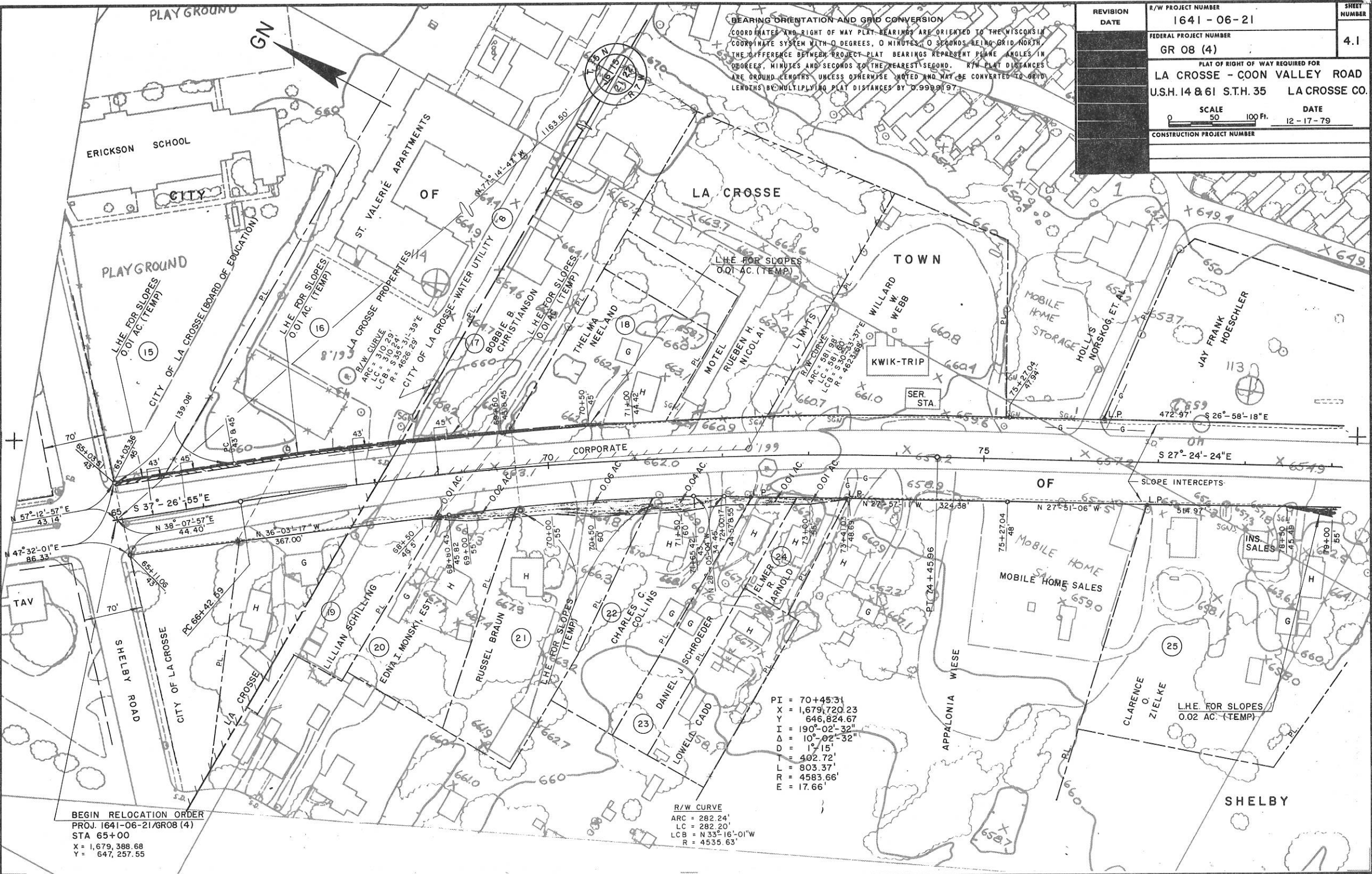
**PROJECT LOCATION**  
**PROPERTY BOUNDARIES AND ACREAGES**  
 0 1/2 1 MILE  
 TOTAL NET CENTERLINE LENGTH = 1.288 MILES

REVISION DATE 12-17-79	STATE OF WISCONSIN DEPARTMENT OF TRANSPORTATION
Approved: Date 7-19-79	<i>T.R. Kuey</i> District Transportation Director
Approved: Date 7/23/79	<i>B.S. Muller</i> Director, Bureau of Real Estate
	U.S. DEPARTMENT OF TRANSPORTATION FEDERAL HIGHWAY ADMINISTRATION REGION 5 WISCONSIN DIVISION
Approved: Date	Division Administrator

ALL COORDINATES SHOWN ON THIS PLAN ARE REFERENCED TO THE WISCONSIN COORDINATE SYSTEM, SOUTH ZONE.

REVISION DATE	R/W PROJECT NUMBER	SHEET NUMBER
	1641-06-21	4.1
FEDERAL PROJECT NUMBER		
GR 08 (4)		
PLAT OF RIGHT OF WAY REQUIRED FOR		
LA CROSSE - COON VALLEY ROAD		
U.S.H. 14 & 61 S.T.H. 35 LA CROSSE CO.		
SCALE	DATE	
50 100 Ft.	12-17-79	
CONSTRUCTION PROJECT NUMBER		

BEARING ORIENTATION AND GRID CONVERSION  
 COORDINATE AND RIGHT OF WAY PLAT BEARINGS ARE ORIENTED TO THE WISCONSIN  
 COORDINATE SYSTEM WITH 0 DEGREES, 0 MINUTES, 0 SECONDS BEING GRID NORTH  
 THE DIFFERENCE BETWEEN PROJECT PLAT BEARINGS REPRESENT PLANE ANGLES IN  
 DEGREES, MINUTES AND SECONDS TO THE NEAREST SECOND. R/W PLAT DISTANCES  
 ARE GROUND LENGTHS UNLESS OTHERWISE NOTED AND MAY BE CONVERTED TO GRID  
 LENGTHS BY MULTIPLYING PLAT DISTANCES BY 0.9999197.



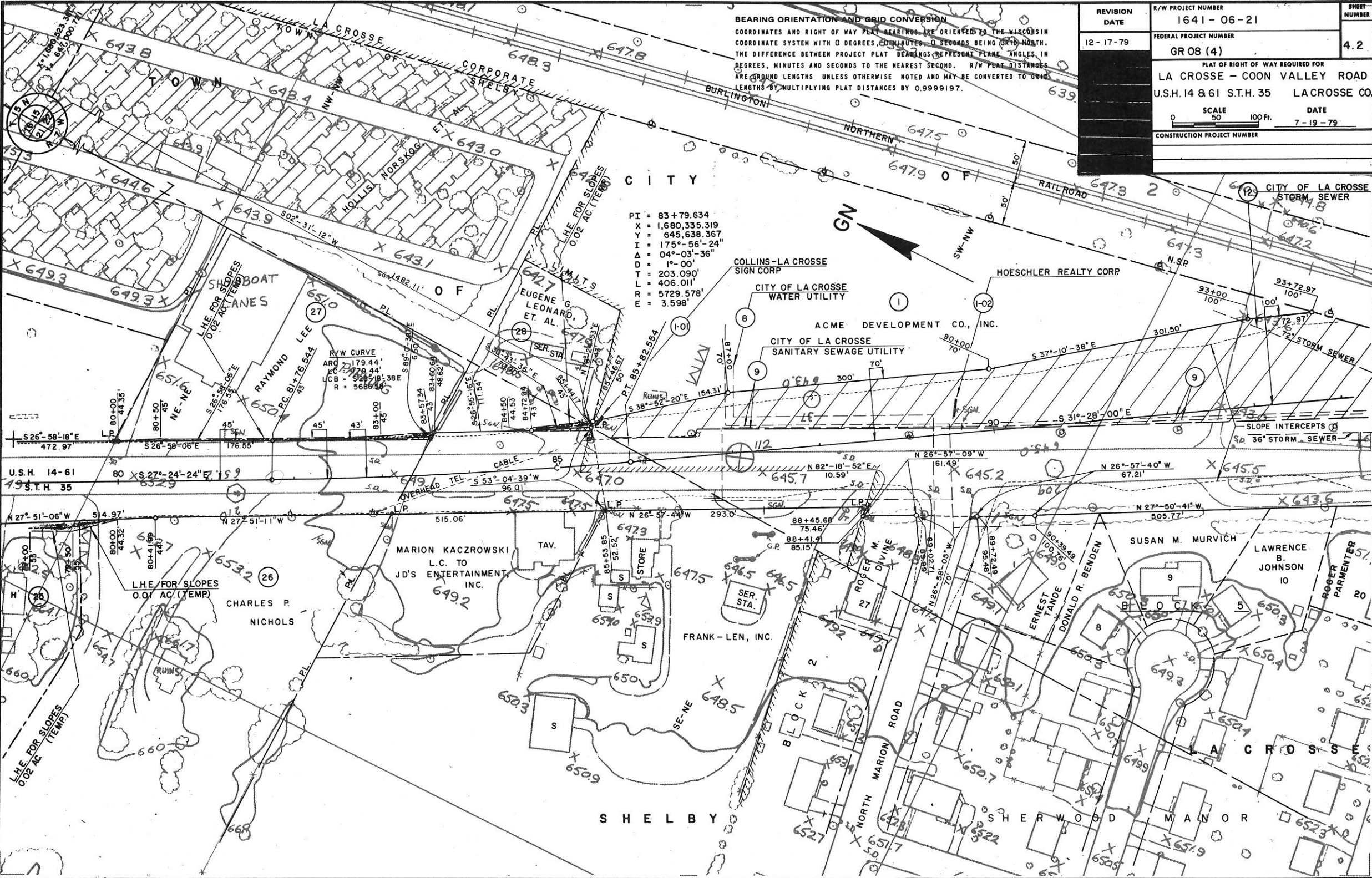
PI = 70+45.31  
 X = 1,679,720.23  
 Y = 646,824.67  
 I = 190°-02'-32"  
 Δ = 10°-02'-32"  
 D = 1°-15'  
 T = 402.72'  
 L = 803.37'  
 R = 4583.66'  
 E = 17.66'

R/W CURVE  
 ARC = 282.24'  
 LC = 282.20'  
 LCB = N 33°-16'-01" W  
 R = 4535.63'

BEGIN RELOCATION ORDER  
 PROJ. 1641-06-21/GR08 (4)  
 STA 65+00  
 X = 1,679,388.68  
 Y = 647,257.55

**BEARING ORIENTATION AND GRID CONVERSION**  
 COORDINATES AND RIGHT OF WAY BEARINGS ARE ORIENTED TO THE WISCONSIN COORDINATE SYSTEM WITH 0 DEGREES, 00 MINUTES, 00 SECONDS BEING GRID NORTH. THE DIFFERENCE BETWEEN PROJECT PLAT BEARINGS REPRESENT PLANE ANGLES IN DEGREES, MINUTES AND SECONDS TO THE NEAREST SECOND. R/W PLAT DISTANCES ARE PLAT LENGTHS UNLESS OTHERWISE NOTED AND MAY BE CONVERTED TO GRID LENGTHS BY MULTIPLYING PLAT DISTANCES BY 0.9999197.

REVISION DATE	R/W PROJECT NUMBER	SHEET NUMBER
12-17-79	1641-06-21	4.2
FEDERAL PROJECT NUMBER		
GR 08 (4)		
PLAT OF RIGHT OF WAY REQUIRED FOR		
LA CROSSE - COON VALLEY ROAD		
U.S.H. 14 & 61 S.T.H. 35 LACROSSE CO.		
SCALE		DATE
0 50 100 Ft.		7-19-79
CONSTRUCTION PROJECT NUMBER		



PI = 83+79.634  
 X = 1,680,335.319  
 Y = 645,638.367  
 I = 175°-56'-24"  
 Δ = 04°-03'-36"  
 D = 1°-00"  
 T = 203.090'  
 L = 406.011'  
 RR = 5729.578'  
 E = 3.598'

**R/W CURVE**  
 ARC = 179.44'  
 LCB = 52°-18'-38"E  
 R = 5686.34'

U.S.H. 14-61  
19 S.T.H. 35

N 27°-51'-06" W 514.97'

LHE FOR SLOPES  
0.02 AC (TEMP)

LHE FOR SLOPES  
0.02 AC (TEMP)

SHELBY

LACROSSE

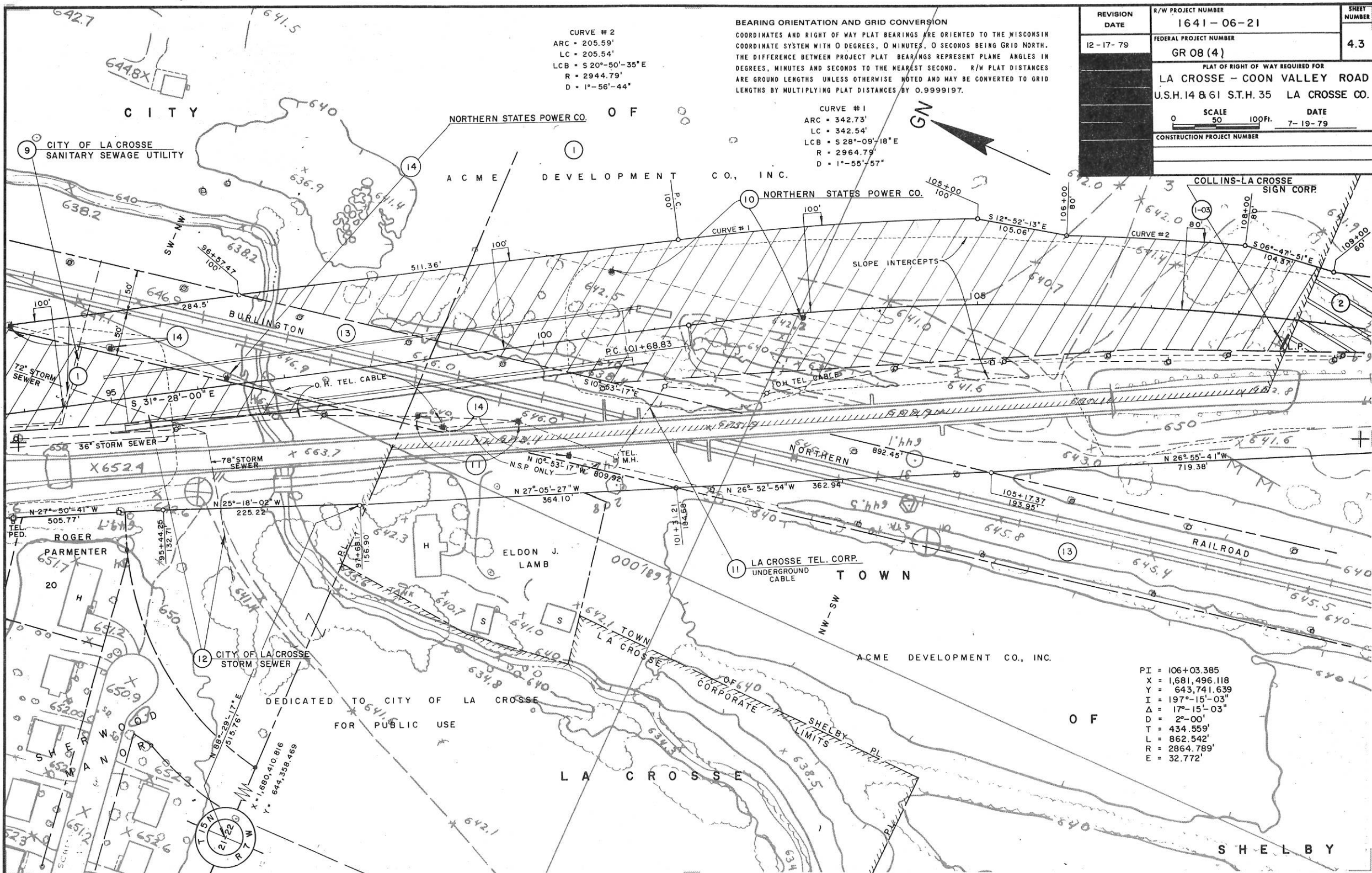
SHERWOOD MANOR

REVISION DATE	R/W PROJECT NUMBER	SHEET NUMBER
12-17-79	1641-06-21	4.3
FEDERAL PROJECT NUMBER		
GR 08 (4)		
PLAT OF RIGHT OF WAY REQUIRED FOR <b>LA CROSSE - COON VALLEY ROAD</b> U.S.H. 14 & 61 S.T.H. 35 LA CROSSE CO.		
SCALE	DATE	
0 50 100 Ft.	7-19-79	
CONSTRUCTION PROJECT NUMBER		

CURVE #2  
 ARC = 205.59'  
 LC = 205.54'  
 LCB = S 20°-50'-35"E  
 R = 2944.79'  
 D = 1°-56'-44"

BEARING ORIENTATION AND GRID CONVERSION  
 COORDINATES AND RIGHT OF WAY PLAT BEARINGS ARE ORIENTED TO THE WISCONSIN COORDINATE SYSTEM WITH 0 DEGREES, 0 MINUTES, 0 SECONDS BEING GRID NORTH. THE DIFFERENCE BETWEEN PROJECT PLAT BEARINGS REPRESENT PLANE ANGLES IN DEGREES, MINUTES AND SECONDS TO THE NEAREST SECOND. R/W PLAT DISTANCES ARE GROUND LENGTHS UNLESS OTHERWISE NOTED AND MAY BE CONVERTED TO GRID LENGTHS BY MULTIPLYING PLAT DISTANCES BY 0.9999197.

CURVE #1  
 ARC = 342.73'  
 LC = 342.54'  
 LCB = S 28°-09'-18"E  
 R = 2964.79'  
 D = 1°-55'-57"



PI = 106+03.385  
 X = 1,681,496.118  
 Y = 643,741.639  
 I = 197°-15'-03"  
 Δ = 17°-15'-03"  
 D = 2°-00'  
 T = 434.559'  
 L = 862.542'  
 R = 2864.789'  
 E = 32.772'





**BEARING ORIENTATION AND GRID CONVERSION**  
 COORDINATES AND RIGHT OF WAY PLAT BEARINGS ARE ORIENTED TO THE WISCONSIN COORDINATE SYSTEM WITH 0 DEGREES, 0 MINUTES, 0 SECONDS BEING GRID NORTH. THE DIFFERENCE BETWEEN PROJECT PLAT BEARINGS REPRESENT PLANE ANGLES IN DEGREES, MINUTES AND SECONDS TO THE NEAREST SECOND. R/W PLAT DISTANCES ARE GROUND LENGTHS UNLESS OTHERWISE NOTED AND MAY BE CONVERTED TO GRID LENGTHS BY MULTIPLYING PLAT DISTANCES BY 0.9999197.

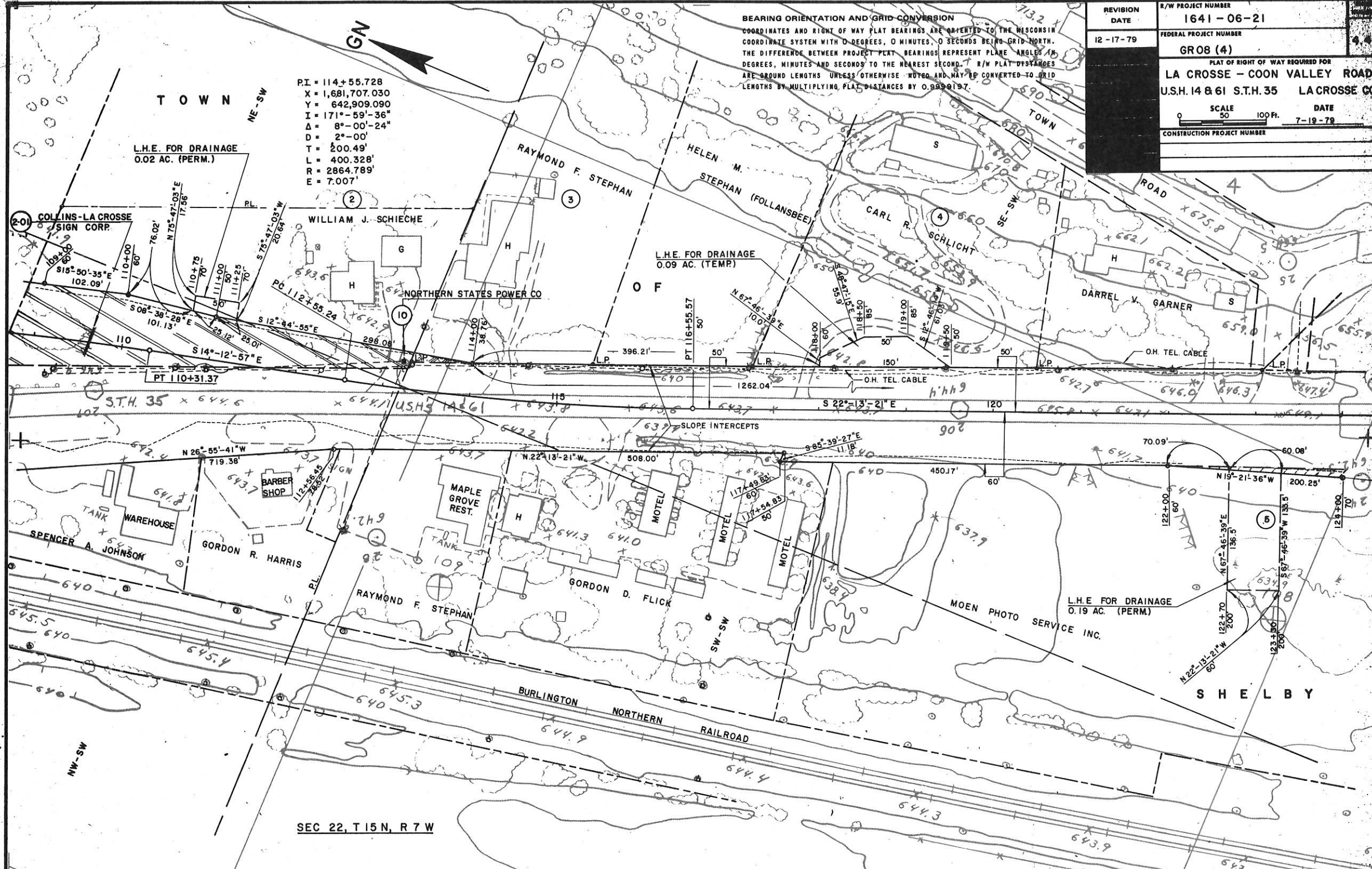
REVISION DATE	R/W PROJECT NUMBER
12-17-79	1641-06-21
FEDERAL PROJECT NUMBER	
GR08 (4)	
PLAT OF RIGHT OF WAY REQUIRED FOR	
LA CROSSE - COON VALLEY ROAD	
U.S.H. 14 & 61 S.T.H. 35 LACROSSE CO.	
SCALE	DATE
0 50 100 FT.	7-19-79
CONSTRUCTION PROJECT NUMBER	

PI = 114+55.728  
 X = 1,681,707.030  
 Y = 642,909.090  
 I = 171°-59'-36"  
 Δ = 8°-00'-24"  
 D = 2°-00'  
 T = 200.49'  
 L = 400.328'  
 R = 2864.789'  
 E = 7.007'

L.H.E. FOR DRAINAGE  
 0.02 AC. (PERM.)

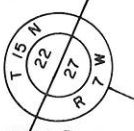
L.H.E. FOR DRAINAGE  
 0.09 AC. (TEMP.)

L.H.E. FOR DRAINAGE  
 0.19 AC. (PERM.)



SEC 22, T 15 N, R 7 W

**CURVE 3**  
 ARC = 108.43'  
 LC = 108.42'  
 LCB = S23°-38'-48"E  
 R = 2181.25'  
 D = 2°-37'-36"

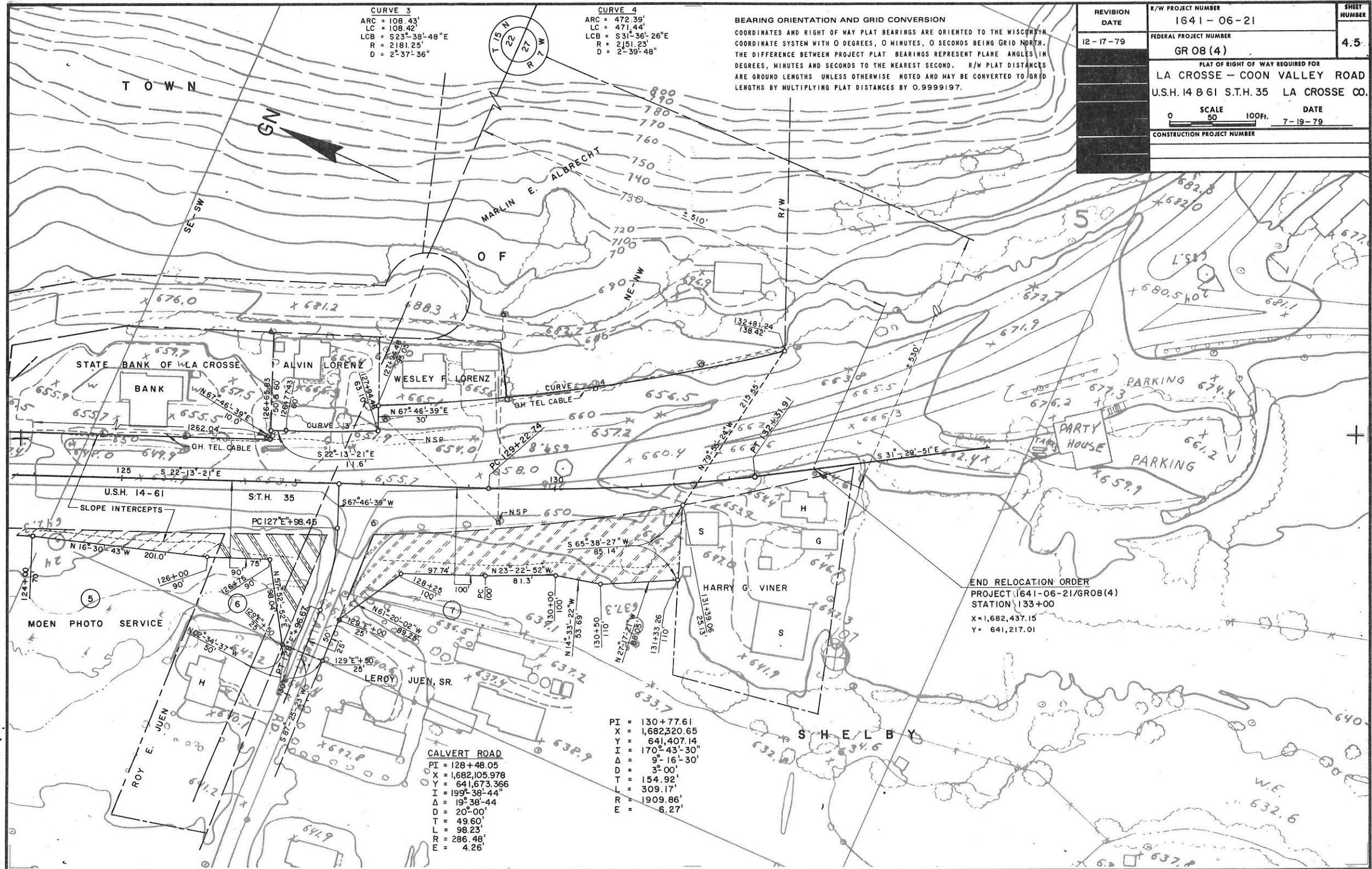


**CURVE 4**  
 ARC = 472.39'  
 LC = 471.44'  
 LCB = S31°-36'-26"E  
 R = 2151.23'  
 D = 2°-39'-48"

**BEARING ORIENTATION AND GRID CONVERSION**

COORDINATES AND RIGHT OF WAY PLAT BEARINGS ARE ORIENTED TO THE WISCONSIN COORDINATE SYSTEM WITH 0 DEGREES, 0 MINUTES, 0 SECONDS BEING GRID NORTH. THE DIFFERENCE BETWEEN PROJECT PLAT BEARINGS REPRESENT PLANE ANGLES IN DEGREES, MINUTES AND SECONDS TO THE NEAREST SECOND. R/W PLAT DISTANCES ARE GROUND LENGTHS UNLESS OTHERWISE NOTED AND MAY BE CONVERTED TO GRID LENGTHS BY MULTIPLYING PLAT DISTANCES BY 0.9999197.

REVISION DATE	R/W PROJECT NUMBER	SHEET NUMBER
12-17-79	1641-06-21	4.5
FEDERAL PROJECT NUMBER		
GR 08 (4)		
PLAT OF RIGHT OF WAY REQUIRED FOR		
LA CROSSE - COON VALLEY ROAD		
U.S.H. 14 & 61 S.T.H. 35 LA CROSSE CO.		
SCALE		DATE
0 50 100 FT.		7-19-79
CONSTRUCTION PROJECT NUMBER		



END RELOCATION ORDER  
 PROJECT 1641-06-21/GR08(4)  
 STATION 133+00  
 X = 1,682,437.15  
 Y = 641,217.01

**CALVERT ROAD**  
 PI = 128+48.05  
 X = 1,682,105.978  
 Y = 641,673.366  
 I = 199°-38'-44"  
 Δ = 19°-38'-44"  
 D = 20°-00"  
 T = 49.60'  
 L = 98.23'  
 R = 286.48'  
 E = 4.26'

PI = 130+77.61  
 X = 1,682,320.65  
 Y = 641,407.14  
 I = 170°-43'-30"  
 Δ = 9°-16'-30"  
 D = 3°-00"  
 T = 154.92'  
 L = 309.17'  
 R = 1909.86'  
 E = 6.27'

251