

11

Index of Sheets

Sheet No. 1	Title
Sheet No. 5	Typical Sections and Details
Sheet No. 3	Estimate of Quantities
Sheet No. 3	Miscellaneous Quantities
Sheet No. -	Right of Way Plat
Sheet No. 5 - 5.1	Plan and Profile
Sheet No. 6	Standard Detail Drawings
Sheet No. -	Standard Sign Plates
Sheet No. -	Structure Plans
Sheet No. -	Computer Earthwork Data
Sheet No. -	Cross Sections

TOTAL SHEETS = 5



STATE OF WISCONSIN DEPARTMENT OF TRANSPORTATION

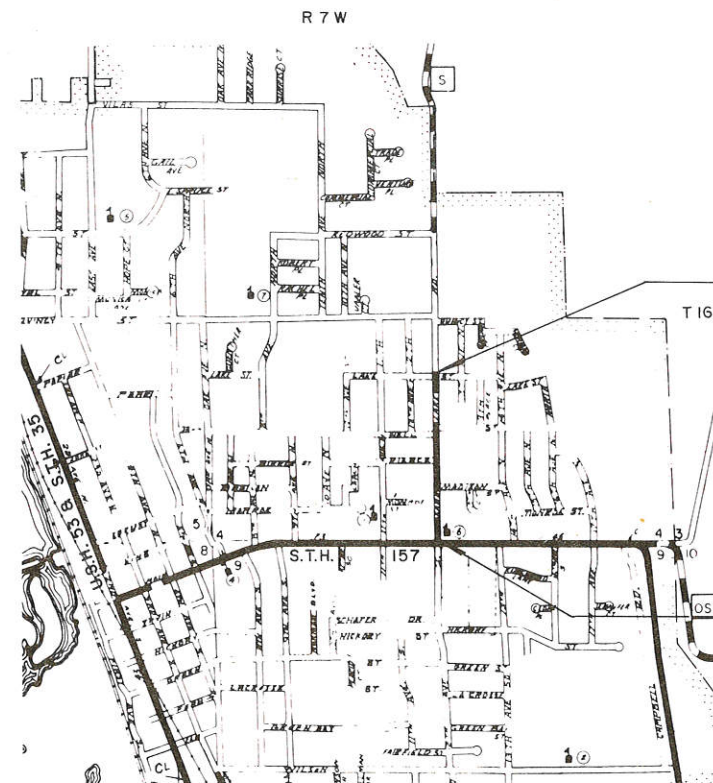
PLAN OF PROPOSED IMPROVEMENT

SAND LAKE ROAD, CITY OF ONALASKA EROSION CONTROL LOCAL STREET LA CROSSE COUNTY

STATE PROJECT	FEDERAL PROJECT	
	PROJECT	CONTRACT
5991-2-08	ER 018(5)	I

STATE PROJECT NUMBER
5991-2-08

Scales - PLAN 1" = 40 FT.



END PROJECT 5991-2-08
STA. 20+11
N = 691,100 (± 200)
E = 1,678,400 (± 200)
± 2,640 FEET WEST AND ± 2000 FEET NORTH
OF THE SOUTHEAST CORNER OF SECTION 4, T 16 N, R 7 W

BEGIN PROJECT 5991-2-08
STA. 0+40
N = 689,100 (± 200)
E = 1,678,400 (± 200)
± 2,640 FEET WEST OF THE SOUTHWEST
CORNER OF SECTION 4 T 16 N, R 7 W

Design Designation

A.D.T. 1979	= 8310
A.D.T. 1999	= 12,600
D.H.V.	= 1,512
D.	= 55 - 45
T.	= 6%
V.	= 35 M.P.H.

Conventional Signs

County Line	-----	Caution Symbol (Combustible fluids under pressure)	
Township or Range Line	-----	Railroads	-----
Section Line	-----	Fence	-----
Corporate or City Limits	-----	Culverts in Place	-----
Property line	-----	Culverts Required	-----
Lot Line	-----	Power Pole	-----
Existing Right of Way Line	-----	Telephone or Telegraph Pole	-----
New Right of Way Line	-----	Right of Way Markers	-----
Base of Survey Line	-----	Marsh	-----
Slope Intercept	-----	Wooded Area	-----
Existing Roadway or Private Entrance	-----	Grade Elevation	-----

Layout

Scale

Total Net Length of Centerline - 0.373 Mi. URBAN

NOTE : COORDINATE SHOWN ARE WISCONSIN COORDINATE SYSTEM SOUTH ZONE COORDINATE AND SCALED FROM U.S.G.S. TOPOGRAPHIC MAP, ONALASKA WISCONSIN, QUADRANGLE FOR IDENTIFICATION ONLY.

APPROVED FOR
CITY OF ONALASKA

DATE 4-27-79 *Ronald V. Lund*
CITY ENGINEER

STATE OF WISCONSIN
DEPARTMENT OF TRANSPORTATION

Surveyor CITY District Checker L.A.B.
Designer CITY C.O. Checker J.B.T.
District Supervisor R.V.R. C.O. Coordinator E.J.R.

Approved
Date 5-1-79 *T.R. Kinney*
District Transportation Director

Approved
Date 6/7/79 *D.A. Strand*
Chief Design Engineer

Approved
Date 6/8/79 *E.J. Ryskiel*
Director of Development

U.S. DEPARTMENT OF TRANSPORTATION
FEDERAL HIGHWAY ADMINISTRATION
REGION 5 WISCONSIN DIVISION

Approved
Date _____
Division Administrator

ESTIMATE OF QUANTITIES

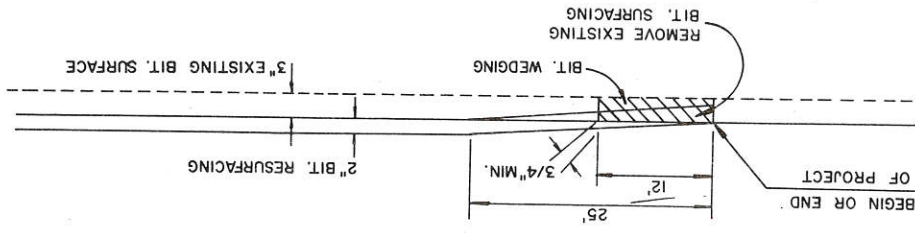
BITUMINOUS CONCRETE SURFACING

STATION TO	STATION	NET LENGTH OF CENTER LINE	ITEM NO.	UNIT	LN FT.	SQ. YD.	TON	TON	EACH	L.S.	L.S.
			20402	REMOVING BITUMINOUS SURFACE	1971.0						
			40701	BITUMINOUS CONCRETE PAVEMENT	1110						
			40702	BITUMINOUS MATERIAL FOR SURFACE COURSE	67						
			61182	ADJUSTING MANHOLE COVERS	15						
			61910	MOBILIZATION	1						
			64301	TRAFFIC CONTROL	1						
0+40 - 20+11											

BIT. CONC. PAVEMENT
 MAINLINE STA. 0+40.20+11
 TON 970
 WEDGING & UNDIS. 140

REMOVING BITUMINOUS SURFACE
 LOC. S.Y.
 0+40.0+52 MAINLINE 60
 19+99.20+11 MAINLINE 67

STA.	SIDE	LOC.	DIST. FT.
4+06	LT.		16
6+14	C/L		16
6+28	LT.		16
7+22	LT.		16
8+12	C/L		16
8+70	LT.		16
9+92	LT.		16
10+22	C/L		16
10+33	LT.		16
13+02	LT.		22
13+18	LT.		16
13+30	C/L		16
19+43	LT.		16
19+77	C/L		8
19+87	RT.		



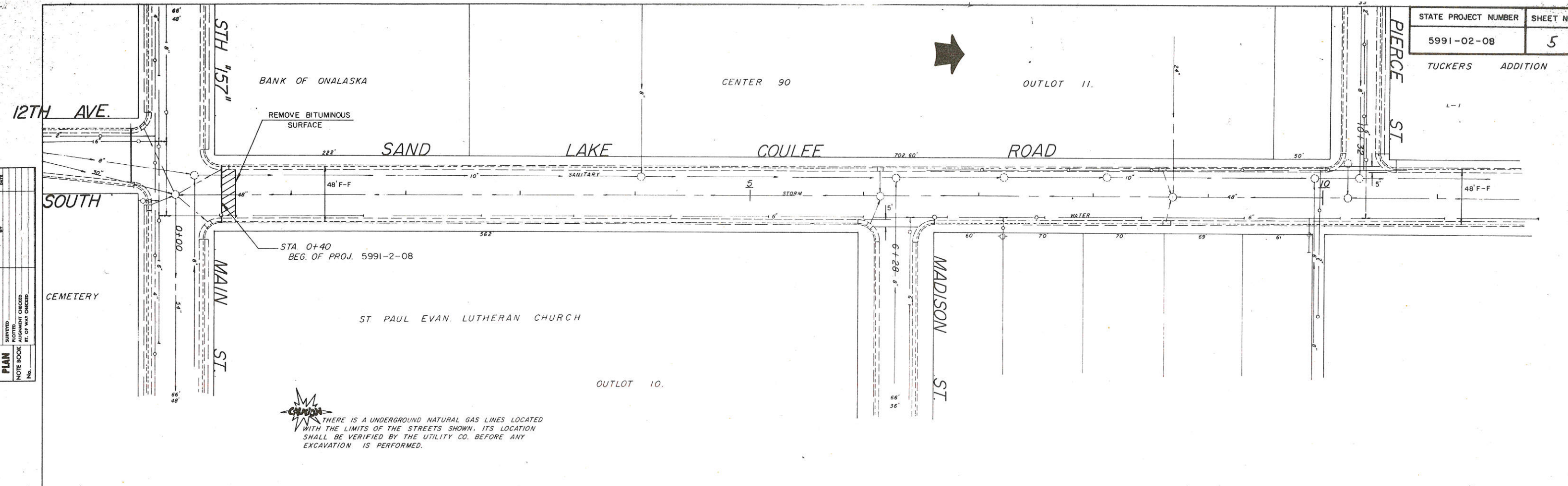
BUTT JOINT
 AT ENDS OF PROJECT

STANDARD DETAIL DRAWING

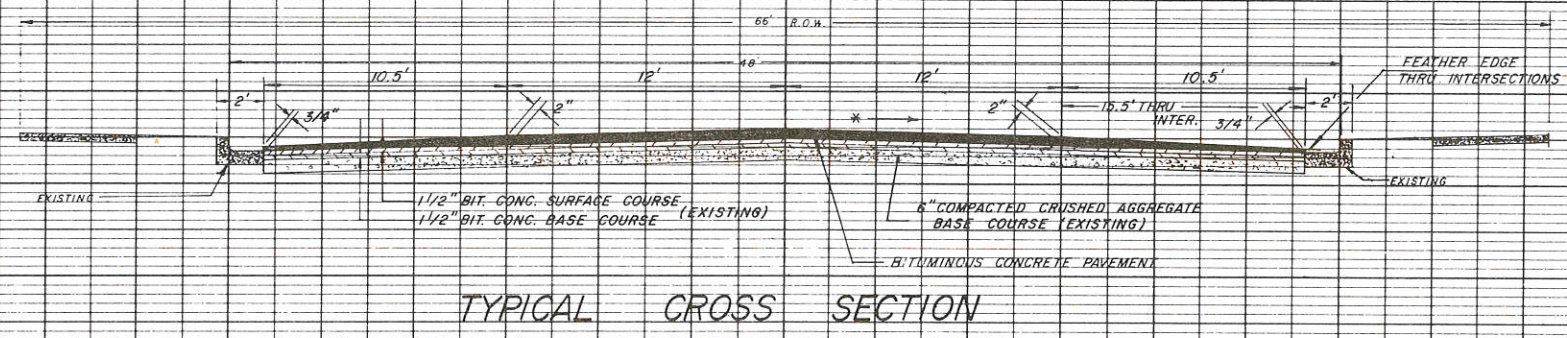
15C1-5 CONSTRUCTION BARRICADE & STANDARD SIGNS

UTILITIES
 CITY OF ONALASKA
 RONALD V. LUND
 CITY ENGINEER
 CITY HALL
 ONALASKA, MISC.
 608-783-5666

NORTHERN STATES POWER CO. (GAS)
 JACK DELANEY
 LA CROSSE, MISC.
 608-782-8110



CAUTION
 THERE IS AN UNDERGROUND NATURAL GAS LINES LOCATED WITH THE LIMITS OF THE STREETS SHOWN. ITS LOCATION SHALL BE VERIFIED BY THE UTILITY CO. BEFORE ANY EXCAVATION IS PERFORMED.



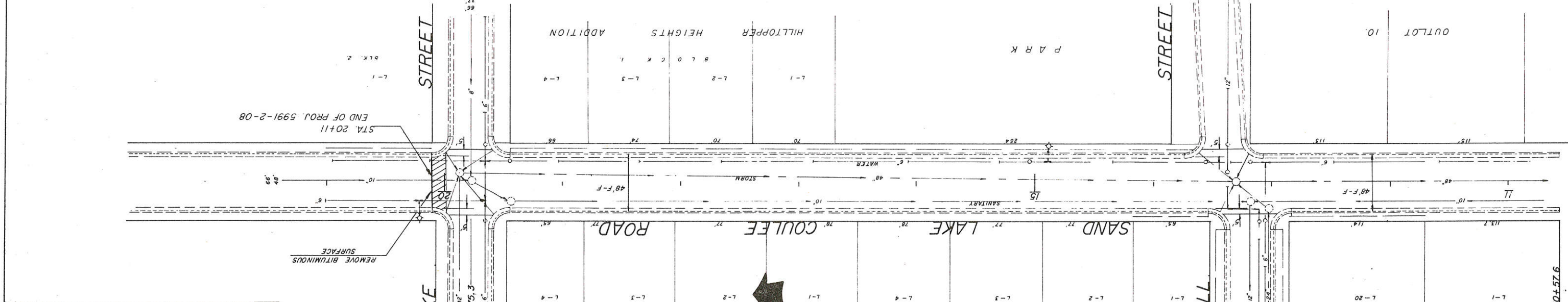
NOTE:
 PRIOR TO PLACING BITUMINOUS SURFACE COURSE, ALL REQUIRED CORRECTION OF THE EXISTING PAVEMENT SUCH AS FILLING HOLES, SAGS AND DEPRESSIONS SHALL BE MADE.
 * THE TRANSVERSE SLOPE SHALL MATCH EXISTING EXCEPT WHERE MODIFICATION IS REQUIRED TO ASSURE DRAINAGE. MINIMUM CROWN WILL BE NOT LESS THAN .01 FT./FT.

PLAN
 SURVEYED
 PLOTTED
 NOTE BOOK
 ALIGNMENT CHECKED
 RT. OF WAY CHECKED
 No.

PROFILE
 SURVEYED
 PLOTTED
 NOTE BOOK
 GRADES CHECKED
 STRUCTURE NOTATIONS CHECKED
 No.

STATE PROJECT NUMBER 5991-02-08
SHEET NO. 5.1

1975.3
13+18.3



SCALE 1" = 40' HORIZ

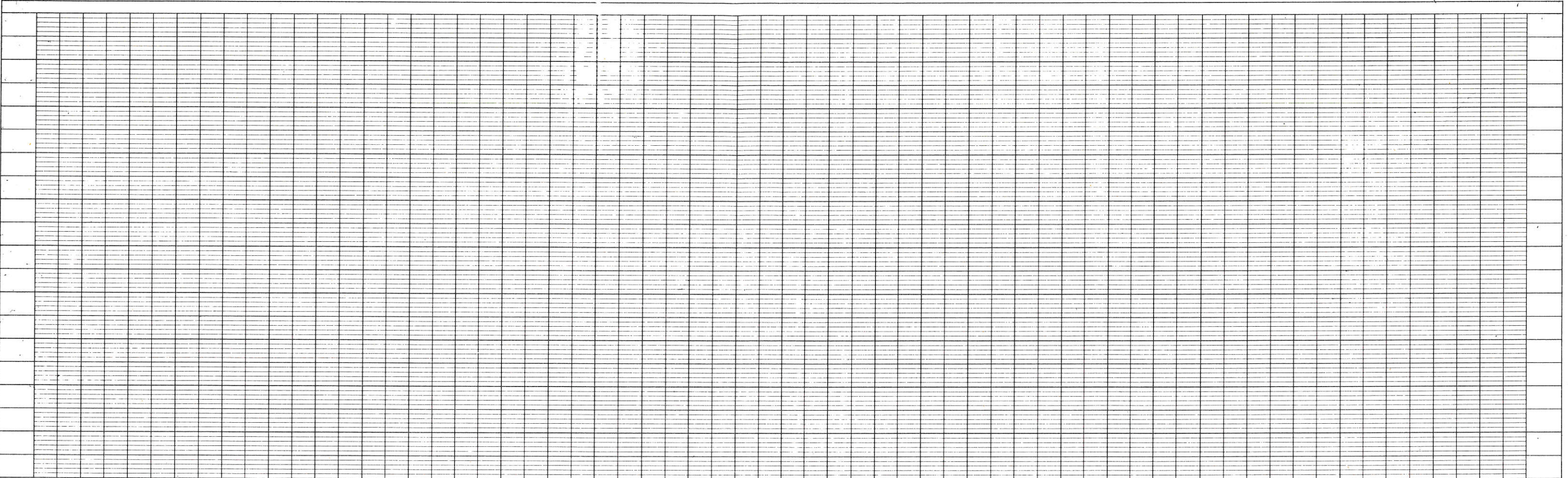
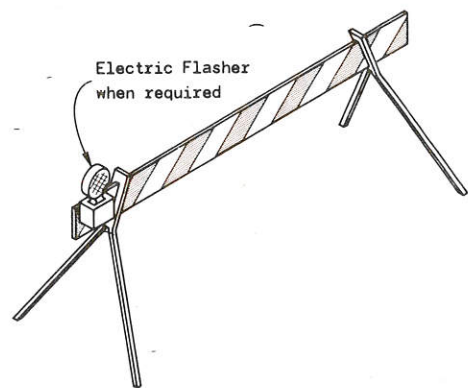


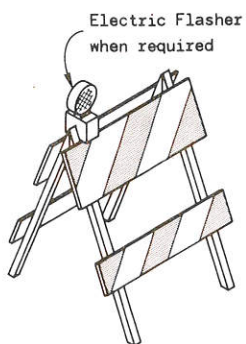
TABLE OF BARRICADE CHARACTERISTICS

BARRICADE TYPE	I	II	III
Height	3' Minimum		5' Minimum
*Rail Width	8" Minimum to 12" Maximum		
Rail Length	2' Minimum to variable Maximum		
** Stripe Width	6" at 45° Angle		
Stripe Colors	Reflectorized Orange & White		

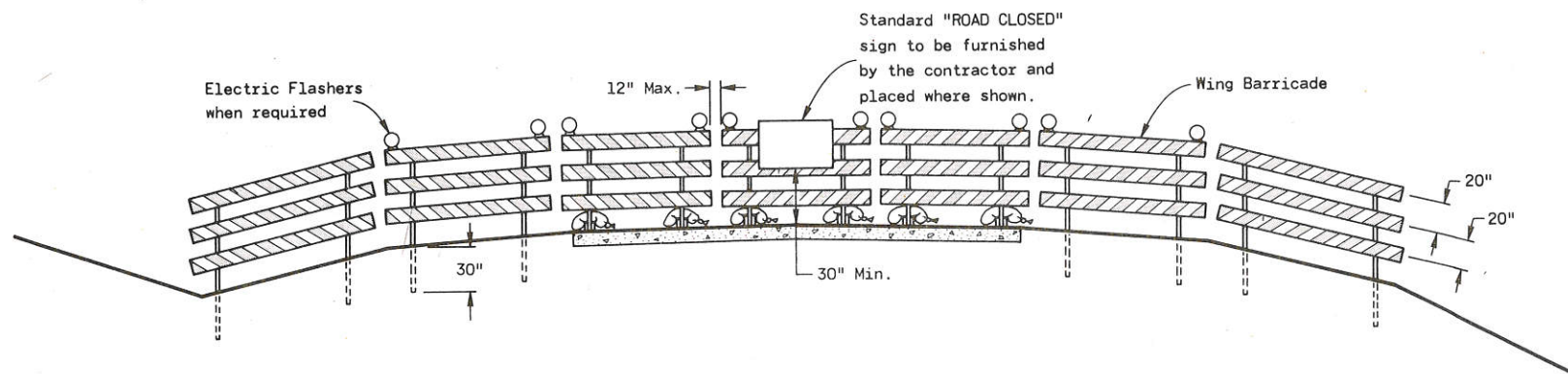
* Nominal dimensions when barricade is constructed of lumber.
 ** May be 4" for rail lengths less than 3'.



TYPICAL TYPE I BARRICADE

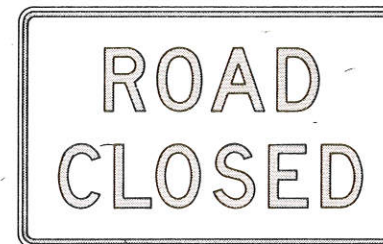


TYPICAL TYPE II BARRICADE



TYPICAL INSTALLATION SHOWING TYPE III BARRICADE

CONSTRUCTION BARRICADES



R11-2
48" x 30"

Black Lettering on Reflective
White Background
Letter Series "D"
Letter height 8"



W20-3
48" x 48"

Black Lettering on Reflective
Orange Background
Letter Series "D"
Letter height 7"

STANDARD SIGNS-TYPE II

GENERAL NOTES

The contractor shall furnish, erect and maintain Barricades and Signs. Details regarding location, spacing, dimensions, fabrication, material, sign lettering, lighting devices and color of Barricades and Signs shall conform to this drawing, the Wisconsin Manual on Uniform Traffic Control Devices, the Standard Specifications, Special Provisions and/or plans.

Type III Barricades and Signs shall be erected at the termini of projects and at other road or street locations where it is necessary to control or eliminate public access to the construction area.

Type I and II Barricades shall be used on projects when traffic is to be maintained through the construction area.

The actual field location of barricade installations and advance signs shall be as directed by the Engineer.

Each barricade shall have the name and telephone number of a person responsible for 24 hour emergency service printed in letters at least 3/4 inch in height.

CONSTRUCTION BARRICADES
& STANDARD SIGNS

State of Wisconsin
Department of Transportation
Division of Highways

APPROVED
10-1-76
DATE

D. J. Standa
CHIEF OF FACILITIES DEVELOPMENT

APPROVED
10-1-76
DATE

H. J. Siedler
STATE HIGHWAY ENGINEER

1000

Plan #257A

1000

11

11