

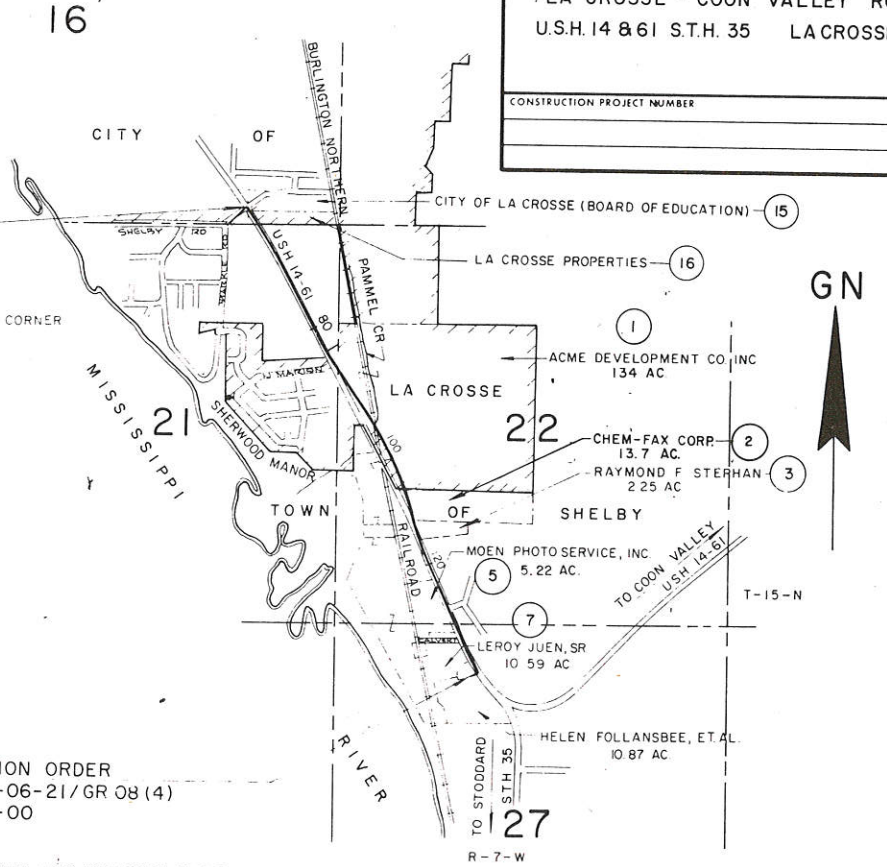
SCHEDULE OF LANDS AND INTERESTS REQUIRED

PARCEL NUMBER	SHEET NUMBER	OWNER	INTEREST	L.H.E. ACRES	ACRES REQUIRED			TOTAL REMAINING ACRES	OPERATIONS PROJECT I.D.
					NEW	EXIST	TOTAL		
1	42,43	ACME DEVELOPMENT CO.	FEE SIMPLE		0.32		5.32	128.15	1641-06-21
2	43,44	CHEM-FAX CORPORATION	FEE & L.H.E.	0.02	0.63		0.63	13.07	"
3	44	RAYMOND F. STEPHAN	FEE SIMPLE		0.01		0.01	2.24	"
4		CARL R. SCHLICHT	L.H.E.	0.09					"
5	44,45	MOEN PHOTO SERVICE	FEE & L.H.E.	0.19	0.11		0.11	5.11	"
6	45	ROY E. JUVEN	FEE SIMPLE		0.14		0.14	0.76	"
7		LE ROY JUVEN, SR.			0.54		0.54	10.05	"
8	41,42	CITY OF LA CROSSE (WATER UTILITY)	RELEASE OF RIGHTS						1641-06-40
9	42,43	CITY OF LA CROSSE (SANITARY SEWAGE UTILITY)	RELEASE OF RIGHTS						1641-06-41
10	43,44	NORTHERN STATES POWER CO.							1641-06-42
11	43	LA CROSSE TEL. CO.							1641-06-43
12	42,43	CITY OF LA CROSSE (STORM SEWER)	RELEASE OF RIGHTS						1641-06-44
13	43	BURLINGTON NORTHERN RAILROAD	AGREEMENT						1641-06-21
14	43	NORTHERN STATES POWER CO.	RELEASE OF RIGHTS						1641-06-42
15	42	NATIONAL ADVERTISING CO.	SIGN ACQUISITION						1641-06-21
16	42	HOESCHLER REALTY CORP.							"
17	43	COLLINS-LA CROSSE SIGN CORP.							"
18	44	COLLINS-LA CROSSE SIGN CORP.							"
19	41	CITY OF LA CROSSE, BOARD OF EDUCATION	FEE & L.H.E.	0.01	0.01		0.01		"
20		LA CROSSE PROPERTIES		0.01	0.02		0.02		"
21		BOBBIE B. CHRISTIANSON		0.01	0.01		0.01		"
22		THE MA NEELAND	L.H.E.	0.01					"
23		LILLIAN SCHILLING		0.01					"
24		EDNA I. MONSKI, EST.		0.02					"
25		RUSSEL BRAUN		0.06					"
26		CHARLES C. COLLINS		0.04					"
27		DANIEL J. SCHROEDER		0.01					"
28		ELMER R. ARNOLD		0.01					"
29	41,42	CHARLES O. ZIELKE		0.02					"
30	42	CHARLES P. NICHOLS		0.01					"
31		RAYMOND LEE	FEE & L.H.E.	0.02	0.01		0.01		"
32		EUGENE G. LEONARD, ET AL.		0.02	0.01		0.01		"
33	41	JAY FRANK HOESCHLER		0.02	0.02		0.02		"

R/W PROJECT NUMBER	1641-06-21	SHEET NUMBER	4.0	TOTAL SHEETS	
FEDERAL PROJECT NUMBER	GR 08(4)				
PLAT OF RIGHT OF WAY REQUIRED FOR LA CROSSE - COON VALLEY ROAD U.S.H. 14 & 61 S.T.H. 35 LA CROSSE CO.					
CONSTRUCTION PROJECT NUMBER					

BEGIN RELOCATION ORDER
PROJECT 1641-06-21/GR 08(4)
STATION 65+00
X = 679,388.68
Y = 647,251.15
± 14' 47" W ± 63.5 FEET FROM THE SOUTHEAST CORNER OF SECTION 19, T15N, R7W

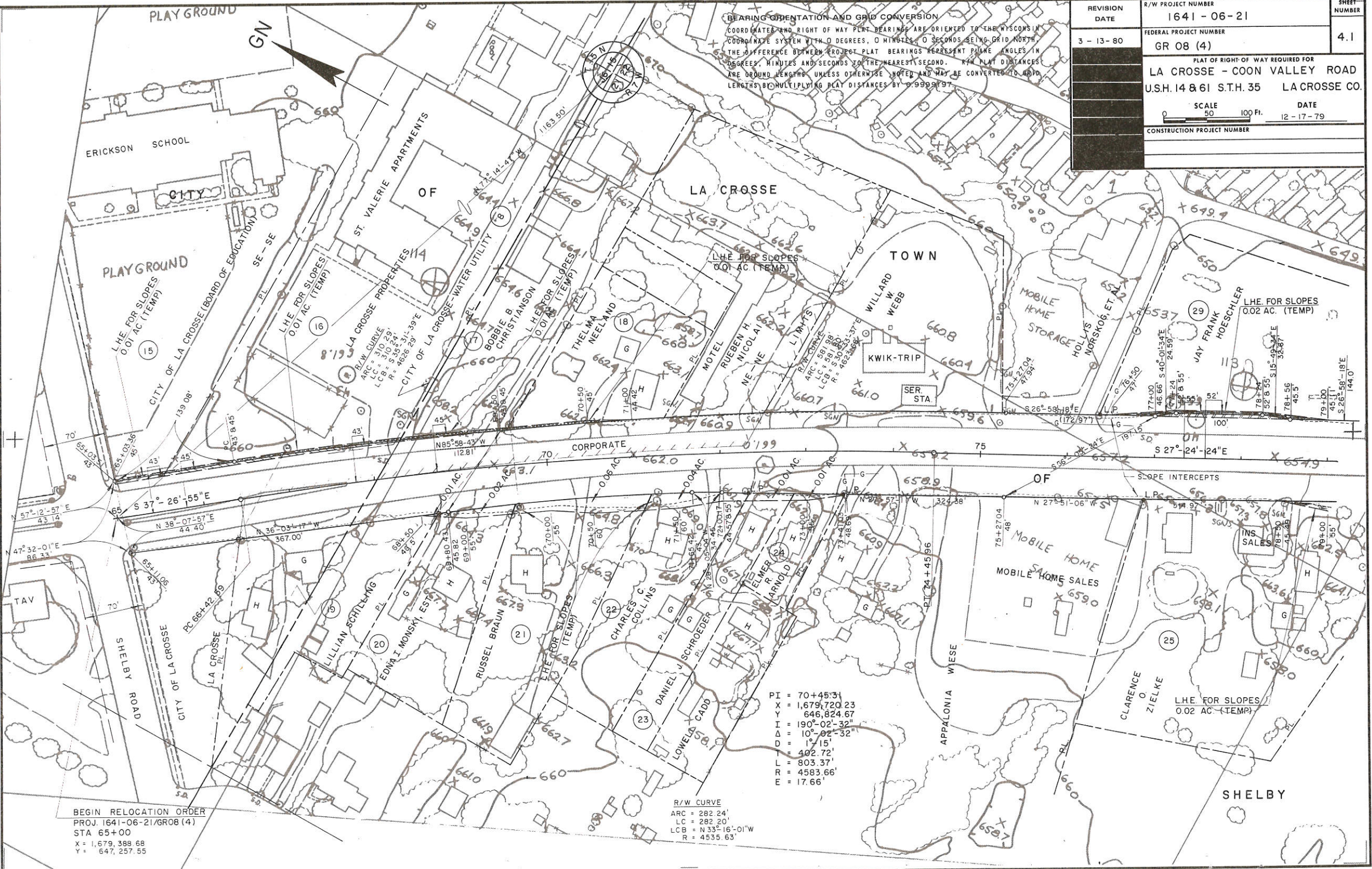
END RELOCATION ORDER
PROJECT 1641-06-21/GR 08(4)
STATION 133+00
X = 1,682,437.15
Y = 641,217.01
± 510 FEET SOUTH AND ± 530 FEET WEST OF THE NORTH ONE-QUARTER CORNER OF SECTION 27, T15N, R7W



PROJECT LOCATION
PROPERTY BOUNDARIES AND ACREAGES
0 1/2 1 MILE
TOTAL NET CENTERLINE LENGTH = 1.238 MILES

REVISION DATE	STATE OF WISCONSIN DEPARTMENT OF TRANSPORTATION
12-17-79	
3-13-80	Approved Date: 7-19-79 <i>T.R. Kiser</i> District Transportation Engineer
	Approved Date: 7/23/79 <i>B.J. Mullin</i> District Engineer
	U.S. DEPARTMENT OF TRANSPORTATION FEDERAL HIGHWAY ADMINISTRATION REGION 5 - WISCONSIN DIVISION
	Approved Date: _____

ALL COORDINATES SHOWN ON THIS PLAN ARE REFERENCED TO THE WISCONSIN COORDINATE SYSTEM, SOUTH ZONE.



REVISION DATE	R/W PROJECT NUMBER	SHEET NUMBER
3-13-80	1641-06-21	4.1
FEDERAL PROJECT NUMBER		
GR 08 (4)		
PLAT OF RIGHT-OF-WAY REQUIRED FOR		
LA CROSSE - COON VALLEY ROAD		
U.S.H. 14 & 61 S.T.H. 35 LA CROSSE CO.		
SCALE		DATE
0 50 100 Ft.		12-17-79
CONSTRUCTION PROJECT NUMBER		

BEARING ORIENTATION AND GRID CONVERSION
 COORDINATE AND RIGHT OF WAY PLAT BEARINGS ARE ORIENTED TO THE WISCONSIN
 COORDINATE SYSTEM WITH 0 DEGREES, 0 MINUTES, 0 SECONDS BEING GRID NORTH.
 THE DIFFERENCE BETWEEN PROJECT PLAT BEARINGS REPRESENT PLANE ANGLES IN
 DEGREES, MINUTES AND SECONDS TO THE NEAREST SECOND. R/W PLAT DISTANCES
 ARE GROUND LENGTHS UNLESS OTHERWISE NOTED AND MAY BE CONVERTED TO GRID
 LENGTHS BY MULTIPLYING PLAT DISTANCES BY 0.9999197.

BEGIN RELOCATION ORDER
 PROJ. 1641-06-21/GR08 (4)
 STA 65+00
 X = 1,679,389.68
 Y = 647,257.55

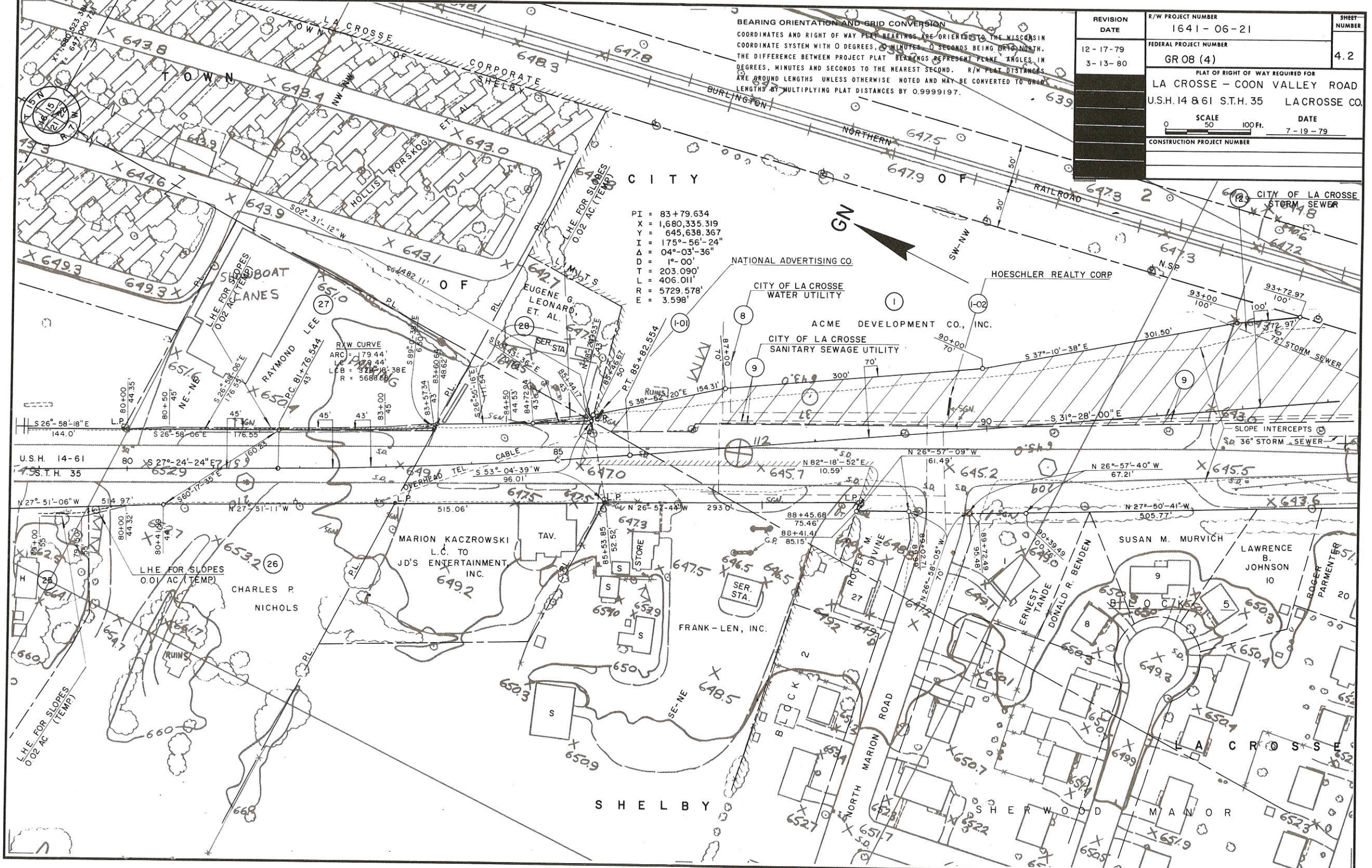
R/W CURVE
 ARC = 282.24'
 LC = 282.20'
 LCB = N 33° 16' 01" W
 R = 4535.63'

PI = 70+45.31
 X = 1,679,720.23
 Y = 646,824.67
 I = 190° 02' 32"
 Δ = 10° 02' 32"
 D = 1° 15'
 L = 402.72'
 R = 803.37'
 E = 4583.66'
 F = 17.66'

BEARING ORIENTATION AND GRID CONVERSION
 COORDINATES AND RIGHT OF WAY PLAT BEARINGS ARE ORIENTED TO THE WISCONSIN COORDINATE SYSTEM WITH 0 DEGREES, 0 MINUTES, 0 SECONDS BEING GRID NORTH. THE DIFFERENCE BETWEEN PROJECT PLAT BEARINGS REPRESENT PLANE ANGLES IN DEGREES, MINUTES AND SECONDS TO THE NEAREST SECOND. R/W PLAT DISTANCES ARE AROUND LENGTHS UNLESS OTHERWISE NOTED AND MAY BE CONVERTED TO GRID LENGTHS BY MULTIPLYING PLAT DISTANCES BY 0.9999197.

REVISION DATE	R/W PROJECT NUMBER	SHEET NUMBER
12-17-79	1641-06-21	4.2
3-13-80	FEDERAL PROJECT NUMBER	
	GR 08 (4)	
PLAT OF RIGHT OF WAY REQUIRED FOR		
LA CROSSE - COON VALLEY ROAD		
U.S.H. 14 & 61 S.T.H. 35 LACROSSE CO.		
SCALE		DATE
0 50 100 Ft.		7-19-79
CONSTRUCTION PROJECT NUMBER		

PI = 83+79.634
 X = 1,680,335.319
 Y = 645,638.367
 I = 175°-56'-24"
 Δ = 04°-03'-36"
 D = 1°-00'
 T = 203.090'
 L = 406.011'
 R = 5729.578'
 E = 3.598'

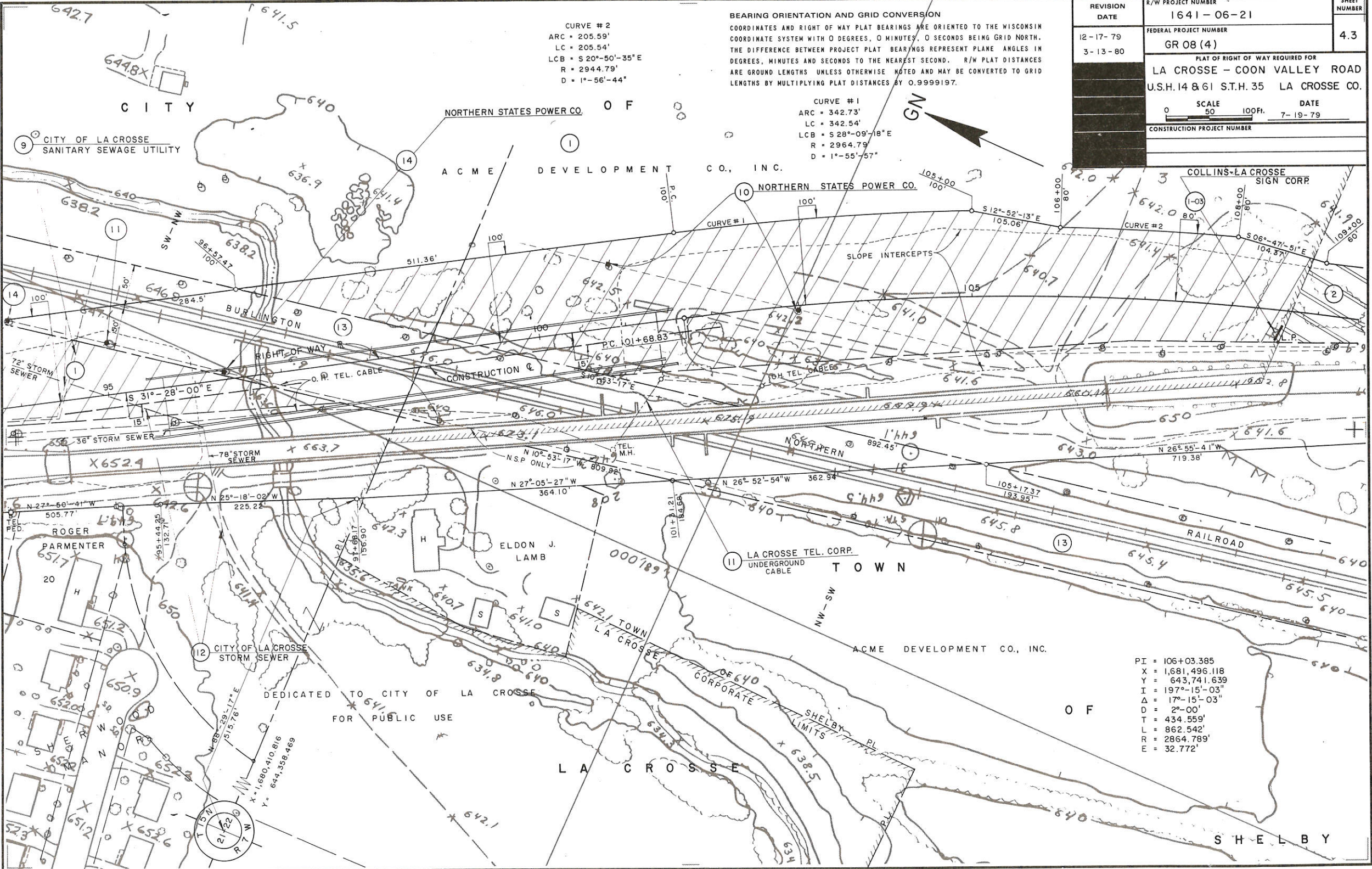


REVISION DATE	R/W PROJECT NUMBER	SHEET NUMBER
12-17-79	1641-06-21	4.3
3-13-80	FEDERAL PROJECT NUMBER	
	GR 08 (4)	
PLAT OF RIGHT OF WAY REQUIRED FOR		
LA CROSSE - COON VALLEY ROAD		
U.S.H. 14 & 61 S.T.H. 35 LA CROSSE CO.		
SCALE	DATE	
0 50 100 FT.	7-19-79	
CONSTRUCTION PROJECT NUMBER		

BEARING ORIENTATION AND GRID CONVERSION
 COORDINATES AND RIGHT OF WAY PLAT BEARINGS ARE ORIENTED TO THE WISCONSIN COORDINATE SYSTEM WITH 0 DEGREES, 0 MINUTES, 0 SECONDS BEING GRID NORTH. THE DIFFERENCE BETWEEN PROJECT PLAT BEARINGS REPRESENT PLANE ANGLES IN DEGREES, MINUTES AND SECONDS TO THE NEAREST SECOND. R/W PLAT DISTANCES ARE GROUND LENGTHS UNLESS OTHERWISE NOTED AND MAY BE CONVERTED TO GRID LENGTHS BY MULTIPLYING PLAT DISTANCES BY 0.9999197.

CURVE #2
 ARC = 205.59'
 LC = 205.54'
 LCB = S 20°-50'-35"E
 R = 2944.79'
 D = 1°-56'-44"

CURVE #1
 ARC = 342.73'
 LC = 342.54'
 LCB = S 28°-09'-18"E
 R = 2964.79'
 D = 1°-55'-57"



PI = 106+03.385
 X = 1,681,496.118
 Y = 643,741.639
 I = 197°-15'-03"
 Δ = 17°-15'-03"
 D = 2°-00"
 T = 434.559'
 L = 862.542'
 R = 2864.789'
 E = 32.772'



BEARING ORIENTATION AND GRID CONVERSION
 COORDINATES AND RIGHT OF WAY PLAT BEARINGS ARE ORIENTED TO THE WISCONSIN COORDINATE SYSTEM WITH 0 DEGREES, 0 MINUTES, 0 SECONDS BEING GRID NORTH. THE DIFFERENCE BETWEEN PROJECT PLAT BEARINGS REPRESENT PLANE ANGLES IN DEGREES, MINUTES AND SECONDS TO THE NEAREST SECOND. R/W PLAT DISTANCES ARE GROUND LENGTHS UNLESS OTHERWISE NOTED AND MAY BE CONVERTED TO GRID LENGTHS BY MULTIPLYING PLAT DISTANCES BY 0.9999197.

REVISION DATE	R/W PROJECT NUMBER	SHEET NUMBER
12-17-79	1641-06-21	4.4
3-13-80	FEDERAL PROJECT NUMBER	
	GR08 (4)	
PLAT OF RIGHT OF WAY REQUIRED FOR		
LA CROSSE - COON VALLEY ROAD		
U.S.H. 14 & 61 S.T.H. 35 LA CROSSE CO.		
SCALE	DATE	
0 50 100 Ft.	7-19-79	
CONSTRUCTION PROJECT NUMBER		

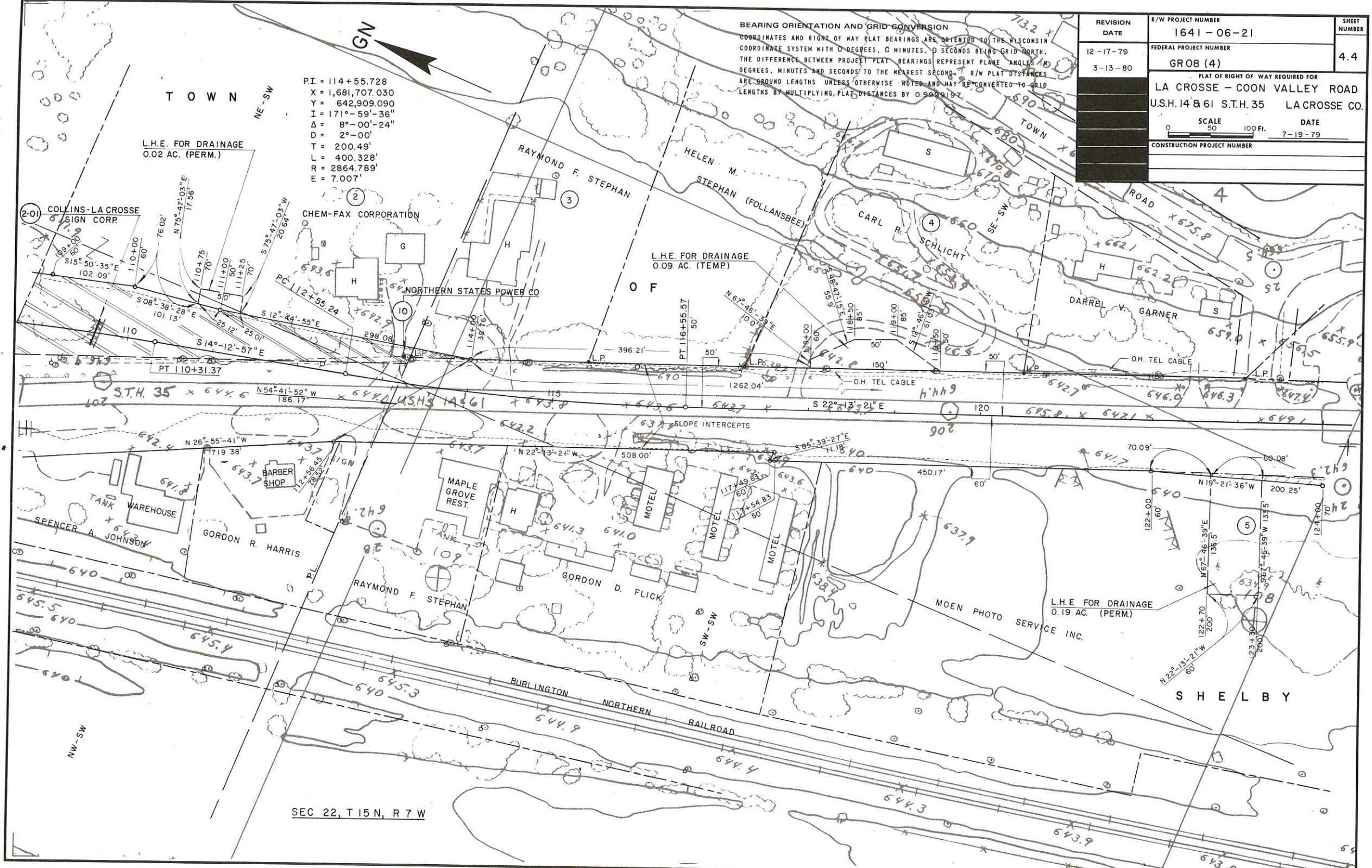
PI. = 114+55.728
 X = 1,681,707.030
 Y = 642,909.090
 I = 171°-59'-36"
 Δ = 8°-00'-24"
 D = 2°-00'
 T = 200.49'
 L = 400.328'
 R = 2864.789'
 E = 7.007'

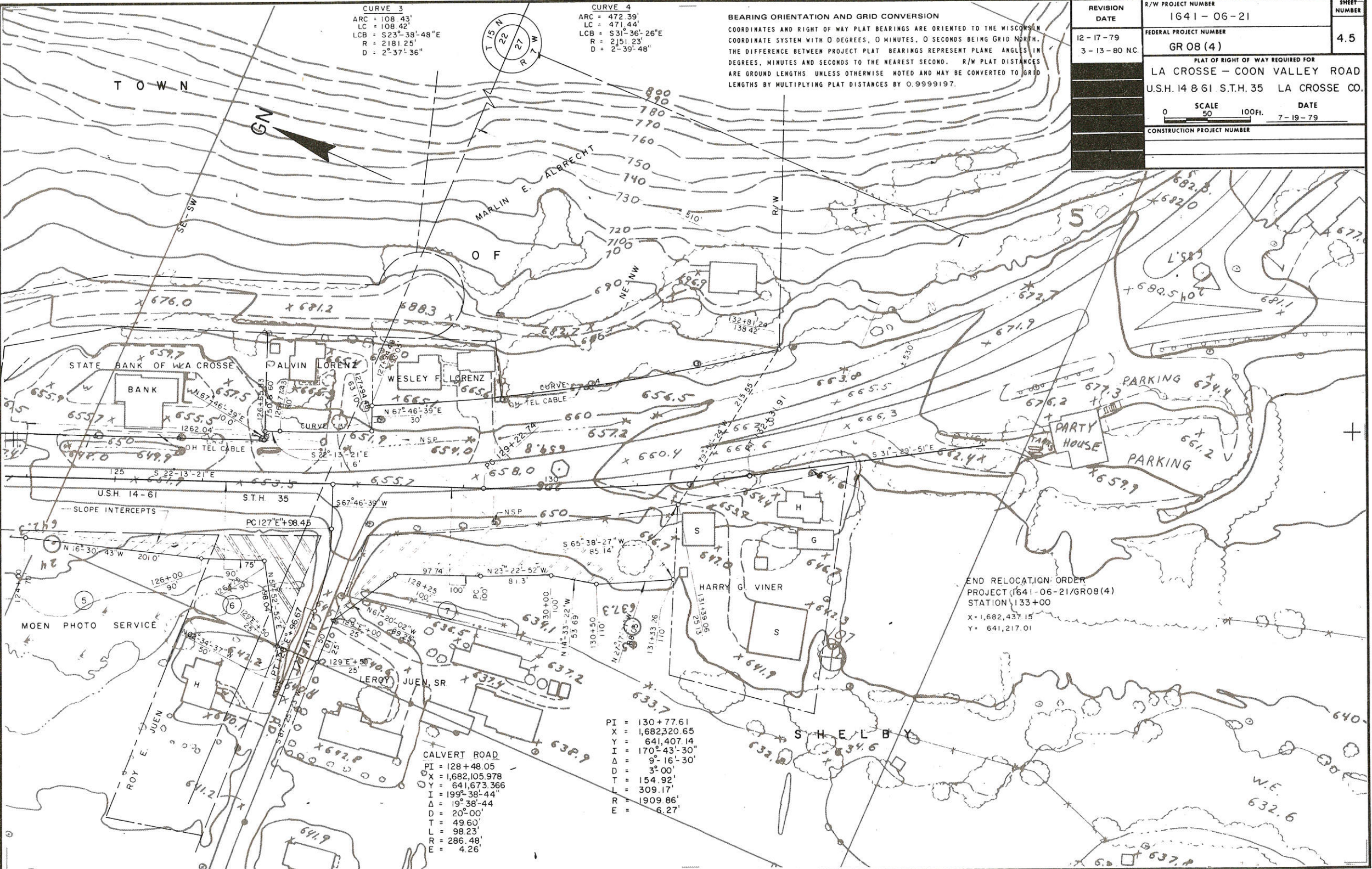
L.H.E. FOR DRAINAGE
 0.02 AC. (PERM.)

L.H.E. FOR DRAINAGE
 0.09 AC. (TEMP.)

L.H.E. FOR DRAINAGE
 0.19 AC. (PERM.)

SEC 22, T 15 N, R 7 W





CURVE 3
 ARC = 108.43'
 LC = 108.42'
 LCB = S23°-38'-48"E
 R = 2181.25'
 D = 2°-37'-36"

CURVE 4
 ARC = 472.39'
 LC = 471.44'
 LCB = S31°-36'-26"E
 R = 2151.23'
 D = 2°-39'-48"

BEARING ORIENTATION AND GRID CONVERSION
 COORDINATES AND RIGHT OF WAY PLAT BEARINGS ARE ORIENTED TO THE WISCONSIN COORDINATE SYSTEM WITH 0 DEGREES, 0 MINUTES, 0 SECONDS BEING GRID NORTH. THE DIFFERENCE BETWEEN PROJECT PLAT BEARINGS REPRESENT PLANE ANGLES IN DEGREES, MINUTES AND SECONDS TO THE NEAREST SECOND. R/W PLAT DISTANCES ARE GROUND LENGTHS UNLESS OTHERWISE NOTED AND MAY BE CONVERTED TO GRID LENGTHS BY MULTIPLYING PLAT DISTANCES BY 0.9999197.

REVISION DATE	R/W PROJECT NUMBER	SHEET NUMBER
12-17-79	1641-06-21	4.5
3-13-80 NC.	FEDERAL PROJECT NUMBER	
	GR08(4)	
PLAT OF RIGHT OF WAY REQUIRED FOR		
LA CROSSE - COON VALLEY ROAD		
U.S.H. 14 & 61 S.T.H. 35 LA CROSSE CO.		
SCALE	DATE	
0 50 100 Ft.	7-19-79	
CONSTRUCTION PROJECT NUMBER		

END RELOCATION ORDER
 PROJECT 1641-06-21/GR08(4)
 STATION 133+00
 X = 1,682,437.15
 Y = 641,217.01

CALVERT ROAD
 PI = 128+48.05
 X = 1,682,105.978
 Y = 641,673.366
 I = 199°-38'-44"
 Δ = 19°-38'-44"
 D = 20°-00'
 T = 49.60'
 L = 98.23'
 R = 286.48'
 E = 4.26'

PI = 130+77.61
 X = 1,682,320.65
 Y = 641,407.14
 I = 170°-43'-30"
 Δ = 9°-16'-30"
 D = 3°-00'
 T = 154.92'
 L = 309.17'
 R = 1909.86'
 E = 6.27'

260