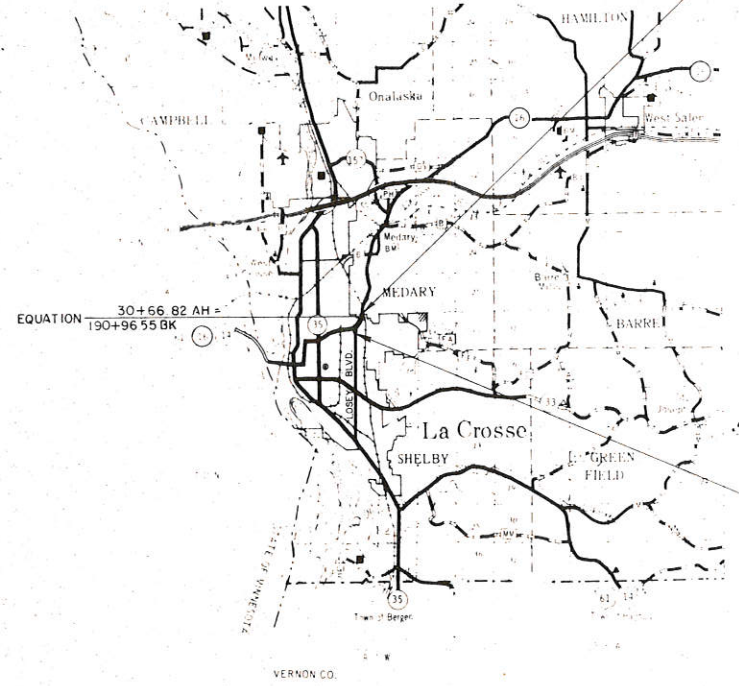
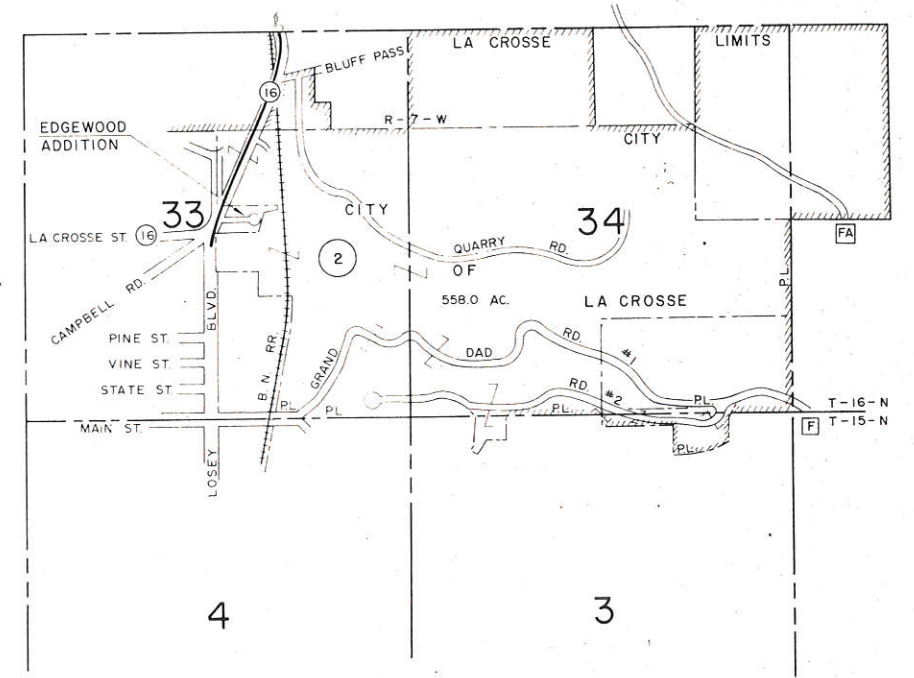
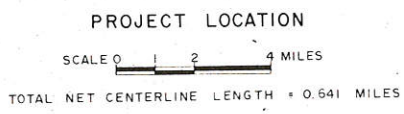


R. W. PROJECT NUMBER	7575-02-21	SHEET NUMBER	4.0	TOTAL SHEETS	
FEDERAL PROJECT NUMBER		PLAT OF RIGHT OF WAY REQUIRED FOR			
LA CROSSE - WEST SALEM ROAD (MONEGAN OVERHEAD)					
S.T.H. 16 LA CROSSE CO.					
CONSTRUCTION PROJECT NUMBER					

END RELOCATION ORDER
 PROJECT 7575-02-21
 STATION 33+17.5
 X = 1,679,127.09
 Y = 668,208.34
 ±300 FEET NORTH AND ±890 FEET EAST OF THE SOUTH ONE-QUARTER OF SECTION 28, T 16 N, R 7 W. CDR.



BEGIN RELOCATION ORDER
 PROJECT 7575-02-21
 STATION 159+65.15
 X = 1,678,200.587
 Y = 665,061.080
 S 47°-51'-42"E - 333.02 FEET FROM THE SOUTHWEST CORNER OF LOT 25 HILL VIEW PLACE ADDITION, CITY OF LA CROSSE



PROPERTY BOUNDARIES AND ACREAGES
 NOT TO SCALE

ALL COORDINATES SHOWN ON THIS PLAN ARE REFERENCED TO THE WISCONSIN COORDINATE SYSTEM, SOUTH ZONE.

REVISION DATE	STATE OF WISCONSIN DEPARTMENT OF TRANSPORTATION
10-14-80	Approved Date 2-7-80 TR Kinney District Transportation Director
	Approved Date [Signature] Director, Bureau of State Lands
	U.S. DEPARTMENT OF TRANSPORTATION FEDERAL HIGHWAY ADMINISTRATION REGION 5 WISCONSIN DIVISION
Approved	
Date	

SCHEDULE OF LANDS AND INTERESTS REQUIRED

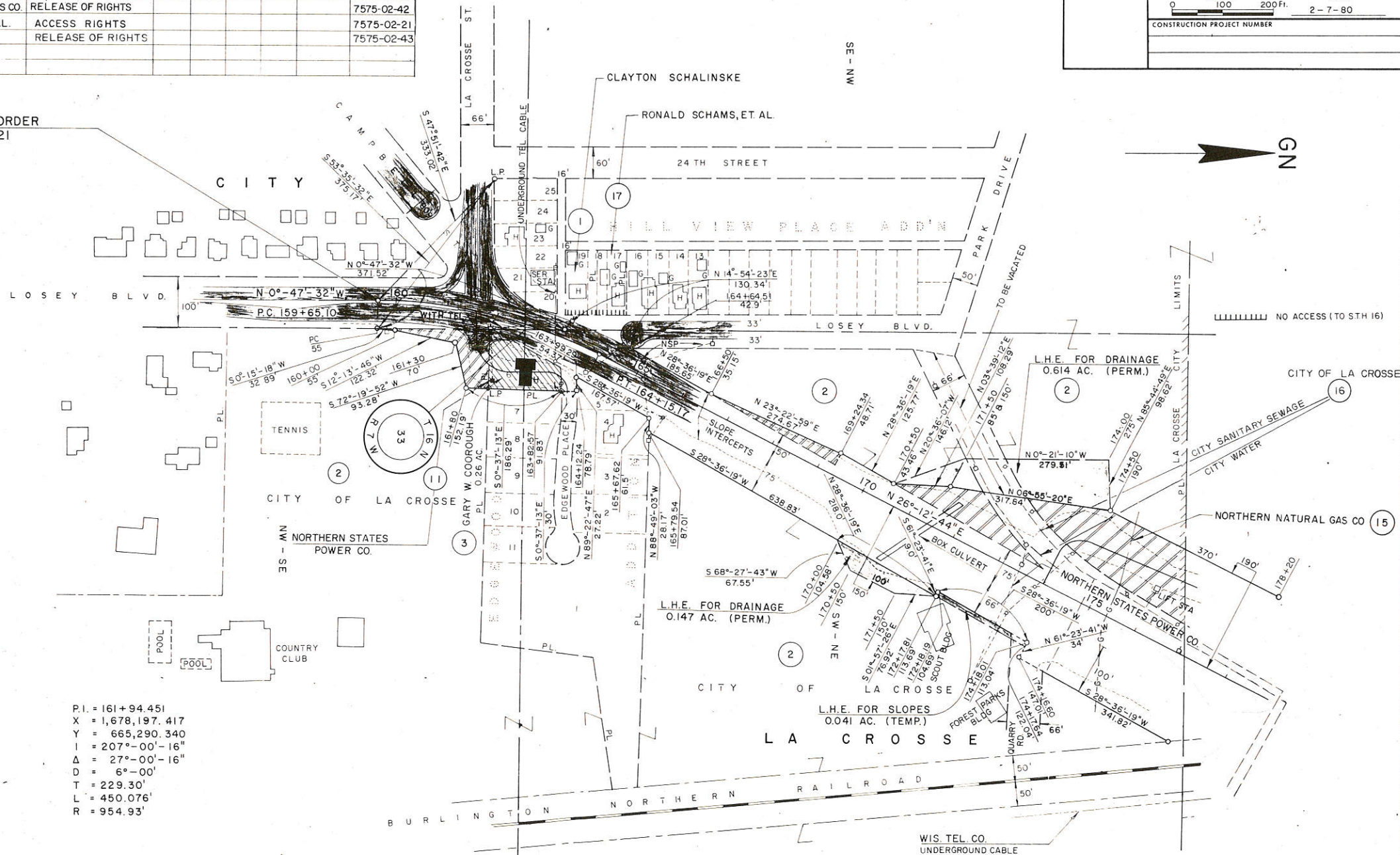
PARCEL NUMBER	SHEET NUMBER	OWNER	INTEREST	L.H.E. ACRES	ACRES REQUIRED			TOTAL REMAINING ACRES	OPERATIONS PROJECT I.D.
					NEW	EXIST	TOTAL		
1	4.1	CLAYTON SCHALINSKE	ACCESS RIGHTS					7575-02-21	
2	4.1	CITY OF LA CROSSE	FEE & L.H.E.	0.802	1.29	—	1.29	556.71	
3	4.1	GARY W. COOROUGH	FEE SIMPLE		0.26	—	0.26	0	
11	4.1,42	NORTHERN STATES POWER CO.	RELEASE OF RIGHTS					7575-02-40	
15	4.1	NORTHERN NATURAL GAS CO.	RELEASE OF RIGHTS					7575-02-42	
17	"	RONALD SCHAMS, ET AL.	ACCESS RIGHTS					7575-02-21	
16	4.1,42	CITY OF LA CROSSE	RELEASE OF RIGHTS					7575-02-43	

BEARING ORIENTATION AND GRID CONVERSION

COORDINATES AND RIGHT OF WAY PLAT BEARINGS ARE ORIENTED TO THE WISCONSIN COORDINATE SYSTEM WITH 0 DEGREES, 0 MINUTES, 0 SECONDS BEING GRID NORTH. THE DIFFERENCE BETWEEN PROJECT PLAT BEARINGS REPRESENT PLANE ANGLES IN DEGREES, MINUTES AND SECONDS TO THE NEAREST SECOND. R/W PLAT DISTANCES ARE GROUND LENGTHS UNLESS OTHERWISE NOTED AND MAY BE CONVERTED TO GRID LENGTHS BY MULTIPLYING PLAT DISTANCES BY 0.99993050.

REVISION DATE	R/W PROJECT NUMBER	SHEET NUMBER
10-14-80	7575-02-21	4.1
FEDERAL PROJECT NUMBER		
PLAT OF RIGHT OF WAY REQUIRED FOR LA CROSSE - WEST SALEM ROAD (MONEGAN OVERHEAD)		
S.T.H. 16		LA CROSSE CO.
SCALE	DATE	
0 100 200 Ft.	2-7-80	
CONSTRUCTION PROJECT NUMBER		

BEGIN RELOCATION ORDER
PROJECT 7575-02-21
STATION 159+65.15
X = 1,678,200.587
Y = 665,061.080



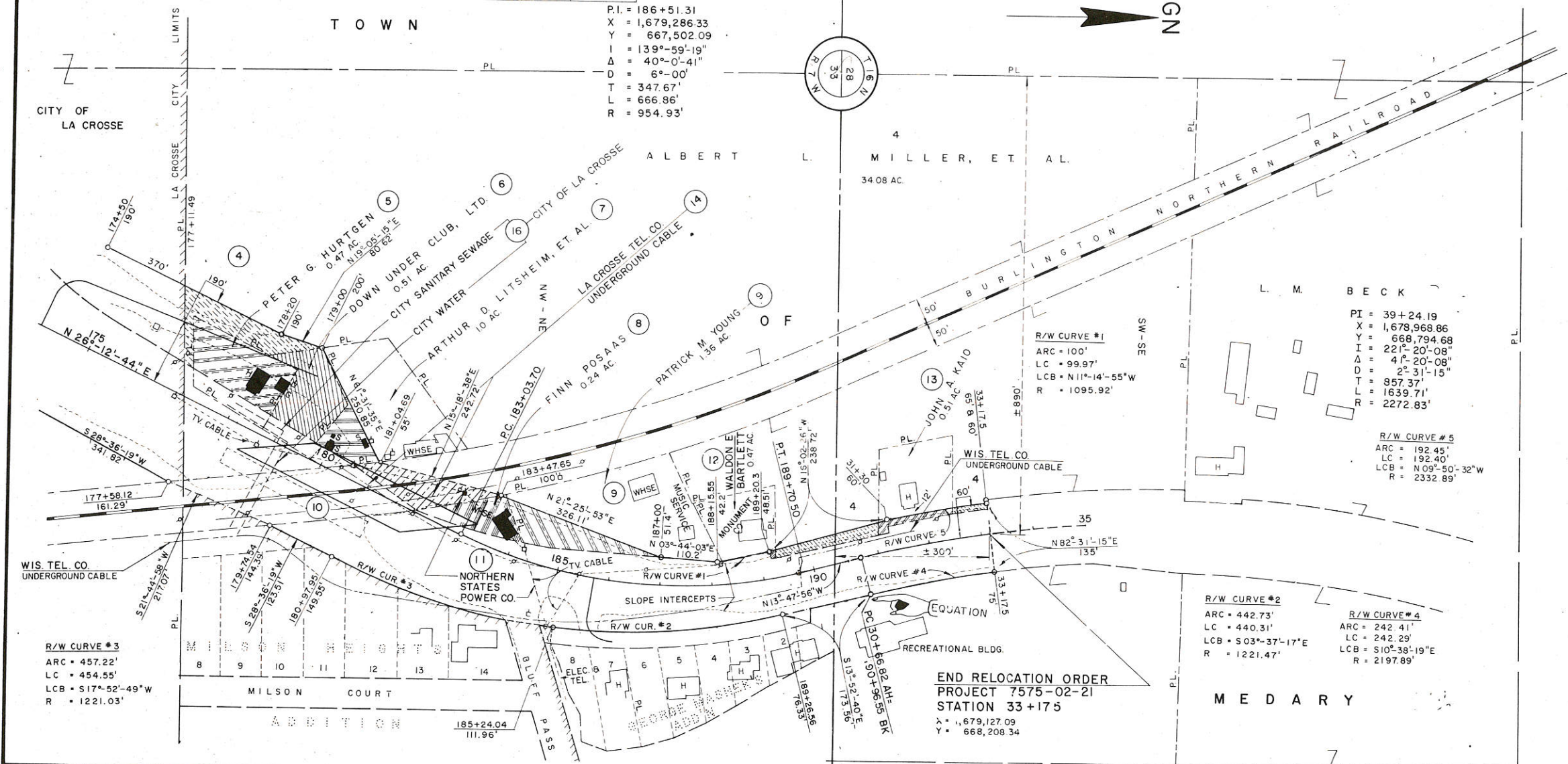
P.I. = 161+94.451
X = 1,678,197.417
Y = 665,290.340
I = 207°-00'-16"
Δ = 27°-00'-16"
D = 6°-00'
T = 229.30'
L = 450.076'
R = 954.93'

SCHEDULE OF LANDS AND INTERESTS REQUIRED

PARCEL NUMBER	SHEET NUMBER	OWNER	INTEREST	L & E ACRES	ACRES REQUIRED			TOTAL REMAINING ACRES	OPERATIONS PROJECT I.D.
					NEW	EXIST	TOTAL		
4	4.2	ALBERT L. MILLER, ET. AL.	FEE SIMPLE		0.37	—	0.37	33.71	7575-02-21
5	"	PETER G. HURGTEN	"		0.38	0.09	0.47	0	"
6	"	DOWN UNDER CLUB, LTD.	"		0.43	0.08	0.51	0	"
7	"	ARTHUR D. LITSHEIM, ET. AL.	"		0.17	—	0.17	0.83	"
8	"	FINN POSAAS	"		0.24	—	0.24	0	"
9	"	PATRICK M YOUNG	"		0.28	—	0.28	1.08	"
10	"	BURLINGTON NORTHERN RR.	HIGHWAY EASEMENT		0.99	—	—	—	"
11	4.1, 4.2	NORTHERN STATES POWER CO.	RELEASE OF RIGHTS		—	—	—	—	7575-02-40
12	4.2	WALDON E. BARTLETT	FEE SIMPLE		0.01	—	0.01	0.46	7575-02-21
13	"	JOHN A. KAIO	"		0.05	—	0.05	0.46	"
14	4.2	LACROSSE TEL CO.	RELEASE OF RIGHTS		—	—	—	—	7575-02-41
16	4.1, 4.2	CITY OF LA CROSSE	"		—	—	—	—	7575-02-43

BEARING ORIENTATION AND GRID CONVERSION
 COORDINATES AND RIGHT OF WAY PLAT BEARINGS ARE ORIENTED TO THE WISCONSIN COORDINATE SYSTEM WITH 0 DEGREES, 0 MINUTES, 0 SECONDS BEING GRID NORTH. THE DIFFERENCE BETWEEN PROJECT PLAT BEARINGS REPRESENT PLANE ANGLES IN DEGREES, MINUTES AND SECONDS TO THE NEAREST SECOND. R/W PLAT DISTANCES ARE GROUND LENGTHS UNLESS OTHERWISE NOTED AND MAY BE CONVERTED TO GRID LENGTHS BY MULTIPLYING PLAT DISTANCES BY 0.99993050

REVISION DATE	R/W PROJECT NUMBER	SHEET NUMBER
10-14-80	7575-02-21	4.2
FEDERAL PROJECT NUMBER		
PLAT OF RIGHT OF WAY REQUIRED FOR LA CROSSE - WEST SALEM ROAD (MONEGAN OVERHEAD)		
S.T.H. 16		LA CROSSE CO.
SCALE	DATE	
0 100 200 Ft.	2-7-80	
CONSTRUCTION PROJECT NUMBER		



P.I. = 186+51.31
 X = 1,679,286.33
 Y = 667,502.09
 I = 139°-59'-19"
 Δ = 40°-0'-41"
 D = 6°-00'
 T = 347.67'
 L = 666.86'
 R = 954.93'

R/W CURVE #1
 ARC = 100'
 LC = 99.97'
 LCB = N11°-14'-55"W
 R = 1095.92'

PI = 39+24.19
 X = 1,678,968.86
 Y = 668,794.68
 I = 221°-20'-08"
 Δ = 4°-20'-08"
 D = 2°-31'-15"
 T = 857.37'
 L = 1639.71'
 R = 2272.83'

R/W CURVE #5
 ARC = 192.45'
 LC = 192.40'
 LCB = N09°-50'-32"W
 R = 2332.89'

R/W CURVE #2
 ARC = 442.73'
 LC = 440.31'
 LCB = S03°-37'-17"E
 R = 1221.47'

R/W CURVE #4
 ARC = 242.41'
 LC = 242.29'
 LCB = S10°-38'-19"E
 R = 2197.89'

R/W CURVE #3
 ARC = 457.22'
 LC = 454.55'
 LCB = S17°-52'-49"W
 R = 1221.03'

END RELOCATION ORDER
 PROJECT 7575-02-21
 STATION 33+175
 X = 1,679,127.09
 Y = 668,208.34

MEDARY

260