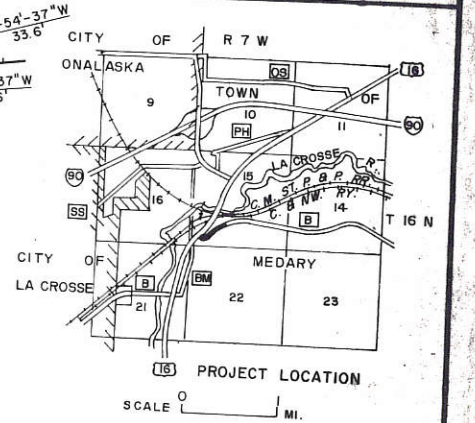
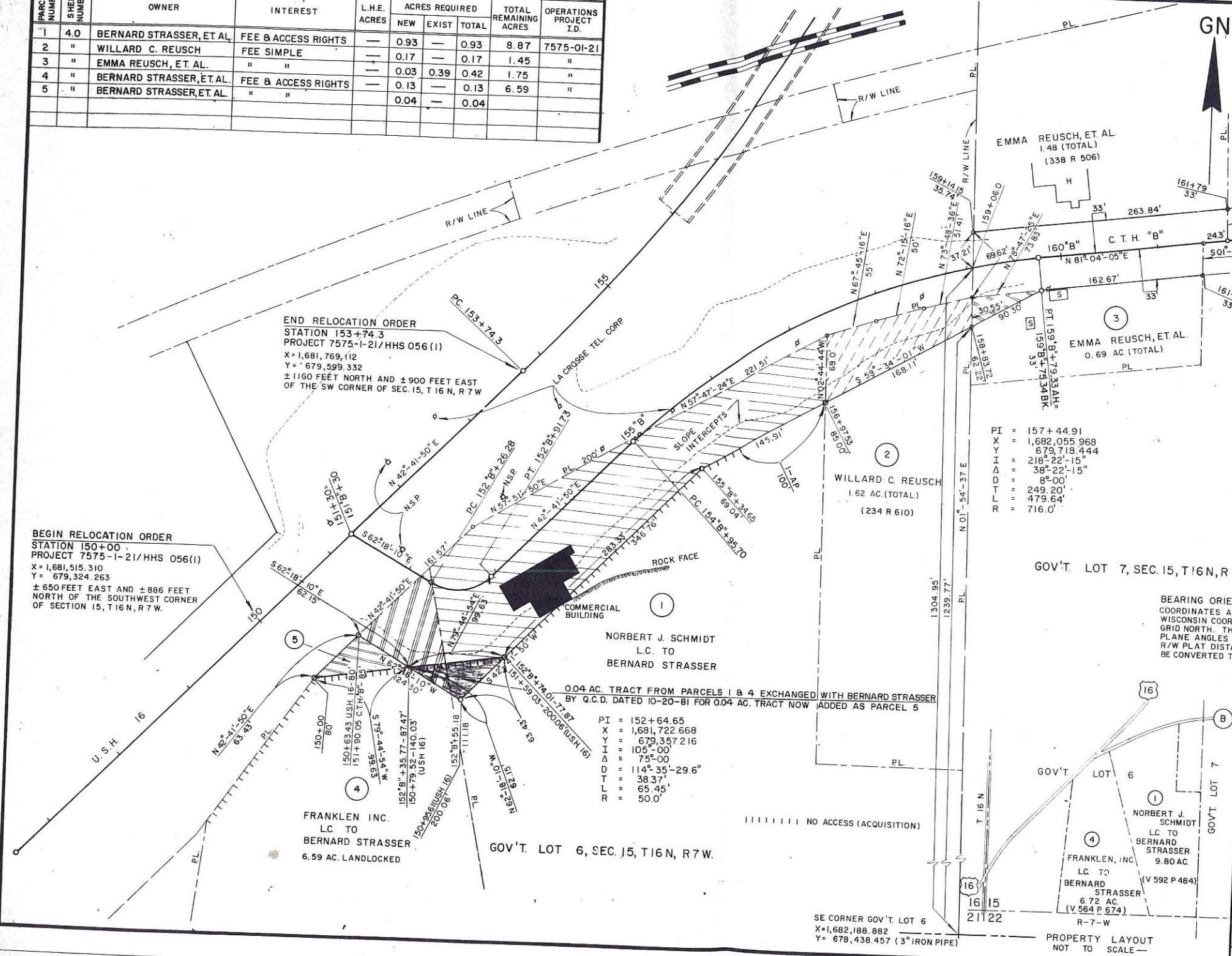


SCHEDULE OF LANDS AND INTERESTS REQUIRED									
PARCEL NUMBER	SHEET NUMBER	OWNER	INTEREST	L.H.E. ACRES	ACRES REQUIRED		TOTAL REMAINING ACRES	OPERATIONS PROJECT I.D.	
					NEW	EXIST			
1	4.0	BERNARD STRASSER, ET AL.	FEE & ACCESS RIGHTS	—	0.93	—	0.93	8.87	7575-01-21
2	"	WILLARD C. REUSCH	FEE SIMPLE	—	0.17	—	0.17	1.45	"
3	"	EMMA REUSCH, ET AL.	"	—	0.03	0.39	0.42	1.75	"
4	"	BERNARD STRASSER, ET AL.	FEE & ACCESS RIGHTS	—	0.13	—	0.13	6.59	"
5	"	BERNARD STRASSER, ET AL.	"	—	0.04	—	0.04		

R/W PROJECT NUMBER	7575-1-21	SHEET NUMBER	4.0	TOTAL SHEETS	
FEDERAL PROJECT NUMBER	HHS 056 (I)				
PLAT OF RIGHT OF WAY REQUIRED FOR LA CROSSE - WEST SALEM ROAD (INTERSECTION U.S.H. 16 AND C.T.H. "B") U.S.H. 16 LA CROSSE COUNTY					
SCALE 1" = 50'					
CONSTRUCTION PROJECT NUMBER					



PI = 157 + 44.91
 X = 1,682,055.969
 Y = 679,718.444
 I = 218°-22'-15"
 Δ = 38°-22'-15"
 D = 8°-00'
 T = 249.20'
 L = 479.64'
 R = 716.0'

BEGIN RELOCATION ORDER
 STATION 150+00
 PROJECT 7575-1-21/HHS 056(I)
 X = 1,681,515.310
 Y = 679,324.263
 ± 650 FEET EAST AND ± 886 FEET NORTH OF THE SOUTHWEST CORNER OF SECTION 15, T16N, R7W.

END RELOCATION ORDER
 STATION 153+74.3
 PROJECT 7575-1-21/HHS 056(I)
 X = 1,681,769.112
 Y = 679,599.332
 ± 1160 FEET NORTH AND ± 900 FEET EAST OF THE SW CORNER OF SEC. 15, T16N, R7W

PI = 152 + 64.65
 X = 1,681,722.668
 Y = 679,357.216
 I = 105°-00'
 Δ = 75°-00'
 D = 114°-35'-29.6"
 T = 38.37'
 L = 65.45'
 R = 50.0'

BEARING ORIENTATION AND GRID CONVERSION
 COORDINATES AND RIGHT OF WAY PLAT BEARINGS ARE ORIENTED TO THE WISCONSIN COORDINATE SYSTEM WITH 0 DEGREES, 0 MINUTES, 0 SECONDS BEING GRID NORTH. THE DIFFERENCE BETWEEN PROJECT PLAT BEARINGS REPRESENT PLANE ANGLES IN DEGREES, MINUTES AND SECONDS TO THE NEAREST SECOND. R/W PLAT DISTANCES ARE GROUND LENGTHS UNLESS OTHERWISE NOTED AND MAY BE CONVERTED TO GRID LENGTHS BY MULTIPLYING PLAT DISTANCES BY 0.99992270

REVISION DATE	STATE OF WISCONSIN DEPARTMENT OF TRANSPORTATION DIVISION OF HIGHWAYS
2-21-78	Correct:
10-26-81	Date 11-7-77 <i>R. J. Mueller</i> District Engineer
	Recommended for Approval:
	Date 11/10/77 <i>B. J. Mueller</i> Director, Bureau of Right of Way
	U.S. DEPARTMENT OF TRANSPORTATION FEDERAL HIGHWAY ADMINISTRATION REGION 5 WISCONSIN DIVISION
	Approved:
	Date