

SCHEDULE OF LANDS AND INTERESTS REQUIRED

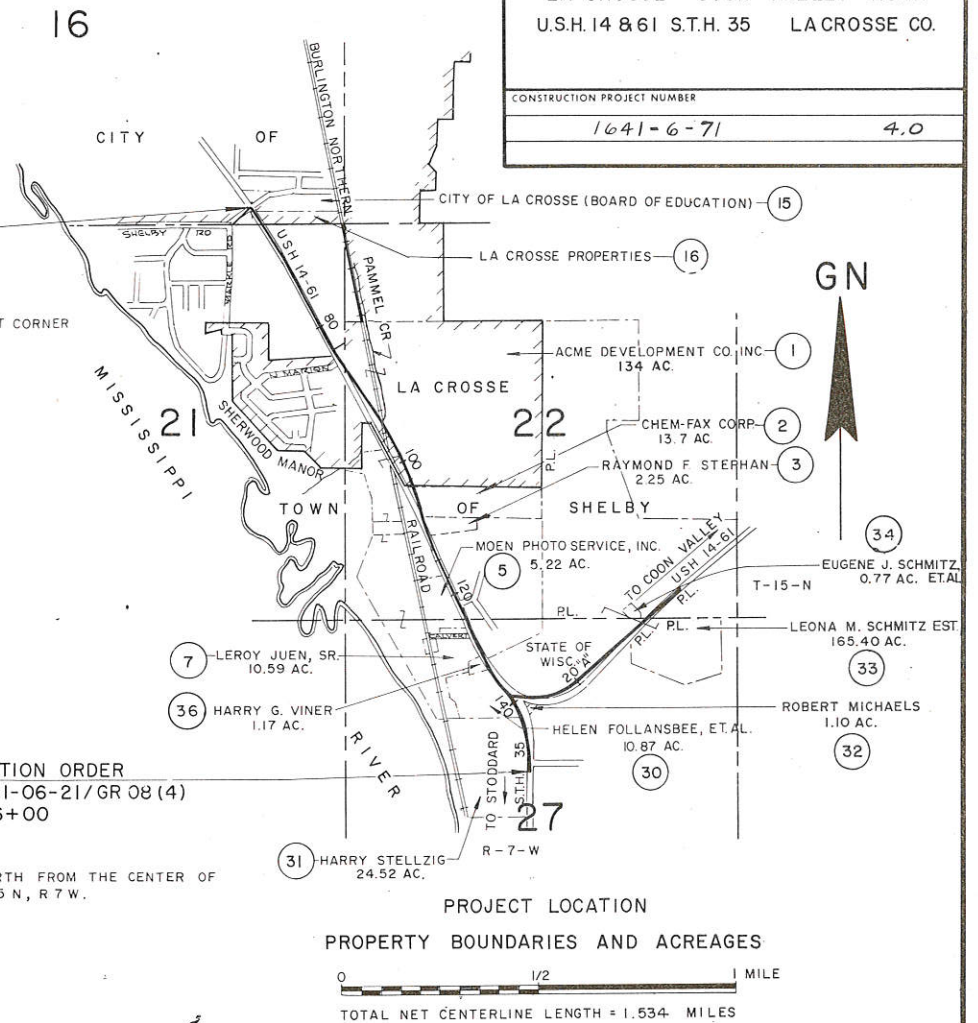
PARCEL NUMBER	SHEET NUMBER	OWNER	INTEREST	L.H.E. ACRES	ACRES REQUIRED			TOTAL REMAINING ACRES	OPERATIONS PROJECT I.D.
					NEW	EXIST	TOTAL		
1	4.2,4.3	ACME DEVELOPMENT CO.	FEE SIMPLE		5.32	--	5.32	128.65	1641-06-21
2	4.3,4.4	CHEM-FAX CORPORATION	FEE & L.H.E.	0.02	0.63	--	0.63	13.07	"
3	4.4	RAYMOND F. STEPHAN	FEE SIMPLE		0.01	--	0.01	2.24	"
4	"	CARL R. SCHLICHT	L.H.E.	0.09					"
5	4.4,4.5	MOEN PHOTO SERVICE	FEE SIMPLE & L.H.E.	0.19	0.11	--	0.11	5.11	"
6	4.5	ROY E. JUEN	FEE SIMPLE		0.14	--	0.14	0.76	"
7	"	LE ROY JUEN, SR.	FEE, L.H.E. & ACCESS RIGHTS	0.11	0.54	--	0.54	10.05	"
8	4.1,4.2	CITY OF LA CROSSE (WATER UTILITY)	RELEASE OF RIGHTS						1641-06-40
9	4.2,4.3	CITY OF LA CROSSE (SANITARY SEWAGE UTILITY)	RELEASE OF RIGHTS						1641-06-41
10	4.3,4.4	NORTHERN STATES POWER CO.	"						1641-06-42
11	4.3	LA CROSSE TEL. CO.	"						1641-06-43
12	4.2,4.3	CITY OF LA CROSSE (STORM SEWER)	RELEASE OF RIGHTS						1641-06-44
13	4.3	BURLINGTON NORTHERN RAILROAD	AGREEMENT						1641-06-21
14	4.3	NORTHERN STATES POWER CO.	RELEASE OF RIGHTS						1641-06-42
1-01	4.2	NATIONAL ADVERTISING CO.	SIGN ACQUISITION						1641-06-21
1-02	"	HOESCHLER REALTY CORP.	"						"
1-03	4.3	COLLINS-LA CROSSE SIGN CORP.	"						"
2-01	4.4	COLLINS-LA CROSSE SIGN CORP.	"						"
15	4.1	CITY OF LA CROSSE, BOARD OF EDUCATION	FEE & L.H.E.	0.01	0.01		0.01		"
16	"	LA CROSSE PROPERTIES	"	0.01	0.02		0.02		"
17	"	BOBBIE B. CHRISTIANSON	"	0.01	0.01		0.01		"
19	"	LILLIAN SCHILLING	"	0.01					"
20	"	EDNA T. MONSKI ESTATE TRUST	"	0.02					"
21	"	HAZEL BRAUN, ET AL.	"	0.06					"
22	"	CHARLES C. COLLINS	"	0.04					"
23	"	THOMAS S. THOMPSON	"	0.01					"
24	"	ELMER R. ARNOLD	"	0.01					"
25	4.1,4.2	CLARENCE O. ZIELKE	"	0.02					"
26	4.2	CHARLES P. NICHOLS, ET AL.	"	0.01					"
27	"	RAYMOND LEE	FEE & L.H.E.	0.02	0.01		0.01		"
28	"	EUGENE G. LEONARD, ET AL.	"	0.02	0.01		0.01		"
29	4.1	JAY FRANK HOESCHLER	"	0.02	0.02		0.02		"
30	4.5,6,8	HELEN FOLLANSBEE, ET AL.	FEE & L.H.E. & ACCESS RIGHTS	0.42	2.73	1.5	4.23	6.64	"
31	4.6,4.8	HARRY STELLZIG	FEE & ACCESS RIGHTS		0.30	0.5	0.80	23.72	"
32	4.6,4.8	ROBERT MICHAELS	"		0.25	0.57	0.82	0.52	"
33	4.7	LEONA M. SCHMITZ ESTATE	FEE, L.H.E. & ACCESS RTS.	0.02	0.70	1.4	2.10	163.30	"
34	4.7	EUGENE J. SCHMITZ, ET AL.	FEE SIMPLE, AC. RTS.		0.12		0.12	0.65	"
32-01	4.6	COLLINS-LA CROSSE SIGN CORP.	SIGN ACQUISITION						"
33-01	4.7	NATIONAL ADVERTISING CO.	"						"
33-03	"	WHITE ADVERTISING INTERNATIONAL	"						"
33-04	"	CLARK REFINERY CORP.	"						"
36	4.5	HARRY G. VINER	FEE & L.H.E. & ACCESS RIGHTS	0.11	0.49		0.49	0.68	1641-06-21
38	4.5	THOMAS C. BROBECK	ACCESS RIGHTS						"
39	4.6,4.8	DONALD C. BETZ	"						"
40	4.6	ROBERT SHIMANSKI	"						"
41	4.7	EDGAR MUNDSTOCK	"						"

BEGIN RELOCATION ORDER
PROJECT 1641-06-21/GR 08 (4)
STATION 65+00

X = 1,679,388.68
Y = 647,257.55
N 77° 14' 47" W - 1163.5 FEET FROM THE SOUTHEAST CORNER
OF SECTION 16, T 15 N, R 7 W.

END RELOCATION ORDER
PROJECT 1641-06-21/GR 08 (4)
STATION 146+00

X = 1,682,904.763
Y = 640,035.753
± 960 FEET NORTH FROM THE CENTER OF
SECTION 27, T 15 N, R 7 W.



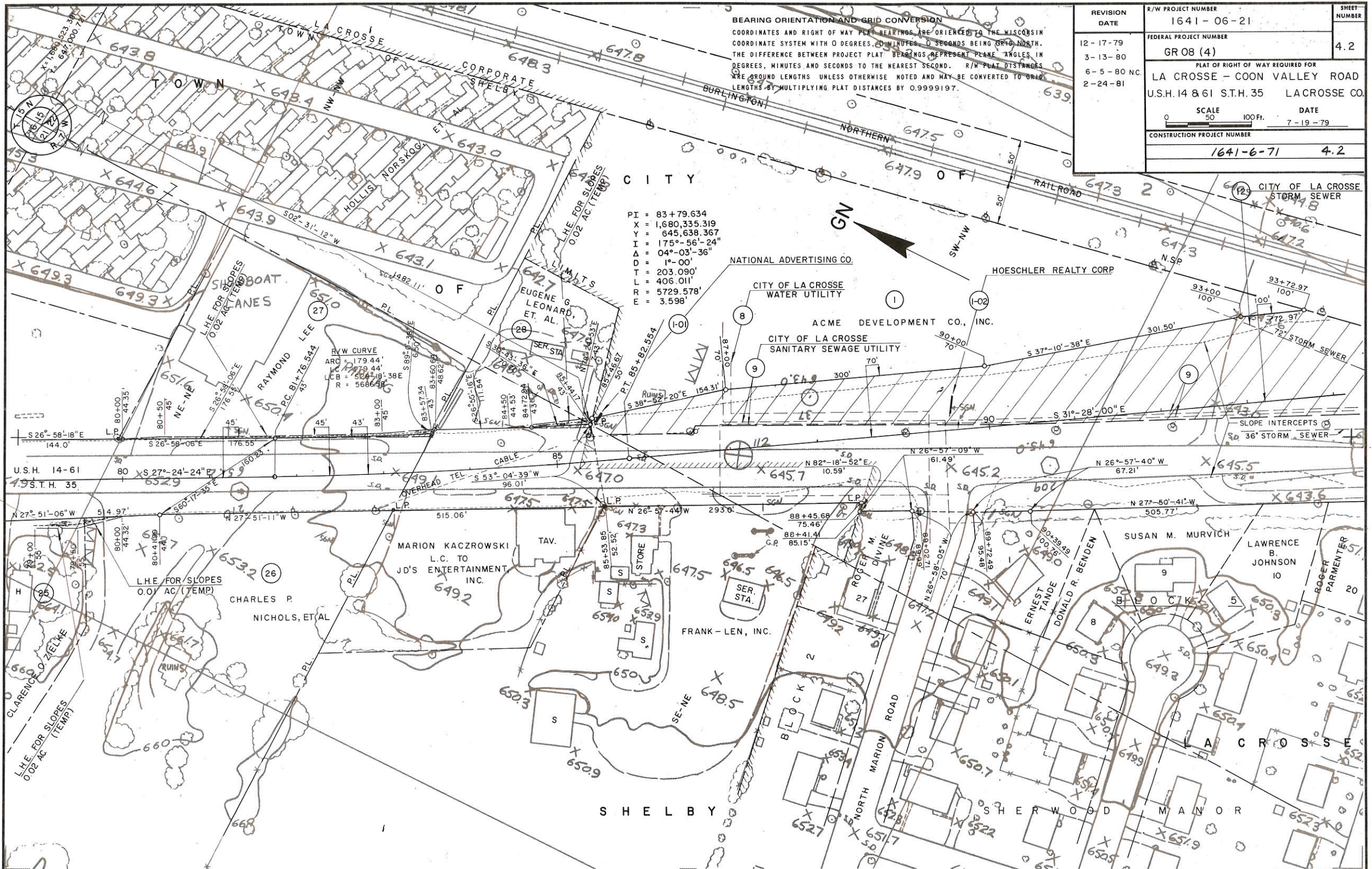
R/W PROJECT NUMBER	1641-06-21	SHEET NUMBER	4.0	SH.	
FEDERAL PROJECT NUMBER	GR 08 (4)				
PLAT OF RIGHT OF WAY REQUIRED FOR LA CROSSE - COON VALLEY ROAD U.S.H. 14 & 61 S.T.H. 35 LA CROSSE CO.					
CONSTRUCTION PROJECT NUMBER					
1641-6-71			4.0		

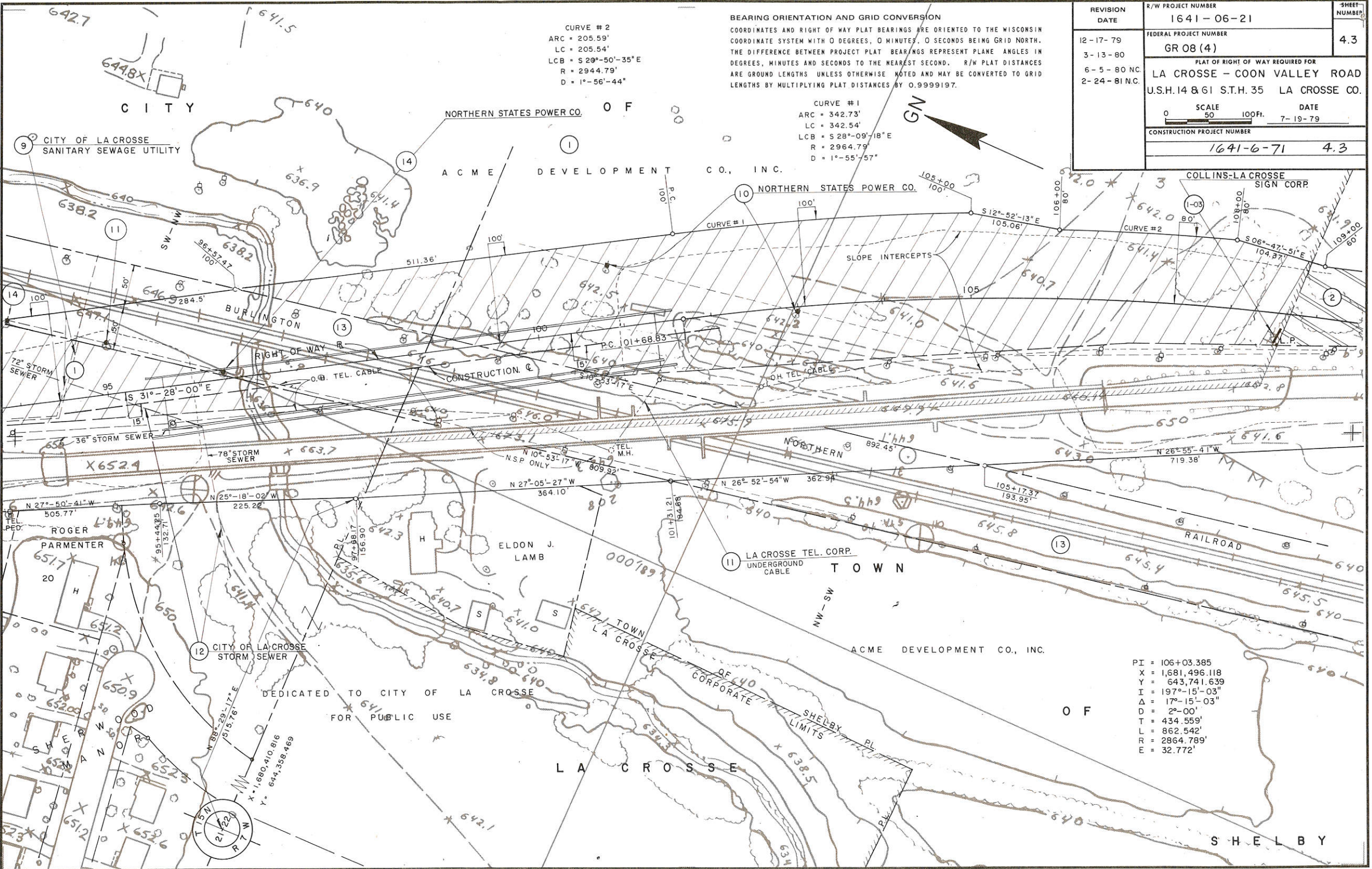
ALL COORDINATES SHOWN ON THIS PLAN ARE REFERENCED TO THE WISCONSIN COORDINATE SYSTEM, SOUTH ZONE.

REVISION DATE	STATE OF WISCONSIN DEPARTMENT OF TRANSPORTATION
12-17-79	Approved:
3-13-80	Date 7-19-79 <i>T.R. Kinsey</i> District Transportation Director
6-5-80	Approved:
2-24-81	Date 7/23/79 <i>B.S. Mullon</i> Director, Bureau of Real Estate
	U.S. DEPARTMENT OF TRANSPORTATION FEDERAL HIGHWAY ADMINISTRATION REGION 5 WISCONSIN DIVISION
	Approved:
	Date _____ Division Administrator

BEARING ORIENTATION AND GRID CONVERSION
 COORDINATES AND RIGHT OF WAY PLAT BEARINGS ARE ORIENTED TO THE WISCONSIN COORDINATE SYSTEM WITH 0 DEGREES, 0 MINUTES, 0 SECONDS BEING GRID NORTH. THE DIFFERENCE BETWEEN PROJECT PLAT BEARINGS REPRESENT PLANE ANGLES IN DEGREES, MINUTES AND SECONDS TO THE NEAREST SECOND. R/W PLAT DISTANCES ARE GROUND LENGTHS UNLESS OTHERWISE NOTED AND MAY BE CONVERTED TO GRID LENGTHS BY MULTIPLYING PLAT DISTANCES BY 0.9999197.

REVISION DATE	R/W PROJECT NUMBER	SHEET NUMBER
12-17-79	1641-06-21	4.2
3-13-80	FEDERAL PROJECT NUMBER	
6-5-80 NC	GR 08 (4)	
2-24-81	PLAT OF RIGHT OF WAY REQUIRED FOR	
	LA CROSSE - COON VALLEY ROAD	
	U.S.H. 14 & 61 S.T.H. 35 LACROSSE CO.	
	SCALE	DATE
	0 50 100 Ft.	7-19-79
	CONSTRUCTION PROJECT NUMBER	
	1641-6-71	4.2





CURVE #2
 ARC = 205.59'
 LC = 205.54'
 LCB = S 20°-50'-35" E
 R = 2944.79'
 D = 1°-56'-44"

BEARING ORIENTATION AND GRID CONVERSION
 COORDINATES AND RIGHT OF WAY PLAT BEARINGS ARE ORIENTED TO THE WISCONSIN COORDINATE SYSTEM WITH 0 DEGREES, 0 MINUTES, 0 SECONDS BEING GRID NORTH. THE DIFFERENCE BETWEEN PROJECT PLAT BEARINGS REPRESENT PLANE ANGLES IN DEGREES, MINUTES AND SECONDS TO THE NEAREST SECOND. R/W PLAT DISTANCES ARE GROUND LENGTHS UNLESS OTHERWISE NOTED AND MAY BE CONVERTED TO GRID LENGTHS BY MULTIPLYING PLAT DISTANCES BY 0.9999197.

CURVE #1
 ARC = 342.73'
 LC = 342.54'
 LCB = S 28°-09'-18" E
 R = 2964.79'
 D = 1°-55'-57"

REVISION DATE	R/W PROJECT NUMBER	SHEET NUMBER
12-17-79	1641-06-21	4.3
3-13-80	FEDERAL PROJECT NUMBER	
6-5-80 NC	GR 08 (4)	
2-24-81 NC	PLAT OF RIGHT OF WAY REQUIRED FOR	
	LA CROSSE - COON VALLEY ROAD	
	U.S.H. 14 & 61 S.T.H. 35 LA CROSSE CO.	
	SCALE	DATE
	0 50 100 FT.	7-19-79
	CONSTRUCTION PROJECT NUMBER	
	1641-6-71	4.3

PI = 106+03.385
 X = 1,681,496.118
 Y = 643,741.639
 I = 197°-15'-03"
 Δ = 17°-15'-03"
 D = 2°-00"
 T = 434.559'
 L = 862.542'
 R = 2864.789'
 E = 32.772'



BEARING ORIENTATION AND GRID CONVERSION
 COORDINATES AND RIGHT OF WAY PLAT BEARINGS ARE ORIENTED TO THE WISCONSIN COORDINATE SYSTEM WITH 0 DEGREES, 0 MINUTES, 0 SECONDS BEING GRID NORTH. THE DIFFERENCE BETWEEN PROJECT PLAT BEARINGS REPRESENT PLANE ANGLES IN DEGREES, MINUTES AND SECONDS TO THE NEAREST SECOND. R/W PLAT DISTANCES ARE GROUND LENGTHS UNLESS OTHERWISE NOTED AND MAY BE CONVERTED TO GRID LENGTHS BY MULTIPLYING PLAT DISTANCES BY 0.9999197.

REVISION DATE	R/W PROJECT NUMBER	SHEET NUMBER
12-17-79	1641-06-21	4.4
3-13-80	FEDERAL PROJECT NUMBER	
6-5-80	GROB (4)	
2-24-81	PLAT OF RIGHT OF WAY REQUIRED FOR LA CROSSE - COON VALLEY ROAD U.S.H. 14 & 61 S.T.H. 35 LACROSSE CO.	
SCALE 0 50 100 Ft.		DATE 7-19-79
CONSTRUCTION PROJECT NUMBER		
1641-6-71		4.4

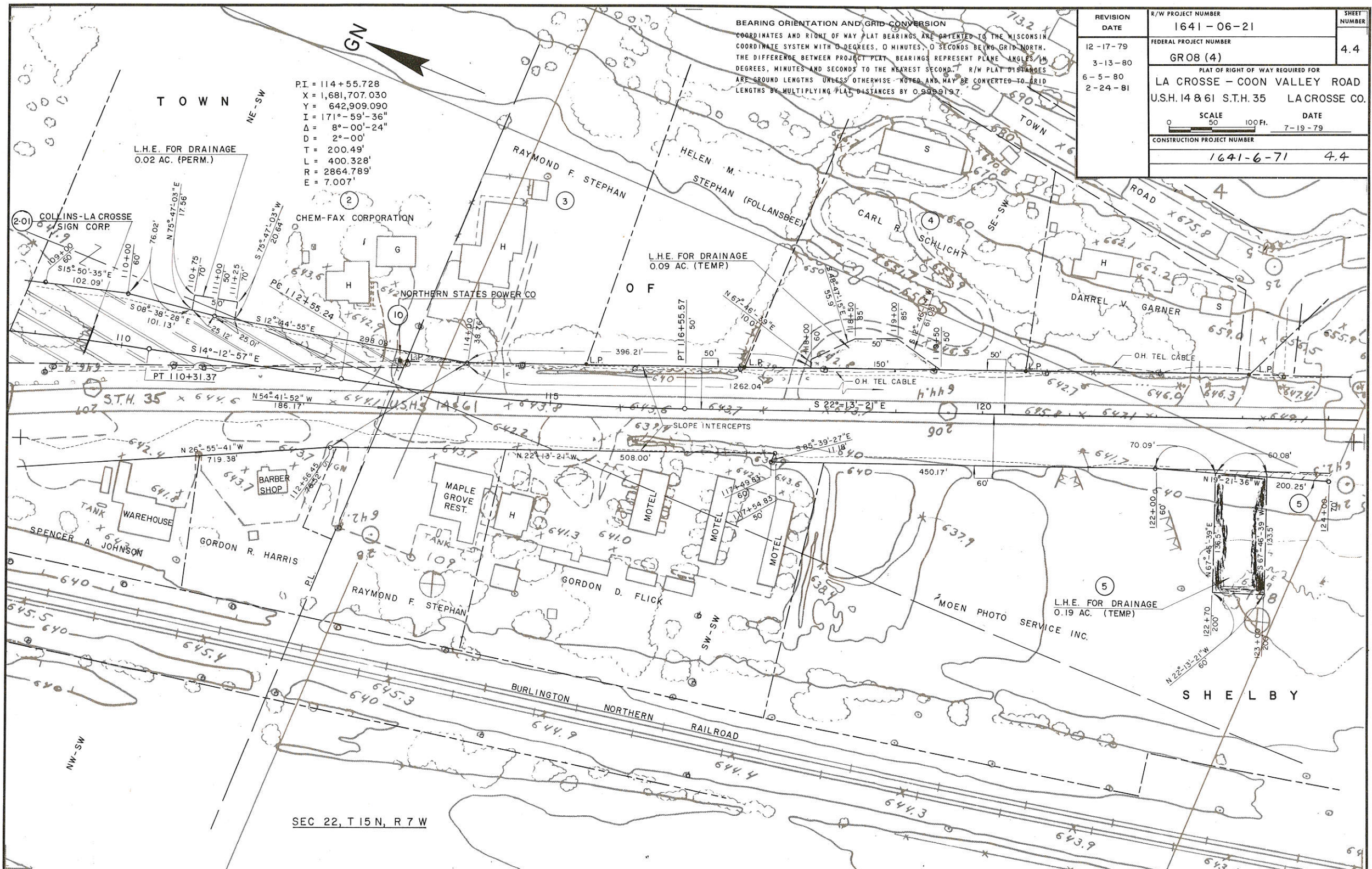
PI = 114+55.728
 X = 1,681,707.030
 Y = 642,909.090
 I = 171°-59'-36"
 Δ = 8°-00'-24"
 D = 2°-00"
 T = 200.49'
 L = 400.328'
 R = 2864.789'
 E = 7.007'

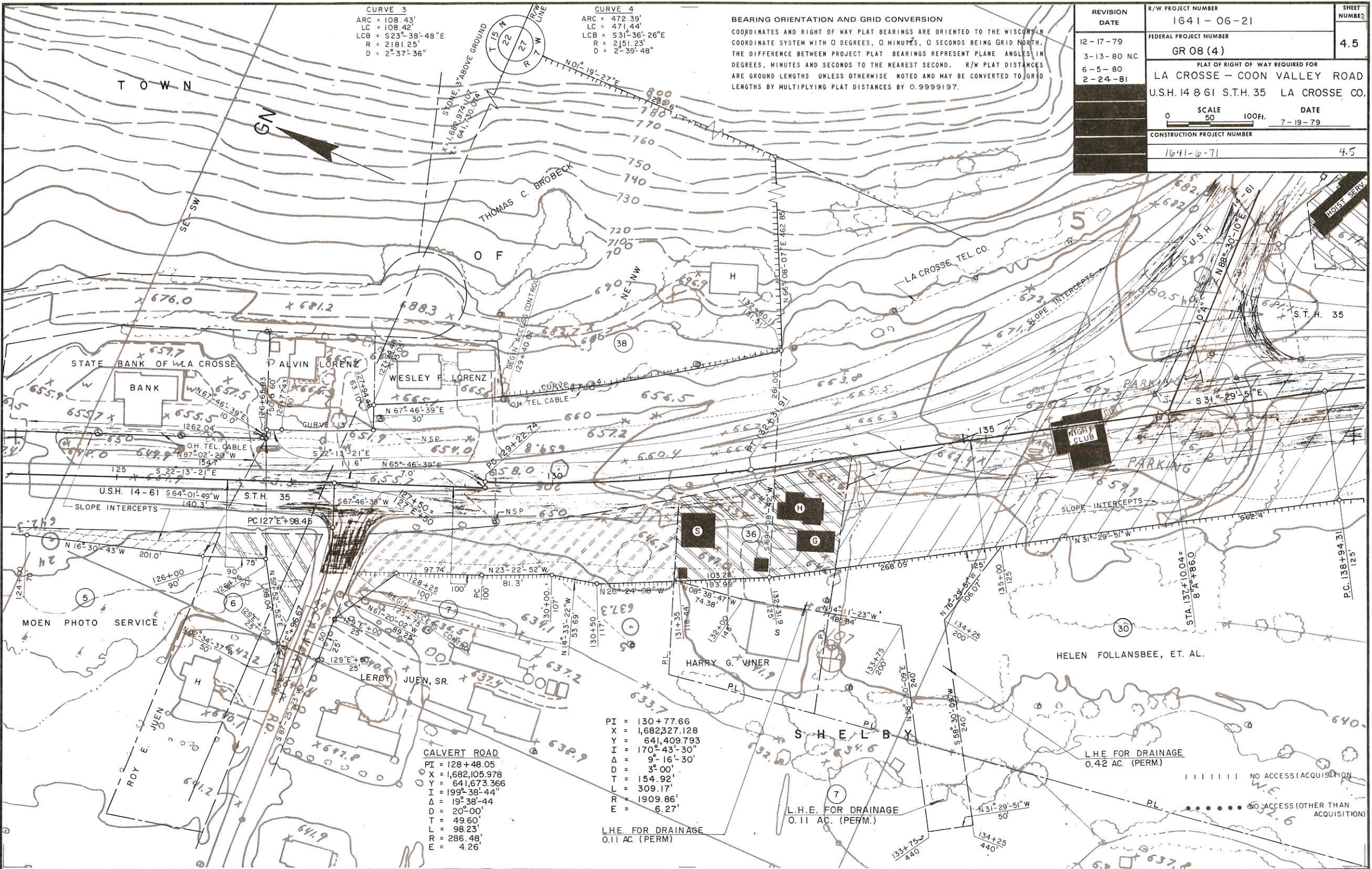
L.H.E. FOR DRAINAGE
 0.02 AC. (PERM.)

L.H.E. FOR DRAINAGE
 0.09 AC. (TEMP)

L.H.E. FOR DRAINAGE
 0.19 AC. (TEMP)

SEC 22, T 15 N, R 7 W





CURVE 3
 ARC = 108.43'
 LC = 108.42'
 LCB = S23°-38'-48"E
 R = 2181.25'
 D = 2°-37'-36"

CURVE 4
 ARC = 472.39'
 LC = 471.44'
 LCB = S31°-36'-26"E
 R = 2151.23'
 D = 2°-39'-48"

BEARING ORIENTATION AND GRID CONVERSION
 COORDINATES AND RIGHT OF WAY PLAT BEARINGS ARE ORIENTED TO THE WISCONSIN COORDINATE SYSTEM WITH 0 DEGREES, 0 MINUTES, 0 SECONDS BEING GRID NORTH. THE DIFFERENCE BETWEEN PROJECT PLAT BEARINGS REPRESENT PLANE ANGLES IN DEGREES, MINUTES AND SECONDS TO THE NEAREST SECOND. R/W PLAT DISTANCES ARE GROUND LENGTHS UNLESS OTHERWISE NOTED AND MAY BE CONVERTED TO GRID LENGTHS BY MULTIPLYING PLAT DISTANCES BY 0.99999197.

REVISION DATE	R/W PROJECT NUMBER	SHEET NUMBER
12-17-79	1641-06-21	4.5
3-13-80 NC.	FEDERAL PROJECT NUMBER	
6-5-80	GR 08 (4)	
2-24-81	PLAT OF RIGHT OF WAY REQUIRED FOR	
	LA CROSSE - COON VALLEY ROAD	
	U.S.H. 14 & 61 S.T.H. 35 LA CROSSE CO.	
	SCALE	DATE
	0 50 100 Ft.	7-19-79
	CONSTRUCTION PROJECT NUMBER	
	1641-0-71	4.5

CALVERT ROAD
 PI = 128+48.05
 X = 1,682,105.978
 Y = 641,673.366
 I = 199°-38'-44"
 Δ = 19°-38'-44"
 D = 20°-00'
 T = 49.60'
 L = 98.23'
 R = 286.48'
 E = 4.26'

PI = 130+77.66
 X = 1,682,327.128
 Y = 641,409.793
 I = 170°-43'-30"
 Δ = 9°-16'-30"
 D = 3°-00'
 T = 154.92'
 L = 309.17'
 R = 1909.86'
 E = 6.27'

L.H.E. FOR DRAINAGE
 0.11 AC. (PERM.)

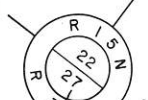
L.H.E. FOR DRAINAGE
 0.42 AC. (PERM.)

----- NO ACCESS (ACQUISITION)
 NO ACCESS (OTHER THAN ACQUISITION)

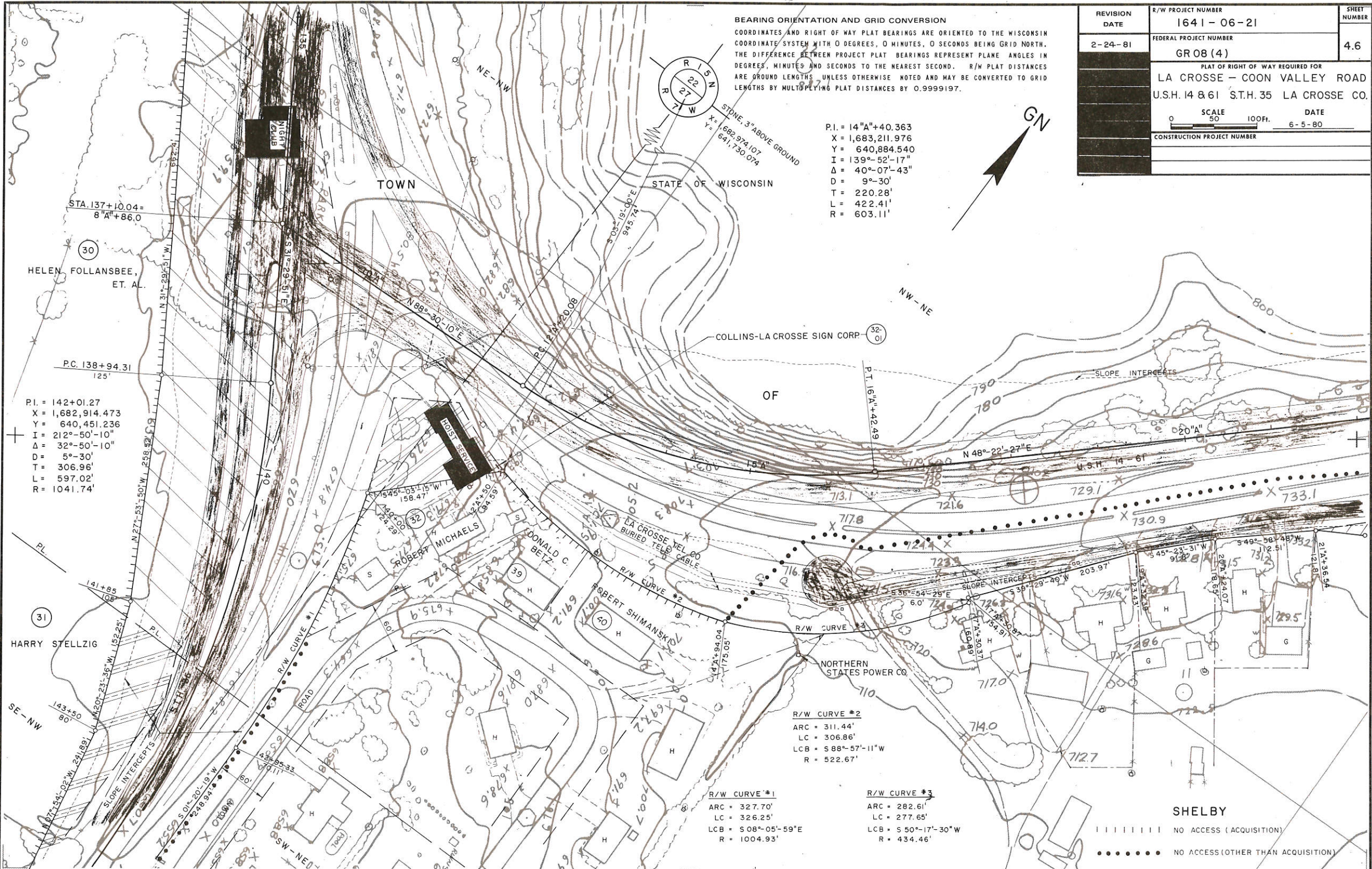
REVISION DATE	R/W PROJECT NUMBER	SHEET NUMBER
2-24-81	1641-06-21	4.6
	FEDERAL PROJECT NUMBER	
	GR 08 (4)	
PLAT OF RIGHT OF WAY REQUIRED FOR		
LA CROSSE - COON VALLEY ROAD		
U.S.H. 14 & 61 S.T.H. 35 LA CROSSE CO.		
	SCALE	DATE
	0 50 100 Ft.	6-5-80
CONSTRUCTION PROJECT NUMBER		

BEARING ORIENTATION AND GRID CONVERSION
 COORDINATES AND RIGHT OF WAY PLAT BEARINGS ARE ORIENTED TO THE WISCONSIN COORDINATE SYSTEM WITH 0 DEGREES, 0 MINUTES, 0 SECONDS BEING GRID NORTH. THE DIFFERENCE BETWEEN PROJECT PLAT BEARINGS REPRESENT PLANE ANGLES IN DEGREES, MINUTES AND SECONDS TO THE NEAREST SECOND. R/W PLAT DISTANCES ARE GROUND LENGTHS UNLESS OTHERWISE NOTED AND MAY BE CONVERTED TO GRID LENGTHS BY MULTIPLYING PLAT DISTANCES BY 0.9999197.

P.I. = 14" A + 40.363
 X = 1,683,211.976
 Y = 640,884.540
 I = 139°-52'-17"
 Δ = 40°-07'-43"
 D = 9°-30'
 T = 220.28'
 L = 422.41'
 R = 603.11'



STONE 3" ABOVE GROUND
 X = 1,682,974.107
 Y = 641,730.074



STA. 137+10.04 =
 8" A + 86.0

HELEN FOLLANSBEE,
 ET. AL.

P.C. 138+94.31
 125'

P.I. = 142+01.27
 X = 1,682,914.473
 Y = 640,451.236
 I = 212°-50'-10"
 Δ = 32°-50'-10"
 D = 5°-30'
 T = 306.96'
 L = 597.02'
 R = 1041.74'

HARRY STELLZIG

POST SERVICE

R/W CURVE #2
 ARC = 311.44'
 LC = 306.86'
 LCB = S 88°-57'-11" W
 R = 522.67'

R/W CURVE #1
 ARC = 327.70'
 LC = 326.25'
 LCB = S 08°-05'-59" E
 R = 1004.93'

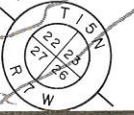
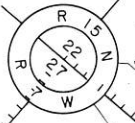
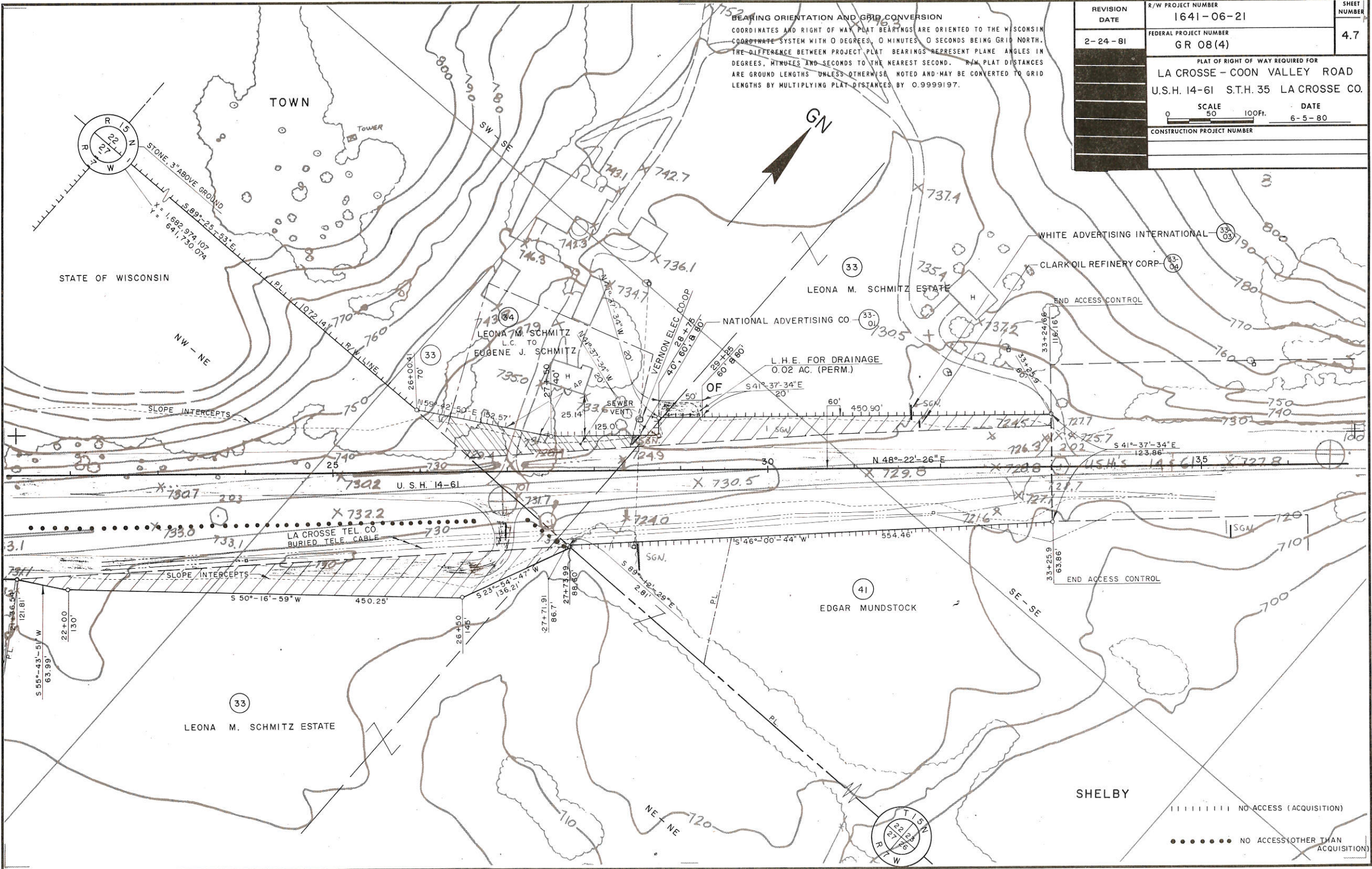
R/W CURVE #3
 ARC = 282.61'
 LC = 277.65'
 LCB = S 50°-17'-30" W
 R = 434.46'

SHELBY

NO ACCESS (ACQUISITION)
 NO ACCESS (OTHER THAN ACQUISITION)

REVISION DATE	R/W PROJECT NUMBER	SHEET NUMBER
2-24-81	1641-06-21	4.7
FEDERAL PROJECT NUMBER		
GR 08 (4)		
PLAT OF RIGHT OF WAY REQUIRED FOR		
LA CROSSE - COON VALLEY ROAD		
U.S.H. 14-61 S.T.H. 35 LA CROSSE CO.		
SCALE		DATE
0 50 100 FT.		6-5-80
CONSTRUCTION PROJECT NUMBER		

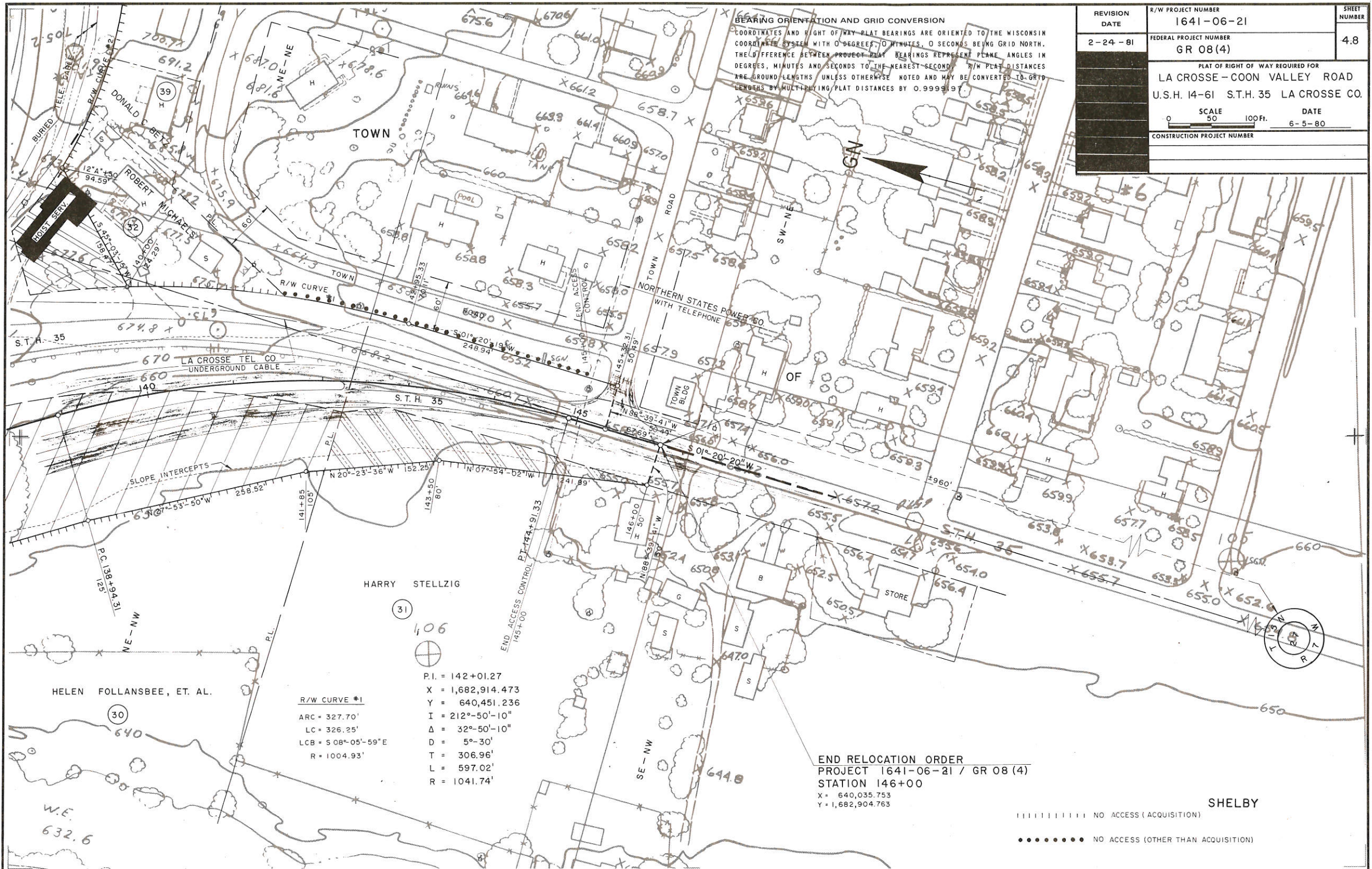
BEARING ORIENTATION AND GRID CONVERSION
 COORDINATES AND RIGHT OF WAY PLAT BEARINGS ARE ORIENTED TO THE WISCONSIN
 COORDINATE SYSTEM WITH 0 DEGREES, 0 MINUTES, 0 SECONDS BEING GRID NORTH.
 THE DIFFERENCE BETWEEN PROJECT PLAT BEARINGS REPRESENT PLANE ANGLES IN
 DEGREES, MINUTES AND SECONDS TO THE NEAREST SECOND. R/W PLAT DISTANCES
 ARE GROUND LENGTHS UNLESS OTHERWISE NOTED AND MAY BE CONVERTED TO GRID
 LENGTHS BY MULTIPLYING PLAT DISTANCES BY 0.9999197.



||||| NO ACCESS (ACQUISITION)
 ●●●●● NO ACCESS (OTHER THAN ACQUISITION)

REVISION DATE	R/W PROJECT NUMBER	SHEET NUMBER
2-24-81	1641-06-21	4.8
FEDERAL PROJECT NUMBER		
GR 08(4)		
PLAT OF RIGHT OF WAY REQUIRED FOR		
LA CROSSE-COON VALLEY ROAD		
U.S.H. 14-61 S.T.H. 35 LA CROSSE CO.		
SCALE		DATE
0 50 100 FT.		6-5-80
CONSTRUCTION PROJECT NUMBER		

BEARING ORIENTATION AND GRID CONVERSION
 COORDINATES AND RIGHT OF WAY PLAT BEARINGS ARE ORIENTED TO THE WISCONSIN COORDINATE SYSTEM WITH 0 DEGREES, 0 MINUTES, 0 SECONDS BEING GRID NORTH. THE DIFFERENCE BETWEEN PROJECT PLAT BEARINGS REPRESENT PLANE ANGLES IN DEGREES, MINUTES AND SECONDS TO THE NEAREST SECOND. R/W PLAT DISTANCES ARE GROUND LENGTHS UNLESS OTHERWISE NOTED AND MAY BE CONVERTED TO GRID LENGTHS BY MULTIPLYING PLAT DISTANCES BY 0.9999197.



R/W CURVE #1
 ARC = 327.70'
 LC = 326.25'
 LCB = S 08° 05' 59" E
 R = 1004.93'

P.I. = 142+01.27
 X = 1,682,914.473
 Y = 640,451.236
 I = 212°-50'-10"
 Δ = 32°-50'-10"
 D = 5°-30"
 T = 306.96'
 L = 597.02'
 R = 1041.74'

END RELOCATION ORDER
 PROJECT 1641-06-21 / GR 08(4)
 STATION 146+00
 X = 640,035.753
 Y = 1,682,904.763

||||| NO ACCESS (ACQUISITION)
 ●●●●● NO ACCESS (OTHER THAN ACQUISITION)

SHELBY

271