

32

Index of Sheets

Sheet No.	1	Title
Sheet No.	3	Typical Sections and Details
Sheet No.	3	Estimate of Quantities
Sheet No.	B-8.7	Miscellaneous Quantities
Sheet No.	-	Right of Way Plat
Sheet No.	3	Plan
Sheet No.	-	Standard Detail Drawings
Sheet No.	-	Standard Sign Plates
Sheet No.	B-8.7	Structure Plans
Sheet No.	-	Computer Earthwork Data
Sheet No.	-	Cross Sections

TOTAL SHEETS = 10



STATE OF WISCONSIN DEPARTMENT OF TRANSPORTATION

PLAN OF PROPOSED IMPROVEMENT

LA CROSSE - TOMAH ROAD

LA CROSSE COUNTY

I.H. 90

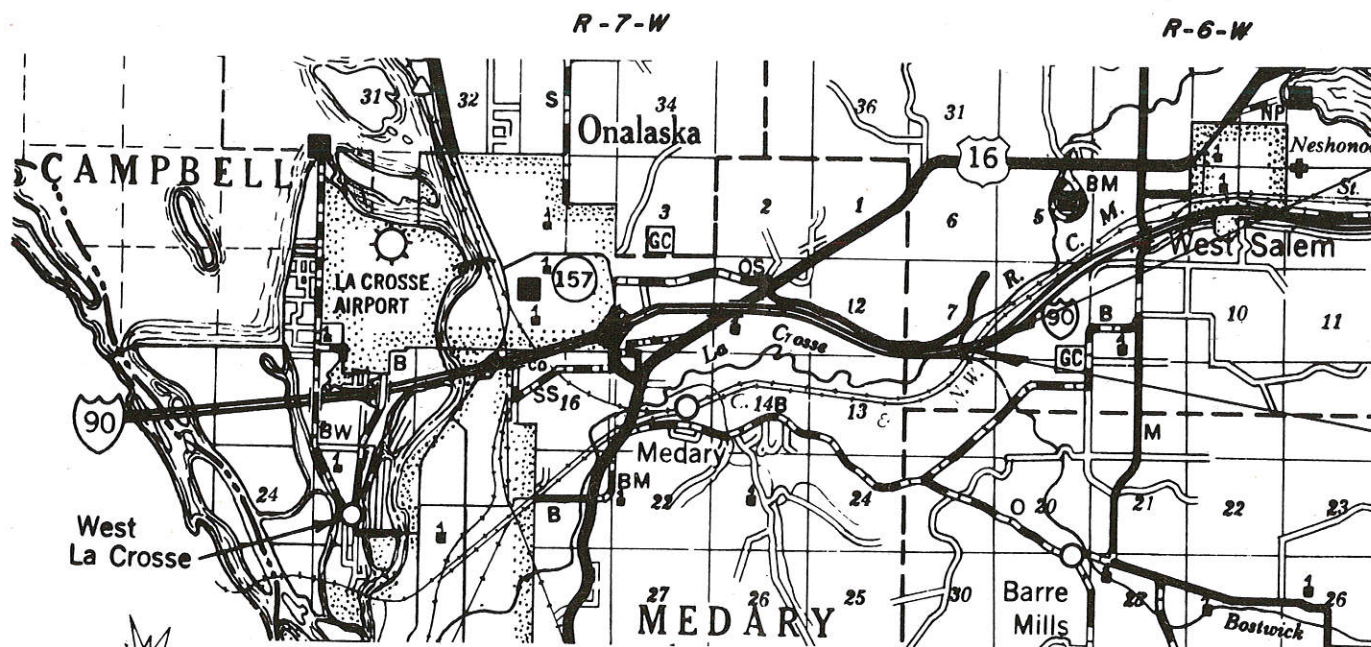
(BRIDGE DECK OVERLAYS B-32-23, 24, 25 & 26)

STATE PROJECT	FEDERAL PROJECT	
	PROJECT	CONTRACT
1070-2-83	I-IR 90-I(73)8	I

STATE PROJECT NUMBER
1070-2-83

Scales

LA CROSSE COUNTY



STRUCTURES
B-32-25 & B-32-26

STRUCTURES
B-32-23 & B-32-24

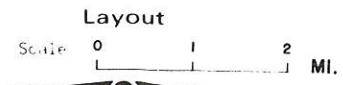


Design Designation

A.D.T.	1980 = 9,300
A.D.T.	2000 = 16,000
D.M.V.	= 1,920
D.	= 60-40
T.	= 10.2%
V.	= 55

Conventional Signs

County Line	-----	Caution Symbol (Combustible fluids under pressure)	
Township or Range Line	-----	Railroads	
Section Line	-----	Fence	
Corporate or City Limits	-----	Culverts in Place	
Property line	-----	Culverts Required	
Lot Line	-----	Power Pole	
Existing Right of Way Line	-----	Telephone or Telegraph Pole	
New Right of Way Line	-----	Right of Way Markers	
Base or Survey Line	-----	Marsh	
Slope Intercept	-----	Wooded Area	
Existing Roadway or Private Entrance	-----	Grade Elevation	



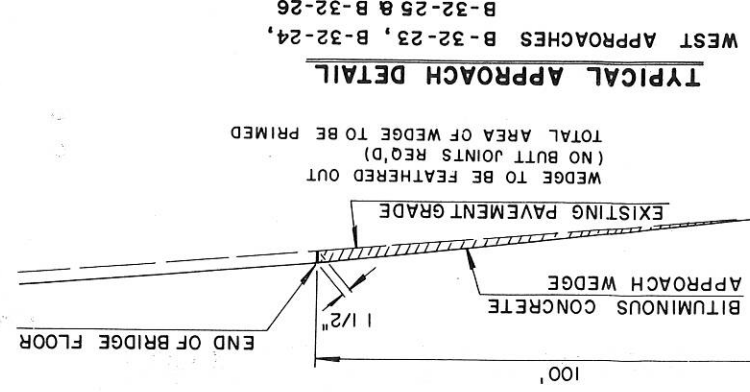
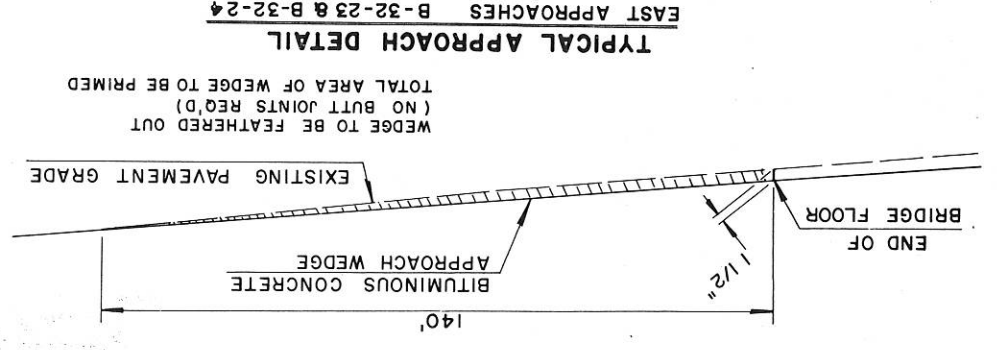
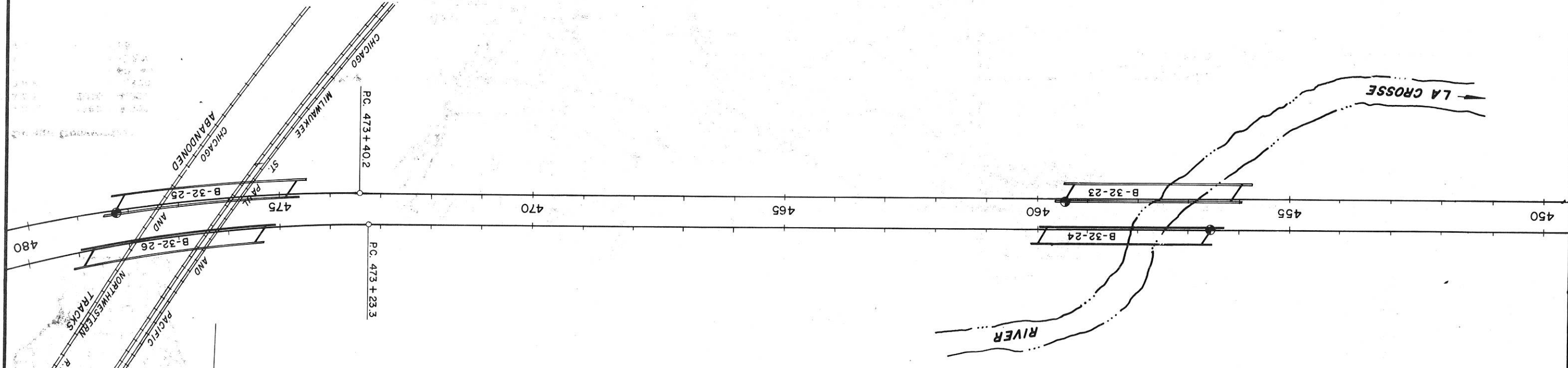
Layout
Scale 0 1 2 MI.
Total Net Length of Centerline 0.00 MI.

STATE OF WISCONSIN DEPARTMENT OF TRANSPORTATION	
M.E.W.	<i>Rlo</i>
Designer C.G.L.	<i>EJL</i>
Director of Surveying R.V.R.	<i>EJL</i>
Approved	
Date 9-27-79	<i>TR Kusay</i> District Transportation
Approved	
Date 11/12/79	<i>D. J. Strand</i> Chief Design Engineer
Approved	
Date 11/13/79	<i>E. J. Byrkit</i> District Development
U.S. DEPARTMENT OF TRANSPORTATION FEDERAL HIGHWAY ADMINISTRATION REGION 5 WISCONSIN DIVISION	
Approved	
Date	

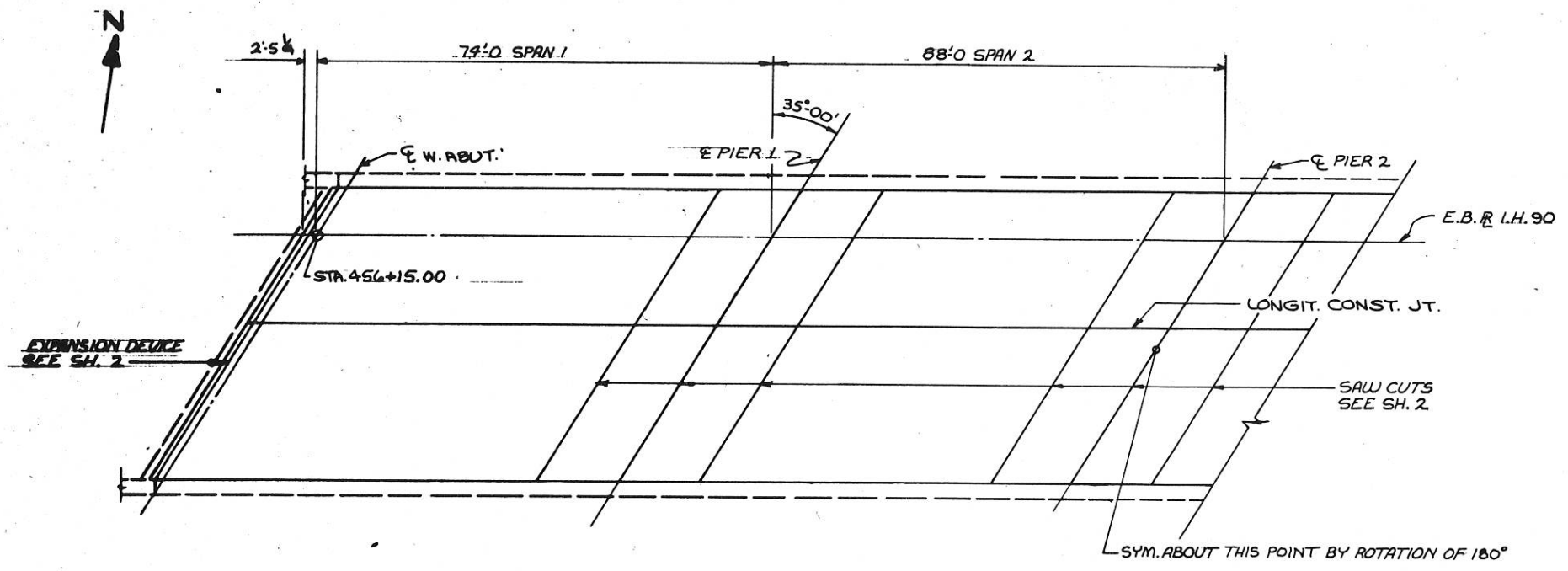
ESTIMATE OF QUANTITIES
BRIDGE DECK OVERLAYS

STATION TO STATION	NET LENGTH OF CENTER LINE	ITEM NO.	UNIT	LIN FT.	L.S.	L.S.	L.S.	L.S.	L.S.	S.Y.	S.Y.	S.Y.	S.Y.	S.Y.	S.Y.	TOTALS
B-32-23	0.25	64201	L.S.	61910												1
B-32-24	0.25	90001	C.Y.													346
B-32-25	0.25	90002	S.Y.													920
B-32-26	0.25	90003	S.Y.													5937
																92
																1
																1
																1
																1
																100
																250

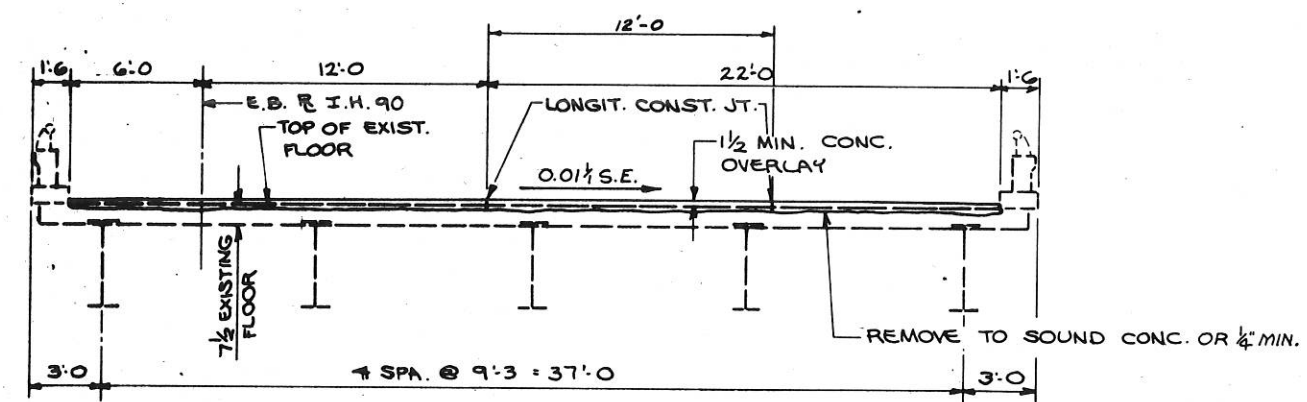
BENCH MARKS
 B-32-23 : KIEL □ N.E. CORN. BRI. CURB E.B. ELEV. 682.69
 B-32-24 : KIEL □ S.W. CORN. BRI. CURB W.B. ELEV. 681.44
 B-32-25 : KIEL □ N.E. CORN. BRI. CURB E.B. ELEV. 702.96



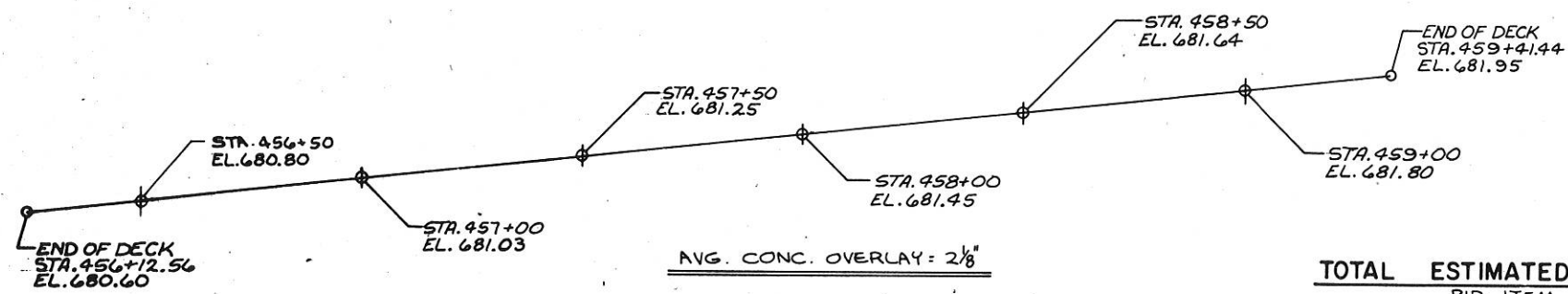
R1 - 3/5/80



PLAN



CROSS SECTION THRU ROADWAY
(LOOKING EAST)

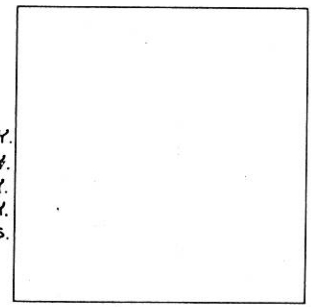


PROFILE

NOTE:
STATIONS & ELEVATIONS GIVEN IN PROFILE ARE ALONG
R. I.H. 90 E.B.L. AT TOP OF OVERLAY.

TOTAL ESTIMATED QUANTITIES

BID ITEM	Quantity	Unit
CONCRETE MASONRY OVERLAY	92	C.Y.
DECK PREPARATION	54	S.Y.
DECK CLEANING	1,462	S.Y.
JOINT REPAIR	22	S.Y.
EXPANSION DEVICES	1	L.S.



LAYOUT

DESIGN DATA

LIVE LOAD:
DESIGN RATING — HS 20 MOD.
INVENTORY RATING — H 19
OPERATIONAL RATING — HS 28

LIST OF DRAWINGS

- 1. CONC. DECK OVERLAY — X 63573
- 2. JOINT DETAILS — X 63574

No.	Date	Revision	By
STATE OF WISCONSIN DEPARTMENT OF TRANSPORTATION DIVISION OF HIGHWAYS			
STRUCTURE B-32-23			
E.B.L. I.H. 90 OVER LA CROSSE RIVER			
County	LA CROSSE	Town/Village	HAMILTON
Design Spec.	A.A.S.H.T.O. '78	Load Spec.	HS 20 MOD.
Designed By	C. RAY	Checked	FO'M
Drawn By	LOY	Checked	J.C.V.
Approved	W.A. Klein Chief Bridge Engineer		11-5-79 Date
CONC. DECK OVERLAY			SHEET 1 OF 2 X63573

LEGEND

- ① ELASTOMERIC EXPANSION DEVICE, FEL-SPAN MODEL T 30 SA OR WABO ELASTO DAM 300S.
- ② BAR $2\frac{1}{2} \times \frac{3}{8}$, BUILD TO CONFORM TO RDWY. CROWN.
- ③ BAR $3\frac{1}{4} \times \frac{3}{8}$, WELD TO NO. 2 AS SHOWN.
- ④ THREADED STUDS PROVIDED BY MANUF. WELD TO NO. 3. EXIST. PORTION OF WTG. $\times 39.5$.
- ⑤ L $3 \times 2\frac{1}{2} \times \frac{3}{8}$ - 3 LONG, PLACE AT 3:0 CTRS. WELD TO NO. 3. PROVIDE $1\frac{1}{2}$ HOLE IN $2\frac{1}{2}$ LEG FOR NO. 6.
- ⑥ $\frac{3}{4}$ ROD WITH 2 STD. NUTS & WASHERS, THREAD 4. FIELD DRILLED & GROUTED.
- ⑦ L $2\frac{1}{2} \times 2 \times \frac{5}{16}$ - CUT 2' LEG TO $1\frac{1}{8}$ - WELD $1\frac{1}{8}$ LEG TO EXIST. WTG. $\times 39.5$ (AS SHOWN).
- ⑧ $\frac{3}{4}$ THREADED ROD WITH 2 STD. NUTS & WASHERS, FIELD WELD TO GIRDER FLANGE AS SHOWN, MAY BE ATTACHED BY BRG. STIFF. BY $1\frac{1}{2}$ MIN.
- ⑨ L $3 \times 2\frac{1}{2} \times \frac{3}{8}$ - 3 LONG, PLACE MID-WAY BTWN. GIRDERS. WELD TO NO. 3. PROVIDE $\frac{5}{8}$ HOLE IN $2\frac{1}{2}$ LEG FOR NO. 10.
- ⑩ $\frac{3}{4}$ ROD, THREAD 4, TACK WELD NUT TO NO. 4.
- ⑪ $\frac{1}{2}$ ϕ \times 0.6 STUDS, PLACE AT 6 ALT. CTRS. BEND AFTER WELDING TO NO. 2 & NO. 3.
- ⑫ THREE ALTERNATES:
 (A) INSTALL NEOPRENE COMPRESSION SEAL (ACME M-044 OR APPROVED EQUAL) RECESS $\frac{1}{8}$ SEAL TO EXTEND FULL WIDTH OF RDWY. PLUS EACH CURB. NO SPLICE PERMITTED.
 (B) FILL OPENING WITH HOT POURED ELASTIC TYPE JOINT SEALER, HOLD $\frac{1}{8}$ BELOW SURFACE OF CONC.
 (C) FILL OPENING WITH COLD APPLIED ELASTIC TYPE JOINT SEALER, HOLD $\frac{1}{8}$ BELOW SURFACE OF CONC.

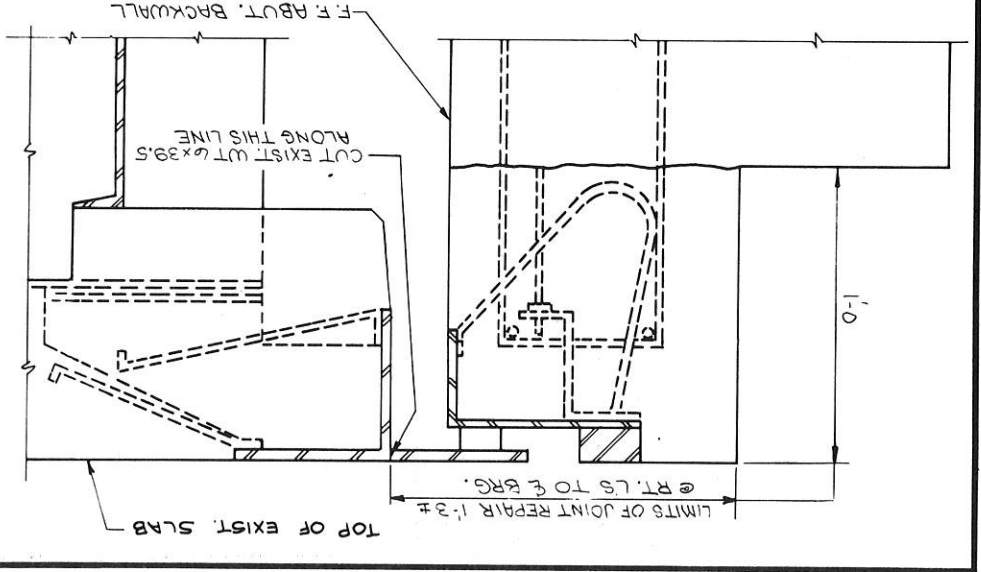
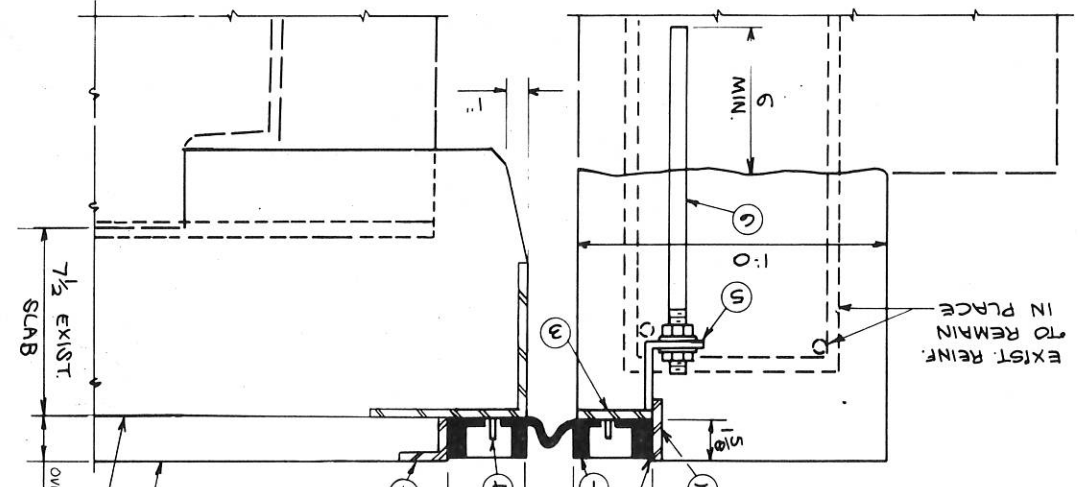
GENERAL NOTES:

ELASTOMERIC JOINT ASSEMBLY, INCLUDING ANCHORAGE ARMOR & HARDWARE WILL BE PAID FOR AT THE LUMP SUM PRICE FOR 'EXPANSION DEVICE'.
 APPLY SEALANT ALONG BOTTOM & SIDES OF TROUGH AS DEVICE. TROUGH MUST BE FREE OF ALL DEBRIS.
 EACH STUD NO. 4 SHALL HAVE A WASHER & HEX. NUT OR TORQUE NUT TIGHTEN ALL NUTS TO MANUFACTURER'S RECOMMENDED TORQUE.
 CLEAN BOLT HOLE CAVITY & FILL CAVITY DEPTH WITH SEALANT AND/OR BOLT HOLE PLUG. CLEAN EXCESS SEALANT FROM SURFACE.
 COST OF ITEM ⑨ IN LEGEND TO BE CONSIDERED INCIDENTAL TO 'CONC. MASONRY OVERLAY'.
 DETAILS OF FIELD SPLICE IN DEVICE SHALL BE SUBMITTED FOR APPROVAL.

ANCHORAGE DETAILS

STATE OF WISCONSIN DEPARTMENT OF TRANSPORTATION		STRUCTURE B-32-23		1975		Drawn BY LOY		Checked J.C.K.		SHEET 2 OF 2		X 63574	
No.	Date	Revision	By										

TOP OF OVERLAY
 TOP OF EXIST. SLAB
 RECESS $\frac{1}{8}$ MAX.
 SEE 'TEMP. TABLE'
 @ RT. L.S. TO ϕ BRG.

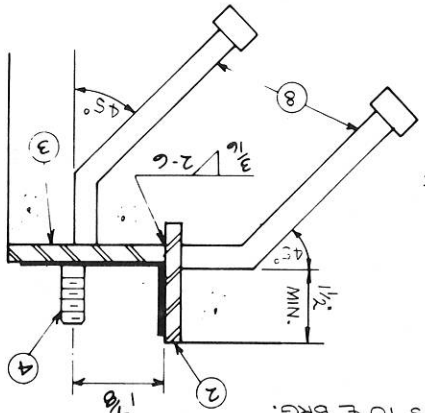


TEMPERATURE TABLE

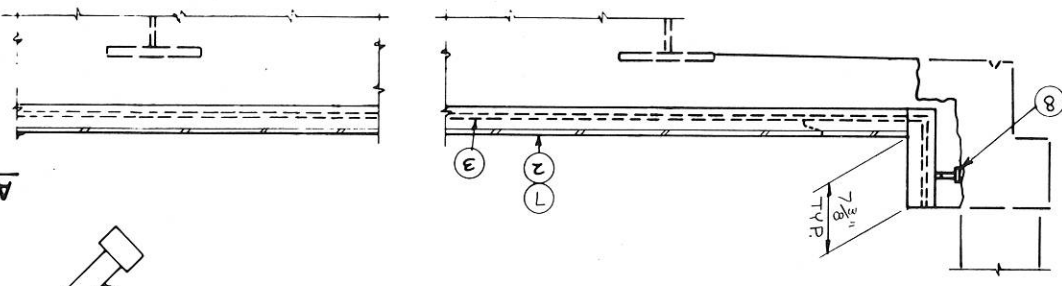
TEMP. JT. OPENING	1	$1\frac{1}{4}$	$1\frac{1}{2}$	$1\frac{3}{8}$	$1\frac{1}{2}$	$1\frac{3}{8}$	$1\frac{1}{2}$	$1\frac{3}{8}$	$1\frac{1}{2}$
90°	1	$1\frac{1}{4}$	$1\frac{1}{2}$	$1\frac{3}{8}$	$1\frac{1}{2}$	$1\frac{3}{8}$	$1\frac{1}{2}$	$1\frac{3}{8}$	$1\frac{1}{2}$
80°	$1\frac{1}{4}$	$1\frac{1}{2}$	$1\frac{3}{8}$	$1\frac{1}{2}$	$1\frac{3}{8}$	$1\frac{1}{2}$	$1\frac{3}{8}$	$1\frac{1}{2}$	$1\frac{3}{8}$
70°	$1\frac{1}{4}$	$1\frac{1}{2}$	$1\frac{3}{8}$	$1\frac{1}{2}$	$1\frac{3}{8}$	$1\frac{1}{2}$	$1\frac{3}{8}$	$1\frac{1}{2}$	$1\frac{3}{8}$
60°	$1\frac{1}{4}$	$1\frac{1}{2}$	$1\frac{3}{8}$	$1\frac{1}{2}$	$1\frac{3}{8}$	$1\frac{1}{2}$	$1\frac{3}{8}$	$1\frac{1}{2}$	$1\frac{3}{8}$
50°	$1\frac{1}{2}$	$1\frac{3}{8}$	$1\frac{1}{2}$	$1\frac{3}{8}$	$1\frac{1}{2}$	$1\frac{3}{8}$	$1\frac{1}{2}$	$1\frac{3}{8}$	$1\frac{1}{2}$
40°	$1\frac{3}{8}$	$1\frac{1}{2}$	$1\frac{3}{8}$	$1\frac{1}{2}$	$1\frac{3}{8}$	$1\frac{1}{2}$	$1\frac{3}{8}$	$1\frac{1}{2}$	$1\frac{3}{8}$
30°	$1\frac{3}{8}$	$1\frac{1}{2}$	$1\frac{3}{8}$	$1\frac{1}{2}$	$1\frac{3}{8}$	$1\frac{1}{2}$	$1\frac{3}{8}$	$1\frac{1}{2}$	$1\frac{3}{8}$

(FOR FEL-SPAN MODEL T-30SA OR WABO ELASTO DAM MODEL 300S)
 * SHADED UNDERSIDE
 DECK TEMP. (F.)

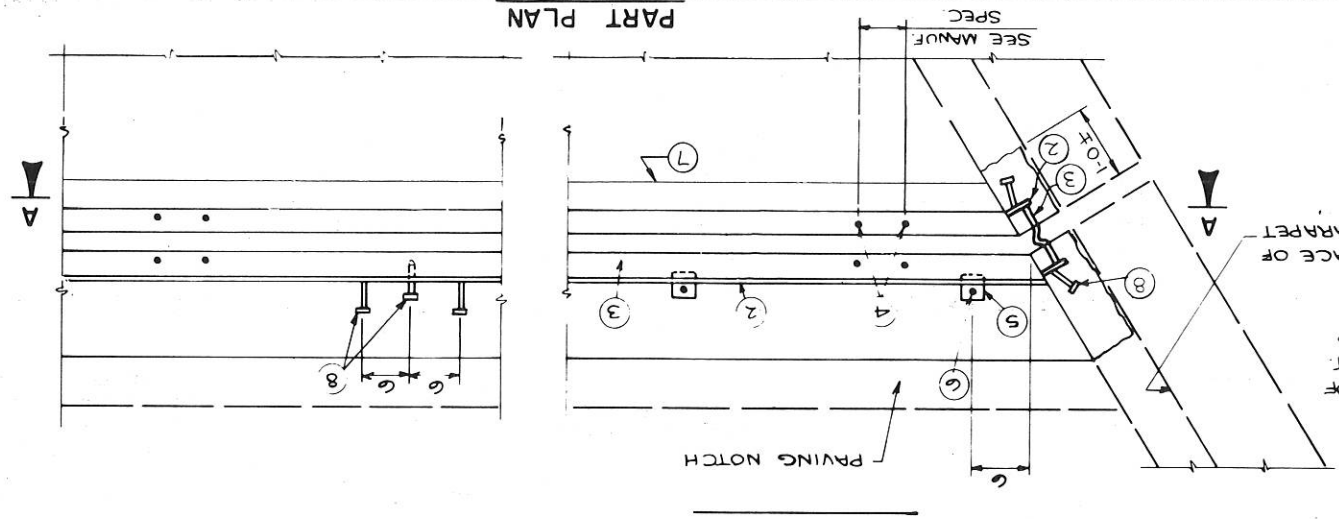
SECTION THRU NEW JOINT AT ABUTS.
 @ RT. L.S. TO ϕ BRG.



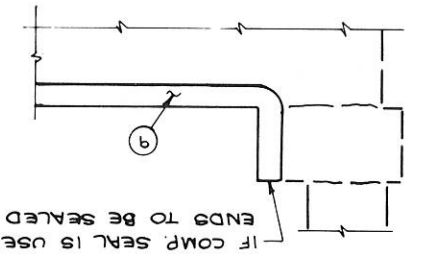
ANCHORAGE DETAILS



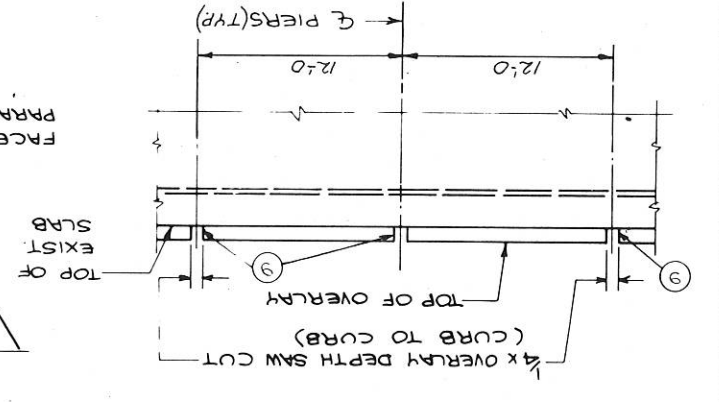
SECTION A



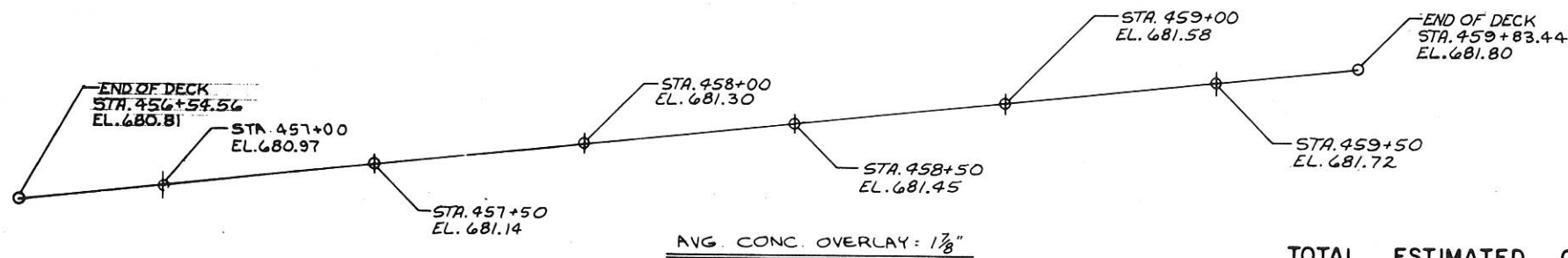
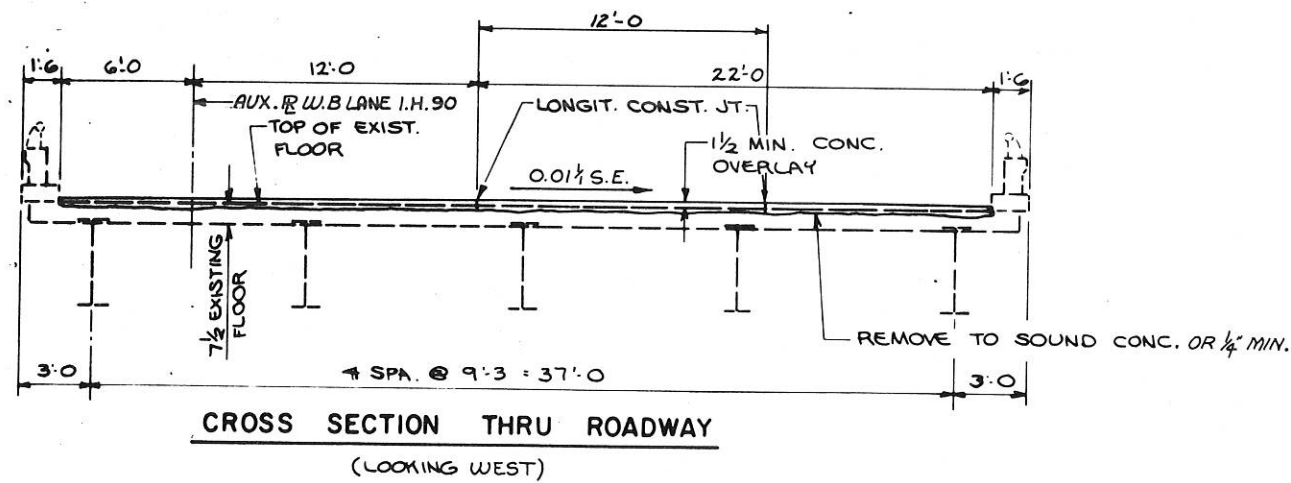
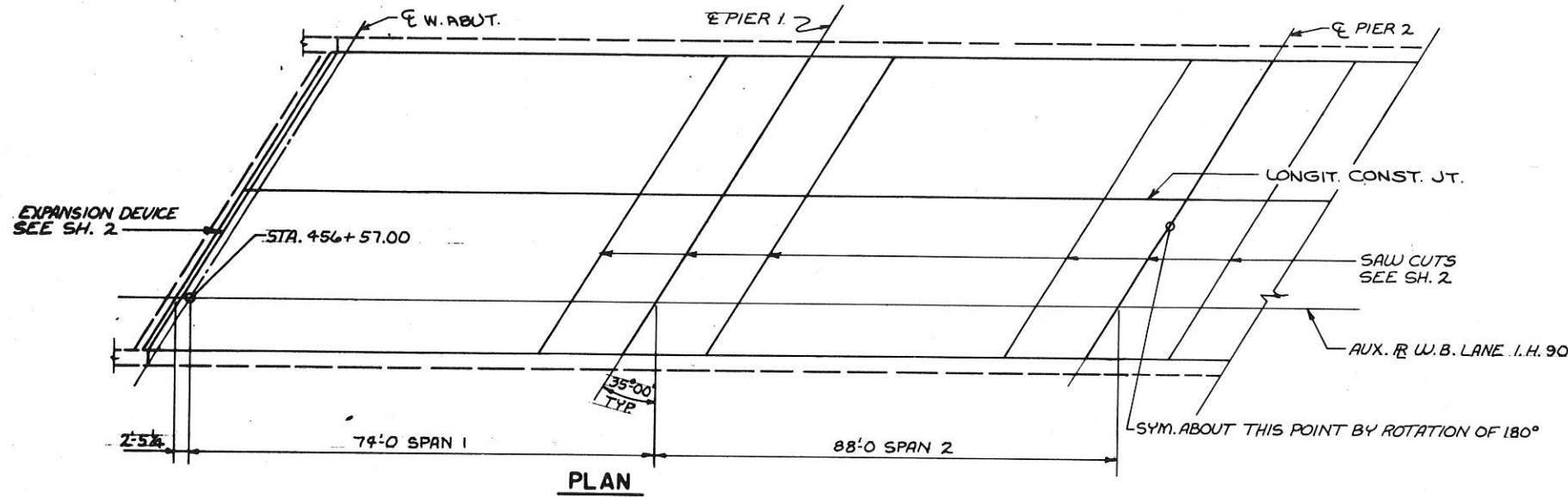
DETAIL AT CURB
 SAW CUTS AT PIERS



SECTION AT PIER SAW CUTS



R1-3/5/80

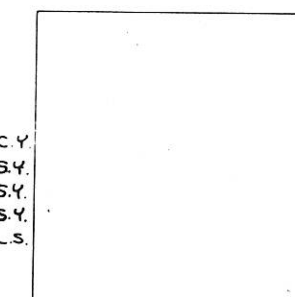


NOTE:
STATIONS & ELEVATIONS GIVEN IN PROFILE ARE ALONG
AUX. R. I.H. 90 W.B.L. AT TOP OF OVERLAY.

BENCH MARK: KEIL □ S.W. COR. BRIDGE CURB EL. 681.44

TOTAL ESTIMATED QUANTITIES

BID ITEM	QUANTITY	UNIT
CONCRETE MASONRY OVERLAY	82	C.Y.
DECK PREPARATION	171	S.Y.
DECK CLEANING	1942	S.Y.
JOINT REPAIR	22	S.Y.
EXPANSION DEVICES	1	L.S.



DESIGN DATA

LIVE LOAD:
DESIGN RATING — HS 20 MOD.
INVENTORY RATING — H 19
OPERATIONAL RATING — HS 28

LIST OF DRAWINGS

- 1. CONC. DECK OVERLAY — X 63590
- 2. JOINT DETAILS — X 63591

No.	Date	Revision	By
STATE OF WISCONSIN DEPARTMENT OF TRANSPORTATION DIVISION OF HIGHWAYS			
STRUCTURE B-32-24			
W.B.L. I.H. 90 OVER LA CROSSE RIVER			
County	LA CROSSE	Town/City/Village	HAMILTON
Design Spec.	A.A.S.H.T.O. '78	Load	HS 20 MOD.
Designed By	C. RAY	Checked	FO'M
Drawn By	LOY	Plans Checked	J.C.K.
Approved	W.A. Kline		11-5-79
	Chief Bridge Engineer		Date
CONC. DECK OVERLAY			SHEET 1 OF 2
X63590			

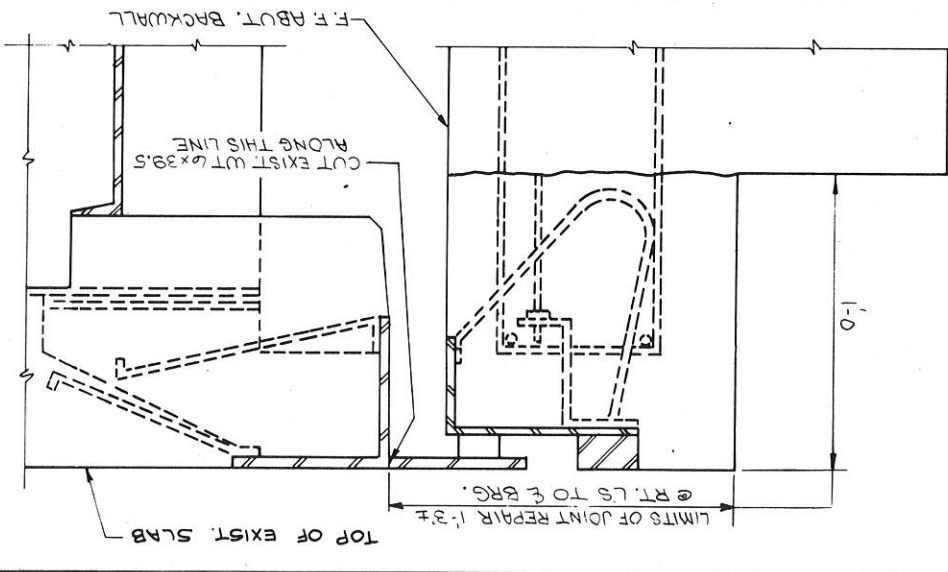
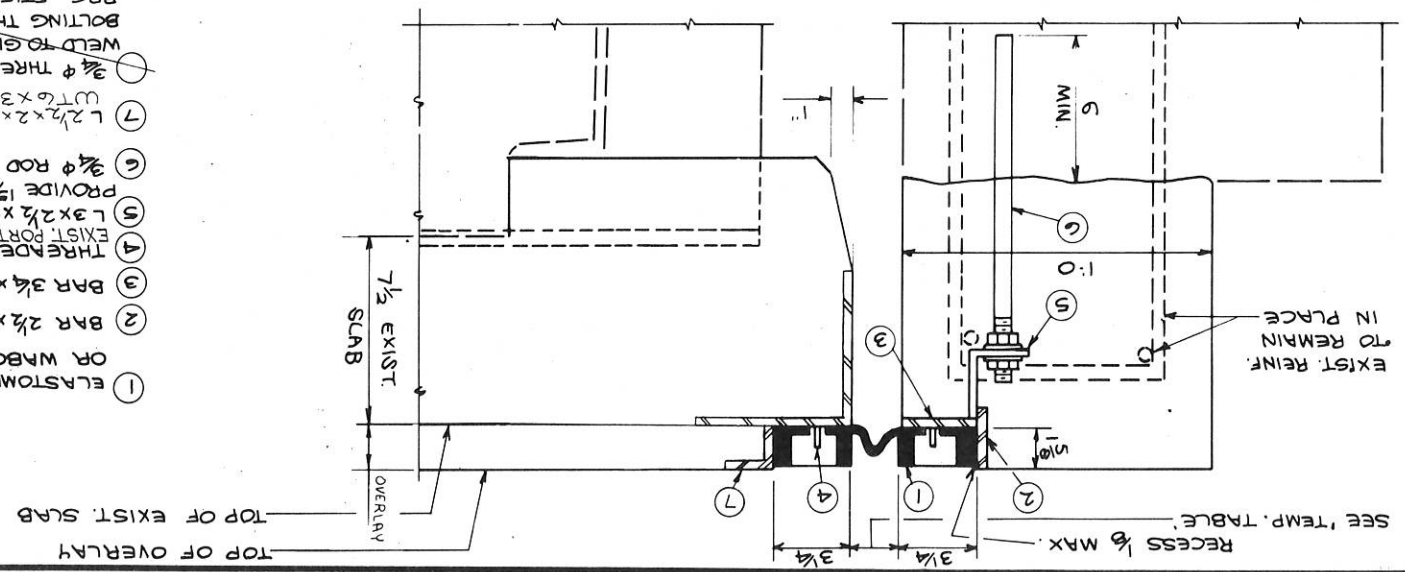
LEGEND

- 1 ELASTOMERIC EXPANSION DEVICE, FEL-SPAN MODEL T 30 SA OR WABO ELASTO DAM 300S.
- 2 BAR $2\frac{1}{2} \times \frac{3}{8}$ BUILD TO CONFORM TO RDWY. CROWN.
- 3 BAR $3\frac{1}{4} \times \frac{3}{8}$ WELD TO NO. 2 AS SHOWN.
- 4 THREADED STUDS PROVIDED BY MANUF. WELD TO NO. 3. & EXIST. PORTION OF WT.6 X 39.5.
- 5 L 3 X $2\frac{1}{2} \times \frac{3}{8}$ - 3 LONG. PLACE AT 3:0 CTRS. WELD TO NO. 3. PROVIDE $1\frac{1}{2}$ " HOLE IN 2 $\frac{1}{2}$ " LEG FOR NO. 6.
- 6 $\frac{3}{4}$ " ROD WITH 2 STD. NUTS & WASHERS, THREAD 4. FIELD DRILLED & GROUTED.
- 7 L 2 $\frac{1}{2} \times 2 \times \frac{5}{16}$ - CUT 2" LEG TO 1 $\frac{1}{8}$ " - WELD 1 $\frac{1}{8}$ " LEG TO EXIST. WT.6 X 39.5 (AS SHOWN).
- 8 $\frac{3}{4}$ " THREADED ROD WITH 2 STD. NUTS & WASHERS. FIELD WELD TO GIRDER FLANGE AS SHOWN. MAY BE ATTACHED BY BOLTING THRU FLANGE. IF BOLTED, BOLTS SHALL CLEAR BRG. STIFF. BY 1 $\frac{1}{2}$ " MIN.
- 9 L 3 X $2\frac{1}{2} \times \frac{3}{8}$ - 3 LONG. PLACE MID-WAY BTWN. GIRDERS. WELD TO NO. 3. PROVIDE $\frac{1}{2}$ " HOLE IN 2 $\frac{1}{2}$ " LEG FOR NO. 10.
- 10 $\frac{3}{4}$ " ROD. THREAD 4. TRCK WELD NUT TO NO. 9.
- 11 $\frac{1}{2}$ " X 0-6 STUDS. PLACE AT 6 ALT. CTRS. BEND AFTER WELDING TO NO. 2 & NO. 3.
- 12 THREE ALTERNATES:
 (A) INSTALL NEOPRENE COMPRESSION SEAL (ACME M-044 OR APPROVED EQUAL) RECESS $\frac{1}{8}$ " SEAL TO EXTEND FULL WIDTH OF RDWY. PLUS EACH CURB. NO SPLICE PERMITTED.
 (B) FILL OPENING WITH HOT FUSED ELASTIC TYPE JOINT SEALER. HOLD $\frac{1}{8}$ " BELOW SURFACE OF CONC.
 (C) FILL OPENING WITH COLD APPLIED ELASTIC TYPE JOINT SEALER. HOLD $\frac{1}{8}$ " BELOW SURFACE OF CONC.

GENERAL NOTES

ELASTOMERIC JOINT ASSEMBLY, INCLUDING ANCHORAGE ARMOR & HARDWARE WILL BE PAID FOR AT THE LUMP SUM PRICE FOR 'EXPANSION DEVICE'.
 APPLY SEALANT ALONG BOTTOM & SIDES OF TROUGH AS RECOMMENDED BY MANUFACTURER PRIOR TO PLACING EXPANSION DEVICE. TROUGH MUST BE FREE OF ALL DEBRIS.
 EACH STUD NO. 4 SHALL HAVE A WASHER & HEX. NUT OR TORQUE NUT TIGHTEN ALL NUTS TO MANUFACTURERS RECOMMENDED TORQUE.
 CLEAN BOLT HOLE CAVITY & FILL CAVITY DEPTH WITH SEALANT AND/OR BOLT HOLE PLUG. CLEAN EXCESS SEALANT FROM SURFACE.
 COST OF ITEM 9 IN LEGEND TO BE CONSIDERED INCIDENTAL TO 'CONC. MASONRY OVERLAY'.
 DETAILS OF FIELD SPLICE IN DEVICE SHALL BE SUBMITTED FOR APPROVAL.

STATE OF WISCONSIN DEPARTMENT OF TRANSPORTATION DIVISION OF HIGHWAYS	STRUCTURE B-32-24	Drawn BY LOY Checked J.C.K. 1975	SHEET 2 OF 2 X63591
--	-------------------	--	------------------------

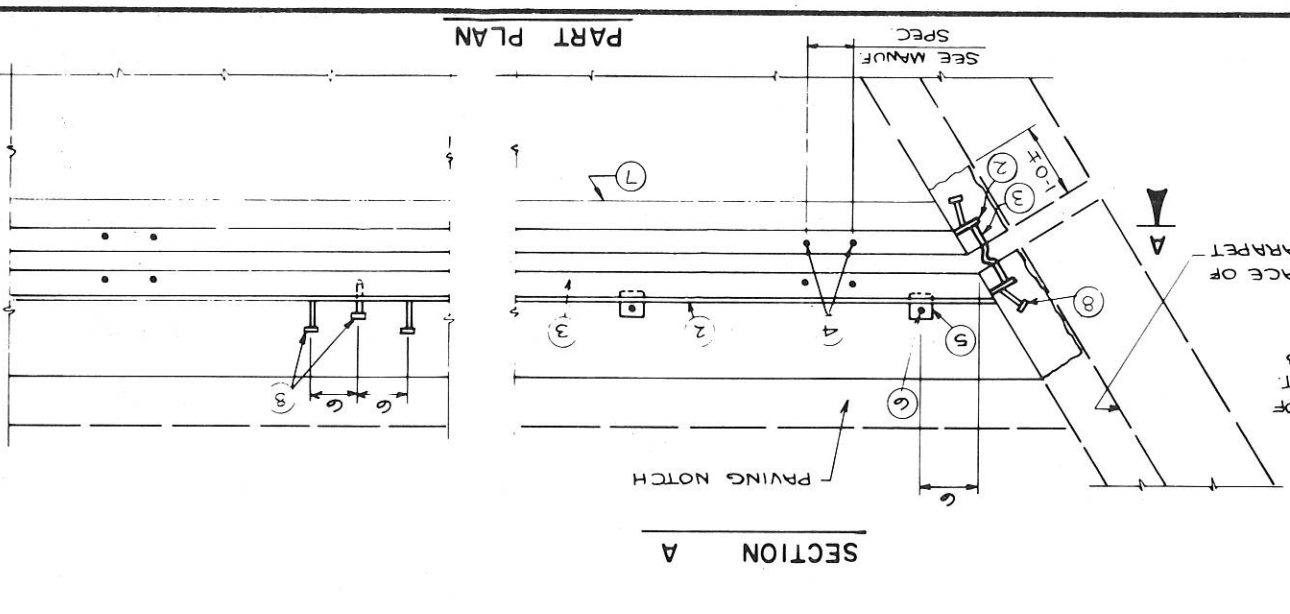
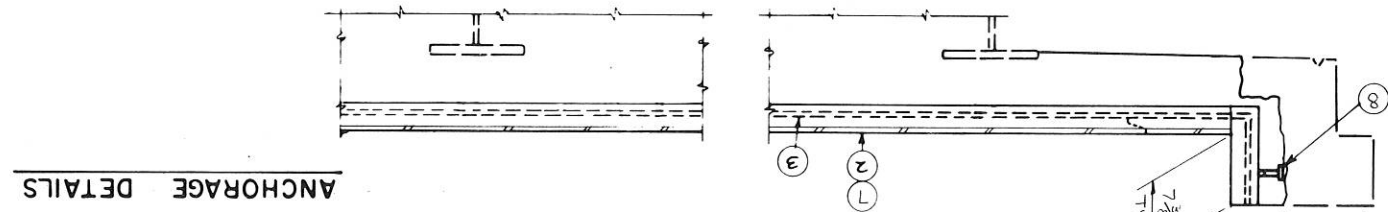
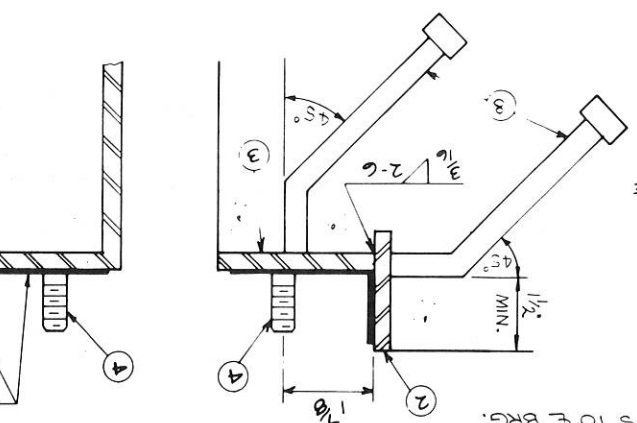


TEMPERATURE TABLE

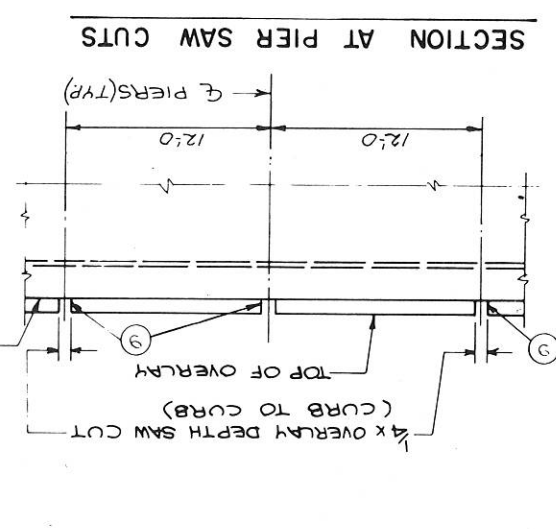
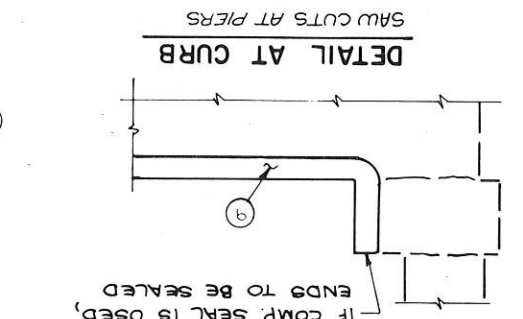
TEMP. JT. OPENING	90°	80°	70°	60°	50°	40°	30°
(FOR FEL-SPAN MODEL T-30 SA OR WABO ELASTO DAM MODEL 300S)	1	1 $\frac{1}{4}$	1 $\frac{1}{4}$	1 $\frac{3}{8}$	1 $\frac{1}{2}$	1 $\frac{5}{8}$	1 $\frac{3}{4}$

* SHADED UNDERSIDE DECK TEMP. (F)

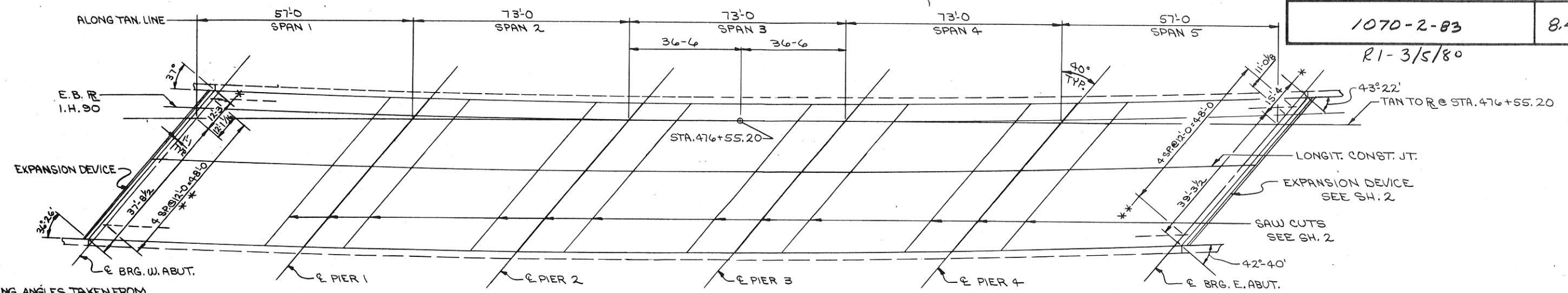
SECTION THRU NEW JOINT AT ABUTS. @ RT. L'S TO F. BRG.



SECTION THRU EXISTING JOINT AT ABUTS. (TO BE REMOVED)



R1-3/5/80

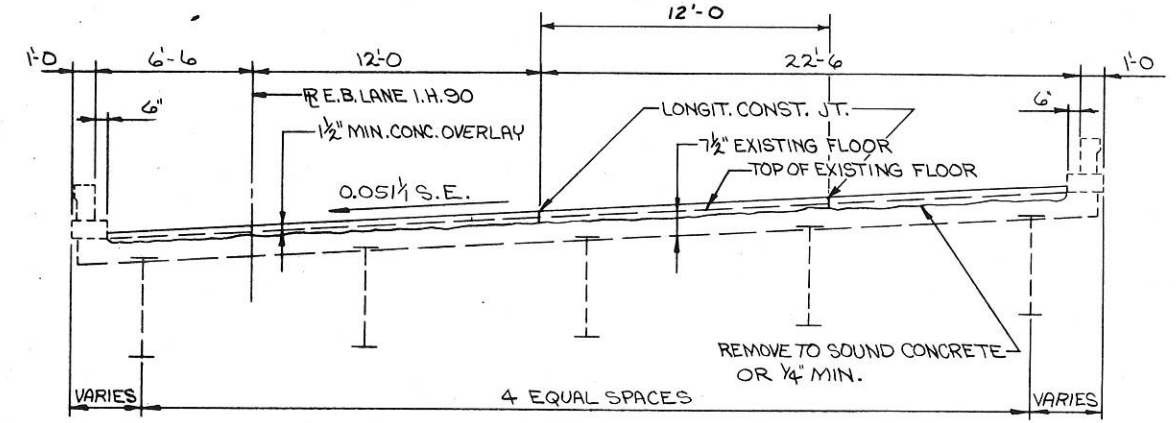


NOTE:
DIM. & WING ANGLES TAKEN FROM ORIGINAL PLANS. CONTRACTOR TO VERIFY THEM IN FIELD.

* DIM. TO GUTTER ALONG F.F. OF ABUT. BACKWALL
** GIRDER SPACING ALONG E BRG.

PLAN

CURVE DATA
Δ = 40° 54'
D = 1° 50'
T = 1165.4
L = 2230.9



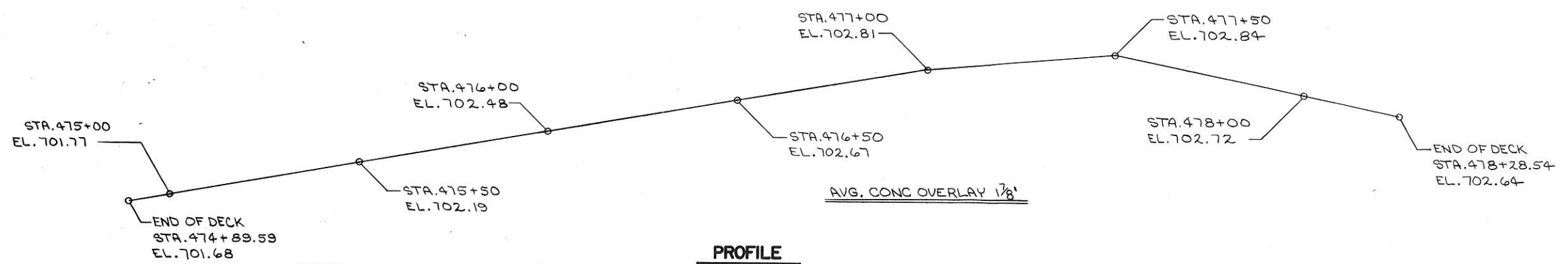
CROSS SECTION THRU ROADWAY
LOOKING EAST

DESIGN DATA

LIVE LOAD:
DESIGN RATING - HS 20 MOD
INVENTORY RATING - H 23
OPERATIONAL RATING - HS 27

LIST OF DRAWINGS

- 1. CONC. DECK OVERLAY — X63598
- 2. JOINT DETAILS — X63599



PROFILE

NOTE:
STATIONS & ELEVATIONS GIVEN IN PROFILE ARE ALONG R E.B. LANE I.H. 90 AT TOP OF OVERLAY.

BENCH MARK: KEIL D N.E. CORNER BRI. CURB
E.B. BRI. RR. TRACKS = EL. 702.96

TOTAL ESTIMATED QUANTITIES

BID ITEMS		
CONCRETE MASONRY OVERLAY	86	C.Y.
DECK PREPARATION	324	S.Y.
DECK CLEANING	1506	S.Y.
JOINT REPAIR	24	S.Y.
EXPANSION DEVICES	1	L.S.

No.	Date	Revision	By
STATE OF WISCONSIN DEPARTMENT OF TRANSPORTATION			
STRUCTURE B-32-25			
E.B.L. I.H. 90 OVER RAILROAD TRACKS			
County	LA CROSSE	Town	HAMILTON
Design Spec.	A.A.S.H.T.O. '78'	Load	HS 20 MOD.
Designed By	C.RAY	Checked	FO'M
Drawn By	LOY	Plans Checked	J.C.K.
Approved	W.A. Klone Chief Bridge Engineer		11-5-79 Date
CONC. DECK OVERLAY			SHEET 1 OF 2 X63598

LEGEND

- ① ELASTOMERIC EXPANSION DEVICE, FEL-SPAN MODEL T 30 SA OR WABO ELASTO DAM 300 S.
- ② BAR $2\frac{1}{2} \times \frac{3}{8}$. BUILD TO CONFORM TO RDWY. CROWN.
- ③ BAR $3\frac{1}{4} \times \frac{3}{8}$. WELD TO NO. 2 AS SHOWN.
- ④ THREADED STUDS PROVIDED BY MANUF. WELD TO NO. 3. & EXIST. PORTION OF WLG. X 39.5 S.
- ⑤ L 3 X $2\frac{1}{2} \times \frac{3}{8}$ - 3 LONG. PLACE AT 3:00 CTRS. WELD TO NO. 3. PROVIDE $1\frac{1}{2}$ " HOLE IN 2 1/2" LEG FOR NO. 6.
- ⑥ $\frac{3}{4}$ " ROD WITH 2 STD. NUTS & WASHERS. THREAD 4. FIELD DRILLED & GROUTED.
- ⑦ L $2\frac{1}{2} \times 2\frac{1}{2} \times \frac{5}{16}$ - CUT 2" LEG TO 1 1/8" - WELD 1 1/8" LEG TO EXIST. WLG. X 39.5 S (AS SHOWN).
- ⑧ $\frac{3}{4}$ " THREADED ROD WITH 2 STD. NUTS & WASHERS. FIELD WELD TO GIRDER FLANGE AS SHOWN. MAY BE ATTACHED BY BOLTING THRU FLANGE. IF BOLTED, BOLTS SHALL CLEAR BRG. STIFF BY 1 1/2" MIN.
- ⑨ L 3 X $2\frac{1}{2} \times \frac{3}{8}$ - 3 LONG. PLACE MID-WAY BTWN. GIRDERS. WELD TO NO. 3. PROVIDE $1\frac{1}{2}$ " HOLE IN 2 1/2" LEG FOR NO. 10.
- ⑩ $\frac{3}{4}$ " ROD. THREAD 4. TRCK WELD NUT TO NO. 9.
- ⑪ $\frac{1}{2}$ " X 0:6" STUDS. PLACE AT 6" ALT. CTRS. BEND AFTER WELDING TO NO. 2 & NO. 3.
- ⑫ THREE ALTERNATES:
- (A) INSTALL NEOPRENE COMPRESSION SEAL (ACME M-044 OR APPROVED EQUAL) RECESS 1/8" SEAL TO FULL WIDTH OF RDWY. PLUS
- (B) EACH CURB. NO SPICE PERMITTED.
- (C) FILL OPENING WITH HOT FUSED ELASTIC TYPE JOINT SEALER. HOLD 1/8" BELOW SURFACE OF CONC.
- (D) FILL OPENING WITH COLD APPLIED ELASTIC TYPE JOINT SEALER. HOLD 1/8" BELOW SURFACE OF CONC.

GENERAL NOTES

ELASTOMERIC JOINT ASSEMBLY, INCLUDING ANCHORAGE ARMOR & HARDWARE WILL BE PAID FOR AT THE LUMP SUM PRICE FOR EXPANSION DEVICE.

APPLY SEALANT ALONG BOTTOM & SIDES OF TROUGH AS RECOMMENDED BY MANUFACTURER PRIOR TO PLACING EXPANSION DEVICE. TROUGH MUST BE FREE OF ALL DEBRIS.

EACH STUD NO. 4 SHALL HAVE A WASHER & HEX. NUT OR TORQUE NUT. TIGHTEN ALL NUTS TO MANUFACTURER'S RECOMMENDED CLEAN BOLT HOLE CAVITY & FILL CAVITY DEPTH WITH SEALANT AND/OR BOLT HOLE PUG. CLEAN EXCESS SEALANT FROM SURFACE.

COST OF ITEM ⑨ IN LEGEND TO BE CONSIDERED INCIDENTAL TO 'CONC. MASONRY OVERLAY'.

DETAILS OF FIELD SPICE IN DEVICE SHALL BE SUBMITTED FOR APPROVAL.

JOINT DETAILS

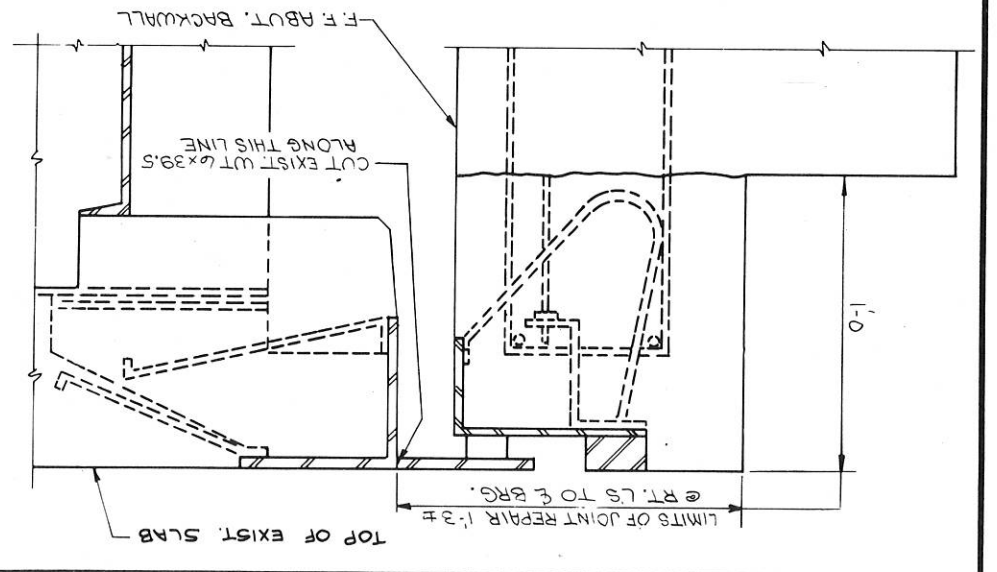
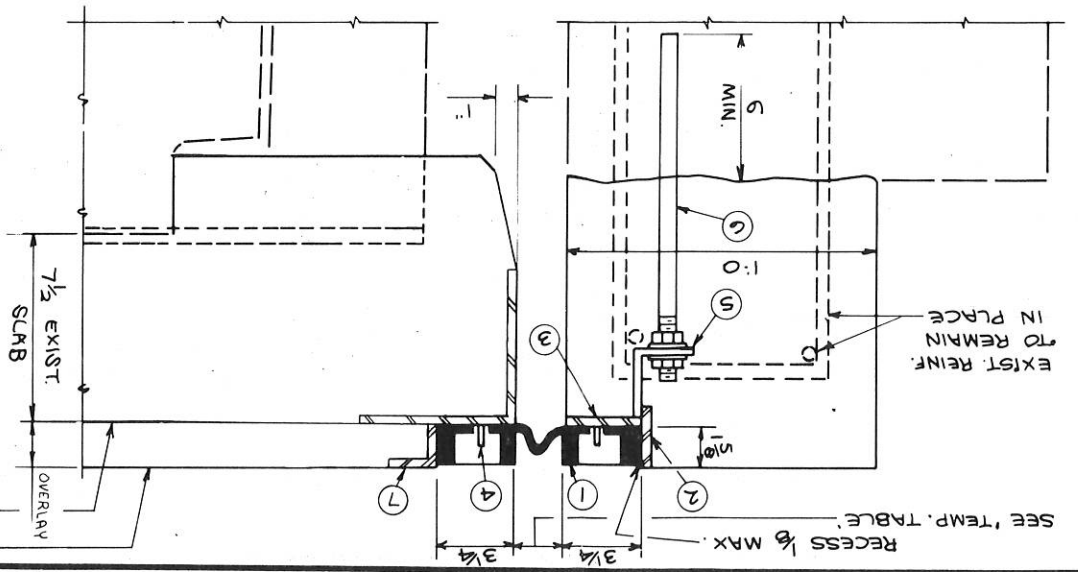
STATE OF WISCONSIN
DEPARTMENT OF TRANSPORTATION
DIVISION OF HIGHWAYS

STRUCTURE B-32-25

1975
BY L.O.V.
CHECKED J.C.K.

SHEET 2 OF 2
X63599

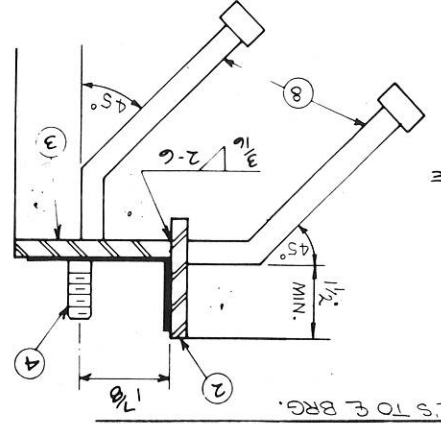
TOP OF OVERLAY



TEMPERATURE TABLE

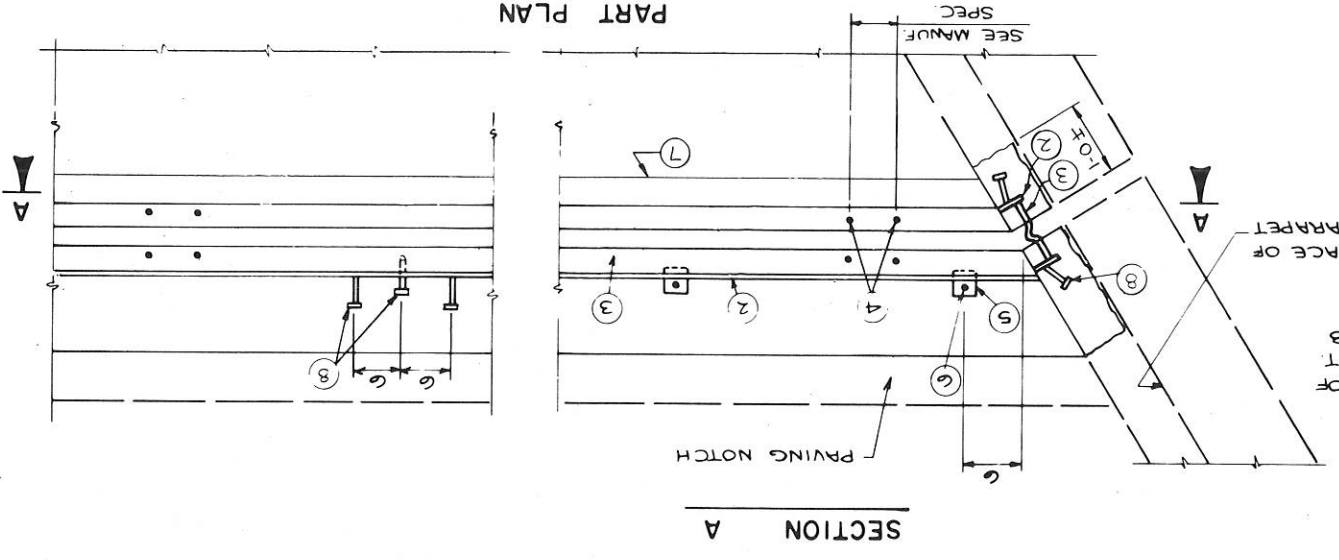
TEMP. JT. OPENING	90°	80°	70°	60°	50°	40°	30°
(FOR FEL-SPAN MODEL T-30 SA OR WABO ELASTO DAM MODEL 300 S)	1/8"	1"	1 1/8"	1 1/4"	1 1/2"	1 3/4"	1 5/8"
* SHADED UNDERSIDE DECK TEMP. (F)							

ANCHORAGE DETAILS

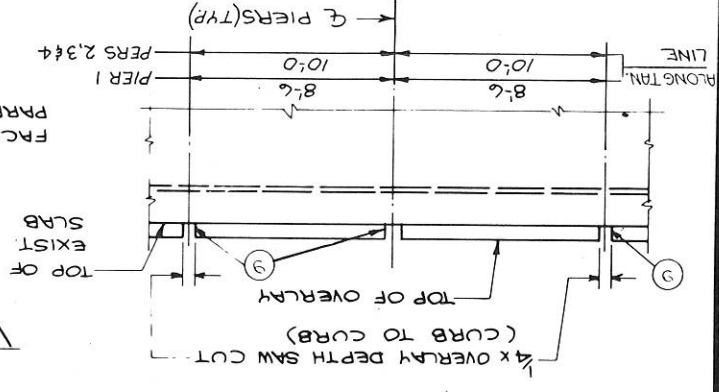


(FOR FEL-SPAN MODEL T-30 SA OR WABO ELASTO DAM MODEL 300 S)

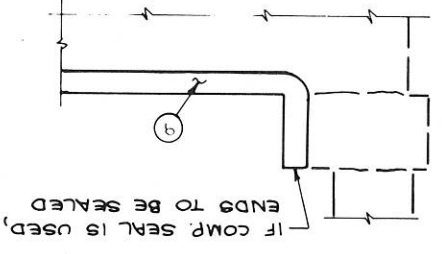
* SHADED UNDERSIDE DECK TEMP. (F)



SECTION AT PIER SAW CUTS

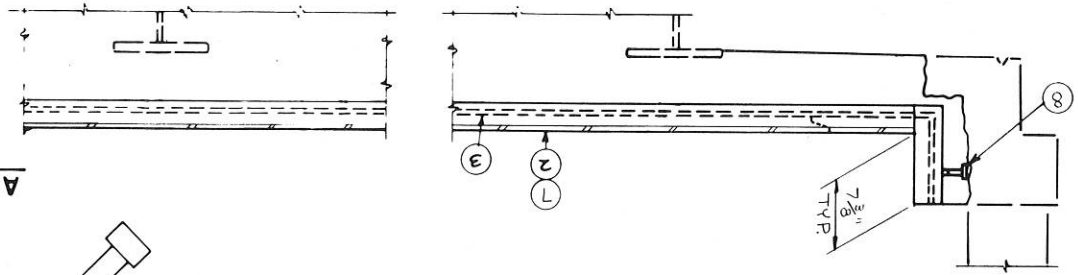


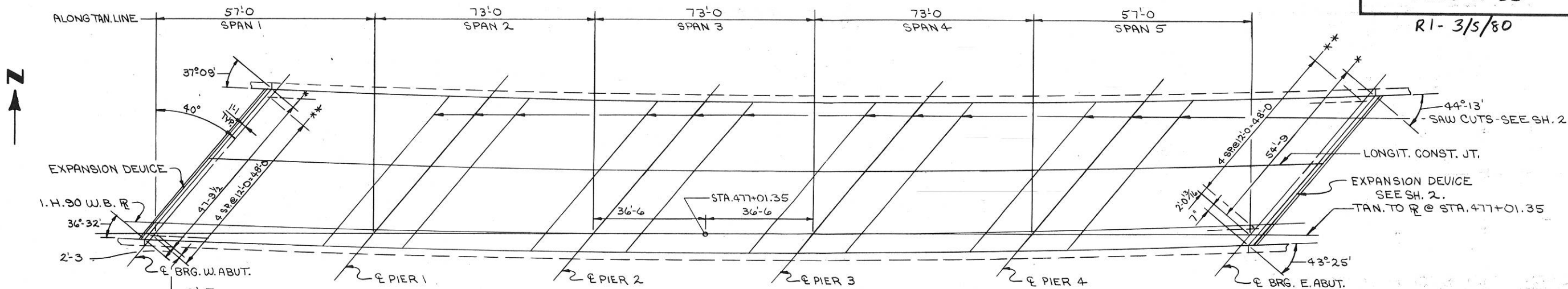
DETAIL AT CURB



SAW CUTS AT PIERS

SECTION A





NOTE: DIM. & WING ANGLES TAKEN FROM ORIGINAL PLANS. CONTRACTOR TO VERIFY THEM IN FIELD.

* DIM. TO GUTTER ALONG F.F. ABUT. BACK WALL.
** GIRDER SPACING ALONG ♀ BRG.

PLAN

CURVE DATA
 $\Delta = 43^{\circ}05'$
 $D = 2^{\circ}00'$
 $T = 1130.9$
 $L = 2154.2$

TOTAL ESTIMATED QUANTITIES

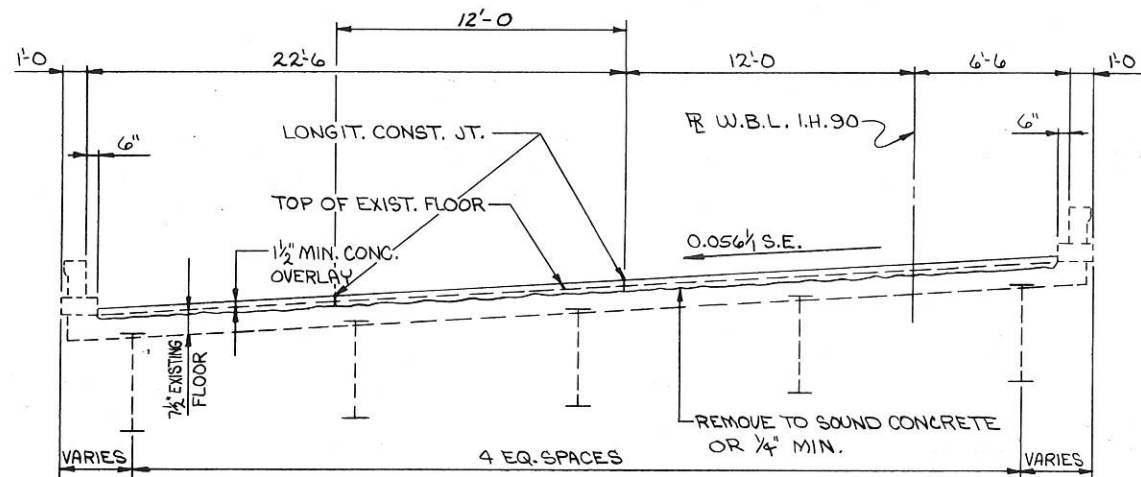
BID ITEMS	
CONCRETE MASONRY OVERLAY	86 C.Y.
DECK PREPARATION	371 S.Y.
DECK CLEANING	1507 S.Y.
JOINT REPAIR	24 S.Y.
EXPANSION DEVICES	1 L.S.

DESIGN DATA

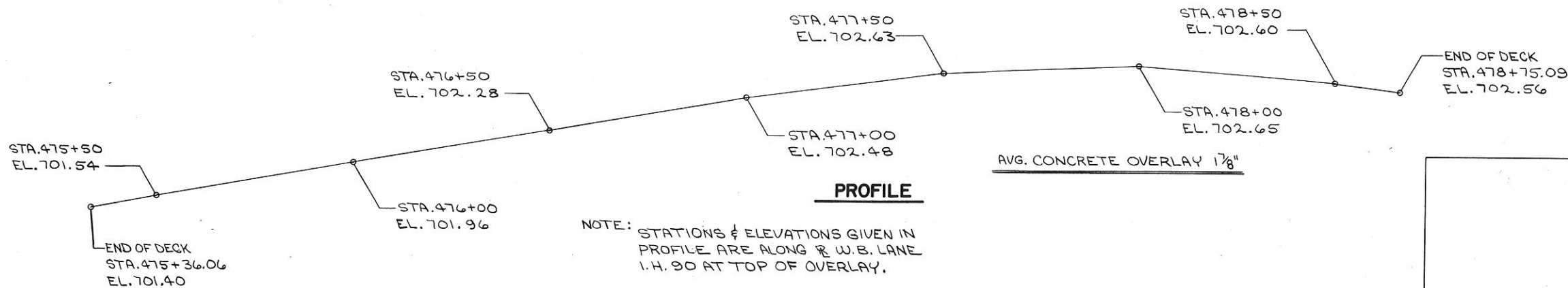
LIVE LOAD:
 DESIGN RATING - HS 20 MOD
 INVENTORY RATING - H 23
 OPERATIONAL RATING - HS 27

LIST OF DRAWINGS

1. CONC. DECK OVERLAY - X 63600
2. JOINT DETAILS - X 63601

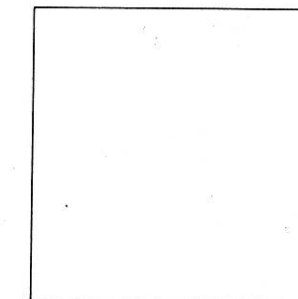


CROSS SECTION THRU ROADWAY
LOOKING EAST



PROFILE

NOTE: STATIONS & ELEVATIONS GIVEN IN PROFILE ARE ALONG ♀ W.B. LANE I.H. 90 AT TOP OF OVERLAY.



LAYOUT

No.	Date	Revision	By
STATE OF WISCONSIN DEPARTMENT OF TRANSPORTATION DIVISION OF HIGHWAYS			
STRUCTURE B-32-26			
W.B.L. I.H. 90 OVER RAILROAD TRACKS			
County	LA CROSSE	Town/Village	HAMILTON
Design Spec.	A.A.S.H.T.O. '78'	Load	HS 20 MOD
Designed By	C. RAY	Drawn By	LOY
Checked	FO'M	Plans Checked	J.C.K.
Approved	W.A. Kelso Chief Bridge Engineer		11-5-79 Date
CONC. DECK OVERLAY			SHEET 1 OF 2 X 63600

LEGEND

① ELASTOMERIC EXPANSION DEVICE, FEL-SPAN MODEL T 30 SA OR WABO ELASTO DAM 300S.

② BAR $2\frac{1}{2} \times \frac{3}{8}$. BUILD TO CONFORM TO RDWY. CROWN.

③ BAR $3\frac{1}{4} \times \frac{3}{8}$. WELD TO NO. 2 AS SHOWN.

④ THREADED STUDS PROVIDED BY MANUF. WELD TO NO. 3 & EXIST. PORTION OF WT. 6×39.5 .

⑤ L $3 \times 2\frac{1}{2} \times \frac{3}{8}$ - 3 LONG. PLACE AT 3:0 CTRS. WELD TO NO. 3. PROVIDE $1\frac{1}{2}$ " HOLE IN $2\frac{1}{2}$ " LEG FOR NO. 6.

⑥ $3\frac{1}{4}$ " ROD WITH 2 STD. NUTS & WASHERS, THREAD 4". FIELD DRILLED & GROUDED.

⑦ L $2\frac{1}{2} \times 2 \times \frac{5}{16}$ - CUT 2" LEG TO $1\frac{1}{8}$ " - WELD $1\frac{1}{8}$ " LEG TO EXIST. WT. 6×39.5 (AS SHOWN).

⑧ $3\frac{1}{4}$ " THREADED ROD WITH 2 STD. NUTS & WASHERS. FIELD WELD TO GIRDER FLANGE AS SHOWN. MAY BE ATTACHED BY BOLTING THRU FLANGE. IF BOLTED, BOLTS SHALL CLEAR BRG. STIFF BY $1\frac{1}{2}$ " MIN.

⑨ L $3 \times 2\frac{1}{2} \times \frac{3}{8}$ - 3 LONG. PLACE MID-WAY BTWN. GIRDERS. WELD TO NO. 3. PROVIDE $\frac{1}{2}$ " HOLE IN $2\frac{1}{2}$ " LEG FOR NO. 10.

⑩ $3\frac{1}{4}$ " ROD, THREAD 4". THICK WELD NUT TO NO. 7.

⑪ $\frac{1}{2}$ " ϕ X 0:6 STUDS. PLACE AT 6 ALT. CTRS. BEND AFTER WELDING TO NO. 2 & NO. 3.

⑫ THREE ALTERNATES:

(A) INSTALL NEOPRENE COMPRESSION SEAL (ACME M-044 OR APPROVED EQUAL) RECESS $1\frac{1}{2}$ " TOP OF EXIST. SLAB SEAL TO EXTEND FULL WIDTH OF RDWY. PLUS EACH CURB. NO SPICE PERMITTED.

(B) FILL OPENING WITH HOT Poured ELASTIC TYPE JOINT SEALER. HOLD $\frac{1}{8}$ " BELOW SURFACE OF CONC.

(C) FILL OPENING WITH COLD APPLIED ELASTIC TYPE JOINT SEALER. HOLD $\frac{1}{8}$ " BELOW SURFACE OF CONC.

⑬ ELASTOMERIC JOINT ASSEMBLY, INCLUDING ANCHORAGE ARMOR & HARDWARE WILL BE PAID FOR AT THE UMP SUM PRICE FOR EXPANSION DEVICE.

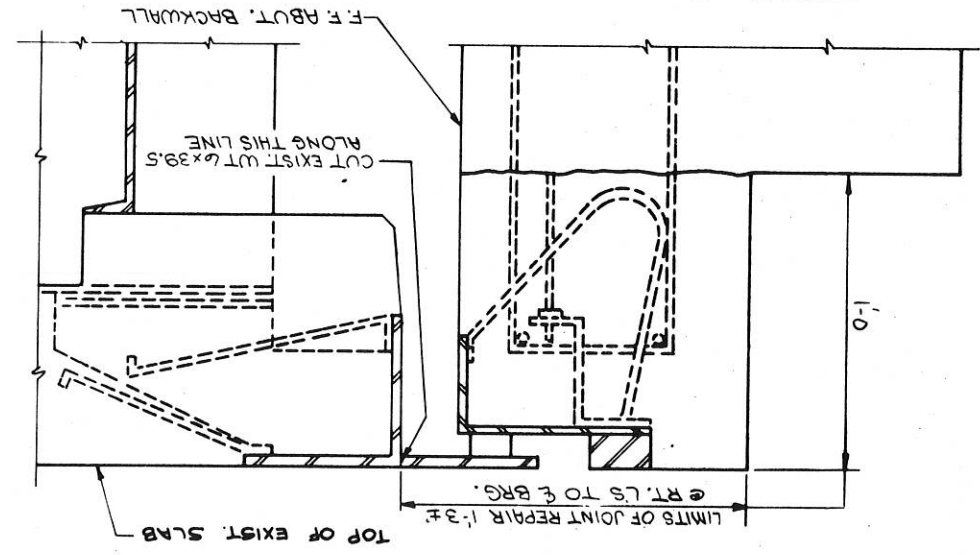
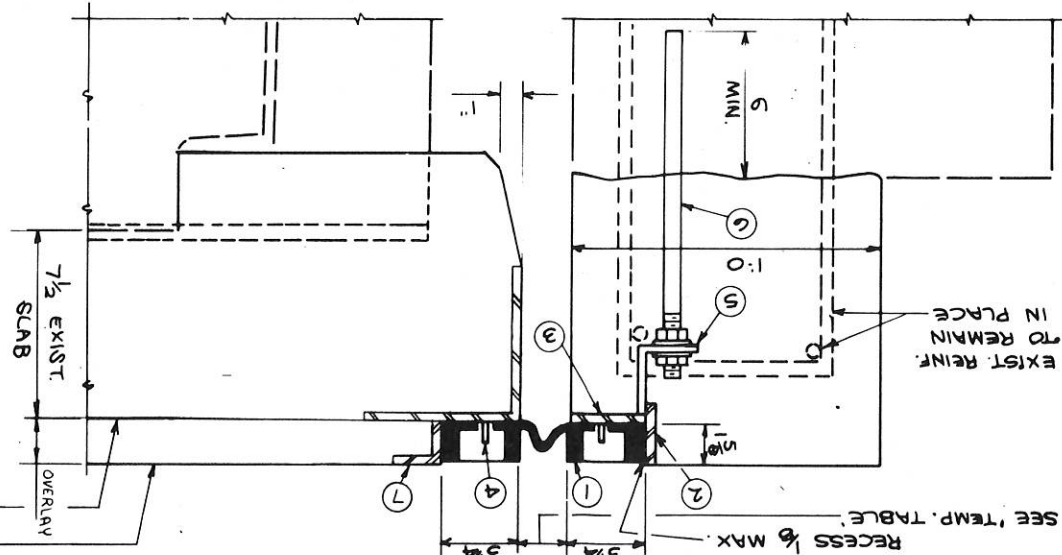
⑭ APPLY SEALANT ALONG BOTTOM & SIDES OF TROUGH AS RECOMMENDED BY MANUFACTURER PRIOR TO PLACING EXPANSION DEVICE. TROUGH MUST BE FREE OF ALL DEBRIS.

⑮ EACH STUD NO. 4 SHALL HAVE A WASHER & HEX. NUT OR TORQUE NUT. TIGHTEN ALL NUTS TO MANUFACTURER'S RECOMMENDED TORQUE.

⑯ CLEAN BOLT HOLE CAVITY & FILL CAVITY DEPTH WITH SEALANT AND/OR BOLT HOLE PLUG. CLEAN EXCESS SEALANT FROM SURFACE.

⑰ COST OF ITEM ⑬ IN LEGEND TO BE CONSIDERED INCIDENTAL TO 'CONC. MASONRY OVERLAY'.

⑱ DETAILS OF FIELD SPICE IN DEVICE SHALL BE SUBMITTED FOR APPROVAL.



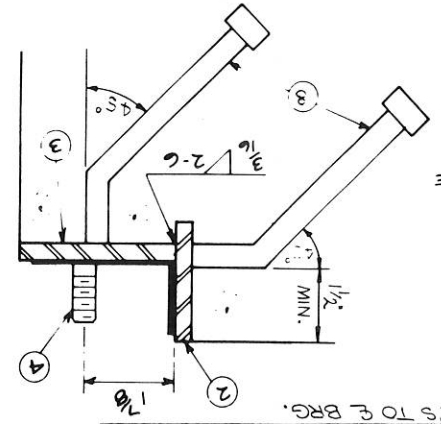
SECTION THRU EXISTING JOINT AT ABUTS. (TO BE REMOVED)

TEMPERATURE TABLE

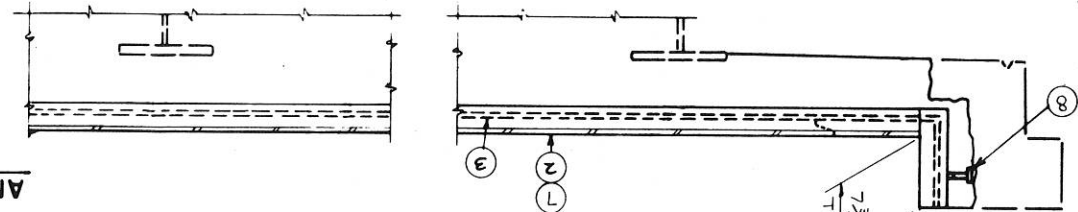
TEMP. JT. OPENING	MODEL T-30SA OR WABO ELASTO DAM MODEL 300S	FOR FEL-SPAN
90°	1	7/8"
80°	1	1"
70°	1 1/2	1 1/8"
60°	1 1/2	1 1/4"
50°	1 1/2	1 1/2"
40°	1 1/2	1 3/4"
30°	1 1/2	1 7/8"

* SHADED UNDERSIDE
@ RT. L.S. TO F. BRG.
DECK TEMP (F)

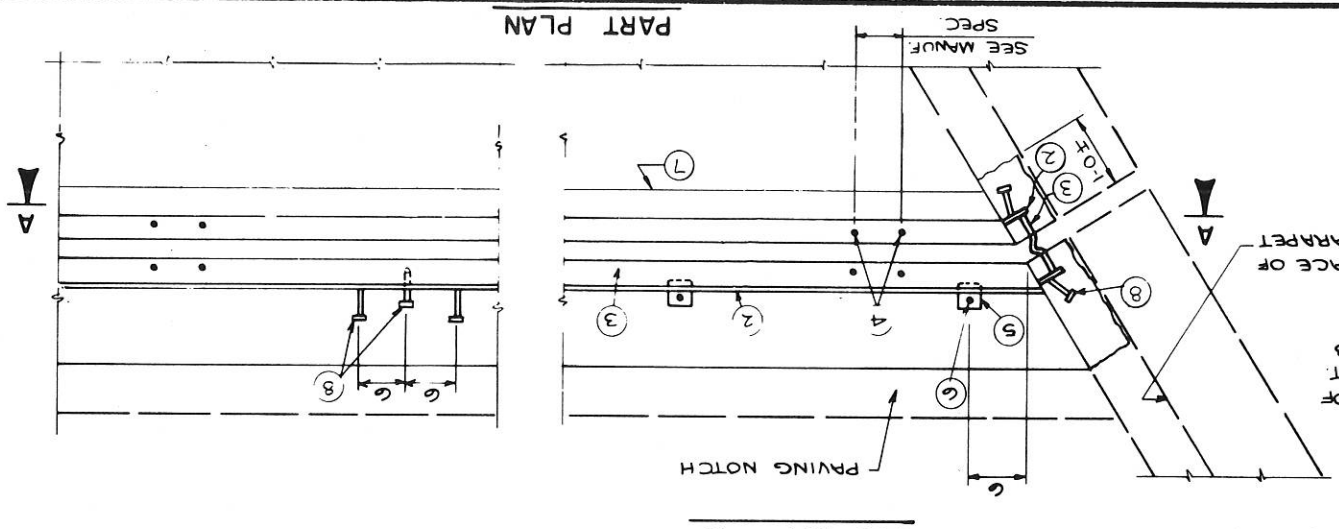
SECTION THRU NEW JOINT AT ABUTS.



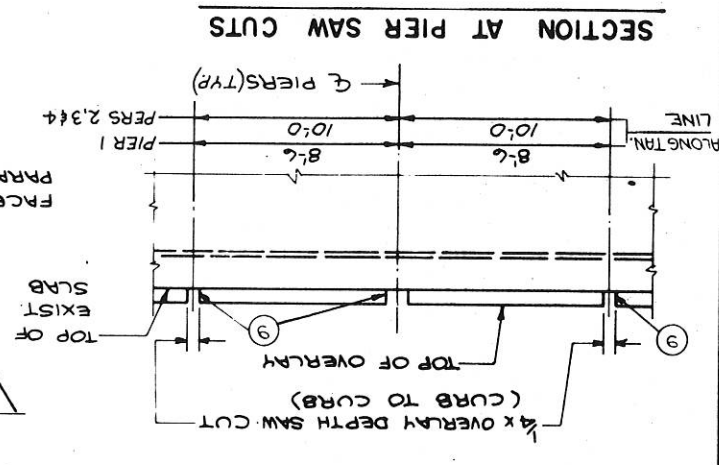
ANCHORAGE DETAILS



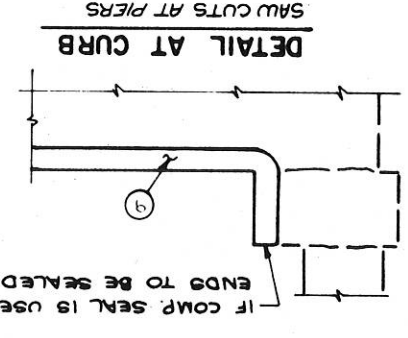
SECTION A



PART PLAN



SECTION AT PIER SAW CUTS



DETAIL AT CURB

X63601		JOINT DETAILS	
SHEET 2 OF 2		1975	
Drawn by LOY		Checked by J.C.K.	
STRUCTURE B-32-26			
DIVISION OF HIGHWAYS			
STATE OF WISCONSIN			
DEPARTMENT OF TRANSPORTATION			
Revision			
By			
Date			

Plan # 323