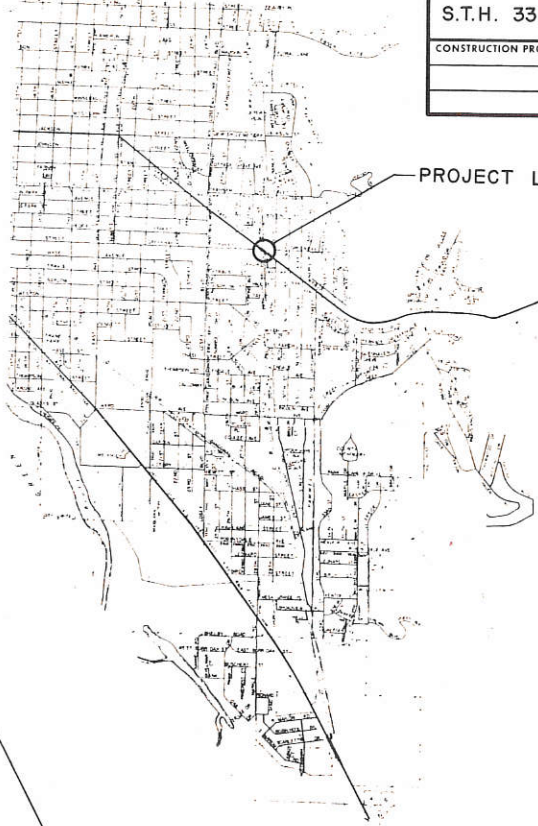
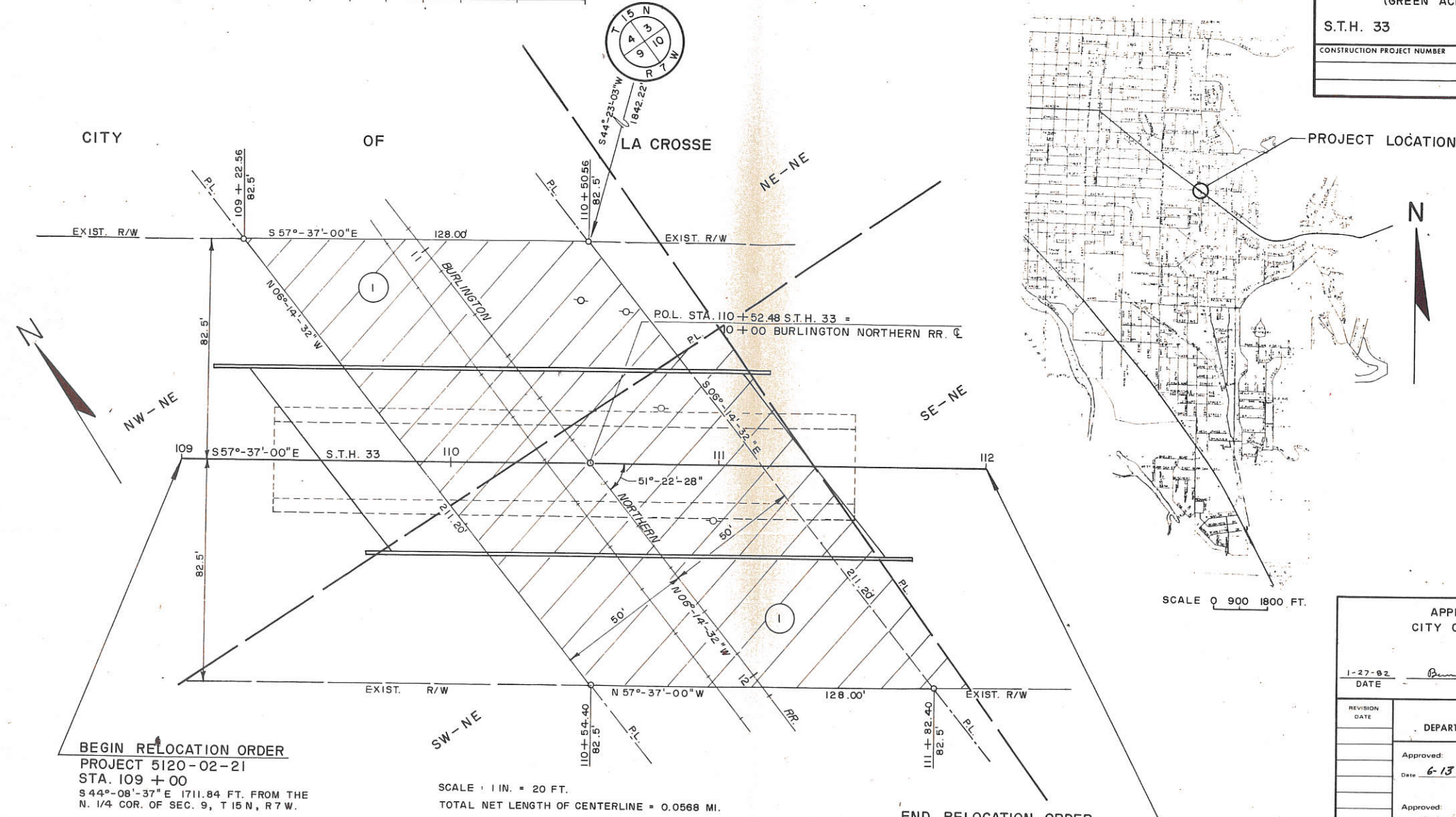


SCHEDULE OF LANDS AND INTERESTS REQUIRED									
PARCEL NUMBER	SHEET NUMBER	OWNER	INTEREST	HWY. EASE ACRES	ACRES REQUIRED			TOTAL REMAINING ACRES	OPERATIONS PROJECT ID.
					NEW	EXIST	TOTAL		
1	4.0	BURLINGTON NORTHERN RR	HIGHWAY EASEMENT	0.533	—	—	—	—	5120-02-21

BEARING ORIENTATION
 RIGHT OF WAY PLAT BEARINGS ARE ORIENTED TO THE MERIDIAN BETWEEN THE SOUTHEAST CORNER AND THE NORTHEAST CORNER OF SECTION 9, T 15 N, R 7 W., WITH THE MERIDIAN BEARING ESTABLISHED AS N 02°-54'-14" W. THE DIFFERENCE BETWEEN PLAT BEARINGS REPRESENT PLANE ANGLES IN DEGREES, MINUTES AND SECONDS TO THE NEAREST SECOND.

R/W PROJECT NUMBER	5120-02-21	SHEET NUMBER	4.0	TOTAL SHEETS	
FEDERAL PROJECT NUMBER		PLAT OF RIGHT OF WAY REQUIRED FOR STATE ROAD, CITY OF LA CROSSE (GREEN ACRES OVERHEAD)			
		S.T.H. 33 LA CROSSE COUNTY			
		CONSTRUCTION PROJECT NUMBER			



BEGIN RELOCATION ORDER
 PROJECT 5120-02-21
 STA. 109 + 00
 S 44°-08'-37" E 1711.84 FT. FROM THE
 N. 1/4 COR. OF SEC. 9, T 15 N, R 7 W.

SCALE : 1 IN. = 20 FT.
 TOTAL NET LENGTH OF CENTERLINE = 0.0568 MI.

END RELOCATION ORDER
 PROJECT 5120-02-21
 STA. 112 + 00
 S 46°-08'-30" E 2004.80 FT. FROM THE
 N 1/4 COR. OF SEC. 9, T 15 N, R 7 W.

RIGHT-OF-WAY BOUNDARIES ARE DEFINED WITH COURSES OF THE PERIMETER OF THE HIGHWAY LANDS REFERENCED TO THE U.S. PUBLIC LAND SURVEY OR OTHER SURVEYS OF PUBLIC RECORD. OTHER INFORMATION IS PROVIDED TO SUPPLEMENT THE BASIC PERIMETER DESCRIPTION AND SHALL NOT BE CONSTRUED TO PREVAIL OVER THE PERIMETER DESCRIPTION.

APPROVED FOR CITY OF LA CROSSE	
1-27-82 DATE	<i>Brenda M. ...</i> CITY ENGINEER
REVISION DATE	STATE OF WISCONSIN DEPARTMENT OF TRANSPORTATION
Approved: Date 6-13-83	<i>T.R. Keyser</i> District Engineer
Approved: Date 7-6-83	<i>B.J. ...</i> Director, Bureau of Real Estate
Approved: Date	U.S. DEPARTMENT OF TRANSPORTATION FEDERAL HIGHWAY ADMINISTRATION REGION 5 - WISCONSIN DIVISION