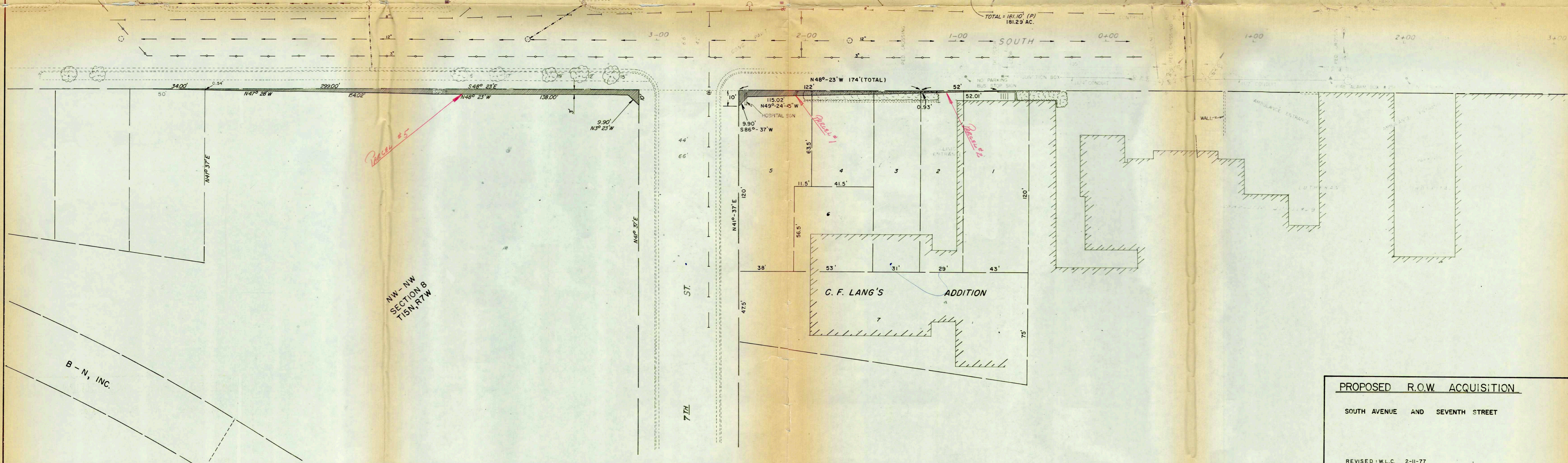
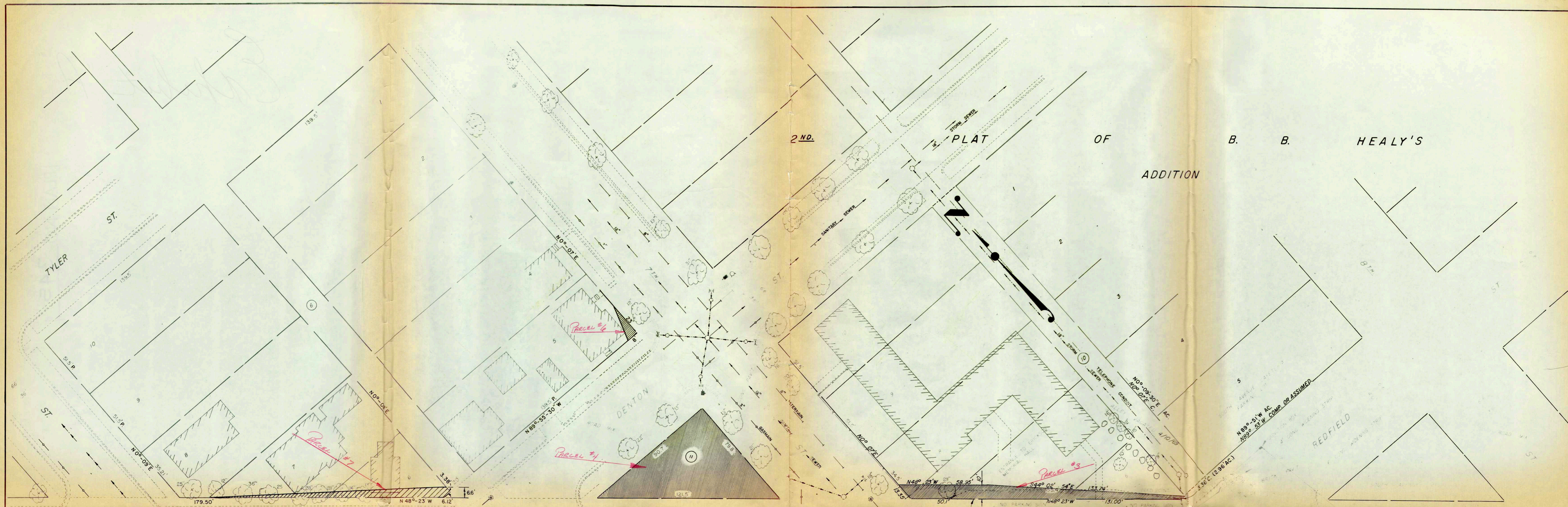


2ND. PLAT OF B. B. HEALY'S

ADDITION



NW - NW SECTION 8 T15N, R7W

B - N, INC.

PROPOSED R.O.W. ACQUISITION

SOUTH AVENUE AND SEVENTH STREET

REVISED: W.L.C. 2-11-77
 DRAWN BY: J.E.B. 9/3/76

SCALE 1"=30'