

**CONVENTIONAL SIGNS AND ABBREVIATIONS
LINES & SYMBOLS**

STATE		LOT & TIE	
COUNTY		SLOPE INTERCEPTS	
TOWNSHIP & RANGE		UNDERGROUND UTILITY	
SECTION		IRON PIN/PIPE	
QUARTER		POWER POLE	
SIXTEENTH		TELEPHONE POLE	
NEW CENTERLINE		TELEPHONE PEDESTAL	
NEW R/W		MONUMENTED R/W POINT	
OLD R/W		NO ACCESS (TO BE ACQUIRED)	
PROPERTY LINE		NO ACCESS (PRIOR ACQUISITION)	
CORPORATE LIMITS		NO ACCESS (BY STATUTE)	

ABBREVIATIONS

AP	ACCESS POINT	MON	MONUMENT
AH	AHEAD		
ARC	ARC LENGTH	OL	OUTLOT
BK	BACK	PC	POINT OF CURVATURE
B	BARN	PI	POINT OF INTERSECTION
BLK	BLOCK	PT	POINT OF TANGENCY
CEM.	CEMETERY	PCC	POINT OF COMPOUND CURVATURE
C	CENTERLINE	PL	PROPERTY LINE
CH	CHANNEL		
CH-CH	CHANNEL CHANGE	R	RADIUS
C.T.H.	COUNTY TRUNK HIGHWAY	R/W	REFERENCE LINE
D	DEGREE OF CURVE	REM	REMAINING
		RES	RESTAURANT
ET. AL.	AND OTHERS	SEC	SECTION
EX.	EXISTING	SS	SERVICE STATION
		S	SHED
FDN.	FOUNDATION	STH	STATE TRUNK HIGHWAY
		STA	STATION
		ST	STORE
G.	GARAGE	T	TANGENT LENGTH OF CURVE
G.L.	GOVERNMENT LOT	TAV	TAVERN
G.N.	GRID NORTH	TEMP	TEMPORARY
		T	TRANSIT LINE
H.	HOUSE	U.S.H.	UNITED STATES HIGHWAY
H.T.	HOUSE TRAILER	WH	WAREHOUSE
I.H.	INTERSTATE HIGHWAY	X	EAST GRID COORDINATE
I.P.	IRON PIN/PIPE	Y	NORTH GRID COORDINATE
L	LENGTH OF CURVE		
LC	LAND CONTRACT/LONG CHORD		
L.H.E.	LIMITED HIGHWAY EASEMENT		
L.C.B.	LONG CHORD BEARING		

NOTES

COORDINATES AND BEARINGS ON THIS PLAT ARE ORIENTED TO THE WISCONSIN COORDINATE SYSTEM SOUTH ZONE. ALL PLAT DISTANCES ARE GROUND LENGTH AND MAY BE CONVERTED TO GRID LENGTH BY MULTIPLYING THE DISTANCE BY THE GRID FACTOR PROVIDED ON THE DETAIL SHEETS.

RIGHT OF WAY MONUMENTS ARE "TYPE 2" AND ARE PLACED PRIOR TO OR AT THE TIME OF LAND TITLE TRANSFER.

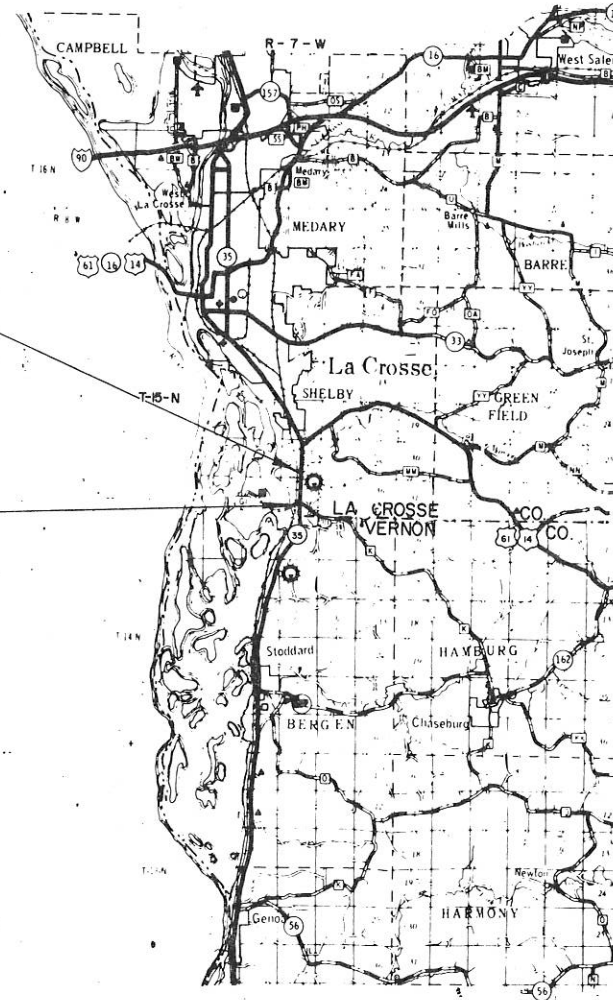
RIGHT OF WAY BOUNDARIES ARE DEFINED WITH COURSES OF THE PERIMETER OF THE HIGHWAY LANDS REFERENCED TO THE U.S. PUBLIC LAND SURVEY OR OTHER SURVEYS OF PUBLIC RECORD.

END RELOCATION ORDER

N01°-47'-12"W 4078.05' FROM THE CENTER OF SEC. 34, T-15 N, R-7 W.

BEGIN RELOCATION ORDER

N03°-59'-21"E 1040.15' FROM THE S. 1/4 COR. OF SEC. 34, T-15 N, R-7 W.



LAYOUT
0 1 2 MI.
SCALE

R/W PROJECT NUMBER 5163-07-22	SHEET NUMBER 4.0	TOTAL SHEETS 4.3
FEDERAL PROJECT NUMBER		
PLAT OF RIGHT OF WAY REQUIRED FOR SO. CO. LINE-U.S.H. 14		
S.T.H. 35	LA CROSSE CO.	

TOTAL NET LENGTH OF CENTERLINE = 1.076 MI.

REVISION DATE 8-24-88	STATE OF WISCONSIN DEPARTMENT OF TRANSPORTATION
APPROVED:	
DATE: 7-17-88	<i>T.R. K...</i> DISTRICT TRANSPORTATION DIRECTOR
APPROVED:	
DATE: 3/23/88	<i>J.M. C...</i> STATE REAL ESTATE MANAGER FOR HWYS
U.S. DEPARTMENT OF TRANSPORTATION FEDERAL HIGHWAY ADMINISTRATION REGION 5 - WISCONSIN DIVISION	
APPROVED:	
DATE:	DIVISION ADMINISTRATOR

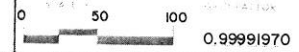
632.4 WATER ELEVATION

REVISION DATE
8-24-88

S.T.H. 35 LA CROSSE 3-17-88

5163-07-22

4.2



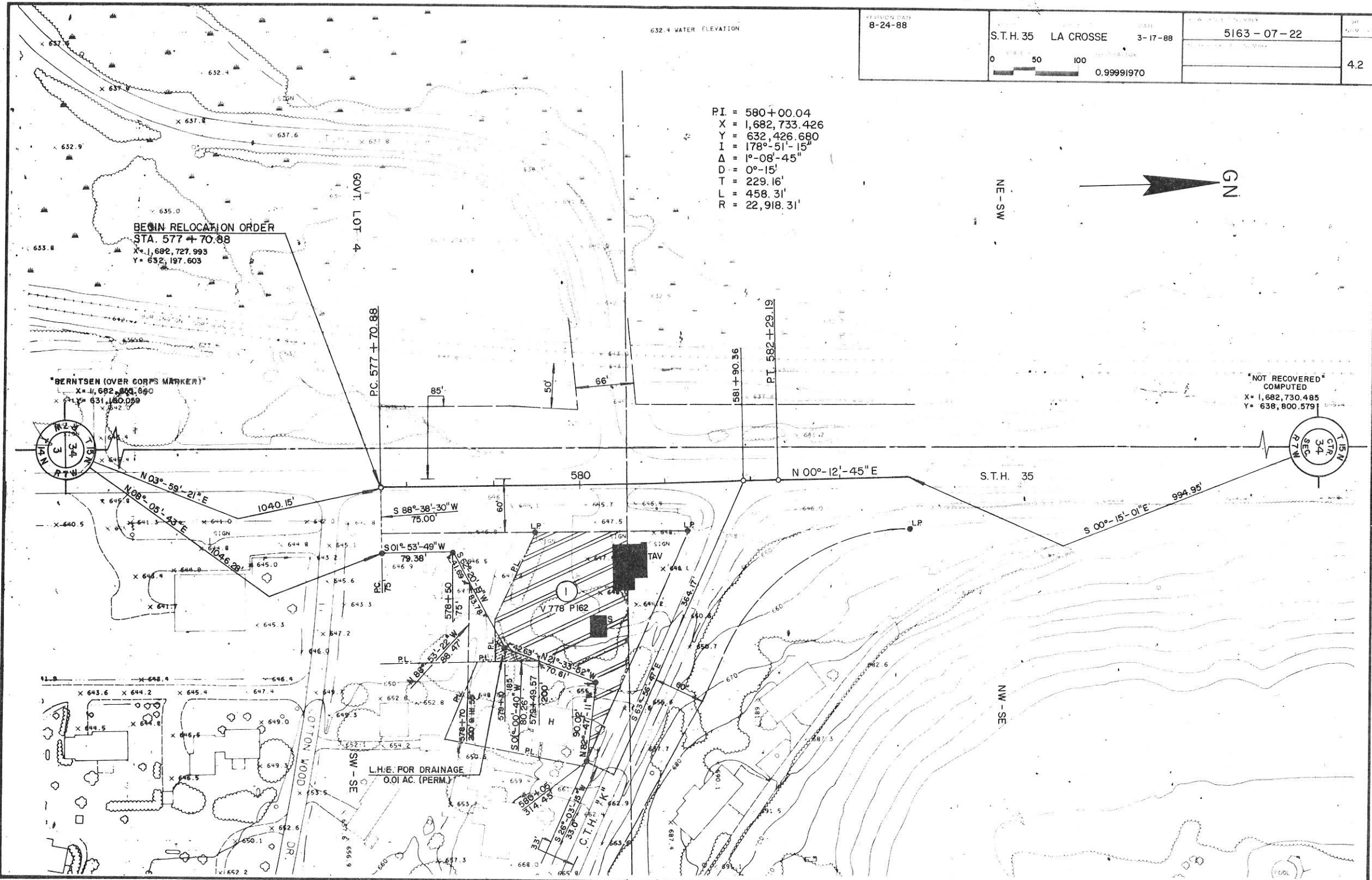
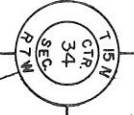
PI = 580+00.04
 X = 1,682,733.426
 Y = 632,426.680
 I = 178°-51'-15"
 Δ = 1°-08'-45"
 D = 0°-15'
 T = 229.16'
 L = 458.31'
 R = 22,918.31'



BEGIN RELOCATION ORDER
 STA. 577+70.88
 X = 1,682,727.993
 Y = 632,197.603

"BERNTSEN (OVER CORPS MARKER)"
 X = 1,682,841.890
 Y = 631,140.059

"NOT RECOVERED"
 COMPUTED
 X = 1,682,730.485
 Y = 638,800.579



L.H.E. FOR DRAINAGE
 0.01 AC. (PERM.)

REVISION DATE

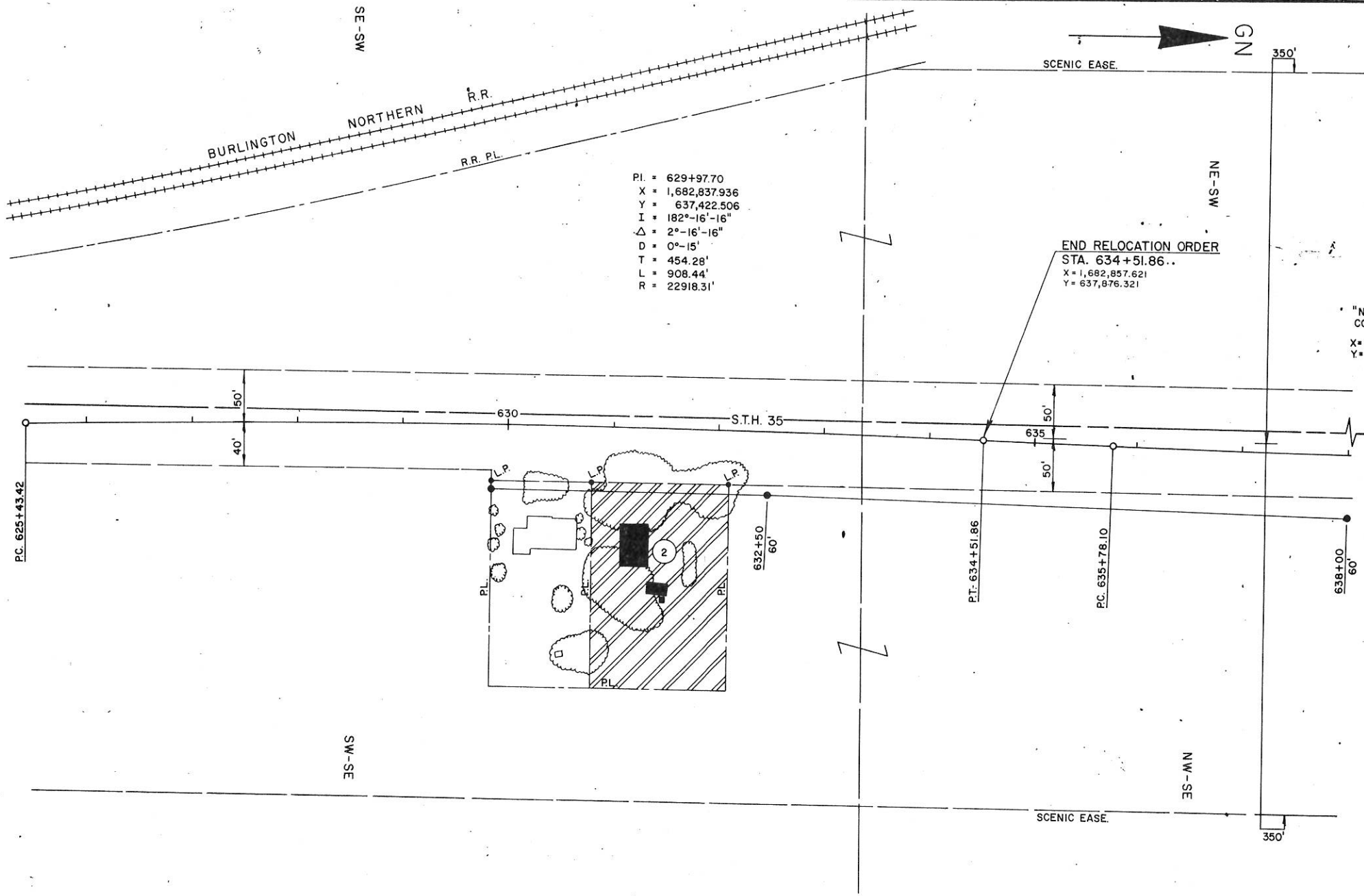
ROUTE S.T.H. 35 COUNTY LA CROSSE DATE 8-24-88

R/W PROJECT NUMBER 5163-07-22

SHEET NUMBER 4.3

SCALE FT 0 50 100 GRID FACTOR 0.99991970

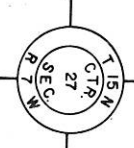
FEDERAL PROJECT NUMBER



PI = 629+97.70
 X = 1,682,837.936
 Y = 637,422.506
 I = 182°-16'-16"
 Δ = 2°-16'-16"
 D = 0°-15'
 T = 454.28'
 L = 908.44'
 R = 22918.31'

END RELOCATION ORDER
 STA. 634+51.86..
 X = 1,682,857.621
 Y = 637,876.321

"NOT RECOVERED"
 COMPUTED COORD.
 X = 1,682,875.008
 Y = 639,082.626



**CONVENTIONAL SIGNS AND ABBREVIATIONS
LINES & SYMBOLS**

STATE		LOT & TIE	
COUNTY		SLOPE INTERCEPTS	
TOWNSHIP & RANGE		UNDERGROUND UTILITY	
SECTION		IRON PIN/PIPE	
QUARTER		POWER POLE	
SIXTEENTH		TELEPHONE POLE	
NEW CENTERLINE		TELEPHONE PEDESTAL	
NEW R/W		MONUMENTED R/W POINT	
OLD R/W		NO ACCESS (TO BE ACQUIRED)	
PROPERTY LINE		NO ACCESS (PRIOR ACQUISITION)	
CORPORATE LIMITS		NO ACCESS (BY STATUTE)	

ABBREVIATIONS

A.P.	ACCESS POINT	MON.	MONUMENT
AH	AHEAD		
ARC	ARC LENGTH	O.L.	OUTLOT
BK	BACK	PC	POINT OF CURVATURE
B.	BARN	PI	POINT OF INTERSECTION
BLK.	BLOCK	PT	POINT OF TANGENCY
		PCC	POINT OF COMPOUND CURVATURE
CEM.	CEMETERY	PL	PROPERTY LINE
C	CENTERLINE		
CH	CHANNEL	R.	RADIUS
CH-CH	CHANNEL CHANGE	R/W	REFERENCE LINE
C.T.H.	COUNTY TRUNK HIGHWAY	REM	REMAINING
		RES	RESTAURANT
D	DEGREE OF CURVE	SEC.	SECTION
		SS	SERVICE STATION
ET. AL.	AND OTHERS	S	SHED
EX.	EXISTING	S.T.H.	STATE TRUNK HIGHWAY
		STA	STATION
FDN.	FOUNDATION	ST	STORE
		T.	TANGENT LENGTH OF CURVE
G.	GARAGE	TAV	TAVERN
G.L.	GOVERNMENT LOT	TEMP.	TEMPORARY
G.N.	GRID NORTH	T	TRANSIT LINE
H.	HOUSE	U.S.H.	UNITED STATES HIGHWAY
H.T.	HOUSE TRAILER	WH.	WAREHOUSE
I.H.	INTERSTATE HIGHWAY	X	EAST GRID COORDINATE
I.P.	IRON PIN/PIPE	Y	NORTH GRID COORDINATE
L	LENGTH OF CURVE		
L.C.	LAND CONTRACT/LONG CHORD		
L.H.E.	LIMITED HIGHWAY EASEMENT		
L.C.B.	LONG CHORD BEARING		

NOTES

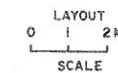
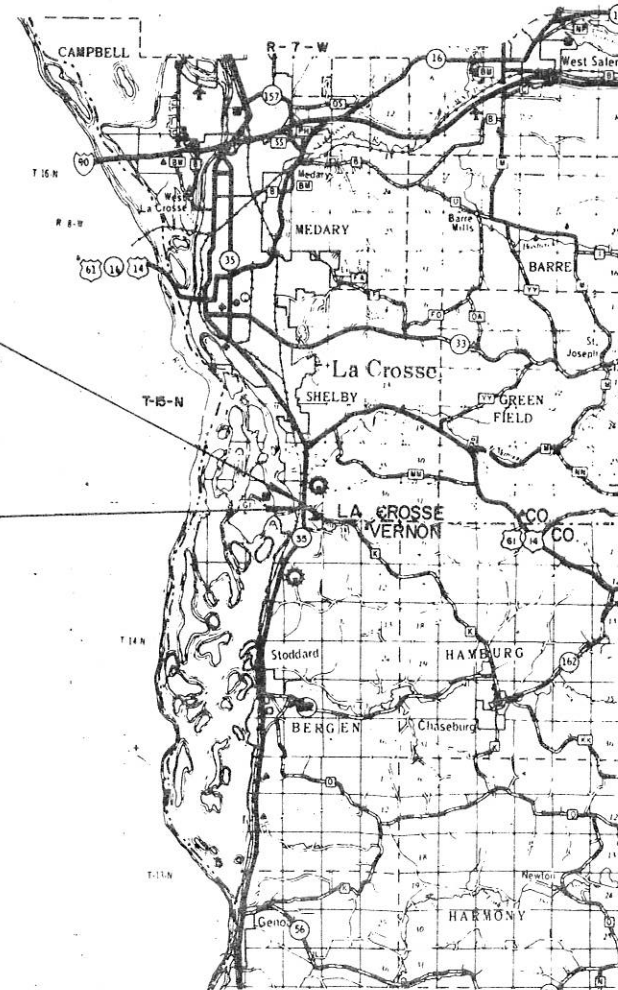
COORDINATES AND BEARINGS ON THIS PLAT ARE ORIENTED TO THE WISCONSIN COORDINATE SYSTEM SOUTH ZONE. ALL PLAT DISTANCES ARE GROUND LENGTH AND MAY BE CONVERTED TO GRID LENGTH BY MULTIPLYING THE DISTANCE BY THE GRID FACTOR PROVIDED ON THE DETAIL SHEETS.

RIGHT OF WAY MONUMENTS ARE "TYPE 2" AND ARE PLACED PRIOR TO OR AT THE TIME OF LAND TITLE TRANSFER.

RIGHT OF WAY BOUNDARIES ARE DEFINED WITH COURSES OF THE PERIMETER OF THE HIGHWAY LANDS REFERENCED TO THE U.S. PUBLIC LAND SURVEY OR OTHER SURVEYS OF PUBLIC RECORD.

END RELOCATION ORDER
S00°-15'-01"E 994.95' FROM THE CENTER OF SEC. 34, T15 N, R7 W.

BEGIN RELOCATION ORDER
N03°-59'-21"E 1040.15' FROM THE S. 1/4 COR. OF SEC. 34, T15 N, R7 W.



R/W PROJECT NUMBER 5163-07-22	SHEET NUMBER 4.0	TOTAL SHEETS 4.2
FEDERAL PROJECT NUMBER		
PLAT OF RIGHT OF WAY REQUIRED FOR SO. CO. LINE-U.S.H. 14		
S.T.H. 35		LA CROSSE CO.



TOTAL NET LENGTH OF CENTERLINE = 0.115 MI.

REVISION DATE	STATE OF WISCONSIN DEPARTMENT OF TRANSPORTATION
APPROVED:	
DATE: 3-17-88	<i>T.R. K...</i> DISTRICT TRANSPORTATION DIRECTOR
APPROVED:	
DATE: 3/23/88	<i>T.R. K...</i> STATE REAL ESTATE MANAGER FOR HWYS
U.S. DEPARTMENT OF TRANSPORTATION FEDERAL HIGHWAY ADMINISTRATION REGION 5 WISCONSIN DIVISION	
APPROVED:	
DATE:	DIVISION ADMINISTRATOR

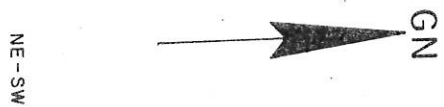
632.4 WATER ELEVATION

S.T.H. 35 LA CROSSE 3-17-88
0 50 100
0.99991970

5163-07-22

4.2

PI = 580+00.04
X = 1,682,733.426
Y = 632,426.680
I = 178°-51'-15"
Δ = 1°-08'-45"
D = 0°-15'
T = 229.16'
L = 458.31'
R = 22,918.31'



BEGIN RELOCATION ORDER
STA. 577+70.88
X = 1,682,727.993
Y = 632,197.603

END RELOCATION ORDER
STA. 583+79.10
X = 1,682,734.832
Y = 632,805.719

"BERNTSEN (OVER CORPS MARKER)"
X = 1,682,543.690
Y = 631,460.099

"NOT RECOVERED"
COMPUTED
X = 1,682,730.485
Y = 638,800.579

