

R/W PROJECT NUMBER 5163-07-21	SHEET NUMBER 4.0	TOTAL SHEETS 4.10
FEDERAL PROJECT NUMBER		
PLAT OF RIGHT OF WAY REQUIRED FOR		
SO. CO. LINE-U.S.H. 14		
S.T.H. 35	LA CROSSE CO.	

**CONVENTIONAL SIGNS AND ABBREVIATIONS
LINES & SYMBOLS**

STATE	-----	LOT & TIE	-----
COUNTY	-----	SLOPE INTERCEPTS	-----
TOWNSHIP & RANGE	-----	UNDERGROUND UTILITY	-----
SECTION	-----	IRON PIN/PIPE	•
QUARTER	-----	POWER POLE	□
SIXTEENTH	-----	TELEPHONE POLE	○
R/W CENTERLINE	-----	TELEPHONE PEDESTAL	○
NEW R/W	-----	MONUMENTED R/W POINT	○
OLD R/W	-----	NO ACCESS (TO BE ACQUIRED)	-----
PROPERTY LINE	-----	NO ACCESS (PRIOR ACQUISITION)	-----
CORPORATE LIMITS	-----	NO ACCESS (BY STATUTE)	•••••

ABBREVIATIONS

AP	ACCESS POINT	MON.	MONUMENT
AH	AHEAD		
ARC	ARC LENGTH	O.L.	OUTLOT
BLK.	BACK		
B.	BARN	PC.	POINT OF CURVATURE
BLK.	BLOCK	PI.	POINT OF INTERSECTION
		PT.	POINT OF TANGENCY
		PCC	POINT OF COMPOUND CURVATURE
		PL	PROPERTY LINE
EM.	CEMETERY		
	CENTERLINE		
CH.	CHANNEL		
CH-CH	CHANNEL CHANGE	R.	RADIUS
CT.H.	COUNTY TRUNK HIGHWAY	R	REFERENCE LINE
		R/W	RIGHT OF WAY
D	DEGREE OF CURVE	REM.	REMAINING
		RES	RESTAURANT
ET. AL.	AND OTHERS	SEC.	SECTION
EX.	EXISTING	S.S.	SERVICE STATION
		S	SHED
		S.T.H.	STATE TRUNK HIGHWAY
		STA.	STATION
FDN.	FOUNDATION	ST.	STORE
G.	GARAGE	T.	TANGENT LENGTH OF CURVE
G.L.	GOVERNMENT LOT	TAV.	TAVERN
G.N.	GRID NORTH	TEMP.	TEMPORARY
		T	TRANSIT LINE
H.	HOUSE	U.S.H.	UNITED STATES HIGHWAY
H.T.	HOUSE TRAILER		
I.H.	INTERSTATE HIGHWAY	WH.	WAREHOUSE
I.P.	IRON PIN/PIPE		
		X	EAST GRID COORDINATE
L.	LENGTH OF CURVE	Y	NORTH GRID COORDINATE
L.C.	LAND CONTRACT/LONG CHORD		
L.H.E.	LIMITED HIGHWAY EASEMENT		
L.C.B.	LONG CHORD BEARING		

NOTES

COORDINATES AND BEARINGS ON THIS PLAT ARE ORIENTED TO THE WISCONSIN COORDINATE SYSTEM SOUTH ZONE. ALL PLAT DISTANCES ARE GROUND LENGTH AND MAY BE CONVERTED TO GRID LENGTH BY MULTIPLYING THE DISTANCE BY THE GRID FACTOR PROVIDED ON THE DETAIL SHEETS.

RIGHT OF WAY MONUMENTS ARE "TYPE 2" AND ARE PLACED PRIOR TO OR AT THE TIME OF LAND TITLE TRANSFER.

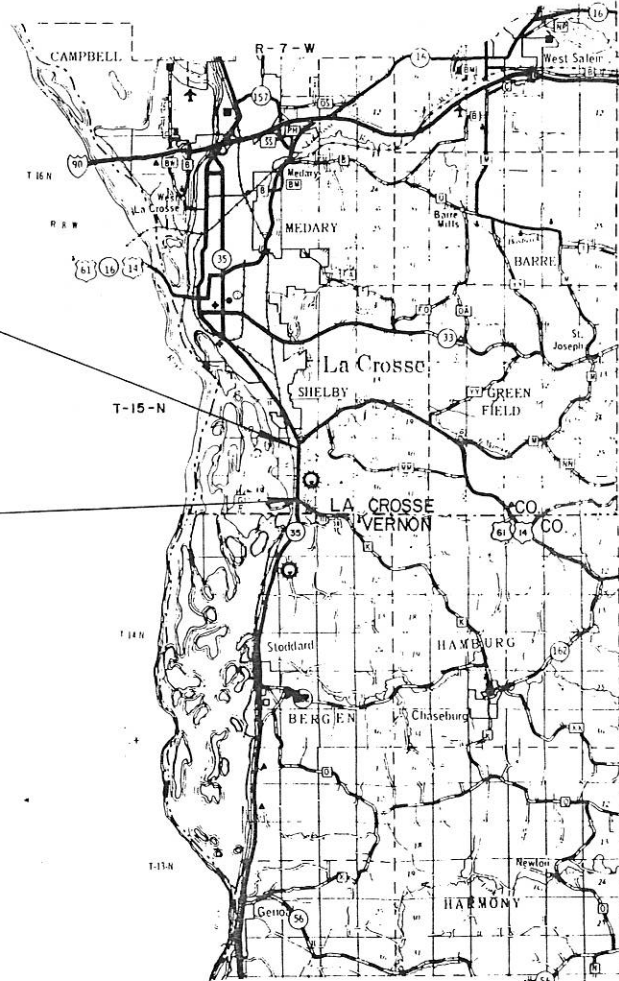
RIGHT OF WAY BOUNDARIES ARE DEFINED WITH COURSES OF THE PERIMETER OF THE HIGHWAY LANDS REFERENCED TO THE U.S. PUBLIC LAND SURVEY OR OTHER SURVEYS OF PUBLIC RECORD.

END RELOCATION ORDER

N 06°-38'-09" E 343.24' FROM
THE CENTER OF SEC. 27, T15N, R7W.

BEGIN RELOCATION ORDER

N 02°-58'-22" E 1268.72' FROM
THE SOUTH 1/4 COR. OF SEC
34, T15N, R7W.



TOTAL NET LENGTH OF CENTERLINE = 1.326

REVISION DATE	STATE OF WISCONSIN DEPARTMENT OF TRANSPORTATION
1-30-90 N.C. 8-28-91 N.C. 2-25-93	APPROVED: DATE: 10/4/89. Alan Forney DISTRICT TRANSPORTATION DIRECTOR
	U.S. DEPARTMENT OF TRANSPORTATION FEDERAL HIGHWAY ADMINISTRATION REGION 5 WISCONSIN DIVISION
	APPROVED: DATE: _____ DIVISION ADMINISTRATOR

SCHEDULE OF LANDS & INTERESTS REQUIRED

AREAS SHOWN IN THE TOTAL ACRES COLUMN MAY BE APPROXIMATE AND ARE DERIVED FROM TAX ROLLS OR OTHER AVAILABLE SOURCES AND MAY NOT INCLUDE LANDS OF THE OWNER WHICH ARE NOT CONTIGUOUS TO THE AREA TO BE ACQUIRED.

REVISION DATE
1-30-90
8-28-91
2-25-93

ROUTE COUNTY DATE
S.L.H. 35 LA CROSSE JO-4-89

R/W PROJECT NUMBER
5163-07-21
FEDERAL PROJECT NUMBER

SHEET NUMBER
4.1

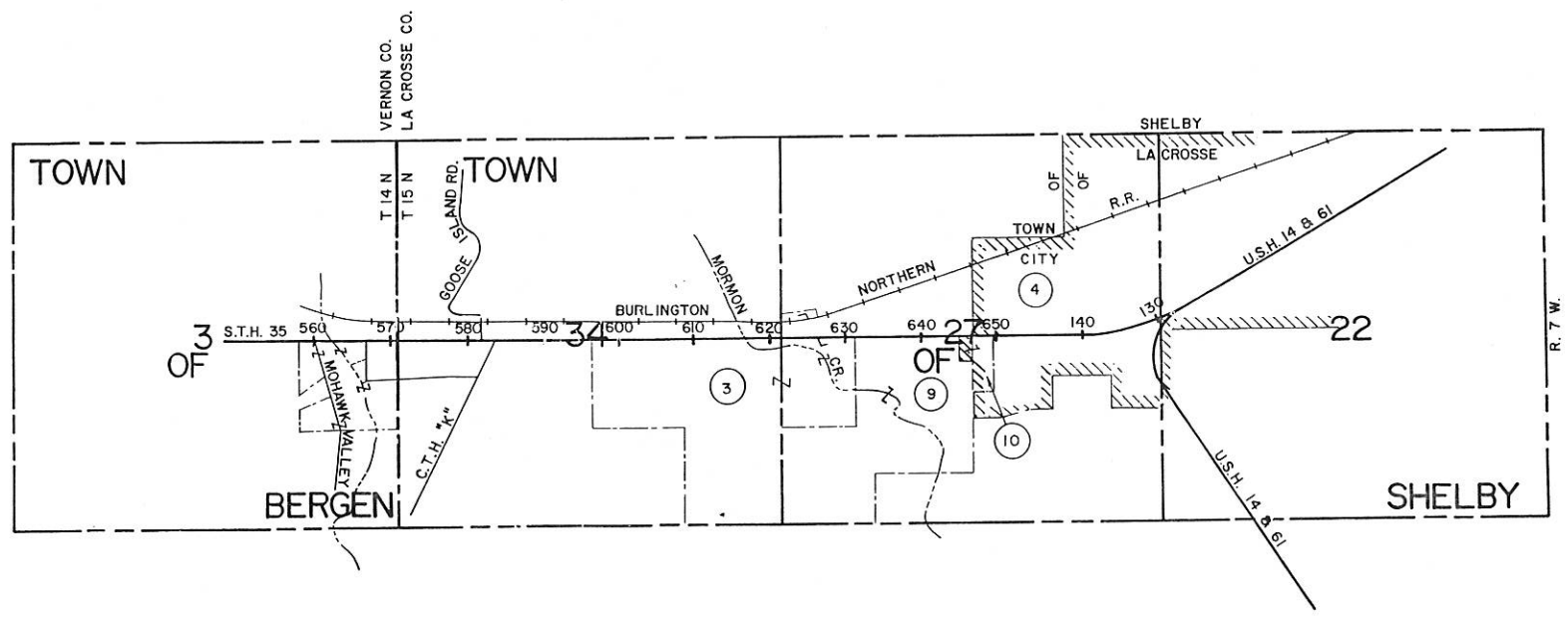
PARCEL NUMBER	SHEET NUMBER	OWNER	INTERESTS REQUIRED	TOTAL BEFORE AC./S.F.	AC./S.F. REQUIRED			TOTAL REM. AC./S.F.	L.H.E. AC./S.F.		HWY. EASE.
					NEW	EXIST.	TOTAL		PERM.	TEMP.	
1	4.5-4.6	U.S.A. (FISH & WILDLIFE)	LIMITED EASE.							5.42	
2	4.4-4.7	BURLINGTON NORTHERN R.R.	FEE		1.20		1.20				
3	4.4-4.7	ELSIE YOUNG	FEE, LIMITED EASE. & ACC. RTS.	151.00	2.79	2.28	5.07	145.93	3.38		
4	4.7-4.9	ROBERT EVANS II & EILEEN S. EVANS	FEE & ACC. RTS.	17.16	0.78		0.78	16.38			
5	4.7	BLAINE C. & EILEEN I. HOUSER	FEE	0.42	0.42		0.42	0			
6	4.4-4.7	NORTHERN STATES POWER CO. (40)	RELEASE OF RIGHTS								
7	4.3	CARL J. & ALMA H. ROCHELT	ACCESS RIGHTS								
8	4.3,4.4	LILA A. SEAGER	" "								
9	4.7-4.9	LOREN OELKE	FEE, T.L.E. & ACC. RTS.	66.28	0.77	1.39	2.16	64.12		0.19	
10	4.8-4.9	SCHOOL DISTRICT OF LA CROSSE	FEE & ACC. RTS.	8.50	0.37		0.37	8.13			

LEVELS ON - 1,2,3,4,5,6,7,8,9,10,11,12,13,14,15,16,17,18,19,20,21,22,23,24,25,26,27,28,29,30,31,32,33,34,35,36,37,38,39,40,41,42,43,44,45,46,47,48,49,50,51,52,53,54,55,56,57,58,59,60,61,62,63

DESIGN DATE
1-30-90 N.C.
8-28-91 N.C.
2-25-93

PROJECT NUMBER
S.T.H 35 LA CROSSE
DATE
10-4-89
1001 TO SCALE

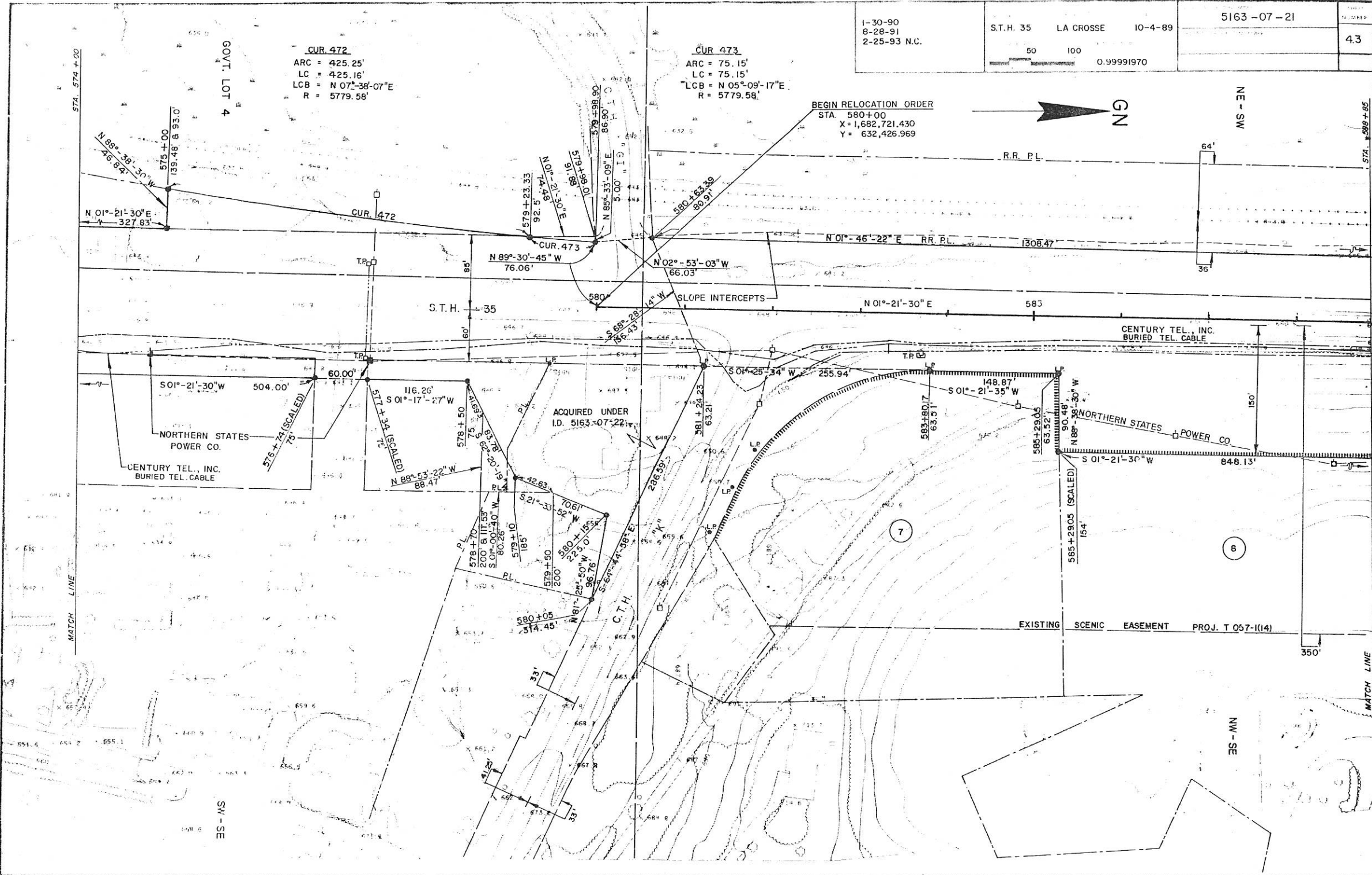
P.W. PROJECT NUMBER 5163-07-21	SHEET NUMBER
FEDERAL PROJECT NUMBER	4.2



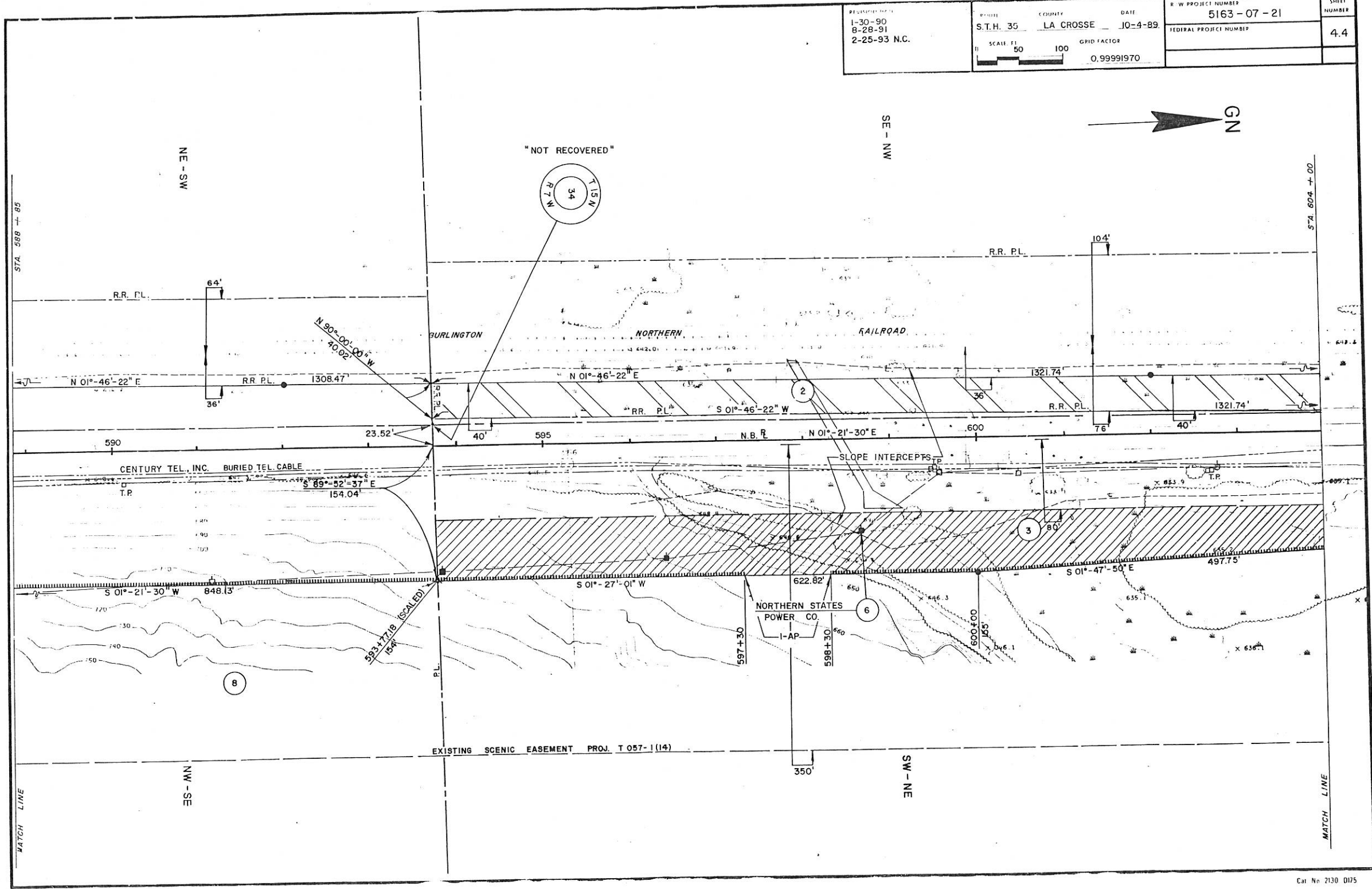
CUR. 472
 ARC = 425.25'
 LC = 425.16'
 LCB = N 07°-38'-07"E
 R = 5779.58'

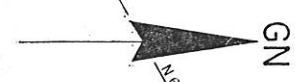
CUR. 473
 ARC = 75.15'
 LC = 75.15'
 LCB = N 05°-09'-17"E
 R = 5779.58'

BEGIN RELOCATION ORDER
 STA. 580+00
 X = 1,682,721.430
 Y = 632,426.969

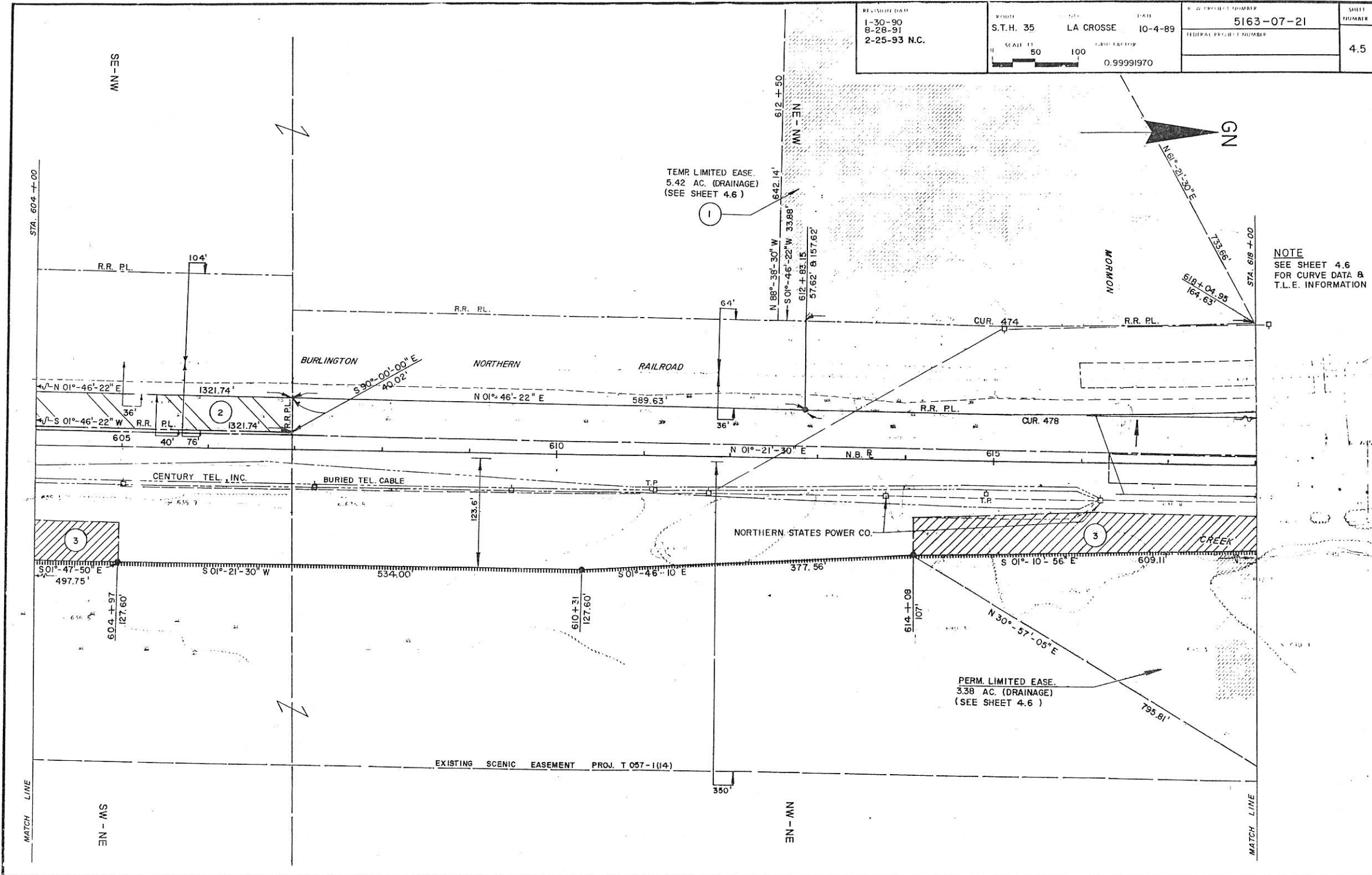


REGISTERED MAP 1-30-90 8-28-91 2-25-93 N.C.	COUNTY LA CROSSE	DATE 10-4-89	R.W. PROJECT NUMBER 5163-07-21	SHEET NUMBER 4.4
	S.T.H. 35	FEDERAL PROJECT NUMBER		
	SCALE: 1" = 50' 100' GRID FACTOR 0.99991970			





NOTE
SEE SHEET 4.6
FOR CURVE DATA &
T.L.E. INFORMATION



TEMP. LIMITED EASE.
5.42 AC. (DRAINAGE)
(SEE SHEET 4.6)

PERM. LIMITED EASE.
3.38 AC. (DRAINAGE)
(SEE SHEET 4.6)

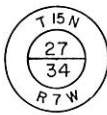
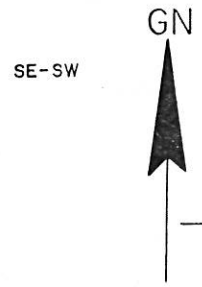
EXISTING SCENIC EASEMENT PROJ. T 057-1(14)

1-30-90
8-28-91
2-25-93 N.C.

S.T.H. 35 LA CROSSE 10-4-89
50 100
0.99991970

5163-07-21

4.6



RAILROAD SPIKE
X = 1,682, 805.327
Y = 636, 441.100

CUR. 478
ARC = 732.14'
LC = 731.60'
LCB = N 00°20'21" W
R = 5495.23

CUR. 479
ARC = 510.09'
LC = 509.91'
LCB = N 06°26'11" W
R = 5492.74

CUR. 474
ARC = 521.32'
LC = 521.12'
LCB = S 00°-35'-13" W
R = 5395.45

CUR. 475
ARC = 94.96'
LC = 94.96'
LCB = S 02°-08'-39" E
R = 5392.74

CUR. 476
ARC = 113.77'
LC = 113.76'
LCB = S 03°-15'-12" E
R = 5392.74

TEMP. LIMITED EASE
5.42 AC. (DRAINAGE)

PERM. LIMITED EASE
3.38 AC. (DRAINAGE)

612+50
612+83.15
612+83.15
57.62 @ 157.62'
614+08
614+38.12
800'
N 01°-21'-30" E
188.12'

NE-NW

N 88°-38'-30" W 642.14'

S 01°-46'-22" W 33.88'

BURIED TEL. CABLE
N 01°-21'-30" E
615

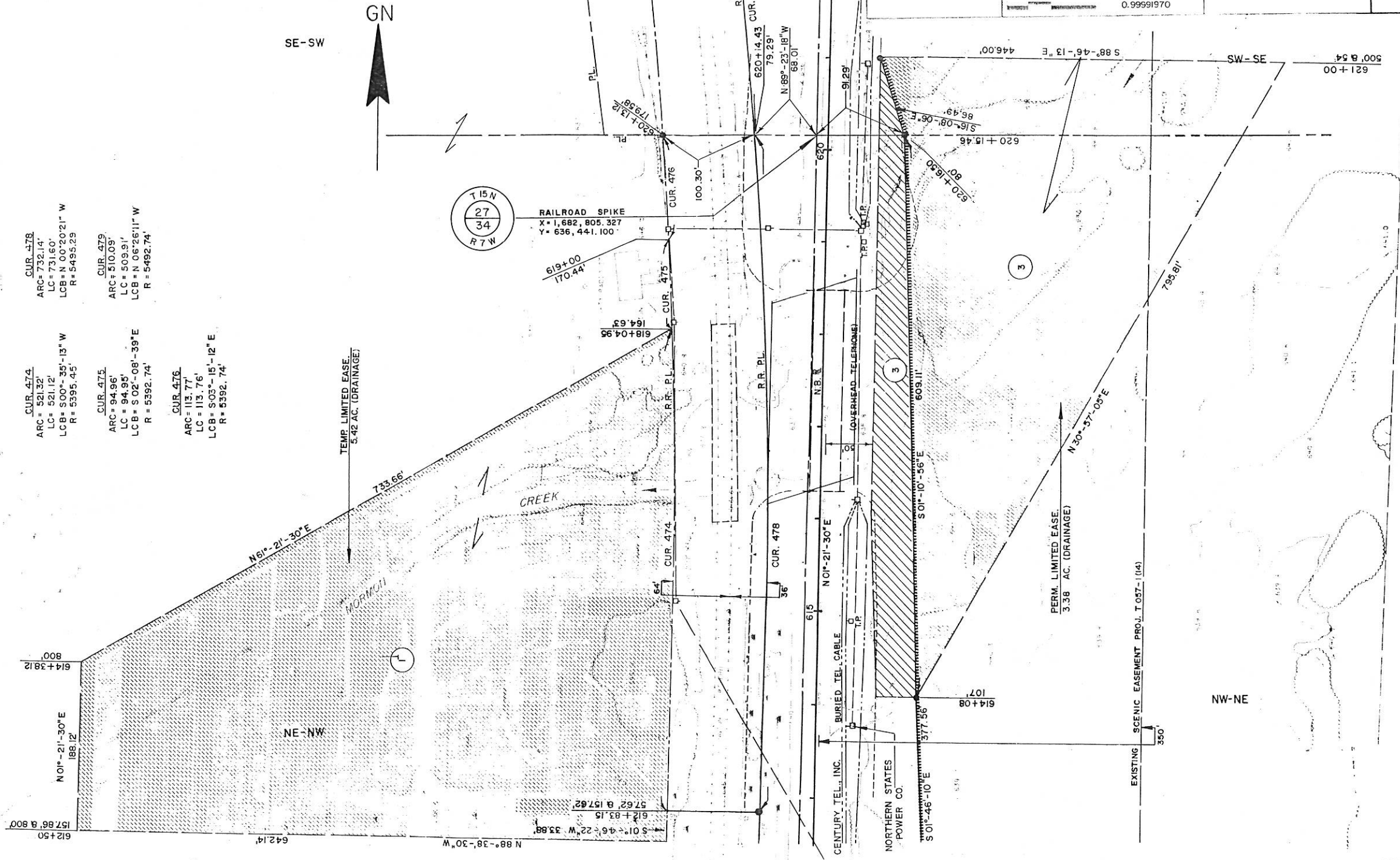
CENTURY TEL., INC.

NORTHERN STATES
POWER CO.

EXISTING SCENIC EASEMENT PROJ. T 057-104

350'

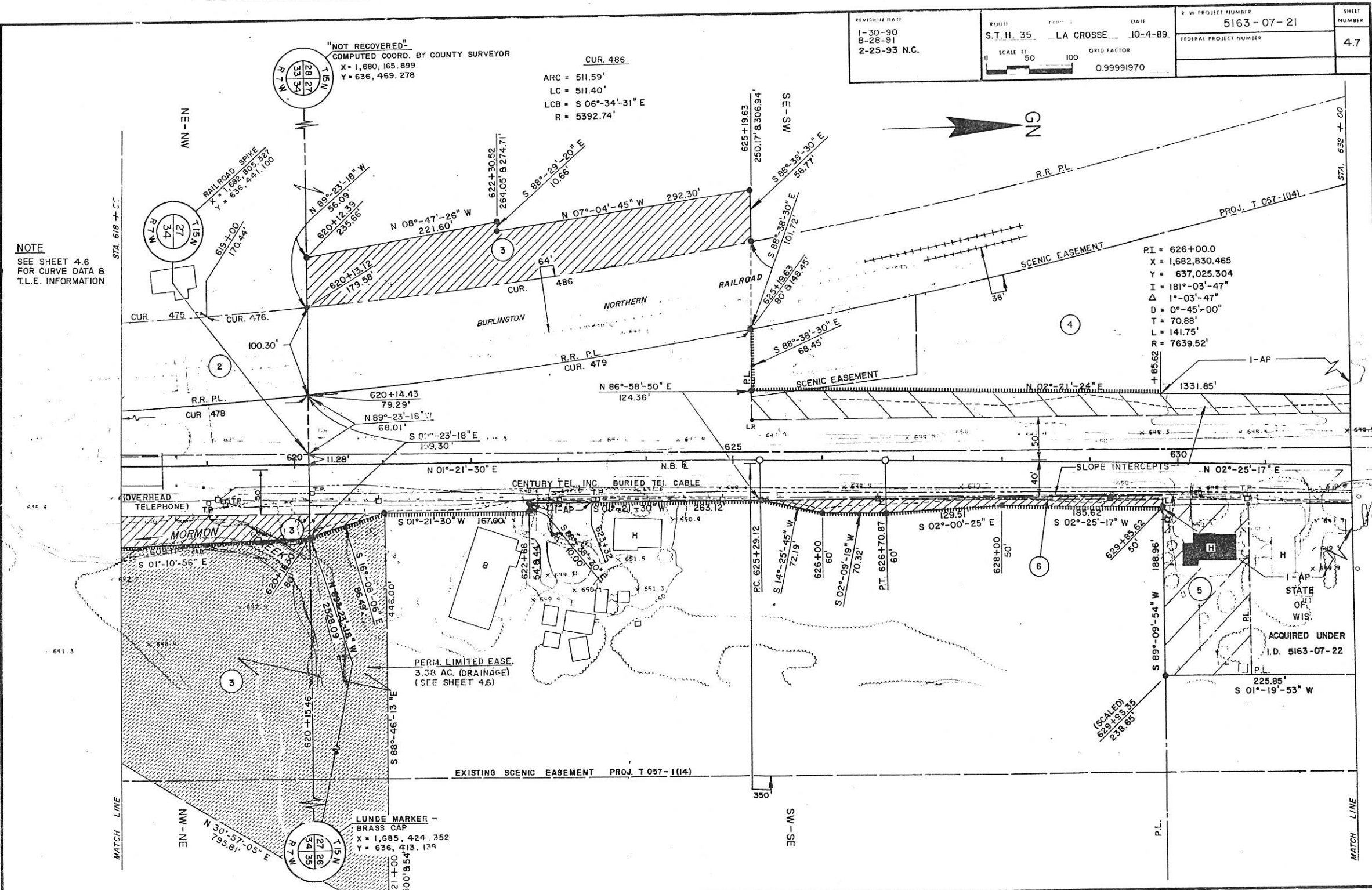
NW-NE



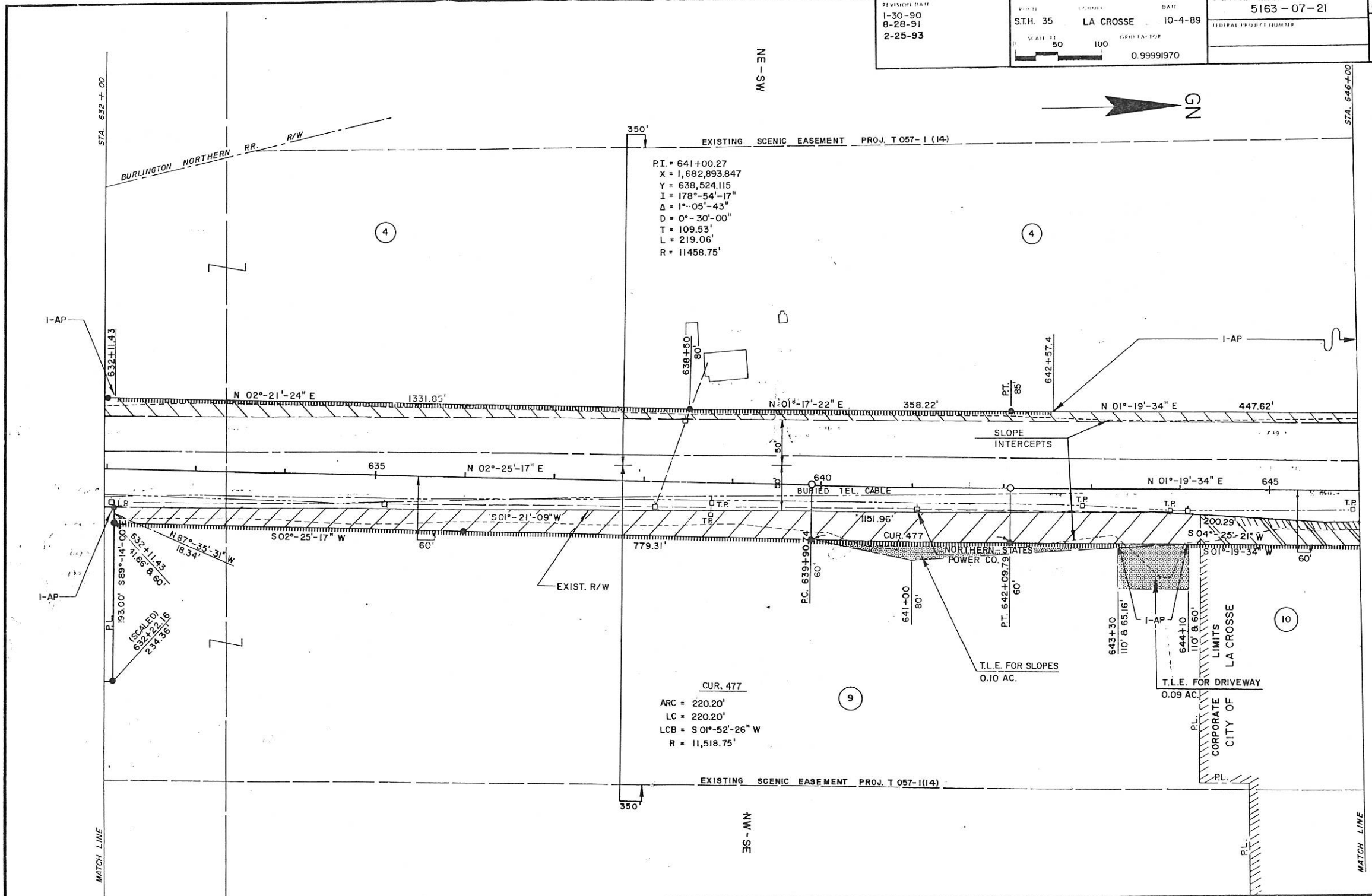
"NOT RECOVERED"
COMPUTED COORD. BY COUNTY SURVEYOR
X = 1,680, 165.899
Y = 636, 469.278

CUR. 486
ARC = 511.59'
LC = 511.40'
LCB = S 06°-34'-31" E
R = 5392.74'

NOTE
SEE SHEET 4.6
FOR CURVE DATA &
T.L.E. INFORMATION



PI = 626+00.0
X = 1,682,830.465
Y = 637,025.304
I = 181°-03'-47"
Δ = 1°-03'-47"
D = 0°-45'-00"
T = 70.88'
L = 141.75'
R = 7639.52'



P.I. = 641+00.27
 X = 1,682,893.847
 Y = 638,524.115
 I = 178°-54'-17"
 Δ = 1°-05'-43"
 D = 0°-30'-00"
 T = 109.53'
 L = 219.06'
 R = 11458.75'

CUR. 477
 ARC = 220.20'
 LC = 220.20'
 LCB = S 01°-52'-26" W
 R = 11,518.75'



HARRY L. & DELLA E. STELZIG

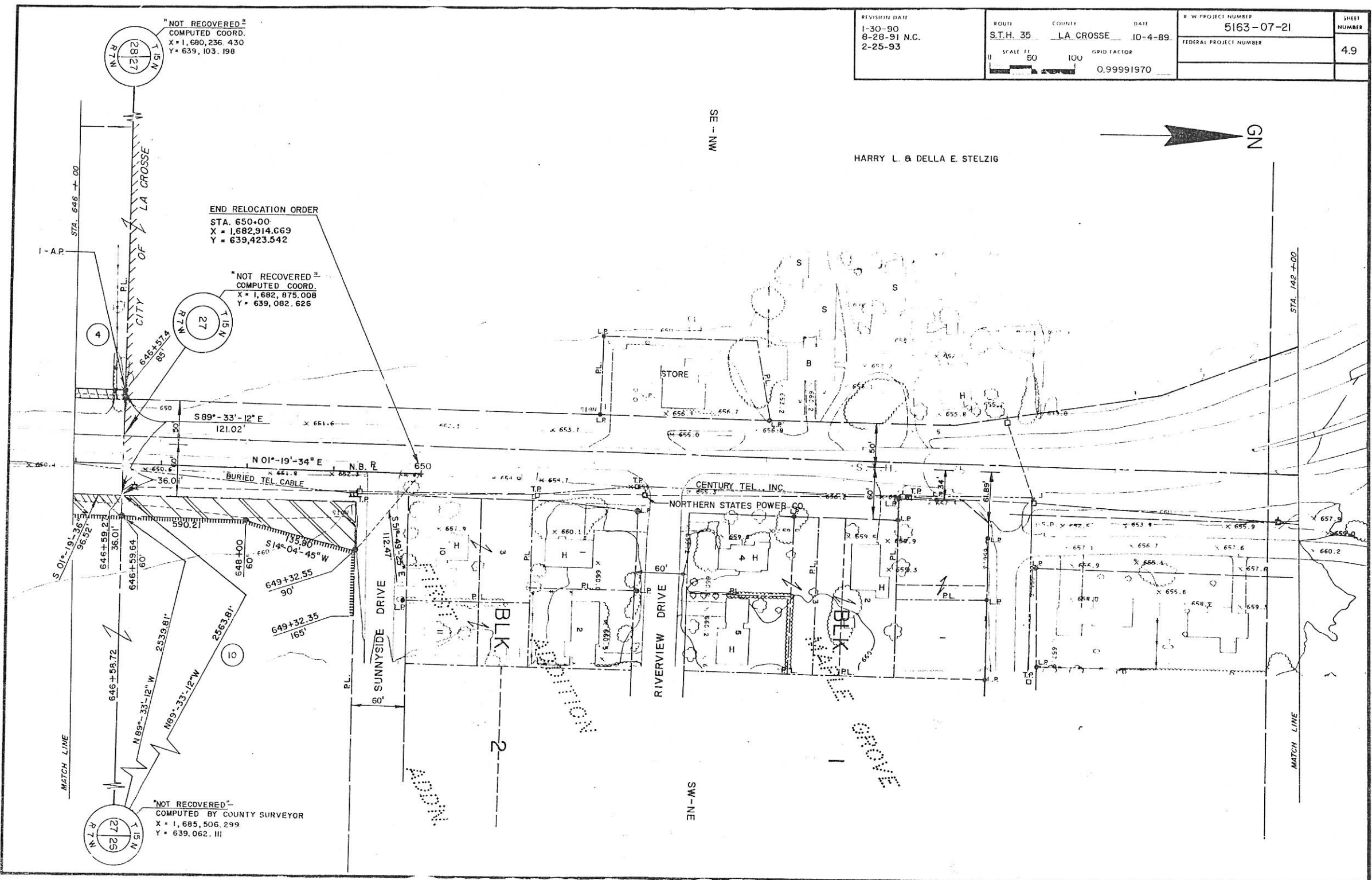
SE - NW

SW - NE

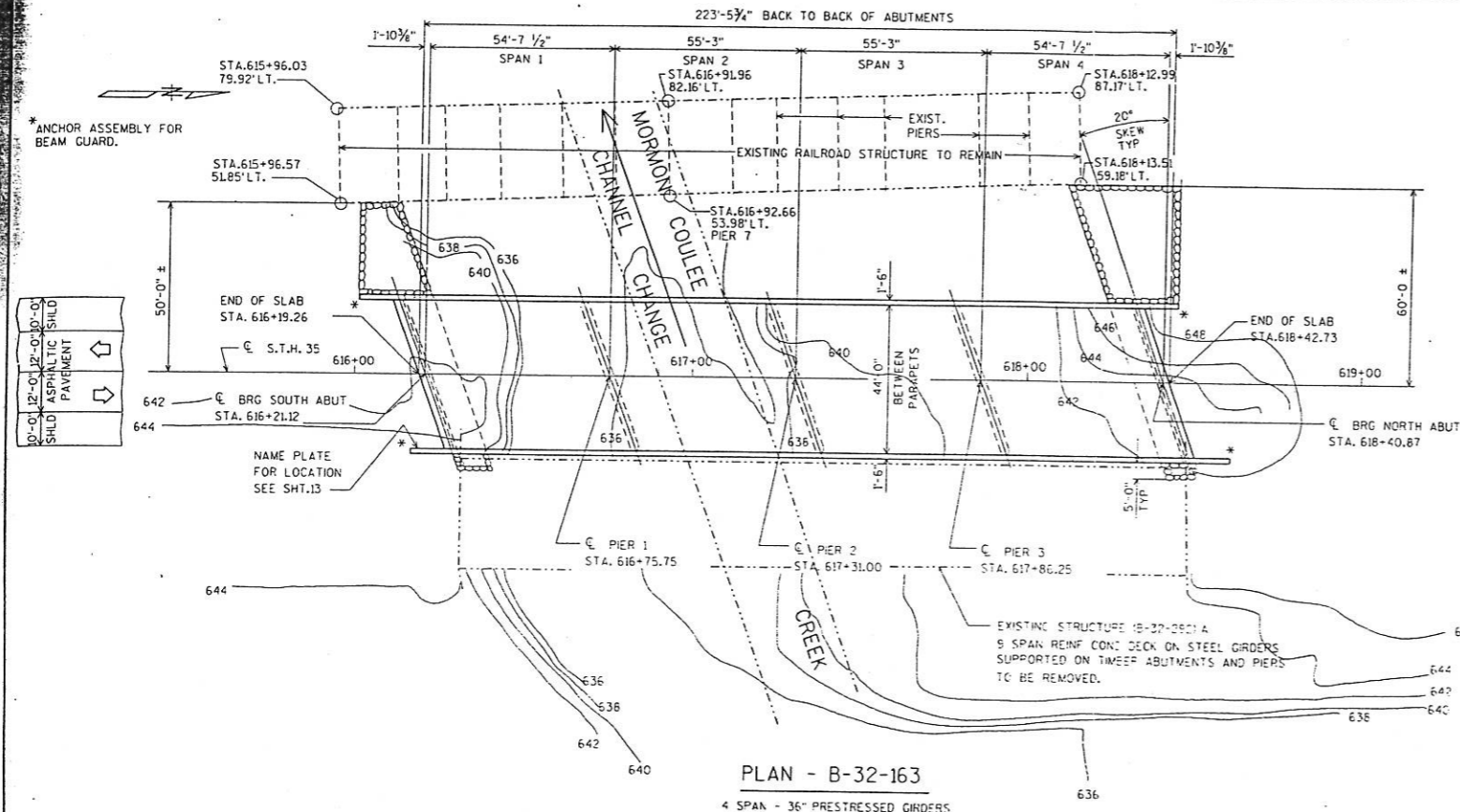
END RELOCATION ORDER
STA. 650+00
X = 1,682,914.669
Y = 639,423.542

"NOT RECOVERED"
COMPUTED COORD.
X = 1,682,875.008
Y = 639,082.626

"NOT RECOVERED"
COMPUTED BY COUNTY SURVEYOR
X = 1,685,506.299
Y = 639,062.111



STATE PROJECT NUMBER	SHEET NO.
5163-07-73	8.0



DESIGN DATA

LIVE LOAD:
DESIGN RATING: HS-20
INVENTORY RATING: HS-22
OPERATIONAL RATING: HS-43
MAXIMUM STANDARD PERMIT VEHICLE LOAD = 250 Kips.
STRUCTURE IS DESIGNED FOR A FUTURE WEARING SURFACE OF 20 POUNDS PER SQUARE FOOT.

ALLOWABLE DESIGN STRESSES:
CONCRETE MASONRY SLAB — $f'_c = 4,000$ P.S.I. ALL OTHER — $f'_c = 3,500$ P.S.I.
BAR STEEL REINFORCEMENT, GRADE 60 — $f_y = 60,000$ P.S.I.
PARAPETS AND ALL SLAB STEEL SHALL BE EPOXY COATED.
36" PRESTRESSED GIRDERS, CONCRETE MASONRY — $f'_c = 4,000$ P.S.I.
STRANDS — 1/2" ϕ WITH ULTIMATE TENSILE STRENGTH OF 270,000 P.S.I.

FOUNDATION DATA

PLACE SOUTH ABUTMENT ON 9 3/4" ϕ OIL WELL PIPE PILING DRIVEN TO BEDROCK. (DRIVEN WITH CLOSED END) EST. LENGTH=90'-0".
PLACE PIERS ON 9 3/4" ϕ OIL WELL PIPE PILING DRIVEN TO BEDROCK. (DRIVEN WITH CLOSED END) EST. LENGTH=90'-0".
PLACE NORTH ABUTMENT ON 9 3/4" ϕ OIL WELL PIPE PILING DRIVEN TO BEDROCK. (DRIVEN WITH CLOSED END) EST. LENGTH=90'-0".

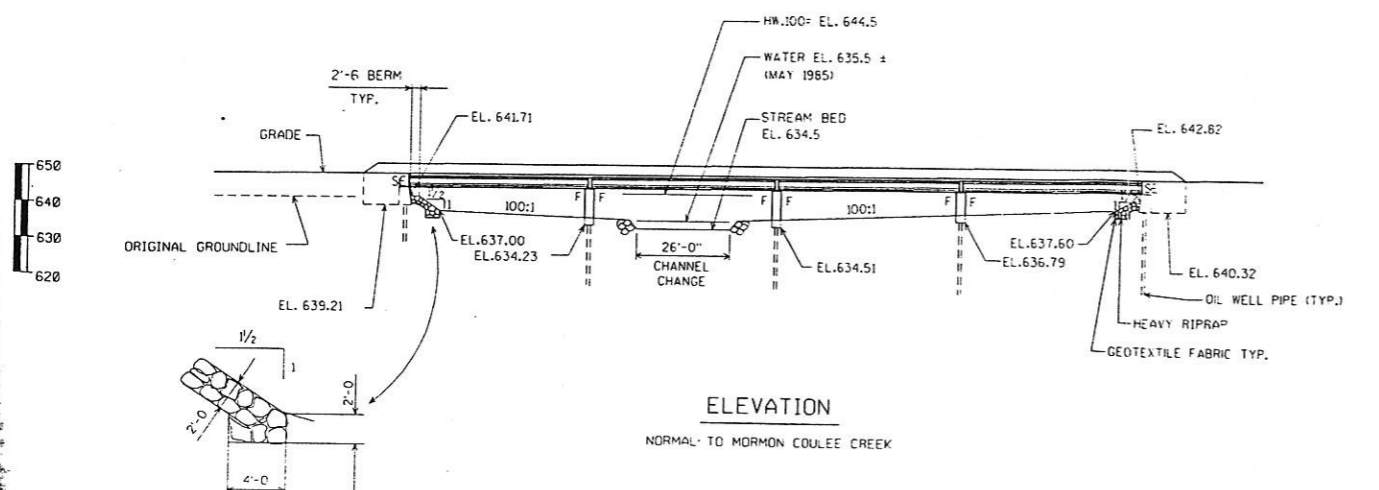
HYDRAULIC DATA

100 YEAR FREQUENCY
Q / 100=7050 C.F.S.
VEL= 6.5 F.T.S.
HW= EL. 644.5
WATERWAY AREA= 1082 SQ. FT.
DRAINAGE AREA= 35.8 SQ. MI.
OVERTOPPING RC = NA

TRAFFIC VOLUME

S.T.H. 35
A.D.T.-11,685 (2012)
R.D.S.=60 M.P.H.

- LIST OF DRAWINGS**
1. GENERAL PLAN — X83047
 2. NOTES AND QUANTITIES
 3. SUBSURFACE EXPLORATION
 4. SOUTH ABUTMENT
 5. SOUTH ABUTMENT
 6. PIERS
 7. NORTH ABUTMENT
 8. NORTH ABUTMENT
 9. SUPERSTRUCTURE
 10. SUPERSTRUCTURE DETAILS
 11. STEEL DIAPHRAGM ALTERNATE
 12. 36" PRESTRESSED GIRDER DETAILS
 13. SLOPED FACE PARAPET 'B'

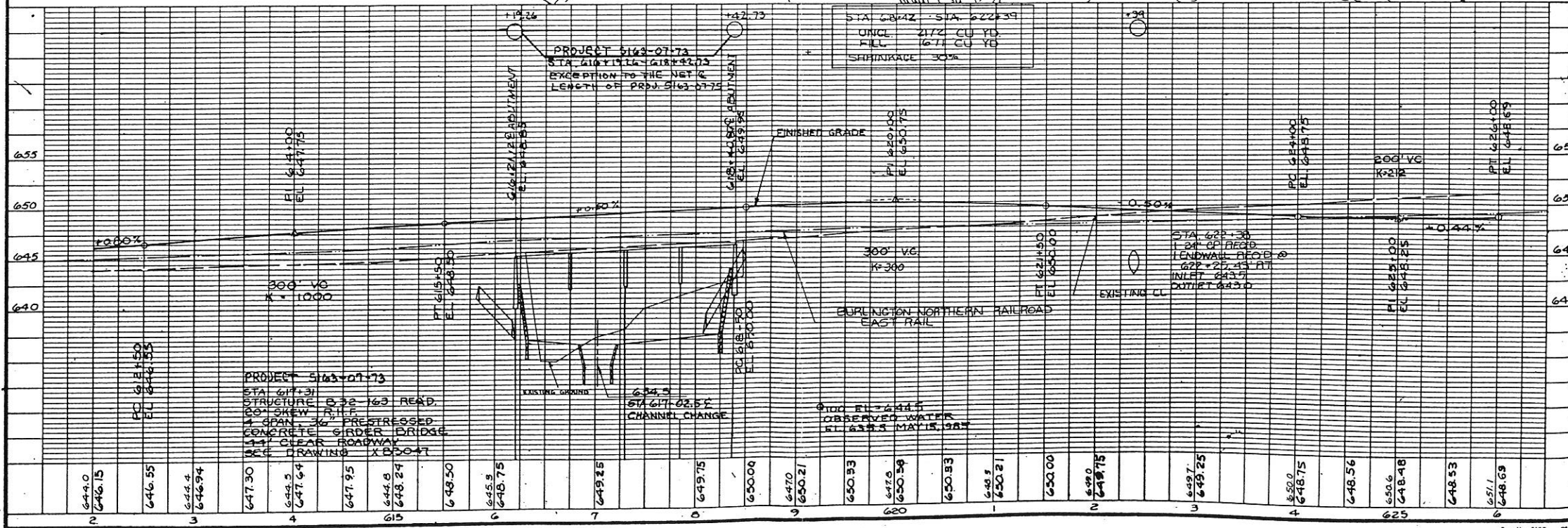
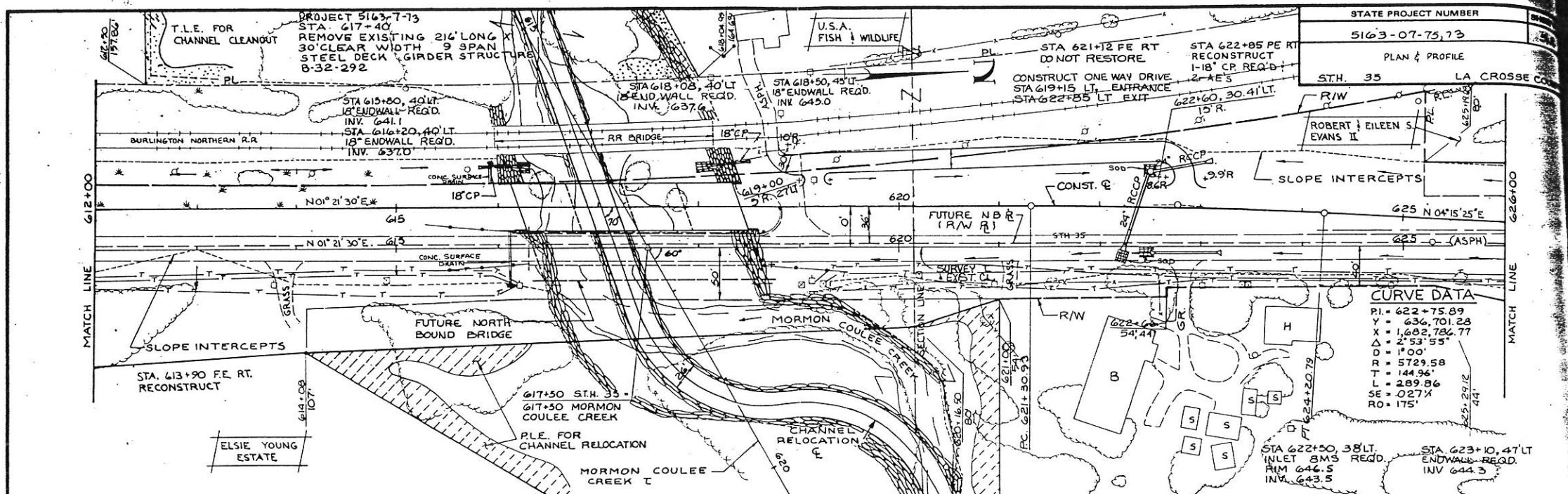


NO.	DATE	REVISION	BY
STATE OF WISCONSIN DEPARTMENT OF TRANSPORTATION DIVISION OF HIGHWAYS			
STRUCTURE B-32-163 STH. 35 OVER MORMON COULEE CREEK			
COUNTY	LA CROSSE	TOWNSHIP/VILLAGE	SHELBY
DESIGN SPEC.	AASHTO 1989	LOAD HS-20	CONST. SPEC. 1989
DESIGNED BY	DRG CK'D. DCB	DRAWN BY	DHB
APPROVED		DATE	LOY
STATE BRIDGE ENGINEER		8-20-20	
GENERAL PLAN			SHEET 1 OF 17
X83047			

BR-B32163:GP.DGN

612 50
634.50
7.25

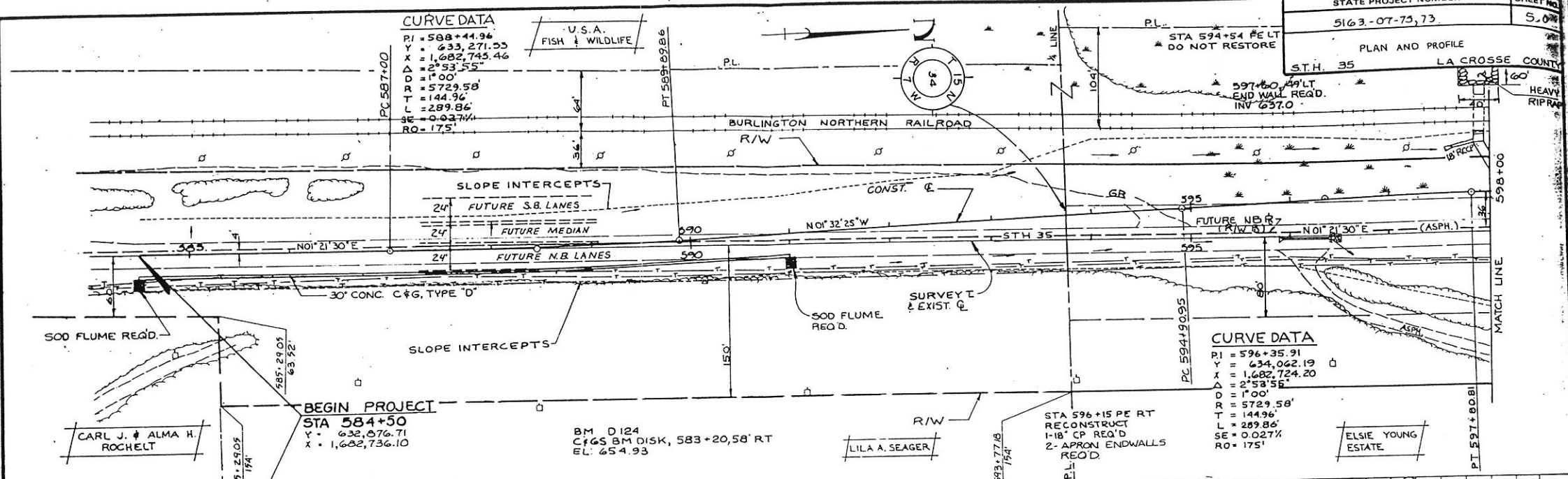
STATE PROJECT NUMBER	5163-07-75, 73
PLAN & PROFILE	
STH. 35	LA CROSSE CO.



CURVE DATA

$PI = 588+44.96$
 $Y = 633,271.55$
 $X = 1,682,745.46$
 $\Delta = 2^{\circ}53'55"$
 $R = 5729.58'$
 $T = 144.96'$
 $L = 289.86'$
 $SE = 0.0274\%$
 $RO = 175'$

U.S.A.
FISH & WILDLIFE



CURVE DATA

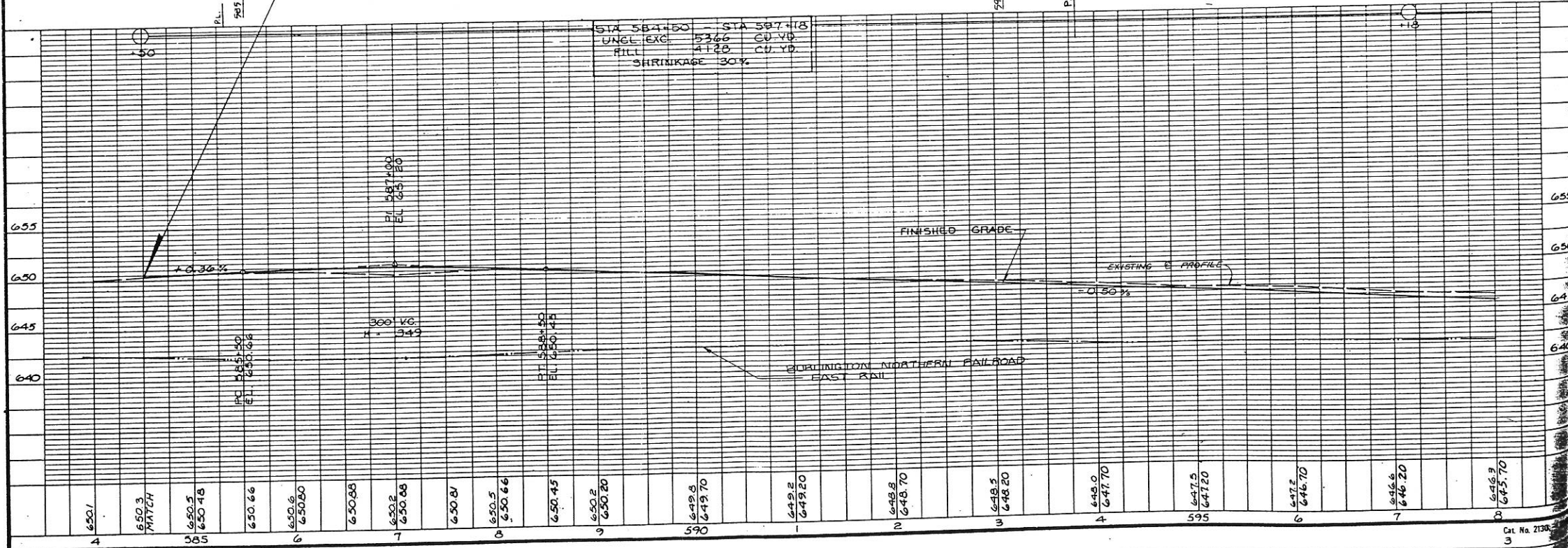
$PI = 596+35.91$
 $Y = 634,062.19$
 $X = 1,682,724.20$
 $\Delta = 2^{\circ}53'55"$
 $R = 5729.58'$
 $T = 144.96'$
 $L = 289.86'$
 $SE = 0.0274\%$
 $RO = 175'$

BEGIN PROJECT

STA 584+50
 $Y = 632,876.71$
 $X = 1,682,736.10$

BM D124
 C+G S BM DISK, 583+20.58' RT
 EL: 654.93

STA 584+50 STA 597+18
 UNCL. EXC. 5366 CU. YD.
 FILL 4125 CU. YD.
 SHRINKAGE 30%



PLAN

NO.

351