

R/W PROJECT NUMBER 7571-09-22	SHEET NUMBER 4.0	TOTAL SHEETS 2
FEDERAL PROJECT NUMBER		
PLAT OF RIGHT OF WAY REQUIRED FOR I-90-WEST SALEM		

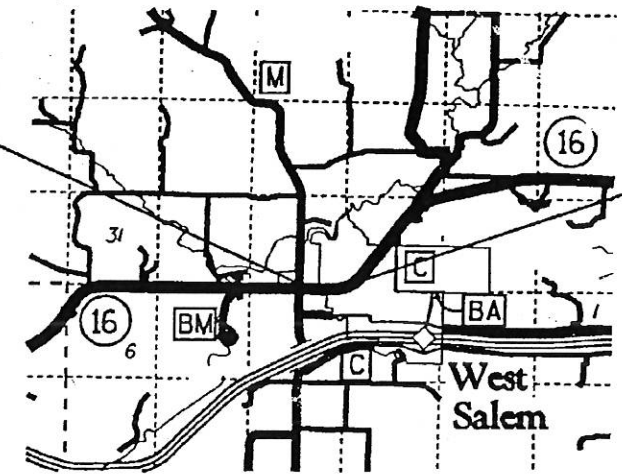
CONVENTIONAL SIGNS AND ABBREVIATIONS

----- STATE LINE	-----FO----- FIBER OPTIC	-----W----- WATER
----- COUNTY LINE	-----G----- GAS	-----T----- TELEPHONE OR TELEGRAPH
----- TOWN OR RANGE LINE	-----E----- ELECTRIC	-----TV----- CABLE TELEVISION
----- SECTION LINE	-----SS----- STORMWATER FOR COMBUSTIBLE FLUIDS	-----SAN----- SANITARY SEWER
----- QUARTER LINE	○ TELEPHONE POLE	□ POWER POLE
----- SIXTEENTH LINE	□ SERVICE PEDESTAL	⊠ TRANSMISSION TOWER AND LINE
----- PROPOSED OR NEW R/W LINE	⊗ LIGHT POLE	⊙ (Label) VALVE
----- EXISTING R/W LINE	⊕ (Label) CAUTION	⊕ (Label) STORAGE TANK
----- LOT LINE	○ (Label) SILO, MANHOLE OR WELL, ETC.	⊕ (Label) BUILDING
----- PROPERTY LINE		
////// CORPORATE LIMITS		
◆◆◆◆ NO ACCESS (By Previous Acquisition)		
NO ACCESS (By Acquisition)		
●●●● NO ACCESS (By Statutory Authority)		
----- LIMITED EASEMENT (Temporary or Permanent)		
● RIGHT OF WAY MONUMENT		
▲ NEW ALIGNMENT		
--- SLOPE INTERCEPT		
--- FENCE		
--- RAILROAD		

AC. ACRES	H. HOUSE	P.L. PROPERTY LINE
A.P. ACCESS POINT	IP. IRON PIN	P.L.E. PERMANENT LIMITED EASEMENT
AH. AHEAD	I.H. INTERSTATE HIGHWAY	R. RADIUS
BK. BACK	L. LENGTH OF CURVE	R. REFERENCE LINE
B. BARN	LC. LONG CHORD	R/W. RIGHT OF WAY
C. CENTERLINE	LCB. LONG CHORD BEARING	SEC. SECTION
C.T.H. COUNTY TRUNK HIGHWAY	MON. MONUMENT	S. SHED
D. DEGREES	P.C. POINT OF CURVATURE	S.T.H. STATE TRUNK HIGHWAY
G. GARAGE	P.I. POINT OF INTERSECTION	STA. STATION
G.N. GRID NORTH	P.T. POINT OF TANGENCY	U.S.H. UNITED STATES HIGHWAY



BEGIN RELOCATION ORDER
 S 89°-29'-51" E 921.12' FROM THE SO.
 1/4 COR. SEC. 33, T 26 N., R 6 W.
 17



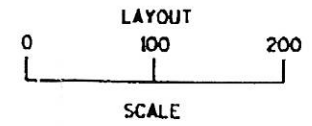
END RELOCATION ORDER
 S 89°-29'-22" W 666.33' FROM THE S.E.
 1/4 COR. SEC. 33, T 26 N., R 6 W.
 17

NOTES

COORDINATES AND BEARINGS ON THIS PLAT ARE ORIENTED TO THE WISCONSIN COORDINATE SYSTEM SOUTH ZONE. ALL PLAT DISTANCES ARE GROUND LENGTH AND MAY BE CONVERTED TO GRID LENGTH BY MULTIPLYING THE DISTANCE BY THE GRID FACTOR PROVIDED ON THE DETAIL SHEETS.

RIGHT OF WAY MONUMENTS ARE TYPE II AND ARE PLACED PRIOR TO OR AT THE TIME OF LAND TITLE TRANSFER.

RIGHT OF WAY BOUNDARIES ARE DEFINED WITH COURSES OF THE PERIMETER OF THE HIGHWAY LANDS REFERENCED TO THE U.S. PUBLIC LAND SURVEY OR OTHER SURVEYS OF PUBLIC RECORD.



TOTAL NET LENGTH OF CENTERLINE = 0.533 MI.

REVISION DATE	STATE OF WISCONSIN DEPARTMENT OF TRANSPORTATION
	APPROVED: DATE: 6-6-95 <i>[Signature]</i> DISTRICT DIRECTOR

REVISION DATE	ROUTE	COUNTY	DATE	R/W PROJECT NUMBER	SHEET NUMBER
	S.T.M. 16	LA CROSSE	6-6-95	7571-0922	4J
	SCALE, FT.	GRID FACTOR		FEDERAL PROJECT NUMBER	
	0 100 200	0.9999305			

P.I. = 1501-59.62
 Δ = 2°-52'-53"
 D = 0°-45'-00"
 T = 175.24'
 L = 346.42'
 R = 7639.44'

P.I. = 1506-60.06
 Δ = 2°-53'-48"
 D = 0°-45'-00"
 T = 175.15'
 L = 346.23'
 R = 7639.44'

DRILL HOLE IN CONCRETE
 X=1709727.507
 Y= 694099.202



BEGIN RELOCATION ORDER
 STA. = 1504-86.32
 X=1710302.196
 Y= 694085.448

END RELOCATION ORDER
 STA. = 1518-86.00
 X=1710648.352
 Y= 694089.517

①
 CHRIST LUTHERAN
 EVANGELICAL CHURCH OF
 WEST SALEM
 P.L.

②
 HAMILTON CEMETERY ASSOCIATION
 P.L.



TICN
 RAILROAD SPIKE
 X=1712377.337
 Y= 694071.973

PARCEL NUMBER	SHEET NUMBER	OWNER	INTEREST REQUIRED	TOTAL BEFORE AC./S.F.	AC./S.F. REQUIRED			TOTAL REQ. AC./S.F.	L.E. AC./S.F.		AC. SEC'D EASE.
					NEE	EXIST.	TOTAL		PERM.	TEMP.	
1	4.1	CHRIST LUTHERAN EVANGELICAL CHURCH OF WEST SALEM	FEE & ACCESS	2.50	0.07	0.25	0.32	2.18			
2	4.1	HAMILTON CEMETERY ASSOCIATION	FEE & ACCESS	2.87	0.18	0.35	0.53	2.34			

LEVELS ON 1, 2, 3, 4, 5, 6, 7, 8, 9, 10, 11, 12, 13, 14, 15, 16, 17, 18, 19, 20, 21, 22, 23, 24, 25, 26, 27, 28, 29, 30, 31, 32, 33, 34, 35, 36, 37, 38, 39, 40, 41, 42, 43, 44, 45, 46, 47, 48, 49, 50, 51, 52, 53, 54, 55, 56, 57, 58, 59, 60, 61, 62, 63

R/W PROJECT NUMBER 7571-09-22	SHEET NUMBER 4.0	TOTAL SHEETS 2
FEDERAL PROJECT NUMBER		
PLAT OF RIGHT OF WAY REQUIRED FOR I-90-WEST SALEM		

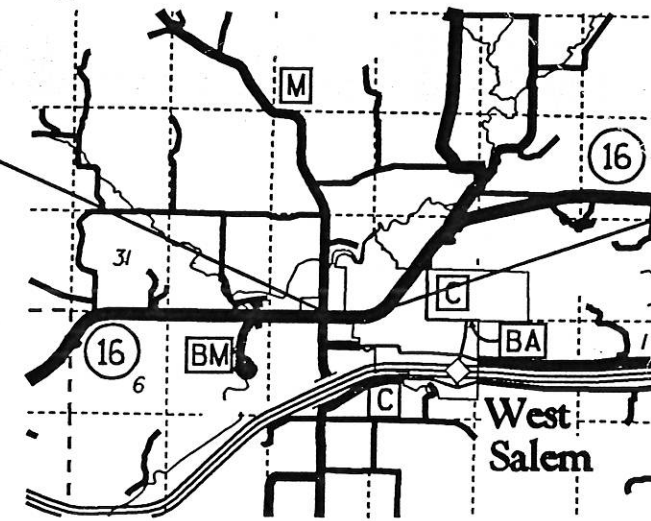
CONVENTIONAL SIGNS AND ABBREVIATIONS

--- STATE LINE	FO FIBER OPTIC
--- COUNTY LINE	W WATER
--- TOWN OR RANGE LINE	G GAS
--- SECTION LINE	T TELEPHONE OR TELEGRAPH
--- QUARTER LINE	E ELECTRIC
--- SIXTEENTH LINE	TV CABLE TELEVISION
--- PROPOSED OR NEW R/W LINE	SS STORMSEWER FOR COMBUSTIBLE FLUIDS
--- EXISTING R/W LINE	SAN SANITARY SEWER
--- LOT LINE	⊙ TELEPHONE POLE
--- PROPERTY LINE	□ POWER POLE
/// CORPORATE LIMITS	⊗ SERVICE PEDESTAL
◆ NO ACCESS (By Previous Acquisition)	⊗-⊗ TRANSMISSION TOWER AND LINE
▤ NO ACCESS (By Acquisition)	⊗ LIGHT POLE
● NO ACCESS (By Statutory Authority)	⊗ (Label) VALVE
--- LIMITED EASEMENT (Temporary or Permanent)	⚠ CAUTION
● RIGHT OF WAY MONUMENT	⊙ OR TANK STORAGE TANK
--- NEW ALIGNMENT	⊙ (Label) SILO, MANHOLE OR WELL, ETC.
--- SLOPE INTERCEPT	⊙ (Label) BUILDING
--- FENCE	
--- RAILROAD	

AC. ACRES	H. HOUSE	P.L. PROPERTY LINE
A.P. ACCESS POINT	LP. IRON PIN	P.L.E. PERMANENT LIMITED EASEMENT
AH. AHEAD	I.H. INTERSTATE HIGHWAY	R. RADIUS
BK. BACK	L. LENGTH OF CURVE	R. REFERENCE LINE
B. BARN	LC. LONG CHORD	R/W RIGHT OF WAY
C. CENTERLINE	LCB. LONG CHORD BEARING	SEC. SECTION
C.T.H. COUNTY TRUNK HIGHWAY	MON. MONUMENT	S. SHED
D. DEGREES	P.C. POINT OF CURVATURE	S.T.H. STATE TRUNK HIGHWAY
G. GARAGE	P.I. POINT OF INTERSECTION	STA. STATION
G.N. GRID NORTH	P.T. POINT OF TANGENCY	U.S.H. UNITED STATES HIGHWAY



BEGIN RELOCATION ORDER:
S 89°-29'-51" E 921.12' FROM THE SO.
1/4 COR. SEC. 33, T 16 N, R 6 W.



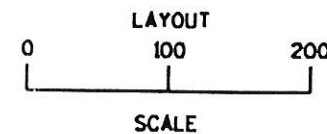
END RELOCATION ORDER:
S 89°-29'-22" W 666.33' FROM THE S.E.
1/4 COR. SEC. 33, T 16 N, R 6 W.

NOTES

COORDINATES AND BEARINGS ON THIS PLAT ARE ORIENTED TO THE WISCONSIN COORDINATE SYSTEM SOUTH ZONE. ALL PLAT DISTANCES ARE GROUND LENGTH AND MAY BE CONVERTED TO GRID LENGTH BY MULTIPLYING THE DISTANCE BY THE GRID FACTOR PROVIDED ON THE DETAIL SHEETS.

RIGHT OF WAY MONUMENTS ARE TYPE II AND ARE PLACED PRIOR TO OR AT THE TIME OF LAND TITLE TRANSFER.

RIGHT OF WAY BOUNDARIES ARE DEFINED WITH COURSES OF THE PERIMETER OF THE HIGHWAY LANDS REFERENCED TO THE U.S. PUBLIC LAND SURVEY OR OTHER SURVEYS OF PUBLIC RECORD.



TOTAL NET LENGTH OF CENTERLINE = 0.553 MI.

REVISION DATE	STATE OF WISCONSIN DEPARTMENT OF TRANSPORTATION
APPROVED:	
DATE: 6-6-95	<i>Col. J. J. ...</i> DISTRICT DIRECTOR

REVISION DATE	ROUTE	COUNTY	DATE	R/W PROJECT NUMBER	SHEET NUMBER
	S.T.M. 16	LA CROSSE	6-6-95	7571-09-21	4J
	SCALE, FT.	GRID FACTOR		FEDERAL PROJECT NUMBER	
	0 100 200	0.9999305			

P.I. = 1501-59.62
 Δ = 2°-52'-53"
 D = 0°-45'-00"
 T = 173.24'
 L = 546.42'
 R = 7639.44'

P.I. = 1506-60.06
 Δ = 2°-55'-48"
 D = 0°-45'-00"
 T = 173.15'
 L = 546.23'
 R = 7639.44'

DRILL HOLE IN CONCRETE
 X = 1709727.507
 Y = 694099.202



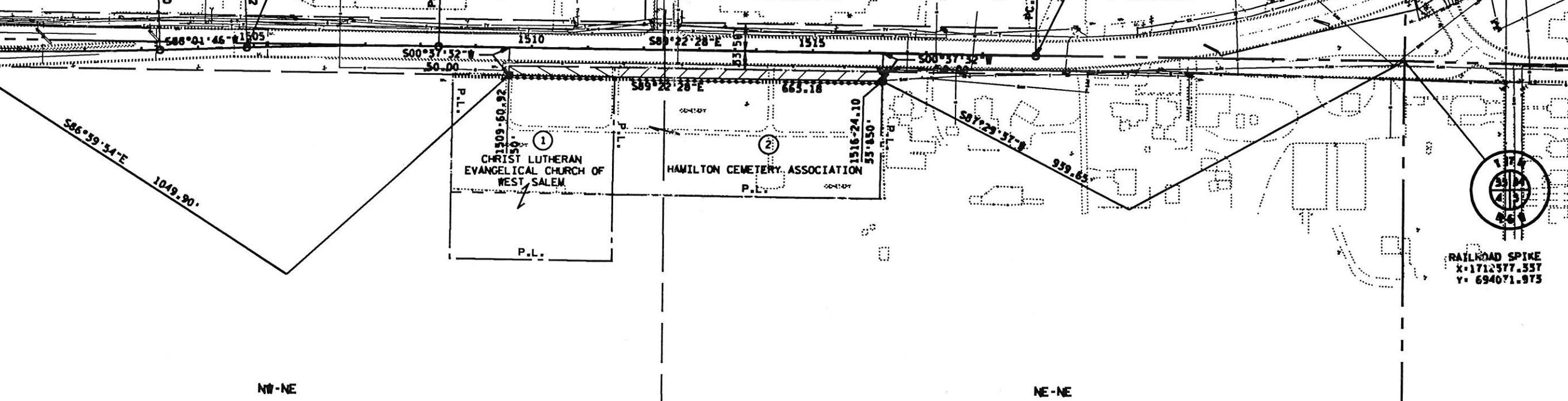
BEGIN RELOCATION ORDER

STA. = 1504-86.92
 X = 1710302.196
 Y = 694085.448

END RELOCATION ORDER

STA. = 1518-96.00
 X = 1710648.552
 Y = 694089.517

LEVELS ON - 1.2, 3.1, 3.5, 4.1, 4.5, 5.1, 5.5, 6.1, 6.5, 7.1, 7.5, 8.1, 8.5, 9.1, 9.5, 10.1, 10.5, 11.1, 11.5, 12.1, 12.5, 13.1, 13.5, 14.1, 14.5, 15.1, 15.5, 16.1, 16.5, 17.1, 17.5, 18.1, 18.5, 19.1, 19.5, 20.1, 20.5, 21.1, 21.5, 22.1, 22.5, 23.1, 23.5, 24.1, 24.5, 25.1, 25.5, 26.1, 26.5, 27.1, 27.5, 28.1, 28.5, 29.1, 29.5, 30.1, 30.5, 31.1, 31.5, 32.1, 32.5, 33.1, 33.5, 34.1, 34.5, 35.1, 35.5, 36.1, 36.5, 37.1, 37.5, 38.1, 38.5, 39.1, 39.5, 40.1, 40.5, 41.1, 41.5, 42.1, 42.5, 43.1, 43.5, 44.1, 44.5, 45.1, 45.5, 46.1, 46.5, 47.1, 47.5, 48.1, 48.5, 49.1, 49.5, 50.1, 50.5, 51.1, 51.5, 52.1, 52.5, 53.1, 53.5, 54.1, 54.5, 55.1, 55.5, 56.1, 56.5, 57.1, 57.5, 58.1, 58.5, 59.1, 59.5, 60.1, 60.5, 61.1, 61.5, 62.1, 62.5



RAILROAD SPIKE
 X = 1712377.337
 Y = 694071.973

PARCEL NUMBER	SHEET NUMBER	OWNER	INTEREST REQUIRED	TOTAL BEFORE AC./S.F.	AC./S.F. REQUIRED			TOTAL REM. AC./S.F.	L.E. AC./S.F.		AC. SCENIC EASE.
					NEW	EXIST.	TOTAL		PERM.	TEMP.	
1	4.1	CHRIST LUTHERAN EVANGELICAL CHURCH OF WEST SALEM	FEE & ACCESS	2.50	0.07	0.25	0.32	2.18	—	—	—
2	4.1	HAMILTON CEMETERY ASSOCIATION	FEE & ACCESS	2.87	0.18	0.35	0.53	2.34	—	—	—