

R/W PROJECT NUMBER 7190-04-21	SHEET NUMBER 4.01	TOTAL SHEETS 7
FEDERAL PROJECT NUMBER		
PLAT OF RIGHT-OF-WAY REQUIRED FOR 2ND AVE. CITY OF ONALASKA OAK FOREST DRIVE INTERSECTION		
STH 35		LACROSSE COUNTY
CONSTRUCTION PROJECT NUMBER 7190-04-71		

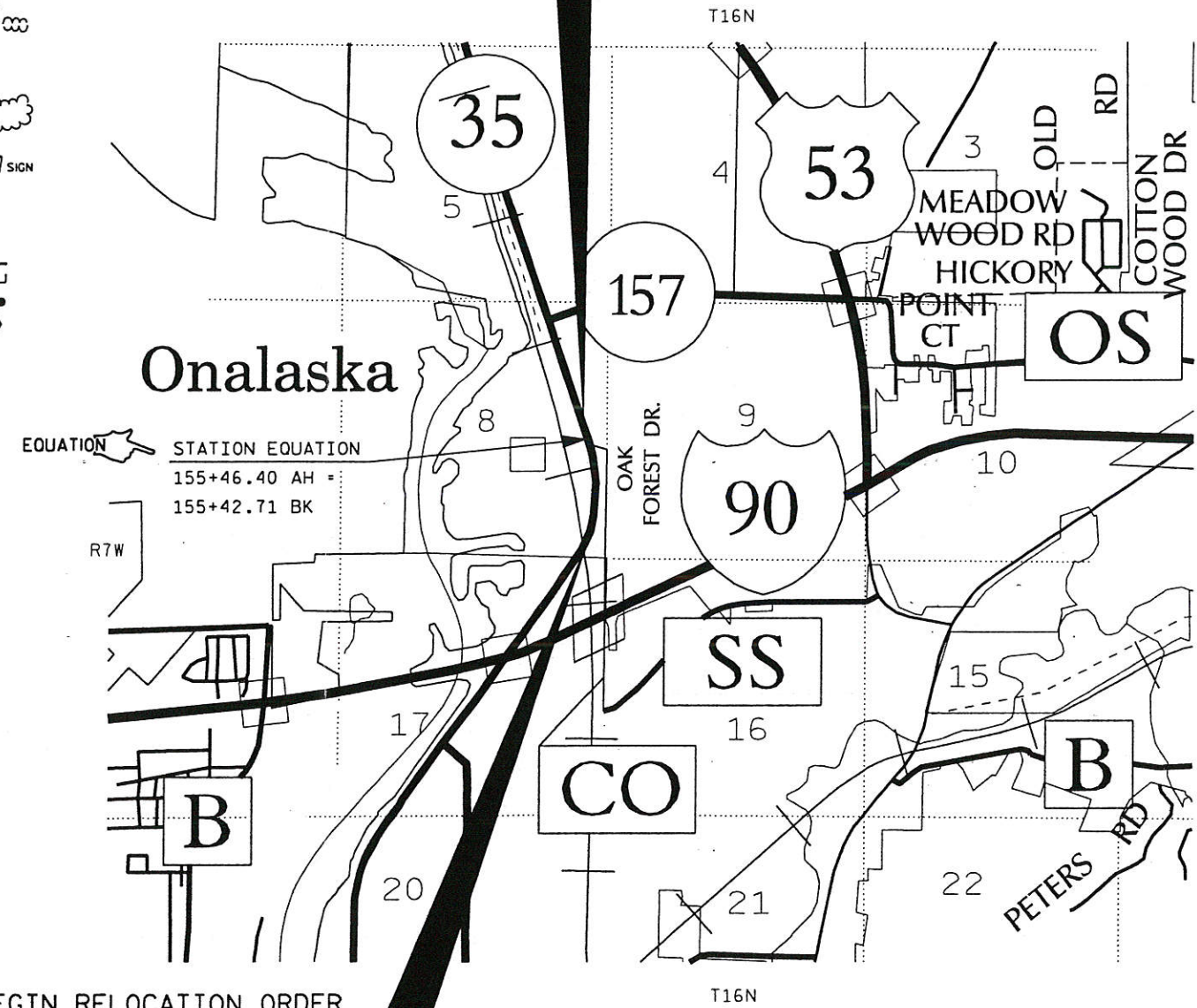
CONVENTIONAL SIGNS AND ABBREVIATIONS

STATE LINE	---	SECTION CORNER		FOUNDATION OR RUIN BUILDING	
COUNTY LINE	---	NOTATION FOR COMBUSTIBLE FLUIDS		CEMETERY	
TOWNSHIP AND RANGE LINES	---	BRIDGE		R/W MONUMENT	
SECTION LINE	---	STREAM OR RIVER		NON-MONUMENTED R/W POINT	
QUARTER LINE	---	LAKE		IRON PIN	
SIXTEENTH LINE	---	CULVERT (BOX, PIPE OR CATTLE PASS)		VALVE	
NEW REFERENCE LINE	---	RAIL LINE		WINDMILL	
NEW R/W LINE	---	SIGN		SILO, MANHOLE, VENT, SEPTIC VENT, WELL, ETC.	
EXISTING R/W LINE	---	ENCROACHING SIGN		GAS PUMPS	
PROPERTY LINE	---	POWER POLE		BUSHES	
CORPORATE LIMITS	---	TELEPHONE POLE		TREES (DECIDUOUS)	
LOT, TIE AND OTHER MINOR LINES	---	NO ACCESS (BY ACQUISITION)		TREES (CONIFEROUS)	
SLOPE INTERCEPTS	---	NO ACCESS (BY STATUTORY AUTHORITY)		WOODS	
UNDERGROUND FACILITY (GAS, TELEPHONE, ELECTRIC, ETC.)	---	NO ACCESS (BY PREVIOUS PROJECT)		ENCROACHING SIGN	
FENCE	---	TELEPHONE CABLE MARKER			
TEMPORARY LIMITED EASEMENT	---				
PERMANENT LIMITED EASEMENT	---				
BEAM GUARD	---				
TRANSMISSION STRUCTURE AND LINE	---				
PEDESTAL	---				
NOTATION FOR 69KV ELECTRICAL LINE	---				
BUILDING TO BE ACQUIRED	---				
PRIVATE DRIVE	PD	STORM SEWER	SS		
ACRES	AC	LONG CHORD BEARING	LCB		
AHEAD	AH	MONUMENT	MON		
AND OTHERS	ET AL	PARKER-KALON FASTENER	PK		
BACK	BK	PROPERTY LINE	PL		
BARN	B	RADIUS	R		
CENTERLINE	C	RIGHT OF WAY	R/W		
CENTRAL ANGLE	CA	SECTION	SEC		
CONCRETE	CONC	SHED	S		
CORNER	COR	SQUARE FEET	S.F.		
GARAGE	G	STATION	STA		
HOUSE	H	TANGENT	T		
LENGTH	L	TEMPORARY LIMITED EASEMENT	TLE		
LONG CHORD	LC	TRANSIT LINE	T		
OVERHEAD UTILITIES	OHU	OVERHEAD ELECTRIC	OHE		
FORCE MAIN	FM	SANITARY SEWER	SAN		
ACCESS RIGHTS	AR				



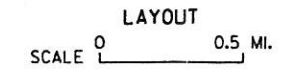
END RELOCATION ORDER

STA. 156+00
551.53' WEST OF AND 219.93' NORTH OF THE
EAST 1/4 CORNER, SECTION 8, T16N, R7W.



BEGIN RELOCATION ORDER

STA. 149+50
74.74' WEST OF AND 1179.20' SOUTH OF THE
EAST 1/4 CORNER OF SECTION 8, T16N, R7W.



TOTAL NET LENGTH OF CENTERLINE = 0.1224 MI.



NOTES

COORDINATES AND BEARINGS ON THIS PLAT ARE ORIENTED TO THE WISCONSIN COUNTY COORDINATE SYSTEM, LACROSSE COUNTY ZONE, NAD 83 (1991) ADJUSTMENT. THE COORDINATES SHOWN ARE GRID COORDINATES AND ARE TO BE USED AS GRID OR GROUND VALUES ON THIS PLAT.

RIGHT-OF-WAY MONUMENTS ARE TYPE 2 AND WILL BE PLACED PRIOR TO THE COMPLETION OF THE PROJECT.

RIGHT-OF-WAY BOUNDARIES ARE DEFINED WITH COURSES OF THE PERIMETER OF THE HIGHWAY LANDS REFERENCED TO THE U.S. PUBLIC LAND SURVEY SYSTEM OR OTHER SURVEYS OF PUBLIC RECORD.



I HEREBY CERTIFY THAT THIS PLAT WAS MADE FOR THE WISCONSIN DEPARTMENT OF TRANSPORTATION AND IS CORRECT TO THE BEST OF MY KNOWLEDGE AND BELIEF.



August 1, 2005

REVISION DATE:
AUGUST 1, 2005

APPROVED BY
CITY OF ONALASKA

DATE: *R. J. - 8-17-2005*
CITY REPRESENTATIVE SIGNATURE

E

SCHEDULE OF LANDS & INTERESTS REQUIRED

AREAS SHOWN IN THE TOTAL S.F. COLUMN MAY BE APPROXIMATE AND ARE DERIVED FROM TAX ROLLS OR OTHER AVAILABLE SOURCES AND MAY NOT INCLUDE LANDS OF THE OWNER WHICH ARE NOT CONTIGUOUS TO THE AREA TO BE ACQUIRED.

AREAS SHOWN IN THE TOTAL ACRES COLUMN MAY BE APPROXIMATE AND ARE DERIVED FROM TAX ROLLS OR OTHER AVAILABLE SOURCES AND MAY NOT INCLUDE LANDS OF THE OWNER WHICH ARE NOT CONTIGUOUS TO THE AREA TO BE ACQUIRED.

SCHEDULE OF LANDS & INTERESTS REQUIRED

PARCEL NUMBER	SHEET NUMBER	OWNER (S)	INTEREST REQUIRED	TOTAL S.F.	R/W S.F. REQUIRED			TOTAL S.F.REM.	TLE S.F.
					NEW	EXISTING	TOTAL		
1	4.04	HRZ PARTNERSHIP	FEE, TLE	44867	1879	---	1879	42988	1723
2	4.04	LACROSSE COUNTY	FEE, TLE	11761	6237	---	6237	5524	2457
3	4.04	CITY OF ONALASKA	FEE	114184	168	---	168	114016	---
4	4.04,4.05,4.07	VIRGINIA B. MANNSTAD	FEE, TLE	41033	11168	---	11168	29865	5891
5	4.04,4.05	JAE MOBILE HOME PARKS, LLC	FEE, TLE	174676	4403	---	4403	170273	2844
6	4.04,4.05	CITY OF ONALASKA	FEE	INDETERMINANT	10754	---	10754	INDETERMINANT	---
7	4.04,4.05	STATE OF WISCONSIN - DEPARTMENT OF NATURAL RESOURCES	FEE, TLE	30492	5003	---	5003	25489	2374
8	4.04,4.06	SCHOOL DISTRICT OF ONALASKA	TLE	740520	---	---	---	740520	6912
9	4.04-4.06	CITY OF ONALASKA	FEE	178160	6830	---	6830	171330	---
10	4.07	KINNE HOLDINGS, LLC	FEE, TLE	38333	292	---	292	38041	2111
31	4.04-4.07	CITY OF ONALASKA WATER & SEWER UTILITY	RELEASE OF RIGHTS						
34	4.04,4.05	CENTURYTEL	RELEASE OF RIGHTS						
35	4.04,4.05	XCEL ENERGY	RELEASE OF RIGHTS						
36	4.04	CHARTER COMMUNICATIONS	RELEASE OF RIGHTS						

REVISION DATE
AUGUST 1,2005

DATE MAY 31, 2005

SCALE, FEET



HWY: STH 35

COUNTY: LACROSSE

STATE R/W PROJECT NUMBER 7190-04-21

CONSTRUCTION PROJECT NUMBER

PLAT SHEET NO: 4.02

PS&E SHEET

E

CITY
SE-NE
8-16-7

OF
ONALASKA
SW-NW
9-16-7

4

4

END RELOCATION ORDER

STA. 156+00
Y = 154780.172
N = 450646.503

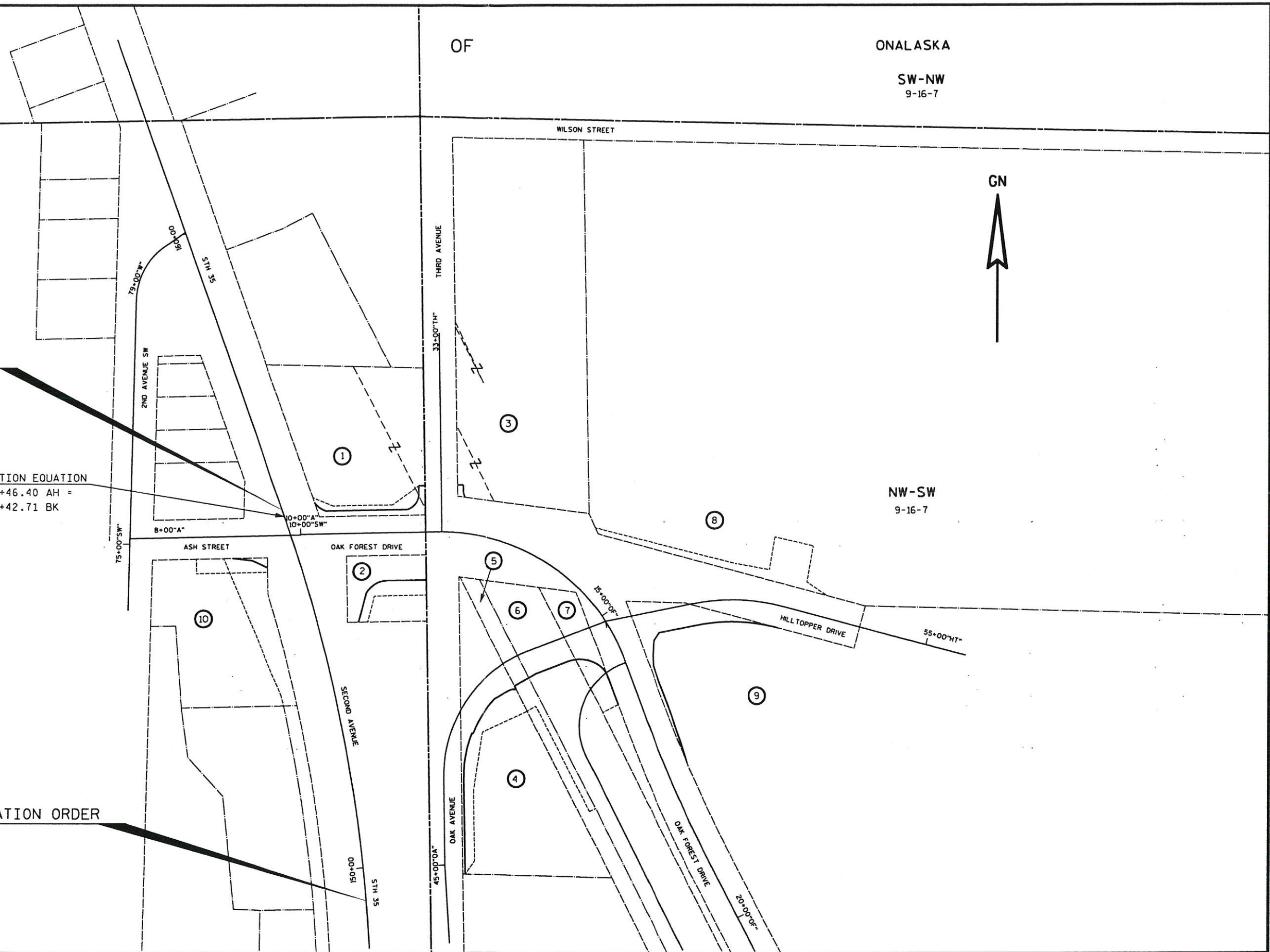
EQUATION

STATION EQUATION
155+46.40 AH =
155+42.71 BK

NE-SE
8-16-7

BEGIN RELOCATION ORDER

STA. 149+50
Y = 154152.496
N = 450791.688



REVISION DATE AUGUST 1, 200	DATE MAY 31, 2005	NOT TO SCALE	HWY: STH 35	STATE R/W PROJECT NUMBER 7190-04-21	PLAT SHEET NO: 4.03
			COUNTY: LACROSSE	CONSTRUCTION PROJECT NUMBER	PS&E SHEET

E

CITY



LUNDE MON. Y=155331.701 X=450866.431

ASSESSOR'S PLAT OF THE CITY OF ONALASKA OUTLOT 112

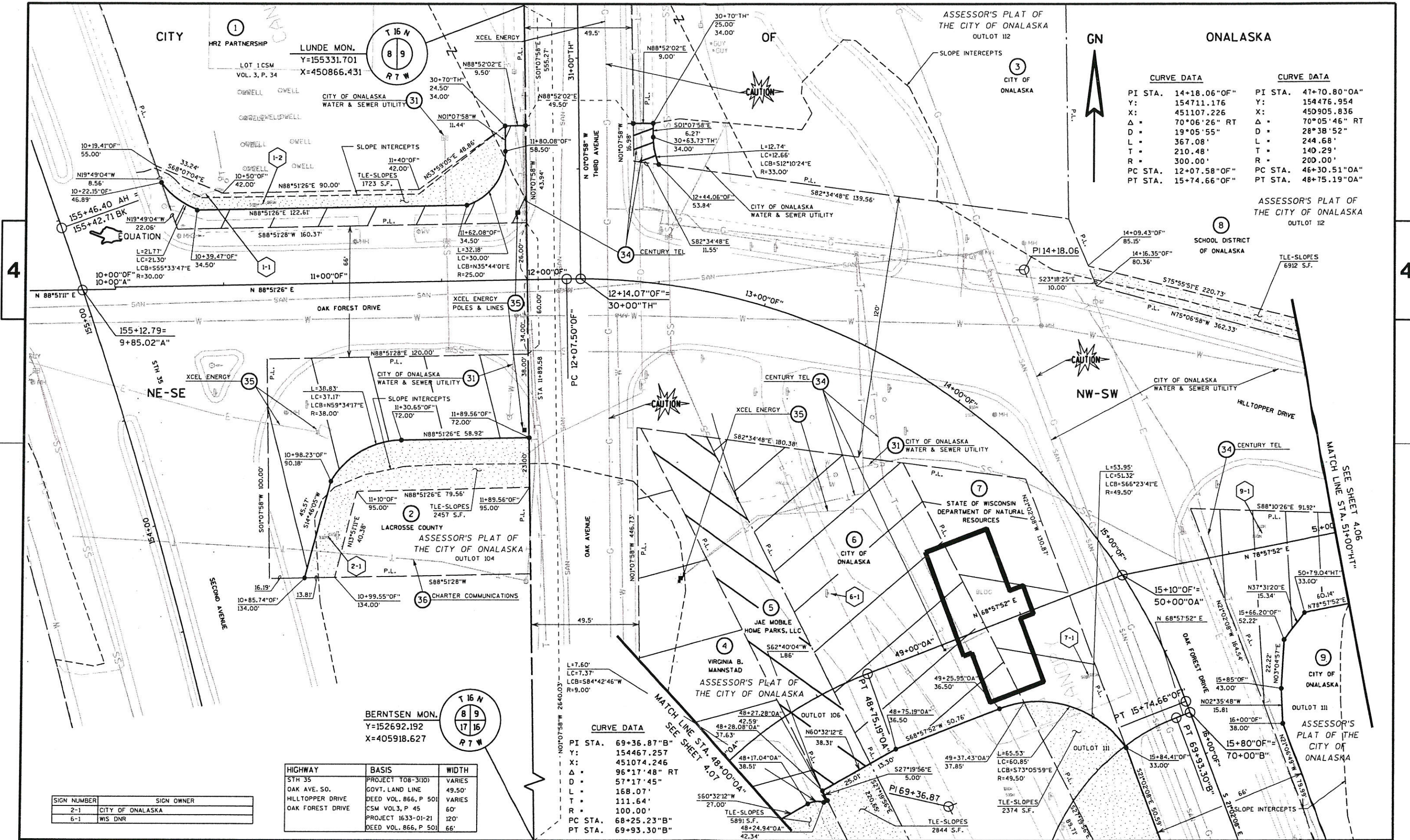
GN

ONALASKA

CURVE DATA

PI STA.	14+18.06"OF"	PI STA.	47+70.80"OA"
Y:	154711.176	Y:	154476.954
X:	451107.226	X:	450905.836
Δ =	70°06'26" RT	Δ =	70°05'46" RT
D =	19°05'55"	D =	28°38'52"
L =	367.08'	L =	244.68'
T =	210.48'	T =	140.29'
R =	300.00'	R =	200.00'
PC STA.	12+07.58"OF"	PC STA.	46+30.51"OA"
PT STA.	15+74.66"OF"	PT STA.	48+75.19"OA"

ASSESSOR'S PLAT OF THE CITY OF ONALASKA OUTLOT 112



BERNTSEN MON. Y=152692.192 X=405918.627

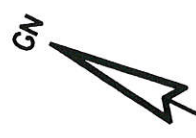
CURVE DATA

PI STA.	69+36.87" B"
Y:	154467.257
X:	451074.246
Δ =	96°17'48" RT
D =	57°17'45"
L =	168.07'
T =	111.64'
R =	100.00'
PC STA.	68+25.23" B"
PT STA.	69+93.30" B"

HIGHWAY	BASIS	WIDTH
STH 35	PROJECT T08-3110	VARIES
OAK AVE. SO.	GOVT. LAND LINE	49.50'
HILLTOPPER DRIVE	DEED VOL. 866, P. 501	VARIES
OAK FOREST DRIVE	CSM VOL. 3, P. 45	60'
	PROJECT 1633-01-21	120'
	DEED VOL. 866, P. 501	66'

SIGN NUMBER	SIGN OWNER
2-1	CITY OF ONALASKA
6-1	WIS DNR

REVISION DATE AUGUST 1, 2005	DATE MAY 31, 2005	SCALE, FEET 0 20 40	HWY: STH 35	STATE R/W PROJECT NUMBER 7190-04-21	PLAT SHEET NO: 4.04
	GRID FACTOR N/A		COUNTY: LACROSSE	CONSTRUCTION PROJECT NUMBER	PS&E SHEET



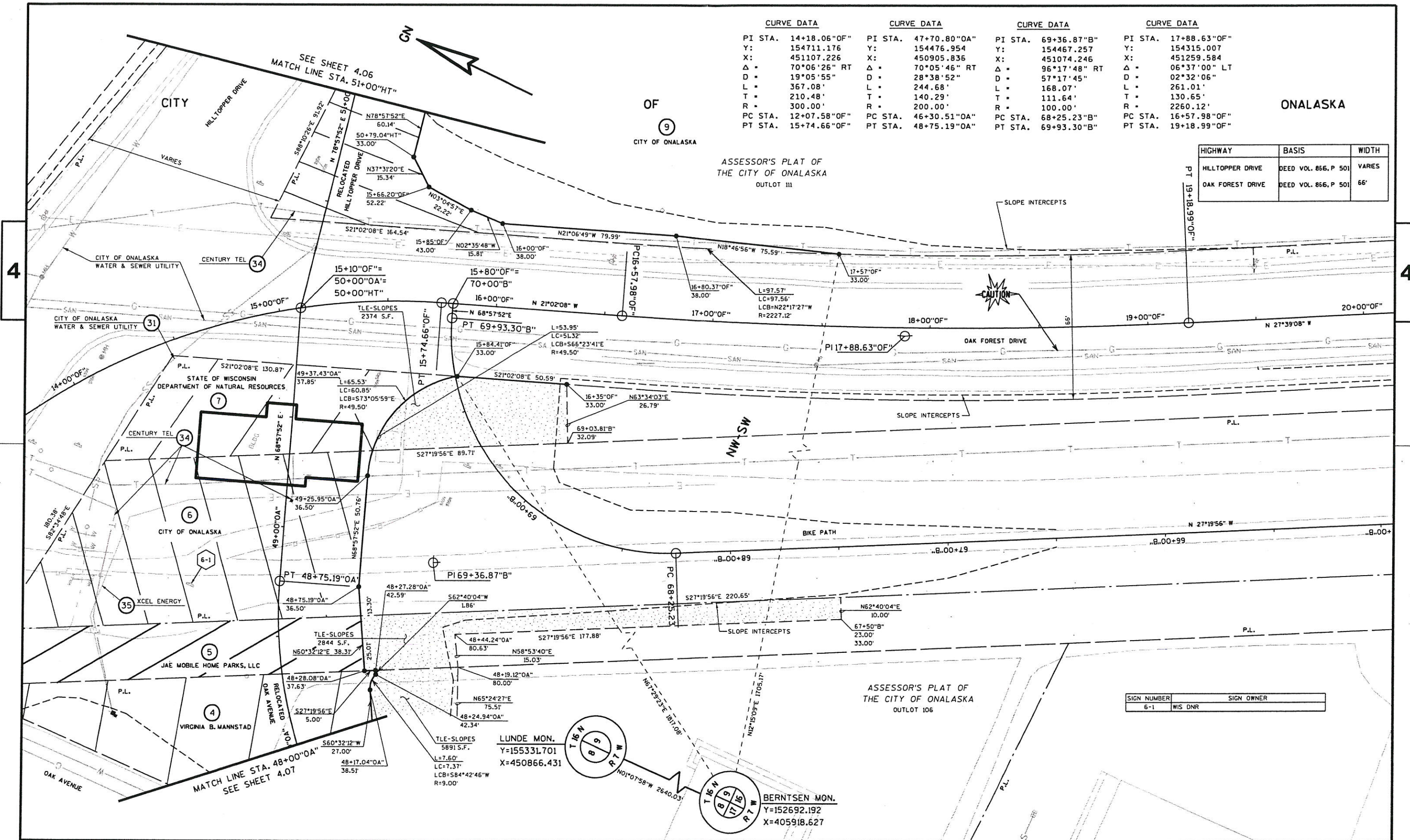
CURVE DATA		CURVE DATA		CURVE DATA		CURVE DATA	
PI STA.	14+18.06"OF"	PI STA.	47+70.80"OA"	PI STA.	69+36.87"B"	PI STA.	17+88.63"OF"
Y:	154711.176	Y:	154476.954	Y:	154467.257	Y:	154315.007
X:	451107.226	X:	450905.836	X:	451074.246	X:	451259.584
Δ	70°06'26" RT	Δ	70°05'46" RT	Δ	96°17'48" RT	Δ	06°37'00" LT
D	19°05'55"	D	28°38'52"	D	57°17'45"	D	02°32'06"
L	367.08'	L	244.68'	L	168.07'	L	261.01'
T	210.48'	T	140.29'	T	111.64'	T	130.65'
R	300.00'	R	200.00'	R	100.00'	R	2260.12'
PC STA.	12+07.58"OF"	PC STA.	46+30.51"OA"	PC STA.	68+25.23"B"	PC STA.	16+57.98"OF"
PT STA.	15+74.66"OF"	PT STA.	48+75.19"OA"	PT STA.	69+93.30"B"	PT STA.	19+18.99"OF"

ONALASKA

OF
CITY OF ONALASKA

ASSESSOR'S PLAT OF
THE CITY OF ONALASKA
OUTLOT 111

HIGHWAY	BASIS	WIDTH
HILLTOPPER DRIVE	DEED VOL. 856, P 501	VARIES
OAK FOREST DRIVE	DEED VOL. 856, P 501	66'



SIGN NUMBER	SIGN OWNER
6-1	WIS DNR

REVISION DATE AUGUST 1,2005	DATE MAY 31, 2005	SCALE, FEET 0 20 40	HWY: STH 35	STATE R/W PROJECT NUMBER 7190-04-21	PLAT SHEET NO: 4.05
GRID FACTOR N/A			COUNTY: LACROSSE	CONSTRUCTION PROJECT NUMBER	PS&E SHEET E

FILE NAME : g:\wot5\w500214\w5214r05.dgn

PLOT DATE : 05 AUG 2005

PLOT BY : KL Engineering

PLOT NAME :

PLOT SCALE :

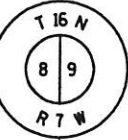
WISDOT/CADD SHEET 75

CITY

OF

ONALASKA

LUNDE MON.
Y=155331.701
X=450866.431



GN



OUTLOT 112
ASSESSOR'S PLAT OF
THE CITY OF ONALASKA

8
SCHOOL DISTRICT
OF ONALASKA

SLOPE INTERCEPTS

TLE-DRIVEWAY
6912 S.F.

NW-SW

31 CITY OF ONALASKA
WATER & SEWER UTILITY

HIGHWAY	BASIS	WIDTH
HILL TOPPER DRIVE	DEED VOL. 866, P 501	66'

MATCH LINE STA. 51+00"HT"
SEE SHEETS 4.04 & 4.05

9
CITY OF ONALASKA

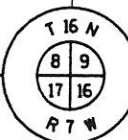
OUTLOT 111
ASSESSOR'S PLAT OF
THE CITY OF ONALASKA

SLOPE INTERCEPTS

CURVE DATA

PI STA. 52+08.21"HT"
 Y: 154611.967
 X: 451357.633
 Δ = 25°55'09" RT
 D = 19°05'55"
 L = 135.71'
 T = 69.04'
 R = 300.00'
 PC STA. 51+39.17"HT"
 PT STA. 52+77.88"HT"

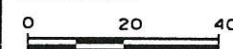
BERNTSEN MON.
Y=152692.192
X=405918.627



REVISION DATE
AUGUST 1, 2005

DATE MAY 31, 2005

SCALE, FEET



HWY: STH 35

STATE R/W PROJECT NUMBER 7190-04-21

PLAT SHEET NO: 4.06

GRID FACTOR N/A

COUNTY: LACROSSE

CONSTRUCTION PROJECT NUMBER

PS&E SHEET

E

4

4

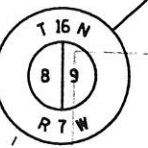
END RELOCATION ORDER OF STA. 156+00

Y = 154780.172
X = 450646.503

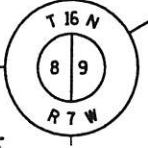
CURVE DATA

PI STA. 145+31.39
 Y: 153600.164
 X: 451071.748
 $\Delta = 55^\circ 18' 00''$ LT
 D = $02^\circ 30' 00''$
 L = 2212.01'
 T = 1200.69'
 R = 2291.84'
 PC STA. 133+30.70
 PT STA. 155+42.71 BK
 155+46.40 AH

LUNDE MON.
 Y=155331.701
 X=450866.431



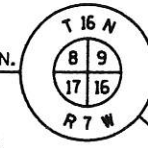
LUNDE MON.
 Y=155331.701
 X=450866.431



BEGIN RELOCATION ORDER STA. 149+50

Y = 154152.496
X = 450791.688

BERNTSEN MON.
 Y=152692.192
 X=405918.627



PI DATA
 PI STA. 45+00.00"
 Y: 154206.208
 X: 450911.184
 $\Delta = 02^\circ 40' 19''$ RT

CURVE DATA
 PI STA. 47+70.80"0A"
 Y: 154476.954
 X: 450905.836
 $\Delta = 70^\circ 05' 46''$ RT
 D = $28^\circ 38' 52''$
 L = 244.68'
 T = 140.29'
 R = 200.00'
 PC STA. 46+30.51"0A"
 PT STA. 48+75.19"0A"

HIGHWAY	BASIS	WIDTH
STH 35	PROJECT T08-3(10)	VARIES
OAK FOREST DR.	PROJECT 1633-02-21 & CSM VOL. 3, P. 45	66'
OAK AVE. SO.	GOVT. LAND LINE	49.5'

REVISION DATE AUGUST 1,2005	DATE MAY 31, 2005	SCALE, FEET 0 20 40	HWY: STH 35	STATE R/W PROJECT NUMBER 7190-04-21	PLAT SHEET NO: 4.07
	GRID FACTOR N/A		COUNTY: LACROSSE	CONSTRUCTION PROJECT NUMBER	PS&E SHEET

FILE NAME : g:\wdot5\wd500214\rv\214r07.dgn

PLOT DATE : 05 AUG 2005

PLOT BY : KL Engineering

PLOT NAME :

PLOT SCALE :

WISDOT/CADDS SHEET 75