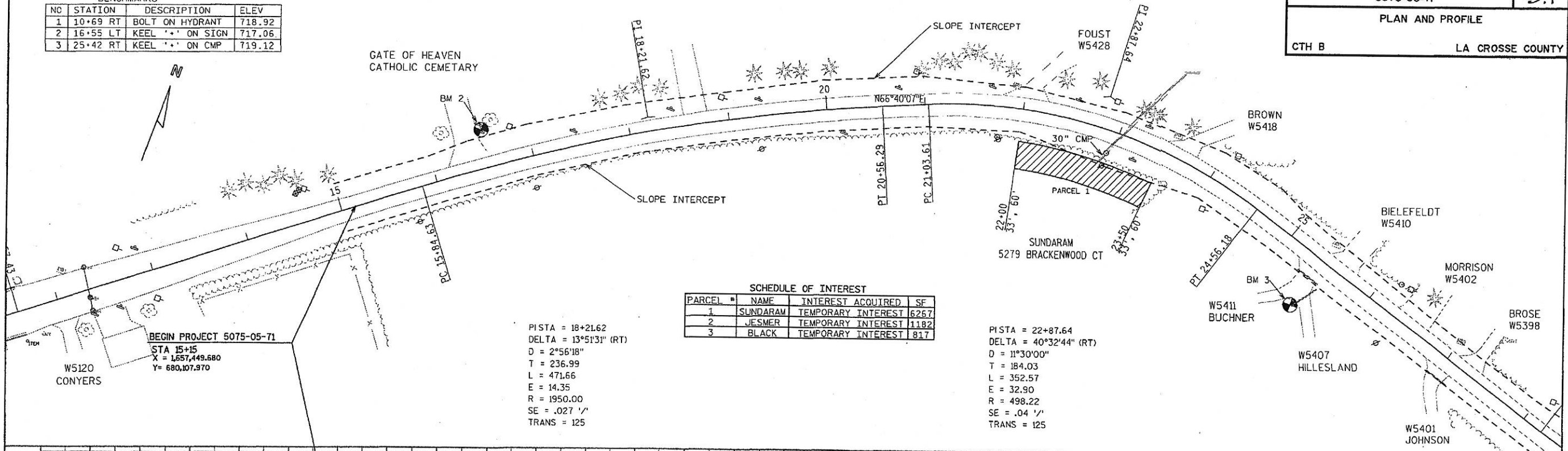


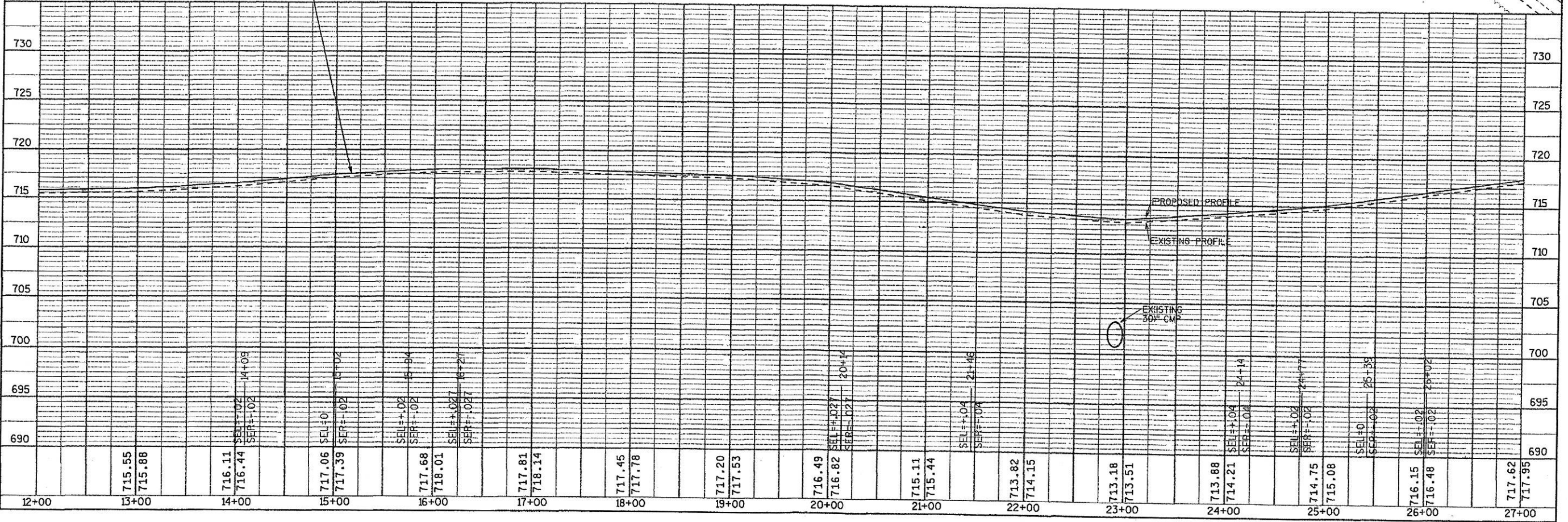
NO	STATION	DESCRIPTION	ELEV
1	10+69 RT	BOLT ON HYDRANT	718.92
2	16+55 LT	KEEL '••' ON SIGN	717.06
3	25+42 RT	KEEL '••' ON CMP	719.12



PARCEL #	NAME	INTEREST ACQUIRED	SF
1	SUNDARAM	TEMPORARY INTEREST	6267
2	JESMER	TEMPORARY INTEREST	1182
3	BLACK	TEMPORARY INTEREST	817

PISTA = 18+21.62
 DELTA = 13°51'31" (RT)
 D = 2°56'18"
 T = 236.99
 L = 471.66
 E = 14.35
 R = 1950.00
 SE = .027 %
 TRANS = 125

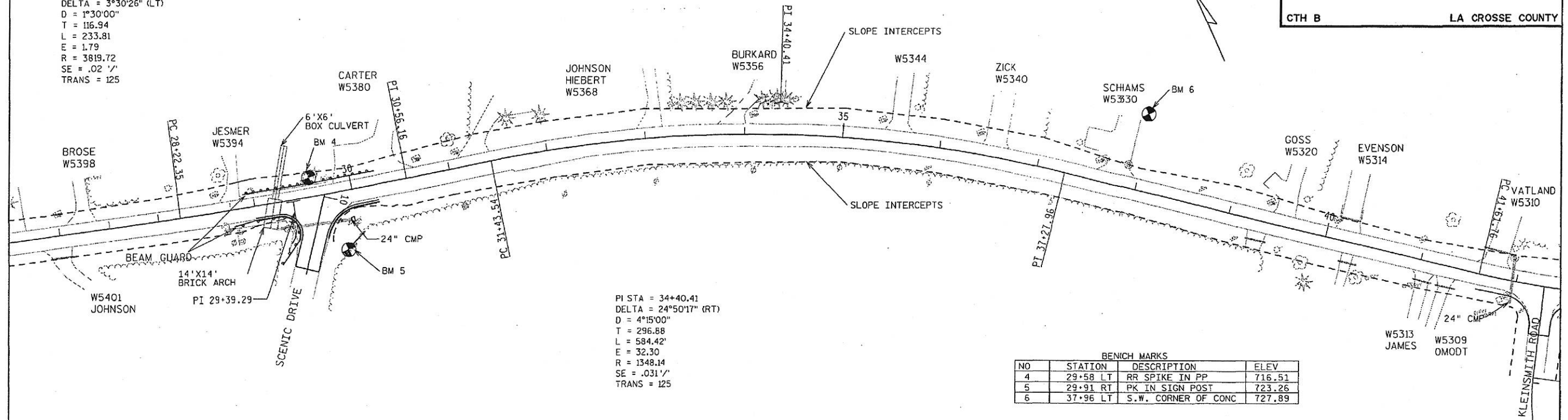
PISTA = 22+87.64
 DELTA = 40°32'44" (RT)
 D = 11°30'00"
 T = 184.03
 L = 352.57
 E = 32.90
 R = 498.22
 SE = .04 %
 TRANS = 125



Station	Elevation	Station	Elevation	Station	Elevation	Station	Elevation
12+00		13+00	715.55 715.88	14+00	716.11 716.44	15+00	717.06 717.39
				16+00	717.68 718.01	17+00	717.81 718.14
						18+00	717.45 717.78
						19+00	717.20 717.53
						20+00	716.49 716.82
						21+00	715.11 715.44
						22+00	713.82 714.15
						23+00	713.18 713.51
						24+00	713.88 714.21
						25+00	714.75 715.08
						26+00	716.15 716.48
						27+00	717.62 717.95

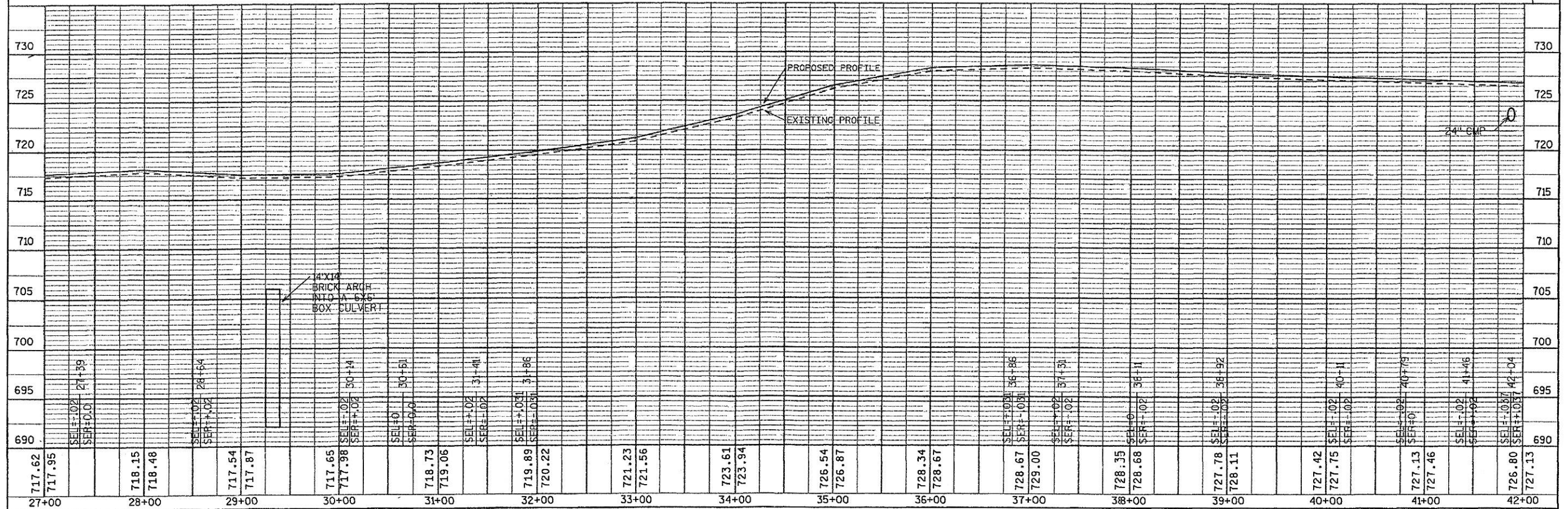
PI STA = 29+39.29
DELTA = 3°30'26" (LT)
D = 1°30'00"
T = 116.94
L = 233.81
E = 1.79
R = 3819.72
SE = .02 1/2'
TRANS = 125

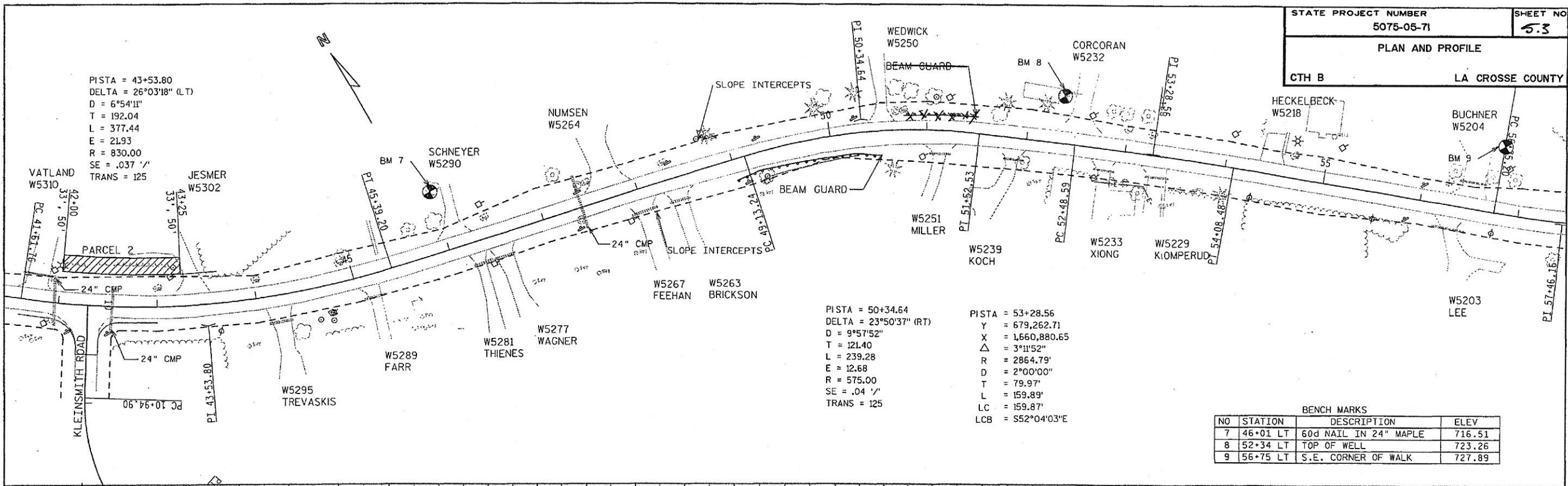
PI STA = 34+40.41
DELTA = 24°50'17" (RT)
D = 4°15'00"
T = 296.88
L = 584.42'
E = 32.30
R = 1348.14
SE = .031 1/2'
TRANS = 125



BENCH MARKS

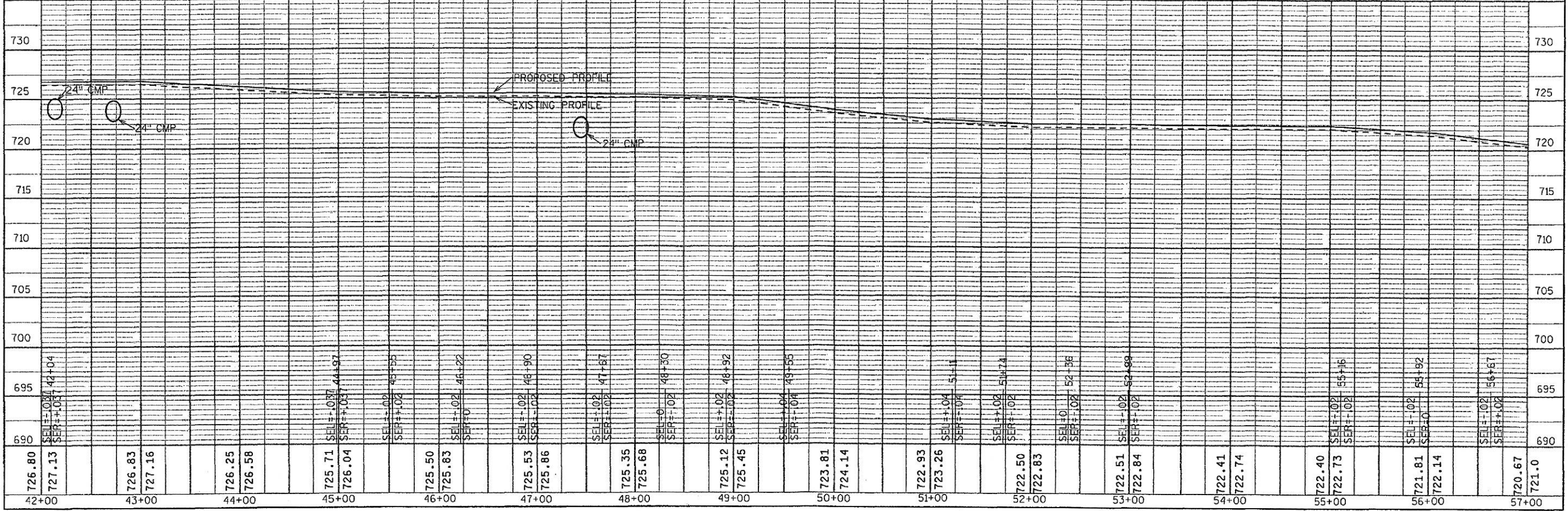
NO	STATION	DESCRIPTION	ELEV
4	29+58 LT	RR SPIKE IN PP	716.51
5	29+91 RT	PK IN SIGN POST	723.26
6	37+96 LT	S.W. CORNER OF CONC	727.89

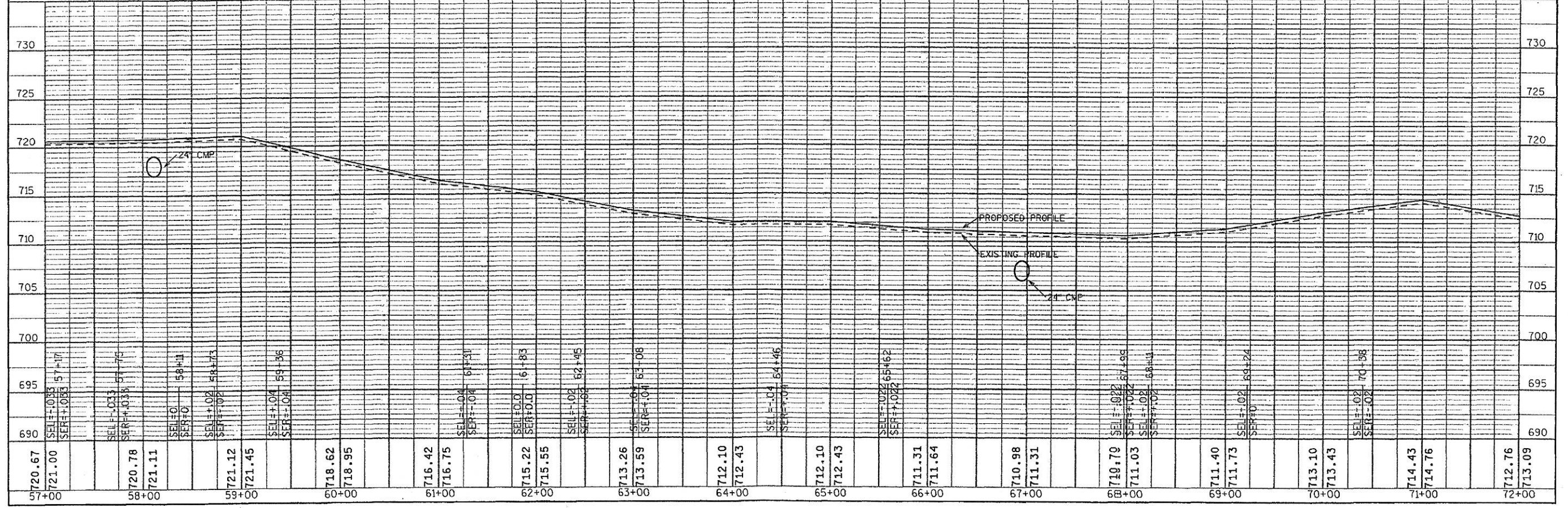
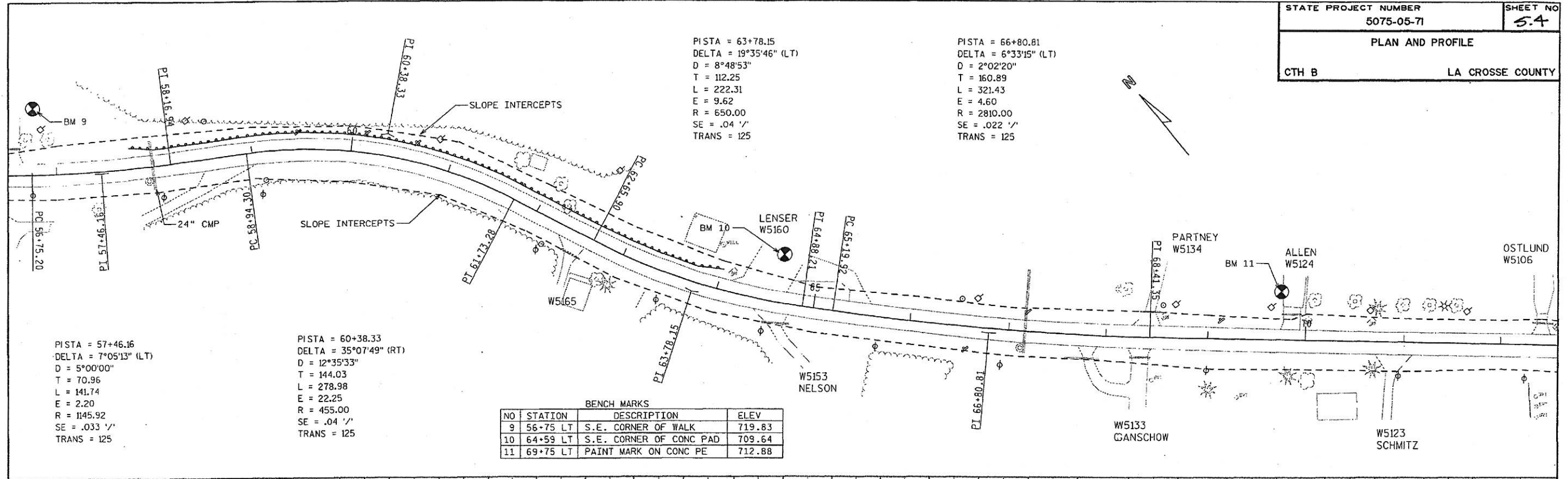


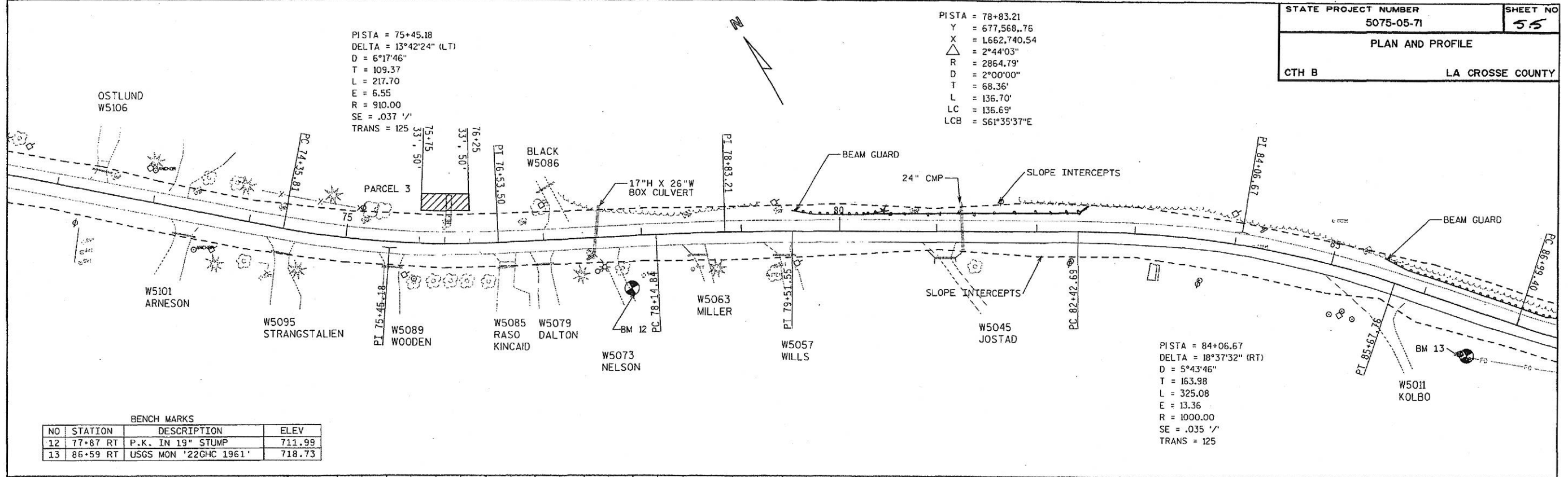


BENCH MARKS

NO	STATION	DESCRIPTION	ELEV
7	46+01 LT	60d NAIL IN 24" MAPLE	716.51
8	52+34 LT	TOP OF WELL	723.26
9	56+75 LT	S.E. CORNER OF WALK	727.89

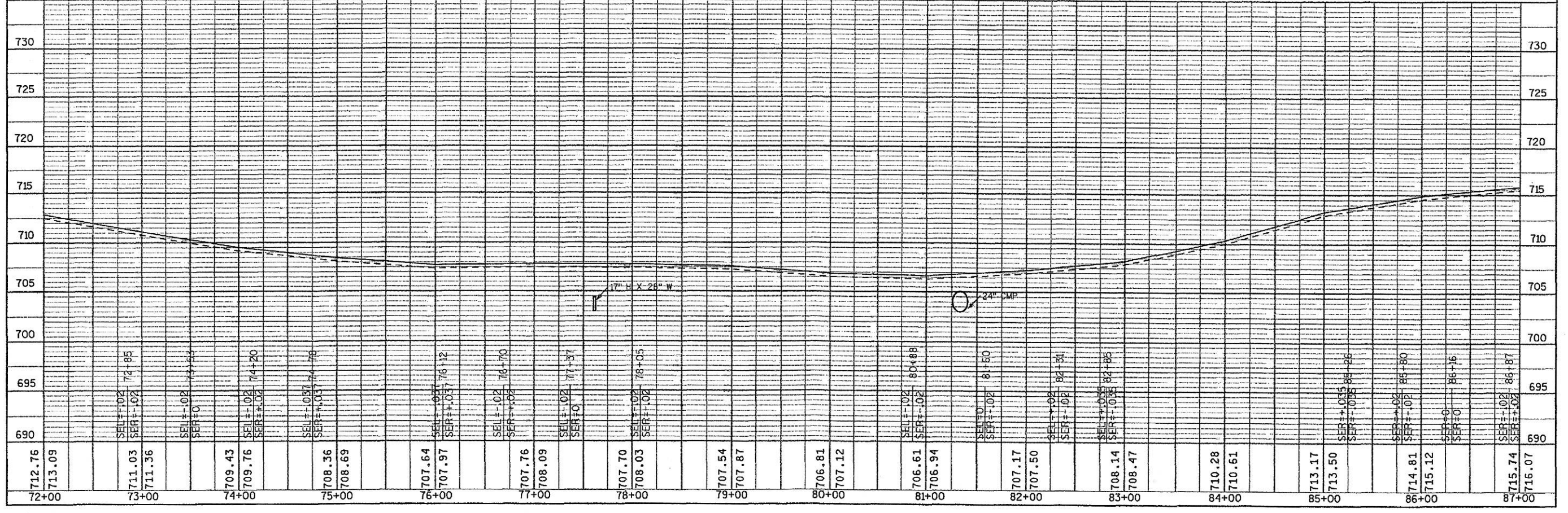






BENCH MARKS

NO	STATION	DESCRIPTION	ELEV
12	77+87 RT	P.K. IN 19" STUMP	711.99
13	86+59 RT	USGS MON '22CHC 1961'	718.73



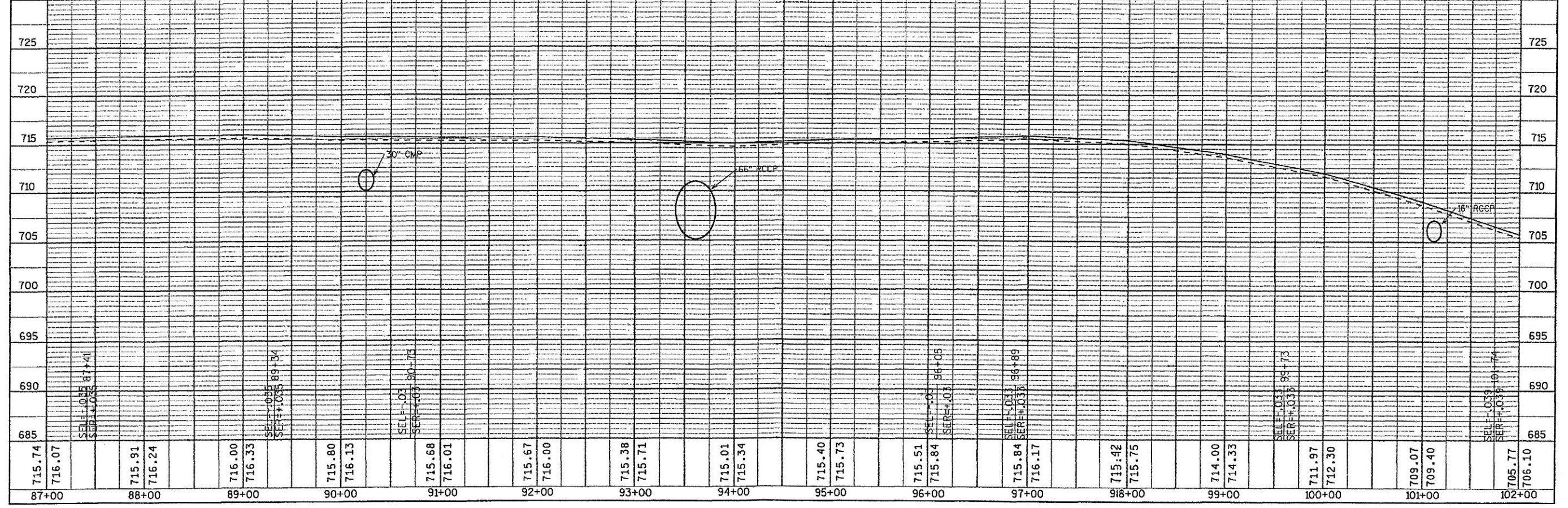
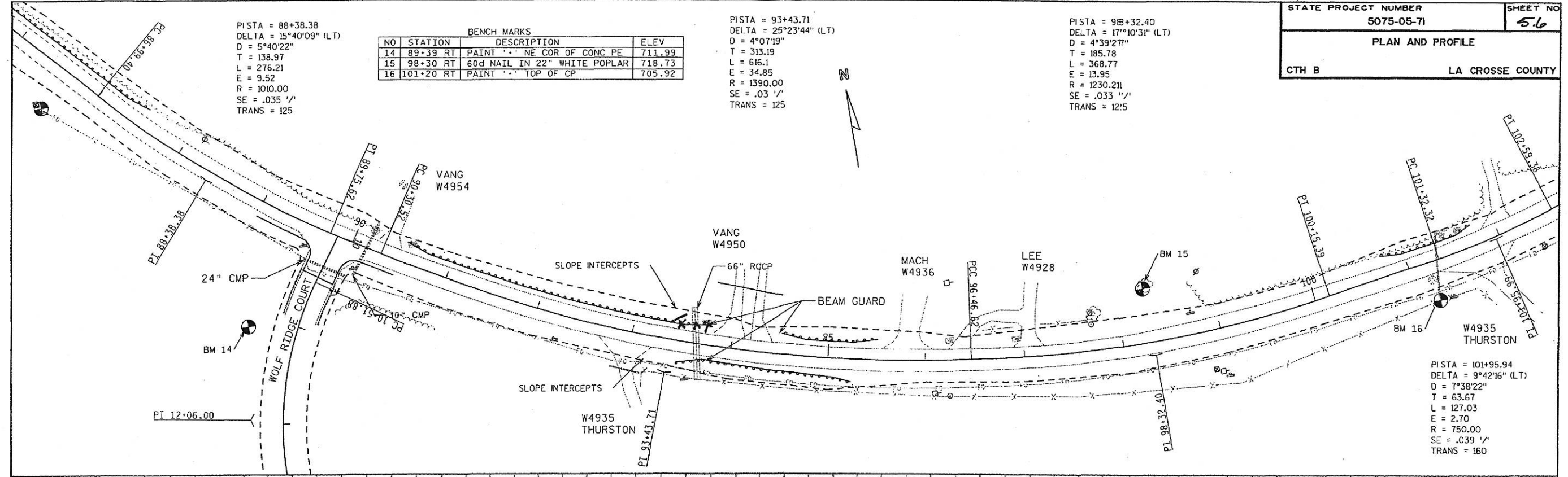
PISTA = 88+38.38
 DELTA = 15°40'09" (LT)
 D = 5°40'22"
 T = 138.97
 L = 276.21
 E = 9.52
 R = 1010.00
 SE = .035 1/1'
 TRANS = 125

NO	STATION	DESCRIPTION	ELEV
14	89+39 RT	PAINT "X" NE COR OF CONC PE	711.99
15	98+30 RT	60d NAIL IN 22" WHITE POPLAR	718.73
16	101+20 RT	PAINT "X" TOP OF CP	705.92

PISTA = 93+43.71
 DELTA = 25°23'44" (LT)
 D = 4°07'19"
 T = 313.19
 L = 616.1
 E = 34.85
 R = 1390.00
 SE = .03 1/1'
 TRANS = 125

PISTA = 98+32.40
 DELTA = 17°10'31" (LT)
 D = 4°39'27"
 T = 185.78
 L = 368.77
 E = 13.95
 R = 1230.211
 SE = .033 1/1'
 TRANS = 1215

PISTA = 101+95.94
 DELTA = 9°42'16" (LT)
 D = 7°38'22"
 T = 63.67
 L = 127.03
 E = 2.70
 R = 750.00
 SE = .039 1/1'
 TRANS = 160



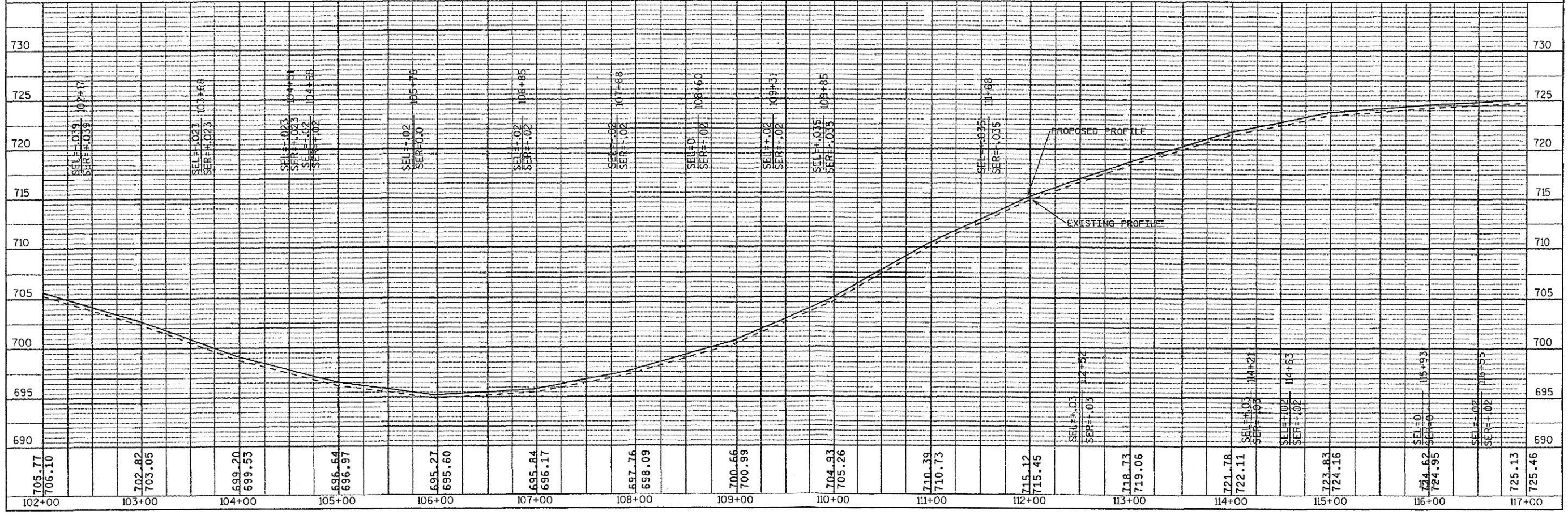
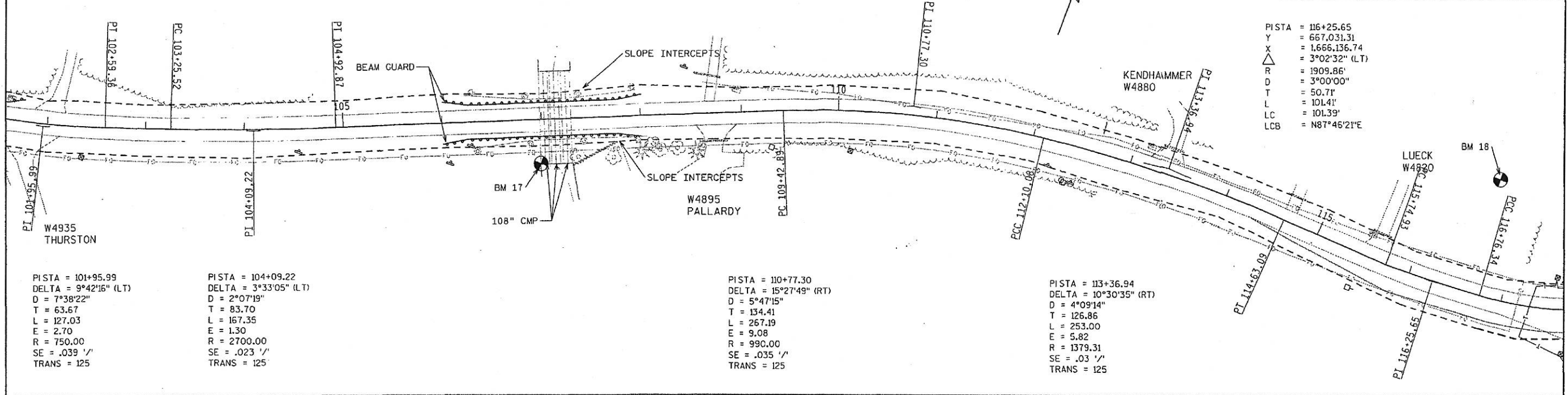
BENCH MARKS			
NO	STATION	DESCRIPTION	ELEV
17	106+97 RT	PAINT '••' TOP OF WING WALL	711.99
18	116+62 RT	SE CORNER OF FIRST STEP	718.73

STATE PROJECT NUMBER
5075-05-71

SHEET NO
5.7

PLAN AND PROFILE

CTH B LA CROSSE COUNTY



PISTA = 118+00.34
 DELTA = 38°12'02" (LT)
 D = 16°00'00"
 T = 124.00
 L = 238.75
 E = 20.86
 R = 358.10
 SE = .04 '1'
 TRANS = 125

BENCH MARKS			
NO	STATION	DESCRIPTION	ELEV
18	116+62 RT	SE CORNER OF FIRST STEP	718.73

