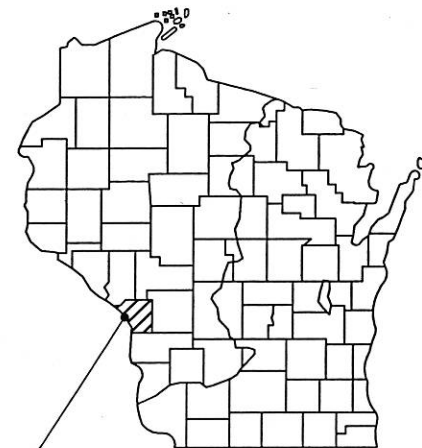


ORDER OF SHEETS

Section No. 1	Title
Section No.	Typical Sections and Details
Section No.	Estimate of Quantities
Section No.	Miscellaneous Quantities
Section No.	Right-of-Way Plat
Section No.	Plan and Profile
Section No.	Standard Detail Drawings
Section No.	Sign Plates
Section No.	Structure Plans
Section No.	Computer Earthwork Data
Section No.	Cross-Sections

TOTAL SHEETS =



PROJECT LOCATION

DESIGN DESIGNATION

A.D.T. (2003)	=	12,000
A.D.T. (2023)	=	15,700
D.H.V. (2023)	=	1410
D. (%)	=	50/50
T. (% OF A.D.T.)	=	5.2%
DESIGN SPEED	=	40 mph
ESALS	=	1,941,800

CONVENTIONAL SIGNS

COUNTY LINE	COMBUSTIBLE FLUIDS (UNDER PRESSURE)	
CORPORATE LIMITS	UNDERGROUND UTILITIES	
PROPERTY LINE	GAS	G
LOT LINE	ELECTRIC	E
LIMITED HIGHWAY EASEMENT	TELEPHONE	T
EXISTING RIGHT OF WAY	WATER	WTR
NEW RIGHT OF WAY	SANITARY SEWER	SAN
REFERENCE LINE	STORM SEWER	STM
SLOPE INTERCEPT	SERVICE PEDESTAL	☒
ORIGINAL GROUND	CABLE MARKER	⌋
MARSH OR ROCK PROFILE	POWER POLE	□
CULVERT IN PLACE	TELEPHONE POLE	⊘
CULVERT REQUIRED	RAILROADS	⊢
CULVERT REQUIRED (Profile)	MARSH	
	WOODED AREA	
	RIGHT-OF-WAY MARKERS	
	OVERHEAD LINES	O.H.

STATE OF WISCONSIN

DEPARTMENT OF TRANSPORTATION

PLAN OF PROPOSED IMPROVEMENT

CLINTON STREET, TOWN OF CAMPBELL

(BAINBRIDGE STREET - NAKOMIS AVENUE)

CTH B

LA CROSSE COUNTY

STATE PROJECT NUMBER  
**5991-09-33**

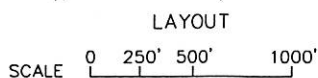
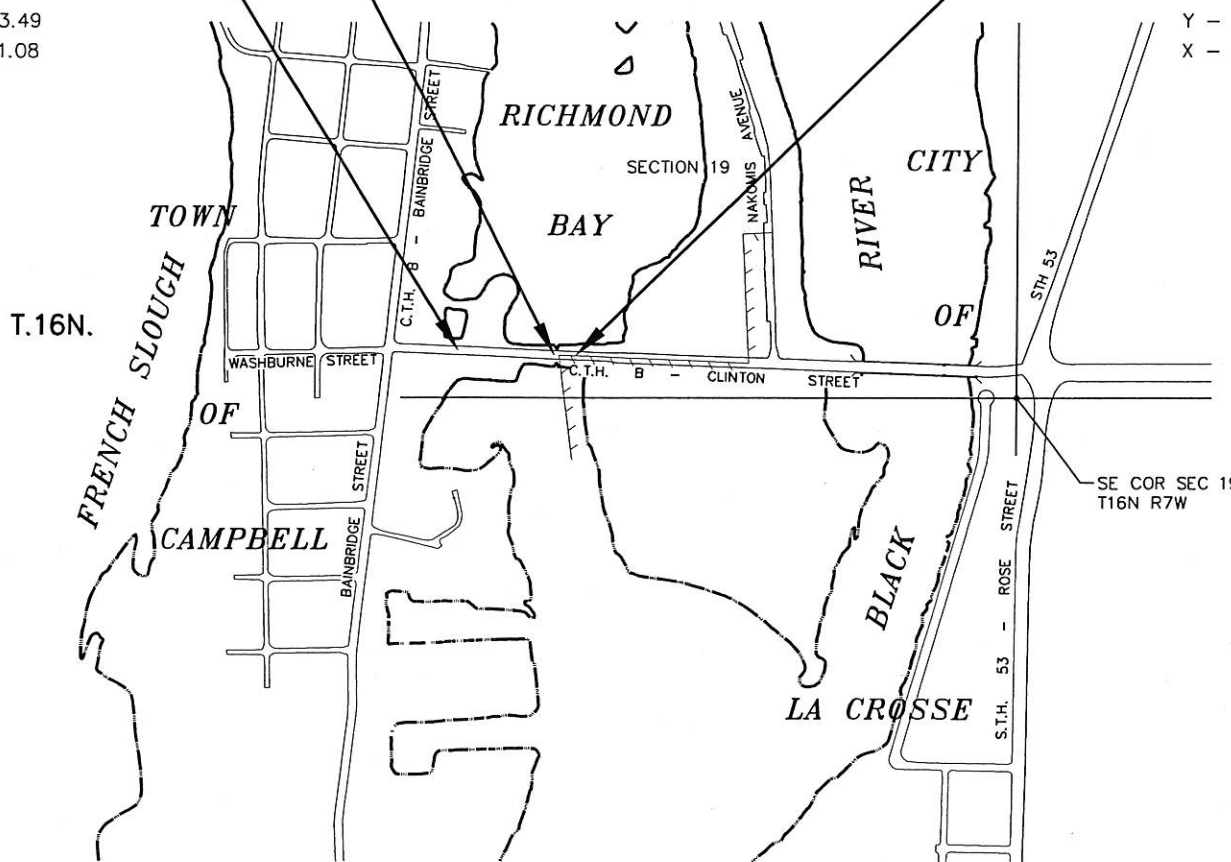
BEGIN PROJECT  
STA. 12+60

Y - 205,543.49  
X - 496,631.08

STRUCTURE B-32-211

END PROJECT  
STA. 21+66.24

Y - 205,502.92  
X - 497,536.41



TOTAL NET LENGTH OF CENTERLINE = 0.172 MI.

COORDINATES SHOWN ARE REFERENCED TO THE WISCONSIN COUNTY COORDINATE SYSTEM (WCCS) LA CROSSE COUNTY

STATE PROJECT	FEDERAL PROJECT	
	PROJECT	CONTRACT
5991-09-33		

ACCEPTED FOR TOWN OF CAMPBELL  
DATE: 12-17-03  
TOWN CHAIRMAN: *David Elgert*

ACCEPTED FOR LA CROSSE COUNTY  
DATE: 12-19-03  
COUNTY COMMISSIONER: *Dennis J. Jernstedt*

ORIGINAL PLANS PREPARED BY  
**Cedar** corporation  
604 Wilson Avenue, Menomonie, Wisconsin 54751  
715-235-9081, 800-472-7372, FAX 715-235-2727, www.cedarcorp.com



DATE: 12-15-03  
*G.M. Wolfe*

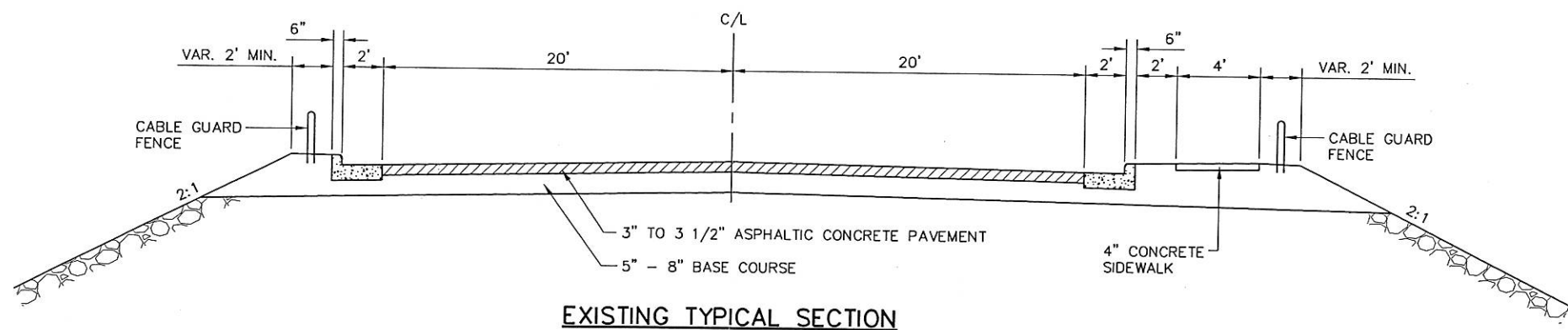
STATE OF WISCONSIN DEPARTMENT OF TRANSPORTATION

PREPARED BY  
Surveyor: CEDAR CORP.  
Designer: CEDAR CORP.  
Project Manager: NATHAN BYOM  
District Examiner: SCOTT LAWRY  
District Supervisor: RANDY BYOM  
C.O. Examiner:

APPROVED FOR DISTRICT OFFICE  
DATE: 12/17/03  
DISTRICT DESIGN SUPERVISOR: *Randy Byom*

PROJECT ID: 5991-09-33

COUNTY: LA CROSSE



EXISTING TYPICAL SECTION

STANDARD ABBREVIATIONS

ABUT.	ABUTMENT	NO.	NUMBER
A.D.T.	AVERAGE DAILY TRAFFIC	P.C.	POINT OF CURVATURE
ABND.	ABANDON	P.I.	POINT OF INTERSECTION
AGG.	AGGREGATE	P.T.	POINT OF TANGENCY
B.M.	BENCHMARK	P.E.	PRIVATE ENTRANCE
B/B	BOTTOM OF BANK	P.L.	PROPERTY LINE
C or C/L	CENTERLINE	PROP.	PROPOSED
Δ	CENTRAL ANGLE	R	RADIUS
CONC.	CONCRETE	R.R.	RAILROAD
CONST.	CONSTRUCTION	REQ'D	REQUIRED
COR.	CORNER	RT	RIGHT
C.M.P.	CORRUGATED METAL PIPE	R/W	RIGHT-OF-WAY
C.T.H.	COUNTY TRUNK HIGHWAY	RD	ROAD
CR.	CREEK	SEC.	SECTION
CULV.	CULVERT	SE	SOUTHEAST
D	DEGREE OF CURVE	SW	SOUTHWEST
DIA.	DIAMETER	S.T.H.	STATE TRUNK HIGHWAY
EL.	ELEVATION	STA.	STATION
F.E.	FIELD ENTRANCE	T	TANGENT
FT.	FOOT (FEET)	T.P.	TELEPHONE PEDESTAL
FDN.	FOUNDATION	T.L.E.	TEMPORARY LIMITED EASEMENT
I.P.	IRON PIN	TL	TRANSIT LINE
LT.	LEFT	T/B	TOP OF BANK
L	LENGTH OF CURVE	TYP.	TYPICAL
MAX.	MAXIMUM	UNCL.	UNCLASSIFIED
MI.	MILE	U/G	UNDERGROUND
MIN.	MINIMUM	V.P.C.	VERTICAL POINT OF CURVATURE
NORM.	NORMAL	V.P.I.	VERTICAL POINT OF INTERSECTION
NE	NORTHEAST	V.P.T.	VERTICAL POINT OF TANGENCY
NW	NORTHWEST		

UTILITIES

XCEL ENERGY  
 3215 COMMERCE STREET  
 P.O. BOX 727  
 LA CROSSE, WI 54602-0727  
 ELECTRIC  
 (608) 789-3679  
 CHRIS CARLSON  
 GAS  
 (608) 789-3631  
 ED PRZYTARSKI

CENTURYTEL  
 333 N. FRONT STREET  
 LA CROSSE, WI 54601  
 (608) 796-5143  
 ED FEYEN

TOWN OF CAMPBELL  
 2219 BAINBRIDGE STREET  
 LA CROSSE, WI 54603  
 (608) 783-0050  
 SCOTT JOHNSON (STREETS & ROADS SUPERVISOR)

CHARTER COMMUNICATIONS  
 P.O. BOX 279  
 ONALASKA, WI 54650  
 (608) 783-8130  
 PERRY McLELLAN



Toll Free (800) 242-8511  
 Milwaukee Area (414) 259-1181  
 Hearing Impaired TDD (800) 542-2289  
 www.DiggersHotline.com

DNR LIAISON

DEPARTMENT OF NATURAL RESOURCES  
 1300 W. CLAIREMONT AVENUE  
 P.O. BOX 4001  
 EAU CLAIRE, WI 54702-4001  
 (715) 839-1609  
 JIM DOPERALSKI

DESIGN CONSULTANT

CEDAR CORPORATION  
 604 WILSON AVENUE  
 MENOMONIE, WI 54751  
 (715) 235-9081  
 GREGORY M. WOLFE, PE

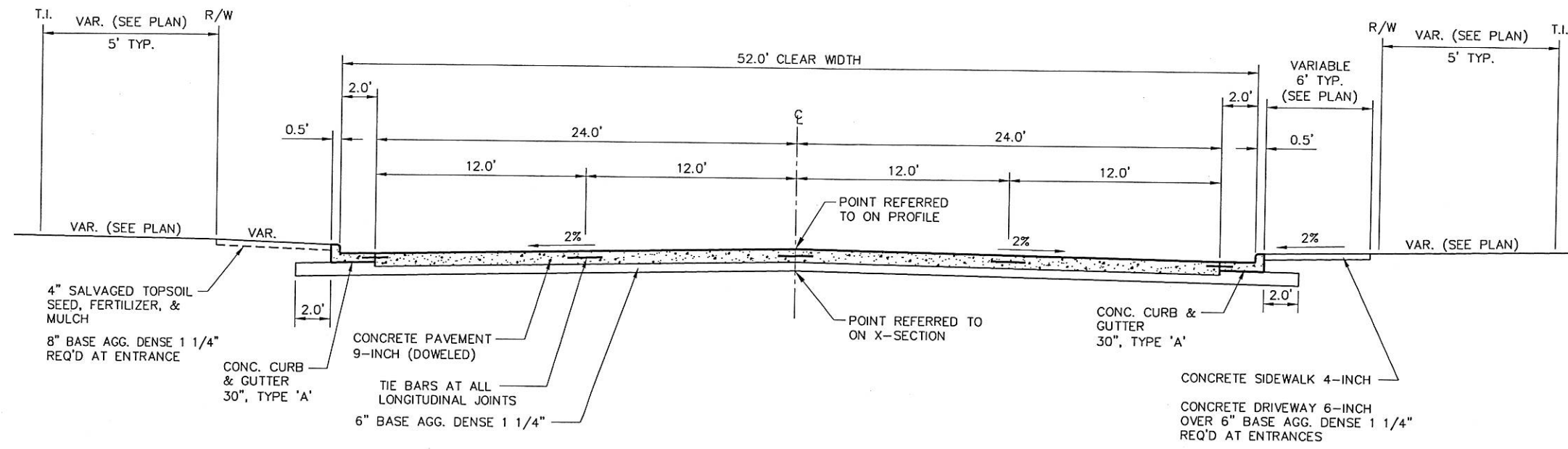
GENERAL NOTES

- THE LOCATIONS OF EXISTING AND PROPOSED UTILITY INSTALLATIONS AS SHOWN ON THE PLANS ARE APPROXIMATE. THERE MAY BE OTHER UTILITY INSTALLATIONS WITHIN THE PROJECT AREA THAT ARE NOT SHOWN.
- SILT FENCE TO BE PLACED AS SHOWN ON THE PLAN OR AS DIRECTED BY THE ENGINEER. SILT FENCE TO BE PLACED PRIOR TO CONSTRUCTION AND IN PLACE PRIOR TO BRIDGE REMOVAL.
- NO TREES OR SHRUBS ARE TO BE REMOVED UNLESS SUCH TREES OR SHRUBS HAVE FIRST BEEN INDICATED FOR REMOVAL BY THE ENGINEER IN THE FIELD.
- THE WISCONSIN DEPARTMENT OF TRANSPORTATION WILL FURNISH THE CONTRACTOR A MONUMENT WHICH SHALL BE SET IN THE STRUCTURE AS DESIGNATED BY THE ENGINEER.
- EXCAVATION BELOW SUBGRADE (EBS) IS NOT USED TO BALANCE YARDAGE AND IS NOT SHOWN ON THE CROSS SECTIONS, BUT IS MEASURED AND PAID FOR AS COMMON EXCAVATION. THE LOCATION OF EBS WILL BE DETERMINED BY THE ENGINEER.
- SHRINKAGE IS ESTIMATED AT 30%.
- WHEN THE QUANTITY OF THE ITEM OF CRUSHED AGGREGATE BASE COURSE OR ASPHALTIC PAVEMENT IS MEASURED FOR PAYMENT BY THE TON, THE DEPTH OR THICKNESS OF THE LAYER SHOWN ON THE PLANS IS APPROXIMATE AND THE ACTUAL THICKNESS WILL DEPEND ON THE DISTRIBUTION OF THE MATERIAL AS DIRECTED BY THE ENGINEER.
- COORDINATES AND BEARINGS ON THIS PLAN ARE ORIENTED TO THE WISCONSIN COUNTY COORDINATE SYSTEM (WCCS), LA CROSSE COUNTY.
- THE BENCH MARK IS REFERENCED TO THE WEST BOLT ON OLD SIGN PLATE AT WEBER'S, INTERSECTION OF BAINBRIDGE & CLINTON WITH A RECORDED ELEVATION OF 645.14. (USGS DATUM NGVD 1929)

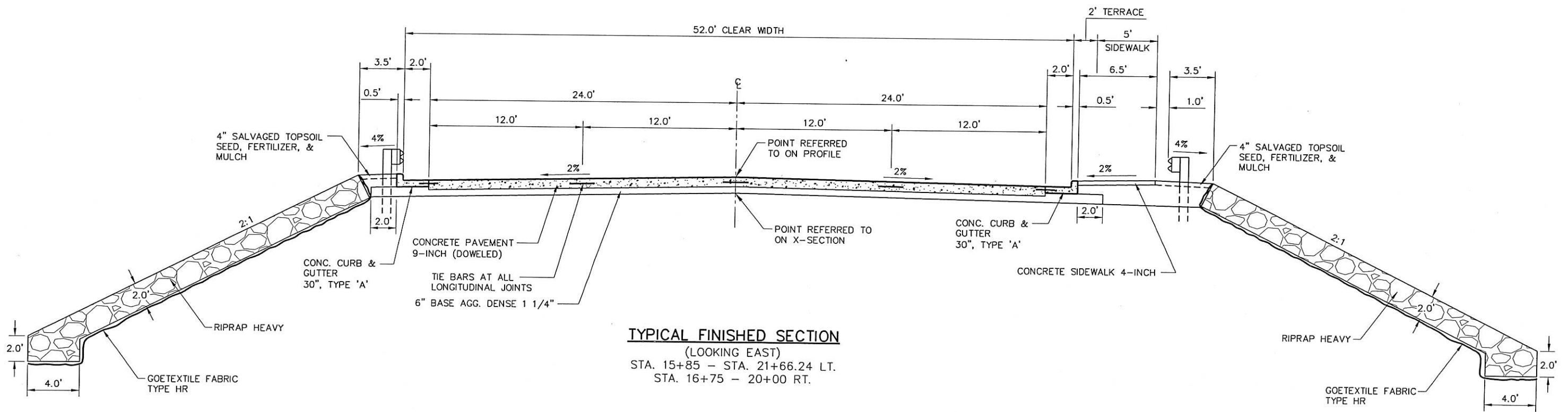
APPLICABLE STANDARD DETAIL DRAWINGS

8A5-16a	INLET COVERS TYPE A, H, A-S & H-S
8A5-16b	INLET COVERS TYPE B, B-A, C, MS-A, & WM
8C1-5	INLETS TYPE 1, 2, 3 & 4
8D1-13	CONCRETE CURB, CONCRETE CURB & GUTTER AND PAVEMENT TIES
8E9-5	SILT FENCE
8E10-2	INLET PROTECTION TYPE A, B, C AND D
8E11-2	TURBIDITY BARRIER
12A3-7	NAME PLATE (STRUCTURES)
13B2-4	CONCRETE PAVEMENT APPROACH SLAB
13C1-11	CONCRETE PAVEMENT LONGITUDINAL JOINTS AND PAVEMENT TIES
13C9-6b	CONCRETE PAVEMENT REPAIR & DOWEL BAR INSTALLATION DETAILS
13C13-4	URBAN DOWELED CONCRETE PAVEMENT
14B7-10e	CONCRETE BARRIER TEMPORARY PRECAST, 10'-0"
14B7-10f	CONCRETE BARRIER TEMPORARY PRECAST END SECTION, 10'-0" AND PORTABLE CRASH CUSHION
14B15-4a,4b	STEEL PLATE BEAM GUARD, CLASS "A" INSTALLATION & ELEMENTS
14B18-4a	STEEL PLATE BEAM GUARD, CLASS "A" (AT BRIDGES, OBSTACLES AND, SIDEROADS/DRIVEWAYS)
14B20-5a	STEEL THRIE BEAM STRUCTURE APPROACH
14B20-5b	STEEL THRIE BEAM STRUCTURE APPROACH, CONNECTION TO SQUARE END AND VERTICAL FACED PARAPETS
14B24-4a,4b,4c	STEEL PLATE BEAM GUARD ENERGY ABSORBING TERMINAL
15C2-4a,4b	BARRICADES AND SIGNS FOR MAINLINE CLOSURES
15C8-9a	PAVEMENT MARKING (MAINLINE)

I:\Clients\W1819 WDOT District 5\130 Clinton Street Town of Campbell\dwg\clintontpx2.dwg 01/14/2004 04:48:43 PM CST

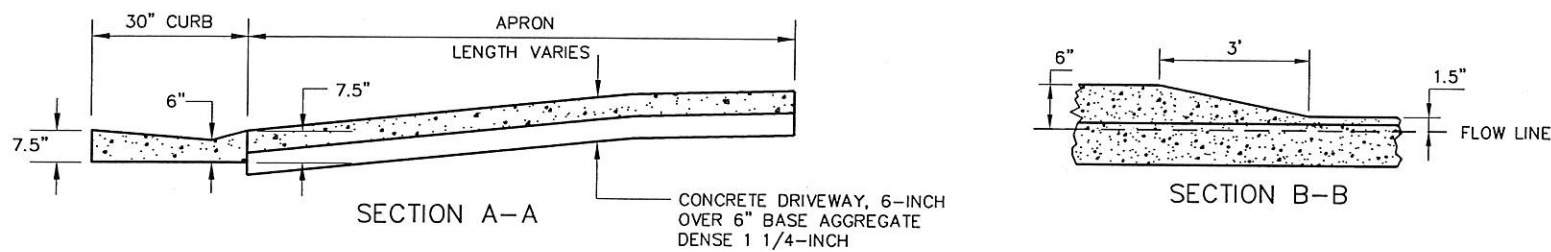
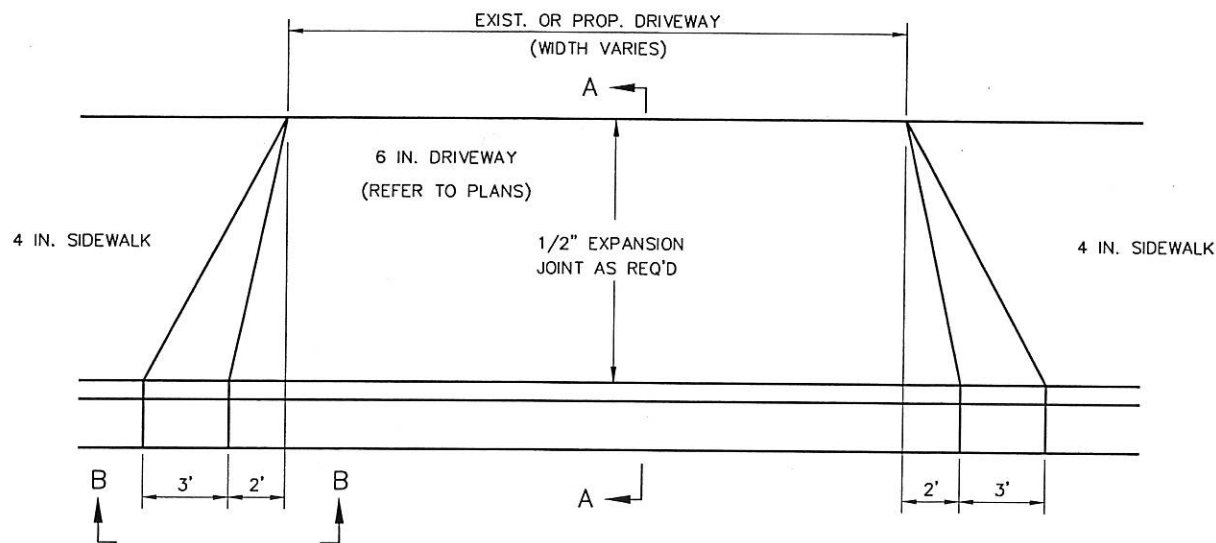


**TYPICAL FINISHED SECTION**  
 (LOOKING EAST)  
 STA. 12+60 - STA. 15+85 LT.  
 STA. 12+60 - STA. 16+75 RT.  
 STA. 20+00 - STA. 21+66.24 RT.

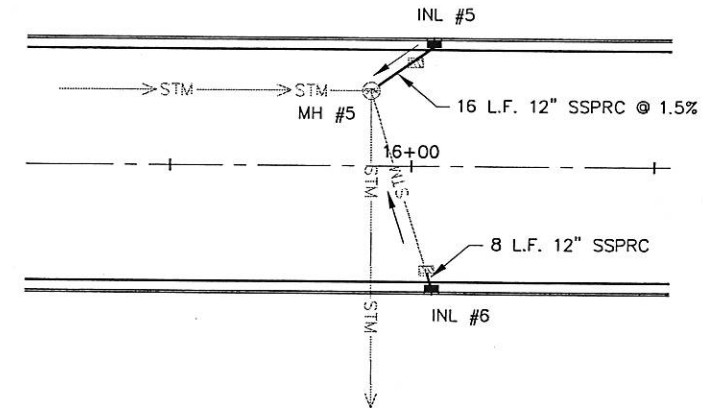


**TYPICAL FINISHED SECTION**  
 (LOOKING EAST)  
 STA. 15+85 - STA. 21+66.24 LT.  
 STA. 16+75 - STA. 20+00 RT.

I:\Clients\W1819 WDOT District 5\130 Clinton Street Town of Campbell\dwg\clintontpx2.dwg 01/14/2004 04:48:43 PM CST



**COMMERCIAL ENTRANCE TYPE 2 AND DRIVEWAY DETAIL**



NOTE: STORM SEWER ELEVATIONS ARE APPROXIMATE AND MAY BE CHANGED BY ENGINEER TO FIT FIELD CONDITIONS.  
 OFFSET DISTANCE 26' IS TO FACE OF CURB.

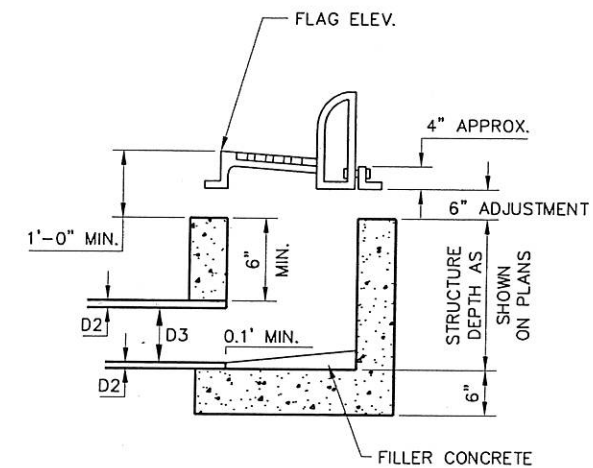
**STORM SEWER DETAIL**

**INL 5**

STA 16+04, 26' LT.  
 INLET TYPE 3  
 INLET COVER TYPE H-S  
 FLAG ELEV. 643.82  
 DISCH. INVERT ELEV. = 640.60  
 STRUCTURE DEPTH = 2'-5"

**INL 6**

STA 16+04, 26' RT.  
 INLET TYPE 3  
 INLET COVER TYPE H-S  
 FLAG ELEV. 643.82  
 DISCH. INVERT ELEV. = 641.02  
 STRUCTURE DEPTH = 2'-0"



**INLETS, TYPE 3**

**INLET DEPTH COMPUTATION DETAIL**

**TYPE 3 INLET**

PIPE SIZE	D3	D2
12"	0.17'	
15"	0.19'	
18"	0.21'	
24"	0.25'	
30"	0.29'	

TABLE I  
REACTION LOADS AT PIPE BENDS AND PLUGS UNDER VARIOUS PRESSURES

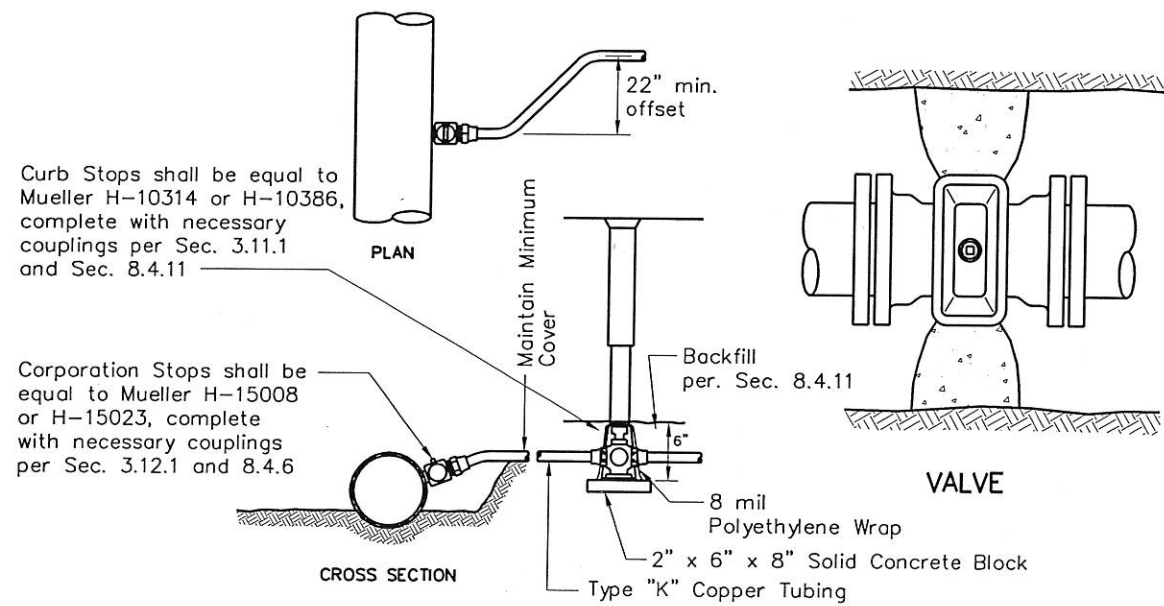
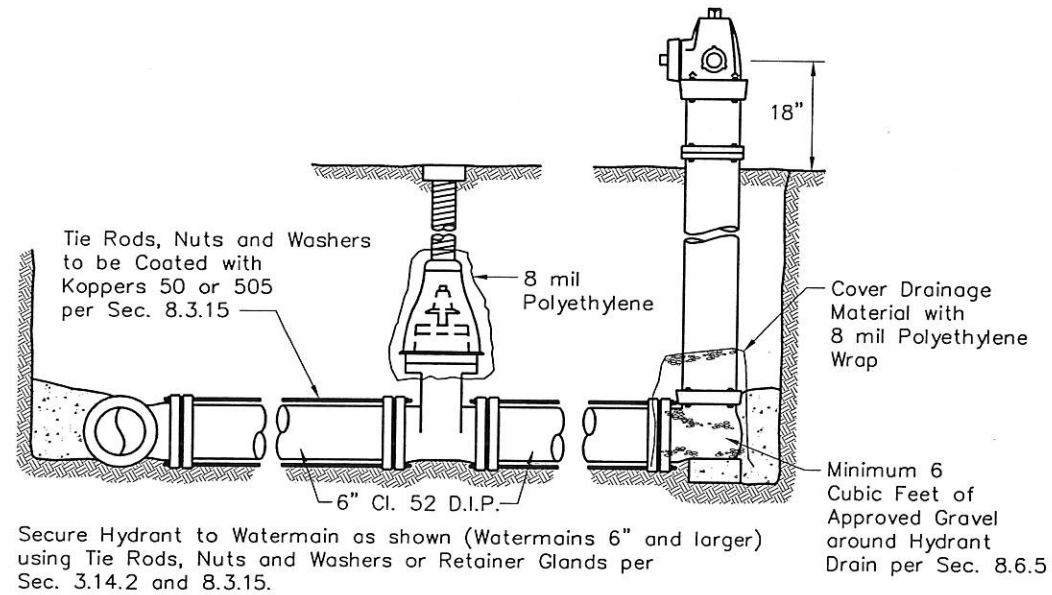
PIPE ID IN.	REACTION LOAD - LB.							
	PLUG	90 DEG. BEND	60 DEG. BEND	45 DEG. BEND	30 DEG. BEND	22 1/2' BEND	11 1/2' BEND	5 5/8' BEND
60-PSIG INTERNAL PRESSURE								
4	756	1068	756	756	390	294	150	72
6	1698	2400	1698	1296	876	660	330	168
8	3018	4260	3018	2310	1566	1176	576	294
10	4716	6666	4716	3601	2436	1836	924	462
12	6780	9600	6780	5178	3510	2640	1326	666

Reaction loads for this table have been calculated using the outside diameter of pipe and the formula:  $R = 2ap \sin 1/2(\text{angle of pipe bend})$  in which R represents the reaction load; a the area of the pipe at the joint considered as a piston; and p the fluid pressure in pounds per square inch.

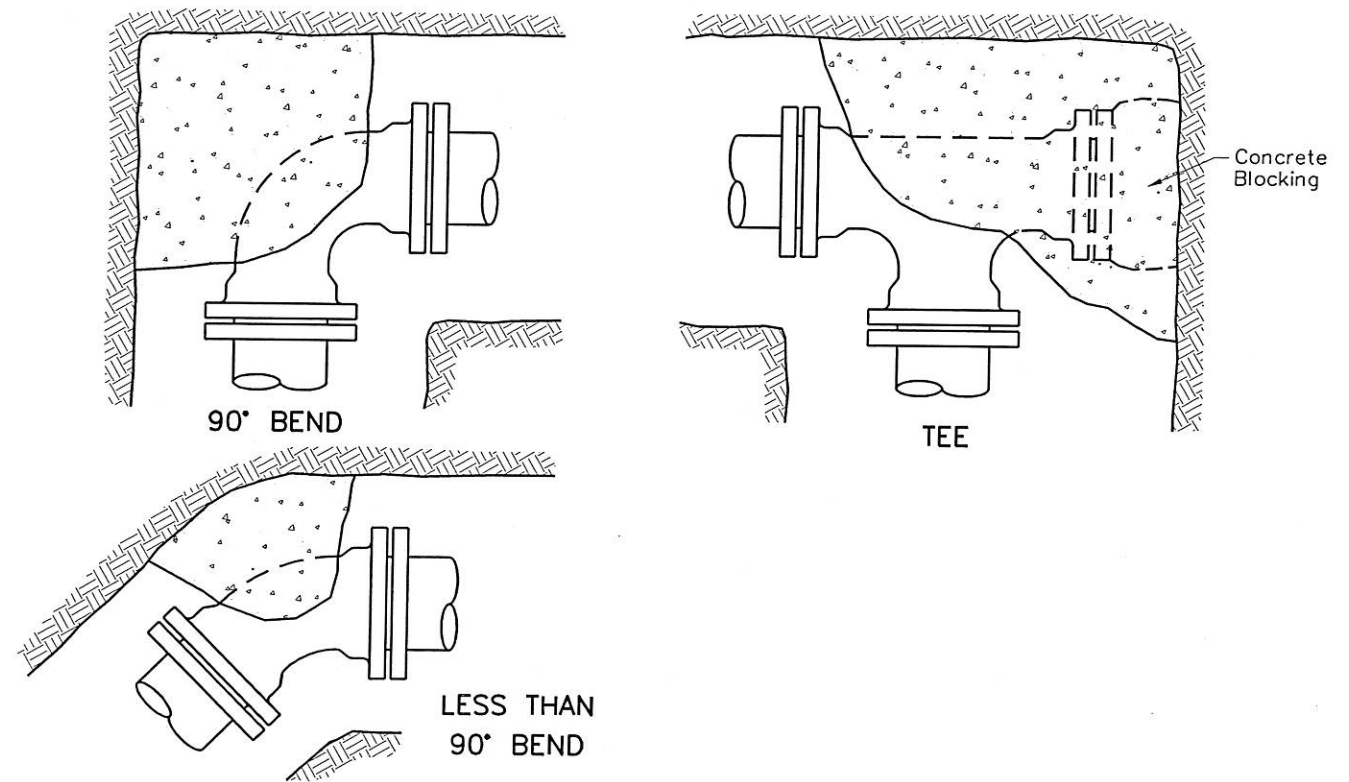
TABLE II  
MINIMUM THRUST BLOCK AREAS REQUIRED AT PIPE BENDS AND PLUGS UNDER VARIOUS INTERNAL PRESSURES IN GRANULAR SOILS WITH A SAFE BEARING LOAD OF 2,000 P.S.F.

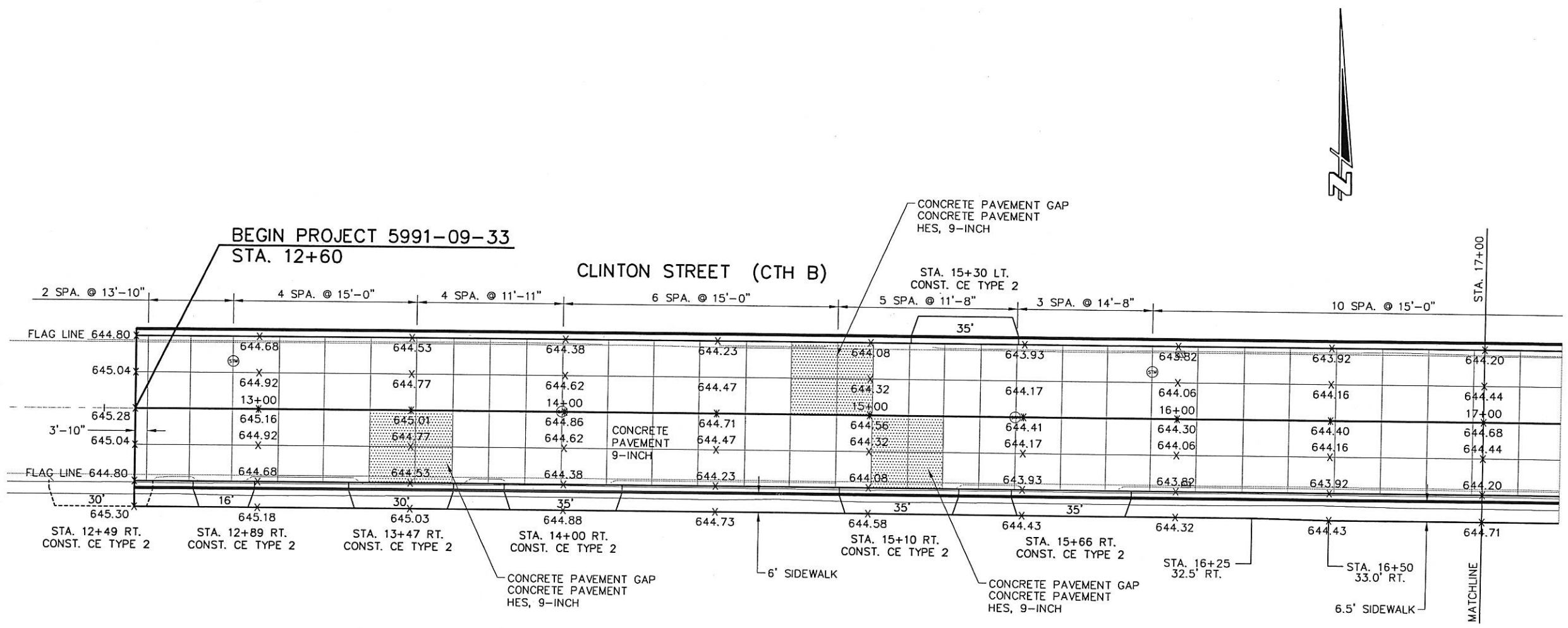
PIPE ID IN.	THRUST BLOCK AREA - SQ. FT.							
	PLUG	90 DEG. BEND	60 DEG. BEND	45 DEG. BEND	30 DEG. BEND	22 1/2' BEND	11 1/2' BEND	5 5/8' BEND
60-PSIG INTERNAL PRESSURE								
4	2	2	2	2	2	2	2	2
6	2	2	2	2	2	2	2	2
8	2	2	2	2	2	2	2	2
10	2	3	2	2	2	2	2	2
12	3	4	3	2	2	2	2	2

NOTE:  
The above tables are based on 60-p.s.i. internal pressure. In locations where pressures are greater than 60-p.s.i., tables shall be prorated to meet field conditions.

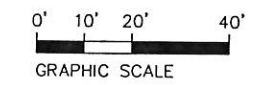
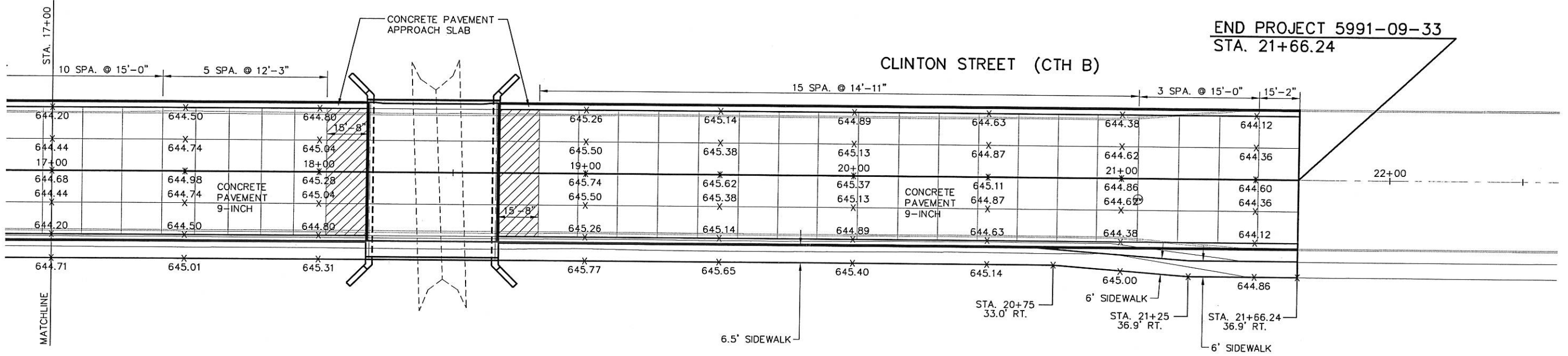


COPPER WATER SERVICE CONNECTION

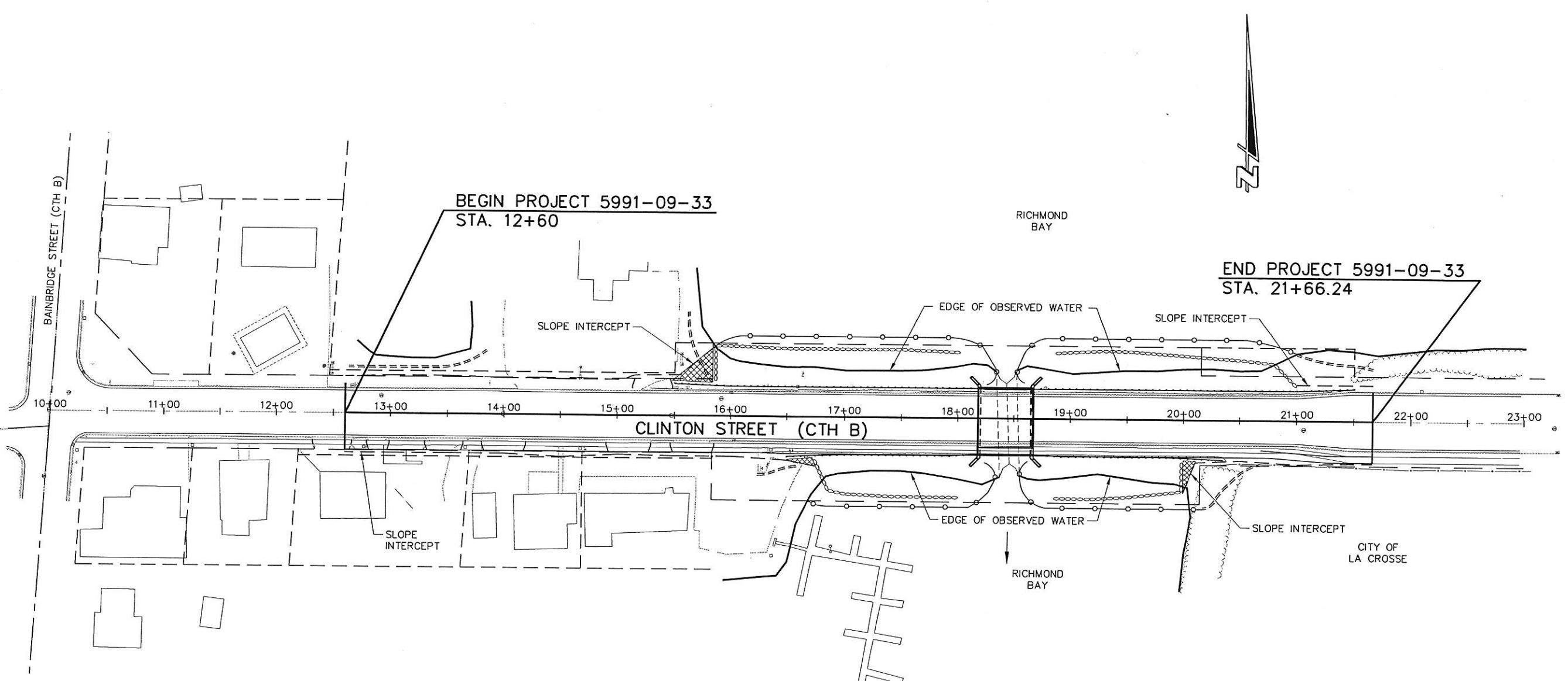




I:\Clients\W1819 WDOT District 5\130 Clinton Street Town of Campbell\dwg\pavingdet.dwg 01/14/2004 04:54:04 PM CST



I:\Clients\W1819 WDOT District 5\130 Clinton Street Town of Campbell\dwg\pavingdet.dwg 01/14/2004 04:54:04 PM CST



**LEGEND**

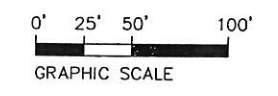
=====	SILT FENCE
—○—○—○—	TURBIDITY BARRIER
⊖⊖⊖	HEAVY RIPRAP OVER GEOTEXTILE FABRIC TYPE HR
⊗⊗⊗	EROSION MAT CLASS 1, TYPE B

**GENERAL NOTES FOR EROSION CONTROL**

ALL SILT FENCE AND TURBIDITY BARRIER SHALL BE INSTALLED PRIOR TO CONSTRUCTION START UP UNLESS NOTED OTHERWISE.

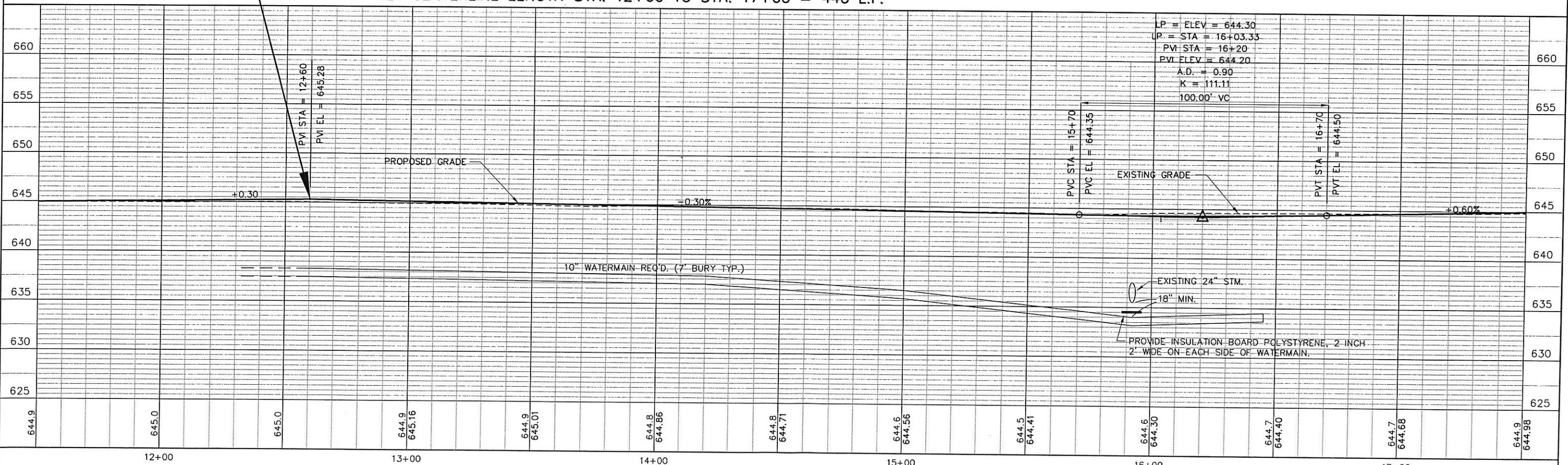
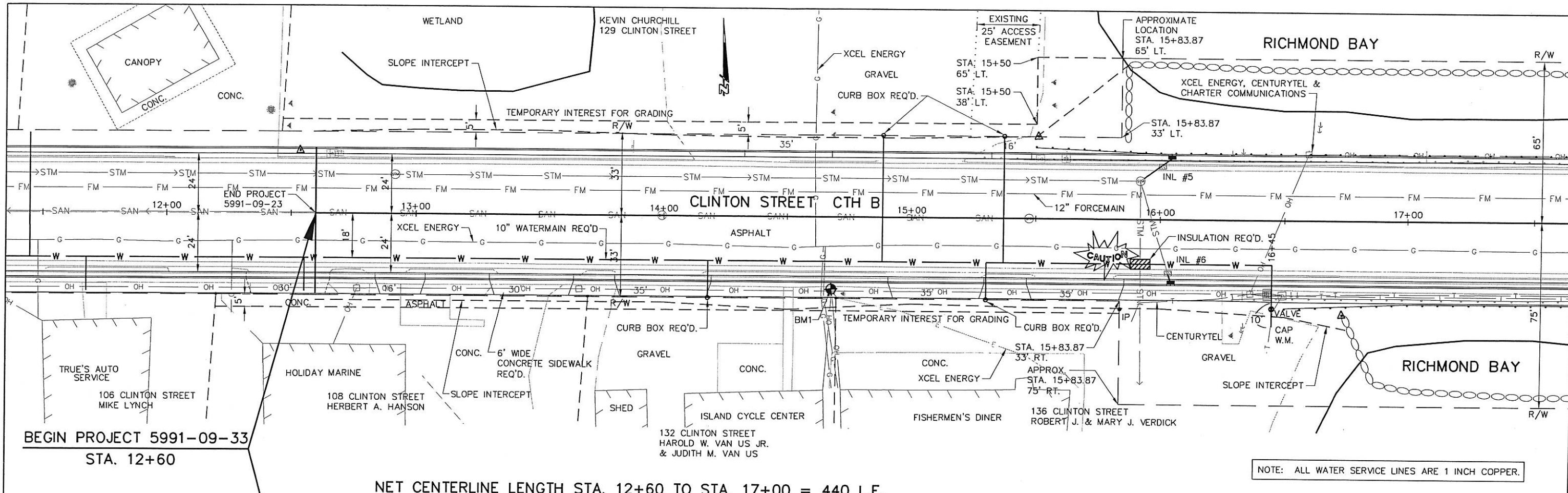
EROSION MAT CLASS 1 TYPE B SHALL BE USED TO STABILIZE SLOPED AREAS PER THE EROSION CONTROL PLAN OR AS DIRECTED BY THE ENGINEER.

SEED AND FERTILIZE DISTURBED AREAS OUT TO SLOPE INTERCEPTS. MULCH AREAS NOT CONTAINING EROSION MAT.



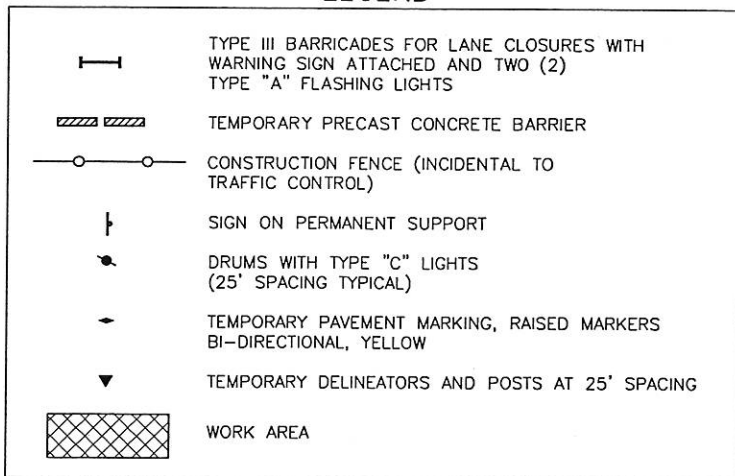
I:\Clients\W1819 WDOT District 5\130 Clinton Street Town of Campbell\dwg\clintonErosion.dwg 01/14/2004 04:57:02 PM CST





644.9	645.0	645.0	644.9 645.16	644.9 645.01	644.8 644.86	644.8 644.71	644.6 644.56	644.5 644.41	644.6 644.30	644.7 644.40	644.7 644.66	644.9 644.98
12+00		13+00			14+00		15+00		16+00		17+00	

**LEGEND**



**NOTES:**

1. ALL SIGNS AND DEVICES SHALL BE IN CONFORMANCE WITH THE WISCONSIN MANUAL OF TRAFFIC CONTROL DEVICES (WMTCD).
2. THE EXACT NUMBER, LOCATION AND SPACING OF ALL SIGNS AND DEVICES MAY BE ADJUSTED TO FIT FIELD CONDITIONS AS DIRECTED BY THE ENGINEER.
3. DURING HOURS OF DARKNESS, ALL BARRICADES USED TO SHIELD A HAZARD SHALL BE EQUIPPED WITH TYPE "A" (LOW-INTENSITY) FLASHING LIGHTS.
4. ALL SIGNS ARE 48" x 48" UNLESS OTHERWISE NOTED.
5. ALL SIGNS INAPPROPRIATE TO THE STATUS OF THE CONTROL ZONE INCLUDING PRE-EXISTING SIGNING IN THE VICINITY, SHALL BE COVERED OR REMOVED AS SPECIFIED IN THE PLANS AND/OR THE SPECIAL PROVISIONS, OR AS DIRECTED BY THE ENGINEER.

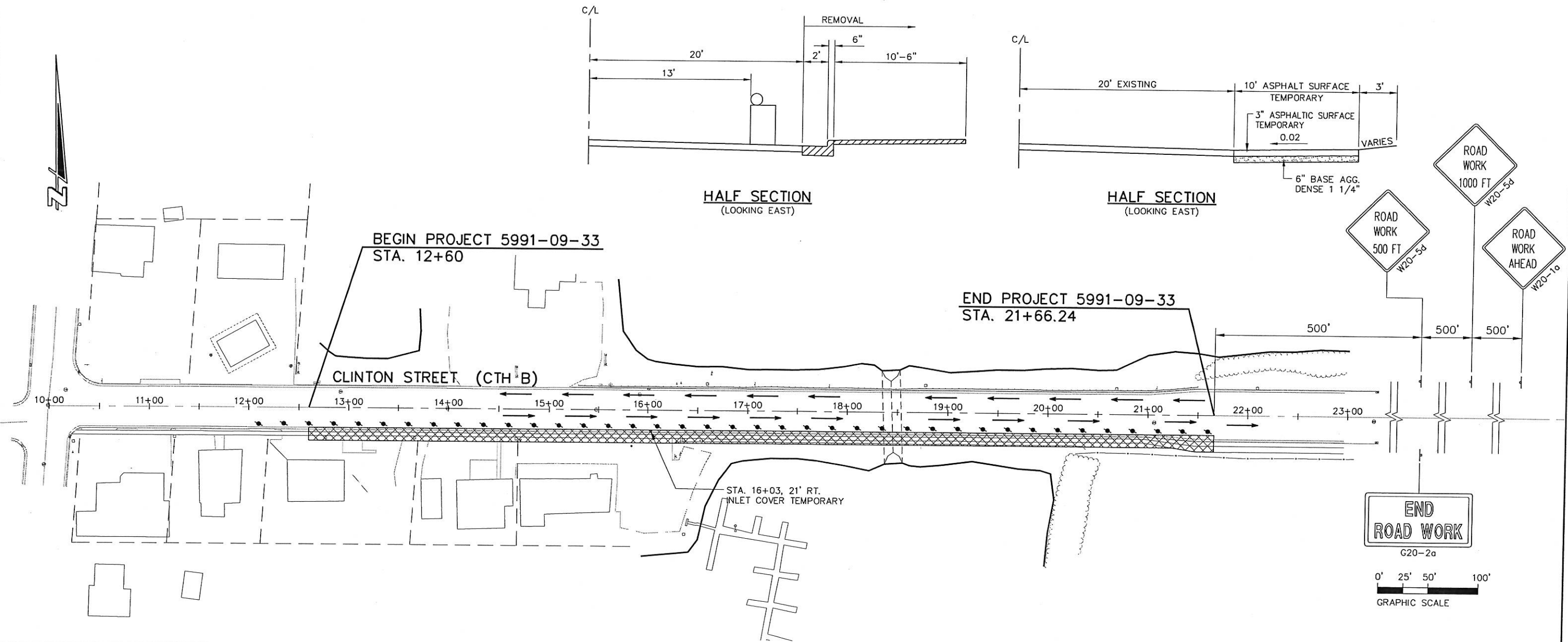
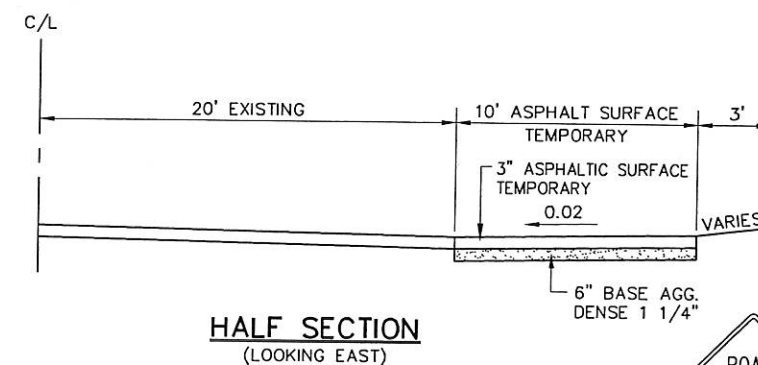
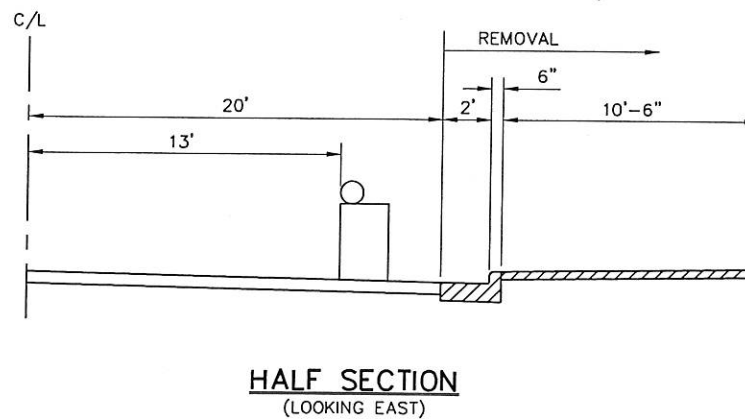
**STAGE 1**

REMOVE CURB & GUTTER AND SIDEWALK ON THE SOUTH SIDE OF CLINTON STREET FROM STA. 12+60 TO STA. 21+66.24.

CONSTRUCT TEMPORARY ASPHALTIC SURFACE WIDENING ON THE SOUTH SIDE OF CLINTON STREET FROM STA. 12+60 TO STA. 21+66.24.

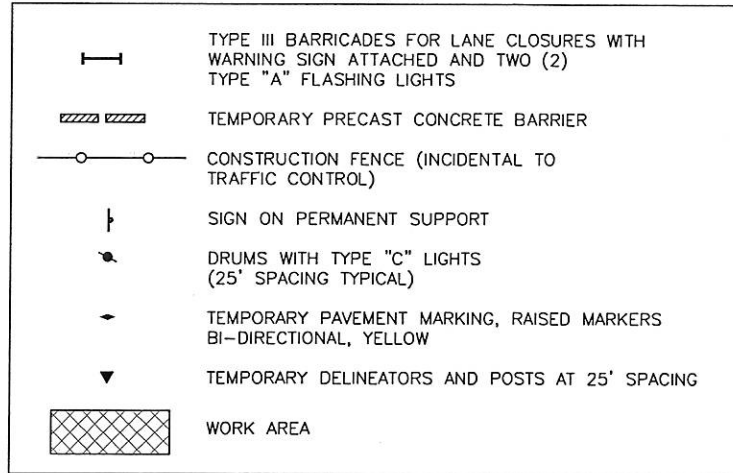
INSTALL TEMPORARY BEAM GUARD FROM STA. 16+25 TO STA. 20+40 RIGHT.

ACCESS MUST BE MAINTAINED TO EACH BUSINESS IN THE CONSTRUCTION AREA (TO BE DETERMINED BY ENGINEER).



I:\Clients\W1819 WDOT District 5\130 Clinton Street Town of Campbell\dwg\clintontraffic.dwg 01/14/2004 04:58:34 PM CST

LEGEND



NOTES:

1. ALL SIGNS AND DEVICES SHALL BE IN CONFORMANCE WITH THE WISCONSIN MANUAL OF TRAFFIC CONTROL DEVICES (WMTCD).
2. THE EXACT NUMBER, LOCATION AND SPACING OF ALL SIGNS AND DEVICES MAY BE ADJUSTED TO FIT FIELD CONDITIONS AS DIRECTED BY THE ENGINEER.
3. DURING HOURS OF DARKNESS, ALL BARRICADES USED TO SHIELD A HAZARD SHALL BE EQUIPPED WITH TYPE "A" (LOW-INTENSITY) FLASHING LIGHTS.
4. ALL SIGNS ARE 48" x 48" UNLESS OTHERWISE NOTED.
5. ALL SIGNS INAPPROPRIATE TO THE STATUS OF THE CONTROL ZONE INCLUDING PRE-EXISTING SIGNING IN THE VICINITY, SHALL BE COVERED OR REMOVED AS SPECIFIED IN THE PLANS AND/OR THE SPECIAL PROVISIONS, OR AS DIRECTED BY THE ENGINEER.

STAGE 2

ROUTE 2-WAY TRAFFIC ON THE SOUTH SIDE OF CLINTON STREET.

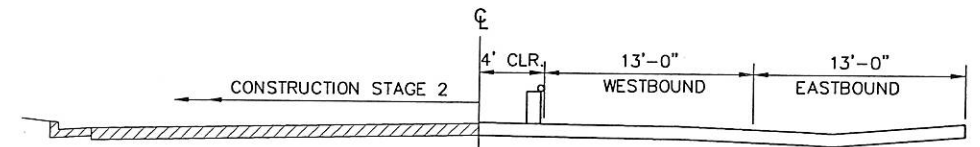
CONSTRUCT NORTH HALF OF STRUCTURE B-32-211.

REMOVE CURB & GUTTER AND ASPHALT SURFACE ON THE NORTH SIDE OF CLINTON STREET FROM STA. 12+60 TO STA. 21+66.24.

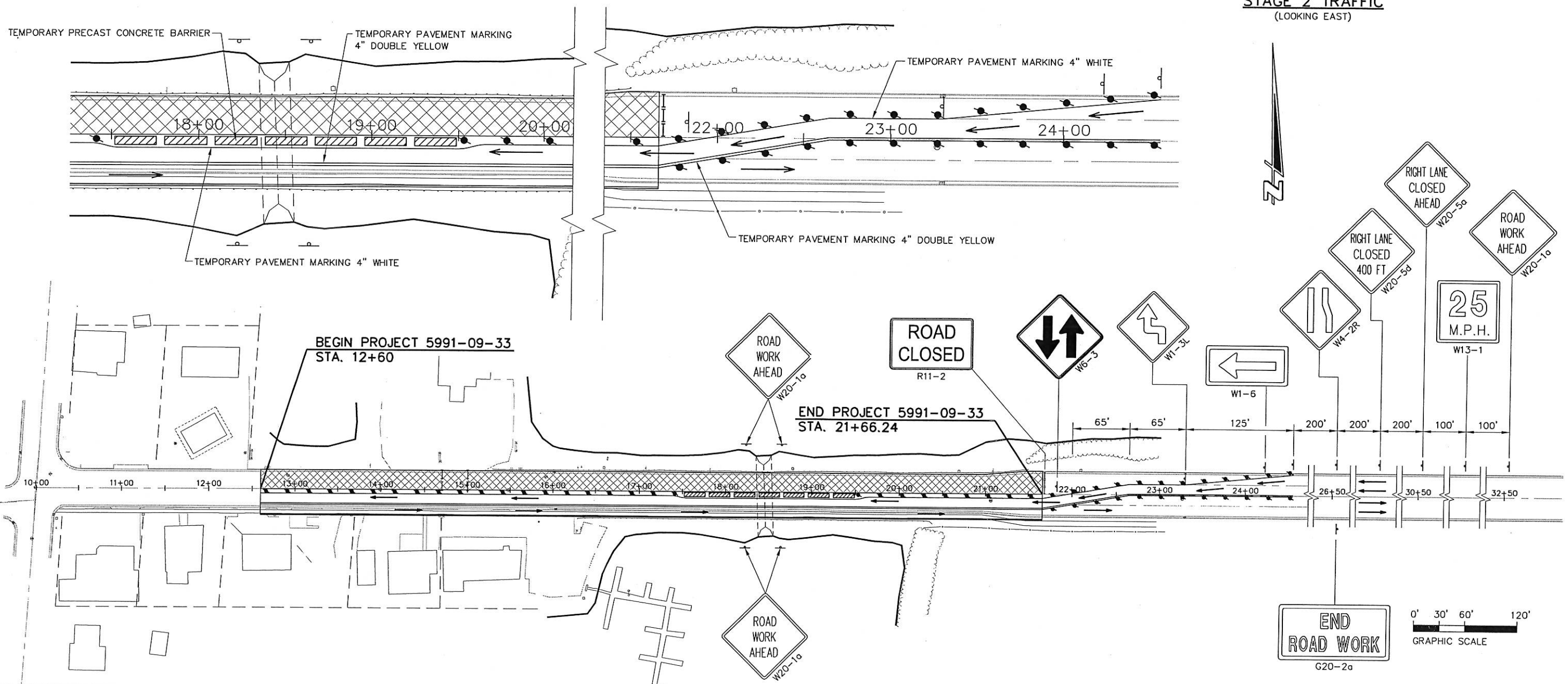
CONSTRUCT WATER SERVICE LATERALS ON THE NORTH SIDE OF CLINTON STREET.

CONSTRUCT BASE COURSE, CURB & GUTTER, CONCRETE PAVEMENT, RIPRAP AND BEAM GUARD.

ACCESS MUST BE MAINTAINED TO EACH BUSINESS IN THE CONSTRUCTION AREA (TO BE DETERMINED BY THE ENGINEER).

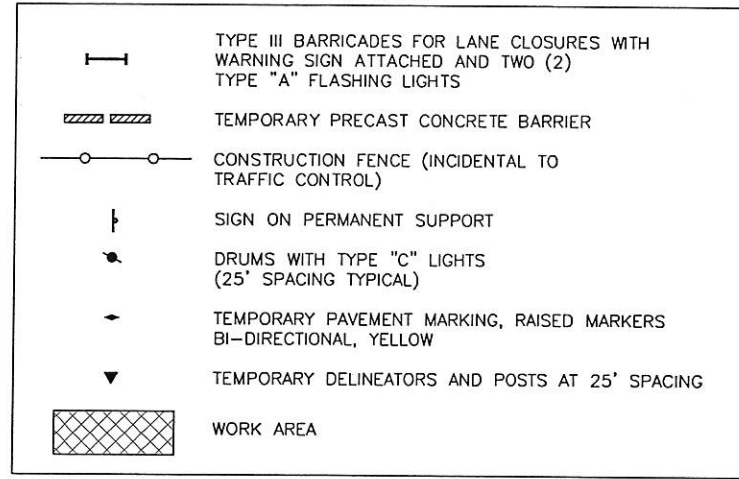


STAGE 2 TRAFFIC (LOOKING EAST)



I:\Clients\W1819 WDOT District 5\130 Clinton Street Town of Campbell\dwg\clintontraffic.dwg 01/14/2004 04:58:34 PM CST

### LEGEND



### NOTES:

1. ALL SIGNS AND DEVICES SHALL BE IN CONFORMANCE WITH THE WISCONSIN MANUAL OF TRAFFIC CONTROL DEVICES (WMTCD).
2. THE EXACT NUMBER, LOCATION AND SPACING OF ALL SIGNS AND DEVICES MAY BE ADJUSTED TO FIT FIELD CONDITIONS AS DIRECTED BY THE ENGINEER.
3. DURING HOURS OF DARKNESS, ALL BARRICADES USED TO SHIELD A HAZARD SHALL BE EQUIPPED WITH TYPE "A" (LOW-INTENSITY) FLASHING LIGHTS.
4. ALL SIGNS ARE 48" x 48" UNLESS OTHERWISE NOTED.
5. ALL SIGNS INAPPROPRIATE TO THE STATUS OF THE CONTROL ZONE INCLUDING PRE-EXISTING SIGNING IN THE VICINITY, SHALL BE COVERED OR REMOVED AS SPECIFIED IN THE PLANS AND/OR THE SPECIAL PROVISIONS, OR AS DIRECTED BY THE ENGINEER.

### STAGE 3

ROUTE 2-WAY TRAFFIC ON THE NORTH SIDE OF CLINTON STREET.

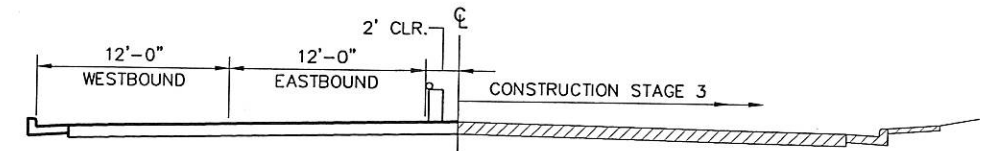
CONSTRUCT SOUTH HALF OF STRUCTURE B-32-211.

REMOVE ASPHALT SURFACE ON THE SOUTH SIDE OF CLINTON STREET FROM STA. 12+60 TO STA. 21+66.24.

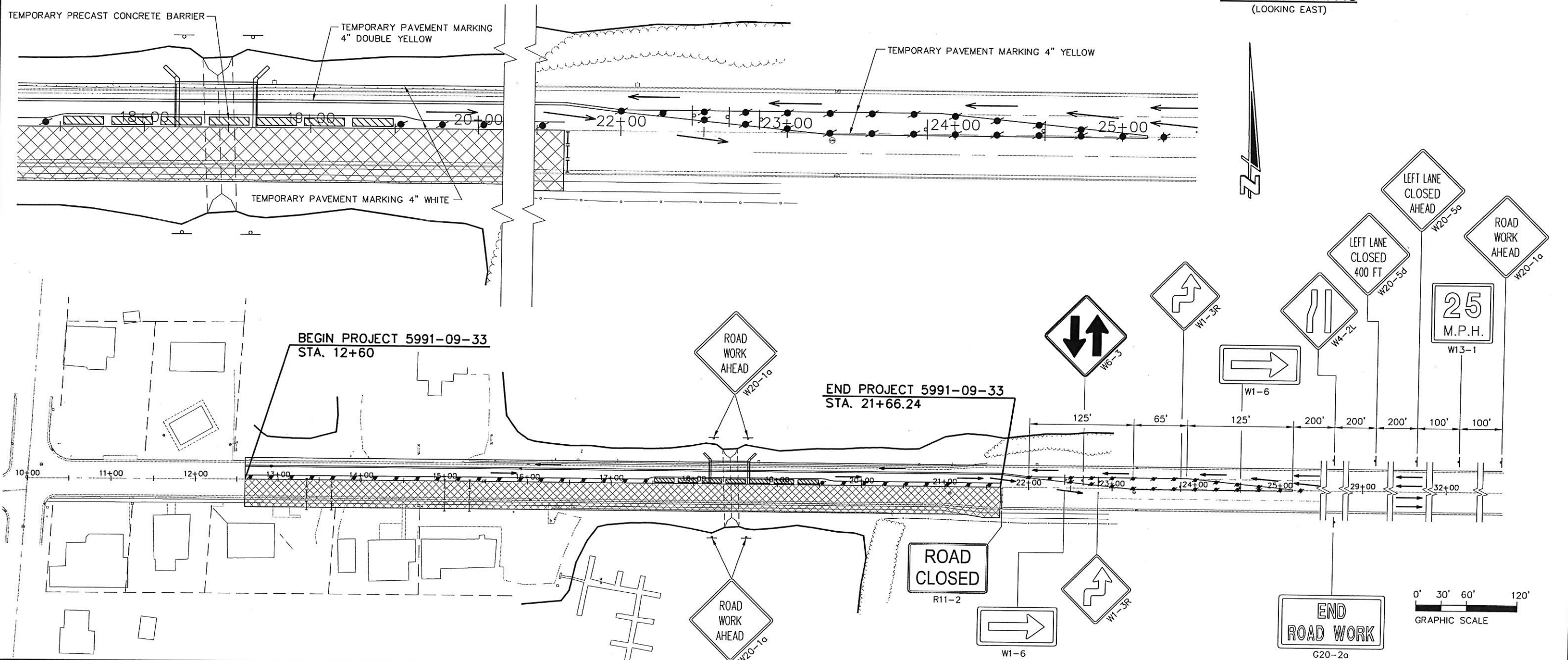
CONSTRUCT BASE COURSE, CURB & GUTTER, CONCRETE PAVEMENT, RIPRAP, CONCRETE SIDEWALK AND BEAM GUARD.

CONSTRUCT WATERMAIN ON THE SOUTH SIDE OF CLINTON STREET.

ACCESS MUST BE MAINTAINED TO EACH BUSINESS IN THE CONSTRUCTION AREA (TO BE DETERMINED BY THE ENGINEER).

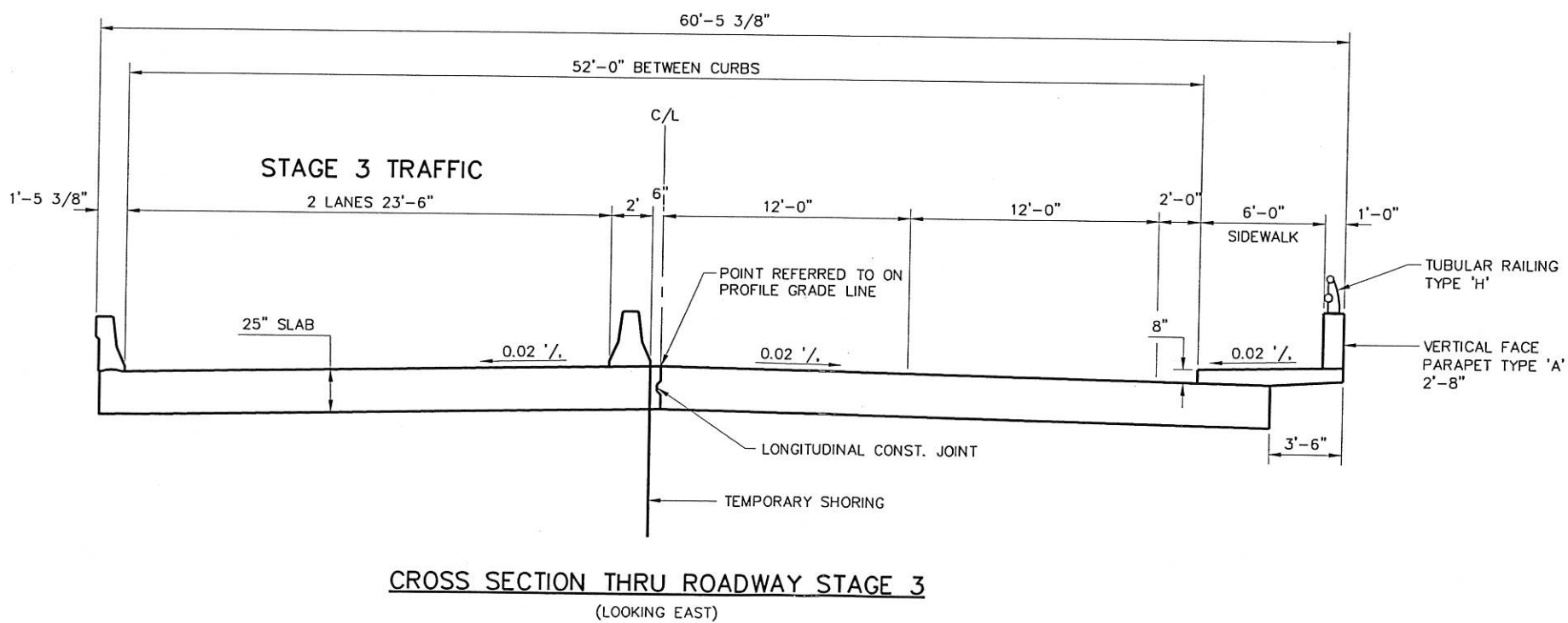
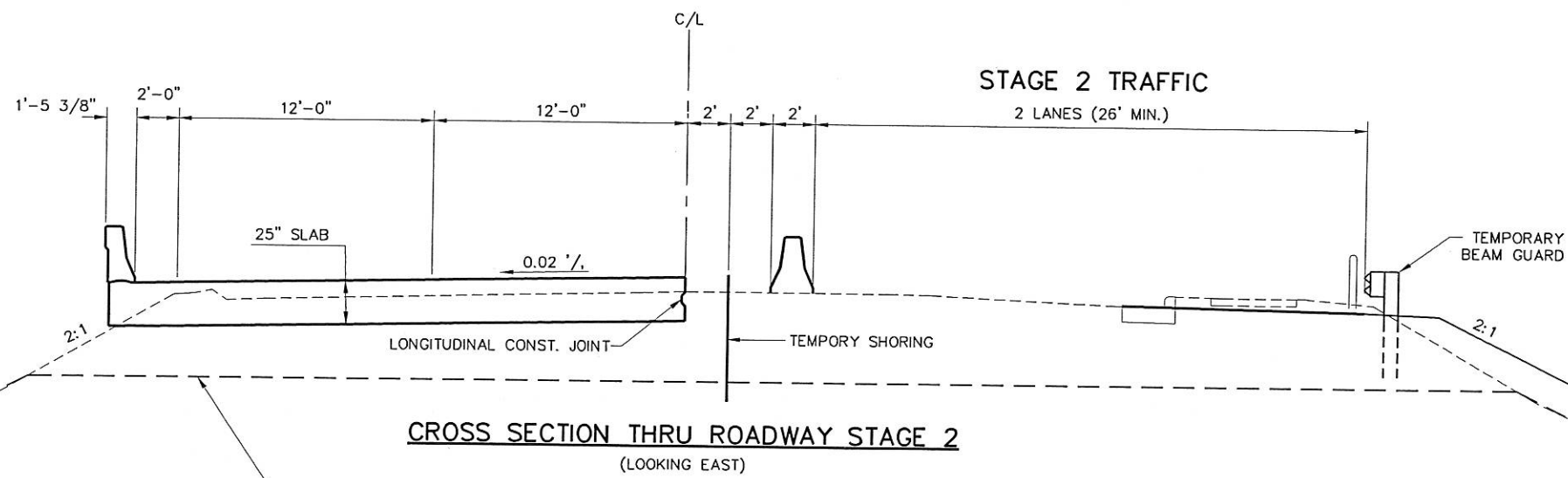


STAGE 3 TRAFFIC (LOOKING EAST)



I:\Clients\W1819 WDOT District 5\130 Clinton Street Town of Campbell\dwg\clintontraffic.dwg 01/14/2004 04:58:34 PM CST

NOTE: EXISTING CURB & GUTTER, CABLE GUARD FENCE AND SIDEWALK ON THE SOUTH SIDE OF CLINTON STREET WILL BE REMOVED AND REPLACED WITH TEMPORARY ASPHALT DURING STAGE 1.



COORDINATES

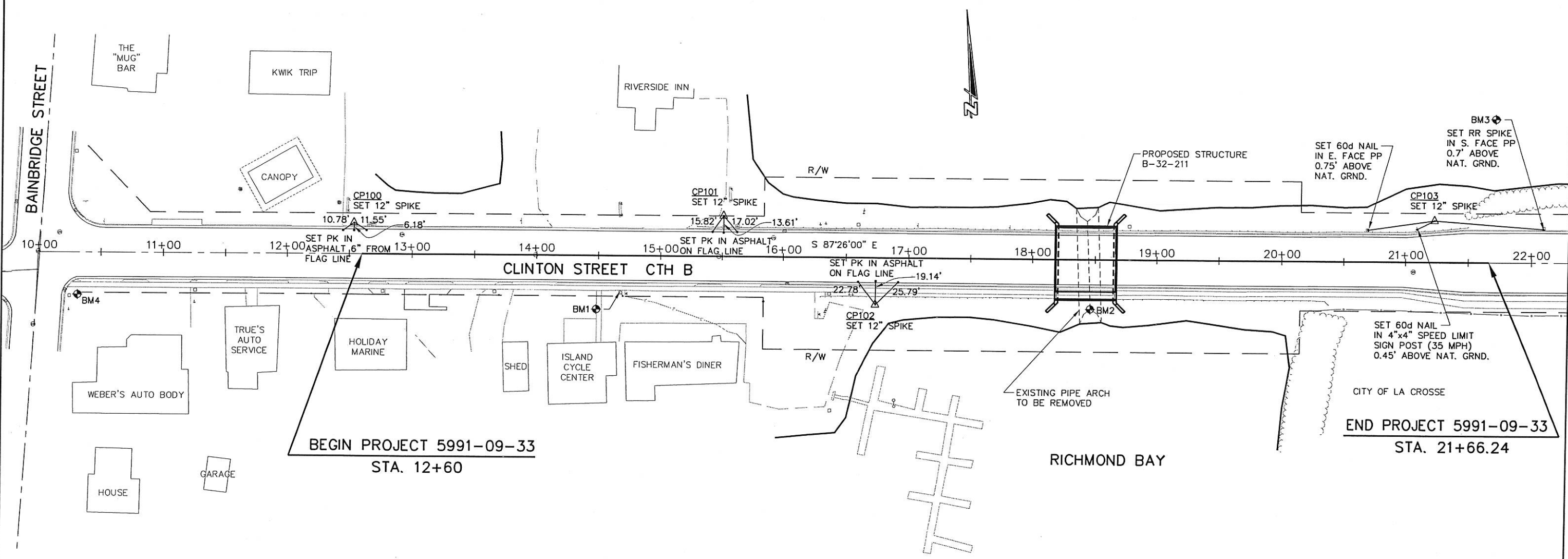
DESCRIPTION	STATION	LOCATION	Y (NORTH)	X (EAST)
CP100	12+53.59	25.25' LT. OF C/L	205569.01	496625.81
CP101	15+50.80	33.04' LT. OF C/L	205563.48	496923.07
BEGIN PROJECT	12+60	C/L	205543.49	496631.08
CP102	16+73.34	38.05' RT. OF C/L	205486.97	497042.30
CP103	21+22.91	33.81' LT. OF C/L	205538.64	497494.64
END PROJECT	21+66.24	C/L	205502.92	497536.41

BENCHMARKS			
NO.	STA.	DESCRIPTION	ELEV.
1	14+68±	29' RT. SET RR SPIKE IN N. FACE POWER POLE	645.87
2	18+46±	40' RT. TOP OF S. BOLT ON PIPE ARCH	640.81
3	22+09±	27' LT. SET RR SPIKE IN S. FACE POWER POLE	645.04
4	10+31±	34.4' RT. W. BOLT ON OLD SIGN BASE PLATE	645.14

ORIGIN OF LEVELS (BM4)

WEST BOLT ON OLD SIGN BASE PLATE  
AT WEBER'S, INTERSECTION OF BAINBRIDGE AND CLINTON  
EL. 645.14 (USGS DATUM NGVD 1929)

NOTE: COORDINATES AND BEARINGS ON THIS PLAN ARE ORIENTED TO THE WISCONSIN COUNTY COORDINATE SYSTEM (WCCS), LA CROSSE COUNTY.



I:\Clients\W1819 WDOT District 5\130 Clinton Street Town of Campbell\dwg\clintoncties.dwg 01/14/2004 05:00:16 PM CST

REMOVING PAVEMENT

STATION TO STATION	LOCATION	S.Y.
21+00 - 21+66.24	EAST APPROACH	320

REMOVING CURB AND GUTTER

STATION TO STATION	LOCATION	L.F.
12+60 - 21+66.24	LEFT & RIGHT	1812

REMOVING CONCRETE SIDEWALK

STATION TO STATION	LOCATION	S.Y.
12+60 - 21+00	RIGHT	375
21+00 - 21+66.24	RIGHT	37
ENTRANCES	RIGHT	108
TOTAL		520

REMOVING GUARDRAIL

STATION TO STATION	LOCATION	L.F.
15+25 - 21+50	LEFT	625
16+25 - 20+40	RIGHT	415
TOTAL		1040

REMOVING INLETS

STATION	LOCATION	EACH
16+00	LEFT	1
16+03	RIGHT	1
TOTAL		2

REMOVING STORM SEWER, 12-INCH

STATION	LOCATION	L.F.
16+00	LEFT	20
16+03	RIGHT	8
TOTAL		28

EXCAVATION COMMON

STATION TO STATION	LOCATION	C.Y.
12+60 - 18+18	W. APPROACH	1595
18+67 - 21+66.24	E. APPROACH	655
TOTAL		2250

BASE AGGREGATE DENSE 3/4-INCH

STATION TO STATION	LOCATION	TON
14+15 - 15+12	LEFT	25
14+42 - 16+20	RIGHT	40
TOTAL		85

BASE AGGREGATE DENSE 1-1/4-INCH

STATION TO STATION	LOCATION	TON
12+60 - 18+18	E. APPROACH	1260
18+67 - 21+66.24	W. APPROACH	676
12+49	C.E. RIGHT	2
12+89	C.E. RIGHT	6
13+47	C.E. RIGHT	9
14+00	C.E. RIGHT	10
15+10	C.E. RIGHT	10
15+30	C.E. LEFT	17
15+66	C.E. RIGHT	15
12+60 - 21+66.24	TEMPORARY RIGHT	435
TOTAL		2440

CONCRETE PAVEMENT 9-INCH

STATION TO STATION	LOCATION	S.Y.
12+60 - 18+02.75	E. APPROACH	2690
18+82.25 - 21+66.24	W. APPROACH	1515
TOTAL		4205

CONCRETE PAVEMENT HES 9-INCH

STATION TO STATION	LOCATION	S.Y.
13+36.5 - 13+63.4	RIGHT	72
14+74.2 - 15+00.8	LEFT	71
15+00.8 - 15+24.2	RIGHT	62
TOTAL		205

CONCRETE PAVEMENT APPROACH SLAB

STATION TO STATION	LOCATION	S.Y.
18+02.75 - 18+18.42	E. APPROACH	84
18+66.58 - 18+82.25	W. APPROACH	84
TOTAL		168

CONCRETE DRIVEWAY 6-INCH

STATION	LOCATION	S.Y.
12+49	C.E. RIGHT	5
12+89	C.E. RIGHT	15
14+00	C.E. RIGHT	30
15+10	C.E. RIGHT	30
TOTAL		80

CONCRETE DRIVEWAY HES 6-INCH

STATION TO STATION	LOCATION	S.Y.
13+47	C.E. RIGHT	25
15+30	C.E. LEFT	29
15+66	C.E. RIGHT	42
TOTAL		96

PAVEMENT DOWEL BARS

STATION	LOCATION	EACH
21+66	MAINLINE	32

CONCRETE PAVEMENT GAPS

STATION TO STATION	LOCATION	EA.
13+36.5 - 13+63.4	RIGHT	1
14+74.2 - 15+00.8	LEFT	1
15+00.8 - 15+24.2	RIGHT	1
TOTAL		3

EXCEPT WHERE NOTED  
ALL CATEGORIES ARE 0010

**ASPHALTIC SURFACE TEMPORARY**

STATION TO STATION	LOCATION	TONS
12+60 - 21+66	RIGHT	180

**CONCRETE CURB AND GUTTER 30-INCH TYPE A**

STATION TO STATION	LOCATION	L.F.
12+60 - 18+18	LEFT	560
12+60 - 18+18	RIGHT	560
18+68 - 21+66	LEFT	300
18+68 - 21+66	RIGHT	300
TOTAL		1720

**CONCRETE SIDEWALK 4-INCH**

STATION TO STATION	LOCATION	4-INCH S.F.
12+66 - 12+78	RIGHT	70
12+99 - 13+29	RIGHT	180
13+64 - 13+80	RIGHT	94
14+20 - 14+90	RIGHT	420
15+30 - 15+46	RIGHT	96
15+86 - 18+18.42	RIGHT	1485
18+66.58 - 21+66.24	RIGHT	1915
TOTAL		4260

**CONCRETE BARRIER TEMPORARY PRECAST**

STATION TO STATION	LOCATION	CONTRACTOR FURNISHED & DELIVERED L.F.	CONTRACTOR FURNISHED & INSTALLED L.F.
17+25 - 19+25	RIGHT	250	250
17+25 - 19+25	LEFT		250
TOTAL		250	500

**RIPRAP HEAVY**

STATION - STATION	LOCATION	C.Y.
16+00 - 18+00	LEFT & RIGHT	910
18+86 - 21+00	LEFT & RIGHT	870
TOTAL		1780

**STORM SEWER PIPE REINFORCED CONCRETE CLASS III 12-INCH**

STATION TO STATION	LOCATION	L.F.
15+92, LT. - 16+04, LT.	MH 5 - INL 5	16
15+92, LT. - 16+04, RT.	MH 5 - INL 6	8
TOTAL		24

**INLETS TYPE 3**

STATION	LOCATION	EACH	REMARK
16+04	25' LT.	1	INLET 5
16+04	25' RT.	1	INLET 6
TOTAL		2	

**ADJUSTING MANHOLE COVERS**

STATION	LOCATION	CATEGORY 0010 EACH	CATEGORY 0030 EACH	REMARK
12+92	15.5' LT.	1		STORM SEWER
15+92	15.5' LT.	1		STORM SEWER
21+06	7.0' RT.	1		STORM SEWER
14+00	C/L		1	SANITARY
15+48	C/L		1	SANITARY
CATEGORY 0010 TOTAL		3		
CATEGORY 0030 TOTAL			2	

**INLET COVERS TYPE HS**

STATION	LOCATION	EACH
16+04	25' LT.	1
16+04	25' RT.	1
TOTAL		2

**INLET COVER TEMPORARY, ITEM SPV.0060.08**

STATION	LOCATION	EACH
16+03	21' RT.	1

**STEEL PLATE BEAM GUARD**

STATION TO STATION	LOCATION	STEEL THRIE BEAM STRUCT. APPROACH L.F.	STEEL PLATE BEAM GUARD CLASS A L.F.	STEEL PLATE BEAM GUARD ENERGY ABSORBING TERMINAL EACH	STEEL PLATE BEAM GUARD TEMPORARY L.F.	STEEL PLATE BEAM GUARD ENERGY ABSORBING TERMINAL TEMPORARY EACH
16+25 - 20+25	RIGHT				300	2
15+50 - 18+21	LEFT	33	188	1		
16+50 - 18+21	RIGHT	33	88	1		
18+64 - 21+47	LEFT	33	200	1		
18+64 - 20+35	RIGHT	33	88	1		
TOTAL		132	564	4	300	2

**SALVAGED TOPSOIL**

STATION TO STATION	LOCATION	SALVAGED TOPSOIL S.Y.
12+60 - 18+18	LEFT & RIGHT	405
18+67 - 21+66	LEFT & RIGHT	225
TOTAL		630

**MULCHING**

STATION TO STATION	LOCATION	MULCHING S.Y.
12+60 - 18+18	LEFT & RIGHT	335
18+67 - 21+66	LEFT & RIGHT	205
TOTAL		540

**SILT FENCE**

STATION TO STATION	LOCATION	DELIVERED L.F.	INSTALLED L.F.	MAINTENANCE L.F.
12+60 - 14+00	LEFT	125	125	125
15+50 - 16+00	LEFT	70	70	70
16+25 - 16+50	RIGHT	40	40	40
20+25 - 20+75	RIGHT	70	70	70
21+00 - 21+65	LEFT	70	70	70
TOTAL		375	375	375

EXCEPT WHERE NOTED ALL CATEGORIES ARE 0010



**EROSION MAT CLASS 1 TYPE B**

STATION TO STATION	LOCATION	DELIVERED S.Y.	INSTALLED S.Y.
15+50 - 15+80	LEFT	55	55
16+50 - 16+75	RIGHT	15	15
20+00 - 20+10	RIGHT	20	20
TOTAL		90	90

**TURBIDITY BARRIERS**

STATION TO STATION	LOCATION	S.Y.
15+80 - 18+35	LT. & RT.	560
18+50 - 20+80	LT. & RT.	530
TOTAL		1090

**INLET PROTECTION TYPE A**

STATION	LOCATION	EACH
16+04	25' LT.	1
16+04	25' RT.	1
TOTAL		2

**SEEDING, FERTILIZER**

STATION TO STATION	LOCATION	SEEDING TEMPORARY LB	SEEDING MIXTURE NO. 40 LB	FERTILIZER TYPE B CWT
12+60 - 18+18	LT. & RT.	5	7	0.3
18+67 - 21+66	LT. & RT.	5	4	0.2
TOTAL		10	11	0.5

**MOVING SIGNS TYPE II**

STATION	LOCATION	EACH
13+87	28' LT.	1
15+62	25' LT.	1
16+33	30' RT.	1
17+82	25' LT.	1
21+08	27' LT.	1
TOTAL		5

**TRAFFIC CONTROL**

DRUMS			BARRICADES TYPE III			WARNING LIGHTS TYPE A			WARNING LIGHTS TYPE C			
NUMBER IN SERVICE	SERVICE PERIOD DAYS	PAY QUANT. DAYS	NUMBER IN SERVICE	SERVICE PERIOD DAYS	PAY QUANT. DAYS	NUMBER IN SERVICE	SERVICE PERIOD DAYS	PAY QUANT. DAYS	NUMBER IN SERVICE	SERVICE PERIOD DAYS	PAY QUANT. DAYS	
STAGE 1	40	10	400	0	0	0	0	0	40	10	400	
STAGE 2	55	63	3465	9	63	567	18	63	1134	55	63	3465
STAGE 3	54	62	3348	15	62	930	30	62	1860	54	62	3348
TOTAL		7213	1497		2994	7213						

**TRAFFIC CONTROL SIGNS**

	NUMBER IN SERVICE	SIGNS SERVICE PERIOD DAYS	PAY QUANT. DAYS
STAGE 1	4	10	40
STAGE 2	14	63	882
STAGE 3	16	62	992
TOTAL		1914	

**GEOTEXTILE FABRIC TYPE HR**

STATION - STATION	S.Y.
15+85 - 18+00	1540
18+86 - 21+00	1430
TOTAL	2970

**PAVEMENT MARKING EPOXY 4-INCH**

STATION TO STATION	LOCATION	WHITE L.F.	YELLOW L.F.	TOTAL
12+60 - 25+15	C/L DOUBLE YELLOW	0	2510	
12+60 - 21+66	LEFT EDGE LINE	906	0	
12+60 - 21+66	RIGHT EDGE LINE	906	0	
12+60 - 23+30	LT LANE MARKING	270	0	
12+60 - 21+66	RT LANE MARKING	228	0	
SUBTOTAL		2310	2510	TOTAL = 4820

**TEMPORARY PAVEMENT MARKING 4-INCH**

STATION TO STATION	LOCATION	WHITE L.F.	YELLOW L.F.	REMARKS
12+60 - 24+55	LT EDGE LINE	1195	0	STAGE 2
12+60 - 21+65	RT EDGE LINE	905	0	STAGE 2
12+60 - 24+55	C/L DOUBLE YELLOW	0	2390	STAGE 2
12+60 - 25+15	C/L DOUBLE YELLOW	0	2510	STAGE 3
12+60 - 22+65	LT & RT EDGE LINE	2010	0	STAGE 3
SUBTOTAL		4110	4900	TOTAL = 9010

**REMOVING PAVEMENT MARKINGS**

STATION TO STATION	LOCATION	L.F.	REMARKS
21+65 - 24+65	C/L DOUBLE YELLOW	600	STAGE 2
23+30 - 24+95	LT LANE MARKING	40	STAGE 2
21+65 - 24+55	LT EDGE MARKING	290	STAGE 3
21+65 - 23+25	C/L DOUBLE YELLOW	320	STAGE 3
12+60 - 22+15	C/L DOUBLE YELLOW	2510	STAGE 3
12+60 - 22+65	LT & RT EDGE MARKING	2010	STAGE 3
TOTAL		5770	

EXCEPT WHERE NOTED ALL CATEGORIES ARE 0010

INSULATION BOARD POLYSTYRENE, 2-INCH, ITEM 612.0902.S

STATION	LOCATION	S.Y.
16+45	18' RT.	3

GATE VALVE AND BOX 10-INCH, ITEM SPV.0060.04

STATION	LOCATION	EACH
16+45	35' RT.	1

CORPORATION STOP 1-INCH, ITEM SPV.0060.06

STATION	LOCATION	EACH
14+18	RT.	1
14+88	LT.	1
15+30	RT.	1
15+37	LT.	1
	TOTAL	4

CURB STOP AND BOX 1-INCH, ITEM SPV.0060.07

STATION	LOCATION	EACH
14+18	RT.	1
14+88	LT.	1
15+30	RT.	1
15+37	LT.	1
	TOTAL	4

FITTINGS FOR WATERMAIN, ITEM SPV.0085.01

ITEMS	LBS.
ENDCAPS, BENDS, TEE'S & GLANDS	405

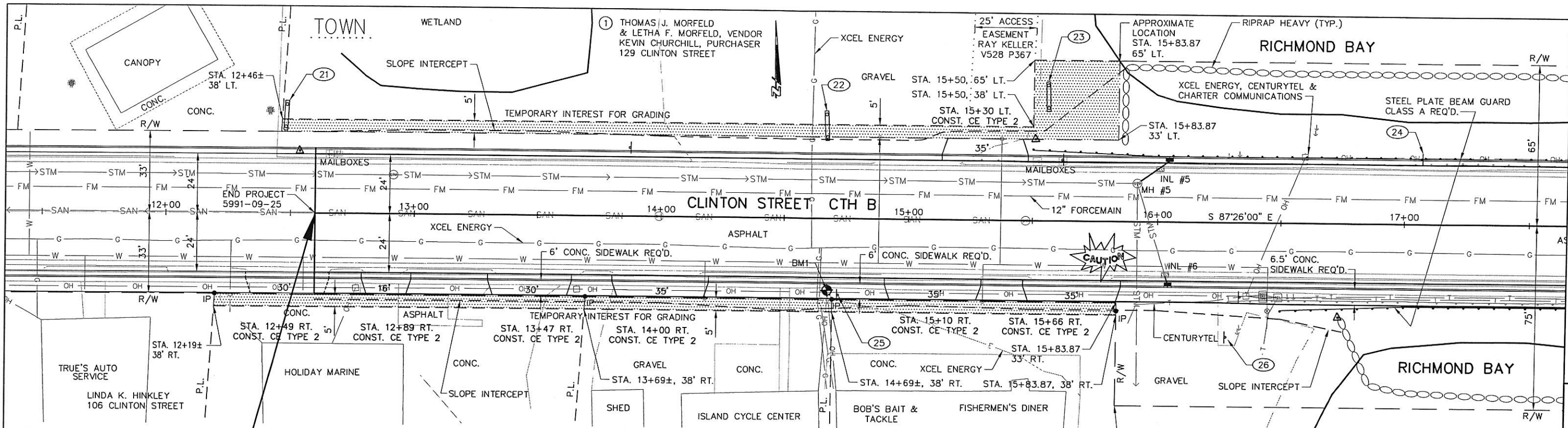
WATERMAIN 10-INCH DUCTILE IRON PIPE, ITEM SPV.0090.01

STATION TO STATION	LOCATION	L.F.
12+60 - 16+45	CLINTON STREET	410

COPPER SERVICE 1-INCH, ITEM SPV.0090.4

STATION	LOCATION	L.F.
14+18	RT.	15
14+88	LT.	50
15+30	RT.	15
15+37	LT.	50
	TOTAL	130

EXCEPT WHERE NOTED  
ALL CATEGORIES ARE 0030



BEGIN PROJECT 5991-09-33

STA. 12+60  
Y = 205,543.49  
X = 496,631.08

② LYNCH HOLDINGS LLC  
108 CLINTON STREET

③ HAROLD W. VAN US JR.  
& JUDITH M. VAN US  
132 CLINTON STREET

④ CATGUT SLOUGH  
PROPERTIES, LLC  
136 CLINTON STREET

NET CENTERLINE LENGTH STA. 12+60 TO STA. 17+00 = 440 L.F. OF CAMPBELL

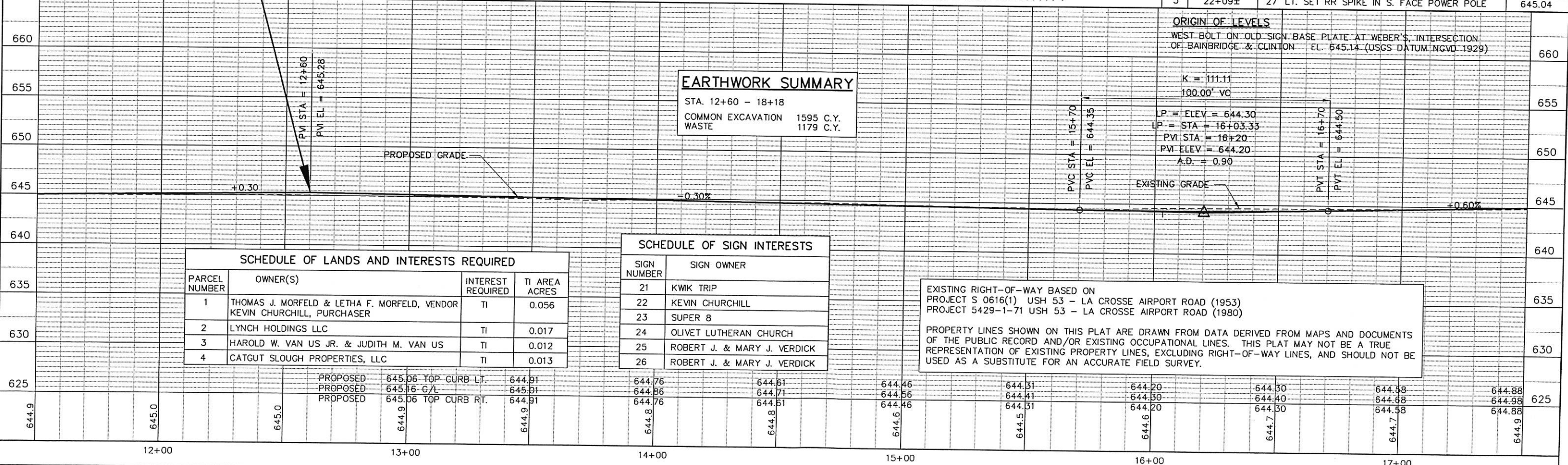
BENCHMARKS			
NO.	STA.	DESCRIPTION	ELEV.
1	14+68±	29' RT. SET RR SPIKE IN N. FACE POWER POLE	645.87
2	18+46±	40' RT. TOP OF S. BOLT ON PIPE ARCH	640.81
3	22+09±	27' LT. SET RR SPIKE IN S. FACE POWER POLE	645.04

**EARTHWORK SUMMARY**

STA. 12+60 - 18+18  
COMMON EXCAVATION 1595 C.Y.  
WASTE 1179 C.Y.

**ORIGIN OF LEVELS**  
WEST BOLT ON OLD SIGN BASE PLATE AT WEBER'S, INTERSECTION  
OF BAINBRIDGE & CLINTON EL. 645.14 (USGS DATUM NGVD 1929)

K = 111.11  
100.00' VC  
LP = ELEV = 644.30  
LP = STA = 16+03.33  
PVI STA = 16+20  
PVI ELEV = 644.20  
A.D. = 0.90



SCHEDULE OF LANDS AND INTERESTS REQUIRED			
PARCEL NUMBER	OWNER(S)	INTEREST REQUIRED	TI AREA ACRES
1	THOMAS J. MORFELD & LETHA F. MORFELD, VENDOR KEVIN CHURCHILL, PURCHASER	TI	0.056
2	LYNCH HOLDINGS LLC	TI	0.017
3	HAROLD W. VAN US JR. & JUDITH M. VAN US	TI	0.012
4	CATGUT SLOUGH PROPERTIES, LLC	TI	0.013

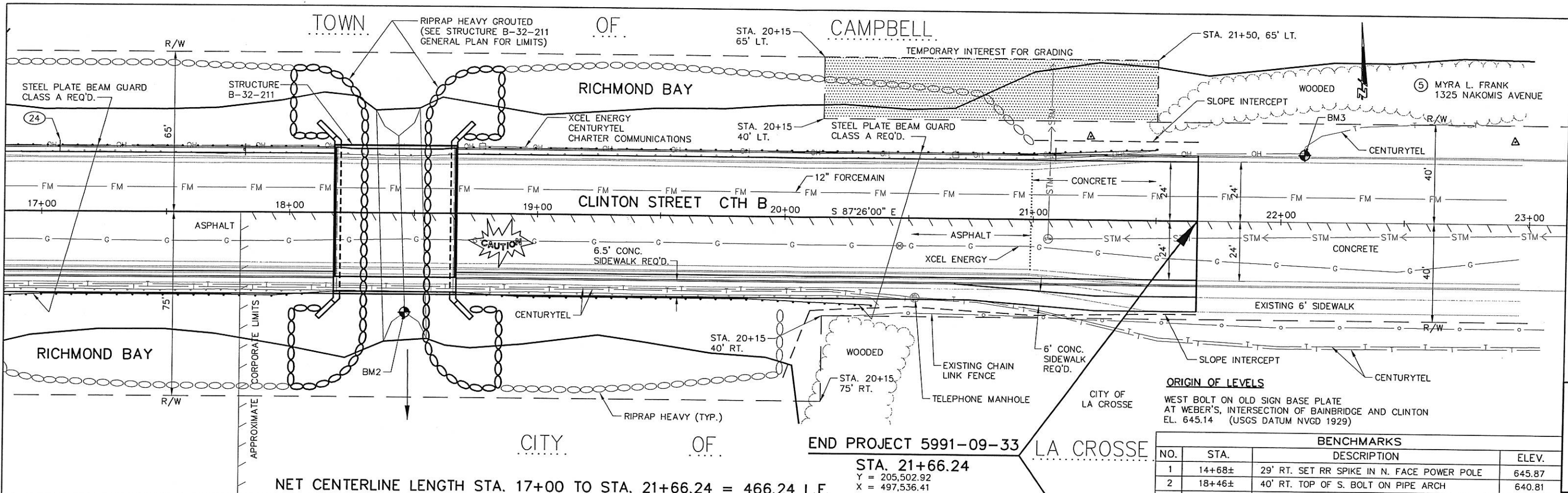
**SCHEDULE OF SIGN INTERESTS**

SIGN NUMBER	SIGN OWNER
21	KWIK TRIP
22	KEVIN CHURCHILL
23	SUPER 8
24	OLIVET LUTHERAN CHURCH
25	ROBERT J. & MARY J. VERDICK
26	ROBERT J. & MARY J. VERDICK

EXISTING RIGHT-OF-WAY BASED ON  
PROJECT S 0616(1) USH 53 - LA CROSSE AIRPORT ROAD (1953)  
PROJECT 5429-1-71 USH 53 - LA CROSSE AIRPORT ROAD (1980)

PROPERTY LINES SHOWN ON THIS PLAT ARE DRAWN FROM DATA DERIVED FROM MAPS AND DOCUMENTS OF THE PUBLIC RECORD AND/OR EXISTING OCCUPATIONAL LINES. THIS PLAT MAY NOT BE A TRUE REPRESENTATION OF EXISTING PROPERTY LINES, EXCLUDING RIGHT-OF-WAY LINES, AND SHOULD NOT BE USED AS A SUBSTITUTE FOR AN ACCURATE FIELD SURVEY.

I:\Clients\W1819 - WDOT District 5\130 Clinton Street Town of Campbell\dwg\clintonPP#1.dwg 01/20/2004 02:43:10 PM CST

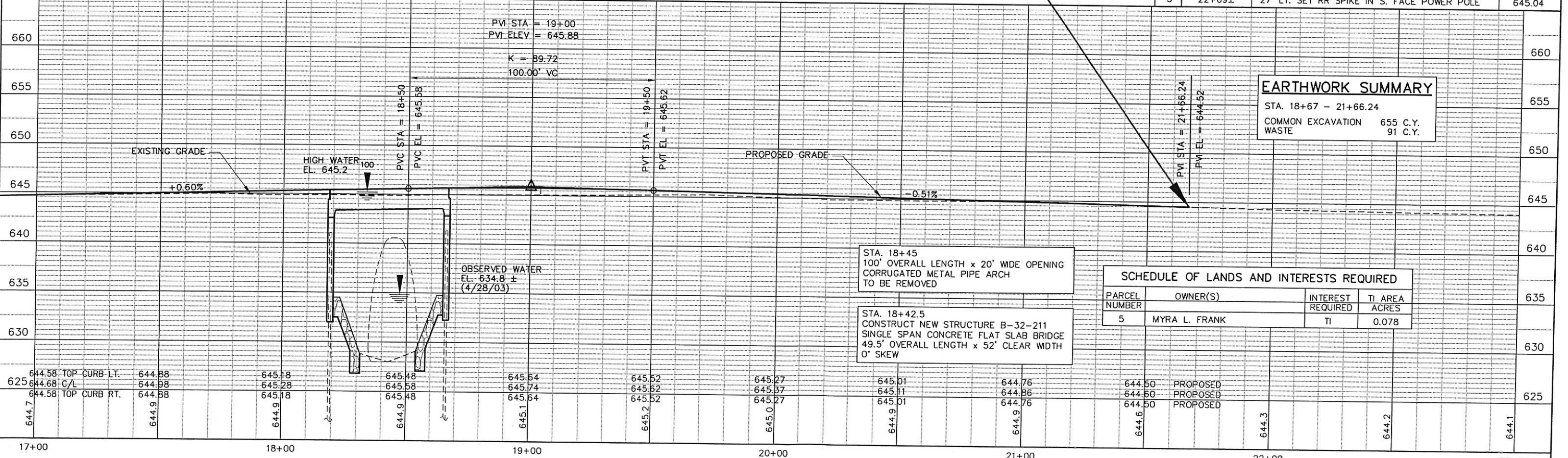


NET CENTERLINE LENGTH STA. 17+00 TO STA. 21+66.24 = 466.24 L.F.

END PROJECT 5991-09-33  
 STA. 21+66.24  
 Y = 205,502.92  
 X = 497,536.41

**ORIGIN OF LEVELS**  
 WEST BOLT ON OLD SIGN BASE PLATE  
 AT WEBER'S, INTERSECTION OF BAINBRIDGE AND CLINTON  
 EL. 645.14 (USGS DATUM NVGD 1929)

BENCHMARKS			
NO.	STA.	DESCRIPTION	ELEV.
1	14+68±	29' RT. SET RR SPIKE IN N. FACE POWER POLE	645.87
2	18+46±	40' RT. TOP OF S. BOLT ON PIPE ARCH	640.81
3	22+09±	27' LT. SET RR SPIKE IN S. FACE POWER POLE	645.04



**EARTHWORK SUMMARY**

STA. 18+67 - 21+66.24

COMMON EXCAVATION	655 C.Y.
WASTE	91 C.Y.

**SCHEDULE OF LANDS AND INTERESTS REQUIRED**

PARCEL NUMBER	OWNER(S)	INTEREST REQUIRED	TI AREA ACRES
5	MYRA L. FRANK	TI	0.078

I:\Clients\W1819 WDOT District 5\130 Clinton Street Town of Campbell\dwg\clintonPP#1.dwg 01/14/2004 05:02:05 PM CST

CLINTON STREET

EAST APPROACH

STA	DIST	CUT			FILL				CORRECTED		ALGEBRAIC SUM
		END AREA	VOLUME (CY)	TOTALS	END AREA	VOLUME (CY)	TOTALS	SHRG	FILL	DIFF	
12+60		65.0			0.0						
13+00	40.0	66.0	97.0	97.0	4.0	3.0	3.0	1.3	3.9	93.1	93.1
13+50	50.0	72.0	127.8	224.8	3.0	6.5	9.5	1.3	12.4	119.4	212.4
14+00	50.0	73.0	134.3	359.1	2.0	4.6	14.1	1.3	18.3	128.3	340.8
14+50	50.0	83.0	144.4	503.5	0.0	1.9	16.0	1.3	20.8	141.9	482.7
15+00	50.0	83.0	153.7	657.2	0.0	0.0	16.0	1.3	20.8	153.7	636.4
15+50	50.0	93.0	163.0	820.2	0.0	0.0	16.0	1.3	20.8	163.0	799.4
16+00	50.0	90.0	169.4	989.6	1.0	0.9	16.9	1.3	22.0	168.2	967.6
16+50	50.0	90.0	166.7	1156.3	2.0	2.8	19.7	1.3	25.6	163.1	1130.7
17+00	50.0	78.0	155.6	1311.9	56.0	53.7	73.4	1.3	95.4	85.8	1216.5
17+50	50.0	69.0	136.1	1448.0	99.0	143.5	216.9	1.3	282.0	-50.5	1166.0
18+00	50.0	52.0	112.0	1560.0	7.0	98.1	315.0	1.3	409.5	-15.5	1150.5
18+18	18.0	52.0	34.7	1594.7	7.0	4.7	319.7	1.3	415.6	28.6	1179.1

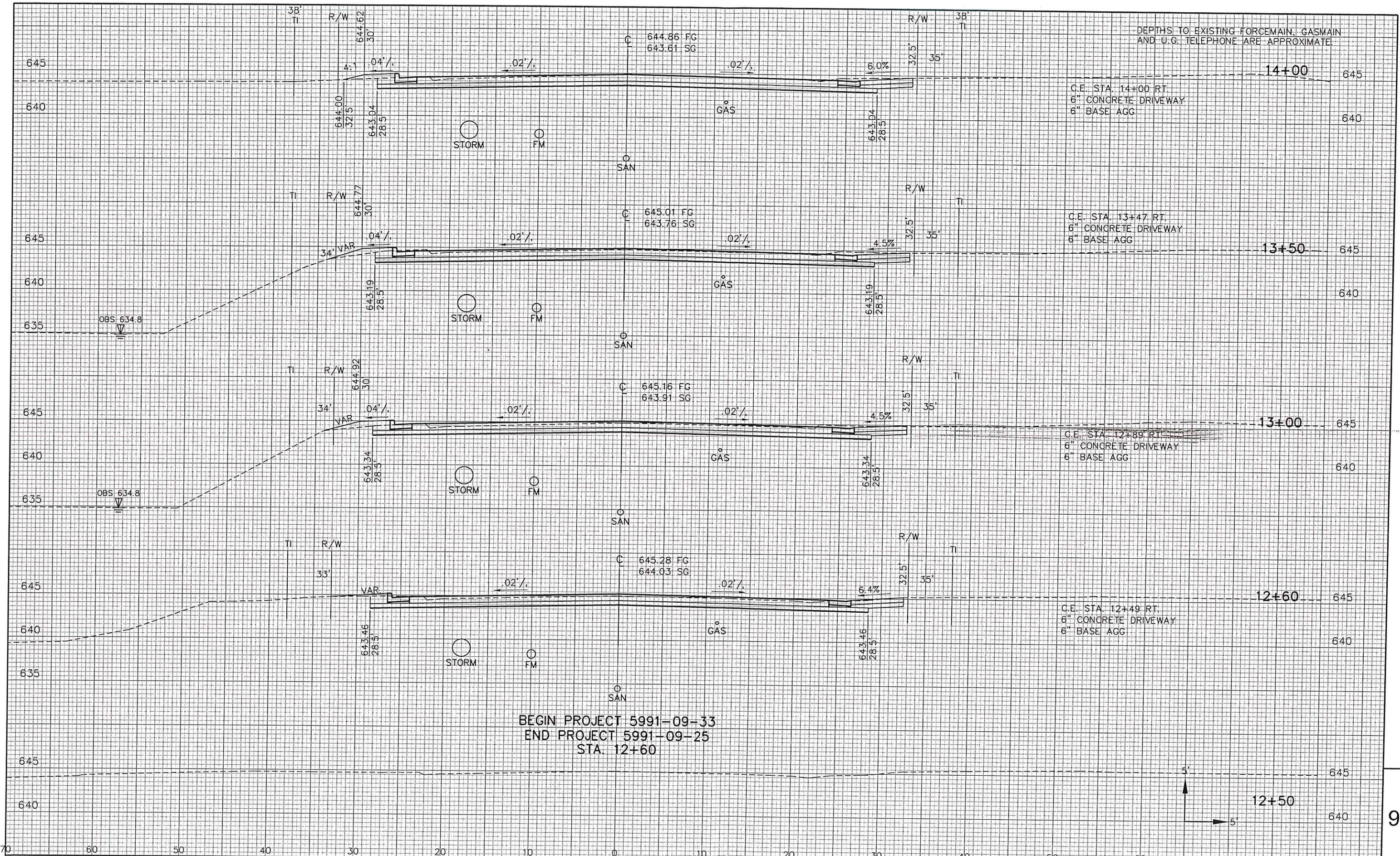
SUBTOTAL  
COMMON EXCAVATION  
WASTE  
CY  
1595  
1179

WEST APPROACH

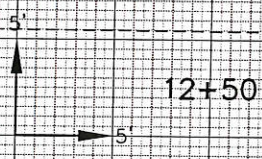
STA	DIST	CUT			FILL				CORRECTED		ALGEBRAIC SUM
		END AREA	VOLUME (cy)	TOTALS	END AREA	VOLUME (cy)	TOTALS	SHRG	FILL	DIFF	
18+67		36.0			96.0						
19+00	33.0	36.0	44.0	44.0	96.0	117.3	117.3	1.3	152.5	-108.5	-108.5
19+50	50.0	47.0	76.9	120.9	74.0	157.4	274.7	1.3	357.1	-127.7	-236.2
20+00	50.0	58.0	97.2	218.1	25.0	91.7	366.4	1.3	476.3	-22.0	-258.2
20+50	50.0	62.0	111.1	329.2	23.0	44.4	410.8	1.3	534.0	53.4	-204.8
21+00	50.0	81.0	132.4	461.6	1.0	22.2	433.0	1.3	562.9	103.5	-101.3
21+50	50.0	78.0	147.2	608.8	0.0	0.9	433.9	1.3	564.1	146.0	44.7
21+66	16.0	78.0	46.2	655.0	0.0	0.0	433.9	1.3	564.1	46.2	90.9

SUBTOTAL  
COMMON EXCAVATION  
WASTE  
CY  
655  
91

TOTAL  
COMMON EXCAVATION  
WASTE  
CY  
2250  
1270

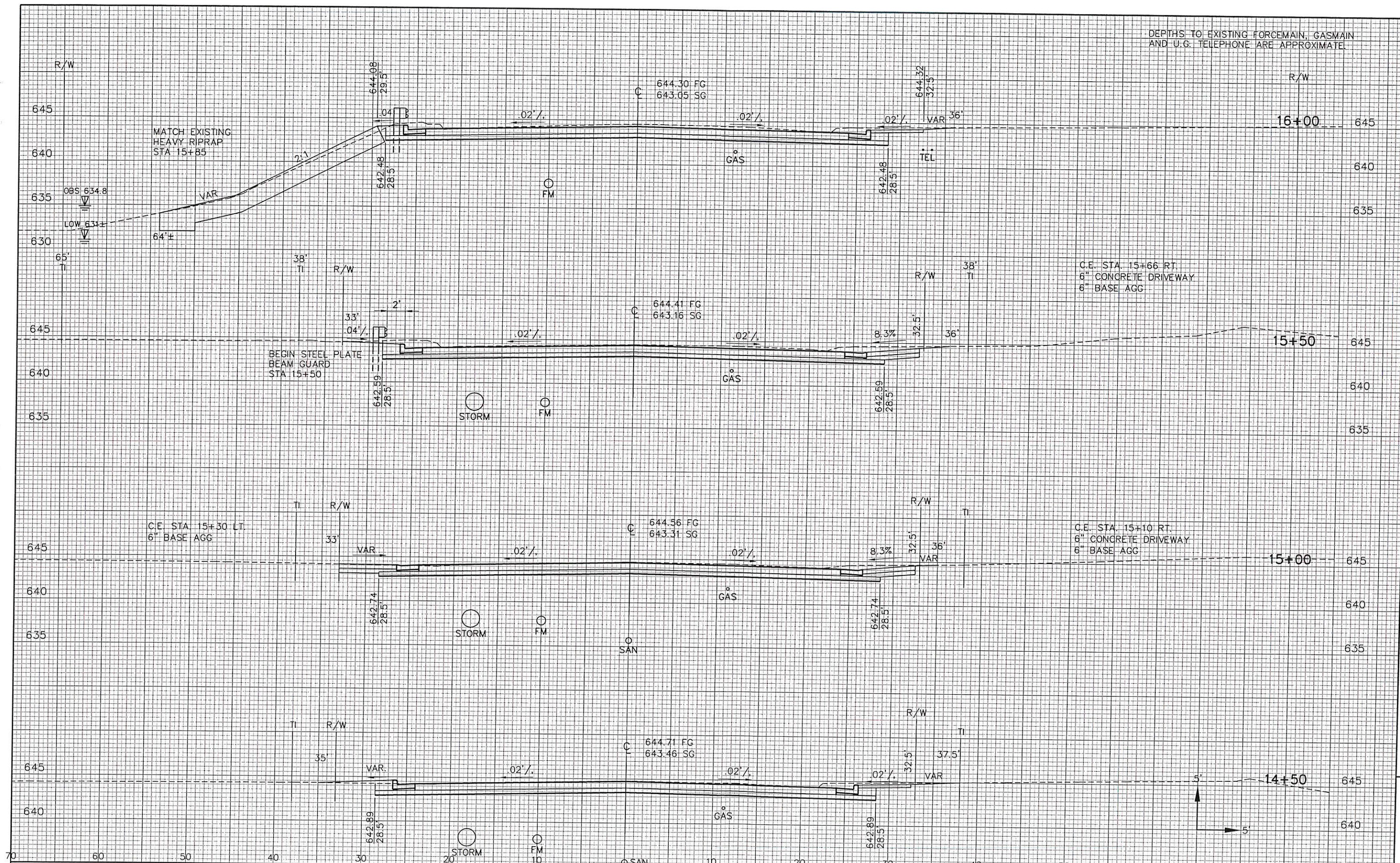


BEGIN PROJECT 5991-09-33  
 END PROJECT 5991-09-25  
 STA. 12+60



I:\Clients\W1819 WDOT District 5\130 Clinton Street Town of Campbell\dwg\clintonxs.dwg 01/14/2004 05:09:52 PM CST

DEPTHS TO EXISTING FORCEMAIN, GASMAIN AND U.G. TELEPHONE ARE APPROXIMATE



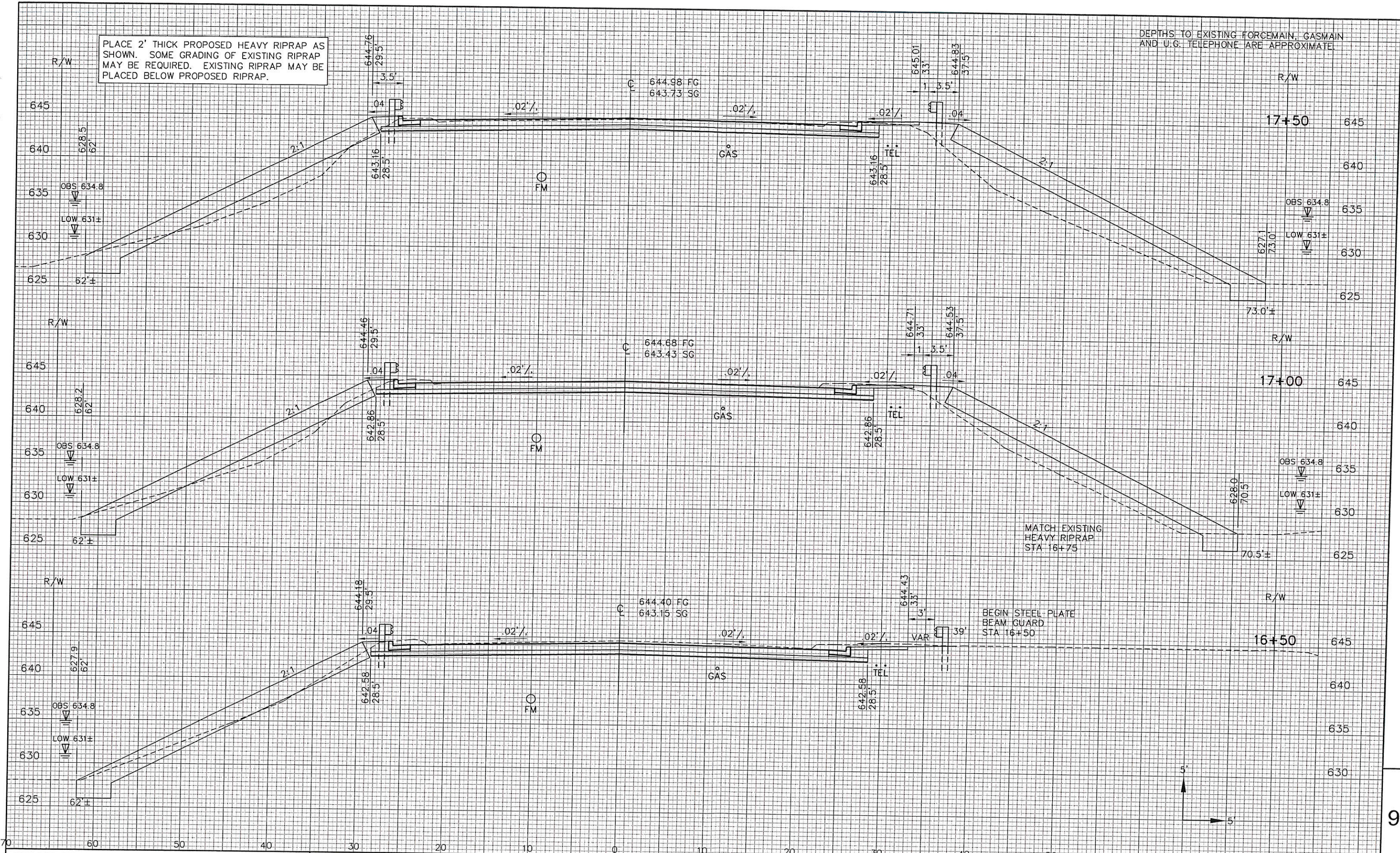
STATE PROJECT NO: 5991-09-33	HWY: CLINTON STREET (CTH B)	COUNTY: LA CROSSE	CROSS SECTIONS	SHEET NO:	E
------------------------------	-----------------------------	-------------------	----------------	-----------	---

I:\Clients\W1819 WDOT District 5\130 Clinton Street Town of Campbell\dwg\clintonxs.dwg 01/14/2004 05:09:52 PM CST

9

DEPTHS TO EXISTING FORCEMAIN, GASMAIN AND U.G. TELEPHONE ARE APPROXIMATE

PLACE 2' THICK PROPOSED HEAVY RIPRAP AS SHOWN. SOME GRADING OF EXISTING RIPRAP MAY BE REQUIRED. EXISTING RIPRAP MAY BE PLACED BELOW PROPOSED RIPRAP.

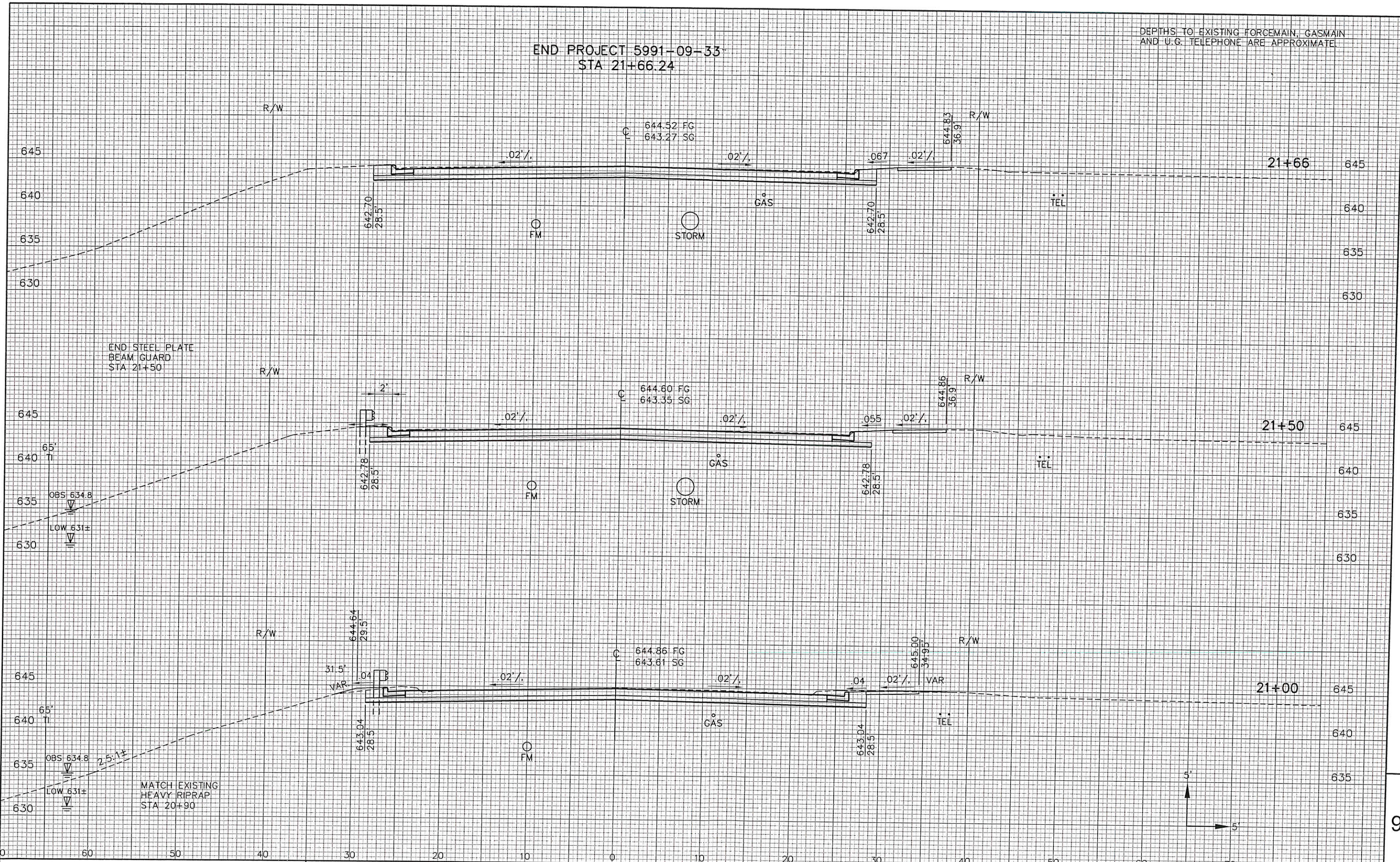


I:\Clients\W1819 WDOT District 5\130 Clinton Street Town of Campbell\dwg\clintonxs.dwg 01/14/2004 05:09:52 PM CST



END PROJECT 5991-09-33  
STA 21+66.24

DEPTHS TO EXISTING FORCEMAIN, GASMAIN  
AND U.G. TELEPHONE ARE APPROXIMATE



END STEEL PLATE  
BEAM GUARD  
STA 21+50

MATCH EXISTING  
HEAVY RIPRAP  
STA 20+90

I:\Clients\W1819 WDOT District 5\130 Clinton Street Town of Campbell\dwg\clintonxs.dwg 01/14/2004 05:09:52 PM CST