

LA CROSSE COUNTY HIGHWAY DEPARTMENT
LA CROSSE, WIS.
Paul A. Hartwig, Highway Commissioner

ROAD	LARSON	TOWN	Bangor-Book # 21
SURVEY BY	F.N.D.	DATE	May 15, 45
DRAWN BY	D.C.	DATE	May 25 45
CHECKED BY	P.A.H.	DATE	May 26 45
APPROVED BY	Town Board	DATE	May 26 45

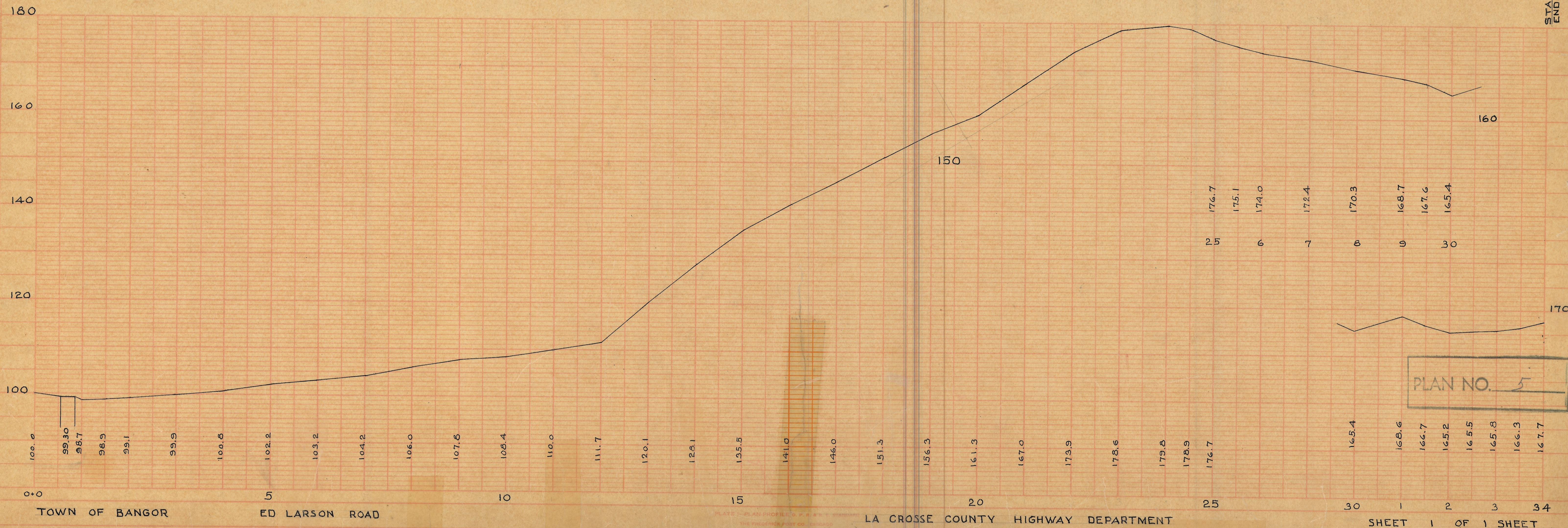
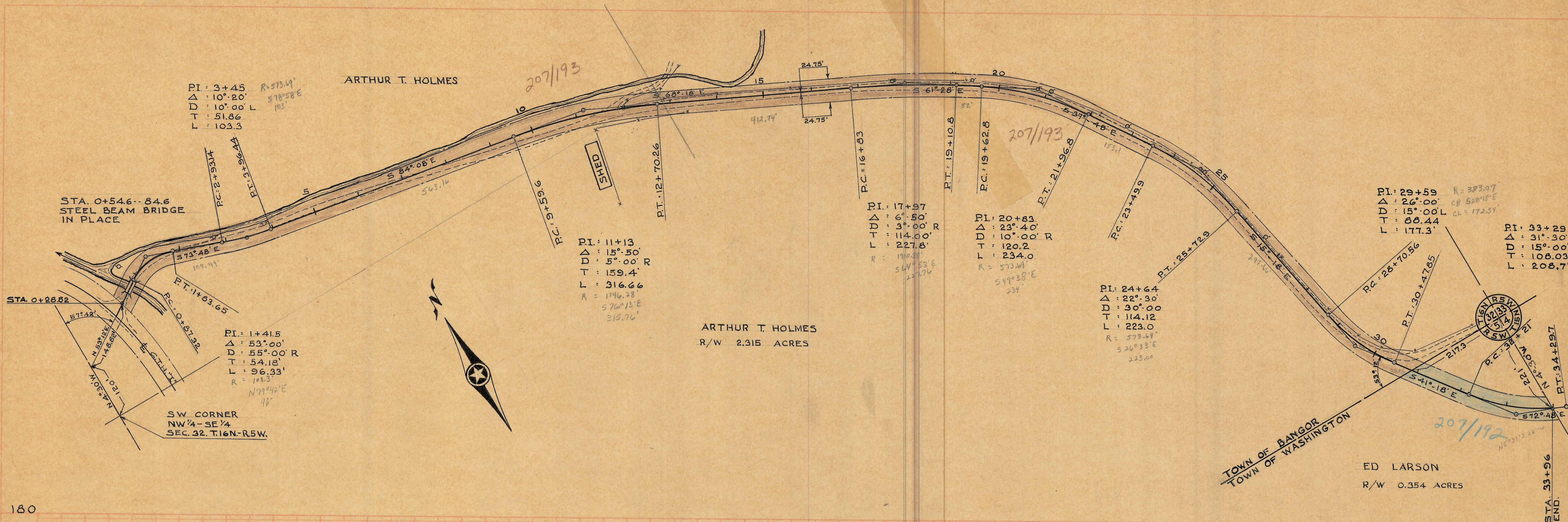
N 5° 31' 3.22" W

END. 5:15.45 D.C. 8:31.45

21

END. 5:17.45 D.C. 8:31.45

21



PLAN NO. 5

LA CROSSE COUNTY HIGHWAY DEPARTMENT

SHEET 1 OF 1 SHEET