

NOV. 49
JAN. 50
F.N.D.
D.C.
PLAN
NOTE BOOK
No. 24

NOV. 49
JAN. 50
F.N.D.
D.C.
PROFILE
NOTE BOOK
No. 23

P.I. 0+00
Δ 11°-30'
D 5°-00' L
T 115.4
L 230.00
E 5.79

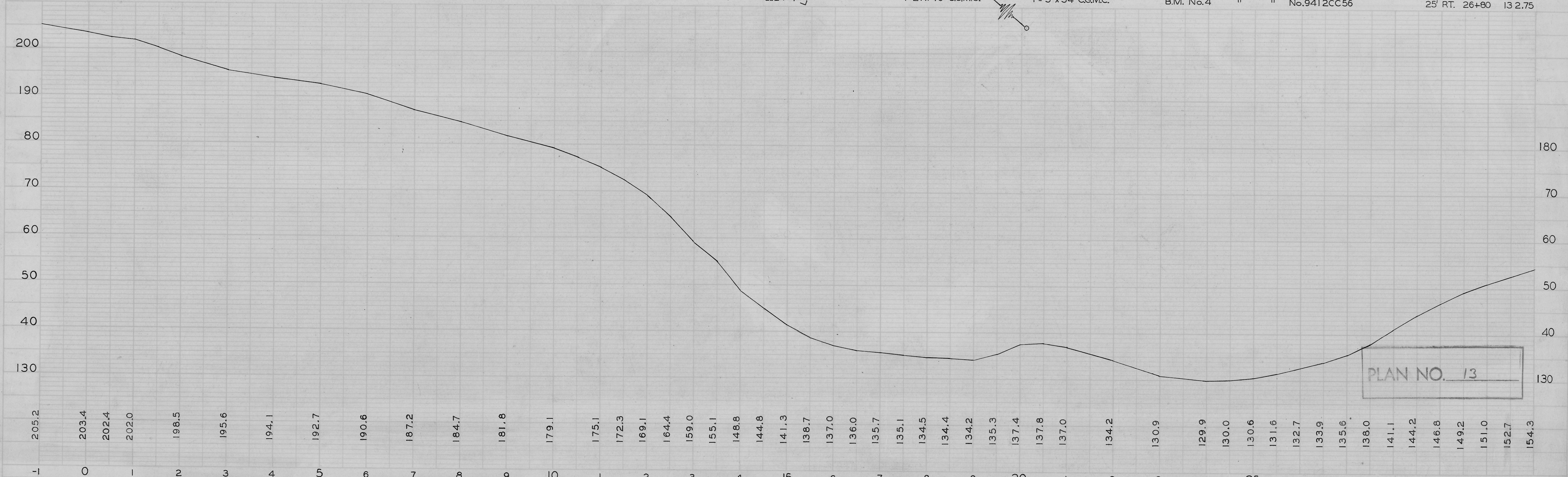
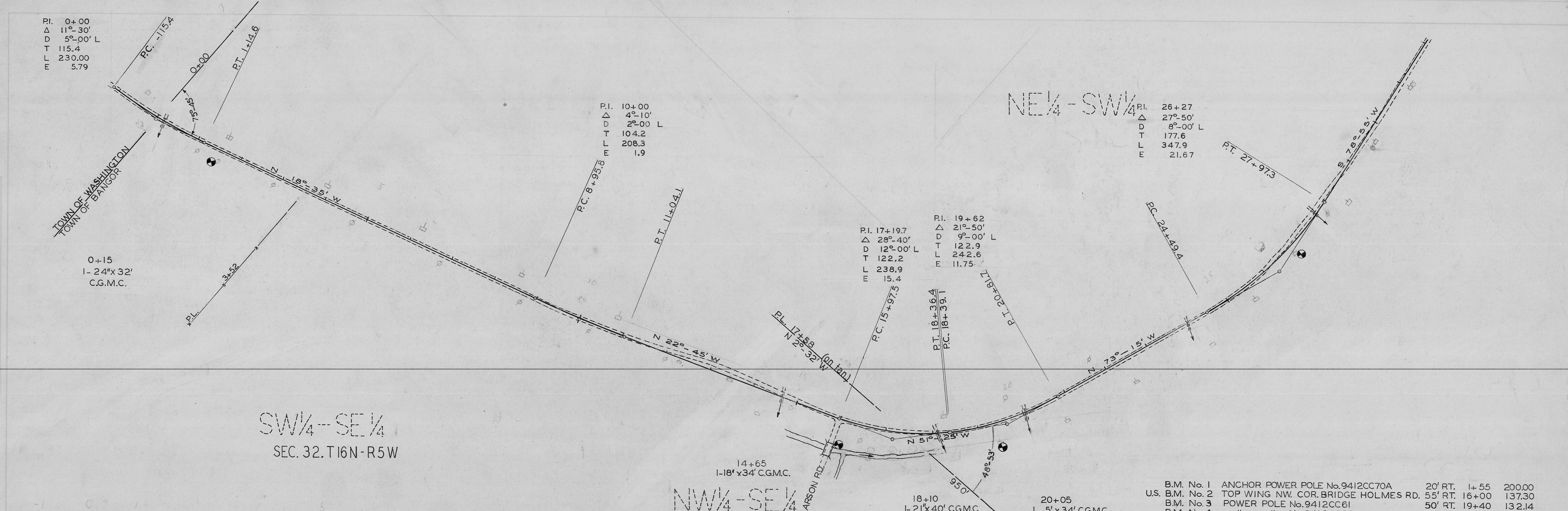
P.I. 10+00
Δ 4°-10'
D 2°-00' L
T 104.2
L 208.3
E 1.9

P.I. 17+19.7
Δ 28°-40'
D 12°-00' L
T 122.2
L 238.9
E 15.4

P.I. 19+62
Δ 21°-50'
D 9°-00' L
T 122.9
L 242.6
E 11.75

P.I. 26+27
Δ 27°-50'
D 8°-00' L
T 177.6
L 347.9
E 21.67

B.M. No. 1	ANCHOR POWER POLE No.9412CC70A	20' RT.	1+55	200.00
U.S. B.M. No. 2	TOP WING NW. COR. BRIDGE HOLMES RD.	55' RT.	16+00	137.30
B.M. No. 3	POWER POLE No.9412CC61	50' RT.	19+40	132.14
B.M. No. 4	" " No.9412CC56	25' RT.	26+80	132.75



PLAN NO. 13

