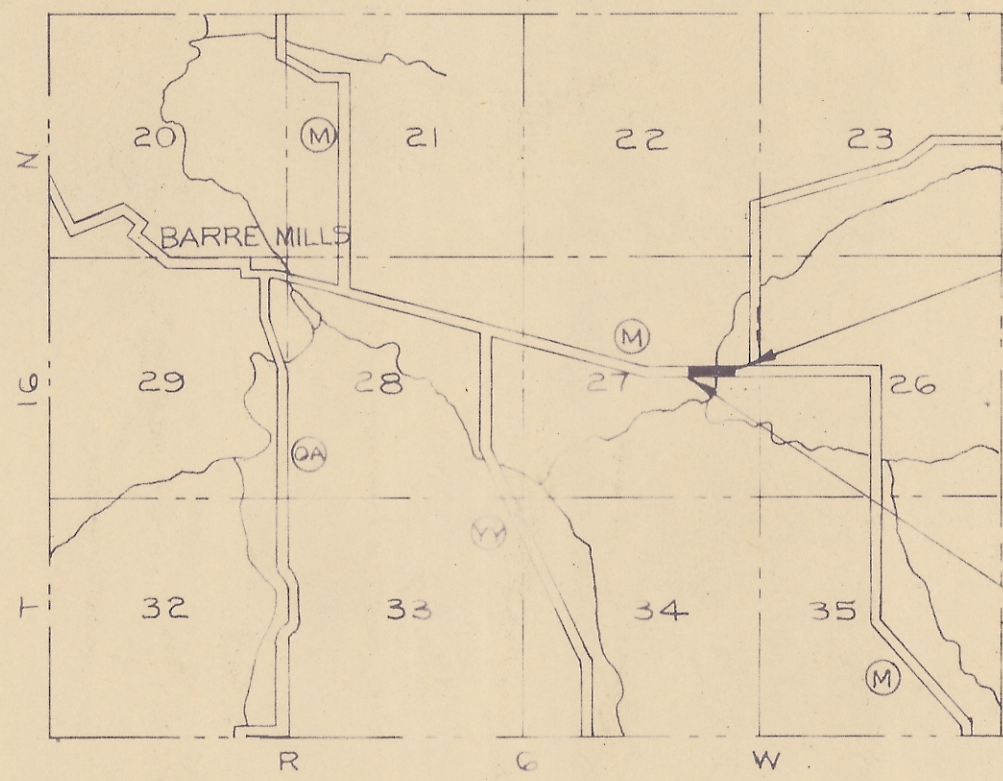
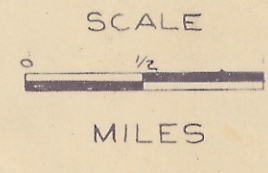


P.R.A. DISTRICT OFFICE	PROJECT	SHEET NUMBER	TOTAL SHEETS
WIS. 5N	50123(3)		



LOCATION SKETCH



T O W N O F

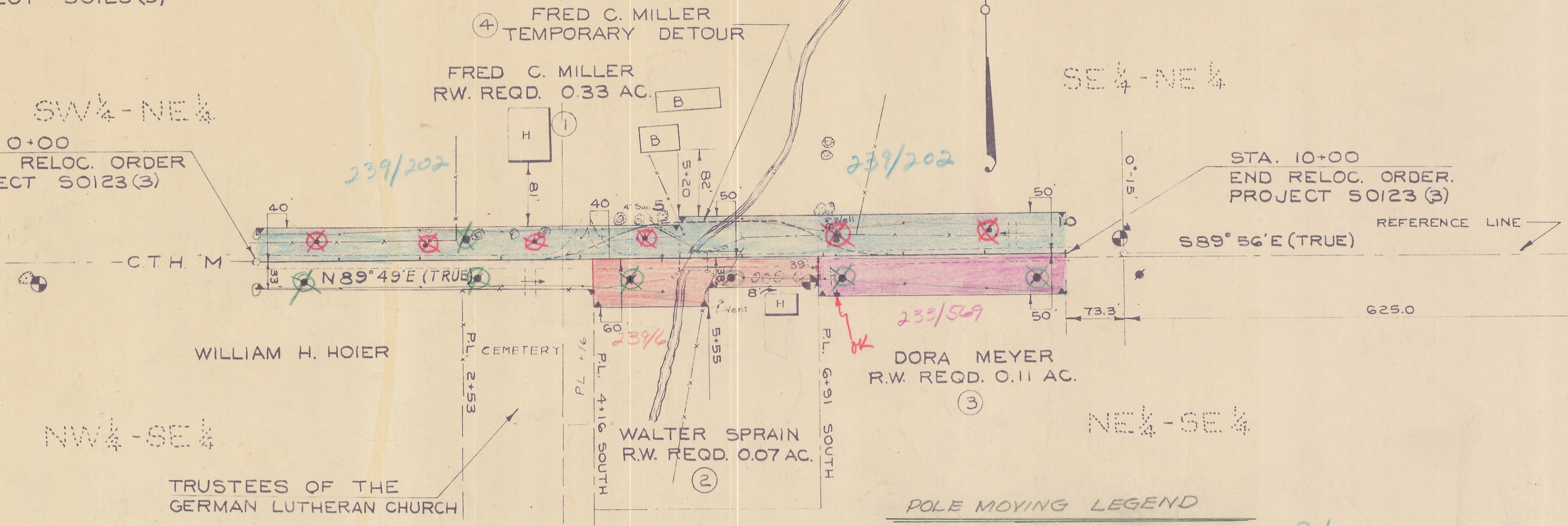
S.T.H. 33-BARRE MILLS ROAD(MILLER BRIDGE)
C.T.H. "M"
LA CROSSE COUNTY

STA. 10+00
END RELOC. ORDER
PROJECT 50123(3)

STA. 0+00
BEGIN. RELOC. ORDER
PROJECT 50123(3)

STA. 10+00
END RELOC. ORDER.
PROJECT 50123(3)

EAST 1/4 COR. SEC. 27
T1GN, R&W



POLE MOVING LEGEND
 - LaCrosse Tel. Corp. - 7 Poles
 - N.S.P.Co. - 6 Poles

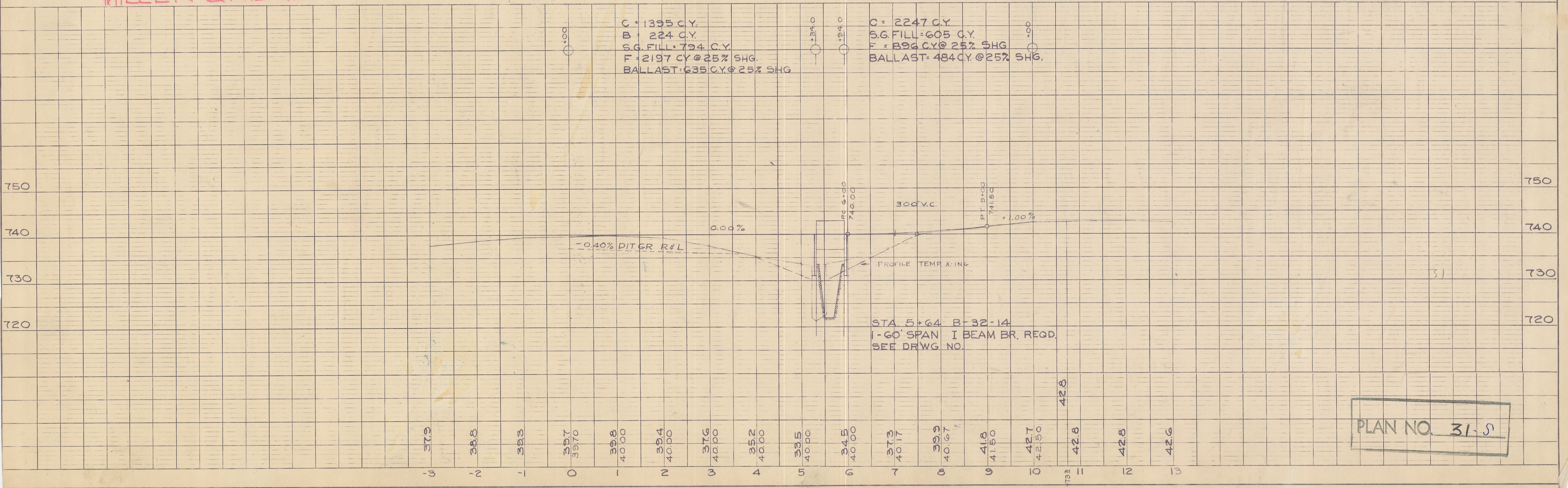
BENCH MARKS

BM#1	SPIKE IN 36" MAPLE	-3+00 15' RT.	738.62
BM#2	SPIKE IN 24" MAPLE	6+68 22' RT.	736.66
BM#3	SPIKE IN P.P.	10+76 25' LT.	745.03

MILLER BRIDGE

B A R R E

C = 1395 C.Y.	C = 2247 C.Y.
B = 224 C.Y.	S.G. FILL = 605 C.Y.
S.G. FILL = 794 C.Y.	F = 894 C.Y. @ 25% SHG.
F = 2197 C.Y. @ 25% SHG.	BALLAST = 484 C.Y. @ 25% SHG.
BALLAST = 635 C.Y. @ 25% SHG.	



PLAN NO. 31-5

LA CROSSE CO. HIGHWAY DEPT.

TOWN OF BARRE

C.T.H. "M"

T 16 N, R 6 W, SEC. 26.

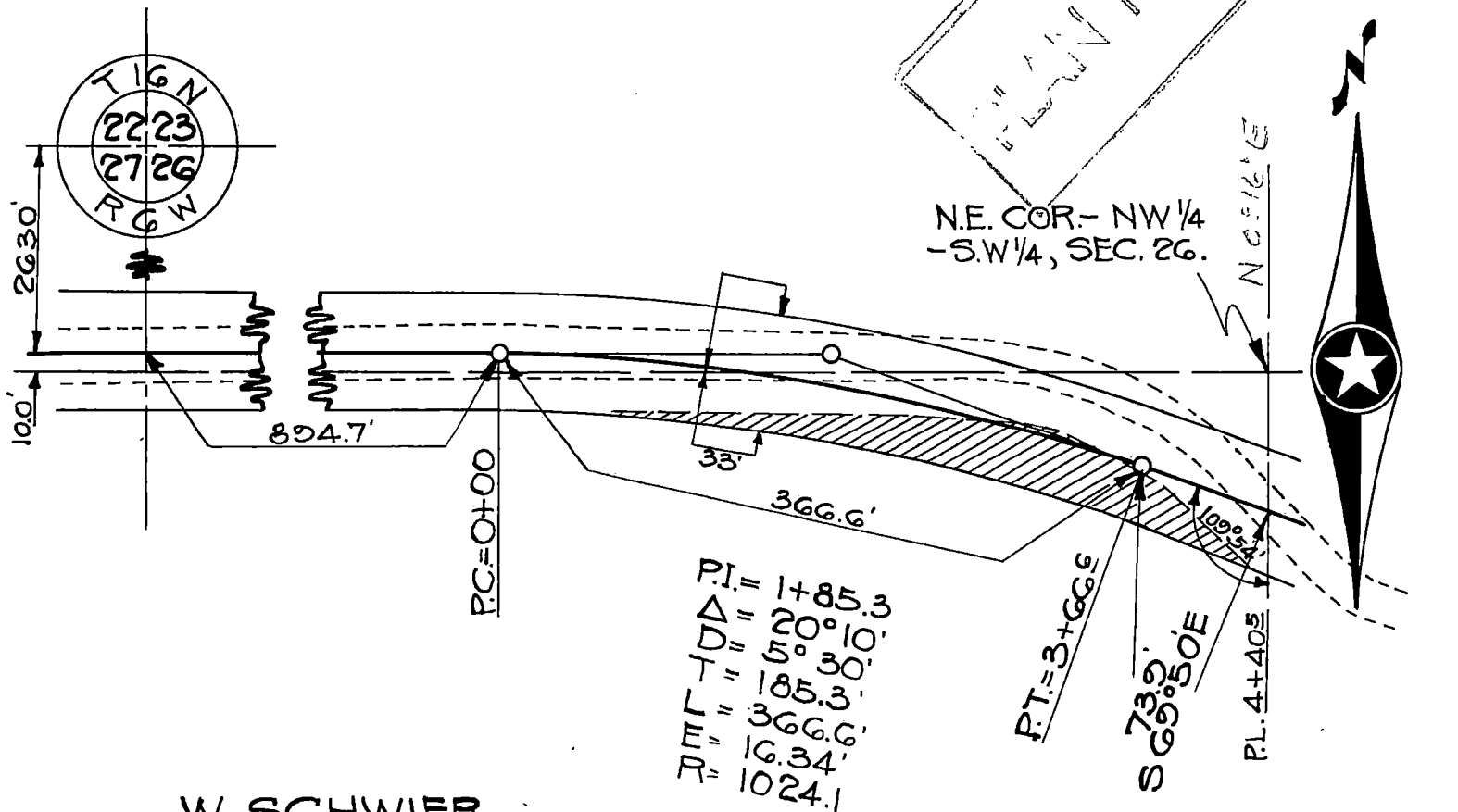
SURVEYED - MAY 1940

" BY- H.H.B.

DRAWN - JULY 1940

" BY- L.J.M.

SCALE: 1"=100' - NOTEBOOK NO.36



W. SCHWIER
R/W REQD. = 0.19 AC.

NOTE: - THE CROSS HATCHED AREA
SHOWS PORTION TRANSACTED FOR

LACROSSE CO. HIGHWAY DEPT.
 TOWN OF BARRE
 C.T.H. "M"
 T 16 N, R 6 W, SEC. 26.
 SURVEYED: MAY 1940
 BY H.H.B.
 DRAWN BY L.J.M.
 SCALE: 1"=100' — NOTEBOOK NO. 36.

LOUIS SCHWIER
 R/W REQD. = 0.12 AC.

NOTE: THE CROSS HATCHED AREA
 SHOWS PORTION TRANSACTED FOR

PLAN NO.

