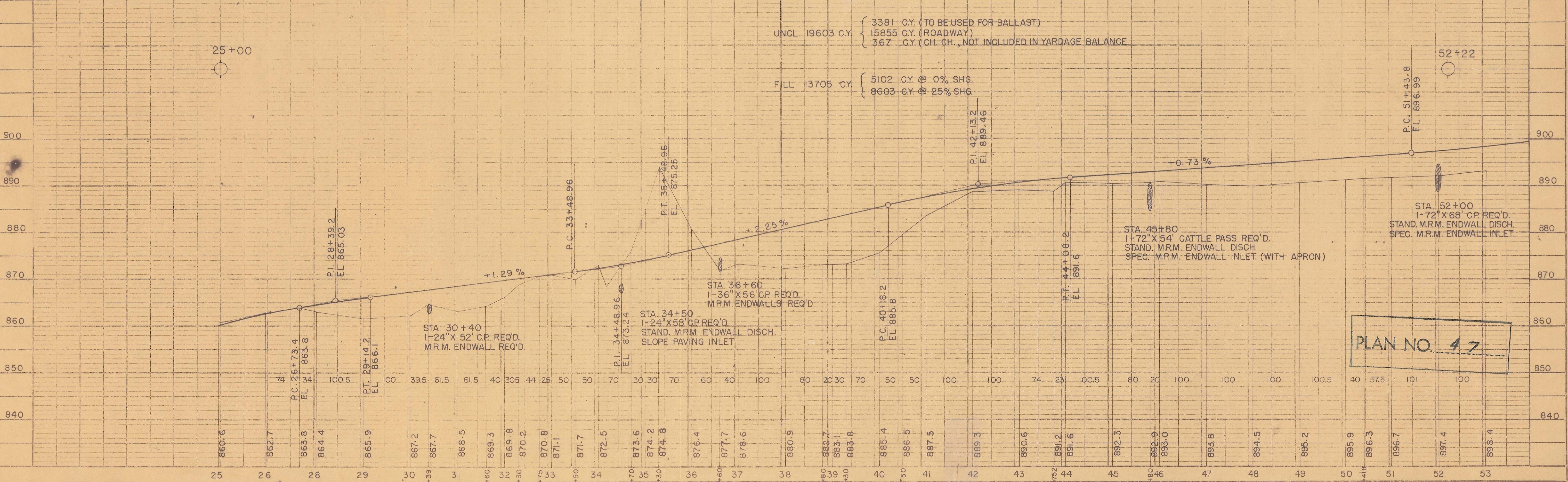
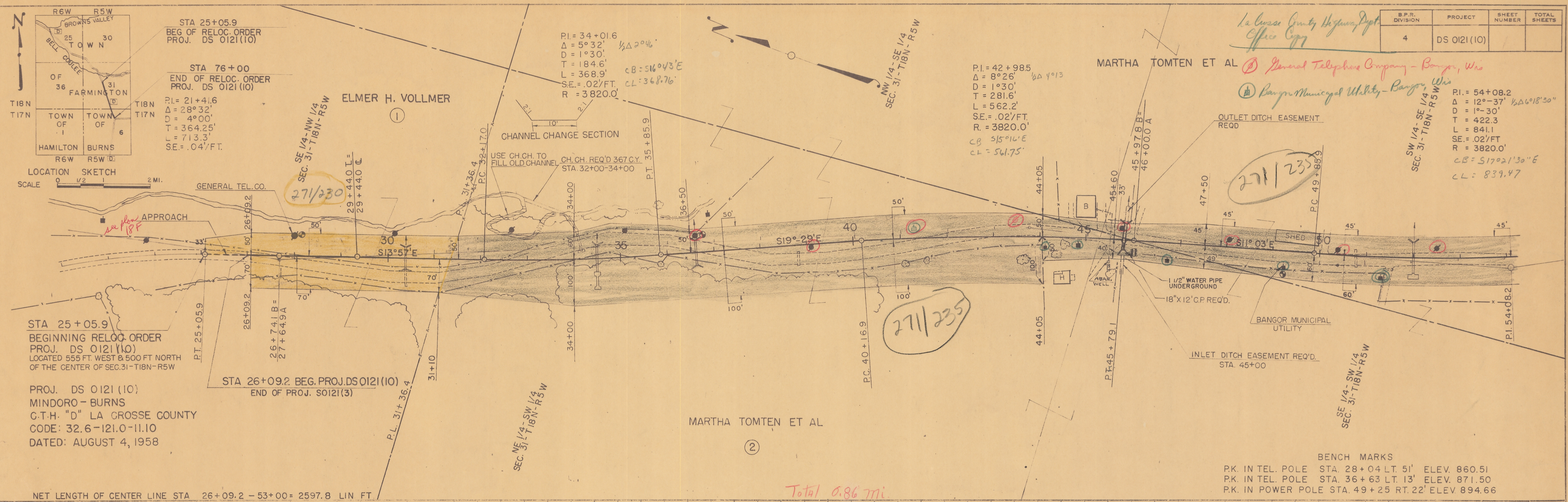


La Crosse County Highway Dept.
Office Copy

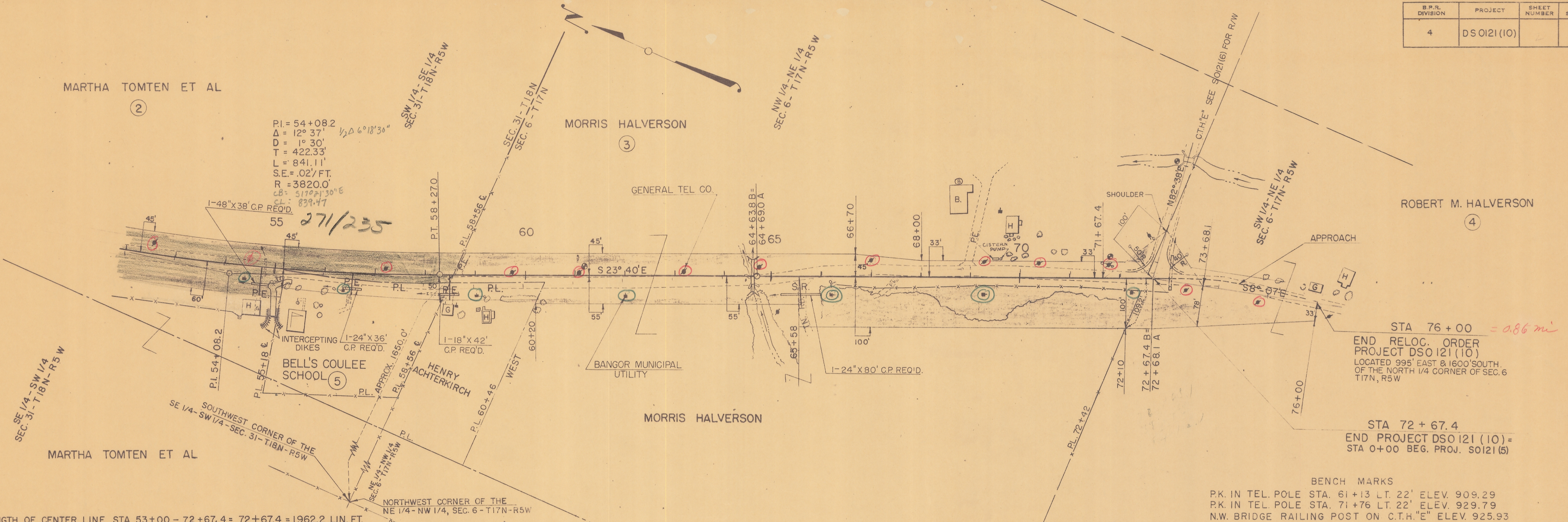
B.P.R. DIVISION	PROJECT	SHEET NUMBER	TOTAL SHEETS
4	DS 0121 (10)		



B.P.R. DIVISION	PROJECT	SHEET NUMBER	TOTAL SHEETS
4	DS 0121 (10)		

DATE	6/25/58
BY	B.C.B.
CHECKED	BRB/EIE
APPROVED	
NO.	1-1

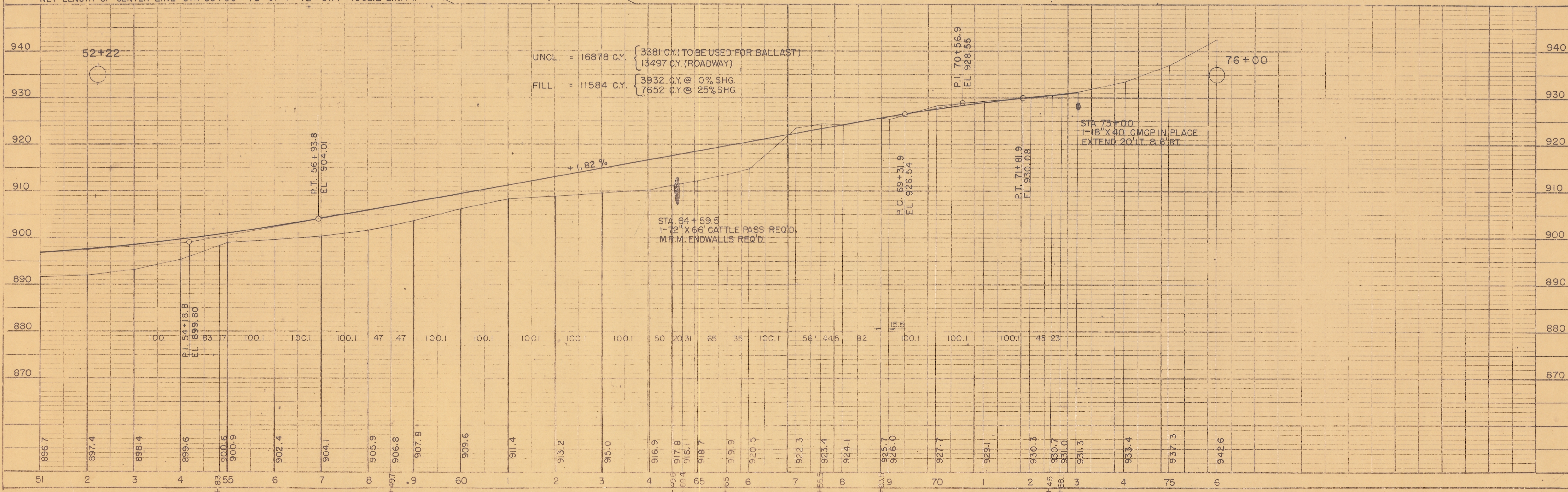
DATE	6/25/58
BY	J.P. WICK
CHECKED	J. B. BECK
APPROVED	
NO.	1-1



STA 76+00 = 0.86 mi
 END RELOC. ORDER
 PROJECT DS 0121 (10)
 LOCATED 995' EAST & 1600' SOUTH
 OF THE NORTH 1/4 CORNER OF SEC. 6
 T17N, R5W

STA 72+67.4
 END PROJECT DS 0121 (10) =
 STA 0+00 BEG. PROJ. S0121 (5)

BENCH MARKS
 P.K. IN TEL. POLE STA. 61+13 LT. 22' ELEV. 909.29
 P.K. IN TEL. POLE STA. 71+76 LT. 22' ELEV. 929.79
 N.W. BRIDGE RAILING POST ON C.T.H. "E" ELEV. 925.93



UNCL. = 16878 C.Y. { 3381 C.Y. (TO BE USED FOR BALLAST)
 13497 C.Y. (ROADWAY)
 FILL = 11584 C.Y. { 3932 C.Y. @ 0% SHG.
 7652 C.Y. @ 25% SHG.

STA 64+59.5
 1-72" X 66" CATTLE PASS REQ'D.
 M.F.M. ENDWALLS REQ'D.

STA 73+00
 1-18" X 40" CMCP IN PLACE
 EXTEND 20' LT. & 6' RT.