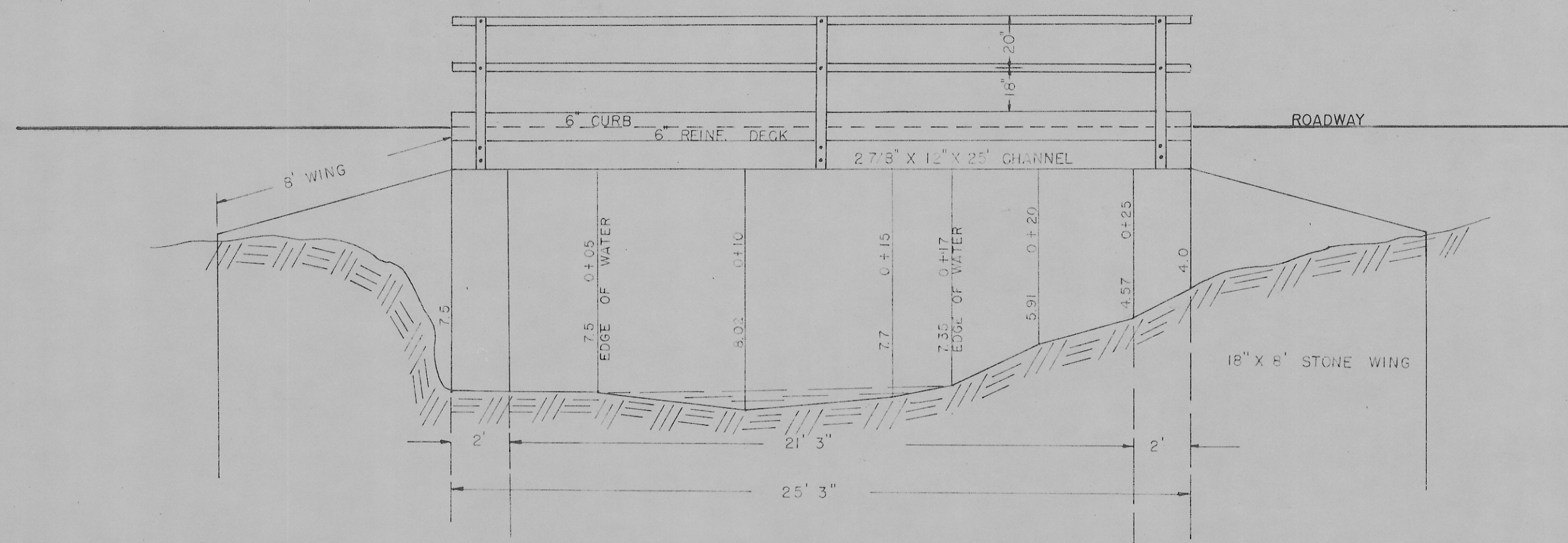
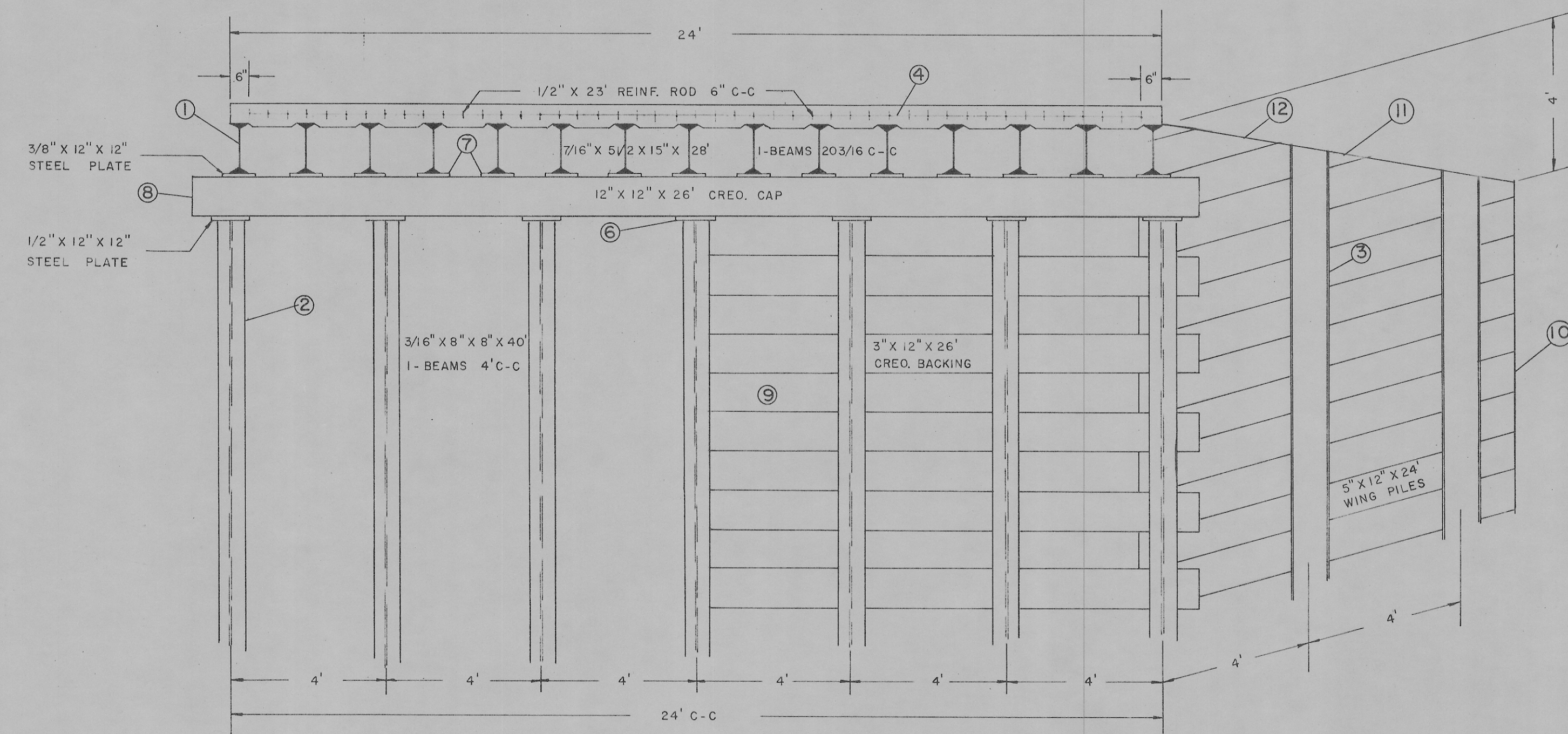


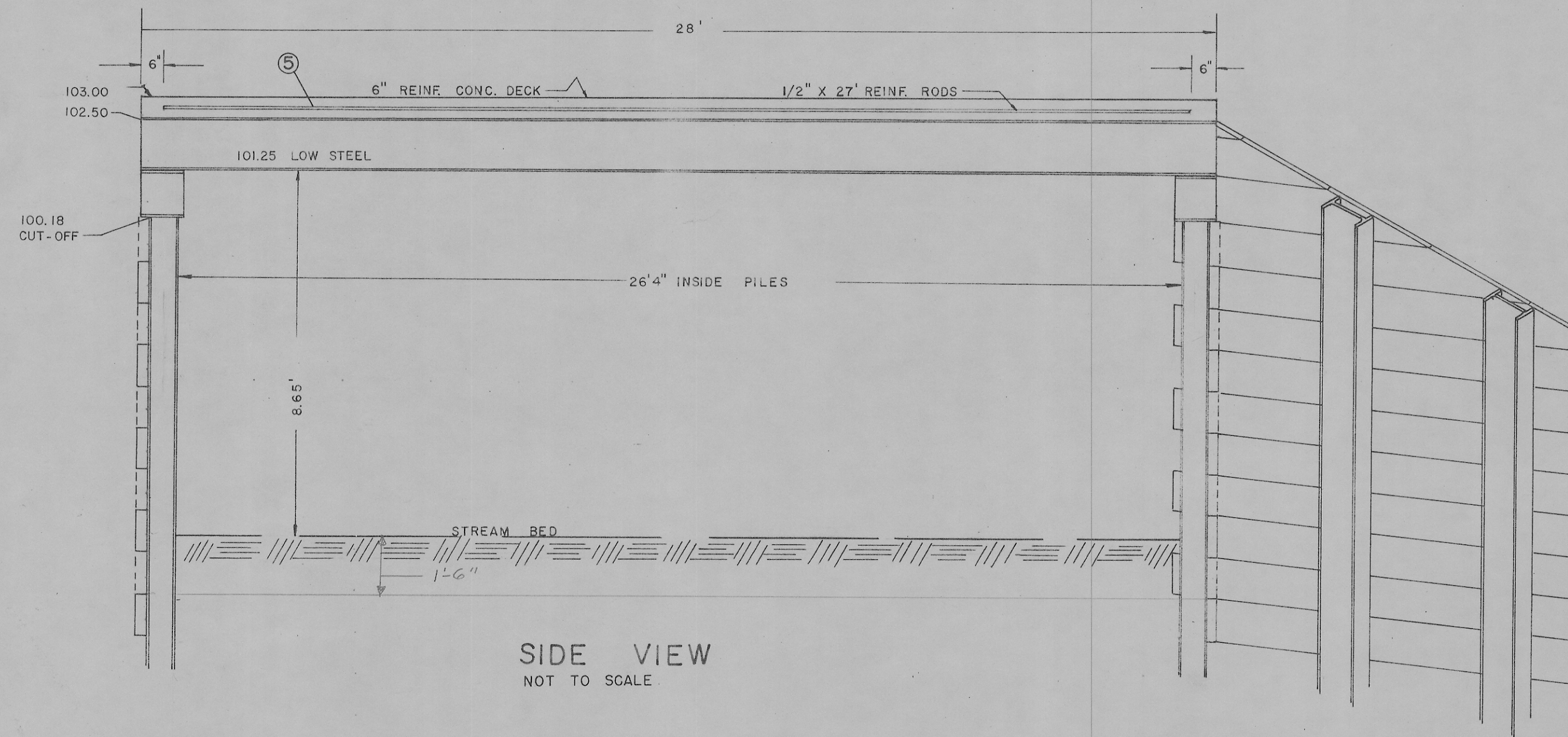
PLAN VIEW
SCALE 3/8" = 1'



ORIGINAL STRUCTURE
DECK 25' 3" X 16'
SCALE 1/4" = 1'



END VIEW
SCALE 3/8" = 1'



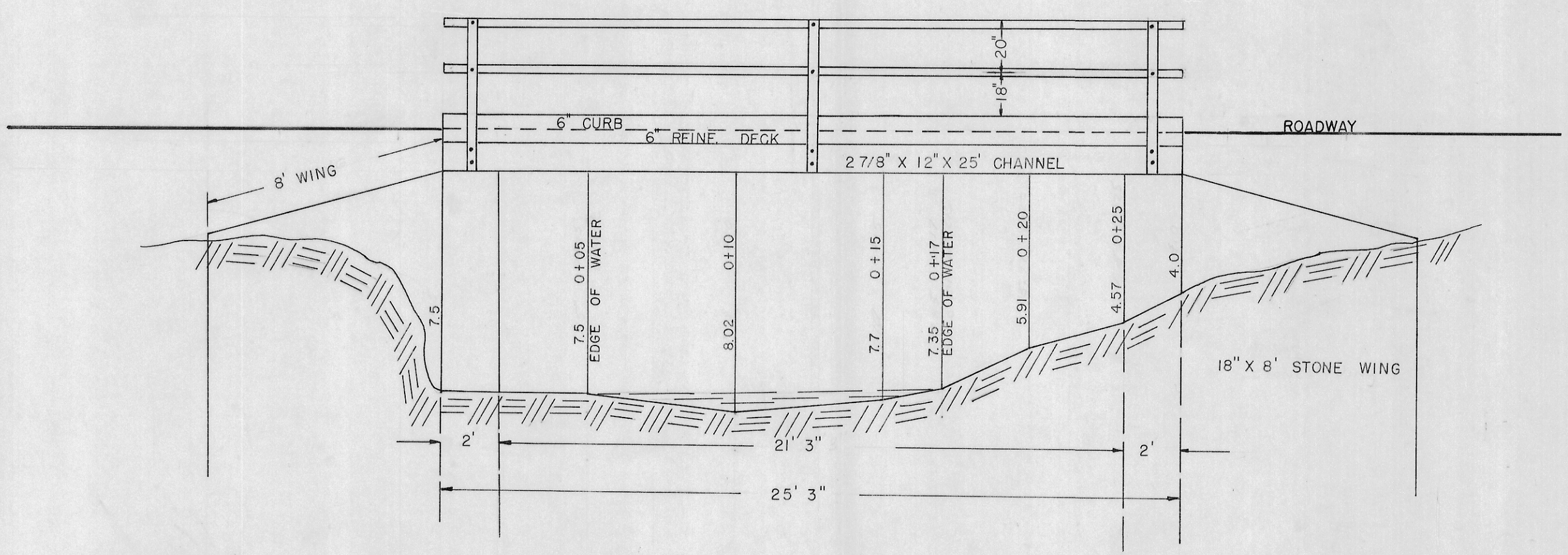
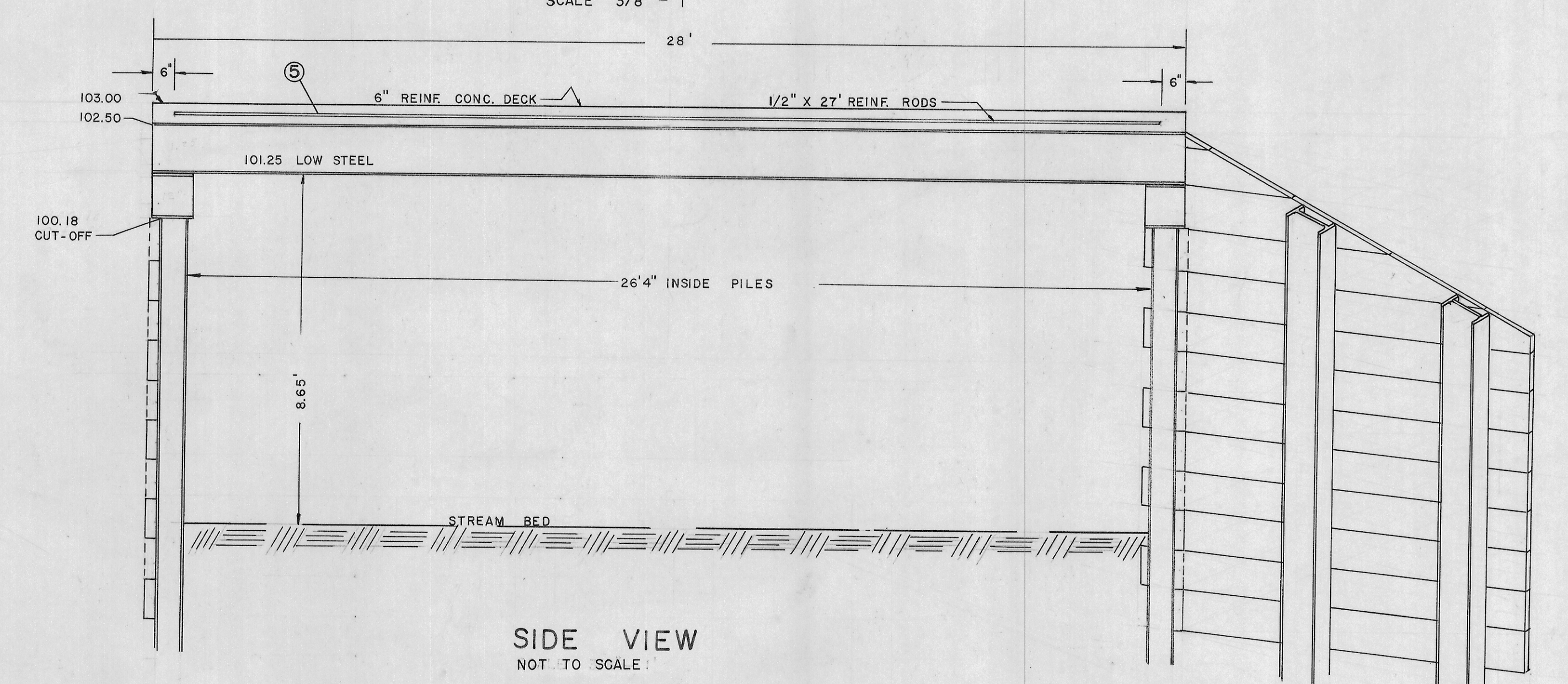
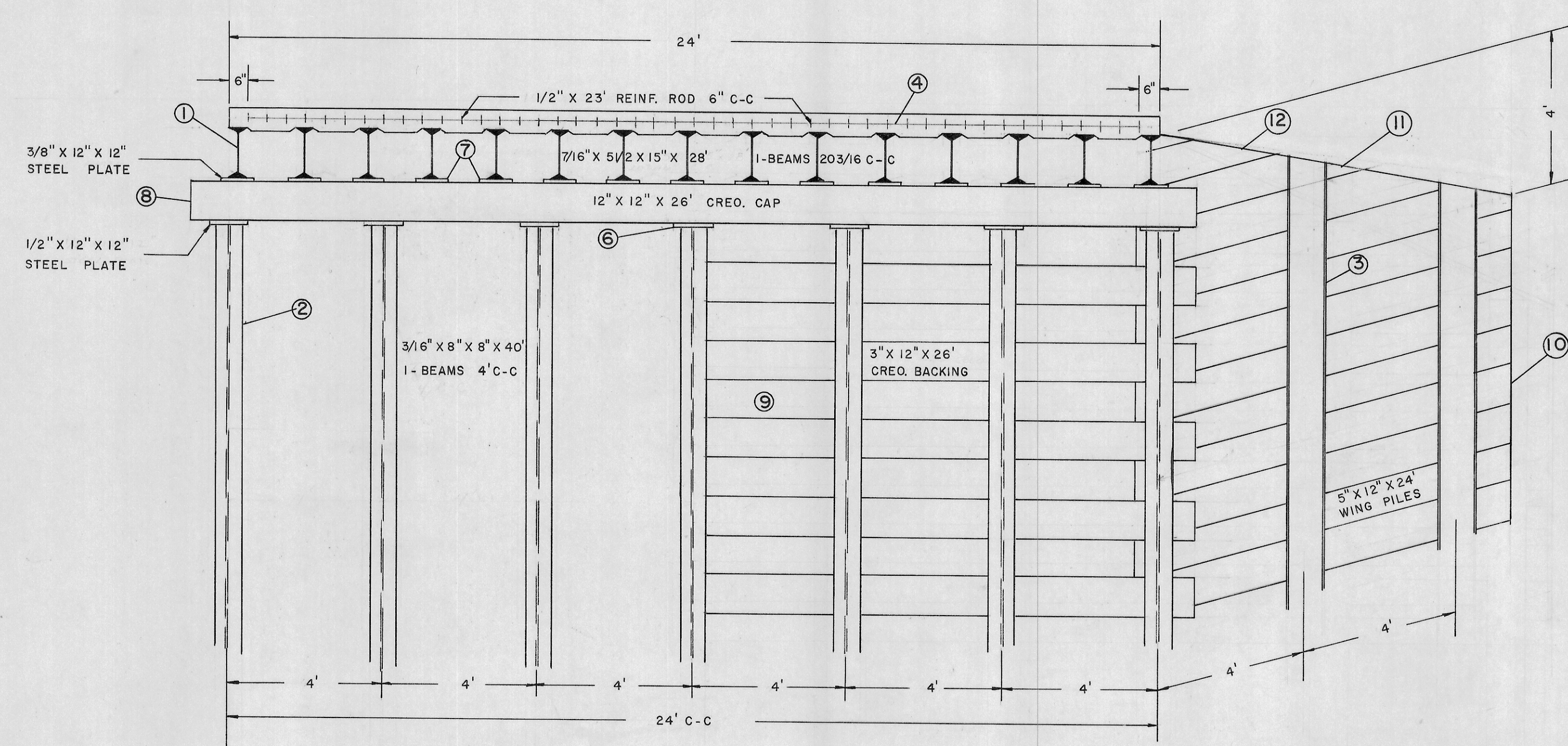
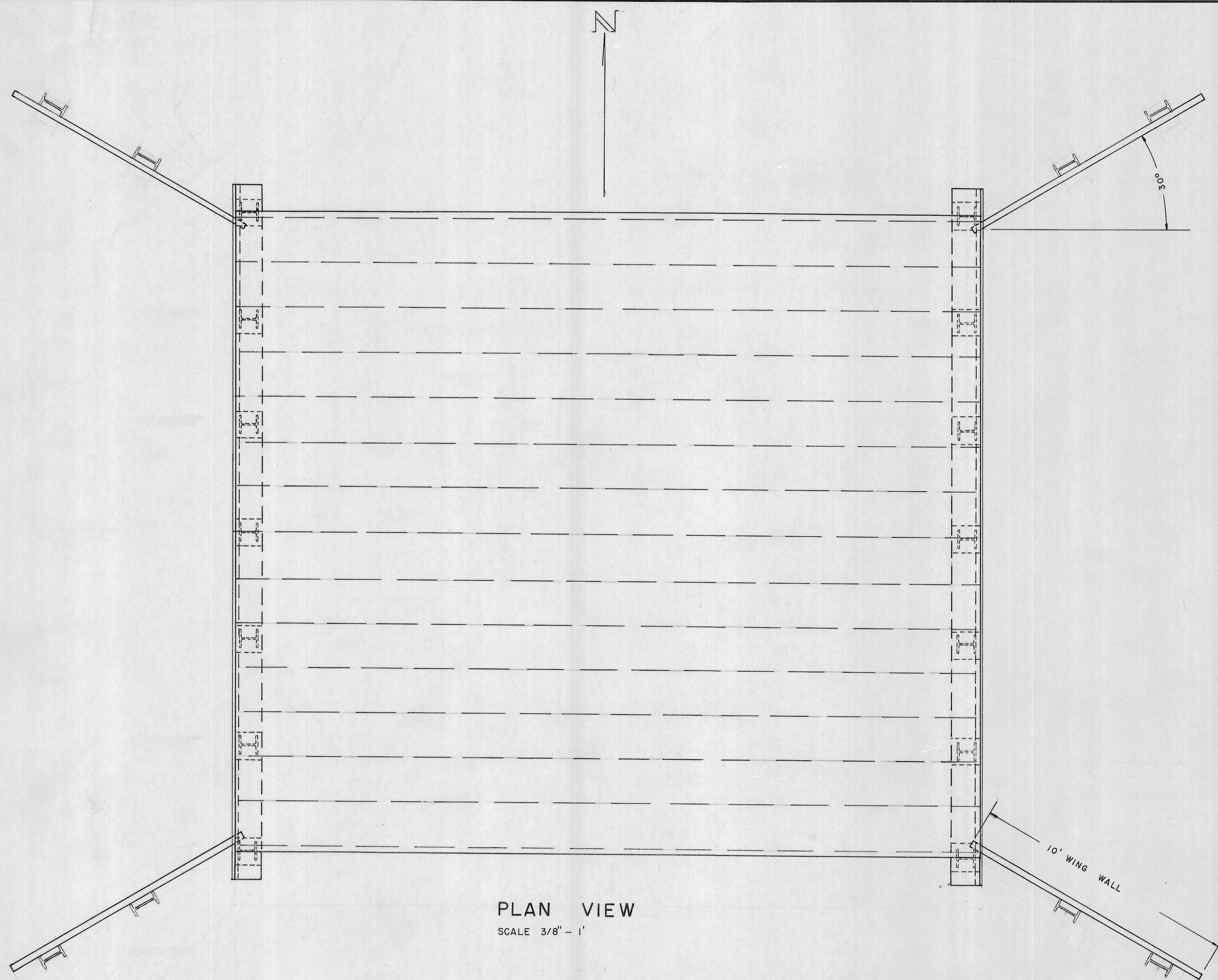
SIDE VIEW
NOT TO SCALE

BILL OF MATERIAL

NO.	MATERIAL	QTY.	SIZE	DESCRIPTION	SPACING
1	I - BEAMS	15	7/16" X 5 1/2" X 15" X 28'	STRINGERS	42.5 ⁸ / FT. 20 3/16" C-C
2	H - BEAMS	14	7/16" X 8" X 8" X 40'	PILING	36 ⁸ / FT. 4' C-C
3	I - BEAMS	8	3/8" X 5" X 12" X 24'	WING PILES	31.8 ⁸ / FT. 4' C-C
4	REINF. ROD	55	1/2" X 23'	TRANSVERSE	.66 ⁸ / FT. 6" C-C
5	"	47	1/2" X 27'	LONGIT.	" "
6	STEEL PLATE	14	1/2" X 12" X 12'	PILING COVERS	
7	"	30	3/8" X 12" X 12"	CAP PLATES	
8	CREO. TIMBER	2	12" X 12" X 26'	PILING CAP	624 FBM
9	PLANKING	24	3" X 12" X 26'	ABUT. BACKING	1872 "
10	"	40	3" X 12" X 10'	WING BACKING	1200 "
11	"	4	3" X 12" X 6'	"	72 "
12	"	4	3" X 12" X 4'	"	48 "
13	CONCRETE	12.5 CY.	6" REINF. DECK	6 BAG MIX	
14	GUARD RAIL	6 SECTIONS		S.H. FLEX BEAM	

ESTIMATED QUANTITIES

STRUCTURAL STEEL	44,284
REINF. ROD	1,107
EXCAVATION	100 CY.



BILL OF MATERIAL

NO.	MATERIAL	QTY.	SIZE	DESCRIPTION	SPACING
1.	I - BEAMS	15	7/16" X 5 1/2" X 15' X 28'	STRINGERS	42.9' / FT.
2.	H - BEAMS	14	7/16" X 8" X 40'	PILING	36" / FT.
3.	I - BEAMS	8	3/8" X 5" X 12' X 24'	WING PILES	31.8" / FT.
4.	REINF. ROD	55	1/2" X 23'	TRANSVERSE	.66" / FT.
5.	"	47	1/2" X 27'	LONGIT.	" "
6.	STEEL PLATE	14	1/2" X 12' X 12'	PILING COVERS	
7.	"	30	3/8" X 12' X 12'	CAP PLATES	
8.	CREO. TIMBER	2	12" X 12" X 26'	PILING CAP	624 FBM
9.	PLANKING	24	3" X 12" X 26'	ABUT. BACKING	1872 "
10.	"	40	3" X 12" X 10'	WING BACKING	1200 "
11.	"	4	3" X 12" X 6'	"	72 "
12.	"	4	3" X 12" X 4'	"	48 "
13.	CONCRETE	12.5 CY.	6" REINF. DECK	6 BAG MIX	
14.	GUARD RAIL		6 SECTIONS	S.H. FLEX BEAM	

ESTIMATED QUANTITIES

STRUCTURAL STEEL	44,284
REINF. ROD	1,107
EXCAVATION	100 CY.