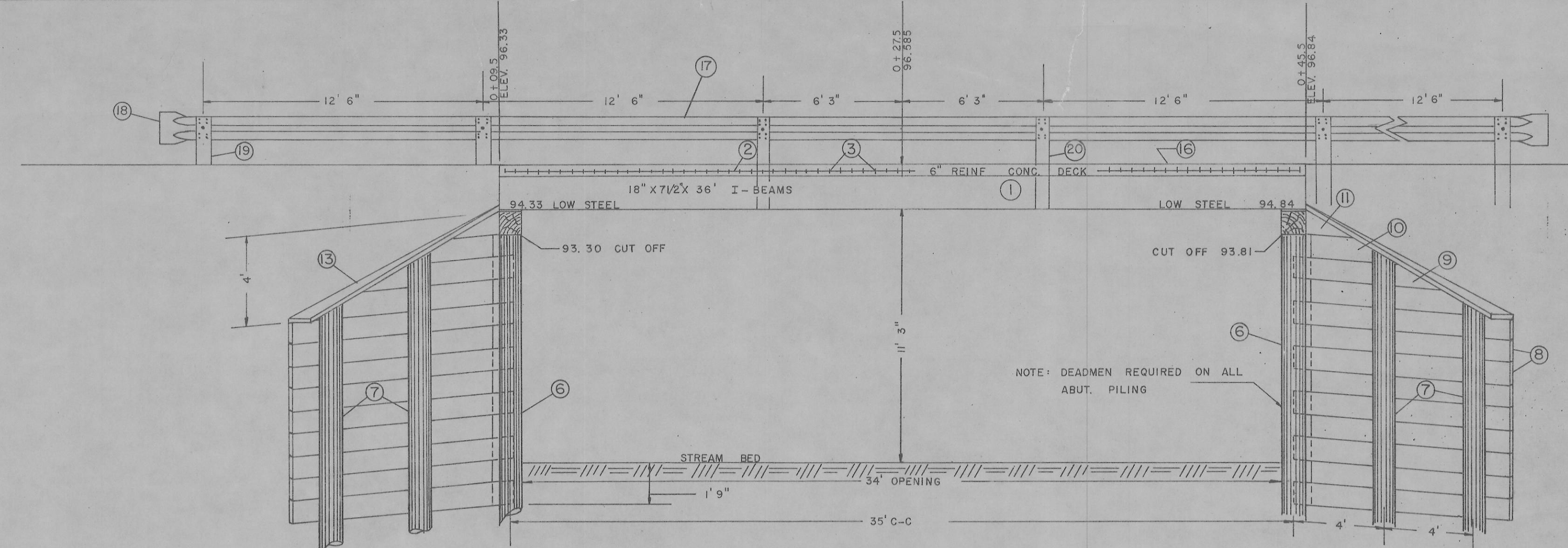
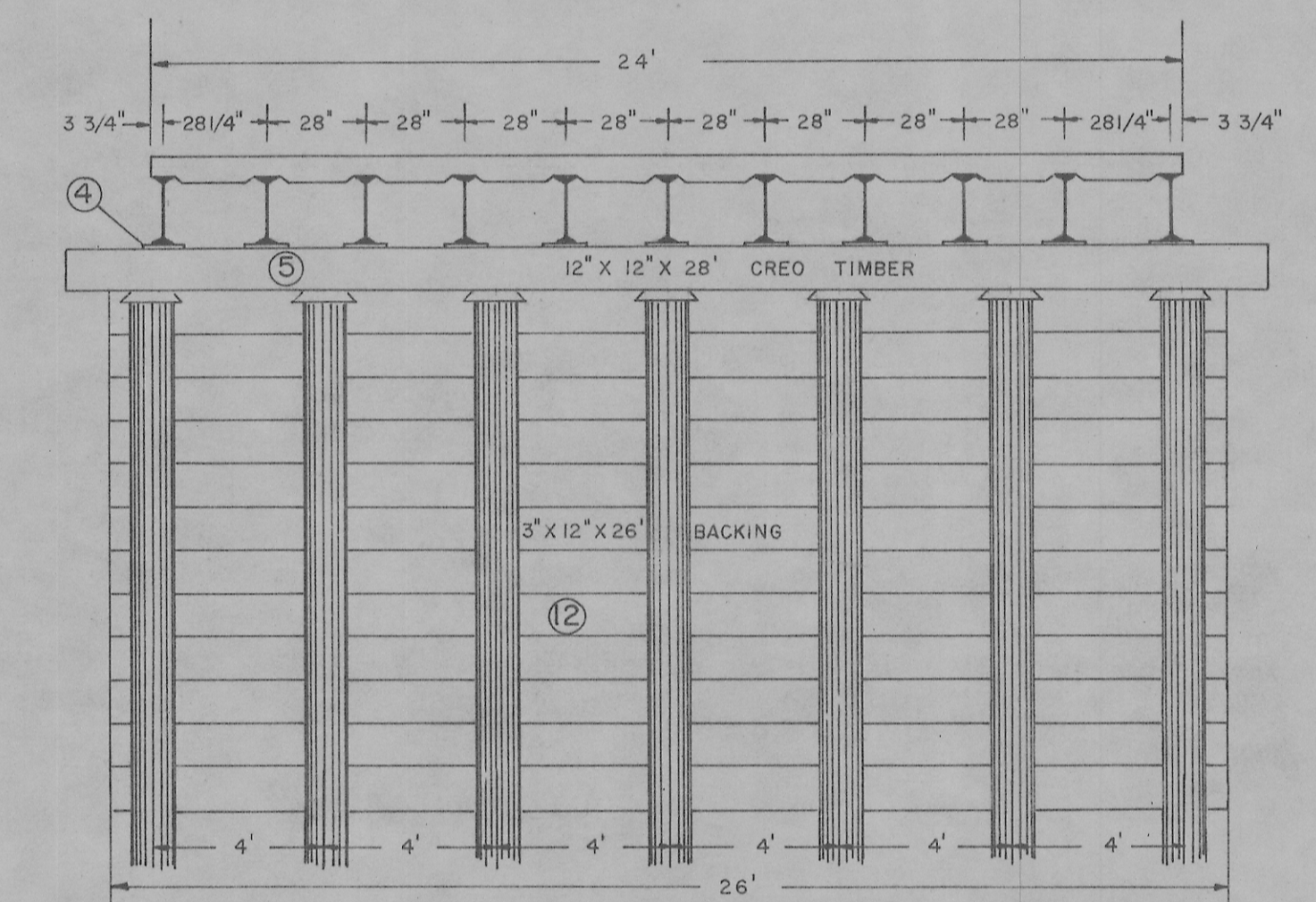


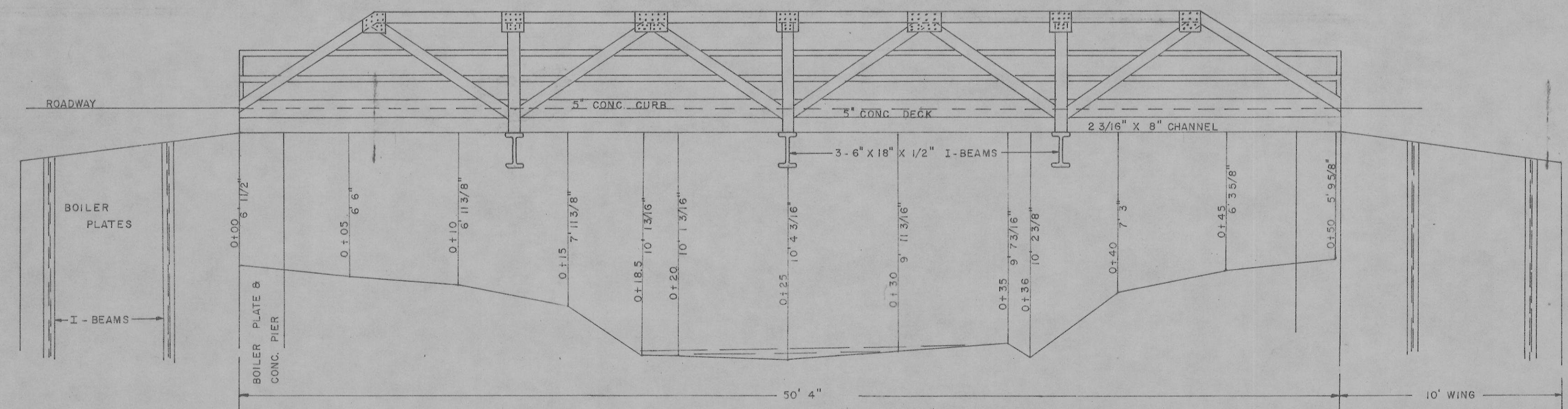
PLANVIEW  
SCALE 1/4" = 1'



SIDEVIEW  
SCALE 1/4" = 1'



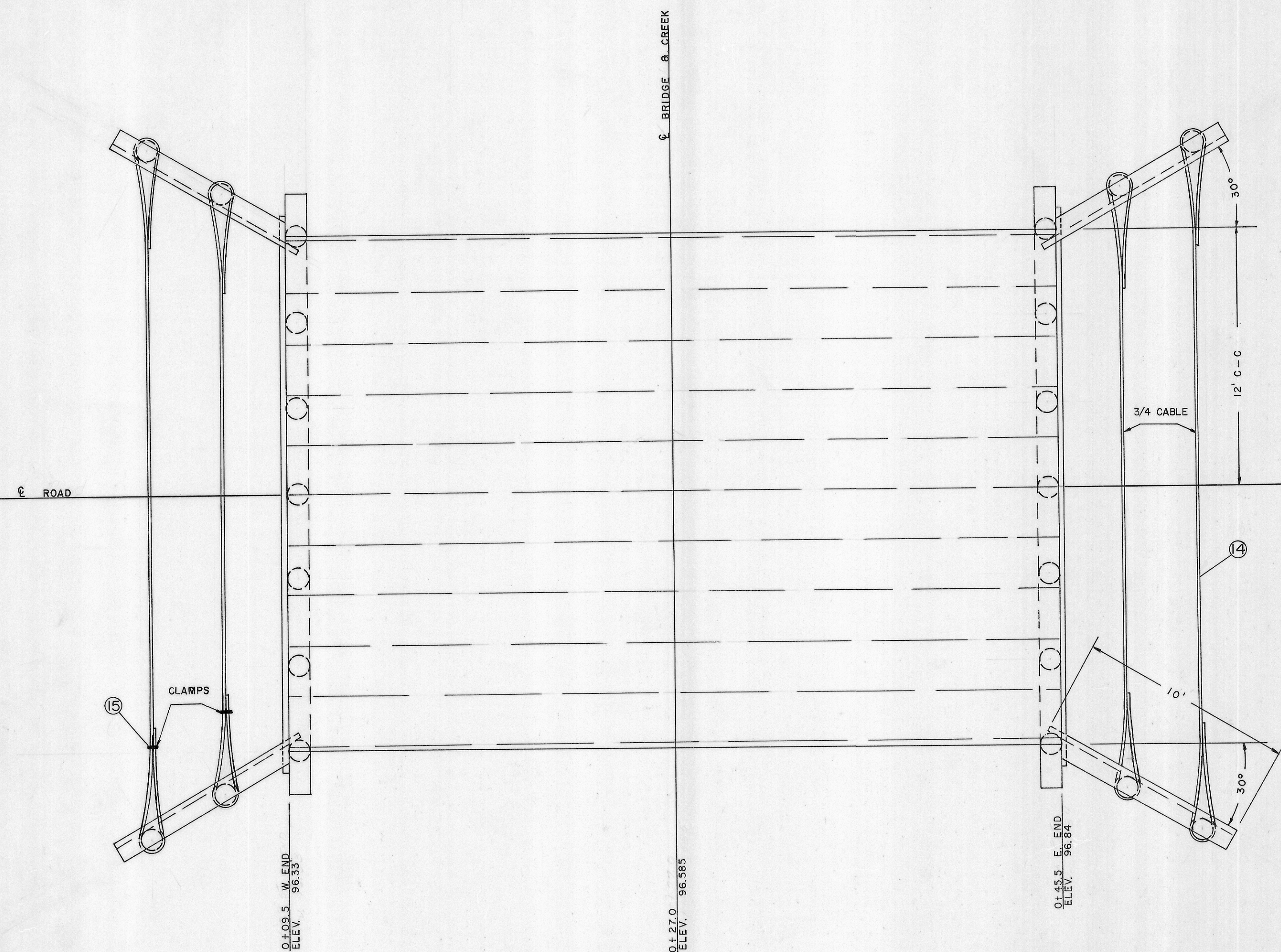
ENDVIEW  
SCALE 1/4" = 1'



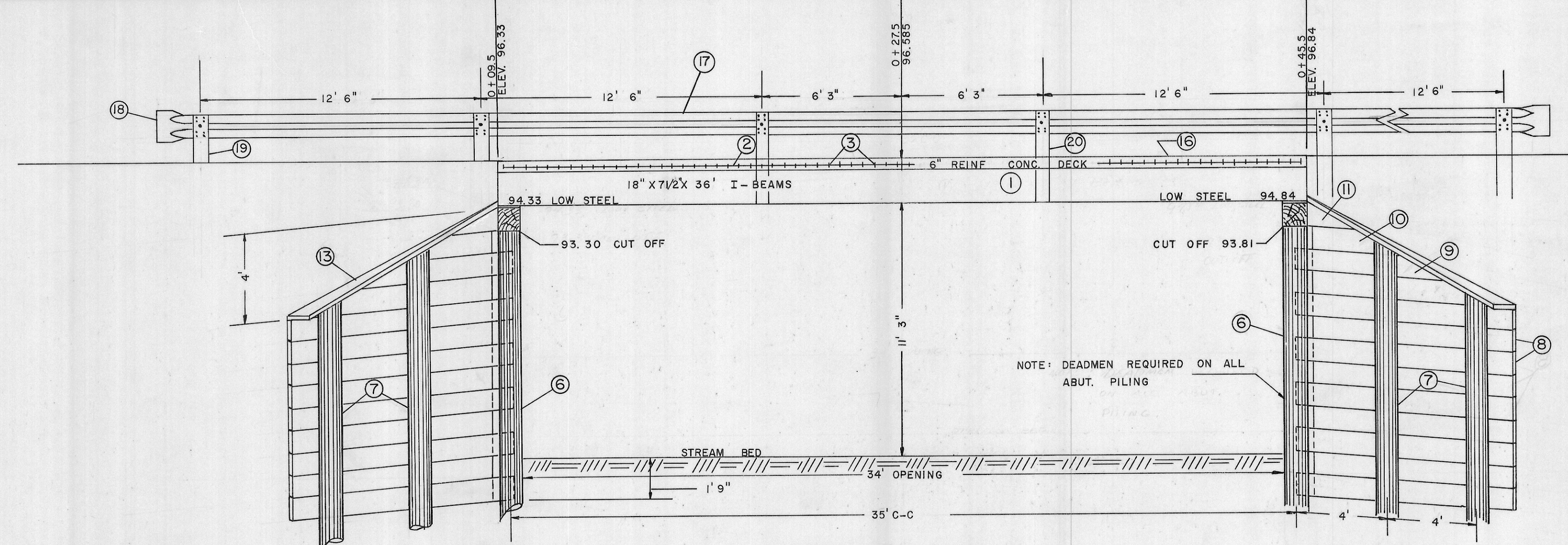
OLD STRUCTURE  
DECK 50' 4" X 15' 9 1/2"  
SCALE 1/4" = 1'

BILL OF MATERIAL					
NO.	MATERIAL	QTY.	SIZE	DESCRIPTION	SPACING
1	I-BEAMS	11	7 1/2" X 18" X 36"	STRINGERS 50 #/FT.	28" CTRS, EXCEPT 2-OUTSIDE 28 1/4"
2	REINF. ROD	48	1/2" X 35' 6"	LONGIT. .66# / FT.	1704'
3	"	75	1/2" X 23' 6"	TRANSVERSE "	1762'
4	STEEL PLATE	22	3/8" X 12" X 12"	PLATES ON CAP	
5	CREO TIMBER	2	12" X 12" X 28'	PILING CAP	672 FBM
6	PILES ABUT.	14	50'		4' CTRS.
7	" WING	8	30'		4' CTRS.
8	PLANKING	40	3" X 12" X 10'	BACKING WING WALL	1,200 FBM
9	"	4	3" X 12" X 8'	" " "	96 "
10	"	4	3" X 12" X 6'	" " "	72 "
11	"	4	3" X 12" X 4'	" " "	48 "
12	"	24	3" X 12" X 26'	" ABUT.	1,872 "
13	"	4	3" X 12" X 10'	WING COVERS	120 "
14	CABLE		3/4" X 170'	" TIES	
15	CLAMPS	8	3/4"	CABLE CLAMPS	
16	CONCRETE	16.2 C.Y.	6" X 24" X 36" DECK	6 BAG MIX	
17	GUARD RAIL	10	SECTIONS	FLEX BEAM GUARDRAIL	
18	"	4	"	TERMINAL SECTIONS	
19	POST	8	6" X 8" X 6'	TREATED STEEL	12' 6" CTRS. 12' 6" CTRS.
20	"	4	"	"	"

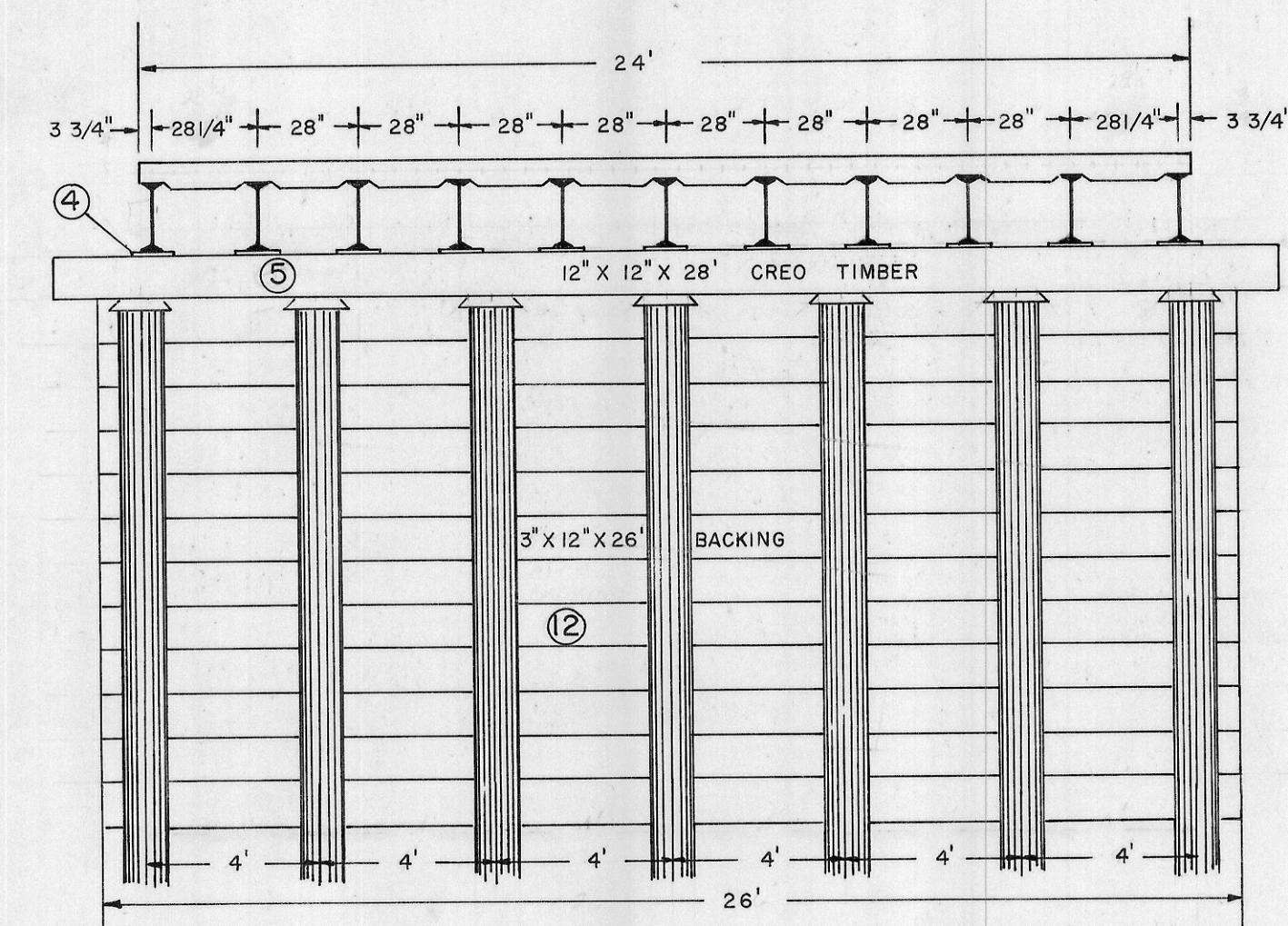
ESTIMATED QTY.	
STRUCTURAL STEEL	25,000
REINF. ROD	2,290 LBS.
EXCAVATION	40 C.Y.
FILL	100 C.Y.



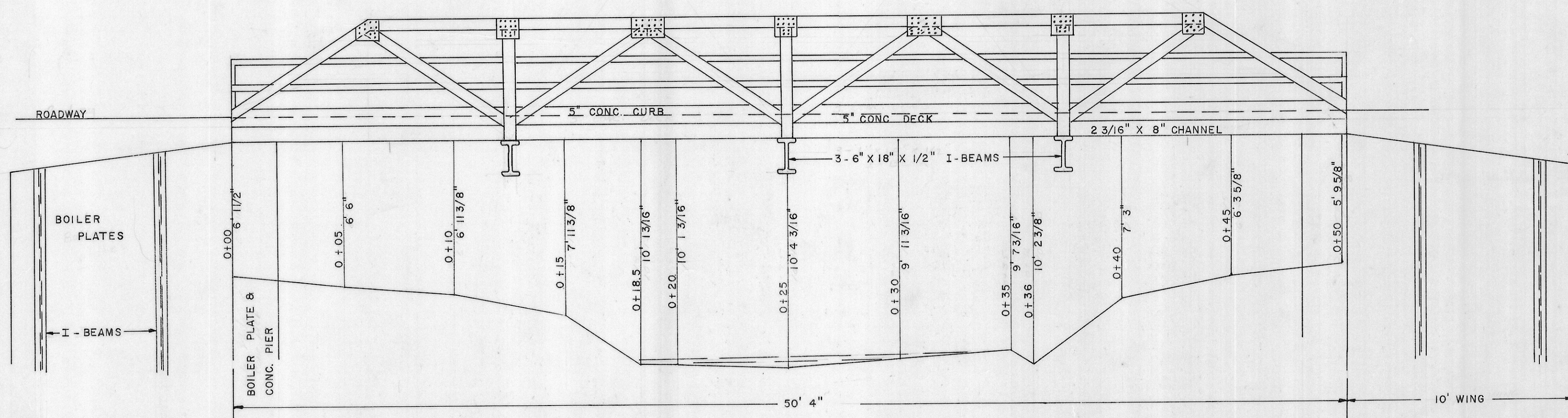
PLANVIEW  
SCALE 1/4" = 1'



SIDEVIEW  
SCALE 1/4" = 1'



ENDVIEW  
SCALE 1/4" = 1'



OLD STRUCTURE  
DECK 50' 4" X 15' 9 1/2"  
SCALE 1/4" = 1'

BILL OF MATERIAL					
NO.	MATERIAL	QTY.	SIZE	DESCRIPTION	SPACING
1	I - BEAMS	11	7 1/2" X 18" X 36"	STRINGERS	50 #/ FT. 28" CTRS, EXCEPT 2-OUTSIDE 28 1/4"
2	REINF. ROD	48	1/2" X 35' 6"	LONGIT.	.66 #/ FT. 1704' 6" CTRS
3	"	75	1/2" X 23' 6"	TRANSVERSE	" " 1762' "
4	STEEL PLATE	22	3/8" X 12" X 12"	PLATES ON CAP	" " "
5	CREO TIMBER	2	12" X 12" X 28'	PILING CAP	672 FBM
6	PILES ABUT.	14	50'	"	4' CTRS.
7	" WING	8	30'	"	4' CTRS.
8	PLANKING	40	3" X 12" X 10'	BACKING WING WALL	1,200 FBM
9	"	4	3" X 12" X 8'	" " "	96 "
10	"	4	3" X 12" X 6'	" " "	72 "
11	"	4	3" X 12" X 4'	" " "	48 "
12	"	24	3" X 12" X 26'	" ABUT.	1,872 "
13	"	4	3" X 12" X 10'	WING COVERS	120 "
14	"	8	3/4" X 170'	" TIES	"
15	CLAMPS	8	3/4"	CABLE CLAMPS	"
16	CONCRETE	16.2 C.Y.	6" X 24" X 36" DECK	6 BAG MIX	"
17	GUARD RAIL	10	SECTIONS	FLEX BEAM GUARDRAIL	"
18	"	4	"	TERMINAL SECTIONS	"
19	POST	8	6" X 8" X 6'	TREATED STEEL	12' 6" CTRS. 12' 6" CTRS.
20	"	4	"	"	"

ESTIMATED QTY.  
STRUCTURAL STEEL 25,000  
REINF ROD 2,290 LBS.  
EXCAVATION 40 C.Y.  
FILL 100 C.Y.