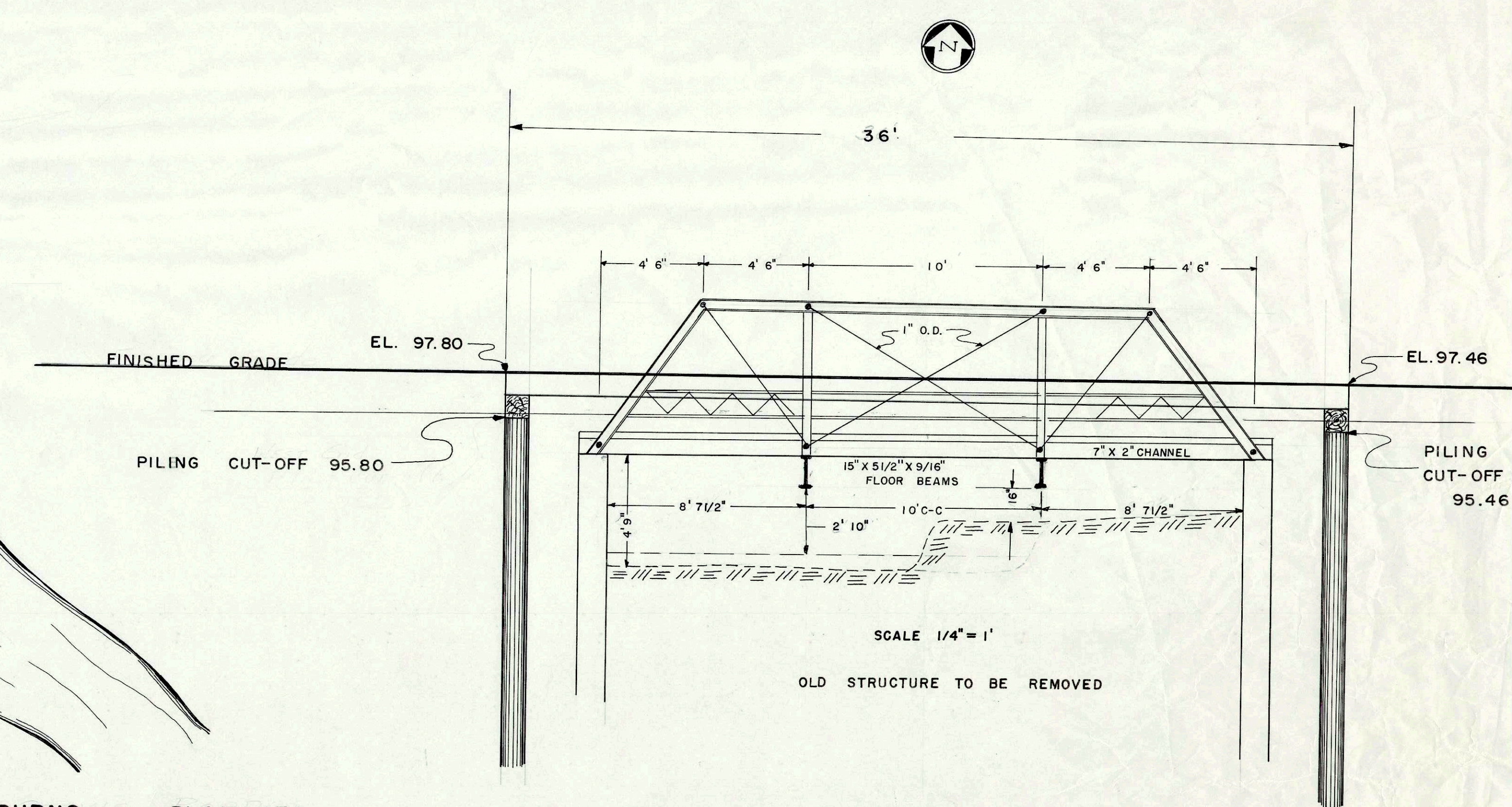
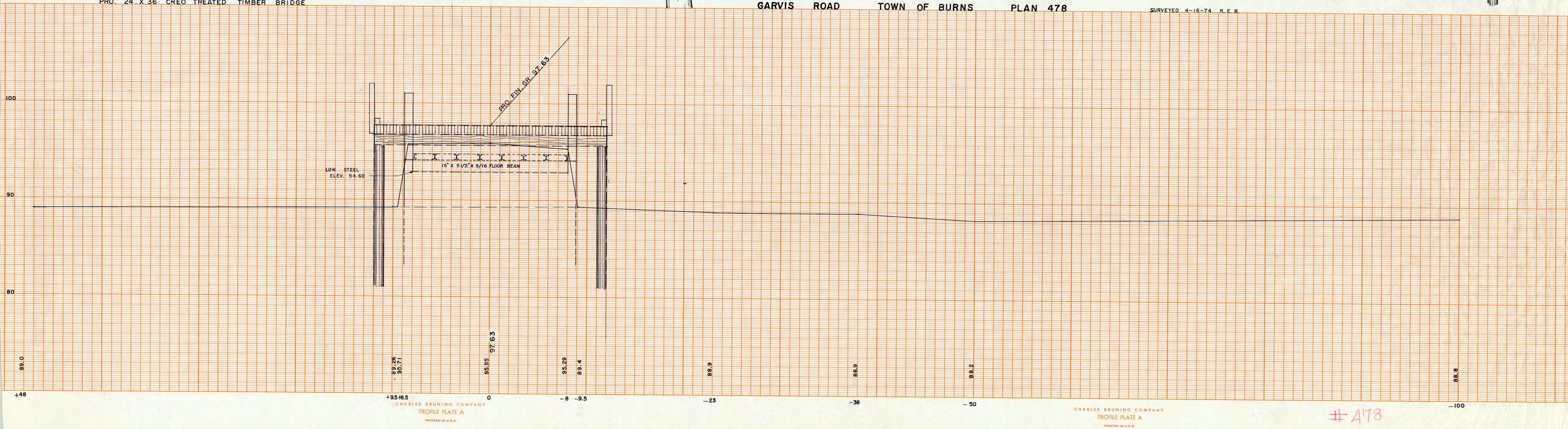


PRO. 24' X 36' CREO TREATED TIMBER BRIDGE



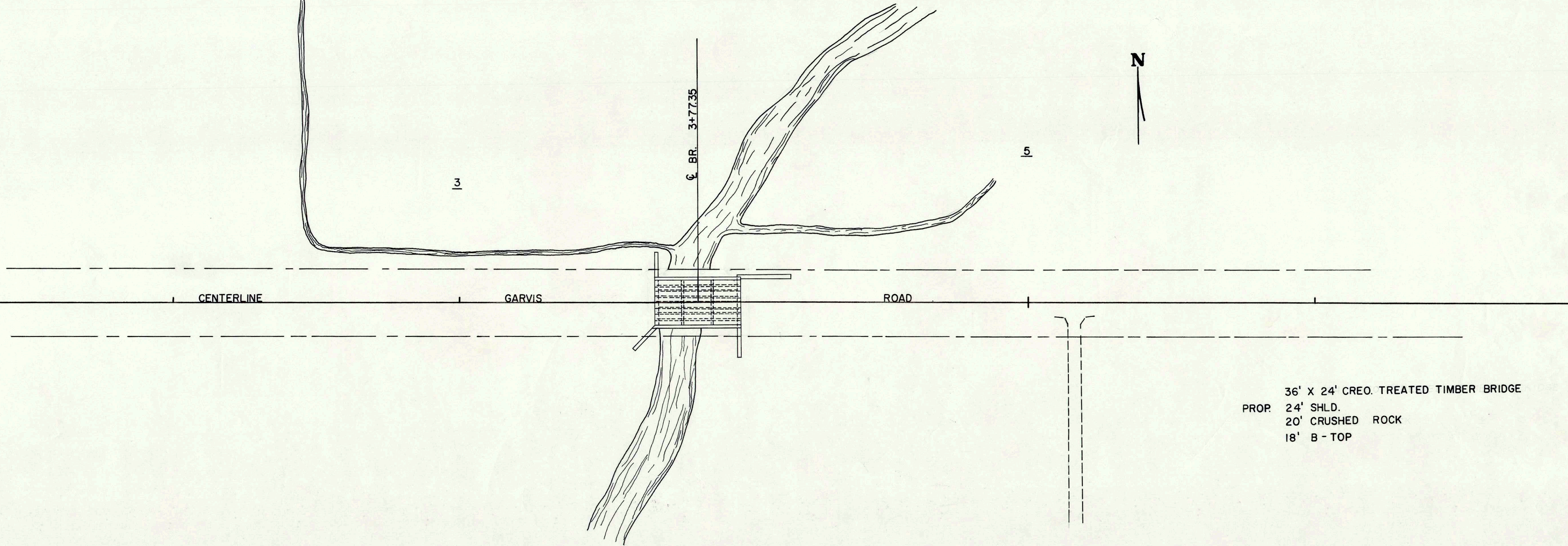
GARVIS ROAD TOWN OF BURNS PLAN 478

SURVEYED 4-16-74 R.E.B.





f. STH "162"



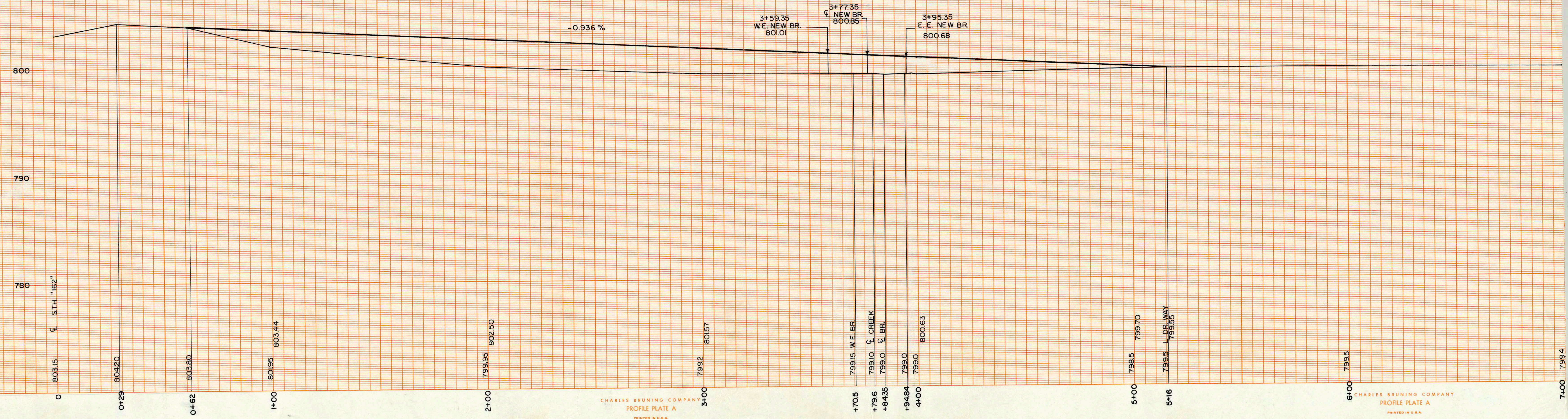
36' X 24' CREO. TREATED TIMBER BRIDGE  
 PROP. 24' SHLD.  
 20' CRUSHED ROCK  
 18' B - TOP

DRAINAGE 4576 ACRES

GARVIS ROAD TOWN OF BURNS PLAN 478

SCALE: 20'=1"

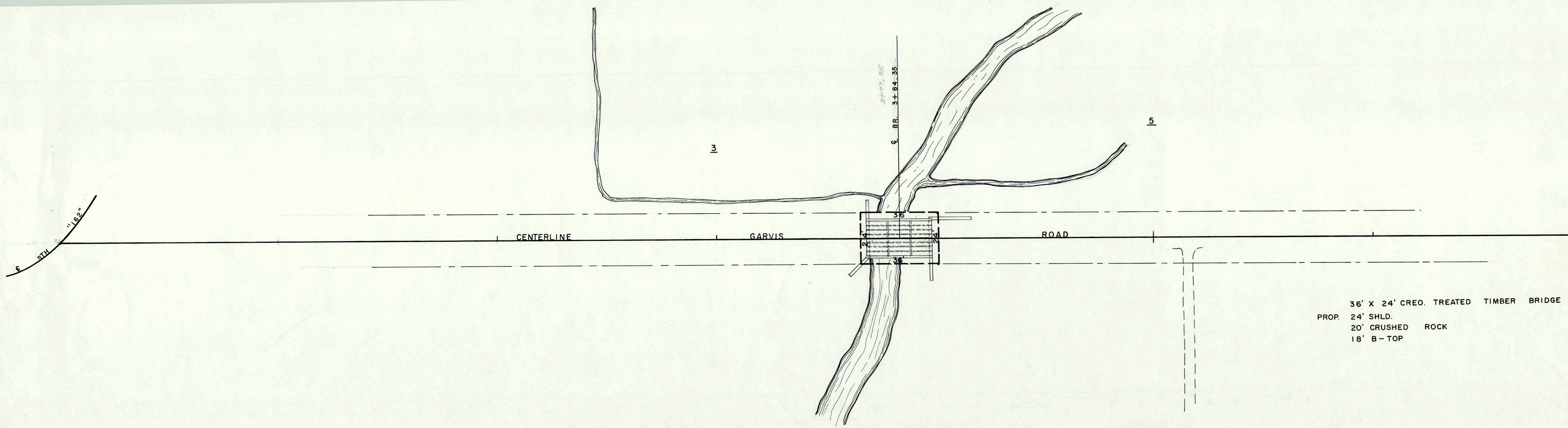
DRAWN BY L.E.H.  
 SURVEYED 4-16-74 R.E.B.



CHARLES BRUNING COMPANY  
 PROFILE PLATE A  
 PRINTED IN U.S.A.

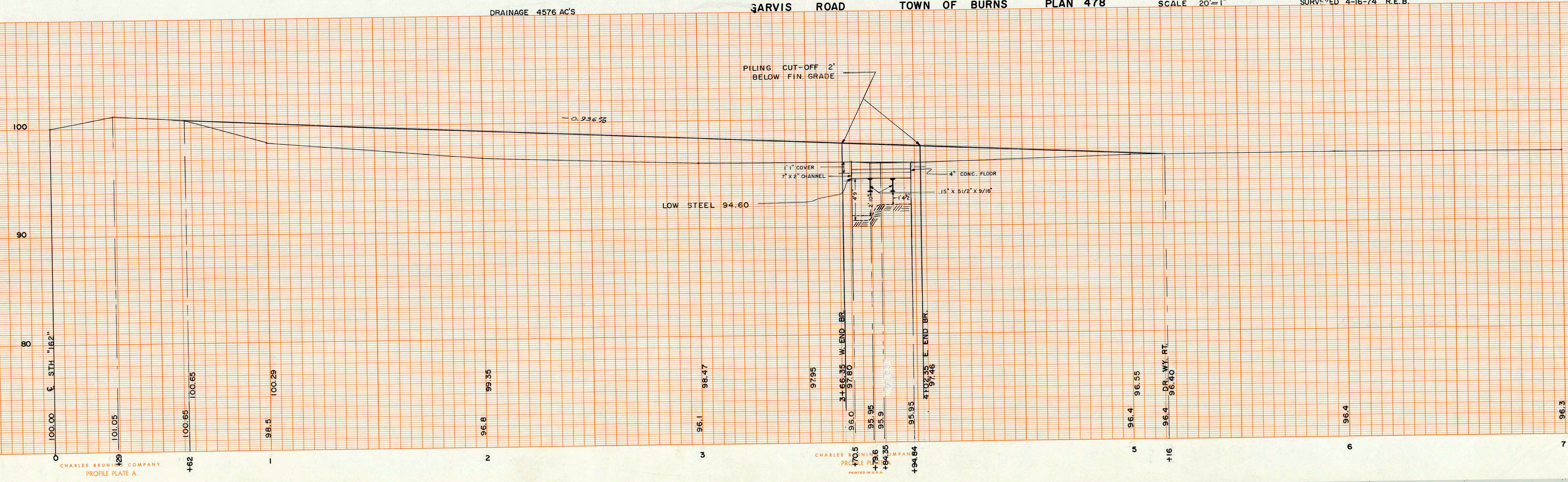
CHARLES BRUNING COMPANY  
 PROFILE PLATE A  
 PRINTED IN U.S.A.



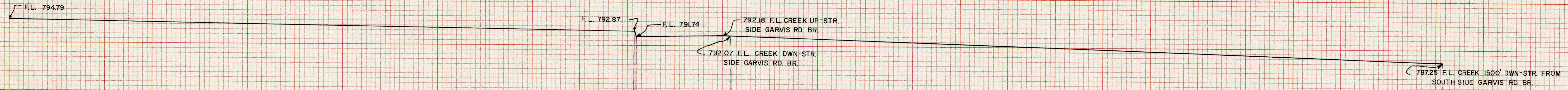


36' X 24' CREO. TREATED TIMBER BRIDGE  
 PROP. 24' SHLD.  
 20' CRUSHED ROCK  
 18' B - TOP

DRWN. P.W.J.  
 SURVEYED 4-16-74 R.E.B.







800  
 790  
 780 U.S.G.S. DATUM

F.L. 792.87  
 F.L. 791.74  
 792.18 F.L. CREEK UP-STR.  
 SIDE GARVIS RD. BR.  
 792.07 F.L. CREEK DWN-STR.  
 SIDE GARVIS RD. BR.

787.25 F.L. CREEK 1500' DWN-STR. FROM  
 SOUTH SIDE GARVIS RD. BR.

18+00

185.4  
 183.3  
 UP-STR. SIDE OF RAPIDS  
 DWN-STR. SIDE OF RAPIDS

0400  
 0416  
 NORTH SIDE BR.  
 SOUTH SIDE BR.

18+16

PROFILE  
 BURNS CREEK  
 NORTH & SOUTH  
 OF GARVIS COULEE RD.  
 TOWN OF BURNS  
 SCALE: 1"=100' HOZ.  
 1"=10' VERT.  
 9-26-74