

96.42
2106.5

96.51
2100

97.23
1750

97.41
1700

97.68
0750

97.87
0732.7 E. H. RT.

97.92
0717.8 W. H. T. R. W.

98.92
0717.9 E.

99.92
0750

98.55
98.75
Top of M. H. Grate 35.00

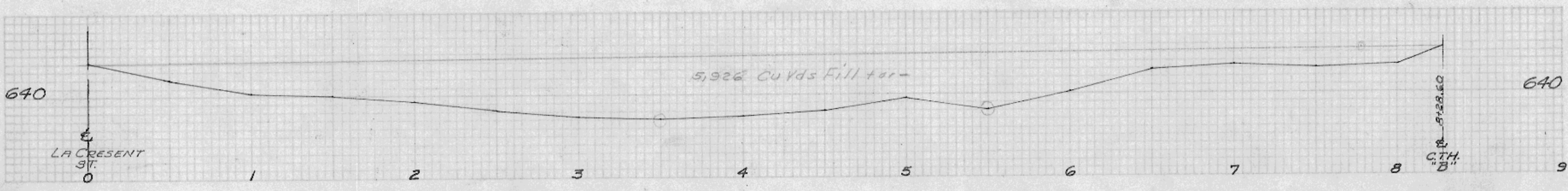
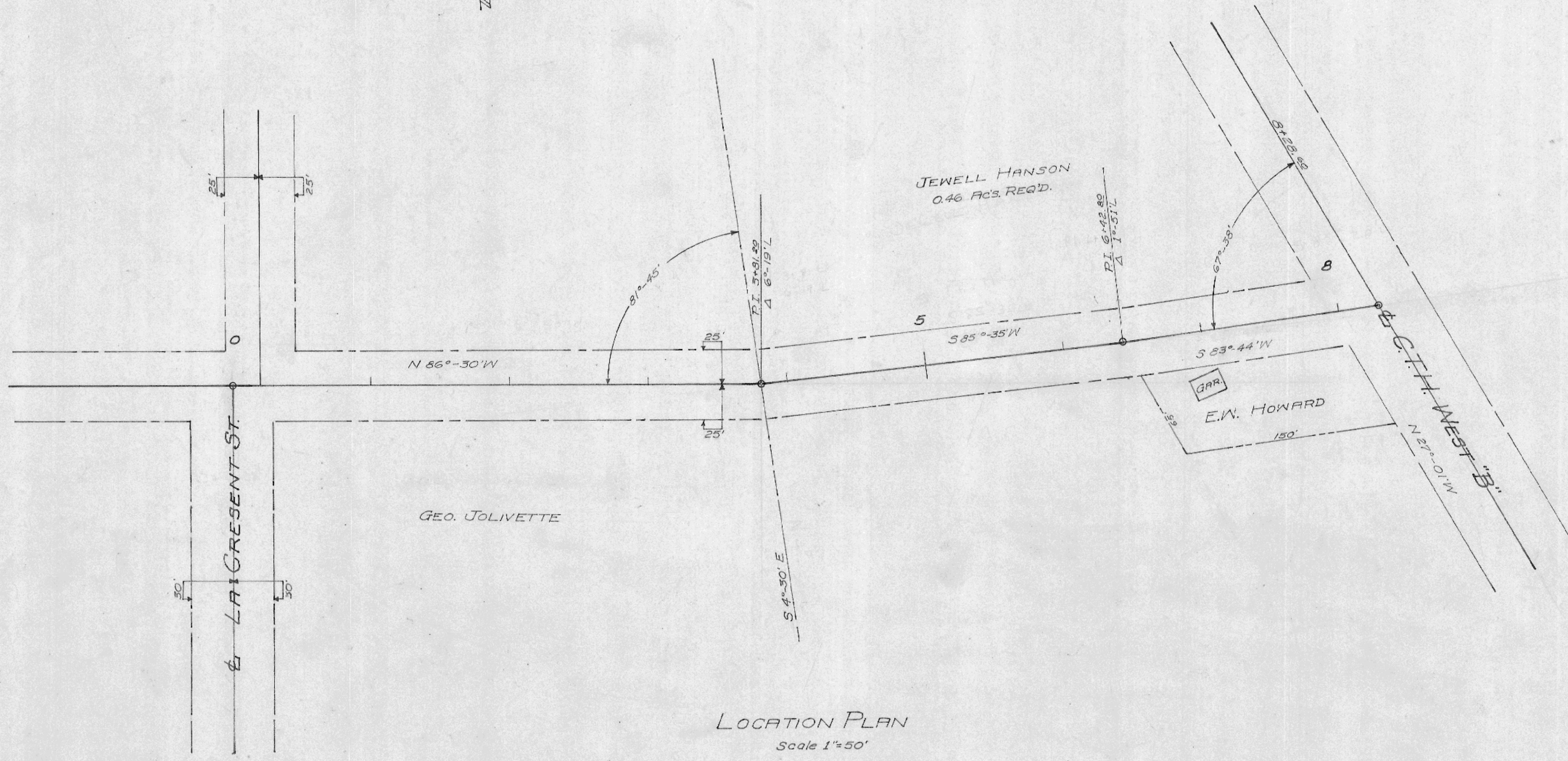
98.42
2150
4 = 1.5416

98.52
98.92
10.5
0.45
EST

75.62
75.70
11.5
11.5
GUT Line
Cut BT

98.92
2150.6 & PARK BT.

XSECTIONS ELM ST.
W LACRESENT
4-17-80

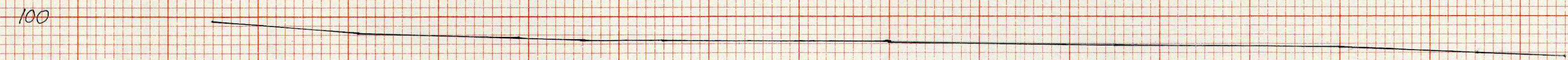


PROFILE
1"=30' Hor.
Scale 1"=10' Vert.

LACROSSE COUNTY HIGHWAY DEPARTMENT	
PAUL A. HARTWIG	HIGHWAY COMMISSIONER
ROAD <i>Elm Street Extension</i> TOWN <i>Campbell</i>	
SURVEYED BY <i>R.D. Nagle</i>	DATE <i>9-26-62</i>
FIELD BOOK <i>70</i>	
LEVEL BOOK	
DRAWN BY <i>REB.</i>	DATE <i>9-27-62</i>
CHECKED BY	DATE
APPROVED BY	DATE

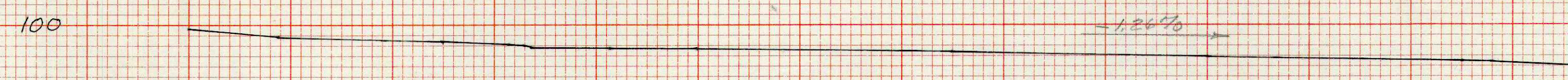
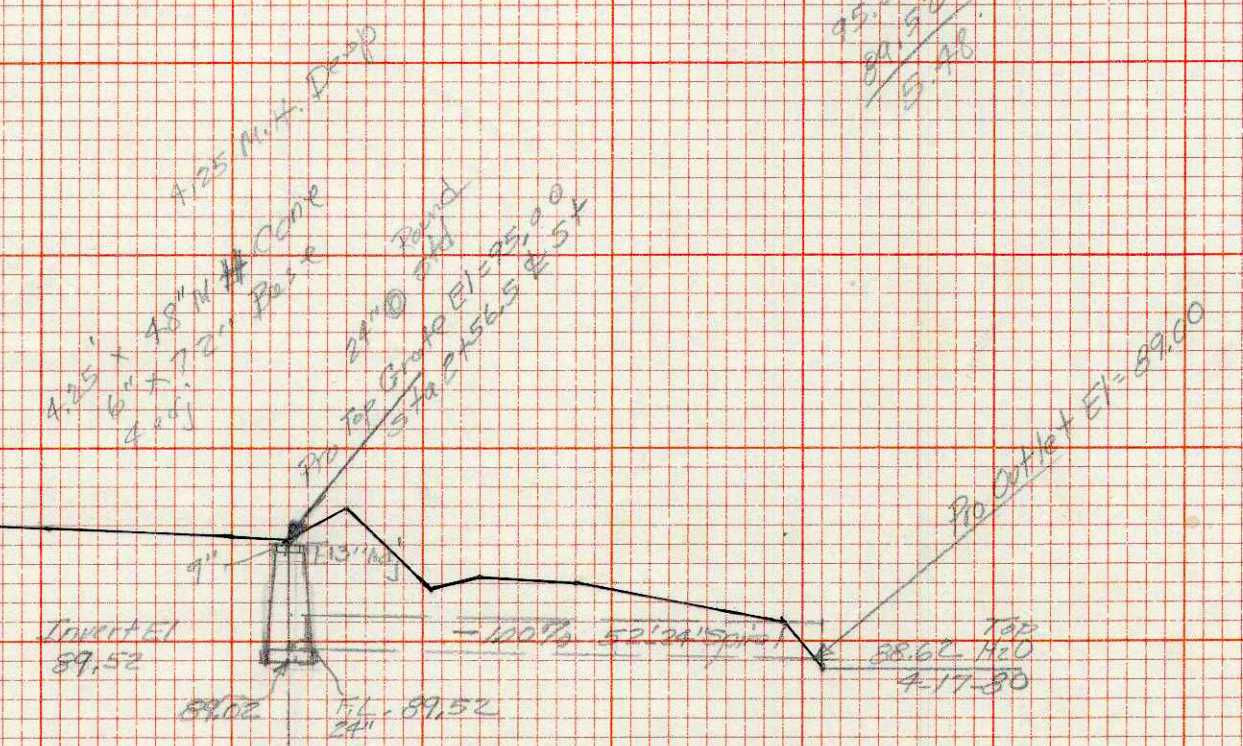
PROFILE GUT ELV
ELM ST. W LACRESENT
4-17-80

MATERIAL
4.25' x 4.5' M.H. (Cone)
6" x 12" Base
24" Neerley Grate (Casting)
57' - 24" S.M.C.



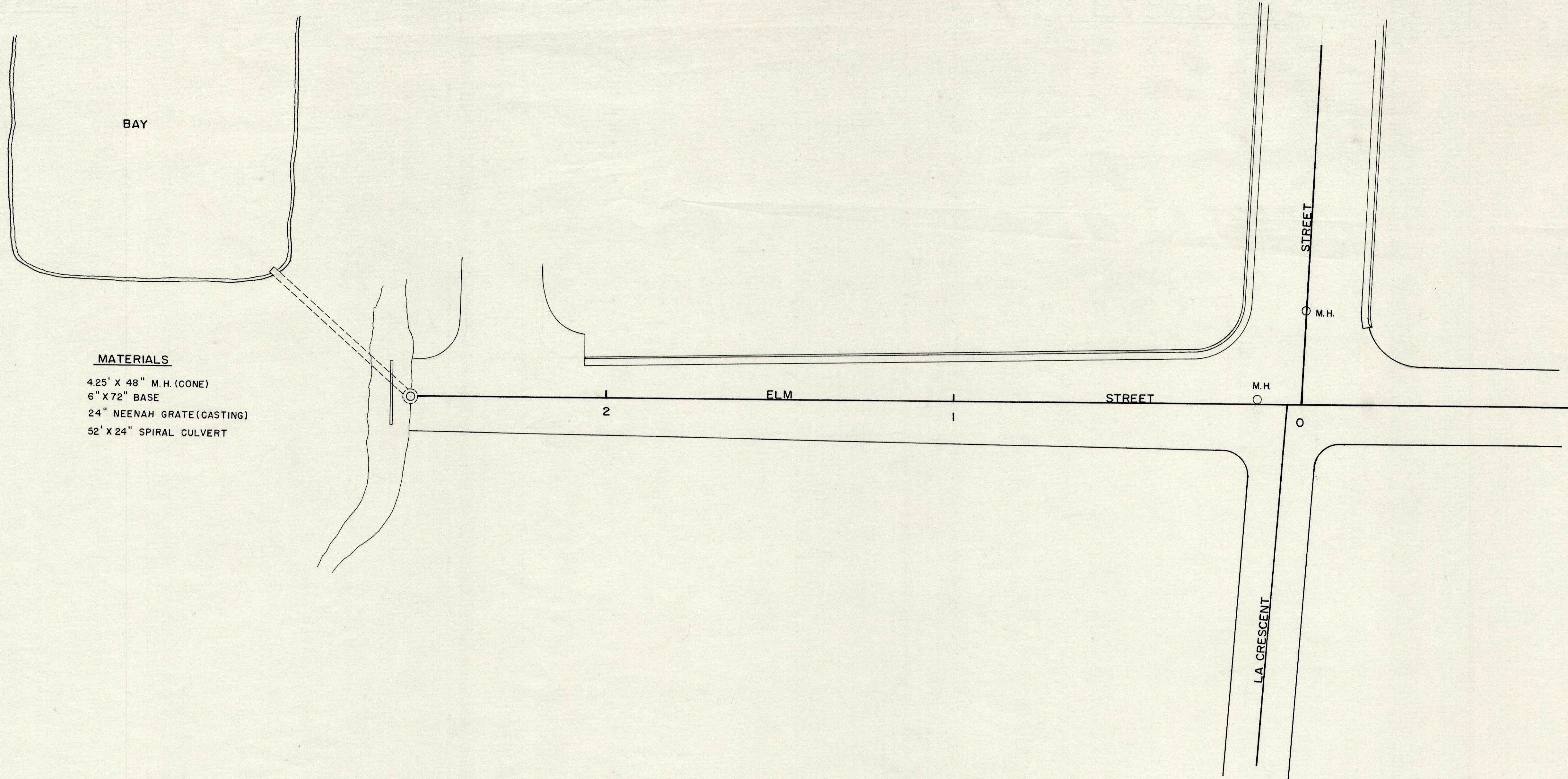
99.56 0-17.9
98.16 0-17.9
97.66 0-17.9
97.37 0-17.9
97.34 0-150
97.27 1400
96.95 1450
96.47 2400
96.41 2400.5
96.04 2450.6
95.62 2450.7

PROFILE
ELM ST. W LACRESENT
4-17-80



99.82 0-17.9
98.92 0-17.9
98.56 0-17.9
98.02 0-17.9
97.87 0-17.9
97.68 0-17.9
97.03 1450
96.51 2400
96.45 2400.5
95.82 2450.6
95.42 2450.7
95.23 2450.7
94.82 2450.7
94.71 2450.7
94.52 2450.7
93.02 2486
90.92 2486
90.06 2486
89.52 2486

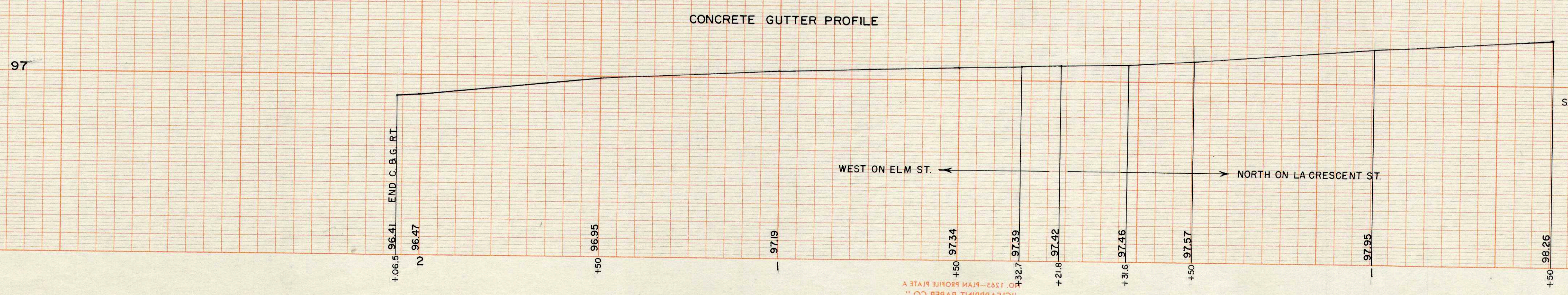
TOP BANK 90.92
TO PH20 89.52



SCALE: 1" = 20'



SCALE: 1" = 20' HOZ.
1" = 10' VERT.



SCALE: 1" = 20' HOZ.
1" = 2' VERT.

1:500 - PLAN PROFILE RATE A
"CLEARPRINT PAPER CO."
MADE IN U.S.A.