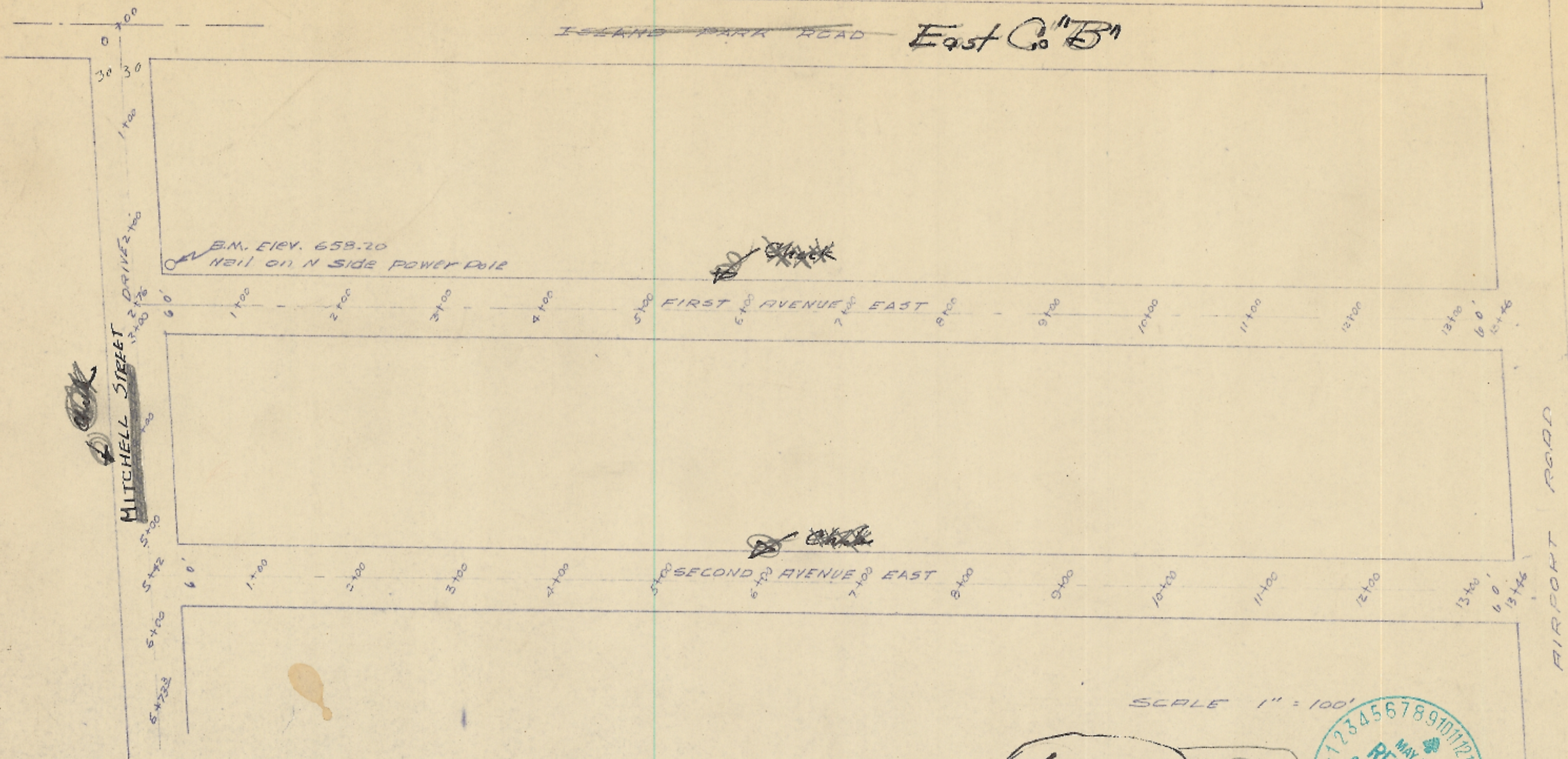


ISLAND PARK ADDITION ROAD GRADE

~~ISLAND PARK ROAD~~ East Co. B

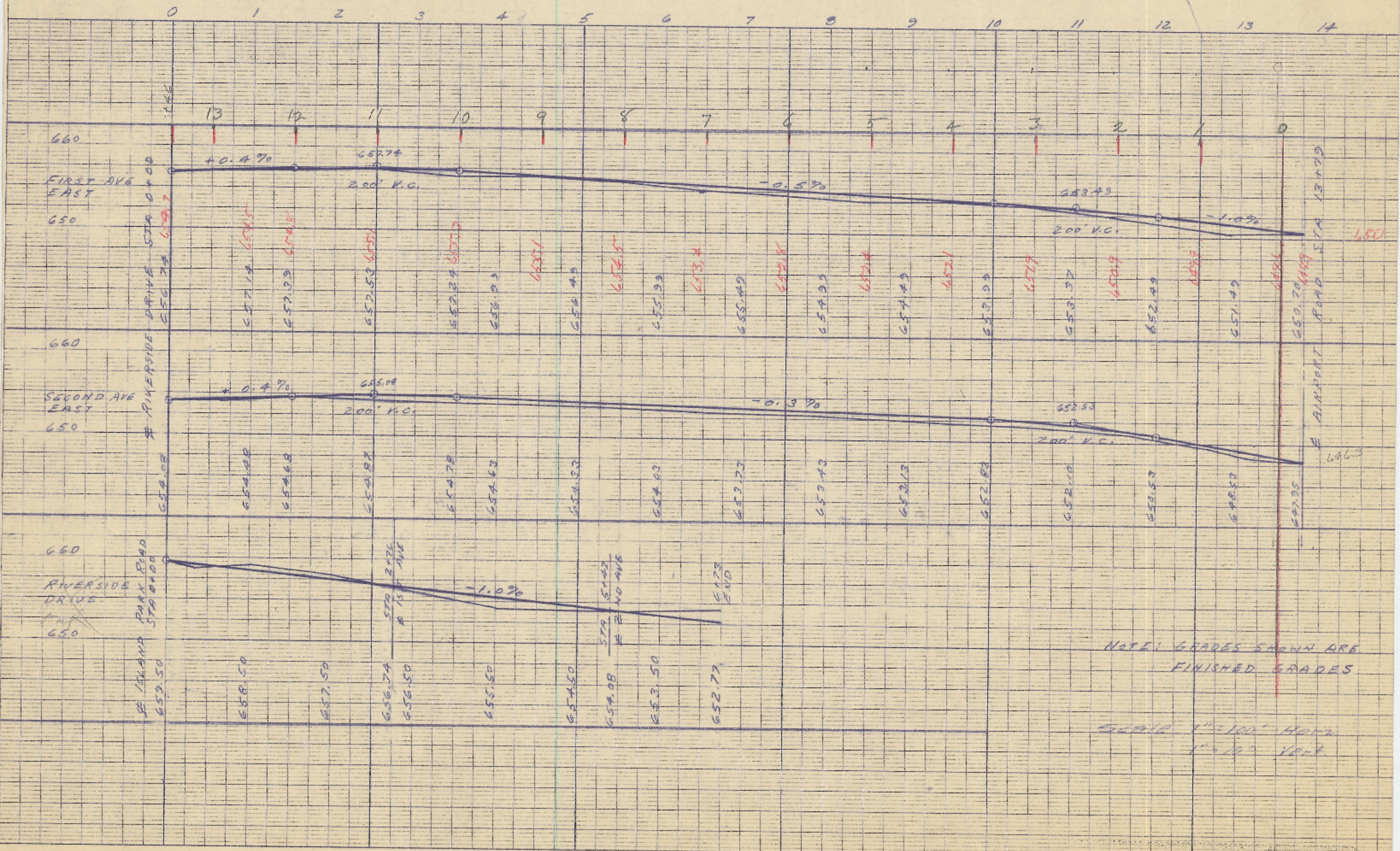


SCALE 1" = 100'

Approved if grades & cut are correct
May 18, 1956
Hotaling



SOLBERG & SCARSETH
5-7-56



NOTE: GRADES SHOWN ARE FINISHED GRADES

SCALE 1" = 100' HORIZ
1" = 10' VERT