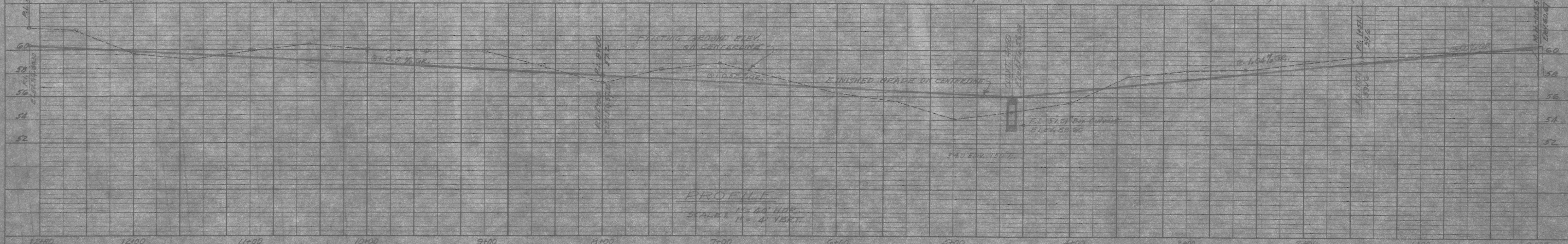
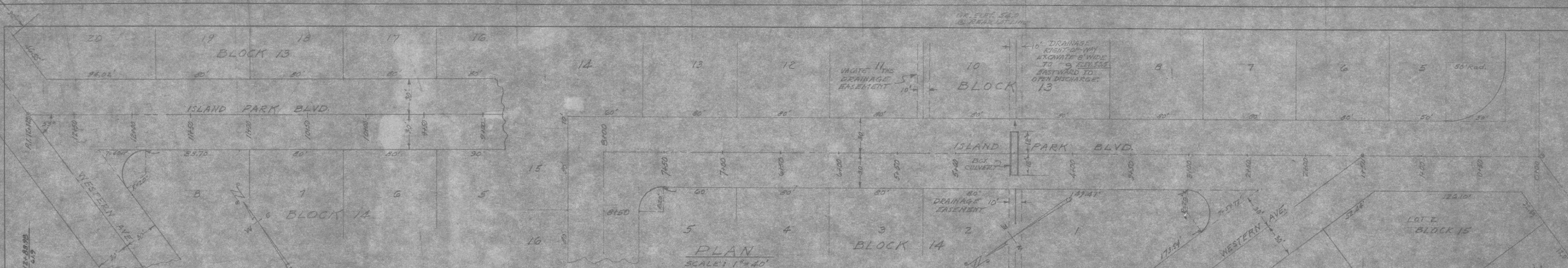


DATE: 7/1/65
 BY: E.P. B. 599
 DRAWN: E.P. B. 599
 CHECKED: E.P. B. 599
 PLAN
 SHEET NO. 2 OF 3 SHEETS

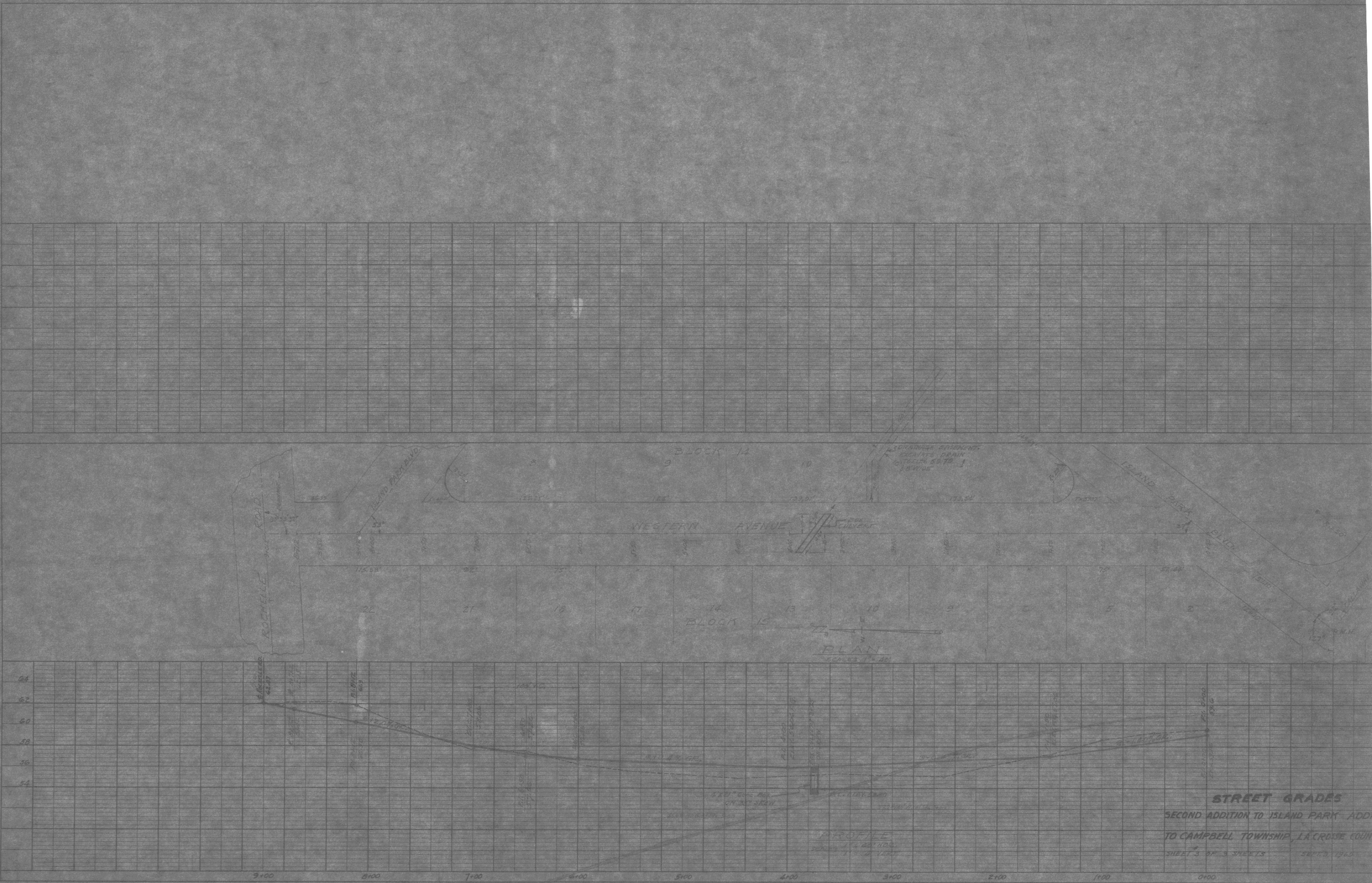
DATE: 7/1/65
 BY: E.P. B. 599
 DRAWN: E.P. B. 599
 CHECKED: E.P. B. 599
 PROFILE
 SHEET NO. 2 OF 3 SHEETS



STREET GRADES
 SECOND ADDITION TO ISLAND PARK ADDITION
 TO CAMPBELL TOWNSHIP, LA CROSSE COUNTY, WIS.
 SHEET 2 OF 3 SHEETS
 SEPT. 3, 1965

PLAN
 SHEET NO. _____
 DATE _____
 DRAWN BY _____
 CHECKED BY _____
 TITLE _____

PROFILE
 SHEET NO. _____
 DATE _____
 DRAWN BY _____
 CHECKED BY _____
 TITLE _____



STREET GRADES
 SECOND ADDITION TO ISLAND PARK ADDITION
 TO CAMPBELL TOWNSHIP, LA CROIXE COUNTY
 SHEET 3 OF 3 SHEETS SHEET 17145

101
100
99

-139 100.35 C DRIVEWAY LT.

100.06

100.32

100.42

-70 100.70 C DRIVEWAY LT.

-50 100.35

100.31

O 100.00 C OF GRATE

100.19

+50 100.29

+63.5 100.31 C DRIVEWAY LT.

100.36

+86 100.50 C DRIVEWAY LT.

100.33

100.03

+50 100.04

+58 99.93 LOW SPOT

+75 100.29

2

-0.25/70

+0.25/70

CHARLES BRUNING COMPANY

PROFILE PLATE A

PRINTED IN U.S.A.

Drainage on Western Ave.