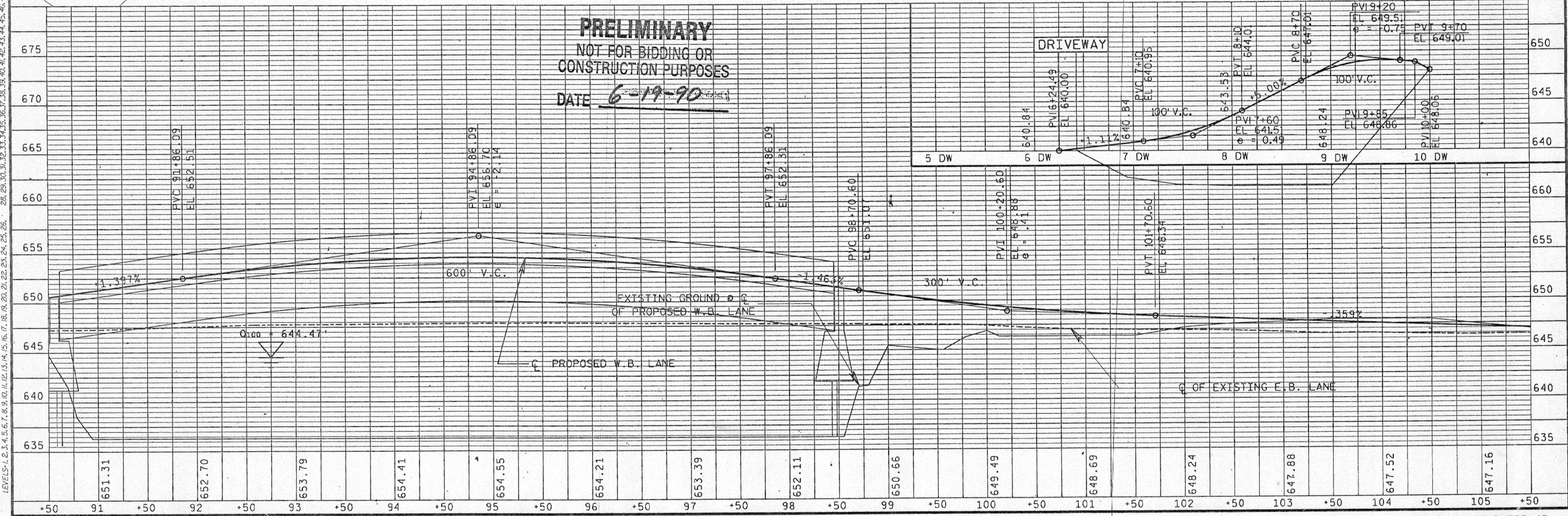


P.I. 108"A"+98.44	P.I. 108+64.53
Y 665111.74	Y 665155.68
X 1665498.22	X 1665485.14
$\Delta = 60^{\circ}44'44''$	$\Delta = 60^{\circ}44'44''$
D = 04°30'00"	D = 04°09'08"
T = 746.19	T = 808.72
L = 1349.90	L = 1463.02
E = 202.55	E = 219.52
R = 1273.24	R = 1379.93
P.C. 101"A"+52.25	P.C. 100+55.81
P.T. 115"A"+02.15	P.T. 115+18.83
S.E. 0.053	S.E. 0.053
L.R. 150	L.R. 150

BENCH MARKS			
NO.	STA.	DESCRIPTION	ELEV.
#1	90+94	63' RT. DISK STAMPED "F 16 1931"	648.10'
#2	98+68	17' LT. TOP OF NORTH PARAPET WALL	648.30'

NOTE: SEE DETAIL FOR PROPOSED R/W

PRELIMINARY
NOT FOR BIDDING OR
CONSTRUCTION PURPOSES
DATE 6-19-90

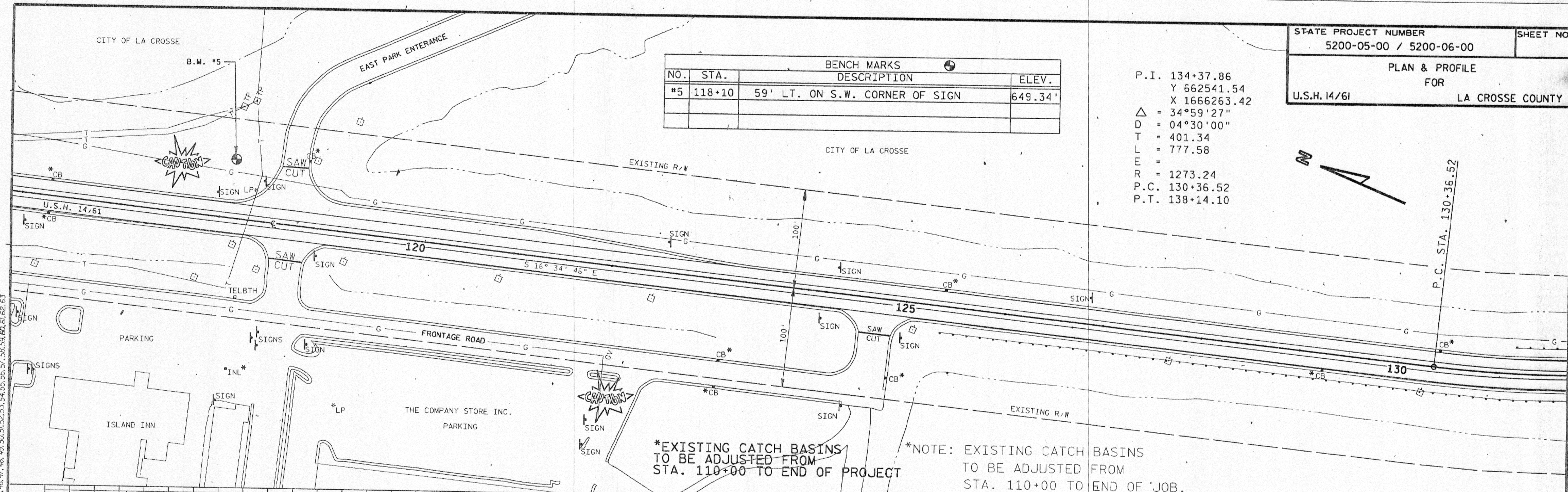


FILE NAME: 9141DD3.000
PLOT NAME: 9141DD3.000
SCALE: 50
DATE: 5-14-90
ORIGINATOR: CJK

LEVELS: 1, 2, 3, 4, 5, 6, 7, 8, 9, 10, 11, 12, 13, 14, 15, 16, 17, 18, 19, 20, 21, 22, 23, 24, 25, 26, 28, 29, 30, 31, 32, 33, 34, 35, 36, 37, 38, 39, 40, 41, 42, 43, 44, 45, 46, 47, 48, 49, 50, 51, 52, 53, 54, 55, 56, 57, 58, 59, 60, 61, 62, 63

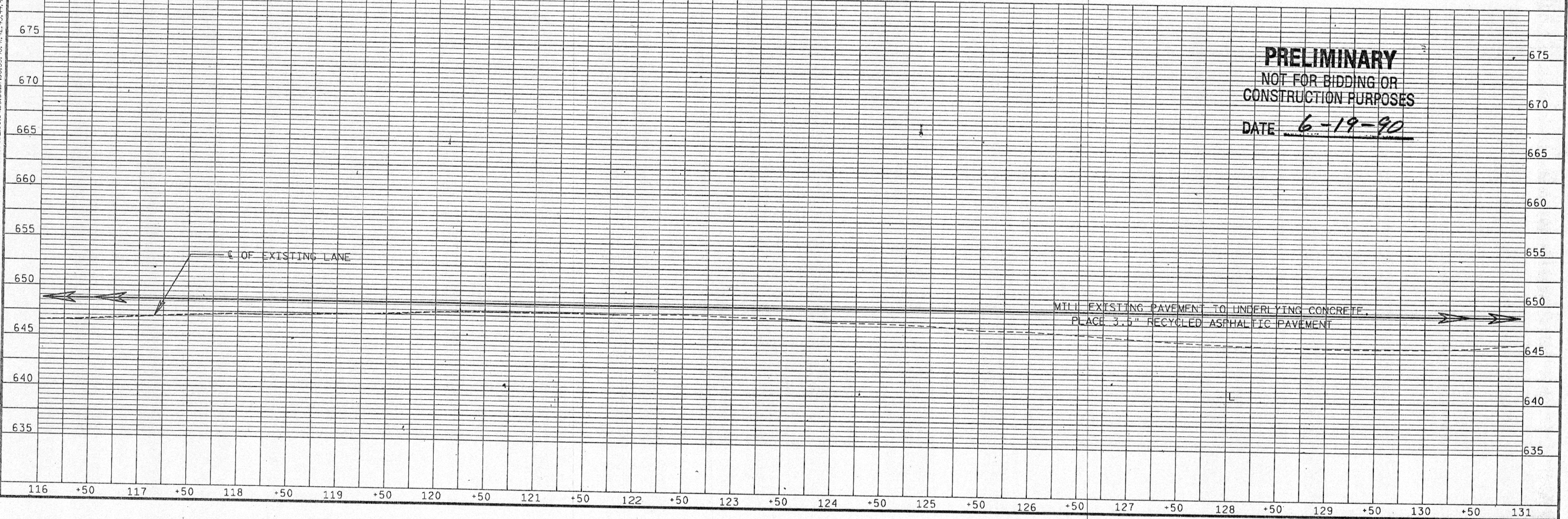
BENCH MARKS			
NO.	STA.	DESCRIPTION	ELEV.
#5	118+10	59' LT. ON S.W. CORNER OF SIGN	649.34'

P.I. 134+37.86
Y 662541.54
X 1666263.42
Δ = 34°59'27"
D = 04°30'00"
T = 401.34
L = 777.58
E =
R = 1273.24
P.C. 130+36.52
P.T. 138+14.10



*EXISTING CATCH BASINS TO BE ADJUSTED FROM STA. 110+00 TO END OF PROJECT

*NOTE: EXISTING CATCH BASINS TO BE ADJUSTED FROM STA. 110+00 TO END OF JOB.



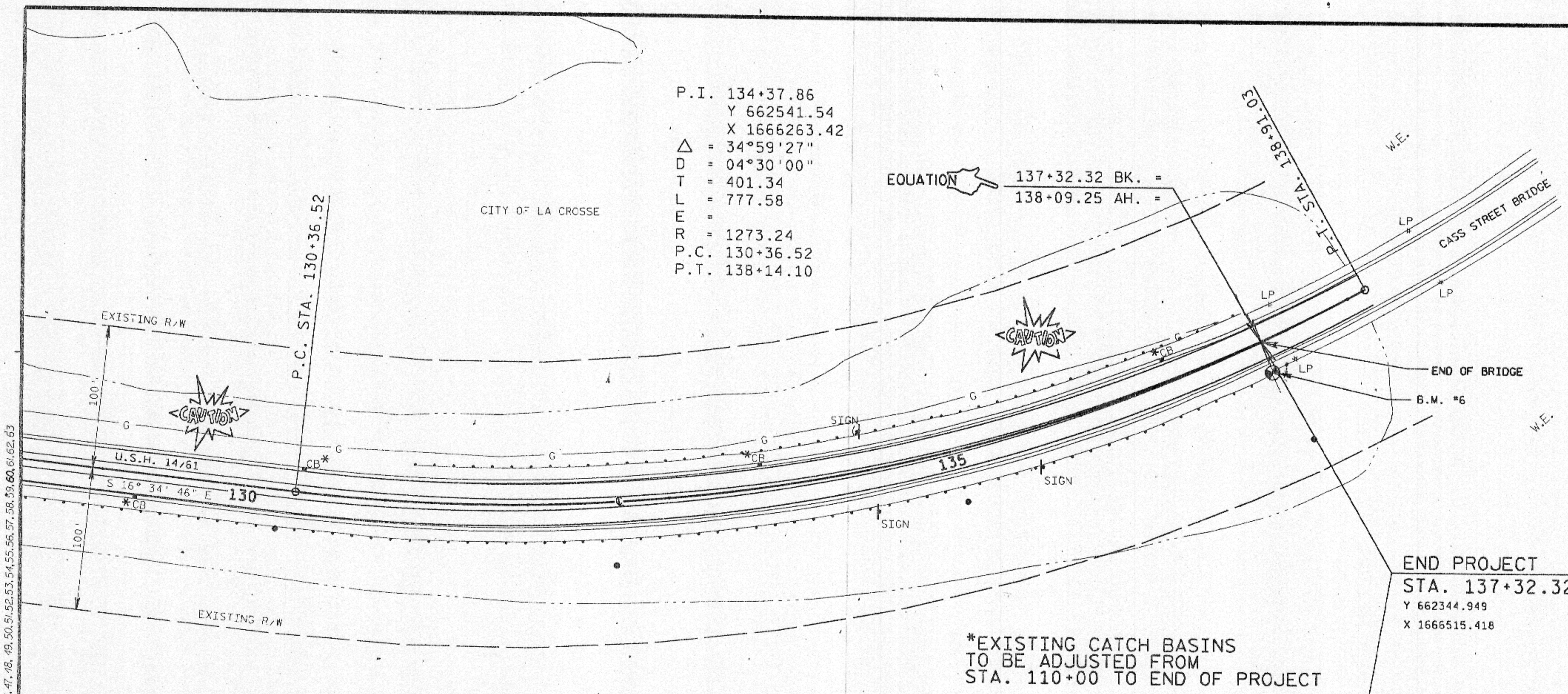
PRELIMINARY
NOT FOR BIDDING OR
CONSTRUCTION PURPOSES
DATE 6-19-90

FILE NAME: 9141DD5.dgn
PLOT NAME: 9141DD5.000
PLOT SCALE: 50
REV. DATE: 1-22-90
ORIGINATOR: C.J.G.

LEVELS: 1, 2, 3, 4, 5, 6, 7, 8, 9, 10, 11, 12, 13, 14, 15, 16, 17, 18, 19, 20, 21, 22, 23, 24, 25, 26, 27, 28, 29, 30, 31, 32, 33, 34, 35, 36, 37, 38, 39, 40, 41, 42, 43, 44, 45, 46, 47, 48, 49, 50, 51, 52, 53, 54, 55, 56, 57, 58, 59, 60, 61, 62, 63

P.I. 134+37.86
Y 662541.54
X 1666263.42
Δ = 34°59'27"
D = 04°30'00"
T = 401.34
L = 777.58
E =
R = 1273.24
P.C. 130+36.52
P.T. 138+14.10

EQUATION 137+32.32 BK. =
138+09.25 AH. =

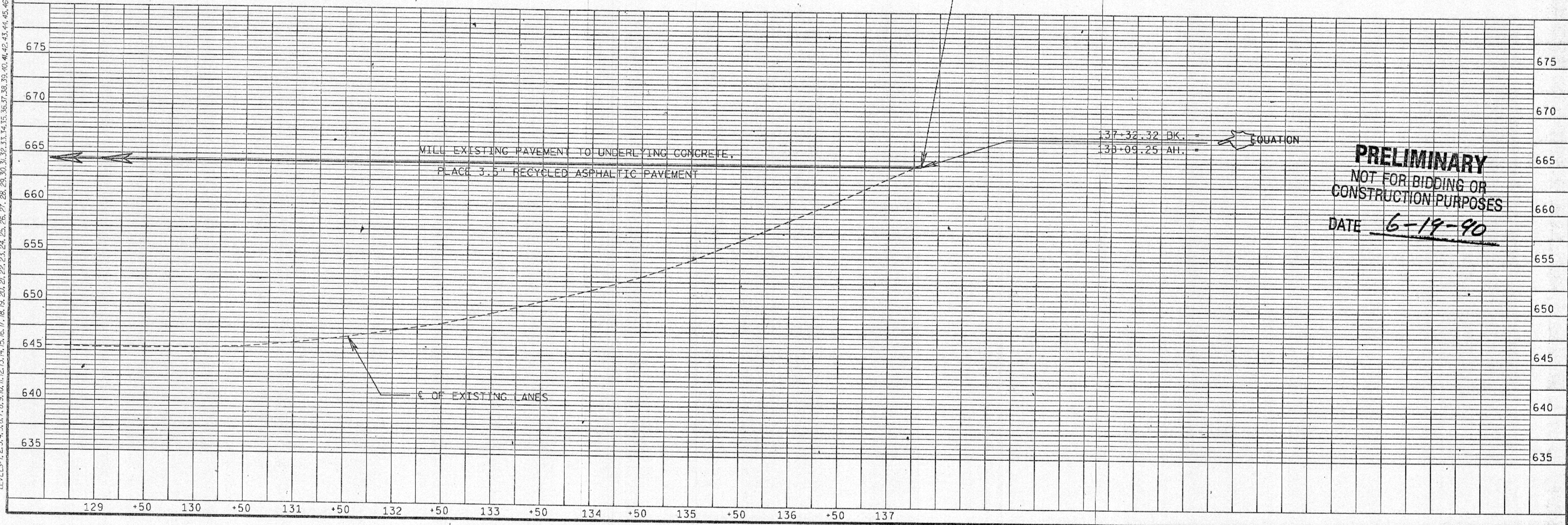


*NOTE: EXISTING CATCH BASINS TO BE ADJUSTED FROM STA. 110+00 TO END OF JOB.

END PROJECT
STA. 137+32.32
Y 662344.949
X 1666515.418

BENCH MARKS			
NO.	STA.	DESCRIPTION	ELEV.
#5	118+10	59' LT. ON S.W. CORNER OF SIGN	649.34'
#6	137+31	23' RT. DISK STAMPED "0124 1970"	665.74'

*EXISTING CATCH BASINS TO BE ADJUSTED FROM STA. 110+00 TO END OF PROJECT



PRELIMINARY
NOT FOR BIDDING OR
CONSTRUCTION PURPOSES
DATE 6-19-90

FILE NAME: 9141006.dgn
PLOT NAME: 9141006.000
PLOT SCALE: 50
REV. DATE: 06-18-90 NJF
ORIGINATOR: CJG

LEVELS: 1, 2, 3, 4, 5, 6, 7, 8, 9, 10, 11, 12, 13, 14, 15, 16, 17, 18, 19, 20, 21, 22, 23, 24, 25, 26, 27, 28, 29, 30, 31, 32, 33, 34, 35, 36, 37, 38, 39, 40, 41, 42, 43, 44, 45, 46, 47, 48, 49, 50, 51, 52, 53, 54, 55, 56, 57, 58, 59, 60, 61, 62, 63