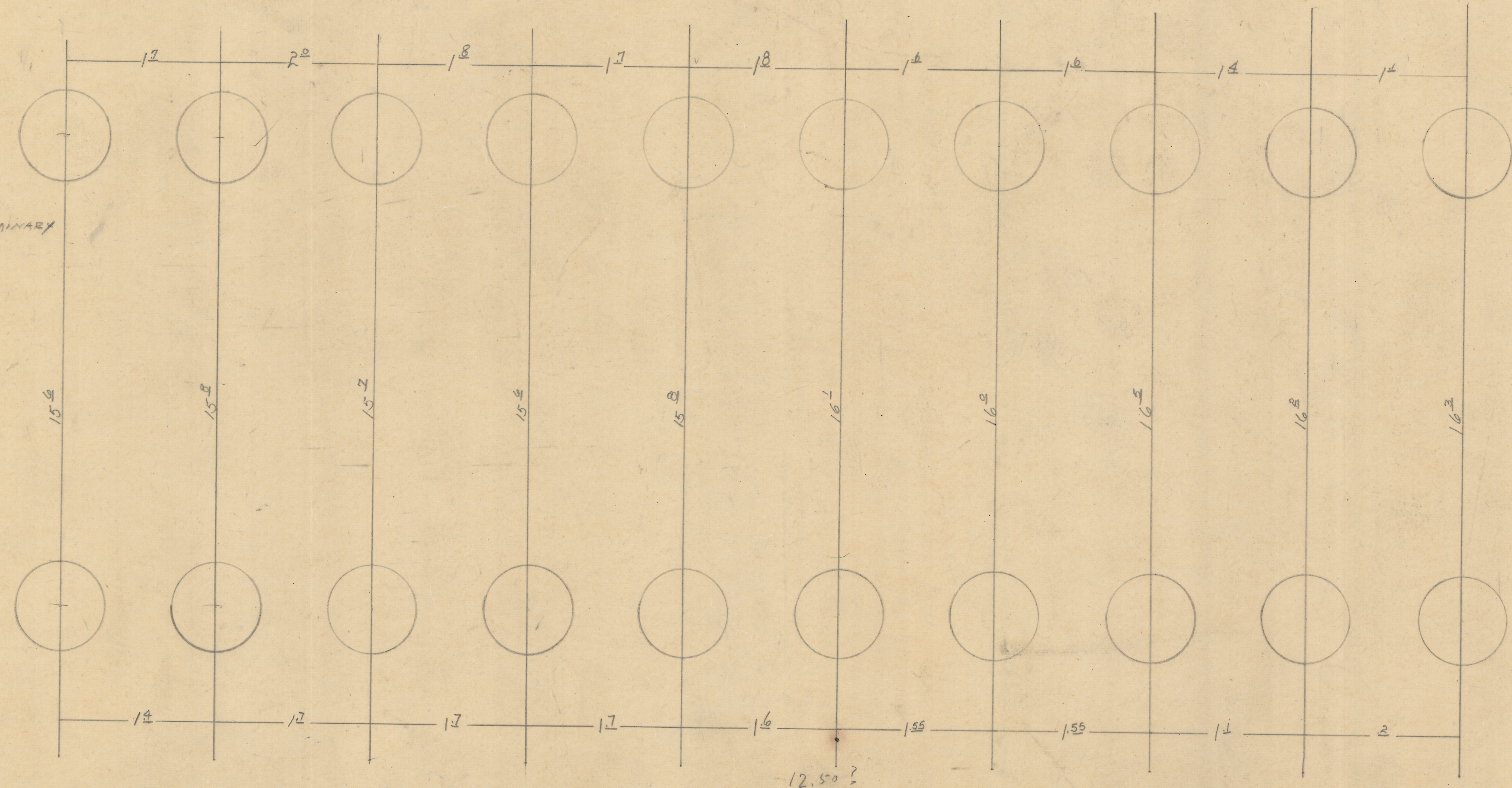


WENZEL ROAD BRIDGE
NORTH OF Co TR "T"
FARMINGTON
Book # 201-8-10-60 PRELIMINARY
OCT.-14-1960 FINAL

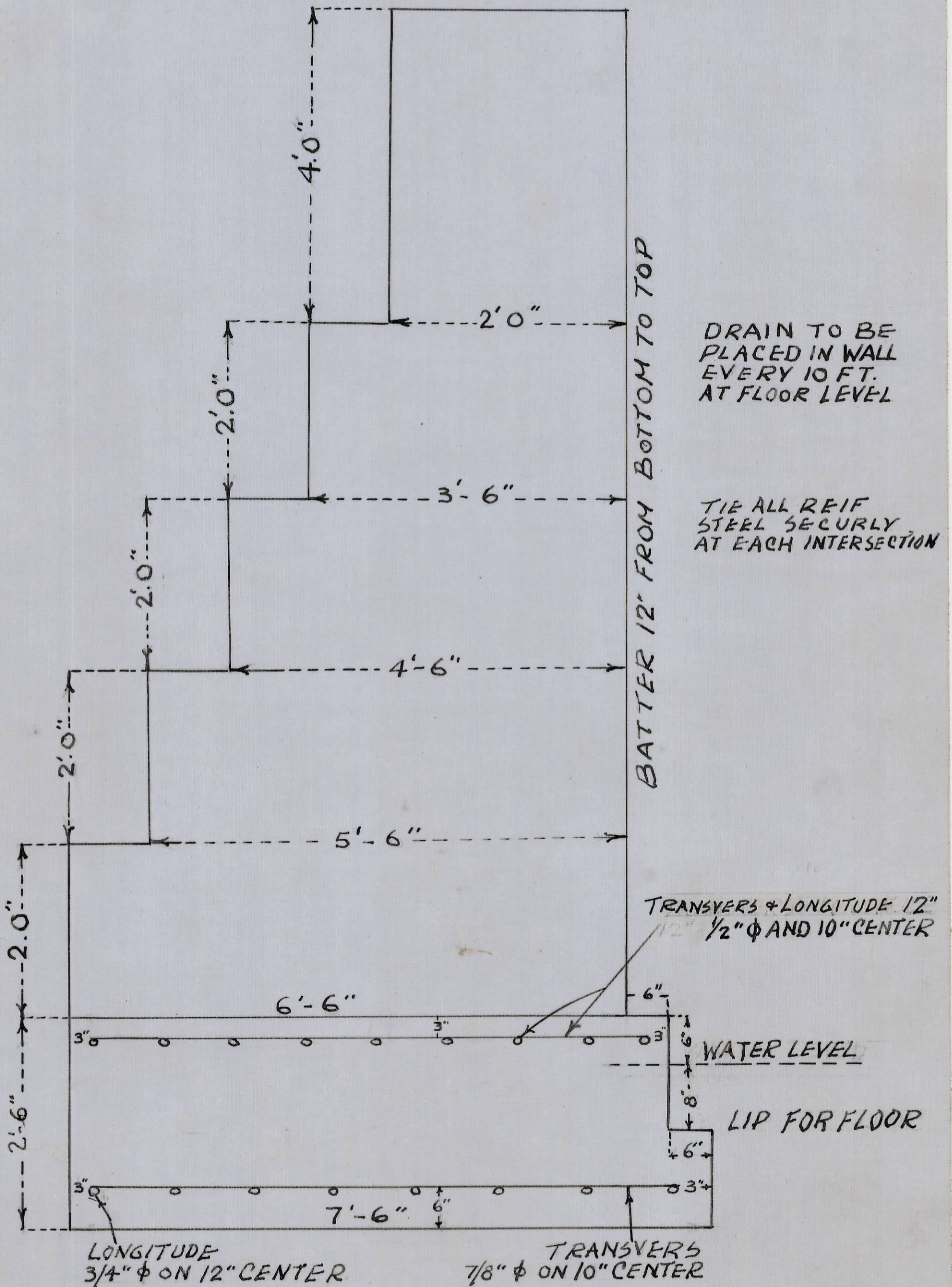
5-I-B² 12" x 3" x 5/16" x 20
2-C³ 12" x 3" x 5/16" x 20
C³ & L³ RAILINGS



PLAN NO. 110

RETAINING WALL AT BR. #28 C.T.H. "D" FARMINGTON

DRAWN 1-15-57
SCALE 1" = 1.5 FT.



DRAIN TO BE PLACED IN WALL EVERY 10 FT. AT FLOOR LEVEL

TIE ALL REIF STEEL SECURLY AT EACH INTERSECTION

TRANSVERSERS & LONGITUDE 12" 1/2" ϕ AND 10" CENTER

WATER LEVEL

LIP FOR FLOOR

LONGITUDE 3/4" ϕ ON 12" CENTER

TRANSVERSERS 7/8" ϕ ON 10" CENTER