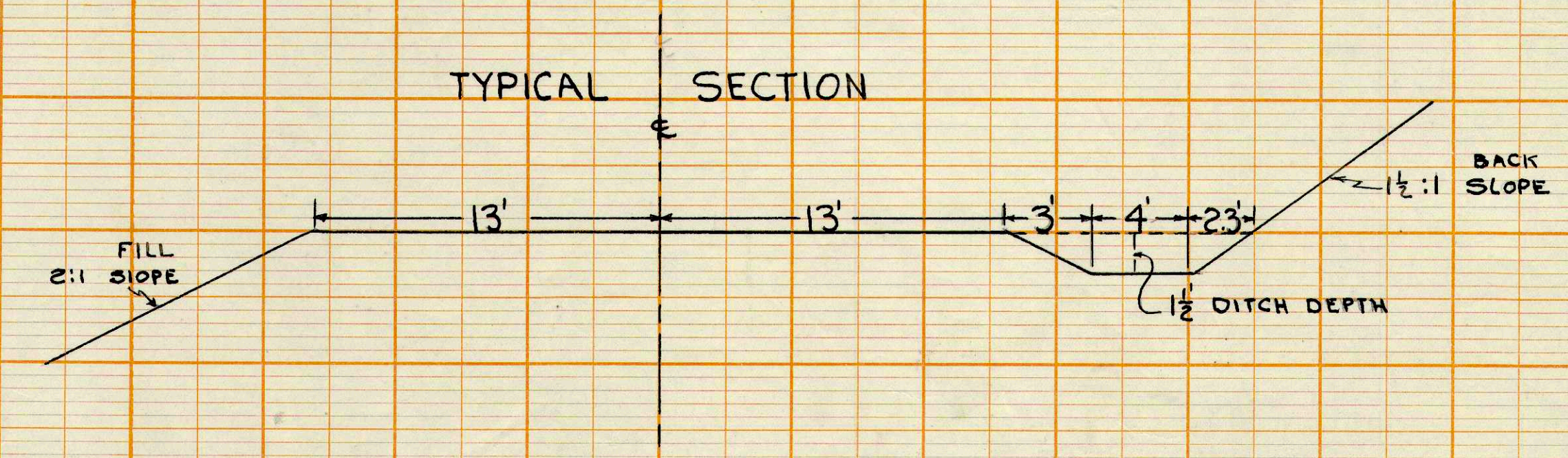
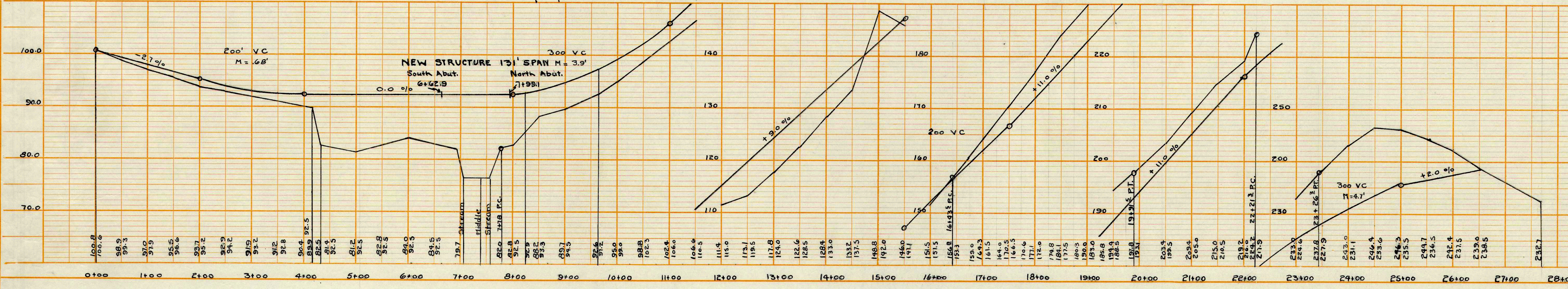
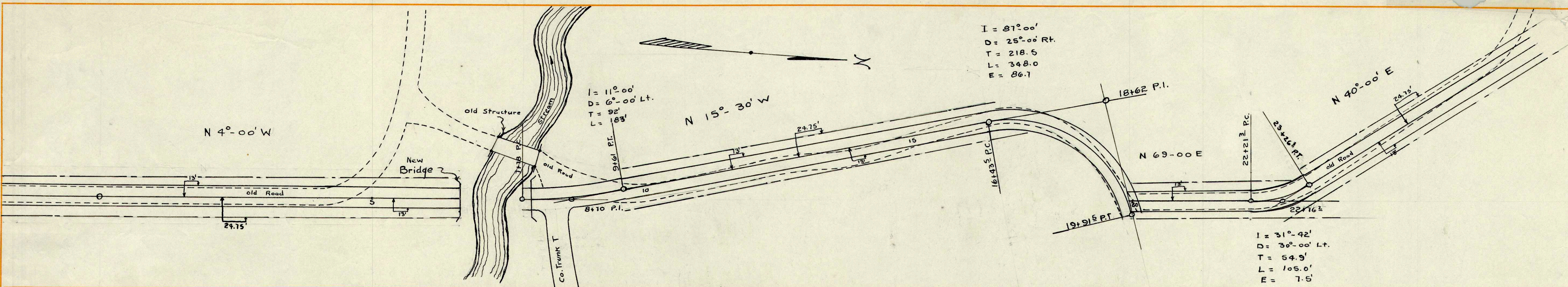


MOBILE BOOK ALUMINUM CHECKED: Paul A. Hartwig
 No. 1 ENCLOSURE NOTATIONS CHECKED: Paul A. Hartwig

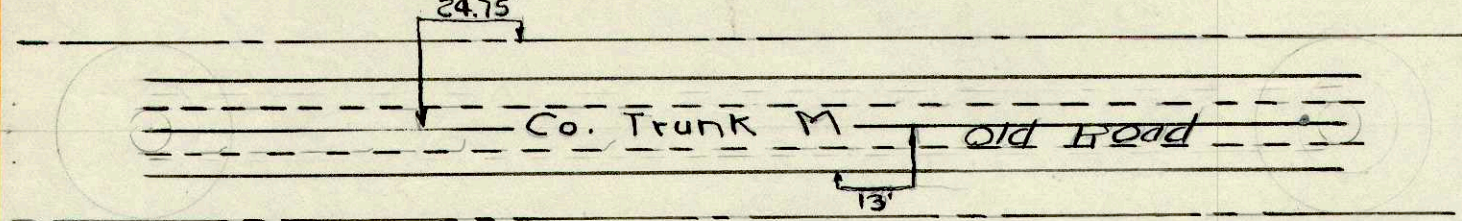
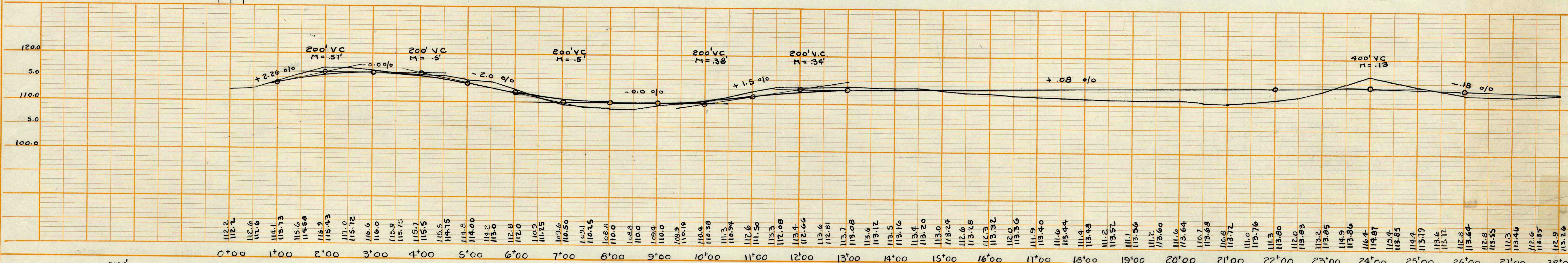
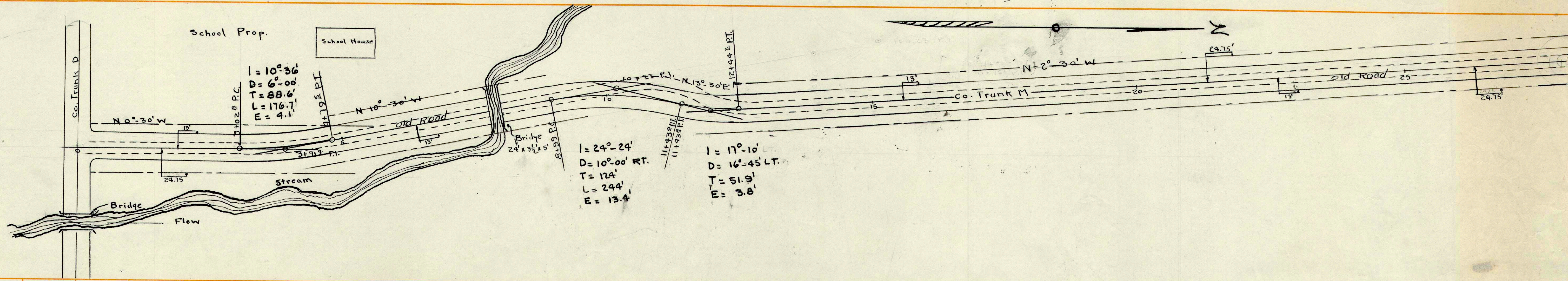


GRADING PLAN
COUNTY TRUNK "M"
 LA CROSSE CO.
 TOWN OF FARMINGTON
 STA 321.81 - 604.81
 Located: Sec. 18, R. 6W, T. 18N
 SCALE: Hor. 1" = 100' Vert. 1" = 10'
 Highway Comm. Project Engr.
 PAULA HARTWIG PAUL HESSELGRAVE

PLAN NO. 71

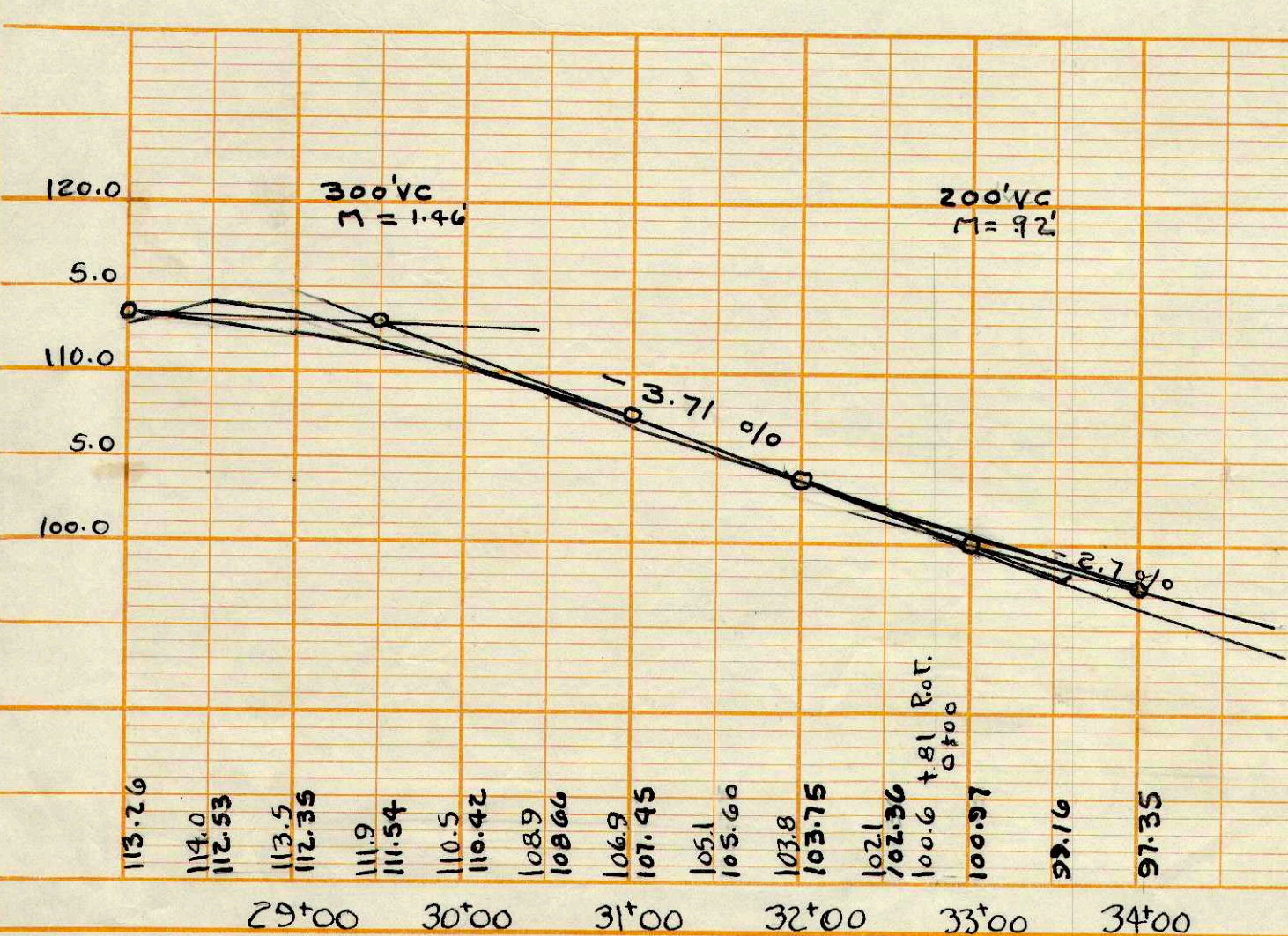
DATE: 4-29-39
 DRAWN BY: Frank Daily
 CHECKED BY: Paul A. Hesselgrave
 DATE: 5-8-39
 ALIGNED CHECKED BY: Paul A. Hartwig
 DATE: 5-9-39
 PLAN
 NOTE BOOK
 No. 1

DATE: 5-1-39
 DRAWN BY: Frank Daily
 CHECKED BY: Paul A. Hesselgrave
 DATE: 5-9-39
 PROFILE
 NOTE BOOK
 No. 1

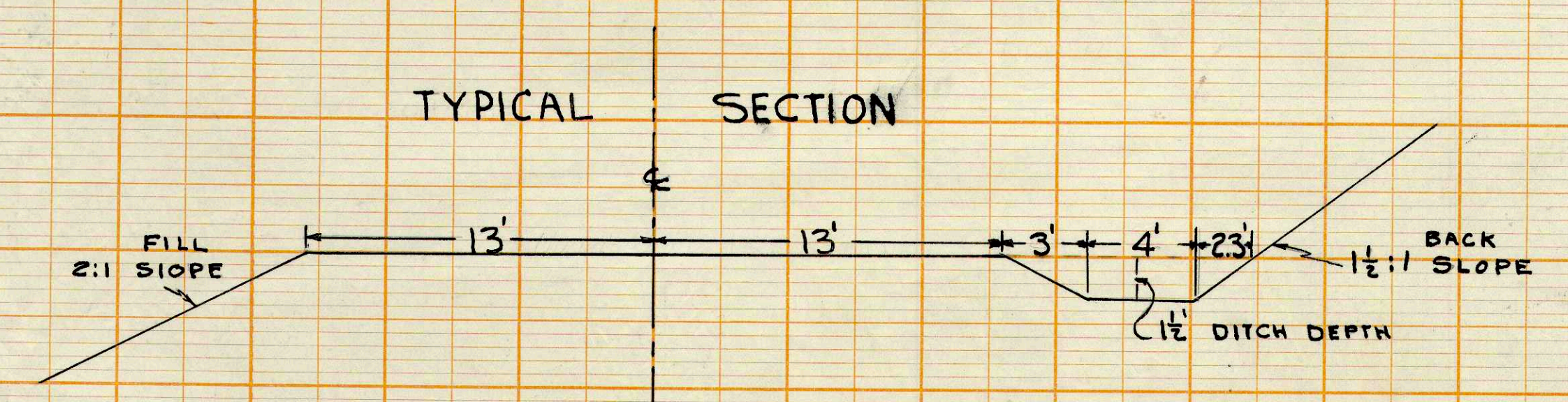


ESTIMATED QUANTITIES

GRADING		BRIDGE	
EARTH EXCAVATION	25,500	C.V.	UNTREATED TIMBER PILING
CLEARING & GRUBBING	250	TREES	CONCRETE MASONRY
18" CULVERT PIPE	200	L.F.	STRUCTURAL STEEL
18" R.F.P.	150	CORD	BAR STEEL (REINF.)
GUARD RAIL (single cable)	5000	L.F.	FLOOR DRAINS
			CAST STEEL
			WELDED JOINTS
			WELT LEAD
			ZINC PLATES



32+81 = 0+00 on Plan No. 1
 0+00 = 27+70 Under Construction
 27+70 = 60+81



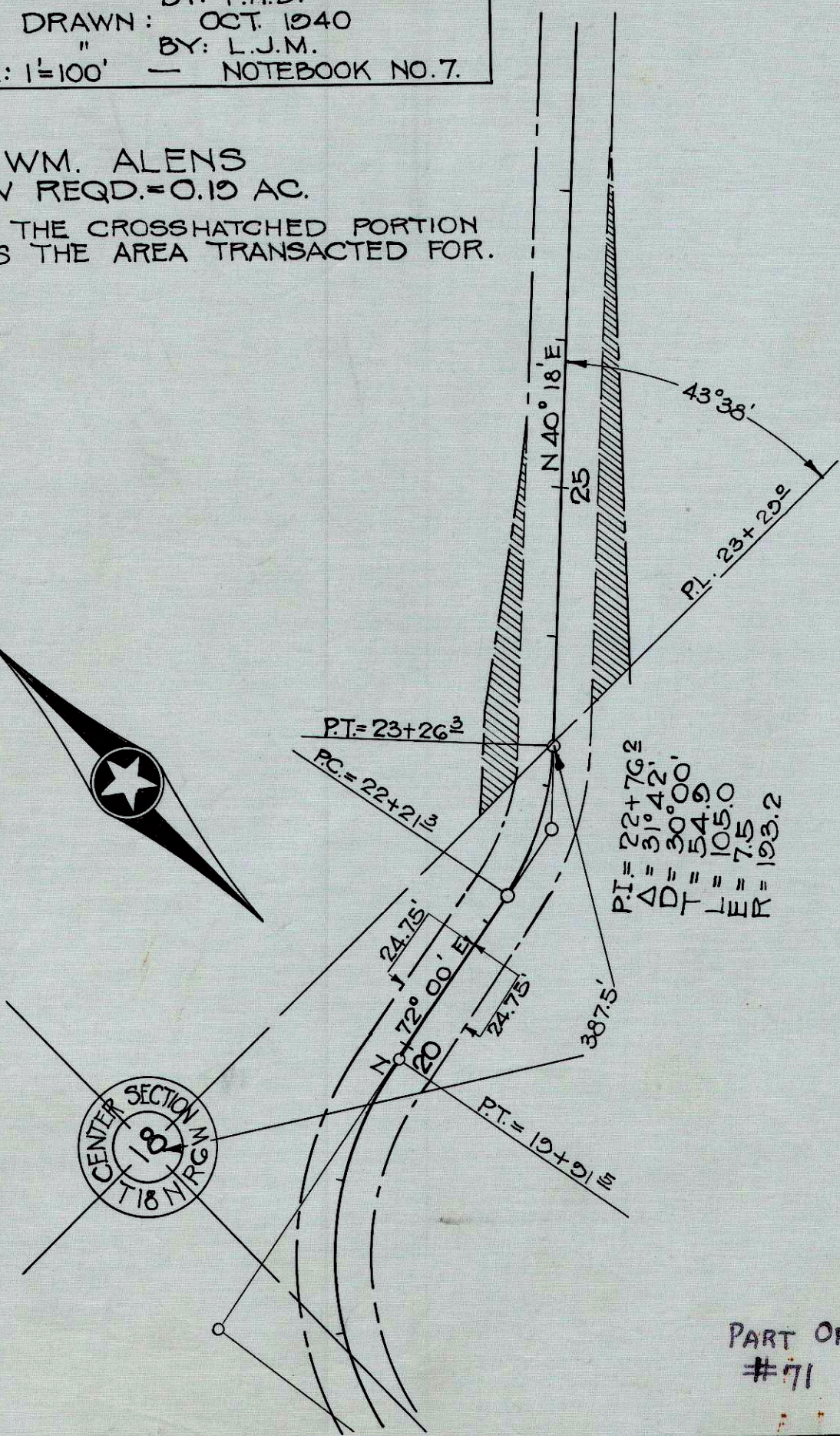
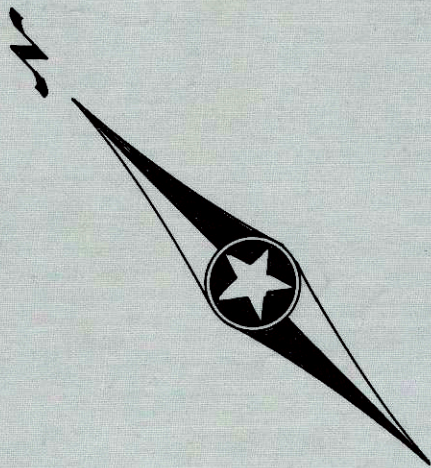
PLAN OF COUNTY TRUNK "M"
 TOWN OF FARMINGTON
 Sta. 0+00 - 32+81
 LA CROSSE COUNTY
 LOCATION: Section 19+18, T.18N., R. 7W. Beginning at Intersection of Co. Trunks D+M, thence North.
 SCALE: Hor. 1"=100'; Vert. 1"=10'
 Co. Highway Comm. DRAWN BY
 PAUL A. HARTWIG PAUL HESSELGRAVE

Plan 71

LA CROSSE CO. HIGHWAY DEPT.
 TOWN OF FARMINGTON
 C.T.H. "M"
 SURVEYED: JAN. 1939
 " BY: F.N.D.
 DRAWN: OCT. 1940
 " BY: L.J.M.
 SCALE: 1"=100' — NOTEBOOK NO.7.

WM. ALENS
 R/W REQD.=0.19 AC.

NOTE: THE CROSSHATCHED PORTION
 SHOWS THE AREA TRANSACTED FOR.



PART OF
 #71