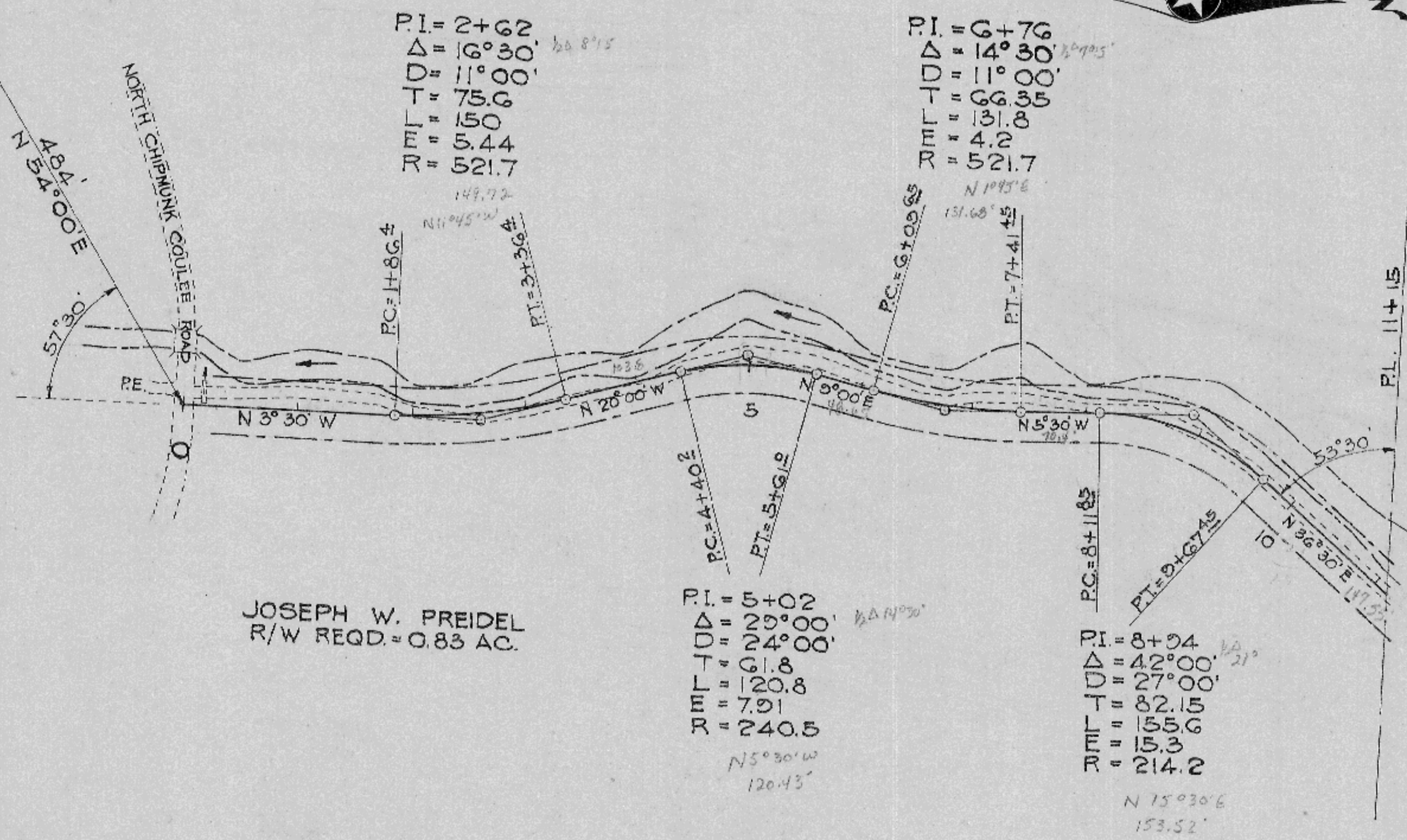




TOWN OF SHELBY  
TOWN OF GREENFIELD

LA CROSSE COUNTY  
VERNON COUNTY



JOSEPH W. PREIDEL  
R/W REQD. = 0.83 AC.

WM. HEIKEL

4/12/06  
(No deed)  
WJG

LA CROSSE COUNTY HIGHWAY DEPARTMENT

PAUL A. HARTWIG — COUNTY HIGHWAY COMMISSIONER.

ROAD — HEIKEL ROAD  
SURVEYED BY: FND.  
DRAWN BY: R.J.O.  
CHECKED BY: P.A.H.  
APPROVED BY: *[Signature]*

TOWN — GREENFIELD  
DATE — OCT 1940  
DATE — OCT 1940  
DATE — 10-26-40  
DATE — 10-26-40

PLAN NO. 115/15

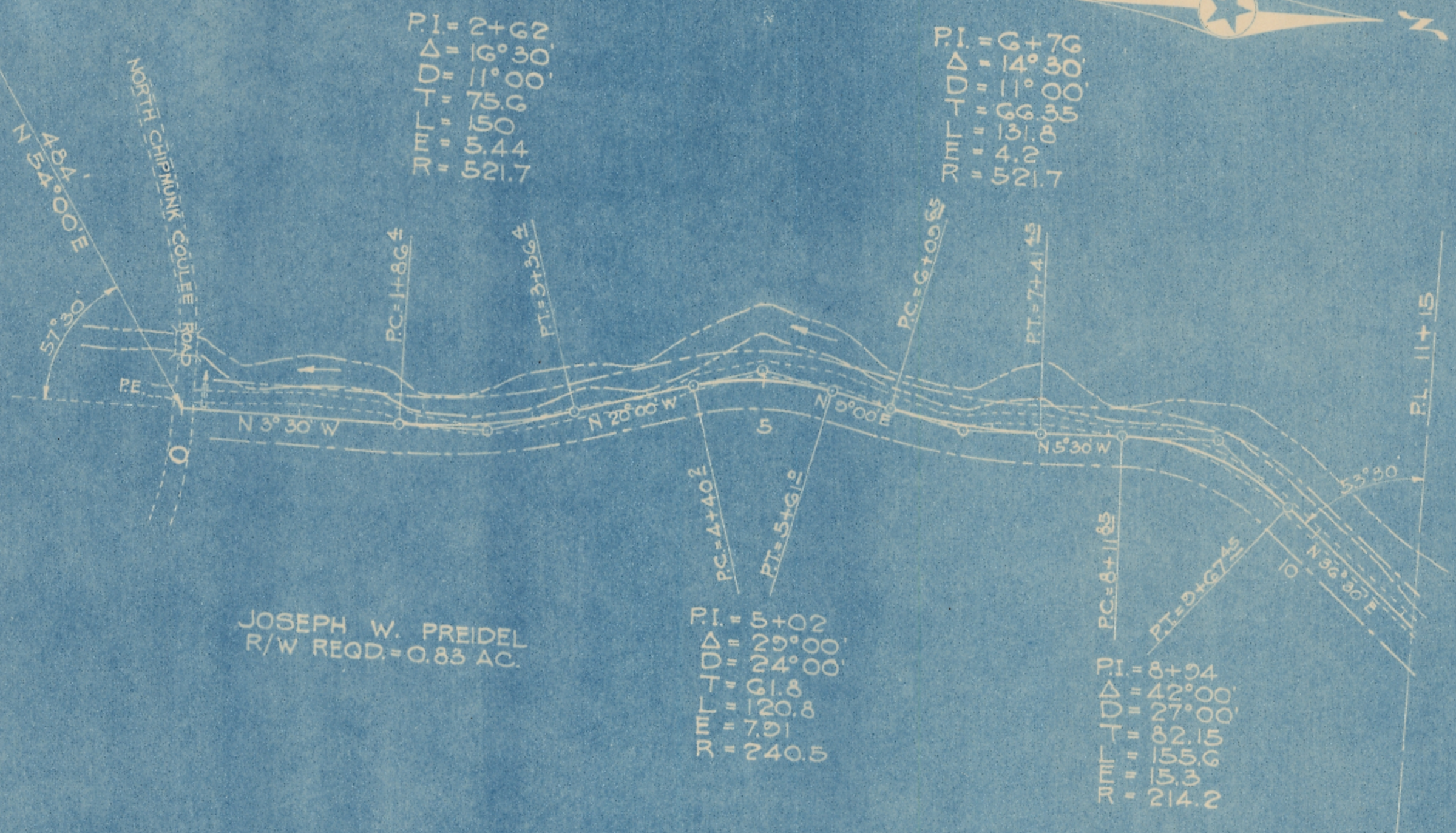
DATE	
BY	
SCALE	
PROJECT	
NO.	

DATE	
BY	
SCALE	
PROJECT	
NO.	



LA CROSSE COUNTY  
VERNON COUNTY

TOWN OF SHELBY  
TOWN OF GREENFIELD



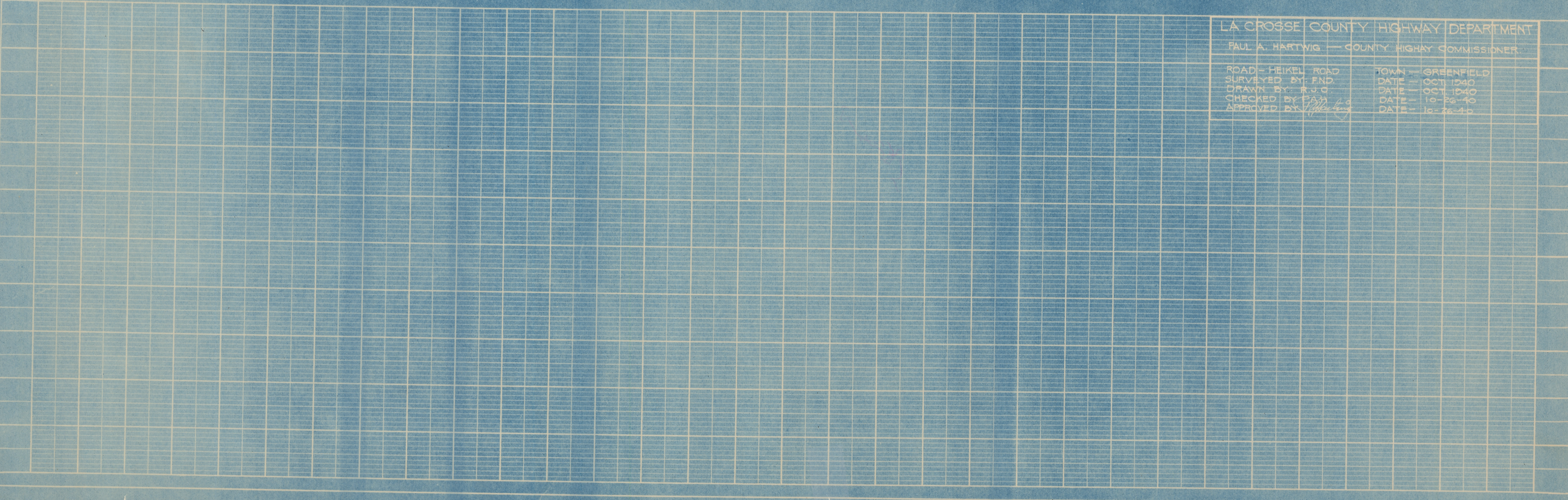
PI = 2+62  
Δ = 16° 30'  
D = 75.00  
T = 59.44  
L = 521.7

PI = 6  
Δ = 14° 00'  
D = 66.00  
T = 43.00  
L = 210.00

PI = 5+02  
Δ = 29° 00'  
D = 61.8  
T = 79.8  
L = 240.5

PI = 8+04  
Δ = 42° 00'  
D = 27.00  
T = 82.15  
L = 155.9

PC = 6+10.85  
PT = 7+4.45  
P.L. 11+15



LA CROSSE COUNTY HIGHWAY DEPARTMENT  
 PAUL A. HARTWIG — COUNTY HIGHWAY COMMISSIONER

ROAD — HEIKEL ROAD	TOWN — GREENFIELD
SURVEYED BY: FND	DATE — OCT 1940
DRAWN BY: R.J.O.	DATE — OCT 1940
CHECKED BY: F.A.H.	DATE — 10-26-40
APPROVED BY: <i>[Signature]</i>	DATE — 10-26-40

DATE	
BY	
SCALE	
PROJECT	
NO.	

DATE	
BY	
SCALE	
PROJECT	
NO.	