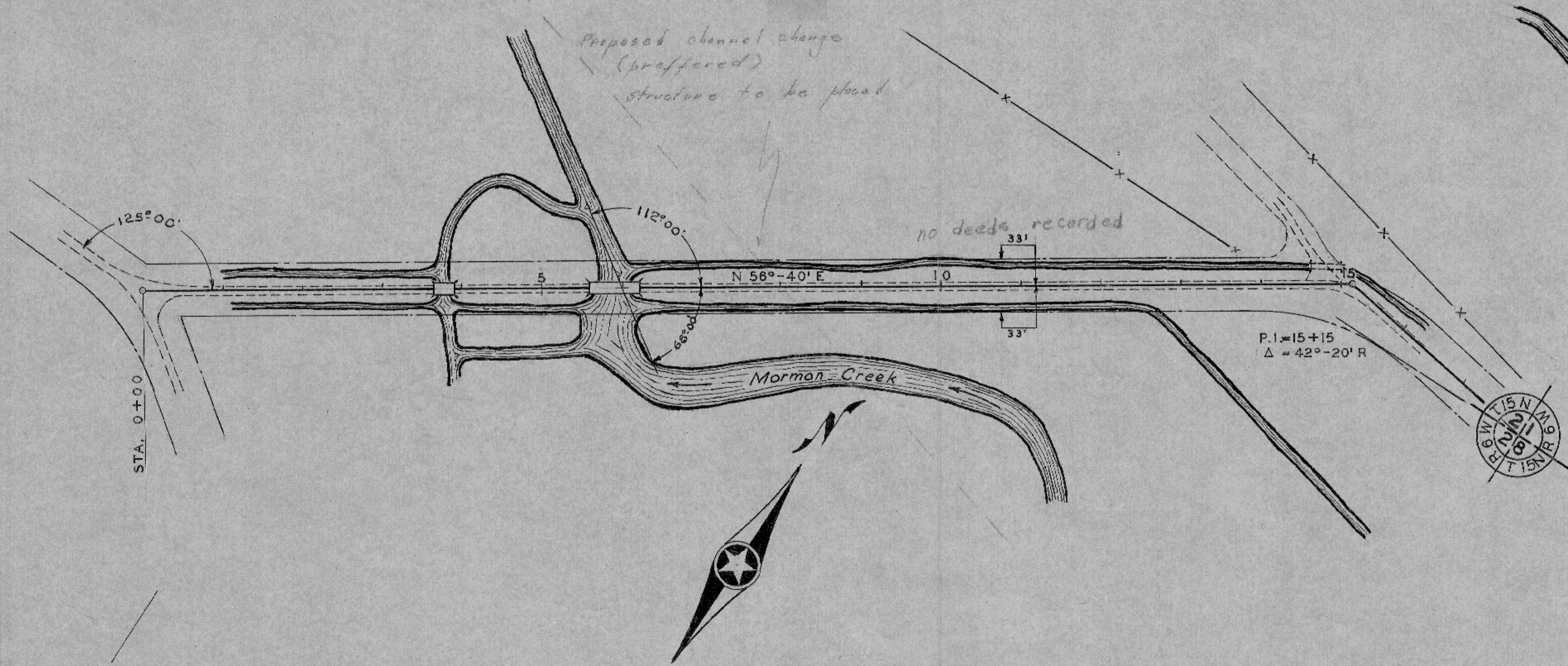
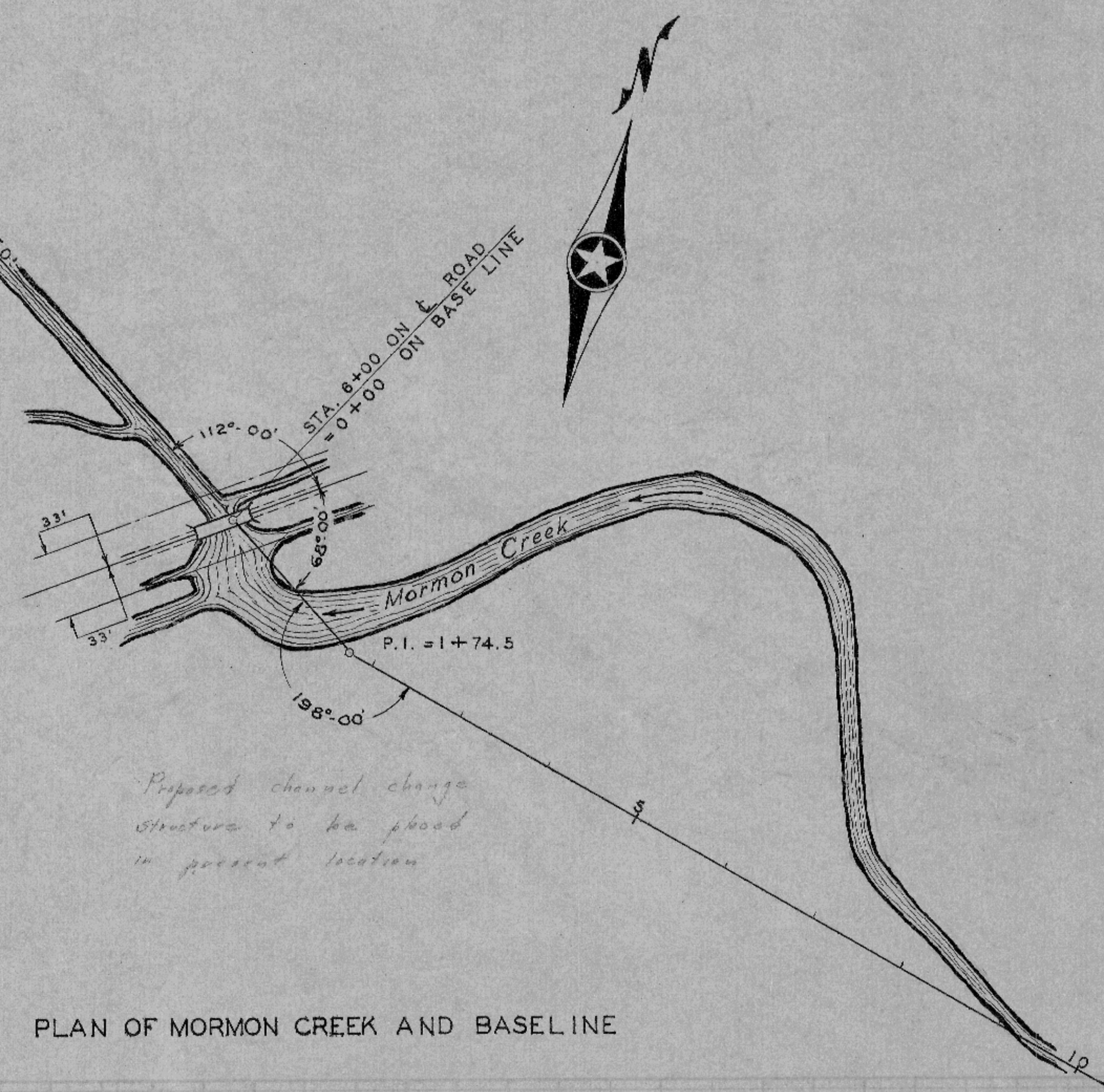


F.N.D. 3-11-46
3-18-46

100



PLAN OF SCHMALTZ ROAD



PLAN OF MORMON CREEK AND BASELINE

STA. -4	AVERAGE BLOWS PER FT.	STA. -2	AVERAGE BLOWS PER FT.
6 1/2'	PUSH	6 1/2'	PUSH
6 1/2' - 13'	5	6 1/2' - 15'	9
13' - 19'	14	15' - 16'	19

STA. 3	AVERAGE BLOWS PER FT.	STA. -1	AVERAGE BLOWS PER FT.
5'	PUSH	4'	PUSH
5' - 12'	4	4' - 8'	3
12' - 18 1/2'	17	8' - 10'	6
		10' - 18'	10

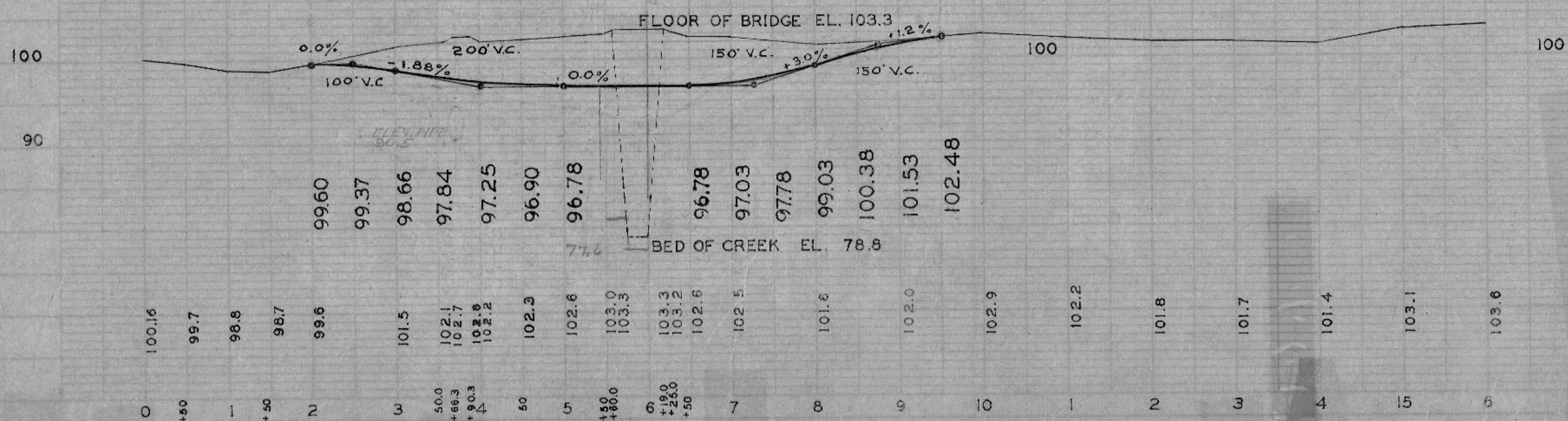
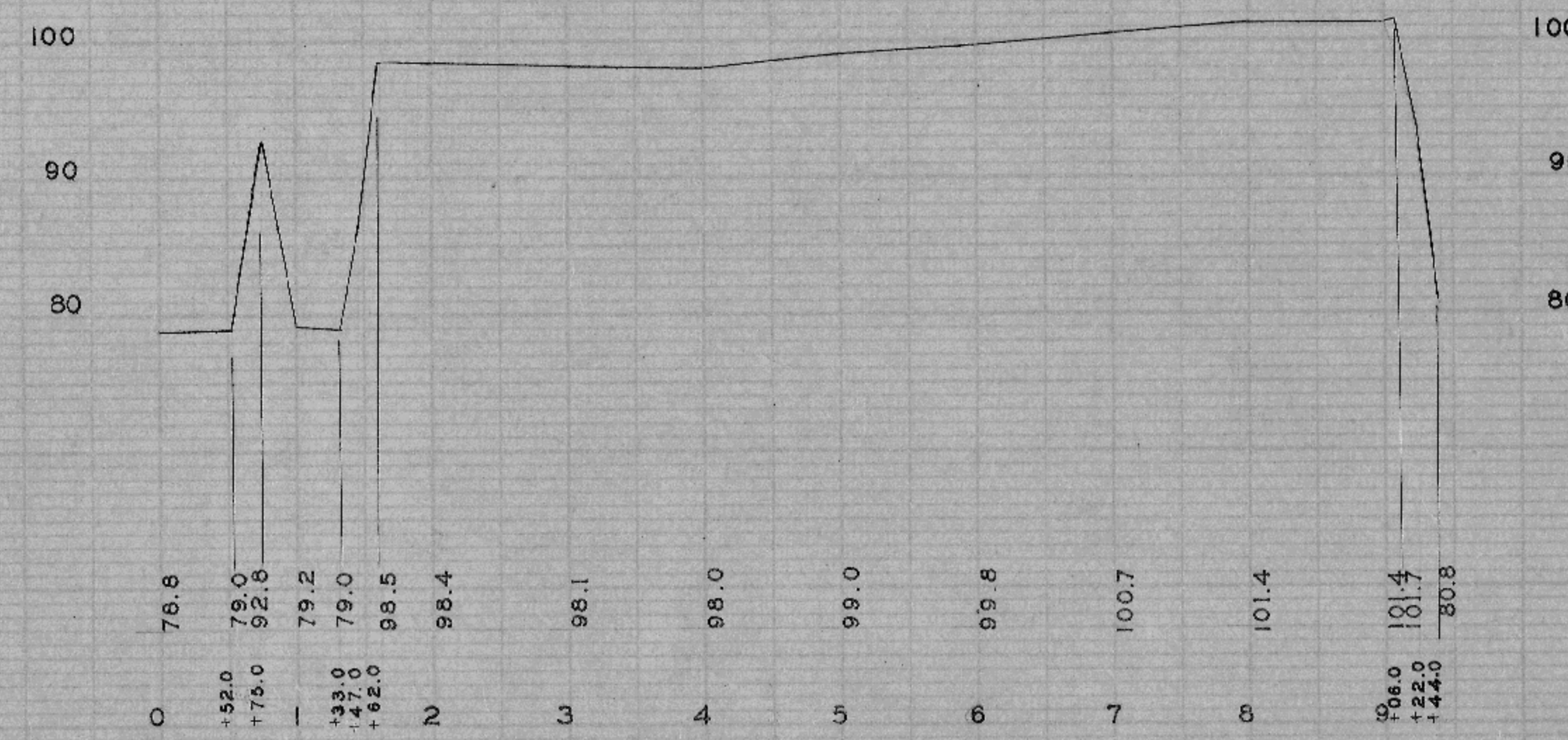
BRIDGE - 30' MAIN SPAN
2 - 15' APRONS - TOTAL 60' X 15'
IN PLACE

DATE 9-10-46
HIGH WATER MARK
100' ABOVE ROAD 89.03
150' BELOW ROAD 85.03

B.M. ELEV. 99.37
SPIKE IN 14" BOX ELDER
47' RIGHT OF STA. 4+95

NEW BRIDGE
STA. 5+42 - 6+00
ELEV. BRIDGE FLOOR 96.78

FLOOR OF BRIDGE EL. 103.3



TOWN OF GREENFIELD

SCHMALTZ ROAD AND BRIDGE LAYOUT

LA CROSSE COUNTY HIGHWAY DEPARTMENT

SHEET No. 1 of

PLAN NO. 121