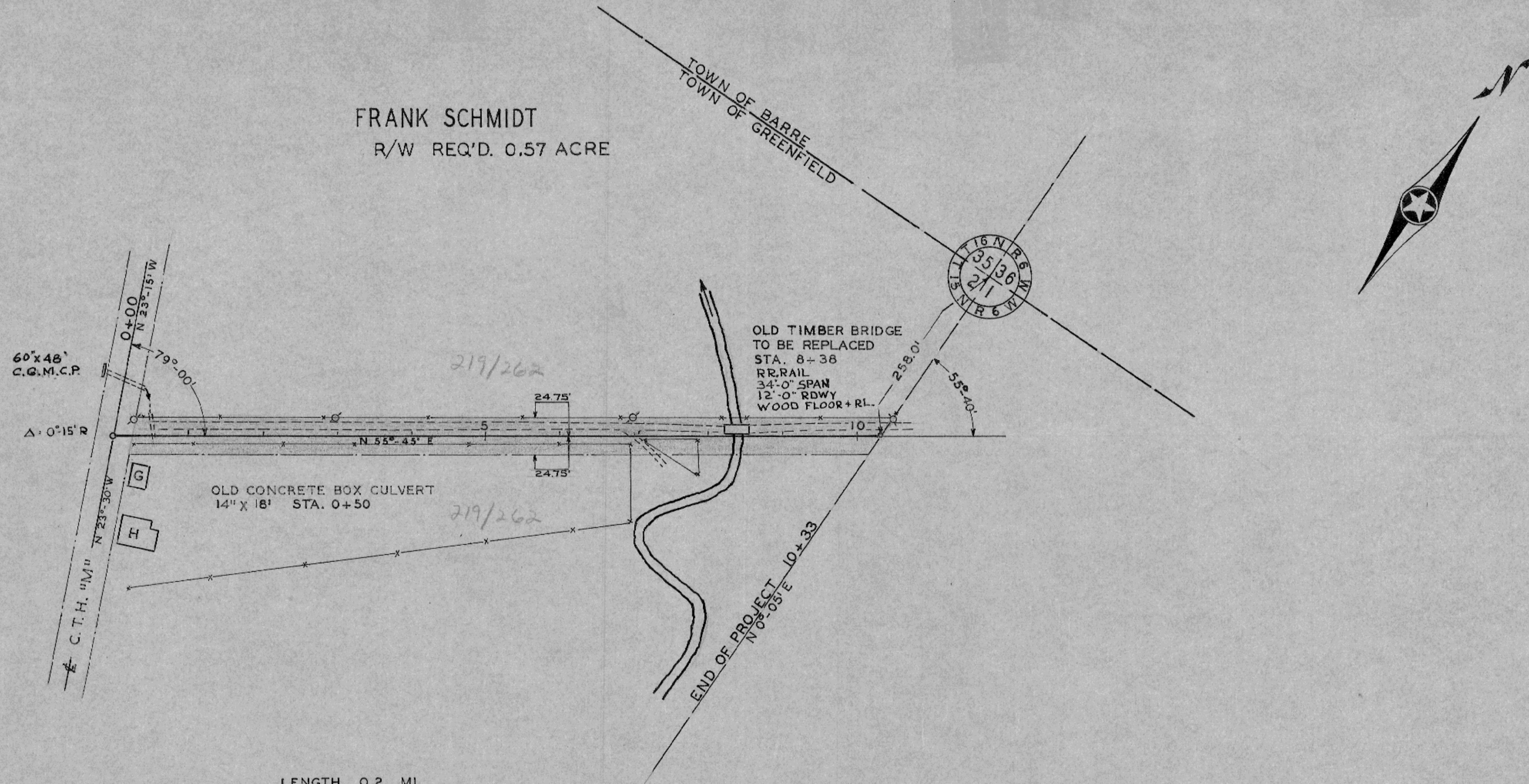


FRANK SCHMIDT
R/W REQ'D. 0.57 ACRE



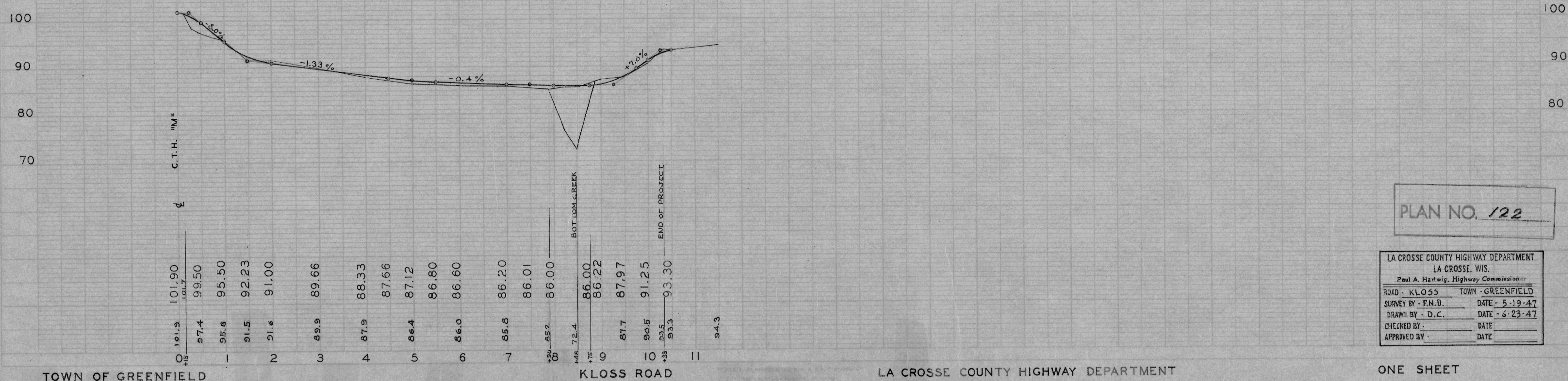
LENGTH 0.2 MI.

BM. ELEV. 100.00
SPIKE IN POWER POLE
25' LEFT STA. 0+22

BM. ELEV. 86.37
SPIKE IN POWER POLE
25' LEFT STA. 7+00

BM. ELEV. 93.86
SPIKE IN POWER POLE
25' LEFT STA. 10+33

STA. 8+38
NEW BRIDGE - CREOSOTE TIMBER
30' SPAN - 16' ROADWAY
ELEV. 86.0



PLAN NO. 122

LA CROSSE COUNTY HIGHWAY DEPARTMENT
LA CROSSE, WIS.
Paul A. Hartwig, Highway Commissioner
ROAD - KLOSS TOWN - GREENFIELD
SURVEY BY - F.N.D. DATE - 5-19-47
DRAWN BY - D.C. DATE - 6-23-47
CHECKED BY - DATE
APPROVED BY - DATE

PLAN NO. 36
F.N.D. 5-19-47
D.C. 6-23-47

PROFILE NO. 36
F.N.D. 5-19-47
D.C. 6-23-47