

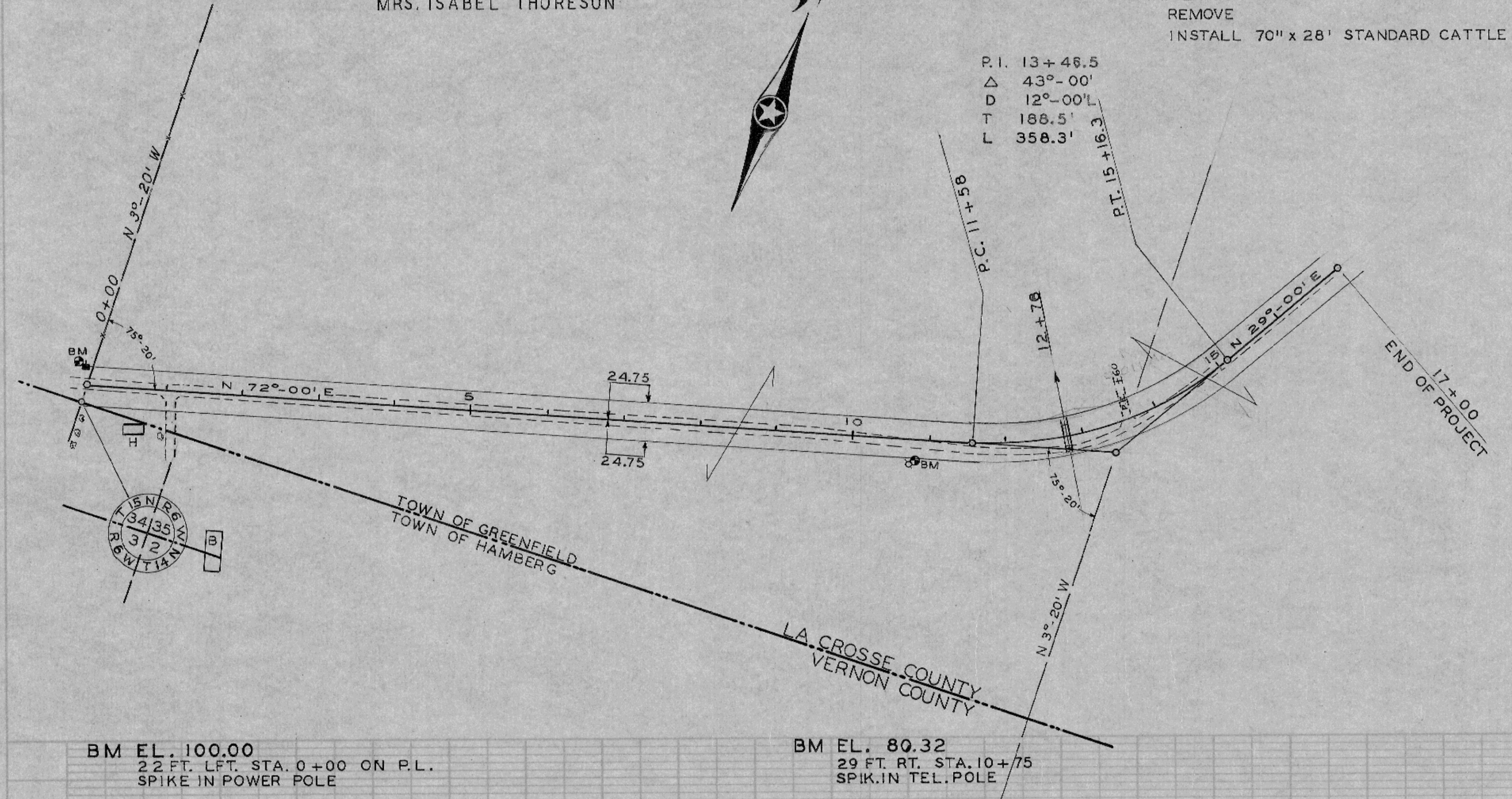
PLAN  
 F.N.D.  
 5-17-49  
 5-21-49  
 NOTE BOOK ALPHABETIC CONTROL  
 NO. 100

PROFILE  
 F.N.D.  
 D.C.  
 5-17-49  
 5-24-49  
 NOTE BOOK ALPHABETIC CONTROL  
 NO. 101

MRS. ISABEL THORESON

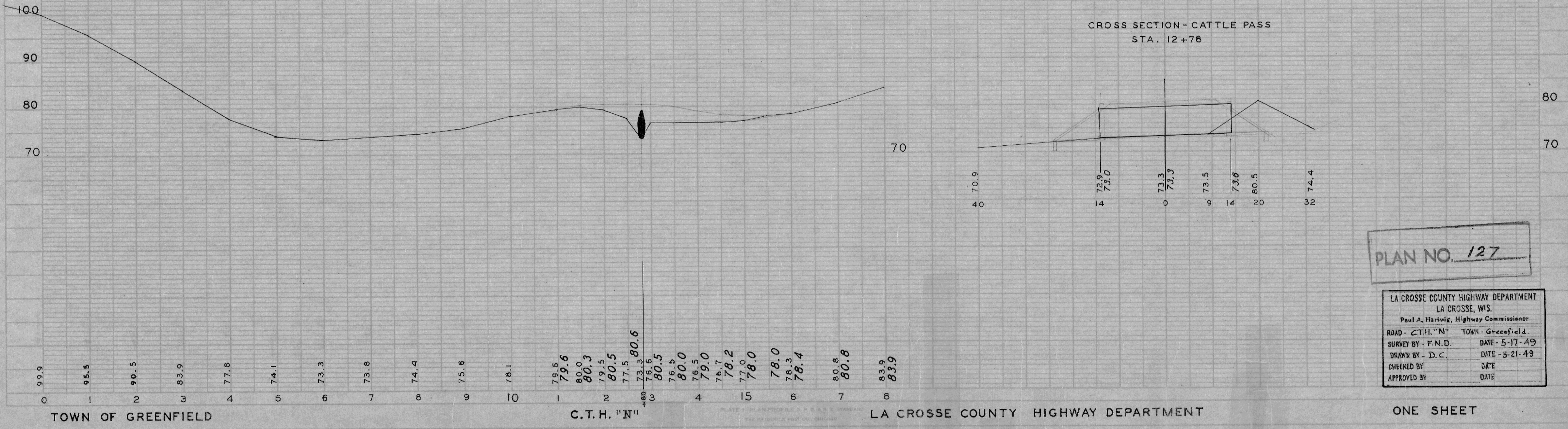
STA. 12+78 INP. OLD CATTLE PASS  
 REMOVE  
 INSTALL 70" x 28' STANDARD CATTLE PASS

P.I. 13+46.5  
 Δ 43°-00'  
 D 12°-00'  
 T 188.5'  
 L 358.3'



BM EL. 100.00  
 22 FT. LFT. STA. 0+00 ON P.L.  
 SPIKE IN POWER POLE

BM EL. 80.32  
 29 FT. RT. STA. 10+75  
 SPIKE IN TEL. POLE



PLAN NO. 127

LA CROSSE COUNTY HIGHWAY DEPARTMENT  
 LA CROSSE, WIS.  
 Paul A. Hartwig, Highway Commissioner  
 ROAD - C.T.H. "N" TOWN - Greenfield.  
 SURVEY BY - F.N.D. DATE - 5-17-49  
 DRAWN BY - D.C. DATE - 5-21-49  
 CHECKED BY - DATE  
 APPROVED BY - DATE