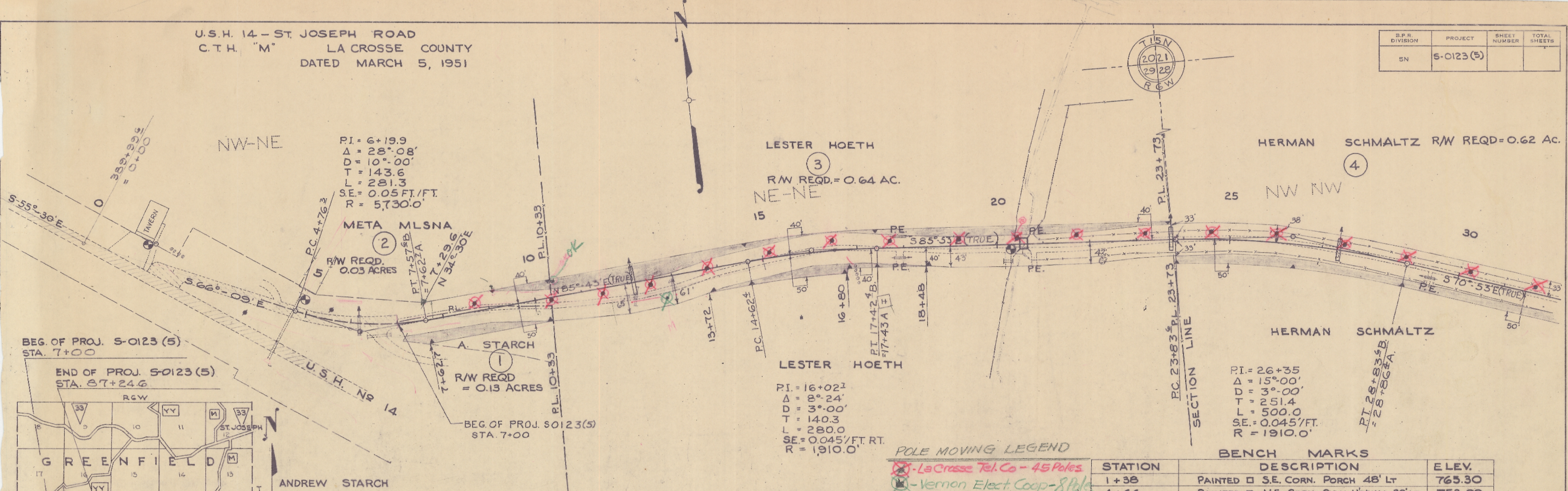
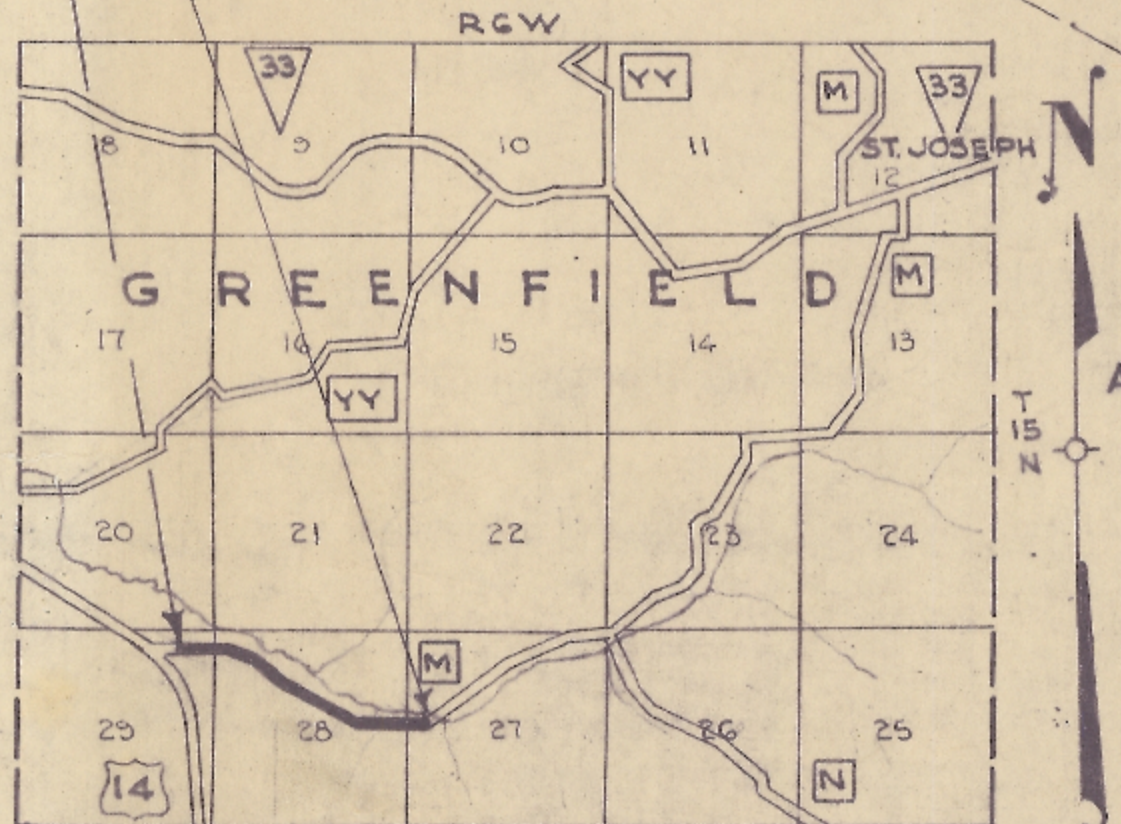


U.S.H. 14 - ST. JOSEPH ROAD
 C.T.H. "M" LA CROSSE COUNTY
 DATED MARCH 5, 1951

B.P.R. DIVISION	PROJECT	SHEET NUMBER	TOTAL SHEETS
5N	5-0123(5)		



BEG. OF PROJ. 5-0123(5)
 STA. 7+00
 END OF PROJ. 5-0123(5)
 STA. 27+24.6



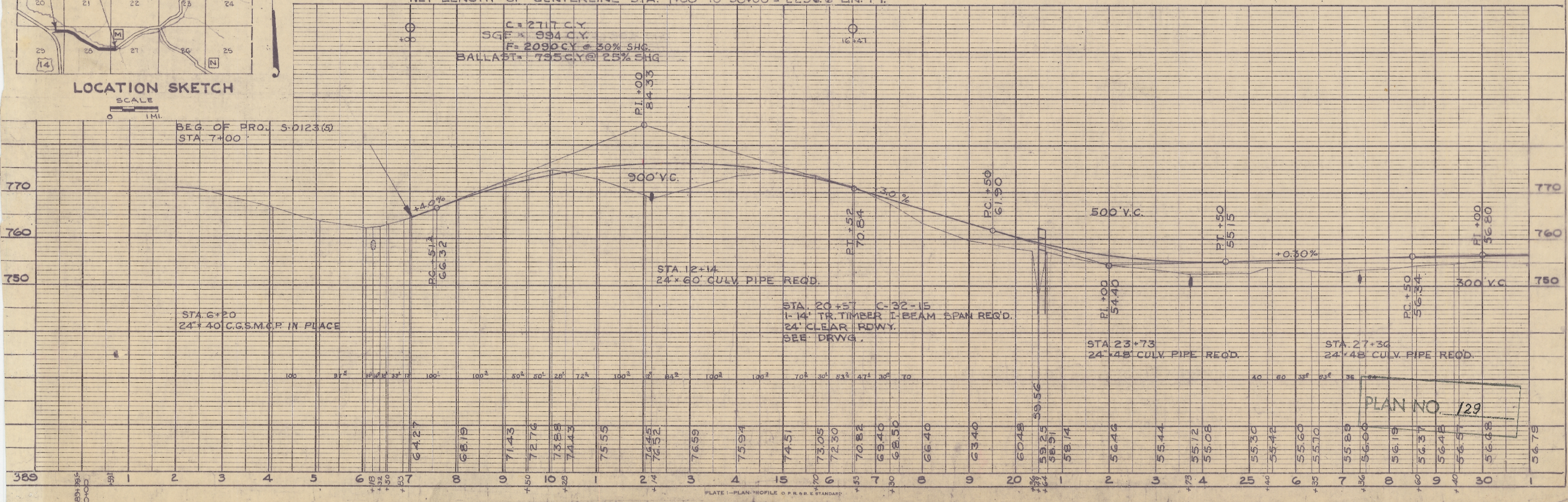
LOCATION SKETCH
 SCALE 1 MI.

NET LENGTH OF CENTERLINE STA. 7+00 TO 30+00 = 2296.6 LIN. FT.

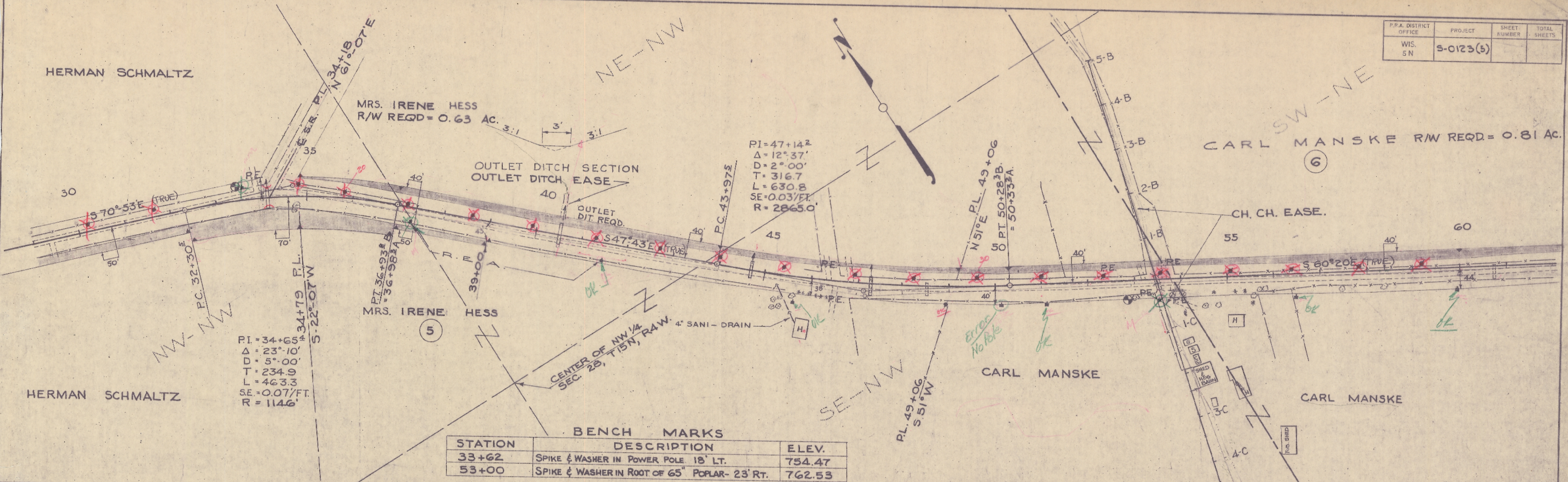
C = 2717 C.Y.
 SGF = 994 C.Y.
 F = 2090 C.Y. @ 30% SHG.
 BALLAST = 735 C.Y. @ 25% SHG.

POLE MOVING LEGEND
 X - LaCrosse Tel. Co - 45 Poles
 O - Vernon Elect. Coop - 8 Poles

STATION	DESCRIPTION	ELEV.
1+38	PAINTED □ S.E. CORN. PORCH 48' LT	765.30
4+66	PAINTED □ N.E. CORN. CULV. HWALL 39' LT.	752.99
20+42	PAINTED □ ON WINGWALL 2' RT. OF T	758.75

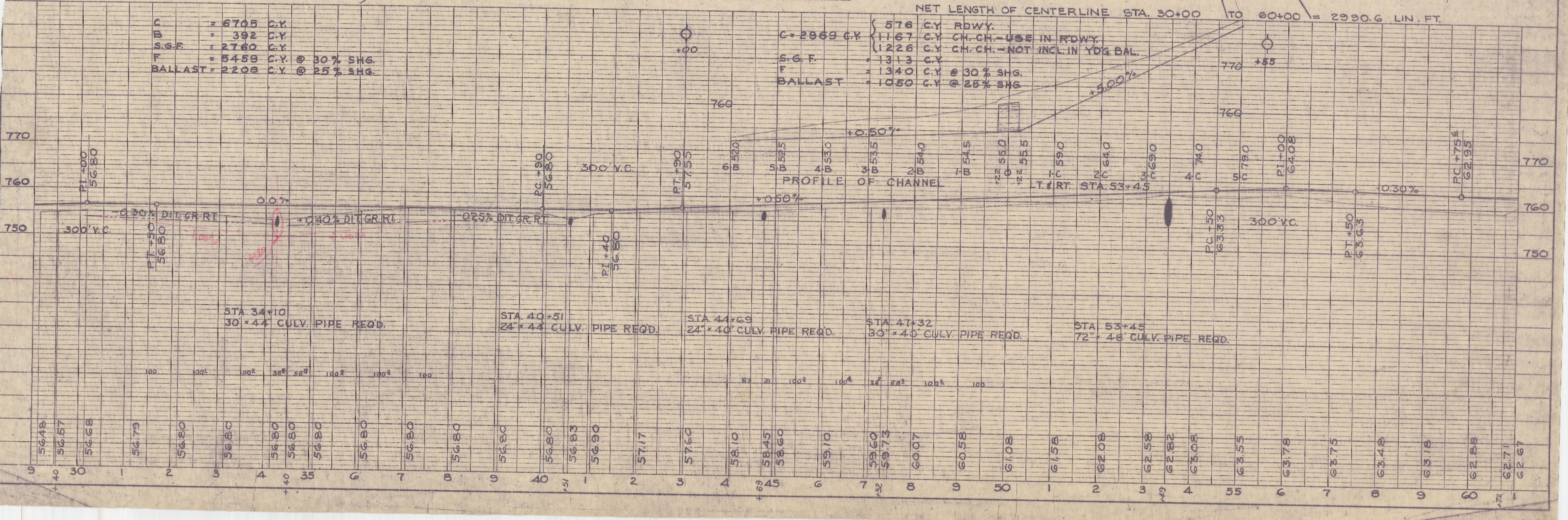


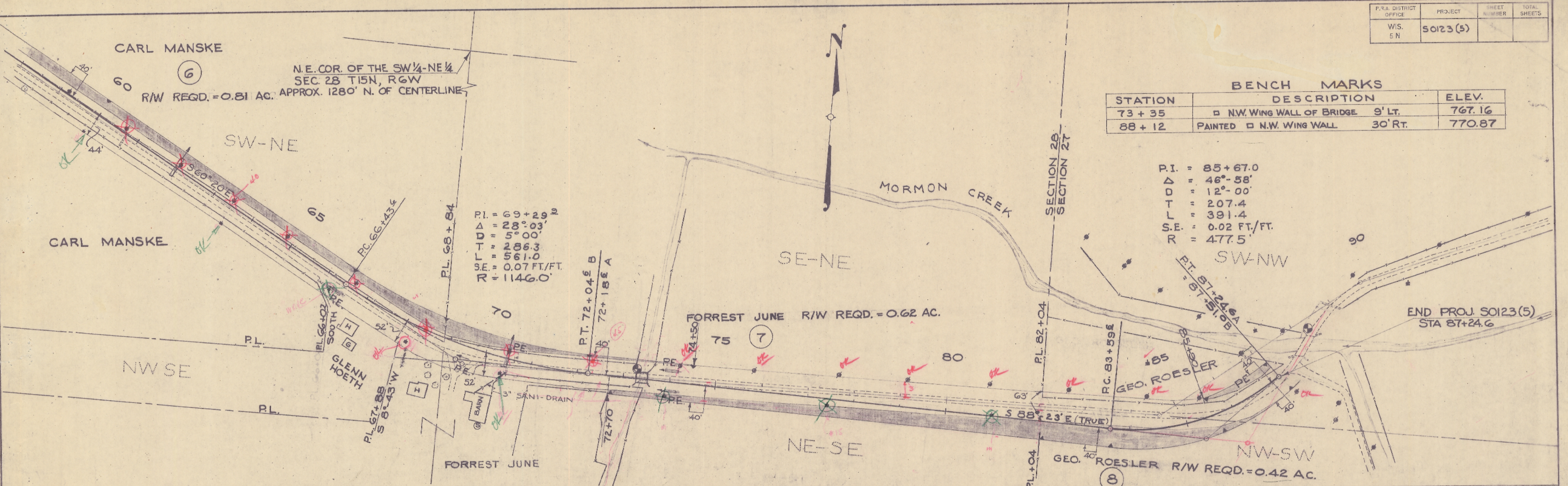
PLAN NO. 129



BENCH MARKS

STATION	DESCRIPTION	ELEV.
33+62	SPIKE & WASHER IN POWER POLE 18' LT.	754.47
53+00	SPIKE & WASHER IN ROOT OF 65' POPLAR- 23' RT.	762.53

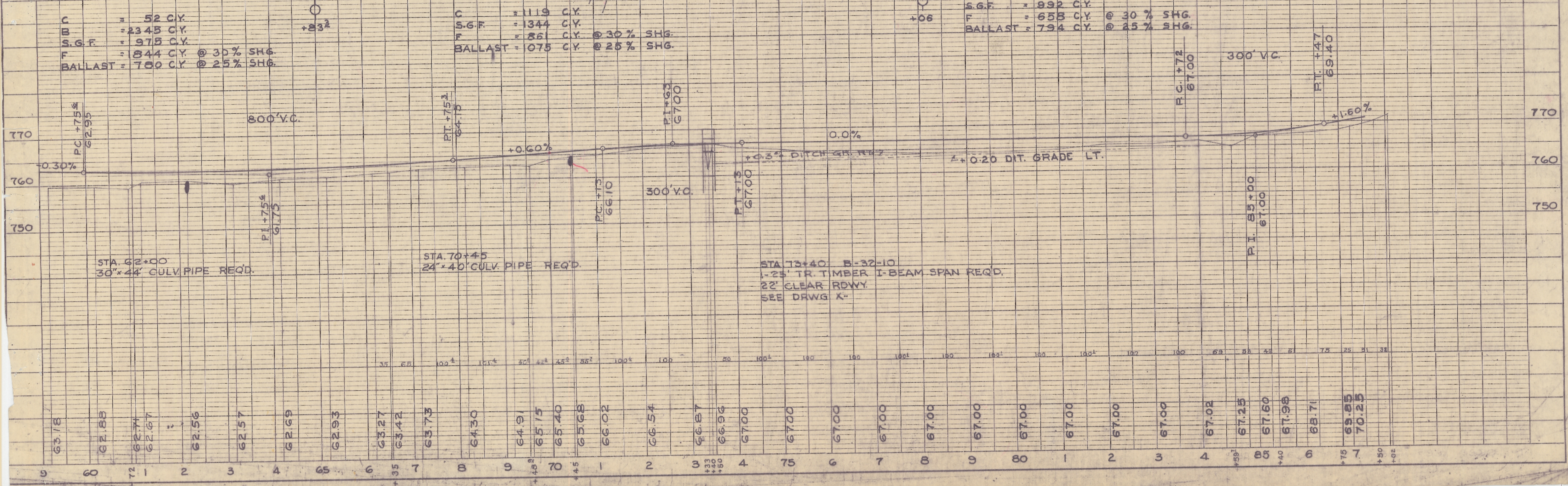




BENCH MARKS			
STATION	DESCRIPTION		ELEV.
73 + 35	□ NW. WING WALL OF BRIDGE	9' LT.	767.16
88 + 12	PAINTED □ NW. WING WALL	30' RT.	770.87

P.I. = 85+67.0
 Δ = 46°-58'
 D = 12°-00'
 T = 207.4
 L = 391.4
 S.E. = 0.02 FT./FT.
 R = 477.5

NET LENGTH OF CENTERLINE STA. 60+00 TO 87+24.6 = 2737.5 LIN. FT.



C = 52 C.Y.
 S.G.F. = 2345 C.Y.
 F = 975 C.Y.
 BALLAST = 844 C.Y. @ 30% SHG.
 BALLAST = 780 C.Y. @ 25% SHG.

C = 1119 C.Y.
 S.G.F. = 1344 C.Y.
 F = 861 C.Y. @ 30% SHG.
 BALLAST = 1075 C.Y. @ 25% SHG.

C = 860 C.Y.
 S.G.F. = 892 C.Y.
 F = 653 C.Y. @ 30% SHG.
 BALLAST = 794 C.Y. @ 25% SHG.

STA 62+00
30'x44' CULV. PIPE REQ'D.

STA 70+45
24'x40' CULV. PIPE REQ'D.

STA 73+40 B-32-10
1-25' TR. TIMBER I-BEAM SPAN REQ'D.
22' CLEAR RWY.
SEE DRWG X-