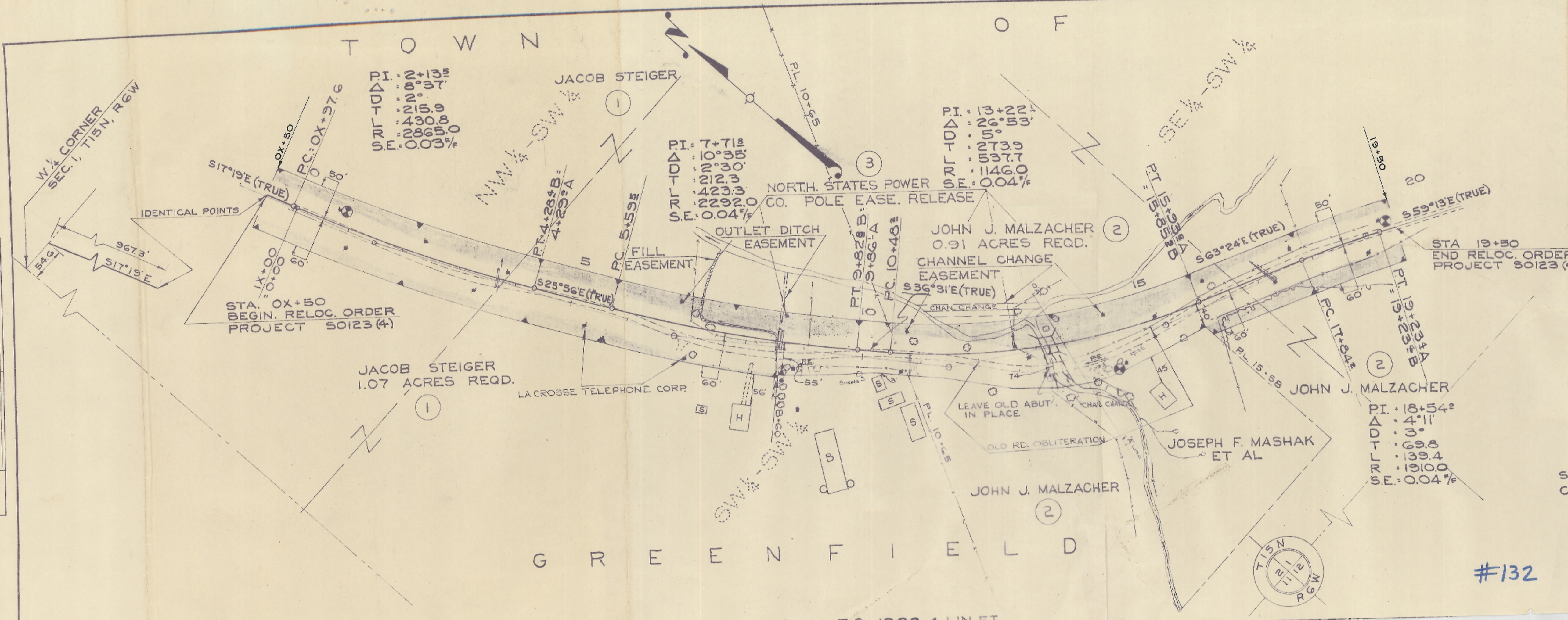
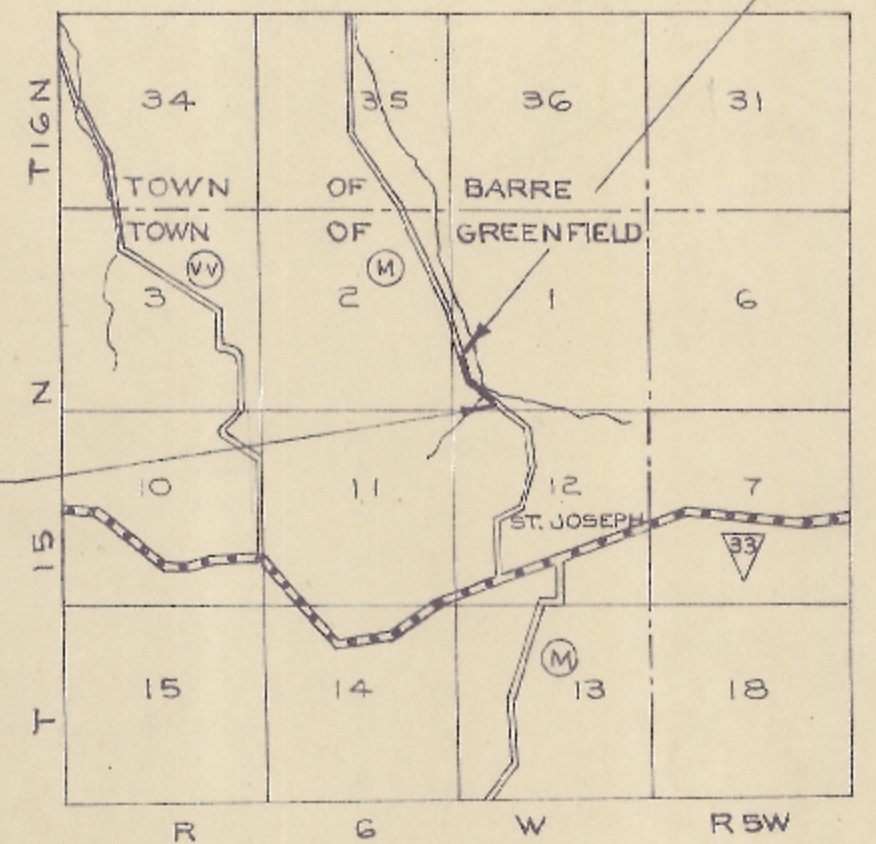


P.R.A. DISTRICT OFFICE	PROJECT	SHEET NUMBER	TOTAL SHEETS
WIS. 5 N	SO123(4)		

DATE	10-50
BY	W.L.S. K.L.L.
SURVEYED	
PLOTTED	
ALIGNMENT CHECKED	
RT. OF WAY CHECKED	
PLAN NO.	8120



STA. 0X+50
BEGIN. RELOC. ORDER
PROJECT SO123(4)



LOCATION SKETCH

SCALE
0 1/2
MILES

S.T.H. 33-BARRE MILLS ROAD (MASHAK BRIDGE)
C.T.H. "M" LA CROSSE COUNTY

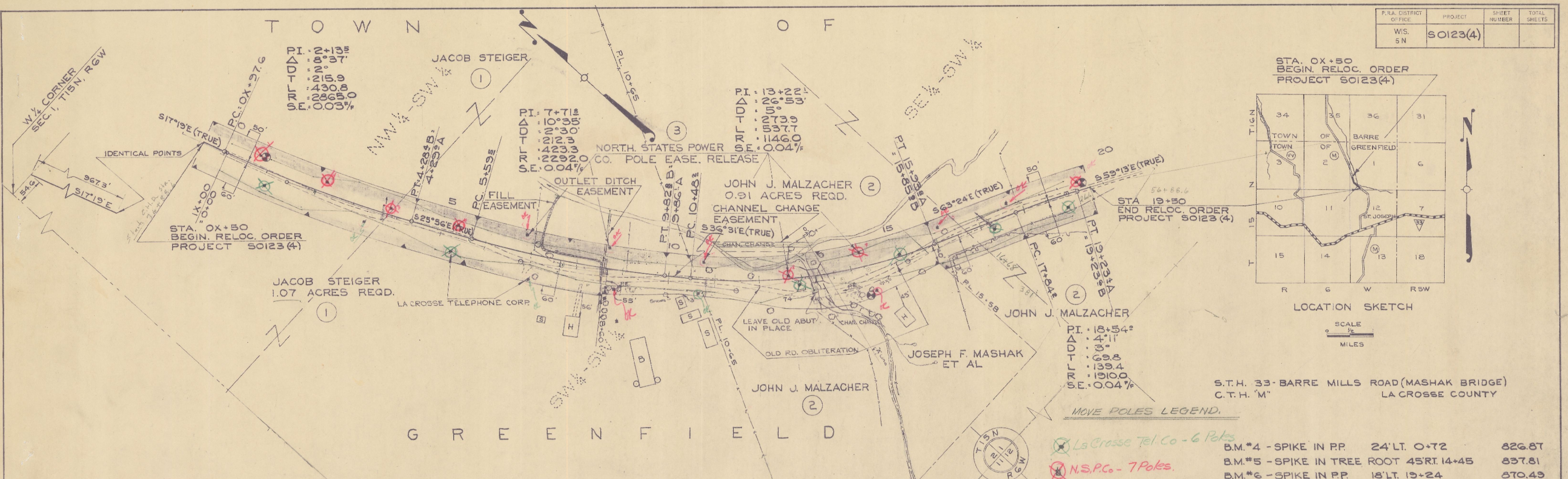
Date FEB 28 1951

B.M.*4 - SPIKE IN P.P.	24' LT. 0+72	826.87
B.M.*5 - SPIKE IN TREE ROOT	45' RT. 14+45	837.81
B.M.*6 - SPIKE IN P.P.	18' LT. 19+24	870.49

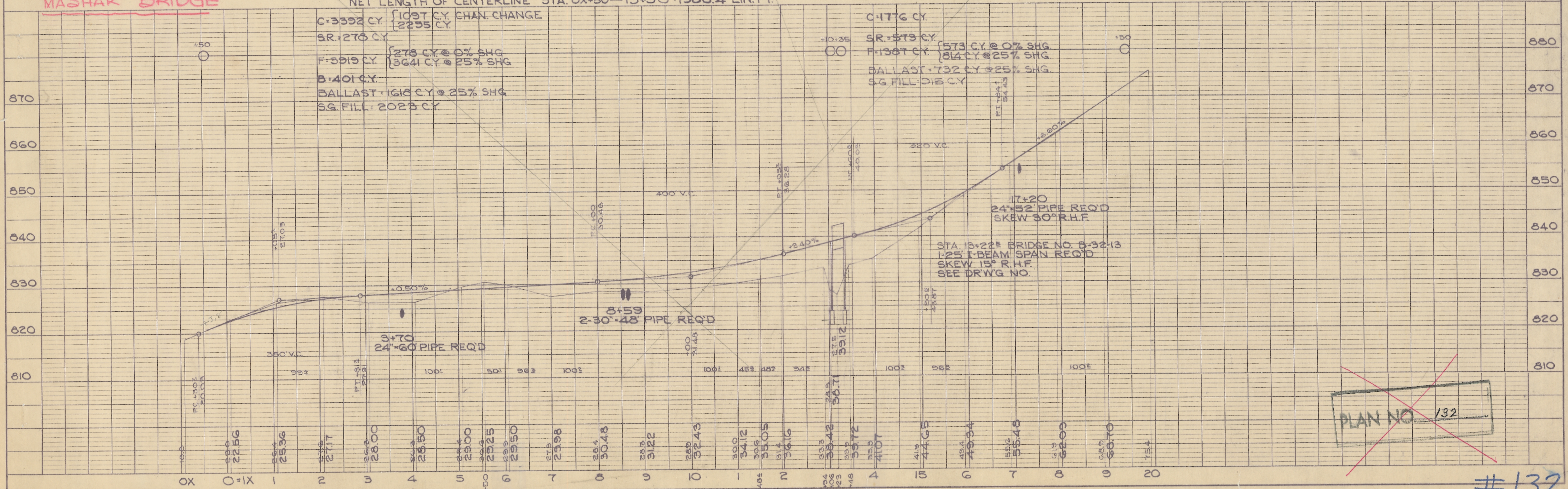
#132

NET LENGTH OF CENTERLINE STA. 0X+50-19+50 = 1988.4 LIN. FT.

F.R.A. DISTRICT OFFICE	PROJECT	SHEET NUMBER	TOTAL SHEETS
WIS. 5N	50123(4)		



NET LENGTH OF CENTERLINE STA. 0X+50-19+50: 1988.4 LIN. FT.



MOVE POLES LEGEND.

B.M.*4 - SPIKE IN P.P.	24' LT. 0+72	826.87
B.M.*5 - SPIKE IN TREE ROOT	45' RT. 14+45	837.81
B.M.*6 - SPIKE IN P.P.	18' LT. 19+24	870.49

~~PLAN NO. 132~~

#132